

23

Ημερήσιο Δελτίο  
Συναλλακτικής Δραστηριότητας

Daily Official List  
of Trading Activity

Monday, 29 May, 2023

Year: 144 Trading Day No: 99



**ATHEXGROUP**  
Athens Exchange Group

**Disclaimer:**

Hellenic Exchanges-Athens Stock Exchange S.A endeavours to ensure that the data and other material ("Information") presented on the Daily Official List are accurate and complete, but it is not liable for any errors or omissions of data or /and for the accuracy, credibility, updating and completeness of the aforesaid information nor it has any liability arising directly or indirectly from the use of the above Information.

The Company is not liable for the accuracy of the data included in listed companies' announcements. Only the sender of such an announcement is fully and solely liable for any infringement of third party's rights from the content of such announcement. All contents of the Daily Official List are provided only for information purposes and do not constitute investment advice or solicitation to invest in securities or other products listed for trading on the Exchange.

You acknowledge and agree that the Company is the owner of any property rights related to any Information appearing on the Daily Official List including intellectual property rights copyright, trademarks, etc.

The above data are a property of the Hellenic Exchanges-Athens Exchange and are copyright protected. Users are forbidden to reproduce, modify, copy, sale, transmit or redistribute, by all reproduction means and methods, part or the whole of the above data, without reference to their source.

The commercial exploitation of these data is, also, forbidden by third parties. Hellenic Exchanges-Athens Exchange does not carry any responsibility, direct or indirect, derived from usage or accidental alteration of the above data when used by third parties.

---

**Hellenic Exchanges – Athens Stock Exchange S.A.**

110 Athinon Ave., 10442 Athens, Tel: (210) 33.66.800, Fax: (210) 32.13.938

[www.athexgroup.gr](http://www.athexgroup.gr)

---

**Thessalonica Stock Exchange Center (T.S.E.C)**

16-18 Katouni Str., Thessalonica 546 25 Tel: (2310) 567.667, Fax: (2310) 530.545

**Athex Members Guarantee Fund**

14-16 Fidiou Str., Athens 106 78, Tel: (210) 33.04.682, Fax: (210) 33.04.155

**Hellenic Republic Capital Market Commission**

1 Kolokotroni Str. & 1 Stadiou Str., Athens 10562 Tel: (210) 33.77.100 Fax: (210) 33.77.173

---

**Table of Contents**

---

**Section 1: Statistical Figures of Securities, Derivatives and Lending**

Summary of Markets

Athex Indices

Analytic Figures for Athex Market's Boards and Categories

Trading Details by Athex Sectors and Financial Instruments (ETFs)

Top 10 best &amp; worst performing Shares

Derivatives Summary

**Section 2: Analytic Figures of Shares Transactions**

Analytic Figures of Shares Transactions

Shares' Notes

**Section 3: Figures of Securities Transactions**

Securities Blocks Details

Shares Rights Details

Stock Borrowing

Forced Sales Details

Forced Sales Registered Shares

Exchange Traded Funds (ETFs) Characteristics

**Section 5: Bonds traded in Fixed Income Assets Market**

Convertible Corporate Bonds - Regulated Market

Non Convertible Corporate Bonds - Regulated Market

Government Bonds

Treasury Bills &amp; Zero Coupon Government Bonds

Government Bonds Traded with the Open Outcry Method

State Banks Bonds

**Section 6: Additional Infos**

Athex &amp; ATHEXClear Members List

List of Stocks under Market Making operations

**Section 7: Derivatives Market Analytic Figures**

Index Futures

Stock Futures

Index Options

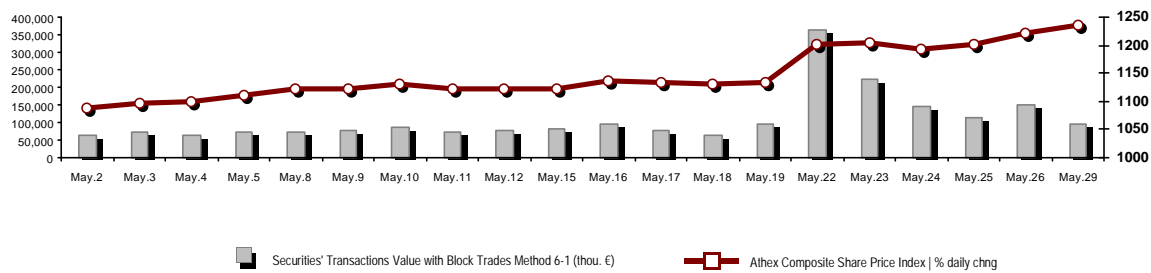
Stock Options

Stock Lending Analytic Figures

**Appendix A: Sectors codification for listed companies**

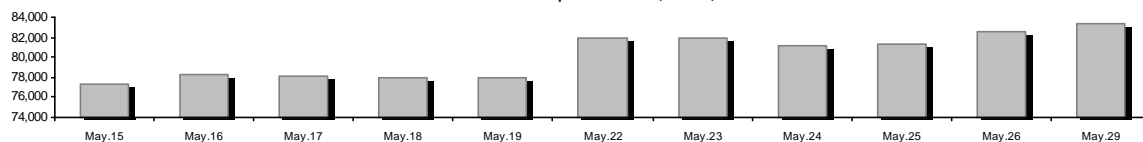
## Summary of Markets

Athex Composite Share Price Index vs Shares and Derivatives Transactions Value

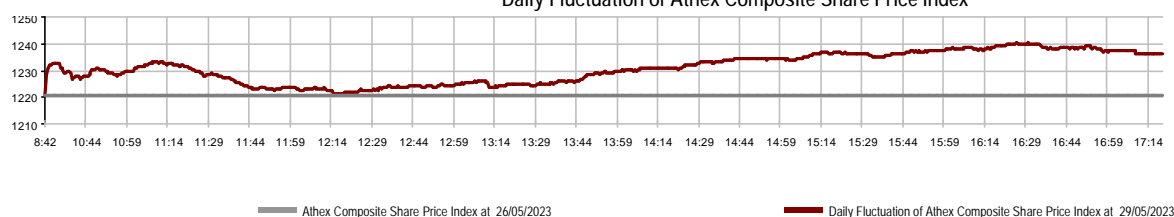


Athex Capitalisation (mill. €)**:	83,413.16		Derivatives Total Open Interest	471,626
Daily change: mill. €   %	847.30	1.03%	in Index Futures   % daily chng	7,965 1.79%
Yearly Avg Capitalisation: mill. €   % chng prev year Avg	73,710.96	16.89%	in Stock Futures   % daily chng	461,302 2.19%
Athex Composite Share Price Index   % daily chng	1,236.20	1.25%	in Index Options   % daily chng	1,517 1.47%
Athex Composite Share Price Index Capitalisation (mill. €)	76,148.33		in Stock Options   % daily chng	842 -3.22%
Daily change (mill. €)	799.68			
Securities' Transactions Value with Block Trades Method 6-1 (t)	97,023.41		Derivatives Contracts Volume:	46,770
Daily change: %	-53,888.07	-35.71%	Daily change: pieces   %	4,886 11.67%
YtD Avg Trans. Value: thou. €   % chng prev year Avg	105,163.86	45.55%	YtD Avg Derivatives Contracts % chng prev year Avg	46,353 34.94%
Blocks Transactions Value of Method 6-1 (thou. €)	5,410.88		Derivatives Trades Number:	2,775
Blocks Transactions Value of Method 6-2 & 6-3 (thou. €)	0.00		Daily change: number   %	81 3.01%
Bonds Transactions Value (thou.€)	773.13		YtD Avg Trades number % chng prev year Avg	2,413 17.46%
Securities' Transactions Volume with Block Trades Method 6-1 (tho)	23,513.74		Lending Total Open Interest	304,992
Daily change: thou. pieces   %	-19,595.22	-45.46%	Daily change: pieces   %	-100,834 -24.85%
YtD Avg Volume: % chng prev year Avg	40,314.13	42.20%	Lending Volume (Multilateral/Bilateral)	22,193
Blocks Transactions Volume of Method 6-1 (thou. Pieces)	1,227.32		Daily change: pieces   %	22,193
Blocks Transactions Volume of Method 6-2 & 6-3 (thou. Pieces)	0.00		Multilateral Lending	5,592
Bonds Transactions Volume	817,000		Bilateral Lending	16,601
Securities' Trades Number with Block Trades Method 6-1	37,223		Lending Trades Number:	11
Daily change: number   %	-10,659	-22.26%	Daily change: %	11
YtD Avg Trades number % chng prev year Avg	36,094	22.70%	Multilateral Lending Trades Number	9
Number of Blocks Method 6-1	14		Bilateral Lending Trades Number	2
Number of Blocks Method 6-2 & 6-3	0			
Number of Bonds Transactions	198			

Athex Capitalisation (mill. €)\*\*



Daily Fluctuation of Athex Composite Share Price Index



## Athex Indices

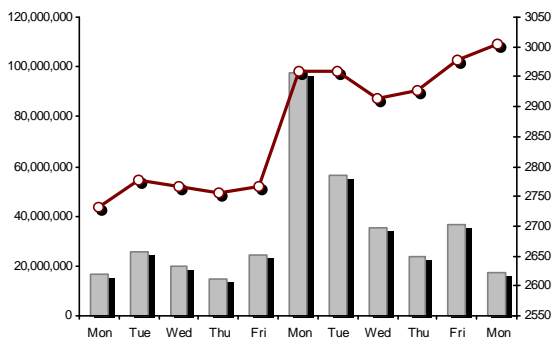
Index name	29/05/2023	26/05/2023	pts.	%	Min	Max	Year min	Year max	Year change
Athex Composite Share Price Index	1,236.20 #	1,220.89	15.31	1.25%	1,220.89	1,240.22	929.79	1,240.22	32.95% #
Athex ESG Index	1,408.06 #	1,394.68	13.38	0.96%	1,393.62	1,414.46	1,057.52	1,414.46	33.13% #
FTSE/Athex Large Cap	3,004.40 #	2,977.00	27.40	0.92%	2,972.43	3,018.91	2,250.77	3,018.91	33.44% #
FTSE/Athex Mid Cap Index	1,834.12 #	1,791.89	42.23	2.36%	1,791.89	1,835.07	1,411.43	1,835.07	29.95% #
FTSE/ATHEX High Dividend Yield Index	3,741.14 #	3,662.94	78.20	2.13%	3,662.94	3,751.69	3,028.28	3,751.69	23.54% #
FTSE/ATHEX Global Traders Index Plus	3,439.13 #	3,363.28	75.85	2.26%	3,363.28	3,450.47	2,616.09	3,450.47	31.46% #
FTSE/ATHEX Mid & Small Cap Factor-Weighted Ind	5,045.60 #	4,985.87	59.73	1.20%	4,985.87	5,055.99	4,353.12	5,055.99	14.79% #
ATHEX Select Index Plus	4,102.31 #	4,004.17	98.14	2.45%	4,004.17	4,103.97	3,071.06	4,103.97	33.58% #
ATHEX Select Index	5,878.85 #	5,752.45	126.40	2.20%	5,752.45	5,909.45	4,343.88	6,091.85	35.34% #
FTSE/Athex Market Index	714.82 #	708.37	6.45	0.91%	707.62	717.93	539.21	717.93	32.53% #
Athex Composite Index Total Return Index	2,199.98 #	2,172.74	27.24	1.25%	2,172.74	2,207.13	1,641.17	2,207.13	34.05% #
FTSE/Athex Large Cap Total Return	4,843.28 #	4,799.11	44.17	0.92%			3,623.42	4,843.28	34.50% #
FTSE/Athex Mid Cap Total Return	2,418.42 #	2,362.74	55.68	2.36%			1,881.61	2,418.42	30.19% #
Hellenic Mid & Small Cap Index	1,766.62 #	1,728.02	38.60	2.23%	1,728.02	1,767.23	1,365.14	1,767.23	29.41% #
FTSE/Athex Banks	996.12 €	1,001.72	-5.60	-0.56%	988.03	1,017.34	640.09	1,024.93	55.51% #
FTSE/Athex Insurance	2,858.63 #	2,828.05	30.58	1.08%	2,828.05	2,866.27	2,652.26	3,042.07	-2.60% €
FTSE/Athex Financial Services	1,326.82 #	1,275.46	51.36	4.03%	1,275.46	1,338.45	672.72	1,375.02	93.58% #
FTSE/Athex Industrial Goods & Services	6,715.14 #	6,636.80	78.34	1.18%	6,636.80	6,726.44	4,603.86	6,731.65	44.77% #
FTSE/Athex Retail	1,258.34 #	1,211.01	47.33	3.91%	1,211.01	1,258.34	901.21	1,258.34	39.63% #
FTSE/ATHEX Real Estate	4,329.87 #	4,238.88	90.99	2.15%	4,238.88	4,329.87	3,750.22	4,461.05	6.30% #
FTSE/Athex Consumer Goods & Services	12,702.82 #	12,546.58	156.24	1.25%	12,480.04	12,893.38	8,974.47	13,239.61	38.71% #
FTSE/Athex Food & Beverage	10,467.88 €	10,533.90	-66.02	-0.63%	10,423.13	10,596.85	8,101.49	11,188.59	23.64% #
FTSE/Athex Basic Resources	8,470.16 #	8,359.09	111.07	1.33%	8,327.19	8,499.36	6,463.31	8,499.36	30.52% #
FTSE/Athex Construction & Materials	4,198.43 #	4,116.66	81.77	1.99%	4,079.48	4,211.31	3,204.90	4,211.31	31.00% #
FTSE/Athex Energy	5,472.20 #	5,218.30	253.90	4.87%	5,218.30	5,510.40	4,780.16	5,856.79	8.79% #
FTSE/Athex Travel & Leisure	2,836.68 #	2,784.73	51.95	1.87%	2,784.73	2,861.88	2,196.17	2,875.50	27.94% #
FTSE/Athex Technology	2,547.73 #	2,496.78	50.95	2.04%	2,496.78	2,549.01	2,047.81	2,549.01	24.02% #
FTSE/Athex Telecommunications	3,998.26 #	3,916.93	81.33	2.08%	3,916.93	4,014.51	3,511.53	4,391.80	-1.80% €
FTSE/Athex Utilities	5,886.54 #	5,767.49	119.05	2.06%	5,767.49	5,890.27	4,598.77	5,890.27	28.00% #
FTSE/Athex Health Care	413.23 #	406.44	6.79	1.67%	406.44	415.49	390.59	469.84	-1.35% €
FTSE/Athex Personal Products	7,669.27 #	7,380.33	288.94	3.92%	7,301.68	7,745.84	6,441.87	7,905.24	16.09% #
Athex All Share Index	291.43 #	288.46	2.97	1.03%	291.43	291.43	231.11	291.43	26.58% #
MSCI GREECE REBASED	4,754.34 #	4,709.45	44.89	0.95%	4,709.36	4,782.41	4,125.04	4,807.36	--- -
Hellenic Corporate Bond Index	122.88 #	122.80	0.08	0.06%			118.78	122.88	3.27% #
Hellenic Corporate Bond Price Index	87.82 #	87.77	0.05	0.06%			85.96	87.82	1.85% #

Note 1: FTSE/Med 100, Hellenic Corporate Bond Price Index and Hellenic Corporate Bond Index closing prices refer to the previous trading day of 25/05/2023.

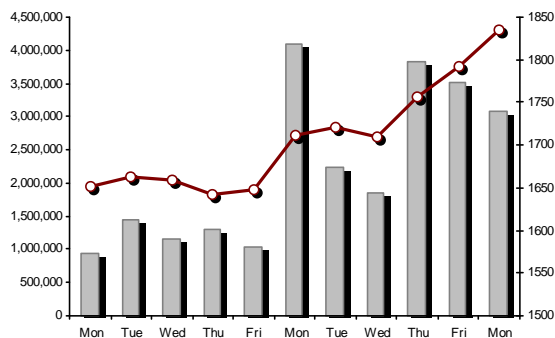
Note 2: The Hellenic Mid & Small Cap Index is a Customized index calculated by the Athens Exchange.

Athex Indices

FTSE/Large Cap

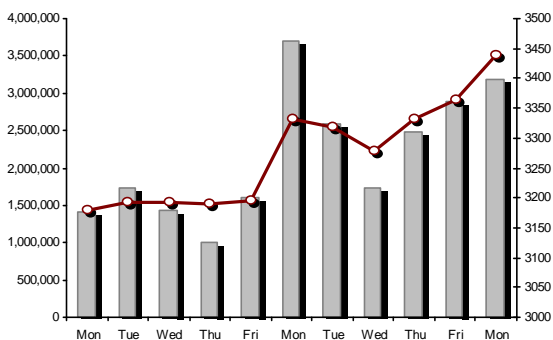


29/05/2023: 0.92% FTSE/Athex Mid Cap Index

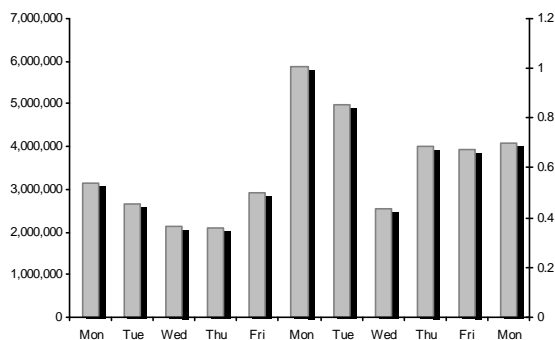


29/05/2023: 2.36%

FTSE/ATHEX Global Traders Index Plus

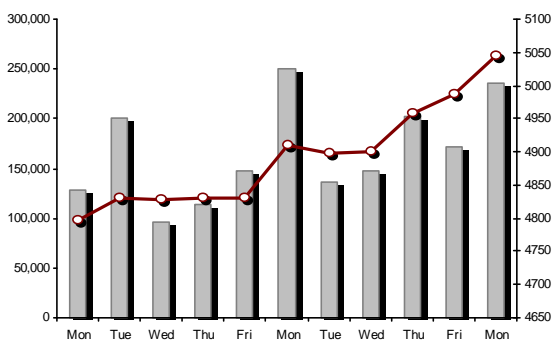


29/05/2023: 2.26% FTSE/ATHEX Global Traders Index

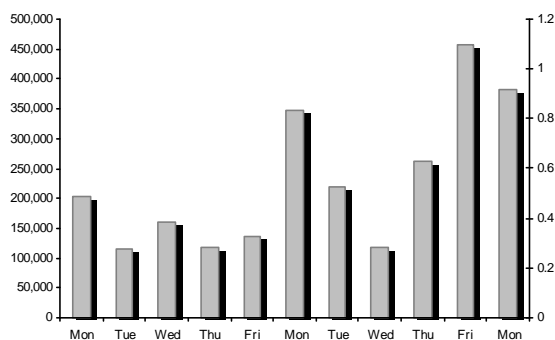


FTSE/ATHEX Mid & Small Cap Factor-Weighted Index

29/05/2023: 1.20%



ATHEX Mid & SmallCap Price Index



Indices volume of transactions

Indices closing prices

## Analytic Figures for Athex Market's Boards and Categories

	Total Traded Securities	Main Market	Surveillance	Exchange Traded Funds (ETFs)
Totals	124	111	12	1
Gain / Lose / Same:	90 / 21 / 13	83 / 18 / 10	6 / 3 / 3	1 / 0 / 0
Athex Capitalisation (mill. €) **	83,413.16	83,057.67	355.49	
Daily Average Trans/ons Value(thou.€)	105,163.86	104,913.86	254.88	40.48
Transactions Value	97,023.41	96,850.04	170.36	3.02
Main Board:	91,612.54	91,439.16	170.36	3.02
Blocks Board 6_2_3:	5,410.88	5,410.88	0.00	0.00
Forced Sales Board:	0.00	0.00	0.00	0.00
Special Terms Board:	0.00	0.00	0.00	0.00
Daily Average Transactions Volume	40,314,132	39,153,523	1,167,079	1,537
Transactions Volume	23,513,742	22,973,051	540,591	100
Main Board:	22,286,426	21,745,735	540,591	100
Blocks Board 6_2_3:	1,227,316	1,227,316	0	0
Forced Sales Board:	0	0	0	0
Special Terms Board:	0	0	0	0
Daily Average Number of Trades	36,094	35,844	247	3
Number of Trades	37,223	37,010	212	1
Main Board:	37,209	36,996	212	1
Blocks Board 6_2_3:	14	14	0	0
Forced Sales Board:	0	0	0	0
Special Terms Board:	0	0	0	0

## Trading Details by Athex Sectors and Financial Instruments (ETFs)

Code	Sectors	Gain / Lose / Same	Number of Trades	Transactions Volume	Transactions Value	% of Total Trans. Value
3010	- Banks	2 / 4 / 0	8,679	12,561,516	25,825,334.45	26.62%
5510	- Basic Resources	15 / 1 / 1	1,682	747,079	2,209,444.94	2.28%
5010	- Construction & Materials	12 / 1 / 1	3,131	1,589,619	4,888,754.46	5.04%
4020	- Consumer Products & Services	4 / 4 / 0	1,604	350,350	4,085,429.86	4.21%
6010	- Energy	2 / 1 / 1	3,121	560,936	8,594,299.14	8.86%
12000	- Financial Instruments	1 / 0 / 0	1	100	3,018.00	0.00%
3020	- Financial Services	3 / 1 / 1	1,025	318,239	1,667,901.28	1.72%
4510	- Food Beverage & Tobacco	4 / 2 / 0	321	89,063	1,034,511.51	1.07%
2010	- Health Care	3 / 0 / 0	423	988,422	479,669.02	0.49%
5020	- Industrial Goods & Services	9 / 3 / 4	3,049	919,658	7,555,439.88	7.79%
3030	- Insurance	1 / 0 / 0	5	410	1,531.50	0.00%
4030	- Media	0 / 1 / 1	17	16,835	9,226.90	0.01%
4520	- Personal Care, Drug & Grocery Stores	2 / 1 / 0	218	194,049	1,353,828.97	1.40%
3510	- Real Estate	6 / 1 / 2	1,486	481,418	2,258,310.36	2.33%
4040	- Retail	5 / 0 / 0	636	293,122	1,108,611.41	1.14%
1010	- Technology	11 / 0 / 0	1,965	971,716	2,886,872.37	2.98%
1510	- Telecommunications	2 / 0 / 0	2,775	641,712	9,142,034.47	9.42%
4050	- Travel & Leisure	3 / 1 / 2	3,043	1,144,367	11,537,113.89	11.89%
6510	- Utilities	5 / 0 / 0	4,042	1,645,131	12,382,081.47	12.76%

## Top 10 best &amp; worst performing Shares

## Main Market

With positive Price change	Closing price	change	With negative Price change	Closing price	change
AUSTRIACARD (CB)	13	7.44% #	KEKROPS SA (CR)	1.11	-1.77% ☒
AEGEAN AIRLINES (CR)	9.84	5.69% #	CENERGY HOLDINGS (CB)	5.51	-1.25% ☒
MOTOR OIL (CR)	24.04	5.25% #	REVOIL (CR)	1.385	-1.07% ☒
AVAX S.A. (CR)	1.046	5.02% #	EUROBANK HOLDINGS (CR)	1.5235	-1.04% ☒
HELLENIC EXCHANGES-A.S.E. (CR)	5.29	4.54% #	PAPOUTSANIS (CR)	2.31	-0.86% ☒
DIMAND (CR)	12.9	4.45% #	CC HBC AG (CR)	27.92	-0.64% ☒
AS COMPANY SA (CR)	2.4	4.35% #	PIRAEUS FINANCIAL HOLD (CR)	2.784	-0.57% ☒
GR. SARANTIS S.A. (CR)	7.72	4.32% #	ALPHA SERVICES HOLD (CR)	1.44	-0.35% ☒
QUALITY & RELIABILITY SA (CR)	0.73	4.29% #	NATIONAL BANK (CR)	6.11	-0.20% ☒
FOURLIS (CR)	4.46	4.21% #			
With the highest Transactions Value	Value (thou. €)	change	With the highest Transactions Volume	Volume	change
ALPHA SERVICES HOLD (CR)	9,300.48	-0.35% ☒	ALPHA SERVICES HOLD (CR)	6,402,510	-0.35% ☒
OTE (CR)	9,126.77	2.07% #	PIRAEUS FINANCIAL HOLD (CR)	2,795,133	-0.57% ☒
OPAP (CR)	8,913.02	1.43% #	EUROBANK HOLDINGS (CR)	2,605,793	-1.04% ☒
PIRAEUS FINANCIAL HOLD (CR)	7,831.13	-0.57% ☒	LAVIPHARM SA (CR)	972,948	1.96% #
PPC (CR)	6,601.46	2.15% #	NATIONAL BANK (CR)	751,741	-0.20% ☒
MOTOR OIL (CR)	6,472.29	5.25% #	ADMIE (IPTO) HOLDING S.A. (CR)	684,686	2.53% #
MYTILINEOS (CR)	5,204.50	1.31% #	PPC (CR)	664,535	2.15% #
NATIONAL BANK (CR)	4,590.16	-0.20% ☒	OTE (CR)	639,446	2.07% #
EUROBANK HOLDINGS (CR)	4,004.11	-1.04% ☒	OPAP (CR)	547,346	1.43% #
TERNA ENERGY (CR)	3,767.92	1.87% #	AVAX S.A. (CR)	482,587	5.02% #

Note: Stocks that are not included in the "Under Supervision" category, and the transactions value is more than 10,000 €.



## Derivatives Summary

	Number of Trades	Volume	Open Interest
<b>Index Futures</b>	<b>226</b>	<b>888</b>	<b>7,965</b>
FTSE/Athex Banks	6	37	1,724
FTSE/Athex Large Cap	220	851	6,057
MSCI GREECE REBASED	0	0	184
<b>Stock Futures</b>	<b>2,535</b>	<b>45,622</b>	<b>461,302</b>
ADMIE (IPTO) HOLDING S.A. (CR)	48	571	14,124
AEGEAN AIRLINES (CR)	137	454	1,514
ALPHA SERVICES HOLD (CR)	366	13,833	199,951
AUTOHELLAS SA (CR)	5	12	100
AVAX S.A. (CR)	12	37	507
CC HBC AG (CR)	0	0	241
CENERGY HOLDINGS (CB)	75	430	6,117
ELLAKTOR (CR)	16	44	1,094
ELVALHALCOR (CR)	7	12	1,514
EUROBANK HOLDINGS (CR)	236	13,752	47,991
EYDAP S.A. (CR)	12	39	552
FOURLIS (CR)	30	130	1,042
GEK TERNA (CR)	19	90	8,214
HELLENIC EXCHANGES-A.S.E. (CR)	36	128	2,228
HELLENIQ ENERGY (CR)	58	171	1,434
INTRACOM HOLDINGS (CR)	43	193	4,546
INTRAKAT (CR)	50	301	11,108
JUMBO SA (CR)	24	70	383
LAMDA DEVELOPMENT SA (CR)	37	122	5,850
MIG (CR)	28	109	1,393
MOTOR OIL (CR)	89	503	2,079
MYTILINEOS (CR)	65	231	2,493
NATIONAL BANK (CR)	195	2,546	22,670
OPAP (CR)	31	297	1,799
OTE (CR)	205	1,274	11,248
P.P.A. S.A. (CR)	1	1	356
PIRAEUS FINANCIAL HOLD (CR)	314	8,023	69,512
PPC (CR)	166	1,051	22,766
QUEST HOLDINGS (CR)	6	10	222
TERNA ENERGY (CR)	74	398	12,022
TITAN CEMENT (CB)	3	7	507
VIOHALCO SA/NV (CB)	147	783	5,725
<b>Index Options</b>	<b>10</b>	<b>156</b>	<b>1,517</b>
FTSE/Athex Large Cap	10	156	1,517
<b>Stock Options</b>	<b>4</b>	<b>104</b>	<b>842</b>
ALPHA SERVICES HOLD (CR)	0	0	20
NATIONAL BANK (CR)	0	0	287
OPAP (CR)	0	0	50
OTE (CR)	0	0	30
PIRAEUS FINANCIAL HOLD (CR)	0	0	5
PPC (CR)	4	104	450
<b>Total Derivatives Traded</b>	<b>2,775</b>	<b>46,770</b>	<b>471,626</b>









Number of Outstanding Securities	Nominal Value	Dividends [1]			Date of Last Coupon		Note	Shares	Closing price	% change	Previous closing price/date	Open price	Price min	Price max	Last price	Avg price	Last Bid [7]	Last Ask [7]	P/E after tax	Year	Volume	Trades	Transactions Value[8]	Company Mkt Value (thou. €)	Year low	Year high	Sector[4]
		2020	2021	2022	Dividend [2]	Right																					
7,125,216	0.650	---	---	---	01/07/2005	14/12/1999	4955	KRE.KA SA (CR)	0.28	---	0.28	06/04/2023	---	---	---	---	---	---	---	---	---	---	---	1,995.06	0.17	0.43	45102010
7,734,375	1.00	---	---	---	09/07/2007	07/01/2011	5277	LIVANIS SA (CR)	0.125	---	0.125	28/04/2023	---	---	---	---	---	---	---	---	---	---	---	966.80	0.12	0.18	40301030

## Shares' Notes

Code	Note text
( )	- Adjusted dividends.
*	- Last adjusted closing price.
[1]	- Net dividends.
[2]	- The "Date of Last Coupon" for New listings refers to the date company's stocks started to trade in Athex
[3]	- The Company Market Value is referred to the number of outstanding shares
[4]	- Sectors codification can be found in Appendix A
[5]	- The Market Value refers to the total number of shares listed (including their several classes) in the exchange by the company.
[6]	- P/E greater than 100
[7]	- Last view of the Order Book before the end of the trading session
[8]	- All Blocks Methods' Transactions Value are included.
4750	- Transfer to the Under Surveillance Category from 8/4/2011.
4955	- Transfer to the Surveillance Category as from 5/4/2013.
4957	- Transfer to the Surveillance Category as from 5/4/2013.
4958	- Transfer to the Surveillance Category as from 5/4/2013.
4959	- Transfer to the Surveillance Category as from 5/4/2013.
5093	- Transfer to the Surveillance Category as of 8/4/2015.
5141	- Transfer to the Surveillance Category as of 10/05/2017.
5160	- Transfer to the Surveillance Category as of 15/04/2016.
5165	- Transfer to the Surveillance Category as of 15/02/2018.
5179	- Suspension of trading as of 25/05/2018.
5193	- Transfer to the Surveillance Category as of 25/10/2018.
5197	- Transfer to the Surveillance Category as of 07/11/2018.
5216	- Suspension of trading as of 01/10/2019.
5232	- Transfer to the Under Surveillance Category from 08/04/2011.
5233	- Suspension of trading as of 13/05/2020.
5248	- Transfer to the Surveillance Category as of 06/09/20116.
5253	- Transfer to the Surveillance Category as of 14/5/2021.
5275	- Transfer to the Surveillance Category as of 09/07/2020.
5277	- Suspension of trading as of 02/05/2023.
5278	- Suspension of trading as of 03/05/2023.

## Securities Blocks Details

Securities	Block Volume	Price	Block Trade Value	Time of approval	Note
OPAP (CR)	124,684	16.21	2,021,127.64	10:38:01	20
ALPHA SERVICES HOLD (CR)	250,000	1.47	366,625.00	10:42:20	20
KRI-KRI S.A. (CR)	21,320	8.20	174,824.00	11:08:29	20
NATIONAL BANK (CR)	81,430	6.09	496,071.56	11:35:20	20
BIOKARPET S.A.(CR)	35,000	2.00	70,000.00	11:35:54	20
BIOKARPET S.A.(CR)	55,000	2.00	110,000.00	11:38:18	20
JUMBO SA (CR)	22,742	21.90	498,049.80	12:35:50	20
MPLK KEDROS (CR)	39,000	2.31	90,090.00	13:27:40	20
KRI-KRI S.A. (CR)	20,000	8.20	164,000.00	13:42:17	20
PIRAEUS FINANCIAL HOLD (CR)	100,000	2.83	283,000.00	15:17:21	20
ELVALHALCOR (CR)	150,000	1.86	279,000.00	15:42:14	20
ELVALHALCOR (CR)	50,000	1.86	93,000.00	15:44:23	20
ALPHA SERVICES HOLD (CR)	250,000	1.45	363,250.00	16:13:01	20
OTE (CR)	28,140	14.28	401,839.20	16:34:22	20

## Blocks Notes

9 - Method 6-1 / Special Fees

10 - Method 6-1 / Special Fees, SDS

14 - Method 6-3 / Settlement, Incomplete Buy and Sell

18 - Method 6-2 / SPOT 1

19 - Method 6-2 / SPOT 2

20 - Method 6-1 and Method 6-1 Same Day Settlement

21 - Other Pre-agreed



**Shares Rights Details**

Occured date	Exercise from	Exercise until	Trading until	Rights	Price min	Price max	Closing price	Last Bid	Last Ask	Volume	Trades	Transactions Value
--------------	---------------	----------------	---------------	--------	-----------	-----------	---------------	----------	----------	--------	--------	--------------------

No Rights Transactions.

---

**Forced Sales Details**

---

Securities	Category of Security	Transactions Volume	Number of Trades	Transactions Value	Note
------------	----------------------	------------------------	---------------------	-----------------------	------

---

No Forced Transactions.

---

---

**Forced Sales Notes**

---

- 1 - Compulsory Public Forced Sales
- 2 - Forced Sales of Fixed Registered Shares
- 3 - Forced Sales of Remaining Fractional Shares

**Forced Sales Registered Shares**

Securities	Start Date	End Date	Initial Volume	Remaining Volume	Date	Avg price (day)	Avg price (period)	Number of Trades	Transactions Volume	Transactions Value
------------	------------	----------	----------------	------------------	------	-----------------	--------------------	------------------	---------------------	--------------------

No Fixed Registered Shares Forced Sales.

**Forced Sales Notes**

According to Decision 1/380/04.05.2008 of the Hellenic Republic Capital Market Commission, the certificated registered shares that have not been deposited to the issuer for dematerialisation, will be auctioned in the Athens Exchange by the supervising issuer. Forced sales procedure is held according to Article 99A of the Athens Exchange Rulebook. The average price of the period is calculated by dividing the Total transactions value by the Total volume and includes all the transactions made until the current date.

## Exchange Traded Funds (ETFs) Characteristics

	Transactions Date (T)	Creation / Redemption	Units (T-1)	New Units (T-1)	Redemption Units (T-1)	Units (T) [1]	Fund Assets [2]	Net Unit Price	Dividend per Unit	Dividend Date
ALPHA ETF FTSE Athex Large Cap	29/05/2023	5,000	906,928	---	---	906,928	27,258,170.00	30.0555	0.52	01/07/2022

## ETFs Notes

[1] - Units (T) = Units (T-1) + New Units (T-1) - Redemption Units (T-1)

[2] - The Creation / Redemption Units of T-1 are included.

Convertible Corporate Bonds - Regulated Market

Num Listed Bonds	Nominal price	Issue price	Today's Rate	Exp. Date	Duration (years)	Note	Coupon		Trading Unit	Corporate Bonds	Price min	Price max	Closing price	Previous closing price/date	Volume	Transactions Value	Last order			ear min	Year max		
							Common	Preffered									Price	Buy / Sell	Date				
										#Error				#Type!									

Corporate Bonds Notes

Transactions Volume = (Pieces) \* (Nominal Price). Transactions Value = (Pieces) \* (Nominal Price) \* (price %) + (Accrued interest).

The price of a Bond is stated as a percentage (%) of Bond's Nominal Price.

Nominal Price in Euros (€), except if it is noted differently.

## Non Convertible Corporate Bonds - Regulated Market

Num Listed Bonds	Nominal price	Issue price	Today's Rate	Exp. Date	Duration (years)	Note	Coupon		Trading Unit	Corporate Bonds	Accrued Int.	Yield.T.Mat	Price min	Price max	Closing price	Previous closing price/date	Volume	Transactions Value	Last order		Date	ear min	Year max	
							Common	Preferred											Price	Buy / Sell				
100,000	1,000.00	1,000.00	2.95	11/02/2027	5	---	3	---	1	SAFE BULKERS PARTICIPATIONS PLC (Non Convertible)	8.7681	4.4390	94.3000	95.0000	94.6462	94.0000	26/05/2023	13,000	12,417.99	94.3000	B	29/05/2023	89.9269	97.0000
320,000	1,000.00	1,000.00	3.40	21/07/2027	7	---	6	---	1	LAMDA DEVELOPMENT S.A. (Non Convertible)	12.0889	4.7860	92.5500	93.5000	93.4999	93.4000	26/05/2023	182,000	171,059.28	92.5700	B	29/05/2023	91.4001	95.5000
200,000	1,000.00	1,000.00	2.10	27/10/2027	7	---	6	---	1	O.P.A.P. S.A. (Non Convertible)	1.9833	3.8270	92.5000	92.9600	92.5912	92.5640	26/05/2023	51,000	47,322.65	92.2500	B	29/05/2023	91.9800	95.4000
200,000	1,000.00	1,000.00	1.90	23/03/2028	7	---	5	---	1	MOTOR OIL CORINTH REFINERIES SA (Non Convertible)	3.6417	3.9350	90.4000	90.9800	90.9792	90.8250	26/05/2023	28,000	25,517.24	90.3000	B	29/05/2023	87.5500	91.0000
100,000	1,000.00	1,000.00	2.70	25/05/2026	5	---	5	---	1	COSTAMARE PARTICIPATIONS PLC (Non Convertible)	0.4500	4.0430	95.5000	96.0000	95.7692	95.5010	26/05/2023	50,000	47,807.80	95.5000	B	29/05/2023	92.1400	97.0000
300,000	1,000.00	1,000.00	2.30	20/07/2028	7	---	4	---	1	PRODEA REIC S.A.(Non Convertible)	8.3694	5.8620	84.4001	84.9999	84.7500	84.7500	26/05/2023	42,000	35,947.51	84.4001	B	29/05/2023	82.0100	85.8000
150,000	1,000.00	1,000.00	2.65	22/10/2026	5	---	4	---	1	CPLP SHIPPING HOLDINGS PLC (Non Convertible)	2.7236	4.5130	93.7501	94.0000	93.8600	94.2500	26/05/2023	5,000	4,706.62	93.7000	B	29/05/2023	92.5500	96.0000
250,000	1,000.00	1,000.00	2.45	16/11/2028	7	---	4	---	1	ELVALHALCOR S.A. (Non Convertible)	1.0208	5.0380	87.9000	88.5000	87.9451	88.3940	26/05/2023	43,000	37,876.92	87.9000	B	29/05/2023	85.6375	91.0000
500,000	1,000.00	1,000.00	2.75	03/07/2027	7	---	6	---	1	GEK TERNA S.A. (Non Convertible)	11.3056	4.7880	90.9810	92.3000	91.5928	92.0000	26/05/2023	72,000	66,760.84	91.2000	B	29/05/2023	86.8000	92.3000
300,000	1,000.00	1,000.00	2.30	14/12/2028	7	---	3	---	1	GEK TERNA S.A. (Non Convertible)	10.7333	4.9490	87.6000	87.6000	87.6000	87.3230	26/05/2023	1,000	886.73	87.0000	B	29/05/2023	82.1339	87.9999
175,000	1,000.00	1,000.00	3.40	26/07/2024	5	---	8	---	1	ATTICA HOLDINGS S.A. (Non Convertible)	11.8056	4.5790	97.7302	98.6000	98.0040	98.7000	26/05/2023	60,000	59,510.74	98.0000	B	29/05/2023	96.6179	98.9000
230,000	1,000.00	1,000.00	4.70	12/07/2029	7	---	2	---	1	LAMDA DEVELOPMENT S.A. (Non convertible)	18.1472	4.5710	98.9000	99.8989	99.6994	99.7400	26/05/2023	120,000	121,228.57	98.9031	B	29/05/2023	94.9889	101.0000
100,000	1,000.00	1,000.00	4.40	26/07/2029	7	---	2	---	1	CPLP SHIPPING HOLDINGS PLC (Non Convertible)	15.2778	4.4080	99.1500	99.1500	99.1500	100.0000	26/05/2023	5,000	5,033.89	99.0301	B	29/05/2023	97.2369	100.8000
200,000	1,000.00	1,000.00	3.60	12/03/2026	7	---	9	---	1	AEGEAN AIRLINES S.A. (Non Convertible)	7.9000	3.5650	98.6795	98.6796	98.6796	97.3000	26/05/2023	20,000	19,893.91	98.0000	B	29/05/2023	95.6301	98.9000
150,000	1,000.00	1,000.00	2.60	22/10/2026	7	---	8	---	1	TERNA ENERGY FINANCE S.A. (Non Convertible)	2.6722	3.8750	94.0002	94.9999	94.9999	95.6500	26/05/2023	17,000	16,058.35	94.0200	B	29/05/2023	92.5000	95.7400
100,000	1,000.00	1,000.00	2.80	25/01/2027	5	---	3	---	1	PREMIA S.A. (Non Convertible)	9.8000	5.5060	91.0100	91.0100	91.0100	91.4940	26/05/2023	3,000	2,759.70	90.5010	B	29/05/2023	87.6862	92.5100
120,000	1,000.00	1,000.00	3.95	04/04/2025	7	---	11	---	1	GEK TERNA S.A. (Non Convertible)	6.2542	3.8330	98.7500	99.1000	98.8202	99.1000	26/05/2023	47,000	46,739.45	99.0200	B	29/05/2023	97.5523	100.0000
20,148	1,000.00	1,000.00	4.95	26/06/2023	5	---	10	---	1	B&F COMM. & GARM. INDUS. S.A. (Non Convertible)	21.3125	3.9690	---	---	---	100.0000	24/05/2023	---	---	98.5705	B	29/05/2023	99.0571	100.6899

## Corporate Bonds Notes

Transactions Volume = (Pieces) \* (Nominal Price). Transactions Value = (Pieces) \* (Nominal Price) \* (price %) + (Accrued interest).

The price of a Bond is stated as a percentage (%) of Bond's Nominal Price.

Nominal Price in Euros (€), except if it is noted differently.

## Non Convertible Corporate Bonds - Regulated Market

Num Listed Bonds	Nominal price	Issue price	Today's Rate	Exp. Date	Duration (years)	Note	Coupon		Trading Unit	Corporate Bonds	Accrued Int.	Yield.T.Mat	Price min	Price max	Closing price	Previous closing price/date	Volume	Transactions Value	Last order			ear min	Year max
							Common	Preferred											Price	Buy / Sell	Date		
120,000	1,000.00	1,000.00	2.65	06/12/2028	7	---	3	---	1	NOVAL PROPERTY REIC (Non Convertible)	12.9556	5.2090	87.2100	88.0000	87.9990	87.9750 26/05/2023	58,000	51,604.87	87.2210	B	29/05/2023	84.3700	90.8700

## Corporate Bonds Notes

Transactions Volume = (Pieces) \* (Nominal Price). Transactions Value = (Pieces) \* (Nominal Price) \* (price %) + (Accrued interest).

The price of a Bond is stated as a percentage (%) of Bond's Nominal Price.

Nominal Price in Euros (€), except if it is noted differently.

## Government Bonds

Number Listed Bonds	Nominal price	Today's Rate	Accrued Interest Calc	Exp. Date [1]	Duration (years)	Note	Coupons Date	Curr. coupon value	Trading Unit	Government Bonds	Price min	Price max	Closing price	Previous closing price/date	Volume	Transactions Value	Price	Last order Buy / Sell	Date
4,500,000	1,000.00	1.88	Actual/Actual	04/02/2035	15	---	04/02	1.88	1	GGB-FXD-040235-15Y-1.875-1.000	---	---	---	---	---	---	---	---	---
2,500,000	1,000.00	3.45	Actual/Actual	02/04/2024	5	---	02/04	3.45	1	GGB-FXD-020424-05Y-3.450-1.000	---	---	---	---	---	---	---	---	---
6,000,000	1,000.00	0.75	Actual/Actual	18/06/2031	10	---	18/06	0.75	1	GGB-FXD-180631-10Y-0.750-1.000	---	---	---	---	---	---	---	---	---
2,500,000	1,000.00	3.88	Actual/Actual	15/06/2028	5	---	15/06	3.88	1	GGB-FXD-150628-05Y-3.875-1.000	---	---	---	---	---	---	---	---	---
5,962,747,327	1.00	3.75	Actual/Actual	30/01/2028	10	---	/02 - 01/02 - 31/	3.75	1	GGB-FXD-300128-10Y-3.750-1.00	---	---	---	85.4610 13/07/2018	---	---	1.0000	B	28/11/2018
7,067,309,386	1.00	3.90	Actual/Actual	30/01/2033	15	---	/02 - 01/02 - 31/	3.90	1	GGB-FXD-300133-15Y-3.900-1.00	---	---	---	78.6730 13/07/2018	---	---	1.0000	B	28/11/2018
5,622,848,349	1.00	4.00	Actual/Actual	30/01/2037	19	---	/02 - 01/02 - 31/	4.00	1	GGB-FXD-300137-19Y-4.000-1.00	---	---	---	77.0370 13/07/2018	---	---	1.0000	B	28/11/2018
5,276,770,669	1.00	4.20	Actual/Actual	30/01/2042	24	---	/02 - 01/02 - 31/	4.20	1	GGB-FXD-300142-24Y-4.200-1.00	---	---	---	77.7640 13/07/2018	---	---	1.0000	B	28/11/2018
48,794,718	1.00	4.30	Actual/Actual	24/02/2024	12	---	24/02	4.30	1	GGB-FXD-240224-12Y-2.000-1.00	---	---	---	10.0000 22/06/2015	---	---	---	---	---
40,248,141	1.00	4.30	Actual/Actual	24/02/2025	13	---	24/02	4.30	1	GGB-FXD-240225-13Y-2.000-1.00	---	---	---	10.0000 22/06/2015	---	---	---	---	---
59,586,043	1.00	4.30	Actual/Actual	24/02/2026	14	---	24/02	4.30	1	GGB-FXD-240226-14Y-2.000-1.00	---	---	---	10.0000 22/06/2015	---	---	---	---	---
41,118,344	1.00	4.30	Actual/Actual	24/02/2027	15	---	24/02	4.30	1	GGB-FXD-240227-15Y-2.000-1.00	---	---	---	10.0000 22/06/2015	---	---	---	---	---
45,137,734	1.00	4.30	Actual/Actual	24/02/2028	16	---	24/02	4.30	1	GGB-FXD-240228-16Y-2.000-1.00	---	---	---	10.0000 22/06/2015	---	---	---	---	---
61,768,888	1.00	4.30	Actual/Actual	24/02/2029	17	---	24/02	4.30	1	GGB-FXD-240229-17Y-2.000-1.00	---	---	---	10.0000 22/06/2015	---	---	---	---	---
54,567,744	1.00	4.30	Actual/Actual	24/02/2030	18	---	24/02	4.30	1	GGB-FXD-240230-18Y-2.000-1.00	---	---	---	10.0000 22/06/2015	---	---	---	---	---
37,541,515	1.00	4.30	Actual/Actual	24/02/2031	19	---	24/02	4.30	1	GGB-FXD-240231-19Y-2.000-1.00	---	---	---	10.0000 22/06/2015	---	---	---	---	---
37,558,317	1.00	4.30	Actual/Actual	24/02/2032	20	---	24/02	4.30	1	GGB-FXD-240232-20Y-2.000-1.00	---	---	---	10.0000 22/06/2015	---	---	---	---	---
37,473,732	1.00	4.30	Actual/Actual	24/02/2033	21	---	24/02	4.30	1	GGB-FXD-240233-21Y-2.000-1.00	---	---	---	10.0000 22/06/2015	---	---	---	---	---
33,888,293	1.00	4.30	Actual/Actual	24/02/2034	22	---	24/02	4.30	1	GGB-FXD-240234-22Y-2.000-1.00	---	---	---	10.0000 22/06/2015	---	---	---	---	---
35,177,800	1.00	4.30	Actual/Actual	24/02/2035	23	---	24/02	4.30	1	GGB-FXD-240235-23Y-2.000-1.00	---	---	---	10.0000 22/06/2015	---	---	---	---	---
35,547,268	1.00	4.30	Actual/Actual	24/02/2036	24	---	24/02	4.30	1	GGB-FXD-240236-24Y-2.000-1.00	---	---	---	10.0000 22/06/2015	---	---	---	---	---
40,246,306	1.00	4.30	Actual/Actual	24/02/2037	25	---	24/02	4.30	1	GGB-FXD-240237-25Y-2.000-1.00	---	---	---	10.0000 22/06/2015	---	---	---	---	---
37,643,952	1.00	4.30	Actual/Actual	24/02/2038	26	---	24/02	4.30	1	GGB-FXD-240238-26Y-2.000-1.00	---	---	---	10.0000 22/06/2015	---	---	---	---	---
36,977,100	1.00	4.30	Actual/Actual	24/02/2039	27	---	24/02	4.30	1	GGB-FXD-240239-27Y-2.000-1.00	---	---	---	10.0000 22/06/2015	---	---	---	---	---
41,615,000	1.00	4.30	Actual/Actual	24/02/2040	28	---	24/02	4.30	1	GGB-FXD-240240-28Y-2.000-1.00	---	---	---	10.0000 22/06/2015	---	---	---	---	---
42,227,208	1.00	4.30	Actual/Actual	24/02/2041	29	---	24/02	4.30	1	GGB-FXD-240241-29Y-2.000-1.00	---	---	---	10.0000 22/06/2015	---	---	---	---	---
68,288,487	1.00	4.30	Actual/Actual	24/02/2042	30	---	24/02	4.30	1	GGB-FXD-240242-30Y-2.000-1.00	---	---	---	10.0000 22/06/2015	---	---	---	---	---
4,000,000	1,000.00	3.88	Actual/Actual	12/03/2029	10	---	12/03	3.88	1	GGB-FXD-120329-10Y-3.875-1.000	---	---	---	---	---	---	100.0000	B	15/10/2019
4,500,000	1,000.00	0.00	Actual/Actual	12/02/2026	5	---	12/02	0.00	1	GGB-FXD-120226-05Y-0.000-1.000	---	---	---	---	---	---	---	---	---
3,000,000	1,000.00	3.38	Actual/Actual	15/02/2025	7	---	15/02	3.38	1	GGB-FXD-150225-07Y-3.375-1.000	---	---	---	---	---	---	---	---	---
964,000	1,000.00	3.25	Actual/Actual	20/03/2025	6	---	20/03	3.25	1	GGB-FXD-200325-06Y-3.250-1.000	---	---	---	---	---	---	---	---	---
2,100,000	1,000.00	3.55	Actual/Actual	20/03/2026	7	---	20/03	3.55	1	GGB-FXD-200326-07Y-3.550-1.000	---	---	---	---	---	---	---	---	---
40,000	1,000.00	2.18	FLR Actual/360	16/09/2023	1	---	16/03 - 16/09	---	1	GGB-FLT-160923-01Y-2.178-1.000	---	---	---	---	---	---	---	---	---
5,500,000	1,000.00	1.50	Actual/Actual	18/06/2030	10	---	18/06	1.50	1	GGB-FXD-180630-10Y-1.500-1.000	---	---	---	---	---	---	---	---	---

## Government Bonds Notes

Transactions Volume = (Pieces) \* (Nominal Price). Transactions Value = (Pieces) \* (Nominal Price) \* (price %) + (Accrued interest).

The Value of current coupon for the issues with NV 0.01 euro refers to NV 100 euros

FLR: Floating Interest Rate.

[1] - The Expiration Date of the interest bearing period and the Date for coupon payment.



## Government Bonds

Number Listed Bonds	Nominal price	Today's Rate	Accrued Interest Calc	Exp. Date [1]	Duration (years)	Note	Coupons Date	Curr. coupon value	Trading Unit	Government Bonds	Price min	Price max	Closing price	Previous closing price/date	Volume	Transactions Value	Price	Last order Buy / Sell	Date
5,364,250	1,000.00	3.25	Actual/Actual	20/03/2050	30	---	20/03	3.25	1	GGB-FXD-200350-30Y-3.250-1.000	---	---	---	---	---	---	---	---	---
3,924,361	1,000.00	2.00	Actual/Actual	22/04/2027	7	---	22/04	2.00	1	GGB-FXD-220427-07Y-2.000-1.000	---	---	---	---	---	---	99.9000	B	22/04/2020
2,500,000	1,000.00	1.88	Actual/Actual	23/07/2026	7	---	23/07	1.88	1	GGB-FXD-230726-07Y-1.875-1.000	---	---	---	---	---	---	---	---	---
4,050,000	1,000.00	4.25	Actual/Actual	15/06/2033	10	---	15/06	4.25	1	GGB-FXD-150633-10Y-4.250-1.000	---	---	---	---	---	---	---	---	---
3,500,000	1,000.00	1.88	Actual/Actual	24/01/2052	30	---	24/01	1.88	1	GGB-FXD-240152-30Y-1.875-1.000	---	---	---	---	---	---	---	---	---
3,700,000	1,000.00	1.75	Actual/Actual	18/06/2032	10	---	18/06	1.75	1	GGB-FXD-180632-10Y-1.750-1.000	---	---	---	---	---	---	---	---	---
2,200,000	1,000.00	1.13	FLR Actual/360	15/12/2027	5	---	- 15/12 - 15/03 -	---	1	GGB-FLT-151227-05Y-1.130-1.000	---	---	---	---	---	---	102.1600	B	30/12/2022

## Government Bonds Notes

Transactions Volume = (Pieces) \* (Nominal Price). Transactions Value = (Pieces) \* (Nominal Price) \* (price %) + (Accrued interest).

The Value of current coupon for the issues with NV 0.01 euro refers to NV 100 euros

FLR: Floating Interest Rate.

[1] - The Expiration Date of the interest bearing period and the Date for coupon payment.

## Treasury Bills &amp; Zero Coupon Government Bonds

Issue Date	13-Week Maturity									26-Week Maturity									52-Week Maturity								
	Exp. Date	Initial Rate	Num Listed Bonds	Nominal price	Issue price	Last Trade Price	Last Trade Date	Volume Traded	Note	Exp. Date	Initial Rate	Num Listed Bonds	Nominal price	Issue price	Last Trade Price	Last Trade Date	Volume Traded	Note	Exp. Date	Initial Rate	Num Listed Bonds	Nominal price	Issue price	Last Trade Price	Last Trade Date	Volume Traded	Note
10/06/2022	---	---	---	---	---	---	---	---	---	---	---	---	---	---	---	---	---	---	09/06/2023	0.83	1,600,000	1,000.00	991.68	---	---	---	---
09/09/2022	---	---	---	---	---	---	---	---	---	---	---	---	---	---	---	---	---	---	08/09/2023	1.97	1,000,000	1,000.00	980.47	---	---	---	---
09/12/2022	---	---	---	---	---	---	---	---	---	---	---	---	---	---	---	---	---	---	08/12/2023	2.73	600,000	1,000.00	973.10	---	---	---	---
10/03/2023	---	---	---	---	---	---	---	---	---	---	---	---	---	---	---	---	---	---	08/03/2024	3.75	1,000,000	1,000.00	963.46	---	---	---	---

Bonds in Circulation	Currency / Min nominal traded Value	Coupons Payment Date	Current Coupon Value	Note	Coupon	Trading Unit	Issue Date	Duration (years)	Today's Interest	A.I.C in days	Bonds	Last price of previous days		Last Outcry in Cash (euro)			Trades in Pieces	Life min	Life Max
												Price	Buy / Sell	Price	Buy / Sell	Date			
<b>Corporate Bonds in Foreign Currency and Euro</b>																			
103,746	GBP / 10	01/12	0.25	---	64	1	01/12/1930	98	2.5	360	National Mortgage Bank	2.27	05/02/1996	2.27	S	05/02/1996	---	2.27	2.27
0	GBP / 10	01/12	0.25	---	66	1	01/12/1928	100	2.5	360	National Mortgage Bank	---	---	---	---	---	---	---	---

## Government Bonds Notes

A.I.C: Accrued Interest Calculation base.

FLR: Floating Interest Rate.

The minimum tradeable Nominal Value for all Demeterialised Government Titles is 100 Euros.

(μφρ-0)

## Athex &amp; ATHEXClear Members List

Member Name	Stock Market			Derivatives Market		ATHEXClear Member				
	Address	Phone	Fax	Market Member	Remote Member	Market Maker	Proprietary	Market Maker	General Clearing	Direct Clearing
A. SARRIS SECURITIES S.A. 6, ΔΡΑΓΑΤΣΑΝΙΟΥ 6 ΑΘΗΝΑ	2103367700			a						
AEONIC SECURITIES C.I.F. P.L.C. , ΛΑΪΟΥ 6, ΓΡ. 301B, ANNA COURT	35725337600			a						
ALPHA BANK S.A. , ΣΤΑΔΙΟΥ 40 ΑΘΗΝΑ	2103260000								a	
ALPHA FINANCE INVESTMENT SERVICES SINGLE MEMBER SA 5, ΠΑΝΕΠΙΣΤΗΜΙΟΥ 45 ΑΘΗΝΑ	2103677400			a		a	a	a		a
ARGUS STOCKBROKERS LTD 25 , 25 ΛΕΩΦΟΡΟΣ ΔΗΜΟΣΘΕΝΗ ΣΕΒΕΡΗ	0035722717000			a	a		a			
ATLANTIC SECURITIES LTD 37, ΠΡΟΔΡΟΜΟΥ 37	0035722445400			a	a					
AXON SECURITIES S.A. 48, ΣΤΑΔΙΟΥ 48 ΑΘΗΝΑ	2103363800			a			a			
BETA SECURITIES S.A. 29 , Λ.ΑΛΕΞΑΝΔΡΑΣ 29 ΑΘΗΝΑ	2106478930			a		a	a			a
BNP PARIBAS S.A. , ΛΑΜΨΑΚΟΥ 2 ΑΘΗΝΑ	2107468525								a	
BOFA SECURITIES EUROPE SA , 112 AVENUE KL'BER 75116	+33 153655555			a	a					
CAPITAL SECURITIES S.A. 58, ΜΗΤΡΟΠΟΛΕΩΣ 58 ΑΘΗΝΑ	2103369700			a			a			
CITIGROUP GLOBAL MARKETS EUROPE AG 16, REUTERWEG 16	+49 691366-0			a	a					
CITIGROUP GLOBAL MARKETS LIMITED 1, 33 CANADA SQUARE -CANARY WHARF	+44 02079864000			a						
CREDIT SUISSE BANK (EUROPE), S.A. , CALLE AYALA 42, 3A PLANTA-B MADRID	+34917916000			a	a					
CREDIT SUISSE SECURITIES (EUROPE) LIMITED 1 , ONE CABOT SQUARE LONDON	+44 2078888888			a						
CYCLOS SECURITIES S.A. 39, ΧΑΡΙΛΑΟΥ ΤΡΙΚΟΥΠΗ 6-8-10 ΑΘΗΝΑ	2103364300			a			a			
DEUTSCHE BANK S.A. 1 , GREAT WINCHESTER STREET LONDON	+44 20 754 54209	00441133361437			a					
EUROBANK EQUITIES INVESTMENT FIRM SINGLE MEMBER SA , ΦΙΛΕΛΛΗΝΩΝ 10 & ΞΕΝΟΦΩΝΤΟΣ 13 ΑΘΗΝΑ	2103720425			a		a	a			a
EUROBANK S.A. , ΟΘΩΝΟΣ 8 ΑΘΗΝΑ	2103337000								a	
EUROCORP INVESTMENT SERVICES S.A. 14, ΠΛ.ΦΙΛΙΚΗΣ ΕΤΑΙΡΕΙΑΣ 14 ΑΘΗΝΑ	2107263600			a			a			a
EUROTRUST INVESTMENT FIRM SA 113, ΣΕΒΑΣΤΟΥΠΟΛΕΩΣ 113 ΑΘΗΝΑ	2103363100			a						
EUROXX SECURITIES S.A. 7, ΠΑΛΑΙΟΛΟΓΟΥ ΧΑΛΑΝΔΡΙ	(210)-6879400	(210)-6879401		a						
7, ΠΑΛΕΟΛΟΓΟΥ ΧΑΛΑΝΔΡΙ	+30 2106879400	210-6879401								
FREEDOM FINANCE EUROPE LTD , ΧΡΙΣΤΑΚΗ ΚΡΑΝΟΥ 20	035725257786				a					
G. A. PERVANAS SECURITIES- INVESTMENT SERVICES S.A. 7-9, ΣΟΦΟΚΛΕΟΥΣ 7-9 ΑΘΗΝΑ	2103727200			a						
GLOBAL CAPITAL SECURITIES & FINANCIAL SERVICES LTD 50, ΛΑΡΧΙΕΠΙΣΚΟΠΟΥ ΜΑΚΑΡΙΟΥ Γ50	0035722710710			a	a					
GREENPOST TRADING EUROPE LTD , ΚΙΜΟΝΟΣ 3, ACROPOLIS MANSIONS, 2ND FLOOR, FLAT/OFFICE 202	035722521389				a					
HELLENIC AMERICAN SECURITIES S.A. 27, ΑΝΔΡΕΑ ΠΑΠΑΝΔΡΕΟΥ 27 ΜΑΡΟΥΣΙ	2103311100			a		a	a			a
HELLENIC BANK (INVESTMENTS) LTD , ΑΥΞ.ΚΥΡΙΑΚΟΥ ΜΑΤΣΙ 31 - PO BOX 24747 NICOSIA	+357 22500100	357 22500110			a					
HSBC CONTINENTAL EUROPE 109-111, Λ.ΜΕΣΟΓΕΙΩΝ 109-111	2106960000								a	
INDEX SECURITIES S.A. 6, ΔΡΑΓΑΤΣΑΝΙΟΥ 6 ΑΘΗΝΑ	2103213920			a						
J. CHR. MAVRIKIS SECURITIES S.A. 5, ΣΟΦΟΚΛΕΟΥΣ 5 ΑΘΗΝΑ	2103216730			a						

## Athex &amp; ATHEXClear Members List

Member Name				Stock Market			Derivatives Market		ATHEXClear Member	
	Address	Phone	Fax	Market Member	Remote Member	Market Maker	Proprietary	Market Maker	General Clearing	Direct Clearing
KAPPA SECURITIES S.A.				a			a			
15, ΒΑΛΛΑΡΙΤΟΥ 15 ΑΘΗΝΑ	2103678600									
KARAMANOF SECURITIES & INVESTMENT SERVICES S.A.				a						
2, ΠΛ.ΑΓ.ΘΕΟΔΩΡΩΝ 2 ΑΘΗΝΑ	2103212947									
LAIKI FINANCIAL SERVICES LTD					a					
26, AVE. VYRONOS NICOSIA	357 22367367	357 22718567								
LEON DEPOLAS SECURITIES S.A.				a		a	a			
1, ΧΡΗΣΤΟΥ ΛΑΔΑ 1 ΑΘΗΝΑ	2103213276 -28									
MEGA EQUITY SECURITIES & FINANCIAL SERVICES PUBLIC LTD				a	a		a			
42-44, ΛΕΩΦ.ΓΡΙΒΑ ΔΙΓΕΝΗ 42-44	0035722711711									
MERIT SECURITIES S.A				a		a	a			a
5, ΣΟΦΟΚΛΕΟΥΣ 5 ΑΘΗΝΑ	2103671880									
MERRILL LYNCH INTERNATIONAL				a						
2, 2 KING EDWARD STREET LONDON	+44 20276281000									
N. CHRYSOCHOIDIS SECURITIES S.A.				a			a			a
7-9, ΣΟΦΟΚΛΕΟΥΣ 7-9 ΑΘΗΝΑ	2103213913									
NATIONAL BANK OF GREECE S.A.				a			a		a	
86, ΑΙΟΛΟΥ STR. ΑΘΗΝΑ	(210)-3341000	(210)-3228187								
68, ΑΚΑΔΙΜΙΑΣ STR. ΑΘΗΝΑ	(210)-3328817	(210)-3328678								
NATIONAL SECURITIES SINGLE MEMBER SA				a		a	a	a		
66, ΛΕΩΦΟΡΟΣ ΑΘΗΝΩΝ 128-132 & ΙΦΙΓΕΝΙΑΣ ΑΘΗΝΑ	2103328784									
NUNTIUS BROKERAGE AND INVESTMENT SERVICES S.A				a						
6, ΔΡΑΓΑΤΣΑΝΙΟΥ 6 ΑΘΗΝΑ	2103350599									
ONE PLUS CAPITAL LIMITED				a	a					
, 75 PRODROMOU AVENUE NICOSIA 1307	35722873760									
OPTIMA BANK S.A.				a		a	a	a	a	
32, ΑΙΓΙΑΛΕΙΑΣ 32 & ΠΑΡΑΔΕΙΣΟΥ ΜΑΡΟΥΣΙ	2108173663									
PANCRETA BANK S.A									a	
, ΙΚΑΡΟΥ 5	2810 338800									
PANTELAKIS SECURITIES S.A.				a		a	a	a		
57, ΕΘΝΙΚΗΣ ΑΝΤΙΣΤΑΣΕΩΣ 57, ΚΤΙΡΙΟ Β CHALANDRI	2106965000									
PEGASUS SECURITIES S.A				a			a			
17, ΒΑΛΛΑΡΙΤΟΥ 17 & ΑΜΕΡΙΚΗΣ ΑΘΗΝΑ	2103670700									
PIRAEUS BANK S.A.				a			a		a	
, ΑΜΕΡΙΚΗΣ 4 ΑΘΗΝΑ	2103335000									
PIRAEUS SECURITIES S. A.				a		a	a	a		a
10, ΣΤΑΔΙΟΥ 10 ΑΘΗΝΑ	2103354100									
PROCHOICE SECURITIES LTD				a	a					
57, ΛΕΩΦ.ΣΠΥΡΟΥ ΚΥΠΡΙΑΝΟΥ 57, ΑΚΙΝΗΤΑ Φ	035724661192									
SHARELINK SECURITIES & FINANCIAL SERVICES LTD				a			a			
6, HOUSE-ΘΕΟΤΟΚΗ 6 ΜΕΓΑΡΟ ΕΛΛΗΝΑ	+357 22554200									
SOCIETE GENERALE S.A.				a	a		a			
, 17 COURS VALMY, CEDEX	+157290504									
SOLIDUS SECURITIES S.A				a			a			a
64, ΛΟΥΙΖΗΣ ΡΙΑΝΚΟΥΡ 64 ΑΘΗΝΑ	2106900600									
ST. EM. LAVRENTAKIS SECURITIES S.A.				a			a			
7-9, ΣΟΦΟΚΛΕΟΥΣ 7-9 ΑΘΗΝΑ	2103213336									
THE CYPRUS INVESTMENT & SECURITIES CORPORATION LTD				a	a					
154, ΑΓΙΟΥ ΠΡΟΚΟΠΙΟΥ & ΠΟΣΕΙΔΩΝΟΣ 1	0035722121700									
UBS EUROPE SE				a	a					
, OPERNTURM, BOCKENHEIMER LANDSTRASSE 2-4	496921790									
UBS LIMITED					a					
1, FINSBURY AVENUE LONDON	+44 2075687135									

List of Stocks under Market Making operations

Securities	Market Maker	Start Market Making	Stock Category	Suspension Status
<b>MLS MULTIMEDIA SA (CR)</b>				
	PIRAEUS SECURITIES S. A.	01/08/2019		
<b>ALPHA ETF FTSE Athex Large Cap</b>			Exchange Traded Funds (ETFs)	
	ALPHA FINANCE INVESTMENT SERVICES SINGLE MEMBER SA	02/01/1900		
	NATIONAL SECURITIES SINGLE MEMBER SA	02/01/1900		
<b>ADMIE (IPTO) HOLDING S.A. (CR)</b>			Main Market	
	EUROBANK EQUITIES INVESTMENT FIRM SINGLE MEMBER SA	24/05/2021		
	HELLENIC AMERICAN SECURITIES S.A.	09/03/2020		
	PIRAEUS SECURITIES S. A.	29/06/2017		
<b>AEGEAN AIRLINES (CR)</b>			Main Market	
	EUROBANK EQUITIES INVESTMENT FIRM SINGLE MEMBER SA	22/09/2020		
<b>ALPHA SERVICES HOLD (CR)</b>			Main Market	
	ALPHA FINANCE INVESTMENT SERVICES SINGLE MEMBER SA	29/02/2016		
	EUROBANK EQUITIES INVESTMENT FIRM SINGLE MEMBER SA	22/10/2006		
	HELLENIC AMERICAN SECURITIES S.A.	25/07/2014		
	LEON DEPOLAS SECURITIES S.A.	04/01/2016		
	MERIT SECURITIES S.A	03/09/2012		
	NATIONAL SECURITIES SINGLE MEMBER SA	02/01/1900		
	PIRAEUS SECURITIES S. A.	28/05/2009		
<b>ALPHA TRUST (CR)</b>			Main Market	
	EUROBANK EQUITIES INVESTMENT FIRM SINGLE MEMBER SA	06/02/2023		
	LEON DEPOLAS SECURITIES S.A.	04/01/2021		
<b>ANDROMEDA SA (CR)</b>			Main Market	
	BETA SECURITIES S.A.	15/02/2021		
	OPTIMA BANK S.A.	03/04/2023		
<b>ATTICA BANK S.A. (CR)</b>			Main Market	
	EUROXX SECURITIES S.A.	22/01/2016		
	PIRAEUS SECURITIES S. A.	20/09/2017		
<b>AUSTRIACARD (CB)</b>			Main Market	
	BETA SECURITIES S.A.	23/03/2023		
	EUROBANK EQUITIES INVESTMENT FIRM SINGLE MEMBER SA	15/05/2023		
<b>AUTOHELLAS SA (CR)</b>			Main Market	
	ALPHA FINANCE INVESTMENT SERVICES SINGLE MEMBER SA	01/07/2019		
	EUROXX SECURITIES S.A.	02/07/2018		
<b>AVAX S.A. (CR)</b>			Main Market	
	EUROBANK EQUITIES INVESTMENT FIRM SINGLE MEMBER SA	14/12/2015		
	PIRAEUS SECURITIES S. A.	01/02/2021		
<b>AVE (CR)</b>			Main Market	
	EUROXX SECURITIES S.A.	05/06/2020		
<b>BRIQ PROPERTIES (CR)</b>			Main Market	
	EUROBANK EQUITIES INVESTMENT FIRM SINGLE MEMBER SA	09/09/2019		
	LEON DEPOLAS SECURITIES S.A.	22/02/2021		
<b>CC HBC AG (CR)</b>			Main Market	
	BETA SECURITIES S.A.	08/03/2021		
	NATIONAL SECURITIES SINGLE MEMBER SA	02/01/1900		
	PIRAEUS SECURITIES S. A.	04/05/2015		
<b>CENERGY HOLDINGS (CB)</b>			Main Market	
	ALPHA FINANCE INVESTMENT SERVICES SINGLE MEMBER SA	02/01/2016		
	EUROBANK EQUITIES INVESTMENT FIRM SINGLE MEMBER SA	02/01/2016		
	OPTIMA BANK S.A.	14/03/2022		
	PANTELAKIS SECURITIES S.A.	27/12/2022		
<b>CNL CAPITAL (CR)</b>			Main Market	
	MERIT SECURITIES S.A	01/10/2018		
<b>DIMAND (CR)</b>			Main Market	
	ALPHA FINANCE INVESTMENT SERVICES SINGLE MEMBER SA	08/08/2022		
	EUROBANK EQUITIES INVESTMENT FIRM SINGLE MEMBER SA	08/08/2022		
	PANTELAKIS SECURITIES S.A.	15/05/2023		
<b>EKTER SA (CR)</b>			Main Market	
	BETA SECURITIES S.A.	26/09/2022		
	EUROBANK EQUITIES INVESTMENT FIRM SINGLE MEMBER SA	16/10/2017		
	LEON DEPOLAS SECURITIES S.A.	21/05/2018		
<b>ELASTRON (CR)</b>			Main Market	
	LEON DEPOLAS SECURITIES S.A.	20/02/2017		
<b>ELLAKTOR (CR)</b>			Main Market	
	ALPHA FINANCE INVESTMENT SERVICES SINGLE MEMBER SA	18/03/2019		
	EUROBANK EQUITIES INVESTMENT FIRM SINGLE MEMBER SA	01/06/2012		
	EUROXX SECURITIES S.A.	24/09/2018		
	NATIONAL SECURITIES SINGLE MEMBER SA	02/01/1900		
	PIRAEUS SECURITIES S. A.	22/10/2018		

## List of Stocks under Market Making operations

Securities	Stock Category
Market Maker	Start Market Making
<b>ELTON SA (CR)</b>	Main Market
BETA SECURITIES S.A.	03/09/2012
EUROBANK EQUITIES INVESTMENT FIRM SINGLE MEMBER SA	28/11/2022
OPTIMA BANK S.A.	30/01/2023
<b>ELVALHALCOR (CR)</b>	Main Market
ALPHA FINANCE INVESTMENT SERVICES SINGLE MEMBER SA	07/05/2018
BETA SECURITIES S.A.	09/01/2023
EUROBANK EQUITIES INVESTMENT FIRM SINGLE MEMBER SA	07/05/2018
<b>ENTERSOFT (CR)</b>	Main Market
ALPHA FINANCE INVESTMENT SERVICES SINGLE MEMBER SA	23/03/2023
EUROBANK EQUITIES INVESTMENT FIRM SINGLE MEMBER SA	22/06/2020
<b>EUROBANK HOLDINGS (CR)</b>	Main Market
ALPHA FINANCE INVESTMENT SERVICES SINGLE MEMBER SA	09/01/2006
EUROBANK EQUITIES INVESTMENT FIRM SINGLE MEMBER SA	01/06/2012
HELLENIC AMERICAN SECURITIES S.A.	25/07/2014
LEON DEPOLAS SECURITIES S.A.	30/11/2018
MERIT SECURITIES S.A.	06/11/2017
NATIONAL SECURITIES SINGLE MEMBER SA	02/01/1900
PIRAEUS SECURITIES S. A.	28/09/2009
<b>EUROCONSULTANTS S.A. (CR)</b>	Main Market
OPTIMA BANK S.A.	01/02/2023
<b>EYDAP S.A. (CR)</b>	Main Market
ALPHA FINANCE INVESTMENT SERVICES SINGLE MEMBER SA	27/01/2020
EUROBANK EQUITIES INVESTMENT FIRM SINGLE MEMBER SA	10/06/2019
<b>FOURLIS (CR)</b>	Main Market
EUROBANK EQUITIES INVESTMENT FIRM SINGLE MEMBER SA	01/12/2016
PIRAEUS SECURITIES S. A.	06/03/2017
<b>GEK TERNA (CR)</b>	Main Market
BETA SECURITIES S.A.	08/03/2021
EUROBANK EQUITIES INVESTMENT FIRM SINGLE MEMBER SA	24/05/2021
PIRAEUS SECURITIES S. A.	29/08/2019
<b>GR. SARANTIS S.A. (CR)</b>	Main Market
BETA SECURITIES S.A.	14/05/2012
EUROBANK EQUITIES INVESTMENT FIRM SINGLE MEMBER SA	24/10/2016
<b>HELLENIC EXCHANGES-A.S.E. (CR)</b>	Main Market
HELLENIC AMERICAN SECURITIES S.A.	01/09/2014
NATIONAL SECURITIES SINGLE MEMBER SA	02/01/1900
PIRAEUS SECURITIES S. A.	04/05/2015
<b>HELLENIO ENERGY (CR)</b>	Main Market
HELLENIC AMERICAN SECURITIES S.A.	14/09/2015
PIRAEUS SECURITIES S. A.	20/03/2017
<b>IDEAL HOLDINGS (CR)</b>	Main Market
EUROBANK EQUITIES INVESTMENT FIRM SINGLE MEMBER SA	07/06/2021
PIRAEUS SECURITIES S. A.	07/06/2021
<b>INTERCONTINENTAL (CR)</b>	Main Market
LEON DEPOLAS SECURITIES S.A.	03/06/2019
<b>INTERLIFE G.C.I.(CR)</b>	Main Market
BETA SECURITIES S.A.	24/10/2022
<b>INTERWOOD-XYLEMPORIA (CR)</b>	Main Market
EUROBANK EQUITIES INVESTMENT FIRM SINGLE MEMBER SA	05/07/2021
PANTELAKIS SECURITIES S.A.	01/07/2021
<b>INTRAKAT (CR)</b>	Main Market
BETA SECURITIES S.A.	04/10/2021
PANTELAKIS SECURITIES S.A.	10/10/2022
<b>JUMBO SA (CR)</b>	Main Market
BETA SECURITIES S.A.	01/02/2021
EUROBANK EQUITIES INVESTMENT FIRM SINGLE MEMBER SA	25/05/2020
MERIT SECURITIES S.A.	06/11/2017
PIRAEUS SECURITIES S. A.	06/03/2017
<b>KLOUKINAS - LAPPAS SA (CR)</b>	Main Market
OPTIMA BANK S.A.	02/01/2023
<b>KRI-KRI S.A. (CR)</b>	Main Market
EUROBANK EQUITIES INVESTMENT FIRM SINGLE MEMBER SA	07/05/2018
LEON DEPOLAS SECURITIES S.A.	16/01/2017
<b>LAMDA DEVELOPMENT SA (CR)</b>	Main Market
EUROBANK EQUITIES INVESTMENT FIRM SINGLE MEMBER SA	08/12/2014
PANTELAKIS SECURITIES S.A.	06/11/2017
PIRAEUS SECURITIES S. A.	29/06/2017

## List of Stocks under Market Making operations

Securities	Stock Category
Market Maker	Start Market Making
<b>LAMPSA HOTEL SA (CR)</b>	<b>Main Market</b>
LEON DEPOLAS SECURITIES S.A.	16/01/2017
<b>MIG (CR)</b>	<b>Main Market</b>
EUROBANK EQUITIES INVESTMENT FIRM SINGLE MEMBER SA	23/03/2015
PIRAEUS SECURITIES S. A.	02/02/2009
<b>MOTOR OIL (CR)</b>	<b>Main Market</b>
BETA SECURITIES S.A.	08/03/2021
EUROBANK EQUITIES INVESTMENT FIRM SINGLE MEMBER SA	22/10/2006
LEON DEPOLAS SECURITIES S.A.	01/04/2019
MERIT SECURITIES S.A.	25/02/2019
NATIONAL SECURITIES SINGLE MEMBER SA	02/01/1900
PIRAEUS SECURITIES S. A.	04/05/2015
<b>MPLE KEDROS (CR)</b>	<b>Main Market</b>
MERIT SECURITIES S.A.	30/09/2022
<b>MYTILINEOS (CR)</b>	<b>Main Market</b>
ALPHA FINANCE INVESTMENT SERVICES SINGLE MEMBER SA	15/04/2019
BETA SECURITIES S.A.	11/04/2022
EUROBANK EQUITIES INVESTMENT FIRM SINGLE MEMBER SA	20/09/2017
MERIT SECURITIES S.A.	25/02/2019
NATIONAL SECURITIES SINGLE MEMBER SA	02/01/1900
PIRAEUS SECURITIES S. A.	04/05/2015
<b>NATIONAL BANK (CR)</b>	<b>Main Market</b>
ALPHA FINANCE INVESTMENT SERVICES SINGLE MEMBER SA	09/01/2006
EUROBANK EQUITIES INVESTMENT FIRM SINGLE MEMBER SA	22/10/2006
HELLENIC AMERICAN SECURITIES S.A.	25/07/2014
LEON DEPOLAS SECURITIES S.A.	20/05/2015
MERIT SECURITIES S.A.	03/09/2012
NATIONAL SECURITIES SINGLE MEMBER SA	02/01/1900
PIRAEUS SECURITIES S. A.	08/09/2008
<b>OPAP (CR)</b>	<b>Main Market</b>
ALPHA FINANCE INVESTMENT SERVICES SINGLE MEMBER SA	09/01/2006
BETA SECURITIES S.A.	11/04/2022
EUROBANK EQUITIES INVESTMENT FIRM SINGLE MEMBER SA	22/10/2006
HELLENIC AMERICAN SECURITIES S.A.	25/07/2014
MERIT SECURITIES S.A.	20/03/2017
NATIONAL SECURITIES SINGLE MEMBER SA	02/01/1900
PIRAEUS SECURITIES S. A.	04/05/2015
<b>OTE (CR)</b>	<b>Main Market</b>
ALPHA FINANCE INVESTMENT SERVICES SINGLE MEMBER SA	09/01/2006
BETA SECURITIES S.A.	11/04/2022
EUROBANK EQUITIES INVESTMENT FIRM SINGLE MEMBER SA	22/10/2006
HELLENIC AMERICAN SECURITIES S.A.	25/07/2014
LEON DEPOLAS SECURITIES S.A.	20/04/2015
MERIT SECURITIES S.A.	20/03/2017
NATIONAL SECURITIES SINGLE MEMBER SA	02/01/1900
PIRAEUS SECURITIES S. A.	08/09/2008
<b>P.P.A. S.A. (CR)</b>	<b>Main Market</b>
EUROBANK EQUITIES INVESTMENT FIRM SINGLE MEMBER SA	06/02/2019
<b>PAPOUTSANIS (CR)</b>	<b>Main Market</b>
BETA SECURITIES S.A.	25/11/2013
<b>PETROPOULOS PETROS (CR)</b>	<b>Main Market</b>
EUROBANK EQUITIES INVESTMENT FIRM SINGLE MEMBER SA	01/04/2019
PANTELAKIS SECURITIES S.A.	16/03/2020
<b>PIRAEUS FINANCIAL HOLD (CR)</b>	<b>Main Market</b>
ALPHA FINANCE INVESTMENT SERVICES SINGLE MEMBER SA	15/04/2019
EUROBANK EQUITIES INVESTMENT FIRM SINGLE MEMBER SA	22/10/2006
EUROXX SECURITIES S.A.	15/02/2016
HELLENIC AMERICAN SECURITIES S.A.	25/07/2014
LEON DEPOLAS SECURITIES S.A.	30/11/2018
MERIT SECURITIES S.A.	16/09/2013
NATIONAL SECURITIES SINGLE MEMBER SA	02/01/1900
PIRAEUS SECURITIES S. A.	16/02/2009



List of Stocks under Market Making operations

Securities	Market Maker	Start Market Making	Stock Category
<b>PPC (CR)</b>			<b>Main Market</b>
	ALPHA FINANCE INVESTMENT SERVICES SINGLE MEMBER SA	09/01/2006	
	BETA SECURITIES S.A.	01/02/2021	
	EUROBANK EQUITIES INVESTMENT FIRM SINGLE MEMBER SA	22/10/2006	
	HELLENIC AMERICAN SECURITIES S.A.	01/09/2014	
	MERIT SECURITIES S.A	06/11/2017	
	NATIONAL SECURITIES SINGLE MEMBER SA	02/01/1900	
	PIRAEUS SECURITIES S. A.	28/09/2009	
<b>PREMIA (CR)</b>			<b>Main Market</b>
	BETA SECURITIES S.A.	01/06/2021	
	LEON DEPOLAS SECURITIES S.A.	05/12/2022	
	PANTELAKIS SECURITIES S.A.	23/12/2021	
<b>PROFILE SA (CR)</b>			<b>Main Market</b>
	OPTIMA BANK S.A.	03/04/2023	
	PANTELAKIS SECURITIES S.A.	01/07/2019	
<b>QUALITY &amp; RELIABILITY SA (CR)</b>			<b>Main Market</b>
	OPTIMA BANK S.A.	03/01/2023	
<b>QUEST HOLDINGS (CR)</b>			<b>Main Market</b>
	BETA SECURITIES S.A.	26/03/2018	
	EUROBANK EQUITIES INVESTMENT FIRM SINGLE MEMBER SA	28/01/2019	
<b>SIDMA STEEL (CR)</b>			<b>Main Market</b>
	LEON DEPOLAS SECURITIES S.A.	06/06/2022	
	OPTIMA BANK S.A.	25/05/2023	
<b>SPACE HELLAS SA (CR)</b>			<b>Main Market</b>
	MERIT SECURITIES S.A	09/12/2022	
<b>TECHNICAL OLYMPIC SA (CR)</b>			<b>Main Market</b>
	BETA SECURITIES S.A.	04/04/2022	
<b>TERNA ENERGY (CR)</b>			<b>Main Market</b>
	EUROBANK EQUITIES INVESTMENT FIRM SINGLE MEMBER SA	24/05/2021	
	PIRAEUS SECURITIES S. A.	09/12/2019	
<b>THRACE PLASTICS SA (CR)</b>			<b>Main Market</b>
	ALPHA FINANCE INVESTMENT SERVICES SINGLE MEMBER SA	26/03/2018	
	EUROBANK EQUITIES INVESTMENT FIRM SINGLE MEMBER SA	26/03/2018	
<b>TITAN CEMENT (CB)</b>			<b>Main Market</b>
	BETA SECURITIES S.A.	01/02/2021	
	EUROBANK EQUITIES INVESTMENT FIRM SINGLE MEMBER SA	06/11/2019	
	PIRAEUS SECURITIES S. A.	18/01/2021	
<b>TZIRAKIAN PROFIL (CR)</b>			<b>Main Market</b>
	LEON DEPOLAS SECURITIES S.A.	19/07/2021	
<b>VIOHALCO SA/NV (CB)</b>			<b>Main Market</b>
	ALPHA FINANCE INVESTMENT SERVICES SINGLE MEMBER SA	11/03/2008	
	EUROBANK EQUITIES INVESTMENT FIRM SINGLE MEMBER SA	04/03/2014	
	MERIT SECURITIES S.A	17/03/2014	

Underlying Asset				Derivatives Market													
Price max	Price min	Closing price	change	Delivery Month	Open price	Price max	Price min	Last price	Closing price	Last Bid	Last Ask	Fixing price*	Life high	Life low	Trades	Volume	Open Interest
<b>FTSE/Athex Large Cap</b> (Trade Unit: 1 Index Point x 2€, Cash Settlement)																	
3,018.91	2,972.43	3,004.40	0.92%	June 2023	3,008.00	3,018.00	2,969.00	3,002.00	3,002.00	---	---	---	3,018.00	---	150	549	5,648
				July 2023	2,971.50	2,996.00	2,951.00	2,982.00	2,982.00	---	---	---	2,996.00	---	70	302	409
				August 2023	---	---	---	---	2,991.00	---	---	---	---	---	---	---	---
				September 2023	---	---	---	---	2,995.50	---	---	---	---	---	---	---	---
				December 2023	---	---	---	---	3,010.50	---	---	---	---	---	---	---	---
				March 2024	---	---	---	---	3,025.50	---	---	---	---	---	---	---	---
<b>FTSE/Athex Banks</b> (Trade Unit: 1 Index Point x 15€, Cash Settlement)																	
1,017.34	988.03	996.12	-0.56%	June 2023	1,011.75	1,011.75	1,001.50	1,004.00	1,004.00	---	---	---	1,028.00	---	6	37	1,724
				September 2023	---	---	---	---	1,008.00	---	---	---	---	---	---	---	---
				December 2023	---	---	---	---	1,013.00	---	---	---	---	---	---	---	---
				March 2024	---	---	---	---	1,018.00	---	---	---	---	---	---	---	---
<b>MSCI GREECE REBASED</b> (Trade Unit: 1 Index Point x 2€, Cash Settlement)																	
4,782.41	4,709.36	4,754.34	0.95%	June 2023	---	---	---	---	4,680.25	---	---	---	4,734.25	---	---	---	154
				July 2023	---	---	---	---	4,629.00	---	---	---	4,559.25	---	---	---	10
				August 2023	---	---	---	---	4,633.25	---	---	---	4,563.50	---	---	---	20
				September 2023	---	---	---	---	4,738.75	---	---	---	---	---	---	---	---
				December 2023	---	---	---	---	4,762.50	---	---	---	---	---	---	---	---
				March 2024	---	---	---	---	4,786.25	---	---	---	---	---	---	---	---

Derivatives notes

Fixing prices and final open positions can be retrieved from the following path <http://www.helex.gr/el/web/guest/statistics-end-of-day-derivatives>

Underlying Asset				Derivatives Market													
Price max	Price min	Closing price	change	Delivery Month	Open price	Price max	Price min	Last price	Closing price	Last Bid	Last Ask	Fixing price*	Life high	Life low	Trades	Volume	Open Interest
1.964	1.9	1.948	2.53%	(Contract Size: 100 Securities, Physical Delivery)													
				June 2023	1.94	1.96	1.94	1.95	1.95	---	---		1.96	---	38	397	12,266
				September 2023	1.94	1.95	1.92	1.94	1.94	---	---		1.95	---	10	174	1,858
				December 2023	---	---	---	---	1.92	---	---		---	---	---	---	---
				March 2024	---	---	---	---	1.93	---	---		---	---	---	---	---
9.85	9.31	9.84	5.69%	(Contract Size: 100 Securities, Physical Delivery)													
				June 2023	9.44	9.90	9.41	9.85	9.85	---	---		9.90	---	137	454	1,508
				September 2023	---	---	---	---	9.45	---	---		8.56	---	---	---	6
				December 2023	---	---	---	---	9.41	---	---		---	---	---	---	---
				March 2024	---	---	---	---	9.46	---	---		---	---	---	---	---
1.478	1.429	1.44	-0.35%	(Contract Size: 100 Securities, Physical Delivery)													
				June 2023	1.46	1.48	1.43	1.44	1.44	---	---		1.52	---	355	13,582	199,681
				September 2023	1.47	1.48	1.46	1.46	1.46	---	---		1.48	---	11	251	270
				December 2023	---	---	---	---	1.46	---	---		---	---	---	---	---
				March 2024	---	---	---	---	1.47	---	---		---	---	---	---	---
14.76	14.5	14.64	0.97%	(Contract Size: 100 Securities, Physical Delivery)													
				June 2023	14.50	14.70	14.50	14.70	14.70	---	---		14.70	---	5	12	100
				September 2023	---	---	---	---	14.59	---	---		---	---	---	---	---
				December 2023	---	---	---	---	14.66	---	---		---	---	---	---	---
				March 2024	---	---	---	---	14.74	---	---		---	---	---	---	---
1.058	1.006	1.046	5.02%	(Contract Size: 100 Securities, Physical Delivery)													
				June 2023	0.990	1.10	0.990	1.05	1.05	---	---		1.10	---	12	37	507
				September 2023	---	---	---	---	1.00	---	---		---	---	---	---	---
				December 2023	---	---	---	---	1.01	---	---		---	---	---	---	---
				March 2024	---	---	---	---	1.01	---	---		---	---	---	---	---
28.27	27.8	27.92	-0.64%	(Contract Size: 100 Securities, Physical Delivery)													
				June 2023	---	---	---	---	27.33	---	---		28.84	---	---	---	241
				September 2023	---	---	---	---	28.27	---	---		---	---	---	---	---
				December 2023	---	---	---	---	28.42	---	---		---	---	---	---	---
				March 2024	---	---	---	---	28.56	---	---		---	---	---	---	---
5.65	5.48	5.51	-1.25%	(Contract Size: 100 Securities, Physical Delivery)													
				June 2023	5.61	5.62	5.48	5.50	5.50	---	---		5.62	---	71	424	6,112
				September 2023	5.70	5.70	5.41	5.41	5.41	---	---		5.70	---	4	6	5
				December 2023	---	---	---	---	5.64	---	---		---	---	---	---	---
				March 2024	---	---	---	---	5.67	---	---		---	---	---	---	---

Derivatives notes

Fixing prices and final open positions can be retrieved from the following path <http://www.helex.gr/el/web/guest/statistics-end-of-day-derivatives>

Underlying Asset				Derivatives Market													
Price max	Price min	Closing price	change	Delivery Month	Open price	Price max	Price min	Last price	Closing price	Last Bid	Last Ask	Fixing price*	Life high	Life low	Trades	Volume	Open Interest
<b>ELLAKTOR (CR)</b>				(Contract Size: 100 Securities, Physical Delivery)													
2.285	2.185	2.275	3.41%	June 2023	2.24	2.28	2.23	2.28	2.28	---	---	---	2.28	---	16	44	1,094
				September 2023	---	---	---	---	2.21	---	---	---	---	---	---	---	---
				December 2023	---	---	---	---	2.22	---	---	---	---	---	---	---	---
				March 2024	---	---	---	---	2.24	---	---	---	---	---	---	---	---
<b>ELVALHALCOR (CR)</b>				(Contract Size: 100 Securities, Physical Delivery)													
1.86	1.82	1.86	2.54%	June 2023	1.82	1.86	1.82	1.86	1.86	---	---	---	1.86	---	7	12	1,513
				September 2023	---	---	---	---	1.80	---	---	---	1.72	---	---	---	1
				December 2023	---	---	---	---	1.83	---	---	---	---	---	---	---	---
				March 2024	---	---	---	---	1.84	---	---	---	---	---	---	---	---
<b>EUROBANK HOLDINGS (CR)</b>				(Contract Size: 100 Securities, Physical Delivery)													
1.5695	1.52	1.5235	-1.04%	June 2023	1.55	1.57	1.52	1.52	1.52	---	---	---	1.71	---	236	13,752	47,988
				September 2023	---	---	---	---	1.57	---	---	---	1.58	---	---	---	3
				December 2023	---	---	---	---	1.56	---	---	---	---	---	---	---	---
				March 2024	---	---	---	---	1.56	---	---	---	---	---	---	---	---
<b>EYDAP S.A. (CR)</b>				(Contract Size: 100 Securities, Physical Delivery)													
6.93	6.73	6.85	1.78%	June 2023	6.78	6.89	6.78	6.87	6.87	---	---	---	6.95	---	12	39	552
				September 2023	---	---	---	---	6.58	---	---	---	6.83	---	---	---	---
				December 2023	---	---	---	---	6.81	---	---	---	---	---	---	---	---
				March 2024	---	---	---	---	6.84	---	---	---	---	---	---	---	---
<b>FOURLIS (CR)</b>				(Contract Size: 100 Securities, Physical Delivery)													
4.46	4.28	4.46	4.21%	June 2023	4.32	4.43	4.31	4.43	4.43	---	---	---	4.43	---	30	130	1,042
				September 2023	---	---	---	---	4.31	---	---	---	---	---	---	---	---
				December 2023	---	---	---	---	4.33	---	---	---	---	---	---	---	---
				March 2024	---	---	---	---	4.35	---	---	---	---	---	---	---	---
<b>GEK TERNA (CR)</b>				(Contract Size: 100 Securities, Physical Delivery)													
14	13.42	13.96	1.90%	June 2023	13.76	14.02	13.55	14.01	14.01	---	---	---	14.02	---	19	90	8,214
				September 2023	---	---	---	---	13.79	---	---	---	---	---	---	---	---
				December 2023	---	---	---	---	13.85	---	---	---	---	---	---	---	---
				March 2024	---	---	---	---	13.92	---	---	---	---	---	---	---	---
<b>HELLENIC EXCHANGES-A.S.E. (CR)</b>				(Contract Size: 100 Securities, Physical Delivery)													
5.3	5.09	5.29	4.54%	June 2023	4.99	5.18	4.99	5.18	5.18	---	---	---	5.18	---	36	128	1,981
				September 2023	---	---	---	---	4.98	---	---	---	4.99	---	---	---	247
				December 2023	---	---	---	---	5.12	---	---	---	---	---	---	---	---
				March 2024	---	---	---	---	5.14	---	---	---	---	---	---	---	---

Derivatives notes

Fixing prices and final open positions can be retrieved from the following path <http://www.helex.gr/el/web/guest/statistics-end-of-day-derivatives>

Underlying Asset				Derivatives Market													
Price max	Price min	Closing price	change	Delivery Month	Open price	Price max	Price min	Last price	Closing price	Last Bid	Last Ask	Fixing price*	Life high	Life low	Trades	Volume	Open Interest
<b>HELLENiQ ENERGY (CR)</b>																	
(Contract Size: 100 Securities, Physical Delivery)																	
8	7.5	7.98	3.91%	June 2023	7.69	8.06	7.65	8.01	8.01	---	---	---	8.08	---	56	160	1,419
				September 2023	7.70	7.92	7.70	7.92	7.92	---	---	---	7.92	---	2	11	15
				December 2023	---	---	---	---	7.77	---	---	---	---	---	---	---	---
				March 2024	---	---	---	---	7.81	---	---	---	---	---	---	---	---
<b>INTRACOM HOLDINGS (CR)</b>																	
(Contract Size: 100 Securities, Physical Delivery)																	
1.96	1.9	1.914	0.21%	June 2023	1.94	1.96	1.93	1.93	1.93	---	---	---	2.07	---	43	193	4,541
				September 2023	---	---	---	---	1.94	---	---	---	1.87	---	---	---	5
				December 2023	---	---	---	---	1.93	---	---	---	---	---	---	---	---
				March 2024	---	---	---	---	1.94	---	---	---	---	---	---	---	---
<b>INTRAKAT (CR)</b>																	
(Contract Size: 100 Securities, Physical Delivery)																	
1.86	1.814	1.852	2.89%	June 2023	1.86	1.88	1.83	1.87	1.87	---	---	---	1.88	---	50	301	9,351
				September 2023	---	---	---	---	1.83	---	---	---	1.83	---	---	---	1,757
				December 2023	---	---	---	---	1.82	---	---	---	---	---	---	---	---
				March 2024	---	---	---	---	1.83	---	---	---	---	---	---	---	---
<b>JUMBO SA (CR)</b>																	
(Contract Size: 100 Securities, Physical Delivery)																	
22.56	21.78	22.2	1.28%	June 2023	22.04	22.50	21.90	22.28	22.28	---	---	---	23.32	---	24	70	383
				September 2023	---	---	---	---	22.06	---	---	---	---	---	---	---	---
				December 2023	---	---	---	---	22.17	---	---	---	---	---	---	---	---
				March 2024	---	---	---	---	22.28	---	---	---	---	---	---	---	---
<b>LAMDA DEVELOPMENT SA (CR)</b>																	
(Contract Size: 100 Securities, Physical Delivery)																	
6.47	6.35	6.47	1.89%	June 2023	6.43	6.46	6.36	6.46	6.46	---	---	---	6.53	---	37	122	5,850
				September 2023	---	---	---	---	6.39	---	---	---	---	---	---	---	---
				December 2023	---	---	---	---	6.42	---	---	---	---	---	---	---	---
				March 2024	---	---	---	---	6.45	---	---	---	---	---	---	---	---
<b>MIG (CR)</b>																	
(Contract Size: 3 Securities, Physical Delivery)																	
5.33	4.73	4.975	2.58%	June 2023	5.09	5.19	4.76	4.85	4.85	---	---	---	5.80	---	28	109	1,393
				September 2023	---	---	---	---	4.88	---	---	---	---	---	---	---	---
				December 2023	---	---	---	---	4.90	---	---	---	---	---	---	---	---
				March 2024	---	---	---	---	4.93	---	---	---	---	---	---	---	---
<b>MOTOR OIL (CR)</b>																	
(Contract Size: 100 Securities, Physical Delivery)																	
24.28	23.16	24.04	5.25%	June 2023	23.38	24.30	23.38	24.12	24.12	---	---	---	25.05	---	88	501	1,883
				September 2023	22.99	22.99	22.99	22.99	22.99	---	---	---	22.99	---	1	2	196
				December 2023	---	---	---	---	23.10	---	---	---	---	---	---	---	---
				March 2024	---	---	---	---	23.21	---	---	---	---	---	---	---	---

Derivatives notes

Fixing prices and final open positions can be retrieved from the following path <http://www.helex.gr/el/web/guest/statistics-end-of-day-derivatives>

Underlying Asset				Derivatives Market													
Price max	Price min	Closing price	change	Delivery Month	Open price	Price max	Price min	Last price	Closing price	Last Bid	Last Ask	Fixing price*	Life high	Life low	Trades	Volume	Open Interest
<b>MYTILINEOS (CR)</b>																	
(Contract Size: 100 Securities, Physical Delivery)																	
29.54	29.1	29.48	1.31%	June 2023	29.30	29.55	29.17	29.54	29.54	---	---	---	29.80	---	51	195	2,444
				September 2023	28.70	29.18	28.42	29.17	29.17	---	---	---	29.40	---	14	36	49
				December 2023	---	---	---	---	29.43	---	---	---	---	---	---	---	---
				March 2024	---	---	---	---	29.58	---	---	---	---	---	---	---	---
<b>NATIONAL BANK (CR)</b>																	
(Contract Size: 100 Securities, Physical Delivery)																	
6.194	6	6.11	-0.20%	June 2023	6.22	6.22	6.05	6.12	6.12	---	---	---	6.30	---	194	2,545	22,592
				September 2023	6.05	6.05	6.05	6.05	6.05	---	---	---	6.07	---	1	1	78
				December 2023	---	---	---	---	6.19	---	---	---	---	---	---	---	---
				March 2024	---	---	---	---	6.22	---	---	---	---	---	---	---	---
<b>OPAP (CR)</b>																	
(Contract Size: 100 Securities, Physical Delivery)																	
16.51	16.17	16.33	1.43%	June 2023	15.60	15.83	15.57	15.70	15.70	---	---	---	16.21	---	31	297	1,799
				September 2023	---	---	---	---	16.20	---	---	---	---	---	---	---	---
				December 2023	---	---	---	---	16.28	---	---	---	---	---	---	---	---
				March 2024	---	---	---	---	16.36	---	---	---	---	---	---	---	---
<b>OTE (CR)</b>																	
(Contract Size: 100 Securities, Physical Delivery)																	
14.37	14.08	14.31	2.07%	June 2023	14.20	14.44	14.15	14.39	14.39	---	---	---	15.20	---	203	1,272	11,142
				September 2023	14.15	14.15	14.10	14.10	14.10	---	---	---	14.32	---	2	2	106
				December 2023	---	---	---	---	14.18	---	---	---	---	---	---	---	---
				March 2024	---	---	---	---	14.25	---	---	---	---	---	---	---	---
<b>P.P.A. S.A. (CR)</b>																	
(Contract Size: 100 Securities, Physical Delivery)																	
20.1	19.74	20.1	1.41%	June 2023	19.95	19.95	19.95	19.95	19.95	---	---	---	19.95	---	1	1	356
				September 2023	---	---	---	---	19.94	---	---	---	---	---	---	---	---
				December 2023	---	---	---	---	20.04	---	---	---	---	---	---	---	---
				March 2024	---	---	---	---	20.14	---	---	---	---	---	---	---	---
<b>PIRAEUS FINANCIAL HOLD (CR)</b>																	
(Contract Size: 100 Securities, Physical Delivery)																	
2.84	2.756	2.784	-0.57%	June 2023	2.83	2.86	2.76	2.79	2.79	---	---	---	2.88	---	304	7,901	69,409
				September 2023	2.83	2.83	2.80	2.80	2.80	---	---	---	2.88	---	10	122	103
				December 2023	---	---	---	---	2.83	---	---	---	---	---	---	---	---
				March 2024	---	---	---	---	2.85	---	---	---	---	---	---	---	---
<b>PPC (CR)</b>																	
(Contract Size: 100 Securities, Physical Delivery)																	
10	9.76	9.97	2.15%	June 2023	9.85	10.07	9.80	9.99	9.99	---	---	---	10.07	---	155	925	22,711
				September 2023	9.90	10.25	9.90	10.25	10.25	---	---	---	10.25	---	11	126	55
				December 2023	---	---	---	---	9.87	---	---	---	---	---	---	---	---
				March 2024	---	---	---	---	9.92	---	---	---	---	---	---	---	---

Derivatives notes

Fixing prices and final open positions can be retrieved from the following path <http://www.helex.gr/el/web/guest/statistics-end-of-day-derivatives>

Underlying Asset				Derivatives Market													
Price max	Price min	Closing price	change	Delivery Month	Open price	Price max	Price min	Last price	Closing price	Last Bid	Last Ask	Fixing price*	Life high	Life low	Trades	Volume	Open Interest
<b>QUEST HOLDINGS (CR)</b>				(Contract Size: 100 Securities, Physical Delivery)													
5.97	5.7	5.97	2.93%	June 2023	5.78	5.91	5.78	5.91	5.91	---	---	---	5.91	---	6	10	222
				September 2023	---	---	---	---	5.84	---	---	---	---	---	---	---	---
				December 2023	---	---	---	---	5.87	---	---	---	---	---	---	---	---
				March 2024	---	---	---	---	5.89	---	---	---	---	---	---	---	---
<b>TERNA ENERGY (CR)</b>				(Contract Size: 100 Securities, Physical Delivery)													
20.66	20.24	20.66	1.87%	June 2023	20.47	20.69	20.32	20.69	20.69	---	---	---	20.98	---	74	398	11,987
				September 2023	---	---	---	---	20.27	---	---	---	20.75	---	---	---	35
				December 2023	---	---	---	---	20.51	---	---	---	---	---	---	---	---
				March 2024	---	---	---	---	20.61	---	---	---	---	---	---	---	---
<b>TITAN CEMENT (CB)</b>				(Contract Size: 100 Securities, Physical Delivery)													
16.54	16.1	16.42	1.48%	June 2023	16.25	16.38	16.25	16.30	16.30	---	---	---	16.68	---	3	7	507
				September 2023	---	---	---	---	16.28	---	---	---	---	---	---	---	---
				December 2023	---	---	---	---	16.36	---	---	---	---	---	---	---	---
				March 2024	---	---	---	---	16.44	---	---	---	---	---	---	---	---
<b>VIOHALCO SA/NV (CB)</b>				(Contract Size: 100 Securities, Physical Delivery)													
5.76	5.6	5.7	0.71%	June 2023	5.72	5.74	5.60	5.67	5.67	---	---	---	5.74	---	147	783	5,705
				September 2023	---	---	---	---	5.57	---	---	---	4.46	---	---	---	20
				December 2023	---	---	---	---	5.72	---	---	---	---	---	---	---	---
				March 2024	---	---	---	---	5.75	---	---	---	---	---	---	---	---

Derivatives notes

Fixing prices and final open positions can be retrieved from the following path <http://www.helex.gr/el/web/guest/statistics-end-of-day-derivatives>

## FTSE/Athex Large Cap

(Trade Unit: 1 Index Point x 2€ - Exercise Style: European, Cash Settlement)

Call Options															Put Options																			
June 2023								July 2023							Other Months		June 2023								July 2023							Other Months		Exercise Price
Open price	Price max	Price min	Last price	Closing price	Volume	Open Interest	Open price	Price max	Price min	Last price	Closing price	Volume	Open Interest	Volume	Open Interest	Open price	Price max	Price min	Last price	Closing price	Volume	Open Interest	Open price	Price max	Price min	Last price	Closing price	Volume	Open Interest	Volume	Open Interest			
1,725	0.00	0.00	0.00	-	1,254.00	-	-	-	-	-	-	-	-	-	-	0.00	0.00	0.00	-	0.01	-	-	-	-	-	-	-	-	-	-	-	1,725		
1,750	0.00	0.00	0.00	-	1,229.00	-	-	-	-	-	-	-	-	-	-	0.00	0.00	0.00	-	0.01	-	-	-	-	-	-	-	-	-	-	-	1,750		
1,775	0.00	0.00	0.00	-	1,204.00	-	-	-	-	-	-	-	-	-	-	0.00	0.00	0.00	-	0.02	-	-	-	-	-	-	-	-	-	-	-	1,775		
1,800	0.00	0.00	0.00	-	1,179.00	-	-	-	-	-	-	-	-	-	-	0.00	0.00	0.00	-	0.01	-	-	-	-	-	-	-	-	-	-	-	1,800		
1,825	0.00	0.00	0.00	-	1,154.00	-	-	-	-	-	-	-	-	-	-	0.00	0.00	0.00	-	0.01	-	-	-	-	-	-	-	-	-	-	-	1,825		
1,850	0.00	0.00	0.00	-	1,129.00	-	-	-	-	-	-	-	-	-	-	0.00	0.00	0.00	-	0.01	-	-	-	-	-	-	-	-	-	-	-	1,850		
1,875	0.00	0.00	0.00	-	1,104.00	-	-	-	-	-	-	-	-	-	-	0.00	0.00	0.00	-	0.01	-	-	-	-	-	-	-	-	-	-	-	1,875		
1,900	0.00	0.00	0.00	-	1,079.00	-	-	-	-	-	-	-	-	-	-	0.00	0.00	0.00	-	0.01	-	-	-	-	-	-	-	-	-	-	-	1,900		
1,925	0.00	0.00	0.00	-	1,055.00	-	-	-	-	-	-	-	-	-	-	0.00	0.00	0.00	-	0.01	-	-	-	-	-	-	-	-	-	-	-	1,925		
1,950	0.00	0.00	0.00	-	1,030.00	-	-	-	-	-	-	-	-	-	-	0.00	0.00	0.00	-	0.01	-	-	-	-	-	-	-	-	-	-	-	1,950		
1,975	0.00	0.00	0.00	-	1,005.00	-	-	-	-	-	-	-	-	-	-	0.00	0.00	0.00	-	0.01	-	-	-	-	-	-	-	-	-	-	-	1,975		
2,000	0.00	0.00	0.00	-	980.00	-	-	-	-	-	-	-	-	-	-	0.00	0.00	0.00	-	0.01	-	-	-	-	-	-	-	-	-	-	-	2,000		
2,050	0.00	0.00	0.00	-	930.00	-	-	-	-	-	-	-	-	-	-	0.00	0.00	0.00	-	0.01	-	-	-	-	-	-	-	-	-	-	-	2,050		
2,100	0.00	0.00	0.00	-	880.00	-	-	-	-	-	-	-	-	-	-	0.00	0.00	0.00	-	0.01	-	-	-	-	-	-	-	-	-	-	-	2,100		
2,150	0.00	0.00	0.00	-	830.00	-	-	-	-	-	-	-	-	-	-	0.00	0.00	0.00	-	0.01	-	-	-	-	-	-	-	-	-	-	-	2,150		
2,200	0.00	0.00	0.00	-	780.00	-	-	-	-	-	-	-	-	-	-	0.00	0.00	0.00	-	0.01	-	-	-	-	-	-	-	-	-	-	-	2,200		
2,250	0.00	0.00	0.00	-	730.00	-	-	-	-	-	-	-	-	-	-	0.00	0.00	0.00	-	0.02	-	-	-	-	-	-	-	-	-	-	-	2,250		
2,300	0.00	0.00	0.00	-	680.00	-	-	-	-	-	-	-	-	-	-	0.00	0.00	0.00	-	0.08	-	-	-	-	-	-	-	-	-	-	-	2,300		
2,350	0.00	0.00	0.00	-	630.00	-	-	0.00	0.00	0.00	-	604.00	-	-	-	0.00	0.00	0.00	-	0.25	-	-	0.00	0.00	0.00	-	0.21	-	-	-	2,350			
2,400	0.00	0.00	0.00	-	580.00	-	-	0.00	0.00	0.00	-	555.00	-	-	-	0.00	0.00	0.00	-	0.01	-	-	0.00	0.00	0.00	-	0.47	-	-	-	2,400			
2,450	0.00	0.00	0.00	-	530.00	-	-	0.00	0.00	0.00	-	505.00	-	-	-	0.00	0.00	0.00	-	0.01	-	-	0.00	0.00	0.00	-	0.99	-	-	-	2,450			
2,500	0.00	0.00	0.00	-	480.00	-	-	0.00	0.00	0.00	-	457.00	-	-	-	0.00	0.00	0.00	-	0.02	-	-	0.00	0.00	0.00	-	1.90	-	-	-	2,500			
2,550	0.00	0.00	0.00	-	430.00	-	-	0.00	0.00	0.00	-	408.00	-	-	-	0.00	0.00	0.00	-	0.06	-	6	0.00	0.00	0.00	-	3.60	-	-	-	2,550			
2,600	0.00	0.00	0.00	-	381.00	-	20	0.00	0.00	0.00	-	361.00	-	-	-	0.00	0.00	0.00	-	0.22	-	9	0.00	0.00	0.00	-	6.40	-	-	-	2,600			
2,650	0.00	0.00	0.00	-	331.00	-	80	0.00	0.00	0.00	-	316.00	-	-	-	0.00	0.00	0.00	-	0.66	-	358	0.00	0.00	0.00	-	10.50	-	-	-	2,650			
2,700	0.00	0.00	0.00	-	282.00	-	40	0.00	0.00	0.00	-	272.00	-	-	-	0.00	0.00	0.00	-	1.70	-	253	0.00	0.00	0.00	-	17.00	-	-	-	2,700			
2,750	0.00	0.00	0.00	-	235.00	-	20	0.00	0.00	0.00	-	231.00	-	-	-	0.00	0.00	0.00	-	4.10	-	60	0.00	0.00	0.00	-	25.75	-	-	-	2,750			
2,800	0.00	0.00	0.00	-	189.00	-	142	0.00	0.00	0.00	-	193.00	-	1	-	7.50	0.00	6.50	6.50	6.50	75	40	0.00	0.00	0.00	-	37.75	-	-	-	2,800			
2,850	0.00	0.00	0.00	-	147.00	-	-	0.00	0.00	0.00	-	159.00	-	-	-	0.00	0.00	0.00	-	16.75	-	20	0.00	0.00	0.00	-	53.00	-	20	-	2,850			
2,900	123.00	123.00	123.00	123.00	123.00	5	6	0.00	0.00	0.00	-	128.00	-	-	-	21.50	123.00	21.50	25.25	25.25	45	23	0.00	0.00	0.00	-	72.50	-	-	-	2,900			
2,950	0.00	0.00	0.00	-	79.00	-	41	0.00	0.00	0.00	-	102.00	-	60	-	39.25	0.00	39.25	39.25	39.25	20	21	0.00	0.00	0.00	-	95.50	-	40	-	2,950			
3,000	0.00	0.00	0.00	-	53.50	-	5	0.00	0.00	0.00	-	79.00	-	-	-	48.00	0.00	48.00	48.00	48.00	5	35	0.00	0.00	0.00	-	123.00	-	40	-	3,000			
3,050	30.00	37.50	30.00	37.50	37.50	6	5	0.00	0.00	0.00	-	60.00	-	1	-	0.00	37.50	0.00	-	104.00	-	150	0.00	0.00	0.00	-	154.00	-	21	-	3,050			
3,100	0.00	0.00	0.00	-	21.25	-	-	0.00	0.00	0.00	-	45.00	-	-	-	0.00	0.00	0.00	-	140.00	-	-	0.00	0.00	0.00	-	189.00	-	-	-	3,100			
3,150	0.00	0.00	0.00	-	12.25	-	-	0.00	0.00	0.00	-	33.00	-	-	-	0.00	0.00	0.00	-	181.00	-	-	0.00	0.00	0.00	-	226.00	-	-	-	3,150			
3,200	0.00	0.00	0.00	-	6.70	-	-	0.00	0.00	0.00	-	23.75	-	-	-	0.00	0.00	0.00	-	226.00	-	-	0.00	0.00	0.00	-	267.00	-	-	-	3,200			



FTSE/Athex Large Cap

(Trade Unit: 1 Index Point x 2€ - Exercise Style: European, Cash Settlement)

	Call Options														Put Options																		
	June 2023							July 2023							Other Months		June 2023							July 2023							Other Months		
Exercise Price	Open price	Price max	Price min	Last price	Closing price	Volume	Open Interest	Open price	Price max	Price min	Last price	Closing price	Volume	Open Interest	Volume	Open Interest	Open price	Price max	Price min	Last price	Closing price	Volume	Open Interest	Open price	Price max	Price min	Last price	Closing price	Volume	Open Interest	Volume	Open Interest	Exercise Price
3,250	0.00	0.00	0.00	-	3.40	-	-	0.00	0.00	0.00	-	16.75	-	-			0.00	0.00	0.00	-	272.00	-	-	0.00	0.00	0.00	-	310.00	-	-			3,250
Totals:						11	359						0	62	0	0						145	975					0	121	0	0		
Number of Trades:							3							0	0							7						0	0				

ALPHA SERVICES HOLD (CR)

(Contract Size: 100 Securities, Exercise Style: American, Physical Delivery)

Call Options														Put Options																			
Exercise Price	June 2023						July 2023						Other Months		June 2023						July 2023						Other Months		Exercise Price				
	Open price	Price max	Price min	Last price	Closing price	Volume	Open Interest	Open price	Price max	Price min	Last price	Closing price	Volume	Open Interest	Volume	Open Interest	Open price	Price max	Price min	Last price	Closing price	Volume	Open Interest	Open price	Price max	Price min	Last price	Closing price		Volume	Open Interest	Volume	Open Interest
0.500	0.000	0.000	0.000	0.951	-	-										0.000	0.000	0.000	0.001	-	-											0.005	
0.550	0.000	0.000	0.000	0.901	-	-										0.000	0.000	0.000	0.001	-	-											0.006	
0.600	0.000	0.000	0.000	0.851	-	-										0.000	0.000	0.000	0.001	-	-											0.006	
0.650	0.000	0.000	0.000	0.801	-	-										0.000	0.000	0.000	0.001	-	-											0.007	
0.700	0.000	0.000	0.000	0.751	-	-										0.000	0.000	0.000	0.001	-	-											0.007	
0.750	0.000	0.000	0.000	0.701	-	-										0.000	0.000	0.000	0.002	-	-											0.008	
0.800	0.000	0.000	0.000	0.651	-	-	0.000	0.000	0.000	0.653	-	-				0.000	0.000	0.000	0.001	-	-	0.000	0.000	0.000	0.002	-	-				0.008		
0.850	0.000	0.000	0.000	0.601	-	-	0.000	0.000	0.000	0.603	-	-				0.000	0.000	0.000	0.001	-	-	0.000	0.000	0.000	0.004	-	-				0.009		
0.900	0.000	0.000	0.000	0.551	-	-	0.000	0.000	0.000	0.553	-	-				0.000	0.000	0.000	0.001	-	-	0.000	0.000	0.000	0.001	-	-				0.009		
0.950	0.000	0.000	0.000	0.501	-	-	0.000	0.000	0.000	0.504	-	-				0.000	0.000	0.000	0.003	-	-	0.000	0.000	0.000	0.001	-	-				0.010		
1.000	0.000	0.000	0.000	0.451	-	-	0.000	0.000	0.000	0.455	-	-				0.000	0.000	0.000	0.007	-	-	0.000	0.000	0.000	0.002	-	-				0.010		
1.100	0.000	0.000	0.000	0.352	-	-	0.000	0.000	0.000	0.360	-	-				0.000	0.000	0.000	0.001	-	-	0.000	0.000	0.000	0.006	-	-				0.011		
1.200	0.000	0.000	0.000	0.257	-	-	0.000	0.000	0.000	0.272	-	-				0.000	0.000	0.000	0.006	-	20	0.000	0.000	0.000	0.018	-	-				0.012		
1.300	0.000	0.000	0.000	0.172	-	-	0.000	0.000	0.000	0.195	-	-				0.000	0.000	0.000	0.021	-	-	0.000	0.000	0.000	0.041	-	-				0.013		
1.400	0.000	0.000	0.000	0.104	-	-	0.000	0.000	0.000	0.133	-	-				0.000	0.000	0.000	0.053	-	-	0.000	0.000	0.000	0.079	-	-				0.014		
1.500	0.000	0.000	0.000	0.056	-	-	0.000	0.000	0.000	0.086	-	-				0.000	0.000	0.000	0.105	-	-	0.000	0.000	0.000	0.132	-	-				0.015		
1.600	0.000	0.000	0.000	0.028	-	-	0.000	0.000	0.000	0.052	-	-				0.000	0.000	0.000	0.176	-	-	0.000	0.000	0.000	0.198	-	-				0.016		
1.700	0.000	0.000	0.000	0.012	-	-	0.000	0.000	0.000	0.031	-	-				0.000	0.000	0.000	0.261	-	-	0.000	0.000	0.000	0.276	-	-				0.017		
1.800	0.000	0.000	0.000	0.005	-	-	0.000	0.000	0.000	0.017	-	-				0.000	0.000	0.000	0.354	-	-	0.000	0.000	0.000	0.363	-	-				0.018		
1.900	0.000	0.000	0.000	0.002	-	-	0.000	0.000	0.000	0.009	-	-				0.000	0.000	0.000	0.451	-	-	0.000	0.000	0.000	0.456	-	-				0.019		
2.000	0.000	0.000	0.000	0.001	-	-										0.000	0.000	0.000	0.550	-	-										0.020		
Totals:						0	0							0	0							0	20							0	0	0	0
Number of Trades:						0								0								0.00								0		0	

NATIONAL BANK (CR)

(Contract Size: 100 Securities, Exercise Style: American, Physical Delivery)

Call Options														Put Options																		
June 2023							July 2023							Other Months		June 2023							July 2023							Other Months		Exercise Price
Open price	Price max	Price min	Last price	Closing price	Volume	Open Interest	Open price	Price max	Price min	Last price	Closing price	Volume	Open Interest	Volume	Open Interest	Open price	Price max	Price min	Last price	Closing price	Volume	Open Interest	Open price	Price max	Price min	Last price	Closing price	Volume	Open Interest	Volume	Open Interest	
1.900	0.000	0.000	0.000	4.22	-	-										0.000	0.000	0.000	0.001	-	-											0.019
2.000	0.000	0.000	0.000	4.12	-	-										0.000	0.000	0.000	0.002	-	-											0.020
2.200	0.000	0.000	0.000	3.92	-	-										0.000	0.000	0.000	0.001	-	-											0.022
2.400	0.000	0.000	0.000	3.72	-	-										0.000	0.000	0.000	0.001	-	-											0.024
2.600	0.000	0.000	0.000	3.52	-	-										0.000	0.000	0.000	0.001	-	-											0.026
2.800	0.000	0.000	0.000	3.32	-	-										0.000	0.000	0.000	0.001	-	-											0.028
3.000	0.000	0.000	0.000	3.12	-	-										0.000	0.000	0.000	0.001	-	-											0.030
3.200	0.000	0.000	0.000	2.92	-	-	0.000	0.000	0.000		2.93	-	-			0.000	0.000	0.000	0.001	-	-	0.000	0.000	0.000	0.001	-	-					0.032
3.400	0.000	0.000	0.000	2.72	-	-	0.000	0.000	0.000		2.73	-	-			0.000	0.000	0.000	0.001	-	-	0.000	0.000	0.000	0.001	-	-					0.034
3.600	0.000	0.000	0.000	2.52	-	-	0.000	0.000	0.000		2.53	-	-			0.000	0.000	0.000	0.002	-	-	0.000	0.000	0.000	0.001	-	-					0.036
3.800	0.000	0.000	0.000	2.32	-	-	0.000	0.000	0.000		2.33	-	-			0.000	0.000	0.000	0.001	-	-	0.000	0.000	0.000	0.001	-	-					0.038
4.000	0.000	0.000	0.000	2.12	-	-	0.000	0.000	0.000		2.14	-	-			0.000	0.000	0.000	0.001	-	-	0.000	0.000	0.000	0.003	-	-					0.040
4.400	0.000	0.000	0.000	1.73	-	-	0.000	0.000	0.000		1.75	-	-			0.000	0.000	0.000	0.001	-	-	0.000	0.000	0.000	0.012	-	-					0.044
4.800	0.000	0.000	0.000	1.33	-	-	0.000	0.000	0.000		1.37	-	-			0.000	0.000	0.000	0.003	-	-	0.000	0.000	0.000	0.040	-	-					0.048
5.200	0.000	0.000	0.000	0.947	-	7	0.000	0.000	0.000		1.04	-	-			0.000	0.000	0.000	0.021	-	270	0.000	0.000	0.000	0.100	-	-					0.052
5.600	0.000	0.000	0.000	0.608	-	-	0.000	0.000	0.000		0.747	-	-			0.000	0.000	0.000	0.082	-	-	0.000	0.000	0.000	0.210	-	-					0.056
6.000	0.000	0.000	0.000	0.344	-	-	0.000	0.000	0.000		0.513	-	-			0.000	0.000	0.000	0.218	-	-	0.000	0.000	0.000	0.376	-	-					0.060
6.400	0.000	0.000	0.000	0.169	-	-	0.000	0.000	0.000		0.335	-	-			0.000	0.000	0.000	0.443	-	-	0.000	0.000	0.000	0.597	-	-					0.064
6.800	0.000	0.000	0.000	0.072	-	-	0.000	0.000	0.000		0.208	-	-			0.000	0.000	0.000	0.745	-	-	0.000	0.000	0.000	0.870	-	-					0.068
7.200	0.000	0.000	0.000	0.026	-	-	0.000	0.000	0.000		0.126	-	-			0.000	0.000	0.000	1.10	-	-	0.000	0.000	0.000	1.19	-	-					0.072
7.600	0.000	0.000	0.000	0.009	-	-	0.000	0.000	0.000		0.073	-	-			0.000	0.000	0.000	1.48	-	-	0.000	0.000	0.000	1.54	-	-					0.076
8.000	0.000	0.000	0.000	0.002	-	-	0.000	0.000	0.000		0.041	-	-			0.000	0.000	0.000	1.88	-	-	0.000	0.000	0.000	1.91	-	-					0.080
Totals:					0	7						0	0	0							0	270						0	10	0	0	
Number of Trades:					0							0	0								0.00						0		0			

OPAP (CR)

(Contract Size: 100 Securities, Exercise Style: American, Physical Delivery)

Call Options														Put Options																		
Exercise Price	June 2023						July 2023						Other Months		June 2023						July 2023						Other Months		Exercise Price			
	Open price	Price max	Price min	Last price	Closing price	Volume	Open Interest	Open price	Price max	Price min	Last price	Closing price	Volume	Open Interest	Volume	Open Interest	Open price	Price max	Price min	Last price	Closing price	Volume	Open Interest	Open price	Price max	Price min	Last price	Closing price		Volume	Open Interest	Volume
8.800	0.000	0.000	0.000		7.31	-	-						-	-			0.000	0.000	0.000		0.001	-	-					-	-			0.088
9.200	0.000	0.000	0.000		6.91	-	-						-	-			0.000	0.000	0.000		0.001	-	-					-	-			0.092
9.600	0.000	0.000	0.000		6.51	-	-						-	-			0.000	0.000	0.000		0.001	-	-					-	-			0.096
10.000	0.000	0.000	0.000		6.11	-	-	0.000	0.000	0.000		6.13	-	-			0.000	0.000	0.000		0.001	-	-	0.000	0.000	0.000		0.001	-	-		0.100
11.000	0.000	0.000	0.000		5.11	-	-	0.000	0.000	0.000		5.13	-	-			0.000	0.000	0.000		0.001	-	-	0.000	0.000	0.000		0.001	-	-		0.110
12.000	0.000	0.000	0.000		4.11	-	-	0.000	0.000	0.000		4.14	-	-			0.000	0.000	0.000		0.001	-	-	0.000	0.000	0.000		0.001	-	-		0.120
13.000	0.000	0.000	0.000		3.12	-	-	0.000	0.000	0.000		3.15	-	-			0.000	0.000	0.000		0.001	-	-	0.000	0.000	0.000		0.006	-	-		0.130
14.000	0.000	0.000	0.000		2.13	-	-	0.000	0.000	0.000		2.19	-	-			0.000	0.000	0.000		0.012	-	-	0.000	0.000	0.000		0.046	-	-		0.140
15.000	0.000	0.000	0.000		1.22	-	-	0.000	0.000	0.000		1.35	-	-			0.000	0.000	0.000		0.103	-	-	0.000	0.000	0.000		0.201	-	-		0.150
16.000	0.000	0.000	0.000		0.538	-	50	0.000	0.000	0.000		0.705	-	-			0.000	0.000	0.000		0.420	-	-	0.000	0.000	0.000		0.558	-	-		0.160
17.000	0.000	0.000	0.000		0.172	-	-	0.000	0.000	0.000		0.306	-	-			0.000	0.000	0.000		1.06	-	-	0.000	0.000	0.000		1.16	-	-		0.170
18.000	0.000	0.000	0.000		0.038	-	-	0.000	0.000	0.000		0.110	-	-			0.000	0.000	0.000		1.93	-	-	0.000	0.000	0.000		1.97	-	-		0.180
19.000	0.000	0.000	0.000		0.006	-	-	0.000	0.000	0.000		0.033	-	-			0.000	0.000	0.000		2.90	-	-	0.000	0.000	0.000		2.91	-	-		0.190
20.000	0.000	0.000	0.000		0.001	-	-	0.000	0.000	0.000		0.009	-	-			0.000	0.000	0.000		3.90	-	-	0.000	0.000	0.000		3.90	-	-		0.200
22.000	0.000	0.000	0.000		0.001	-	-	0.000	0.000	0.000		0.001	-	-			0.000	0.000	0.000		5.90	-	-	0.000	0.000	0.000		5.90	-	-		0.220
Totals:						0	50					0	0	0							0	0									0	0
Number of Trades:						0						0	0	0							0.00									0	0	

OTE (CR)

(Contract Size: 100 Securities, Exercise Style: American, Physical Delivery)

Call Options														Put Options																					
June 2023							July 2023							Other Months		June 2023							July 2023							Other Months		Exercise Price			
Open price	Price max	Price min	Last price	Closing price	Volume	Open Interest	Open price	Price max	Price min	Last price	Closing price	Volume	Open Interest	Volume	Open Interest	Open price	Price max	Price min	Last price	Closing price	Volume	Open Interest	Open price	Price max	Price min	Last price	Closing price	Volume	Open Interest	Volume	Open Interest				
9.200	0.000	0.000	0.000	4.83	-	-	0.000	0.000	0.000	4.85	-	-				0.000	0.000	0.000	0.001	-	-	0.000	0.000	0.000	0.001	-	-				0.092				
9.600	0.000	0.000	0.000	4.43	-	-	0.000	0.000	0.000	4.45	-	-				0.000	0.000	0.000	0.001	-	-	0.000	0.000	0.000	0.001	-	-				0.096				
10.000	0.000	0.000	0.000	4.03	-	-	0.000	0.000	0.000	4.05	-	-				0.000	0.000	0.000	0.001	-	-	0.000	0.000	0.000	0.001	-	-				0.100				
11.000	0.000	0.000	0.000	3.03	-	-	0.000	0.000	0.000	3.06	-	-				0.000	0.000	0.000	0.001	-	-	0.000	0.000	0.000	0.004	-	-				0.110				
12.000	0.000	0.000	0.000	2.03	-	-	0.000	0.000	0.000	2.10	-	-				0.000	0.000	0.000	0.001	-	-	0.000	0.000	0.000	0.041	-	-				0.120				
13.000	0.000	0.000	0.000	1.07	-	-	0.000	0.000	0.000	1.25	-	-				0.000	0.000	0.000	0.039	-	-	0.000	0.000	0.000	0.195	-	-				0.130				
14.000	0.000	0.000	0.000	0.353	-	-	0.000	0.000	0.000	0.625	-	-				0.000	0.000	0.000	0.317	-	5	0.000	0.000	0.000	0.565	-	-				0.140				
15.000	0.000	0.000	0.000	0.057	-	-	0.000	0.000	0.000	0.259	-	20				0.000	0.000	0.000	1.02	-	-	0.000	0.000	0.000	1.20	-	-				0.150				
16.000	0.000	0.000	0.000	0.004	-	-	0.000	0.000	0.000	0.088	-	-				0.000	0.000	0.000	1.98	-	-	0.000	0.000	0.000	2.04	-	-				0.160				
17.000	0.000	0.000	0.000	0.001	-	-	0.000	0.000	0.000	0.025	-	-				0.000	0.000	0.000	2.98	-	-	0.000	0.000	0.000	2.98	-	-				0.170				
18.000	0.000	0.000	0.000	0.001	-	-	0.000	0.000	0.000	0.006	-	-				0.000	0.000	0.000	3.98	-	-	0.000	0.000	0.000	3.98	-	-				0.180				
19.000	0.000	0.000	0.000	0.001	-	-	0.000	0.000	0.000	0.001	-	-				0.000	0.000	0.000	4.98	-	-	0.000	0.000	0.000	4.98	-	-				0.190				
20.000	0.000	0.000	0.000	0.001	-	-					-	-				0.000	0.000	0.000	5.98	-	-					-	-				0.200				
22.000	0.000	0.000	0.000	0.001	-	-					-	-				0.000	0.000	0.000	7.98	-	-					-	-				0.220				
24.000	0.000	0.000	0.000	0.001	-	-					-	-				0.000	0.000	0.000	9.98	-	-					-	-				0.240				
Totals:					0	0					0	20	0	0							0	5										0	5	0	0
Number of Trades:					0						0		0								0.00											0		0	

PIRAEUS FINANCIAL HOLD (CR)

(Contract Size: 100 Securities, Exercise Style: American, Physical Delivery)

Call Options														Put Options																		
June 2023							July 2023							Other Months		June 2023							July 2023							Other Months		Exercise Price
Open price	Price max	Price min	Last price	Closing price	Volume	Open Interest	Open price	Price max	Price min	Last price	Closing price	Volume	Open Interest	Volume	Open Interest	Open price	Price max	Price min	Last price	Closing price	Volume	Open Interest	Open price	Price max	Price min	Last price	Closing price	Volume	Open Interest	Volume	Open Interest	
0.500	0.000	0.000	0.000	2.30	-	-										0.000	0.000	0.000	0.001	-	-											0.005
0.550	0.000	0.000	0.000	2.25	-	-										0.000	0.000	0.000	0.001	-	-											0.006
0.600	0.000	0.000	0.000	2.20	-	-										0.000	0.000	0.000	0.001	-	-											0.006
0.650	0.000	0.000	0.000	2.15	-	-										0.000	0.000	0.000	0.001	-	-											0.007
0.700	0.000	0.000	0.000	2.10	-	-										0.000	0.000	0.000	0.001	-	-											0.007
0.750	0.000	0.000	0.000	2.05	-	-										0.000	0.000	0.000	0.001	-	-											0.008
0.800	0.000	0.000	0.000	2.00	-	-										0.000	0.000	0.000	0.001	-	-											0.008
0.850	0.000	0.000	0.000	1.95	-	-										0.000	0.000	0.000	0.001	-	-											0.009
0.900	0.000	0.000	0.000	1.90	-	-										0.000	0.000	0.000	0.001	-	-											0.009
0.950	0.000	0.000	0.000	1.85	-	-										0.000	0.000	0.000	0.001	-	-											0.010
1.000	0.000	0.000	0.000	1.80	-	-										0.000	0.000	0.000	0.001	-	-											0.010
1.100	0.000	0.000	0.000	1.70	-	-										0.000	0.000	0.000	0.001	-	-											0.011
1.200	0.000	0.000	0.000	1.60	-	-										0.000	0.000	0.000	0.001	-	-											0.012
1.300	0.000	0.000	0.000	1.50	-	-										0.000	0.000	0.000	0.001	-	-											0.013
1.400	0.000	0.000	0.000	1.40	-	-										0.000	0.000	0.000	0.001	-	-											0.014
1.500	0.000	0.000	0.000	1.30	-	-										0.000	0.000	0.000	0.002	-	-											0.015
1.600	0.000	0.000	0.000	1.20	-	-	0.000	0.000	0.000		1.21	-	-			0.000	0.000	0.000	0.001	-	-	0.000	0.000	0.000		0.001	-	-				0.016
1.700	0.000	0.000	0.000	1.10	-	-	0.000	0.000	0.000		1.11	-	-			0.000	0.000	0.000	0.002	-	-	0.000	0.000	0.000		0.001	-	-				0.017
1.800	0.000	0.000	0.000	1.00	-	-	0.000	0.000	0.000		1.01	-	-			0.000	0.000	0.000	0.005	-	-	0.000	0.000	0.000		0.002	-	-				0.018
1.900	0.000	0.000	0.000	0.902	-	-	0.000	0.000	0.000		0.910	-	-			0.000	0.000	0.000	0.013	-	-	0.000	0.000	0.000		0.004	-	-				0.019
2.000	0.000	0.000	0.000	0.802	-	-	0.000	0.000	0.000		0.814	-	-			0.000	0.000	0.000	0.001	-	-	0.000	0.000	0.000		0.008	-	-				0.020
2.200	0.000	0.000	0.000	0.605	-	2	0.000	0.000	0.000		0.632	-	-			0.000	0.000	0.000	0.002	-	3	0.000	0.000	0.000		0.025	-	-				0.022
2.400	0.000	0.000	0.000	0.416	-	-	0.000	0.000	0.000		0.468	-	-			0.000	0.000	0.000	0.013	-	-	0.000	0.000	0.000		0.061	-	-				0.024
2.600	0.000	0.000	0.000	0.252	-	-	0.000	0.000	0.000		0.332	-	-			0.000	0.000	0.000	0.049	-	-	0.000	0.000	0.000		0.124	-	-				0.026
2.800	0.000	0.000	0.000	0.131	-	-	0.000	0.000	0.000		0.222	-	-			0.000	0.000	0.000	0.128	-	-	0.000	0.000	0.000		0.214	-	-				0.028
3.000	0.000	0.000	0.000	0.058	-	-	0.000	0.000	0.000		0.144	-	-			0.000	0.000	0.000	0.255	-	-	0.000	0.000	0.000		0.336	-	-				0.030
3.200	0.000	0.000	0.000	0.022	-	-	0.000	0.000	0.000		0.089	-	-			0.000	0.000	0.000	0.419	-	-	0.000	0.000	0.000		0.481	-	-				0.032
3.400	0.000	0.000	0.000	0.007	-	-	0.000	0.000	0.000		0.053	-	-			0.000	0.000	0.000	0.605	-	-	0.000	0.000	0.000		0.645	-	-				0.034
3.600	0.000	0.000	0.000	0.002	-	-	0.000	0.000	0.000		0.031	-	-			0.000	0.000	0.000	0.801	-	-	0.000	0.000	0.000		0.823	-	-				0.036
3.800	0.000	0.000	0.000	0.001	-	-	0.000	0.000	0.000		0.017	-	-			0.000	0.000	0.000	1.00	-	-	0.000	0.000	0.000		1.01	-	-				0.038
Totals:					0	2						0	0	0	0					0	3						0	0	0	0		
Number of Trades:					0							0		0						0.00							0		0			

PPC (CR)

(Contract Size: 100 Securities, Exercise Style: American, Physical Delivery)

Call Options														Put Options																			
June 2023							July 2023							Other Months		June 2023							July 2023							Other Months		Exercise Price	
Open price	Price max	Price min	Last price	Closing price	Volume	Open Interest	Open price	Price max	Price min	Last price	Closing price	Volume	Open Interest	Volume	Open Interest	Open price	Price max	Price min	Last price	Closing price	Volume	Open Interest	Open price	Price max	Price min	Last price	Closing price	Volume	Open Interest	Volume	Open Interest		
3.400	0.000	0.000	0.000	6.36	-	-										0.000	0.000	0.000	0.001	-	-											0.034	
3.600	0.000	0.000	0.000	6.16	-	-										0.000	0.000	0.000	0.001	-	-											0.036	
3.800	0.000	0.000	0.000	5.96	-	-										0.000	0.000	0.000	0.001	-	-											0.038	
4.000	0.000	0.000	0.000	5.76	-	-										0.000	0.000	0.000	0.001	-	-											0.040	
4.400	0.000	0.000	0.000	5.37	-	-										0.000	0.000	0.000	0.001	-	-											0.044	
4.800	0.000	0.000	0.000	4.97	-	-										0.000	0.000	0.000	0.001	-	-											0.048	
5.200	0.000	0.000	0.000	4.57	-	-										0.000	0.000	0.000	0.001	-	-											0.052	
5.600	0.000	0.000	0.000	4.17	-	-										0.000	0.000	0.000	0.001	-	-											0.056	
6.000	0.000	0.000	0.000	3.77	-	-	0.000	0.000	0.000		3.78	-	-			0.000	0.000	0.000	0.003	-	-	0.000	0.000	0.000	0.001	-	-					0.060	
6.400	0.000	0.000	0.000	3.37	-	-	0.000	0.000	0.000		3.38	-	-			0.000	0.000	0.000	0.011	-	-	0.000	0.000	0.000	0.002	-	-					0.064	
6.800	0.000	0.000	0.000	2.97	-	-	0.000	0.000	0.000		2.99	-	-			0.000	0.000	0.000	0.001	-	-	0.000	0.000	0.000	0.007	-	-					0.068	
7.200	0.000	0.000	0.000	2.57	-	-	0.000	0.000	0.000		2.60	-	-			0.000	0.000	0.000	0.002	-	-	0.000	0.000	0.000	0.019	-	-					0.072	
7.600	0.000	0.000	0.000	2.17	-	61	0.000	0.000	0.000		2.23	-	-			0.000	0.000	0.000	0.002	-	3	0.000	0.000	0.000	0.042	-	-					0.076	
8.000	0.000	0.000	0.000	1.78	-	-	0.000	0.000	0.000		1.87	-	-			0.000	0.000	0.000	0.010	-	10	0.000	0.000	0.000	0.083	-	-					0.080	
8.400	0.000	0.000	0.000	1.40	-	39	0.000	0.000	0.000		1.54	-	-			0.000	0.000	0.000	0.031	-	5	0.000	0.000	0.000	0.150	-	-					0.084	
8.800	1.10	1.10	1.10	1.10	1.10	100	304	0.000	0.000	0.000		1.24	-	-			0.000	0.000	0.000	0.083	-	2	0.000	0.000	0.000	0.249	-	-					0.088
9.200	0.000	0.000	0.000	0.744	-	-	0.000	0.000	0.000		0.974	-	-			0.000	0.000	0.000	0.174	-	-	0.000	0.000	0.000	0.386	-	-					0.092	
9.600	0.670	0.670	0.670	0.670	0.670	4	15	0.000	0.000	0.000		0.751	-	-			0.000	0.000	0.000	0.328	-	-	0.000	0.000	0.000	0.563	-	-					0.096
10.000	0.000	0.000	0.000	0.310	-	11	0.000	0.000	0.000		0.566	-	-			0.000	0.000	0.000	0.540	-	-	0.000	0.000	0.000	0.778	-	-					0.100	
11.000	0.000	0.000	0.000	0.069	-	-	0.000	0.000	0.000		0.255	-	-			0.000	0.000	0.000	1.30	-	-	0.000	0.000	0.000	1.47	-	-					0.110	
12.000	0.000	0.000	0.000	0.010	-	-	0.000	0.000	0.000		0.101	-	-			0.000	0.000	0.000	2.24	-	-	0.000	0.000	0.000	2.32	-	-					0.120	
13.000	0.000	0.000	0.000	0.001	-	-	0.000	0.000	0.000		0.034	-	-			0.000	0.000	0.000	3.24	-	-	0.000	0.000	0.000	3.25	-	-					0.130	
14.000	0.000	0.000	0.000	0.001	-	-	0.000	0.000	0.000		0.012	-	-			0.000	0.000	0.000	4.24	-	-	0.000	0.000	0.000	4.24	-	-					0.140	
Totals:					104	430						0	0	0	0	104	20						0	0	0	0							
Number of Trades:					4						0	0	0	0	0.00								0	0	0	0							

Lending Products	Underlying Title	Open Interest[5]	Multilateral Transactions[1]				Bilateral Transactions[2]		Stock Borrowing through OTC (volume)[3]
			Volume(Offered)	Average Weighted	Transactions volume	Average Weighted	Transactions Volume	Average Weighted	Transactions Volume
ADMIEBOR	ADMIE (IPTO) HOLDING S.A. (CR)	12,000	---	---	---	---	---	389,153	
AEGNBOR	AEGEAN AIRLINES (CR)	---	---	---	---	---	---	24,094	
ALPHABOR	ALPHA SERVICES HOLD (CR)	200	---	---	---	---	---	58,538,708	
ALMYBOR	ALUMIL (CR)	---	---	---	---	---	---	---	
OTOELBOR	AUTOHELLAS SA (CR)	9,210	---	---	---	---	---	59,557	
AVAXBOR	AVAX S.A. (CR)	---	---	---	---	---	---	---	
EEEBOR	CC HBC AG (CR)	6,481	---	---	---	---	---	47,768	
CENERBOR	CENERGY HOLDINGS (CB)	---	---	---	---	---	---	---	
ELLAKTORBOR	ELLAKTOR (CR)	2,960	---	---	---	---	---	17,176	
ELHABOR	ELVALHALCOR (CR)	24,639	---	---	---	---	---	64,887	
EUROBBOR	EUROBANK HOLDINGS (CR)	60,744	---	---	---	---	---	34,112,689	
EYDAPBOR	EYDAP S.A. (CR)	18,351	---	---	---	---	---	183,204	
FFGRPBOR	FOLLI FOLLIE (CR)	---	---	---	---	---	---	886,310	
FOYRKBOR	FOURLIS (CR)	1	---	---	1	7,601	10.00%	15,104	
GEKTERNABOR	GEK TERNA (CR)	---	---	---	---	---	---	1,293	
SARBOR	GR. SARANTIS S.A. (CR)	559	---	---	---	---	---	62,310	
EXAEBOR	HELLENIC EXCHANGES-A.S.E. (CR)	5,700	---	---	---	---	---	199,347	
ELPEBOR	HELLENIQ ENERGY (CR)	---	---	---	---	---	---	382,471	
INTRKBOR	INTRACOM HOLDINGS (CR)	---	---	---	---	---	---	---	
INKATBOR	INTRAKAT (CR)	---	---	---	---	---	---	---	
BELABOR	JUMBO SA (CR)	36,404	---	---	---	---	---	230,275	
LAMDABOR	LAMDA DEVELOPMENT SA (CR)	---	---	---	---	---	---	502,869	
MIGBOR	MIG (CR)	1,938	---	---	---	---	---	40,179	
MOHBOR	MOTOR OIL (CR)	24,514	---	---	---	---	---	870,406	
MYTILBOR	MYTILINEOS (CR)	25,750	---	---	---	---	---	119,249	
ETEBOR	NATIONAL BANK (CR)	1,500	---	---	---	---	---	10,344,955	
OPAPBOR	OPAP (CR)	2,000	---	---	---	---	---	1,430,101	
HTOBOR	OTE (CR)	---	---	---	---	---	---	1,012,866	
PPABOR	P.P.A. S.A. (CR)	3,250	---	---	---	---	---	65,287	
TPEIRBOR	PIRAEUS FINANCIAL HOLD (CR)	33,006	---	---	2,760	7.37%	---	791,208	
PPCBOR	PPC (CR)	3,000	---	---	---	---	---	1,636,327	

## Stock Lending Notes

[1] - Multilateral contracts Lending or Borrowing as per Methods 8-1, 8-2 and 8-3-3 (According to ATHEX BoD Resolution No.17)

[2] - Bilateral Contracts Lending or Borrowing as per Methods 8-3-1 and 8-3-2 (According to ATHEX BoD Resolution No.20 )

[3] - The information concerning OTC Stock Borrowing Transactions is based on the statements of the Dematerialised Securities System (DSS) operators involved and refers to volumes that have been registered up until the previous working day.

[4] - Average Price (Volume weighted)

[5] - The Data concerning Open Interest before the start of trading session



Lending Products	Underlying Title	Open Interest[5]	Multilateral Transactions[1]				Bilateral Transactions[2]		Stock Borrowing through OTC (volume)[3]	
			Volume(Offered)	Average Weighted	Transactions volume	Average Weighted	Transactions Volume	Average Weighted	Transactions Volume	
QUALBOR	QUALITY & RELIABILITY SA (CR)	---	---	---	---	---	---	---	---	
QUESTBOR	QUEST HOLDINGS (CR)	8,708	---	---	---	---	---	---	58,355	
TENERGYBOR	TERNA ENERGY (CR)	---	---	---	---	---	---	---	111,027	
TITCBOR	TITAN CEMENT (CB)	5,900	---	---	2,832	4.50%	---	---	417,548	
VIOBOR	VIOHALCO SA/NV (CB)	18,177	---	---	---	---	---	---	---	

## Stock Lending Notes

[1] - Multilateral contracts Lending or Borrowing as per Methods 8-1, 8-2 and 8-3-3 (According to ATHEX BoD Resolution No.17)

[2] - Bilateral Contracts Lending or Borrowing as per Methods 8-3-1 and 8-3-2 (According to ATHEX BoD Resolution No.20 )

[3] - The information concerning OTC Stock Borrowing Transactions is based on the statements of the Dematerialised Securities System (DSS) operators involved and refers to volumes that have been registered up until the previous working day.

[4] - Average Price (Volume weighted)

[5] - The Data concerning Open Interest before the start of trading session

## Sectors codification for listed companies

12003-	ETF	10101010	Computer Services
10101015	Software	10102030	Computer Hardware
15101010	Telecommunications Equipment	15102015	Telecommunications Services
20101010	Health Care Facilities	20101025	Health Care Services
20102010	Medical Equipment	20103015	Pharmaceuticals
30101010	Banks	30202000	Diversified Financial Services
30202010	Asset Managers & Custodians	30202015	Investment Services
30204000	Closed End Investments	30302010	Full Line Insurance
30302015	Insurance Brokers	30302025	Property and Casualty Insurance
35101010	Real Estate Holding and Development	35101015	Real Estate Services
35102000	Diversified REITs	35102030	Office REITs
40201040	Rental & Leasing Services: Consumer	40202010	Home Construction
40202015	Household Furnishings	40202020	Household Appliance
40203040	Electronic Entertainment	40203045	Toys
40204020	Clothing & Accessories	40301010	Entertainment
40301030	Publishing	40301035	Radio & TV Broadcasters
40401010	Diversified Retailers	40401020	Apparel Retailers
40401025	Home Improvement Retailers	40401030	Specialty Retailers
40501010	Airlines	40501015	Travel & Tourism
40501020	Casinos & Gambling	40501025	Hotels & Motels
45101015	Distillers & Vintners	45101020	Soft Drinks
45102010	Farming Fishing Ranching & Plantations	45102020	Food Products
45103010	Tobacco	45201010	Food Retailers & Wholesalers
45201020	Personal Products	50101010	Construction
50101020	Building Roof/Wallboard and Plumbing	50101030	Cement
50101035	Building Materials: Other	50202010	Electrical Components
50203000	Diversified Industrials	50203015	Plastics
50203030	Containers & Packaging	50204000	Machinery: Industrial
50204020	Machinery: Construction & Handling	50205010	Industrial Suppliers
50205020	Back Office Support HR & Consulting	50205030	Forms & Bulk Printing Services
50206015	Commercial Vehicles & Parts	50206030	Marine Transportation
50206060	Transportation Services	55101000	Diversified Materials
55101020	Textile Products	55102000	General Mining
55102010	Iron & Steel	55102015	Metal Fabricating
55102035	Aluminum	60101020	Oil Refining and Marketing
65101010	Alternative Electricity	65101015	Conventional Electricity
65102030	Water		



**ATHEX**  
Athens Stock Exchange

Λεωφ. Αθηνών 110 104 42 Αθήνα  
110, Athinon Ave. GR 104 42 Athens  
tel. (+30)210-33.66.800, fax (+30)210-33.66.101  
[www.athexgroup.gr](http://www.athexgroup.gr)