

23

Ημερήσιο Δελτίο
Συναλλακτικής Δραστηριότητας

Daily Official List
of Trading Activity

Monday, 27 March, 2023

Year: 144 Trading Day No: 59



ATHEXGROUP
Athens Exchange Group

Disclaimer:

Hellenic Exchanges-Athens Stock Exchange S.A. endeavours to ensure that the data and other material ("Information") presented on the Daily Official List are accurate and complete, but it is not liable for any errors or omissions of data or /and for the accuracy, credibility, updating and completeness of the aforesaid information nor it has any liability arising directly or indirectly from the use of the above Information.

The Company is not liable for the accuracy of the data included in listed companies' announcements. Only the sender of such an announcement is fully and solely liable for any infringement of third party's rights from the content of such announcement. All contents of the Daily Official List are provided only for information purposes and do not constitute investment advice or solicitation to invest in securities or other products listed for trading on the Exchange.

You acknowledge and agree that the Company is the owner of any property rights related to any Information appearing on the Daily Official List including intellectual property rights copyright, trademarks, etc.

The above data are a property of the Hellenic Exchanges-Athens Exchange and are copyright protected. Users are forbidden to reproduce, modify, copy, sale, transmit or redistribute, by all reproduction means and methods, part or the whole of the above data, without reference to their source.

The commercial exploitation of these data is, also, forbidden by third parties. Hellenic Exchanges-Athens Exchange does not carry any responsibility, direct or indirect, derived from usage or accidental alteration of the above data when used by third parties.

Hellenic Exchanges – Athens Stock Exchange S.A.

110 Athinon Ave., 10442 Athens, Tel: (210) 33.66.800, Fax: (210) 32.13.938

www.athexgroup.gr

Thessalonica Stock Exchange Center (T.S.E.C)

16-18 Katouni Str., Thessalonica 546 25 Tel: (2310) 567.667, Fax: (2310) 530.545

Athex Members Guarantee Fund

14-16 Fidiou Str., Athens 106 78, Tel: (210) 33.04.682, Fax: (210) 33.04.155

Hellenic Republic Capital Market Commission

1 Kolokotroni Str. & 1 Stadiou Str., Athens 10562 Tel: (210) 33.77.100 Fax: (210) 33.77.173

Table of Contents

Section 1: Statistical Figures of Securities, Derivatives and Lending

Summary of Markets

Athex Indices

Analytic Figures for Athex Market's Boards and Categories

Trading Details by Athex Sectors and Financial Instruments (ETFs)

Top 10 best & worst performing Shares

Derivatives Summary

Section 2: Analytic Figures of Shares Transactions

Analytic Figures of Shares Transactions

Shares' Notes

Section 3: Figures of Securities Transactions

Securities Blocks Details

Shares Rights Details

Stock Borrowing

Forced Sales Details

Forced Sales Registered Shares

Exchange Traded Funds (ETFs) Characteristics

Section 5: Bonds traded in Fixed Income Assets Market

Convertible Corporate Bonds - Regulated Market

Non Convertible Corporate Bonds - Regulated Market

Government Bonds

Treasury Bills & Zero Coupon Government Bonds

Government Bonds Traded with the Open Outcry Method

State Banks Bonds

Section 6: Additional Infos

Athex & ATHEXClear Members List

List of Stocks under Market Making operations

Section 7: Derivatives Market Analytic Figures

Index Futures

Stock Futures

Index Options

Stock Options

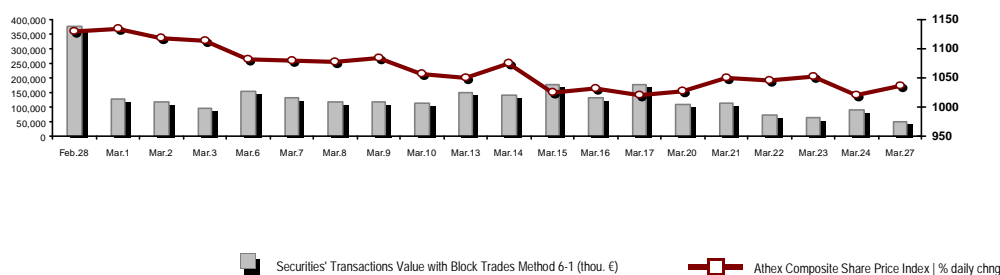
Stock Lending Analytic Figures

Appendix A: Sectors codification for listed companies

Section codification follows the corresponding from the Greek version of Daily Official List for reference purposes.

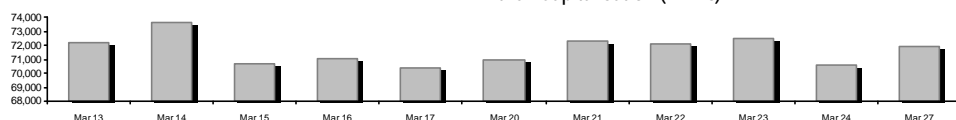
Summary of Markets

Athex Composite Share Price Index vs Shares and Derivatives Transactions Value

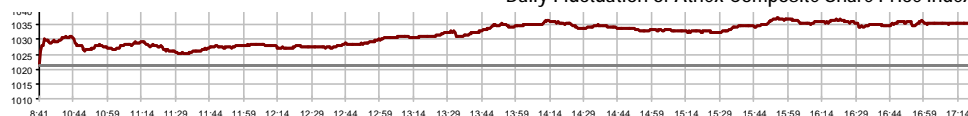


Athex Capitalisation (mill. €) **: 71,906.79	Derivatives Total Open Interest: 347,844
Daily change: mill. € % 1,318.74 1.87%	in Index Futures % daily chng 5,780 10.10%
Yearly Avg Capitalisation: mill. € % chng prev year Avg 71,733.70 13.75%	in Stock Futures % daily chng 340,083 2.12%
Athex Composite Share Price Index % daily chng 1,035.72 1.43%	in Index Options % daily chng 952 7.45%
Athex Composite Share Price Index Capitalisation (mill. €) 64,409.22	in Stock Options % daily chng 1,029 1.98%
Daily change (mill. €) 851.91	
Securities' Transactions Value with Block Trades Method 6-1 (t 48,071.88	Derivatives Contracts Volume: 18,852
Daily change: % -44,737.91 -48.20%	Daily change: pieces % -47,839 -71.73%
YtD Avg Trans. Value: thou. € % chng prev year Avg 113,365.90 56.91%	YtD Avg Derivatives Contracts % chng prev year Avg 54,789 59.50%
Blocks Transactions Value of Method 6-1 (thou. €) 2,701.38	Derivatives Trades Number: 1,304
Blocks Transactions Value of Method 6-2 & 6-3 (thou. €) 0.00	Daily change: number % -1,720 -56.88%
Bonds Transactions Value (thou.€) 717.18	YtD Avg Trades number % chng prev year Avg 2,721 32.47%
Securities' Transactions Volume with Block Trades Method 6-1 (tho 16,747.14	Lending Total Open Interest: 508,613
Daily change: thou. pieces % -19,600.25 -53.92%	Daily change: pieces % -53,650 -9.54%
YtD Avg Volume: % chng prev year Avg 45,757.60 61.40%	Lending Volume (Multilateral/Bilateral) 28,710
Blocks Transactions Volume of Method 6-1 (thou. Pieces) 1,658.25	Daily change: pieces % 27,210
Blocks Transactions Volume of Method 6-2 & 6-3 (thou. Pieces) 0.00	Multilateral Lending 19,210
Bonds Transactions Volume 771,000	Bilateral Lending 9,500
Securities' Trades Number with Block Trades Method 6-1 22,178	Lending Trades Number: 36
Daily change: number % -18,776 -45.85%	Daily change: % 34
YtD Avg Trades number % chng prev year Avg 39,494 34.25%	Multilateral Lending Trades Number 32
Number of Blocks Method 6-1 5	Bilateral Lending Trades Number 4
Number of Blocks Method 6-2 & 6-3 0	
Number of Bonds Transactions 192	

Athex Capitalisation (mill. €) **



Daily Fluctuation of Athex Composite Share Price Index



Athex Indices

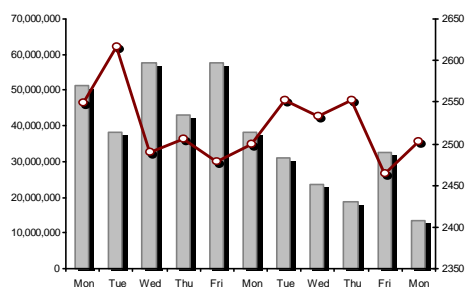
Index name	27/03/2023	24/03/2023	pts.	%	Min	Max	Year min	Year max	Year change
Athex Composite Share Price Index	1,035.72 #	1,021.16	14.56	1.43%	1,021.16	1,037.22	929.79	1,140.96	11.39% #
Athex ESG Index	1,176.30 #	1,158.90	17.40	1.50%	1,158.90	1,178.74	1,057.52	1,311.72	11.22% #
FTSE/Athex Large Cap	2,503.00 #	2,464.63	38.37	1.56%	2,464.63	2,508.95	2,250.77	2,795.71	11.17% #
FTSE/Athex Mid Cap Index	1,524.84 #	1,514.21	10.63	0.70%	1,513.44	1,525.50	1,411.43	1,660.73	8.04% #
FTSE/ATHEX High Dividend Yield Index	3,281.76 #	3,245.58	36.18	1.11%	3,245.58	3,289.42	3,028.28	3,547.10	8.37% #
FTSE/ATHEX Global Traders Index Plus	2,952.63 #	2,905.46	47.17	1.62%	2,905.46	2,953.32	2,616.09	3,117.64	12.86% #
FTSE/ATHEX Mid & Small Cap Factor-Weighted Ind	4,801.47 #	4,762.60	38.87	0.82%	4,759.82	4,801.47	4,353.12	4,965.04	9.23% #
ATHEX Select Index Plus	3,442.84 #	3,399.42	43.42	1.28%	3,399.42	3,445.24	3,071.06	3,706.63	12.11% #
ATHEX Select Index	5,463.90 #	5,439.33	24.57	0.45%	5,439.33	5,473.90	4,343.88	6,091.85	25.78% #
FTSE/Athex Market Index	599.80 #	590.95	8.85	1.50%	590.95	600.75	539.21	662.70	11.21% #
Athex Composite Index Total Return Index	1,836.19 #	1,810.37	25.82	1.43%	1,810.37	1,838.85	1,641.17	2,015.89	11.88% #
FTSE/Athex Large Cap Total Return	4,022.54 #	3,960.88	61.66	1.56%			3,623.42	4,431.63	11.71% #
FTSE/Athex Mid Cap Total Return	2,008.42 #	1,994.42	14.00	0.70%			1,881.61	2,180.39	8.12% #
Hellenic Mid & Small Cap Index	1,498.16 #	1,481.25	16.91	1.14%	1,481.25	1,500.14	1,365.14	1,599.85	9.74% #
FTSE/Athex Banks	755.28 #	736.22	19.06	2.59%	736.22	757.51	640.09	954.15	17.91% #
FTSE/Athex Insurance	2,782.19 #	2,766.91	15.28	0.55%	2,766.91	2,812.77	2,675.19	3,042.07	-5.21% €
FTSE/Athex Financial Services	1,201.27 ~	1,201.27	0.00	0.00%	1,190.13	1,212.40	672.72	1,375.02	75.26% #
FTSE/Athex Industrial Goods & Services	5,694.95 #	5,593.39	101.56	1.82%	5,593.39	5,696.70	4,603.86	5,816.79	22.78% #
FTSE/Athex Retail	1,018.64 #	1,007.44	11.20	1.11%	1,002.81	1,019.15	901.21	1,129.08	13.03% #
FTSE/ATHEX Real Estate	3,824.85 €	3,845.21	-20.36	-0.53%	3,817.73	3,867.95	3,817.73	4,461.05	-6.09% €
FTSE/Athex Consumer Goods & Services	10,962.45 #	10,674.68	287.77	2.70%	10,629.33	11,026.76	8,974.47	12,337.62	19.71% #
FTSE/Athex Food & Beverage	9,403.27 #	9,254.52	148.75	1.61%	9,254.52	9,414.37	8,101.49	9,414.37	11.07% #
FTSE/Athex Basic Resources	6,677.72 #	6,603.89	73.83	1.12%	6,603.89	6,719.72	6,463.31	7,812.43	2.90% #
FTSE/Athex Construction & Materials	3,557.08 #	3,494.67	62.41	1.79%	3,494.34	3,563.46	3,204.90	3,846.65	10.99% #
FTSE/Athex Energy	5,062.61 #	5,023.86	38.75	0.77%	5,021.89	5,123.90	4,780.16	5,856.79	0.65% #
FTSE/Athex Travel & Leisure	2,522.92 #	2,483.67	39.25	1.58%	2,483.67	2,533.75	2,196.17	2,610.07	13.78% #
FTSE/Athex Technology	2,193.16 #	2,165.41	27.75	1.28%	2,165.41	2,193.16	2,047.81	2,279.06	6.76% #
FTSE/Athex Telecommunications	3,655.04 €	3,657.52	-2.48	-0.07%	3,640.84	3,707.55	3,511.53	4,391.80	-10.23% €
FTSE/Athex Utilities	4,840.63 €	4,871.15	-30.52	-0.63%	4,840.63	4,919.94	4,598.77	5,289.37	5.26% #
FTSE/Athex Health Care	438.14 #	416.63	21.51	5.16%	416.63	439.27	390.59	469.84	4.60% #
FTSE/Athex Personal Products	6,584.04 #	6,510.48	73.56	1.13%	6,510.48	6,710.74	6,510.48	7,905.24	-0.34% €
Athex All Share Index	250.64 #	247.56	3.08	1.24%	250.64	250.64	231.11	271.62	8.86% #
Hellenic Corporate Bond Index	120.08 €	120.22	-0.14	-0.12%			118.78	121.26	0.92% #
Hellenic Corporate Bond Price Index	86.29 €	86.40	-0.11	-0.13%			86.05	87.55	0.07% #

Note 1: FTSE/Med 100, Hellenic Corporate Bond Price Index and Hellenic Corporate Bond Index closing prices refer to the previous trading day of 23/03/2023.

Note 2: The Hellenic Mid & Small Cap Index is a Customized index calculated by the Athens Exchange.

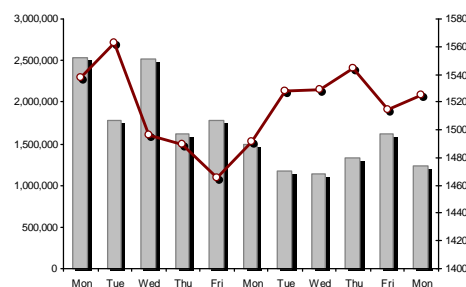
Athex Indices

FTSE/Large Cap

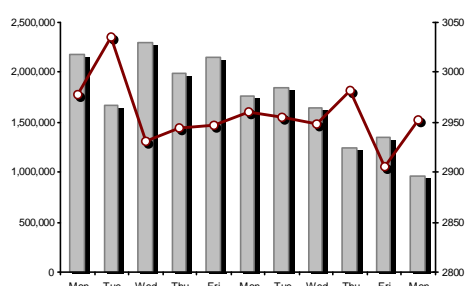


27/03/2023: 1.56% FTSE/Athex Mid Cap Index

27/03/2023: 0.70%

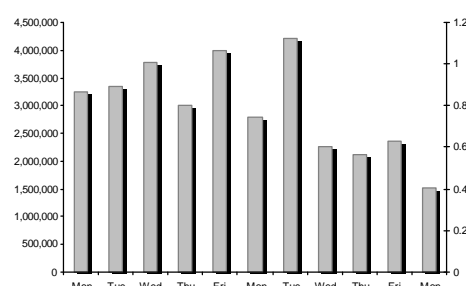


FTSE/ATHEX Global Traders Index Plus



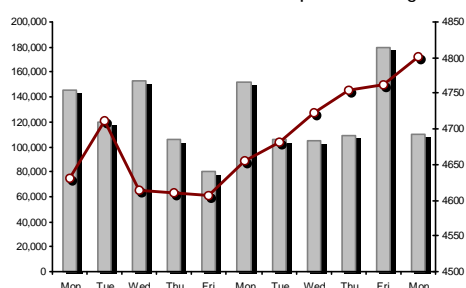
27/03/2023: 1.62% FTSE/ATHEX Global Traders Index

:



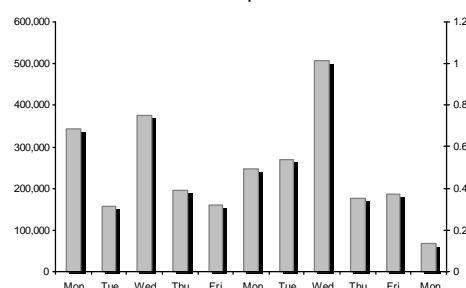
FTSE/ATHEX Mid & Small Cap Factor-Weighted Index

27/03/2023: 0.82%



ATHEX Mid & SmallCap Price Index

:



Indices volume of transactions

Indices closing prices

Analytic Figures for Athex Market's Boards and Categories

	Total Traded Securities	Main Market	Surveillance	Exchange Traded Funds (ETFs)
Totals	115	101	13	1
Gain / Lose / Same:	63 / 33 / 19	59 / 30 / 12	3 / 3 / 7	1 / 0 / 0
Athex Capitalisation (mill. €) **	71,906.79	71,523.14	383.66	
Daily Average Trans/ons Value(thou.€)	113,365.90	113,056.24	334.51	37.72
Transactions Value	48,071.88	47,987.94	83.17	0.77
Main Board:	45,370.50	45,286.56	83.17	0.77
Blocks Board 6_2_3:	2,701.38	2,701.38	0.00	0.00
Forced Sales Board:	0.00	0.00	0.00	0.00
Special Terms Board:	0.00	0.00	0.00	0.00
Daily Average Transactions Volume	45,757,605	44,289,015	1,478,490	1,507
Transactions Volume	16,747,140	16,109,308	637,801	31
Main Board:	15,088,890	14,451,058	637,801	31
Blocks Board 6_2_3:	1,658,250	1,658,250	0	0
Forced Sales Board:	0	0	0	0
Special Terms Board:	0	0	0	0
Daily Average Number of Trades	39,494	39,190	300	4
Number of Trades	22,178	22,026	150	2
Main Board:	22,173	22,021	150	2
Blocks Board 6_2_3:	5	5	0	0
Forced Sales Board:	0	0	0	0
Special Terms Board:	0	0	0	0

Trading Details by Athex Sectors and Financial Instruments (ETFs)

Code	Sectors	Gain / Lose / Same	Number of Trades	Transactions Volume	Transactions Value	% of Total Trans. Value
3010	- Banks	6 / 0 / 0	8,728	11,553,957	20,713,617.84	43.09%
5510	- Basic Resources	7 / 4 / 1	819	272,298	708,416.39	1.47%
5010	- Construction & Materials	7 / 4 / 2	1,531	894,311	1,902,265.03	3.96%
4020	- Consumer Products & Services	3 / 2 / 2	1,294	192,264	3,154,418.17	6.56%
6010	- Energy	3 / 1 / 0	1,506	191,208	3,093,765.16	6.44%
12000	- Financial Instruments	1 / 0 / 0	2	31	769.19	0.00%
3020	- Financial Services	2 / 1 / 2	332	1,020,090	514,679.66	1.07%
4510	- Food Beverage & Tobacco	3 / 1 / 2	173	25,803	580,969.57	1.21%
2010	- Health Care	2 / 1 / 0	53	21,218	12,119.28	0.03%
5020	- Industrial Goods & Services	8 / 2 / 2	1,805	863,076	4,505,543.34	9.37%
3030	- Insurance	1 / 0 / 0	6	305	1,108.40	0.00%
4030	- Media	0 / 1 / 2	32	31,929	16,592.81	0.03%
4520	- Personal Care, Drug & Grocery Stores	1 / 1 / 1	133	26,400	102,023.51	0.21%
3510	- Real Estate	2 / 5 / 2	517	142,171	498,664.97	1.04%
4040	- Retail	4 / 1 / 2	208	94,887	322,438.22	0.67%
1010	- Technology	7 / 3 / 0	476	163,384	629,408.32	1.31%
1510	- Telecommunications	1 / 1 / 0	1,264	280,499	3,668,791.98	7.63%
4050	- Travel & Leisure	5 / 1 / 0	1,206	299,269	2,813,895.80	5.85%
6510	- Utilities	0 / 4 / 1	2,093	674,040	4,832,392.20	10.05%

Top 10 best & worst performing Shares

Main Market					
With positive Price change	Closing price	change	With negative Price change	Closing price	change
ATTICA BANK S.A. (CR)	13.24	3.93% #	ALUMIL (CR)	2.12	-1.85% €
AEGEAN AIRLINES (CR)	7.32	3.83% #	THESSALONIKA WATER & SEWERAGE	3.34	-1.77% €
INTRAKAT (CR)	1.63	3.82% #	AVE (CR)	0.522	-1.51% €
PIRAEUS FINANCIAL HOLD (CR)	1.95	3.72% #	EKTER SA (CR)	1.4	-1.41% €
EUROBANK HOLDINGS (CR)	1.225	2.94% #	PPC (CR)	7.68	-1.03% €
JUMBO SA (CR)	19.2	2.84% #	AUSTRIACARD (CB)	11.88	-1.00% €
TPA SA (CR)	26	2.77% #	LAMDA DEVELOPMENT SA (CR)	5.605	-0.80% €
ALPHA SERVICES HOLD (CR)	1.12	2.75% #	MPLK KEDROS (CR)	2.25	-0.44% €
PREMIA (CR)	1.125	2.74% #	ATTICA HOLDINGS (CR)	2.39	-0.42% €
ELVALHALCOR (CR)	1.59	2.58% #	AVAX S.A. (CR)	0.77	-0.26% €
With the highest Transactions Value	Value (thou. €)	change	With the highest Transactions Volume	Volume	change
NATIONAL BANK (CR)	8,006.29	1.38% #	EUROBANK HOLDINGS (CR)	4,896,901	2.94% #
EUROBANK HOLDINGS (CR)	5,928.26	2.94% #	ALPHA SERVICES HOLD (CR)	3,252,241	2.75% #
MYTILINEOS (CR)	3,768.16	1.95% #	NATIONAL BANK (CR)	1,820,196	1.38% #
OTE (CR)	3,663.05	-0.08% €	PIRAEUS FINANCIAL HOLD (CR)	1,576,658	3.72% #
ALPHA SERVICES HOLD (CR)	3,634.70	2.75% #	MIG (CR)	943,799	0.00% -
PIRAEUS FINANCIAL HOLD (CR)	3,034.29	3.72% #	INTRAKAT (CR)	474,749	3.82% #
PPC (CR)	2,870.09	-1.03% €	PPC (CR)	371,067	-1.03% €
JUMBO SA (CR)	2,762.94	2.84% #	OTE (CR)	279,590	-0.08% €
MOTOR OIL (CR)	2,568.22	1.09% #	ADMIE (IPTO) HOLDING S.A. (CR)	192,345	-0.23% €
OPAP (CR)	2,330.26	1.37% #	ELLAKTOR (CR)	160,672	-0.24% €

Note: Stocks that are not included in the "Under Supervision" category, and the transactions value is more than 10,000 €.

Derivatives Summary

	Number of Trades	Volume	Open Interest
Index Futures	261	851	5,780
FTSE/Athex Banks	4	35	852
FTSE/Athex Large Cap	257	816	4,928
Stock Futures	1,037	17,975	340,083
ADMIE (IPTO) HOLDING S.A. (CR)	3	26	13,176
AEGEAN AIRLINES (CR)	7	22	93
ALPHA SERVICES HOLD (CR)	215	7,444	120,256
AUTOHELLAS SA (CR)	2	6	127
AVAX S.A. (CR)	0	0	305
CC HBC AG (CR)	5	54	570
CENERGY HOLDINGS (CB)	4	11	6,226
ELLAKTOR (CR)	2	15	1,262
ELVALHALCOR (CR)	2	5	1,287
EUROBANK HOLDINGS (CR)	88	1,587	23,795
EYDAP S.A. (CR)	1	2	543
FOURLIS (CR)	1	1	1,495
GEK TERNA (CR)	4	22	7,585
HELLENIC EXCHANGES-A.S.E. (CR)	2	2	1,889
HELLENIQ ENERGY (CR)	4	18	1,475
INTRACOM HOLDINGS (CR)	0	0	4,198
INTRAKAT (CR)	39	379	6,199
JUMBO SA (CR)	8	17	326
LAMDA DEVELOPMENT SA (CR)	9	14	5,255
MIG (CR)	1	50	1,240
MOTOR OIL (CR)	18	43	322
MYTILINEOS (CR)	32	116	2,140
NATIONAL BANK (CR)	180	1,685	20,853
OPAP (CR)	0	0	1,870
OTE (CR)	41	245	10,987
P.P.A. S.A. (CR)	0	0	433
PIRAEUS FINANCIAL HOLD (CR)	254	5,471	65,670
PPC (CR)	90	377	26,198
QUEST HOLDINGS (CR)	2	10	167
TERNA ENERGY (CR)	17	345	8,182
TITAN CEMENT (CB)	1	2	730
VIOHALCO SA/NV (CB)	5	6	5,229
Index Options	6	26	952
FTSE/Athex Large Cap	6	26	952
Stock Options	0	0	1,029
ALPHA SERVICES HOLD (CR)	0	0	3
NATIONAL BANK (CR)	0	0	272
OPAP (CR)	0	0	21
OTE (CR)	0	0	78
PIRAEUS FINANCIAL HOLD (CR)	0	0	322
PPC (CR)	0	0	333
Total Derivatives Traded	1,304	18,852	347,844

Number of Outstanding Securities	Nominal Value	Dividends [1]			Date of Last Coupon Dividend [2]		Date of Right	Note	Shares	Closing price	% change	Previous closing price/date		Open price	Price min	Price max	Last price	Avg price	Last Bid [7]		Last Ask [7]		P/E after tax	Year	Volume	Trades	Transactions Value[8]	Company Mkt Value (thou. €)	Year low	Year high	Sector[4]
----------------------------------	---------------	---------------	--	--	----------------------------------	--	---------------	------	--------	---------------	----------	-----------------------------	--	------------	-----------	-----------	------------	-----------	--------------	--	--------------	--	---------------	------	--------	--------	-----------------------	-----------------------------	----------	-----------	------------

Main Market - High Liquidity Class

2,348,908,567	0.290	---	---	---	07/04/2008	18/04/2017	---	ALPHA SERVICES HOLD (CR)	1.12	2.75	P	1.09	24/03/2023	1.12	1.1	1.13	1.12	1.118	6881@1.12	13230@1.12	---	---	---	---	3,252,241	1,799	3,634,699.31	2,630,777.60	1.0015	1.513	30101010
18,176,934	1.00	---	---	---		27/01/2023	---	AUSTRIACARD (CB)	11.88	-1.00	E	12	24/03/2023	12	11.7	12	11.88	11.827	862@11.70	521@11.88	---	---	---	---	18,009	88	212,996.59	215,941.98	11.7	13.42	10101010
48,624,764	0.080	0.23	0.46	---	08/04/2022	05/12/2022	---	AUTOHELLAS SA (CR)	12.22	2.00	P	11.98	24/03/2023	12.12	11.94	12.24	12.22	12.17	1@12.12	105@12.26	---	---	---	---	31,434	204	382,546.78	594,194.62	10.06	12.56	40201040
190,162,681		---	---	---		07/12/2016	---	CENERGY HOLDINGS (CB)	3.77	0.94	P	3.735	24/03/2023	3.745	3.745	3.78	3.77	3.765	1000@3.76	8293@3.77	---	---	---	---	98,737	296	371,710.14	716,913.31	3.015	4.18	50202010
372,086,095	6.70	0.64	0.71	---	07/07/2022	29/04/2013	---	CC HBC AG (CR)	25.12	1.62	P	24.72	24/03/2023	24.72	24.72	25.17	25.12	24.973	200@25.05	16@25.13	---	---	---	---	19,443	134	485,549.09	9,346,802.71	21.54	25.17	45101020
3,710,677,508	0.220	---	---	---	02/05/2008	20/05/2019	---	EUROBANK HOLDINGS (CR)	1.225	2.94	P	1.19	24/03/2023	1.2	1.185	1.237	1.225	1.211	8250@1.22	5240@1.23	---	---	---	---	4,896,901	2,252	5,928,264.58	4,545,579.95	1.0495	1.4935	30101010
52,131,944	1.00	---	0.1102	---	30/06/2022	23/07/2019	---	FOURLIS (CR)	3.54	1.14	P	3.5	24/03/2023	3.545	3.475	3.55	3.54	3.513	3400@3.50	531@3.54	---	---	---	---	70,983	132	249,391.29	184,547.08	3.26	3.99	40401010
305,635,185	2.18	0.1	0.1	0.3	11/01/2023	01/10/2003	---	HELLENIQ ENERGY (CR)	7.27	-0.14	E	7.28	24/03/2023	7.35	7.23	7.42	7.27	7.324	550@7.27	785@7.28	---	---	---	---	70,570	451	516,867.59	2,221,967.79	6.93	8.68	60101020
136,059,759	0.880	0.77	0.77	---	21/03/2023	05/03/2014	---	JUMBO SA (CR)	19.2	2.84	P	18.67	24/03/2023	18.58	18.58	19.33	19.2	19.122	1243@19.19	218@19.21	---	---	---	---	144,493	1,042	2,762,939.09	2,612,347.37	15.61	22.06	40203045
176,736,715	0.300	---	---	---	30/05/2007	27/11/2019	---	LAMDA DEVELOPMENT SA (CR)	5.605	-0.80	E	5.65	24/03/2023	5.69	5.6	5.69	5.605	5.639	6286@5.60	5@5.63	---	---	---	---	60,046	313	338,572.62	990,609.29	5.57	6.6	35101010
939,510,748	0.100	---	---	---	26/04/2007	29/08/2014	---	MIG (CR)	0.217	---	γ	0.217	24/03/2023	0.217	0.217	0.2175	0.217	0.2193454539@0.217	1390691@0.218	---	---	---	---	943,799	61	204,804.54	203,873.83	0.0329	0.28	30202000	
107,222,688	0.440	---	(0.5667)	---	17/06/2022	16/03/2022	---	QUEST HOLDINGS (CR)	5.03	1.72	P	4.945	24/03/2023	5.04	4.96	5.04	5.03	4.996	1000@4.94	478@5.03	---	---	---	---	22,765	75	113,744.96	539,330.12	4.655	5.46	10101010
78,325,475		---	---	---		23/07/2019	---	TITAN CEMENT (CB)	14.44	2.12	P	14.14	24/03/2023	14.2	14.2	14.5	14.44	14.403	198@14.38	20@14.44	---	---	---	---	25,259	306	363,811.82	1,131,019.86	12.04	16	50101030
259,189,761		0.02	0.1	---	03/06/2022	26/02/2016	---	VIOHALCO SA/NV (CB)	4.1	0.99	P	4.06	24/03/2023	4.1	4.07	4.14	4.1	4.098	50@4.08	7151@4.10	---	---	---	---	103,480	322	424,091.53	1,062,678.02	4.03	4.86	55102015
232,000,000	2.12	0.1069	0.0854	0.0682	29/08/2022	19/06/2017	---	ADMIE (IPTO) HOLDING S.A. (CR)	1.706	-0.23	E	1.71	24/03/2023	1.71	1.704	1.728	1.706	1.716	2200@1.70	2054@1.72	11.32	2021	---	---	192,345	436	330,065.00	395,792.00	1.65	2.035	65101015
90,167,100	0.500	---	---	---	03/06/2019	24/05/2021	---	AEGEAN AIRLINES (CR)	7.32	3.83	P	7.05	24/03/2023	7.05	7.03	7.37	7.32	7.173	250@7.17	966@7.29	---	---	---	---	59,439	286	426,374.67	660,023.17	5.27	7.64	40501010
103,423,291	0.570	---	---	---	01/08/2011	06/09/2022	---	GEK TERNA (CR)	11.22	2.00	P	11	24/03/2023	11	11	11.26	11.22	11.144	6@11.18	37@11.24	---	---	---	---	24,196	128	269,632.88	1,160,409.33	10.42	12.62	50101010
382,000,000	2.48	---	---	---	20/07/2015	12/12/2001	---	PPC (CR)	7.68	-1.03	E	7.76	24/03/2023	7.82	7.68	7.86	7.68	7.735	3546@7.68	1000@7.70	---	---	---	---	371,067	986	2,870,089.58	2,933,760.00	6.6	8.48	65101015
914,715,153	1.00	---	---	---	16/05/2008	29/08/2018	---	NATIONAL BANK (CR)	4.41	1.38	P	4.35	24/03/2023	4.41	4.356	4.45	4.41	4.399	3315@4.41	1339@4.42	---	---	---	---	1,820,196	3,439	8,006,294.88	4,033,893.82	3.746	5.528	30101010
375,241,586	0.390	0.01	0.03	---	30/05/2022	14/07/2006	---	ELVALHALCOR (CR)	1.59	2.58	P	1.55	24/03/2023	1.594	1.564	1.596	1.59	1.581	1500@1.57	13@1.59	---	---	---	---	85,204	217	134,724.73	596,634.12	1.52	1.894	55102015
348,192,005	0.040	---	---	---	05/07/2011	16/07/2021	---	ELLAKTOR (CR)	2.1	-0.24	E	2.105	24/03/2023	2.105	2.075	2.15	2.1	2.12	100@2.07	500@2.11	---	---	---	---	160,672	244	340,690.71	731,203.21	1.706	2.455	50101010
106,500,000	0.600	---	0.28	---	05/09/2022	13/09/2021	---	EYDAP S.A. (CR)	6.59	-0.15	E	6.6	24/03/2023	6.63	6.56	6.64	6.59	6.601	815@6.56	155@6.61	---	---	---	---	19,592	199	129,322.22	701,835.00	6.56	7.34	65102030
110,782,980	0.750	---	0.9054	0.4058	21/11/2022	04/11/2013	---	MOTOR OIL (CR)	22.36	1.09	P	22.12	24/03/2023	22.12	21.98	22.6	22.36	22.286	38@22.32	665@22.42	---	---	---	---	115,241	1,028	2,568,223.12	2,477,107.43	20.84	25.82	60101020
142,891,161	0.970	0.378	0.4341	---	24/06/2022	07/07/2017	---	MYTILINEOS (CR)	25.14	1.95	P	24.66	24/03/2023	25	24.66	25.16	25.14	24.975	17@25.02	2776@25.14	---	---	---	---	150,879	1,091	3,768,158.98	3,592,283.79	19.94	25.64	50203000
25,000,000	2.00	0.4	0.628	---	25/07/2022	08/08/2003	---	P.P.A. S.A. (CR)	19.14	0.42	P	19.06	24/03/2023	19.06	19.06	19.22	19.14	19.137	100@19.10	50@19.16	13.02	2021	---	---	3,298	66	63,114.96	478,500.00	15.86	19.36	50206060
363,341,859	0.300	0.55	0.6	0.3	19/10/2022	29/07/2022	---	OPAP (CR)	14.8	1.37	P	14.6	24/03/2023	14.7	14.67	14.87	14.8	14.785	1582@14.78	6788@14.80	---	---	---	---	157,610	851	2,330,257.02	5,377,459.51	13.02	15.34	40501020
433,664,596	2.83	0.6879	0.8231	---	01/07/2022	18/06/1998	---	OTE (CR)	13.08	-0.08	E	13.09	24/03/2023	13.27	13.03	13.27	13.08	13.102	1330@13.06	850@13.08	---	---	---	---	279,590	1,250	3,663,048.84	5,672,332.92	12.57	15.73	15102015
1,250,367,223	0.930	---	---	---	16/05/2008	14/04/2021	---	PIRAEUS FINANCIAL HOLD (CR)	1.95	3.72	P	1.88	24/03/2023	1.93	1.884	1.95	1.95	1.925	2312@1.94	12027@1.95	---	---	---	---	1,576,658	1,148	3,034,294.24	2,438,216.08	1.43	2.449	30101010
69,877,484	0.780	0.2239	0.1493	---	03/06/2022	13/06/2018	---	GR. SARANTIS S.A. (CR)	6.54	1.39	P	6.45	24/03/2023	6.47	6.47	6.67	6.54	6.63	474@6.54	200@6.66	---	---	---	---	14,627	116	96,973.28	456,998.75	6.45	8	45201020
115,855,090	0.300	0.3407	0.3411	---	04/07/2022	05/03/2020	---	TERNA ENERGY (CR)	18.4	---	γ	18.4	24/03/2023	18.4	18.32	18.64	18.4	18.447	900@18.40	52@18.57	---	---	---	---	79,339	454	1,463,587.41	2,131,733.66	17.89	21.04	65101010

Main Market - Medium Liquidity Class

13,126,020	0.660	0.0837	0.1163	---	22/06/2022	04/09/2020	---	AS COMPANY SA (CR)		2.2	1.85 P	2.16	24/03/2023	2.19	2.19	2.2	2.2	2.197	15@2.16	700@2.22	---	---	---	---	3,009	5	6,609.80	28,877.24	2.02	2.38	40401030
3,114,144	0.360	0.1558	0.3427	---	14/06/2022	02/06/2020	---	ALPHA TRUST (CR)		5.25	0.96 P	5.2	24/03/2023	5.25	5.15	5.25	5.25	5.152	170@5.00	200@5.15	---	---	---	---	2,050	23	10,561.50	16,349.26	4.32	5.35	30202010
215,805,843	0.300	0.05	---	---	30/12/2021	15/11/2022	---	ATTICA HOLDINGS (CR)		2.39	-0.42 E	2.4	24/03/2023	2.4	2.38	2.4	2.39	2.387	4338@2.38	8825@2.40	---	---	---	---	4,618	15	11,022.40	515,775.96	1.865	2.5	40501015
45,033,921	0.050	---	---	---	04/06/2008	27/03/2023	---	ATTICA BANK S.A. (CR)		13.24	3.93 P	12.74	24/03/2023	12.74	12.74	14	13.1	13.537	79@13.10	103@13.38	---	---	---	---	7,231	65	97,885.08	596,249.11	10.62	48.75	30101010
35,764,593	2.10	0.06	0.075	---	26/04/2022	25/11/2019	---	BRIQ PROPERTIES (CR)		1.945	-0.26 E	1.95	24/03/2023	1.945	1.945	1.96	1.96	1.947	1510@1.95	1800@1.98	---	---	---	---	7,426	14	14,461.25	69,562.13	1.9	2.11	35102030
101,123,806	0.360	---	---	---	22/07/2010	28/06/2011	---	CENTRIC HOLDINGS (CR)		0.285	1.42 P	0.281	24/03/2023	0.287	0.278	0.287	0.285	0.284	400@0.280	750@0.289	---	---	---	---	2,205	14	625.41	28,820.28	0.263	0.333	40203040

Daily Official List																											Year: 144 Trading Day No: 59			
Section 2: Analytic Figures of Shares Transactions																											Monday, 27 March, 2023			
Number of Outstanding Securities	Nominal Value	Dividends [1]			Date of Last Coupon Dividend [2]		Note	Shares	Closing price	% change	Previous closing price/date		Open price	Price min	Price max	Last price	Avg price	Last Bid [7]		Last Ask [7]		P/E after tax	Year	Volume	Trades	Transactions Value[8]	Company Mkt Value (thou. €)	Year low	Year high	Sector[4]
		2020	2021	2022																										
784,500	10.00	---	0.3	---	24/05/2022	31/07/2018	---	CNL CAPITAL (CR)	6.9	-2.13 €	7.05	24/03/2023	7	6.9	7	6.9	6.946	100@6.80	121@6.90	15.89	2021		225	3	1,562.75	5,413.05	6.9	8	30202010	
10,246,800	0.300	---	---	---	06/10/2005	13/02/2002	---	CPI SA (CR)	0.596	-0.33 €	0.598	24/03/2023	0.596	0.596	0.598	0.598	0.596	60@0.554	895@0.596	---	---		410	4	244.38	6,107.09	0.55	0.722	10102030	
18,680,300	0.050	---	---	---		06/07/2022	---	DIMAND (CR)	12	--- γ	12	24/03/2023	12	11.85	12	12	11.949	441@11.90	533@12.00	---	---		3,449	43	41,211.70	224,163.60	11.8	14.9	35101010	
54,200,000	0.075	---	0.035	---	19/07/2022	23/11/2021	---	EPSILON NET (CR)	7.46	1.63 P	7.34	24/03/2023	7.36	7.36	7.5	7.46	7.404	400@7.28	500@7.48	---	---		11,186	34	82,822.32	404,332.00	6.2	8	10101015	
40,134,921	0.400	---	---	---	30/08/1993	05/12/2022	---	IDEAL HOLDINGS (CR)	3.9	0.26 P	3.89	24/03/2023	3.85	3.85	3.94	3.9	3.907	200@3.89	100@3.92	---	---		8,991	63	35,128.75	156,526.19	3.38	4.07	10102030	
83,600,000	0.880	---	---	---	03/07/2007	23/09/2022	---	INTRACOM HOLDINGS (CR)	1.84	1.21 P	1.818	24/03/2023	1.854	1.83	1.858	1.84	1.845	6600@1.83	700@1.85	---	---		69,916	105	128,982.31	153,824.00	1.678	2.12	10101010	
160,523,985	0.300	---	---	---	12/08/2008	30/12/2022	---	INTRAKAT (CR)	1.63	3.82 P	1.57	24/03/2023	1.618	1.564	1.63	1.63	1.597	5560@1.62	4744@1.63	---	---		474,749	502	758,404.97	261,654.10	1.366	1.788	50101010	
167,868,482	0.300	---	---	---	20/08/2007	28/11/2022	---	LAVIPHARM SA (CR)	0.398	-0.50 €	0.4	24/03/2023	0.414	0.394	0.414	0.398	0.402	200@0.397	4800@0.404	---	---		18,823	31	7,565.90	66,811.66	0.366	0.48	20103015	
4,740,000	0.860	---	---	---		14/03/2003	---	LOGISMOS S.A. (CR)	0.998	--- γ	0.998	24/03/2023	---	---	---	---	---	250@0.930	500@0.980	---	2021		---	---	---	4,730.52	0.946	1.1	10101015	
17,120,280	0.940	0.06	0.06	---	27/06/2022	02/08/2019	---	LOULIS FOOD (CR)	2.59	--- γ	2.59	24/03/2023	---	---	---	---	---	220@2.48	100@2.56	---	---		---	---	---	44,341.53	2.38	2.82	45102020	
4,419,616	1.58	---	---	0.1131	01/03/2023	04/03/2015	---	MEDICON S.A (CR)	3.87	5.16 P	3.68	24/03/2023	3.88	3.86	3.88	3.88	3.873	1050@3.52	738@3.80	---	---		397	3	1,537.76	17,103.91	3.45	4.15	20102010	
468,700		2.24	3.42	---	03/05/2022	21/05/2004	---	MERMEREN KOMB. A.D. PR. (GDR)	49	-1.21 €	49.6	24/03/2023	49	46	49	49	47.068	113@46.00	42@49.00	1.55	2021		191	12	8,990.00	22,966.30	43.4	59	55102000	
10,500,000	0.950	---	---	---	24/06/2008	22/07/2022	---	MEVACO SA (CR)	3.1	1.31 P	3.06	24/03/2023	3.12	3.1	3.14	3.1	3.112	200@3.02	250@3.10	16.80	2021		185	5	575.70	32,550.00	2.52	3.22	55102015	
87,127,162	0.500	---	---	---	21/05/2008	28/07/2021	---	PREMIA (CR)	1.125	2.74 P	1.095	24/03/2023	1.095	1.095	1.14	1.125	1.123	1750@1.12	3200@1.14	---	---		47,336	90	53,144.92	98,018.06	1.07	1.36	35101010	
24,377,795	0.230	---	---	---	27/06/2022	08/06/2022	---	PROFILE SA (CR)	2.8	1.27 P	2.765	24/03/2023	2.78	2.75	2.8	2.8	2.765	300@2.77	464@2.80	---	---		10,879	40	30,084.95	68,257.83	2.575	3.18	10101010	
27,345,120	0.280	---	---	---	18/07/2005	26/02/2014	---	QUALITY & RELIABILITY SA (CR)	0.534	0.38 P	0.532	24/03/2023	0.532	0.532	0.55	0.534	0.538	9000@0.530	400@0.534	---	---		15,214	33	8,183.54	14,602.29	0.465	0.6	10101010	
57,434,884	1.31	---	---	---	05/06/2008	12/06/2009	---	REDS S.A. (CR)	2.49	--- γ	2.49	24/03/2023	---	---	---	---	---	415@2.36	510@2.50	---	---		---	---	---	---	143,012.86	2.3	3	35101010
6,456,530	1.08	0.0804	0.12	---	14/07/2022	02/08/2010	---	SPACE HELLAS SA (CR)	6.4	1.59 P	6.3	24/03/2023	6.28	6.28	6.4	6.4	6.318	100@6.30	1196@6.40	---	---		909	14	5,743.14	41,321.79	5.28	6.9	15101010	
17,190,046	0.290	---	---	---	16/11/1992	30/11/2022	---	UNIBIOS (CR)	0.6	0.67 P	0.596	24/03/2023	0.614	0.6	0.614	0.6	0.602	1844@0.600	3000@0.602	---	---		20,286	22	12,217.95	10,314.03	0.558	0.719	50204000	
144,321,516	0.300	---	---	---	01/07/2011	22/01/2020	---	AVAX S.A. (CR)	0.77	-0.26 €	0.772	24/03/2023	0.772	0.762	0.791	0.77	0.772	3822@0.770	808@0.775	---	---		85,181	164	65,771.69	111,127.57	0.751	1	50101010	
32,413,681	0.370	---	---	---	15/07/2009	11/05/2000	---	ALUMIL (CR)	2.12	-1.85 €	2.16	24/03/2023	2.12	2.09	2.15	2.12	2.113	699@2.11	416@2.12	---	---		52,730	160	111,441.12	68,717.00	1.986	2.54	55102035	
3,534,269	3.44	(0.4452)	0.6908	---	16/12/2022	19/07/2022	---	ANDROMEDA SA (CR)	6.5	3.18 P	6.3	24/03/2023	6.5	6.3	6.5	6.5	6.34	16@6.30	37@6.50	3.37	2021		75	3	475.50	22,972.75	6	6.9	30204000	
18,810,000	0.400	---	---	---	08/07/2010	14/11/2007	---	VARVERIS - MODA BAGNO SA (CR)	0.692	2.67 P	0.674	24/03/2023	0.674	0.674	0.692	0.692	0.69	17@0.692	800@0.708	---	---		563	7	388.52	13,016.52	0.62	0.8	40401025	
24,060,000	0.300	0.035	0.055	---	12/04/2022	01/07/2019	---	GEN. COMMERCIAL & IND.SA (CR)	1.35	1.89 P	1.325	24/03/2023	1.35	1.35	1.35	1.35	1.35	100@1.26	100@1.33	8.35	2022		72	2	97.20	32,481.00	1.175	1.37	50205010	
15,878,748	0.480	---	---	---	10/07/2006	22/03/2004	---	DOMIKI KRITIS SA (CR)	0.778	1.04 P	0.77	24/03/2023	0.74	0.732	0.78	0.78	0.76	450@0.746	300@0.790	---	---		2,075	11	1,577.77	12,353.67	0.72	0.85	50101010	
34,720,000	0.310	---	---	---	16/06/2010	01/08/2007	---	DROMEAS SA (CR)	0.322	--- γ	0.322	24/03/2023	---	---	---	---	---	500@0.307	1000@0.320	---	---		---	---	---	---	11,179.84	0.3	0.389	40202015
11,250,000	0.520	---	0.0405	---	01/08/2022	09/11/2015	---	EKTER SA (CR)	1.4	-1.41 €	1.42	24/03/2023	1.42	1.395	1.425	1.4	1.404	76@1.40	1000@1.42	---	---		36,298	42	50,980.12	15,750.00	1.33	1.69	50101010	
18,410,839	1.00	0.027	0.262	---	24/08/2022	10/09/2010	---	ELASTRON (CR)	2.58	-0.77 €	2.6	24/03/2023	2.6	2.53	2.6	2.58	2.558	1030@2.51	1080@2.58	---	---		1,533	21	3,921.77	47,499.96	2.21	2.82	55102010	
19,864,886	5.60	0.672	0.672	---	05/05/2022	02/07/2008	---	BANK OF GREECE (CR)	16.6	0.30 P	16.55	24/03/2023	16.85	16.55	16.85	16.6	16.685	49@16.60	80@16.70	---	---		730	25	12,179.75	329,757.11	16.15	18	30101010	
60,348,000	0.420	0.07	0.1515	---	08/06/2022	04/08/2021	---	HELLENIC EXCHANGES-A.S.E. (CR)	4.04	--- γ	4.04	24/03/2023	4.1	3.98	4.1	4.04	4.02	2068@4.04	563@4.05	---	---		73,941	242	297,275.37	243,805.92	3.09	4.525	30202015	
26,730,187	0.520	0.08	0.1	---	29/06/2022	01/08/2017	---	ELTON SA (CR)	2.27	--- γ	2.27	24/03/2023	2.27	2.23	2.27	2.27	2.24	160@2.23	1460@2.27	---	---		12,563	52	28,146.14	60,677.52	2.08	2.44	50205010	
30,000,000	0.050	0.06	0.09	---	13/05/2022	11/06/2020	---	ENTERSOFT (CR)	3.83	1.32 P	3.78	24/03/2023	3.78	3.77	3.85	3.83	3.809	300@3.80	90@3.83	---										

Number of Outstanding Securities	Nominal Value	Dividends [1]			Date of Last Coupon		Note	Shares	Closing price	% change	Previous closing price/date		Open price	Price min	Price max	Last price	Avg price	Last Bid [7]	Last Ask [7]	P/E after tax	Year	Volume	Trades	Transactions Value[8]	Company Mkt Value (thou. €)	Year low	Year high	Sector[4]	
		2020	2021	2022	Dividend [2]	Right																							
8,424,900	0.500	---	---	---	12/07/2010	04/07/2019	---	INTERTECH SA (CR)	1.03	---	↘	1.03	24/03/2023	---	---	---	---	90@1.00	1000@1.03	66.24	2021	---	---	---	8,677.65	0.92	1.185	50205010	
19,804,134	0.150	---	---	---	01/07/2004	06/11/2017	---	KEKROPS SA (CR)	1.038	0.58	⬇	1.032	24/03/2023	1.032	1.02	1.06	1.06	1.038	500@1.04	250@1.06	---	2021	6,180	25	6,413.42	20,556.69	0.903	1.4	35101010
40,219,218	0.260	---	---	---	29/08/2022	10/06/2019	---	KLOUKINAS - LAPPAS SA (CR)	0.948	0.42	⬇	0.944	24/03/2023	0.95	0.94	0.95	0.948	0.945	2500@0.942	22295@0.952	---	---	12,029	23	11,365.18	38,127.82	0.5	0.96	50101010
21,224,340	0.420	0.0035	0.02	---	06/09/2022	25/04/2006	---	KORDELLOS BROS SA (CR)	0.588	0.69	⬇	0.584	24/03/2023	0.576	0.574	0.588	0.588	0.578	500@0.576	950@0.588	2.88	2021	12,465	15	7,202.88	12,479.91	0.462	0.7	55102010
33,065,136	0.380	0.2	0.2001	---	18/08/2022	16/09/2013	---	KRI-KRI S.A. (CR)	6.44	0.63	⬇	6.4	24/03/2023	6.4	6.4	6.54	6.44	6.449	50@6.40	135@6.46	16.12	2021	852	10	5,494.58	212,939.48	6.08	6.7	45102020
18,017,472	0.360	---	---	---	09/09/2022	28/08/2017	---	KTIMA KOSTAS LAZARIDIS SA (CR)	1.7	---	↘	1.7	24/03/2023	---	---	---	---	170@1.60	1239@1.70	---	---	---	---	---	30,629.70	1.55	1.78	45101015	
7,595,160	0.600	---	---	---	10/09/2019	18/08/2010	---	KIRIAKOULIS SHIPPING SA (CR)	1.1	---	↘	1.1	24/03/2023	---	---	---	---	190@1.05	10@1.10	---	---	---	---	---	8,354.68	1	1.265	40501015	
5,939,268	0.620	---	---	---	10/07/2003	03/01/2002	---	LANAKAM SA (CR)	0.906	-2.16	⬇	0.926	24/03/2023	0.858	0.856	0.914	0.906	0.869	800@0.842	50@0.906	---	---	837	22	727.59	5,380.98	0.716	1.16	40401020
9,819,370	0.500	---	---	---	14/08/2007	09/01/2004	---	MATHIOS REFRACTORY SA (CR)	0.72	---	↘	0.72	24/03/2023	---	---	---	---	400@0.675	175@0.735	---	---	---	---	---	7,069.95	0.565	0.885	55101000	
29,250,000	0.360	0.02	0.0401	---	21/06/2022	25/04/2019	---	MOTODYNAMICS S.A. (CR)	2.87	0.70	⬇	2.85	24/03/2023	2.82	2.82	2.87	2.87	2.844	3000@2.82	4287@2.87	---	---	13,765	36	39,143.62	83,947.50	2.04	3.1	40401030
32,188,050	1.04	---	---	---	21/07/2008	20/01/2000	---	MOUZAKIS (CR)	0.708	---	↘	0.708	24/03/2023	---	---	---	---	300@0.670	2000@0.730	---	---	---	---	---	22,789.14	0.65	0.806	55101020	
43,200,000	1.00	---	0.0824	---	07/09/2022	14/06/2022	---	MPLE KEDROS (CR)	2.25	-0.44	⬇	2.26	24/03/2023	2.25	2.24	2.26	2.25	2.249	1286@2.24	950@2.27	---	---	16,654	16	37,459.36	97,200.00	2.19	2.29	35102000
4,971,466	1.46	---	---	---	04/07/2007	08/10/2003	---	PAIRIS SA (CR)	0.94	---	↘	0.94	24/03/2023	---	---	---	---	1000@0.910	72@0.942	---	---	---	---	---	4,673.18	0.83	1.18	50203030	
27,098,594	0.540	0.07	0.05	0.0201	05/12/2022	14/01/2021	---	PAPOUTSANIS (CR)	2.35	---	↘	2.35	24/03/2023	2.35	2.35	2.35	2.35	2.35	250@2.27	64@2.35	---	---	100	5	235.00	63,681.70	2.26	2.51	45201020
7,070,400	0.930	0.1081	0.3242	---	17/06/2022	06/05/2016	---	PETROPOULOS PETROS (CR)	6.56	0.31	⬇	6.54	24/03/2023	6.46	6.32	6.6	6.56	6.549	500@6.52	1275@6.56	---	---	18,210	65	119,251.98	46,381.82	5.9	6.6	50206015
22,075,665	0.330	0.05	0.1	---	21/06/2022	23/11/2021	---	PLAISIO COMPUTERS SA (CR)	4.58	---	↘	4.58	24/03/2023	4.58	4.58	4.58	4.58	4.58	58653@4.58	---	---	---	5,700	3	26,106.00	101,106.55	4.48	4.6	40401010
43,741,452	0.660	0.16	0.2723	0.0698	30/01/2023	01/11/1999	---	THRACE PLASTICS SA (CR)	4.02	2.29	⬇	3.93	24/03/2023	3.955	3.93	4.07	4.02	3.97	82@3.95	98@4.02	---	---	13,155	96	52,224.21	175,840.64	3.76	4.68	50203015
21,912,599	0.300	---	---	---	11/04/2011	23/02/2007	---	REVOIL (CR)	1.305	2.35	⬇	1.275	24/03/2023	1.285	1.275	1.305	1.305	1.283	23@1.28	100@1.31	---	---	3,282	16	4,211.70	28,595.94	1.21	1.5	60101020
13,582,223	1.35	---	---	---	24/06/2008	02/02/2016	---	SIDMA STEEL (CR)	2.44	---	↘	2.44	24/03/2023	2.53	2.41	2.53	2.44	2.436	200@2.40	500@2.44	---	---	2,160	24	5,260.95	33,140.62	1.85	2.85	55102010
40,693,350	5.00	---	---	---	03/07/2006	26/05/2015	---	TECHNICAL OLYMPIC SA (CR)	2.04	-0.97	⬇	2.06	24/03/2023	2.06	2	2.07	2.04	2.034	960@2.01	245@2.04	---	---	3,572	28	7,264.39	83,014.43	1.76	2.41	40202010
3,048,000	0.300	---	---	---	06/07/2007	01/06/2021	---	TZIRAKIAN PROFIL (CR)	1.9	1.06	⬇	1.88	24/03/2023	1.895	1.845	1.9	1.9	1.855	173@1.85	601@1.90	2.06	2021	2,907	22	5,391.72	5,791.20	1.76	2.22	55102010
10,203,575	0.730	---	---	---	16/07/2007	18/10/1999	---	FIERATEX SA (CR)	0.415	0.24	⬇	0.414	24/03/2023	0.415	0.415	0.415	0.415	0.415	5000@0.410	139@0.422	4.89	2021	500	1	207.50	4,234.48	0.4	0.5	55101020
8,340,750	1.16	---	---	---	25/06/2009	17/09/2018	---	HAIDEMENOS SA (CR)	0.525	---	↘	0.525	24/03/2023	---	---	---	---	200@0.490	579@0.525	19.45	2021	---	---	---	4,378.89	0.452	0.6	50205030	

Main Market - Low Liquidity Class

14,000,000	4.15	---	3.42	---	14/09/2022	29/06/1999	---	---	ALPHA REAL ESTATE SA(CR)	8.06	-0.25	⬆	8.08	24/03/2023	7.88	7.88	8.54	8.4	8.07	100@8.14	25@8.38	---	---	43	3	347.00	112,840.00	6.68	9.22	35101015
151,654,947	0.040	---	---	---	01/07/2008	21/02/2020	---	---	AVE (CR)	0.522	-1.51	⬆	0.53	24/03/2023	0.522	0.518	0.528	0.522	0.522	5000@0.516	350@0.524	---	---	31,600	29	16,483.60	79,163.88	0.506	0.586	40301010
11,795,024	0.540	0.087	0.136	---	04/07/2022	30/08/2019	---	---	FLEXOPACK SA (CR)	9	---	↘	9	24/03/2023	---	---	---	---	---	50@8.35	60@9.00	---	---	---	---	---	106,155.22	7.45	9.45	50203030
10,500,000	4.00	0.37	0.29	---	31/05/2022	02/08/2016	---	---	INTERCONTINENTAL (CR)	6.5	-2.26	⬆	6.65	24/03/2023	6.5	6.5	6.55	6.5	6.511	500@6.35	5@6.50	---	---	795	7	5,176.25	68,250.00	6.3	6.85	35102000
151,532,467	0.500	0.01	0.02	---	22/07/2022	10/06/2020	---	---	TRASTOR REAL EST. INV. CO.(CR)	1.07	---	↘	1.07	24/03/2023	---	---	---	---	---	1357@1.03	1500@1.07	---	---	---	---	---	162,139.74	0.965	1.14	35102000
15,300,000	0.300	---	---	---	30/07/2009	13/12/1999	---	---	ATTICA PUBLICATIONS SA (CR)	0.388	---	↘	0.388	24/03/2023	0.35	0.35	0.35	0.35	0.35	---	1000@0.350	---	---	300	2	105.00	5,936.40	0.3	0.39	40301030
23,986,500	1.05	---	---	---	26/06/2009	15/03/2000	---	---	BIOKARPET S.A.(CR)	2.04	-1.92	⬆	2.08	24/03/2023	2.06	2.02	2.14	2.04	2.07	460@2.06	2000@2.08	---	---	4,715	20	9,761.70	48,932.46	1.5	2.14	50101035
6,325,000	0.600	---	0.19	---	04/07/2022	17/02/2014	---	---	VOYATZOGLOU (CR)	2.42	---	↘	2.42	24/03/2023	---	---	---	---	---	100@2.18	87@2.28	---	---	---	---	---	15,306.50	1.97	2.42	50205010
15,000,000	0.300	---	---	---	06/07/2007	18/07/2000	---	---	DAIOS PLASTICS SA (CR)	3.12	---	↘	3.12	24/03/2023	---	---	---	---	---	50@3.02	400@3.42	---	---	---	---	---	46,800.00	2.92	3.52	50203015
13,673,200	0.880	---	---	---	18/07/2008	26/07/2001	---	---	EVROFARMA SA (CR)	0.76	2.43	⬆	0.742	24/03/2023	0.71	0.71	0.76	0.76	0.758	500@0.730	1268@0.792	---	---	939	8	711.85	10,391.63	0.684	0.876	45102020
3,307,500	0.210	---	---	---	11/08/2010	30/11/2022	---	---	ELVE SA (CR)	4.74	---	↘	4.74	24/03/2023	---	---	---	---	---	38@4.70	12@4.86	---	---	---	---	---	15,677.55	4.62	5.2	40204020
60,295,607	0.240	---	---	---	09/07/2007	01/07/2021	---	---	ELGEKA SA (CR)	0.41	-4.21	⬆	0.428	24/03/2023	0.427	0.41	0.427	0.41	0.413	78@0.410	1000@0.415	---	---	11,673	12	4,815.23	24,721.20	0.38	0.459	45201010
23,828,130	0.500	---	0.0737	---	18/07/2022	17/02/2009	---	---	ELINOIL S.A. (CR)	2.09	0.48	⬆	2.08	24/03/2023	2.07	2.07	2.13	2.09	2.11	4@2.07	500@2.09	---	---	2,115	11	4,462.75	49,800.79	1.82	2.5	60101020
86,735,980	0.310	---	---	---	06/07/2009	18/08/2022	---	---	ATHENS MEDICAL CENTER SA (CR)	1.525	1.33	⬆	1.505	24/03/2023	1.545	1.48	1.545	1.525	1.509	5@1.53	368@1.53	---	---	1,998	19	3,015.62	132,272.37	1.4	1.8	20101025

Number of Outstanding Securities	Nominal Value	Dividends [1]			Date of Last Coupon		Note	Shares	Closing price	% change	Previous closing price/date		Open price	Price min	Price max	Last price	Avg price	Last Bid [7]	Last Ask [7]	P/E after tax	Year	Volume	Trades	Transactions Value[8]	Company Mkt Value (thou. €)	Year low	Year high	Sector[4]	
		2020	2021	2022	Dividend [2]	Right																							
2,760,000	11.83	9.4	11	---	14/06/2022	16/07/1990	---	KARELIA (CR)	316	---	316	24/03/2023	316	308	316	308	315.642	30@308.00	5@316.00	---	---	279	13	88,064.00	872,160.00	288	318	45103010	
6,700,000	0.800	0.179	0.047	---	24/08/2022	29/05/2014	---	MILLS KEPENOS (CR)	2.14	---	2.14	24/03/2023	---	---	---	---	---	300@2.02	298@2.26	21.63	2021	---	---	---	14,338.00	2.04	2.54	45102020	
11,510,102	0.890	---	---	---	24/06/2005	06/10/1999	---	NAFPAKTOS TEXTILE (CR)	0.998	-0.20	1	24/03/2023	0.932	0.932	1.025	1.025	0.963	300@0.932	28@1.03	---	---	1,193	10	1,148.49	11,487.08	0.93	1.23	55101020	
6,200,000	0.500	---	---	---	22/06/2010	01/11/1995	---	MINERVA KNITWEAR (CR)	0.49	---	0.49	24/03/2023	---	---	---	---	---	450@0.452	5@0.490	---	---	---	---	---	3,038.00	0.414	0.585	40204020	
21,364,000	1.12	---	---	---	29/07/2019	08/03/2023	---	LAMPSPA HOTEL SA (CR)	23	0.88	P	22.8	24/03/2023	23	23	23	23	100@20.20	100@23.80	---	---	225	2	5,175.00	491,372.00	20.6	24	40501025	
8,321,682	0.670	---	---	---	17/08/2007	23/11/1999	---	N. LEVENTERIS (CR)	0.306	---	0.306	24/03/2023	---	---	---	---	---	---	500@0.330	---	2021	---	---	---	3,220.52	0.22	0.364	50202010	
2,160,524	0.670	---	---	---	03/12/2018	23/11/1999	---	N. LEVENTERIS (PR)	0.312	---	0.312	24/03/2023	---	---	---	---	---	1000@0.282	---	---	2021	---	---	---	3,220.52	0.218	0.342	50202010	
6,340,000	0.600	0.134	0.17	0.1	09/12/2022	12/01/2023	---	NAKAS MUSIC	2.38	---	2.38	24/03/2023	2.38	2.38	2.38	2.38	2.38	100@2.32	2000@2.54	---	---	30	3	71.40	15,089.20	2.16	2.7	40401030	
10,080,000	3.00	1.42	1.5	---	27/04/2022	27/08/2001	---	TPA SA (CR)	26	2.77	P	25.3	24/03/2023	26	25	26	26	25.538	150@25.10	627@26.00	---	---	2,000	26	51,075.90	262,080.00	22.7	26.1	50206060
27,379,200	0.980	---	---	---	03/07/2020	29/08/2022	---	CRETE PLASTICS SA (CR)	16	---	16	24/03/2023	---	---	---	---	---	32@15.90	350@16.90	---	---	---	---	---	438,067.20	14.7	16.8	50203015	
255,494,534	2.71	0.352	0.279	0.11	14/12/2022	30/09/2021	---	PRODEA (CR)	8.6	---	8.6	24/03/2023	7.8	7.75	7.8	7.75	7.762	100@7.80	254@8.15	---	---	242	6	1,878.45	2,197,252.99	7.3	8.6	35102000	
4,181,450	0.500	---	---	---	21/08/2000	05/03/2002	---	FLOUR MILLS SARANTOPOULOS SA	1.25	---	1.25	24/03/2023	---	---	---	---	---	---	70@1.25	---	---	---	---	---	5,226.81	1.07	1.5	45102020	

Exchange Traded Funds (ETFs)

906,928	---	---	---	---	15/06/2016	---	---	---	ALPHA ETF FTSE Athex Large Cap	25.19	1.57	P	24.8	24/03/2023	24.8	24.8	25.19	25.19	24.813	79@24.80	108@28.00	---	---	31	2	769.19	---	22.5	27.79	12003
---------	-----	-----	-----	-----	------------	-----	-----	-----	--------------------------------	-------	------	---	------	------------	------	------	-------	-------	--------	----------	-----------	-----	-----	----	---	--------	-----	------	-------	-------

Surveillance

356,314,416	0.060	---	---	---	07/07/2010	21/09/2017	5160	FRIGOGLASS SA (CR)	0.058	-15.94	1	0.069	24/03/2023	0.069	0.058	0.0695	0.058	0.06225150@0.056	84410@0.062	---	---	532,796	62	33,249.79	20,666.24	0.052	0.158	50204000	
65,326,268	0.530	---	---	---	04/07/2007	19/07/2006	4750	SATO SA (CR)	0.035	-12.50	1	0.04	24/03/2023	0.035	0.035	0.035	0.035	0.035	6499@0.035	2000@0.039	---	---	6,500	3	227.50	2,286.42	0.021	0.069	40202015
13,191,620	0.620	---	---	---	04/08/2010	09/09/2002	5232	YALCO - CONSTANTINOU (CR)	0.2	---	0.2	24/03/2023	0.2	0.2	0.2	0.2	0.2	1002@0.200	2000@0.234	---	---	4,000	2	800.00	2,638.32	0.175	0.28	40202020	
13,000,000	1.00	---	---	---	01/08/2007	07/04/2000	5093	AKRITAS SA (CR)	0.5	---	0.5	24/03/2023	0.452	0.452	0.452	0.452	0.452	59@0.452	500@0.520	---	---	140	4	63.28	6,500.00	0.45	0.67	50101035	
221,519,681	0.300	---	---	---	02/07/2008	28/02/2011	4957	ANEK LINES SA (CR)	0.222	1.83	P	0.218	24/03/2023	0.23	0.222	0.23	0.222	0.22811020@0.220	5000@0.224	---	---	20,150	14	4,594.50	50,328.34	0.177	0.248	40501015	
312,163	0.300	---	---	---	02/07/2008	28/02/2011	4959	ANEK LINES SA (PR, issue '90)	0.072	---	0.072	24/03/2023	---	---	---	---	---	55000@0.086	---	---	---	---	---	---	50,328.34	0.072	0.086	40501015	
2,969,713	0.300	---	---	---	02/07/2008	28/02/2011	4958	ANEK LINES SA (PR, issue '96)	0.38	---	0.38	24/03/2023	---	---	---	---	---	---	---	---	---	---	---	---	50,328.34	0.173	0.38	40501015	
6,330,002	0.300	---	---	---	25/06/2002	15/03/2019	5162	VARVARESSOS (CR)	0.24	---	0.24	24/03/2023	---	---	---	---	---	---	1692@0.250	---	2021	---	---	---	1,519.20	0.16	0.25	55101020	
17,579,754	4.16	---	---	---	18/08/2006	02/08/2010	---	BIOTER SA (CR)	0.3	---	0.3	24/03/2023	---	---	---	---	---	---	2500@0.280	5000@0.298	---	---	---	---	---	5,273.93	0.21	0.398	50101010
54,654,600	0.050	---	---	---	01/07/1998	30/12/2022	5275	VIS SA (CR)	0.165	---	0.165	24/03/2023	0.179	0.179	0.179	0.179	0.179	5950@0.160	1000@0.179	---	2021	859	4	153.76	9,018.01	0.149	0.378	50203030	
3,961,300	1.28	---	---	---	29/06/2004	03/08/2000	5248	DUROS SA (CR)	0.26	---	0.26	24/03/2023	0.25	0.25	0.25	0.25	0.25	1930@0.250	651@0.300	---	2021	60	1	15.00	1,029.94	0.2	0.3	40204020	
51,754,364	0.300	---	---	---	23/12/2003	24/01/2007	5197	SELECTED TEXT. IND. ASSOC (CR)	0.14	---	0.14	24/03/2023	---	---	---	---	---	---	5000@0.126	2900@0.160	---	---	---	---	---	7,245.61	0.11	0.202	55101020
371,337,000	0.300	---	---	---	30/05/2013	01/07/2022	---	INTRALOT (CR)	0.635	0.79	P	0.63	24/03/2023	0.64	0.635	0.64	0.635	0.63724810@0.630	6885@0.635	---	---	57,227	38	36,472.21	235,799.00	0.575	0.765	40501020	
7,125,216	0.650	---	---	---	01/07/2005	14/12/1999	4955	KRE.KA SA (CR)	0.27	-6.25	1	0.288	24/03/2023	0.27	0.27	0.27	0.27	0.27	250@0.270	3250@0.290	---	2021	4,190	6	1,131.30	1,923.81	0.17	0.43	45102010
7,734,375	1.00	---	---	---	09/07/2007	07/01/2011	5266	LIVANIS SA (CR)	0.125	---	0.125	24/03/2023	0.145	0.145	0.145	0.145	0.145	567@0.145	700@0.150	---	---	29	1	4.21	966.80	0.12	0.18	40301030	
15,842,391	1.51	---	---	---	15/07/2009	12/05/2000	5141	BITROS HOLDING SA (CR)	0.56	1.82	P	0.55	24/03/2023	0.56	0.56	0.56	0.56	0.56	500@0.505	2993@0.560	---	---	9,750	10	5,460.00	8,871.74	0.408	0.82	55102010
24,319,250	0.300	---	---	---	09/07/2002	04/07/2007	5165	PROODEFTIKH SA (CR)	0.49	---	0.49	24/03/2023	0.49	0.49	0.49	0.49	0.49	4000@0.402	1100@0.480	---	---	2,000	3	980.00	11,916.43	0.4	0.6	50101010	
28,438,268	0.070	---	---	---	21/08/2006	24/11/1999	5253	SPIROY AGRICULTURE SA (CR)	0.187	---	0.187	24/03/2023	0.224	0.151	0.224	0.151	0.188	2000@0.170	4232@0.224	---	---	100	2	18.75	5,317.96	0.15	0.23	45102010	
766,000	1.00	---	---	---	01/07/2004	11/12/2012	5193	TRIA ALFA SA (CR)	12.9	---	12.9	24/03/2023	---	---	---	---	---	---	70@12.70	-(6)-	2021	---	---	---	---	12,355.90	7.6	16.9	55101020
245,000	1.00	---	---	---	19/07/2010	11/12/2012	5194	TRIA ALFA SA (PR)	10.1	---	10.1	24/03/2023	---	---	---	---	---	---	50@8.25	25@11.00	78.55	2021	---	---	---	12,355.90	3.8	12.6	55101020

Suspension Status

5,867,311	0.300	---	---	---	11/08/2010	28/04/2017	5243	---	DIONIC (CR)	0.11	---	0.11	30/06/2020	---	---	---	---	---	---	---	---	---	---	---	---	---	645.40	0.11	0.11	50205010
-----------	-------	-----	-----	-----	------------	------------	------	-----	-------------	------	-----	------	------------	-----	-----	-----	-----	-----	-----	-----	-----	-----	-----	-----	-----	-----	--------	------	------	----------

Number of Outstanding Securities	Nominal Value	Dividends [1]			Date of Last Coupon		Note	Shares	Closing price	% change	Previous closing price/date		Open price	Price min	Price max	Last price	Avg price	Last Bid [7]	Last Ask [7]	P/E after tax	Year	Volume	Trades	Transactions Value[8]	Company Mkt Value (thou. €)	Year low	Year high	Sector[4]
66,948,210	0.300	---	---	---	22/09/2015	22/09/2015	5179	FOLLI FOLLIE (CR)	4.8	---	4.8	24/05/2018	---	---	---	---	---	---	---	---	---	---	---	---	321,351.41	4.8	4.8	40401030
12,417,000	0.310	---	---	---	27/08/2019	28/08/2017	5233	MLS MULTIMEDIA SA (CR)	0.57	---	0.57	12/05/2020	---	---	---	---	---	---	---	---	---	---	---	---	7,077.69	0.57	0.57	10101015
33,301,715	0.320	---	---	---	27/06/2003	08/07/2009	5241	AEGEK (CR)	0.035	---	0.035	25/06/2020	---	---	---	---	---	---	---	---	---	---	---	---	1,165.56	0.035	0.035	50101010
4,737,503	0.320	---	---	---	22/06/2005	22/09/2015	5115	VARANGIS AVEPE S.A. (CR)	0.11	---	0.11	02/03/2022	---	---	---	---	---	---	---	---	---	---	---	---	521.13	0.11	0.11	40202015
7,085,888	1.59	---	---	---	02/07/1996	06/09/2010	5216	ELVIEMEK (CR)	2.6	---	2.6	30/09/2019	---	---	---	---	---	---	---	---	---	---	---	---	18,423.31	2.6	2.6	35101010
25,179,640	0.600	---	---	---	08/08/1994	19/09/2000	5191	PALAIOI OINOI NAOUSIS (CR)	0.026	---	0.026	01/10/2018	---	---	---	---	---	---	---	---	---	---	---	---	742.45	0.026	0.026	45101015
1,540,000	0.600	---	---	---	08/08/1994	19/09/2000	5192	PALAIOI OINOI NAOUSIS (PR)	0.057	---	0.057	01/10/2018	---	---	---	---	---	---	---	---	---	---	---	---	742.45	0.057	0.057	45101015

Shares' Notes

Code	Note text
()	- Adjusted dividends.
*	- Last adjusted closing price.
[1]	- Net dividends.
[2]	- The "Date of Last Coupon" for New listings refers to the date company's stocks started to trade in Athex
[3]	- The Company Market Value is referred to the number of outstanding shares
[4]	- Sectors codification can be found in Appendix A
[5]	- The Market Value refers to the total number of shares listed (including their several classes) in the exchange by the company.
[6]	- P/E greater than 100
[7]	- Last view of the Order Book before the end of the trading session
[8]	- All Blocks Methods' Transactions Value are included.
4750	- Transfer to the Under Surveillance Category from 8/4/2011.
4955	- Transfer to the Surveillance Category as from 5/4/2013.
4957	- Transfer to the Surveillance Category as from 5/4/2013.
4958	- Transfer to the Surveillance Category as from 5/4/2013.
4959	- Transfer to the Surveillance Category as from 5/4/2013.
5093	- Transfer to the Surveillance Category as of 8/4/2015.
5115	- Transfer to the Surveillance Category as of 15/04/2016.
5141	- Transfer to the Surveillance Category as of 10/05/2017.
5160	- Transfer to the Surveillance Category as of 15/04/2016.
5162	- Transfer to the Under Supervision Category as of 21/12/2009.
5165	- Transfer to the Surveillance Category as of 15/02/2018.
5179	- Suspension of trading as of 25/05/2018.
5191	- Suspension of trading as of 02/10/2018.
5192	- Suspension of trading as of 02/10/2018.
5193	- Transfer to the Surveillance Category as of 25/10/2018.
5194	- Transfer to the Surveillance Category as of 25/10/2018.
5197	- Transfer to the Surveillance Category as of 07/11/2018.
5216	- Suspension of trading as of 01/10/2019.
5232	- Transfer to the Under Surveillance Category from 08/04/2011.
5233	- Suspension of trading as of 13/05/2020.
5241	- Suspension of trading as of 26/06/2020.
5243	- Suspension of trading as of 01/07/2020.
5248	- Transfer to the Surveillance Category as of 06/09/20116.
5253	- Transfer to the Surveillance Category as of 14/5/2021.
5266	- Suspension of trading as of 04/05/2022.
5275	- Transfer to the Surveillance Category as of 09/07/2020.

Securities Blocks Details

Securities	Block Volume	Price	Block Trade Value	Time of approval	Note
EUROBANK HOLDINGS (CR)	385,194	1.20	460,306.83	11:23:38	20
NATIONAL BANK (CR)	96,642	4.38	422,905.39	11:26:30	20
NATIONAL BANK (CR)	104,280	4.40	458,727.72	14:18:20	20
FOURLIS (CR)	26,000	3.50	91,000.00	16:45:18	20
EUROBANK HOLDINGS (CR)	1,046,134	1.21	1,268,437.48	16:59:30	20

Blocks Notes

- 9 - Method 6-1 / Special Fees
- 10 - Method 6-1 / Special Fees, SDS
- 14 - Method 6-3 / Settlement, Incomplete Buy and Sell
- 18 - Method 6-2 / SPOT 1
- 19 - Method 6-2 / SPOT 2
- 20 - Method 6-1 and Method 6-1 Same Day Settlement
- 21 - Other Pre-agreed

Shares Rights Details

Occured date	Exercise from	Exercise until	Trading until	Rights	Price min	Price max	Closing price	Last Bid	Last Ask	Volume	Trades	Transactions Value
-----------------	------------------	-------------------	------------------	--------	--------------	--------------	------------------	----------	----------	--------	--------	-----------------------

No Rights Transactions.

Forced Sales Details

Securities	Category of Security	Transactions Volume	Number of Trades	Transactions Value	Note
No Forced Transactions.					

Forced Sales Notes

- 1 - Compulsory Public Forced Sales
- 2 - Forced Sales of Fixed Registered Shares
- 3 - Forced Sales of Remaining Fractional Shares

Forced Sales Registered Shares

Securities	Start Date	End Date	Initial Volume	Remaining Volume	Date	Avg price (day)	Avg price (period)	Number of Trades	Transactions Volume	Transactions Value
No Fixed Registered Shares Forced Sales.										

Forced Sales Notes

According to Decision 1/380/04.05.2008 of the Hellenic Republic Capital Market Commission, the certificated registered shares that have not been deposited to the issuer for dematerialisation, will be auctioned in the Athens Exchange by the supervising issuer. Forced sales procedure is held according to Article 99A of the Athens Exchange Rulebook. The average price of the period is calculated by dividing the Total transactions value by the Total volume and includes all the transactions made until the current date.

Exchange Traded Funds (ETFs) Characteristics

	Transactions Date (T)	Creation / Redemption	Units (T-1)	New Units (T-1)	Redemption Units (T-1)	Units (T) [1]	Fund Assets [2]	Net Unit Price	Dividend per Unit	Dividend Date
ALPHA ETF FTSE Athex Large Cap	27/03/2023	5,000	906,928	---	---	906,928	22,542,430.00	24.8558	0.52	01/07/2022

ETFs Notes

[1] - Units (T) = Units (T-1) + New Units (T-1) - Redemption Units (T-1)

[2] - The Creation / Redemption Units of T-1 are included.

Convertible Corporate Bonds - Regulated Market

Num Listed Bonds	Nominal price	Issue price	Today's Rate	Exp. Date	Duration (years)	Note	Coupon		Trading Unit	Corporate Bonds	Price min	Price max	Closing price	Previous closing price/date	Volume	Transactions Value	Last order		ear min	Year max
							Common	Preffered									Price	Buy / Sell		
							---		#Error				#Type!				#Type!			

Corporate Bonds Notes

Transactions Volume = (Pieces) * (Nominal Price). Transactions Value = (Pieces) * (Nominal Price) * (price %) + (Accrued interest).
The price of a Bond is stated as a percentage (%) of Bond's Nominal Price.
Nominal Price in Euros (€), except if it is noted differently.

Non Convertible Corporate Bonds - Regulated Market

Num Listed Bonds	Nominal price	Issue price	Today's Rate	Exp. Date	Duration (years)	Note	Coupon		Trading Unit	Corporate Bonds	Accrued Int.	Yield.T.Mat	Price min	Price max	Closing price	Previous closing price/date	Volume	Transactions Value	Last order		ear min	Year max		
							Common	Preferred											Price	Buy / Sell			Date	
100,000	1,000.00	1,000.00	2.95	11/02/2027	5	---	3	---	1	SAFE BULKERS PARTICIPATIONS PLC (Non Convertible)	3.6056	5.1220	91.9600	92.4225	92.3238	91.5400	24/03/2023	13,000	12,048.97	90.0000	B	27/03/2023	89.9269	96.3000
320,000	1,000.00	1,000.00	3.40	21/07/2027	7	---	6	---	1	LAMDA DEVELOPMENT S.A. (Non Convertible)	6.1389	4.8240	93.0000	94.0000	93.2366	93.7300	24/03/2023	151,000	141,714.17	92.7100	B	27/03/2023	91.6000	95.5000
200,000	1,000.00	1,000.00	2.10	27/10/2027	7	---	5	---	1	O.P.A.P. S.A. (Non Convertible)	8.9250	3.7260	92.3200	93.3997	92.7943	93.2500	24/03/2023	34,000	31,853.52	92.5302	B	27/03/2023	92.3100	95.4000
200,000	1,000.00	1,000.00	1.90	23/03/2028	7	---	5	---	1	MOTOR OIL CORINTH REFINERIES SA (Non Convertible)	0.3167	4.5150	88.5000	88.6000	88.5006	88.7680	24/03/2023	57,000	50,493.36	88.5001	B	27/03/2023	88.0000	90.5000
100,000	1,000.00	1,000.00	2.70	25/05/2026	5	---	4	---	1	COSTAMARE PARTICIPATIONS PLC (Non Convertible)	9.3000	4.8650	93.2500	93.7000	93.3112	93.5030	24/03/2023	17,000	16,021.00	93.2700	B	27/03/2023	92.1400	97.0000
300,000	1,000.00	1,000.00	2.30	20/07/2028	7	---	4	---	1	PRODEA REIC S.A.(Non Convertible)	4.3444	5.9810	84.0300	84.0300	84.0300	83.8750	24/03/2023	12,000	10,135.73	84.0200	B	27/03/2023	82.0100	85.8000
150,000	1,000.00	1,000.00	2.65	22/10/2026	5	---	3	---	1	CPLP SHIPPING HOLDINGS PLC (Non Convertible)	11.4833	4.0830	94.2000	95.0000	94.9800	94.5000	24/03/2023	19,000	18,251.38	94.0001	B	27/03/2023	92.5500	96.0000
250,000	1,000.00	1,000.00	2.45	16/11/2028	7	---	3	---	1	ELVALHALCOR S.A. (Non Convertible)	9.0514	5.0530	87.0101	88.0000	87.6855	87.9800	24/03/2023	56,000	49,610.75	87.0100	B	27/03/2023	85.6375	91.0000
500,000	1,000.00	1,000.00	2.75	03/07/2027	7	---	6	---	1	GEK TERNA S.A. (Non Convertible)	6.4931	5.7460	88.0000	89.0000	88.0925	88.9500	24/03/2023	53,000	47,033.14	88.3000	B	27/03/2023	86.8000	91.0000
300,000	1,000.00	1,000.00	2.30	14/12/2028	7	---	3	---	1	GEK TERNA S.A. (Non Convertible)	6.7083	5.8800	83.1000	84.0002	83.7521	85.1000	24/03/2023	49,000	41,367.23	83.2002	B	27/03/2023	82.3300	87.4500
175,000	1,000.00	1,000.00	3.40	26/07/2024	5	---	8	---	1	ATTICA HOLDINGS S.A. (Non Convertible)	5.8556	4.9420	96.9000	98.0999	97.2520	96.9180	24/03/2023	64,000	62,616.05	97.0200	B	27/03/2023	96.6179	98.5000
230,000	1,000.00	1,000.00	4.70	12/07/2029	7	---	2	---	1	LAMDA DEVELOPMENT S.A. (Non convertible)	9.9222	4.5480	99.7000	100.8000	99.9917	100.2120	24/03/2023	24,000	24,236.13	99.7000	B	27/03/2023	98.0000	101.0000
100,000	1,000.00	1,000.00	4.40	26/07/2029	7	---	2	---	1	CPLP SHIPPING HOLDINGS PLC (Non Convertible)	7.5778	4.5250	98.6500	98.8000	98.7053	98.6500	24/03/2023	19,000	18,897.98	98.7001	B	27/03/2023	97.2369	100.8000
200,000	1,000.00	1,000.00	3.60	12/03/2026	7	---	9	---	1	AEGEAN AIRLINES S.A. (Non Convertible)	1.6000	3.9460	96.6100	98.4900	97.5063	98.2770	24/03/2023	54,000	52,739.78	96.8170	B	27/03/2023	95.6301	98.6000
150,000	1,000.00	1,000.00	2.60	22/10/2026	7	---	7	---	1	TERNA ENERGY FINANCE S.A. (Non Convertible)	11.2667	4.1300	92.8801	93.9999	93.9997	94.0000	23/03/2023	6,000	5,696.39	92.8801	B	27/03/2023	92.5000	95.7400
100,000	1,000.00	1,000.00	2.80	25/01/2027	5	---	3	---	1	PREMIA S.A. (Non Convertible)	4.9000	6.3190	88.3149	88.5000	88.3612	88.7980	24/03/2023	4,000	3,554.05	88.3002	B	27/03/2023	88.0202	92.5100
120,000	1,000.00	1,000.00	3.95	04/04/2025	7	---	10	---	1	GEK TERNA S.A. (Non Convertible)	19.3111	3.9070	98.6000	99.3500	98.6000	98.5830	24/03/2023	71,000	71,492.29	98.5000	B	27/03/2023	97.5523	99.8000
90,000	1,000.00	1,000.00	3.00	11/05/2023	5	---	10	---	1	CORAL A.E. (Non Convertible)	11.5000	11.0150	98.8101	98.8101	98.8101	99.4200	16/03/2023	1,000	999.60	99.1200	B	27/03/2023	98.8101	100.2000
20,148	1,000.00	1,000.00	4.95	26/06/2023	5	---	10	---	1	B&F COMM. & GARM. INDUS. S.A. (Non Convertible)	12.6500	3.9970	---	---	---	100.0000	20/03/2023	---	---	98.5001	B	27/03/2023	99.0571	100.6899

Corporate Bonds Notes

Transactions Volume = (Pieces) * (Nominal Price). Transactions Value = (Pieces) * (Nominal Price) * (price %) + (Accrued interest).
The price of a Bond is stated as a percentage (%) of Bond's Nominal Price.
Nominal Price in Euros (€), except if it is noted differently.

Non Convertible Corporate Bonds - Regulated Market

Num Listed Bonds	Nominal price	Issue price	Today's Rate	Exp. Date	Duration (years)	Note	Coupon		Trading Unit	Corporate Bonds	Accrued Int.	Yield.T.Mat	Price min	Price max	Closing price	Previous closing price/date	Volume	Transactions Value	Last order		ear min	Year max
							Common	Preferred											Price	Buy / Sell		
120,000	1,000.00	1,000.00	2.65	06/12/2028	7	---	3	---	1	NOVAL PROPERTY REIC (Non Convertible)	8.3181	5.5750	86.0000	86.5000	86.3594	86.3720 24/03/2023	67,000	58,418.09	86.5000	B	27/03/2023	84.3700 90.8700

Corporate Bonds Notes

Transactions Volume = (Pieces) * (Nominal Price). Transactions Value = (Pieces) * (Nominal Price) * (price %) + (Accrued interest).
The price of a Bond is stated as a percentage (%) of Bond's Nominal Price.
Nominal Price in Euros (€), except if it is noted differently.

Government Bonds

Number Listed Bonds	Nominal price	Today's Rate	Accrued Interest Calc	Exp. Date [1]	Duration (years)	Note	Coupons Date	Curr. coupon value	Trading Unit	Government Bonds	Price min	Price max	Closing price	Previous closing price/date	Volume	Transactions Value	Price	Last order Buy / Sell	Date
4,500,000	1,000.00	1.88	Actual/Actual	04/02/2035	15	---	04/02	1.88	1	GGB-FXD-040235-15Y-1.875-1.000	---	---	---	---	---	---	---	---	---
2,500,000	1,000.00	3.45	Actual/Actual	02/04/2024	5	---	02/04	3.45	1	GGB-FXD-020424-05Y-3.450-1.000	---	---	---	---	---	---	---	---	---
6,000,000	1,000.00	0.75	Actual/Actual	18/06/2031	10	---	18/06	0.75	1	GGB-FXD-180631-10Y-0.750-1.000	---	---	---	---	---	---	---	---	---
5,962,747,327	1.00	3.75	Actual/Actual	30/01/2028	10	---	/02 - 01/02 - 31/	3.75	1	GGB-FXD-300128-10Y-3.750-1.00	---	---	---	85.4610 13/07/2018	---	---	1.0000	B	28/11/2018
7,067,309,386	1.00	3.90	Actual/Actual	30/01/2033	15	---	/02 - 01/02 - 31/	3.90	1	GGB-FXD-300133-15Y-3.900-1.00	---	---	---	78.6730 13/07/2018	---	---	1.0000	B	28/11/2018
5,472,848,349	1.00	4.00	Actual/Actual	30/01/2037	19	---	/02 - 01/02 - 31/	4.00	1	GGB-FXD-300137-19Y-4.000-1.00	---	---	---	77.0370 13/07/2018	---	---	1.0000	B	28/11/2018
5,276,770,669	1.00	4.20	Actual/Actual	30/01/2042	24	---	/02 - 01/02 - 31/	4.20	1	GGB-FXD-300142-24Y-4.200-1.00	---	---	---	77.7640 13/07/2018	---	---	1.0000	B	28/11/2018
48,794,718	1.00	4.30	Actual/Actual	24/02/2024	12	---	24/02	4.30	1	GGB-FXD-240224-12Y-2.000-1.00	---	---	---	10.0000 22/06/2015	---	---	---	---	---
40,248,141	1.00	4.30	Actual/Actual	24/02/2025	13	---	24/02	4.30	1	GGB-FXD-240225-13Y-2.000-1.00	---	---	---	10.0000 22/06/2015	---	---	---	---	---
59,586,043	1.00	4.30	Actual/Actual	24/02/2026	14	---	24/02	4.30	1	GGB-FXD-240226-14Y-2.000-1.00	---	---	---	10.0000 22/06/2015	---	---	---	---	---
41,118,344	1.00	4.30	Actual/Actual	24/02/2027	15	---	24/02	4.30	1	GGB-FXD-240227-15Y-2.000-1.00	---	---	---	10.0000 22/06/2015	---	---	---	---	---
45,137,734	1.00	4.30	Actual/Actual	24/02/2028	16	---	24/02	4.30	1	GGB-FXD-240228-16Y-2.000-1.00	---	---	---	10.0000 22/06/2015	---	---	---	---	---
61,768,888	1.00	4.30	Actual/Actual	24/02/2029	17	---	24/02	4.30	1	GGB-FXD-240229-17Y-2.000-1.00	---	---	---	10.0000 22/06/2015	---	---	---	---	---
54,567,744	1.00	4.30	Actual/Actual	24/02/2030	18	---	24/02	4.30	1	GGB-FXD-240230-18Y-2.000-1.00	---	---	---	10.0000 22/06/2015	---	---	---	---	---
37,541,515	1.00	4.30	Actual/Actual	24/02/2031	19	---	24/02	4.30	1	GGB-FXD-240231-19Y-2.000-1.00	---	---	---	10.0000 22/06/2015	---	---	---	---	---
37,558,317	1.00	4.30	Actual/Actual	24/02/2032	20	---	24/02	4.30	1	GGB-FXD-240232-20Y-2.000-1.00	---	---	---	10.0000 22/06/2015	---	---	---	---	---
37,473,732	1.00	4.30	Actual/Actual	24/02/2033	21	---	24/02	4.30	1	GGB-FXD-240233-21Y-2.000-1.00	---	---	---	10.0000 22/06/2015	---	---	---	---	---
33,888,293	1.00	4.30	Actual/Actual	24/02/2034	22	---	24/02	4.30	1	GGB-FXD-240234-22Y-2.000-1.00	---	---	---	10.0000 22/06/2015	---	---	---	---	---
35,177,800	1.00	4.30	Actual/Actual	24/02/2035	23	---	24/02	4.30	1	GGB-FXD-240235-23Y-2.000-1.00	---	---	---	10.0000 22/06/2015	---	---	---	---	---
35,547,268	1.00	4.30	Actual/Actual	24/02/2036	24	---	24/02	4.30	1	GGB-FXD-240236-24Y-2.000-1.00	---	---	---	10.0000 22/06/2015	---	---	---	---	---
40,246,306	1.00	4.30	Actual/Actual	24/02/2037	25	---	24/02	4.30	1	GGB-FXD-240237-25Y-2.000-1.00	---	---	---	10.0000 22/06/2015	---	---	---	---	---
37,643,952	1.00	4.30	Actual/Actual	24/02/2038	26	---	24/02	4.30	1	GGB-FXD-240238-26Y-2.000-1.00	---	---	---	10.0000 22/06/2015	---	---	---	---	---
36,977,100	1.00	4.30	Actual/Actual	24/02/2039	27	---	24/02	4.30	1	GGB-FXD-240239-27Y-2.000-1.00	---	---	---	10.0000 22/06/2015	---	---	---	---	---
41,615,000	1.00	4.30	Actual/Actual	24/02/2040	28	---	24/02	4.30	1	GGB-FXD-240240-28Y-2.000-1.00	---	---	---	10.0000 22/06/2015	---	---	---	---	---
42,227,208	1.00	4.30	Actual/Actual	24/02/2041	29	---	24/02	4.30	1	GGB-FXD-240241-29Y-2.000-1.00	---	---	---	10.0000 22/06/2015	---	---	---	---	---
68,288,487	1.00	4.30	Actual/Actual	24/02/2042	30	---	24/02	4.30	1	GGB-FXD-240242-30Y-2.000-1.00	---	---	---	10.0000 22/06/2015	---	---	---	---	---
4,000,000	1,000.00	3.88	Actual/Actual	12/03/2029	10	---	12/03	3.88	1	GGB-FXD-120329-10Y-3.875-1.000	---	---	---	---	---	---	100.0000	B	15/10/2019
4,500,000	1,000.00	0.00	Actual/Actual	12/02/2026	5	---	12/02	0.00	1	GGB-FXD-120226-05Y-0.000-1.000	---	---	---	---	---	---	---	---	---
3,000,000	1,000.00	3.38	Actual/Actual	15/02/2025	7	---	15/02	3.38	1	GGB-FXD-150225-07Y-3.375-1.000	---	---	---	---	---	---	---	---	---
964,000	1,000.00	3.25	Actual/Actual	20/03/2025	6	---	20/03	3.25	1	GGB-FXD-200325-06Y-3.250-1.000	---	---	---	---	---	---	---	---	---
2,100,000	1,000.00	3.55	Actual/Actual	20/03/2026	7	---	20/03	3.55	1	GGB-FXD-200326-07Y-3.550-1.000	---	---	---	---	---	---	---	---	---
40,000	1,000.00	2.18	FLR Actual/360	16/09/2023	1	---	16/03 - 16/09	---	1	GGB-FLT-160923-01Y-2.178-1.000	---	---	---	---	---	---	---	---	---
5,500,000	1,000.00	1.50	Actual/Actual	18/06/2030	10	---	18/06	1.50	1	GGB-FXD-180630-10Y-1.500-1.000	---	---	---	---	---	---	---	---	---
5,364,250	1,000.00	3.25	Actual/Actual	20/03/2050	30	---	20/03	3.25	1	GGB-FXD-200350-30Y-3.250-1.000	---	---	---	---	---	---	---	---	---
3,924,361	1,000.00	2.00	Actual/Actual	22/04/2027	7	---	22/04	2.00	1	GGB-FXD-220427-07Y-2.000-1.000	---	---	---	---	---	---	99.9000	B	22/04/2020

Government Bonds Notes

Transactions Volume = (Pieces) * (Nominal Price). Transactions Value = (Pieces) * (Nominal Price) * (price %) + (Accrued interest).

The Value of current coupon for the issues with NV 0.01 euro refers to NV 100 euros

FLR: Floating Interest Rate.

[1] - The Expiration Date of the interest bearing period and the Date for coupon payment.

Government Bonds

Number Listed Bonds	Nominal price	Today's Rate	Accrued Interest Calc	Exp. Date [1]	Duration (years)	Note	Coupons Date	Curr. coupon value	Trading Unit	Government Bonds	Price min	Price max	Closing price	Previous closing price/date	Volume	Transactions Value	Price	Last order Buy / Sell	Date
2,500,000	1,000.00	1.88	Actual/Actual	23/07/2026	7	---	23/07	1.88	1	GGB-FXD-230726-07Y-1.875-1.000	---	---	---	---	---	---	---	---	---
3,500,000	1,000.00	4.25	Actual/Actual	15/06/2033	10	---	15/06	4.25	1	GGB-FXD-150633-10Y-4.250-1.000	---	---	---	---	---	---	---	---	---
3,500,000	1,000.00	1.88	Actual/Actual	24/01/2052	30	---	24/01	1.88	1	GGB-FXD-240152-30Y-1.875-1.000	---	---	---	---	---	---	---	---	---
3,700,000	1,000.00	1.75	Actual/Actual	18/06/2032	10	---	18/06	1.75	1	GGB-FXD-180632-10Y-1.750-1.000	---	---	---	---	---	---	---	---	---
2,200,000	1,000.00	1.13	FLR Actual/360	15/12/2027	5	---	- 15/12 - 15/03 -	---	1	GGB-FLT-151227-05Y-1.130-1.000	---	---	---	---	---	---	102.1600	B	30/12/2022

Government Bonds Notes

Transactions Volume = (Pieces) * (Nominal Price). Transactions Value = (Pieces) * (Nominal Price) * (price %) + (Accrued interest).
The Value of current coupon for the issues with NV 0.01 euro refers to NV 100 euros
FLR: Floating Interest Rate.
[1] - The Expiration Date of the interest bearing period and the Date for coupon payment.

Treasury Bills & Zero Coupon Government Bonds

	13-Week Maturity									26-Week Maturity								52-Week Maturity									
Issue Date	Exp. Date	Initial Rate	Num Listed Bonds	Nominal price	Issue price	Last Trade Price	Last Trade Date	Volume Traded	Note	Exp. Date	Initial Rate	Num Listed Bonds	Nominal price	Issue price	Last Trade Price	Last Trade Date	Volume Traded	Note	Exp. Date	Initial Rate	Num Listed Bonds	Nominal price	Issue price	Last Trade Price	Last Trade Date	Volume Traded	Note
10/06/2022	---	---	---	---	---	---	---	---	---	---	---	---	---	---	---	---	---	---	09/06/2023	0.83	1,600,000	1,000.00	991.68	---	---	---	---
09/09/2022	---	---	---	---	---	---	---	---	---	---	---	---	---	---	---	---	---	---	08/09/2023	1.97	1,000,000	1,000.00	980.47	---	---	---	---
09/12/2022	---	---	---	---	---	---	---	---	---	---	---	---	---	---	---	---	---	---	08/12/2023	2.73	600,000	1,000.00	973.10	---	---	---	---
10/03/2023	---	---	---	---	---	---	---	---	---	---	---	---	---	---	---	---	---	---	08/03/2024	3.75	1,000,000	1,000.00	963.46	---	---	---	---

Bonds in Circulation	Currency / Min nominal traded Value	Coupons Payment Date	Current Coupon Value	Note	Coupon	Trading Unit	Issue Date	Duration (years)	Today's Interest	A.I.C in days	Bonds	Last price of previous days		Last Outcry in Cash (euro)			Trades in Pieces	Life min	Life Max
												Price	Buy / Sell	Date					
Corporate Bonds in Foreign Currency and Euro																			
103,746	GBP / 10	01/12	0.25	---	64	1	01/12/1930	98	2.5	360	National Mortgage Bank	2.27	05/02/1996	2.27	S	05/02/1996	---	2.27	2.27
0	GBP / 10	01/12	0.25	---	66	1	01/12/1928	100	2.5	360	National Mortgage Bank	---	---	---	---	---	---	---	---

Government Bonds Notes

A.I.C: Accrued Interest Calculation base.
FLR: Floating Interest Rate.
The minimum tradeable Nominal Value for all Demeterialised Government Titles is 100 Euros.
(μτφρ-0)

Athex & ATHEXClear Members List

Member Name			Stock Market			Derivatives Market		ATHEXClear Member	
Address	Phone	Fax	Market Member	Remote Member	Market Maker	Proprietary	Market Maker	General Clearing	Direct Clearing
A. SARRIS SECURITIES S.A.			a						
6, ΔΡΑΓΑΤΣΑΝΙΟΥ 6 ΑΘΗΝΑ	2103367700								
AEONIC SECURITIES C.I.F. P.L.C.			a						
, ΛΑΪΟΥ 6, ΓΡ. 301B, ANNA COURT	35725337600								
ALPHA BANK S.A.								a	
, ΣΤΑΔΙΟΥ 40 ΑΘΗΝΑ	2103260000								
ALPHA FINANCE INVESTMENT SERVICES SINGLE MEMBER SA			a		a	a	a		a
5, ΠΑΝΕΠΙΣΤΗΜΙΟΥ 45 ΑΘΗΝΑ	2103677400								
ARGUS STOCKBROKERS LTD			a	a		a			
25 , 25 ΛΕΩΦΟΡΟΣ ΔΗΜΟΣΘΕΝΗ ΣΕΒΕΡΗ	0035722717000								
ATLANTIC SECURITIES LTD			a	a					
37, ΠΡΟΔΡΟΜΟΥ 37	0035722445400								
AXON SECURITIES S.A.			a			a			
48, ΣΤΑΔΙΟΥ 48 ΑΘΗΝΑ	2103363800								
BETA SECURITIES S.A.			a		a	a			a
29 , Λ.ΑΛΕΞΑΝΔΡΑΣ 29 ΑΘΗΝΑ	2106478930								
BNP PARIBAS S.A.								a	
, ΛΑΜΨΑΚΟΥ 2 ΑΘΗΝΑ	2107468525								
BOFA SECURITIES EUROPE SA			a	a					
, 112 AVENUE KL?BER 75116	+33 153655555								
CAPITAL SECURITIES S.A.			a			a			
58, ΜΗΤΡΟΠΟΛΕΩΣ 58 ΑΘΗΝΑ	2103369700								
CITIGROUP GLOBAL MARKETS EUROPE AG			a	a					
16, REUTERWEG 16	+49 691366-0								
CITIGROUP GLOBAL MARKETS LIMITED			a						
1, 33 CANADA SQUARE -CANARY WHARF	+44 02079864000								
CREDIT SUISSE BANK (EUROPE), S.A.			a	a					
, CALLE AYALA 42, 3A PLANTA-B MADRID	+34917916000								
CREDIT SUISSE SECURITIES (EUROPE) LIMITED			a						
1 , ONE CABOT SQUARE LONDON	+44 2078888888								
CYCLOS SECURITIES S.A.			a			a			
39, ΧΑΡΙΛΑΟΥ ΤΡΙΚΟΥΠΗ 6-8-10 ΑΘΗΝΑ	2103364300								
DEUTSCHE BANK S.A.				a					
1 , GREAT WINCHESTER STREET LONDON	+44 20 754 54209	00441133361437							
EUROBANK EQUITIES INVESTMENT FIRM SINGLE MEMBER SA			a		a	a	a		a
, ΦΙΛΕΛΛΗΝΩΝ 10 & ΞΕΝΟΦΩΝΤΟΣ 13 ΑΘΗΝΑ	2103720425								
EUROBANK S.A.								a	
, ΟΘΩΝΟΣ 8 ΑΘΗΝΑ	2103337000								
EUROCORP INVESTMENT SERVICES S.A.			a			a			a
14, ΠΛ.ΦΙΛΙΚΗΣ ΕΤΑΙΡΕΙΑΣ 14 ΑΘΗΝΑ	2107263600								
EUROTRUST INVESTMENT FIRM SA			a						
113, ΣΕΒΑΣΤΟΥΠΟΛΕΩΣ 113 ΑΘΗΝΑ	2103363100								
EUROXX SECURITIES S.A.			a		a	a	a		a
7, ΠΑΛΑΙΟΛΟΓΟΥ ΧΑΛΑΝΔΡΙ	(210)-6879400	(210)-6879401							
7, ΠΑΛΕΟΛΟΓΟΥ ΧΑΛΑΝΔΡΙ	+30 2106879400	210-6879401							
G. A. PERVANAS SECURITIES- INVESTMENT SERVICES S.A.			a						
7-9, ΣΟΦΟΚΛΕΟΥΣ 7-9 ΑΘΗΝΑ	2103727200								
GLOBAL CAPITAL SECURITIES & FINANCIAL SERVICES LTD			a	a					
50, ΛΑΡΧΙΕΠΙΣΚΟΠΟΥ ΜΑΚΑΡΙΟΥ Γ'50	0035722710710								
HELLENIC AMERICAN SECURITIES S.A.			a		a	a			a
27, ΑΝΔΡΕΑ ΠΑΠΑΝΔΡΕΟΥ 27 MAROUSI	2103311100								
HELLENIC BANK (INVESTMENTS) LTD				a					
, AVE.KYRIAKOU MATSI 31 - PO BOX 24747 NICOSIA	+357 22500100	357 22500110							
HSBC CONTINENTAL EUROPE								a	
109-111, Λ.ΜΕΣΟΓΕΙΩΝ 109-111	2106960000								
INDEX SECURITIES S.A.			a						
6, ΔΡΑΓΑΤΣΑΝΙΟΥ 6 ΑΘΗΝΑ	2103213920								
J. CHR. MAVRIKIS SECURITIES S.A.			a						
5, ΣΟΦΟΚΛΕΟΥΣ 5 ΑΘΗΝΑ	2103216730								
KAPPA SECURITIES S.A.			a			a			
15, ΒΑΛΑΩΡΙΤΟΥ 15 ΑΘΗΝΑ	2103678600								

Athex & ATHEXClear Members List

Member Name			Stock Market			Derivatives Market		ATHEXClear Member	
Address	Phone	Fax	Market Member	Remote Member	Market Maker	Proprietary	Market Maker	General Clearing	Direct Clearing
KARAMANOF SECURITIES & INVESTMENT SERVICES S.A.			a						
2, ΠΛΑΓ.ΘΕΟΔΩΡΩΝ 2 ATHINA	2103212947								
LAIKI FINANCIAL SERVICES LTD			a						
26, AVE. VYRONOS NICOSIA	357 22367367	357 22718567							
LEON DEPOLAS SECURITIES S.A.			a		a	a			
1, ΧΡΗΣΤΟΥ ΛΑΔΑ 1 ATHINA	2103213276 -28								
MEGA EQUITY SECURITIES & FINANCIAL SERVICES PUBLIC LTD			a	a		a			
42-44, ΛΕΩΦ.ΓΡΙΒΑ ΔΙΓΕΝΗ 42-44	0035722711711								
MERIT SECURITIES S.A			a		a	a			a
5, ΣΟΦΟΚΛΕΟΥΣ 5 ATHINA	2103671880								
MERRILL LYNCH INTERNATIONAL			a						
2 , 2 KING EDWARD STREET LONDON	+44 20276281000								
N. CHRYSOCHOIDIS SECURITIES S.A.			a			a			a
7-9, ΣΟΦΟΚΛΕΟΥΣ 7-9 ATHINA	2103213913								
NATIONAL BANK OF GREECE S.A.			a			a		a	
86, ΑΙΟΛΟΥ STR. ATHINA	(210)-3341000	(210)-3228187							
68, ΑΚΑΔΙΜΙΑΣ STR. ATHINA	(210)-3328817	(210)-3328678							
NATIONAL SECURITIES SINGLE MEMBER SA			a		a	a	a		
66, ΛΕΩΦΟΡΟΣ ΑΘΗΝΩΝ 128-132 & ΙΦΙΓΕΝΙΑΣ ATHINA	2103328784								
NUNTIUS BROKERAGE AND INVESTMENT SERVICES S.A			a						
6, ΔΡΑΓΑΤΣΑΝΙΟΥ 6 ATHINA	2103350599								
ONE PLUS CAPITAL LIMITED			a	a					
, 75 PRODROMOU AVENUE NICOSIA 1307	35722873760								
OPTIMA BANK S.A.			a		a	a	a	a	
32 , ΑΙΓΙΛΑΕΙΑΣ 32 & ΠΑΡΑΔΕΙΣΟΥ MAROUSI	2108173663								
PANTELAKIS SECURITIES S.A.			a		a	a	a		
57, ΕΘΝΙΚΗΣ ΑΝΤΙΣΤΑΣΕΩΣ 57, ΚΤΙΠΙΟ Β CHALANDRI	2106965000								
PEGASUS SECURITIES S.A			a			a			
17 , ΒΑΛΑΩΡΙΤΟΥ 17 & ΑΜΕΡΙΚΗΣ ATHINA	2103670700								
PIRAEUS BANK S.A.			a			a		a	
, ΑΜΕΡΙΚΗΣ 4 ATHINA	2103335000								
PIRAEUS SECURITIES S. A.			a		a	a	a		a
10, ΣΤΑΔΙΟΥ 10 ATHINA	2103354100								
PROCHOICE SECURITIES LTD			a	a					
57, ΛΕΩΦ.ΣΠΥΡΟΥ ΚΥΠΡΙΑΝΟΥ 57, ΑΚΙΝΗΤΑ Φ	035724661192								
SHARELINK SECURITIES & FINANCIAL SERVICES LTD			a			a			
6 , HOUSE-ΘΕΟΤΟΚΗ 6 ΜΕΓΑΡΟ ΕΛΛΗΝΑ	+357 22554200								
SOCIETE GENERALE S.A.			a	a		a			
, 17 COURS VALMY, CEDEX	+157290504								
SOLIDUS SECURITIES S.A			a			a			a
64, ΛΟΥΙΖΗΣ ΠΙΑΝΚΟΥΡ 64 ATHINA	2106900600								
ST. EM. LAVRENTAKIS SECURITIES S.A.			a			a			
7-9, ΣΟΦΟΚΛΕΟΥΣ 7-9 ATHINA	2103213336								
THE CYPRUS INVESTMENT & & SECURITIES CORPORATION LTD			a	a					
154, ΑΓΙΟΥ ΠΡΟΚΟΠΙΟΥ & ΠΟΣΕΙΔΩΝΟΣ 1	0035722121700								
UBS EUROPE SE			a	a					
, OPERNTURM, BOCKENHEIMER LANDSTRASSE 2-4	496921790								
UBS LIMITED			a						
1 , FINSBURY AVENUE LONDON	+44 2075687135								

List of Stocks under Market Making operations

Securities	Stock Category
Market Maker	Start Market Making
MLS MULTIMEDIA SA (CR)	Suspension Status
PIRAEUS SECURITIES S. A.	01/08/2019
ALPHA ETF FTSE Athex Large Cap	Exchange Traded Funds (ETFs)
ALPHA FINANCE INVESTMENT SERVICES SINGLE MEMBER SA	02/01/1900
NATIONAL SECURITIES SINGLE MEMBER SA	02/01/1900
ADMIE (IPTO) HOLDING S.A. (CR)	Main Market
EUROBANK EQUITIES INVESTMENT FIRM SINGLE MEMBER SA	24/05/2021
HELLENIC AMERICAN SECURITIES S.A.	09/03/2020
PIRAEUS SECURITIES S. A.	29/06/2017
AEGEAN AIRLINES (CR)	Main Market
EUROBANK EQUITIES INVESTMENT FIRM SINGLE MEMBER SA	22/09/2020
ALPHA SERVICES HOLD (CR)	Main Market
ALPHA FINANCE INVESTMENT SERVICES SINGLE MEMBER SA	29/02/2016
EUROBANK EQUITIES INVESTMENT FIRM SINGLE MEMBER SA	22/10/2006
HELLENIC AMERICAN SECURITIES S.A.	25/07/2014
LEON DEPOLAS SECURITIES S.A.	04/01/2016
MERIT SECURITIES S.A	03/09/2012
NATIONAL SECURITIES SINGLE MEMBER SA	02/01/1900
PIRAEUS SECURITIES S. A.	28/05/2009
ALPHA TRUST (CR)	Main Market
EUROBANK EQUITIES INVESTMENT FIRM SINGLE MEMBER SA	06/02/2023
LEON DEPOLAS SECURITIES S.A.	04/01/2021
ANDROMEDA SA (CR)	Main Market
BETA SECURITIES S.A.	15/02/2021
ATTICA BANK S.A. (CR)	Main Market
EUROXX SECURITIES S.A.	22/01/2016
PIRAEUS SECURITIES S. A.	20/09/2017
AUSTRIACARD (CB)	Main Market
BETA SECURITIES S.A.	23/03/2023
AUTOHELLAS SA (CR)	Main Market
ALPHA FINANCE INVESTMENT SERVICES SINGLE MEMBER SA	01/07/2019
EUROXX SECURITIES S.A.	02/07/2018
AVAX S.A. (CR)	Main Market
EUROBANK EQUITIES INVESTMENT FIRM SINGLE MEMBER SA	14/12/2015
PIRAEUS SECURITIES S. A.	01/02/2021
AVE (CR)	Main Market
EUROXX SECURITIES S.A.	05/06/2020
BRIQ PROPERTIES (CR)	Main Market
EUROBANK EQUITIES INVESTMENT FIRM SINGLE MEMBER SA	09/09/2019
LEON DEPOLAS SECURITIES S.A.	22/02/2021
CC HBC AG (CR)	Main Market
BETA SECURITIES S.A.	08/03/2021
NATIONAL SECURITIES SINGLE MEMBER SA	02/01/1900
PIRAEUS SECURITIES S. A.	04/05/2015
CENERGY HOLDINGS (CB)	Main Market
ALPHA FINANCE INVESTMENT SERVICES SINGLE MEMBER SA	02/01/2016
EUROBANK EQUITIES INVESTMENT FIRM SINGLE MEMBER SA	02/01/2016
OPTIMA BANK S.A.	14/03/2022
PANTELAKIS SECURITIES S.A.	27/12/2022
CNL CAPITAL (CR)	Main Market
MERIT SECURITIES S.A	01/10/2018
DIMAND (CR)	Main Market
ALPHA FINANCE INVESTMENT SERVICES SINGLE MEMBER SA	08/08/2022
EUROBANK EQUITIES INVESTMENT FIRM SINGLE MEMBER SA	08/08/2022
EKTER SA (CR)	Main Market
BETA SECURITIES S.A.	26/09/2022
EUROBANK EQUITIES INVESTMENT FIRM SINGLE MEMBER SA	16/10/2017
LEON DEPOLAS SECURITIES S.A.	21/05/2018
ELASTRON (CR)	Main Market
LEON DEPOLAS SECURITIES S.A.	20/02/2017
ELLAKTOR (CR)	Main Market
ALPHA FINANCE INVESTMENT SERVICES SINGLE MEMBER SA	18/03/2019
EUROBANK EQUITIES INVESTMENT FIRM SINGLE MEMBER SA	01/06/2012
EUROXX SECURITIES S.A.	24/09/2018
NATIONAL SECURITIES SINGLE MEMBER SA	02/01/1900
PIRAEUS SECURITIES S. A.	22/10/2018

List of Stocks under Market Making operations

Securities	Stock Category
Market Maker	Start Market Making
ELTON SA (CR)	Main Market
BETA SECURITIES S.A.	03/09/2012
EUROBANK EQUITIES INVESTMENT FIRM SINGLE MEMBER SA	28/11/2022
OPTIMA BANK S.A.	30/01/2023
ELVALHALCOR (CR)	Main Market
ALPHA FINANCE INVESTMENT SERVICES SINGLE MEMBER SA	07/05/2018
BETA SECURITIES S.A.	09/01/2023
EUROBANK EQUITIES INVESTMENT FIRM SINGLE MEMBER SA	07/05/2018
ENTERSOFT (CR)	Main Market
ALPHA FINANCE INVESTMENT SERVICES SINGLE MEMBER SA	23/03/2023
EUROBANK EQUITIES INVESTMENT FIRM SINGLE MEMBER SA	22/06/2020
EUROBANK HOLDINGS (CR)	Main Market
ALPHA FINANCE INVESTMENT SERVICES SINGLE MEMBER SA	09/01/2006
EUROBANK EQUITIES INVESTMENT FIRM SINGLE MEMBER SA	01/06/2012
HELLENIC AMERICAN SECURITIES S.A.	25/07/2014
LEON DEPOLAS SECURITIES S.A.	30/11/2018
MERIT SECURITIES S.A.	06/11/2017
NATIONAL SECURITIES SINGLE MEMBER SA	02/01/1900
PIRAEUS SECURITIES S. A.	28/09/2009
EUROCONSULTANTS S.A. (CR)	Main Market
OPTIMA BANK S.A.	01/02/2023
EYDAP S.A. (CR)	Main Market
ALPHA FINANCE INVESTMENT SERVICES SINGLE MEMBER SA	27/01/2020
EUROBANK EQUITIES INVESTMENT FIRM SINGLE MEMBER SA	10/06/2019
FOURLIS (CR)	Main Market
EUROBANK EQUITIES INVESTMENT FIRM SINGLE MEMBER SA	01/12/2016
PIRAEUS SECURITIES S. A.	06/03/2017
GEK TERNA (CR)	Main Market
BETA SECURITIES S.A.	08/03/2021
EUROBANK EQUITIES INVESTMENT FIRM SINGLE MEMBER SA	24/05/2021
PIRAEUS SECURITIES S. A.	29/08/2019
GR. SARANTIS S.A. (CR)	Main Market
BETA SECURITIES S.A.	14/05/2012
EUROBANK EQUITIES INVESTMENT FIRM SINGLE MEMBER SA	24/10/2016
HELLENIC EXCHANGES-A.S.E. (CR)	Main Market
HELLENIC AMERICAN SECURITIES S.A.	01/09/2014
NATIONAL SECURITIES SINGLE MEMBER SA	02/01/1900
PIRAEUS SECURITIES S. A.	04/05/2015
HELLENIQ ENERGY (CR)	Main Market
HELLENIC AMERICAN SECURITIES S.A.	14/09/2015
PIRAEUS SECURITIES S. A.	20/03/2017
IDEAL HOLDINGS (CR)	Main Market
EUROBANK EQUITIES INVESTMENT FIRM SINGLE MEMBER SA	07/06/2021
PIRAEUS SECURITIES S. A.	07/06/2021
INTERCONTINENTAL (CR)	Main Market
LEON DEPOLAS SECURITIES S.A.	03/06/2019
INTERLIFE G.C.I.(CR)	Main Market
BETA SECURITIES S.A.	24/10/2022
INTERWOOD-XYLEMPORIA (CR)	Main Market
EUROBANK EQUITIES INVESTMENT FIRM SINGLE MEMBER SA	05/07/2021
PANTELAKIS SECURITIES S.A.	01/07/2021
INTRAKAT (CR)	Main Market
PANTELAKIS SECURITIES S.A.	10/10/2022
JUMBO SA (CR)	Main Market
BETA SECURITIES S.A.	01/02/2021
EUROBANK EQUITIES INVESTMENT FIRM SINGLE MEMBER SA	25/05/2020
MERIT SECURITIES S.A.	06/11/2017
PIRAEUS SECURITIES S. A.	06/03/2017
KLOUKINAS - LAPPAS SA (CR)	Main Market
OPTIMA BANK S.A.	02/01/2023
KRI-KRI S.A. (CR)	Main Market
EUROBANK EQUITIES INVESTMENT FIRM SINGLE MEMBER SA	07/05/2018
LEON DEPOLAS SECURITIES S.A.	16/01/2017
LAMDA DEVELOPMENT SA (CR)	Main Market
EUROBANK EQUITIES INVESTMENT FIRM SINGLE MEMBER SA	08/12/2014
PANTELAKIS SECURITIES S.A.	06/11/2017
PIRAEUS SECURITIES S. A.	29/06/2017

List of Stocks under Market Making operations

Securities	Stock Category
Market Maker	Start Market Making
LAMPSA HOTEL SA (CR)	Main Market
LEON DEPOLAS SECURITIES S.A.	16/01/2017
MIG (CR)	Main Market
EUROBANK EQUITIES INVESTMENT FIRM SINGLE MEMBER SA	23/03/2015
PIRAEUS SECURITIES S. A.	02/02/2009
MOTOR OIL (CR)	Main Market
BETA SECURITIES S.A.	08/03/2021
EUROBANK EQUITIES INVESTMENT FIRM SINGLE MEMBER SA	22/10/2006
LEON DEPOLAS SECURITIES S.A.	01/04/2019
MERIT SECURITIES S.A	25/02/2019
NATIONAL SECURITIES SINGLE MEMBER SA	02/01/1900
PIRAEUS SECURITIES S. A.	04/05/2015
MPLE KEDROS (CR)	Main Market
MERIT SECURITIES S.A	30/09/2022
MYTILINEOS (CR)	Main Market
ALPHA FINANCE INVESTMENT SERVICES SINGLE MEMBER SA	15/04/2019
BETA SECURITIES S.A.	11/04/2022
EUROBANK EQUITIES INVESTMENT FIRM SINGLE MEMBER SA	20/09/2017
MERIT SECURITIES S.A	25/02/2019
NATIONAL SECURITIES SINGLE MEMBER SA	02/01/1900
PIRAEUS SECURITIES S. A.	04/05/2015
NATIONAL BANK (CR)	Main Market
ALPHA FINANCE INVESTMENT SERVICES SINGLE MEMBER SA	09/01/2006
EUROBANK EQUITIES INVESTMENT FIRM SINGLE MEMBER SA	22/10/2006
HELLENIC AMERICAN SECURITIES S.A.	25/07/2014
LEON DEPOLAS SECURITIES S.A.	20/05/2015
MERIT SECURITIES S.A	03/09/2012
NATIONAL SECURITIES SINGLE MEMBER SA	02/01/1900
PIRAEUS SECURITIES S. A.	08/09/2008
OPAP (CR)	Main Market
ALPHA FINANCE INVESTMENT SERVICES SINGLE MEMBER SA	09/01/2006
BETA SECURITIES S.A.	11/04/2022
EUROBANK EQUITIES INVESTMENT FIRM SINGLE MEMBER SA	22/10/2006
HELLENIC AMERICAN SECURITIES S.A.	25/07/2014
MERIT SECURITIES S.A	20/03/2017
NATIONAL SECURITIES SINGLE MEMBER SA	02/01/1900
PIRAEUS SECURITIES S. A.	04/05/2015
OTE (CR)	Main Market
ALPHA FINANCE INVESTMENT SERVICES SINGLE MEMBER SA	09/01/2006
BETA SECURITIES S.A.	11/04/2022
EUROBANK EQUITIES INVESTMENT FIRM SINGLE MEMBER SA	22/10/2006
HELLENIC AMERICAN SECURITIES S.A.	25/07/2014
LEON DEPOLAS SECURITIES S.A.	20/04/2015
MERIT SECURITIES S.A	20/03/2017
NATIONAL SECURITIES SINGLE MEMBER SA	02/01/1900
PIRAEUS SECURITIES S. A.	08/09/2008
P.P.A. S.A. (CR)	Main Market
EUROBANK EQUITIES INVESTMENT FIRM SINGLE MEMBER SA	06/02/2019
PAPOUTSANIS (CR)	Main Market
BETA SECURITIES S.A.	25/11/2013
PETROPOULOS PETROS (CR)	Main Market
EUROBANK EQUITIES INVESTMENT FIRM SINGLE MEMBER SA	01/04/2019
PANTELAKIS SECURITIES S.A.	16/03/2020
PIRAEUS FINANCIAL HOLD (CR)	Main Market
ALPHA FINANCE INVESTMENT SERVICES SINGLE MEMBER SA	15/04/2019
EUROBANK EQUITIES INVESTMENT FIRM SINGLE MEMBER SA	22/10/2006
EUROXX SECURITIES S.A.	15/02/2016
HELLENIC AMERICAN SECURITIES S.A.	25/07/2014
LEON DEPOLAS SECURITIES S.A.	30/11/2018
MERIT SECURITIES S.A	16/09/2013
NATIONAL SECURITIES SINGLE MEMBER SA	02/01/1900
PIRAEUS SECURITIES S. A.	16/02/2009

List of Stocks under Market Making operations

Securities	Stock Category
Market Maker	Start Market Making
PPC (CR)	Main Market
ALPHA FINANCE INVESTMENT SERVICES SINGLE MEMBER SA	09/01/2006
BETA SECURITIES S.A.	01/02/2021
EUROBANK EQUITIES INVESTMENT FIRM SINGLE MEMBER SA	22/10/2006
HELLENIC AMERICAN SECURITIES S.A.	01/09/2014
MERIT SECURITIES S.A	06/11/2017
NATIONAL SECURITIES SINGLE MEMBER SA	02/01/1900
PIRAEUS SECURITIES S. A.	28/09/2009
PREMA (CR)	Main Market
BETA SECURITIES S.A.	01/06/2021
LEON DEPOLAS SECURITIES S.A.	05/12/2022
PANTELAKIS SECURITIES S.A.	23/12/2021
PROFILE SA (CR)	Main Market
PANTELAKIS SECURITIES S.A.	01/07/2019
QUALITY & RELIABILITY SA (CR)	Main Market
OPTIMA BANK S.A.	03/01/2023
QUEST HOLDINGS (CR)	Main Market
BETA SECURITIES S.A.	26/03/2018
EUROBANK EQUITIES INVESTMENT FIRM SINGLE MEMBER SA	28/01/2019
SIDMA STEEL (CR)	Main Market
LEON DEPOLAS SECURITIES S.A.	06/06/2022
SPACE HELLAS SA (CR)	Main Market
MERIT SECURITIES S.A	09/12/2022
TECHNICAL OLYMPIC SA (CR)	Main Market
BETA SECURITIES S.A.	04/04/2022
TERNA ENERGY (CR)	Main Market
EUROBANK EQUITIES INVESTMENT FIRM SINGLE MEMBER SA	24/05/2021
PIRAEUS SECURITIES S. A.	09/12/2019
THRACE PLASTICS SA (CR)	Main Market
ALPHA FINANCE INVESTMENT SERVICES SINGLE MEMBER SA	26/03/2018
EUROBANK EQUITIES INVESTMENT FIRM SINGLE MEMBER SA	26/03/2018
TITAN CEMENT (CB)	Main Market
BETA SECURITIES S.A.	01/02/2021
EUROBANK EQUITIES INVESTMENT FIRM SINGLE MEMBER SA	06/11/2019
PIRAEUS SECURITIES S. A.	18/01/2021
TZIRAKIAN PROFIL (CR)	Main Market
LEON DEPOLAS SECURITIES S.A.	19/07/2021
VIOHALCO SA/NV (CB)	Main Market
ALPHA FINANCE INVESTMENT SERVICES SINGLE MEMBER SA	11/03/2008
EUROBANK EQUITIES INVESTMENT FIRM SINGLE MEMBER SA	04/03/2014
MERIT SECURITIES S.A	17/03/2014

Underlying Asset				Derivatives Market													
Price max	Price min	Closing price	change	Delivery Month	Open price	Price max	Price min	Last price	Closing price	Last Bid	Last Ask	Fixing price*	Life high	Life low	Trades	Volume	Open Interest
FTSE/Athex Large Cap				(Trade Unit: 1 Index Point x 2€, Cash Settlement)													
2,508.95	2,464.63	2,503.00	1.56%	April 2023	2,480.00	2,506.00	2,465.50	2,500.00	2,500.00	---	---	---	2,774.00	---	239	736	4,737
				May 2023	2,472.00	2,500.00	2,468.75	2,500.00	2,500.00	---	---	---	2,610.75	---	18	80	191
				June 2023	---	---	---	---	2,476.25	---	---	---	---	---	---	---	---
				September 2023	---	---	---	---	2,488.50	---	---	---	---	---	---	---	---
				December 2023	---	---	---	---	2,501.00	---	---	---	---	---	---	---	---
				March 2024	---	---	---	---	2,513.50	---	---	---	---	---	---	---	---
FTSE/Athex Banks				(Trade Unit: 1 Index Point x 15€, Cash Settlement)													
757.51	736.22	755.28	2.59%	June 2023	753.00	757.75	753.00	756.00	756.00	---	---	---	845.50	---	4	35	852
				September 2023	---	---	---	---	743.50	---	---	---	---	---	---	---	---
				December 2023	---	---	---	---	747.00	---	---	---	---	---	---	---	---
				March 2024	---	---	---	---	750.75	---	---	---	---	---	---	---	---

Derivatives notes

Fixing prices and final open positions can be retrieved from the following path <http://www.helex.gr/el/web/guest/statistics-end-of-day-derivatives>

Underlying Asset				Derivatives Market													
Price max	Price min	Closing price	change	Delivery Month	Open price	Price max	Price min	Last price	Closing price	Last Bid	Last Ask	Fixing price*	Life high	Life low	Trades	Volume	Open Interest
ADMIE (IPTO) HOLDING S.A. (CR)				(Contract Size: 100 Securities, Physical Delivery)													
1.728	1.704	1.706	-0.23%	June 2023	1.73	1.73	1.72	1.72	1.72	---	---	---	1.92	---	3	26	13,176
				September 2023	---	---	---	---	1.73	---	---	---	---	---	---	---	---
				December 2023	---	---	---	---	1.74	---	---	---	---	---	---	---	---
				March 2024	---	---	---	---	1.74	---	---	---	---	---	---	---	---
AEGEAN AIRLINES (CR)				(Contract Size: 100 Securities, Physical Delivery)													
7.37	7.03	7.32	3.83%	June 2023	7.07	7.28	7.07	7.28	7.28	---	---	---	7.40	---	7	22	93
				September 2023	---	---	---	---	7.12	---	---	---	---	---	---	---	---
				December 2023	---	---	---	---	7.15	---	---	---	---	---	---	---	---
				March 2024	---	---	---	---	7.19	---	---	---	---	---	---	---	---
ALPHA SERVICES HOLD (CR)				(Contract Size: 100 Securities, Physical Delivery)													
1.13	1.1	1.12	2.75%	June 2023	1.12	1.14	1.10	1.13	1.13	---	---	---	1.52	---	215	7,444	120,252
				September 2023	---	---	---	---	1.13	---	---	---	1.25	---	---	---	4
				December 2023	---	---	---	---	1.11	---	---	---	---	---	---	---	---
				March 2024	---	---	---	---	1.11	---	---	---	---	---	---	---	---
AUTOHELLAS SA (CR)				(Contract Size: 100 Securities, Physical Delivery)													
12.24	11.94	12.22	2.00%	June 2023	11.34	11.67	11.34	11.67	11.67	---	---	---	12.38	---	2	6	127
				September 2023	---	---	---	---	12.10	---	---	---	---	---	---	---	---
				December 2023	---	---	---	---	12.16	---	---	---	---	---	---	---	---
				March 2024	---	---	---	---	12.22	---	---	---	---	---	---	---	---
AVAX S.A. (CR)				(Contract Size: 100 Securities, Physical Delivery)													
0.791	0.762	0.77	-0.26%	June 2023	---	---	---	---	0.786	---	---	---	0.863	---	---	---	305
				September 2023	---	---	---	---	0.780	---	---	---	---	---	---	---	---
				December 2023	---	---	---	---	0.783	---	---	---	---	---	---	---	---
				March 2024	---	---	---	---	0.787	---	---	---	---	---	---	---	---
CC HBC AG (CR)				(Contract Size: 100 Securities, Physical Delivery)													
25.17	24.72	25.12	1.62%	June 2023	24.91	25.00	24.90	25.00	25.00	---	---	---	25.00	---	5	54	570
				September 2023	---	---	---	---	24.96	---	---	---	---	---	---	---	---
				December 2023	---	---	---	---	25.09	---	---	---	---	---	---	---	---
				March 2024	---	---	---	---	25.21	---	---	---	---	---	---	---	---
CENERGY HOLDINGS (CB)				(Contract Size: 100 Securities, Physical Delivery)													
3.78	3.745	3.77	0.94%	June 2023	3.78	3.80	3.75	3.80	3.80	---	---	---	4.16	---	4	11	6,226
				September 2023	---	---	---	---	3.77	---	---	---	---	---	---	---	---
				December 2023	---	---	---	---	3.79	---	---	---	---	---	---	---	---
				March 2024	---	---	---	---	3.81	---	---	---	---	---	---	---	---

Derivatives notes

Fixing prices and final open positions can be retrieved from the following path <http://www.helex.gr/el/web/guest/statistics-end-of-day-derivatives>

Underlying Asset				Derivatives Market													
Price max	Price min	Closing price	change	Delivery Month	Open price	Price max	Price min	Last price	Closing price	Last Bid	Last Ask	Fixing price*	Life high	Life low	Trades	Volume	Open Interest
ELLAKTOR (CR)				(Contract Size: 100 Securities, Physical Delivery)													
2.15	2.075	2.1	-0.24%	June 2023	2.13	2.14	2.13	2.14	2.14	---	---	---	2.17	---	2	15	1,262
				September 2023	---	---	---	---	2.13	---	---	---	---	---	---	---	---
				December 2023	---	---	---	---	2.14	---	---	---	---	---	---	---	---
				March 2024	---	---	---	---	2.15	---	---	---	---	---	---	---	---
ELVALHALCOR (CR)				(Contract Size: 100 Securities, Physical Delivery)													
1.596	1.564	1.59	2.58%	June 2023	1.58	1.59	1.58	1.59	1.59	---	---	---	1.79	---	2	5	1,287
				September 2023	---	---	---	---	1.57	---	---	---	---	---	---	---	---
				December 2023	---	---	---	---	1.57	---	---	---	---	---	---	---	---
				March 2024	---	---	---	---	1.58	---	---	---	---	---	---	---	---
EUROBANK HOLDINGS (CR)				(Contract Size: 100 Securities, Physical Delivery)													
1.237	1.185	1.225	2.94%	June 2023	1.21	1.23	1.19	1.23	1.23	---	---	---	1.46	---	88	1,587	23,795
				September 2023	---	---	---	---	1.20	---	---	---	---	---	---	---	---
				December 2023	---	---	---	---	1.21	---	---	---	---	---	---	---	---
				March 2024	---	---	---	---	1.21	---	---	---	---	---	---	---	---
EYDAP S.A. (CR)				(Contract Size: 100 Securities, Physical Delivery)													
6.64	6.56	6.59	-0.15%	June 2023	6.61	6.61	6.61	6.61	6.61	---	---	---	6.95	---	1	2	543
				September 2023	---	---	---	---	6.39	---	---	---	6.83	---	---	---	---
				December 2023	---	---	---	---	6.70	---	---	---	---	---	---	---	---
				March 2024	---	---	---	---	6.73	---	---	---	---	---	---	---	---
FOURLIS (CR)				(Contract Size: 100 Securities, Physical Delivery)													
3.55	3.475	3.54	1.14%	June 2023	3.51	3.51	3.51	3.51	3.51	---	---	---	3.91	---	1	1	1,495
				September 2023	---	---	---	---	3.53	---	---	---	---	---	---	---	---
				December 2023	---	---	---	---	3.55	---	---	---	---	---	---	---	---
				March 2024	---	---	---	---	3.57	---	---	---	---	---	---	---	---
GEK TERNA (CR)				(Contract Size: 100 Securities, Physical Delivery)													
11.26	11	11.22	2.00%	June 2023	11.21	11.22	11.21	11.22	11.22	---	---	---	12.30	---	4	22	7,585
				September 2023	---	---	---	---	11.11	---	---	---	---	---	---	---	---
				December 2023	---	---	---	---	11.16	---	---	---	---	---	---	---	---
				March 2024	---	---	---	---	11.22	---	---	---	---	---	---	---	---
HELLENIC EXCHANGES-A.S.E. (CR)				(Contract Size: 100 Securities, Physical Delivery)													
4.1	3.98	4.04	0.00%	June 2023	3.92	3.92	3.91	3.91	3.91	---	---	---	4.19	---	2	2	1,889
				September 2023	---	---	---	---	4.08	---	---	---	---	---	---	---	---
				December 2023	---	---	---	---	4.10	---	---	---	---	---	---	---	---
				March 2024	---	---	---	---	4.12	---	---	---	---	---	---	---	---

Derivatives notes

Fixing prices and final open positions can be retrieved from the following path <http://www.helex.gr/el/web/guest/statistics-end-of-day-derivatives>

Underlying Asset				Derivatives Market													
Price max	Price min	Closing price	change	Delivery Month	Open price	Price max	Price min	Last price	Closing price	Last Bid	Last Ask	Fixing price*	Life high	Life low	Trades	Volume	Open Interest
HELLENiQ ENERGY (CR)				(Contract Size: 100 Securities, Physical Delivery)													
7.42	7.23	7.27	-0.14%	June 2023	7.44	7.44	7.36	7.43	7.43	---	---	---	8.08	---	4	18	1,475
				September 2023	---	---	---	---	7.35	---	---	---	---	---	---	---	---
				December 2023	---	---	---	---	7.39	---	---	---	---	---	---	---	---
				March 2024	---	---	---	---	7.42	---	---	---	---	---	---	---	---
INTRACOM HOLDINGS (CR)				(Contract Size: 100 Securities, Physical Delivery)													
1.858	1.83	1.84	1.21%	June 2023	---	---	---	---	1.84	---	---	---	2.07	---	---	---	4,198
				September 2023	---	---	---	---	1.84	---	---	---	---	---	---	---	---
				December 2023	---	---	---	---	1.84	---	---	---	---	---	---	---	---
				March 2024	---	---	---	---	1.85	---	---	---	---	---	---	---	---
INTRAKAT (CR)				(Contract Size: 100 Securities, Physical Delivery)													
1.63	1.564	1.63	3.82%	June 2023	1.59	1.65	1.58	1.65	1.65	---	---	---	1.79	---	39	379	6,199
				September 2023	---	---	---	---	1.59	---	---	---	---	---	---	---	---
				December 2023	---	---	---	---	1.59	---	---	---	---	---	---	---	---
				March 2024	---	---	---	---	1.60	---	---	---	---	---	---	---	---
JUMBO SA (CR)				(Contract Size: 100 Securities, Physical Delivery)													
19.33	18.58	19.2	2.84%	June 2023	18.93	19.28	18.93	19.20	19.20	---	---	---	20.77	---	8	17	326
				September 2023	---	---	---	---	18.85	---	---	---	---	---	---	---	---
				December 2023	---	---	---	---	18.95	---	---	---	---	---	---	---	---
				March 2024	---	---	---	---	19.04	---	---	---	---	---	---	---	---
LAMDA DEVELOPMENT SA (CR)				(Contract Size: 100 Securities, Physical Delivery)													
5.69	5.6	5.605	-0.80%	June 2023	5.66	5.71	5.65	5.71	5.71	---	---	---	6.53	---	9	14	5,255
				September 2023	---	---	---	---	5.70	---	---	---	---	---	---	---	---
				December 2023	---	---	---	---	5.73	---	---	---	---	---	---	---	---
				March 2024	---	---	---	---	5.76	---	---	---	---	---	---	---	---
MIG (CR)				(Contract Size: 100 Securities, Physical Delivery)													
0.2175	0.217	0.217	0.00%	June 2023	0.199	0.199	0.199	0.199	0.199	---	---	---	0.218	---	1	50	1,240
				September 2023	---	---	---	---	0.219	---	---	---	---	---	---	---	---
				December 2023	---	---	---	---	0.220	---	---	---	---	---	---	---	---
				March 2024	---	---	---	---	0.221	---	---	---	---	---	---	---	---
MOTOR OIL (CR)				(Contract Size: 100 Securities, Physical Delivery)													
22.6	21.98	22.36	1.09%	June 2023	22.22	22.46	22.20	22.22	22.22	---	---	---	25.05	---	18	43	322
				September 2023	---	---	---	---	22.34	---	---	---	---	---	---	---	---
				December 2023	---	---	---	---	22.45	---	---	---	---	---	---	---	---
				March 2024	---	---	---	---	22.56	---	---	---	---	---	---	---	---

Derivatives notes

Fixing prices and final open positions can be retrieved from the following path <http://www.helex.gr/el/web/guest/statistics-end-of-day-derivatives>

Underlying Asset				Derivatives Market													
Price max	Price min	Closing price	change	Delivery Month	Open price	Price max	Price min	Last price	Closing price	Last Bid	Last Ask	Fixing price*	Life high	Life low	Trades	Volume	Open Interest
MYTILINEOS (CR)				(Contract Size: 100 Securities, Physical Delivery)													
25.16	24.66	25.14	1.95%	June 2023	24.99	25.19	24.79	25.12	25.12	---	---	---	25.52	---	32	116	2,140
				September 2023	---	---	---	---	24.90	---	---	---	---	---	---	---	---
				December 2023	---	---	---	---	25.02	---	---	---	---	---	---	---	---
				March 2024	---	---	---	---	25.15	---	---	---	---	---	---	---	---
NATIONAL BANK (CR)				(Contract Size: 100 Securities, Physical Delivery)													
4.45	4.356	4.41	1.38%	June 2023	4.41	4.44	4.35	4.41	4.41	---	---	---	5.46	---	180	1,685	20,853
				September 2023	---	---	---	---	4.39	---	---	---	---	---	---	---	---
				December 2023	---	---	---	---	4.41	---	---	---	---	---	---	---	---
				March 2024	---	---	---	---	4.44	---	---	---	---	---	---	---	---
OPAP (CR)				(Contract Size: 100 Securities, Physical Delivery)													
14.87	14.67	14.8	1.37%	June 2023	---	---	---	---	13.85	---	---	---	15.00	---	---	---	1,870
				September 2023	---	---	---	---	14.74	---	---	---	---	---	---	---	---
				December 2023	---	---	---	---	14.82	---	---	---	---	---	---	---	---
				March 2024	---	---	---	---	14.89	---	---	---	---	---	---	---	---
OTE (CR)				(Contract Size: 100 Securities, Physical Delivery)													
13.27	13.03	13.08	-0.08%	June 2023	13.22	13.23	13.08	13.22	13.22	---	---	---	15.20	---	41	245	10,962
				September 2023	---	---	---	---	12.95	---	---	---	14.32	---	---	---	25
				December 2023	---	---	---	---	13.28	---	---	---	---	---	---	---	---
				March 2024	---	---	---	---	13.35	---	---	---	---	---	---	---	---
P.P.A. S.A. (CR)				(Contract Size: 100 Securities, Physical Delivery)													
19.22	19.06	19.14	0.42%	June 2023	---	---	---	---	19.44	---	---	---	19.04	---	---	---	433
				September 2023	---	---	---	---	19.25	---	---	---	---	---	---	---	---
				December 2023	---	---	---	---	19.34	---	---	---	---	---	---	---	---
				March 2024	---	---	---	---	19.44	---	---	---	---	---	---	---	---
PIRAEUS FINANCIAL HOLD (CR)				(Contract Size: 100 Securities, Physical Delivery)													
1.95	1.884	1.95	3.72%	June 2023	1.92	1.95	1.89	1.94	1.94	---	---	---	2.46	---	254	5,471	65,670
				September 2023	---	---	---	---	1.90	---	---	---	---	---	---	---	---
				December 2023	---	---	---	---	1.91	---	---	---	---	---	---	---	---
				March 2024	---	---	---	---	1.92	---	---	---	---	---	---	---	---
PPC (CR)				(Contract Size: 100 Securities, Physical Delivery)													
7.86	7.68	7.68	-1.03%	June 2023	7.84	7.88	7.70	7.71	7.71	---	---	---	8.38	---	90	377	26,198
				September 2023	---	---	---	---	7.84	---	---	---	---	---	---	---	---
				December 2023	---	---	---	---	7.87	---	---	---	---	---	---	---	---
				March 2024	---	---	---	---	7.91	---	---	---	---	---	---	---	---

Derivatives notes

Fixing prices and final open positions can be retrieved from the following path <http://www.helex.gr/el/web/guest/statistics-end-of-day-derivatives>

Underlying Asset				Derivatives Market													
Price max	Price min	Closing price	change	Delivery Month	Open price	Price max	Price min	Last price	Closing price	Last Bid	Last Ask	Fixing price*	Life high	Life low	Trades	Volume	Open Interest
QUEST HOLDINGS (CR)				(Contract Size: 100 Securities, Physical Delivery)													
5.04	4.96	5.03	1.72%	June 2023	4.95	4.95	4.95	4.95	4.95	---	---		5.21	---	2	10	167
				September 2023	---	---	---	---	4.99	---	---		---	---	---	---	---
				December 2023	---	---	---	---	5.02	---	---		---	---	---	---	---
				March 2024	---	---	---	---	5.04	---	---		---	---	---	---	---
TERNA ENERGY (CR)				(Contract Size: 100 Securities, Physical Delivery)													
18.64	18.32	18.4	0.00%	June 2023	18.65	18.65	18.50	18.57	18.57	---	---		19.90	---	17	345	8,182
				September 2023	---	---	---	---	18.58	---	---		---	---	---	---	---
				December 2023	---	---	---	---	18.67	---	---		---	---	---	---	---
				March 2024	---	---	---	---	18.76	---	---		---	---	---	---	---
TITAN CEMENT (CB)				(Contract Size: 100 Securities, Physical Delivery)													
14.5	14.2	14.44	2.12%	June 2023	14.44	14.44	14.44	14.44	14.44	---	---		14.90	---	1	2	730
				September 2023	---	---	---	---	14.28	---	---		---	---	---	---	---
				December 2023	---	---	---	---	14.35	---	---		---	---	---	---	---
				March 2024	---	---	---	---	14.42	---	---		---	---	---	---	---
VIOHALCO SA/NV (CB)				(Contract Size: 100 Securities, Physical Delivery)													
4.14	4.07	4.1	0.99%	June 2023	4.12	4.15	4.12	4.15	4.15	---	---		4.68	---	5	6	5,229
				September 2023	---	---	---	---	4.10	---	---		---	---	---	---	---
				December 2023	---	---	---	---	4.12	---	---		---	---	---	---	---
				March 2024	---	---	---	---	4.14	---	---		---	---	---	---	---

Daily Official List

Section 7: Index Options

Year: 144 Trading Day No: 59

Monday, 27 March, 2023

FTSE/Athex Large Cap

(Trade Unit: 1 Index Point x 2€ - Exercise Style: European, Cash Settlement)

Call Options

Put Options

Exerise Price	April 2023								May 2023								Other Months		April 2023								May 2023								Other Months		Exerise Price
	Open price	Price max	Price min	Last price	Closing price	Volume	Open Interest	Open price	Price max	Price min	Last price	Closing price	Volume	Open Interest	Volume	Open Interest	Open price	Price max	Price min	Last price	Closing price	Volume	Open Interest	Open price	Price max	Price min	Last price	Closing price	Volume	Open Interest	Volume	Open Interest					
1,725	-	-	-	-	-	-	-	-	-	-	-	-	-	-	-	-	-	-	-	-	-	-	-	-	-	-	-	-	-	-	-	1,725					
1,750	-	-	-	-	-	-	-	-	-	-	-	-	-	-	-	-	-	-	-	-	-	-	-	-	-	-	-	-	-	-	-	1,750					
1,775	-	-	-	-	-	-	-	-	-	-	-	-	-	-	-	-	-	-	-	-	-	-	-	-	-	-	-	-	-	-	-	1,775					
1,800	-	-	-	-	-	-	-	-	-	-	-	-	-	-	-	-	-	-	-	-	-	-	-	-	-	-	-	-	-	-	-	1,800					
1,825	-	-	-	-	-	-	-	-	-	-	-	-	-	-	-	-	-	-	-	-	-	-	-	-	-	-	-	-	-	-	-	1,825					
1,850	-	-	-	-	-	-	-	-	-	-	-	-	-	-	-	-	-	-	-	-	-	-	-	-	-	-	-	-	-	-	-	1,850					
1,875	-	-	-	-	-	-	-	-	-	-	-	-	-	-	-	-	-	-	-	-	-	-	-	-	-	-	-	-	-	-	-	1,875					
1,900	-	-	-	-	-	-	-	-	-	-	-	-	-	-	-	-	-	-	-	-	-	-	-	-	-	-	-	-	-	-	-	1,900					
1,925	-	-	-	-	-	-	-	-	-	-	-	-	-	-	-	-	-	-	-	-	-	-	-	-	-	-	-	-	-	-	-	1,925					
1,950	-	-	-	-	-	-	-	-	-	-	-	-	-	-	-	-	-	-	-	-	-	-	-	-	-	-	-	-	-	-	-	1,950					
1,975	-	-	-	-	-	-	-	-	-	-	-	-	-	-	-	-	-	-	-	-	-	-	-	-	-	-	-	-	-	-	-	1,975					
2,000	-	-	-	-	-	-	-	-	-	-	-	-	-	-	-	-	-	-	-	-	-	-	-	-	-	-	-	-	-	-	-	2,000					
2,050	-	-	-	-	-	-	-	-	-	-	-	-	-	-	-	-	-	-	-	-	-	-	-	-	-	-	-	-	-	-	-	2,050					
2,100	-	-	-	-	-	-	-	-	-	-	-	-	-	-	-	-	-	-	-	-	-	-	-	-	-	-	-	-	-	-	-	2,100					
2,150	0.00	0.00	0.00	-	304.00	-	-	-	-	-	-	-	-	-	-	-	0.00	0.00	0.00	-	1.60	-	-	-	-	-	-	-	-	-	-	-	2,150				
2,200	0.00	0.00	0.00	-	257.00	-	-	0.00	0.00	0.00	-	265.00	-	-	-	-	0.00	0.00	0.00	-	3.70	-	-	0.00	0.00	0.00	-	15.00	-	-	-	-	2,200				
2,250	0.00	0.00	0.00	-	211.00	-	-	0.00	0.00	0.00	-	224.00	-	-	-	-	0.00	0.00	0.00	-	7.80	-	-	0.00	0.00	0.00	-	23.50	-	-	-	-	2,250				
2,300	0.00	0.00	0.00	-	168.00	-	-	0.00	0.00	0.00	-	186.00	-	-	-	-	0.00	0.00	0.00	-	15.00	-	-	0.00	0.00	0.00	-	35.25	-	-	-	-	2,300				
2,350	0.00	0.00	0.00	-	129.00	-	-	0.00	0.00	0.00	-	151.00	-	-	-	-	0.00	0.00	0.00	-	26.25	-	-	0.00	0.00	0.00	-	51.00	-	-	-	-	2,350				
2,400	0.00	0.00	0.00	-	96.00	-	-	0.00	0.00	0.00	-	121.00	-	20	-	-	0.00	0.00	0.00	-	42.75	-	-	0.00	0.00	0.00	-	70.50	-	20	-	-	2,400				
2,450	0.00	0.00	0.00	-	68.00	-	20	0.00	0.00	0.00	-	95.00	-	20	-	-	49.00	0.00	49.00	49.00	49.00	2	101	0.00	0.00	0.00	-	94.00	-	25	-	-	2,450				
2,500	60.00	60.00	60.00	60.00	60.00	2	26	0.00	0.00	0.00	-	73.00	-	-	-	-	70.00	60.00	70.00	70.00	70.00	1	63	0.00	0.00	0.00	-	122.00	-	40	-	-	2,500				
2,550	0.00	0.00	0.00	-	30.25	-	24	0.00	0.00	0.00	-	55.00	-	60	-	-	83.50	0.00	83.50	83.50	83.50	1	26	121.00	121.00	121.00	121.00	121.00	20	20	-	-	2,550				
2,600	0.00	0.00	0.00	-	18.75	-	225	0.00	0.00	0.00	-	40.50	-	20	-	-	0.00	0.00	0.00	-	165.00	-	61	0.00	0.00	0.00	-	189.00	-	20	-	-	2,600				
2,650	0.00	0.00	0.00	-	11.25	-	24	0.00	0.00	0.00	-	29.25	-	-	-	-	0.00	0.00	0.00	-	208.00	-	22	0.00	0.00	0.00	-	228.00	-	1	-	-	2,650				
2,700	0.00	0.00	0.00	-	6.30	-	49	0.00	0.00	0.00	-	20.75	-	-	-	-	0.00	0.00	0.00	-	253.00	-	20	0.00	0.00	0.00	-	269.00	-	-	-	-	2,700				
2,750	0.00	0.00	0.00	-	3.40	-	-	0.00	0.00	0.00	-	14.50	-	-	-	-	0.00	0.00	0.00	-	300.00	-	40	0.00	0.00	0.00	-	313.00	-	-	-	-	2,750				
2,800	0.00	0.00	0.00	-	1.80	-	2	0.00	0.00	0.00	-	9.90	-	-	-	-	0.00	0.00	0.00	-	348.00	-	2	0.00	0.00	0.00	-	358.00	-	-	-	-	2,800				
2,850	0.00	0.00	0.00	-	0.88	-	-	0.00	0.00	0.00	-	6.60	-	-	-	-	0.00	0.00	0.00	-	397.00	-	1	0.00	0.00	0.00	-	404.00	-	-	-	-	2,850				
2,900	0.00	0.00	0.00	-	0.42	-	-	0.00	0.00	0.00	-	4.30	-	-	-	-	0.00	0.00	0.00	-	446.00	-	-	0.00	0.00	0.00	-	452.00	-	-	-	-	2,900				
2,950	0.00	0.00	0.00	-	0.19	-	-	0.00	0.00	0.00	-	2.80	-	-	-	-	0.00	0.00	0.00	-	496.00	-	-	0.00	0.00	0.00	-	500.00	-	-	-	-	2,950				
3,000	0.00	0.00	0.00	-	0.08	-	-	0.00	0.00	0.00	-	1.80	-	-	-	-	0.00	0.00	0.00	-	546.00	-	-	0.00	0.00	0.00	-	549.00	-	-	-	-	3,000				
Totals:						2	370							0	120	0	0							4	336							20	126	0	0		
Number of Trades:						1								0		0								4								1		0			

Hellenic Exchanges – Athens Stock Exchange S.A.

Market Analysis & Communication Unit

Section 7, 1/1

ALPHA SERVICES HOLD (CR)

(Contract Size: 100 Securities, Exercise Style: American, Physical Delivery)

Call Options																Put Options																				
April 2023								May 2023								Other Months		April 2023								May 2023								Other Months		
Exercise Price	Open price	Price max	Price min	Last price	Closing price	Volume	Open Interest	Open price	Price max	Price min	Last price	Closing price	Volume	Open Interest	Volume	Open Interest	Open price	Price max	Price min	Last price	Closing price	Volume	Open Interest	Open price	Price max	Price min	Last price	Closing price	Volume	Open Interest	Volume	Open Interest	Exercise Price			
0.500						-	-							-	-							-	-						-	-			0.005			
0.550						-	-							-	-							-	-						-	-			0.006			
0.600						-	-							-	-							-	-						-	-			0.006			
0.650						-	-							-	-							-	-						-	-			0.007			
0.700						-	-							-	-							-	-						-	-			0.007			
0.750						-	-							-	-							-	-						-	-			0.008			
0.800	0.000	0.000	0.000		0.292	-	-	0.000	0.000	0.000		0.294	-	-			0.000	0.000	0.000		0.001	-	-	0.000	0.000	0.000		0.001	-	-			0.008			
0.850	0.000	0.000	0.000		0.243	-	-	0.000	0.000	0.000		0.246	-	-			0.000	0.000	0.000		0.002	-	-	0.000	0.000	0.000		0.004	-	-			0.009			
0.900	0.000	0.000	0.000		0.197	-	-	0.000	0.000	0.000		0.201	-	-			0.000	0.000	0.000		0.005	-	-	0.000	0.000	0.000		0.008	-	-			0.009			
0.950	0.000	0.000	0.000		0.153	-	-	0.000	0.000	0.000		0.159	-	-			0.000	0.000	0.000		0.012	-	-	0.000	0.000	0.000		0.017	-	-			0.010			
1.000	0.000	0.000	0.000		0.115	-	-	0.000	0.000	0.000		0.123	-	-			0.000	0.000	0.000		0.023	-	-	0.000	0.000	0.000		0.030	-	-			0.010			
1.100	0.000	0.000	0.000		0.057	-	-	0.000	0.000	0.000		0.066	-	-			0.000	0.000	0.000		0.065	-	-	0.000	0.000	0.000		0.073	-	-			0.011			
1.200	0.000	0.000	0.000		0.024	-	3	0.000	0.000	0.000		0.031	-	-			0.000	0.000	0.000		0.132	-	-	0.000	0.000	0.000		0.138	-	-			0.012			
1.300	0.000	0.000	0.000		0.008	-	-	0.000	0.000	0.000		0.013	-	-			0.000	0.000	0.000		0.217	-	-	0.000	0.000	0.000		0.220	-	-			0.013			
1.400	0.000	0.000	0.000		0.003	-	-	0.000	0.000	0.000		0.005	-	-			0.000	0.000	0.000		0.311	-	-	0.000	0.000	0.000		0.313	-	-			0.014			
1.500	0.000	0.000	0.000		0.001	-	-	0.000	0.000	0.000		0.002	-	-			0.000	0.000	0.000		0.410	-	-	0.000	0.000	0.000		0.410	-	-			0.015			
1.600	0.000	0.000	0.000		0.001	-	-	0.000	0.000	0.000		0.001	-	-			0.000	0.000	0.000		0.510	-	-	0.000	0.000	0.000		0.510	-	-			0.016			
1.700	0.000	0.000	0.000		0.001	-	-	0.000	0.000	0.000		0.001	-	-			0.000	0.000	0.000		0.610	-	-	0.000	0.000	0.000		0.610	-	-			0.017			
1.800	0.000	0.000	0.000		0.001	-	-	0.000	0.000	0.000		0.001	-	-			0.000	0.000	0.000		0.710	-	-	0.000	0.000	0.000		0.710	-	-			0.018			
1.900	0.000	0.000	0.000		0.001	-	-	0.000	0.000	0.000		0.001	-	-			0.000	0.000	0.000		0.810	-	-	0.000	0.000	0.000		0.810	-	-			0.019			
2.000	0.000	0.000	0.000		0.001	-	-	0.000	0.000	0.000		0.001	-	-			0.000	0.000	0.000		0.910	-	-	0.000	0.000	0.000		0.910	-	-			0.020			
Totals:						0	3							0	0	0	0							0	0	0	0			0	0	0	0			
Number of Trades:						0								0		0							0.00								0		0			

NATIONAL BANK (CR)

(Contract Size: 100 Securities, Exercise Style: American, Physical Delivery)

Call Options																Put Options																				
April 2023								May 2023								Other Months		April 2023								May 2023								Other Months		Exerise Price
Exerise Price	Open price	Price max	Price min	Last price	Closing price	Volume	Open Interest	Open price	Price max	Price min	Last price	Closing price	Volume	Open Interest	Volume	Open Interest	Open price	Price max	Price min	Last price	Closing price	Volume	Open Interest	Open price	Price max	Price min	Last price	Closing price	Volume	Open Interest	Volume	Open Interest				
1.900						-	-							-	-								-	-					-	-		0.019				
2.000						-	-							-	-								-	-					-	-		0.020				
2.200						-	-							-	-								-	-					-	-		0.022				
2.400						-	-							-	-								-	-					-	-		0.024				
2.600						-	-							-	-								-	-					-	-		0.026				
2.800						-	-							-	-								-	-					-	-		0.028				
3.000	0.000	0.000	0.000		1.35	-	-							-	-		0.000	0.000	0.000		0.001	-	-					-	-			0.030				
3.200	0.000	0.000	0.000		1.16	-	-	0.000	0.000	0.000		1.17	-	-			0.000	0.000	0.000		0.001	-	-		0.000	0.000	0.000		0.006	-	-		0.032			
3.400	0.000	0.000	0.000		0.958	-	-	0.000	0.000	0.000		0.976	-	-			0.000	0.000	0.000		0.002	-	-		0.000	0.000	0.000		0.016	-	-		0.034			
3.600	0.000	0.000	0.000		0.764	-	-	0.000	0.000	0.000		0.796	-	-			0.000	0.000	0.000		0.009	-	-		0.000	0.000	0.000		0.035	-	-		0.036			
3.800	0.000	0.000	0.000		0.582	-	-	0.000	0.000	0.000		0.631	-	-			0.000	0.000	0.000		0.026	-	-		0.000	0.000	0.000		0.069	-	-		0.038			
4.000	0.000	0.000	0.000		0.419	-	-	0.000	0.000	0.000		0.486	-	-			0.000	0.000	0.000		0.063	-	-		0.000	0.000	0.000		0.123	-	-		0.040			
4.400	0.000	0.000	0.000		0.179	-	-	0.000	0.000	0.000		0.262	-	-			0.000	0.000	0.000		0.223	-	-		0.000	0.000	0.000		0.299	-	-		0.044			
4.800	0.000	0.000	0.000		0.057	-	-	0.000	0.000	0.000		0.124	-	-			0.000	0.000	0.000		0.501	-	-		0.000	0.000	0.000		0.562	-	-		0.048			
5.200	0.000	0.000	0.000		0.014	-	-	0.000	0.000	0.000		0.052	-	-			0.000	0.000	0.000		0.859	-	-		0.000	0.000	0.000		0.890	-	-		0.052			
5.600	0.000	0.000	0.000		0.003	-	-	0.000	0.000	0.000		0.020	-	-			0.000	0.000	0.000		1.25	-	-		0.000	0.000	0.000		1.26	-	-		0.056			
6.000	0.000	0.000	0.000		0.003	-	-	0.000	0.000	0.000		0.007	-	-			0.000	0.000	0.000		1.65	-	-		0.000	0.000	0.000		1.65	-	-		0.060			
6.400	0.000	0.000	0.000		0.002	-	-	0.000	0.000	0.000		0.002	-	-			0.000	0.000	0.000		2.05	-	-		0.000	0.000	0.000		2.05	-	-		0.064			
6.800	0.000	0.000	0.000		0.001	-	-	0.000	0.000	0.000		0.001	-	-			0.000	0.000	0.000		2.45	-	-		0.000	0.000	0.000		2.45	-	-		0.068			
7.200	0.000	0.000	0.000		0.001	-	-	0.000	0.000	0.000		0.001	-	-			0.000	0.000	0.000		2.85	-	-		0.000	0.000	0.000		2.85	-	-		0.072			
7.600	0.000	0.000	0.000		0.001	-	-	0.000	0.000	0.000		0.001	-	-			0.000	0.000	0.000		3.25	-	-		0.000	0.000	0.000		3.25	-	-		0.076			
Totals:						0	0						0	0	0	0						0	0						0	2	0	270				
Number of Trades:						0							0		0							0.00							0		0					

OPAP (CR)

(Contract Size: 100 Securities, Exercise Style: American, Physical Delivery)

Call Options																Put Options																				
April 2023								May 2023								Other Months		April 2023								May 2023								Other Months		
Exercise Price	Open price	Price max	Price min	Last price	Closing price	Volume	Open Interest	Open price	Price max	Price min	Last price	Closing price	Volume	Open Interest	Volume	Open Interest	Open price	Price max	Price min	Last price	Closing price	Volume	Open Interest	Open price	Price max	Price min	Last price	Closing price	Volume	Open Interest	Volume	Open Interest	Exercise Price			
8.800						-	-							-	-								-	-					-	-		0.088				
9.200	0.000	0.000	0.000		5.41	-	-							-	-		0.000	0.000	0.000		0.001	-	-					-	-			0.092				
9.600	0.000	0.000	0.000		5.01	-	-	0.000	0.000	0.000		5.03	-	-			0.000	0.000	0.000		0.001	-	-	0.000	0.000	0.000		0.001	-	-		0.096				
10.000	0.000	0.000	0.000		4.62	-	-	0.000	0.000	0.000		4.63	-	-			0.000	0.000	0.000		0.001	-	-	0.000	0.000	0.000		0.001	-	-		0.100				
11.000	0.000	0.000	0.000		3.62	-	-	0.000	0.000	0.000		3.64	-	-			0.000	0.000	0.000		0.001	-	-	0.000	0.000	0.000		0.001	-	-		0.110				
12.000	0.000	0.000	0.000		2.62	-	-	0.000	0.000	0.000		2.65	-	-			0.000	0.000	0.000		0.001	-	-	0.000	0.000	0.000		0.014	-	-		0.120				
13.000	0.000	0.000	0.000		1.64	-	-	0.000	0.000	0.000		1.73	-	-			0.000	0.000	0.000		0.021	-	-	0.000	0.000	0.000		0.088	-	-		0.130				
14.000	0.000	0.000	0.000		0.792	-	-	0.000	0.000	0.000		0.970	-	-			0.000	0.000	0.000		0.171	-	-	0.000	0.000	0.000		0.328	-	-		0.140				
15.000	0.000	0.000	0.000		0.263	-	-	0.000	0.000	0.000		0.450	-	-			0.000	0.000	0.000		0.643	-	1	0.000	0.000	0.000		0.808	-	-		0.150				
16.000	0.000	0.000	0.000		0.056	-	-	0.000	0.000	0.000		0.172	-	-			0.000	0.000	0.000		1.44	-	-	0.000	0.000	0.000		1.53	-	-		0.160				
17.000	0.000	0.000	0.000		0.007	-	-	0.000	0.000	0.000		0.054	-	-			0.000	0.000	0.000		2.40	-	-	0.000	0.000	0.000		2.43	-	-		0.170				
18.000	0.000	0.000	0.000		0.001	-	-	0.000	0.000	0.000		0.014	-	-			0.000	0.000	0.000		3.40	-	-	0.000	0.000	0.000		3.40	-	-		0.180				
19.000	0.000	0.000	0.000		0.001	-	-	0.000	0.000	0.000		0.003	-	-			0.000	0.000	0.000		4.40	-	-	0.000	0.000	0.000		4.40	-	-		0.190				
20.000	0.000	0.000	0.000		0.001	-	-	0.000	0.000	0.000		0.001	-	-			0.000	0.000	0.000		5.40	-	-	0.000	0.000	0.000		5.40	-	-		0.200				
Totals:						0	0						0	0	0	0						0	1					0	20	0	0					
Number of Trades:							0						0	0								0.00						0		0						

OTE (CR)

(Contract Size: 100 Securities, Exercise Style: American, Physical Delivery)

Call Options																Put Options																				
April 2023								May 2023								Other Months		April 2023								May 2023								Other Months		
Exercise Price	Open price	Price max	Price min	Last price	Closing price	Volume	Open Interest	Open price	Price max	Price min	Last price	Closing price	Volume	Open Interest	Volume	Open Interest	Open price	Price max	Price min	Last price	Closing price	Volume	Open Interest	Open price	Price max	Price min	Last price	Closing price	Volume	Open Interest	Volume	Open Interest	Exercise Price			
9.200	0.000	0.000	0.000		3.90	-	-	0.000	0.000	0.000		3.92	-	-			0.000	0.000	0.000		0.001	-	-	0.000	0.000	0.000		0.001	-	-			0.092			
9.600	0.000	0.000	0.000		3.50	-	-	0.000	0.000	0.000		3.52	-	-			0.000	0.000	0.000		0.001	-	-	0.000	0.000	0.000		0.001	-	-			0.096			
10.000	0.000	0.000	0.000		3.11	-	-	0.000	0.000	0.000		3.12	-	-			0.000	0.000	0.000		0.001	-	-	0.000	0.000	0.000		0.002	-	-			0.100			
11.000	0.000	0.000	0.000		2.11	-	-	0.000	0.000	0.000		2.15	-	-			0.000	0.000	0.000		0.002	-	-	0.000	0.000	0.000		0.028	-	-			0.110			
12.000	0.000	0.000	0.000		1.16	-	-	0.000	0.000	0.000		1.28	-	-			0.000	0.000	0.000		0.050	-	-	0.000	0.000	0.000		0.154	-	-			0.120			
13.000	0.000	0.000	0.000		0.439	-	-	0.000	0.000	0.000		0.630	-	-			0.000	0.000	0.000		0.330	-	4	0.000	0.000	0.000		0.502	-	-			0.130			
14.000	0.000	0.000	0.000		0.100	-	10	0.000	0.000	0.000		0.250	-	-			0.000	0.000	0.000		0.993	-	60	0.000	0.000	0.000		1.12	-	-			0.140			
15.000	0.000	0.000	0.000		0.013	-	4	0.000	0.000	0.000		0.080	-	-			0.000	0.000	0.000		1.91	-	-	0.000	0.000	0.000		1.96	-	-			0.150			
16.000	0.000	0.000	0.000		0.001	-	-	0.000	0.000	0.000		0.021	-	-			0.000	0.000	0.000		2.91	-	-	0.000	0.000	0.000		2.91	-	-			0.160			
17.000	0.000	0.000	0.000		0.001	-	-	0.000	0.000	0.000		0.004	-	-			0.000	0.000	0.000		3.91	-	-	0.000	0.000	0.000		3.91	-	-			0.170			
18.000	0.000	0.000	0.000		0.001	-	-	0.000	0.000	0.000		0.001	-	-			0.000	0.000	0.000		4.91	-	-	0.000	0.000	0.000		4.91	-	-			0.180			
19.000	0.000	0.000	0.000		0.001	-	-	0.000	0.000	0.000		0.001	-	-			0.000	0.000	0.000		5.91	-	-	0.000	0.000	0.000		5.91	-	-			0.190			
20.000	0.000	0.000	0.000		0.001	-	-	0.000	0.000	0.000		0.001	-	-			0.000	0.000	0.000		6.91	-	-	0.000	0.000	0.000		6.91	-	-			0.200			
22.000						-	-						-	-								-	-					-	-			0.220				
24.000						-	-						-	-								-	-					-	-			0.240				
Totals:						0	14						0	0	0	0						0	64					0	0	0	0					
Number of Trades:							0						0		0							0.00					0			0						

PIRAEUS FINANCIAL HOLD (CR)

(Contract Size: 100 Securities, Exercise Style: American, Physical Delivery)

Call Options																Put Options																				
April 2023								May 2023								Other Months		April 2023								May 2023								Other Months		
Exerise Price	Open price	Price max	Price min	Last price	Closing price	Volume	Open Interest	Open price	Price max	Price min	Last price	Closing price	Volume	Open Interest	Volume	Open Interest	Open price	Price max	Price min	Last price	Closing price	Volume	Open Interest	Open price	Price max	Price min	Last price	Closing price	Volume	Open Interest	Volume	Open Interest	Exerise Price			
0.500						-	-							-	-							-	-						-	-			0.005			
0.550						-	-							-	-							-	-						-	-			0.006			
0.600						-	-							-	-							-	-						-	-			0.006			
0.650						-	-							-	-							-	-						-	-			0.007			
0.700						-	-							-	-							-	-						-	-			0.007			
0.750						-	-							-	-							-	-						-	-			0.008			
0.800						-	-							-	-							-	-						-	-			0.008			
0.850						-	-							-	-							-	-						-	-			0.009			
0.900						-	-							-	-							-	-						-	-			0.009			
0.950						-	-							-	-							-	-						-	-			0.010			
1.000						-	-							-	-							-	-						-	-			0.010			
1.100						-	-							-	-							-	-						-	-			0.011			
1.200	0.000	0.000	0.000		0.682	-	-							-	-	0.000	0.000	0.000		0.001	-	-						-	-				0.012			
1.300	0.000	0.000	0.000		0.582	-	-	0.000	0.000	0.000		0.586	-	-		0.000	0.000	0.000		0.001	-	-	0.000	0.000	0.000		0.002	-	-				0.013			
1.400	0.000	0.000	0.000		0.483	-	-	0.000	0.000	0.000		0.490	-	-		0.000	0.000	0.000		0.001	-	-	0.000	0.000	0.000		0.006	-	-				0.014			
1.500	0.000	0.000	0.000		0.387	-	-	0.000	0.000	0.000		0.400	-	-		0.000	0.000	0.000		0.004	-	-	0.000	0.000	0.000		0.015	-	-				0.015			
1.600	0.000	0.000	0.000		0.296	-	-	0.000	0.000	0.000		0.316	-	-		0.000	0.000	0.000		0.013	-	-	0.000	0.000	0.000		0.031	-	-				0.016			
1.700	0.000	0.000	0.000		0.215	-	-	0.000	0.000	0.000		0.241	-	-		0.000	0.000	0.000		0.032	-	-	0.000	0.000	0.000		0.056	-	-				0.017			
1.800	0.000	0.000	0.000		0.147	-	-	0.000	0.000	0.000		0.179	-	2		0.000	0.000	0.000		0.064	-	-	0.000	0.000	0.000		0.094	-	-				0.018			
1.900	0.000	0.000	0.000		0.095	-	-	0.000	0.000	0.000		0.129	-	-		0.000	0.000	0.000		0.112	-	-	0.000	0.000	0.000		0.144	-	-				0.019			
2.000	0.000	0.000	0.000		0.057	-	300	0.000	0.000	0.000		0.090	-	-		0.000	0.000	0.000		0.175	-	-	0.000	0.000	0.000		0.205	-	-				0.020			
2.200	0.000	0.000	0.000		0.017	-	10	0.000	0.000	0.000		0.040	-	-		0.000	0.000	0.000		0.335	-	-	0.000	0.000	0.000		0.354	-	-				0.022			
2.400	0.000	0.000	0.000		0.004	-	10	0.000	0.000	0.000		0.016	-	-		0.000	0.000	0.000		0.522	-	-	0.000	0.000	0.000		0.531	-	-				0.024			
2.600	0.000	0.000	0.000		0.001	-	-	0.000	0.000	0.000		0.006	-	-		0.000	0.000	0.000		0.720	-	-	0.000	0.000	0.000		0.722	-	-				0.026			
2.800	0.000	0.000	0.000		0.001	-	-	0.000	0.000	0.000		0.002	-	-		0.000	0.000	0.000		0.920	-	-	0.000	0.000	0.000		0.920	-	-				0.028			
3.000	0.000	0.000	0.000		0.001	-	-	0.000	0.000	0.000		0.001	-	-		0.000	0.000	0.000		1.12	-	-	0.000	0.000	0.000		1.12	-	-				0.030			
3.200	0.000	0.000	0.000		0.001	-	-	0.000	0.000	0.000		0.001	-	-		0.000	0.000	0.000		1.32	-	-	0.000	0.000	0.000		1.32	-	-				0.032			
3.400	0.000	0.000	0.000		0.001	-	-	0.000	0.000	0.000		0.001	-	-		0.000	0.000	0.000		1.52	-	-	0.000	0.000	0.000		1.52	-	-				0.034			
Totals:						0	320						0	2	0	0						0	0					0	0	0	0					
Number of Trades:						0							0		0						0.00						0		0							

PPC (CR)

(Contract Size: 100 Securities, Exercise Style: American, Physical Delivery)

Call Options																Put Options																				
April 2023								May 2023								Other Months		April 2023								May 2023								Other Months		
Exerise Price	Open price	Price max	Price min	Last price	Closing price	Volume	Open Interest	Open price	Price max	Price min	Last price	Closing price	Volume	Open Interest	Volume	Open Interest	Open price	Price max	Price min	Last price	Closing price	Volume	Open Interest	Open price	Price max	Price min	Last price	Closing price	Volume	Open Interest	Volume	Open Interest	Exerise Price			
3.400						-	-							-	-								-	-					-	-			0.034			
3.600						-	-							-	-								-	-					-	-			0.036			
3.800						-	-							-	-								-	-					-	-			0.038			
4.000						-	-							-	-								-	-					-	-			0.040			
4.400						-	-							-	-								-	-					-	-			0.044			
4.800	0.000	0.000	0.000		2.97	-	-							-	-		0.000	0.000	0.000		0.001	-	-					-	-				0.048			
5.200	0.000	0.000	0.000		2.57	-	-							-	-		0.000	0.000	0.000		0.001	-	-					-	-				0.052			
5.600	0.000	0.000	0.000		2.17	-	-	0.000	0.000	0.000		2.18	-	-			0.000	0.000	0.000		0.001	-	-	0.000	0.000	0.000		0.006	-	-			0.056			
6.000	0.000	0.000	0.000		1.77	-	-	0.000	0.000	0.000		1.80	-	-			0.000	0.000	0.000		0.003	-	-	0.000	0.000	0.000		0.021	-	-			0.060			
6.400	0.000	0.000	0.000		1.38	-	-	0.000	0.000	0.000		1.43	-	-			0.000	0.000	0.000		0.013	-	-	0.000	0.000	0.000		0.055	-	-			0.064			
6.800	0.000	0.000	0.000		1.02	-	-	0.000	0.000	0.000		1.10	-	-			0.000	0.000	0.000		0.047	-	-	0.000	0.000	0.000		0.119	-	-			0.068			
7.200	0.000	0.000	0.000		0.697	-	110	0.000	0.000	0.000		0.813	-	-			0.000	0.000	0.000		0.126	-	-	0.000	0.000	0.000		0.232	-	-			0.072			
7.600	0.000	0.000	0.000		0.439	-	29	0.000	0.000	0.000		0.576	-	50			0.000	0.000	0.000		0.268	-	10	0.000	0.000	0.000		0.394	-	-			0.076			
8.000	0.000	0.000	0.000		0.251	-	82	0.000	0.000	0.000		0.391	-	-			0.000	0.000	0.000		0.479	-	10	0.000	0.000	0.000		0.608	-	-			0.080			
8.400	0.000	0.000	0.000		0.134	-	21	0.000	0.000	0.000		0.253	-	11			0.000	0.000	0.000		0.763	-	-	0.000	0.000	0.000		0.871	-	-			0.084			
8.800	0.000	0.000	0.000		0.063	-	4	0.000	0.000	0.000		0.158	-	5			0.000	0.000	0.000		1.09	-	1	0.000	0.000	0.000		1.18	-	-			0.088			
9.200	0.000	0.000	0.000		0.028	-	-	0.000	0.000	0.000		0.095	-	-			0.000	0.000	0.000		1.46	-	-	0.000	0.000	0.000		1.51	-	-			0.092			
9.600	0.000	0.000	0.000		0.011	-	-	0.000	0.000	0.000		0.055	-	-			0.000	0.000	0.000		1.84	-	-	0.000	0.000	0.000		1.88	-	-			0.096			
10.000	0.000	0.000	0.000		0.004	-	-	0.000	0.000	0.000		0.031	-	-			0.000	0.000	0.000		2.24	-	-	0.000	0.000	0.000		2.25	-	-			0.100			
11.000	0.000	0.000	0.000		0.001	-	-	0.000	0.000	0.000		0.006	-	-			0.000	0.000	0.000		3.24	-	-	0.000	0.000	0.000		3.24	-	-			0.110			
Totals:						0	246							0	66	0	0							0	21							0	0	0	0	
Number of Trades:						0								0		0								0.00								0		0		

Lending Products	Underlying Title	Multilateral Transactions[1]					Bilateral Transactions[2]		Stock Borrowing through OTC (volume)[3]
		Open Interest[5]	Volume(Offered)	Average Weighted	Transactions volume	Average Weighted	Transactions Volume	Average Weighted	Transactions Volume
ADMIEBOR	ADMIE (IPTO) HOLDING S.A. (CR)	19,000	---	---	---	---	---	---	442,986
AEGNBOR	AEGEAN AIRLINES (CR)	14,447	---	---	5,565	6.74%	---	---	31,253
ALPHABOR	ALPHA SERVICES HOLD (CR)	12,700	---	---	---	---	---	---	59,289,763
ALMYBOR	ALUMIL (CR)	---	---	---	---	---	---	---	---
OTOELBOR	AUTOHELLAS SA (CR)	4,860	---	---	---	---	---	---	58,294
AVAXBOR	AVAX S.A. (CR)	---	---	---	---	---	---	---	---
EEEBOR	CC HBC AG (CR)	6,955	---	---	---	---	7,000	4.50%	41,108
CENERBOR	CENERGY HOLDINGS (CB)	---	---	---	---	---	---	---	---
ELLAKTORBOR	ELLAKTOR (CR)	14,460	---	---	---	---	---	---	14,176
ELHABOR	ELVALHALCOR (CR)	31,247	---	---	---	---	---	---	64,887
EUROBBOR	EUROBANK HOLDINGS (CR)	123,263	---	---	---	---	---	---	34,076,283
EYDAPBOR	EYDAP S.A. (CR)	15,318	---	---	1,700	8.52%	---	---	225,404
FFGRPBOR	FOLLI FOLLIE (CR)	---	---	---	---	---	---	---	887,119
FOYRKBOR	FOURLIS (CR)	---	---	---	---	---	---	---	25,636
GEKTERNABOR	GEK TERNA (CR)	---	---	---	---	---	---	---	115,319
SARBOR	GR. SARANTIS S.A. (CR)	564	---	---	---	---	2,500	6.50%	63,388
EXAEBOR	HELLENIC EXCHANGES-A.S.E. (CR)	5,000	---	---	---	---	---	---	174,347
ELPEBOR	HELLENIQ ENERGY (CR)	---	---	---	---	---	---	---	222,640
INTRKBOR	INTRACOM HOLDINGS (CR)	---	---	---	---	---	---	---	---
INKATBOR	INTRAKAT (CR)	---	---	---	---	---	---	---	---
BELABOR	JUMBO SA (CR)	53,677	---	---	4,945	6.23%	---	---	408,633
LAMDABOR	LAMDA DEVELOPMENT SA (CR)	---	---	---	---	---	---	---	509,570
MIGBOR	MIG (CR)	47,631	---	---	---	---	---	---	1,204,474
MOHBOR	MOTOR OIL (CR)	58,881	---	---	4,000	4.25%	---	---	1,871,712
MYTILBOR	MYTILINEOS (CR)	20,060	---	---	---	---	---	---	115,619
ETEBOR	NATIONAL BANK (CR)	18,950	---	---	---	---	---	---	10,350,185
OPAPBOR	OPAP (CR)	21,000	---	---	---	---	---	---	1,444,469
HTOBOR	OTE (CR)	1,600	---	---	---	---	---	---	968,621
PPABOR	P.P.A. S.A. (CR)	3,250	---	---	---	---	---	---	65,287
TPEIRBOR	PIRAEUS FINANCIAL HOLD (CR)	5,000	---	---	---	---	---	---	1,032,501
PPCBOR	PPC (CR)	2,000	---	---	---	---	---	---	2,197,000

Stock Lending Notes

- [1] - Multilateral contracts Lending or Borrowing as per Methods 8-1, 8-2 and 8-3-3 (According to ATHEX BoD Resolution No.17)
- [2] - Bilateral Contracts Lending or Borrowing as per Methods 8-3-1 and 8-3-2 (According to ATHEX BoD Resolution No.20)
- [3] - The information concerning OTC Stock Borrowing Transactions is based on the statements of the Dematerialised Securities System (DSS) operators involved and refers to volumes that have been registered up until the previous working day.
- [4] - Average Price (Volume weighted)
- [5] - The Data concerning Open Interest before the start of trading session

Lending Products	Underlying Title	Multilateral Transactions[1]					Bilateral Transactions[2]		Stock Borrowing through OTC (volume)[3]
		Open Interest[5]	Volume(Offered)	Average Weighted	Transactions volume	Average Weighted	Transactions Volume	Average Weighted	Transactions Volume
QUALBOR	QUALITY & RELIABILITY SA (CR)	---	---	---	---	---	---	---	---
QUESTBOR	QUEST HOLDINGS (CR)	10,228	---	---	---	---	---	---	73,355
TENERGYBOR	TERNA ENERGY (CR)	---	---	---	---	---	---	---	168,745
TITCBOR	TITAN CEMENT (CB)	4,045	---	---	---	---	---	---	299,051
VIOBOR	VIOHALCO SA/NV (CB)	14,477	---	---	3,000	6.80%	---	---	---

Stock Lending Notes

[1] - Multilateral contracts Lending or Borrowing as per Methods 8-1, 8-2 and 8-3-3 (According to ATHEX BoD Resolution No.17)

[2] - Billateral Contracts Lending or Borrowing as per Methods 8-3-1 and 8-3-2 (According to ATHEX BoD Resolution No.20)

[3] - The information concerning OTC Stock Borrowing Transactions is based on the statements of the Dematerialised Securities System (DSS) operators involved and refers to volumes that have been registered up until the previous working day.

[4] - Average Price (Volume weighted)

[5] - The Data concerning Open Interest before the start of trading session

Sectors codification for listed companies

12003-	ETF	10101010	Computer Services
10101015	Software	10102030	Computer Hardware
15101010	Telecommunications Equipment	15102015	Telecommunications Services
20101010	Health Care Facilities	20101025	Health Care Services
20102010	Medical Equipment	20103015	Pharmaceuticals
30101010	Banks	30202000	Diversified Financial Services
30202010	Asset Managers & Custodians	30202015	Investment Services
30204000	Closed End Investments	30302010	Full Line Insurance
30302015	Insurance Brokers	30302025	Property and Casualty Insurance
35101010	Real Estate Holding and Development	35101015	Real Estate Services
35102000	Diversified REITs	35102030	Office REITs
40201040	Rental & Leasing Services: Consumer	40202010	Home Construction
40202015	Household Furnishings	40202020	Household Appliance
40203040	Electronic Entertainment	40203045	Toys
40204020	Clothing & Accessories	40301010	Entertainment
40301030	Publishing	40301035	Radio & TV Broadcasters
40401010	Diversified Retailers	40401020	Apparel Retailers
40401025	Home Improvement Retailers	40401030	Specialty Retailers
40501010	Airlines	40501015	Travel & Tourism
40501020	Casinos & Gambling	40501025	Hotels & Motels
45101015	Distillers & Vintners	45101020	Soft Drinks
45102010	Farming Fishing Ranching & Plantations	45102020	Food Products
45103010	Tobacco	45201010	Food Retailers & Wholesalers
45201020	Personal Products	50101010	Construction
50101020	Building Roof/Wallboard and Plumbing	50101030	Cement
50101035	Building Materials: Other	50202010	Electrical Components
50203000	Diversified Industrials	50203015	Plastics
50203030	Containers & Packaging	50204000	Machinery: Industrial
50204020	Machinery: Construction & Handling	50205010	Industrial Suppliers
50205020	Back Office Support HR & Consulting	50205030	Forms & Bulk Printing Services
50206015	Commercial Vehicles & Parts	50206030	Marine Transportation
50206060	Transportation Services	55101000	Diversified Materials
55101020	Textile Products	55102000	General Mining
55102010	Iron & Steel	55102015	Metal Fabricating
55102035	Aluminum	60101020	Oil Refining and Marketing
65101010	Alternative Electricity	65101015	Conventional Electricity
65102030	Water		



ATHEX
Athens Stock Exchange

Λεωφ. Αθηνών 110 104 42 Αθήνα
110, Athinon Ave. GR 104 42 Athens
tel. (+30)210-33.66.800, fax (+30)210-33.66.101
www.athexgroup.gr