

20

**Ημερήσιο Δελτίο  
Συναλλακτικής Δραστηριότητας**

Daily Official List  
of Trading Activity

Tuesday, 29 September, 2020  
Year: 141 Trading Day No: 185



**ATHEXGROUP**  
Athens Exchange Group

**Disclaimer:**

Hellenic Exchanges-Athens Stock Exchange S.A endeavours to ensure that the data and other material ("Information") presented on the Daily Official List are accurate and complete, but it is not liable for any errors or omissions of data or /and for the accuracy, credibility, updating and completeness of the aforesaid information nor it has any liability arising directly or indirectly from the use of the above Information.

The Company is not liable for the accuracy of the data included in listed companies' announcements. Only the sender of such an announcement is fully and solely liable for any infringement of third party's rights from the content of such announcement. All contents of the Daily Official List are provided only for information purposes and do not constitute investment advice or solicitation to invest in securities or other products listed for trading on the Exchange.

You acknowledge and agree that the Company is the owner of any property rights related to any Information appearing on the Daily Official List including intellectual property rights copyright, trademarks, etc.

The above data are a property of the Hellenic Exchanges-Athens Exchange and are copyright protected. Users are forbidden to reproduce, modify, copy, sale, transmit or redistribute, by all reproduction means and methods, part or the whole of the above data, without reference to their source.

The commercial exploitation of these data is, also, forbidden by third parties. Hellenic Exchanges-Athens Exchange does not carry any responsibility, direct or indirect, derived from usage or accidental alteration of the above data when used by third parties.

---

**Hellenic Exchanges – Athens Stock Exchange S.A.**

110 Athinon Ave., 10442 Athens, Tel: (210) 33.66.800, Fax: (210) 32.13.938

[www.athexgroup.gr](http://www.athexgroup.gr)

---

**Thessalonica Stock Exchange Center (T.S.E.C)**

16-18 Katouni Str., Thessalonica 546 25 Tel: (2310) 567.667, Fax: (2310) 530.545

**Athex Members Guarantee Fund**

14-16 Fidiou Str., Athens 106 78, Tel: (210) 33.04.682, Fax: (210) 33.04.155

**Hellenic Republic Capital Market Commission**

1 Kolokotroni Str. & 1 Stadiou Str., Athens 10562 Tel: (210) 33.77.100 Fax: (210) 33.77.173

---

**Table of Contents**

---

**Section 1: Statistical Figures of Securities, Derivatives and Lending**

Summary of Markets

Athex Indices

Analytic Figures for Athex Market's Boards and Categories

Trading Details by Athex Sectors and Financial Instruments (ETFs)

Top 10 best &amp; worst performing Shares

Derivatives Summary

**Section 2: Analytic Figures of Shares Transactions**

Analytic Figures of Shares Transactions

Shares' Notes

**Section 3: Figures of Securities Transactions**

Securities Blocks Details

Shares Rights Details

Stock Borrowing

Securities Forced Sales

Forced Sales Registered Shares

Exchange Traded Funds (ETFs) Characteristics

**Section 5: Bonds traded in Fixed Income Assets Market**

Convertible Corporate Bonds - Regulated Market

Non Convertible Corporate Bonds - Regulated Market

Government Bonds

Treasury Bills &amp; Zero Coupon Government Bonds

Government Bonds Traded with the Open Outcry Method

State Banks Bonds

**Section 6: Additional Infos**

Athex &amp; ATHEXClear Members List

List of Stocks under Market Making operations

**Section 7: Derivatives Market Analytic Figures**

Index Futures

Stock Futures

Index Options

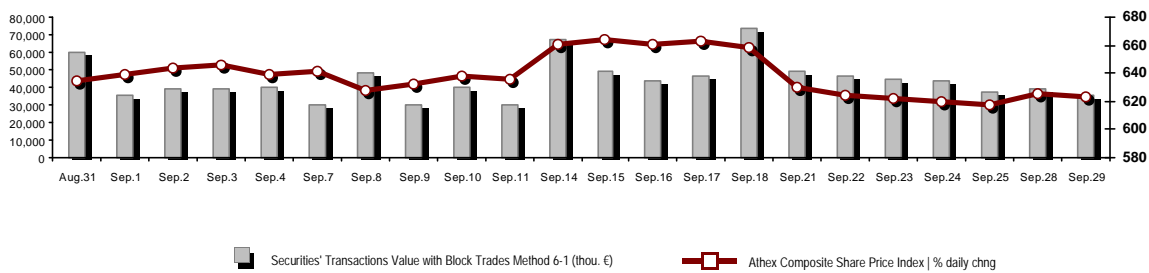
Stock Options

Stock Lending Analytic Figures

**Appendix A: Sectors codification for listed companies**

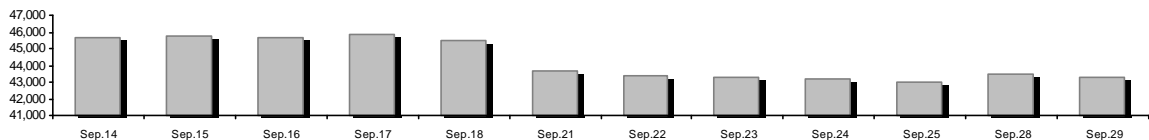
## Summary of Markets

Athex Composite Share Price Index vs Shares and Derivatives Transactions Value

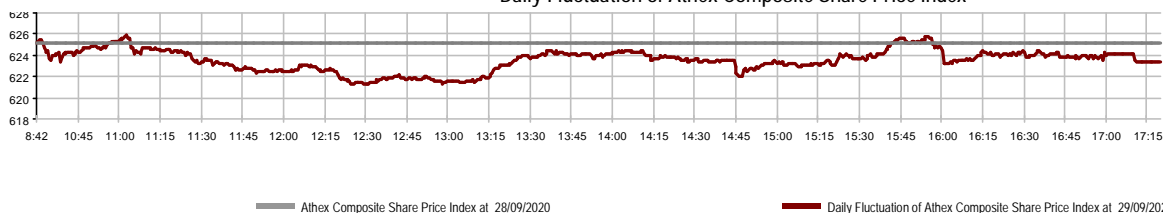


Athex Capitalisation (mill. €) **:	43,256.42		Derivatives Total Open Interest	292,314
Daily change: mill. €   %	-220.90	-0.51%	in Index Futures   % daily chng	4,173 -1.28%
Yearly Avg Capitalisation: mill. €   % chng prev year Avg	47,500.52	-13.29%	in Stock Futures   % daily chng	285,711 0.84%
Athex Composite Share Price Index   % daily chng	623.36	-0.29%	in Index Options   % daily chng	1,363 1.49%
Athex Composite Share Price Index Capitalisation (mill. €)	38,033.82		in Stock Options   % daily chng	1,067 0.47%
Daily change (mill. €)	-204.85			
Securities' Transactions Value with Block Trades Method 6-1 (t)	35,531.99		Derivatives Contracts Volume:	17,478
Daily change: %	-3,339.60	-8.59%	Daily change: pieces   %	-4,302 -19.75%
YtD Avg Trans. Value: thou. €   % chng prev year Avg	62,603.15	-4.87%	YtD Avg Derivatives Contracts % chng prev year Avg	37,172 -11.27%
Blocks Transactions Value of Method 6-1 (thou. €)	2,734.62		Derivatives Trades Number:	1,377
Blocks Transactions Value of Method 6-2 & 6-3 (thou. €)	0.00		Daily change: number   %	-369 -21.13%
Bonds Transactions Value (thou.€)	410.02		YtD Avg Trades number % chng prev year Avg	2,553 -10.40%
Securities' Transactions Volume with Block Trades Method 6-1 (th)	31,625.13		Lending Total Open Interest	284,293
Daily change: thou. pieces   %	806.62	2.62%	Daily change: pieces   %	7,938 2.87%
YtD Avg Volume: % chng prev year Avg	40,912.62	28.87%	Lending Volume (Multilateral/Bilateral)	0
Blocks Transactions Volume of Method 6-1 (thou. Pieces)	301.14		Daily change: pieces   %	-30,618
Blocks Transactions Volume of Method 6-2 & 6-3 (thou. Pieces)	0.00			
Bonds Transactions Volume	417,000		Multilateral Lending	0
			Bilateral Lending	0
Securities' Trades Number with Block Trades Method 6-1	22,650		Lending Trades Number:	0
Daily change: number   %	-433	-1.88%	Daily change: %	-7
YtD Avg Trades number % chng prev year Avg	31,750	16.95%	Multilateral Lending Trades Number	0
Number of Blocks Method 6-1	3		Bilateral Lending Trades Number	0
Number of Blocks Method 6-2 & 6-3	0			
Number of Bonds Transactions	56			

Athex Capitalisation (mill. €) \*\*



Daily Fluctuation of Athex Composite Share Price Index



## Athex Indices

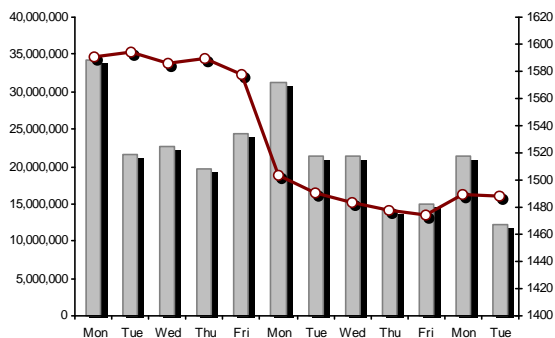
Index name	29/09/2020	28/09/2020	pts.	%	Min	Max	Year min	Year max	Year change
Athex Composite Share Price Index	623.36 €	625.20	-1.84	-0.29%	621.24	625.84	469.55	949.20	-32.00% €
FTSE/Athex Large Cap	1,487.72 €	1,489.58	-1.86	-0.12%	1,479.95	1,493.44	1,135.79	2,371.26	-35.26% €
FTSE/Athex Mid Cap Index	855.77 #	850.76	5.01	0.59%	847.17	857.40	659.09	1,298.86	-28.40% €
FTSE/ATHEX-CSE Banking Index	227.93 €	228.75	-0.82	-0.36%	226.09	230.90	199.24	673.55	-65.98% €
FTSE/ATHEX High Dividend Yield Index	2,278.43 #	2,277.38	1.05	0.05%	2,273.13	2,289.45	1,730.40	3,015.23	-22.54% €
FTSE/ATHEX Global Traders Index Plus	1,760.15 #	1,753.95	6.20	0.35%	1,753.56	1,769.83	1,269.53	2,435.50	-24.09% €
FTSE/ATHEX Mid & Small Cap Factor-Weighted Ind	2,497.41 €	2,508.87	-11.46	-0.46%	2,486.48	2,518.02	2,028.59	3,205.70	-16.07% €
ATHEX Select Index Plus	2,452.25 #	2,446.19	6.06	0.25%	2,440.35	2,465.45	1,698.34	3,182.42	-18.20% €
ATHEX Select Index	2,348.22 #	2,342.43	5.79	0.25%	2,329.23	2,366.52	1,734.15	3,581.16	-28.25% €
FTSE/Athex Market Index	372.93 €	374.61	-1.68	-0.45%	371.47	374.65	282.92	587.56	-34.44% €
FTSE Med Index	3,636.79 #	3,619.75	17.04	0.47%			3,062.99	5,342.28	-26.96% €
Athex Composite Index Total Return Index	1,046.46 €	1,049.56	-3.10	-0.30%	1,042.90	1,050.62	770.25	1,557.05	-30.03% €
FTSE/Athex Large Cap Total Return	2,277.92 €	2,280.77	-2.85	-0.12%			1,760.89	3,542.27	-33.26% €
FTSE/Athex Mid Cap Total Return	1,069.03 #	1,062.77	6.26	0.59%			818.92	1,582.98	-26.62% €
FTSE/ATHEX-CSE Banking Total Return Index	199.65 €	200.37	-0.72	-0.36%			176.97	588.56	-65.97% €
Hellenic Mid & Small Cap Index	967.47 #	963.83	3.64	0.38%	961.72	970.74	701.19	1,312.90	-22.82% €
FTSE/Athex Banks	301.15 €	302.23	-1.08	-0.36%	298.72	305.08	263.25	889.92	-65.98% €
FTSE/Athex Insurance	1,510.79 ~	1,510.79	0.00	0.00%	1,498.83	1,522.75	1,076.29	2,088.80	-25.39% €
FTSE/Athex Financial Services	560.76 €	570.76	-10.00	-1.75%	555.33	575.21	548.44	1,123.81	-43.75% €
FTSE/Athex Industrial Goods & Services	2,247.21 #	2,217.99	29.22	1.32%	2,213.86	2,264.30	1,302.84	2,712.84	-12.27% €
FTSE/Athex Retail	46.32 #	46.31	0.01	0.02%	46.09	46.55	38.18	75.77	-33.49% €
FTSE/ATHEX Real Estate	3,767.87 €	3,790.88	-23.01	-0.61%	3,731.97	3,822.95	2,945.19	5,826.74	-31.06% €
FTSE/Athex Consumer Goods & Services	7,829.11 #	7,736.57	92.54	1.20%	7,687.24	7,924.95	5,596.91	10,280.00	-20.19% €
FTSE/Athex Food & Beverage	8,001.20 €	8,130.32	-129.12	-1.59%	7,954.26	8,130.95	5,768.28	13,004.12	-28.97% €
FTSE/Athex Basic Resources	4,117.39 #	4,031.44	85.95	2.13%	4,031.44	4,189.53	2,713.19	7,435.44	-36.24% €
FTSE/Athex Construction & Materials	2,160.56 #	2,153.72	6.84	0.32%	2,141.73	2,175.65	1,403.78	3,344.96	-29.92% €
FTSE/Athex Energy	2,502.31 €	2,544.46	-42.15	-1.66%	2,502.18	2,550.59	2,268.39	5,154.35	-50.44% €
FTSE/Athex Travel & Leisure	1,271.12 #	1,255.14	15.98	1.27%	1,250.82	1,272.60	904.20	2,084.49	-34.47% €
FTSE/Athex Technology	833.89 #	830.28	3.61	0.43%	817.60	833.97	537.98	1,029.21	-7.39% €
FTSE/Athex Telecommunications	3,458.51 €	3,528.06	-69.55	-1.97%	3,442.11	3,533.41	2,480.07	3,960.95	-11.89% €
FTSE/Athex Utilities	3,676.72 #	3,659.64	17.08	0.47%	3,642.24	3,695.37	1,865.80	3,883.61	15.42% #
FTSE/Athex Health Care	417.53 #	411.51	6.02	1.46%	411.51	417.53	395.48	508.96	-17.29% €
Athex All Share Index	151.91 €	152.68	-0.78	-0.51%	151.91	151.91	122.81	223.49	-29.56% €
Hellenic Corporate Bond Index	118.30 €	118.39	-0.09	-0.08%			106.56	121.22	-1.64% €
Hellenic Corporate Bond Price Index	91.78 €	91.87	-0.10	-0.11%			84.04	96.15	-4.11% €

Note 1: FTSE/Med 100, Hellenic Corporate Bond Price Index and Hellenic Corporate Bond Index closing prices refer to the previous trading day of 25/09/2020.

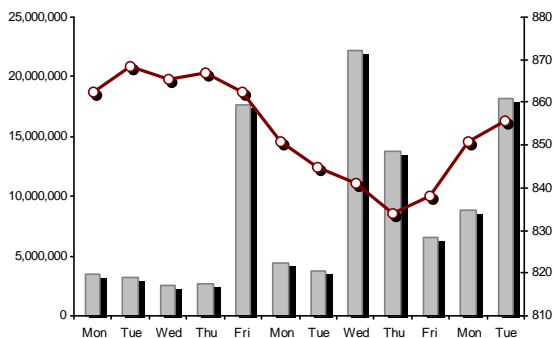
Note 2: The Hellenic Mid & Small Cap Index is a Customized index calculated by the Athens Exchange.

Athex Indices

FTSE/Large Cap

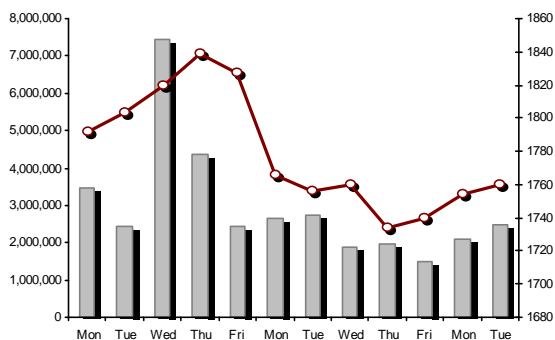


29/09/2020: -0.12% FTSE/Athex Mid Cap Index

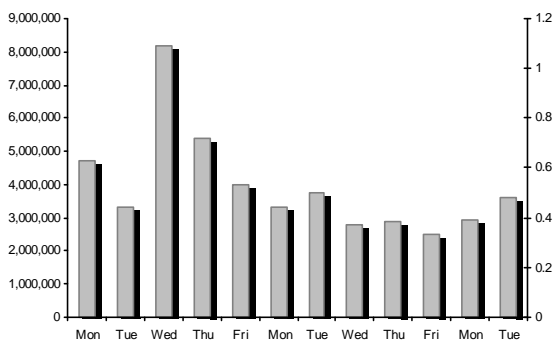


29/09/2020: 0.59%

FTSE/ATHEX Global Traders Index Plus

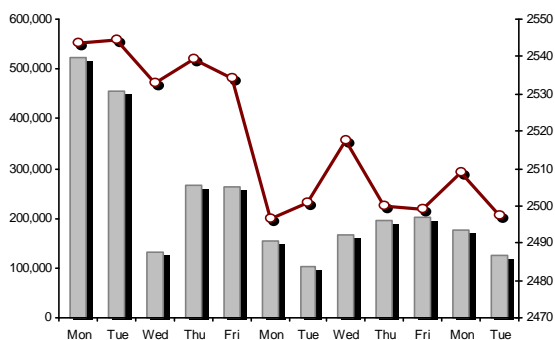


29/09/2020: 0.35% FTSE/ATHEX Global Traders Index

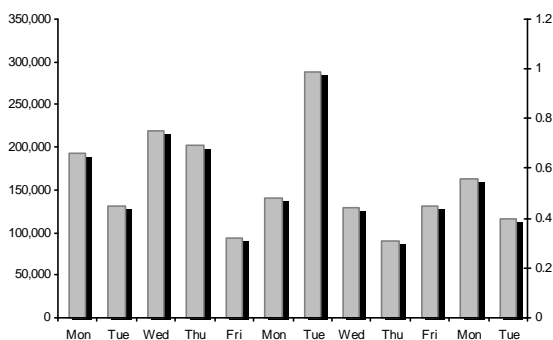


FTSE/ATHEX Mid & Small Cap Factor-Weighted Index

29/09/2020: -0.46%



ATHEX Mid & SmallCap Price Index



Indices volume of transactions

Indices closing prices

## Analytic Figures for Athex Market's Boards and Categories

	Total Traded Securities	Main Market	Surveillance	Exchange Traded Funds (ETFs)
Totals	113	100	12	1
Gain / Lose / Same:	38 / 56 / 19	33 / 53 / 14	4 / 3 / 5	1 / 0 / 0
Athex Capitalisation (mill. €) **	43,256.42	42,998.18	258.24	
Daily Average Trans/ons Value(thou.€)	62,603.15	62,568.84	71.89	44.76
Transactions Value	35,531.99	35,460.00	68.99	3.00
Main Board:	32,797.37	32,725.38	68.99	3.00
Blocks Board 6_2_3:	2,734.62	2,734.62	0.00	0.00
Forced Sales Board:	0.00	0.00	0.00	0.00
Special Terms Board:	0.00	0.00	0.00	0.00
Daily Average Transactions Volume	40,912,617	40,438,951	497,975	2,412
Transactions Volume	31,625,129	30,929,511	695,418	200
Main Board:	31,323,993	30,628,375	695,418	200
Blocks Board 6_2_3:	301,136	301,136	0	0
Forced Sales Board:	0	0	0	0
Special Terms Board:	0	0	0	0
Daily Average Number of Trades	31,750	31,615	133	3
Number of Trades	22,650	22,473	176	1
Main Board:	22,647	22,470	176	1
Blocks Board 6_2_3:	3	3	0	0
Forced Sales Board:	0	0	0	0
Special Terms Board:	0	0	0	0

## Trading Details by Athex Sectors and Financial Instruments (ETFs)

Code	Sectors	Gain / Lose / Same	Number of Trades	Transactions Volume	Transactions Value	% of Total Trans. Value
3010	- Banks	2 / 4 / 0	4,465	8,150,563	4,714,767.78	13.27%
5510	- Basic Resources	3 / 8 / 0	589	238,872	414,278.19	1.17%
5010	- Construction & Materials	4 / 4 / 2	1,652	846,833	1,344,237.63	3.78%
4020	- Consumer Products & Services	3 / 3 / 2	833	132,870	1,121,964.94	3.16%
6010	- Energy	0 / 3 / 0	1,644	214,211	1,757,859.46	4.95%
12000	- Financial Instruments	1 / 0 / 0	1	200	3,004.00	0.01%
3020	- Financial Services	0 / 3 / 0	1,692	16,707,786	589,664.06	1.66%
4510	- Food Beverage & Tobacco	3 / 3 / 1	194	41,365	364,961.04	1.03%
2010	- Health Care	1 / 0 / 2	12	5,358	6,516.84	0.02%
5020	- Industrial Goods & Service	6 / 8 / 2	2,195	1,004,631	3,632,741.20	10.22%
3030	- Insurance	0 / 0 / 1	83	38,100	144,455.50	0.41%
4030	- Media	0 / 1 / 1	9	2,410	536.67	0.00%
4520	- Personal Care, Drug & Grocery Stores	1 / 2 / 0	133	20,352	132,844.97	0.37%
3510	- Real Estate	1 / 5 / 2	595	159,288	760,283.30	2.14%
4040	- Retail	2 / 3 / 1	553	333,951	957,511.18	2.69%
1010	- Technology	3 / 3 / 2	240	50,186	171,180.87	0.48%
1510	- Telecommunications	2 / 2 / 1	3,637	1,467,245	9,232,572.72	25.98%
4050	- Travel & Leisure	3 / 2 / 2	1,427	931,933	4,645,589.05	13.07%
6510	- Utilities	3 / 2 / 0	2,696	1,278,975	5,537,021.38	15.58%

## Top 10 best &amp; worst performing Shares

## Main Market

With positive Price change	Closing price	change	With negative Price change	Closing price	change
INTRACOM HOLDINGS (CR)	0.715	9.33% #	MARFIN INVESTMENT GROUP (CR)	0.026	-13.33% €
PLAISIO COMPUTERS SA (CR)	3.1	6.16% #	CRETE PLASTICS SA (CR)	13.35	-3.26% €
ADMIE (IPTO) HOLDING S.A. (CR)	2.31	5.00% #	AEGEAN AIRLINES (CR)	3.235	-2.56% €
CENERGY HOLDINGS (CB)	1.044	4.40% #	HELLENIC PETROLEUM (CR)	4.63	-2.53% €
VIOHALCO SA/NV (CB)	2.5	2.88% #	OTE (CR)	12.53	-2.11% €
INTRACOM CONSTR. (CR)	1.24	2.48% #	PIRAEUS BANK (CR)	1.0655	-1.71% €
ELLAKTOR (CR)	1.371	1.93% #	INTERCONTINENTAL (CR)	5.8	-1.70% €
MYTILINEOS (CR)	9.13	1.56% #	ELVALHALCOR (CR)	1.298	-1.67% €
OPAP (CR)	8.11	1.50% #	CC HBC AG (CR)	21.34	-1.61% €
PROFILE SA (CR)	3.87	1.31% #	ELTON SA (CR)	1.25	-1.58% €
With the highest Transactions Value	Value (thou. €)	change	With the highest Transactions Volume	Volume	change
OTE (CR)	8,689.16	-2.11% €	MARFIN INVESTMENT GROUP (CR)	16,655,012	-13.33% €
OPAP (CR)	4,399.25	1.50% #	ALPHA BANK (CR)	3,753,636	-0.62% €
MYTILINEOS (CR)	2,989.26	1.56% #	EUROBANK HOLDINGS (CR)	2,717,960	1.02% #
ALPHA BANK (CR)	1,920.85	-0.62% €	NATIONAL BANK (CR)	1,117,704	-1.38% €
TERNA ENERGY (CR)	1,814.51	0.36% #	INTRACOM HOLDINGS (CR)	766,038	9.33% #
PPC (CR)	1,739.62	-0.79% €	ADMIE (IPTO) HOLDING S.A. (CR)	719,747	5.00% #
ADMIE (IPTO) HOLDING S.A. (CR)	1,651.42	5.00% #	OTE (CR)	689,877	-2.11% €
MOTOR OIL (CR)	1,443.54	-1.20% €	OPAP (CR)	546,396	1.50% #
NATIONAL BANK (CR)	1,249.37	-1.38% €	PIRAEUS BANK (CR)	462,191	-1.71% €
EUROBANK HOLDINGS (CR)	994.07	1.02% #	ELLAKTOR (CR)	433,605	1.93% #

Note: Stocks that are not included in the "Low Dispersion" and "Under Supervision" categories, and the transactions value is more than 10,000 €.



## Derivatives Summary

	Number of Trades	Volume	Open Interest
<b>Index Futures</b>	<b>111</b>	<b>469</b>	<b>4,173</b>
FTSE/Athex Large Cap	111	469	4,173
<b>Stock Futures</b>	<b>1,241</b>	<b>16,897</b>	<b>285,711</b>
ADMIE (IPTO) HOLDING S.A. (CR)	116	1,390	5,963
ALPHA BANK (CR)	160	3,824	91,809
ATTICA BANK S.A. (CR)	3	7	225
CC HBC AG (CR)	1	2	350
CENERGY HOLDINGS (CB)	90	383	1,509
ELLAKTOR (CR)	74	560	7,237
EUROBANK HOLDINGS (CR)	60	2,125	43,252
EYDAP S.A. (CR)	0	0	150
FOURLIS (CR)	0	0	373
GEK TERNA (CR)	22	76	3,444
HELLENIC EXCHANGES-A.S.E. (CR)	2	3	2,000
HELLENIC PETROLEUM (CR)	9	22	1,585
INTRACOM HOLDINGS (CR)	46	294	929
JUMBO SA (CR)	28	62	292
LAMDA DEVELOPMENT SA (CR)	19	59	2,080
MARFIN INVESTMENT GROUP (CR)	83	2,653	48,103
MOTOR OIL (CR)	23	81	672
MYTILINEOS (CR)	77	324	4,144
NATIONAL BANK (CR)	106	2,742	38,064
OPAP (CR)	23	67	2,147
OTE (CR)	93	303	1,780
P.P.A. S.A. (CR)	0	0	304
PIRAEUS BANK (CR)	82	1,299	12,613
PPC (CR)	68	273	9,400
TERNA ENERGY (CR)	13	116	3,451
TITAN CEMENT (CB)	9	23	938
VIOHALCO SA/NV (CB)	34	209	2,897
<b>Index Options</b>	<b>11</b>	<b>18</b>	<b>1,363</b>
FTSE/Athex Large Cap	11	18	1,363
<b>Stock Options</b>	<b>14</b>	<b>94</b>	<b>1,067</b>
ALPHA BANK (CR)	0	0	7
NATIONAL BANK (CR)	0	0	453
OPAP (CR)	5	24	205
OTE (CR)	7	45	170
PIRAEUS BANK (CR)	1	20	0
PPC (CR)	1	5	232
<b>Total Derivatives Traded</b>	<b>1,377</b>	<b>17,478</b>	<b>292,314</b>

Number of Outstanding Securities	Nominal Value	Dividends [1]			Date of Last Dividend [2]	Date of Last Coupon Right	Note	Shares	Closing price	% change	Previous closing price/date	Open price	Price min	Price max	Last price	Avg price	Last Bid [7]	Last Ask [7]	P/E after tax	Year	Volume	Trades	Transactions Value[8]	Company Mkt Value (thou. €)	Year low	Year high	Sector[4]
		2017	2018	2019																							
1,543,699,381	0.300	---	---	---	07/04/2008	18/04/2017	---	ALPHA BANK (CR)	0.5138	-0.62	€ 0.517	28/09/2020	0.5196	0.506	0.5196	0.5138	0.51224444@0.513	2500@0.514	---	---	3,753,636	1,770	1,920,847.57	793,152.74	0.4832	1.928	30101010
461,254,013	0.300	---	---	---	04/06/2008	30/04/2018	---	ATTICA BANK S.A. (CR)	0.1726	-1.15	€ 0.1746	28/09/2020	0.172	0.1684	0.1758	0.1758	0.17163554@0.172	500@0.175	---	---	96,258	76	16,462.40	79,612.44	0.16	0.412	30101010
48,855,000	0.080	(0.275)	(0.375)	0.23	20/07/2020	25/06/2019	---	AUTOHELLAS SA (CR)	3.99	0.25	# 3.98	28/09/2020	3.92	3.91	3.99	3.99	3.96 500@3.97	695@4.00	---	---	33,558	142	132,886.22	194,931.45	3.08	8.28	40201040
190,162,681	---	---	---	---	07/12/2016	---	---	CENERGY HOLDINGS (CB)	1.044	4.40	# 1	28/09/2020	1.022	1	1.044	1.044	1.027 600@1.04	2500@1.05	---	---	193,998	342	199,176.32	198,529.84	0.585	1.51	50202010
370,251,684	6.70	0.54	2.57	0.62	02/07/2020	29/04/2013	---	CC HBC AG (CR)	21.34	-1.61	€ 21.69	28/09/2020	21.4	21.21	21.4	21.34	21.3 278@21.35	100@21.40	---	---	12,074	105	257,170.25	7,901,170.94	15.385	34.88	45101020
13,400,000	0.300	---	---	---	28/12/2015	18/01/2019	---	EPSILON NET (CR)	2.76	---	~ 2.76	28/09/2020	2.7	2.7	2.78	2.76	2.75 150@2.72	414@2.76	---	---	3,932	16	10,814.94	36,984.00	1.6	2.96	10101015
3,709,161,852	0.220	---	---	---	02/05/2008	20/05/2019	---	EUROBANK HOLDINGS (CR)	0.3659	1.02	# 0.3622	28/09/2020	0.365	0.361	0.3699	0.3659	0.366 2@0.366	1@0.366	---	---	2,717,960	979	994,070.59	1,357,182.32	0.282	0.924	30101010
52,004,961	0.810	---	---	---	21/06/2010	23/07/2019	---	FOURLIS (CR)	3.845	-0.39	€ 3.86	28/09/2020	3.86	3.835	3.88	3.845	3.845 200@3.84	4083@3.85	---	---	167,961	359	645,757.53	199,959.08	2.745	5.98	40401010
136,059,759	0.880	0.36	0.39	0.062	30/06/2020	05/03/2014	---	JUMBO SA (CR)	14.75	1.31	# 14.56	28/09/2020	14.57	14.46	14.95	14.75	14.728 3139@14.75	10@14.80	---	---	65,512	597	964,839.20	2,006,881.45	9.94	19.48	40203045
176,736,715	0.300	---	---	---	30/05/2007	27/11/2019	---	LAMDA DEVELOPMENT SA (CR)	5.48	-0.54	€ 5.51	28/09/2020	5.5	5.41	5.56	5.48	5.467 1180@5.47	315@5.49	---	---	125,716	433	687,298.21	968,517.20	4.26	8.85	35101010
939,510,748	0.300	---	---	---	26/04/2007	29/08/2014	---	MARFIN INVESTMENT GROUP (CR)	0.026	-13.33	€ 0.03	28/09/2020	0.03	0.0213	0.0302	0.026	0.026 7000@0.026	118000@0.027	---	---	16,655,012	1,474	439,255.34	24,427.28	0.0213	0.1296	30202000
82,447,868	---	---	---	---	23/07/2019	---	---	TITAN CEMENT (CB)	10.9	---	~ 10.9	28/09/2020	10.88	10.8	11	10.9	10.901 879@10.90	20@10.96	---	---	27,226	206	296,782.48	898,681.76	8.55	19.54	50101030
259,189,761	---	---	---	0.01	07/09/2020	26/02/2016	---	VIOHALCO SA/NV (CB)	2.5	2.88	# 2.43	28/09/2020	2.445	2.43	2.54	2.5	2.459 250@2.47	3979@2.50	---	---	127,558	339	313,686.72	647,974.40	1.47	3.99	55102015
232,000,000	2.12	---	0.0601	0.0889	24/08/2020	19/06/2017	---	ADMIE (IPTO) HOLDING S.A. (CR)	2.31	5.00	# 2.2	28/09/2020	2.2	2.18	2.33	2.31	2.294 2500@2.31	331@2.32	9.97	2019	719,747	1,105	1,651,419.99	535,920.00	1.57	2.775	65101015
71,417,100	0.650	0.55	0.6	---	03/06/2019	27/06/2014	---	AEGEAN AIRLINES (CR)	3.235	-2.56	€ 3.32	28/09/2020	3.32	3.235	3.32	3.235	3.264 10040@3.24	200@3.24	---	---	64,971	348	212,046.26	231,034.32	3.2	9.08	40501010
103,423,291	0.570	---	---	---	01/08/2011	19/04/2016	---	GEK TERNA (CR)	6.15	---	~ 6.15	28/09/2020	6.11	6.07	6.21	6.15	6.159 199@6.13	500@6.18	---	---	44,530	287	274,247.31	636,053.24	3.705	8.93	50101010
232,000,000	2.48	---	---	---	20/07/2015	12/12/2001	---	PPC (CR)	5.05	-0.79	€ 5.09	28/09/2020	5.06	4.984	5.11	5.05	5.029 1015@5.01	1000@5.06	---	---	345,911	969	1,739,622.37	1,171,600.00	1.453	5.285	65101015
914,715,153	3.00	---	---	---	16/05/2008	29/08/2018	---	NATIONAL BANK (CR)	1.1085	-1.38	€ 1.124	28/09/2020	1.134	1.1085	1.134	1.1085	1.118 1493@1.11	199@1.12	---	---	1,117,704	924	1,249,365.47	1,013,961.75	0.815	3.072	30101010
214,272,003	1.03	---	---	---	05/07/2011	22/07/2019	---	ELLAKTOR (CR)	1.371	1.93	# 1.345	28/09/2020	1.331	1.321	1.387	1.371	1.355 1600@1.37	1000@1.38	---	---	433,605	812	587,682.82	293,766.92	0.512	1.968	50101010
60,348,000	0.490	0.0502	0.05	0.07	04/06/2020	05/08/2020	---	HELLENIC EXCHANGES-A.S.E. (CR)	2.79	-0.36	€ 2.8	28/09/2020	2.825	2.78	2.83	2.79	2.798 4759@2.79	498@2.80	---	---	52,210	213	146,070.77	168,370.92	2.54	5.05	30202015
305,635,185	2.18	0.4	0.75	0.5	29/06/2020	01/10/2003	---	HELLENIC PETROLEUM (CR)	4.63	-2.53	€ 4.75	28/09/2020	4.75	4.6	4.75	4.63	4.663 10@4.62	1000@4.65	---	---	67,134	488	313,013.54	1,415,090.91	4.4	8.8	60101000
106,500,000	0.600	0.2	0.27	0.38	30/06/2020	28/01/2000	---	EYDAP S.A. (CR)	6.59	-0.90	€ 6.65	28/09/2020	6.6	6.59	6.67	6.59	6.622 2284@6.58	250@6.65	---	---	49,618	302	328,580.82	701,835.00	4.95	7.78	65102030
110,782,980	0.750	1.3	1.3	1.1507	24/06/2020	04/11/2013	---	MOTOR OIL (CR)	9.9	-1.20	€ 10.02	28/09/2020	10.02	9.9	10.1	9.9	9.956 428@9.90	95@9.96	---	---	144,992	1,145	1,443,540.39	1,096,751.50	8.6	21.24	60101020
142,891,161	0.970	0.32	0.36	0.3617	24/06/2020	07/07/2017	---	MYTILINEOS (CR)	9.13	1.56	# 8.99	28/09/2020	9	8.96	9.2	9.13	9.073 276@9.12	49@9.15	---	---	329,477	1,252	2,989,264.92	1,304,596.30	4.896	10.39	50203000
25,000,000	2.00	0.1712	0.424	0.5388	27/07/2020	08/08/2003	---	P.P.A. S.A. (CR)	16.36	0.12	# 16.34	28/09/2020	16.32	16.32	16.78	16.36	16.413 3@16.36	1@16.64	11.54	2019	3,773	62	61,926.36	409,000.00	12.96	23	50206060
341,426,387	0.300	0.4	0.7	0.3	21/07/2020	25/04/2001	---	OPAP (CR)	8.11	1.50	# 7.99	28/09/2020	7.99	7.97	8.12	8.11	8.051 1978@8.11	5005@8.12	---	---	546,396	1,006	4,399,247.82	2,768,968.00	5.4021	12.653	40501020
470,174,576	2.83	0.3529	0.5245	0.5554	09/07/2020	18/06/1998	---	OTE (CR)	12.53	-2.11	€ 12.8	28/09/2020	12.72	12.47	12.82	12.53	12.595 3008@12.52	10764@12.54	---	---	689,877	2,762	8,689,157.92	5,891,287.44	9.01	14.39	15102015
436,659,164	6.00	---	---	---	16/05/2008	31/07/2017	---	PIRAEUS BANK (CR)	1.0655	-1.71	€ 1.084	28/09/2020	1.081	1.065	1.0965	1.0655	1.075 57900@1.07	180@1.07	---	---	462,191	650	496,986.53	465,260.34	0.92	3.394	30101010
69,877,484	0.780	(0.14)	0.1489	0.167	11/05/2020	13/06/2018	---	GR. SARANTIS S.A. (CR)	8.5	-0.58	€ 8.55	28/09/2020	8.65	8.5	8.66	8.5	8.561 19044@8.50	490@8.58	---	---	14,175	107	121,349.69	593,958.61	5.2	9.2	45201020
120,148,358	0.300	0.0419	---	0.1745	22/06/2020	05/03/2020	---	TERNA ENERGY (CR)	11.2	0.36	# 11.16	28/09/2020	11.1	11.04	11.3	11.2	11.134 1@11.18	1000@11.28	---	---	162,963	313	1,814,509.52	1,345,661.61	5.44	12.4	65101010

## Main Market - Medium Liquidity Class

13,126,020	0.430	---	---	---	08/07/2010	04/09/2020	---	AS COMPANY SA (CR)	1.8	0.56	# 1.79	28/09/2020	1.8	1.775	1.835	1.8	1.797 10000@1.77	16@1.84	---	---	153,753	120	276,234.34	23,626.84	1.69	2.99	40401030
136,014,137	0.040	---	---	---	01/07/2008	21/02/2020	---	AVE (CR)	0.234	-0.43	€ 0.235	28/09/2020	0.23	0.23	0.234	0.234	0.233 8000@0.225	745@0.234	---	---	2,260	7	527.59	31,827.31	0.12	0.38	40301010
35,764,593	2.10	0.035	0.055	0.039	01/04/2020	25/11/2019	---	BRIQ PROPERTIES (CR)	1.68	0.30	# 1.675	28/09/2020	1.685	1.67	1.685	1.68	1.679 200@1.65	758@1.68	4.11	2019	5,660	18	9,502.00	60,084.52	1.5	2.3	35102030
15,816,009	0.300	---	---	---	01/07/2009	17/07/2000	---	BYTE COMPUTER SA (CR)	0.896	-0.66	€ 0.902	28/09/2020	0.91	0.88	0.92	0.896	0.89 302@0.892	250@0.898	---	---	8,295	34	7,386.00	14,171.14	0.515	1.24	10101010
101,123,806	0.360	---	---	---	22/07/2010	28/06/2011	---	CENTRIC HOLDINGS (CR)	0.22	-2.22	€ 0.225	28/09/2020	0.22	0.216	0.221	0.22	0.218 2500@0.218	5360@0.220	---	---	18,240	16	3,984.30	22,247.24	0.1505	0.28	40203040
784,500	10.00</																										

## Daily Official List

Year: 141 Trading Day No: 185

## Section 2: Analytic Figures of Shares Transactions

Tuesday, 29 September, 2020

Number of Outstanding Securities	Nominal Value	Dividends [1]			Date of Last Coupon		Note	Shares	Closing price	% change	Previous closing price/date	Open price	Price min	Price max	Last price	Avg price	Last Bid [7]	Last Ask [7]	P/E after tax	Year	Volume	Trades	Transactions Value[8]	Company Mkt Value (thou. €)	Year low	Year high	Sector[4]		
		2017	2018	2019	Dividend [2]	Right																							
20,578,374	0.620	0.1	---	0.04	20/07/2020	18/05/2015	---	INFORM P. LYKOS (CR)	1.075	-2.27	€	1.1	28/09/2020	1.11	1.075	1.11	1.075	1.084	869@1.08	76@1.11	---	---	3,010	10	3,263.41	22,121.75	0.66	1.7	50205030
76,000,000	1.00	---	---	---	03/07/2007	17/09/2018	---	INTRACOM HOLDINGS (CR)	0.715	9.33	#	0.654	28/09/2020	0.665	0.665	0.731	0.715	0.704	156@0.714	850@0.717	---	---	766,038	860	539,496.29	54,340.00	0.28	0.915	15101010
30,477,156	0.300	---	---	---	12/08/2008	17/10/2017	---	INTRACOM CONSTR. (CR)	1.24	2.48	#	1.21	28/09/2020	1.235	1.21	1.245	1.24	1.228	1@1.22	400@1.24	---	---	21,418	51	26,295.40	37,791.67	0.58	1.8	50101010
4,419,616	1.58	---	---	---	21/07/2011	04/03/2015	---	MEDICON S.A (CR)	1.74	---	~	1.74	28/09/2020	---	---	---	---	---	10@1.64	9@1.73	---	---	---	---	---	7,690.13	1.5	2.98	20102010
468,700	0.73	4.869	---	---	25/04/2019	21/05/2004	---	MERMEREN KOMB. A.D. PR. (GDR)	48.3	---	~	48.3	28/09/2020	---	---	---	---	---	10@45.10	20@47.50	1.12	2019	---	---	---	22,638.21	40	67.8	55102000
10,500,000	0.950	---	---	---	24/06/2008	30/06/2017	---	MEVACO SA (CR)	1.26	-1.56	€	1.28	28/09/2020	1.25	1.25	1.27	1.26	1.265	970@1.26	387@1.28	29.63	2019	2,236	7	2,829.30	13,230.00	1.21	1.87	55102015
3,953,090	0.300	0.16	0.15	0.5	04/06/2020	05/12/2012	---	PAPERPACK (CR)	5.3	---	~	5.3	28/09/2020	---	---	---	---	---	249@5.20	211@5.40	10.72	2019	---	---	---	20,951.38	3.98	6.1	50203030
11,812,193	0.470	---	---	---	26/05/2020	07/04/2020	---	PROFILE SA (CR)	3.87	1.31	#	3.82	28/09/2020	3.87	3.84	3.94	3.87	3.88	700@3.82	550@3.87	---	---	17,722	64	68,764.57	45,713.19	2.12	4.34	10101010
27,345,120	0.280	---	---	---	18/07/2005	26/02/2014	---	QUALITY & RELIABILITY SA (CR)	0.216	0.93	#	0.214	28/09/2020	0.216	0.216	0.216	0.216	0.216	2000@0.207	2190@0.214	---	---	1,010	4	218.16	5,906.55	0.17	0.305	10101010
35,740,896	1.33	---	---	---	05/09/2008	21/07/2020	---	QUEST HOLDINGS (CR)	8.56	0.47	#	8.52	28/09/2020	8.46	8.32	8.56	8.56	8.441	100@8.40	50@8.54	---	---	8,737	55	73,744.96	305,942.07	5.6	9.76	10101010
57,434,884	1.31	---	---	---	05/06/2008	12/06/2009	---	REDS S.A. (CR)	1.12	-2.18	€	1.145	28/09/2020	1.1	1.1	1.15	1.12	1.132	1491@1.11	500@1.13	---	---	3,242	19	3,669.30	64,327.07	0.752	1.47	35101010
6,456,530	1.08	---	---	0.065	09/07/2020	02/08/2010	---	SPACE HELLAS SA (CR)	4.56	3.40	#	4.41	28/09/2020	4.57	4.48	4.57	4.56	4.505	548@4.32	293@4.55	---	---	40	6	180.21	29,441.78	3.02	5.88	15101010
15,627,315	0.300	---	---	---	16/11/1992	24/07/2019	---	UNIBIOS (CR)	0.228	-0.44	€	0.229	28/09/2020	0.231	0.222	0.231	0.229	0.225	100@0.222	2000@0.228	---	---	37,200	28	8,366.09	3,563.03	0.186	0.463	50204000
144,321,516	0.300	---	---	---	01/07/2011	22/01/2020	---	AVAX S.A. (CR)	0.4075	-0.12	€	0.408	28/09/2020	0.4195	0.4075	0.4195	0.4075	0.413	1500@0.403	2146@0.408	---	---	21,254	44	8,773.50	58,811.02	0.2225	0.64	50101010
32,413,681	0.370	---	---	---	15/07/2009	11/05/2000	---	ALUMIL (CR)	0.782	-2.01	€	0.798	28/09/2020	0.798	0.766	0.798	0.782	0.774	20@0.768	976@0.784	---	---	2,512	23	1,943.06	25,347.50	0.431	1.62	55102035
24,060,000	0.300	0.01	0.015	0.035	05/05/2020	01/07/2019	---	GEN. COMMERCIAL & IND.SA (CR)	0.7	-1.41	€	0.71	28/09/2020	0.7	0.7	0.7	0.7	0.7	555@0.700	100@0.720	15.13	2019	1,945	6	1,361.50	16,842.00	0.54	1.13	50205010
34,720,000	0.310	---	---	---	16/06/2010	01/08/2007	---	DROMEAS SA (CR)	0.376	-1.05	€	0.38	28/09/2020	0.37	0.37	0.376	0.376	0.37	100@0.324	3978@0.374	---	---	480	4	177.64	13,054.72	0.245	0.485	40202015
13,673,200	0.880	---	---	---	18/07/2008	26/07/2001	---	EVROFARMA SA (CR)	0.73	-2.67	€	0.75	28/09/2020	0.716	0.69	0.774	0.73	0.716	1160@0.704	200@0.770	---	---	11,519	43	8,243.90	9,981.44	0.61	1.375	45102020
27,848,000	0.300	0.0034	---	---	20/08/2018	02/09/2003	---	NEWSPHONE HELLAS SA (CR)	0.47	---	~	0.47	28/09/2020	0.47	0.47	0.47	0.47	0.47	47262452@0.470	35505@0.472	---	---	290	1	136.30	13,088.56	0.199	0.53	15102015
11,250,000	0.520	---	0.04	---	22/07/2019	09/11/2015	---	EKTER SA (CR)	0.77	-0.52	€	0.774	28/09/2020	0.761	0.755	0.8	0.77	0.766	170@0.762	1138@0.775	---	---	8,333	38	6,379.69	8,662.50	0.54	1.33	50101010
18,410,839	1.00	---	---	---	07/07/2009	10/09/2010	---	ELASTRON (CR)	0.854	-0.70	€	0.86	28/09/2020	0.854	0.852	0.854	0.852	0.854	200@0.852	100@0.876	---	---	1,900	5	1,622.20	15,722.86	0.6	1.58	55102010
375,241,586	0.390	---	0.03	0.03	01/06/2020	14/07/2006	---	ELVALHALCOR (CR)	1.298	-1.67	€	1.32	28/09/2020	1.324	1.282	1.324	1.298	1.302	35@1.30	250@1.31	---	---	62,335	108	81,173.13	487,063.58	0.83	1.836	55102015
31,734,530	1.60	---	---	---	09/07/2007	19/07/2006	---	ELGEKA SA (CR)	0.283	-1.05	€	0.286	28/09/2020	0.285	0.28	0.285	0.283	0.28	500@0.215	1999@0.283	---	---	1,082	3	303.46	8,980.87	0.214	0.565	45201010
19,864,886	5.60	0.672	0.672	0.672	26/03/2020	02/07/2008	---	BANK OF GREECE (CR)	13.22	0.61	#	13.14	28/09/2020	13.26	13.06	13.26	13.22	13.161	60@13.12	114@13.22	---	---	2,814	66	37,035.22	262,613.79	11.9	16.68	30101010
26,730,187	0.520	0.04	0.06	0.04	27/07/2020	01/08/2017	---	ELTON SA (CR)	1.25	-1.58	€	1.27	28/09/2020	1.275	1.22	1.275	1.25	1.245	530@1.25	260@1.26	---	---	19,314	99	24,044.21	33,412.73	1.02	1.85	50205010
30,000,000	0.050	(0.0217)	(0.03)	---	28/06/2019	11/06/2020	---	ENTERSOFT (CR)	1.8	---	~	1.8	28/09/2020	1.77	1.77	1.8	1.8	1.789	700@1.77	9@1.80	---	---	2,483	16	4,441.46	54,000.00	0.9	1.89	10101015
36,300,000	1.12	0.221	0.126	0.268	09/07/2020	12/12/2007	---	THESSALONIKA WATER & SEWERAGE	3.93	1.29	#	3.88	28/09/2020	3.88	3.88	3.93	3.93	3.925	55@3.91	490@3.93	---	---	736	7	2,888.68	142,659.00	3.06	5	65102030
27,503,677	0.630	0.12	0.13	0.2446	06/05/2020	18/10/1999	---	EUROPEAN RELIANCE INSUR. (CR)	3.79	---	~	3.79	28/09/2020	3.77	3.75	3.82	3.79	3.791	621@3.77	74@3.78	---	---	38,100	83	144,455.50	104,238.94	2.7	5.24	30302010
114,320,400	0.100	(0.0175)	(0.0575)	---	23/03/2020	05/08/2019	---	IKTINOS HELLAS SA (CR)	0.508	-0.39	€	0.51	28/09/2020	0.508	0.506	0.517	0.508	0.508	500@0.506	682@0.509	---	---	273,467	188	138,999.23	58,074.76	0.506	1.206	50101035
8,226,132	0.900	---	---	---	15/05/2009	13/10/2014	---	ILYDA S.A. (CR)	0.5	-6.54	€	0.535	28/09/2020	0.486	0.486	0.51	0.5	0.494	199@0.490	3609@0.510	---	---	5,999	40	2,963.97	4,113.07	0.171	0.61	10101015
8,298,467	0.400	---	---	---	30/08/1993	08/05/2013	---	IDEAL GROUP SA (CR)	1.45	-0.69	€	1.46	28/09/2020	1.44	1.4	1.45	1.45	1.418	80@1.37	99@1.45	---	---	2,008	11	2,846.81	12,032.78	0.82	1.63	10102030
34,986,430	0.440	---	---	---	25/07/2008	23/02/2010	---	INTERWOOD-XYLEMPORIA (CR)	0.149	---	~	0.149	28/09/2020	---	---	---	---	---	2000@0.105	3793@0.148	---	---	---	---	---	5,906.02	0.108	0.187	50205010
8,424,900	0.500	---	---	---	12/07/2010	04/07/2019	---	INTERTECH SA (CR)	0.584	---	~	0.584	28/09/2020	---	---	---	---	---	5000@0.530	178@0.578	---	2019	---	---	---	4,920.14	0.402	0.925	50205010
19,804,134	0.300	---	---	---	01/07/2004	06/11/2017	---	KEKROPS SA (CR)	2.21	-1.12	€	2.235	28/09/2020	2.21	2.195	2.29	2.21	2.231	672@2.21	550@2.24	---	2019	15,727	102	35,086.64	43,767.14	0.87	2.8	35101010
40,219,218	0.260	---	---	---	14/09/2020	10/06/2019	---	KLOUKINAS - LAPPAS SA (CR)	0.512	0.39	#	0.51	28/09/2020	0.512	0.512	0.512	0.512	0.512	120@0.498	900@0.506	---	---	100	1	51.20	20,592.24	0.352	0.834	50101010
11,510,102	0.890	---	---	---	24/06/2005	06/10/1999	---	NAFPAKTOS TEXTILE (CR)	0.615	-7.52	€	0.665	28/09/2020	0.695	0.615	0.695	0.615	0.638	1500@0.560	2165@0.615	---</								

Number of Outstanding Securities	Nominal Value	Dividends [1]			Date of Last Coupon		Note	Shares	Closing price	% change	Previous closing price/date	Open price	Price min	Price max	Last price	Avg price	Last Bid [7]	Last Ask [7]	P/E after tax	Year	Volume	Trades	Transactions Value[8]	Company Mkt Value (thou. €)	Year low	Year high	Sector[4]	
		2017	2018	2019	Dividend [2]	Right																						
6,200,000	0.500	---	---	---	22/06/2010	01/11/1995	---	MINERVA KNITWEAR (CR)	0.244	1.67 #	0.24	28/09/2020	0.276	0.24	0.276	0.24	0.244	4592@0.195	488@0.244	---	---	560	2	136.56	1,512.80	0.164	0.775	40204020
9,819,370	0.690	---	---	---	14/08/2007	09/01/2004	---	MATHIOS REFRACTORY SA (CR)	0.34	-12.82 €	0.39	28/09/2020	0.32	0.32	0.384	0.34	0.339	100@0.330	1045@0.334	---	---	17,816	31	6,030.78	3,338.59	0.312	0.73	55101000
29,250,000	0.360	---	---	0.02	01/07/2020	25/04/2019	---	MOTODYNAMICS S.A. (CR)	0.82	-1.21 €	0.83	28/09/2020	0.82	0.82	0.82	0.82	0.82	423@0.822	2500@0.874	---	---	122	2	100.04	23,985.00	0.725	1.79	40401030
32,188,050	1.04	---	---	---	21/07/2008	20/01/2000	---	MOUZAKIS (CR)	0.33	-2.08 €	0.337	28/09/2020	0.337	0.32	0.337	0.33	0.324	200@0.321	627@0.330	---	---	10,690	26	3,459.79	10,622.06	0.256	0.515	55101020
10,080,000	3.00	0.45	0.57	1.17	06/07/2020	27/08/2001	---	TPA SA (CR)	21.2	---	21.2	28/09/2020	21.3	21.2	21.3	21.2	21.225	20@21.10	5@21.20	12.99	2019	395	4	8,384.00	213,696.00	18.05	28.2	50206060
4,971,466	1.46	---	---	---	04/07/2007	08/10/2003	---	PAIRIS SA (CR)	0.272	1.49 #	0.268	28/09/2020	0.272	0.272	0.272	0.272	0.272	324@0.202	160@0.272	---	---	40	1	10.88	1,352.24	0.188	0.5	50203030
25,118,410	0.540	---	---	---	17/08/2000	08/09/2020	---	PAPOUTSANIS (CR)	2.19	0.46 #	2.18	28/09/2020	2.23	2.17	2.23	2.19	2.197	740@2.14	18394@2.19	49.77	2018	5,095	23	11,191.82	55,009.32	0.96	2.29	45201020
7,070,400	0.930	---	---	0.1013	24/08/2020	06/05/2016	---	PETROPOULOS PETROS (CR)	5	-0.99 €	5.05	28/09/2020	5.1	5	5.25	5	5.095	150@4.98	2579@5.00	---	---	45,296	128	230,794.75	35,352.00	3.82	8.05	50206015
22,075,665	0.330	0.07	0.07	0.02	02/07/2020	27/04/2015	---	PLAISIO COMPUTERS SA (CR)	3.1	6.16 #	2.92	28/09/2020	2.94	2.91	3.1	3.1	3.005	1140@3.06	2778@3.10	---	---	11,660	66	35,036.94	68,434.56	1.885	3.84	40401010
43,741,452	0.660	0.0471	0.0444	0.0458	17/07/2020	01/11/1999	---	THRACE PLASTICS SA (CR)	2.34	---	2.34	28/09/2020	2.35	2.33	2.37	2.34	2.351	22@2.34	300@2.38	---	---	21,420	90	50,367.38	102,355.00	1.23	2.44	50203015
21,912,599	0.300	---	---	---	11/04/2011	23/02/2007	---	REVOIL (CR)	0.618	-3.44 €	0.64	28/09/2020	0.668	0.618	0.668	0.618	0.626	200@0.584	15@0.618	4.51	2019	2,085	11	1,305.53	13,541.99	0.55	0.975	60101020
28,438,268	0.300	---	---	---	21/08/2006	24/11/1999	---	SPIROY AGRICULTURE SA (CR)	0.167	0.60 #	0.166	28/09/2020	0.163	0.163	0.1705	0.167	0.168	148@0.167	500@0.169	---	---	922	8	154.69	4,749.19	0.093	0.28	45102010
40,693,350	5.00	---	---	---	03/07/2006	26/05/2015	---	TECHNICAL OLYMPIC SA (CR)	1.4	-1.13 €	1.416	28/09/2020	1.43	1.39	1.43	1.4	1.403	200@1.39	369@1.40	---	---	14,080	69	19,749.82	56,970.69	1.15	2.68	40202010
1,524,000	0.300	---	---	---	06/07/2007	06/02/2013	---	GIRAKIAN PROFIL (CR)	2.08	-13.33 €	2.4	28/09/2020	2.64	2.08	2.64	2.08	2.099	300@1.75	300@2.20	---	2019	418	7	877.24	3,169.92	1.2	4.28	55102010
10,203,575	0.730	---	---	---	16/07/2007	18/10/1999	---	FIERATEX SA (CR)	0.35	---	0.35	28/09/2020	---	---	---	---	---	2000@0.274	3875@0.350	---	2019	---	---	---	3,571.25	0.252	0.79	55101020
8,340,750	1.16	---	---	---	25/06/2009	17/09/2018	---	HAIDEMENOS SA (CR)	0.57	---	0.57	28/09/2020	---	---	---	---	---	---	152@0.565	---	2019	---	---	---	4,754.23	0.432	1.09	50205030

## Main Market - Low Liquidity Class

14,000,000	4.15	---	---	---	23/04/2010	29/06/1999	---	ALPHA REAL ESTATE SA(CR)	5.95	-1.65 €	6.05	28/09/2020	6	5.85	6	5.95	5.952	15@5.85	10@6.05	---	---	120	5	714.25	83,300.00	5.2	7.8	35101015
215,805,843	0.300	---	0.05	---	17/01/2020	29/12/2010	---	ATTICA HOLDINGS (CR)	0.896	---	0.896	28/09/2020	0.87	0.87	0.87	0.87	0.87	5100@0.870	200@0.870	---	---	100	1	87.00	193,362.04	0.782	1.465	40501015
9,907,500	0.300	---	---	---	06/10/2005	13/02/2002	---	CPI SA (CR)	0.43	---	0.43	28/09/2020	---	---	---	---	---	---	1000@0.422	---	2018	---	---	---	4,260.23	0.316	0.61	10102030
11,720,024	0.540	---	---	0.0632	13/07/2020	30/08/2019	---	FLEXOPACK SA (CR)	8.25	3.13 #	8	28/09/2020	7.95	7.8	8.25	8.25	8.235	299@7.80	241@8.25	---	---	1,015	6	8,358.85	96,690.20	5.4	8.3	50203030
10,500,000	4.00	0.31	0.36	0.36	02/07/2020	02/08/2016	---	INTERCONTINENTAL (CR)	5.8	-1.70 €	5.9	28/09/2020	5.9	5.8	5.9	5.8	5.802	100@5.75	392@5.85	---	---	3,400	8	19,727.50	60,900.00	5.45	8.35	35102000
4,740,000	0.860	---	---	---	14/03/2003	---	---	LOGISMOS S.A. (CR)	0.61	---	0.61	28/09/2020	---	---	---	---	---	---	1400@0.670	---	2019	---	---	---	2,891.40	0.448	0.88	10101015
150,520,505	0.500	---	---	---	25/04/2014	10/06/2020	---	TRASTOR REAL EST. INV. CO.(CR)	0.8	---	0.8	28/09/2020	0.78	0.78	0.8	0.8	0.792	600@0.775	1500@0.790	25.39	2018	5,323	8	4,216.40	120,416.40	0.78	1.14	35102000
401,136	13.75	0.75	---	---	05/04/2018	24/09/2020	---	ANDROMEDA SA (CR)	21	---	21	28/09/2020	---	---	---	---	---	511@20.00	163@21.00	3.54	2019	---	---	---	8,423.86	18.8	27	30202010
15,300,000	0.300	---	---	---	30/07/2009	13/12/1999	---	ATTICA PUBLICATIONS SA (CR)	0.292	---	0.292	28/09/2020	---	---	---	---	---	500@0.274	1216@0.320	---	---	---	---	---	4,467.60	0.22	0.428	40301030
18,810,000	0.400	---	---	---	08/07/2010	14/11/2007	---	VARVERIS - MODA BAGNO SA (CR)	0.32	---	0.32	28/09/2020	0.32	0.32	0.334	0.334	0.331	2600@0.290	1335@0.330	---	---	255	2	84.33	6,019.20	0.21	0.64	40401025
23,986,500	1.05	---	---	---	26/06/2009	15/03/2000	---	BIOKARPET S.A.(CR)	0.65	---	0.65	28/09/2020	---	---	---	---	---	285@0.610	6@0.670	---	---	---	---	---	15,591.23	0.482	1.4	50101035
6,325,000	0.600	0.15	0.103	0.095	17/09/2020	17/02/2014	---	VOGIATZOGLU SYSTEMS SA (CR)	1.55	-0.64 €	1.56	28/09/2020	1.52	1.52	1.55	1.55	1.547	1000@1.54	50@1.55	---	---	900	7	1,392.00	9,803.75	1.4	2.44	50205010
8,418,750	0.300	0.28	0.32	0.095	26/08/2020	27/06/2012	---	GEKE (CR)	3.52	-9.74 €	3.9	28/09/2020	3.52	3.52	3.52	3.52	3.52	---	70@4.00	8.64	2019	70	1	246.40	29,634.00	3.36	5.7	40501025
15,000,000	0.300	---	---	---	06/07/2007	18/07/2000	---	DAIOS PLASTICS SA (CR)	3	---	3	28/09/2020	---	---	---	---	---	500@2.70	14@3.00	---	---	---	---	---	45,000.00	2.62	3.28	50203015
3,307,500	0.210	---	---	---	11/08/2010	04/12/2019	---	ELVE SA (CR)	4.3	---	4.3	28/09/2020	4.54	4.54	4.54	4.54	4.54	220@4.26	500@4.52	---	---	40	1	181.60	14,222.25	2.94	4.54	40204020
23,828,130	0.500	0.06	0.05	---	22/07/2019	17/02/2009	---	ELINOIL S.A. (CR)	1.41	---	1.41	28/09/2020	---	---	---	---	---	150@1.33	20@1.43	---	---	---	---	---	33,597.66	1.3	1.9	60101020
122,156,754	0.440	---	---	0.01	25/09/2020	28/03/2018	---	IASO SA (CR)	1.205	1.69 #	1.185	28/09/2020	1.195	1.195	1.205	1.205	1.198	449@1.21	140@1.22	---	---	1,926	7	2,307.72	147,198.89	1.15	1.48	20101010
86,735,980	0.310	---	---	---	06/07/2009	02/01/2002	---	ATHENS MEDICAL CENTER SA (CR)	1.365	---	1.365	28/09/2020	1.365	1.365	1.365	1.365	1.365	80@1.33	550@1.37	---	---	3,000	2	4,095.00	118,394.61	1.09	2.35	20101025
2,566,836	0.440	---	---	---	13/08/2010	09/01/2007	---	INTERWOOD-XYLEMPORIA (PR)	0.27	---	0.27	28/09/2020	---	---	---	---	---	---	1500@0.244	---	---	---	---	---	5,906.02	0.244	0.382	50205010
9,742,920	0.400	---	---	---	12/08/2016	14/07/2000	---	KARAMOLEGOS SA (CR)	1.4	---	1.4	28/09/2020	---	---	---	---	---	---	200@1.54	---	---	---	---	---	13,640.09	1.24	2.14	45102020
2,760,000	11.83	9.2	9.5	9.4	29/06/2020	16/07/1990	---	KARELIA (CR)	260	---	260	28/09/2020	260	260	260	260	260	1@258.00	13@270.00	---	---	189	3	49,140.00	717,600.00	228	302	45103010

## Daily Official List

Year: 141 Trading Day No: 185

## Section 2: Analytic Figures of Shares Transactions

Tuesday, 29 September, 2020

Number of Outstanding Securities	Nominal Value	Dividends [1]			Date of Last Coupon		Note	Shares	Closing price	% change	Previous closing price/date	Open price	Price min	Price max	Last price	Avg price	Last Bid [7]	Last Ask [7]	P/E after tax	Year	Volume	Trades	Transactions Value[8]	Company Mkt Value (thou. €)	Year low	Year high	Sector[4]		
2017	2018	2019	Dividend [2]	Right																									
6,700,000	0.800	0.028	0.043	0.053	15/07/2020	29/05/2014	---	MILLS KEPENOS (CR)	1.85	---	1.85	28/09/2020	---	---	---	---	1500@1.71	47@1.85	9.08	2019	---	---	---	12,395.00	1.56	2.58	45102020		
18,017,472	0.360	---	---	---	15/06/2010	28/08/2017	---	KTIMA KOSTAS LAZARIDIS SA (CR)	1.12	2.75	#	1.09	28/09/2020	1.005	1	1.12	1.12	1.001	300@1.02	160@1.13	---	---	9,210	5	9,223.70	20,179.57	0.91	1.55	45101015
21,364,000	1.12	0.2	0.2	---	29/07/2019	10/08/2005	---	LAMPASA HOTEL SA (CR)	19.7	---	19.7	28/09/2020	---	---	---	---	100@19.50	100@20.00	---	---	---	---	---	---	420,870.80	17.5	20.6	40501025	
5,939,268	0.620	---	---	---	10/07/2003	03/01/2002	---	LANAKAM SA (CR)	1.08	---	1.08	28/09/2020	---	---	---	---	---	---	670@0.975	---	2018	---	---	---	---	6,414.41	0.81	1.3	40401020
17,120,280	0.940	---	---	0.07	12/06/2020	02/08/2019	---	LOULIS MILLS SA (CR)	2.6	-2.26	€	2.66	28/09/2020	2.64	2.6	2.64	2.6	2.6	4@2.60	1000@2.70	---	---	1,199	4	3,117.52	44,512.73	2.48	3.74	45102020
8,321,682	0.670	---	---	---	17/08/2007	23/11/1999	---	N. LEVENTERIS (CR)	0.153	---	0.153	28/09/2020	---	---	---	---	---	---	---	---	---	---	---	---	---	1,878.16	0.122	0.224	50203000
2,160,524	0.670	0.0436	---	---	03/12/2018	23/11/1999	---	N. LEVENTERIS (PR)	0.28	---	0.28	28/09/2020	---	---	---	---	---	---	1722@0.252	---	2019	---	---	---	---	1,878.16	0.175	0.294	50203000
6,340,000	0.600	---	0.05	0.06	14/02/2020	02/12/2019	---	NAKAS MUSIC	1.41	-1.40	€	1.43	28/09/2020	1.57	1.41	1.57	1.41	1.49	100@1.41	630@1.55	---	---	200	4	298.00	8,939.40	0.93	2.66	40401030
27,379,200	0.300	0.148	0.294	0.3654	03/07/2020	24/08/2018	---	CRETE PLASTICS SA (CR)	13.35	-3.26	€	13.8	28/09/2020	13.9	13.1	13.9	13.35	13.512	94@13.25	152@13.75	---	---	1,492	103	20,160.30	365,512.32	8.55	14.9	50203015
255,494,534	3.00	0.22	0.286	0.613	16/04/2020	23/12/2015	---	PRODEA (CR)	7.9	---	7.9	28/09/2020	---	---	---	---	---	---	30@7.20	15@7.75	---	---	---	---	2,018,406.82	6.05	8.35	35102000	
4,181,450	0.500	---	---	---	21/08/2000	05/03/2002	---	FLOUR MILLS SARANTOPOULOS SA	1.3	---	1.3	28/09/2020	---	---	---	---	---	---	---	500@1.30	---	---	---	---	---	5,435.89	1.15	3.3	45102020

## Exchange Traded Funds (ETFs)

853,597	---	---	---	---	15/06/2016	---	---	ALPHA ETF FTSE Athex Large Cap	15.02	1.08	#	14.86	28/09/2020	15.02	15.02	15.02	15.02	15.02	30@14.60	---	---	---	---	200	1	3,004.00	---	11.3	24.5	12003
---------	-----	-----	-----	-----	------------	-----	-----	--------------------------------	-------	------	---	-------	------------	-------	-------	-------	-------	-------	----------	-----	-----	-----	-----	-----	---	----------	-----	------	------	-------

## Surveillance

172,599,567	0.300	---	---	---	19/09/2016	5161	---	Forthnet (CR)	0.33	-0.60	€	0.332	28/09/2020	0.316	0.316	0.33	0.33	0.327	990@0.332	220@0.360	---	---	11,000	8	3,602.00	56,957.86	0.186	0.448	15102015	
355,437,751	0.100	---	---	---	07/07/2010	21/09/2017	5160	FRIGOGLASS SA (CR)	0.07	-5.40	€	0.074	28/09/2020	0.0705	0.07	0.0705	0.07	0.07	7900@0.070	125460@0.070	---	---	336,876	49	23,649.43	24,880.64	0.07	0.28	50204000	
51,081,030	1.00	---	---	---	20/08/2007	03/09/2007	4912	LAVIPHARM SA (CR)	0.256	---	0.256	28/09/2020	0.256	0.256	0.27	0.27	0.264	498@0.270	271@0.290	---	---	432	3	114.12	13,076.74	0.208	0.338	20103015		
16,838,928	0.500	---	---	---	21/05/2008	19/06/2020	5247	PASAL DEVELOPMENT S.A. (CR)	0.69	---	0.69	28/09/2020	0.69	0.69	0.69	0.69	0.69	49@0.695	362@0.700	---	---	100	2	69.00	11,618.86	0.4849	1.1713	35101010		
65,326,268	0.530	---	---	---	04/07/2007	19/07/2006	4750	SATO SA (CR)	0.0215	---	0.0215	28/09/2020	0.024	0.024	0.024	0.024	0.024	3000@0.021	9999@0.024	---	---	400	2	9.60	1,404.51	0.0125	0.038	40202015		
13,191,620	0.620	---	---	---	04/08/2010	09/09/2002	5232	YALCO - CONSTANTINOU (CR)	0.0765	---	0.0765	28/09/2020	---	---	---	---	---	---	1600@0.077	---	---	---	---	---	---	1,009.16	0.05	0.0915	40202020	
13,000,000	1.00	---	---	---	01/08/2007	07/04/2000	5093	AKRITAS SA (CR)	0.46	---	0.46	28/09/2020	---	---	---	---	---	---	100@0.370	40@0.470	---	---	---	---	---	5,980.00	0.27	0.5	50101035	
221,519,681	0.300	---	---	---	02/07/2008	28/02/2011	4957	ANEK LINES SA (CR)	0.042	---	0.042	28/09/2020	0.042	0.042	0.042	0.042	0.042	10000@0.041	4139@0.042	---	---	---	---	38,644	11	1,623.05	9,623.27	0.03	0.072	40501015
312,163	0.300	---	---	---	02/07/2008	28/02/2011	4959	ANEK LINES SA (PR, issue '90)	0.072	---	0.072	28/09/2020	---	---	---	---	---	---	---	---	---	---	---	---	---	---	9,623.27	0.058	0.072	40501015
2,969,713	0.300	---	---	---	02/07/2008	28/02/2011	4958	ANEK LINES SA (PR, issue '96)	0.1	---	0.1	28/09/2020	---	---	---	---	---	---	---	---	---	---	---	---	---	---	9,623.27	0.08	0.1	40501015
4,737,503	0.320	---	---	---	22/06/2005	22/09/2015	5115	VARANGIS AVEPE S.A. (CR)	0.128	---	0.128	28/09/2020	---	---	---	---	---	---	---	1075@0.103	---	---	---	---	---	---	606.40	0.103	0.16	40202015
6,330,002	0.300	---	---	---	25/06/2002	15/03/2019	5162	VARARESSOS (CR)	0.398	---	0.398	28/09/2020	---	---	---	---	---	---	---	14@0.320	---	2019	---	---	---	---	2,519.34	0.282	0.525	55101020
17,579,754	4.16	---	---	---	18/08/2006	02/08/2010	---	BIOTER SA (CR)	0.085	---	0.085	28/09/2020	---	---	---	---	---	---	2000@0.070	5143@0.085	---	---	---	---	---	---	1,494.28	0.041	0.096	50101010
4,968,600	2.88	---	---	---	01/07/1998	14/12/1998	5245	VIS SA (CR)	0.83	---	0.83	28/09/2020	---	---	---	---	---	---	100@0.830	---	---	2019	---	---	---	---	4,123.94	0.62	1.26	50203030
15,878,748	0.480	---	---	---	10/07/2006	22/03/2004	5095	DOMIKI KRITIS SA (CR)	0.3	-1.32	€	0.304	28/09/2020	0.3	0.3	0.302	0.3	0.3	1000@0.282	13@0.298	---	---	15,900	20	4,776.00	4,763.62	0.109	0.322	50101010	
3,961,300	1.28	---	---	---	29/06/2004	03/08/2000	5248	DUROS SA (CR)	0.17	---	0.17	28/09/2020	---	---	---	---	---	---	700@0.136	500@0.200	---	2019	---	---	---	---	673.42	0.125	0.27	40204020
51,754,364	0.300	---	---	---	23/12/2003	24/01/2007	5197	SELECTED TEXT. IND. ASSOC (CR)	0.151	---	0.151	28/09/2020	---	---	---	---	---	---	900@0.121	137@0.164	---	---	---	---	---	---	7,814.91	0.117	0.25	55101020
11,125,110	0.300	---	---	---	02/06/2010	06/11/2017	5178	EUROCONSULTANTS S.A. (CR)	0.268	3.08	#	0.26	28/09/2020	0.26	0.26	0.268	0.268	0.262	1120@0.260	5400@0.268	---	---	8,480	8	2,220.80	2,981.53	0.165	0.34	50205020	
156,961,721	0.300	---	---	---	30/05/2013	14/11/2007	5246	INTRALOT (CR)	0.115	0.88	#	0.114	28/09/2020	0.114	0.114	0.115	0.115	0.115	15900@0.114	998@0.117	---	---	281,750	58	32,336.54	18,050.60	0.072	0.41	40501020	
7,125,216	0.650	---	---	---	01/07/2005	14/12/1999	4955	KRE.KA SA (CR)	0.183	---	0.183	28/09/2020	---	---	---	---	---	---	---	2000@0.190	---	2019	---	---	---	---	1,303.91	0.058	0.24	45102010
7,734,375	1.00	---	---	---	09/07/2007	07/01/2011	5112	LIVANIS SA (CR)	0.0505	---	0.0505	28/09/2020	0.0605	0.0605	0.0605	0.0605	0.061	---	3790@0.061	---	---	---	150	2	9.08	390.59	0.0505	0.116	40301030	
15,842,391	1.51	---	---	---	15/07/2009	12/05/2000	5141	BITROS HOLDING SA (CR)	0.136	---	0.136	28/09/2020	---	---	---	---	---	---	1250@0.115	200@0.134	---	---	---	---	---	---	2,154.57	0.092	0.204	55102010
119,596,817	0.040	---	---	---	15/07/2008	27/04/2017	5190	NIKAS SA (CR)	0.6	---	0.6	28/09/2020	---	---	---	---	---	---	---	19@0.480	---	---	---	---	---	---	71,758.09	0.4	0.6	45102020
24,319,250	0.300	---	---	---	09/07/2002	04/07/2007	5165	PROODEFTIKH SA (CR)	0.25	8.70	#	0.23	28/09/2020	0.25	0.25	0.25	0.25	0.25	---	1000@0.240	---	---	1,000	5	250.00	6,079.81	0.11	0.292	50101010	

Number of Outstanding Securities	Nominal Value	Dividends [1]			Date of Last Coupon		Note	Shares	Closing price	% change	Previous closing price/date	Open price	Price min	Price max	Last price	Avg price	Last Bid [7]	Last Ask [7]	P/E after tax	Year	Volume	Trades	Transactions Value[8]	Company Mkt Value (thou. €)	Year low	Year high	Sector[4]	
		2017	2018	2019	Dividend [2]	Right																						
10,186,667	1.35	---	---	---	24/06/2008	02/02/2016	4887	SIDMA SA (CR)	0.476	2.59 #	0.464	28/09/2020	0.478	0.476	0.478	0.476	0.476	510@0.420	1991@0.470	---	---	686	8	326.73	4,848.85	0.192	0.57	55102010
766,000	1.00	---	---	---	01/07/2004	11/12/2012	5193	TRIA ALFA SA (CR)	3.96	---	3.96	28/09/2020	---	---	---	---	---	---	25.02	2019	---	---	---	4,126.06	1.44	3.96	55101020	
245,000	1.00	---	---	---	19/07/2010	11/12/2012	5194	TRIA ALFA SA (PR)	4.46	---	4.46	28/09/2020	---	---	---	---	---	1000@4.00	28.18	2019	---	---	---	4,126.06	0.9	4.46	55101020	

## Suspension Status

20,255,805	0.300	---	---	---	22/08/2006	02/08/2010	5136	AXON HOLDING SA (CR)	0.058	---	0.058	28/04/2017	---	---	---	---	---	---	---	---	---	---	---	1,174.84	0.058	0.058	20101010
5,867,311	0.300	---	---	---	11/08/2010	28/04/2017	5243	DIONIC (CR)	0.11	---	0.11	30/06/2020	---	---	---	---	---	---	---	---	---	---	---	645.40	0.096	0.244	50205010
21,820,410	0.800	---	---	---	22/05/2008	02/08/2011	5174	EUROMEDICA SA (CR)	0.448	---	0.448	30/04/2018	---	---	---	---	---	---	---	---	---	---	---	9,775.54	0.448	0.448	20101010
66,948,210	0.300	---	---	---	22/09/2015	22/09/2015	5179	FOLLI FOLLIE (CR)	4.8	---	4.8	24/05/2018	---	---	---	---	---	---	---	---	---	---	---	321,351.41	4.8	4.8	40401030
12,417,000	0.310	---	0.0205	---	27/08/2019	28/08/2017	5233	MLS MULTIMEDIA SA (CR)	0.57	---	0.57	12/05/2020	---	---	---	---	---	---	---	---	---	---	---	7,077.69	0.475	1.51	10101015
33,301,715	0.320	---	---	---	27/06/2003	08/07/2009	5241	AEGEK (CR)	0.035	---	0.035	25/06/2020	---	---	---	---	---	---	---	---	---	---	---	1,165.56	0.0245	0.06	50101010
14,870,100	0.300	---	---	---	15/05/2008	26/09/2011	5130	ALPHA GRISSIN S.A. (CR)	0.014	---	0.014	13/04/2017	---	---	---	---	---	---	---	---	---	---	---	208.18	0.014	0.014	10102030
33,930,000	0.300	---	---	---	03/07/2006	30/05/2001	4865	BABIS VOVOS SA (CR)	0.304	---	0.304	30/03/2012	---	---	---	---	---	---	---	---	---	---	---	10,314.72	0.304	0.304	35101010
77,126,446	0.340	---	---	---	23/05/2005	18/08/2011	5206	G.E. DIMITRIOU (CR)	0.0125	---	0.0125	30/04/2019	---	---	---	---	---	---	---	---	---	---	---	964.08	0.0125	0.0125	40202020
6,000,000	0.600	---	---	---	13/06/2008	08/04/2004	5172	EUROBROKERS S.A. (CR)	0.008	---	0.008	27/04/2018	---	---	---	---	---	---	---	---	---	---	---	48.00	0.008	0.008	30302015
7,085,888	1.59	---	---	---	02/07/1996	06/09/2010	5216	ELVIEMEK (CR)	2.6	---	2.6	30/09/2019	---	---	---	---	---	---	---	---	---	---	---	18,423.31	2.6	2.6	35101010
25,179,640	0.600	---	---	---	08/08/1994	19/09/2000	5191	J.BOUTARIS & SON (CR)	0.026	---	0.026	01/10/2018	---	---	---	---	---	---	---	---	---	---	---	742.45	0.026	0.026	45101015
1,540,000	0.600	---	---	---	08/08/1994	19/09/2000	5192	J.BOUTARIS & SON (PR)	0.057	---	0.057	01/10/2018	---	---	---	---	---	---	---	---	---	---	---	742.45	0.057	0.057	45101015
24,619,524	0.500	---	---	---	10/10/1986	30/12/2002	4914	KERAMIA-ALLATINI (CR)	0.088	---	0.088	30/08/2012	---	---	---	---	---	---	---	---	---	---	---	2,166.52	0.088	0.088	35101010
31,543,600	0.420	---	---	---	19/07/2010	19/12/2018	5205	KRETA FARM SA (CR)	1.085	---	1.085	30/04/2019	---	---	---	---	---	---	---	---	---	---	---	34,224.81	1.085	1.085	45102020
23,935,280	0.300	---	---	---	29/06/2009	13/06/2000	5153	NAYTEMPORIKI PUBLISHING SA(CR)	0.107	---	0.107	02/10/2017	---	---	---	---	---	---	---	---	---	---	---	2,561.07	0.107	0.107	40301030
255,459,600	0.300	---	---	---	26/06/2000	03/12/2010	5101	NEL SA (CR)	0.07	---	0.07	31/08/2015	---	---	---	---	---	---	---	---	---	---	---	17,882.17	0.07	0.07	40501015
23,463,874	0.800	---	---	---	23/05/2003	21/12/1999	4918	NEORION SA (CR)	0.125	---	0.125	30/08/2012	---	---	---	---	---	---	---	---	---	---	---	2,932.98	0.125	0.125	50206030
18,750,000	0.300	---	---	---	02/07/2001	31/12/2012	5154	PEGASUS PUBLISHING S.A. (CR)	0.089	---	0.089	02/10/2017	---	---	---	---	---	---	---	---	---	---	---	1,668.75	0.089	0.089	40301030
100,793,572	0.300	---	---	---	16/07/2009	11/02/2016	5110	TELETIPOS SA (CR)	0.06	---	0.06	07/03/2016	---	---	---	---	---	---	---	---	---	---	---	6,047.61	0.06	0.06	40301035
4,034,950	0.680	---	---	---	01/07/2005	30/12/2010	5171	CHATZIKRANIOTIS & SONS SA (CR)	0.14	---	0.14	27/04/2018	---	---	---	---	---	---	---	---	---	---	---	564.89	0.14	0.14	45102020

## Shares' Notes

Code	Note text
( )	- Adjusted dividends.
*	- Last adjusted closing price.
[1]	- Net dividends.
[2]	- The "Date of Last Coupon" for New listings refers to the date company's stocks started to trade in Athex
[3]	- The Company Market Value is referred to the number of outstanding shares
[4]	- Sectors codification can be found in Appendix A
[5]	- The Market Value refers to the total number of shares listed (including their several classes) in the exchange by the company.
[6]	- P/E greater than 100
[7]	- Last view of the Order Book before the end of the trading session
[8]	- All Blocks Methods' Transactions Value are included.
4750	- Transfer to the Under Surveillance Category from 8/4/2011.
4865	- Suspension of trading as of 2/4/2012.
4887	- Transfer to the Surveillance Category as of 10/4/2012.
4912	- Transfer to the Surveillance Category as of 31/7/2012.
4914	- Suspension of trading as of 31/8/2012.
4918	- Suspension of trading as of 31/8/2012.
4955	- Transfer to the Surveillance Category as from 5/4/2013.
4957	- Transfer to the Surveillance Category as from 5/4/2013.
4958	- Transfer to the Surveillance Category as from 5/4/2013.
4959	- Transfer to the Surveillance Category as from 5/4/2013.
5093	- Transfer to the Surveillance Category as of 8/4/2015.
5095	- Transfer to the Surveillance Category as from 09/04/2015.
5101	- Suspension of trading as of 1/9/2015.
5110	- Suspension of trading as of 08/03/2016.
5112	- Transfer to the Surveillance Category as of 15/04/2016.
5115	- Transfer to the Surveillance Category as of 15/04/2016.
5130	- Suspension of trading as of 18/04/2017.
5136	- Suspension of trading as of 02/05/2017.
5141	- Transfer to the Surveillance Category as of 10/05/2017.
5153	- Suspension of trading as of 03/10/2017.
5154	- Suspension of trading as of 03/10/2017.
5160	- Transfer to the Surveillance Category as of 15/04/2016.
5161	- Transfer to the Surveillance Category as of 25/11/2011.
5162	- Transfer to the Under Supervision Category as of 21/12/2009.
5165	- Transfer to the Surveillance Category as of 15/02/2018.
5171	- Suspension of trading as of 30/04/2018.
5172	- Suspension of trading as of 30/04/2018.
5174	- Suspension of trading as of 02/05/2018.
5178	- Transfer to the Surveillance Category as of 11/05/2018.
5179	- Suspension of trading as of 25/05/2018.
5190	- Transfer to the Surveillance Category as of 01/10/2018.
5191	- Suspension of trading as of 02/10/2018.
5192	- Suspension of trading as of 02/10/2018.
5193	- Transfer to the Surveillance Category as of 25/10/2018.
5194	- Transfer to the Surveillance Category as of 25/10/2018.
5197	- Transfer to the Surveillance Category as of 07/11/2018.
5205	- Suspension of trading as of 02/05/2019.
5206	- Suspension of trading as of 02/05/2019.
5216	- Suspension of trading as of 01/10/2019.
5232	- Transfer to the Under Surveillance Category from 08/04/2011.
5233	- Suspension of trading as of 13/05/2020.
5241	- Suspension of trading as of 26/06/2020.

---

## Shares' Notes

---

Code	Note text
5243	- Suspension of trading as of 01/07/2020.
5245	- Transfer to the Surveillance Category as of 09/07/2020.
5246	- Transfer to the Surveillance Category as of 09/07/2020.
5247	- Transfer to the Surveillance Category as from 5/4/2013.
5248	- Transfer to the Surveillance Category as of 05/08/2020.



## Securities Blocks Details

Securities	Block Volume	Price	Block Trade Value	Time of approval	Note
TERNA ENERGY (CR)	50,000	11.09	554,500.00	12:31:04	20
TERNA ENERGY (CR)	51,136	11.11	568,120.96	12:55:45	20
OPAP (CR)	200,000	8.06	1,612,000.00	13:27:36	20

## Blocks Notes

9 - Method 6-1 / Special Fees

10 - Method 6-1 / Special Fees, SDS

14 - Method 6-3 / Settlement, Incomplete Buy and Sell

18 - Method 6-2 / SPOT 1

19 - Method 6-2 / SPOT 2

20 - Method 6-1 and Method 6-1 Same Day Settlement

21 - Other Pre-agreed

**Shares Rights Details**

Occured date	Exercise from	Exercise until	Trading until	Rights	Price min	Price max	Closing price	Last Bid	Last Ask	Volume	Trades	Transactions Value
--------------	---------------	----------------	---------------	--------	-----------	-----------	---------------	----------	----------	--------	--------	--------------------

No Rights Transactions.

---

**Securities Forced Sales**

---

Securities	Category of Security	Transactions Volume	Number of Trades	Transactions Value	Note
------------	----------------------	------------------------	---------------------	-----------------------	------

---

No Forced Transactions.

---

---

**Forced Sales Notes**

---

- 1 - Normal Forced Sale.
- 2 - Forced Sales of Fixed Registered Shares.
- 3 - Forced Sales of Remaining Stock Fractions.

**Forced Sales Registered Shares**

Securities	Start Date	End Date	Initial Volume	Remaining Volume	Date	Avg price (day)	Avg price (period)	Number of Trades	Transactions Volume	Transactions Value
------------	------------	----------	----------------	------------------	------	-----------------	--------------------	------------------	---------------------	--------------------

No Fixed Registered Shares Forced Sales.

**Forced Sales Notes**

According to Decision 1/380/04.05.2008 of the Hellenic Republic Capital Market Commission, the certificated registered shares that have not been deposited to the issuer for dematerialisation, will be auctioned in the Athens Exchange by the supervising issuer. Forced sales procedure is held according to Article 99A of the Athens Exchange Rulebook. The average price of the period is calculated by dividing the Total transactions value by the Total volume and includes all the transactions made until the current date.

## Exchange Traded Funds (ETFs) Characteristics

	Transactions Date (T)	Creation / Redemption	Units (T-1)	New Units (T-1)	Redemption Units (T-1)	Units (T) [1]	Fund Assets [2]	Net Unit Price	Dividend per Unit	Dividend Date
ALPHA ETF FTSE Athex Large Cap	29/09/2020	5,000	853,597	---	---	853,597	12,804,180.00	15.0003	0.81	01/07/2020

## ETFs Notes

[1] - Units (T) = Units (T-1) + New Units (T-1) - Redemption Units (T-1)

[2] - The Creation / Redemption Units of T-1 are included.

## Convertible Corporate Bonds - Regulated Market

Num Listed Bonds	Nominal price	Issue price	Today's Rate	Exp. Date	Duration (years)	Note	Coupon		Trading	Corporate Bonds	Price min	Price max	Closing price	Previous closing price/date	Volume	Transactions Value	Last order			ear min	Year max
							Common	Preffered									Price	Buy / Sell	Date		
171,246,551	0.30	0.30	1.00	11/10/2025	9	---	16	---	1	FORTHNET S.A. (Convertible)	---	---	---	---	---	---	90.0000	B	03/08/2020	100.0000	100.0000

## Corporate Bonds Notes

Transactions Volume = (Pieces) \* (Nominal Price). Transactions Value = (Pieces) \* (Nominal Price) \* (price %) + (Accrued interest).

The price of a Bond is stated as a percentage (%) of Bond's Nominal Price.

Nominal Price in Euros (€), except if it is noted differently.

## Non Convertible Corporate Bonds - Regulated Market

Num Listed Bonds	Nominal price	Issue price	Today's Rate	Exp. Date	Duration (years)	Note	Coupon		Trading	Corporate Bonds	Accrued Int.	Yield.T.Mat	Price min	Price max	Closing price	Previous closing price/date	Volume	Transactions Value	Last order		ear min	Year max		
							Common	Preferred											Price	Buy / Sell			Date	
175,000	1,000.00	1,000.00	3.40	26/07/2024	5	---	3	---	1	ATTICA HOLDINGS S.A. (Non Convertible)	6.2333	7.9140	82.0000	86.0000	85.6500	82.6830	28/09/2020	37,000	30,723.73	80.0300	B	29/09/2020	60.0000	100.0000
22,727	1,000.00	1,000.00	4.95	26/06/2023	5	---	5	---	1	B&F COMM. & GARM. INDUS. S.A. (Non Convertible)	13.3375	7.7870	---	---	---	91.5000	24/09/2020	---	---	86.1105	B	29/09/2020	68.0000	94.9999
39,892,816	1.00	1.00	5.00	04/10/2021	5	---	16	---	1	HOUSEMARKET S.A. (Non Convertible)	0.0121	2.0110	---	---	---	102.6000	28/09/2020	---	---	102.5000	B	29/09/2020	93.8736	105.1000
150,000	1,000.00	1,000.00	2.60	22/10/2026	7	---	2	---	1	TERNA ENERGY FINANCE S.A. (Non Convertible)	11.7000	2.5370	100.0000	100.0600	100.0000	100.0070	28/09/2020	223,000	225,614.40	100.0000	B	29/09/2020	84.4000	102.8000
200,000	1,000.00	1,000.00	3.60	12/03/2026	7	---	4	---	1	AEGEAN AIRLINES S.A. (Non Convertible)	1.7000	5.9910	88.1000	89.0000	88.6625	88.1000	28/09/2020	40,000	35,533.00	86.0010	B	29/09/2020	54.7313	107.3000
90,000	1,000.00	1,000.00	3.00	11/05/2023	5	---	5	---	1	CORAL A.E. (Non Convertible)	11.9167	2.1640	101.7000	101.7000	101.7000	102.3000	28/09/2020	29,000	29,838.58	101.7000	B	29/09/2020	89.4200	105.0000
120,000	1,000.00	1,000.00	3.95	04/04/2025	7	---	5	---	1	GEK TERNA S.A. (Non Convertible)	19.5306	2.7750	---	---	---	103.6500	28/09/2020	---	---	103.6500	B	29/09/2020	91.0000	107.2000
320,000	1,000.00	1,000.00	3.40	21/07/2027	7	---	1	---	1	LAMDA DEVELOPMENT S.A. (Non Convertible)	6.8000	3.3050	100.0000	100.5500	100.4125	100.0020	28/09/2020	40,000	40,437.00	99.9600	B	29/09/2020	99.8206	100.8500
500,000	1,000.00	1,000.00	2.75	03/07/2027	7	---	1	---	1	GEK TERNA S.A. (Non Convertible)	6.8750	2.8970	98.9999	99.2500	99.0477	98.9180	28/09/2020	48,000	47,872.89	98.2000	B	29/09/2020	97.7001	100.0000

## Corporate Bonds Notes

Transactions Volume = (Pieces) \* (Nominal Price). Transactions Value = (Pieces) \* (Nominal Price) \* (price %) + (Accrued interest).

The price of a Bond is stated as a percentage (%) of Bond's Nominal Price.

Nominal Price in Euros (€), except if it is noted differently.

## Government Bonds

Number Listed Bonds	Nominal price	Today's Rate	Accrued Interest Calc	Exp. Date [1]	Duration (years)	Note	Coupons Date	Curr. coupon value	Trading Unit	Government Bonds	Price min	Price max	Closing price	Previous closing price/date	Volume	Transactions Value	Price	Last order Buy / Sell	Date
3,000,000	1,000.00	4.38	Actual/Actual	01/08/2022	5	---	01/08	4.38	1	GGB-FXD-010822-05Y-4.375-1.000	---	---	---	---	---	---	1.0000	B	28/11/2018
2,500,000	1,000.00	1.88	Actual/Actual	04/02/2035	15	---	04/02	1.88	1	GGB-FXD-040235-15Y-1.875-1.000	---	---	---	---	---	---	---	---	---
2,500,000	1,000.00	3.45	Actual/Actual	02/04/2024	5	---	02/04	3.45	1	GGB-FXD-020424-05Y-3.450-1.000	---	---	---	---	---	---	---	---	---
4,355,990,324	1.00	3.50	Actual/Actual	30/01/2023	5	---	01/02 - 31/01	3.50	1	GGB-FXD-300123-05Y-3.500-1.000	---	---	---	94.5720 13/07/2018	---	---	1.0000	B	28/11/2018
5,962,747,327	1.00	3.75	Actual/Actual	30/01/2028	10	---	/02 - 01/02 - 31/	3.75	1	GGB-FXD-300128-10Y-3.750-1.000	---	---	---	85.4610 13/07/2018	---	---	1.0000	B	28/11/2018
6,091,218,404	1.00	3.90	Actual/Actual	30/01/2033	15	---	/02 - 01/02 - 31/	3.90	1	GGB-FXD-300133-15Y-3.900-1.000	---	---	---	78.6730 13/07/2018	---	---	1.0000	B	28/11/2018
4,805,399,486	1.00	4.00	Actual/Actual	30/01/2037	19	---	/02 - 01/02 - 31/	4.00	1	GGB-FXD-300137-19Y-4.000-1.000	---	---	---	77.0370 13/07/2018	---	---	1.0000	B	28/11/2018
4,603,713,186	1.00	4.20	Actual/Actual	30/01/2042	24	---	/02 - 01/02 - 31/	4.20	1	GGB-FXD-300142-24Y-4.200-1.000	---	---	---	77.7640 13/07/2018	---	---	1.0000	B	28/11/2018
550,418,123	1.00	3.65	Actual/Actual	24/02/2023	11	---	24/02	3.65	1	GGB-FXD-240223-11Y-2.000-1.000	---	---	---	10.0000 22/06/2015	---	10.0000	B	11/07/2019	
445,007,576	1.00	3.65	Actual/Actual	24/02/2024	12	---	24/02	3.65	1	GGB-FXD-240224-12Y-2.000-1.000	---	---	---	10.0000 22/06/2015	---	---	---	---	---
423,674,226	1.00	3.65	Actual/Actual	24/02/2025	13	---	24/02	3.65	1	GGB-FXD-240225-13Y-2.000-1.000	---	---	---	10.0000 22/06/2015	---	---	---	---	---
212,292,153	1.00	3.65	Actual/Actual	24/02/2026	14	---	24/02	3.65	1	GGB-FXD-240226-14Y-2.000-1.000	---	---	---	10.0000 22/06/2015	---	---	---	---	---
160,621,352	1.00	3.65	Actual/Actual	24/02/2027	15	---	24/02	3.65	1	GGB-FXD-240227-15Y-2.000-1.000	---	---	---	10.0000 22/06/2015	---	---	---	---	---
183,244,055	1.00	3.65	Actual/Actual	24/02/2028	16	---	24/02	3.65	1	GGB-FXD-240228-16Y-2.000-1.000	---	---	---	10.0000 22/06/2015	---	---	---	---	---
164,802,894	1.00	3.65	Actual/Actual	24/02/2029	17	---	24/02	3.65	1	GGB-FXD-240229-17Y-2.000-1.000	---	---	---	10.0000 22/06/2015	---	---	---	---	---
165,460,943	1.00	3.65	Actual/Actual	24/02/2030	18	---	24/02	3.65	1	GGB-FXD-240230-18Y-2.000-1.000	---	---	---	10.0000 22/06/2015	---	---	---	---	---
129,007,241	1.00	3.65	Actual/Actual	24/02/2031	19	---	24/02	3.65	1	GGB-FXD-240231-19Y-2.000-1.000	---	---	---	10.0000 22/06/2015	---	---	---	---	---
126,192,683	1.00	3.65	Actual/Actual	24/02/2032	20	---	24/02	3.65	1	GGB-FXD-240232-20Y-2.000-1.000	---	---	---	10.0000 22/06/2015	---	---	---	---	---
146,905,168	1.00	3.65	Actual/Actual	24/02/2033	21	---	24/02	3.65	1	GGB-FXD-240233-21Y-2.000-1.000	---	---	---	10.0000 22/06/2015	---	---	---	---	---
154,475,606	1.00	3.65	Actual/Actual	24/02/2034	22	---	24/02	3.65	1	GGB-FXD-240234-22Y-2.000-1.000	---	---	---	10.0000 22/06/2015	---	---	---	---	---
144,429,441	1.00	3.65	Actual/Actual	24/02/2035	23	---	24/02	3.65	1	GGB-FXD-240235-23Y-2.000-1.000	---	---	---	10.0000 22/06/2015	---	---	---	---	---
166,211,676	1.00	3.65	Actual/Actual	24/02/2036	24	---	24/02	3.65	1	GGB-FXD-240236-24Y-2.000-1.000	---	---	---	10.0000 22/06/2015	---	---	---	---	---
145,461,669	1.00	3.65	Actual/Actual	24/02/2037	25	---	24/02	3.65	1	GGB-FXD-240237-25Y-2.000-1.000	---	---	---	10.0000 22/06/2015	---	---	---	---	---
146,941,087	1.00	3.65	Actual/Actual	24/02/2038	26	---	24/02	3.65	1	GGB-FXD-240238-26Y-2.000-1.000	---	---	---	10.0000 22/06/2015	---	---	---	---	---
135,115,612	1.00	3.65	Actual/Actual	24/02/2039	27	---	24/02	3.65	1	GGB-FXD-240239-27Y-2.000-1.000	---	---	---	10.0000 22/06/2015	---	---	---	---	---
141,909,637	1.00	3.65	Actual/Actual	24/02/2040	28	---	24/02	3.65	1	GGB-FXD-240240-28Y-2.000-1.000	---	---	---	10.0000 22/06/2015	---	---	---	---	---
136,788,720	1.00	3.65	Actual/Actual	24/02/2041	29	---	24/02	3.65	1	GGB-FXD-240241-29Y-2.000-1.000	---	---	---	10.0000 22/06/2015	---	---	---	---	---
163,643,410	1.00	3.65	Actual/Actual	24/02/2042	30	---	24/02	3.65	1	GGB-FXD-240242-30Y-2.000-1.000	---	---	---	10.0000 22/06/2015	---	---	---	---	---
4,000,000	1,000.00	3.88	Actual/Actual	12/03/2029	10	---	12/03	3.88	1	GGB-FXD-120329-10Y-3.875-1.000	---	---	---	---	---	---	100.0000	B	15/10/2019
503,753	1,000.00	0.32	FLR Actual/360	16/09/2021	2	---	16/03 - 16/09	---	1	GGB-FLT-160921-02Y-0.319-1.000	---	---	---	---	---	---	---	---	---
3,000,000	1,000.00	3.38	Actual/Actual	15/02/2025	7	---	15/02	3.38	1	GGB-FXD-150225-07Y-3.375-1.000	---	---	---	---	---	---	---	---	---
250,250	1,000.00	2.90	Actual/Actual	20/03/2023	4	---	20/03	2.90	1	GGB-FXD-200323-04Y-2.900-1.000	---	---	---	---	---	---	---	---	---
964,000	1,000.00	3.25	Actual/Actual	20/03/2025	6	---	20/03	3.25	1	GGB-FXD-200325-06Y-3.250-1.000	---	---	---	---	---	---	---	---	---
2,100,000	1,000.00	3.55	Actual/Actual	20/03/2026	7	---	20/03	3.55	1	GGB-FXD-200326-07Y-3.550-1.000	---	---	---	---	---	---	---	---	---

## Government Bonds Notes

Transactions Volume = (Pieces) \* (Nominal Price). Transactions Value = (Pieces) \* (Nominal Price) \* (price %) + (Accrued interest).

The Value of current coupon for the issues with NV 0.01 euro refers to NV 100 euros

FLR: Floating Interest Rate.

[1] - The Expiration Date of the interest bearing period and the Date for coupon payment.



## Government Bonds

Number Listed Bonds	Nominal price	Today's Rate	Accrued Interest Calc	Exp. Date [1]	Duration (years)	Note	Coupons Date	Curr. coupon value	Trading Unit	Government Bonds	Price min	Price max	Closing price	Previous closing price/date	Volume	Transactions Value	Price	Last order Buy / Sell	Date
5,500,000	1,000.00	1.50	Actual/Actual	18/06/2030	10	---	18/06	1.50	1	GGB-FXD-180630-10Y-1.500-1.000	---	---	---	---	---	---	---	---	---
3,314,250	1,000.00	3.25	Actual/Actual	20/03/2050	30	---	20/03	3.25	1	GGB-FXD-200350-30Y-3.250-1.000	---	---	---	---	---	---	---	---	---
2,000,000	1,000.00	2.00	Actual/Actual	22/04/2027	7	---	22/04	2.00	1	GGB-FXD-220427-07Y-2.000-1.000	---	---	---	---	---	---	99.9000	B	22/04/2020
2,500,000	1,000.00	1.88	Actual/Actual	23/07/2026	7	---	23/07	1.88	1	GGB-FXD-230726-07Y-1.875-1.000	---	---	---	---	---	---	---	---	---

## Government Bonds Notes

Transactions Volume = (Pieces) \* (Nominal Price). Transactions Value = (Pieces) \* (Nominal Price) \* (price %) + (Accrued interest).

The Value of current coupon for the issues with NV 0.01 euro refers to NV 100 euros

FLR: Floating Interest Rate.

[1] - The Expiration Date of the interest bearing period and the Date for coupon payment.

## Treasury Bills &amp; Zero Coupon Government Bonds

Issue Date	13-Week Maturity									26-Week Maturity									52-Week Maturity								
	Exp. Date	Initial Rate	Num Listed Bonds	Nominal price	Issue price	Last Trade Price	Last Trade Date	Volume Traded	Note	Exp. Date	Initial Rate	Num Listed Bonds	Nominal price	Issue price	Last Trade Price	Last Trade Date	Volume Traded	Note	Exp. Date	Initial Rate	Num Listed Bonds	Nominal price	Issue price	Last Trade Price	Last Trade Date	Volume Traded	Note
13/12/2019	---	---	---	---	---	---	---	---	---	---	---	---	---	---	---	---	---	---	11/12/2020	0.07	1,000,000	1,000.00	999.30	---	---	---	---
13/03/2020	---	---	---	---	---	---	---	---	---	---	---	---	---	---	---	---	---	---	12/03/2021	0.24	600,000	1,000.00	1,000.00	---	---	---	---
12/06/2020	---	---	---	---	---	---	---	---	---	---	---	---	---	---	---	---	---	---	11/06/2021	0.25	1,600,000	1,000.00	997.49	---	---	---	---
11/09/2020	---	---	---	---	---	---	---	---	---	---	---	---	---	---	---	---	---	---	10/09/2021	0.00	1,000,000	1,000.00	1,000.00	---	---	---	---

Bonds in Circulation	Currency / Min nominal traded Value	Coupons Payment Date	Current Coupon Value	Note	Coupon	Trading Unit	Issue Date	Duration (years)	Today's Interest	A.I.C in days	Bonds	Last price of previous days		Last Outcry in Cash (euro)		Trades in Pieces	Life min	Life Max	
												Price	Buy / Sell	Price	Buy / Sell				
<b>Corporate Bonds in Foreign Currency and Euro</b>																			
103,746	GBP / 10	01/12	0.25	---	61	1	01/12/1930	98	2.5	360	National Mortgage Bank	2.27	05/02/1996	2.27	S	05/02/1996	---	2.27	2.27
0	GBP / 10	01/12	0.25	---	63	1	01/12/1928	100	2.5	360	National Mortgage Bank	---	---	---	---	---	---	---	---

## Government Bonds Notes

A.I.C: Accrued Interest Calculation base.

FLR: Floating Interest Rate.

The minimum tradeable Nominal Value for all Demeterialised Government Titles is 100 Euros.

(μτφρ-0)

Athex & ATHEXClear Members List

Member Name				Stock Market			Derivatives Market		ATHEXClear Member	
	Address	Phone	Fax	Market Member	Remote Member	Market Maker	Proprietary	Market Maker	General Clearing	Direct Clearing
A. SARRIS SECURITIES S.A.				a						
6, ΔΡΑΓΑΤΣΑΝΙΟΥ 6 ΑΘΗΝΑ	2103367700									
AEONIC SECURITIES C.I.F. P.L.C.				a	a					
, ΛΑΪΟΥ 6, ΓΡ. 301B, ANNA COURT	35725337600									
ALPHA BANK A.E.									a	
103, AVE. ATHINON ΑΘΗΝΑ	+30 2103436820	210-3436270								
40, ΣΤΑΔΙΟΥ STR ΑΘΗΝΑ	(210)-3260000	(210)-3264116								
	(210)-3265546	(210)-3265811								
ALPHA FINANCE INVESTMENT SERVICES S.A.				a		a	a	a		a
5, ΜΕΡΛΙΝ 5 ΑΘΗΝΑ	2103677400									
ARGUS STOCKBROKERS LTD				a	a		a			
25 , 25 ΛΕΩΦΟΡΟΣ ΔΗΜΟΣΘΕΝΗ ΣΕΒΕΡΗ	0035722717000									
ATLANTIC SECURITIES LTD				a	a					
37, ΠΡΟΔΡΟΜΟΥ 37	0035722445400									
AXON SECURITIES S.A.				a			a			
48, ΣΤΑΔΙΟΥ 48 ΑΘΗΝΑ	2103363800									
BETA SECURITIES S.A.				a		a	a			a
29 , Λ. ΑΛΕΞΑΝΔΡΑΣ 29 ΑΘΗΝΑ	2106478930									
BNP PARIBAS SECURITIES SERVICES									a	
2, ΛΑΜΨΑΚΟΥ 2 ΑΘΗΝΑ	2107468500									
BOFA SECURITIES EUROPE SA				a	a					
, 112 AVENUE KL?BER 75116	+33 153655555									
CAPITAL SECURITIES S.A.				a			a			
58, ΜΗΤΡΟΠΟΛΕΩΣ 58 ΑΘΗΝΑ	2103369700									
CFS SECURITIES INVESTMENT SERVICES S.A.				a						
3, ΠΑΠΑΡΡΗΓΟΠΟΥΛΟΥ 3 ΑΘΗΝΑ	2103360800									
CITIGROUP GLOBAL MARKETS EUROPE AG				a	a					
16, REUTERWEG 16 FRANKFURT	+49 691366-0									
CITIGROUP GLOBAL MARKETS LIMITED				a	a					
1, 33 CANADA SQUARE -CANARY WHARF	+44 02079864000									
CREDIT SUISSE SECURITIES (EUROPE) LIMITED				a	a					
1, ONE CABOT SQUARE LONDON	+44 2078888888									
CREDIT SUISSE SECURITIES SOCIEDAD DE VALORES SA				a	a					
, CALLE AYALA 42, 3A PLANTA-B MADRID	+34917916000									
CYCLOS SECURITIES S.A.				a			a			a
39, ΠΑΝΕΠΙΣΤΗΜΙΟΥ 39 ΑΘΗΝΑ	2103364300									
DEUTSCHE BANK S.A.					a					
1, GREAT WINCHESTER STREET LONDON	+44 20 754 54209	00441133361437								
DYNAMIC SECURITIES S.A.				a			a			a
, ΤΡΑΛΛΕΩΝ 2 & Λ.ΣΥΓΓΡΟΥ 223 ΝΕΑ ΣΜΥΡΝΗ	2103677700									
EUROBANK EQUITIES INVESTMENT FIRM S.A				a		a	a	a		a
, ΦΙΛΕΛΛΗΝΩΝ 10 & ΞΕΝΟΦΩΝΤΟΣ 13 ΑΘΗΝΑ	2103720425									
EUROBANK S.A.									a	
, ΟΘΩΝΟΣ 8 ΑΘΗΝΑ	2103337000									
EUROCORP INVESTMENT SERVICES S.A.				a			a			a
14, ΠΛ.ΦΙΛΙΚΗΣ ΕΤΑΙΡΕΙΑΣ 14 ΑΘΗΝΑ	2107263600									
EUOTRUST INVESTMENT FIRM SA				a						
113, ΣΕΒΑΣΤΟΥΠΟΛΕΩΣ 113 ΑΘΗΝΑ	2103363100									
EUROXX SECURITIES S.A.				a		a	a	a		a
7, ΠΑΛΑΙΟΛΟΓΟΥ ΧΑΛΑΝΔΡΙ	(210)-6879400	(210)-6879401								
7, ΠΑΛΕΟΛΟΓΟΥ ΧΑΛΑΝΔΡΙ	+30 2106879400	210-6879401								
G. A. PERVANAS SECURITIES- INVESTMENT SERVICES S.A.				a						
7-9, ΣΟΦΟΚΛΕΟΥΣ 7-9 ΑΘΗΝΑ	2103727200									
GLOBAL CAPITAL SECURITIES & FINANCIAL SERVICES LTD				a	a					
50, Λ.ΑΡΧΙΕΠΙΣΚΟΠΟΥ ΜΑΚΑΡΙΟΥ Γ'50	0035722710710									
HELLENIC AMERICAN SECURITIES S.A.				a		a	a			a
27, ΑΝΔΡΕΑ ΠΑΠΑΝΔΡΕΟΥ 27 ΜΑΡΟΥΣΙ	2103311100									
HELLENIC BANK (INVESTMENTS) LTD					a					
, AVE.KYRIAKΟΥ MATSI 31 - PO BOX 24747 NICOSIA	+357 22500100	357 22500110								
HSBC FRANCE									a	
109-111, Λ.ΜΕΣΟΓΕΙΩΝ 109-111	2106960000									
INDEX SECURITIES S.A.				a						
6, ΔΡΑΓΑΤΣΑΝΙΟΥ 6 ΑΘΗΝΑ	2103213920									

Athex & ATHEXClear Members List

Member Name				Stock Market			Derivatives Market		ATHEXClear Member	
	Address	Phone	Fax	Market Member	Remote Member	Market Maker	Proprietary	Market Maker	General Clearing	Direct Clearing
J. CHR. MAVRIKIS SECURITIES S.A.				a						
5, ΣΟΦΟΚΛΕΟΥΣ 5 ATHINA	2103216730									
KAPPA SECURITIES S.A.				a			a			
15, ΒΑΛΑΩΡΙΤΟΥ 15 ATHINA	2103678600									
KARAMANOF SECURITIES & INVESTMENT SERVICES S.A.				a						
2, ΠΛ.ΑΓ.ΘΕΟΔΩΡΩΝ 2 ATHINA	2103212947									
LAIKI FINANCIAL SERVICES LTD					a					
26, AVE. VYRONOS NICOSIA	357 22367367	357 22718567								
LEON DEPOLAS SECURITIES S.A.				a		a	a			
1, ΧΡΗΣΤΟΥ ΛΑΔΑ 1 ATHINA	2103213276 -28									
MEGA EQUITY SECURITIES & FINANCIAL SERVICES PUBLIC LTD				a	a		a			
42-44, ΛΕΩΦ.ΓΡΙΒΑ ΔΙΓΕΝΗ 42-44	0035722711711									
MERIT SECURITIES S.A				a		a	a			a
5, ΣΟΦΟΚΛΕΟΥΣ 5 ATHINA	2103671880									
MERRILL LYNCH INTERNATIONAL				a	a					
2, 2 KING EDWARD STREET LONDON	+44 20276281000									
N. CHRYSOCHOIDIS SECURITIES S.A.				a			a			a
7-9, ΣΟΦΟΚΛΕΟΥΣ 7-9 ATHINA	2103213913									
NATIONAL BANK OF GREECE S.A.				a		a	a		a	
86, ΑΙΟΛΟΥ STR. ATHINA	(210)-3341000	(210)-3228187								
68, ΑΚΑΔΙΜΙΑΣ STR. ATHINA	(210)-3328817	(210)-3328678								
NATIONAL SECURITIES S.A.				a		a	a	a		
66, ΛΕΩΦ. ΚΗΦΙΣΙΑΣ 66 (ΚΤΗΡΙΟ Α) MAROUSI	2103328784									
NUNTIUS BROKERAGE AND INVESTMENT SERVICES S.A				a						
6, ΔΡΑΓΑΤΣΑΝΙΟΥ 6 ATHINA	2103350599									
ONE PLUS CAPITAL LIMITED				a	a					
, 75 PRODROMOU AVENUE NICOSIA 1307	35722873760									
OPTIMA BANK S.A.				a		a	a	a	a	
32, ΑΙΓΙΑΛΕΙΑΣ 32 & ΠΑΡΑΔΕΙΣΟΥ MAROUSI	2108173111									
PANTELAKIS SECURITIES S.A.				a		a	a	a		
57, ΕΘΝΙΚΗΣ ΑΝΤΙΣΤΑΣΕΩΣ 57, ΚΤΙΠΙΟ Β CHALANDRI	2106965000									
PEGASUS SECURITIES S.A				a			a			
17, ΒΑΛΑΩΡΙΤΟΥ 17 & ΑΜΕΡΙΚΗΣ ATHINA	2103670700									
PIRAEUS BANK S.A.				a			a		a	
4, ΑΜΕΡΙΚΗΣ STR. ATHINA	(210)-3335000	(210)-3335079								
4, ΑΜΕΡΙΚΗΣ STR ATHINA	(210)-3335918	(210)-3254207								
4, ΑΜΕΡΙΚΗΣ ATHINA	+30 2103335000	210-3335079								
PIRAEUS SECURITIES S. A.				a		a	a	a		a
10, ΣΤΑΔΙΟΥ 10 ATHINA	2103354100									
PROCHOICE SECURITIES LTD				a	a					
57, ΛΕΩΦ.ΣΠΥΡΟΥ ΚΥΠΡΙΑΝΟΥ 57, ΑΚΙΝΗΤΑ Φ	035724661192									
SHARELINK SECURITIES & FINANCIAL SERVICES LTD				a	a		a			
6, HOUSE-ΘΕΟΤΟΚΗ 6 ΜΕΓΑΡΟ ΕΛΛΗΝΑ	+357 22554200									
SOCIETE GENERALE S.A.				a	a		a			
, 17 COURS VALMY, CEDEX	+157290504									
SOLIDUS SECURITIES S.A				a			a			a
64, ΛΟΥΙΖΗΣ ΡΙΑΝΚΟΥΡ 64 ATHINA	2106900600									
ST. EM. LAVRENTAKIS SECURITIES S.A.				a			a			
7-9, ΣΟΦΟΚΛΕΟΥΣ 7-9 ATHINA	2103213336									
THE CYPRUS INVESTMENT & SECURITIES CORPORATION LTD				a	a					
154, ΛΕΩΦ. ΛΕΜΕΣΟΥ 154	00357222121700									
UBS EUROPE SE				a	a					
, OPERNTURM, BOCKENHEIMER LANDSTRASSE 2-4	496921790									
UBS LIMITED					a					
1, FINSBURY AVENUE LONDON	+44 2075687135									

List of Stocks under Market Making operations

Securities	Market Maker	Start Market Making	Stock Category
MLS MULTIMEDIA SA (CR)			Suspension Status
	PIRAEUS SECURITIES S. A.	01/08/2019	
ALPHA ETF FTSE Athex Large Cap			Exchange Traded Funds (ETFs)
	ALPHA FINANCE INVESTMENT SERVICES S.A.	02/01/1900	
	NATIONAL SECURITIES S.A.	02/01/1900	
ADMIE (IPTO) HOLDING S.A. (CR)			Main Market
	HELLENIC AMERICAN SECURITIES S.A.	09/03/2020	
	PIRAEUS SECURITIES S. A.	29/06/2017	
AEGEAN AIRLINES (CR)			Main Market
	EUROBANK EQUITIES INVESTMENT FIRM S.A	22/09/2020	
ALPHA BANK (CR)			Main Market
	ALPHA FINANCE INVESTMENT SERVICES S.A.	29/02/2016	
	EUROBANK EQUITIES INVESTMENT FIRM S.A	22/10/2006	
	HELLENIC AMERICAN SECURITIES S.A.	25/07/2014	
	LEON DEPOLAS SECURITIES S.A.	04/01/2016	
	MERIT SECURITIES S.A	03/09/2012	
	NATIONAL SECURITIES S.A.	02/01/1900	
	PIRAEUS SECURITIES S. A.	28/05/2009	
AS COMPANY SA (CR)			Main Market
	EUROBANK EQUITIES INVESTMENT FIRM S.A	01/04/2019	
ATTICA BANK S.A. (CR)			Main Market
	EUROBANK EQUITIES INVESTMENT FIRM S.A	11/11/2019	
	EUROXX SECURITIES S.A.	22/01/2016	
	PIRAEUS SECURITIES S. A.	20/09/2017	
ATTICA HOLDINGS (CR)			Main Market
	HELLENIC AMERICAN SECURITIES S.A.	28/12/2017	
AUTOHELLAS SA (CR)			Main Market
	ALPHA FINANCE INVESTMENT SERVICES S.A.	01/07/2019	
	EUROXX SECURITIES S.A.	02/07/2018	
AVAX S.A. (CR)			Main Market
	EUROBANK EQUITIES INVESTMENT FIRM S.A	14/12/2015	
AVE (CR)			Main Market
	EUROXX SECURITIES S.A.	05/06/2020	
BRIQ PROPERTIES (CR)			Main Market
	EUROBANK EQUITIES INVESTMENT FIRM S.A	09/09/2019	
BYTE COMPUTER SA (CR)			Main Market
	MERIT SECURITIES S.A	04/08/2008	
CC HBC AG (CR)			Main Market
	NATIONAL SECURITIES S.A.	02/01/1900	
	PIRAEUS SECURITIES S. A.	04/05/2015	
CENERGY HOLDINGS (CB)			Main Market
	ALPHA FINANCE INVESTMENT SERVICES S.A.	02/01/2016	
	EUROBANK EQUITIES INVESTMENT FIRM S.A	02/01/2016	
CNL CAPITAL (CR)			Main Market
	MERIT SECURITIES S.A	01/10/2018	
EKTER SA (CR)			Main Market
	EUROBANK EQUITIES INVESTMENT FIRM S.A	16/10/2017	
	LEON DEPOLAS SECURITIES S.A.	21/05/2018	
ELASTRON (CR)			Main Market
	LEON DEPOLAS SECURITIES S.A.	20/02/2017	
ELLAKTOR (CR)			Main Market
	ALPHA FINANCE INVESTMENT SERVICES S.A.	18/03/2019	
	EUROBANK EQUITIES INVESTMENT FIRM S.A	01/06/2012	
	EUROXX SECURITIES S.A.	24/09/2018	
	NATIONAL SECURITIES S.A.	02/01/1900	
	PIRAEUS SECURITIES S. A.	22/10/2018	
ELTON SA (CR)			Main Market
	BETA SECURITIES S.A.	03/09/2012	
	LEON DEPOLAS SECURITIES S.A.	01/04/2019	
ELVALHALCOR (CR)			Main Market
	ALPHA FINANCE INVESTMENT SERVICES S.A.	07/05/2018	
	EUROBANK EQUITIES INVESTMENT FIRM S.A	07/05/2018	
ENTERSOFT (CR)			Main Market
	EUROBANK EQUITIES INVESTMENT FIRM S.A	22/06/2020	

## List of Stocks under Market Making operations

Securities	Stock Category
Market Maker	Start Market Making
<b>EUROBANK HOLDINGS (CR)</b>	Main Market
ALPHA FINANCE INVESTMENT SERVICES S.A.	09/01/2006
EUROBANK EQUITIES INVESTMENT FIRM S.A	01/06/2012
HELLENIC AMERICAN SECURITIES S.A.	25/07/2014
LEON DEPOLAS SECURITIES S.A.	30/11/2018
MERIT SECURITIES S.A	06/11/2017
NATIONAL SECURITIES S.A.	02/01/1900
PIRAEUS SECURITIES S. A.	28/09/2009
<b>EUROPEAN RELIANCE INSUR. (CR)</b>	Main Market
PANTELAKIS SECURITIES S.A.	15/07/2019
<b>EYDAP S.A. (CR)</b>	Main Market
ALPHA FINANCE INVESTMENT SERVICES S.A.	27/01/2020
EUROBANK EQUITIES INVESTMENT FIRM S.A	10/06/2019
<b>FOURLIS (CR)</b>	Main Market
EUROBANK EQUITIES INVESTMENT FIRM S.A	01/12/2016
PIRAEUS SECURITIES S. A.	06/03/2017
<b>GEK TERNA (CR)</b>	Main Market
PIRAEUS SECURITIES S. A.	29/08/2019
<b>GR. SARANTIS S.A. (CR)</b>	Main Market
BETA SECURITIES S.A.	14/05/2012
EUROBANK EQUITIES INVESTMENT FIRM S.A	24/10/2016
<b>HELLENIC EXCHANGES-A.S.E. (CR)</b>	Main Market
HELLENIC AMERICAN SECURITIES S.A.	01/09/2014
NATIONAL SECURITIES S.A.	02/01/1900
PIRAEUS SECURITIES S. A.	04/05/2015
<b>HELLENIC PETROLEUM (CR)</b>	Main Market
HELLENIC AMERICAN SECURITIES S.A.	14/09/2015
PIRAEUS SECURITIES S. A.	20/03/2017
<b>IKTINOS HELLAS SA (CR)</b>	Main Market
ALPHA FINANCE INVESTMENT SERVICES S.A.	01/04/2019
EUROBANK EQUITIES INVESTMENT FIRM S.A	25/02/2019
NATIONAL SECURITIES S.A.	02/01/1900
<b>INTERCONTINENTAL (CR)</b>	Main Market
LEON DEPOLAS SECURITIES S.A.	03/06/2019
<b>INTRACOM HOLDINGS (CR)</b>	Main Market
LEON DEPOLAS SECURITIES S.A.	08/10/2018
<b>JUMBO SA (CR)</b>	Main Market
EUROBANK EQUITIES INVESTMENT FIRM S.A	25/05/2020
MERIT SECURITIES S.A	06/11/2017
PIRAEUS SECURITIES S. A.	06/03/2017
<b>KARAMOLEGOS SA (CR)</b>	Main Market
EUROXX SECURITIES S.A.	04/10/2019
<b>KLOUKINAS - LAPPAS SA (CR)</b>	Main Market
BETA SECURITIES S.A.	22/09/2014
<b>KRI-KRI S.A. (CR)</b>	Main Market
EUROBANK EQUITIES INVESTMENT FIRM S.A	07/05/2018
LEON DEPOLAS SECURITIES S.A.	16/01/2017
<b>LAMDA DEVELOPMENT SA (CR)</b>	Main Market
EUROBANK EQUITIES INVESTMENT FIRM S.A	08/12/2014
PANTELAKIS SECURITIES S.A.	06/11/2017
PIRAEUS SECURITIES S. A.	29/06/2017
<b>LAMPSA HOTEL SA (CR)</b>	Main Market
LEON DEPOLAS SECURITIES S.A.	16/01/2017
<b>MARFIN INVESTMENT GROUP (CR)</b>	Main Market
EUROBANK EQUITIES INVESTMENT FIRM S.A	23/03/2015
PIRAEUS SECURITIES S. A.	02/02/2009
<b>MOTOR OIL (CR)</b>	Main Market
EUROBANK EQUITIES INVESTMENT FIRM S.A	22/10/2006
HELLENIC AMERICAN SECURITIES S.A.	01/09/2014
LEON DEPOLAS SECURITIES S.A.	01/04/2019
MERIT SECURITIES S.A	25/02/2019
NATIONAL SECURITIES S.A.	02/01/1900
PIRAEUS SECURITIES S. A.	04/05/2015
<b>MYTILINEOS (CR)</b>	Main Market
ALPHA FINANCE INVESTMENT SERVICES S.A.	15/04/2019
EUROBANK EQUITIES INVESTMENT FIRM S.A	20/09/2017
MERIT SECURITIES S.A	25/02/2019
NATIONAL SECURITIES S.A.	02/01/1900
PIRAEUS SECURITIES S. A.	04/05/2015

## List of Stocks under Market Making operations

Securities	Stock Category
Market Maker	Start Market Making
<b>NATIONAL BANK (CR)</b>	<b>Main Market</b>
ALPHA FINANCE INVESTMENT SERVICES S.A.	09/01/2006
EUROBANK EQUITIES INVESTMENT FIRM S.A	22/10/2006
HELLENIC AMERICAN SECURITIES S.A.	25/07/2014
LEON DEPOLAS SECURITIES S.A.	20/05/2015
MERIT SECURITIES S.A	03/09/2012
NATIONAL SECURITIES S.A.	02/01/1900
PIRAEUS SECURITIES S. A.	08/09/2008
<b>OPAP (CR)</b>	<b>Main Market</b>
ALPHA FINANCE INVESTMENT SERVICES S.A.	09/01/2006
EUROBANK EQUITIES INVESTMENT FIRM S.A	22/10/2006
HELLENIC AMERICAN SECURITIES S.A.	25/07/2014
MERIT SECURITIES S.A	20/03/2017
NATIONAL SECURITIES S.A.	02/01/1900
PIRAEUS SECURITIES S. A.	04/05/2015
<b>OTE (CR)</b>	<b>Main Market</b>
ALPHA FINANCE INVESTMENT SERVICES S.A.	09/01/2006
EUROBANK EQUITIES INVESTMENT FIRM S.A	22/10/2006
HELLENIC AMERICAN SECURITIES S.A.	25/07/2014
LEON DEPOLAS SECURITIES S.A.	20/04/2015
MERIT SECURITIES S.A	20/03/2017
NATIONAL SECURITIES S.A.	02/01/1900
PIRAEUS SECURITIES S. A.	08/09/2008
<b>P.P.A. S.A. (CR)</b>	<b>Main Market</b>
EUROBANK EQUITIES INVESTMENT FIRM S.A	06/02/2019
<b>PAPOUTSANIS (CR)</b>	<b>Main Market</b>
ALPHA FINANCE INVESTMENT SERVICES S.A.	19/11/2018
BETA SECURITIES S.A.	25/11/2013
<b>PETROPOULOS PETROS (CR)</b>	<b>Main Market</b>
EUROBANK EQUITIES INVESTMENT FIRM S.A	01/04/2019
PANTELAKIS SECURITIES S.A.	16/03/2020
<b>PIRAEUS BANK (CR)</b>	<b>Main Market</b>
ALPHA FINANCE INVESTMENT SERVICES S.A.	15/04/2019
EUROBANK EQUITIES INVESTMENT FIRM S.A	22/10/2006
EUROXX SECURITIES S.A.	15/02/2016
HELLENIC AMERICAN SECURITIES S.A.	25/07/2014
LEON DEPOLAS SECURITIES S.A.	30/11/2018
MERIT SECURITIES S.A	16/09/2013
NATIONAL SECURITIES S.A.	02/01/1900
PIRAEUS SECURITIES S. A.	16/02/2009
<b>PLAISIO COMPUTERS SA (CR)</b>	<b>Main Market</b>
EUROBANK EQUITIES INVESTMENT FIRM S.A	02/03/2015
<b>PPC (CR)</b>	<b>Main Market</b>
ALPHA FINANCE INVESTMENT SERVICES S.A.	09/01/2006
EUROBANK EQUITIES INVESTMENT FIRM S.A	22/10/2006
HELLENIC AMERICAN SECURITIES S.A.	01/09/2014
MERIT SECURITIES S.A	06/11/2017
NATIONAL SECURITIES S.A.	02/01/1900
PIRAEUS SECURITIES S. A.	28/09/2009
<b>PROFILE SA (CR)</b>	<b>Main Market</b>
PANTELAKIS SECURITIES S.A.	01/07/2019
<b>QUEST HOLDINGS (CR)</b>	<b>Main Market</b>
BETA SECURITIES S.A.	26/03/2018
EUROBANK EQUITIES INVESTMENT FIRM S.A	28/01/2019
<b>SPIROY AGRICULTURE SA (CR)</b>	<b>Main Market</b>
EUROBANK EQUITIES INVESTMENT FIRM S.A	02/09/2019
<b>TERNA ENERGY (CR)</b>	<b>Main Market</b>
PIRAEUS SECURITIES S. A.	09/12/2019
<b>THRACE PLASTICS SA (CR)</b>	<b>Main Market</b>
ALPHA FINANCE INVESTMENT SERVICES S.A.	26/03/2018
EUROBANK EQUITIES INVESTMENT FIRM S.A	26/03/2018
<b>TITAN CEMENT (CB)</b>	<b>Main Market</b>
EUROBANK EQUITIES INVESTMENT FIRM S.A	06/11/2019
<b>VIOHALCO SA/NV (CB)</b>	<b>Main Market</b>
ALPHA FINANCE INVESTMENT SERVICES S.A.	11/03/2008
EUROBANK EQUITIES INVESTMENT FIRM S.A	04/03/2014
MERIT SECURITIES S.A	17/03/2014



Underlying Asset				Derivatives Market													
Price max	Price min	Closing price	change	Delivery Month	Open price	Price max	Price min	Last price	Closing price	Last Bid	Last Ask	Fixing price*	Life high	Life low	Trades	Volume	Open Interest
<b>FTSE/Athex Large Cap</b>																	
1,493.44	1,479.95	1,487.72	-0.12%	October 2020	1,489.75	1,492.75	1,477.00	1,492.00	1,492.00	---	---		1,602.00	---	105	451	3,878
				November 2020	1,486.75	1,487.25	1,485.00	1,486.00	1,486.00	---	---		1,586.75	---	6	18	295
				December 2020	---	---	---	---	1,496.25	---	---		---	---	---	---	---
				March 2021	---	---	---	---	1,503.75	---	---		---	---	---	---	---
				June 2021	---	---	---	---	1,511.25	---	---		---	---	---	---	---
				September 2021	---	---	---	---	1,519.00	---	---		---	---	---	---	---

(Trade Unit: 1 Index Point x 2E, Cash Settlement)

Derivatives notes

Fixing prices and final open positions can be retrieved from the following path <http://www.helex.gr/el/web/guest/statistics-end-of-day-derivatives>

Underlying Asset				Derivatives Market													
Price max	Price min	Closing price	change	Delivery Month	Open price	Price max	Price min	Last price	Closing price	Last Bid	Last Ask	Fixing price*	Life high	Life low	Trades	Volume	Open Interest
<b>ADMIE (IPTO) HOLDING S.A. (CR)</b>				(Contract Size: 100 Securities, Physical Delivery)													
2.33	2.18	2.31	5.00%	December 2020	2.22	2.33	2.22	2.31	2.31	---	---	---	2.42	---	116	1,390	5,963
				March 2021	---	---	---	---	2.22	---	---	---	---	---	---	---	---
				June 2021	---	---	---	---	2.23	---	---	---	---	---	---	---	---
				September 2021	---	---	---	---	2.24	---	---	---	---	---	---	---	---
<b>ALPHA BANK (CR)</b>				(Contract Size: 100 Securities, Physical Delivery)													
0.5196	0.506	0.5138	-0.62%	December 2020	0.522	0.522	0.508	0.513	0.513	---	---	---	0.617	---	160	3,824	91,809
				March 2021	---	---	---	---	0.522	---	---	---	---	---	---	---	---
				June 2021	---	---	---	---	0.525	---	---	---	---	---	---	---	---
				September 2021	---	---	---	---	0.527	---	---	---	---	---	---	---	---
<b>ATTICA BANK S.A. (CR)</b>				(Contract Size: 100 Securities, Physical Delivery)													
0.1758	0.1684	0.1726	-1.15%	December 2020	0.167	0.178	0.167	0.178	0.178	---	---	---	0.190	---	3	7	225
				March 2021	---	---	---	---	0.176	---	---	---	---	---	---	---	---
				June 2021	---	---	---	---	0.177	---	---	---	---	---	---	---	---
				September 2021	---	---	---	---	0.178	---	---	---	---	---	---	---	---
<b>CC HBC AG (CR)</b>				(Contract Size: 100 Securities, Physical Delivery)													
21.4	21.21	21.34	-1.61%	December 2020	21.29	21.29	21.29	21.29	21.29	---	---	---	22.97	---	1	2	350
				March 2021	---	---	---	---	21.90	---	---	---	---	---	---	---	---
				June 2021	---	---	---	---	22.01	---	---	---	---	---	---	---	---
				September 2021	---	---	---	---	22.12	---	---	---	---	---	---	---	---
<b>CENERGY HOLDINGS (CB)</b>				(Contract Size: 100 Securities, Physical Delivery)													
1.044	1	1.044	4.40%	December 2020	1.00	1.06	1.00	1.05	1.05	---	---	---	1.07	---	90	383	1,509
				March 2021	---	---	---	---	1.01	---	---	---	---	---	---	---	---
				June 2021	---	---	---	---	1.01	---	---	---	---	---	---	---	---
				September 2021	---	---	---	---	1.02	---	---	---	---	---	---	---	---
<b>ELLAKTOR (CR)</b>				(Contract Size: 100 Securities, Physical Delivery)													
1.387	1.321	1.371	1.93%	December 2020	1.36	1.39	1.33	1.37	1.37	---	---	---	1.52	---	74	560	7,237
				March 2021	---	---	---	---	1.36	---	---	---	---	---	---	---	---
				June 2021	---	---	---	---	1.36	---	---	---	---	---	---	---	---
				September 2021	---	---	---	---	1.37	---	---	---	---	---	---	---	---
<b>EUROBANK HOLDINGS (CR)</b>				(Contract Size: 100 Securities, Physical Delivery)													
0.3699	0.361	0.3659	1.02%	December 2020	0.364	0.371	0.362	0.368	0.368	---	---	---	0.435	---	60	2,125	43,252
				March 2021	---	---	---	---	0.366	---	---	---	---	---	---	---	---
				June 2021	---	---	---	---	0.367	---	---	---	---	---	---	---	---
				September 2021	---	---	---	---	0.369	---	---	---	---	---	---	---	---

Derivatives notes

Fixing prices and final open positions can be retrieved from the following path <http://www.helex.gr/el/web/guest/statistics-end-of-day-derivatives>

Underlying Asset				Derivatives Market													
Price max	Price min	Closing price	change	Delivery Month	Open price	Price max	Price min	Last price	Closing price	Last Bid	Last Ask	Fixing price*	Life high	Life low	Trades	Volume	Open Interest
<b>EYDAP S.A. (CR)</b>				(Contract Size: 100 Securities, Physical Delivery)													
6.67	6.59	6.59	-0.90%	December 2020	---	---	---	---	6.68	---	---	---	7.51	---	---	---	150
				March 2021	---	---	---	---	6.71	---	---	---	---	---	---	---	---
				June 2021	---	---	---	---	6.75	---	---	---	---	---	---	---	---
				September 2021	---	---	---	---	6.78	---	---	---	---	---	---	---	---
<b>FOURLIS (CR)</b>				(Contract Size: 100 Securities, Physical Delivery)													
3.88	3.835	3.845	-0.39%	December 2020	---	---	---	---	3.88	---	---	---	4.50	---	---	---	373
				March 2021	---	---	---	---	3.90	---	---	---	---	---	---	---	---
				June 2021	---	---	---	---	3.92	---	---	---	---	---	---	---	---
				September 2021	---	---	---	---	3.94	---	---	---	---	---	---	---	---
<b>GEK TERNA (CR)</b>				(Contract Size: 100 Securities, Physical Delivery)													
6.21	6.07	6.15	0.00%	December 2020	6.16	6.22	6.15	6.17	6.17	---	---	---	6.87	---	22	76	3,444
				March 2021	---	---	---	---	6.21	---	---	---	---	---	---	---	---
				June 2021	---	---	---	---	6.24	---	---	---	---	---	---	---	---
				September 2021	---	---	---	---	6.27	---	---	---	---	---	---	---	---
<b>HELLENIC EXCHANGES-A.S.E. (CR)</b>				(Contract Size: 100 Securities, Physical Delivery)													
2.83	2.78	2.79	-0.36%	December 2020	2.81	2.81	2.81	2.81	2.81	---	---	---	3.06	---	2	3	2,000
				March 2021	---	---	---	---	2.83	---	---	---	---	---	---	---	---
				June 2021	---	---	---	---	2.84	---	---	---	---	---	---	---	---
				September 2021	---	---	---	---	2.86	---	---	---	---	---	---	---	---
<b>HELLENIC PETROLEUM (CR)</b>				(Contract Size: 100 Securities, Physical Delivery)													
4.75	4.6	4.63	-2.53%	December 2020	4.72	4.72	4.64	4.66	4.66	---	---	---	5.30	---	9	22	1,585
				March 2021	---	---	---	---	4.80	---	---	---	---	---	---	---	---
				June 2021	---	---	---	---	4.82	---	---	---	---	---	---	---	---
				September 2021	---	---	---	---	4.84	---	---	---	---	---	---	---	---
<b>INTRACOM HOLDINGS (CR)</b>				(Contract Size: 100 Securities, Physical Delivery)													
0.731	0.665	0.715	9.33%	December 2020	0.641	0.720	0.641	0.698	0.698	---	---	---	0.720	---	46	294	929
				March 2021	---	---	---	---	0.660	---	---	---	---	---	---	---	---
				June 2021	---	---	---	---	0.664	---	---	---	---	---	---	---	---
				September 2021	---	---	---	---	0.667	---	---	---	---	---	---	---	---
<b>JUMBO SA (CR)</b>				(Contract Size: 100 Securities, Physical Delivery)													
14.95	14.46	14.75	1.31%	December 2020	14.47	14.83	14.47	14.75	14.75	---	---	---	16.64	---	28	62	292
				March 2021	---	---	---	---	14.70	---	---	---	---	---	---	---	---
				June 2021	---	---	---	---	14.77	---	---	---	---	---	---	---	---
				September 2021	---	---	---	---	14.85	---	---	---	---	---	---	---	---

Derivatives notes

Fixing prices and final open positions can be retrieved from the following path <http://www.helex.gr/el/web/guest/statistics-end-of-day-derivatives>

Underlying Asset				Derivatives Market													
Price max	Price min	Closing price	change	Delivery Month	Open price	Price max	Price min	Last price	Closing price	Last Bid	Last Ask	Fixing price*	Life high	Life low	Trades	Volume	Open Interest
<b>LAMDA DEVELOPMENT SA (CR)</b>				(Contract Size: 100 Securities, Physical Delivery)													
5.56	5.41	5.48	-0.54%	December 2020	5.48	5.50	5.45	5.47	5.47	---	---	---	5.99	---	19	59	2,080
				March 2021	---	---	---	---	5.56	---	---	---	---	---	---	---	---
				June 2021	---	---	---	---	5.59	---	---	---	---	---	---	---	---
				September 2021	---	---	---	---	5.62	---	---	---	---	---	---	---	---
<b>MARFIN INVESTMENT GROUP (CR)</b>				(Contract Size: 100 Securities, Physical Delivery)													
0.0302	0.0213	0.026	-13.33%	December 2020	0.029	0.031	0.023	0.025	0.025	---	---	---	0.059	---	83	2,653	48,103
				March 2021	---	---	---	---	0.030	---	---	---	---	---	---	---	---
				June 2021	---	---	---	---	0.030	---	---	---	---	---	---	---	---
				September 2021	---	---	---	---	0.031	---	---	---	---	---	---	---	---
<b>MOTOR OIL (CR)</b>				(Contract Size: 100 Securities, Physical Delivery)													
10.1	9.9	9.9	-1.20%	December 2020	10.01	10.03	9.93	9.93	9.93	---	---	---	11.85	---	23	81	670
				March 2021	---	---	---	---	10.12	---	---	---	13.27	---	---	---	2
				June 2021	---	---	---	---	10.17	---	---	---	---	---	---	---	---
				September 2021	---	---	---	---	10.22	---	---	---	---	---	---	---	---
<b>MYTILINEOS (CR)</b>				(Contract Size: 100 Securities, Physical Delivery)													
9.2	8.96	9.13	1.56%	December 2020	9.04	9.23	8.99	9.13	9.13	---	---	---	9.23	---	77	324	4,144
				March 2021	---	---	---	---	9.08	---	---	---	---	---	---	---	---
				June 2021	---	---	---	---	9.12	---	---	---	---	---	---	---	---
				September 2021	---	---	---	---	9.17	---	---	---	---	---	---	---	---
<b>NATIONAL BANK (CR)</b>				(Contract Size: 100 Securities, Physical Delivery)													
1.134	1.1085	1.1085	-1.38%	December 2020	1.12	1.14	1.10	1.12	1.12	---	---	---	1.26	---	106	2,742	38,064
				March 2021	---	---	---	---	1.13	---	---	---	---	---	---	---	---
				June 2021	---	---	---	---	1.14	---	---	---	---	---	---	---	---
				September 2021	---	---	---	---	1.15	---	---	---	---	---	---	---	---
<b>OPAP (CR)</b>				(Contract Size: 100 Securities, Physical Delivery)													
8.12	7.97	8.11	1.50%	December 2020	8.06	8.14	8.00	8.14	8.14	---	---	---	8.74	---	23	67	2,147
				March 2021	---	---	---	---	8.07	---	---	---	---	---	---	---	---
				June 2021	---	---	---	---	8.11	---	---	---	---	---	---	---	---
				September 2021	---	---	---	---	8.15	---	---	---	---	---	---	---	---
<b>OTE (CR)</b>				(Contract Size: 100 Securities, Physical Delivery)													
12.82	12.47	12.53	-2.11%	December 2020	12.80	12.80	12.50	12.52	12.52	---	---	---	13.86	---	93	303	1,780
				March 2021	---	---	---	---	12.92	---	---	---	---	---	---	---	---
				June 2021	---	---	---	---	12.99	---	---	---	---	---	---	---	---
				September 2021	---	---	---	---	13.05	---	---	---	---	---	---	---	---

Derivatives notes

Fixing prices and final open positions can be retrieved from the following path <http://www.helex.gr/el/web/guest/statistics-end-of-day-derivatives>

Underlying Asset				Derivatives Market													
Price max	Price min	Closing price	change	Delivery Month	Open price	Price max	Price min	Last price	Closing price	Last Bid	Last Ask	Fixing price*	Life high	Life low	Trades	Volume	Open Interest
<b>P.P.A. S.A. (CR)</b>				(Contract Size: 100 Securities, Physical Delivery)													
16.78	16.32	16.36	0.12%	December 2020	---	---	---	---	16.41	---	---	---	17.57	---	---	---	304
				March 2021	---	---	---	---	16.50	---	---	---	---	---	---	---	---
				June 2021	---	---	---	---	16.58	---	---	---	---	---	---	---	---
				September 2021	---	---	---	---	16.66	---	---	---	---	---	---	---	---
<b>PIRAEUS BANK (CR)</b>				(Contract Size: 100 Securities, Physical Delivery)													
1.0965	1.065	1.0655	-1.71%	December 2020	1.08	1.08	1.06	1.07	1.07	---	---	---	1.28	---	82	1,299	12,613
				March 2021	---	---	---	---	1.09	---	---	---	---	---	---	---	---
				June 2021	---	---	---	---	1.10	---	---	---	---	---	---	---	---
				September 2021	---	---	---	---	1.11	---	---	---	---	---	---	---	---
<b>PPC (CR)</b>				(Contract Size: 100 Securities, Physical Delivery)													
5.11	4.984	5.05	-0.79%	December 2020	5.07	5.11	4.99	5.05	5.05	---	---	---	5.30	---	68	273	9,400
				March 2021	---	---	---	---	5.14	---	---	---	---	---	---	---	---
				June 2021	---	---	---	---	5.16	---	---	---	---	---	---	---	---
				September 2021	---	---	---	---	5.19	---	---	---	---	---	---	---	---
<b>TERNA ENERGY (CR)</b>				(Contract Size: 100 Securities, Physical Delivery)													
11.3	11.04	11.2	0.36%	December 2020	11.17	11.26	11.14	11.23	11.23	---	---	---	12.12	---	13	116	3,451
				March 2021	---	---	---	---	11.27	---	---	---	---	---	---	---	---
				June 2021	---	---	---	---	11.32	---	---	---	---	---	---	---	---
				September 2021	---	---	---	---	11.38	---	---	---	---	---	---	---	---
<b>TITAN CEMENT (CB)</b>				(Contract Size: 100 Securities, Physical Delivery)													
11	10.8	10.9	0.00%	December 2020	10.86	11.00	10.86	11.00	11.00	---	---	---	11.52	---	9	23	938
				March 2021	---	---	---	---	11.00	---	---	---	---	---	---	---	---
				June 2021	---	---	---	---	11.06	---	---	---	---	---	---	---	---
				September 2021	---	---	---	---	11.11	---	---	---	---	---	---	---	---
<b>VIOHALCO SA/NV (CB)</b>				(Contract Size: 100 Securities, Physical Delivery)													
2.54	2.43	2.5	2.88%	December 2020	2.43	2.54	2.43	2.50	2.50	---	---	---	2.81	---	34	209	2,897
				March 2021	---	---	---	---	2.45	---	---	---	---	---	---	---	---
				June 2021	---	---	---	---	2.47	---	---	---	---	---	---	---	---
				September 2021	---	---	---	---	2.48	---	---	---	---	---	---	---	---

Derivatives notes

Fixing prices and final open positions can be retrieved from the following path <http://www.helex.gr/el/web/guest/statistics-end-of-day-derivatives>

FTSE/Athex Large Cap

(Trade Unit: 1 Index Point x 2€ - Exercise Style: European, Cash Settlement)

Exercise Price	Call Options														Put Options																		
	October 2020							November 2020							Other Months		October 2020							November 2020							Other Months		Exercise Price
	Open price	Price max	Price min	Last price	Closing price	Volume	Open Interest	Open price	Price max	Price min	Last price	Closing price	Volume	Open Interest	Volume	Open Interest	Open price	Price max	Price min	Last price	Closing price	Volume	Open Interest	Open price	Price max	Price min	Last price	Closing price	Volume	Open Interest	Volume	Open Interest	
1,050	-	-	-	-	-	-	-	-	-	-	-	-	-	-	-	-	-	-	-	-	-	-	-	-	-	-	-	-	-	-	-	-	
1,075	-	-	-	-	-	-	-	-	-	-	-	-	-	-	-	-	-	-	-	-	-	-	-	-	-	-	-	-	-	-	-	-	1,075
1,100	-	-	-	-	-	-	-	-	-	-	-	-	-	-	-	-	-	-	-	-	-	-	-	-	-	-	-	-	-	-	-	-	1,100
1,125	-	-	-	-	-	-	-	-	-	-	-	-	-	-	-	-	-	-	-	-	-	-	-	-	-	-	-	-	-	-	-	-	1,125
1,150	-	-	-	-	-	-	-	-	-	-	-	-	-	-	-	-	-	-	-	-	-	-	-	-	-	-	-	-	-	-	-	-	1,150
1,175	-	-	-	-	-	-	-	-	-	-	-	-	-	-	-	-	-	-	-	-	-	-	-	-	-	-	-	-	-	-	-	-	1,175
1,200	-	-	-	-	-	-	-	-	-	-	-	-	-	-	-	-	-	-	-	-	-	-	-	-	-	-	-	-	-	-	-	-	1,200
1,225	-	-	-	-	-	-	-	-	-	-	-	-	-	-	-	-	-	-	-	-	-	-	-	-	-	-	-	-	-	-	-	-	1,225
1,250	-	-	-	-	-	-	-	-	-	-	-	-	-	-	-	-	-	-	-	-	-	-	-	-	-	-	-	-	-	-	-	-	1,250
1,275	-	-	-	-	-	-	-	-	-	-	-	-	-	-	-	-	-	-	-	-	-	-	-	-	-	-	-	-	-	-	-	-	1,275
1,300	-	-	-	-	-	-	-	-	-	-	-	-	-	-	-	-	-	-	-	-	-	-	-	-	-	-	-	-	-	-	-	-	1,300
1,325	-	-	-	-	-	-	-	-	-	-	-	-	-	-	-	-	-	-	-	-	-	-	-	-	-	-	-	-	-	-	-	-	1,325
1,350	0.00	0.00	0.00	-	148.00	-	-	0.00	0.00	0.00	-	160.00	-	-	-	0.00	0.00	0.00	-	2.60	-	-	0.00	0.00	0.00	-	14.75	-	-	-	-	1,350	
1,375	0.00	0.00	0.00	-	125.00	-	-	0.00	0.00	0.00	-	141.00	-	-	-	0.00	0.00	0.00	-	4.80	-	-	0.00	0.00	0.00	-	20.25	-	-	-	-	1,375	
1,400	0.00	0.00	0.00	-	103.00	-	-	0.00	0.00	0.00	-	123.00	-	-	-	0.00	0.00	0.00	-	8.30	-	6	0.00	0.00	0.00	-	26.75	-	-	-	-	1,400	
1,425	0.00	0.00	0.00	-	83.50	-	-	0.00	0.00	0.00	-	106.00	-	-	-	0.00	0.00	0.00	-	13.50	-	-	0.00	0.00	0.00	-	34.75	-	-	-	-	1,425	
1,450	0.00	0.00	0.00	-	66.00	-	-	0.00	0.00	0.00	-	90.00	-	-	-	22.25	0.00	22.25	22.25	22.25	22.25	4	22	52.00	53.00	52.00	53.00	53.00	2	20	-	1,450	
1,475	0.00	0.00	0.00	-	50.50	-	40	0.00	0.00	0.00	-	76.00	-	40	-	0.00	0.00	0.00	-	30.25	-	40	0.00	0.00	0.00	-	55.50	-	41	-	-	1,475	
1,500	0.00	0.00	0.00	-	37.50	-	31	0.00	0.00	0.00	-	64.00	-	-	-	39.00	0.00	39.00	39.00	39.00	39.00	1	81	0.00	0.00	0.00	-	68.00	-	21	-	-	1,500
1,525	18.75	23.25	18.75	23.25	23.25	3	31	0.00	0.00	0.00	-	53.00	-	20	-	0.00	23.25	0.00	-	57.00	-	-	0.00	0.00	0.00	-	81.50	-	40	-	-	1,525	
1,550	9.00	9.00	9.00	9.00	9.00	2	409	0.00	0.00	0.00	-	43.25	-	20	-	80.00	9.00	80.00	80.00	80.00	80.00	6	130	0.00	0.00	0.00	-	97.00	-	20	-	-	1,550
1,575	0.00	0.00	0.00	-	12.75	-	43	0.00	0.00	0.00	-	35.25	-	-	-	0.00	0.00	0.00	-	92.50	-	38	0.00	0.00	0.00	-	114.00	-	-	-	-	1,575	
1,600	0.00	0.00	0.00	-	8.40	-	-	0.00	0.00	0.00	-	28.25	-	50	-	0.00	0.00	0.00	-	113.00	-	-	0.00	0.00	0.00	-	132.00	-	-	-	-	1,600	
1,625	0.00	0.00	0.00	-	5.30	-	100	0.00	0.00	0.00	-	22.50	-	-	-	0.00	0.00	0.00	-	135.00	-	20	0.00	0.00	0.00	-	151.00	-	-	-	-	1,625	
1,650	0.00	0.00	0.00	-	3.20	-	-	0.00	0.00	0.00	-	17.75	-	-	-	0.00	0.00	0.00	-	158.00	-	-	0.00	0.00	0.00	-	171.00	-	-	-	-	1,650	
1,675	0.00	0.00	0.00	-	1.90	-	-	0.00	0.00	0.00	-	13.75	-	-	-	0.00	0.00	0.00	-	181.00	-	-	0.00	0.00	0.00	-	192.00	-	-	-	-	1,675	
1,700	0.00	0.00	0.00	-	1.10	-	100	0.00	0.00	0.00	-	10.75	-	-	-	0.00	0.00	0.00	-	206.00	-	-	0.00	0.00	0.00	-	214.00	-	-	-	-	1,700	
1,725	0.00	0.00	0.00	-	0.62	-	-	0.00	0.00	0.00	-	8.20	-	-	-	0.00	0.00	0.00	-	230.00	-	-	0.00	0.00	0.00	-	237.00	-	-	-	-	1,725	
1,750	-	-	-	-	-	-	-	-	-	-	-	-	-	-	-	-	-	-	-	-	-	-	-	-	-	-	-	-	-	-	-	1,750	
1,775	-	-	-	-	-	-	-	-	-	-	-	-	-	-	-	-	-	-	-	-	-	-	-	-	-	-	-	-	-	-	-	1,775	
1,800	-	-	-	-	-	-	-	-	-	-	-	-	-	-	-	-	-	-	-	-	-	-	-	-	-	-	-	-	-	-	-	1,800	
1,825	-	-	-	-	-	-	-	-	-	-	-	-	-	-	-	-	-	-	-	-	-	-	-	-	-	-	-	-	-	-	-	1,825	
1,850	-	-	-	-	-	-	-	-	-	-	-	-	-	-	-	-	-	-	-	-	-	-	-	-	-	-	-	-	-	-	-	1,850	
1,875	-	-	-	-	-	-	-	-	-	-	-	-	-	-	-	-	-	-	-	-	-	-	-	-	-	-	-	-	-	-	-	1,875	
1,900	-	-	-	-	-	-	-	-	-	-	-	-	-	-	-	-	-	-	-	-	-	-	-	-	-	-	-	-	-	-	-	1,900	
1,925	-	-	-	-	-	-	-	-	-	-	-	-	-	-	-	-	-	-	-	-	-	-	-	-	-	-	-	-	-	-	-	1,925	

FTSE/Athex Large Cap

(Trade Unit: 1 Index Point x 2€ - Exercise Style: European, Cash Settlement)

Exercise Price	Call Options														Put Options																			
	October 2020							November 2020							Other Months		October 2020							November 2020							Other Months		Exercise Price	
	Open price	Price max	Price min	Last price	Closing price	Volume	Open Interest	Open price	Price max	Price min	Last price	Closing price	Volume	Open Interest	Volume	Open Interest	Open price	Price max	Price min	Last price	Closing price	Volume	Open Interest	Open price	Price max	Price min	Last price	Closing price	Volume	Open Interest	Volume	Open Interest		
1,950	-	-	-	-	-	-	-	-	-	-	-	-	-	-	-	-	-	-	-	-	-	-	-	-	-	-	-	-	-	-	-	-		-
1,975	-	-	-	-	-	-	-	-	-	-	-	-	-	-	-	-	-	-	-	-	-	-	-	-	-	-	-	-	-	-	-	-	-	1,975
2,000	-	-	-	-	-	-	-	-	-	-	-	-	-	-	-	-	-	-	-	-	-	-	-	-	-	-	-	-	-	-	-	-	2,000	
2,050	-	-	-	-	-	-	-	-	-	-	-	-	-	-	-	-	-	-	-	-	-	-	-	-	-	-	-	-	-	-	-	-	2,050	
2,100	-	-	-	-	-	-	-	-	-	-	-	-	-	-	-	-	-	-	-	-	-	-	-	-	-	-	-	-	-	-	-	-	2,100	
2,150	-	-	-	-	-	-	-	-	-	-	-	-	-	-	-	-	-	-	-	-	-	-	-	-	-	-	-	-	-	-	-	-	2,150	
2,200	-	-	-	-	-	-	-	-	-	-	-	-	-	-	-	-	-	-	-	-	-	-	-	-	-	-	-	-	-	-	-	-	2,200	
2,250	-	-	-	-	-	-	-	-	-	-	-	-	-	-	-	-	-	-	-	-	-	-	-	-	-	-	-	-	-	-	-	-	2,250	
2,300	-	-	-	-	-	-	-	-	-	-	-	-	-	-	-	-	-	-	-	-	-	-	-	-	-	-	-	-	-	-	-	-	2,300	
2,350	-	-	-	-	-	-	-	-	-	-	-	-	-	-	-	-	-	-	-	-	-	-	-	-	-	-	-	-	-	-	-	-	2,350	
2,400	-	-	-	-	-	-	-	-	-	-	-	-	-	-	-	-	-	-	-	-	-	-	-	-	-	-	-	-	-	-	-	-	2,400	
2,450	-	-	-	-	-	-	-	-	-	-	-	-	-	-	-	-	-	-	-	-	-	-	-	-	-	-	-	-	-	-	-	-	2,450	
2,500	-	-	-	-	-	-	-	-	-	-	-	-	-	-	-	-	-	-	-	-	-	-	-	-	-	-	-	-	-	-	-	-	2,500	
2,550	-	-	-	-	-	-	-	-	-	-	-	-	-	-	-	-	-	-	-	-	-	-	-	-	-	-	-	-	-	-	-	-	2,550	
2,600	-	-	-	-	-	-	-	-	-	-	-	-	-	-	-	-	-	-	-	-	-	-	-	-	-	-	-	-	-	-	-	-	2,600	
Totals:						5	754						0	130	0	0							11	337						2	142	0	0	
Number of Trades:						4							0		0								5						2		0			

ALPHA BANK (CR)

(Contract Size: 100 Securities, Exercise Style: American, Physical Delivery)

Call Options														Put Options																			
October 2020							November 2020							Other Months		October 2020							November 2020							Other Months		Exercise Price	
Open price	Price max	Price min	Last price	Closing price	Volume	Open Interest	Open price	Price max	Price min	Last price	Closing price	Volume	Open Interest	Volume	Open Interest	Open price	Price max	Price min	Last price	Closing price	Volume	Open Interest	Open price	Price max	Price min	Last price	Closing price	Volume	Open Interest	Volume	Open Interest		
0.250	0.000	0.000	0.000	0.267	-	-	0.000	0.000	0.000	0.268	-	-				0.000	0.000	0.000	0.001	-	-				0.000	0.000	0.000	0.001	-	-			0.003
0.300	0.000	0.000	0.000	0.218	-	-	0.000	0.000	0.000	0.218	-	-				0.000	0.000	0.000	0.001	-	-				0.000	0.000	0.000	0.001	-	-			0.003
0.350	0.000	0.000	0.000	0.170	-	-	0.000	0.000	0.000	0.171	-	-				0.000	0.000	0.000	0.003	-	-				0.000	0.000	0.000	0.003	-	-			0.004
0.400	0.000	0.000	0.000	0.126	-	-	0.000	0.000	0.000	0.127	-	-				0.000	0.000	0.000	0.009	-	-				0.000	0.000	0.000	0.009	-	-			0.004
0.450	0.000	0.000	0.000	0.088	-	7	0.000	0.000	0.000	0.090	-	-				0.000	0.000	0.000	0.021	-	-				0.000	0.000	0.000	0.022	-	-			0.005
0.500	0.000	0.000	0.000	0.060	-	-	0.000	0.000	0.000	0.061	-	-				0.000	0.000	0.000	0.042	-	-				0.000	0.000	0.000	0.043	-	-			0.005
0.550	0.000	0.000	0.000	0.038	-	-	0.000	0.000	0.000	0.040	-	-				0.000	0.000	0.000	0.070	-	-				0.000	0.000	0.000	0.071	-	-			0.006
0.600	0.000	0.000	0.000	0.023	-	-	0.000	0.000	0.000	0.025	-	-				0.000	0.000	0.000	0.106	-	-				0.000	0.000	0.000	0.106	-	-			0.006
0.650	0.000	0.000	0.000	0.014	-	-	0.000	0.000	0.000	0.015	-	-				0.000	0.000	0.000	0.146	-	-				0.000	0.000	0.000	0.146	-	-			0.007
0.700	0.000	0.000	0.000	0.008	-	-	0.000	0.000	0.000	0.009	-	-				0.000	0.000	0.000	0.190	-	-				0.000	0.000	0.000	0.190	-	-			0.007
0.750	0.000	0.000	0.000	0.004	-	-	0.000	0.000	0.000	0.005	-	-				0.000	0.000	0.000	0.237	-	-				0.000	0.000	0.000	0.237	-	-			0.008
0.800	0.000	0.000	0.000	0.002	-	-	0.000	0.000	0.000	0.003	-	-				0.000	0.000	0.000	0.285	-	-				0.000	0.000	0.000	0.285	-	-			0.008
0.850	0.000	0.000	0.000	0.001	-	-	0.000	0.000	0.000	0.002	-	-				0.000	0.000	0.000	0.334	-	-				0.000	0.000	0.000	0.334	-	-			0.009
0.900					-	-					-	-										-	-									0.009	
0.950					-	-					-	-										-	-									0.010	
1.000					-	-					-	-										-	-									0.010	
1.100					-	-					-	-										-	-									0.011	
1.200					-	-					-	-										-	-									0.012	
1.300					-	-					-	-										-	-									0.013	
1.400					-	-					-	-										-	-									0.014	
1.500					-	-					-	-										-	-									0.015	
1.600					-	-					-	-										-	-									0.016	
1.700					-	-					-	-										-	-									0.017	
1.800					-	-					-	-										-	-									0.018	
1.900					-	-					-	-										-	-									0.019	
2.000					-	-					-	-										-	-									0.020	
2.200					-	-					-	-										-	-									0.022	
2.400					-	-					-	-										-	-									0.024	
2.600					-	-					-	-										-	-									0.026	
2.800					-	-					-	-										-	-									0.028	
Totals:					0	7						0	0	0	0	0						0	0							0	0	0	0
Number of Trades:					0							0	0	0									0.00							0	0		



NATIONAL BANK (CR)

(Contract Size: 100 Securities, Exercise Style: American, Physical Delivery)

Exercise Price	Call Options														Volume	Open Interest	Put Options														Volume	Open Interest	Exercise Price	
	October 2020						November 2020						Other Months				October 2020						November 2020						Other Months					
	Open price	Price max	Price min	Last price	Closing price	Volume	Open Interest	Open price	Price max	Price min	Last price	Closing price	Volume	Open Interest			Volume	Open Interest	Open price	Price max	Price min	Last price	Closing price	Volume	Open Interest	Open price	Price max	Price min	Last price	Closing price				Volume
0.600						-	-							-	-																			0.006
0.650						-	-							-	-																			0.007
0.700						-	-							-	-																			0.007
0.750						-	-							-	-																			0.008
0.800	0.000	0.000	0.000		0.321	-	-	0.000	0.000	0.000		0.327	-	-		0.000	0.000	0.000		0.001	-	-		0.000	0.000	0.000		0.005	-	-		0.008		
0.850	0.000	0.000	0.000		0.272	-	-	0.000	0.000	0.000		0.282	-	-		0.000	0.000	0.000		0.001	-	-		0.000	0.000	0.000		0.010	-	-		0.009		
0.900	0.000	0.000	0.000		0.225	-	-	0.000	0.000	0.000		0.240	-	-		0.000	0.000	0.000		0.004	-	-		0.000	0.000	0.000		0.017	-	-		0.009		
0.950	0.000	0.000	0.000		0.180	-	-	0.000	0.000	0.000		0.201	-	-		0.000	0.000	0.000		0.009	-	-		0.000	0.000	0.000		0.028	-	-		0.010		
1.000	0.000	0.000	0.000		0.139	-	-	0.000	0.000	0.000		0.165	-	-		0.000	0.000	0.000		0.018	-	-		0.000	0.000	0.000		0.043	-	-		0.010		
1.100	0.000	0.000	0.000		0.075	-	-	0.000	0.000	0.000		0.108	-	-		0.000	0.000	0.000		0.054	-	-		0.000	0.000	0.000		0.085	-	-		0.011		
1.200	0.000	0.000	0.000		0.034	-	-	0.000	0.000	0.000		0.066	-	-		0.000	0.000	0.000		0.113	-	-		0.000	0.000	0.000		0.143	-	-		0.012		
1.300	0.000	0.000	0.000		0.014	-	3	0.000	0.000	0.000		0.039	-	-		0.000	0.000	0.000		0.193	-	-		0.000	0.000	0.000		0.216	-	-		0.013		
1.400	0.000	0.000	0.000		0.005	-	-	0.000	0.000	0.000		0.022	-	-		0.000	0.000	0.000		0.284	-	-		0.000	0.000	0.000		0.299	-	-		0.014		
1.500	0.000	0.000	0.000		0.001	-	-	0.000	0.000	0.000		0.012	-	-		0.000	0.000	0.000		0.381	-	-		0.000	0.000	0.000		0.389	-	-		0.015		
1.600	0.000	0.000	0.000		0.001	-	-	0.000	0.000	0.000		0.006	-	-		0.000	0.000	0.000		0.480	-	-		0.000	0.000	0.000		0.484	-	-		0.016		
1.700	0.000	0.000	0.000		0.001	-	-	0.000	0.000	0.000		0.003	-	-		0.000	0.000	0.000		0.580	-	-		0.000	0.000	0.000		0.581	-	-		0.017		
1.800	0.000	0.000	0.000		0.001	-	-							-	-					0.680	-	-										0.018		
1.900						-	-							-	-																		0.019	
2.000						-	-							-	-																		0.020	
2.200						-	-							-	-																		0.022	
2.400						-	-							-	-																		0.024	
2.600						-	-							-	-																		0.026	
2.800						-	-							-	-																		0.028	
3.000						-	-							-	-																		0.030	
3.200						-	-							-	-																		0.032	
3.400						-	-							-	-																		0.034	
3.600						-	-							-	-																		0.036	
3.800						-	-							-	-																		0.038	
4.000						-	-							-	-																		0.040	
Totals:						0	3						0	0	0	0					0	0						0	0	0	450			
Number of Trades:						0							0		0						0.00							0		0				

OPAP (CR)

(Contract Size: 100 Securities, Exercise Style: American, Physical Delivery)

Exercise Price	Call Options														Put Options																		
	October 2020						November 2020						Other Months		October 2020						November 2020						Other Months		Exercise Price				
	Open price	Price max	Price min	Last price	Closing price	Volume	Open Interest	Open price	Price max	Price min	Last price	Closing price	Volume	Open Interest	Volume	Open Interest	Open price	Price max	Price min	Last price	Closing price	Volume	Open Interest	Open price	Price max	Price min	Last price	Closing price		Volume	Open Interest	Volume	Open Interest
4.000						-	-							-	-								-	-									
4.400						-	-							-	-								-	-									0.044
4.800						-	-							-	-								-	-									0.048
5.200						-	-							-	-								-	-									0.052
5.600	0.000	0.000	0.000		2.40	-	-	0.000	0.000	0.000		2.41	-	-		0.000	0.000	0.000		0.001	-	-		0.000	0.000	0.000		0.001	-	-		0.056	
6.000	0.000	0.000	0.000		2.00	-	-	0.000	0.000	0.000		2.01	-	-		0.000	0.000	0.000		0.001	-	-		0.000	0.000	0.000		0.002	-	-		0.060	
6.400	0.000	0.000	0.000		1.60	-	-	0.000	0.000	0.000		1.62	-	-		0.000	0.000	0.000		0.001	-	-		0.000	0.000	0.000		0.010	-	-		0.064	
6.800	0.000	0.000	0.000		1.20	-	-	0.000	0.000	0.000		1.24	-	-		0.000	0.000	0.000		0.001	-	-		0.000	0.000	0.000		0.035	-	-		0.068	
7.200	0.000	0.000	0.000		0.810	-	-	0.000	0.000	0.000		0.903	-	-		0.000	0.000	0.000		0.012	-	-		0.000	0.000	0.000		0.092	-	-		0.072	
7.600	0.000	0.000	0.000		0.464	-	-	0.000	0.000	0.000		0.616	-	-		0.000	0.000	0.000		0.067	-	16		0.000	0.000	0.000		0.204	-	-		0.076	
8.000	0.271	0.272	0.271	0.272	0.272	11	10	0.000	0.000	0.000		0.387	-	-		0.000	0.000	0.000		0.213	-	51		0.000	0.000	0.000		0.375	-	-		0.080	
8.400	0.117	0.117	0.090	0.090	0.090	8	26	0.000	0.000	0.000		0.230	-	22		0.000	0.000	0.000		0.477	-	5		0.000	0.000	0.000		0.618	-	-		0.084	
8.800	0.015	0.015	0.015	0.015	0.015	5	22	0.000	0.000	0.000		0.125	-	27		0.000	0.000	0.000		0.823	-	-		0.000	0.000	0.000		0.914	-	-		0.088	
9.200	0.000	0.000	0.000		0.004	-	5	0.000	0.000	0.000		0.063	-	-		0.000	0.000	0.000		1.21	-	-		0.000	0.000	0.000		1.25	-	-		0.092	
9.600	0.000	0.000	0.000		0.001	-	-	0.000	0.000	0.000		0.030	-	-		0.000	0.000	0.000		1.61	-	-		0.000	0.000	0.000		1.62	-	-		0.096	
10.000	0.000	0.000	0.000		0.022	-	-	0.000	0.000	0.000		0.013	-	-		0.000	0.000	0.000		2.01	-	-		0.000	0.000	0.000		2.01	-	-		0.100	
11.000	0.000	0.000	0.000		0.002	-	-	0.000	0.000	0.000		0.001	-	-		0.000	0.000	0.000		3.01	-	-		0.000	0.000	0.000		3.01	-	-		0.110	
12.000	0.000	0.000	0.000		0.001	-	-						-	-		0.000	0.000	0.000		4.01	-	-							-	-		0.120	
13.000	0.000	0.000	0.000		0.001	-	-						-	-		0.000	0.000	0.000		5.01	-	-							-	-		0.130	
14.000						-	-						-	-								-	-						-	-		0.140	
15.000						-	-						-	-								-	-						-	-		0.150	
16.000						-	-						-	-								-	-						-	-		0.160	
17.000						-	-						-	-								-	-						-	-		0.170	
Totals:						24	63						0	49	0	0						24	72						0	21	0	0	
Number of Trades:							5							0	0							0.00							0	0			

OTE (CR)

(Contract Size: 100 Securities, Exercise Style: American, Physical Delivery)

Exercise Price	Call Options														Put Options														Exercise Price											
	October 2020						November 2020						Other Months		October 2020						November 2020						Other Months													
	Open price	Price max	Price min	Last price	Closing price	Volume	Open Interest	Open price	Price max	Price min	Last price	Closing price	Volume	Open Interest	Volume	Open Interest	Open price	Price max	Price min	Last price	Closing price	Volume	Open Interest	Open price	Price max	Price min	Last price	Closing price		Volume	Open Interest	Volume	Open Interest							
7.200						-	-							-	-							-	-							-	-							-	-	0.072
7.600						-	-							-	-							-	-							-	-							-	-	0.076
8.000						-	-							-	-							-	-							-	-							-	-	0.080
8.400						-	-							-	-							-	-							-	-							-	-	0.084
8.800	0.000	0.000	0.000		4.01	-	-							-	-	0.000	0.000	0.000		0.001	-	-							-	-							-	-	0.088	
9.200	0.000	0.000	0.000		3.61	-	-	0.000	0.000	0.000		3.63	-	-						0.001	-	-	0.000	0.000	0.000		0.001	-	-							-	-	0.092		
9.600	0.000	0.000	0.000		3.21	-	-	0.000	0.000	0.000		3.23	-	-						0.001	-	-	0.000	0.000	0.000		0.003	-	-							-	-	0.096		
10.000	0.000	0.000	0.000		2.81	-	-	0.000	0.000	0.000		2.84	-	-						0.001	-	-	0.000	0.000	0.000		0.008	-	-							-	-	0.100		
11.000	0.000	0.000	0.000		1.81	-	-	0.000	0.000	0.000		1.90	-	-						0.002	-	-	0.000	0.000	0.000		0.063	-	-							-	-	0.110		
12.000	0.000	0.000	0.000		0.876	-	-	0.000	0.000	0.000		1.09	-	-			0.076	0.103	0.076	0.103	0.103	22	11	0.254	0.282	0.254	0.282	0.282	10	26							-	-	0.120	
13.000	0.000	0.000	0.000		0.245	-	-	0.000	0.000	0.000		0.532	-	-			0.466	0.466	0.466	0.466	0.466	3	37	0.000	0.000	0.000		0.697	-	-							-	-	0.130	
14.000	0.000	0.000	0.000		0.032	-	26	0.144	0.144	0.144	0.144	0.144	5	30			0.000	0.000	0.000		1.22	-	-	0.000	0.000	0.000		1.38	-	-							-	-	0.140	
15.000	0.000	0.000	0.000		0.002	-	40	0.044	0.044	0.044	0.044	0.044	5	-			0.000	0.000	0.000		2.20	-	-	0.000	0.000	0.000		2.24	-	-							-	-	0.150	
16.000	0.000	0.000	0.000		0.003	-	-	0.000	0.000	0.000		0.020	-	-			0.000	0.000	0.000		3.20	-	-	0.000	0.000	0.000		3.20	-	-							-	-	0.160	
17.000	0.000	0.000	0.000		0.002	-	-	0.000	0.000	0.000		0.005	-	-			0.000	0.000	0.000		4.20	-	-	0.000	0.000	0.000		4.20	-	-							-	-	0.170	
18.000	0.000	0.000	0.000		0.001	-	-	0.000	0.000	0.000		0.001	-	-			0.000	0.000	0.000		5.20	-	-	0.000	0.000	0.000		5.20	-	-							-	-	0.180	
19.000	0.000	0.000	0.000		0.001	-	-	0.000	0.000	0.000		0.001	-	-			0.000	0.000	0.000		6.20	-	-	0.000	0.000	0.000		6.20	-	-							-	-	0.190	
Totals:						0	66						10	30	0	0						0	48						10	26	0	0								
Number of Trades:						0							2		0							3.00							2		0									

PIRAEUS BANK (CR)

(Contract Size: 100 Securities, Exercise Style: American, Physical Delivery)

Call Options																Put Options																	
October 2020								November 2020								Other Months		October 2020						November 2020				Other Months		Exercise Price			
Open price	Price max	Price min	Last price	Closing price	Volume	Open Interest		Open price	Price max	Price min	Last price	Closing price	Volume	Open Interest	Volume	Open Interest	Open price	Price max	Price min	Last price	Closing price	Volume	Open Interest	Open price	Price max	Price min	Last price	Closing price	Volume		Open Interest	Volume	Open Interest
0.700					-	-								-	-																		0.007
0.750					-	-								-	-																		0.008
0.800	0.000	0.000	0.000	0.281	-	-		0.000	0.000	0.000		0.288	-	-			0.000	0.000	0.000		0.001	-	-		0.000	0.000	0.000	0.006	-	-		0.008	
0.850	0.000	0.000	0.000	0.233	-	-		0.000	0.000	0.000		0.244	-	-			0.000	0.000	0.000		0.002	-	-		0.000	0.000	0.000	0.012	-	-		0.009	
0.900	0.000	0.000	0.000	0.186	-	-		0.000	0.000	0.000		0.203	-	-			0.000	0.000	0.000		0.005	-	-		0.000	0.000	0.000	0.021	-	-		0.009	
0.950	0.000	0.000	0.000	0.143	-	-		0.000	0.000	0.000		0.167	-	-			0.000	0.000	0.000		0.013	-	-		0.000	0.000	0.000	0.034	-	-		0.010	
1.000	0.000	0.000	0.000	0.105	-	-		0.000	0.000	0.000		0.134	-	-			0.000	0.000	0.000		0.024	-	-		0.000	0.000	0.000	0.051	-	-		0.010	
1.100	0.000	0.000	0.000	0.050	-	-		0.000	0.000	0.000		0.083	-	-			0.075	0.075	0.075	0.075	0.075	20	-		0.000	0.000	0.000	0.100	-	-		0.011	
1.200	0.000	0.000	0.000	0.020	-	-		0.000	0.000	0.000		0.048	-	-			0.000	0.000	0.000		0.139	-	-		0.000	0.000	0.000	0.164	-	-		0.012	
1.300	0.000	0.000	0.000	0.006	-	-		0.000	0.000	0.000		0.026	-	-			0.000	0.000	0.000		0.225	-	-		0.000	0.000	0.000	0.243	-	-		0.013	
1.400	0.000	0.000	0.000	0.002	-	-		0.000	0.000	0.000		0.014	-	-			0.000	0.000	0.000		0.321	-	-		0.000	0.000	0.000	0.331	-	-		0.014	
1.500	0.000	0.000	0.000	0.001	-	-		0.000	0.000	0.000		0.007	-	-			0.000	0.000	0.000		0.420	-	-		0.000	0.000	0.000	0.424	-	-		0.015	
1.600	0.000	0.000	0.000	0.001	-	-		0.000	0.000	0.000		0.003	-	-			0.000	0.000	0.000		0.520	-	-		0.000	0.000	0.000	0.521	-	-		0.016	
1.700	0.000	0.000	0.000	0.001	-	-		0.000	0.000	0.000		0.001	-	-			0.000	0.000	0.000		0.620	-	-		0.000	0.000	0.000	0.620	-	-		0.017	
1.800	0.000	0.000	0.000	0.001	-	-		0.000	0.000	0.000		0.001	-	-			0.000	0.000	0.000		0.720	-	-		0.000	0.000	0.000	0.720	-	-		0.018	
1.900					-	-							-	-																		0.019	
2.000					-	-							-	-																		0.020	
2.200					-	-							-	-																		0.022	
2.400					-	-							-	-																		0.024	
2.600					-	-							-	-																		0.026	
2.800					-	-							-	-																		0.028	
3.000					-	-							-	-																		0.030	
3.200					-	-							-	-																		0.032	
3.400					-	-							-	-																		0.034	
3.600					-	-							-	-																		0.036	
3.800					-	-							-	-																		0.038	
4.000					-	-							-	-																		0.040	
4.400					-	-							-	-																		0.044	
4.800					-	-							-	-																		0.048	
Totals:					0	0						0	0	0	0		0	0			0	0						0	0	0	0		
Number of Trades:					0							0		0			1.00											0		0			

PPC (CR)

(Contract Size: 100 Securities, Exercise Style: American, Physical Delivery)

Call Options															Put Options																		
October 2020							November 2020							Other Months	October 2020					November 2020					Other Months		Exercise Price						
Exercise Price	Open price	Price max	Price min	Last price	Closing price	Volume	Open Interest	Open price	Price max	Price min	Last price	Closing price	Volume	Open Interest	Volume	Open Interest	Open price	Price max	Price min	Last price	Closing price	Volume	Open Interest	Open price	Price max	Price min		Last price	Closing price	Volume	Open Interest	Volume	Open Interest
1.000						-	-																										0.010
1.100						-	-																										0.011
1.200						-	-																										0.012
1.300						-	-																										0.013
1.400						-	-																										0.014
1.500						-	-																										0.015
1.600						-	-																										0.016
1.700						-	-																										0.017
1.800						-	-																										0.018
1.900						-	-																										0.019
2.000						-	-																										0.020
2.200						-	-																										0.022
2.400						-	-																										0.024
2.600						-	-																										0.026
2.800	0.000	0.000	0.000		2.29	-	-	0.000	0.000	0.000		2.30	-	-			0.000	0.000	0.000		0.001	-	-		0.000	0.000	0.000		0.001	-	-		0.028
3.000	0.000	0.000	0.000		2.09	-	-	0.000	0.000	0.000		2.10	-	-			0.000	0.000	0.000		0.001	-	-		0.000	0.000	0.000		0.001	-	-		0.030
3.200	0.000	0.000	0.000		1.89	-	-	0.000	0.000	0.000		1.90	-	-			0.000	0.000	0.000		0.001	-	-		0.000	0.000	0.000		0.001	-	-		0.032
3.400	0.000	0.000	0.000		1.69	-	-	0.000	0.000	0.000		1.70	-	-			0.000	0.000	0.000		0.002	-	-		0.000	0.000	0.000		0.001	-	-		0.034
3.600	0.000	0.000	0.000		1.49	-	-	0.000	0.000	0.000		1.50	-	-			0.000	0.000	0.000		0.001	-	-		0.000	0.000	0.000		0.003	-	-		0.036
3.800	0.000	0.000	0.000		1.29	-	-	0.000	0.000	0.000		1.31	-	-			0.000	0.000	0.000		0.001	-	-		0.000	0.000	0.000		0.008	-	-		0.038
4.000	0.000	0.000	0.000		1.09	-	-	0.000	0.000	0.000		1.12	-	-			0.000	0.000	0.000		0.001	-	30		0.000	0.000	0.000		0.018	-	-		0.040
4.400	0.000	0.000	0.000		0.701	-	11	0.000	0.000	0.000		0.771	-	-			0.000	0.000	0.000		0.007	-	30		0.000	0.000	0.000		0.068	-	-		0.044
4.800	0.000	0.000	0.000		0.357	-	-	0.000	0.000	0.000		0.485	-	10			0.000	0.000	0.000		0.062	-	-		0.000	0.000	0.000		0.181	-	-		0.048
5.200	0.000	0.000	0.000		0.129	-	23	0.000	0.000	0.000		0.277	-	46			0.000	0.000	0.000		0.234	-	-		0.000	0.000	0.000		0.373	-	-		0.052
5.600	0.000	0.000	0.000		0.031	-	-	0.120	0.120	0.120	0.120	0.120	5	10			0.000	0.000	0.000		0.537	-	-		0.000	0.000	0.000		0.639	-	-		0.056
6.000	0.000	0.000	0.000		0.005	-	-	0.000	0.000	0.000		0.068	-	-			0.000	0.000	0.000		0.912	-	-		0.000	0.000	0.000		0.965	-	-		0.060
6.400	0.000	0.000	0.000		0.001	-	-	0.000	0.000	0.000		0.029	-	-			0.000	0.000	0.000		1.31	-	-		0.000	0.000	0.000		1.33	-	-		0.064
6.800	0.000	0.000	0.000		0.002	-	-	0.000	0.000	0.000		0.012	-	-			0.000	0.000	0.000		1.71	-	-		0.000	0.000	0.000		1.71	-	-		0.068
7.200	0.000	0.000	0.000		0.001	-	-	0.000	0.000	0.000		0.004	-	-			0.000	0.000	0.000		2.11	-	-		0.000	0.000	0.000		2.11	-	-		0.072
Totals:						0	34						5	66	0	0						0	60						0	72	0	0	
Number of Trades:						0							1		0							0.00							0		0		

Lending Products	Underlying Title	Open Interest[5]	Multilateral Transactions[1]				Bilateral Transactions[2]		Stock Borrowing through OTC (volume)[3]	
			Volume(Offered)	Average Weighted	Transactions volume	Average Weighted	Transactions Volume	Average Weighted	Transactions Volume	Transactions Volume
ADMIEBOR	ADMIE (IPTO) HOLDING S.A. (CR)	1,476	---	---	---	---	---	---	122,050	
AEGBOR	AEGEAN AIRLINES (CR)	2,729	---	---	---	---	---	---	7,739	
ALPHABOR	ALPHA BANK (CR)	4,749	---	---	---	---	---	---	41,235,533	
ALMYBOR	ALUMIL (CR)	---	---	---	---	---	---	---	---	
TATTBOR	ATTICA BANK S.A. (CR)	13,603	---	---	---	---	---	---	370	
EEEBOR	CC HBC AG (CR)	---	---	---	---	---	---	---	70,546	
CENERBOR	CENERGY HOLDINGS (CB)	---	---	---	---	---	---	---	---	
ELLAKTORBOR	ELLAKTOR (CR)	20,000	---	---	---	---	---	---	76,730	
EUROBBOR	EUROBANK HOLDINGS (CR)	54,457	---	---	---	---	---	---	54,253,388	
EYDAPBOR	EYDAP S.A. (CR)	940	---	---	---	---	---	---	247,781	
FFGRPBOR	FOLLI FOLLIE (CR)	---	---	---	---	---	---	---	1,120,847	
FOYRKBOR	FOURLIS (CR)	998	---	---	---	---	---	---	23,892	
GEKTERNABOR	GEK TERNA (CR)	---	---	---	---	---	---	---	30,739	
SARBOR	GR. SARANTIS S.A. (CR)	---	---	---	---	---	---	---	25,839	
EXAEBOR	HELLENIC EXCHANGES-A.S.E. (CR)	1,138	---	---	---	---	---	---	227,406	
ELPEBOR	HELLENIC PETROLEUM (CR)	---	---	---	---	---	---	---	141,483	
INTRKBOR	INTRACOM HOLDINGS (CR)	8,000	---	---	---	---	---	---	---	
BELABOR	JUMBO SA (CR)	2,700	---	---	---	---	---	---	95,698	
LAMDABOR	LAMDA DEVELOPMENT SA (CR)	---	---	---	---	---	---	---	4,603	
MIGBOR	MARFIN INVESTMENT GROUP (CR)	60,000	---	---	---	---	---	---	794,474	
MOHBOR	MOTOR OIL (CR)	1,000	---	---	---	---	---	---	495,058	
MYTILBOR	MYTILINEOS (CR)	1,500	---	---	---	---	---	---	140,559	
ETEBOR	NATIONAL BANK (CR)	30,408	---	---	---	---	---	---	9,267,674	
OPAPBOR	OPAP (CR)	30,332	---	---	---	---	---	---	1,320,317	
HTOBOR	OTE (CR)	9,956	---	---	---	---	---	---	565,245	
PPABOR	P.P.A. S.A. (CR)	335	---	---	---	---	---	---	10,401	
TPEIRBOR	PIRAEUS BANK (CR)	11,634	---	---	---	---	---	---	15,380,770	
PLAISBOR	PLAISIO COMPUTERS SA (CR)	---	---	---	---	---	---	---	4,000	
PPCBOR	PPC (CR)	15,618	---	---	---	---	---	---	5,142,755	
QUALBOR	QUALITY & RELIABILITY SA (CR)	---	---	---	---	---	---	---	---	
TENERGYBOR	TERNA ENERGY (CR)	11,879	---	---	---	---	---	---	38,186	

## Stock Lending Notes

[1] - Multilateral contracts Lending or Borrowing as per Methods 8-1, 8-2 and 8-3-3 (According to ATHEX BoD Resolution No.17)

[2] - Bilateral Contracts Lending or Borrowing as per Methods 8-3-1 and 8-3-2 (According to ATHEX BoD Resolution No.20 )

[3] - The information concerning OTC Stock Borrowing Transactions is based on the statements of the Dematerialised Securities System (DSS) operators involved and refers to volumes that have been registered up until the previous working day.

[4] - Average Price (Volume weighted)

[5] - The Data concerning Open Interest before the start of trading session

Lending Products	Underlying Title	Open Interest[5]	Multilateral Transactions[1]				Bilateral Transactions[2]		Stock Borrowing through OTC (volume)[3]	
			Volume(Offered)	Average Weighted	Transactions volume	Average Weighted	Transactions Volume	Average Weighted	Transactions Volume	
TITCBOR	TITAN CEMENT (CB)	---	---	---	---	---	---	---	282,877	
VIOBOR	VIOHALCO SA/NV (CB)	841	---	---	---	---	---	---	---	

## Stock Lending Notes

[1] - Multilateral contracts Lending or Borrowing as per Methods 8-1, 8-2 and 8-3-3 (According to ATHEX BoD Resolution No.17)

[2] - Bilateral Contracts Lending or Borrowing as per Methods 8-3-1 and 8-3-2 (According to ATHEX BoD Resolution No.20 )

[3] - The information concerning OTC Stock Borrowing Transactions is based on the statements of the Dematerialised Securities System (DSS) operators involved and refers to volumes that have been registered up until the previous working day.

[4] - Average Price (Volume weighted)

[5] - The Data concerning Open Interest before the start of trading session

## Sectors codification for listed companies

12003 -	ETF	10101010	Computer Services
10101015	Software	10102030	Computer Hardware
15101010	Telecommunications Equipment	15102015	Telecommunications Services
20101010	Health Care Facilities	20101025	Health Care Services
20102010	Medical Equipment	20103015	Pharmaceuticals
30101010	Banks	30202000	Diversified Financial Services
30202010	Asset Managers & Custodians	30202015	Investment Services
30302010	Full Line Insurance	30302015	Insurance Brokers
35101010	Real Estate Holding and Development	35101015	Real Estate Services
35102000	Diversified REITs	35102030	Office REITs
40201040	Rental & Leasing Services: Consumer	40202010	Home Construction
40202015	Household Furnishings	40202020	Household Appliance
40203040	Electronic Entertainment	40203045	Toys
40204020	Clothing & Accessories	40301010	Entertainment
40301030	Publishing	40301035	Radio & TV Broadcasters
40401010	Diversified Retailers	40401020	Apparel Retailers
40401025	Home Improvement Retailers	40401030	Specialty Retailers
40501010	Airlines	40501015	Travel & Tourism
40501020	Casinos & Gambling	40501025	Hotels & Motels
45101015	Distillers & Vintners	45101020	Soft Drinks
45102010	Farming Fishing Ranching & Plantations	45102020	Food Products
45103010	Tobacco	45201010	Food Retailers & Wholesalers
45201020	Personal Products	50101010	Construction
50101030	Cement	50101035	Building Materials: Other
50202010	Electrical Components	50203000	Diversified Industrials
50203015	Plastics	50203030	Containers & Packaging
50204000	Machinery: Industrial	50204020	Machinery: Construction & Handling
50205010	Industrial Suppliers	50205020	Back Office Support HR & Consulting
50205030	Forms & Bulk Printing Services	50206015	Commercial Vehicles & Parts
50206030	Marine Transportation	50206060	Transportation Services
55101000	Diversified Materials	55101020	Textile Products
55102000	General Mining	55102010	Iron & Steel
55102015	Metal Fabricating	55102035	Aluminum
60101000	Integrated Oil & Gas	60101020	Oil Refining and Marketing
65101010	Alternative Electricity	65101015	Conventional Electricity
65102030	Water		





**ATHEX**  
Athens Stock Exchange

Λεωφ. Αθηνών 110 104 42 Αθήνα  
110, Athinon Ave. GR 104 42 Athens  
tel. (+30)210-33.66.800, fax (+30)210-33.66.101  
[www.athexgroup.gr](http://www.athexgroup.gr)