

20

**Ημερήσιο Δελτίο  
Συναλλακτικής Δραστηριότητας**

Daily Official List  
of Trading Activity

Monday, 24 August, 2020

Year: 141 Trading Day No: 159



**ATHEXGROUP**  
Athens Exchange Group

**Disclaimer:**

Hellenic Exchanges-Athens Stock Exchange S.A endeavours to ensure that the data and other material ("Information") presented on the Daily Official List are accurate and complete, but it is not liable for any errors or omissions of data or /and for the accuracy, credibility, updating and completeness of the aforesaid information nor it has any liability arising directly or indirectly from the use of the above Information.

The Company is not liable for the accuracy of the data included in listed companies' announcements. Only the sender of such an announcement is fully and solely liable for any infringement of third party's rights from the content of such announcement. All contents of the Daily Official List are provided only for information purposes and do not constitute investment advice or solicitation to invest in securities or other products listed for trading on the Exchange.

You acknowledge and agree that the Company is the owner of any property rights related to any Information appearing on the Daily Official List including intellectual property rights copyright, trademarks, etc.

The above data are a property of the Hellenic Exchanges-Athens Exchange and are copyright protected. Users are forbidden to reproduce, modify, copy, sale, transmit or redistribute, by all reproduction means and methods, part or the whole of the above data, without reference to their source.

The commercial exploitation of these data is, also, forbidden by third parties. Hellenic Exchanges-Athens Exchange does not carry any responsibility, direct or indirect, derived from usage or accidental alteration of the above data when used by third parties.

---

**Hellenic Exchanges – Athens Stock Exchange S.A.**

110 Athinon Ave., 10442 Athens, Tel: (210) 33.66.800, Fax: (210) 32.13.938

[www.athexgroup.gr](http://www.athexgroup.gr)

---

**Thessalonica Stock Exchange Center (T.S.E.C)**

16-18 Katouni Str., Thessalonica 546 25 Tel: (2310) 567.667, Fax: (2310) 530.545

**Athex Members Guarantee Fund**

14-16 Fidiou Str., Athens 106 78, Tel: (210) 33.04.682, Fax: (210) 33.04.155

**Hellenic Republic Capital Market Commission**

1 Kolokotroni Str. & 1 Stadiou Str., Athens 10562 Tel: (210) 33.77.100 Fax: (210) 33.77.173

---

**Table of Contents**

---

**Section 1: Statistical Figures of Securities, Derivatives and Lending**

Summary of Markets

Athex Indices

Analytic Figures for Athex Market's Boards and Categories

Trading Details by Athex Sectors and Financial Instruments (ETFs)

Top 10 best &amp; worst performing Shares

Derivatives Summary

**Section 2: Analytic Figures of Shares Transactions**

Analytic Figures of Shares Transactions

Shares' Notes

**Section 3: Figures of Securities Transactions**

Securities Blocks Details

Shares Rights Details

Stock Borrowing

Securities Forced Sales

Forced Sales Registered Shares

Exchange Traded Funds (ETFs) Characteristics

**Section 5: Bonds traded in Fixed Income Assets Market**

Convertible Corporate Bonds - Regulated Market

Non Convertible Corporate Bonds - Regulated Market

Government Bonds

Treasury Bills &amp; Zero Coupon Government Bonds

Government Bonds Traded with the Open Outcry Method

State Banks Bonds

**Section 6: Additional Infos**

Athex &amp; ATHEXClear Members List

List of Stocks under Market Making operations

**Section 7: Derivatives Market Analytic Figures**

Index Futures

Stock Futures

Index Options

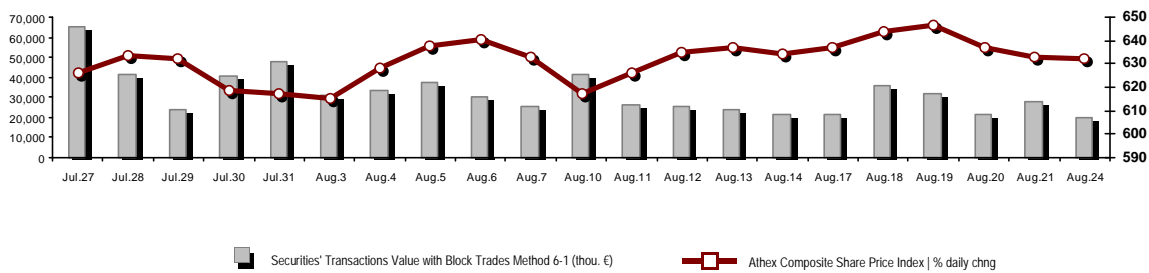
Stock Options

Stock Lending Analytic Figures

**Appendix A: Sectors codification for listed companies**

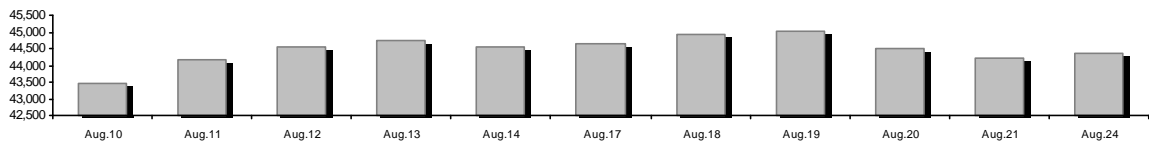
## Summary of Markets

Athex Composite Share Price Index vs Shares and Derivatives Transactions Value

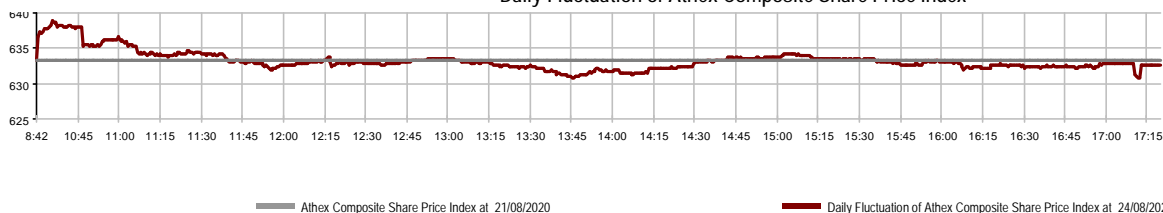


Athex Capitalisation (mill. €) **:	44,370.14		Derivatives Total Open Interest	270,869
Daily change: mill. €   %	143.67	0.32%	in Index Futures   % daily chng	3,161 -21.47%
Yearly Avg Capitalisation: mill. €   % chng prev year Avg	48,022.17	-12.34%	in Stock Futures   % daily chng	266,054 -0.46%
Athex Composite Share Price Index   % daily chng	632.56	-0.11%	in Index Options   % daily chng	865 -50.09%
Athex Composite Share Price Index Capitalisation (mill. €)	39,118.20		in Stock Options   % daily chng	789 -41.08%
Daily change (mill. €)	114.13			
Securities' Transactions Value with Block Trades Method 6-1 (t)	19,918.30		Derivatives Contracts Volume:	10,876
Daily change: %	-7,929.25	-28.47%	Daily change: pieces   %	-7,938 -42.19%
YtD Avg Trans. Value: thou. €   % chng prev year Avg	66,015.85	0.32%	YtD Avg Derivatives Contracts % chng prev year Avg	36,187 -13.62%
Blocks Transactions Value of Method 6-1 (thou. €)	913.63		Derivatives Trades Number:	884
Blocks Transactions Value of Method 6-2 & 6-3 (thou. €)	0.00		Daily change: number   %	-474 -34.90%
Bonds Transactions Value (thou.€)	307.80		YtD Avg Trades number % chng prev year Avg	2,622 -7.98%
Securities' Transactions Volume with Block Trades Method 6-1 (th)	11,683.06		Lending Total Open Interest	277,626
Daily change: thou. pieces   %	-6,945.88	-37.29%	Daily change: pieces   %	0 0.00%
YtD Avg Volume: % chng prev year Avg	43,352.38	36.55%	Lending Volume (Multilateral/Bilateral)	1,149
Blocks Transactions Volume of Method 6-1 (thou. Pieces)	67.18		Daily change: pieces   %	1,149
Blocks Transactions Volume of Method 6-2 & 6-3 (thou. Pieces)	0.00		Multilateral Lending	949
Bonds Transactions Volume	306,000		Bilateral Lending	200
Securities' Trades Number with Block Trades Method 6-1	14,439		Lending Trades Number:	5
Daily change: number   %	-2,776	-16.13%	Daily change: %	5
YtD Avg Trades number % chng prev year Avg	33,014	21.61%	Multilateral Lending Trades Number	4
Number of Blocks Method 6-1	1		Bilateral Lending Trades Number	1
Number of Blocks Method 6-2 & 6-3	0			
Number of Bonds Transactions	33			

Athex Capitalisation (mill. €) \*\*



Daily Fluctuation of Athex Composite Share Price Index



## Athex Indices

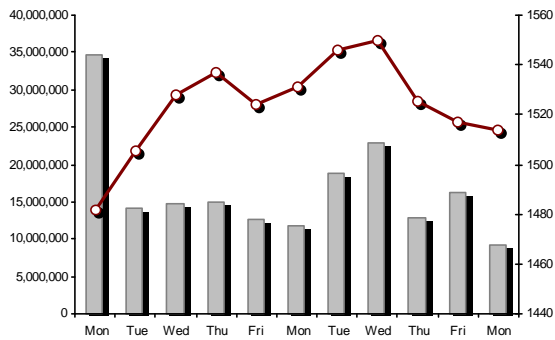
Index name	24/08/2020	21/08/2020	pts.	%	Min	Max	Year min	Year max	Year change
Athex Composite Share Price Index	632.56 €	633.27	-0.71	-0.11%	630.83	638.90	469.55	949.20	-30.99% €
FTSE/Athex Large Cap	1,513.72 €	1,516.74	-3.02	-0.20%	1,509.54	1,533.19	1,135.79	2,371.26	-34.13% €
FTSE/Athex Mid Cap Index	833.63 €	836.42	-2.79	-0.33%	832.22	841.10	659.09	1,298.86	-30.25% €
FTSE/ATHEX-CSE Banking Index	246.50 €	248.65	-2.15	-0.86%	246.30	251.93	199.24	673.55	-63.21% €
FTSE/ATHEX High Dividend Yield Index	2,312.98 €	2,317.64	-4.66	-0.20%	2,312.98	2,330.47	1,730.40	3,015.23	-21.37% €
FTSE/ATHEX Global Traders Index Plus	1,726.43 €	1,734.39	-7.96	-0.46%	1,726.43	1,748.11	1,269.53	2,435.50	-25.54% €
FTSE/ATHEX Mid & Small Cap Factor-Weighted Ind	2,452.54 #	2,449.79	2.75	0.11%	2,443.73	2,455.86	2,028.59	3,205.70	-17.58% €
ATHEX Select Index Plus	2,328.67 €	2,340.09	-11.42	-0.49%	2,322.08	2,348.52	1,698.34	3,182.42	-22.32% €
ATHEX Select Index	2,326.58 €	2,343.29	-16.71	-0.71%	2,326.41	2,352.54	1,734.15	3,581.16	-28.92% €
FTSE/Athex Market Index	383.97 #	382.97	1.00	0.26%	381.42	387.72	282.92	587.56	-32.50% €
FTSE Med Index	3,904.79 #	3,892.54	12.26	0.31%			3,062.99	5,342.28	-21.57% €
Athex Composite Index Total Return Index	1,061.81 #	1,061.77	0.04	0.00%	1,058.91	1,072.44	770.25	1,557.05	-29.00% €
FTSE/Athex Large Cap Total Return	2,317.64 €	2,322.27	-4.63	-0.20%			1,760.89	3,542.27	-32.10% €
FTSE/Athex Mid Cap Total Return	1,041.03 €	1,044.52	-3.49	-0.33%			818.92	1,582.98	-28.54% €
FTSE/ATHEX-CSE Banking Total Return Index	215.90 €	217.78	-1.88	-0.86%			176.97	588.56	-63.20% €
Hellenic Mid & Small Cap Index	949.33 €	954.39	-5.06	-0.53%	949.28	957.82	701.19	1,312.90	-24.27% €
FTSE/Athex Banks	325.69 €	328.52	-2.83	-0.86%	325.42	332.85	263.25	889.92	-63.21% €
FTSE/Athex Insurance	1,419.11 ~	1,419.11	0.00	0.00%	1,395.19	1,447.01	1,076.29	2,088.80	-29.92% €
FTSE/Athex Financial Services	622.48 €	626.07	-3.59	-0.57%	620.91	630.99	548.44	1,123.81	-37.56% €
FTSE/Athex Industrial Goods & Services	1,963.18 €	1,970.83	-7.65	-0.39%	1,963.18	1,985.11	1,302.84	2,712.84	-23.36% €
FTSE/Athex Retail	48.85 €	48.99	-0.14	-0.29%	48.63	49.05	38.18	75.77	-29.85% €
FTSE/ATHEX Real Estate	3,882.53 #	3,880.47	2.06	0.05%	3,869.49	3,921.28	2,945.19	5,826.74	-28.96% €
FTSE/Athex Consumer Goods & Services	7,877.12 €	7,982.27	-105.15	-1.32%	7,877.12	8,160.06	5,596.91	10,280.00	-19.70% €
FTSE/Athex Food & Beverage	8,653.36 #	8,434.19	219.17	2.60%	8,320.48	8,653.36	5,768.28	13,004.12	-23.18% €
FTSE/Athex Basic Resources	3,861.60 €	3,908.66	-47.06	-1.20%	3,855.46	3,947.12	2,713.19	7,435.44	-40.20% €
FTSE/Athex Construction & Materials	2,091.44 €	2,108.77	-17.33	-0.82%	2,087.34	2,128.99	1,403.78	3,344.96	-32.17% €
FTSE/Athex Energy	2,884.22 #	2,867.59	16.63	0.58%	2,857.35	2,907.96	2,268.39	5,154.35	-42.87% €
FTSE/Athex Travel & Leisure	1,217.07 €	1,231.56	-14.49	-1.18%	1,217.07	1,248.06	904.20	2,084.49	-37.25% €
FTSE/Athex Technology	773.14 #	770.54	2.60	0.34%	767.51	786.73	537.98	1,029.21	-14.14% €
FTSE/Athex Telecommunications	3,738.92 #	3,723.12	15.80	0.42%	3,723.12	3,769.62	2,480.07	3,960.95	-4.74% €
FTSE/Athex Utilities	3,400.85 €	3,404.17	-3.32	-0.10%	3,385.85	3,419.22	1,865.80	3,457.24	6.76% #
FTSE/Athex Health Care	433.53 €	434.16	-0.63	-0.15%	432.28	434.16	395.48	508.96	-14.12% €
Athex All Share Index	155.87 #	155.36	0.52	0.33%	155.87	155.87	122.81	223.49	-27.72% €
Hellenic Corporate Bond Index	116.95 #	116.81	0.14	0.12%			106.56	121.22	-2.76% €
Hellenic Corporate Bond Price Index	91.04 #	90.94	0.10	0.11%			84.04	96.15	-4.88% €

Note 1: FTSE/Med 100, Hellenic Corporate Bond Price Index and Hellenic Corporate Bond Index closing prices refer to the previous trading day of 20/08/2020.

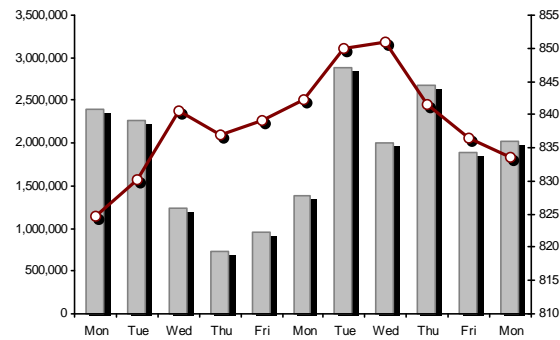
Note 2: The Hellenic Mid & Small Cap Index is a Customized index calculated by the Athens Exchange.

Athex Indices

FTSE/Large Cap

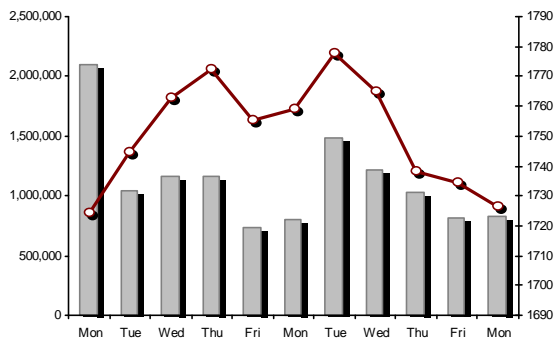


24/08/2020: -0.20% FTSE/Athex Mid Cap Index

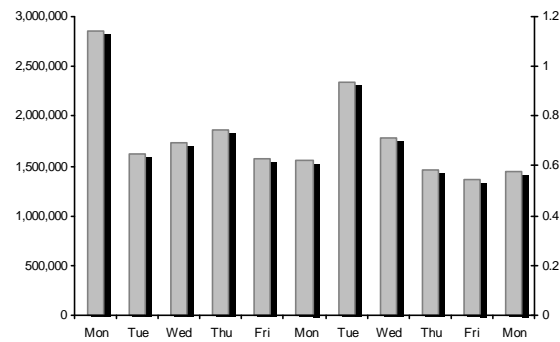


24/08/2020: -0.33%

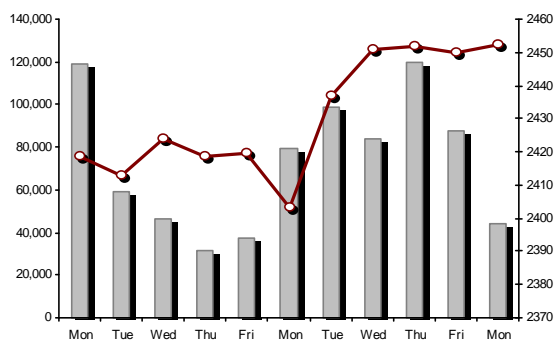
FTSE/ATHEX Global Traders Index Plus



24/08/2020: -0.46% FTSE/ATHEX Global Traders Index

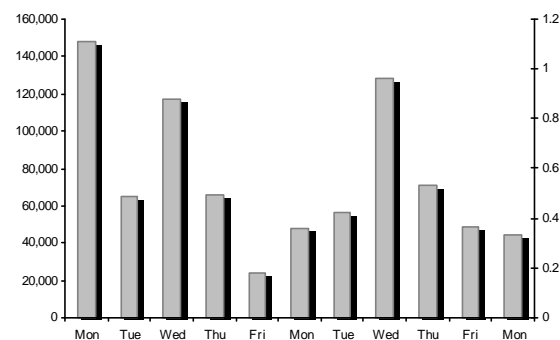


FTSE/ATHEX Mid & Small Cap Factor-Weighted Index



24/08/2020: 0.11%

ATHEX Mid & SmallCap Price Index



Indices volume of transactions

Indices closing prices

## Analytic Figures for Athex Market's Boards and Categories

	Total Traded Securities	Main Market	Surveillance	Exchange Traded Funds (ETFs)
Totals	107	93	13	1
Gain / Lose / Same:	34 / 51 / 22	33 / 46 / 14	1 / 4 / 8	0 / 1 / 0
Athex Capitalisation (mill. €) **	44,370.14	44,117.76	252.38	
Daily Average Trans/ons Value(thou.€)	66,015.85	65,985.95	74.15	49.57
Transactions Value	19,918.30	19,874.01	33.76	10.53
Main Board:	19,004.67	18,960.38	33.76	10.53
Blocks Board 6_2_3:	913.63	913.63	0.00	0.00
Forced Sales Board:	0.00	0.00	0.00	0.00
Special Terms Board:	0.00	0.00	0.00	0.00
Daily Average Transactions Volume	43,352,382	42,881,037	499,072	2,646
Transactions Volume	11,683,061	11,435,421	246,943	697
Main Board:	11,615,885	11,368,245	246,943	697
Blocks Board 6_2_3:	67,176	67,176	0	0
Forced Sales Board:	0	0	0	0
Special Terms Board:	0	0	0	0
Daily Average Number of Trades	33,014	32,878	134	4
Number of Trades	14,439	14,356	79	4
Main Board:	14,438	14,355	79	4
Blocks Board 6_2_3:	1	1	0	0
Forced Sales Board:	0	0	0	0
Special Terms Board:	0	0	0	0

## Trading Details by Athex Sectors and Financial Instruments (ETFs)

Code	Sectors	Gain / Lose / Same	Number of Trades	Transactions Volume	Transactions Value	% of Total Trans. Value
3010	- Banks	2 / 4 / 0	4,143	7,274,323	4,520,716.15	22.70%
5510	- Basic Resources	5 / 5 / 1	271	142,270	257,539.04	1.29%
5010	- Construction & Materials	2 / 7 / 3	866	394,157	723,819.59	3.63%
4020	- Consumer Products & Services	1 / 4 / 1	1,075	134,707	1,508,741.68	7.57%
6010	- Energy	1 / 2 / 0	840	74,002	727,026.45	3.65%
12000	- Financial Instruments	0 / 1 / 0	4	697	10,530.60	0.05%
3020	- Financial Services	1 / 1 / 2	427	1,733,296	214,110.80	1.07%
4510	- Food Beverage & Tobacco	3 / 1 / 2	195	23,732	438,341.11	2.20%
2010	- Health Care	0 / 3 / 0	17	8,529	7,690.10	0.04%
5020	- Industrial Goods & Service	6 / 8 / 1	734	188,612	777,645.95	3.90%
3030	- Insurance	0 / 0 / 1	17	2,329	8,189.94	0.04%
4030	- Media	1 / 0 / 0	4	4,005	744.94	0.00%
4520	- Personal Care, Drug & Grocery Stores	1 / 1 / 1	161	12,146	86,603.79	0.43%
3510	- Real Estate	3 / 1 / 3	365	76,779	386,896.16	1.94%
4040	- Retail	1 / 3 / 1	128	35,828	144,368.56	0.72%
1010	- Technology	3 / 2 / 3	198	64,567	62,521.12	0.31%
1510	- Telecommunications	1 / 2 / 1	1,384	465,159	4,671,450.62	23.45%
4050	- Travel & Leisure	1 / 3 / 2	1,593	592,560	2,982,857.58	14.98%
6510	- Utilities	2 / 3 / 0	2,017	455,363	2,388,509.30	11.99%

## Top 10 best &amp; worst performing Shares

## Main Market

With positive Price change	Closing price	change	With negative Price change	Closing price	change
EYDAP S.A. (CR)	6.94	4.68% #	ADMIE (IPTO) HOLDING S.A. (CR)	2.225	-4.30% €
BYTE COMPUTER SA (CR)	0.938	3.76% #	MARFIN INVESTMENT GROUP (CR)	0.0505	-3.44% €
KEKROPS SA (CR)	2.49	3.32% #	PETROPOULOS PETROS (CR)	3.88	-2.51% €
ELVALHALCOR (CR)	1.256	3.12% #	AEGEAN AIRLINES (CR)	3.55	-2.34% €
CC HBC AG (CR)	23.1	2.62% #	GEK TERNA (CR)	5.88	-2.00% €
KRI-KRI S.A. (CR)	6	1.70% #	CENERGY HOLDINGS (CB)	0.913	-1.93% €
BANK OF GREECE (CR)	13.18	1.38% #	IKTINOS HELLAS SA (CR)	0.577	-1.70% €
MOTOR OIL (CR)	11.55	1.32% #	ALPHA BANK (CR)	0.531	-1.67% €
TPA SA (CR)	21.7	0.46% #	NATIONAL BANK (CR)	1.127	-1.66% €
OTE (CR)	13.58	0.44% #	TECHNICAL OLYMPIC SA (CR)	1.42	-1.53% €
With the highest Transactions Value	Value (thou. €)	change	With the highest Transactions Volume	Volume	change
OTE (CR)	4,593.91	0.44% #	EUROBANK HOLDINGS (CR)	3,609,245	-0.24% €
OPAP (CR)	2,828.20	-1.09% €	ALPHA BANK (CR)	1,987,773	-1.67% €
EUROBANK HOLDINGS (CR)	1,495.44	-0.24% €	MARFIN INVESTMENT GROUP (CR)	1,688,709	-3.44% €
JUMBO SA (CR)	1,435.44	-1.38% €	NATIONAL BANK (CR)	1,021,924	-1.66% €
NATIONAL BANK (CR)	1,170.39	-1.66% €	PIRAEUS BANK (CR)	587,031	0.40% #
ALPHA BANK (CR)	1,071.41	-1.67% €	OPAP (CR)	365,000	-1.09% €
TERNA ENERGY (CR)	1,066.11	-0.52% €	OTE (CR)	337,772	0.44% #
PIRAEUS BANK (CR)	731.62	0.40% #	ELLAKTOR (CR)	267,273	-0.98% €
MOTOR OIL (CR)	623.89	1.32% #	ADMIE (IPTO) HOLDING S.A. (CR)	180,708	-4.30% €
MYTILINEOS (CR)	558.10	-0.39% €	INTRACOM HOLDINGS (CR)	120,387	-1.43% €

Note: Stocks that are not included in the "Low Dispersion" and "Under Supervision" categories, and the transactions value is more than 10,000 €.



## Derivatives Summary

	Number of Trades	Volume	Open Interest
<b>Index Futures</b>	<b>112</b>	<b>534</b>	<b>3,161</b>
FTSE/Athex Large Cap	112	534	3,161
<b>Stock Futures</b>	<b>764</b>	<b>10,180</b>	<b>266,054</b>
ADMIE (IPTO) HOLDING S.A. (CR)	33	181	2,909
ALPHA BANK (CR)	171	3,143	88,542
ATTICA BANK S.A. (CR)	0	0	0
CC HBC AG (CR)	10	16	123
CENERGY HOLDINGS (CB)	0	0	2,070
ELLAKTOR (CR)	40	371	9,630
EUROBANK HOLDINGS (CR)	105	3,263	36,317
EYDAP S.A. (CR)	15	15	101
FOURLIS (CR)	1	1	52
GEK TERNA (CR)	23	74	3,394
HELLENIC EXCHANGES-A.S.E. (CR)	2	3	1,465
HELLENIC PETROLEUM (CR)	6	14	1,461
INTRACOM HOLDINGS (CR)	1	1	982
JUMBO SA (CR)	50	136	414
LAMDA DEVELOPMENT SA (CR)	4	8	2,139
MARFIN INVESTMENT GROUP (CR)	12	135	44,800
MOTOR OIL (CR)	9	10	629
MYTILINEOS (CR)	30	73	5,700
NATIONAL BANK (CR)	107	1,657	34,230
OPAP (CR)	22	113	2,577
OTE (CR)	22	99	1,880
P.P.A. S.A. (CR)	0	0	354
PIRAEUS BANK (CR)	58	677	11,754
PPC (CR)	27	135	8,548
TERNA ENERGY (CR)	5	23	2,175
TITAN CEMENT (CB)	7	24	1,670
VIOHALCO SA/NV (CB)	4	8	2,138
<b>Index Options</b>	<b>4</b>	<b>140</b>	<b>865</b>
FTSE/Athex Large Cap	4	140	865
<b>Stock Options</b>	<b>4</b>	<b>22</b>	<b>789</b>
ALPHA BANK (CR)	0	0	100
NATIONAL BANK (CR)	0	0	460
OPAP (CR)	0	0	50
OTE (CR)	4	22	80
PIRAEUS BANK (CR)	0	0	14
PPC (CR)	0	0	85
<b>Total Derivatives Traded</b>	<b>884</b>	<b>10,876</b>	<b>270,869</b>

Number of Outstanding Securities	Nominal Value	Dividends [1] 2017 2018 2019	Date of Last Dividend [2]	Coupon Right	Note	Shares	Closing price	% change	Previous closing price/date	Open price	Price min	Price max	Last price	Avg price	Last Bid [7]	Last Ask [7]	P/E after tax	Year	Volume	Trades	Transactions Value[8]	Company Mkt Value (thou. €)	Year low	Year high	Sector[4]					
1,543,699,381	0.300	---	---	---	07/04/2008	18/04/2017	---	---	---	ALPHA BANK (CR)	0.531	-1.67	€	0.54	21/08/2020	0.541	0.531	0.5488	0.531	0.53955998@0.531	5000@0.533	---	---	1,987,773	1,413	1,071,409.55	819,704.37	0.4832	1.928	30101010
461,254,013	0.300	---	---	---	04/06/2008	30/04/2018	---	---	---	ATTICA BANK S.A. (CR)	0.176	-0.34	€	0.1766	21/08/2020	0.1762	0.176	0.1788	0.176	0.17725898@0.176	2000@0.178	---	---	65,267	74	11,533.73	81,180.71	0.16	0.412	30101010
48,855,000	0.080	(0.275)	(0.375)	0.23	20/07/2020	25/06/2019	---	---	---	AUTOHELLAS SA (CR)	3.46	0.14	#	3.455	21/08/2020	3.46	3.41	3.49	3.46	3.443	87@3.47	---	---	16,931	119	58,289.48	169,038.30	3.08	8.28	40201040
190,162,681	---	---	---	---	07/12/2016	---	---	---	---	CENERGY HOLDINGS (CB)	0.913	-1.93	€	0.931	21/08/2020	0.922	0.91	0.93	0.913	0.919	4572@0.913	---	---	26,314	49	24,183.94	173,618.53	0.585	1.51	50202010
370,251,684	6.70	0.54	2.57	0.62	02/07/2020	29/04/2013	---	---	---	CC HBC AG (CR)	23.1	2.62	#	22.51	21/08/2020	23	22.2	23.1	23.1	22.539	1624@22.39	---	---	18,709	152	421,675.53	8,552,813.90	15.385	34.88	45101020
13,400,000	0.300	---	---	---	28/12/2015	18/01/2019	---	---	---	EPSILON NET (CR)	2.6	---	~	2.6	21/08/2020	2.64	2.56	2.64	2.6	2.587	100@2.58	---	---	4,381	23	11,334.16	34,840.00	1.6	2.96	10101015
3,709,161,852	0.230	---	---	---	02/05/2008	20/05/2019	---	---	---	EUROBANK HOLDINGS (CR)	0.415	-0.24	€	0.416	21/08/2020	0.419	0.4088	0.4201	0.415	0.414	558@0.414	---	---	3,609,245	1,125	1,495,443.25	1,539,302.17	0.282	0.924	30101010
52,004,961	0.810	---	---	---	21/06/2010	23/07/2019	---	---	---	FOURLIS (CR)	4.105	0.12	#	4.1	21/08/2020	4.1	4.065	4.11	4.105	4.1	1161@4.07	---	---	34,448	111	141,233.10	213,480.36	2.745	5.98	40401010
136,059,759	0.880	0.36	0.39	0.062	30/06/2020	05/03/2014	---	---	---	JUMBO SA (CR)	14.95	-1.38	€	15.16	21/08/2020	15.16	14.95	15.52	14.95	15.127	9186@14.95	---	---	94,890	902	1,435,439.11	2,034,093.40	9.94	19.48	40203045
176,736,715	0.300	---	---	---	30/05/2007	27/11/2019	---	---	---	LAMDA DEVELOPMENT SA (CR)	5.69	-0.18	€	5.7	21/08/2020	5.77	5.67	5.77	5.69	5.711	1380@5.68	---	---	62,464	271	356,755.97	1,005,631.91	4.26	8.85	35101010
939,510,748	0.300	---	---	---	26/04/2007	29/08/2014	---	---	---	MARFIN INVESTMENT GROUP (CR)	0.0505	-3.44	€	0.0523	21/08/2020	0.0523	0.0505	0.0527	0.0505	0.05152750@0.050	70000@0.052	---	---	1,688,709	189	86,146.88	47,445.29	0.0474	0.1296	30202000
82,447,868	---	---	---	---	23/07/2019	---	---	---	---	TITAN CEMENT (CB)	11.2	0.18	#	11.18	21/08/2020	11.26	11.06	11.26	11.2	11.194	404@11.20	---	---	17,903	190	200,400.72	923,416.12	8.55	19.54	50101030
259,189,761	---	---	---	---	26/02/2016	---	---	---	---	VIOHALCO SA/NV (CB)	2.3	-1.50	€	2.335	21/08/2020	2.35	2.295	2.36	2.3	2.311	1323@2.29	---	---	81,047	152	187,275.37	596,136.45	1.47	3.99	55102015
232,000,000	2.12	---	0.0601	0.0889	24/08/2020	19/06/2017	---	---	---	ADMIE (IPTO) HOLDING S.A. (CR)	2.225	-4.30	€	2.325	21/08/2020	2.25	2.22	2.25	2.225	2.233	800@2.22	---	2019	180,708	452	403,442.94	516,200.00	1.57	2.775	65101015
71,417,100	0.650	0.55	0.6	---	03/06/2019	27/06/2014	---	---	---	AEGEAN AIRLINES (CR)	3.55	-2.34	€	3.635	21/08/2020	3.635	3.53	3.635	3.55	3.555	1050@3.54	---	---	34,366	211	122,186.70	253,530.71	3.2	9.08	40501010
103,423,291	0.570	---	---	---	01/08/2011	19/04/2016	---	---	---	GEK TERNA (CR)	5.88	-2.00	€	6	21/08/2020	6.07	5.88	6.08	5.88	5.962	170@5.88	---	---	30,346	222	180,931.38	608,128.95	3.705	8.93	50101010
232,000,000	2.48	---	---	---	20/07/2015	12/12/2001	---	---	---	PPC (CR)	3.78	-0.26	€	3.79	21/08/2020	3.794	3.766	3.802	3.78	3.788	3475@3.78	---	---	107,854	335	408,601.82	876,960.00	1.453	4.388	65101015
914,715,153	3.00	---	---	---	16/05/2008	29/08/2018	---	---	---	NATIONAL BANK (CR)	1.127	-1.66	€	1.146	21/08/2020	1.16	1.127	1.167	1.127	1.145	5957@1.13	---	---	1,021,924	903	1,170,388.65	1,030,883.98	0.815	3.072	30101010
214,272,003	1.03	---	---	---	05/07/2011	22/07/2019	---	---	---	ELLAKTOR (CR)	1.109	-0.98	€	1.12	21/08/2020	1.134	1.099	1.134	1.109	1.113	9127@1.11	---	---	267,273	323	297,528.45	237,627.65	0.512	1.968	50101010
60,348,000	0.490	0.0502	0.05	0.07	04/06/2020	05/08/2020	---	---	---	HELLENIC EXCHANGES-A.S.E. (CR)	2.86	---	~	2.86	21/08/2020	2.87	2.835	2.9	2.86	2.861	1832@2.86	---	---	44,557	233	127,476.92	172,595.28	2.54	5.05	30202015
305,635,185	2.18	0.4	0.75	0.5	29/06/2020	01/10/2003	---	---	---	HELLENIC PETROLEUM (CR)	5.22	-0.76	€	5.26	21/08/2020	5.28	5.21	5.29	5.22	5.236	170@5.22	---	---	19,696	148	103,134.88	1,595,415.67	4.4	8.8	60101000
106,500,000	0.600	0.2	0.27	0.38	30/06/2020	28/01/2000	---	---	---	EYDAP S.A. (CR)	6.94	4.68	#	6.63	21/08/2020	6.8	6.73	6.97	6.94	6.827	130@6.74	---	---	74,539	586	508,891.02	739,110.00	4.95	7.78	65102030
110,782,980	0.750	1.3	1.3	1.1507	24/06/2020	04/11/2013	---	---	---	MOTOR OIL (CR)	11.55	1.32	#	11.4	21/08/2020	11.62	11.4	11.62	11.55	11.489	3972@11.40	---	---	54,304	691	623,890.38	1,279,543.42	8.6	21.24	60101020
142,891,161	0.970	0.32	0.36	0.3617	24/06/2020	07/07/2017	---	---	---	MYTILINEOS (CR)	7.75	-0.39	€	7.78	21/08/2020	7.78	7.75	7.85	7.75	7.786	2015@7.75	---	---	71,679	411	558,097.42	1,107,406.50	4.896	10.39	50203000
25,000,000	2.00	0.1712	0.424	0.5388	27/07/2020	08/08/2003	---	---	---	P.P.A. S.A. (CR)	16.22	-0.25	€	16.26	21/08/2020	16.3	16.04	16.3	16.22	16.099	170@16.06	---	2019	3,148	53	50,679.04	405,500.00	12.96	23	50206060
341,426,387	0.300	0.4	0.7	0.3	21/07/2020	25/04/2001	---	---	---	OPAP (CR)	7.7	-1.09	€	7.785	21/08/2020	7.785	7.7	7.9	7.7	7.749	2323@7.70	---	---	365,000	1,292	2,828,203.65	2,628,983.18	5.4021	12.653	40501020
470,174,576	2.83	0.3529	0.5245	0.5554	09/07/2020	18/06/1998	---	---	---	OTE (CR)	13.58	0.44	#	13.52	21/08/2020	13.52	13.52	13.69	13.58	13.601	4797@13.58	---	---	337,772	1,238	4,593,905.48	6,384,970.74	9.01	14.39	15102015
436,659,164	6.00	---	---	---	16/05/2008	31/07/2017	---	---	---	PIRAEUS BANK (CR)	1.245	0.40	#	1.24	21/08/2020	1.259	1.234	1.259	1.245	1.246	899@1.24	---	---	587,031	568	731,622.11	543,640.66	0.92	3.394	30101010
69,877,484	0.780	(0.14)	0.1489	0.167	11/05/2020	13/06/2018	---	---	---	GR. SARANTIS S.A. (CR)	8.52	-1.04	€	8.61	21/08/2020	8.62	8.42	8.66	8.52	8.514	1380@8.52	---	---	9,514	139	81,002.47	595,356.16	5.2	9.2	45201020
113,918,936	0.300	0.0419	---	0.1745	22/06/2020	05/03/2020	---	---	---	TERNA ENERGY (CR)	11.56	-0.52	€	11.62	21/08/2020	11.6	11.54	11.7	11.56	11.601	20@11.54	---	---	91,902	640	1,066,114.48	1,316,902.90	5.44	12.4	65101010

## Main Market - Medium Liquidity Class

13,126,020	0.490	---	---	---	08/07/2010	06/09/2019	---	---	---	AS COMPANY SA (CR)	1.905	-1.55	€	1.935	21/08/2020	1.935	1.905	1.935	1.905	1.928	50@1.85	---	---	640	3	1,233.90	25,005.07	1.69	2.99	40401030
129,514,137	0.300	---	---	---	01/07/2008	21/02/2020	---	---	---	AVE (CR)	0.188	1.90	#	0.1845	21/08/2020	0.1875	0.184	0.188	0.188	0.186	3000@0.182	---	---	4,005	4	744.94	24,348.66	0.12	0.38	40301010
35,764,593	2.10	0.035	0.055	0.039	01/04/2020	25/11/2019	---	---	---	BRIQ PROPERTIES (CR)	1.645	2.17	#	1.61	21/08/2020	1.61	1.61	1.645	1.645	1.626	297@1.60	---	---	3,851	18	6,262.87	58,832.76	1.5	2.3	35102030
15,816,009	0.300	---	---	---	01/07/2009	17/07/2000	---	---	---	BYTE COMPUTER SA (CR)	0.938	3.76	#	0.904	21/08/2020	0.908	0.908	0.946	0.938	0.932	1000@0.926	---	---	24,555	81	22,896.83	14,835.42	0.515	1.24	10101010
101,123,806	0.360	---	---	---	22/07/2010	28/06/2011	---	---	---	CENTRIC HOLDINGS (CR)	0.235	-0.42	€	0.236	21/08/2020	0.235	0.235	0.23												

## Section 2: Analytic Figures of Shares Transactions

Monday, 24 August, 2020

Number of Outstanding Securities	Nominal Value	Dividends [1]			Date of Last Coupon		Note	Shares	Closing price	% change	Previous closing price/date	Open price	Price min	Price max	Last price	Avg price	Last Bid [7]	Last Ask [7]	P/E after tax	Year	Volume	Trades	Transactions Value[8]	Company Mkt Value (thou. €)	Year low	Year high	Sector[4]		
		2017	2018	2019	Dividend [2]	Right																							
20,578,374	0.620	0.1	---	0.04	20/07/2020	18/05/2015	---	INFORM P. LYKOS (CR)	1.08	-0.46	€ 1.085	21/08/2020	1.08	1.06	1.085	1.06	1.079	900@1.07	200@1.08	---	---	6,240	10	6,735.62	22,224.64	0.66	1.7	50205030	
76,000,000	1.00	---	---	---	03/07/2007	17/09/2018	---	INTRACOM HOLDINGS (CR)	0.621	-1.43	€ 0.63	21/08/2020	0.637	0.621	0.637	0.621	0.626	12200@0.620	2000@0.629	---	---	120,387	140	75,418.04	47,196.00	0.28	0.915	15101010	
30,477,156	0.300	---	---	---	12/08/2008	17/10/2017	---	INTRACOM CONSTR. (CR)	1.19	-0.83	€ 1.2	21/08/2020	1.2	1.19	1.225	1.19	1.205	1260@1.19	363@1.22	---	---	6,910	18	8,325.71	36,267.82	0.58	1.8	50101010	
4,419,616	1.58	---	---	---	21/07/2011	04/03/2015	---	MEDICON S.A (CR)	1.77	-1.12	€ 1.79	21/08/2020	1.73	1.73	1.77	1.77	1.733	10@1.74	748@1.75	---	---	1,132	6	1,961.64	7,822.72	1.5	2.98	20102010	
468,700	0.73	4.869	---	---	25/04/2019	21/05/2004	---	MERMEREN KOMB. A.D. PR. (GDR)	49	---	---	49	21/08/2020	---	---	---	---	5@45.20	50@48.00	1.14	2019	---	---	---	22,966.30	40	67.8	55102000	
10,500,000	0.950	---	---	---	24/06/2008	30/06/2017	---	MEVACO SA (CR)	1.22	-1.61	€ 1.24	21/08/2020	1.23	1.21	1.23	1.22	1.22	1296@1.22	1442@1.23	28.69	2019	5,305	11	6,470.51	12,810.00	1.21	1.87	55102015	
3,953,090	0.300	0.16	0.15	0.5	04/06/2020	05/12/2012	---	PAPERPACK (CR)	5.2	---	---	5.2	21/08/2020	---	---	---	---	600@4.72	20@5.20	10.52	2019	---	---	---	20,556.07	3.98	6.1	50203030	
11,812,193	0.470	---	---	---	26/05/2020	07/04/2020	---	PROFILE SA (CR)	3.58	0.70	# 3.555	21/08/2020	3.61	3.56	3.61	3.58	3.58	120@3.57	140@3.58	---	---	920	8	3,293.55	42,287.65	2.12	4.34	10101010	
27,345,120	0.280	---	---	---	18/07/2005	26/02/2014	---	QUALITY & RELIABILITY SA (CR)	0.198	-5.26	€ 0.209	21/08/2020	0.202	0.1975	0.206	0.198	0.2	5000@0.197	750@0.200	---	---	22,525	29	4,504.08	5,414.33	0.17	0.305	10101010	
35,740,896	1.33	---	---	---	05/09/2008	21/07/2020	---	QUEST HOLDINGS (CR)	7.92	---	---	7.92	21/08/2020	8.04	7.82	8.1	7.92	7.942	100@7.84	130@7.96	---	---	1,195	15	9,491.20	283,067.90	5.6	9.76	10101010
57,434,884	1.31	---	---	---	05/06/2008	12/06/2009	---	REDS S.A. (CR)	0.914	---	---	0.914	21/08/2020	---	---	---	---	3000@0.876	1500@0.916	---	---	---	---	---	52,495.48	0.752	1.47	35101010	
6,456,530	1.08	---	---	0.065	09/07/2020	02/08/2010	---	SPACE HELLAS SA (CR)	4.69	---	---	4.69	21/08/2020	4.69	4.69	4.69	4.69	300@4.34	200@4.69	---	---	100	1	469.00	30,281.13	3.02	5.88	15101010	
15,627,315	0.300	---	---	---	16/11/1992	24/07/2019	---	UNIBIOS (CR)	0.275	1.48	# 0.271	21/08/2020	0.275	0.275	0.275	0.275	0.275	100@0.256	1180@0.275	---	---	20	1	5.50	4,297.51	0.186	0.463	50204000	
144,321,516	0.300	---	---	---	01/07/2011	22/01/2020	---	AVAX S.A. (CR)	0.381	-2.81	€ 0.392	21/08/2020	0.3915	0.381	0.3965	0.381	0.388	473@0.381	2000@0.391	---	---	20,731	33	8,049.43	54,986.50	0.2225	0.64	50101010	
32,413,681	0.370	---	---	---	15/07/2009	11/05/2000	---	ALUMIL (CR)	0.794	1.28	# 0.784	21/08/2020	0.798	0.784	0.798	0.796	0.794	10@0.784	500@0.794	---	---	571	4	453.38	25,736.46	0.431	1.62	55102035	
24,060,000	0.300	0.01	0.015	0.035	05/05/2020	01/07/2019	---	GEN. COMMERCIAL & IND.SA (CR)	0.735	---	---	0.735	21/08/2020	---	---	---	---	1700@0.680	500@0.725	15.88	2019	---	---	---	17,684.10	0.54	1.13	50205010	
34,720,000	0.310	---	---	---	16/06/2010	01/08/2007	---	DROMEAS SA (CR)	0.29	-1.02	€ 0.293	21/08/2020	0.29	0.253	0.29	0.29	0.289	500@0.268	1927@0.290	---	---	10,112	9	2,922.35	10,068.80	0.25	0.485	40202015	
13,673,200	0.880	---	---	---	18/07/2008	26/07/2001	---	EVROFARMA SA (CR)	0.774	1.04	# 0.766	21/08/2020	0.776	0.762	0.776	0.774	0.762	300@0.754	486@0.774	---	---	1,023	7	779.64	10,583.06	0.61	1.375	45102020	
27,848,000	0.300	0.0034	---	---	20/08/2018	02/09/2003	---	NEWSPHONE HELLAS SA (CR)	0.468	---	---	0.468	21/08/2020	---	---	---	---	9000@0.442	17340@0.470	---	---	---	---	---	13,032.86	0.199	0.53	15102015	
11,250,000	0.520	---	0.04	---	22/07/2019	09/11/2015	---	EKTER SA (CR)	0.758	0.26	# 0.756	21/08/2020	0.762	0.74	0.762	0.757	0.758	250@0.738	1695@0.780	---	---	1,610	6	1,220.07	8,527.50	0.54	1.33	50101010	
18,410,839	1.00	---	---	---	07/07/2009	10/09/2010	---	ELASTRON (CR)	0.898	-0.22	€ 0.9	21/08/2020	0.898	0.898	0.898	0.898	0.898	500@0.880	690@0.916	---	---	9	1	8.08	16,532.93	0.6	1.58	55102010	
375,241,586	0.390	---	0.03	0.03	01/06/2020	14/07/2006	---	ELVALHALCOR (CR)	1.256	3.12	# 1.218	21/08/2020	1.23	1.2	1.26	1.256	1.219	500@1.21	1335@1.26	---	---	50,990	79	62,143.83	471,303.43	0.83	1.836	55102015	
31,734,530	1.60	---	---	---	09/07/2007	19/07/2006	---	ELGEKA SA (CR)	0.32	---	---	0.32	21/08/2020	0.32	0.32	0.32	0.32	500@0.235	1323@0.320	---	---	56	1	17.92	10,155.05	0.214	0.565	45201010	
19,864,886	5.60	0.672	0.672	0.672	26/03/2020	02/07/2008	---	BANK OF GREECE (CR)	13.18	1.38	# 13	21/08/2020	13.26	12.94	13.32	13.18	13.078	5@12.94	111@13.18	---	---	3,083	60	40,318.86	261,819.20	11.9	16.68	30101010	
26,730,187	0.520	0.04	0.06	0.04	27/07/2020	01/08/2017	---	ELTON SA (CR)	1.23	-0.41	€ 1.235	21/08/2020	1.23	1.23	1.235	1.235	1.231	42@1.22	1823@1.24	---	---	178	3	219.07	32,878.13	1.02	1.85	50205010	
30,000,000	0.050	(0.0217)	(0.03)	---	28/06/2019	11/06/2020	---	ENTERSOFT (CR)	1.62	-2.41	€ 1.66	21/08/2020	1.63	1.62	1.64	1.62	1.631	200@1.61	398@1.62	---	---	4,737	13	7,725.31	48,600.00	0.9	1.74	10101015	
36,300,000	1.12	0.221	0.126	0.268	09/07/2020	12/12/2007	---	THESSALONIKA WATER & SEWERAGE	4.05	2.53	# 3.95	21/08/2020	4.04	4.04	4.08	4.08	4.053	50@3.97	13@3.99	---	---	360	4	1,459.04	147,015.00	3.06	5	65102030	
27,503,677	0.630	0.12	0.13	0.2446	06/05/2020	18/10/1999	---	EUROPEAN RELIANCE INSUR. (CR)	3.56	---	---	3.56	21/08/2020	3.63	3.5	3.63	3.56	3.517	100@3.54	481@3.56	---	---	2,329	17	8,189.94	97,913.09	2.7	5.24	30302010
114,320,400	0.100	(0.0175)	(0.0575)	---	23/03/2020	05/08/2019	---	IKTINOS HELLAS SA (CR)	0.577	-1.70	€ 0.587	21/08/2020	0.59	0.567	0.59	0.577	0.582	1000@0.567	396@0.572	---	---	37,364	53	21,752.59	65,962.87	0.53	1.206	50101035	
8,226,132	0.900	---	---	---	15/05/2009	13/10/2014	---	ILYDA S.A. (CR)	0.53	---	---	0.53	21/08/2020	0.53	0.442	0.54	0.53	0.522	250@0.515	20@0.530	---	---	6,234	27	3,252.79	4,359.85	0.171	0.61	10101015
8,298,467	0.400	---	---	---	30/08/1993	08/05/2013	---	IDEAL GROUP SA (CR)	1.16	4.50	# 1.11	21/08/2020	1.16	1.16	1.16	1.16	1.16	200@1.10	1000@1.15	---	---	20	2	23.20	9,626.22	0.82	1.42	10102030	
34,986,430	0.440	---	---	---	25/07/2008	23/02/2010	---	INTERWOOD-XYLEMPORIA (CR)	0.154	---	---	0.154	21/08/2020	---	---	---	---	2000@0.108	2000@0.159	---	---	---	---	---	6,080.96	0.125	0.187	50205010	
8,424,900	0.500	---	---	---	12/07/2010	04/07/2019	---	INTERTECH SA (CR)	0.526	0.38	# 0.524	21/08/2020	0.52	0.52	0.526	0.526	0.52	2500@0.500	995@0.526	---	2019	309	3	160.71	4,431.50	0.402	0.925	50205010	
19,804,134	0.300	---	---	---	01/07/2004	06/11/2017	---	KEKROPS SA (CR)	2.49	3.32	# 2.41	21/08/2020	2.4	2.4	2.5	2.49	2.464	50@2.43	980@2.48	---	2019	6,554	56	16,150.45	49,312.29	0.87	2.57	35101010	
40,219,218	0.260	---	---	---	02/07/2018	10/06/2019	---	KLOUKINAS - LAPPAS SA (CR)	0.508	-3.79	€ 0.528	21/08/2020	0.518	0.508	0.52	0.508	0.51	700@0.504	6528@0.510	---	---	10,375	13	5,290.50	20,431.36	0.352	0.834	50101010	
11,510,102	0.890	---	---	---	24/06/2005	06/10/1999	---	NAFPAKTOS TEXTILE (CR)	0.7	---	---	0.7	21/08/2020	---	---	---	---	699@0.530	3167@0.700	---	---	---	---	---	8,057.07	0.448	0.92	55101020	
21,224,340	0.420	0.005	---	---	10/09/2018	25/04/2006	---	KORDELLOS BROS SA (CR)	0.1895	0.26	# 0.189	21/08/2020	0.1895	0.1895	0.1895	0.1895	0.19	2000@0.175	1765@										

## Daily Official List

Year: 141 Trading Day No: 159

## Section 2: Analytic Figures of Shares Transactions

Monday, 24 August, 2020

Number of Outstanding Securities	Nominal Value	Dividends [1]			Date of Last Coupon		Note	Shares	Closing price	% change	Previous closing price/date	Open price	Price min	Price max	Last price	Avg price	Last Bid [7]	Last Ask [7]	P/E after tax	Year	Volume	Trades	Transactions Value[8]	Company Mkt Value (thou. €)	Year low	Year high	Sector[4]		
		2017	2018	2019	Dividend [2]	Right																							
6,200,000	0.500	---	---	---	22/06/2010	01/11/1995	---	MINERVA KNITWEAR (CR)	0.228	---	0.228	21/08/2020	---	---	---	---	---	1000@0.230	---	---	---	---	---	1,413.60	0.2	0.775	40204020		
9,819,370	0.690	---	---	---	14/08/2007	09/01/2004	---	MATHIOS REFRACTORY SA (CR)	0.404	---	0.404	21/08/2020	---	---	---	---	500@0.358	622@0.402	---	---	---	---	---	3,967.03	0.312	0.73	55101000		
29,250,000	0.360	---	---	0.02	01/07/2020	25/04/2019	---	MOTODYNAMICS S.A. (CR)	0.91	-4.21	€	0.95	21/08/2020	0.91	0.91	0.91	0.91	0.91	50@0.864	540@0.910	---	---	10	1	9.10	26,617.50	0.725	1.79	40401030
32,188,050	1.04	---	---	---	21/07/2008	20/01/2000	---	MOUZAKIS (CR)	0.324	0.62	#	0.322	21/08/2020	0.322	0.322	0.328	0.328	0.324	3000@0.322	200@0.330	---	---	1,550	3	502.40	10,428.93	0.256	0.515	55101020
10,080,000	3.00	0.45	0.57	1.17	06/07/2020	27/08/2001	---	TPA SA (CR)	21.7	0.46	#	21.6	21/08/2020	21.7	21.4	21.7	21.7	21.479	4@21.40	307@21.70	13.29	2019	1,070	8	22,982.20	218,736.00	18.05	28.2	50206060
4,971,466	1.46	---	---	---	04/07/2007	08/10/2003	---	PAIRIS SA (CR)	0.274	0.74	#	0.272	21/08/2020	0.274	0.274	0.274	0.274	0.274	500@0.194	1000@0.272	---	---	20	1	5.48	1,362.18	0.188	0.5	50203030
25,118,410	0.560	---	---	---	17/08/2000	29/04/2020	---	PAPOUTSANIS (CR)	2.17	0.46	#	2.16	21/08/2020	2.15	2.15	2.2	2.2	2.167	52@2.17	100@2.19	49.31	2018	2,576	21	5,583.40	54,506.95	0.96	2.29	45201020
7,070,400	0.930	---	---	0.1013	24/08/2020	06/05/2016	---	PETROPOULOS PETROS (CR)	3.88	-2.51	€	3.98	21/08/2020	3.96	3.82	3.98	3.88	3.934	500@3.84	1490@3.88	---	---	15,964	88	62,795.04	27,433.15	3.82	8.05	50206015
22,075,665	0.330	0.07	0.07	0.02	02/07/2020	27/04/2015	---	PLAISIO COMPUTERS SA (CR)	2.68	-1.83	€	2.73	21/08/2020	2.66	2.66	2.72	2.68	2.688	107@2.68	300@2.73	---	---	700	11	1,881.90	59,162.78	1.885	3.84	40401010
43,741,452	0.660	0.0471	0.0444	0.0458	17/07/2020	01/11/1999	---	THRACE PLASTICS SA (CR)	1.92	-0.93	€	1.938	21/08/2020	1.938	1.92	1.978	1.92	1.948	624@1.92	30@1.96	---	---	18,521	87	36,072.77	83,983.59	1.23	2.15	50203015
21,912,599	0.300	---	---	---	11/04/2011	23/02/2007	---	REVOIL (CR)	0.594	-10.00	€	0.66	21/08/2020	0.594	0.594	0.594	0.594	0.595	95@0.600	2@0.648	4.33	2019	2	1	1.19	13,016.08	0.55	0.975	60101020
28,438,268	0.300	---	---	---	21/08/2006	24/11/1999	---	SPIROY AGRICULTURE SA (CR)	0.168	-1.18	€	0.17	21/08/2020	0.17	0.165	0.1725	0.168	0.168	509@0.167	300@0.188	---	---	1,418	18	238.58	4,777.63	0.093	0.28	45102010
40,693,350	5.00	---	---	---	03/07/2006	26/05/2015	---	TECHNICAL OLYMPIC SA (CR)	1.42	-1.53	€	1.442	21/08/2020	1.442	1.388	1.442	1.42	1.402	209@1.39	2404@1.39	---	---	7,767	43	10,887.04	57,784.56	1.15	2.68	40202010
1,524,000	0.300	---	---	---	06/07/2007	06/02/2013	---	GIRAKIAN PROFIL (CR)	2.54	4.53	#	2.43	21/08/2020	2.39	2.39	2.54	2.54	2.444	30@1.88	43@2.47	---	2019	103	5	251.72	3,870.96	1.2	4.28	55102010
10,203,575	0.730	---	---	---	16/07/2007	18/10/1999	---	FIERATEX SA (CR)	0.376	-0.53	€	0.378	21/08/2020	0.33	0.33	0.376	0.376	0.338	28@0.330	3947@0.376	---	2019	97	6	32.75	3,836.54	0.262	0.79	55101020
8,340,750	1.16	---	---	---	25/06/2009	17/09/2018	---	HAIDEMENOS SA (CR)	0.525	---	---	0.525	21/08/2020	---	---	---	---	---	300@0.500	197@0.545	---	2019	---	---	---	4,378.89	0.46	1.09	50205030

## Main Market - Low Liquidity Class

14,000,000	4.15	---	---	---	23/04/2010	29/06/1999	---	ALPHA REAL ESTATE SA(CR)	6.5	3.18	#	6.3	21/08/2020	6.25	6.2	6.5	6.5	6.278	111@6.15	50@6.70	---	---	820	10	5,148.00	91,000.00	5.2	7.8	35101015
215,805,843	0.300	---	0.05	---	17/01/2020	29/12/2010	---	ATTICA HOLDINGS (CR)	0.934	7.11	#	0.872	21/08/2020	0.898	0.898	0.936	0.934	0.907	97@0.900	450@0.936	---	---	1,392	11	1,262.32	201,562.66	0.782	1.465	40501015
9,907,500	0.300	---	---	---	06/10/2005	13/02/2002	---	CPI SA (CR)	0.372	---	---	0.372	21/08/2020	---	---	---	---	---	1252@0.336	723@0.402	---	2018	---	---	---	3,685.59	0.316	0.61	10102030
11,720,024	0.540	---	---	0.0632	13/07/2020	30/08/2019	---	FLEXOPACK SA (CR)	6.85	---	---	6.85	21/08/2020	---	---	---	---	---	300@6.45	250@7.15	---	---	---	---	---	80,282.16	5.4	8.3	50203030
10,500,000	4.00	0.31	0.36	0.36	02/07/2020	02/08/2016	---	INTERCONTINENTAL (CR)	6.5	---	---	6.5	21/08/2020	---	---	---	---	---	100@6.50	140@6.70	---	---	---	---	---	68,250.00	5.9	8.35	35102000
4,740,000	0.860	---	---	---	14/03/2003	---	---	LOGISMOS S.A. (CR)	0.675	---	---	0.675	21/08/2020	---	---	---	---	---	---	592@0.730	---	2019	---	---	---	3,199.50	0.448	0.88	10101015
150,520,505	0.500	---	---	---	25/04/2014	10/06/2020	---	TRASTOR REAL EST. INV. CO.(CR)	0.86	---	---	0.86	21/08/2020	0.825	0.825	0.825	0.825	0.825	2500@0.830	500@0.850	27.29	2018	159	1	131.18	129,447.63	0.78	1.14	35102000
401,136	14.50	0.75	---	---	05/04/2018	31/12/2019	---	ANDROMEDA SA (CR)	21	5.00	#	20	21/08/2020	21	21	21	21	21	1@21.00	7@21.80	3.54	2019	19	4	399.00	8,423.86	18.8	27	30202010
15,300,000	0.300	---	---	---	30/07/2009	13/12/1999	---	ATTICA PUBLICATIONS SA (CR)	0.28	---	---	0.28	21/08/2020	---	---	---	---	---	100@0.280	---	---	---	---	---	---	4,284.00	0.22	0.428	40301030
18,810,000	0.400	---	---	---	08/07/2010	14/11/2007	---	VARVERIS - MODA BAGNO SA (CR)	0.35	---	---	0.35	21/08/2020	0.352	0.352	0.352	0.352	0.352	1750@0.315	6532@0.345	---	---	30	2	10.56	6,583.50	0.21	0.64	40401025
23,986,500	1.05	---	---	---	26/06/2009	15/03/2000	---	BIOKARPET S.A.(CR)	0.72	---	---	0.72	21/08/2020	---	---	---	---	---	---	500@0.700	---	---	---	---	---	17,270.28	0.482	1.4	50101035
6,325,000	0.600	0.15	0.103	---	04/07/2019	17/02/2014	---	VOGIATZOGLOU SYSTEMS SA (CR)	1.83	-3.68	€	1.9	21/08/2020	2	1.71	2	1.71	1.832	200@1.72	500@2.08	---	---	250	4	457.99	11,574.75	1.4	2.44	50205010
8,418,750	0.300	0.28	0.32	---	12/06/2019	27/06/2012	---	GEKE (CR)	3.94	---	---	3.94	21/08/2020	3.94	3.94	3.94	3.94	3.94	184@3.96	124@4.32	9.67	2019	124	3	488.56	33,169.88	3.36	5.7	40501025
15,000,000	0.300	---	---	---	06/07/2007	18/07/2000	---	DAIOS PLASTICS SA (CR)	3	---	---	3	21/08/2020	---	---	---	---	---	500@2.70	235@3.30	---	---	---	---	---	45,000.00	2.62	3.28	50203015
3,307,500	0.210	---	---	---	11/08/2010	04/12/2019	---	ELVE SA (CR)	4.12	---	---	4.12	21/08/2020	4.1	4.1	4.1	4.1	4.1	56@4.10	50@4.38	---	---	7	1	28.70	13,626.90	2.94	4.5	40204020
23,828,130	0.500	0.06	0.05	---	22/07/2019	17/02/2009	---	ELINOIL S.A. (CR)	1.45	---	---	1.45	21/08/2020	---	---	---	---	---	500@1.36	1000@1.42	---	---	---	---	---	34,550.79	1.35	1.9	60101020
122,156,754	0.440	---	---	---	12/06/2020	28/03/2018	---	IASO SA (CR)	1.255	---	---	1.255	21/08/2020	---	---	---	---	---	300@1.22	289@1.32	---	---	---	---	---	153,306.73	1.15	1.48	20101010
86,735,980	0.310	---	---	---	06/07/2009	02/01/2002	---	ATHENS MEDICAL CENTER SA (CR)	1.38	-3.16	€	1.425	21/08/2020	1.4	1.38	1.42	1.38	1.412	5@1.39	1112@1.42	---	---	3,092	7	4,366.96	119,695.65	1.09	2.35	20101025
2,566,836	0.440	---	---	---	13/08/2010	09/01/2007	---	INTERWOOD-XYLEMPORIA (PR)	0.27	---	---	0.27	21/08/2020	---	---	---	---	---	---	3074@0.244	---	---	---	---	---	6,080.96	0.244	0.382	50205010
9,742,920	0.400	---	---	---	12/08/2016	14/07/2000	---	KARAMOLEGOS SA (CR)	1.48	---	---	1.48	21/08/2020	---	---	---	---	---	300@1.47	694@1.54	---	---	---	---	---	14,419.52	1.24	2.14	45102020
2,760,000	11.83	9.2	9.5	9.4	29/06/2020	16/07/1990	---	KARELIA (CR)	270	---	---	270	21/08/2020	270	270	270	270	270	1@254.00	1@264.00	---	---	2	1	540.00	745,200.00	228	302	45103010

## Daily Official List

Year: 141 Trading Day No: 159

## Section 2: Analytic Figures of Shares Transactions

Monday, 24 August, 2020

Number of Outstanding Securities	Nominal Value	Dividends [1]			Date of Last Coupon		Note	Shares	Closing price	% change	Previous closing price/date	Open price	Price min	Price max	Last price	Avg price	Last Bid [7]	Last Ask [7]	P/E after tax	Year	Volume	Trades	Transactions Value[8]	Company Mkt Value (thou. €)	Year low	Year high	Sector[4]
2017	2018	2019	Dividend [2]	Right																							
6,700,000	0.800	0.028	0.043	0.053	15/07/2020	29/05/2014	---	MILLS KEPENOS (CR)	1.8	---	1.8	21/08/2020	---	---	---	---	299@1.71	150@1.81	8.84	2019	---	---	---	12,060.00	1.56	2.58	45102020
18,017,472	0.360	---	---	---	15/06/2010	28/08/2017	---	KTIMA KOSTAS LAZARIDIS SA (CR)	1.19	---	1.19	21/08/2020	---	---	---	---	---	272@1.18	---	---	---	---	---	21,440.79	0.91	1.55	45101015
21,364,000	1.12	0.2	0.2	---	29/07/2019	10/08/2005	---	LAMPSA HOTEL SA (CR)	19.8	---	19.8	21/08/2020	---	---	---	---	100@19.70	60@20.00	---	---	---	---	---	423,007.20	17.5	20.6	40501025
5,939,268	0.620	---	---	---	10/07/2003	03/01/2002	---	LANAKAM SA (CR)	1.08	---	1.08	21/08/2020	---	---	---	---	---	120@0.980	---	2018	---	---	---	6,414.41	0.81	1.3	40401020
17,120,280	0.940	---	---	0.07	12/06/2020	02/08/2019	---	LOULIS MILLS SA (CR)	3.02	---	3.02	21/08/2020	---	---	---	---	300@2.78	11@3.08	---	---	---	---	---	51,703.25	2.48	3.74	45102020
8,321,682	0.670	---	---	---	17/08/2007	23/11/1999	---	N. LEVENTERIS (CR)	0.153	---	0.153	21/08/2020	---	---	---	---	---	---	---	2019	---	---	---	1,878.16	0.122	0.224	50203000
2,160,524	0.670	0.0436	---	---	03/12/2018	23/11/1999	---	N. LEVENTERIS (PR)	0.28	---	0.28	21/08/2020	---	---	---	---	---	1722@0.252	---	2019	---	---	---	1,878.16	0.175	0.294	50203000
6,340,000	0.600	---	0.05	0.06	14/02/2020	02/12/2019	---	NAKAS MUSIC	1.7	---	1.7	21/08/2020	---	---	---	---	850@1.53	224@1.70	---	---	---	---	---	10,778.00	0.93	2.66	40401030
27,379,200	0.300	0.148	0.294	0.3654	03/07/2020	24/08/2018	---	CRETE PLASTICS SA (CR)	13.8	0.36 #	13.75	21/08/2020	13.8	13.8	13.8	13.8	8@13.80	35@13.95	---	---	792	3	10,929.60	377,832.96	8.55	14.9	50203015
255,494,534	3.00	0.22	0.286	0.613	16/04/2020	23/12/2015	---	PRODEA (CR)	7.9	---	7.9	21/08/2020	7.9	7.15	7.9	7.4	63@7.60	4@7.40	---	---	63	4	496.45	2,018,406.82	6.05	8.35	35102000
4,181,450	0.500	---	---	---	21/08/2000	05/03/2002	---	FLOUR MILLS SARANTOPOULOS SA	1.25	---	1.25	21/08/2020	---	---	---	---	---	445@1.30	---	---	---	---	---	5,226.81	1.15	3.3	45102020

## Exchange Traded Funds (ETFs)

853,597	---	---	---	---	15/06/2016	---	ALPHA ETF FTSE Athex Large Cap	15.04	-1.25	€	15.23	21/08/2020	15.14	15.04	15.14	15.04	15.108	10@15.05	---	---	---	---	697	4	10,530.60	---	11.3	24.5	12003
---------	-----	-----	-----	-----	------------	-----	--------------------------------	-------	-------	---	-------	------------	-------	-------	-------	-------	--------	----------	-----	-----	-----	-----	-----	---	-----------	-----	------	------	-------

## Surveillance

172,599,567	0.300	---	---	---	19/09/2016	5161	Forthnet (CR)	0.24	-2.44	€	0.246	21/08/2020	0.246	0.24	0.246	0.24	0.24	550@0.240	5000@0.246	---	---	6,900	5	1,658.10	41,423.90	0.186	0.448	15102015	
355,437,751	0.100	---	---	---	07/07/2010	21/09/2017	5160	FRIGOGLASS SA (CR)	0.099	1.54 #	0.0975	21/08/2020	0.093	0.093	0.099	0.099	0.098	7010@0.096	5423@0.099	---	---	43,990	12	4,289.04	35,188.34	0.09	0.28	50204000	
51,081,030	1.00	---	---	---	20/08/2007	03/09/2007	4912	LAVIPHARM SA (CR)	0.3	-3.23	€	0.31	21/08/2020	0.32	0.3	0.32	0.3	0.316	4472@0.300	910@0.318	---	---	4,305	4	1,361.50	15,324.31	0.208	0.338	20103015
16,838,928	0.500	---	---	---	21/05/2008	19/06/2020	5247	PASAL DEVELOPMENT S.A. (CR)	0.68	---	0.68	21/08/2020	0.68	0.68	0.69	0.69	0.68	37@0.690	---	---	---	---	2,868	5	1,951.24	11,450.47	0.4849	1.1713	35101010
65,326,268	0.530	---	---	---	04/07/2007	19/07/2006	4750	SATO SA (CR)	0.0265	---	0.0265	21/08/2020	---	---	---	---	---	4000@0.022	11070@0.032	---	---	---	---	---	1,731.15	0.0125	0.038	40202015	
13,191,620	0.620	---	---	---	04/08/2010	09/09/2002	5232	YALCO - CONSTANTINOU (CR)	0.0765	---	0.0765	21/08/2020	---	---	---	---	---	500@0.077	4000@0.092	---	---	---	---	---	1,009.16	0.05	0.0915	40202020	
13,000,000	1.00	---	---	---	01/08/2007	07/04/2000	5093	AKRITAS SA (CR)	0.32	---	0.32	21/08/2020	0.34	0.28	0.34	0.28	0.304	105@0.280	70@0.380	---	---	25	3	7.60	4,160.00	0.27	0.5	50101035	
185,373,016	0.300	---	---	---	02/07/2008	28/02/2011	4957	ANEK LINES SA (CR)	0.0405	---	0.0405	21/08/2020	---	---	---	---	---	40000@0.040	4000@0.045	---	---	---	---	---	7,827.05	0.03	0.072	40501015	
312,163	0.300	---	---	---	02/07/2008	28/02/2011	4959	ANEK LINES SA (PR, issue '90)	0.072	---	0.072	21/08/2020	---	---	---	---	---	---	---	---	---	---	---	---	7,827.05	0.058	0.072	40501015	
2,969,713	0.300	---	---	---	02/07/2008	28/02/2011	4958	ANEK LINES SA (PR, issue '96)	0.1	---	0.1	21/08/2020	---	---	---	---	---	---	---	---	---	---	---	---	7,827.05	0.08	0.1	40501015	
4,737,503	0.320	---	---	---	22/06/2005	22/09/2015	5115	VARANGIS AVEPE S.A. (CR)	0.128	---	0.128	21/08/2020	---	---	---	---	---	---	---	---	---	---	---	---	606.40	0.103	0.16	40202015	
6,330,002	0.300	---	---	---	25/06/2002	15/03/2019	5162	VARARESSOS (CR)	0.398	---	0.398	21/08/2020	---	---	---	---	---	---	3@0.320	---	2019	---	---	---	2,519.34	0.282	0.525	55101020	
17,579,754	4.16	---	---	---	18/08/2006	02/08/2010	---	BIOTER SA (CR)	0.096	---	0.096	21/08/2020	0.08	0.08	0.08	0.08	0.08	6800@0.080	2000@0.088	---	---	200	1	16.00	1,687.66	0.041	0.096	50101010	
4,968,600	2.88	---	---	---	01/07/1998	14/12/1998	5245	VIS SA (CR)	0.845	---	0.845	21/08/2020	---	---	---	---	---	100@0.845	---	---	2019	---	---	---	4,198.47	0.62	1.26	50203030	
15,878,748	0.480	---	---	---	10/07/2006	22/03/2004	5095	DOMIKI KRITIS SA (CR)	0.246	-8.89	€	0.27	21/08/2020	0.278	0.246	0.278	0.246	0.247	2000@0.250	1643@0.278	---	---	420	2	103.64	3,906.17	0.109	0.322	50101010
3,961,300	1.28	---	---	---	29/06/2004	03/08/2000	5248	DUROS SA (CR)	0.17	---	0.17	21/08/2020	---	---	---	---	---	1400@0.150	200@0.200	---	2019	---	---	---	673.42	0.125	0.27	40204020	
51,754,364	0.300	---	---	---	23/12/2003	24/01/2007	5197	SELECTED TEXT. IND. ASSOC (CR)	0.151	-10.65	€	0.169	21/08/2020	0.151	0.151	0.151	0.151	0.151	800@0.136	484@0.150	---	---	1,598	3	241.30	7,814.91	0.117	0.25	55101020
11,125,110	0.300	---	---	---	02/06/2010	06/11/2017	5178	EUROCONSULTANTS S.A. (CR)	0.278	---	0.278	21/08/2020	0.278	0.278	0.278	0.278	0.278	1602@0.224	4951@0.278	---	---	117	1	32.53	3,092.78	0.165	0.34	50205020	
156,961,721	0.300	---	---	---	30/05/2013	14/11/2007	5246	INTRALOT (CR)	0.129	---	0.129	21/08/2020	0.128	0.128	0.133	0.129	0.129	300@0.128	22385@0.133	---	---	184,680	34	23,780.12	20,248.06	0.072	0.41	40501020	
7,125,216	0.650	---	---	---	01/07/2005	14/12/1999	4955	KRE.KA SA (CR)	0.179	---	0.179	21/08/2020	0.144	0.144	0.144	0.144	0.144	---	1351@0.144	---	2019	40	1	5.76	1,275.41	0.058	0.24	45102010	
7,734,375	1.00	---	---	---	09/07/2007	07/01/2011	5112	LIVANIS SA (CR)	0.0505	---	0.0505	21/08/2020	---	---	---	---	---	---	4000@0.061	---	---	---	---	---	390.59	0.0505	0.116	40301030	
15,842,391	1.51	---	---	---	15/07/2009	12/05/2000	5141	BITROS HOLDING SA (CR)	0.136	---	0.136	21/08/2020	0.12	0.12	0.163	0.163	0.152	---	485@0.163	---	---	800	6	121.80	2,154.57	0.092	0.204	55102010	
119,596,817	0.040	---	---	---	15/07/2008	27/04/2017	5190	NIKAS SA (CR)	0.6	---	0.6	21/08/2020	---	---	---	---	---	---	400@0.720	---	---	---	---	---	71,758.09	0.4	0.6	45102020	
24,319,250	0.300	---	---	---	09/07/2002	04/07/2007	5165	PROODEFTIKH SA (CR)	0.194	---	0.194	21/08/2020	0.198	0.189	0.198	0.189	0.194	2000@0.162	2375@0.190	---	---	1,000	2	193.50	4,717.93	0.11	0.292	50101010	

Number of Outstanding Securities	Nominal Value	Dividends [1]			Date of Last Coupon		Note	Shares	Closing price	% change	Previous closing price/date	Open price	Price min	Price max	Last price	Avg price	Last Bid [7]	Last Ask [7]	P/E after tax	Year	Volume	Trades	Transactions Value[8]	Company Mkt Value (thou. €)	Year low	Year high	Sector[4]
10,186,667	1.35	---	---	---	24/06/2008	02/02/2016	4887	SIDMA SA (CR)	0.5	---	0.5	21/08/2020	---	---	---	---	510@0.452	600@0.520	---	---	---	---	---	5,093.33	0.192	0.57	55102010
766,000	1.00	---	---	---	01/07/2004	11/12/2012	5193	TRIA ALFA SA (CR)	3.96	---	3.96	21/08/2020	---	---	---	---	---	---	25.02	2019	---	---	---	4,126.06	1.44	3.96	55101020
245,000	1.00	---	---	---	19/07/2010	11/12/2012	5194	TRIA ALFA SA (PR)	4.46	---	4.46	21/08/2020	---	---	---	---	---	300@4.40	28.18	2019	---	---	---	4,126.06	0.9	4.46	55101020

## Suspension Status

20,255,805	0.300	---	---	---	22/08/2006	02/08/2010	5136	AXON HOLDING SA (CR)	0.058	---	0.058	28/04/2017	---	---	---	---	---	---	---	---	---	---	---	1,174.84	0.058	0.058	20101010
5,867,311	0.300	---	---	---	11/08/2010	28/04/2017	5243	DIONIC (CR)	0.11	---	0.11	30/06/2020	---	---	---	---	---	---	---	---	---	---	---	645.40	0.096	0.244	50205010
21,820,410	0.800	---	---	---	22/05/2008	02/08/2011	5174	EUROMEDICA SA (CR)	0.448	---	0.448	30/04/2018	---	---	---	---	---	---	---	---	---	---	---	9,775.54	0.448	0.448	20101010
66,948,210	0.300	---	---	---	22/09/2015	22/09/2015	5179	FOLLI FOLLIE (CR)	4.8	---	4.8	24/05/2018	---	---	---	---	---	---	---	---	---	---	---	321,351.41	4.48	4.8	40401030
12,417,000	0.310	---	0.0205	---	27/08/2019	28/08/2017	5233	MLS MULTIMEDIA SA (CR)	0.57	---	0.57	12/05/2020	---	---	---	---	---	---	---	---	---	---	---	7,077.69	0.475	1.51	10101015
33,301,715	0.320	---	---	---	27/06/2003	08/07/2009	5241	AEGEK (CR)	0.035	---	0.035	25/06/2020	---	---	---	---	---	---	---	---	---	---	---	1,165.56	0.0245	0.06	50101010
14,870,100	0.300	---	---	---	15/05/2008	26/09/2011	5130	ALPHA GRISSIN S.A. (CR)	0.014	---	0.014	13/04/2017	---	---	---	---	---	---	---	---	---	---	---	208.18	0.014	0.014	10102030
33,930,000	0.300	---	---	---	03/07/2006	30/05/2001	4865	BABIS VOVOS SA (CR)	0.304	---	0.304	30/03/2012	---	---	---	---	---	---	---	---	---	---	---	10,314.72	0.304	0.304	35101010
77,126,446	0.340	---	---	---	23/05/2005	18/08/2011	5206	G.E. DIMITRIOU (CR)	0.0125	---	0.0125	30/04/2019	---	---	---	---	---	---	---	---	---	---	---	964.08	0.0125	0.0125	40202020
6,000,000	0.600	---	---	---	13/06/2008	08/04/2004	5172	EUROBROKERS S.A. (CR)	0.008	---	0.008	27/04/2018	---	---	---	---	---	---	---	---	---	---	---	48.00	0.008	0.008	30302015
7,085,888	1.59	---	---	---	02/07/1996	06/09/2010	5216	ELVIEMEK (CR)	2.6	---	2.6	30/09/2019	---	---	---	---	---	---	---	---	---	---	---	18,423.31	2.6	2.6	35101010
25,179,640	0.600	---	---	---	08/08/1994	19/09/2000	5191	J.BOUTARIS & SON (CR)	0.026	---	0.026	01/10/2018	---	---	---	---	---	---	---	---	---	---	---	742.45	0.026	0.026	45101015
1,540,000	0.600	---	---	---	08/08/1994	19/09/2000	5192	J.BOUTARIS & SON (PR)	0.057	---	0.057	01/10/2018	---	---	---	---	---	---	---	---	---	---	---	742.45	0.057	0.057	45101015
24,619,524	0.500	---	---	---	10/10/1986	30/12/2002	4914	KERAMIA-ALLATINI (CR)	0.088	---	0.088	30/08/2012	---	---	---	---	---	---	---	---	---	---	---	2,166.52	0.088	0.088	35101010
31,543,600	0.420	---	---	---	19/07/2010	19/12/2018	5205	KRETA FARM SA (CR)	1.085	---	1.085	30/04/2019	---	---	---	---	---	---	---	---	---	---	---	34,224.81	1.085	1.085	45102020
23,935,280	0.300	---	---	---	29/06/2009	13/06/2000	5153	NAYTEMPORIKI PUBLISHING SA(CR)	0.107	---	0.107	02/10/2017	---	---	---	---	---	---	---	---	---	---	---	2,561.07	0.107	0.107	40301030
255,459,600	0.300	---	---	---	26/06/2000	03/12/2010	5101	NEL SA (CR)	0.07	---	0.07	31/08/2015	---	---	---	---	---	---	---	---	---	---	---	17,882.17	0.07	0.07	40501015
23,463,874	0.800	---	---	---	23/05/2003	21/12/1999	4918	NEORION SA (CR)	0.125	---	0.125	30/08/2012	---	---	---	---	---	---	---	---	---	---	---	2,932.98	0.125	0.125	50206030
17,175,776	0.370	---	---	---	14/07/2005	30/09/2003	---	PERSEUS SA (CR)	1.15	---	1.15	01/07/2020	---	---	---	---	---	327789@1.15	---	---	---	---	---	19,752.14	1.15	1.16	45102010
18,750,000	0.300	---	---	---	02/07/2001	31/12/2012	5154	PEGASUS PUBLISHING S.A. (CR)	0.089	---	0.089	02/10/2017	---	---	---	---	---	---	---	---	---	---	---	1,668.75	0.089	0.089	40301030
100,793,572	0.300	---	---	---	16/07/2009	11/02/2016	5110	TELETIPOS SA (CR)	0.06	---	0.06	07/03/2016	---	---	---	---	---	---	---	---	---	---	---	6,047.61	0.06	0.06	40301035
4,034,950	0.680	---	---	---	01/07/2005	30/12/2010	5171	CHATZIKRANIOTIS & SONS SA (CR)	0.14	---	0.14	27/04/2018	---	---	---	---	---	---	---	---	---	---	---	564.89	0.14	0.14	45102020

## Shares' Notes

Code	Note text
( )	- Adjusted dividends.
*	- Last adjusted closing price.
[1]	- Net dividends.
[2]	- The "Date of Last Coupon" for New listings refers to the date company's stocks started to trade in Athex
[3]	- The Company Market Value is referred to the number of outstanding shares
[4]	- Sectors codification can be found in Appendix A
[5]	- The Market Value refers to the total number of shares listed (including their several classes) in the exchange by the company.
[6]	- P/E greater than 100
[7]	- Last view of the Order Book before the end of the trading session
[8]	- All Blocks Methods' Transactions Value are included.
4750	- Transfer to the Under Surveillance Category from 8/4/2011.
4865	- Suspension of trading as of 2/4/2012.
4887	- Transfer to the Surveillance Category as of 10/4/2012.
4912	- Transfer to the Surveillance Category as of 31/7/2012.
4914	- Suspension of trading as of 31/8/2012.
4918	- Suspension of trading as of 31/8/2012.
4955	- Transfer to the Surveillance Category as from 5/4/2013.
4957	- Transfer to the Surveillance Category as from 5/4/2013.
4958	- Transfer to the Surveillance Category as from 5/4/2013.
4959	- Transfer to the Surveillance Category as from 5/4/2013.
5093	- Transfer to the Surveillance Category as of 8/4/2015.
5095	- Transfer to the Surveillance Category as from 09/04/2015.
5101	- Suspension of trading as of 1/9/2015.
5110	- Suspension of trading as of 08/03/2016.
5112	- Transfer to the Surveillance Category as of 15/04/2016.
5115	- Transfer to the Surveillance Category as of 15/04/2016.
5130	- Suspension of trading as of 18/04/2017.
5136	- Suspension of trading as of 02/05/2017.
5141	- Transfer to the Surveillance Category as of 10/05/2017.
5153	- Suspension of trading as of 03/10/2017.
5154	- Suspension of trading as of 03/10/2017.
5160	- Transfer to the Surveillance Category as of 15/04/2016.
5161	- Transfer to the Surveillance Category as of 25/11/2011.
5162	- Transfer to the Under Supervision Category as of 21/12/2009.
5165	- Transfer to the Surveillance Category as of 15/02/2018.
5171	- Suspension of trading as of 30/04/2018.
5172	- Suspension of trading as of 30/04/2018.
5174	- Suspension of trading as of 02/05/2018.
5178	- Transfer to the Surveillance Category as of 11/05/2018.
5179	- Suspension of trading as of 25/05/2018.
5190	- Transfer to the Surveillance Category as of 01/10/2018.
5191	- Suspension of trading as of 02/10/2018.
5192	- Suspension of trading as of 02/10/2018.
5193	- Transfer to the Surveillance Category as of 25/10/2018.
5194	- Transfer to the Surveillance Category as of 25/10/2018.
5197	- Transfer to the Surveillance Category as of 07/11/2018.
5205	- Suspension of trading as of 02/05/2019.
5206	- Suspension of trading as of 02/05/2019.
5216	- Suspension of trading as of 01/10/2019.
5232	- Transfer to the Under Surveillance Category from 08/04/2011.
5233	- Suspension of trading as of 13/05/2020.
5241	- Suspension of trading as of 26/06/2020.

---

## Shares' Notes

---

Code	Note text
5243	- Suspension of trading as of 01/07/2020.
5245	- Transfer to the Surveillance Category as of 09/07/2020.
5246	- Transfer to the Surveillance Category as of 09/07/2020.
5247	- Transfer to the Surveillance Category as from 5/4/2013.
5248	- Transfer to the Surveillance Category as of 05/08/2020.



## Securities Blocks Details

Securities	Block Volume	Price	Block Trade Value	Time of approval	Note
OTE (CR)	67,176	13.60	913,633.91	17:12:11	20

## Blocks Notes

9 - Method 6-1 / Special Fees

10 - Method 6-1 / Special Fees, SDS

14 - Method 6-3 / Settlement, Incomplete Buy and Sell

18 - Method 6-2 / SPOT 1

19 - Method 6-2 / SPOT 2

20 - Method 6-1 and Method 6-1 Same Day Settlement

21 - Other Pre-agreed

**Shares Rights Details**

Occured date	Exercise from	Exercise until	Trading until	Rights	Price min	Price max	Closing price	Last Bid	Last Ask	Volume	Trades	Transactions Value
--------------	---------------	----------------	---------------	--------	-----------	-----------	---------------	----------	----------	--------	--------	--------------------

No Rights Transactions.

---

**Securities Forced Sales**

---

Securities	Category of Security	Transactions Volume	Number of Trades	Transactions Value	Note
------------	----------------------	------------------------	---------------------	-----------------------	------

---

No Forced Transactions.

---

---

**Forced Sales Notes**

---

- 1 - Normal Forced Sale.
- 2 - Forced Sales of Fixed Registered Shares.
- 3 - Forced Sales of Remaining Stock Fractions.

**Forced Sales Registered Shares**

Securities	Start Date	End Date	Initial Volume	Remaining Volume	Date	Avg price (day)	Avg price (period)	Number of Trades	Transactions Volume	Transactions Value
------------	------------	----------	----------------	------------------	------	-----------------	--------------------	------------------	---------------------	--------------------

No Fixed Registered Shares Forced Sales.

**Forced Sales Notes**

According to Decision 1/380/04.05.2008 of the Hellenic Republic Capital Market Commission, the certificated registered shares that have not been deposited to the issuer for dematerialisation, will be auctioned in the Athens Exchange by the supervising issuer. Forced sales procedure is held according to Article 99A of the Athens Exchange Rulebook. The average price of the period is calculated by dividing the Total transactions value by the Total volume and includes all the transactions made until the current date.

## Exchange Traded Funds (ETFs) Characteristics

	Transactions Date (T)	Creation / Redemption	Units (T-1)	New Units (T-1)	Redemption Units (T-1)	Units (T) [1]	Fund Assets [2]	Net Unit Price	Dividend per Unit	Dividend Date
ALPHA ETF FTSE Athex Large Cap	24/08/2020	5,000	853,597	---	---	853,597	12,991,030.00	15.2192	0.81	01/07/2020

## ETFs Notes

[1] - Units (T) = Units (T-1) + New Units (T-1) - Redemption Units (T-1)

[2] - The Creation / Redemption Units of T-1 are included.

## Convertible Corporate Bonds - Regulated Market

Num Listed Bonds	Nominal price	Issue price	Today's Rate	Exp. Date	Duration (years)	Note	Coupon		Trading	Corporate Bonds	Price min	Price max	Closing price	Previous closing price/date	Volume	Transactions Value	Last order			ear min	Year max
							Common	Preferred									Price	Buy / Sell	Date		
171,246,551	0.30	0.30	1.00	11/10/2025	9	---	16	---	1	FORTHNET S.A. (Convertible)	---	---	---	---	---	---	90.0000	B	03/08/2020	100.0000	100.0000

## Corporate Bonds Notes

Transactions Volume = (Pieces) \* (Nominal Price). Transactions Value = (Pieces) \* (Nominal Price) \* (price %) + (Accrued interest).

The price of a Bond is stated as a percentage (%) of Bond's Nominal Price.

Nominal Price in Euros (€), except if it is noted differently.

## Non Convertible Corporate Bonds - Regulated Market

Num Listed Bonds	Nominal price	Issue price	Today's Rate	Exp. Date	Duration (years)	Note	Coupon		Trading	Corporate Bonds	Accrued Int.	Yield.T.Mat	Price min	Price max	Closing price	Previous closing price/date	Volume	Transactions Value	Last order		ear min	Year max		
							Common	Preferred											Price	Buy / Sell			Date	
175,000	1,000.00	1,000.00	3.40	26/07/2024	5	---	3	---	1	ATTICA HOLDINGS S.A. (Non Convertible)	2.8333	8.0600	84.8000	85.9700	85.0569	85.0000	21/08/2020	16,000	13,654.43	82.9000	B	24/08/2020	60.0000	100.0000
22,727	1,000.00	1,000.00	4.95	26/06/2023	5	---	5	---	1	B&F COMM. & GARM. INDUS. S.A. (Non Convertible)	8.3875	8.2580	88.2000	91.1000	90.2233	91.0750	21/08/2020	17,000	15,309.69	88.1400	B	24/08/2020	68.0000	94.9999
39,892,816	1.00	1.00	5.00	04/10/2021	5	---	16	---	1	HOUSEMARKET S.A. (Non Convertible)	0.0071	2.4230	102.1100	102.5000	102.3050	102.0000	19/08/2020	10,000	10,301.33	102.2100	B	24/08/2020	93.8736	105.1000
150,000	1,000.00	1,000.00	2.60	22/10/2026	7	---	2	---	1	TERNA ENERGY FINANCE S.A. (Non Convertible)	9.1000	2.6070	99.6500	99.6500	99.6500	99.9800	20/08/2020	40,000	40,224.00	99.6200	B	24/08/2020	84.4000	102.8000
200,000	1,000.00	1,000.00	3.60	12/03/2026	7	---	3	---	1	AEGEAN AIRLINES S.A. (Non Convertible)	16.7000	6.4020	87.0000	87.0000	87.0000	87.0000	21/08/2020	5,000	4,433.50	85.5500	B	24/08/2020	54.7313	107.3000
90,000	1,000.00	1,000.00	3.00	11/05/2023	5	---	5	---	1	CORAL A.E. (Non Convertible)	8.9167	2.4060	101.1000	101.1000	101.1000	101.1000	21/08/2020	6,000	6,119.50	101.1000	B	24/08/2020	89.4200	105.0000
120,000	1,000.00	1,000.00	3.95	04/04/2025	7	---	5	---	1	GEK TERNA S.A. (Non Convertible)	15.5806	2.7890	103.7000	104.7500	103.7000	103.6000	21/08/2020	94,000	99,585.57	103.7000	B	24/08/2020	91.0000	107.2000
320,000	1,000.00	1,000.00	3.40	21/07/2027	7	---	1	---	1	LAMDA DEVELOPMENT S.A. (Non Convertible)	3.4000	3.2950	100.4500	100.6000	100.5402	100.3000	21/08/2020	59,000	59,519.30	100.3500	B	24/08/2020	99.8932	100.8500
500,000	1,000.00	1,000.00	2.75	03/07/2027	7	---	1	---	1	GEK TERNA S.A. (Non Convertible)	4.1250	2.9120	98.8000	99.0000	98.9966	98.5500	20/08/2020	59,000	58,651.38	98.8000	B	24/08/2020	97.8469	100.0000

## Corporate Bonds Notes

Transactions Volume = (Pieces) \* (Nominal Price). Transactions Value = (Pieces) \* (Nominal Price) \* (price %) + (Accrued interest).

The price of a Bond is stated as a percentage (%) of Bond's Nominal Price.

Nominal Price in Euros (€), except if it is noted differently.

## Government Bonds

Number Listed Bonds	Nominal price	Today's Rate	Accrued Interest Calc	Exp. Date [1]	Duration (years)	Note	Coupons Date	Curr. coupon value	Trading Unit	Government Bonds	Price min	Price max	Closing price	Previous closing price/date	Volume	Transactions Value	Price	Last order Buy / Sell	Date
3,000,000	1,000.00	4.38	Actual/Actual	01/08/2022	5	---	01/08	4.38	1	GGB-FXD-010822-05Y-4.375-1.000	---	---	---	---	---	---	1.0000	B	28/11/2018
2,500,000	1,000.00	1.88	Actual/Actual	04/02/2035	15	---	04/02	1.88	1	GGB-FXD-040235-15Y-1.875-1.000	---	---	---	---	---	---	---	---	---
2,500,000	1,000.00	3.45	Actual/Actual	02/04/2024	5	---	02/04	3.45	1	GGB-FXD-020424-05Y-3.450-1.000	---	---	---	---	---	---	---	---	---
4,355,990,324	1.00	3.50	Actual/Actual	30/01/2023	5	---	01/02 - 31/01	3.50	1	GGB-FXD-300123-05Y-3.500-1.000	---	---	---	94.5720 13/07/2018	---	---	1.0000	B	28/11/2018
5,962,747,327	1.00	3.75	Actual/Actual	30/01/2028	10	---	/02 - 01/02 - 31/	3.75	1	GGB-FXD-300128-10Y-3.750-1.000	---	---	---	85.4610 13/07/2018	---	---	1.0000	B	28/11/2018
6,091,218,404	1.00	3.90	Actual/Actual	30/01/2033	15	---	/02 - 01/02 - 31/	3.90	1	GGB-FXD-300133-15Y-3.900-1.000	---	---	---	78.6730 13/07/2018	---	---	1.0000	B	28/11/2018
4,805,399,486	1.00	4.00	Actual/Actual	30/01/2037	19	---	/02 - 01/02 - 31/	4.00	1	GGB-FXD-300137-19Y-4.000-1.000	---	---	---	77.0370 13/07/2018	---	---	1.0000	B	28/11/2018
4,603,713,186	1.00	4.20	Actual/Actual	30/01/2042	24	---	/02 - 01/02 - 31/	4.20	1	GGB-FXD-300142-24Y-4.200-1.000	---	---	---	77.7640 13/07/2018	---	---	1.0000	B	28/11/2018
550,418,123	1.00	3.65	Actual/Actual	24/02/2023	11	---	24/02	3.65	1	GGB-FXD-240223-11Y-2.000-1.000	---	---	---	10.0000 22/06/2015	---	10.0000	B	11/07/2019	
445,007,576	1.00	3.65	Actual/Actual	24/02/2024	12	---	24/02	3.65	1	GGB-FXD-240224-12Y-2.000-1.000	---	---	---	10.0000 22/06/2015	---	---	---	---	---
423,674,226	1.00	3.65	Actual/Actual	24/02/2025	13	---	24/02	3.65	1	GGB-FXD-240225-13Y-2.000-1.000	---	---	---	10.0000 22/06/2015	---	---	---	---	---
212,292,153	1.00	3.65	Actual/Actual	24/02/2026	14	---	24/02	3.65	1	GGB-FXD-240226-14Y-2.000-1.000	---	---	---	10.0000 22/06/2015	---	---	---	---	---
160,621,352	1.00	3.65	Actual/Actual	24/02/2027	15	---	24/02	3.65	1	GGB-FXD-240227-15Y-2.000-1.000	---	---	---	10.0000 22/06/2015	---	---	---	---	---
183,244,055	1.00	3.65	Actual/Actual	24/02/2028	16	---	24/02	3.65	1	GGB-FXD-240228-16Y-2.000-1.000	---	---	---	10.0000 22/06/2015	---	---	---	---	---
164,802,894	1.00	3.65	Actual/Actual	24/02/2029	17	---	24/02	3.65	1	GGB-FXD-240229-17Y-2.000-1.000	---	---	---	10.0000 22/06/2015	---	---	---	---	---
165,460,943	1.00	3.65	Actual/Actual	24/02/2030	18	---	24/02	3.65	1	GGB-FXD-240230-18Y-2.000-1.000	---	---	---	10.0000 22/06/2015	---	---	---	---	---
129,007,241	1.00	3.65	Actual/Actual	24/02/2031	19	---	24/02	3.65	1	GGB-FXD-240231-19Y-2.000-1.000	---	---	---	10.0000 22/06/2015	---	---	---	---	---
126,192,683	1.00	3.65	Actual/Actual	24/02/2032	20	---	24/02	3.65	1	GGB-FXD-240232-20Y-2.000-1.000	---	---	---	10.0000 22/06/2015	---	---	---	---	---
146,905,168	1.00	3.65	Actual/Actual	24/02/2033	21	---	24/02	3.65	1	GGB-FXD-240233-21Y-2.000-1.000	---	---	---	10.0000 22/06/2015	---	---	---	---	---
154,475,606	1.00	3.65	Actual/Actual	24/02/2034	22	---	24/02	3.65	1	GGB-FXD-240234-22Y-2.000-1.000	---	---	---	10.0000 22/06/2015	---	---	---	---	---
144,429,441	1.00	3.65	Actual/Actual	24/02/2035	23	---	24/02	3.65	1	GGB-FXD-240235-23Y-2.000-1.000	---	---	---	10.0000 22/06/2015	---	---	---	---	---
166,211,676	1.00	3.65	Actual/Actual	24/02/2036	24	---	24/02	3.65	1	GGB-FXD-240236-24Y-2.000-1.000	---	---	---	10.0000 22/06/2015	---	---	---	---	---
145,461,669	1.00	3.65	Actual/Actual	24/02/2037	25	---	24/02	3.65	1	GGB-FXD-240237-25Y-2.000-1.000	---	---	---	10.0000 22/06/2015	---	---	---	---	---
146,941,087	1.00	3.65	Actual/Actual	24/02/2038	26	---	24/02	3.65	1	GGB-FXD-240238-26Y-2.000-1.000	---	---	---	10.0000 22/06/2015	---	---	---	---	---
135,115,612	1.00	3.65	Actual/Actual	24/02/2039	27	---	24/02	3.65	1	GGB-FXD-240239-27Y-2.000-1.000	---	---	---	10.0000 22/06/2015	---	---	---	---	---
141,909,637	1.00	3.65	Actual/Actual	24/02/2040	28	---	24/02	3.65	1	GGB-FXD-240240-28Y-2.000-1.000	---	---	---	10.0000 22/06/2015	---	---	---	---	---
136,788,720	1.00	3.65	Actual/Actual	24/02/2041	29	---	24/02	3.65	1	GGB-FXD-240241-29Y-2.000-1.000	---	---	---	10.0000 22/06/2015	---	---	---	---	---
163,643,410	1.00	3.65	Actual/Actual	24/02/2042	30	---	24/02	3.65	1	GGB-FXD-240242-30Y-2.000-1.000	---	---	---	10.0000 22/06/2015	---	---	---	---	---
4,000,000	1,000.00	3.88	Actual/Actual	12/03/2029	10	---	12/03	3.88	1	GGB-FXD-120329-10Y-3.875-1.000	---	---	---	---	---	100.0000	B	15/10/2019	
503,753	1,000.00	0.32	FLR Actual/360	16/09/2021	2	---	16/03 - 16/09	---	1	GGB-FLT-160921-02Y-0.319-1.000	---	---	---	---	---	---	---	---	---
3,000,000	1,000.00	3.38	Actual/Actual	15/02/2025	7	---	15/02	3.38	1	GGB-FXD-150225-07Y-3.375-1.000	---	---	---	---	---	---	---	---	---
250,250	1,000.00	2.90	Actual/Actual	20/03/2023	4	---	20/03	2.90	1	GGB-FXD-200323-04Y-2.900-1.000	---	---	---	---	---	---	---	---	---
964,000	1,000.00	3.25	Actual/Actual	20/03/2025	6	---	20/03	3.25	1	GGB-FXD-200325-06Y-3.250-1.000	---	---	---	---	---	---	---	---	---
2,100,000	1,000.00	3.55	Actual/Actual	20/03/2026	7	---	20/03	3.55	1	GGB-FXD-200326-07Y-3.550-1.000	---	---	---	---	---	---	---	---	---

## Government Bonds Notes

Transactions Volume = (Pieces) \* (Nominal Price). Transactions Value = (Pieces) \* (Nominal Price) \* (price %) + (Accrued interest).

The Value of current coupon for the issues with NV 0.01 euro refers to NV 100 euros

FLR: Floating Interest Rate.

[1] - The Expiration Date of the interest bearing period and the Date for coupon payment.



## Government Bonds

Number Listed Bonds	Nominal price	Today's Rate	Accrued Interest Calc	Exp. Date [1]	Duration (years)	Note	Coupons Date	Curr. coupon value	Trading Unit	Government Bonds	Price min	Price max	Closing price	Previous closing price/date	Volume	Transactions Value	Price	Last order Buy / Sell	Date
3,000,000	1,000.00	1.50	Actual/Actual	18/06/2030	10	---	18/06	1.50	1	GGB-FXD-180630-10Y-1.500-1.000	---	---	---	---	---	---	---	---	---
3,314,250	1,000.00	3.25	Actual/Actual	20/03/2050	30	---	20/03	3.25	1	GGB-FXD-200350-30Y-3.250-1.000	---	---	---	---	---	---	---	---	---
2,000,000	1,000.00	2.00	Actual/Actual	22/04/2027	7	---	22/04	2.00	1	GGB-FXD-220427-07Y-2.000-1.000	---	---	---	---	---	---	99.9000	B	22/04/2020
2,500,000	1,000.00	1.88	Actual/Actual	23/07/2026	7	---	23/07	1.88	1	GGB-FXD-230726-07Y-1.875-1.000	---	---	---	---	---	---	---	---	---

## Government Bonds Notes

Transactions Volume = (Pieces) \* (Nominal Price). Transactions Value = (Pieces) \* (Nominal Price) \* (price %) + (Accrued interest).

The Value of current coupon for the issues with NV 0.01 euro refers to NV 100 euros

FLR: Floating Interest Rate.

[1] - The Expiration Date of the interest bearing period and the Date for coupon payment.

## Treasury Bills &amp; Zero Coupon Government Bonds

Issue Date	13-Week Maturity									26-Week Maturity									52-Week Maturity								
	Exp. Date	Initial Rate	Num Listed Bonds	Nominal price	Issue price	Last Trade Price	Last Trade Date	Volume Traded	Note	Exp. Date	Initial Rate	Num Listed Bonds	Nominal price	Issue price	Last Trade Price	Last Trade Date	Volume Traded	Note	Exp. Date	Initial Rate	Num Listed Bonds	Nominal price	Issue price	Last Trade Price	Last Trade Date	Volume Traded	Note
13/09/2019	---	---	---	---	---	---	---	---	---	---	---	---	---	---	---	---	---	---	11/09/2020	0.29	1,000,000	1,000.00	997.05	---	---	---	---
13/12/2019	---	---	---	---	---	---	---	---	---	---	---	---	---	---	---	---	---	---	11/12/2020	0.07	1,000,000	1,000.00	999.30	---	---	---	---
13/03/2020	---	---	---	---	---	---	---	---	---	---	---	---	---	---	---	---	---	---	12/03/2021	0.24	600,000	1,000.00	1,000.00	---	---	---	---
12/06/2020	---	---	---	---	---	---	---	---	---	---	---	---	---	---	---	---	---	---	11/06/2021	0.25	1,600,000	1,000.00	997.49	---	---	---	---

Bonds in Circulation	Currency / Min nominal traded Value	Coupons Payment Date	Current Coupon Value	Note	Coupon	Trading Unit	Issue Date	Duration (years)	Today's Interest	A.I.C in days	Bonds	Last price of previous days		Last Outcry in Cash (euro)		Trades in Pieces	Life min	Life Max	
												Price	Buy / Sell	Price	Buy / Sell				
<b>Corporate Bonds in Foreign Currency and Euro</b>																			
103,746	GBP / 10	01/12	0.25	---	61	1	01/12/1930	98	2.5	360	National Mortgage Bank	2.27	05/02/1996	2.27	S	05/02/1996	---	2.27	2.27
0	GBP / 10	01/12	0.25	---	63	1	01/12/1928	100	2.5	360	National Mortgage Bank	---	---	---	---	---	---	---	---

## Government Bonds Notes

A.I.C: Accrued Interest Calculation base.

FLR: Floating Interest Rate.

The minimum tradeable Nominal Value for all Demeterialised Government Titles is 100 Euros.

(μτφρ-0)

Athex & ATHEXClear Members List

Member Name				Stock Market			Derivatives Market		ATHEXClear Member	
	Address	Phone	Fax	Market Member	Remote Member	Market Maker	Proprietary	Market Maker	General Clearing	Direct Clearing
A. SARRIS SECURITIES S.A.				a						
6, ΔΡΑΓΑΤΣΑΝΙΟΥ 6 ATHINA	2103367700									
AEONIC SECURITIES C.I.F. P.L.C.					a					
, ΛΑΪΟΥ 6, ΓΡ. 301B, ANNA COURT	35725337600									
ALPHA BANK A.E.									a	
103, AVE. ATHINON ATHINA	+30 2103436820	210-3436270								
40, STADIΟΥ STR ATHINA	(210)-3260000	(210)-3264116								
	(210)-3265546	(210)-3265811								
ALPHA FINANCE INVESTMENT SERVICES S.A.				a		a	a	a		a
5, ΜΕΡΛΙΝ 5 ATHINA	2103677400									
ARGUS STOCKBROKERS LTD				a	a		a			
25 , 25 ΛΕΩΦΟΡΟΣ ΔΗΜΟΣΘΕΝΗ ΣΕΒΕΡΗ	0035722717000									
ATLANTIC SECURITIES LIMITED				a						
37, ΠΡΟΔΡΟΜΟΥ 37	0035722445400									
ATLANTIC SECURITIES LTD					a					
, ΠΡΟΔΡΟΜΟΥ 37	0035722445400									
AXON SECURITIES S.A.				a			a			
48, ΣΤΑΔΙΟΥ 48 ATHINA	2103363800									
BETA SECURITIES S.A.				a		a	a			a
29 , Λ.ΑΛΕΞΑΝΔΡΑΣ 29 ATHINA	2106478930									
BNP PARIBAS SECURITIES SERVICES									a	
2, ΛΑΜΨΑΚΟΥ 2 ATHINA	2107468500									
BOFA SECURITIES EUROPE SA				a	a					
, 112 AVENUE KL?BER 75116	+33 153655555									
CAPITAL SECURITIES S.A.				a			a			
58, ΜΗΤΡΟΠΟΛΕΩΣ 58 ATHINA	2103369700									
CFS SECURITIES INVESTMENT SERVICES S.A.				a						
3, ΠΑΠΑΡΡΗΓΟΠΟΥΛΟΥ 3 ATHINA	2103360800									
CITIGROUP GLOBAL MARKETS EUROPE AG				a	a					
16, REUTERWEG 16 FRANKFURT	+49 691366-0									
CITIGROUP GLOBAL MARKETS LIMITED				a	a					
1, 33 CANADA SQUARE -CANARY WHARF	+44 02079864000									
CREDIT SUISSE SECURITIES (EUROPE) LIMITED				a	a					
1 , ONE CABOT SQUARE LONDON	+44 2078888888									
CREDIT SUISSE SECURITIES SOCIEDAD DE VALORES SA				a	a					
, CALLE AYALA 42, 3A PLANTA-B MADRID	+34917916000									
CYCLOS SECURITIES S.A.				a			a			a
39, ΠΑΝΕΠΙΣΤΗΜΙΟΥ 39 ATHINA	2103364300									
DEUTSCHE BANK S.A.					a					
1 , GREAT WINCHESTER STREET LONDON	+44 20 754 54209	00441133361437								
DYNAMIC SECURITIES S.A.				a			a			a
, ΤΡΑΛΛΕΩΝ 2 & Λ.ΣΥΓΓΡΟΥ 223 NEA SMYRNI	2103677700									
EUROBANK EQUITIES INVESTMENT FIRM S.A				a		a	a	a		a
, ΦΙΛΕΛΛΗΝΩΝ 10 & ΞΕΝΟΦΩΝΤΟΣ 13 ATHINA	2103720000									
EUROBANK S.A.									a	
, ΟΘΩΝΟΣ 8 ATHINA	2103337000									
EUROCORP INVESTMENT SERVICES S.A.				a			a			a
14, ΠΛ.ΦΙΛΙΚΗΣ ΕΤΑΙΡΕΙΑΣ 14 ATHINA	2107263600									
EUROTUST INVESTMENT FIRM SA				a						
113, ΣΕΒΑΣΤΟΥΠΟΛΕΩΣ 113 ATHINA	2103363100									
EUROXX SECURITIES S.A.				a		a	a	a		a
7, PALEOLOGOU CHALANDRI	+30 2106879400	210-6879401								
7, PALAIOLOGOU CHALANDRI	(210)-6879400	(210)-6879401								
G. A. PERVANAS SECURITIES- INVESTMENT SERVICES S.A.				a						
7-9, ΣΟΦΟΚΛΕΟΥΣ 7-9 ATHINA	2103727200									
GLOBAL CAPITAL SECURITIES & FINANCIAL SERVICES LTD				a	a					
50, ΛΑΡΧΙΕΠΙΣΚΟΠΟΥ ΜΑΚΑΡΙΟΥ Γ'50	0035722710710									
HELLENIC AMERICAN SECURITIES S.A.				a		a	a			a
27, ΑΝΔΡΕΑ ΠΑΠΑΝΔΡΕΟΥ 27 MAROUSI	2103311100									
HELLENIC BANK (INVESTMENTS) LTD					a					
, AVE.KYRIAKΟΥ MATSI 31 - PO BOX 24747 NICOSIA	+357 22500100	357 22500110								
HSBC FRANCE									a	
109-111, Λ.ΜΕΣΟΓΕΙΩΝ 109-111	2106960000									

Athex & ATHEXClear Members List

Member Name				Stock Market			Derivatives Market		ATHEXClear Member	
	Address	Phone	Fax	Market Member	Remote Member	Market Maker	Proprietary	Market Maker	General Clearing	Direct Clearing
INDEX SECURITIES S.A.				a						
6, ΔΡΑΓΑΤΣΑΝΙΟΥ 6 ΑΘΗΝΑ	2103213920									
J. CHR. MAVRIKIS SECURITIES S.A.				a						
5, ΣΟΦΟΚΛΕΟΥΣ 5 ΑΘΗΝΑ	2103216730									
KAPPA SECURITIES S.A.				a			a			
15, ΒΑΛΛΑΡΠΙΤΟΥ 15 ΑΘΗΝΑ	2103678600									
KARAMANOF SECURITIES & INVESTMENT SERVICES S.A.				a						
2, ΠΛ.ΑΓ.ΘΕΟΔΩΡΩΝ 2 ΑΘΗΝΑ	2103212947									
LAIKI FINANCIAL SERVICES LTD					a					
26, AVE. VYRONOS NICOSIA	357 22367367	357 22718567								
LEON DEPOLAS SECURITIES S.A.				a		a	a			
1, ΧΡΗΣΤΟΥ ΛΑΔΑ 1 ΑΘΗΝΑ	2103213276 -28									
MEGA EQUITY SECURITIES & FINANCIAL SERVICES PUBLIC LTD				a	a		a			
42-44, ΛΕΩΦ.ΓΡΙΒΑ ΔΙΓΓΕΝΗ 42-44	0035722711711									
MERIT SECURITIES S.A				a		a	a			a
5, ΣΟΦΟΚΛΕΟΥΣ 5 ΑΘΗΝΑ	2103671880									
MERRILL LYNCH INTERNATIONAL				a	a					
2, 2 KING EDWARD STREET LONDON	+44 20276281000									
N. CHRYSOCHOIDIS SECURITIES S.A.				a			a			a
7-9, ΣΟΦΟΚΛΕΟΥΣ 7-9 ΑΘΗΝΑ	2103213913									
NATIONAL BANK OF GREECE S.A.				a		a	a		a	
68, ΑΚΑΔΙΜΙΑΣ STR. ΑΘΗΝΑ	(210)-3328817	(210)-3328678								
86, ΑΙΟΛΟΥ STR. ΑΘΗΝΑ	(210)-3341000	(210)-3228187								
NATIONAL SECURITIES S.A.				a		a	a	a		
66, ΛΕΩΦ. ΚΗΦΙΣΙΑΣ 66 (ΚΤΗΡΙΟ Α) ΜΑΡΟΥΣΙ	2107720000									
NUNTIUS BROKERAGE AND INVESTMENT SERVICES S.A				a						
6, ΔΡΑΓΑΤΣΑΝΙΟΥ 6 ΑΘΗΝΑ	2103350599									
ONE PLUS CAPITAL LIMITED				a	a					
, 75 PRODRAMOU AVENUE NICOSIA 1307	35722873760									
OPTIMA BANK S.A.				a		a	a	a	a	
32, ΑΙΓΙΑΛΕΙΑΣ 32 & ΠΑΡΑΔΕΙΣΟΥ ΜΑΡΟΥΣΙ	2108173111									
PANTELAKIS SECURITIES S.A.				a		a	a	a		
57, ΕΘΝΙΚΗΣ ΑΝΤΙΣΤΑΣΕΩΣ 57, ΚΤΙΡΙΟ Β CHALANDRI	2106965000									
PEGASUS SECURITIES S.A				a			a			
17, ΒΑΛΛΑΡΠΙΤΟΥ 17 & ΑΜΕΡΙΚΗΣ ΑΘΗΝΑ	2103670700									
PIRAEUS BANK S.A.				a			a		a	
4, ΑΜΕΡΙΚΗΣ ΑΘΗΝΑ	+30 2103335000	210-3335079								
4, ΑΜΕΡΙΚΗΣ STR ΑΘΗΝΑ	(210)-3335918	(210)-3254207								
4, ΑΜΕΡΙΚΗΣ STR. ΑΘΗΝΑ	(210)-3335000	(210)-3335079								
PIRAEUS SECURITIES S. A.				a		a	a	a		a
10, ΣΤΑΔΙΟΥ 10 ΑΘΗΝΑ	2103354100									
PROCHOICE SECURITIES LTD				a	a					
57, ΛΕΩΦ.ΣΠΥΡΟΥ ΚΥΠΡΙΑΝΟΥ 57, ΑΚΙΝΗΤΑ Φ	035724661192									
SHARELINK SECURITIES & FINANCIAL SERVICES LTD				a	a		a			
6, HOUSE-ΘΕΟΤΟΚΗ 6 ΜΕΓΑΡΟ ΕΛΛΗΝΑ	+357 22554200									
SOCIETE GENERALE S.A.				a	a		a			
, 17 COURS VALMY, CEDEX	+157290504									
SOLIDUS SECURITIES S.A				a			a			a
64, ΛΟΥΙΖΗΣ ΡΙΑΝΚΟΥΡ 64 ΑΘΗΝΑ	2106900600									
ST. EM. LAVRENTAKIS SECURITIES S.A.				a			a			
7-9, ΣΟΦΟΚΛΕΟΥΣ 7-9 ΑΘΗΝΑ	2103213336									
THE CYPRUS INVESTMENT & SECURITIES CORPORATION LTD				a	a					
154, ΛΕΩΦ. ΛΕΜΕΣΟΥ 154	0035722121700									
UBS EUROPE SE				a	a					
, OPERNTURM, BOCKENHEIMER LANDSTRASSE 2-4	496921790									
UBS LIMITED					a					
1, FINSBURY AVENUE LONDON	+44 2075687135									

## List of Stocks under Market Making operations

Securities	Market Maker	Start Market Making	Stock Category
MLS MULTIMEDIA SA (CR)			Suspension Status
	PIRAEUS SECURITIES S. A.	01/08/2019	
ALPHA ETF FTSE Athex Large Cap			Exchange Traded Funds (ETFs)
	ALPHA FINANCE INVESTMENT SERVICES S.A.	02/01/1900	
	NATIONAL SECURITIES S.A.	02/01/1900	
ADMIE (IPTO) HOLDING S.A. (CR)			Main Market
	HELLENIC AMERICAN SECURITIES S.A.	09/03/2020	
	PIRAEUS SECURITIES S. A.	29/06/2017	
ALPHA BANK (CR)			Main Market
	ALPHA FINANCE INVESTMENT SERVICES S.A.	29/02/2016	
	EUROBANK EQUITIES INVESTMENT FIRM S.A	22/10/2006	
	HELLENIC AMERICAN SECURITIES S.A.	25/07/2014	
	LEON DEPOLAS SECURITIES S.A.	04/01/2016	
	MERIT SECURITIES S.A	03/09/2012	
	NATIONAL SECURITIES S.A.	02/01/1900	
	PIRAEUS SECURITIES S. A.	28/05/2009	
AS COMPANY SA (CR)			Main Market
	EUROBANK EQUITIES INVESTMENT FIRM S.A	01/04/2019	
ATTICA BANK S.A. (CR)			Main Market
	EUROBANK EQUITIES INVESTMENT FIRM S.A	11/11/2019	
	EUROXX SECURITIES S.A.	22/01/2016	
	PIRAEUS SECURITIES S. A.	20/09/2017	
ATTICA HOLDINGS (CR)			Main Market
	HELLENIC AMERICAN SECURITIES S.A.	28/12/2017	
AUTOHELLAS SA (CR)			Main Market
	ALPHA FINANCE INVESTMENT SERVICES S.A.	01/07/2019	
	EUROXX SECURITIES S.A.	02/07/2018	
AVAX S.A. (CR)			Main Market
	EUROBANK EQUITIES INVESTMENT FIRM S.A	14/12/2015	
AVE (CR)			Main Market
	EUROXX SECURITIES S.A.	05/06/2020	
BRIQ PROPERTIES (CR)			Main Market
	EUROBANK EQUITIES INVESTMENT FIRM S.A	09/09/2019	
BYTE COMPUTER SA (CR)			Main Market
	MERIT SECURITIES S.A	04/08/2008	
CC HBC AG (CR)			Main Market
	NATIONAL SECURITIES S.A.	02/01/1900	
	PIRAEUS SECURITIES S. A.	04/05/2015	
CENERGY HOLDINGS (CB)			Main Market
	ALPHA FINANCE INVESTMENT SERVICES S.A.	02/01/2016	
	EUROBANK EQUITIES INVESTMENT FIRM S.A	02/01/2016	
CNL CAPITAL (CR)			Main Market
	MERIT SECURITIES S.A	01/10/2018	
EKTER SA (CR)			Main Market
	EUROBANK EQUITIES INVESTMENT FIRM S.A	16/10/2017	
	LEON DEPOLAS SECURITIES S.A.	21/05/2018	
ELASTRON (CR)			Main Market
	LEON DEPOLAS SECURITIES S.A.	20/02/2017	
ELLAKTOR (CR)			Main Market
	ALPHA FINANCE INVESTMENT SERVICES S.A.	18/03/2019	
	EUROXX SECURITIES S.A.	24/09/2018	
	NATIONAL SECURITIES S.A.	02/01/1900	
	PIRAEUS SECURITIES S. A.	22/10/2018	
ELTON SA (CR)			Main Market
	BETA SECURITIES S.A.	03/09/2012	
	LEON DEPOLAS SECURITIES S.A.	01/04/2019	
ELVALHALCOR (CR)			Main Market
	ALPHA FINANCE INVESTMENT SERVICES S.A.	07/05/2018	
	EUROBANK EQUITIES INVESTMENT FIRM S.A	07/05/2018	
ENTERSOFT (CR)			Main Market
	EUROBANK EQUITIES INVESTMENT FIRM S.A	22/06/2020	
EUROBANK HOLDINGS (CR)			Main Market
	ALPHA FINANCE INVESTMENT SERVICES S.A.	09/01/2006	
	EUROBANK EQUITIES INVESTMENT FIRM S.A	01/06/2012	
	HELLENIC AMERICAN SECURITIES S.A.	25/07/2014	
	LEON DEPOLAS SECURITIES S.A.	30/11/2018	
	MERIT SECURITIES S.A	06/11/2017	
	NATIONAL SECURITIES S.A.	02/01/1900	
	PIRAEUS SECURITIES S. A.	28/09/2009	

## List of Stocks under Market Making operations

Securities	Stock Category
Market Maker	Start Market Making
<b>EUROPEAN RELIANCE INSUR. (CR)</b>	Main Market
EUROBANK EQUITIES INVESTMENT FIRM S.A	08/07/2019
PANTELAKIS SECURITIES S.A.	15/07/2019
<b>EYDAP S.A. (CR)</b>	Main Market
ALPHA FINANCE INVESTMENT SERVICES S.A.	27/01/2020
EUROBANK EQUITIES INVESTMENT FIRM S.A	10/06/2019
<b>FOURLIS (CR)</b>	Main Market
EUROBANK EQUITIES INVESTMENT FIRM S.A	01/12/2016
PIRAEUS SECURITIES S. A.	06/03/2017
<b>GEK TERNA (CR)</b>	Main Market
PIRAEUS SECURITIES S. A.	29/08/2019
<b>GR. SARANTIS S.A. (CR)</b>	Main Market
BETA SECURITIES S.A.	14/05/2012
EUROBANK EQUITIES INVESTMENT FIRM S.A	24/10/2016
<b>HELLENIC EXCHANGES-A.S.E. (CR)</b>	Main Market
HELLENIC AMERICAN SECURITIES S.A.	01/09/2014
NATIONAL SECURITIES S.A.	02/01/1900
PIRAEUS SECURITIES S. A.	04/05/2015
<b>HELLENIC PETROLEUM (CR)</b>	Main Market
HELLENIC AMERICAN SECURITIES S.A.	14/09/2015
PIRAEUS SECURITIES S. A.	20/03/2017
<b>IKTINOS HELLAS SA (CR)</b>	Main Market
ALPHA FINANCE INVESTMENT SERVICES S.A.	01/04/2019
EUROBANK EQUITIES INVESTMENT FIRM S.A	25/02/2019
NATIONAL SECURITIES S.A.	02/01/1900
<b>INTERCONTINENTAL (CR)</b>	Main Market
LEON DEPOLAS SECURITIES S.A.	03/06/2019
<b>INTRACOM HOLDINGS (CR)</b>	Main Market
LEON DEPOLAS SECURITIES S.A.	08/10/2018
<b>JUMBO SA (CR)</b>	Main Market
EUROBANK EQUITIES INVESTMENT FIRM S.A	25/05/2020
MERIT SECURITIES S.A	06/11/2017
PIRAEUS SECURITIES S. A.	06/03/2017
<b>KARAMOLEGOS SA (CR)</b>	Main Market
EUROXX SECURITIES S.A.	04/10/2019
<b>KLOUKINAS - LAPPAS SA (CR)</b>	Main Market
BETA SECURITIES S.A.	22/09/2014
<b>KRI-KRI S.A. (CR)</b>	Main Market
EUROBANK EQUITIES INVESTMENT FIRM S.A	07/05/2018
LEON DEPOLAS SECURITIES S.A.	16/01/2017
<b>LAMDA DEVELOPMENT SA (CR)</b>	Main Market
EUROBANK EQUITIES INVESTMENT FIRM S.A	08/12/2014
PANTELAKIS SECURITIES S.A.	06/11/2017
PIRAEUS SECURITIES S. A.	29/06/2017
<b>LAMPSA HOTEL SA (CR)</b>	Main Market
LEON DEPOLAS SECURITIES S.A.	16/01/2017
<b>MARFIN INVESTMENT GROUP (CR)</b>	Main Market
PIRAEUS SECURITIES S. A.	02/02/2009
<b>MOTOR OIL (CR)</b>	Main Market
EUROBANK EQUITIES INVESTMENT FIRM S.A	22/10/2006
HELLENIC AMERICAN SECURITIES S.A.	01/09/2014
LEON DEPOLAS SECURITIES S.A.	01/04/2019
MERIT SECURITIES S.A	25/02/2019
NATIONAL SECURITIES S.A.	02/01/1900
PIRAEUS SECURITIES S. A.	04/05/2015
<b>MYTILINEOS (CR)</b>	Main Market
ALPHA FINANCE INVESTMENT SERVICES S.A.	15/04/2019
EUROBANK EQUITIES INVESTMENT FIRM S.A	20/09/2017
MERIT SECURITIES S.A	25/02/2019
NATIONAL SECURITIES S.A.	02/01/1900
PIRAEUS SECURITIES S. A.	04/05/2015
<b>NATIONAL BANK (CR)</b>	Main Market
ALPHA FINANCE INVESTMENT SERVICES S.A.	09/01/2006
EUROBANK EQUITIES INVESTMENT FIRM S.A	22/10/2006
HELLENIC AMERICAN SECURITIES S.A.	25/07/2014
LEON DEPOLAS SECURITIES S.A.	20/05/2015
MERIT SECURITIES S.A	03/09/2012
NATIONAL SECURITIES S.A.	02/01/1900
PIRAEUS SECURITIES S. A.	08/09/2008

## List of Stocks under Market Making operations

Securities	Stock Category
Market Maker	Start Market Making
<b>OPAP (CR)</b>	Main Market
ALPHA FINANCE INVESTMENT SERVICES S.A.	09/01/2006
EUROBANK EQUITIES INVESTMENT FIRM S.A	22/10/2006
HELLENIC AMERICAN SECURITIES S.A.	25/07/2014
MERIT SECURITIES S.A	20/03/2017
NATIONAL SECURITIES S.A.	02/01/1900
PIRAEUS SECURITIES S. A.	04/05/2015
<b>OTE (CR)</b>	Main Market
ALPHA FINANCE INVESTMENT SERVICES S.A.	09/01/2006
EUROBANK EQUITIES INVESTMENT FIRM S.A	22/10/2006
HELLENIC AMERICAN SECURITIES S.A.	25/07/2014
LEON DEPOLAS SECURITIES S.A.	20/04/2015
MERIT SECURITIES S.A	20/03/2017
NATIONAL SECURITIES S.A.	02/01/1900
PIRAEUS SECURITIES S. A.	08/09/2008
<b>P.P.A. S.A. (CR)</b>	Main Market
EUROBANK EQUITIES INVESTMENT FIRM S.A	06/02/2019
<b>PAPOUTSANIS (CR)</b>	Main Market
ALPHA FINANCE INVESTMENT SERVICES S.A.	19/11/2018
BETA SECURITIES S.A.	25/11/2013
<b>PETROPOULOS PETROS (CR)</b>	Main Market
EUROBANK EQUITIES INVESTMENT FIRM S.A	01/04/2019
PANTELAKIS SECURITIES S.A.	16/03/2020
<b>PIRAEUS BANK (CR)</b>	Main Market
ALPHA FINANCE INVESTMENT SERVICES S.A.	15/04/2019
EUROBANK EQUITIES INVESTMENT FIRM S.A	22/10/2006
EUROXX SECURITIES S.A.	15/02/2016
HELLENIC AMERICAN SECURITIES S.A.	25/07/2014
LEON DEPOLAS SECURITIES S.A.	30/11/2018
MERIT SECURITIES S.A	16/09/2013
NATIONAL SECURITIES S.A.	02/01/1900
PIRAEUS SECURITIES S. A.	16/02/2009
<b>PLAISIO COMPUTERS SA (CR)</b>	Main Market
EUROBANK EQUITIES INVESTMENT FIRM S.A	02/03/2015
<b>PPC (CR)</b>	Main Market
ALPHA FINANCE INVESTMENT SERVICES S.A.	09/01/2006
EUROBANK EQUITIES INVESTMENT FIRM S.A	22/10/2006
HELLENIC AMERICAN SECURITIES S.A.	01/09/2014
MERIT SECURITIES S.A	06/11/2017
NATIONAL SECURITIES S.A.	02/01/1900
PIRAEUS SECURITIES S. A.	28/09/2009
<b>PROFILE SA (CR)</b>	Main Market
PANTELAKIS SECURITIES S.A.	01/07/2019
<b>QUEST HOLDINGS (CR)</b>	Main Market
BETA SECURITIES S.A.	26/03/2018
EUROBANK EQUITIES INVESTMENT FIRM S.A	28/01/2019
<b>SPIROY AGRICULTURE SA (CR)</b>	Main Market
EUROBANK EQUITIES INVESTMENT FIRM S.A	02/09/2019
<b>TERNA ENERGY (CR)</b>	Main Market
PIRAEUS SECURITIES S. A.	09/12/2019
<b>THRACE PLASTICS SA (CR)</b>	Main Market
ALPHA FINANCE INVESTMENT SERVICES S.A.	26/03/2018
EUROBANK EQUITIES INVESTMENT FIRM S.A	26/03/2018
<b>TITAN CEMENT (CB)</b>	Main Market
EUROBANK EQUITIES INVESTMENT FIRM S.A	06/11/2019
<b>VIOHALCO SA/NV (CB)</b>	Main Market
ALPHA FINANCE INVESTMENT SERVICES S.A.	11/03/2008
EUROBANK EQUITIES INVESTMENT FIRM S.A	04/03/2014
MERIT SECURITIES S.A	17/03/2014



Underlying Asset				Derivatives Market													
Price max	Price min	Closing price	change	Delivery Month	Open price	Price max	Price min	Last price	Closing price	Last Bid	Last Ask	Fixing price*	Life high	Life low	Trades	Volume	Open Interest
<b>FTSE/Athex Large Cap</b>				(Trade Unit: 1 Index Point x 2€, Cash Settlement)													
1,533.19	1,509.54	1,513.72	-0.20%	September 2020	1,524.00	1,526.50	1,509.00	1,512.50	1,512.50	---	---	---	1,598.75	---	109	493	3,146
				October 2020	1,518.00	1,518.00	1,514.00	1,514.00	1,514.00	---	---	---	1,519.25	---	3	41	15
				November 2020	---	---	---	---	1,524.50	---	---	---	---	---	---	---	---
				December 2020	---	---	---	---	1,526.75	---	---	---	---	---	---	---	---
				March 2021	---	---	---	---	1,534.50	---	---	---	---	---	---	---	---
				June 2021	---	---	---	---	1,542.00	---	---	---	---	---	---	---	---

Derivatives notes

Fixing prices and final open positions can be retrieved from the following path <http://www.helex.gr/el/web/guest/statistics-end-of-day-derivatives>

Underlying Asset				Derivatives Market														
Price max	Price min	Closing price	change	Delivery Month	Open price	Price max	Price min	Last price	Closing price	Last Bid	Last Ask	Fixing price*	Life high	Life low	Trades	Volume	Open Interest	
<b>ADMIE (IPTO) HOLDING S.A. (CR)</b>																		
(Contract Size: 100 Securities, Physical Delivery)																		
2.25	2.22	2.225	-4.30%	September 2020	2.24	2.24	2.22	2.23	2.23	---	---	---	2.47	---	33	181	2,909	
				December 2020	---	---	---	---	2.34	---	---	---	---	---	---	---	---	
				March 2021	---	---	---	---	2.35	---	---	---	---	---	---	---	---	
				June 2021	---	---	---	---	2.36	---	---	---	---	---	---	---	---	
<b>ALPHA BANK (CR)</b>																		
(Contract Size: 100 Securities, Physical Delivery)																		
0.5488	0.531	0.531	-1.67%	September 2020	0.540	0.548	0.532	0.535	0.535	---	---	---	0.742	---	171	3,143	88,526	
				December 2020	---	---	---	---	0.544	---	---	---	0.560	---	---	---	16	
				March 2021	---	---	---	---	0.546	---	---	---	---	---	---	---	---	
				June 2021	---	---	---	---	0.549	---	---	---	---	---	---	---	---	
<b>ATTICA BANK S.A. (CR)</b>																		
(Contract Size: 100 Securities, Physical Delivery)																		
0.1788	0.176	0.176	-0.34%	September 2020	---	---	---	---	0.177	---	---	---	---	---	---	---	---	
				December 2020	---	---	---	---	0.178	---	---	---	---	---	---	---	---	
				March 2021	---	---	---	---	0.179	---	---	---	---	---	---	---	---	
				June 2021	---	---	---	---	0.180	---	---	---	---	---	---	---	---	
<b>CC HBC AG (CR)</b>																		
(Contract Size: 100 Securities, Physical Delivery)																		
23.1	22.2	23.1	2.62%	September 2020	22.43	22.60	22.24	22.42	22.42	---	---	---	35.15	---	10	16	123	
				December 2020	---	---	---	---	22.66	---	---	---	---	---	---	---	---	
				March 2021	---	---	---	---	22.77	---	---	---	---	---	---	---	---	
				June 2021	---	---	---	---	22.89	---	---	---	---	---	---	---	---	
<b>CENERGY HOLDINGS (CB)</b>																		
(Contract Size: 100 Securities, Physical Delivery)																		
0.93	0.91	0.913	-1.93%	September 2020	---	---	---	---	0.932	---	---	---	1.04	---	---	---	2,070	
				December 2020	---	---	---	---	0.937	---	---	---	1.03	---	---	---	---	
				March 2021	---	---	---	---	0.942	---	---	---	---	---	---	---	---	
				June 2021	---	---	---	---	0.947	---	---	---	---	---	---	---	---	
<b>ELLAKTOR (CR)</b>																		
(Contract Size: 100 Securities, Physical Delivery)																		
1.134	1.099	1.109	-0.98%	September 2020	1.15	1.15	1.10	1.10	1.10	---	---	---	1.23	---	40	371	9,630	
				December 2020	---	---	---	---	1.13	---	---	---	1.06	---	---	---	---	
				March 2021	---	---	---	---	1.13	---	---	---	---	---	---	---	---	
				June 2021	---	---	---	---	1.14	---	---	---	---	---	---	---	---	
<b>EUROBANK HOLDINGS (CR)</b>																		
(Contract Size: 100 Securities, Physical Delivery)																		
0.4201	0.4088	0.415	-0.24%	September 2020	0.395	0.422	0.395	0.415	0.415	---	---	---	0.448	---	104	3,238	36,106	
				December 2020	0.412	0.412	0.412	0.412	0.412	---	---	---	0.435	---	1	25	211	
				March 2021	---	---	---	---	0.421	---	---	---	---	---	---	---	---	
				June 2021	---	---	---	---	0.423	---	---	---	---	---	---	---	---	

Derivatives notes

Fixing prices and final open positions can be retrieved from the following path <http://www.helex.gr/el/web/guest/statistics-end-of-day-derivatives>

Underlying Asset				Derivatives Market													
Price max	Price min	Closing price	change	Delivery Month	Open price	Price max	Price min	Last price	Closing price	Last Bid	Last Ask	Fixing price*	Life high	Life low	Trades	Volume	Open Interest
<b>EYDAP S.A. (CR)</b>				(Contract Size: 100 Securities, Physical Delivery)													
6.97	6.73	6.94	4.68%	September 2020	6.70	6.92	6.70	6.92	6.92	---	---	---	7.23	---	15	15	101
---	---	---	---	December 2020	---	---	---	---	6.67	---	---	---	6.62	---	---	---	---
---	---	---	---	March 2021	---	---	---	---	6.71	---	---	---	---	---	---	---	---
---	---	---	---	June 2021	---	---	---	---	6.74	---	---	---	---	---	---	---	---
<b>FOURLIS (CR)</b>				(Contract Size: 100 Securities, Physical Delivery)													
4.11	4.065	4.105	0.12%	September 2020	4.07	4.07	4.07	4.07	4.07	---	---	---	4.29	---	1	1	52
---	---	---	---	December 2020	---	---	---	---	4.13	---	---	---	---	---	---	---	---
---	---	---	---	March 2021	---	---	---	---	4.15	---	---	---	---	---	---	---	---
---	---	---	---	June 2021	---	---	---	---	4.17	---	---	---	---	---	---	---	---
<b>GEK TERNA (CR)</b>				(Contract Size: 100 Securities, Physical Delivery)													
6.08	5.88	5.88	-2.00%	September 2020	6.09	6.10	5.92	5.92	5.92	---	---	---	6.92	---	23	74	3,394
---	---	---	---	December 2020	---	---	---	---	6.04	---	---	---	---	---	---	---	---
---	---	---	---	March 2021	---	---	---	---	6.07	---	---	---	---	---	---	---	---
---	---	---	---	June 2021	---	---	---	---	6.10	---	---	---	---	---	---	---	---
<b>HELLENIC EXCHANGES-A.S.E. (CR)</b>				(Contract Size: 103 Securities, Physical Delivery)													
2.9	2.835	2.86	0.00%	September 2020	2.88	2.88	2.88	2.88	2.88	---	---	---	2.98	2.80	2	3	1,465
---	---	---	---	December 2020	---	---	---	---	2.88	---	---	---	---	---	---	---	---
---	---	---	---	March 2021	---	---	---	---	2.89	---	---	---	---	---	---	---	---
---	---	---	---	June 2021	---	---	---	---	2.91	---	---	---	---	---	---	---	---
<b>HELLENIC PETROLEUM (CR)</b>				(Contract Size: 100 Securities, Physical Delivery)													
5.29	5.21	5.22	-0.76%	September 2020	5.26	5.26	5.22	5.24	5.24	---	---	---	6.24	---	6	14	1,461
---	---	---	---	December 2020	---	---	---	---	5.29	---	---	---	---	---	---	---	---
---	---	---	---	March 2021	---	---	---	---	5.32	---	---	---	---	---	---	---	---
---	---	---	---	June 2021	---	---	---	---	5.35	---	---	---	---	---	---	---	---
<b>INTRACOM HOLDINGS (CR)</b>				(Contract Size: 100 Securities, Physical Delivery)													
0.637	0.621	0.621	-1.43%	September 2020	0.637	0.637	0.637	0.637	0.637	---	---	---	0.710	---	1	1	982
---	---	---	---	December 2020	---	---	---	---	0.634	---	---	---	---	---	---	---	---
---	---	---	---	March 2021	---	---	---	---	0.637	---	---	---	---	---	---	---	---
---	---	---	---	June 2021	---	---	---	---	0.641	---	---	---	---	---	---	---	---
<b>JUMBO SA (CR)</b>				(Contract Size: 100 Securities, Physical Delivery)													
15.52	14.95	14.95	-1.38%	September 2020	15.18	15.48	15.01	15.01	15.01	---	---	---	17.22	---	50	136	414
---	---	---	---	December 2020	---	---	---	---	15.26	---	---	---	16.64	---	---	---	---
---	---	---	---	March 2021	---	---	---	---	15.34	---	---	---	---	---	---	---	---
---	---	---	---	June 2021	---	---	---	---	15.41	---	---	---	---	---	---	---	---

Derivatives notes

Fixing prices and final open positions can be retrieved from the following path <http://www.helex.gr/el/web/guest/statistics-end-of-day-derivatives>

Underlying Asset				Derivatives Market													
Price max	Price min	Closing price	change	Delivery Month	Open price	Price max	Price min	Last price	Closing price	Last Bid	Last Ask	Fixing price*	Life high	Life low	Trades	Volume	Open Interest
<b>LAMDA DEVELOPMENT SA (CR)</b>				(Contract Size: 100 Securities, Physical Delivery)													
5.77	5.67	5.69	-0.18%	September 2020	5.71	5.73	5.68	5.73	5.73	---	---	---	6.60	---	4	8	2,139
				December 2020	---	---	---	---	5.74	---	---	---	---	---	---	---	---
				March 2021	---	---	---	---	5.77	---	---	---	---	---	---	---	---
				June 2021	---	---	---	---	5.80	---	---	---	---	---	---	---	---
<b>MARFIN INVESTMENT GROUP (CR)</b>				(Contract Size: 100 Securities, Physical Delivery)													
0.0527	0.0505	0.0505	-3.44%	September 2020	0.053	0.053	0.051	0.051	0.051	---	---	---	0.084	---	12	135	44,800
				December 2020	---	---	---	---	0.053	---	---	---	---	---	---	---	---
				March 2021	---	---	---	---	0.053	---	---	---	---	---	---	---	---
				June 2021	---	---	---	---	0.053	---	---	---	---	---	---	---	---
<b>MOTOR OIL (CR)</b>				(Contract Size: 100 Securities, Physical Delivery)													
11.62	11.4	11.55	1.32%	September 2020	11.50	11.50	11.41	11.45	11.45	---	---	---	15.38	---	9	10	627
				December 2020	---	---	---	---	11.48	---	---	---	---	---	---	---	---
				March 2021	---	---	---	---	11.53	---	---	---	13.27	---	---	---	2
				June 2021	---	---	---	---	11.59	---	---	---	---	---	---	---	---
<b>MYTILINEOS (CR)</b>				(Contract Size: 100 Securities, Physical Delivery)													
7.85	7.75	7.75	-0.39%	September 2020	7.81	7.84	7.74	7.75	7.75	---	---	---	8.21	---	30	73	5,700
				December 2020	---	---	---	---	7.83	---	---	---	---	---	---	---	---
				March 2021	---	---	---	---	7.87	---	---	---	---	---	---	---	---
				June 2021	---	---	---	---	7.91	---	---	---	---	---	---	---	---
<b>NATIONAL BANK (CR)</b>				(Contract Size: 100 Securities, Physical Delivery)													
1.167	1.127	1.127	-1.66%	September 2020	1.17	1.17	1.13	1.14	1.14	---	---	---	1.51	---	106	1,656	34,186
				December 2020	1.14	1.14	1.14	1.14	1.14	---	---	---	1.22	---	1	1	44
				March 2021	---	---	---	---	1.16	---	---	---	---	---	---	---	---
				June 2021	---	---	---	---	1.17	---	---	---	---	---	---	---	---
<b>OPAP (CR)</b>				(Contract Size: 100 Securities, Physical Delivery)													
7.9	7.7	7.7	-1.09%	September 2020	7.91	7.91	7.74	7.74	7.74	---	---	---	9.21	---	22	113	2,546
				December 2020	---	---	---	---	7.84	---	---	---	7.99	---	---	---	31
				March 2021	---	---	---	---	7.88	---	---	---	---	---	---	---	---
				June 2021	---	---	---	---	7.92	---	---	---	---	---	---	---	---
<b>OTE (CR)</b>				(Contract Size: 100 Securities, Physical Delivery)													
13.69	13.52	13.58	0.44%	September 2020	13.50	13.66	13.50	13.55	13.55	---	---	---	13.76	---	22	99	1,880
				December 2020	---	---	---	---	13.61	---	---	---	---	---	---	---	---
				March 2021	---	---	---	---	13.68	---	---	---	---	---	---	---	---
				June 2021	---	---	---	---	13.75	---	---	---	---	---	---	---	---

Derivatives notes

Fixing prices and final open positions can be retrieved from the following path <http://www.helex.gr/el/web/guest/statistics-end-of-day-derivatives>

Underlying Asset				Derivatives Market													
Price max	Price min	Closing price	change	Delivery Month	Open price	Price max	Price min	Last price	Closing price	Last Bid	Last Ask	Fixing price*	Life high	Life low	Trades	Volume	Open Interest
<b>P.P.A. S.A. (CR)</b>				(Contract Size: 100 Securities, Physical Delivery)													
16.3	16.04	16.22	-0.25%	September 2020	---	---	---	---	16.29	---	---	---	17.65	---	---	---	351
				December 2020	---	---	---	---	16.37	---	---	---	16.34	---	---	---	3
				March 2021	---	---	---	---	16.45	---	---	---	---	---	---	---	---
				June 2021	---	---	---	---	16.53	---	---	---	---	---	---	---	---
<b>PIRAEUS BANK (CR)</b>				(Contract Size: 100 Securities, Physical Delivery)													
1.259	1.234	1.245	0.40%	September 2020	1.25	1.26	1.24	1.24	1.24	---	---	---	1.75	---	58	677	11,733
				December 2020	---	---	---	---	1.25	---	---	---	1.28	---	---	---	21
				March 2021	---	---	---	---	1.25	---	---	---	---	---	---	---	---
				June 2021	---	---	---	---	1.26	---	---	---	---	---	---	---	---
<b>PPC (CR)</b>				(Contract Size: 100 Securities, Physical Delivery)													
3.802	3.766	3.78	-0.26%	September 2020	3.79	3.81	3.77	3.78	3.78	---	---	---	4.08	---	27	135	8,544
				December 2020	---	---	---	---	3.82	---	---	---	3.98	---	---	---	4
				March 2021	---	---	---	---	3.83	---	---	---	---	---	---	---	---
				June 2021	---	---	---	---	3.85	---	---	---	---	---	---	---	---
<b>TERNA ENERGY (CR)</b>				(Contract Size: 100 Securities, Physical Delivery)													
11.7	11.54	11.56	-0.52%	September 2020	11.72	11.81	11.60	11.60	11.60	---	---	---	12.05	---	5	23	2,175
				December 2020	---	---	---	---	11.70	---	---	---	11.62	---	---	---	---
				March 2021	---	---	---	---	11.76	---	---	---	---	---	---	---	---
				June 2021	---	---	---	---	11.81	---	---	---	---	---	---	---	---
<b>TITAN CEMENT (CB)</b>				(Contract Size: 100 Securities, Physical Delivery)													
11.26	11.06	11.2	0.18%	September 2020	11.21	11.25	11.15	11.20	11.20	---	---	---	12.30	---	7	24	1,670
				December 2020	---	---	---	---	11.25	---	---	---	---	---	---	---	---
				March 2021	---	---	---	---	11.31	---	---	---	---	---	---	---	---
				June 2021	---	---	---	---	11.37	---	---	---	---	---	---	---	---
<b>VIOHALCO SA/NV (CB)</b>				(Contract Size: 100 Securities, Physical Delivery)													
2.36	2.295	2.3	-1.50%	September 2020	2.32	2.32	2.29	2.29	2.29	---	---	---	2.55	---	4	8	2,138
				December 2020	---	---	---	---	2.35	---	---	---	---	---	---	---	---
				March 2021	---	---	---	---	2.36	---	---	---	---	---	---	---	---
				June 2021	---	---	---	---	2.37	---	---	---	---	---	---	---	---

Derivatives notes

Fixing prices and final open positions can be retrieved from the following path <http://www.helex.gr/el/web/guest/statistics-end-of-day-derivatives>

FTSE/Athex Large Cap

(Trade Unit: 1 Index Point x 2€ - Exercise Style: European, Cash Settlement)

Call Options																Put Options																
Exercise Price	September 2020							October 2020							Other Months		September 2020						October 2020						Other Months		Exercise Price	
	Open price	Price max	Price min	Last price	Closing price	Volume	Open Interest	Open price	Price max	Price min	Last price	Closing price	Volume	Open Interest	Volume	Open Interest	Open price	Price max	Price min	Last price	Closing price	Volume	Open Interest	Open price	Price max	Price min	Last price	Closing price	Volume	Open Interest		Volume
1,050	0.00	0.00	0.00	-	459.00	-	-	-	-	-	-	-	-	-	-	0.00	0.00	0.00	-	0.01	-	-	-	-	-	-	-	-	-	-	-	1,050
1,075	0.00	0.00	0.00	-	434.00	-	-	-	-	-	-	-	-	-	-	0.00	0.00	0.00	-	0.01	-	-	-	-	-	-	-	-	-	-	-	1,075
1,100	0.00	0.00	0.00	-	409.00	-	-	-	-	-	-	-	-	-	-	0.00	0.00	0.00	-	0.01	-	-	-	-	-	-	-	-	-	-	-	1,100
1,125	0.00	0.00	0.00	-	384.00	-	-	-	-	-	-	-	-	-	-	0.00	0.00	0.00	-	0.01	-	-	-	-	-	-	-	-	-	-	-	1,125
1,150	0.00	0.00	0.00	-	359.00	-	-	-	-	-	-	-	-	-	-	0.00	0.00	0.00	-	0.02	-	-	-	-	-	-	-	-	-	-	-	1,150
1,175	0.00	0.00	0.00	-	334.00	-	-	-	-	-	-	-	-	-	-	0.00	0.00	0.00	-	0.04	-	-	-	-	-	-	-	-	-	-	-	1,175
1,200	0.00	0.00	0.00	-	309.00	-	-	-	-	-	-	-	-	-	-	0.00	0.00	0.00	-	0.10	-	-	-	-	-	-	-	-	-	-	-	1,200
1,225	0.00	0.00	0.00	-	285.00	-	-	-	-	-	-	-	-	-	-	0.00	0.00	0.00	-	0.22	-	-	-	-	-	-	-	-	-	-	-	1,225
1,250	0.00	0.00	0.00	-	260.00	-	-	-	-	-	-	-	-	-	-	0.00	0.00	0.00	-	0.45	-	-	-	-	-	-	-	-	-	-	-	1,250
1,275	0.00	0.00	0.00	-	235.00	-	-	-	-	-	-	-	-	-	-	0.00	0.00	0.00	-	0.89	-	-	-	-	-	-	-	-	-	-	-	1,275
1,300	0.00	0.00	0.00	-	211.00	-	-	-	-	-	-	-	-	-	-	0.00	0.00	0.00	-	1.70	-	-	-	-	-	-	-	-	-	-	-	1,300
1,325	0.00	0.00	0.00	-	187.00	-	-	-	-	-	-	-	-	-	-	0.00	0.00	0.00	-	2.90	-	-	-	-	-	-	-	-	-	-	-	1,325
1,350	0.00	0.00	0.00	-	164.00	-	-	0.00	0.00	0.00	-	170.00	-	-	-	0.00	0.00	0.00	-	4.90	-	-	0.00	0.00	0.00	-	13.25	-	-	-	1,350	
1,375	0.00	0.00	0.00	-	142.00	-	-	0.00	0.00	0.00	-	150.00	-	-	-	0.00	0.00	0.00	-	7.80	-	-	0.00	0.00	0.00	-	18.00	-	-	-	1,375	
1,400	0.00	0.00	0.00	-	121.00	-	-	0.00	0.00	0.00	-	131.00	-	-	-	0.00	0.00	0.00	-	12.00	-	10	0.00	0.00	0.00	-	24.25	-	-	-	1,400	
1,425	0.00	0.00	0.00	-	102.00	-	-	0.00	0.00	0.00	-	114.00	-	-	-	0.00	0.00	0.00	-	17.50	-	-	0.00	0.00	0.00	-	31.50	-	-	-	1,425	
1,450	0.00	0.00	0.00	-	84.50	-	1	0.00	0.00	0.00	-	97.50	-	-	-	0.00	0.00	0.00	-	24.75	-	30	0.00	0.00	0.00	-	40.50	-	-	-	1,450	
1,475	0.00	0.00	0.00	-	68.50	-	-	0.00	0.00	0.00	-	83.00	-	-	-	0.00	0.00	0.00	-	34.00	-	82	0.00	0.00	0.00	-	50.50	-	-	-	1,475	
1,500	0.00	0.00	0.00	-	55.00	-	40	0.00	0.00	0.00	-	70.00	-	-	-	0.00	0.00	0.00	-	45.00	-	61	0.00	0.00	0.00	-	62.50	-	-	-	1,500	
1,525	0.00	0.00	0.00	-	43.00	-	61	0.00	0.00	0.00	-	58.50	-	-	-	50.00	0.00	50.00	52.00	52.00	40	151	0.00	0.00	0.00	-	76.00	-	-	-	1,525	
1,550	0.00	0.00	0.00	-	33.00	-	226	0.00	0.00	0.00	-	48.25	-	20	-	0.00	0.00	0.00	-	73.00	-	40	0.00	0.00	0.00	-	90.50	-	-	-	1,550	
1,575	0.00	0.00	0.00	-	25.00	-	21	0.00	0.00	0.00	-	39.50	-	-	-	0.00	0.00	0.00	-	90.00	-	20	0.00	0.00	0.00	-	107.00	-	-	-	1,575	
1,600	0.00	0.00	0.00	-	18.50	-	21	0.00	0.00	0.00	-	32.00	-	-	-	0.00	0.00	0.00	-	109.00	-	60	0.00	0.00	0.00	-	124.00	-	-	-	1,600	
1,625	0.00	0.00	0.00	-	13.50	-	-	0.00	0.00	0.00	-	25.75	-	-	-	0.00	0.00	0.00	-	128.00	-	20	0.00	0.00	0.00	-	143.00	-	-	-	1,625	
1,650	6.50	6.50	6.50	6.50	6.50	100	-	0.00	0.00	0.00	-	20.25	-	-	-	0.00	6.50	0.00	-	150.00	-	-	0.00	0.00	0.00	-	162.00	-	-	-	1,650	
1,675	0.00	0.00	0.00	-	6.70	-	-	0.00	0.00	0.00	-	16.00	-	-	-	0.00	0.00	0.00	-	172.00	-	-	0.00	0.00	0.00	-	183.00	-	-	-	1,675	
1,700	0.00	0.00	0.00	-	4.60	-	1	0.00	0.00	0.00	-	12.50	-	-	-	0.00	0.00	0.00	-	195.00	-	-	0.00	0.00	0.00	-	204.00	-	-	-	1,700	
1,725	0.00	0.00	0.00	-	3.10	-	-	-	-	-	-	-	-	-	-	0.00	0.00	0.00	-	218.00	-	-	-	-	-	-	-	-	-	-	1,725	
1,750	0.00	0.00	0.00	-	2.00	-	-	-	-	-	-	-	-	-	-	0.00	0.00	0.00	-	242.00	-	-	-	-	-	-	-	-	-	-	1,750	
1,775	0.00	0.00	0.00	-	1.30	-	-	-	-	-	-	-	-	-	-	0.00	0.00	0.00	-	266.00	-	-	-	-	-	-	-	-	-	-	1,775	
1,800	0.00	0.00	0.00	-	0.84	-	-	-	-	-	-	-	-	-	-	0.00	0.00	0.00	-	291.00	-	-	-	-	-	-	-	-	-	-	1,800	
1,825	0.00	0.00	0.00	-	0.53	-	-	-	-	-	-	-	-	-	-	0.00	0.00	0.00	-	315.00	-	-	-	-	-	-	-	-	-	-	1,825	
1,850	0.00	0.00	0.00	-	0.33	-	-	-	-	-	-	-	-	-	-	0.00	0.00	0.00	-	340.00	-	-	-	-	-	-	-	-	-	-	1,850	
1,875	0.00	0.00	0.00	-	0.20	-	-	-	-	-	-	-	-	-	-	0.00	0.00	0.00	-	365.00	-	-	-	-	-	-	-	-	-	-	1,875	
1,900	0.00	0.00	0.00	-	0.12	-	-	-	-	-	-	-	-	-	-	0.00	0.00	0.00	-	390.00	-	-	-	-	-	-	-	-	-	-	1,900	
1,925	0.00	0.00	0.00	-	0.07	-	-	-	-	-	-	-	-	-	-	0.00	0.00	0.00	-	415.00	-	-	-	-	-	-	-	-	-	-	1,925	

FTSE/Athex Large Cap

(Trade Unit: 1 Index Point x 2€ - Exercise Style: European, Cash Settlement)

Exercise Price	Call Options														Put Options														Exercise Price					
	September 2020							October 2020							Other Months		September 2020							October 2020							Other Months			
	Open price	Price max	Price min	Last price	Closing price	Volume	Open Interest	Open price	Price max	Price min	Last price	Closing price	Volume	Open Interest	Volume	Open Interest	Open price	Price max	Price min	Last price	Closing price	Volume	Open Interest	Open price	Price max	Price min	Last price	Closing price		Volume	Open Interest	Volume	Open Interest	
1,950	0.00	0.00	0.00	-	0.04	-	-	-	-	-	-	-	-	-	-	0.00	0.00	0.00	-	440.00	-	-	-	-	-	-	-	-	-	-	1,950			
1,975	0.00	0.00	0.00	-	0.02	-	-	-	-	-	-	-	-	-	-	0.00	0.00	0.00	-	465.00	-	-	-	-	-	-	-	-	-	-	1,975			
2,000	0.00	0.00	0.00	-	0.01	-	-	-	-	-	-	-	-	-	-	0.00	0.00	0.00	-	490.00	-	-	-	-	-	-	-	-	-	-	2,000			
2,050	0.00	0.00	0.00	-	0.01	-	-	-	-	-	-	-	-	-	-	0.00	0.00	0.00	-	539.00	-	-	-	-	-	-	-	-	-	-	2,050			
2,100	0.00	0.00	0.00	-	0.01	-	-	-	-	-	-	-	-	-	-	0.00	0.00	0.00	-	589.00	-	-	-	-	-	-	-	-	-	-	2,100			
2,150	0.00	0.00	0.00	-	0.01	-	-	-	-	-	-	-	-	-	-	0.00	0.00	0.00	-	639.00	-	-	-	-	-	-	-	-	-	-	2,150			
2,200	0.00	0.00	0.00	-	0.01	-	-	-	-	-	-	-	-	-	-	0.00	0.00	0.00	-	689.00	-	-	-	-	-	-	-	-	-	-	2,200			
2,250	0.00	0.00	0.00	-	0.01	-	-	-	-	-	-	-	-	-	-	0.00	0.00	0.00	-	739.00	-	-	-	-	-	-	-	-	-	-	2,250			
2,300	0.00	0.00	0.00	-	0.01	-	-	-	-	-	-	-	-	-	-	0.00	0.00	0.00	-	789.00	-	-	-	-	-	-	-	-	-	-	2,300			
2,350	0.00	0.00	0.00	-	0.01	-	-	-	-	-	-	-	-	-	-	0.00	0.00	0.00	-	839.00	-	-	-	-	-	-	-	-	-	-	2,350			
2,400	0.00	0.00	0.00	-	0.01	-	-	-	-	-	-	-	-	-	-	0.00	0.00	0.00	-	889.00	-	-	-	-	-	-	-	-	-	-	2,400			
2,450	0.00	0.00	0.00	-	0.01	-	-	-	-	-	-	-	-	-	-	0.00	0.00	0.00	-	939.00	-	-	-	-	-	-	-	-	-	-	2,450			
2,500	0.00	0.00	0.00	-	0.01	-	-	-	-	-	-	-	-	-	-	0.00	0.00	0.00	-	989.00	-	-	-	-	-	-	-	-	-	-	2,500			
2,550	0.00	0.00	0.00	-	0.01	-	-	-	-	-	-	-	-	-	-	0.00	0.00	0.00	-	1,039.00	-	-	-	-	-	-	-	-	-	-	2,550			
2,600	0.00	0.00	0.00	-	0.01	-	-	-	-	-	-	-	-	-	-	0.00	0.00	0.00	-	1,089.00	-	-	-	-	-	-	-	-	-	-	2,600			
Totals:						100	371						0	20	0	0											40	474			0	0	0	0
Number of Trades:							2							0	0													2				0	0	

ALPHA BANK (CR)

(Contract Size: 100 Securities, Exercise Style: American, Physical Delivery)

Call Options															Put Options																	
September 2020							October 2020							Other Months		September 2020							October 2020							Other Months		Exercise Price
Open price	Price max	Price min	Last price	Closing price	Volume	Open Interest	Open price	Price max	Price min	Last price	Closing price	Volume	Open Interest	Volume	Open Interest	Open price	Price max	Price min	Last price	Closing price	Volume	Open Interest	Open price	Price max	Price min	Last price	Closing price	Volume	Open Interest	Volume	Open Interest	
0.250	0.000	0.000	0.000	0.290	-	-	0.000	0.000	0.000	0.291	-	-	-	-	-	0.000	0.000	0.000	0.001	-	-	-	-	0.000	0.000	0.000	0.001	-	-	-	-	0.003
0.300	0.000	0.000	0.000	0.241	-	-	0.000	0.000	0.000	0.244	-	-	-	-	-	0.000	0.000	0.000	0.001	-	-	-	-	0.000	0.000	0.000	0.003	-	-	-	-	0.003
0.350	0.000	0.000	0.000	0.192	-	-	0.000	0.000	0.000	0.199	-	-	-	-	-	0.000	0.000	0.000	0.002	-	-	-	-	0.000	0.000	0.000	0.008	-	-	-	-	0.004
0.400	0.000	0.000	0.000	0.147	-	-	0.000	0.000	0.000	0.159	-	-	-	-	-	0.000	0.000	0.000	0.006	-	-	-	-	0.000	0.000	0.000	0.017	-	-	-	-	0.004
0.450	0.000	0.000	0.000	0.107	-	-	0.000	0.000	0.000	0.124	-	-	-	-	-	0.000	0.000	0.000	0.017	-	-	-	-	0.000	0.000	0.000	0.033	-	-	-	-	0.005
0.500	0.000	0.000	0.000	0.074	-	-	0.000	0.000	0.000	0.095	-	-	-	-	-	0.000	0.000	0.000	0.034	-	-	-	-	0.000	0.000	0.000	0.054	-	-	-	-	0.005
0.550	0.000	0.000	0.000	0.050	-	-	0.000	0.000	0.000	0.072	-	-	-	-	-	0.000	0.000	0.000	0.059	-	-	-	-	0.000	0.000	0.000	0.081	-	-	-	-	0.006
0.600	0.000	0.000	0.000	0.032	-	100	0.000	0.000	0.000	0.054	-	-	-	-	-	0.000	0.000	0.000	0.091	-	-	-	-	0.000	0.000	0.000	0.112	-	-	-	-	0.006
0.650	0.000	0.000	0.000	0.020	-	-	0.000	0.000	0.000	0.040	-	-	-	-	-	0.000	0.000	0.000	0.129	-	-	-	-	0.000	0.000	0.000	0.148	-	-	-	-	0.007
0.700	0.000	0.000	0.000	0.012	-	-	0.000	0.000	0.000	0.030	-	-	-	-	-	0.000	0.000	0.000	0.171	-	-	-	-	0.000	0.000	0.000	0.188	-	-	-	-	0.007
0.750	0.000	0.000	0.000	0.007	-	-	0.000	0.000	0.000	0.021	-	-	-	-	-	0.000	0.000	0.000	0.216	-	-	-	-	0.000	0.000	0.000	0.230	-	-	-	-	0.008
0.800	0.000	0.000	0.000	0.004	-	-	0.000	0.000	0.000	0.015	-	-	-	-	-	0.000	0.000	0.000	0.263	-	-	-	-	0.000	0.000	0.000	0.274	-	-	-	-	0.008
0.850	0.000	0.000	0.000	0.002	-	-	0.000	0.000	0.000	0.011	-	-	-	-	-	0.000	0.000	0.000	0.312	-	-	-	-	0.000	0.000	0.000	0.320	-	-	-	-	0.009
0.900	0.000	0.000	0.000	0.001	-	-	-	-	-	-	-	-	-	-	-	0.000	0.000	0.000	0.361	-	-	-	-	-	-	-	-	-	-	-	-	0.009
0.950	0.000	0.000	0.000	0.001	-	-	-	-	-	-	-	-	-	-	-	0.000	0.000	0.000	0.410	-	-	-	-	-	-	-	-	-	-	-	-	0.010
1.000	0.000	0.000	0.000	0.001	-	-	-	-	-	-	-	-	-	-	-	0.000	0.000	0.000	0.460	-	-	-	-	-	-	-	-	-	-	-	-	0.010
1.100	0.000	0.000	0.000	0.001	-	-	-	-	-	-	-	-	-	-	-	0.000	0.000	0.000	0.560	-	-	-	-	-	-	-	-	-	-	-	-	0.011
1.200	0.000	0.000	0.000	0.001	-	-	-	-	-	-	-	-	-	-	-	0.000	0.000	0.000	0.660	-	-	-	-	-	-	-	-	-	-	-	-	0.012
1.300	0.000	0.000	0.000	0.001	-	-	-	-	-	-	-	-	-	-	-	0.000	0.000	0.000	0.760	-	-	-	-	-	-	-	-	-	-	-	-	0.013
1.400	0.000	0.000	0.000	0.001	-	-	-	-	-	-	-	-	-	-	-	0.000	0.000	0.000	0.860	-	-	-	-	-	-	-	-	-	-	-	-	0.014
1.500	0.000	0.000	0.000	0.001	-	-	-	-	-	-	-	-	-	-	-	0.000	0.000	0.000	0.960	-	-	-	-	-	-	-	-	-	-	-	-	0.015
1.600	0.000	0.000	0.000	0.001	-	-	-	-	-	-	-	-	-	-	-	0.000	0.000	0.000	1.06	-	-	-	-	-	-	-	-	-	-	-	-	0.016
1.700	0.000	0.000	0.000	0.001	-	-	-	-	-	-	-	-	-	-	-	0.000	0.000	0.000	1.16	-	-	-	-	-	-	-	-	-	-	-	-	0.017
1.800	0.000	0.000	0.000	0.001	-	-	-	-	-	-	-	-	-	-	-	0.000	0.000	0.000	1.26	-	-	-	-	-	-	-	-	-	-	-	-	0.018
1.900	0.000	0.000	0.000	0.001	-	-	-	-	-	-	-	-	-	-	-	0.000	0.000	0.000	1.36	-	-	-	-	-	-	-	-	-	-	-	-	0.019
2.000	0.000	0.000	0.000	0.004	-	-	-	-	-	-	-	-	-	-	-	0.000	0.000	0.000	1.46	-	-	-	-	-	-	-	-	-	-	-	-	0.020
2.200	0.000	0.000	0.000	0.002	-	-	-	-	-	-	-	-	-	-	-	0.000	0.000	0.000	1.66	-	-	-	-	-	-	-	-	-	-	-	-	0.022
2.400	0.000	0.000	0.000	0.001	-	-	-	-	-	-	-	-	-	-	-	0.000	0.000	0.000	1.86	-	-	-	-	-	-	-	-	-	-	-	-	0.024
2.600	0.000	0.000	0.000	0.001	-	-	-	-	-	-	-	-	-	-	-	0.000	0.000	0.000	2.06	-	-	-	-	-	-	-	-	-	-	-	-	0.026
2.800	0.000	0.000	0.000	0.001	-	-	-	-	-	-	-	-	-	-	-	0.000	0.000	0.000	2.26	-	-	-	-	-	-	-	-	-	-	-	-	0.028
Totals:					0	100						0	0	0	0						0	0						0	0	0	0	0
Number of Trades:					0						0	0						0.00						0						0		



NATIONAL BANK (CR)

(Contract Size: 100 Securities, Exercise Style: American, Physical Delivery)

Call Options																Put Options																	
September 2020							October 2020							Other Months		September 2020						October 2020					Other Months		Exercise Price				
Exercise Price	Open price	Price max	Price min	Last price	Closing price	Volume	Open Interest	Open price	Price max	Price min	Last price	Closing price	Volume	Open Interest	Volume	Open Interest	Open price	Price max	Price min	Last price	Closing price	Volume	Open Interest	Open price	Price max	Price min	Last price	Closing price		Volume	Open Interest	Volume	Open Interest
0.600	0.000	0.000	0.000		0.551	-	-										0.000	0.000	0.000		0.001	-	-									0.006	
0.650	0.000	0.000	0.000		0.501	-	-										0.000	0.000	0.000		0.001	-	-									0.007	
0.700	0.000	0.000	0.000		0.451	-	-										0.000	0.000	0.000		0.001	-	-									0.007	
0.750	0.000	0.000	0.000		0.402	-	-										0.000	0.000	0.000		0.001	-	-									0.008	
0.800	0.000	0.000	0.000		0.353	-	-	0.000	0.000	0.000		0.362	-	-			0.000	0.000	0.000		0.002	-	-	0.000	0.000	0.000		0.010	-	-		0.008	
0.850	0.000	0.000	0.000		0.305	-	-	0.000	0.000	0.000		0.318	-	-			0.000	0.000	0.000		0.004	-	-	0.000	0.000	0.000		0.016	-	-		0.009	
0.900	0.000	0.000	0.000		0.260	-	-	0.000	0.000	0.000		0.278	-	-			0.000	0.000	0.000		0.008	-	-	0.000	0.000	0.000		0.025	-	-		0.009	
0.950	0.000	0.000	0.000		0.217	-	-	0.000	0.000	0.000		0.240	-	-			0.000	0.000	0.000		0.016	-	-	0.000	0.000	0.000		0.038	-	-		0.010	
1.000	0.000	0.000	0.000		0.178	-	-	0.000	0.000	0.000		0.205	-	-			0.000	0.000	0.000		0.026	-	-	0.000	0.000	0.000		0.052	-	-		0.010	
1.100	0.000	0.000	0.000		0.112	-	-	0.000	0.000	0.000		0.147	-	-			0.000	0.000	0.000		0.061	-	-	0.000	0.000	0.000		0.094	-	-		0.011	
1.200	0.000	0.000	0.000		0.066	-	-	0.000	0.000	0.000		0.102	-	-			0.000	0.000	0.000		0.114	-	-	0.000	0.000	0.000		0.149	-	-		0.012	
1.300	0.000	0.000	0.000		0.036	-	-	0.000	0.000	0.000		0.069	-	-			0.000	0.000	0.000		0.184	-	-	0.000	0.000	0.000		0.216	-	-		0.013	
1.400	0.000	0.000	0.000		0.018	-	10	0.000	0.000	0.000		0.046	-	-			0.000	0.000	0.000		0.267	-	450	0.000	0.000	0.000		0.292	-	-		0.014	
1.500	0.000	0.000	0.000		0.008	-	-	0.000	0.000	0.000		0.029	-	-			0.000	0.000	0.000		0.357	-	-	0.000	0.000	0.000		0.376	-	-		0.015	
1.600	0.000	0.000	0.000		0.004	-	-	0.000	0.000	0.000		0.019	-	-			0.000	0.000	0.000		0.453	-	-	0.000	0.000	0.000		0.465	-	-		0.016	
1.700	0.000	0.000	0.000		0.002	-	-	0.000	0.000	0.000		0.012	-	-			0.000	0.000	0.000		0.551	-	-	0.000	0.000	0.000		0.558	-	-		0.017	
1.800	0.000	0.000	0.000		0.001	-	-	0.000	0.000	0.000		0.007	-	-			0.000	0.000	0.000		0.650	-	-	0.000	0.000	0.000		0.654	-	-		0.018	
1.900	0.000	0.000	0.000		0.001	-	-										0.000	0.000	0.000		0.750	-	-									0.019	
2.000	0.000	0.000	0.000		0.001	-	-										0.000	0.000	0.000		0.850	-	-									0.020	
2.200	0.000	0.000	0.000		0.001	-	-										0.000	0.000	0.000		1.05	-	-									0.022	
2.400	0.000	0.000	0.000		0.001	-	-										0.000	0.000	0.000		1.25	-	-									0.024	
2.600	0.000	0.000	0.000		0.001	-	-										0.000	0.000	0.000		1.45	-	-									0.026	
2.800	0.000	0.000	0.000		0.001	-	-										0.000	0.000	0.000		1.65	-	-									0.028	
3.000	0.000	0.000	0.000		0.001	-	-										0.000	0.000	0.000		1.85	-	-									0.030	
3.200	0.000	0.000	0.000		0.001	-	-										0.000	0.000	0.000		2.05	-	-									0.032	
3.400	0.000	0.000	0.000		0.001	-	-										0.000	0.000	0.000		2.25	-	-									0.034	
3.600	0.000	0.000	0.000		0.001	-	-										0.000	0.000	0.000		2.45	-	-									0.036	
3.800	0.000	0.000	0.000		0.001	-	-										0.000	0.000	0.000		2.65	-	-									0.038	
4.000	0.000	0.000	0.000		0.001	-	-										0.000	0.000	0.000		2.85	-	-									0.040	
4.400	0.000	0.000	0.000		0.001	-	-										0.000	0.000	0.000		3.25	-	-									0.044	
Totals:						0	10						0	0	0	0	0					0	450							0	0	0	0
Number of Trades:						0							0	0	0	0							0.00							0	0		

OPAP (CR)

(Contract Size: 100 Securities, Exercise Style: American, Physical Delivery)

Exercise Price	Call Options														Put Options																	
	September 2020						October 2020						Other Months		September 2020						October 2020						Other Months		Exercise Price			
	Open price	Price max	Price min	Last price	Closing price	Volume	Open Interest	Open price	Price max	Price min	Last price	Closing price	Volume	Open Interest	Volume	Open Interest	Open price	Price max	Price min	Last price	Closing price	Volume	Open Interest	Open price	Price max	Price min	Last price	Closing price		Volume	Open Interest	Volume
4.000	0.000	0.000	0.000		3.80	-	-						-	-			0.000	0.000	0.000		0.001	-	-					-		-		
4.400	0.000	0.000	0.000		3.40	-	-						-	-			0.000	0.000	0.000		0.001	-	-					-	-			0.044
4.800	0.000	0.000	0.000		3.00	-	-						-	-			0.000	0.000	0.000		0.001	-	-					-	-			0.048
5.200	0.000	0.000	0.000		2.60	-	-						-	-			0.000	0.000	0.000		0.001	-	-					-	-			0.052
5.600	0.000	0.000	0.000		2.20	-	-	0.000	0.000	0.000		2.22	-	-			0.000	0.000	0.000		0.001	-	-	0.000	0.000	0.000	0.008	-	-			0.056
6.000	0.000	0.000	0.000		1.80	-	-	0.000	0.000	0.000		1.83	-	-			0.000	0.000	0.000		0.003	-	-	0.000	0.000	0.000	0.026	-	-			0.060
6.400	0.000	0.000	0.000		1.41	-	-	0.000	0.000	0.000		1.47	-	-			0.000	0.000	0.000		0.015	-	-	0.000	0.000	0.000	0.064	-	-			0.064
6.800	0.000	0.000	0.000		1.05	-	-	0.000	0.000	0.000		1.14	-	-			0.000	0.000	0.000		0.049	-	-	0.000	0.000	0.000	0.133	-	-			0.068
7.200	0.000	0.000	0.000		0.729	-	-	0.000	0.000	0.000		0.859	-	-			0.000	0.000	0.000		0.128	-	10	0.000	0.000	0.000	0.247	-	-			0.072
7.600	0.000	0.000	0.000		0.468	-	-	0.000	0.000	0.000		0.621	-	-			0.000	0.000	0.000		0.267	-	10	0.000	0.000	0.000	0.409	-	-			0.076
8.000	0.000	0.000	0.000		0.277	-	20	0.000	0.000	0.000		0.433	-	-			0.000	0.000	0.000		0.476	-	-	0.000	0.000	0.000	0.620	-	-			0.080
8.400	0.000	0.000	0.000		0.151	-	-	0.000	0.000	0.000		0.291	-	-			0.000	0.000	0.000		0.750	-	-	0.000	0.000	0.000	0.878	-	-			0.084
8.800	0.000	0.000	0.000		0.076	-	10	0.000	0.000	0.000		0.189	-	-			0.000	0.000	0.000		1.08	-	-	0.000	0.000	0.000	1.18	-	-			0.088
9.200	0.000	0.000	0.000		0.034	-	-	0.000	0.000	0.000		0.119	-	-			0.000	0.000	0.000		1.44	-	-	0.000	0.000	0.000	1.51	-	-			0.092
9.600	0.000	0.000	0.000		0.015	-	-	0.000	0.000	0.000		0.073	-	-			0.000	0.000	0.000		1.82	-	-	0.000	0.000	0.000	1.86	-	-			0.096
10.000	0.000	0.000	0.000		0.006	-	-	0.000	0.000	0.000		0.043	-	-			0.000	0.000	0.000		2.21	-	-	0.000	0.000	0.000	2.24	-	-			0.100
11.000	0.000	0.000	0.000		0.001	-	-	0.000	0.000	0.000		0.010	-	-			0.000	0.000	0.000		3.21	-	-	0.000	0.000	0.000	3.21	-	-			0.110
12.000	0.000	0.000	0.000		0.001	-	-	0.000	0.000	0.000		0.002	-	-			0.000	0.000	0.000		4.21	-	-	0.000	0.000	0.000	4.21	-	-			0.120
13.000	0.000	0.000	0.000		0.001	-	-	0.000	0.000	0.000		0.001	-	-			0.000	0.000	0.000		5.21	-	-	0.000	0.000	0.000	5.21	-	-			0.130
14.000	0.000	0.000	0.000		0.002	-	-						-	-			0.000	0.000	0.000		6.21	-	-					-	-			0.140
15.000	0.000	0.000	0.000		0.001	-	-						-	-			0.000	0.000	0.000		7.21	-	-					-	-			0.150
16.000	0.000	0.000	0.000		0.001	-	-						-	-			0.000	0.000	0.000		8.21	-	-					-	-			0.160
17.000	0.000	0.000	0.000		0.001	-	-						-	-			0.000	0.000	0.000		9.21	-	-					-	-			0.170
Totals:						0	30						0	0	0	0						0	20					0	0	0	0	
Number of Trades:						0							0		0							0.00						0		0		

OTE (CR)

(Contract Size: 100 Securities, Exercise Style: American, Physical Delivery)

Exercise Price	Call Options														Put Options																		
	September 2020						October 2020						Other Months		September 2020						October 2020						Other Months		Exercise Price				
	Open price	Price max	Price min	Last price	Closing price	Volume	Open Interest	Open price	Price max	Price min	Last price	Closing price	Volume	Open Interest	Volume	Open Interest	Open price	Price max	Price min	Last price	Closing price	Volume	Open Interest	Open price	Price max	Price min	Last price	Closing price		Volume	Open Interest	Volume	Open Interest
7.200	0.000	0.000	0.000		6.33	-	-										0.000	0.000	0.000		0.001	-	-										
7.600	0.000	0.000	0.000		5.93	-	-										0.000	0.000	0.000		0.001	-	-										0.076
8.000	0.000	0.000	0.000		5.53	-	-										0.000	0.000	0.000		0.001	-	-										0.080
8.400	0.000	0.000	0.000		5.13	-	-										0.000	0.000	0.000		0.001	-	-										0.084
8.800	0.000	0.000	0.000		4.73	-	-	0.000	0.000	0.000		4.75	-	-			0.000	0.000	0.000		0.001	-	-	0.000	0.000	0.000		0.001	-	-			0.088
9.200	0.000	0.000	0.000		4.33	-	-	0.000	0.000	0.000		4.35	-	-			0.000	0.000	0.000		0.001	-	-	0.000	0.000	0.000		0.001	-	-			0.092
9.600	0.000	0.000	0.000		3.93	-	-	0.000	0.000	0.000		3.95	-	-			0.000	0.000	0.000		0.001	-	-	0.000	0.000	0.000		0.003	-	-			0.096
10.000	0.000	0.000	0.000		3.54	-	-	0.000	0.000	0.000		3.56	-	-			0.000	0.000	0.000		0.001	-	-	0.000	0.000	0.000		0.008	-	-			0.100
11.000	0.000	0.000	0.000		2.54	-	-	0.000	0.000	0.000		2.60	-	-			0.000	0.000	0.000		0.007	-	5	0.000	0.000	0.000		0.049	-	-			0.110
12.000	0.000	0.000	0.000		1.61	-	-	0.000	0.000	0.000		1.74	-	-			0.000	0.000	0.000		0.067	-	-	0.217	0.217	0.217	0.217	0.217	11	0			0.120
13.000	0.000	0.000	0.000		0.836	-	10	0.000	0.000	0.000		1.05	-	-			0.000	0.000	0.000		0.297	-	-	0.000	0.000	0.000		0.487	-	-			0.130
14.000	0.000	0.000	0.000		0.342	-	60	0.000	0.000	0.000		0.563	-	-			0.000	0.000	0.000		0.803	-	-	0.000	0.000	0.000		1.00	-	-			0.140
15.000	0.000	0.000	0.000		0.109	-	5	0.310	0.310	0.310	0.310	0.310	11	-			0.000	0.000	0.000		1.57	-	-	0.000	0.000	0.000		1.72	-	-			0.150
16.000	0.000	0.000	0.000		0.026	-	-	0.000	0.000	0.000		0.118	-	-			0.000	0.000	0.000		2.49	-	-	0.000	0.000	0.000		2.56	-	-			0.160
17.000	0.000	0.000	0.000		0.005	-	-	0.000	0.000	0.000		0.046	-	-			0.000	0.000	0.000		3.48	-	-	0.000	0.000	0.000		3.50	-	-			0.170
18.000	0.000	0.000	0.000		0.001	-	-	0.000	0.000	0.000		0.016	-	-			0.000	0.000	0.000		4.48	-	-	0.000	0.000	0.000		4.48	-	-			0.180
19.000	0.000	0.000	0.000		0.001	-	-	0.000	0.000	0.000		0.005	-	-			0.000	0.000	0.000		5.48	-	-	0.000	0.000	0.000		5.48	-	-			0.190
Totals:						0	75						11	0	0	0						0	5					11	0	0	0		
Number of Trades:							0						2		0							0.00						2		0			

PIRAEUS BANK (CR)

(Contract Size: 100 Securities, Exercise Style: American, Physical Delivery)

Call Options															Put Options																	
September 2020							October 2020							Other Months		September 2020							October 2020							Other Months		Exercise Price
Open price	Price max	Price min	Last price	Closing price	Volume	Open Interest	Open price	Price max	Price min	Last price	Closing price	Volume	Open Interest	Volume	Open Interest	Open price	Price max	Price min	Last price	Closing price	Volume	Open Interest	Open price	Price max	Price min	Last price	Closing price	Volume	Open Interest	Volume	Open Interest	
0.700	0.000	0.000	0.000	0.541	-	-										0.000	0.000	0.000	0.001	-	-											0.007
0.750	0.000	0.000	0.000	0.491	-	-										0.000	0.000	0.000	0.001	-	-											0.008
0.800	0.000	0.000	0.000	0.442	-	-	0.000	0.000	0.000		0.447	-	-			0.000	0.000	0.000	0.001	-	-	0.000	0.000	0.000	0.000	0.005	-	-			0.008	
0.850	0.000	0.000	0.000	0.393	-	-	0.000	0.000	0.000		0.401	-	-			0.000	0.000	0.000	0.001	-	-	0.000	0.000	0.000	0.000	0.009	-	-			0.009	
0.900	0.000	0.000	0.000	0.345	-	-	0.000	0.000	0.000		0.358	-	-			0.000	0.000	0.000	0.003	-	-	0.000	0.000	0.000	0.000	0.015	-	-			0.009	
0.950	0.000	0.000	0.000	0.298	-	-	0.000	0.000	0.000		0.316	-	-			0.000	0.000	0.000	0.007	-	-	0.000	0.000	0.000	0.000	0.023	-	-			0.010	
1.000	0.000	0.000	0.000	0.254	-	-	0.000	0.000	0.000		0.276	-	-			0.000	0.000	0.000	0.012	-	-	0.000	0.000	0.000	0.000	0.033	-	-			0.010	
1.100	0.000	0.000	0.000	0.176	-	-	0.000	0.000	0.000		0.208	-	-			0.000	0.000	0.000	0.034	-	-	0.000	0.000	0.000	0.000	0.065	-	-			0.011	
1.200	0.000	0.000	0.000	0.114	-	-	0.000	0.000	0.000		0.152	-	-			0.000	0.000	0.000	0.072	-	-	0.000	0.000	0.000	0.000	0.108	-	-			0.012	
1.300	0.000	0.000	0.000	0.068	-	-	0.000	0.000	0.000		0.108	-	-			0.000	0.000	0.000	0.126	-	-	0.000	0.000	0.000	0.000	0.164	-	-			0.013	
1.400	0.000	0.000	0.000	0.039	-	14	0.000	0.000	0.000		0.075	-	-			0.000	0.000	0.000	0.197	-	-	0.000	0.000	0.000	0.000	0.231	-	-			0.014	
1.500	0.000	0.000	0.000	0.021	-	-	0.000	0.000	0.000		0.051	-	-			0.000	0.000	0.000	0.279	-	-	0.000	0.000	0.000	0.000	0.307	-	-			0.015	
1.600	0.000	0.000	0.000	0.010	-	-	0.000	0.000	0.000		0.034	-	-			0.000	0.000	0.000	0.369	-	-	0.000	0.000	0.000	0.000	0.390	-	-			0.016	
1.700	0.000	0.000	0.000	0.005	-	-	0.000	0.000	0.000		0.022	-	-			0.000	0.000	0.000	0.463	-	-	0.000	0.000	0.000	0.000	0.478	-	-			0.017	
1.800	0.000	0.000	0.000	0.002	-	-	0.000	0.000	0.000		0.014	-	-			0.000	0.000	0.000	0.561	-	-	0.000	0.000	0.000	0.000	0.570	-	-			0.018	
1.900	0.000	0.000	0.000	0.001	-	-										0.000	0.000	0.000	0.660	-	-						-	-			0.019	
2.000	0.000	0.000	0.000	0.001	-	-										0.000	0.000	0.000	0.760	-	-						-	-			0.020	
2.200	0.000	0.000	0.000	0.001	-	-										0.000	0.000	0.000	0.960	-	-						-	-			0.022	
2.400	0.000	0.000	0.000	0.001	-	-										0.000	0.000	0.000	1.16	-	-						-	-			0.024	
2.600	0.000	0.000	0.000	0.001	-	-										0.000	0.000	0.000	1.36	-	-						-	-			0.026	
2.800	0.000	0.000	0.000	0.001	-	-										0.000	0.000	0.000	1.56	-	-						-	-			0.028	
3.000	0.000	0.000	0.000	0.001	-	-										0.000	0.000	0.000	1.76	-	-						-	-			0.030	
3.200	0.000	0.000	0.000	0.001	-	-										0.000	0.000	0.000	1.96	-	-						-	-			0.032	
3.400	0.000	0.000	0.000	0.001	-	-										0.000	0.000	0.000	2.16	-	-						-	-			0.034	
3.600	0.000	0.000	0.000	0.001	-	-										0.000	0.000	0.000	2.36	-	-						-	-			0.036	
3.800	0.000	0.000	0.000	0.001	-	-										0.000	0.000	0.000	2.56	-	-						-	-			0.038	
4.000	0.000	0.000	0.000	0.001	-	-										0.000	0.000	0.000	2.76	-	-						-	-			0.040	
4.400	0.000	0.000	0.000	0.001	-	-										0.000	0.000	0.000	3.16	-	-						-	-			0.044	
4.800	0.000	0.000	0.000	0.001	-	-										0.000	0.000	0.000	3.56	-	-						-	-			0.048	
Totals:					0	14						0	0	0	0	0						0	0							0	0	
Number of Trades:					0							0	0	0									0.00							0	0	

PPC (CR)

(Contract Size: 100 Securities, Exercise Style: American, Physical Delivery)

Exercise Price	Call Options														Put Options																		
	September 2020							October 2020							Other Months		September 2020							October 2020							Other Months		Exercise Price
	Open price	Price max	Price min	Last price	Closing price	Volume	Open Interest	Open price	Price max	Price min	Last price	Closing price	Volume	Open Interest	Volume	Open Interest	Open price	Price max	Price min	Last price	Closing price	Volume	Open Interest	Open price	Price max	Price min	Last price	Closing price	Volume	Open Interest	Volume	Open Interest	
1.000	0.000	0.000	0.000		2.79	-	-						-	-			0.000	0.000	0.000		0.001	-	-					-	-			0.010	
1.100	0.000	0.000	0.000		2.69	-	-						-	-			0.000	0.000	0.000		0.001	-	-					-	-			0.011	
1.200	0.000	0.000	0.000		2.59	-	-						-	-			0.000	0.000	0.000		0.001	-	-					-	-			0.012	
1.300	0.000	0.000	0.000		2.49	-	-						-	-			0.000	0.000	0.000		0.001	-	-					-	-			0.013	
1.400	0.000	0.000	0.000		2.39	-	-						-	-			0.000	0.000	0.000		0.001	-	-					-	-			0.014	
1.500	0.000	0.000	0.000		2.29	-	-						-	-			0.000	0.000	0.000		0.001	-	-					-	-			0.015	
1.600	0.000	0.000	0.000		2.19	-	-						-	-			0.000	0.000	0.000		0.001	-	-					-	-			0.016	
1.700	0.000	0.000	0.000		2.09	-	-						-	-			0.000	0.000	0.000		0.003	-	-					-	-			0.017	
1.800	0.000	0.000	0.000		1.99	-	-						-	-			0.000	0.000	0.000		0.001	-	-					-	-			0.018	
1.900	0.000	0.000	0.000		1.89	-	-						-	-			0.000	0.000	0.000		0.001	-	-					-	-			0.019	
2.000	0.000	0.000	0.000		1.79	-	-						-	-			0.000	0.000	0.000		0.001	-	-					-	-			0.020	
2.200	0.000	0.000	0.000		1.59	-	-						-	-			0.000	0.000	0.000		0.001	-	-					-	-			0.022	
2.400	0.000	0.000	0.000		1.39	-	-						-	-			0.000	0.000	0.000		0.002	-	-					-	-			0.024	
2.600	0.000	0.000	0.000		1.19	-	-						-	-			0.000	0.000	0.000		0.001	-	-					-	-			0.026	
2.800	0.000	0.000	0.000		0.997	-	-	0.000	0.000	0.000		1.02	-	-			0.000	0.000	0.000		0.002	-	-	0.000	0.000	0.000		0.017	-	-			0.028
3.000	0.000	0.000	0.000		0.803	-	-	0.000	0.000	0.000		0.836	-	-			0.000	0.000	0.000		0.009	-	-	0.000	0.000	0.000		0.037	-	-			0.030
3.200	0.000	0.000	0.000		0.621	-	-	0.000	0.000	0.000		0.671	-	-			0.000	0.000	0.000		0.026	-	-	0.000	0.000	0.000		0.071	-	-			0.032
3.400	0.000	0.000	0.000		0.457	-	-	0.000	0.000	0.000		0.526	-	-			0.000	0.000	0.000		0.062	-	-	0.000	0.000	0.000		0.125	-	-			0.034
3.600	0.000	0.000	0.000		0.319	-	-	0.000	0.000	0.000		0.401	-	-			0.000	0.000	0.000		0.123	-	15	0.000	0.000	0.000		0.201	-	-			0.036
3.800	0.000	0.000	0.000		0.209	-	-	0.000	0.000	0.000		0.298	-	-			0.000	0.000	0.000		0.213	-	70	0.000	0.000	0.000		0.297	-	-			0.038
4.000	0.000	0.000	0.000		0.131	-	-	0.000	0.000	0.000		0.216	-	-			0.000	0.000	0.000		0.335	-	-	0.000	0.000	0.000		0.415	-	-			0.040
4.400	0.000	0.000	0.000		0.042	-	-	0.000	0.000	0.000		0.108	-	-			0.000	0.000	0.000		0.647	-	-	0.000	0.000	0.000		0.707	-	-			0.044
4.800	0.000	0.000	0.000		0.011	-	-	0.000	0.000	0.000		0.049	-	-			0.000	0.000	0.000		1.02	-	-	0.000	0.000	0.000		1.05	-	-			0.048
5.200	0.000	0.000	0.000		0.002	-	-	0.000	0.000	0.000		0.021	-	-			0.000	0.000	0.000		1.41	-	-	0.000	0.000	0.000		1.42	-	-			0.052
5.600	0.000	0.000	0.000		0.001	-	-	0.000	0.000	0.000		0.008	-	-			0.000	0.000	0.000		1.81	-	-	0.000	0.000	0.000		1.81	-	-			0.056
6.000	0.000	0.000	0.000		0.001	-	-	0.000	0.000	0.000		0.003	-	-			0.000	0.000	0.000		2.21	-	-	0.000	0.000	0.000		2.21	-	-			0.060
6.400	0.000	0.000	0.000		0.001	-	-						-	-			0.000	0.000	0.000		2.61	-	-					-	-			0.064	
Totals:						0	0						0	0	0	0						85						0	0	0	0		
Number of Trades:						0							0		0							0.00						0		0			

Lending Products	Underlying Title	Open Interest[5]	Multilateral Transactions[1]				Bilateral Transactions[2]		Stock Borrowing through OTC (volume)[3]	
			Volume(Offered)	Average Weighted	Transactions volume	Average Weighted	Transactions Volume	Average Weighted	Transactions Volume	
ADMIEBOR	ADMIE (IPTO) HOLDING S.A. (CR)	1,476	---	---	---	---	---	---	121,344	
AEGBOR	AEGEAN AIRLINES (CR)	4,756	---	---	2	2.65%	---	---	36,711	
ALPHABOR	ALPHA BANK (CR)	3,000	---	---	---	---	---	---	43,326,918	
ALMYBOR	ALUMIL (CR)	---	---	---	---	---	---	---	---	
TATTBOR	ATTICA BANK S.A. (CR)	13,603	---	---	---	---	---	---	370	
EEEBOR	CC HBC AG (CR)	3,674	---	---	---	---	---	---	70,546	
CENERBOR	CENERGY HOLDINGS (CB)	---	---	---	---	---	---	---	---	
ELLAKTORBOR	ELLAKTOR (CR)	16,000	---	---	---	---	---	---	237,898	
EUROBBOR	EUROBANK HOLDINGS (CR)	20,000	---	---	---	---	---	---	59,400,073	
EYDAPBOR	EYDAP S.A. (CR)	3,903	---	---	---	---	---	---	232,781	
FFGRPBOR	FOLLI FOLLIE (CR)	---	---	---	---	---	---	---	1,120,847	
FOYRKBOR	FOURLIS (CR)	8,100	---	---	---	---	---	---	43,892	
GEKTERNABOR	GEK TERNA (CR)	---	---	---	---	---	---	---	105,339	
SARBOR	GR. SARANTIS S.A. (CR)	---	---	---	---	---	200	7.00%	27,256	
EXAEBOR	HELLENIC EXCHANGES-A.S.E. (CR)	5,000	---	---	---	---	---	---	211,586	
ELPEBOR	HELLENIC PETROLEUM (CR)	1,200	---	---	---	---	---	---	145,943	
INTRKBOR	INTRACOM HOLDINGS (CR)	---	---	---	---	---	---	---	---	
BELABOR	JUMBO SA (CR)	44,868	---	---	---	---	---	---	118,598	
LAMDABOR	LAMDA DEVELOPMENT SA (CR)	---	---	---	---	---	---	---	13,000	
MIGBOR	MARFIN INVESTMENT GROUP (CR)	---	---	---	---	---	---	---	794,474	
MOHBOR	MOTOR OIL (CR)	4,000	---	---	---	---	---	---	404,170	
MYTILBOR	MYTILINEOS (CR)	1,500	---	---	---	---	---	---	101,742	
ETEBOR	NATIONAL BANK (CR)	11,780	---	---	947	3.26%	---	---	9,267,674	
OPAPBOR	OPAP (CR)	2,228	---	---	---	---	---	---	1,319,593	
HTOBOR	OTE (CR)	63,094	---	---	---	---	---	---	672,257	
PPABOR	P.P.A. S.A. (CR)	835	---	---	---	---	---	---	10,401	
TPEIRBOR	PIRAEUS BANK (CR)	14,500	---	---	---	---	---	---	15,899,144	
PLAISBOR	PLAISIO COMPUTERS SA (CR)	---	---	---	---	---	---	---	4,000	
PPCBOR	PPC (CR)	10,000	---	---	---	---	---	---	5,589,475	
QUALBOR	QUALITY & RELIABILITY SA (CR)	---	---	---	---	---	---	---	---	
TENERGYBOR	TERNA ENERGY (CR)	43,709	---	---	---	---	---	---	13,720	

## Stock Lending Notes

[1] - Multilateral contracts Lending or Borrowing as per Methods 8-1, 8-2 and 8-3-3 (According to ATHEX BoD Resolution No.17)

[2] - Bilateral Contracts Lending or Borrowing as per Methods 8-3-1 and 8-3-2 (According to ATHEX BoD Resolution No.20 )

[3] - The information concerning OTC Stock Borrowing Transactions is based on the statements of the Dematerialised Securities System (DSS) operators involved and refers to volumes that have been registered up until the previous working day.

[4] - Average Price (Volume weighted)

[5] - The Data concerning Open Interest before the start of trading session

Lending Products	Underlying Title	Open Interest[5]	Multilateral Transactions[1]				Bilateral Transactions[2]		Stock Borrowing through OTC (volume)[3]	
			Volume(Offered)	Average Weighted	Transactions volume	Average Weighted	Transactions Volume	Average Weighted	Transactions Volume	
TITCBOR	TITAN CEMENT (CB)	---	---	---	---	---	---	---	264,759	
VIOBOR	VIOHALCO SA/NV (CB)	400	---	---	---	---	---	---	---	

## Stock Lending Notes

[1] - Multilateral contracts Lending or Borrowing as per Methods 8-1, 8-2 and 8-3-3 (According to ATHEX BoD Resolution No.17)

[2] - Bilateral Contracts Lending or Borrowing as per Methods 8-3-1 and 8-3-2 (According to ATHEX BoD Resolution No.20 )

[3] - The information concerning OTC Stock Borrowing Transactions is based on the statements of the Dematerialised Securities System (DSS) operators involved and refers to volumes that have been registered up until the previous working day.

[4] - Average Price (Volume weighted)

[5] - The Data concerning Open Interest before the start of trading session

## Sectors codification for listed companies

12003 -	ETF	10101010	Computer Services
10101015	Software	10102030	Computer Hardware
15101010	Telecommunications Equipment	15102015	Telecommunications Services
20101010	Health Care Facilities	20101025	Health Care Services
20102010	Medical Equipment	20103015	Pharmaceuticals
30101010	Banks	30202000	Diversified Financial Services
30202010	Asset Managers & Custodians	30202015	Investment Services
30302010	Full Line Insurance	30302015	Insurance Brokers
35101010	Real Estate Holding and Development	35101015	Real Estate Services
35102000	Diversified REITs	35102030	Office REITs
40201040	Rental & Leasing Services: Consumer	40202010	Home Construction
40202015	Household Furnishings	40202020	Household Appliance
40203040	Electronic Entertainment	40203045	Toys
40204020	Clothing & Accessories	40301010	Entertainment
40301030	Publishing	40301035	Radio & TV Broadcasters
40401010	Diversified Retailers	40401020	Apparel Retailers
40401025	Home Improvement Retailers	40401030	Specialty Retailers
40501010	Airlines	40501015	Travel & Tourism
40501020	Casinos & Gambling	40501025	Hotels & Motels
45101015	Distillers & Vintners	45101020	Soft Drinks
45102010	Farming Fishing Ranching & Plantations	45102020	Food Products
45103010	Tobacco	45201010	Food Retailers & Wholesalers
45201020	Personal Products	50101010	Construction
50101030	Cement	50101035	Building Materials: Other
50202010	Electrical Components	50203000	Diversified Industrials
50203015	Plastics	50203030	Containers & Packaging
50204000	Machinery: Industrial	50204020	Machinery: Construction & Handling
50205010	Industrial Suppliers	50205020	Back Office Support HR & Consulting
50205030	Forms & Bulk Printing Services	50206015	Commercial Vehicles & Parts
50206030	Marine Transportation	50206060	Transportation Services
55101000	Diversified Materials	55101020	Textile Products
55102000	General Mining	55102010	Iron & Steel
55102015	Metal Fabricating	55102035	Aluminum
60101000	Integrated Oil & Gas	60101020	Oil Refining and Marketing
65101010	Alternative Electricity	65101015	Conventional Electricity
65102030	Water		





**ATHEX**  
Athens Stock Exchange

Λεωφ. Αθηνών 110 104 42 Αθήνα  
110, Athinon Ave. GR 104 42 Athens  
tel. (+30)210-33.66.800, fax (+30)210-33.66.101  
[www.athexgroup.gr](http://www.athexgroup.gr)