

20

**Ημερήσιο Δελτίο
Συναλλακτικής Δραστηριότητας**

Daily Official List
of Trading Activity

Tuesday, 19 May, 2020

Year: 141 Trading Day No: 91



ATHEXGROUP
Athens Exchange Group

Disclaimer:

Hellenic Exchanges-Athens Stock Exchange S.A endeavours to ensure that the data and other material ("Information") presented on the Daily Official List are accurate and complete, but it is not liable for any errors or omissions of data or /and for the accuracy, credibility, updating and completeness of the aforesaid information nor it has any liability arising directly or indirectly from the use of the above Information.

The Company is not liable for the accuracy of the data included in listed companies' announcements. Only the sender of such an announcement is fully and solely liable for any infringement of third party's rights from the content of such announcement. All contents of the Daily Official List are provided only for information purposes and do not constitute investment advice or solicitation to invest in securities or other products listed for trading on the Exchange.

You acknowledge and agree that the Company is the owner of any property rights related to any Information appearing on the Daily Official List including intellectual property rights copyright, trademarks, etc.

The above data are a property of the Hellenic Exchanges-Athens Exchange and are copyright protected. Users are forbidden to reproduce, modify, copy, sale, transmit or redistribute, by all reproduction means and methods, part or the whole of the above data, without reference to their source.

The commercial exploitation of these data is, also, forbidden by third parties. Hellenic Exchanges-Athens Exchange does not carry any responsibility, direct or indirect, derived from usage or accidental alteration of the above data when used by third parties.

Hellenic Exchanges – Athens Stock Exchange S.A.

110 Athinon Ave., 10442 Athens, Tel: (210) 33.66.800, Fax: (210) 32.13.938

www.athexgroup.gr

Thessalonica Stock Exchange Center (T.S.E.C)

16-18 Katouni Str., Thessalonica 546 25 Tel: (2310) 567.667, Fax: (2310) 530.545

Athex Members Guarantee Fund

14-16 Fidiou Str., Athens 106 78, Tel: (210) 33.04.682, Fax: (210) 33.04.155

Hellenic Republic Capital Market Commission

1 Kolokotroni Str. & 1 Stadiou Str., Athens 10562 Tel: (210) 33.77.100 Fax: (210) 33.77.173

Table of Contents

Section 1: Statistical Figures of Securities, Derivatives and Lending

Summary of Markets

Athex Indices

Analytic Figures for Athex Market's Boards and Categories

Trading Details by Athex Sectors and Financial Instruments (ETFs)

Top 10 best & worst performing Shares

Derivatives Summary

Section 2: Analytic Figures of Shares Transactions

Analytic Figures of Shares Transactions

Shares' Notes

Section 3: Figures of Securities Transactions

Securities Blocks Details

Shares Rights Details

Stock Borrowing

Securities Forced Sales

Forced Sales Registered Shares

Exchange Traded Funds (ETFs) Characteristics

Section 5: Bonds traded in Fixed Income Assets Market

Convertible Corporate Bonds - Regulated Market

Non Convertible Corporate Bonds - Regulated Market

Government Bonds

Treasury Bills & Zero Coupon Government Bonds

Government Bonds Traded with the Open Outcry Method

State Banks Bonds

Section 6: Additional Infos

Athex & ATHEXClear Members List

List of Stocks under Market Making operations

Section 7: Derivatives Market Analytic Figures

Index Futures

Stock Futures

Index Options

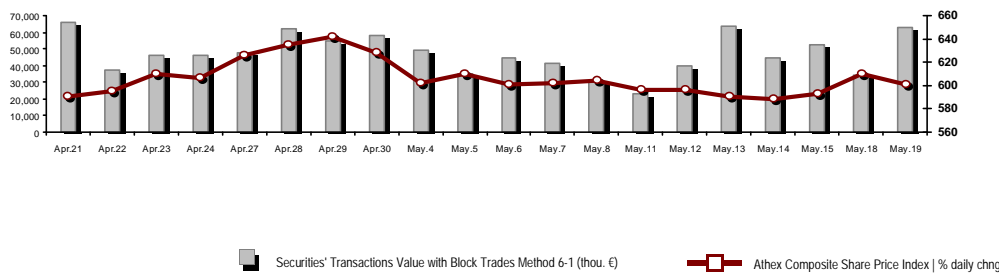
Stock Options

Stock Lending Analytic Figures

Appendix A: Sectors codification for listed companies

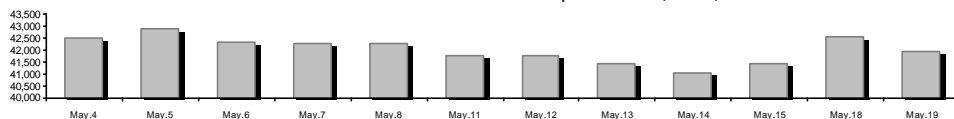
Summary of Markets

Athex Composite Share Price Index vs Shares and Derivatives Transactions Value

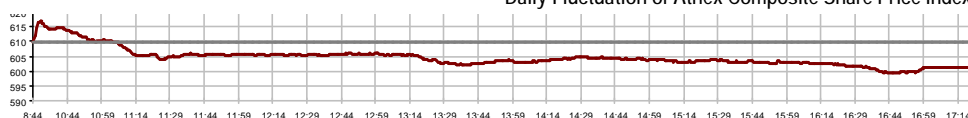


Athex Capitalisation (mill. €) **:	41,955.17		Derivatives Total Open Interest	197,500
Daily change: mill. € %	-589.96	-1.39%	in Index Futures % daily chng	3,151 -0.47%
Yearly Avg Capitalisation: mill. € % chng prev year Avg	50,561.96	-7.71%	in Stock Futures % daily chng	192,729 1.37%
Athex Composite Share Price Index % daily chng	601.16	-1.37%	in Index Options % daily chng	762 -2.81%
Athex Composite Share Price Index Capitalisation (mill. €)	36,786.06		in Stock Options % daily chng	858 2.51%
Daily change (mill. €)	-598.19			
Securities' Transactions Value with Block Trades Method 6-1 (t)	62,947.06		Derivatives Contracts Volume:	40,583
Daily change: %	28,863.81	84.69%	Daily change: pieces %	21,205 109.43%
YtD Avg Trans. Value: thou. € % chng prev year Avg	72,826.95	10.67%	YtD Avg Derivatives Contracts % chng prev year Avg	32,590 -22.21%
Blocks Transactions Value of Method 6-1 (thou. €)	8,765.50		Derivatives Trades Number:	2,630
Blocks Transactions Value of Method 6-2 & 6-3 (thou. €)	113.09		Daily change: number %	1,083 70.01%
Bonds Transactions Value (thou.€)	526.66		YtD Avg Trades number % chng prev year Avg	2,745 -3.65%
Securities' Transactions Volume with Block Trades Method 6-1 (th	77,015.15		Lending Total Open Interest	315,664
Daily change: thou. pieces %	48,856.95	173.51%	Daily change: pieces %	16,346 5.46%
YtD Avg Volume: % chng prev year Avg	41,331.85	30.19%	Lending Volume (Multilateral/Bilateral)	66,479
Blocks Transactions Volume of Method 6-1 (thou. Pieces)	18,800.54		Daily change: pieces %	48,546
Blocks Transactions Volume of Method 6-2 & 6-3 (thou. Pieces)	10.43		Multilateral Lending	66,479
Bonds Transactions Volume	550,184		Bilateral Lending	0
Securities' Trades Number with Block Trades Method 6-1	40,089		Lending Trades Number:	11
Daily change: number %	16,371	69.02%	Daily change: %	2
YtD Avg Trades number % chng prev year Avg	35,542	30.92%	Multilateral Lending Trades Number	11
Number of Blocks Method 6-1	12		Bilateral Lending Trades Number	0
Number of Blocks Method 6-2 & 6-3	1			
Number of Bonds Transactions	72			

Athex Capitalisation (mill. €) **



Daily Fluctuation of Athex Composite Share Price Index



Athex Composite Share Price Index at 18/05/2020

Daily Fluctuation of Athex Composite Share Price Index at 19/05/2020

Athex Indices

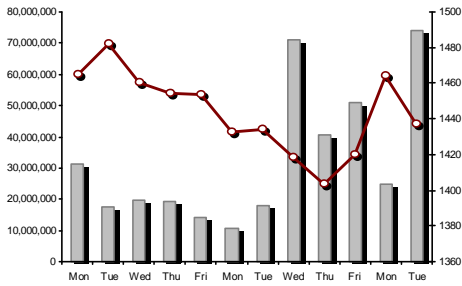
Index name	19/05/2020	18/05/2020	pts.	%	Min	Max	Year min	Year max	Year change
Athex Composite Share Price Index	601.16 €	609.52	-8.36	-1.37%	599.31	616.73	469.55	949.20	-34.42% €
FTSE/Athex Large Cap	1,436.74 €	1,463.99	-27.25	-1.86%	1,431.36	1,480.81	1,135.79	2,371.26	-37.48% €
FTSE/Athex Mid Cap Index	827.97 €	833.63	-5.66	-0.68%	826.34	842.08	659.09	1,298.86	-30.72% €
FTSE/ATHEX-CSE Banking Index	205.95 €	218.39	-12.44	-5.70%	204.02	227.03	199.24	673.55	-69.26% €
FTSE/ATHEX High Dividend Yield Index	2,262.78 €	2,266.10	-3.32	-0.15%	2,245.65	2,284.99	1,730.40	3,015.23	-23.07% €
FTSE/ATHEX Global Traders Index Plus	1,683.01 #	1,677.43	5.58	0.33%	1,668.48	1,693.47	1,269.53	2,435.50	-27.42% €
FTSE/ATHEX Global Traders Index	1,923.96 #	1,923.56	0.40	0.02%	1,911.47	1,940.47	1,458.31	2,560.38	-22.50% €
FTSE/ATHEX Mid & Small Cap Factor-Weighted Ind	2,306.65 €	2,316.95	-10.30	-0.44%	2,298.32	2,327.37	2,028.59	3,205.70	-22.48% €
ATHEX Select Index Plus	2,217.60 €	2,246.57	-28.97	-1.29%	2,215.88	2,273.30	1,698.34	3,182.42	-26.02% €
ATHEX Select Index	2,276.69 €	2,282.06	-5.37	-0.24%	2,269.16	2,310.23	1,734.15	3,581.16	-30.44% €
ATHEX Mid & SmallCap Price Index	4,819.25 #	4,790.21	29.04	0.61%	4,783.67	4,833.52	3,964.16	6,324.97	-18.83% €
FTSE/Athex Market Index	357.14 €	363.73	-6.59	-1.81%	355.85	367.82	282.92	587.56	-37.21% €
FTSE Med Index	4,025.17 #	3,839.07	186.10	4.85%			3,062.99	5,342.28	-19.16% €
Athex Composite Index Total Return Index	987.64 €	1,001.37	-13.73	-1.37%	984.60	1,013.21	770.25	1,557.05	-33.96% €
FTSE/Athex Large Cap Total Return	2,151.85 €	2,192.66	-40.81	-1.86%			1,760.89	3,542.27	-36.96% €
FTSE/ATHEX Large Cap Net Total Return	657.32 €	669.79	-12.47	-1.86%	654.86	677.49	519.48	1,084.55	-36.99% €
FTSE/Athex Mid Cap Total Return	1,010.90 €	1,017.80	-6.90	-0.68%			818.92	1,582.98	-30.61% €
FTSE/ATHEX-CSE Banking Total Return Index	180.35 €	191.24	-10.89	-5.69%			177.64	588.56	-69.26% €
Hellenic Mid & Small Cap Index	929.54 €	934.56	-5.02	-0.54%	925.53	944.29	701.19	1,312.90	-25.84% €
FTSE/Athex Banks	272.11 €	288.55	-16.44	-5.70%	269.56	299.96	263.25	889.92	-69.26% €
FTSE/Athex Insurance	1,454.98 €	1,486.87	-31.89	-2.14%	1,423.09	1,490.86	1,076.29	2,088.80	-28.15% €
FTSE/Athex Financial Services	696.62 €	709.33	-12.71	-1.79%	696.43	720.80	548.44	1,123.81	-30.12% €
FTSE/Athex Industrial Goods & Services	1,801.77 #	1,787.81	13.96	0.78%	1,772.12	1,810.44	1,302.84	2,712.84	-29.66% €
FTSE/Athex Retail	41.68 €	42.41	-0.73	-1.72%	40.54	42.41	38.18	75.77	-40.15% €
FTSE/ATHEX Real Estate	4,025.81 €	4,133.97	-108.16	-2.62%	4,022.71	4,176.07	2,945.19	5,826.74	-26.34% €
FTSE/Athex Personal & Household Goods	8,014.90 #	7,984.93	29.97	0.38%	7,919.81	8,070.88	5,596.91	10,280.00	-18.30% €
FTSE/Athex Food & Beverage	7,726.61 €	7,998.16	-271.55	-3.40%	7,710.52	8,017.54	5,768.28	13,004.12	-31.40% €
FTSE/Athex Basic Resources	4,038.86 #	4,020.50	18.36	0.46%	3,985.75	4,040.62	2,713.19	7,435.44	-37.46% €
FTSE/Athex Construction & Materials	1,981.76 €	2,039.71	-57.95	-2.84%	1,969.15	2,067.85	1,403.78	3,344.96	-35.72% €
FTSE/Athex Oil & Gas	3,329.99 #	3,270.45	59.54	1.82%	3,269.35	3,331.77	2,268.39	5,154.35	-34.04% €
FTSE/Athex Chemicals	7,277.81 €	7,442.79	-164.98	-2.22%	7,270.40	7,487.23	5,513.26	9,442.19	-17.90% €
FTSE/Athex Travel & Leisure	1,285.80 €	1,311.11	-25.31	-1.93%	1,269.71	1,316.66	904.20	2,084.49	-33.71% €
FTSE/Athex Technology	739.53 €	743.42	-3.89	-0.52%	736.18	751.31	537.98	1,029.21	-17.87% €
FTSE/Athex Telecommunications	3,371.90 €	3,385.66	-13.76	-0.41%	3,355.38	3,410.43	2,480.07	3,960.95	-14.10% €
FTSE/Athex Utilities	2,807.41 #	2,794.09	13.32	0.48%	2,772.50	2,824.64	1,865.80	3,447.76	-11.87% €
FTSE/Athex Health Care	448.78 €	448.78	0.00	0.00%	448.78	448.78	395.48	508.96	-11.10% €
Athex All Share Index	147.53 €	149.62	-2.09	-1.40%	147.53	147.53	122.81	223.49	-31.59% €
Hellenic Corporate Bond Index	110.98 #	110.46	0.52	0.47%			106.56	121.22	-7.73% €
Hellenic Corporate Bond Price Index	87.12 #	86.74	0.39	0.45%			84.04	96.15	-8.97% €

Note 1: FTSE/Med 100, Hellenic Corporate Bond Price Index and Hellenic Corporate Bond Index closing prices refer to the previous trading day of 15/05/2020.

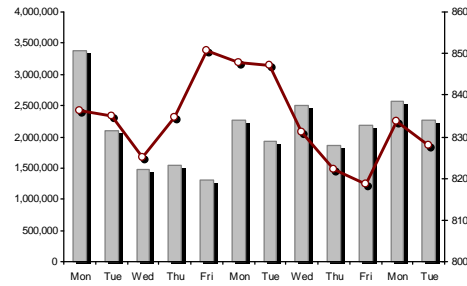
Note 2: The Hellenic Mid & Small Cap Index is a Customized index calculated by the Athens Exchange.

Athex Indices

FTSE/Large Cap

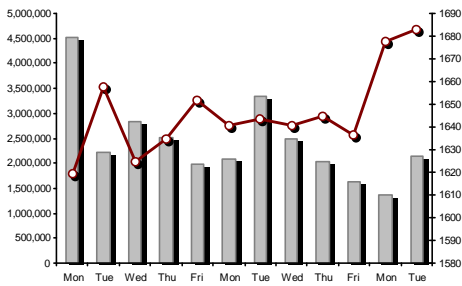


19/05/2020: -1.86% FTSE/Athex Mid Cap Index

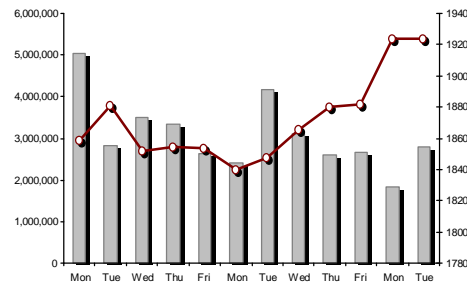


19/05/2020: -0.68%

FTSE/ATHEX Global Traders Index Plus

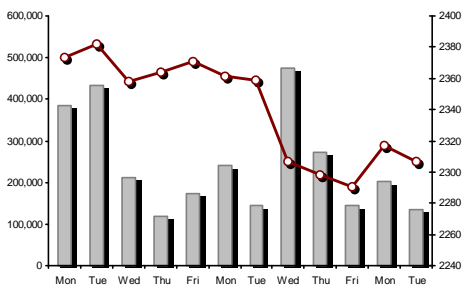


19/05/2020: 0.33% FTSE/ATHEX Global Traders Index



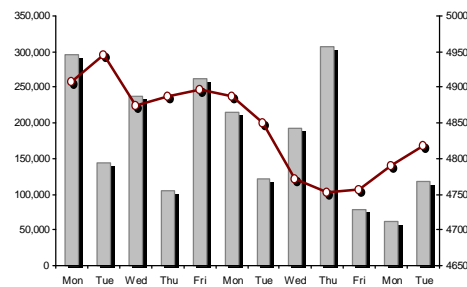
19/05/2020: 0.02%

FTSE/ATHEX Mid & Small Cap Factor-Weighted Index



19/05/2020: -0.44%

ATHEX Mid & SmallCap Price Index



19/05/2020: 0.61%

Indices volume of transactions

Indices closing prices

Analytic Figures for Athex Market's Boards and Categories

	Total Traded Securities	Main Market	Surveillance	Exchange Traded Funds (ETFs)
Totals	114	104	9	1
Gain / Lose / Same:	38 / 46 / 30	37 / 45 / 22	1 / 0 / 8	0 / 1 / 0
Athex Capitalisation (mill. €) **	41,955.17	41,691.81	263.36	
Daily Average Trans/ons Value(thou.€)	72,826.95	72,749.81	94.75	72.37
Transactions Value	63,060.15	63,025.94	32.03	2.17
Main Board:	54,181.56	54,147.35	32.03	2.17
Blocks Board 6_2_3:	8,878.59	8,878.59	0.00	0.00
Forced Sales Board:	0.00	0.00	0.00	0.00
Special Terms Board:	0.00	0.00	0.00	0.00
Daily Average Transactions Volume	41,331,845	40,761,215	590,987	3,722
Transactions Volume	77,025,583	76,728,730	296,708	145
Main Board:	58,214,610	57,917,757	296,708	145
Blocks Board 6_2_3:	18,810,973	18,810,973	0	0
Forced Sales Board:	0	0	0	0
Special Terms Board:	0	0	0	0
Daily Average Number of Trades	35,542	35,389	149	5
Number of Trades	40,090	40,007	76	7
Main Board:	40,077	39,994	76	7
Blocks Board 6_2_3:	13	13	0	0
Forced Sales Board:	0	0	0	0
Special Terms Board:	0	0	0	0

Trading Details by Athex Sectors and Financial Instruments (ETFs)

Code	Sectors	Gain / Lose / Same	Number of Trades	Transactions Volume	Transactions Value	% of Total Trans. Value
3010	- Banks	1 / 5 / 0	22,221	70,034,490	32,648,998.82	51.77%
5510	- Basic Resources	7 / 2 / 2	481	164,563	296,615.72	0.47%
5010	- Construction & Materials	4 / 4 / 2	2,815	886,252	3,014,294.19	4.78%
4020	- Consumer Products & Services	2 / 3 / 0	2,001	365,481	4,145,624.53	6.57%
6010	- Energy	2 / 2 / 0	1,155	250,996	2,394,082.99	3.80%
12000	- Financial Instruments	0 / 1 / 0	7	145	2,173.92	0.00%
3020	- Financial Services	1 / 1 / 2	715	1,297,770	555,471.89	0.88%
4510	- Food Beverage & Tobacco	5 / 1 / 4	455	84,355	1,378,251.84	2.19%
2010	- Health Care	0 / 0 / 3	19	21,061	11,193.09	0.02%
5020	- Industrial Goods & Service	3 / 10 / 6	1,801	609,353	2,575,572.67	4.08%
3030	- Insurance	0 / 1 / 0	71	10,350	38,202.52	0.06%
4030	- Media	0 / 0 / 0	---	---	---	---
4520	- Personal Care, Drug & Grocery Stores	2 / 1 / 0	121	25,405	192,227.78	0.30%
3510	- Real Estate	1 / 4 / 3	388	79,232	432,595.97	0.69%
4040	- Retail	1 / 2 / 1	218	95,700	321,962.45	0.51%
1010	- Technology	2 / 3 / 4	239	68,838	102,843.34	0.16%
1510	- Telecommunications	1 / 2 / 2	2,102	614,119	6,587,407.31	10.45%
4050	- Travel & Leisure	2 / 3 / 1	2,504	1,127,017	4,426,847.07	7.02%
6510	- Utilities	4 / 1 / 0	2,777	1,290,456	3,935,779.08	6.24%

Top 10 best & worst performing Shares

Main Market

With positive Price change	Closing price	change	With negative Price change	Closing price	change
KLOUKINAS - LAPPAS SA (CR)	0.506	3.69% #	ALPHA BANK (CR)	0.51	-7.61% €
MOTOR OIL (CR)	13.53	3.20% #	AEGEAN AIRLINES (CR)	4.77	-5.73% €
ALUMIL (CR)	0.726	1.68% #	NATIONAL BANK (CR)	0.953	-5.64% €
AVAX S.A. (CR)	0.4295	1.54% #	PIRAEUS BANK (CR)	1.04	-4.59% €
PPC (CR)	2.638	1.46% #	EUROBANK HOLDINGS (CR)	0.306	-4.37% €
MYTILINEOS (CR)	6.92	1.39% #	REVOIL (CR)	0.6	-4.15% €
TERNA ENERGY (CR)	8.79	1.15% #	TITAN CEMENT (CB)	10.4	-4.06% €
MARFIN INVESTMENT GROUP (CR)	0.0582	1.04% #	ATTICA BANK S.A. (CR)	0.1914	-3.92% €
INTRALOT (CR)	0.122	0.83% #	CC HBC AG (CR)	20.62	-3.46% €
ELVALHALCOR (CR)	1.26	0.80% #	LAMDA DEVELOPMENT SA (CR)	6	-2.91% €
With the highest Transactions Value	Value (thou. €)	change	With the highest Transactions Volume	Volume	change
EUROBANK HOLDINGS (CR)	13,728.19	-4.37% €	EUROBANK HOLDINGS (CR)	44,084,473	-4.37% €
NATIONAL BANK (CR)	9,053.49	-5.64% €	ALPHA BANK (CR)	14,633,286	-7.61% €
ALPHA BANK (CR)	7,742.58	-7.61% €	NATIONAL BANK (CR)	9,204,914	-5.64% €
OTE (CR)	6,549.64	-0.41% €	PIRAEUS BANK (CR)	1,867,268	-4.59% €
OPAP (CR)	3,764.25	-1.61% €	MARFIN INVESTMENT GROUP (CR)	1,155,042	1.04% #
JUMBO SA (CR)	3,762.74	0.66% #	PPC (CR)	935,583	1.46% #
PPC (CR)	2,477.93	1.46% #	OTE (CR)	533,876	-0.41% €
MYTILINEOS (CR)	2,132.36	1.39% #	OPAP (CR)	474,634	-1.61% €
TITAN CEMENT (CB)	2,034.00	-4.06% €	INTRALOT (CR)	429,151	0.83% #
PIRAEUS BANK (CR)	2,027.54	-4.59% €	ELLAKTOR (CR)	378,010	-2.84% €

Note: Stocks that are not included in the "Low Dispersion" and "Under Supervision" categories, and the transactions value is more than 10,000 €.

Derivatives Summary

	Number of Trades	Volume	Open Interest
Index Futures	275	1,615	3,151
FTSE/Athex Large Cap	275	1,615	3,151
Stock Futures	2,349	38,892	192,729
ADMIE (IPTO) HOLDING S.A. (CR)	32	157	2,861
ALPHA BANK (CR)	454	7,958	25,774
ATTICA BANK S.A. (CR)	0	0	341
CC HBC AG (CR)	21	28	531
CENERGY HOLDINGS (CB)	5	21	2,177
ELLAKTOR (CR)	70	513	7,940
EUROBANK HOLDINGS (CR)	534	17,623	49,461
EYDAP S.A. (CR)	6	17	153
FOURLIS (CR)	7	15	342
GEK TERNA (CR)	59	176	2,474
HELLENIC EXCHANGES-A.S.E. (CR)	7	33	1,451
HELLENIC PETROLEUM (CR)	6	28	1,281
INTRACOM HOLDINGS (CR)	0	0	1,670
INTRALOT (CR)	17	300	1,215
JUMBO SA (CR)	16	31	356
LAMDA DEVELOPMENT SA (CR)	31	95	1,438
MARFIN INVESTMENT GROUP (CR)	20	415	42,085
MOTOR OIL (CR)	8	20	192
MYTILINEOS (CR)	103	329	4,367
NATIONAL BANK (CR)	373	5,598	18,755
OPAP (CR)	34	130	1,499
OTE (CR)	37	143	1,841
P.P.A. S.A. (CR)	0	0	214
PIRAEUS BANK (CR)	158	2,619	9,661
PPC (CR)	265	2,213	8,736
TERNA ENERGY (CR)	9	31	3,039
TITAN CEMENT (CB)	57	146	318
VIOHALCO SA/NV (CB)	20	253	2,557
Index Options	5	65	762
FTSE/Athex Large Cap	5	65	762
Stock Options	1	11	858
ALPHA BANK (CR)	0	0	240
NATIONAL BANK (CR)	0	0	360
OPAP (CR)	1	11	137
OTE (CR)	0	0	71
PIRAEUS BANK (CR)	0	0	50
PPC (CR)	0	0	0
Total Derivatives Traded	2,630	40,583	197,500

Number of Outstanding Securities	Nominal Value	Dividends [1]			Date of Last Coupon		Note	Shares	Closing price	% change	Previous closing price/date	Open price	Price min	Price max	Last price	Avg price	Last Bid [7]	Last Ask [7]	P/E after tax	Year	Volume	Trades	Transactions Value[8]	Company Mkt Value (thou. €)	Year low	Year high	Sector[4]
----------------------------------	---------------	---------------	--	--	---------------------	--	------	--------	---------------	----------	-----------------------------	------------	-----------	-----------	------------	-----------	--------------	--------------	---------------	------	--------	--------	-----------------------	-----------------------------	----------	-----------	-----------

Main Market - High Liquidity Class

1,543,699,381	0.300	---	---	---	07/04/2008	18/04/2017	---	ALPHA BANK (CR)	0.51	-7.61	€ 0.552	18/05/2020	0.57	0.504	0.5788	0.51	0.529	148@0.509	1000@0.515	---	---	14,633,286	6,949	7,742,584.45	787,286.68	0.486	1.928	30101010
461,254,013	0.300	---	---	---	04/06/2008	30/04/2018	---	ATTICA BANK S.A. (CR)	0.1914	-3.92	€ 0.1992	18/05/2020	0.207	0.1914	0.208	0.1914	0.198	15300@0.191	196@0.194	---	---	240,661	203	47,636.47	88,284.02	0.16	0.412	30101010
48,855,000	0.080	(0.275)	(0.375)	---	20/05/2019	25/06/2019	---	AUTOHELLAS SA (CR)	3.9	-2.13	€ 3.985	18/05/2020	3.985	3.86	4.015	3.9	3.911	77@3.89	2500@3.92	---	---	91,802	333	359,010.52	190,534.50	3.7	8.28	40201040
190,162,681	---	---	---	---	---	07/12/2016	---	CENERGY HOLDINGS (CB)	0.935	-1.99	€ 0.954	18/05/2020	0.954	0.93	0.972	0.935	0.948	300@0.931	101@0.935	---	---	36,972	87	35,031.76	177,802.11	0.585	1.51	50202010
369,930,157	6.70	0.54	2.57	---	04/07/2019	29/04/2013	---	CC HBC AG (CR)	20.62	-3.46	€ 21.36	18/05/2020	21.41	20.55	21.42	20.62	21.042	60@20.56	240@20.80	---	---	64,283	376	1,352,615.98	7,627,959.84	15.385	34.88	45101020
3,709,161,852	0.230	---	---	---	02/05/2008	20/05/2019	---	EUROBANK HOLDINGS (CR)	0.306	-4.37	€ 0.32	18/05/2020	0.335	0.3012	0.335	0.306	0.311	50@0.305	1000@0.307	---	---	44,084,473	6,569	13,728,193.98	1,135,003.53	0.282	0.924	30101010
52,004,961	0.810	---	---	---	21/06/2010	23/07/2019	---	FOURLIS (CR)	3.47	-1.28	€ 3.515	18/05/2020	3.54	3.465	3.555	3.47	3.472	700@3.46	476@3.50	---	---	87,075	159	302,327.40	180,457.21	2.745	5.98	40401010
136,059,759	0.880	0.36	0.39	0.47	24/01/2020	05/03/2014	---	JUMBO SA (CR)	15.2	0.66	# 15.1	18/05/2020	15.2	14.97	15.27	15.2	15.167	3000@15.16	1200@15.22	---	---	248,085	1,594	3,762,738.41	2,068,108.34	9.94	19.48	40203045
176,736,715	0.300	---	---	---	30/05/2007	27/11/2019	---	LAMDA DEVELOPMENT SA (CR)	6	-2.91	€ 6.18	18/05/2020	6.2	6	6.25	6	6.088	2080@5.99	50@6.02	---	---	68,278	323	415,651.52	1,060,420.29	4.26	8.85	35101010
939,510,748	0.300	---	---	---	26/04/2007	29/08/2014	---	MARFIN INVESTMENT GROUP (CR)	0.0582	1.04	# 0.0576	18/05/2020	0.059	0.058	0.0593	0.0582	0.059	16333@0.058	3900@0.059	---	---	1,155,042	199	67,862.05	54,679.53	0.0474	0.1296	30202000
82,447,868	---	---	---	---	---	23/07/2019	---	TITAN CEMENT (CB)	10.4	-4.06	€ 10.84	18/05/2020	10.86	10.4	10.92	10.4	10.559	868@10.40	50@10.46	---	---	192,627	1,442	2,034,002.65	857,457.83	8.55	19.54	50101030
259,189,761	---	---	---	---	---	26/02/2016	---	VIOHALCO SA/NV (CB)	2.29	-0.22	€ 2.295	18/05/2020	2.33	2.23	2.34	2.29	2.268	217@2.29	2160@2.30	---	---	104,335	320	236,663.92	593,544.55	1.47	3.99	55102015
144,321,516	0.300	---	---	---	01/07/2011	22/01/2020	---	AVAX S.A. (CR)	0.4295	1.54	# 0.423	18/05/2020	0.428	0.4265	0.442	0.4295	0.433	100@0.427	2776@0.430	---	---	118,163	142	51,153.28	61,986.09	0.2225	0.64	50101010
232,000,000	2.12	---	0.0601	0.06	02/08/2019	19/06/2017	---	ADMIE (IPTO) HOLDING S.A. (CR)	2.16	-1.82	€ 2.2	18/05/2020	2.22	2.155	2.225	2.16	2.18	14385@2.16	1850@2.18	9.32	2019	242,866	396	529,341.08	501,120.00	1.57	2.775	65101015
71,417,100	0.650	0.55	0.6	---	03/06/2019	27/06/2014	---	AEGEAN AIRLINES (CR)	4.77	-5.73	€ 5.06	18/05/2020	4.93	4.645	5	4.77	4.825	132@4.77	500@4.85	---	---	125,079	719	603,479.20	340,659.57	3.2	9.08	40501010
103,423,291	0.570	---	---	---	01/08/2011	19/04/2016	---	GEK TERNA (CR)	6	-2.28	€ 6.14	18/05/2020	6.24	5.91	6.27	6	6.02	218@5.96	696@6.00	---	---	91,441	493	550,438.24	620,539.75	3.705	8.93	50101010
232,000,000	2.48	---	---	---	20/07/2015	12/12/2001	---	PPC (CR)	2.638	1.46	# 2.6	18/05/2020	2.638	2.572	2.718	2.638	2.649	1000@2.64	4053@2.66	---	---	935,583	1,846	2,477,933.97	612,016.00	1.453	4.388	65101015
914,715,153	3.00	---	---	---	16/05/2008	29/08/2018	---	NATIONAL BANK (CR)	0.953	-5.64	€ 1.01	18/05/2020	1.044	0.953	1.044	0.953	0.984	455@0.952	500@0.968	---	---	9,204,914	6,366	9,053,486.83	871,723.54	0.815	3.072	30101010
214,272,003	1.03	---	---	---	05/07/2011	22/07/2019	---	ELLAKTOR (CR)	0.82	-2.84	€ 0.844	18/05/2020	0.862	0.815	0.862	0.82	0.838	882@0.820	1000@0.829	---	---	378,010	561	316,910.20	175,703.04	0.512	1.968	50101010
60,348,000	0.580	0.0502	0.05	---	05/06/2019	05/08/2019	---	HELLENIC EXCHANGES-A.S.E. (CR)	3.3	-2.37	€ 3.38	18/05/2020	3.415	3.3	3.43	3.3	3.331	1360@3.30	998@3.33	---	---	139,312	487	464,103.29	199,148.40	2.54	5.05	30202015
305,635,185	2.18	0.4	0.75	0.25	07/01/2020	01/10/2003	---	HELLENIC PETROLEUM (CR)	5.85	-1.02	€ 5.91	18/05/2020	5.98	5.83	5.98	5.85	5.863	500@5.84	239@5.85	---	---	65,071	213	381,493.62	1,787,965.83	4.4	8.8	60101000
106,500,000	0.600	0.2	0.27	---	28/06/2019	28/01/2000	---	EYDAP S.A. (CR)	6.88	0.44	# 6.85	18/05/2020	6.88	6.69	6.93	6.88	6.802	31@6.80	603@6.88	---	---	26,660	185	181,331.80	732,720.00	4.95	7.78	65102030
156,961,721	0.300	---	---	---	30/05/2013	14/11/2007	---	INTRALOT (CR)	0.122	0.83	# 0.121	18/05/2020	0.121	0.121	0.1278	0.122	0.125	15975@0.122	1500@0.125	---	---	429,151	102	53,485.45	19,149.33	0.084	0.41	40501020
110,782,980	0.750	1.3	1.3	0.35	10/12/2019	04/11/2013	---	MOTOR OIL (CR)	13.53	3.20	# 13.11	18/05/2020	13.4	13.16	13.53	13.53	13.35	16500@13.50	1@13.54	---	---	149,026	912	1,989,541.91	1,498,893.72	8.6	21.24	60101020
142,891,161	0.970	0.32	0.36	---	26/06/2019	07/07/2017	---	MYTILINEOS (CR)	6.92	1.39	# 6.825	18/05/2020	6.9	6.78	6.925	6.92	6.847	32@6.90	3641@6.92	---	---	311,435	1,256	2,132,360.96	988,806.83	4.896	10.39	50203000
25,000,000	2.00	0.1712	0.424	---	22/07/2019	08/08/2003	---	P.P.A. S.A. (CR)	16.64	-0.36	€ 16.7	18/05/2020	16.7	16.48	16.8	16.64	16.64	1074@16.64	111@16.70	11.74	2019	6,239	138	103,818.98	416,000.00	12.96	23	50206060
334,707,816	0.300	0.4	0.7	---	16/01/2020	25/04/2001	---	OPAP (CR)	7.95	-1.61	€ 8.08	18/05/2020	8.08	7.825	8.135	7.95	7.931	3456@7.92	6446@7.96	---	---	474,634	1,645	3,764,248.25	2,660,927.14	5.4	12.648	40501020
470,174,576	2.83	0.3529	0.5245	---	22/07/2019	18/06/1998	---	OTE (CR)	12.25	-0.41	€ 12.3	18/05/2020	12.3	12.16	12.39	12.25	12.268	17158@12.25	387@12.26	---	---	533,876	1,974	6,549,640.26	5,759,638.56	9.01	14.39	15102015
436,659,164	6.00	---	---	---	16/05/2008	31/07/2017	---	PIRAEUS BANK (CR)	1.04	-4.59	€ 1.09	18/05/2020	1.135	1.015	1.1535	1.04	1.086	500@1.03	46@1.04	---	---	1,867,268	2,087	2,027,535.83	454,125.53	0.92	3.394	30101010
69,877,484	0.780	(0.14)	0.1489	0.167	11/05/2020	13/06/2018	---	GR. SARANTIS S.A. (CR)	8.4	-0.24	€ 8.42	18/05/2020	8.73	8.33	8.73	8.4	8.399	169@8.33	1077@8.40	---	---	22,218	100	186,605.63	586,970.87	5.2	9.2	45201020
113,918,936	0.300	0.0419	---	---	10/01/2018	05/03/2020	---	TERNA ENERGY (CR)	8.79	1.15	# 8.69	18/05/2020	8.69	8.69	8.79	8.79	8.758	37@8.79	595@8.80	---	---	85,283	347	746,934.43	1,001,347.45	5.44	8.94	65101010

Main Market - Medium Liquidity Class

13,126,020	0.490	---	---	---	08/07/2010	06/09/2019	---	AS COMPANY SA (CR)	1.905	0.79	# 1.89	18/05/2020	1.91	1.84	1.91	1.905	1.875	120@1.86	630@1.91	---	---	2,076	18	3,892.81	25,005.07	1.69	2.99	40401030
129,514,137	0.300	---	---	---	01/07/2008	21/02/2020	---	AUDIO VISUAL ENTERPRISES (CR)	0.2	---	~ 0.2	18/05/2020	---	---	---	---	---	1500@0.188	4000@0.199	---	---	---	---	---	25,902.83	0.12	0.38	40301010
35,764,593	2.10	0.035	0.055	0.039	01/04/2020	25/11/2019	---	BRIQ PROPERTIES (CR)	1.67	0.30	# 1.665	18/05/2020	1.65	1.63	1.67	1.67	1.642	125@1.64	245@1.67	4.08	2019	2,005	10	3,292.35	59,726.87	1.5	2.3	35102030
15,816,009	0.300	---	---	---	01/07/2009	17/07/2000	---	BYTE COMPUTER SA (CR)	0.864	---	~ 0.864	18/05/2020	0.864	0.84	0.864	0.864	0.851	299@0.850	127@0.864	---	---	6,889	36	5,862.09	13,665.03	0.515	1.24	10101010
101,123,806	0.360	---	---	---	22/07/2010	28/06/2011	---	CENTRIC HOLDINGS (CR)	0.215	-0.46	€ 0.216	18/05/2020	0.21	0.21	0.215	0.215	0.212	300@0.208	2250@0.215	---	---	12,480	14	2,645.50	21,741.62	0.1505	0.28	40203040

Daily Official List

Year: 141 Trading Day No: 91

Section 2: Analytic Figures of Shares Transactions

Tuesday, 19 May, 2020

Number of Outstanding Securities	Nominal Value	Dividends [1]			Date of Last Coupon		Note	Shares	Closing price	% change	Previous closing price/date	Open price	Price min	Price max	Last price	Avg price	Last Bid [7]	Last Ask [7]	P/E after tax	Year	Volume	Trades	Transactions Value[8]	Company Mkt Value (thou. €)	Year low	Year high	Sector [4]		
		2017	2018	2019	Dividend [2]	Right																							
784,500	10.00		0.13	0.2	10/10/2019	31/07/2018	---	CNL CAPITAL (CR)	6.8	---	6.8	18/05/2020	6.8	6.7	6.9	6.8	6.77	100@6.60	175@6.85	8.38	2019	3,386	28	22,924.55	5,334.60	6.5	10.5	30202000	
9,907,500	0.300				06/10/2005	13/02/2002	---	CPI SA (CR)	0.478	---	0.478	18/05/2020	0.478	0.478	0.478	0.478	0.478	3999@0.354	139@0.478		2018	10	1	4.78	4,735.79	0.328	0.61	10102030	
11,720,024	0.540				21/08/2014	30/08/2019	---	FLEXOPACK SA (CR)	6.15	---	6.15	18/05/2020						25@6.25	2692@6.90						72,078.15	5.4	8.3	50203030	
20,578,374	0.620	0.1			08/06/2018	18/05/2015	---	INFORM P. LYKOS (CR)	1.09	-0.91	€	1.1	18/05/2020	1.08	1.03	1.095	1.095	1.068	2@1.06	559@1.10			4,489	14	4,795.22	22,430.43	0.66	1.7	50205030
10,500,000	4.00	0.31	0.36		07/05/2019	02/08/2016	---	INTERCONTINENTAL (CR)	6.5	---	6.5	18/05/2020	6.5	6.5	6.5	6.5	6.5	100@6.30	150@7.00			8	1	52.00	68,250.00	5.9	8.35	35102000	
76,000,000	1.00				03/07/2007	17/09/2018	---	INTRACOM HOLDINGS (CR)	0.46	---	0.46	18/05/2020	0.46	0.452	0.47	0.46	0.461	4000@0.459	900@0.465			62,840	110	29,000.31	34,960.00	0.28	0.915	15101010	
30,477,156	0.300				12/08/2008	17/10/2017	---	INTRACOM CONSTR. (CR)	0.998	1.84	#	0.98	18/05/2020	1.01	0.96	1.01	0.998	0.998	100@0.962	900@0.998			470	5	469.28	30,416.20	0.58	1.8	50101010
4,740,000	0.860				14/03/2003		---	LOGISMOS S.A. (CR)	0.6	-6.25	€	0.64	18/05/2020	0.6	0.6	0.6	0.6	0.6	1999@0.545	1689@0.600	75.40	2018	211	1	126.60	2,844.00	0.46	0.88	10101015
4,419,616	1.58				21/07/2011	04/03/2015	---	MEDICON S.A (CR)	1.97	---	1.97	18/05/2020	1.97	1.97	1.97	1.97	1.97	100@1.75	25@1.96			25	1	49.25	8,706.64	1.5	2.98	20102010	
468,700		0.73	4.869		25/04/2019	21/05/2004	---	MERMEREN KOMB. A.D. PR. (GDR)	53	8.16	#	49	18/05/2020	52.6	52.6	53	53	52.791	14@49.20	15@52.00	1.23	2019	22	6	1,161.40	24,841.10	40	67.8	55102000
10,500,000	0.950				24/06/2008	30/06/2017	---	MEVACO SA (CR)	1.46	3.55	#	1.41	18/05/2020	1.49	1.43	1.5	1.44	1.461	40@1.41	217@1.43		2018	210	4	306.90	15,330.00	1.24	1.87	55102015
3,953,090	0.300	0.16	0.15		06/06/2019	05/12/2012	---	PAPERPACK (CR)	5.35	-2.73	€	5.5	18/05/2020	5.35	5.35	5.35	5.35	5.35	320@5.05	742@5.35	10.82	2019	5	1	26.75	21,149.03	3.98	6	50203030
11,812,193	0.470				29/05/2018	07/04/2020	---	PROFILE SA (CR)	3.305	0.46	#	3.29	18/05/2020	3.3	3.26	3.37	3.305	3.305	1000@3.29	3077@3.31			8,898	44	29,409.93	39,039.30	2.12	4.34	10101010
27,345,120	0.280				18/07/2005	26/02/2014	---	QUALITY & RELIABILITY SA (CR)	0.251	---	0.251	18/05/2020	0.245	0.239	0.254	0.251	0.244	5@0.250	6476@0.251			44,251	94	10,790.06	6,863.63	0.17	0.305	10101010	
35,740,896	0.040				05/09/2008	25/11/2019	---	QUEST HOLDINGS (CR)	7.76	-1.27	€	7.86	18/05/2020	7.9	7.68	7.96	7.76	7.829	50@7.72	200@7.78			6,573	50	51,461.08	277,349.35	5.6	9.76	10101010
57,434,884	1.31				05/06/2008	12/06/2009	---	REDS S.A. (CR)	0.92	-0.86	€	0.928	18/05/2020	0.932	0.904	0.932	0.92	0.917	133@0.904	200@0.918			3,267	13	2,994.56	52,840.09	0.752	1.47	35101010
6,456,530	1.08				04/07/2019	02/08/2010	---	SPACE HELLAS SA (CR)	4.1	0.49	#	4.08	18/05/2020	4.1	4.1	4.14	4.1	4.1	150@3.99	198@4.10			803	5	3,292.34	26,471.77	3.02	5.88	15101010
15,627,315	0.300				16/11/1992	24/07/2019	---	UNIBIOS (CR)	0.24	-0.83	€	0.242	18/05/2020	0.25	0.235	0.252	0.24	0.24	100@0.236	944@0.239			23,728	22	5,683.92	3,750.56	0.186	0.463	50204000
22,016,250	0.370				15/07/2009	11/05/2000	---	ALUMIL (CR)	0.726	1.68	#	0.714	18/05/2020	0.714	0.702	0.726	0.726	0.713	476@0.702	814@0.726			16,095	34	11,477.13	15,983.80	0.431	1.62	55102035
401,136	14.50	0.75			05/04/2018	31/12/2019	---	ANDROMEDA SA (CR)	19.4	---	19.4	18/05/2020	19.4	19.4	19.4	19.4	19.4	10@18.60	101@20.00	3.27	2019	30	1	582.00	7,782.04	19.4	27	30202010	
18,810,000	0.400				08/07/2010	14/11/2007	---	VARVERIS - MODA BAGNO SA (CR)	0.49	---	0.49	18/05/2020						555@0.343	932@0.470						9,216.90	0.21	0.64	40401025	
23,986,500	1.05				26/06/2009	15/03/2000	---	BIOKARPET S.A.(CR)	0.7	---	0.7	18/05/2020						240@0.540	899@0.700						16,790.55	0.482	1.4	50101035	
4,968,600	2.88				01/07/1998	14/12/1998	---	VIS SA (CR)	0.685	---	0.685	18/05/2020						3000@0.500	199@0.890		2018				3,403.49	0.62	0.97	50203030	
6,325,000	0.600	0.15	0.103		04/07/2019	17/02/2014	---	VOGIATZOGLOU SYSTEMS SA (CR)	1.7	---	1.7	18/05/2020						1242@1.70	300@1.84						10,752.50	1.4	2.44	50205010	
24,060,000	0.300	0.01	0.015	0.035	05/05/2020	01/07/2019	---	GEN. COMMERCIAL & IND.SA (CR)	0.69	-1.43	€	0.7	18/05/2020	0.67	0.66	0.69	0.69	0.682	100@0.675	1360@0.690	14.91	2019	7,390	18	5,038.60	16,601.40	0.54	1.13	50205010
34,720,000	0.310				16/06/2010	01/08/2007	---	DROMEAS SA (CR)	0.35	0.58	#	0.348	18/05/2020	0.35	0.35	0.35	0.35	0.35	1499@0.284	6653@0.344			10	1	3.50	12,152.00	0.25	0.485	40202015
13,673,200	0.880				18/07/2008	26/07/2001	---	EVROFARMA SA (CR)	0.97	2.11	#	0.95	18/05/2020	0.978	0.93	0.978	0.97	0.931	180@0.940	988@0.970			1,013	6	943.53	13,263.00	0.61	1.375	45102020
27,848,000	0.300	0.0034			20/08/2018	02/09/2003	---	NEWSPHONE HELLAS SA (CR)	0.294	-8.70	€	0.322	18/05/2020	0.29	0.29	0.296	0.294	0.294	1400@0.292	500@0.300			7,600	9	2,234.40	8,187.31	0.199	0.53	15102015
11,250,000	0.520		0.04		22/07/2019	09/11/2015	---	EKTER SA (CR)	0.75	-2.22	€	0.767	18/05/2020	0.767	0.75	0.78	0.75	0.76	270@0.750	750@0.760			17,911	44	13,620.77	8,437.50	0.54	1.33	50101010
18,410,839	1.00				07/07/2009	10/09/2010	---	ELASTRON (CR)	0.886	---	0.886	18/05/2020	0.888	0.88	0.89	0.886	0.887	300@0.864	1417@0.880			1,881	4	1,667.97	16,312.00	0.6	1.58	55102010	
375,241,586	0.390		0.03		28/05/2019	14/07/2006	---	ELVALHALCOR (CR)	1.26	0.80	#	1.25	18/05/2020	1.26	1.24	1.26	1.26	1.249	5345@1.24	230@1.26			33,745	79	42,155.41	472,804.40	0.83	1.836	55102015
31,734,530	1.60				09/07/2007	19/07/2006	---	ELGEKA SA (CR)	0.33	3.13	#	0.32	18/05/2020	0.33	0.33	0.33	0.33	0.33	1715@0.271	1044@0.330			50	1	16.50	10,472.39	0.214	0.565	45201010
19,864,886	5.60	0.672	0.672	0.672	26/03/2020	02/07/2008	---	BANK OF GREECE (CR)	12.84	0.16	#	12.82	18/05/2020	12.84	12.7	12.86	12.84	12.747	55@12.70	49@12.82			3,888	47	49,561.26	255,065.14	11.9	16.68	30101010
26,730,187	0.520	0.04	0.06		09/07/2019	01/08/2017	---	ELTON SA (CR)	1.275	-0.39	€	1.28	18/05/2020	1.29	1.26	1.31	1.275	1.276	20@1.26	660@1.28			7,072	31	9,021.22	34,080.99	1.02	1.85	50205010
5,000,000	0.300	0.13	0.18		28/06/2019	09/11/2016	---	ENTERSOFT (CR)	6.95	-0.71	€	7	18/05/2020	6.9	6.9	7.5	7.5	6.942	38@6.90	100@7.00			538	3	3,735.00	34,750.00	5.4	7.65	10101015
36,300,000	1.12	0.221	0.126		27/06/2019	12/12/2007	---	THESSALONIKA WATER & SEWERAGE	3.72	1.92	#	3.65	18/05/2020	3.65	3.65	3.72	3.72	3.716	180@3.66	972@3.73			64	3	237.80	135,036.00	3.06	5	65102030
27,503,677	0.630	0.12	0.13	0.2446	06/05/2020	18/10/1999	---	EUROPEAN RELIANCE INSUR. (CR)	3.65	-2.14	€	3.73	18/05/2020	3.73	3.57	3.74	3.69	3.691	40@3.61	843@3.69			10,350	71	38,202.52	100,388.42	2.7	5.24	30302010
122,156,754	0.440				25/11/2019	28/03/2018	---	IASO SA (CR)	1.305	---	1.305	18/05/2020						125@1.31	500@1.33						159,414.56	1.15	1.48	20101010	
114,320,400	0.100	(0.0175)	(0.0575)		23/03/2020	05/08/2019	---	IKTINOS HELLAS SA (CR)	0.625	0.32	#	0.623	18/05/2020	0.639	0.613	0.643	0.625	0.623	465@0.613	539@0.625			57,269	104	35,664.93	71,450.25	0.53	1.206	50101035

Daily Official List

Year: 141 Trading Day No: 91

Section 2: Analytic Figures of Shares Transactions

Tuesday, 19 May, 2020

Number of Outstanding Securities	Nominal Value	Dividends [1]			Date of Last Coupon		Note	Shares	Closing price	% change	Previous closing price/date	Open price	Price min	Price max	Last price	Avg price	Last Bid [7]	Last Ask [7]	P/E after tax	Year	Volume	Trades	Transactions Value[8]	Company Mkt Value (thou. €)	Year low	Year high	Sector[4]	
		2017	2018	2019	Dividend [2]	Right																						
8,226,132	0.900	---	---	---	15/05/2009	13/10/2014	---	ILYDA S.A. (CR)	0.258	4.03 #	0.248	18/05/2020	0.258	0.258	0.258	0.258	0.258	300@0.230	63@0.258	---	---	100	3	25.80	2,122.34	0.171	0.525	10101015
8,298,467	0.400	---	---	---	30/08/1993	08/05/2013	---	IDEAL GROUP SA (CR)	1.1	---	1.1	18/05/2020	1.01	1	1.1	1.1	1.044	250@1.00	1410@1.09	---	---	1,368	7	1,428.00	9,128.31	0.82	1.42	10102030
8,424,900	0.500	---	---	---	12/07/2010	04/07/2019	---	INTERTECH SA (CR)	0.493	-0.20 €	0.494	18/05/2020	0.493	0.493	0.493	0.493	0.493	1000@0.444	285@0.493	---	2018	200	1	98.60	4,153.48	0.402	0.925	50205010
14,679,792	1.68	---	---	---	28/06/2017	04/09/2000	---	KARATZIS SA (CR)	10	---	10	18/05/2020	10	10	10	10	1099015@10.00	---	---	---	---	73	3	730.00	146,797.92	7.95	10.2	50203030
19,804,134	0.300	---	---	---	01/07/2004	06/11/2017	---	KEKROPS SA (CR)	1.488	-1.33 €	1.508	18/05/2020	1.51	1.45	1.54	1.488	1.482	100@1.46	788@1.49	---	2018	4,483	29	6,642.74	29,468.55	0.87	2.175	35101010
6,700,000	0.800	0.028	0.043	---	24/07/2019	29/05/2014	---	MILLS KEPENOS (CR)	1.93	4.89 #	1.84	18/05/2020	1.89	1.86	1.93	1.93	1.876	177@1.88	350@1.93	9.47	2019	1,073	7	2,012.48	12,931.00	1.56	2.58	45102020
40,219,218	0.260	---	---	---	02/07/2018	10/06/2019	---	KLOUKINAS - LAPPAS SA (CR)	0.506	3.69 #	0.488	18/05/2020	0.499	0.48	0.506	0.506	0.487	130@0.488	150@0.495	---	---	24,040	19	11,712.63	20,350.92	0.352	0.834	50101010
11,510,102	0.890	---	---	---	24/06/2005	06/10/1999	---	NAFPAKTOS TEXTILE (CR)	0.775	1.97 #	0.76	18/05/2020	0.775	0.775	0.775	0.775	0.775	500@0.670	150@0.770	---	---	27	1	20.93	8,920.33	0.448	0.92	55101020
21,224,340	0.420	0.005	---	---	10/09/2018	25/04/2006	---	KORDELLOS BROS SA (CR)	0.207	---	0.207	18/05/2020	---	---	---	---	---	100@0.198	4000@0.207	---	2018	---	---	---	4,393.44	0.161	0.472	55102010
33,065,136	0.380	0.115	0.15	---	22/08/2019	16/09/2013	---	KRI-KRI S.A. (CR)	5.14	---	5.14	18/05/2020	5.18	5.02	5.18	5.14	5.08	5@5.08	300@5.16	16.79	2018	2,295	21	11,657.82	169,954.80	3.46	5.68	45102020
7,595,160	0.600	0.0263	0.0263	---	10/09/2019	18/08/2010	---	KIRIAKOULIS SHIPPING SA (CR)	1.17	-0.85 €	1.18	18/05/2020	1.185	1.16	1.185	1.17	1.184	150@1.12	540@1.17	---	---	240	9	284.15	8,886.34	0.85	2.38	40501015
6,200,000	0.500	---	---	---	22/06/2010	01/11/1995	---	MINERVA KNITWEAR (CR)	0.334	---	0.334	18/05/2020	---	---	---	---	---	3398@0.250	289@0.330	---	---	---	---	---	2,070.80	0.216	0.775	40204020
17,120,280	0.940	---	---	---	01/06/2010	02/08/2019	---	LOULIS MILLS SA (CR)	2.88	4.35 #	2.76	18/05/2020	2.88	2.88	2.88	2.88	2.88	200@2.76	98@2.88	---	---	52	2	149.76	49,306.41	2.56	3.74	45102020
9,819,370	0.690	---	---	---	14/08/2007	09/01/2004	---	MATHIOS REFRACTORY SA (CR)	0.444	3.26 #	0.43	18/05/2020	0.444	0.444	0.444	0.444	0.444	270@0.340	100@0.444	---	---	40	1	17.76	4,359.80	0.32	0.73	55101000
29,250,000	0.360	---	---	---	02/06/2009	25/04/2019	---	MOTODYNAMICS S.A. (CR)	0.828	-3.04 €	0.854	18/05/2020	0.804	0.802	0.844	0.828	0.829	10@0.806	121@0.828	---	---	1,539	10	1,276.59	24,219.00	0.725	1.79	40401030
32,188,050	1.04	---	---	---	21/07/2008	20/01/2000	---	MOUZAKIS (CR)	0.356	0.28 #	0.355	18/05/2020	0.355	0.344	0.378	0.356	0.349	1000@0.344	2790@0.356	---	---	4,142	14	1,445.66	11,458.95	0.256	0.515	55101020
8,321,682	0.670	---	---	---	17/08/2007	23/11/1999	---	N. LEVENTERIS (CR)	0.18	---	0.18	18/05/2020	---	---	---	---	---	700@0.126	3100@0.180	---	2018	---	---	---	2,038.03	0.14	0.224	50203000
2,160,524	0.670	0.0436	---	---	03/12/2018	23/11/1999	---	N. LEVENTERIS (PR)	0.25	---	0.25	18/05/2020	---	---	---	---	---	---	---	---	2018	---	---	---	2,038.03	0.175	0.25	50203000
294,016,812	0.300	---	---	---	08/07/2008	21/03/2016	---	NIREFS SA (CR)	0.23	---	0.23	18/05/2020	0.23	0.23	0.23	0.23	0.23	23571750@0.230	---	---	---	9,464	5	2,176.72	67,623.87	0.23	0.24	45102010
10,080,000	3.00	0.45	0.57	---	02/07/2019	27/08/2001	---	TPA SA (CR)	20.2	---	20.2	18/05/2020	20.2	20.1	20.4	20.2	20.215	105@20.00	4800@20.20	11.87	2018	6,740	24	136,251.00	203,616.00	18.05	28.2	50206060
4,971,466	1.46	---	---	---	04/07/2007	08/10/2003	---	PAIRIS SA (CR)	0.312	0.65 #	0.31	18/05/2020	0.314	0.26	0.314	0.312	0.313	100@0.310	445@0.312	---	---	561	7	175.58	1,551.10	0.21	0.5	50203030
25,118,410	0.560	---	---	---	17/08/2000	29/04/2020	---	PAPOUTSANIS (CR)	1.8	1.41 #	1.775	18/05/2020	1.82	1.75	1.82	1.8	1.787	1290@1.76	398@1.79	40.91	2018	3,137	20	5,605.65	45,213.14	0.96	1.82	45201020
17,175,776	0.370	---	---	---	14/07/2005	30/09/2003	---	PERSEUS SA (CR)	1.15	---	1.15	18/05/2020	---	---	---	---	---	362430@1.15	---	6.39	2019	---	---	---	19,752.14	1.15	1.16	45102010
7,070,400	0.930	---	---	---	30/11/2016	06/05/2016	---	PETROPOULOS PETROS (CR)	5.9	---	5.9	18/05/2020	5.95	5.85	5.95	5.9	5.9	50@5.50	264@5.90	---	---	1,166	13	6,878.90	41,715.36	4.9	8.05	50206015
22,075,665	0.330	0.07	0.07	---	30/05/2019	27/04/2015	---	PLAISIO COMPUTERS SA (CR)	2.9	---	2.9	18/05/2020	2.9	2.84	2.9	2.9	2.887	65@2.84	11980@2.90	---	---	5,010	31	14,465.65	64,019.43	1.885	3.84	40401010
43,741,452	0.660	0.0471	0.0444	---	20/06/2019	01/11/1999	---	THRACE PLASTICS SA (CR)	1.71	-2.84 €	1.76	18/05/2020	1.758	1.71	1.76	1.71	1.728	1018@1.71	2590@1.73	---	---	28,972	120	50,070.21	74,797.88	1.23	2.15	50203015
21,912,599	0.300	---	---	---	11/04/2011	23/02/2007	---	REVOIL (CR)	0.6	-4.15 €	0.626	18/05/2020	0.602	0.584	0.61	0.6	0.599	300@0.580	1649@0.600	8.97	2018	36,027	27	21,591.29	13,147.56	0.55	0.975	60101020
28,438,268	0.300	---	---	---	21/08/2006	24/11/1999	---	SPIROY AGRICULTURE SA (CR)	0.182	1.11 #	0.18	18/05/2020	0.181	0.177	0.187	0.182	0.184	100@0.182	2500@0.210	---	---	1,190	18	218.62	5,175.76	0.093	0.278	45102010
40,693,350	5.00	---	---	---	03/07/2006	26/05/2015	---	TECHNICAL OLYMPIC SA (CR)	1.618	-0.74 €	1.63	18/05/2020	1.65	1.588	1.662	1.618	1.62	100@1.59	345@1.61	---	---	13,104	59	21,226.60	65,841.84	1.15	2.68	40202010
1,524,000	0.300	---	---	---	06/07/2007	06/02/2013	---	GIRAKIAN PROFIL (CR)	2.48	---	2.48	18/05/2020	---	---	---	---	---	100@2.00	120@2.46	---	2018	---	---	---	3,779.52	1.2	4.28	55102010
10,203,575	0.730	---	---	---	16/07/2007	18/10/1999	---	FIERATEX SA (CR)	0.462	-2.53 €	0.474	18/05/2020	0.474	0.42	0.48	0.462	0.446	100@0.421	364@0.462	46.67	2018	3,666	17	1,635.44	4,714.05	0.32	0.79	55101020
8,340,750	1.16	---	---	---	25/06/2009	17/09/2018	---	HAIDEMENOS SA (CR)	0.565	0.89 #	0.56	18/05/2020	0.555	0.55	0.64	0.565	0.56	250@0.550	590@0.565	---	2019	4,283	14	2,398.19	4,712.52	0.462	1.09	50205030

Main Market - Low Liquidity Class

14,000,000	4.15	---	---	---	23/04/2010	29/06/1999	---	ALPHA REAL ESTATE SA(CR)	6.4	---	6.4	18/05/2020	6.6	6.6	6.8	6.8	6.667	100@6.10	1876@6.70	---	---	15	2	100.00	89,600.00	5.2	7.8	35101015
215,805,843	0.300	---	0.05	---	17/01/2020	29/12/2010	---	ATTICA HOLDINGS (CR)	0.9	---	0.9	18/05/2020	0.912	0.86	0.912	0.89	0.901	937@0.860	2760@0.890	---	---	573	6	516.12	194,225.26	0.83	1.465	40501015
109,169,707	0.500	---	---	---	25/04/2014	19/07/2019	---	TRASTOR REAL EST. INV. CO.(CR)	0.82	-0.61 €	0.825	18/05/2020	0.8	0.8	0.84	0.83	0.817	250@0.820	666@0.895	26.02	2018	772	7	630.80	89,519.16	0.78	1.14	35102000
15,300,000	0.300	---	---	---	30/07/2009	13/12/1999	---	ATTICA PUBLICATIONS SA (CR)	0.3	---	0.3	18/05/2020	---	---	---	---	---	250@0.270	171767@0.300	---	---	---	---	---	4,590.00	0.298	0.428	40301030
8,418,750	0.300	0.28	0.32	---	12/06/2019	27/06/2012	---	GEKE (CR)	3.7	---	3.7	18/05/2020	---	---	---	---	---	300@3.70	---	10.26	2018	---	---	---	31,149.38	3.36	5.7	40501025

Number of Outstanding Securities	Nominal Value	Dividends [1]			Date of Last Coupon		Note	Shares	Closing price	% change	Previous closing price/date	Open price	Price min	Price max	Last price	Avg price	Last Bid [7]	Last Ask [7]	P/E after tax	Year	Volume	Trades	Transactions Value[8]	Company Mkt Value (thou. €)	Year low	Year high	Sector[4]	
15,000,000	0.300	---	---	---	06/07/2007	18/07/2000	---	DAIOS PLASTICS SA (CR)	3	---	3	18/05/2020	---	---	---	---	300@2.74	235@3.30	---	---	---	---	---	45,000.00	2.62	3.28	50203015	
3,307,500	0.210	---	---	---	11/08/2010	04/12/2019	---	ELVE SA (CR)	3.26	---	3.26	18/05/2020	---	---	---	---	29@3.12	604@3.58	---	---	---	---	---	10,782.45	2.94	4.5	40204020	
23,828,130	0.500	0.06	0.05	---	22/07/2019	17/02/2009	---	ELINOIL S.A. (CR)	1.68	5.00 #	1.6	18/05/2020	1.65	1.65	1.68	1.68	1.67	500@1.46	100@1.66	---	---	872	3	1,456.17	40,031.26	1.35	1.9	60101020
86,735,980	0.310	---	---	---	06/07/2009	02/01/2002	---	ATHENS MEDICAL CENTER SA (CR)	1.49	---	1.49	18/05/2020	1.49	1.49	1.5	1.49	1.492	300@1.41	20@1.52	---	---	4,336	13	6,467.84	129,236.61	1.09	2.35	20101025
2,566,836	0.440	---	---	---	13/08/2010	09/01/2007	---	INTERWOOD-XYLEMPORIA (PR)	0.3	---	0.3	18/05/2020	---	---	---	---	---	5674@0.270	---	---	---	---	---	6,577.80	0.27	0.382	50205010	
34,986,430	0.440	---	---	---	25/07/2008	23/02/2010	---	INTERWOOD-XYLEMPORIA (CR)	0.166	---	0.166	18/05/2020	0.15	0.15	0.15	0.15	0.15	---	647@0.150	---	---	500	1	75.00	6,577.80	0.125	0.187	50205010
9,742,920	0.400	---	---	---	12/08/2016	14/07/2000	---	KARAMOLEGOS SA (CR)	1.54	---	1.54	18/05/2020	---	---	---	---	---	100@1.68	---	---	---	---	---	15,004.10	1.24	2.14	45102020	
2,760,000	11.83	9.2	9.5	---	01/07/2019	16/07/1990	---	KARELIA (CR)	258	---	258	18/05/2020	258	258	258	258	8@252.00	29@258.00	---	---	25	3	6,450.00	712,080.00	228	302	45103010	
18,017,472	0.360	---	---	---	15/06/2010	28/08/2017	---	KTIMA KOSTAS LAZARIDIS SA (CR)	1.11	0.91 #	1.1	18/05/2020	1.15	1.03	1.15	1.11	1.05	540@1.04	24@1.11	---	---	1,611	16	1,692.03	19,999.39	0.91	1.55	45101015
21,364,000	1.12	0.2	0.2	---	29/07/2019	10/08/2005	---	LAMPASA HOTEL SA (CR)	19.9	---	19.9	18/05/2020	---	---	---	---	---	200@19.70	1@20.00	---	---	---	---	---	425,143.60	17.5	20.6	40501025
5,939,268	0.620	---	---	---	10/07/2003	03/01/2002	---	LANAKAM SA (CR)	0.93	---	0.93	18/05/2020	---	---	---	---	---	---	443@0.930	---	2018	---	---	---	5,523.52	0.93	1.3	40401020
6,340,000	0.600	---	0.05	0.06	14/02/2020	02/12/2019	---	NAKAS MUSIC	1.57	---	1.57	18/05/2020	---	---	---	---	---	---	415@1.62	---	---	---	---	---	9,953.80	0.93	2.66	40401030
27,379,200	0.300	0.148	0.294	---	16/08/2019	24/08/2018	---	CRETE PLASTICS SA (CR)	10.9	-0.91 €	11	18/05/2020	11	10.8	11.1	10.9	10.886	380@10.85	140@10.90	---	---	5,930	14	64,554.00	298,433.28	8.55	14.9	50203015
255,494,534	3.00	0.22	0.286	0.613	16/04/2020	23/12/2015	---	PRODEA (CR)	8	---	8	18/05/2020	8	8	8	8	8	446@8.00	726@8.30	---	---	404	3	3,232.00	2,043,956.27	6.05	8.35	35102000
4,181,450	0.500	---	---	---	21/08/2000	05/03/2002	---	FLOUR MILLS SARANTOPOULOS SA	1.92	---	1.92	18/05/2020	---	---	---	---	---	---	83@1.91	---	---	---	---	---	8,028.38	1.19	3.3	45102020

Exchange Traded Funds (ETFs)

812,382	---	---	---	---	15/06/2016	---	---	ALPHA ETF FTSE Athex Large Cap	15.05	-0.46 €	15.12	18/05/2020	15.4	14.98	15.4	15.05	14.993	100@12.00	---	---	---	145	7	2,173.92	---	11.3	24.5	12003
---------	-----	-----	-----	-----	------------	-----	-----	--------------------------------	-------	---------	-------	------------	------	-------	------	-------	--------	-----------	-----	-----	-----	-----	---	----------	-----	------	------	-------

Surveillance

5,867,311	0.300	---	---	---	11/08/2010	28/04/2017	5123	DIONIC (CR)	0.12	---	0.12	18/05/2020	0.12	0.12	0.12	0.12	0.12	900@0.120	---	---	---	100	1	12.00	704.08	0.1	0.244	50205010	
172,599,567	0.300	---	---	---	19/09/2016	---	5161	Forthnet (CR)	0.36	---	0.36	18/05/2020	0.36	0.36	0.36	0.36	0.36	5000@0.340	5345@0.360	---	---	9,000	4	3,240.00	62,135.84	0.186	0.448	15102015	
355,437,751	0.100	---	---	---	07/07/2010	21/09/2017	5160	FRIGOGLASS SA (CR)	0.112	---	0.112	18/05/2020	0.115	0.112	0.115	0.112	0.113	20000@0.110	46502@0.112	---	---	163,498	36	18,551.78	39,809.03	0.09	0.28	50204000	
51,081,030	1.00	---	---	---	20/08/2007	03/09/2007	4912	LAVIPHARM SA (CR)	0.28	---	0.28	18/05/2020	0.28	0.28	0.28	0.28	0.28	3300@0.280	2050@0.284	---	---	16,700	5	4,676.00	14,302.69	0.208	0.338	20103015	
1,870,992	0.500	---	---	---	21/05/2008	27/03/2020	5231	PASAL DEVELOPMENT S.A. (CR)	0.845	---	0.845	18/05/2020	---	---	---	---	---	---	400@0.850	---	---	---	---	---	1,580.99	0.52	1.256	35101010	
65,326,268	0.530	---	---	---	04/07/2007	19/07/2006	4750	SATO SA (CR)	0.0155	---	0.0155	18/05/2020	---	---	---	---	---	7000@0.013	3000@0.019	---	---	---	---	---	1,012.56	0.013	0.0345	40202015	
13,191,620	0.620	---	---	---	04/08/2010	09/09/2002	5232	YALCO - CONSTANTINOU (CR)	0.064	---	0.064	18/05/2020	---	---	---	---	---	---	113@0.070	---	---	---	---	---	844.26	0.05	0.0795	40202020	
33,301,715	0.320	---	---	---	27/06/2003	08/07/2009	5195	AEGEK (CR)	0.034	---	0.034	18/05/2020	0.035	0.0295	0.035	0.035	0.035	7900@0.030	4210@0.035	---	---	5,321	4	186.21	1,132.26	0.0245	0.06	50101010	
13,000,000	1.00	---	---	---	01/08/2007	07/04/2000	5093	AKRITAS SA (CR)	0.272	---	0.272	18/05/2020	---	---	---	---	---	100@0.272	---	---	---	---	---	---	---	3,536.00	0.272	0.5	50101035
185,373,016	0.300	---	---	---	02/07/2008	28/02/2011	4957	ANEK LINES SA (CR)	0.05	3.09 #	0.0485	18/05/2020	0.0485	0.046	0.05	0.05	0.05	2465@0.046	12971@0.050	---	---	97,340	23	4,833.90	9,588.10	0.03	0.072	40501015	
312,163	0.300	---	---	---	02/07/2008	28/02/2011	4959	ANEK LINES SA (PR, Issue '90)	0.072	---	0.072	18/05/2020	---	---	---	---	---	---	---	---	---	---	---	---	---	9,588.10	0.058	0.072	40501015
2,969,713	0.300	---	---	---	02/07/2008	28/02/2011	4958	ANEK LINES SA (PR, Issue '96)	0.1	---	0.1	18/05/2020	---	---	---	---	---	---	---	---	---	---	---	---	---	9,588.10	0.08	0.1	40501015
4,737,503	0.320	---	---	---	22/06/2005	22/09/2015	5115	VARANGIS AVEPE S.A. (CR)	0.128	---	0.128	18/05/2020	---	---	---	---	---	---	4556@0.103	---	---	---	---	---	606.40	0.103	0.16	40202015	
6,330,002	0.300	---	---	---	25/06/2002	15/03/2019	5162	VARARESSOS (CR)	0.398	---	0.398	18/05/2020	---	---	---	---	---	---	121@0.398	---	2018	---	---	---	2,519.34	0.282	0.525	55101020	
17,579,754	4.16	---	---	---	18/08/2006	02/08/2010	5156	BIOTER SA (CR)	0.08	---	0.08	18/05/2020	---	---	---	---	---	---	5000@0.080	4500@0.090	---	---	---	---	---	1,406.38	0.041	0.082	50101010
15,878,748	0.480	---	---	---	10/07/2006	22/03/2004	5095	DOMIKI KRITIS SA (CR)	0.141	---	0.141	18/05/2020	---	---	---	---	---	---	6962@0.115	2472@0.160	---	---	---	---	---	2,238.90	0.115	0.23	50101010
3,961,300	1.28	---	---	---	29/06/2004	03/08/2000	5080	DUROS SA (CR)	0.17	---	0.17	18/05/2020	---	---	---	---	---	---	2600@0.204	---	2018	---	---	---	673.42	0.125	0.27	40204020	
51,754,364	0.300	---	---	---	23/12/2003	24/01/2007	5197	SELECTED TEXT. IND. ASSOC (CR)	0.15	---	0.15	18/05/2020	0.158	0.158	0.158	0.158	0.158	800@0.123	600@0.158	---	---	400	1	63.20	7,763.15	0.117	0.25	55101020	
11,125,110	0.300	---	---	---	02/06/2010	06/11/2017	5178	EUROCONSULTANTS S.A. (CR)	0.242	---	0.242	18/05/2020	---	---	---	---	---	---	---	500@0.288	---	---	---	---	---	2,692.28	0.165	0.34	50205020

Number of Outstanding Securities	Nominal Value	Dividends [1]			Date of Last Coupon		Note	Shares	Closing price	% change	Previous closing price/date	Open price	Price min	Price max	Last price	Avg price	Last Bid [7]	Last Ask [7]	P/E after tax	Year	Volume	Trades	Transactions Value[8]	Company Mkt Value (thou. €)	Year low	Year high	Sector[4]	
		2017	2018	2019	Dividend [2]	Right																						
7,125,216	0.650	---	---	---	01/07/2005	14/12/1999	4955	KRE.KA SA (CR)	0.228	---	0.228	18/05/2020	---	---	---	---	1000@0.200	885@0.230	---	2018	---	---	---	1,624.55	0.058	0.24	45102010	
7,734,375	1.00	---	---	---	09/07/2007	07/01/2011	5112	LIVANIS SA (CR)	0.0505	---	0.0505	18/05/2020	---	---	---	---	---	2000@0.061	---	---	---	---	---	390.59	0.0505	0.116	40301030	
15,842,391	1.51	---	---	---	15/07/2009	12/05/2000	5141	BITROS HOLDING SA (CR)	0.172	---	0.172	18/05/2020	---	---	---	---	---	390@0.162	---	---	---	---	---	2,724.89	0.092	0.19	55102010	
119,596,817	0.040	---	---	---	15/07/2008	27/04/2017	5190	NIKAS SA (CR)	0.6	---	0.6	18/05/2020	---	---	---	---	---	9@0.600	---	---	---	---	---	71,758.09	0.4	0.6	45102020	
24,319,250	0.300	---	---	---	09/07/2002	04/07/2007	5165	PROODEFTIKH SA (CR)	0.17	---	0.17	18/05/2020	0.136	0.136	0.136	0.136	0.136	---	10000@0.160	---	---	1,000	1	136.00	4,134.27	0.11	0.206	50101010
245,497,664	0.310	---	---	---	01/07/2008	30/07/2012	5207	SELONDA AQUACULTURE SA (CR)	0.1	---	0.1	18/05/2020	0.1	0.1	0.1	0.1	0.1675080@0.100	---	---	---	3,349	1	334.90	24,549.77	0.1	0.101	45102010	
10,186,667	1.35	---	---	---	24/06/2008	02/02/2016	4887	SIDMA SA (CR)	0.39	---	0.39	18/05/2020	---	---	---	---	3510@0.346	509@0.462	---	---	---	---	---	3,972.80	0.192	0.57	55102010	
766,000	1.00	---	---	---	01/07/2004	11/12/2012	5193	TRIA ALFA SA (CR)	1.8	---	1.8	18/05/2020	---	---	---	---	---	---	55.15	2018	---	---	---	1,658.10	1.44	2.16	55101020	
245,000	1.00	---	---	---	19/07/2010	11/12/2012	5194	TRIA ALFA SA (PR)	1.14	---	1.14	18/05/2020	---	---	---	---	---	110@1.36	34.93	2018	---	---	---	1,658.10	0.9	1.17	55101020	

Suspension Status

20,255,805	0.300	---	---	---	22/08/2006	02/08/2010	5136	AXON HOLDING SA (CR)	0.058	---	0.058	28/04/2017	---	---	---	---	---	---	---	---	---	---	---	1,174.84	0.058	0.058	20101010
21,820,410	0.800	---	---	---	22/05/2008	02/08/2011	5174	EUROMEDICA SA (CR)	0.448	---	0.448	30/04/2018	---	---	---	---	---	---	---	---	---	---	---	9,775.54	0.448	0.448	20101010
66,948,210	0.300	---	---	---	22/09/2015	22/09/2015	5179	FOLLI FOLLIE (CR)	4.8	---	4.8	24/05/2018	---	---	---	---	---	---	---	---	---	---	---	321,351.41	4.8	4.8	40401030
12,417,000	0.310	---	0.0205	---	27/08/2019	28/08/2017	5233	MLS MULTIMEDIA SA (CR)	0.57	---	0.57	12/05/2020	---	---	---	---	---	4000@0.638	---	---	---	---	---	7,077.69	0.475	1.51	10101015
14,870,100	0.300	---	---	---	15/05/2008	26/09/2011	5130	ALPHA GRISSIN S.A. (CR)	0.014	---	0.014	13/04/2017	---	---	---	---	---	---	---	---	---	---	---	208.18	0.014	0.014	10102030
33,930,000	0.300	---	---	---	03/07/2006	30/05/2001	4865	BABIS VOVOS SA (CR)	0.304	---	0.304	30/03/2012	---	---	---	---	---	---	---	---	---	---	---	10,314.72	0.304	0.304	35101010
77,126,446	0.340	---	---	---	23/05/2005	18/08/2011	5206	G.E. DIMITRIOU (CR)	0.0125	---	0.0125	30/04/2019	---	---	---	---	---	---	---	---	---	---	---	964.08	0.0125	0.0125	40202020
6,000,000	0.600	---	---	---	13/06/2008	08/04/2004	5172	EUROBROKERS S.A. (CR)	0.008	---	0.008	27/04/2018	---	---	---	---	---	---	---	---	---	---	---	48.00	0.008	0.008	30302015
7,085,888	1.59	---	---	---	02/07/1996	06/09/2010	5216	ELVIEMEK (CR)	2.6	---	2.6	30/09/2019	---	---	---	---	---	---	---	---	---	---	---	18,423.31	2.6	2.6	35101010
25,179,640	0.600	---	---	---	08/08/1994	19/09/2000	5191	J.BOUTARIS & SON (CR)	0.026	---	0.026	01/10/2018	---	---	---	---	---	---	---	---	---	---	---	742.45	0.026	0.026	45101015
1,540,000	0.600	---	---	---	08/08/1994	19/09/2000	5192	J.BOUTARIS & SON (PR)	0.057	---	0.057	01/10/2018	---	---	---	---	---	---	---	---	---	---	---	742.45	0.057	0.057	45101015
24,619,524	0.500	---	---	---	10/10/1986	30/12/2002	4914	KERAMIA-ALLATINI (CR)	0.088	---	0.088	30/08/2012	---	---	---	---	---	---	---	---	---	---	---	2,166.52	0.088	0.088	35101010
31,543,600	0.420	---	---	---	19/07/2010	19/12/2018	5205	KRETA FARM SA (CR)	1.085	---	1.085	30/04/2019	---	---	---	---	---	---	---	---	---	---	---	34,224.81	1.085	1.085	45102020
23,935,280	0.300	---	---	---	29/06/2009	13/06/2000	5153	NAYTEMPORIKI PUBLISHING SA(CR)	0.107	---	0.107	02/10/2017	---	---	---	---	---	---	---	---	---	---	---	2,561.07	0.107	0.107	40301030
255,459,600	0.300	---	---	---	26/06/2000	03/12/2010	5101	NEL SA (CR)	0.07	---	0.07	31/08/2015	---	---	---	---	---	---	---	---	---	---	---	17,882.17	0.07	0.07	40501015
23,463,874	0.800	---	---	---	23/05/2003	21/12/1999	4918	NEORION SA (CR)	0.125	---	0.125	30/08/2012	---	---	---	---	---	---	---	---	---	---	---	2,932.98	0.125	0.125	50206030
18,750,000	0.300	---	---	---	02/07/2001	31/12/2012	5154	PEGASUS PUBLISHING S.A. (CR)	0.089	---	0.089	02/10/2017	---	---	---	---	---	---	---	---	---	---	---	1,668.75	0.089	0.089	40301030
100,793,572	0.300	---	---	---	16/07/2009	11/02/2016	5110	TELETIPOS SA (CR)	0.06	---	0.06	07/03/2016	---	---	---	---	---	---	---	---	---	---	---	6,047.61	0.06	0.06	40301035
4,034,950	0.680	---	---	---	01/07/2005	30/12/2010	5171	CHATZIKRANIOTIS & SONS SA (CR)	0.14	---	0.14	27/04/2018	---	---	---	---	---	---	---	---	---	---	---	564.89	0.14	0.14	45102020

Shares' Notes

Code	Note text
()	- Adjusted dividends.
*	- Last adjusted closing price.
[1]	- Net dividends.
[2]	- The "Date of Last Coupon" for New listings refers to the date company's stocks started to trade in Athex
[3]	- The Company Market Value is referred to the number of outstanding shares
[4]	- Sectors codification can be found in Appendix A
[5]	- The Market Value refers to the total number of shares listed (including their several classes) in the exchange by the company.
[6]	- P/E greater than 100
[7]	- Last view of the Order Book before the end of the trading session
[8]	- All Blocks Methods' Transactions Value are included.
4750	- Transfer to the Under Surveillance Category from 8/4/2011.
4865	- Suspension of trading as of 2/4/2012.
4887	- Transfer to the Surveillance Category as of 10/4/2012.
4912	- Transfer to the Surveillance Category as of 31/7/2012.
4914	- Suspension of trading as of 31/8/2012.
4918	- Suspension of trading as of 31/8/2012.
4955	- Transfer to the Surveillance Category as from 5/4/2013.
4957	- Transfer to the Surveillance Category as from 5/4/2013.
4958	- Transfer to the Surveillance Category as from 5/4/2013.
4959	- Transfer to the Surveillance Category as from 5/4/2013.
5080	- Transfer to the Surveillance Category as of 05/12/2014.
5093	- Transfer to the Surveillance Category as of 8/4/2015.
5095	- Transfer to the Surveillance Category as from 09/04/2015.
5101	- Suspension of trading as of 1/9/2015.
5110	- Suspension of trading as of 08/03/2016.
5112	- Transfer to the Surveillance Category as of 15/04/2016.
5115	- Transfer to the Surveillance Category as of 15/04/2016.
5123	- Transfer to the Surveillance Category as of 01/04/2016.
5130	- Suspension of trading as of 18/04/2017.
5136	- Suspension of trading as of 02/05/2017.
5141	- Transfer to the Surveillance Category as of 10/05/2017.
5153	- Suspension of trading as of 03/10/2017.
5154	- Suspension of trading as of 03/10/2017.
5156	- Transfer to the Surveillance Category as of 11/12/2017.
5160	- Transfer to the Surveillance Category as of 15/04/2016.
5161	- Transfer to the Surveillance Category as of 25/11/2011.
5162	- Transfer to the Under Supervision Category as of 21/12/2009.
5165	- Transfer to the Surveillance Category as of 15/02/2018.
5171	- Suspension of trading as of 30/04/2018.
5172	- Suspension of trading as of 30/04/2018.
5174	- Suspension of trading as of 02/05/2018.
5178	- Transfer to the Surveillance Category as of 11/05/2018.
5179	- Suspension of trading as of 25/05/2018.
5190	- Transfer to the Surveillance Category as of 01/10/2018.
5191	- Suspension of trading as of 02/10/2018.
5192	- Suspension of trading as of 02/10/2018.
5193	- Transfer to the Surveillance Category as of 25/10/2018.
5194	- Transfer to the Surveillance Category as of 25/10/2018.
5195	- Transfer to the Surveillance Category as of 25/10/2018.
5197	- Transfer to the Surveillance Category as of 07/11/2018.
5205	- Suspension of trading as of 02/05/2019.

Shares' Notes

Code	Note text
5206	- Suspension of trading as of 02/05/2019.
5207	- Transfer to the Surveillance Category as from 13/05/2019.
5216	- Suspension of trading as of 01/10/2019.
5231	- Transfer to the Surveillance Category as from 5/4/2013.
5232	- Transfer to the Under Surveillance Category from 08/04/2011.
5233	- Suspension of trading as of 13/05/2020.

Securities Blocks Details

Securities	Block Volume	Price	Block Trade Value	Time of approval	Note
EUROBANK HOLDINGS (CR)	1,500,000	0.326	489,450.00	10:53:34	20
EUROBANK HOLDINGS (CR)	1,750,000	0.327	572,600.00	10:54:13	20
OTE (CR)	48,000	12.28	589,296.00	12:25:57	20
EUROBANK HOLDINGS (CR)	1,000,000	0.313	313,000.00	12:54:40	20
MYTILINEOS (CR)	50,000	6.80	340,000.00	13:40:20	20
TITAN CEMENT (CB)	10,433	10.84	113,089.55	13:46:43	14
JUMBO SA (CR)	76,216	15.17	1,156,196.72	14:22:11	20
EUROBANK HOLDINGS (CR)	2,143,413	0.306	655,884.38	15:31:19	20
EUROBANK HOLDINGS (CR)	1,300,000	0.306	397,800.00	15:54:10	20
EUROBANK HOLDINGS (CR)	2,143,413	0.306	655,884.38	17:12:57	20
NATIONAL BANK (CR)	1,400,000	0.953	1,334,200.00	17:14:19	20
EUROBANK HOLDINGS (CR)	5,000,000	0.306	1,530,000.00	17:15:15	20
EUROBANK HOLDINGS (CR)	2,389,498	0.306	731,186.39	17:16:34	20

Blocks Notes

- 9 - Method 6-1 / Special Fees
- 10 - Method 6-1 / Special Fees, SDS
- 14 - Method 6-3 / Settlement, Incomplete Buy and Sell
- 18 - Method 6-2 / SPOT 1
- 19 - Method 6-2 / SPOT 2
- 20 - Method 6-1 and Method 6-1 Same Day Settlement
- 21 - Other Pre-agreed

Shares Rights Details

Occured date	Exercise from	Exercise until	Trading until	Rights	Price min	Price max	Closing price	Last Bid	Last Ask	Volume	Trades	Transactions Value
--------------	---------------	----------------	---------------	--------	-----------	-----------	---------------	----------	----------	--------	--------	--------------------

No Rights Transactions.

Securities Forced Sales

Securities	Category of Security	Transactions Volume	Number of Trades	Transactions Value	Note
------------	----------------------	------------------------	---------------------	-----------------------	------

No Forced Transactions.

Forced Sales Notes

- 1 - Normal Forced Sale.
- 2 - Forced Sales of Fixed Registered Shares.
- 3 - Forced Sales of Remaining Stock Fractions.

Forced Sales Registered Shares

Securities	Start Date	End Date	Initial Volume	Remaining Volume	Date	Avg price (day)	Avg price (period)	Number of Trades	Transactions Volume	Transactions Value
------------	------------	----------	----------------	------------------	------	-----------------	--------------------	------------------	---------------------	--------------------

No Fixed Registered Shares Forced Sales.

Forced Sales Notes

According to Decision 1/380/04.05.2008 of the Hellenic Republic Capital Market Commission, the certificated registered shares that have not been deposited to the issuer for dematerialisation, will be auctioned in the Athens Exchange by the supervising issuer. Forced sales procedure is held according to Article 99A of the Athens Exchange Rulebook. The average price of the period is calculated by dividing the Total transactions value by the Total volume and includes all the transactions made until the current date.

Exchange Traded Funds (ETFs) Characteristics

	Transactions Date (T)	Creation / Redemption	Units (T-1)	New Units (T-1)	Redemption Units (T-1)	Units (T) [1]	Fund Assets [2]	Net Unit Price	Dividend per Unit	Dividend Date
ALPHA ETF FTSE Athex Large Cap	19/05/2020	5,000	812,382	---	---	812,382	12,352,380.00	15.2051	0.43	30/06/2018

ETFs Notes

[1] - Units (T) = Units (T-1) + New Units (T-1) - Redemption Units (T-1)

[2] - The Creation / Redemption Units of T-1 are included.

Convertible Corporate Bonds - Regulated Market

Num Listed Bonds	Nominal price	Issue price	Today's Rate	Exp. Date	Duration (years)	Note	Coupon		Trading	Corporate Bonds	Price min	Price max	Closing price	Previous closing price/date	Volume	Transactions Value	Last order			ear min	Year max
							Common	Preferred									Price	Buy / Sell	Date		
171,246,551	0.30	0.30	1.00	11/10/2025	9	---	15	---	1	FORTHNET S.A. (Convertible)	---	---	---	---	---	---	10.0000	B	04/05/2020	100.0000	100.0000

Corporate Bonds Notes

Transactions Volume = (Pieces) * (Nominal Price). Transactions Value = (Pieces) * (Nominal Price) * (price %) + (Accrued interest).

The price of a Bond is stated as a percentage (%) of Bond's Nominal Price.

Nominal Price in Euros (€), except if it is noted differently.

Non Convertible Corporate Bonds - Regulated Market

Num Listed Bonds	Nominal price	Issue price	Today's Rate	Exp. Date	Duration (years)	Note	Coupon		Trading	Corporate Bonds	Accrued Int.	Yield.T.Mat	Price min	Price max	Closing price	Previous closing price/date	Volume	Transactions Value	Last order		ear min	Year max		
							Common	Preferred											Price	Buy / Sell			Date	
175,000	1,000.00	1,000.00	3.40	26/07/2024	5	---	2	---	1	ATTICA HOLDINGS S.A. (Non Convertible)	10.8611	11.0450	77.0000	77.0000	77.0000	76.2500	18/05/2020	2,000	1,561.72	77.0000	B	19/05/2020	58.8701	100.0000
300,000	1,000.00	1,000.00	3.10	27/06/2022	5	---	6	---	1	MYTILINEOS HOLDINGS S.A. (Non Convertible)	12.5722	3.4540	98.5000	98.9000	98.6696	98.6000	18/05/2020	217,000	216,841.17	98.6500	B	19/05/2020	88.5000	101.0000
50,000	1,000.00	1,000.00	4.25	20/06/2022	5	---	6	---	1	SYSTEMS SUNLIGHT S.A. (Non Convertible)	18.0625	4.3160	---	---	---	98.8210	18/05/2020	---	---	98.0600	B	19/05/2020	88.0000	102.0000
40,000,000	1.00	1.00	5.00	04/10/2021	5	---	15	---	1	HOUSEMARKET S.A. (Non Convertible)	0.0063	4.6270	99.1500	99.5000	99.3744	99.3990	15/05/2020	64,184	64,183.59	99.1500	B	19/05/2020	93.8736	105.1000
24,260	1,000.00	1,000.00	4.95	26/06/2023	5	---	4	---	1	B&F COMM. & GARM. INDUS. S.A. (Non Convertible)	20.0750	10.0570	83.0210	85.9990	85.5000	84.2710	14/05/2020	26,000	22,484.53	84.2650	B	19/05/2020	68.0000	94.9999
90,000	1,000.00	1,000.00	3.00	11/05/2023	5	---	5	---	1	CORAL A.E. (Non Convertible)	0.8333	2.9960	99.5000	99.5000	99.5000	99.0000	18/05/2020	8,000	7,966.67	99.2000	B	19/05/2020	89.4200	105.0000
120,000	1,000.00	1,000.00	3.95	04/04/2025	7	---	5	---	1	GEK TERNA S.A. (Non Convertible)	4.9375	3.6400	99.5000	100.0000	100.0000	99.9110	18/05/2020	52,000	52,206.75	99.0000	B	19/05/2020	91.0000	107.2000
150,000	1,000.00	1,000.00	2.60	22/10/2026	7	---	2	---	1	TERNA ENERGY FINANCE S.A. (Non Convertible)	2.0944	2.9410	97.0000	97.9000	97.8920	96.3690	18/05/2020	59,000	57,702.77	97.3000	B	19/05/2020	84.4000	102.8000
200,000	1,000.00	1,000.00	3.60	12/03/2026	7	---	3	---	1	AEGEAN AIRLINES S.A. (Non Convertible)	7.0000	7.0630	83.0000	85.0000	84.3084	84.9720	18/05/2020	122,000	103,710.20	82.6000	B	19/05/2020	54.7313	107.3000

Corporate Bonds Notes

Transactions Volume = (Pieces) * (Nominal Price). Transactions Value = (Pieces) * (Nominal Price) * (price %) + (Accrued interest).

The price of a Bond is stated as a percentage (%) of Bond's Nominal Price.

Nominal Price in Euros (€), except if it is noted differently.

Government Bonds

Number Listed Bonds	Nominal price	Today's Rate	Accrued Interest Calc	Exp. Date [1]	Duration (years)	Note	Coupons Date	Curr. coupon value	Trading Unit	Government Bonds	Price min	Price max	Closing price	Previous closing price/date	Volume	Transactions Value	Price	Last order Buy / Sell	Date
3,000,000	1,000.00	4.38	Actual/Actual	01/08/2022	5	---	01/08	4.38	1	GGB-FXD-010822-05Y-4.375-1.000	---	---	---	---	---	---	1.0000	B	28/11/2018
2,500,000	1,000.00	1.88	Actual/Actual	04/02/2035	15	---	04/02	1.88	1	GGB-FXD-040235-15Y-1.875-1.000	---	---	---	---	---	---	---	---	---
2,500,000	1,000.00	3.45	Actual/Actual	02/04/2024	5	---	02/04	3.45	1	GGB-FXD-020424-05Y-3.450-1.000	---	---	---	---	---	---	---	---	---
4,355,990,324	1.00	3.50	Actual/Actual	30/01/2023	5	---	01/02 - 31/01	3.50	1	GGB-FXD-300123-05Y-3.500-1.000	---	---	---	94.5720 13/07/2018	---	---	1.0000	B	28/11/2018
5,962,747,327	1.00	3.75	Actual/Actual	30/01/2028	10	---	/02 - 01/02 - 31/	3.75	1	GGB-FXD-300128-10Y-3.750-1.000	---	---	---	85.4610 13/07/2018	---	---	1.0000	B	28/11/2018
6,091,218,404	1.00	3.90	Actual/Actual	30/01/2033	15	---	/02 - 01/02 - 31/	3.90	1	GGB-FXD-300133-15Y-3.900-1.000	---	---	---	78.6730 13/07/2018	---	---	1.0000	B	28/11/2018
4,805,399,486	1.00	4.00	Actual/Actual	30/01/2037	19	---	/02 - 01/02 - 31/	4.00	1	GGB-FXD-300137-19Y-4.000-1.000	---	---	---	77.0370 13/07/2018	---	---	1.0000	B	28/11/2018
4,603,713,186	1.00	4.20	Actual/Actual	30/01/2042	24	---	/02 - 01/02 - 31/	4.20	1	GGB-FXD-300142-24Y-4.200-1.000	---	---	---	77.7640 13/07/2018	---	---	1.0000	B	28/11/2018
550,418,123	1.00	3.65	Actual/Actual	24/02/2023	11	---	24/02	3.65	1	GGB-FXD-240223-11Y-2.000-1.000	---	---	---	10.0000 22/06/2015	---	---	10.0000	B	11/07/2019
445,007,576	1.00	3.65	Actual/Actual	24/02/2024	12	---	24/02	3.65	1	GGB-FXD-240224-12Y-2.000-1.000	---	---	---	10.0000 22/06/2015	---	---	---	---	---
423,674,226	1.00	3.65	Actual/Actual	24/02/2025	13	---	24/02	3.65	1	GGB-FXD-240225-13Y-2.000-1.000	---	---	---	10.0000 22/06/2015	---	---	---	---	---
212,292,153	1.00	3.65	Actual/Actual	24/02/2026	14	---	24/02	3.65	1	GGB-FXD-240226-14Y-2.000-1.000	---	---	---	10.0000 22/06/2015	---	---	---	---	---
160,621,352	1.00	3.65	Actual/Actual	24/02/2027	15	---	24/02	3.65	1	GGB-FXD-240227-15Y-2.000-1.000	---	---	---	10.0000 22/06/2015	---	---	---	---	---
183,244,055	1.00	3.65	Actual/Actual	24/02/2028	16	---	24/02	3.65	1	GGB-FXD-240228-16Y-2.000-1.000	---	---	---	10.0000 22/06/2015	---	---	---	---	---
164,802,894	1.00	3.65	Actual/Actual	24/02/2029	17	---	24/02	3.65	1	GGB-FXD-240229-17Y-2.000-1.000	---	---	---	10.0000 22/06/2015	---	---	---	---	---
165,460,943	1.00	3.65	Actual/Actual	24/02/2030	18	---	24/02	3.65	1	GGB-FXD-240230-18Y-2.000-1.000	---	---	---	10.0000 22/06/2015	---	---	---	---	---
129,007,241	1.00	3.65	Actual/Actual	24/02/2031	19	---	24/02	3.65	1	GGB-FXD-240231-19Y-2.000-1.000	---	---	---	10.0000 22/06/2015	---	---	---	---	---
126,192,683	1.00	3.65	Actual/Actual	24/02/2032	20	---	24/02	3.65	1	GGB-FXD-240232-20Y-2.000-1.000	---	---	---	10.0000 22/06/2015	---	---	---	---	---
146,905,168	1.00	3.65	Actual/Actual	24/02/2033	21	---	24/02	3.65	1	GGB-FXD-240233-21Y-2.000-1.000	---	---	---	10.0000 22/06/2015	---	---	---	---	---
154,475,606	1.00	3.65	Actual/Actual	24/02/2034	22	---	24/02	3.65	1	GGB-FXD-240234-22Y-2.000-1.000	---	---	---	10.0000 22/06/2015	---	---	---	---	---
144,429,441	1.00	3.65	Actual/Actual	24/02/2035	23	---	24/02	3.65	1	GGB-FXD-240235-23Y-2.000-1.000	---	---	---	10.0000 22/06/2015	---	---	---	---	---
166,211,676	1.00	3.65	Actual/Actual	24/02/2036	24	---	24/02	3.65	1	GGB-FXD-240236-24Y-2.000-1.000	---	---	---	10.0000 22/06/2015	---	---	---	---	---
145,461,669	1.00	3.65	Actual/Actual	24/02/2037	25	---	24/02	3.65	1	GGB-FXD-240237-25Y-2.000-1.000	---	---	---	10.0000 22/06/2015	---	---	---	---	---
146,941,087	1.00	3.65	Actual/Actual	24/02/2038	26	---	24/02	3.65	1	GGB-FXD-240238-26Y-2.000-1.000	---	---	---	10.0000 22/06/2015	---	---	---	---	---
135,115,612	1.00	3.65	Actual/Actual	24/02/2039	27	---	24/02	3.65	1	GGB-FXD-240239-27Y-2.000-1.000	---	---	---	10.0000 22/06/2015	---	---	---	---	---
141,909,637	1.00	3.65	Actual/Actual	24/02/2040	28	---	24/02	3.65	1	GGB-FXD-240240-28Y-2.000-1.000	---	---	---	10.0000 22/06/2015	---	---	---	---	---
136,788,720	1.00	3.65	Actual/Actual	24/02/2041	29	---	24/02	3.65	1	GGB-FXD-240241-29Y-2.000-1.000	---	---	---	10.0000 22/06/2015	---	---	---	---	---
163,643,410	1.00	3.65	Actual/Actual	24/02/2042	30	---	24/02	3.65	1	GGB-FXD-240242-30Y-2.000-1.000	---	---	---	10.0000 22/06/2015	---	---	---	---	---
4,000,000	1,000.00	3.88	Actual/Actual	12/03/2029	10	---	12/03	3.88	1	GGB-FXD-120329-10Y-3.875-1.000	---	---	---	---	---	---	100.0000	B	15/10/2019
503,753	1,000.00	0.32	FLR Actual/360	16/09/2021	2	---	16/03 - 16/09	---	1	GGB-FLT-160921-02Y-0.319-1.000	---	---	---	---	---	---	---	---	---
3,000,000	1,000.00	3.38	Actual/Actual	15/02/2025	7	---	15/02	3.38	1	GGB-FXD-150225-07Y-3.375-1.000	---	---	---	---	---	---	---	---	---
250,250	1,000.00	2.90	Actual/Actual	20/03/2023	4	---	20/03	2.90	1	GGB-FXD-200323-04Y-2.900-1.000	---	---	---	---	---	---	---	---	---
964,000	1,000.00	3.25	Actual/Actual	20/03/2025	6	---	20/03	3.25	1	GGB-FXD-200325-06Y-3.250-1.000	---	---	---	---	---	---	---	---	---
2,100,000	1,000.00	3.55	Actual/Actual	20/03/2026	7	---	20/03	3.55	1	GGB-FXD-200326-07Y-3.550-1.000	---	---	---	---	---	---	---	---	---
3,314,250	1,000.00	3.25	Actual/Actual	20/03/2050	30	---	20/03	3.25	1	GGB-FXD-200350-30Y-3.250-1.000	---	---	---	---	---	---	---	---	---

Government Bonds Notes

Transactions Volume = (Pieces) * (Nominal Price). Transactions Value = (Pieces) * (Nominal Price) * (price %) + (Accrued interest).

The Value of current coupon for the issues with NV 0.01 euro refers to NV 100 euros

FLR: Floating Interest Rate.

[1] - The Expiration Date of the interest bearing period and the Date for coupon payment.

Government Bonds

Number Listed Bonds	Nominal price	Today's Rate	Accrued Interest Calc	Exp. Date [1]	Duration (years)	Note	Coupons Date	Curr. coupon value	Trading Unit	Government Bonds	Price min	Price max	Closing price	Previous closing price/date	Volume	Transactions Value	Price	Last order Buy / Sell	Date
2,000,000	1,000.00	2.00	Actual/Actual	22/04/2027	7	---	22/04	2.00	1	GGB-FXD-220427-07Y-2.000-1.000	---	---	---	---	---	---	99.9000	B	22/04/2020
2,500,000	1,000.00	1.88	Actual/Actual	23/07/2026	7	---	23/07	1.88	1	GGB-FXD-230726-07Y-1.875-1.000	---	---	---	---	---	---	---	---	---

Government Bonds Notes

Transactions Volume = (Pieces) * (Nominal Price). Transactions Value = (Pieces) * (Nominal Price) * (price %) + (Accrued interest).

The Value of current coupon for the issues with NV 0.01 euro refers to NV 100 euros

FLR: Floating Interest Rate.

[1] - The Expiration Date of the interest bearing period and the Date for coupon payment.

Treasury Bills & Zero Coupon Government Bonds

Issue Date	13-Week Maturity									26-Week Maturity									52-Week Maturity								
	Exp. Date	Initial Rate	Num Listed Bonds	Nominal price	Issue price	Last Trade Price	Last Trade Date	Volume Traded	Note	Exp. Date	Initial Rate	Num Listed Bonds	Nominal price	Issue price	Last Trade Price	Last Trade Date	Volume Traded	Note	Exp. Date	Initial Rate	Num Listed Bonds	Nominal price	Issue price	Last Trade Price	Last Trade Date	Volume Traded	Note
14/06/2019	---	---	---	---	---	---	---	---	---	---	---	---	---	---	---	---	---	---	12/06/2020	0.47	1,000,000	1,000.00	995.30	---	---	---	---
13/09/2019	---	---	---	---	---	---	---	---	---	---	---	---	---	---	---	---	---	---	11/09/2020	0.29	1,000,000	1,000.00	997.05	---	---	---	---
13/12/2019	---	---	---	---	---	---	---	---	---	---	---	---	---	---	---	---	---	---	11/12/2020	0.07	1,000,000	1,000.00	999.30	---	---	---	---
13/03/2020	---	---	---	---	---	---	---	---	---	---	---	---	---	---	---	---	---	---	12/03/2021	0.24	600,000	1,000.00	1,000.00	---	---	---	---

Bonds in Circulation	Currency / Min nominal traded Value	Coupons Payment Date	Current Coupon Value	Note	Coupon	Trading Unit	Issue Date	Duration (years)	Today's Interest	A.I.C in days	Bonds	Last price of previous days		Last Outcry in Cash (euro)		Trades in Pieces	Life min	Life Max	
												Price	Buy / Sell	Price	Buy / Sell				
Corporate Bonds in Foreign Currency and Euro																			
103,746	GBP / 10	01/12	0.25	---	61	1	01/12/1930	98	2.5	360	National Mortgage Bank	2.27	05/02/1996	2.27	S	05/02/1996	---	2.27	2.27
0	GBP / 10	01/12	0.25	---	63	1	01/12/1928	100	2.5	360	National Mortgage Bank	---	---	---	---	---	---	---	---

Government Bonds Notes

A.I.C: Accrued Interest Calculation base.

FLR: Floating Interest Rate.

The minimum tradeable Nominal Value for all Demeterialised Government Titles is 100 Euros.

(μφρ-0)

Athex & ATHEXClear Members List

Member Name				Stock Market			Derivatives Market		ATHEXClear Member	
	Address	Phone	Fax	Market Member	Remote Member	Market Maker	Proprietary	Market Maker	General Clearing	Direct Clearing
A. SARRIS SECURITIES S.A.				a						
6, ΔΡΑΓΑΤΖΑΝΙΟΥ 6 ΑΘΗΝΑ	2103367700									
AEONIC SECURITIES C.I.F. P.L.C.					a					
, ΛΑΪΟΥ 6, ΓΡ. 301B, ANNA COURT	35725337600									
ALPHA BANK A.E.									a	
103, AVE. ATHINON ΑΘΗΝΑ	+30 2103436820	210-3436270								
40, ΣΤΑΔΙΟΥ STR ΑΘΗΝΑ	(210)-3260000	(210)-3264116								
	(210)-3265546	(210)-3265811								
ALPHA FINANCE INVESTMENT SERVICES S.A.				a		a	a	a		a
5, ΜΕΡΛΙΝ 5 ΑΘΗΝΑ	2103677400									
ARGUS STOCKBROKERS LTD				a	a		a			
25, 25 ΛΕΩΦΟΡΟΣ ΔΗΜΟΣΘΕΝΗ ΣΕΒΕΡΗ	0035722717000									
ATLANTIC SECURITIES LIMITED				a						
37, ΠΡΟΔΡΟΜΟΥ 37	0035722445400									
ATLANTIC SECURITIES LTD					a					
, ΠΡΟΔΡΟΜΟΥ 37	0035722445400									
AXON SECURITIES S.A.				a			a			
48, ΣΤΑΔΙΟΥ 48 ΑΘΗΝΑ	2103363800									
BETA SECURITIES S.A.				a		a	a			a
29, Λ. ΑΛΕΞΑΝΔΡΑΣ 29 ΑΘΗΝΑ	2106478930									
BNP PARIBAS SECURITIES SERVICES									a	
2, ΛΑΜΨΑΚΟΥ 2 ΑΘΗΝΑ	2107468500									
BOFA SECURITIES EUROPE SA				a	a					
, 112 AVENUE KL?BER 75116	+33 153655555									
CAPITAL SECURITIES S.A.				a			a			
58, ΜΗΤΡΟΠΟΛΕΩΣ 58 ΑΘΗΝΑ	2103369700									
CFS SECURITIES INVESTMENT SERVICES S.A.				a						
3, ΠΑΠΑΡΡΗΓΟΠΟΥΛΟΥ 3 ΑΘΗΝΑ	2103360800									
CITIGROUP GLOBAL MARKETS EUROPE AG				a	a					
16, REUTERWEG 16 FRANKFURT	+49 691366-0									
CITIGROUP GLOBAL MARKETS LIMITED				a	a					
1, 33 CANADA SQUARE -CANARY WHARF	+44 02079864000									
CREDIT SUISSE SECURITIES (EUROPE) LIMITED				a	a					
1, ONE CABOT SQUARE LONDON	+44 2078888888									
CREDIT SUISSE SECURITIES SOCIEDAD DE VALORES SA				a	a					
, CALLE AYALA 42, 3A PLANTA-B MADRID	+34917916000									
CYCLOS SECURITIES S.A.				a			a			a
39, ΠΑΝΕΠΙΣΤΗΜΙΟΥ 39 ΑΘΗΝΑ	2103364300									
DEUTSCHE BANK S.A.					a					
1, GREAT WINCHESTER STREET LONDON	+44 20 754 54209	00441133361437								
DYNAMIC SECURITIES S.A.				a			a			a
, ΤΡΑΥΛΕΩΝ 2 & Λ. ΣΥΓΓΡΟΥ 223 ΝΕΑ ΣΜΥΡΝΗ	2103677700									
EUROBANK EQUITIES INVESTMENT FIRM S.A				a		a	a	a		a
, ΦΙΛΕΛΗΝΩΝ 10 & ΞΕΝΟΦΩΝΤΟΣ 13 ΑΘΗΝΑ	2103720000									
EUROBANK S.A.									a	
, ΟΘΩΝΟΣ 8 ΑΘΗΝΑ	2103337000									
EUROCORP INVESTMENT SERVICES S.A.				a			a			a
14, ΠΛ. ΦΙΛΙΚΗΣ ΕΤΑΙΡΕΙΑΣ 14 ΑΘΗΝΑ	2107263600									
EUROTRUST INVESTMENT FIRM SA				a						
113, ΣΕΒΑΣΤΟΥΠΟΛΕΩΣ 113 ΑΘΗΝΑ	2103363100									
EUROXX SECURITIES S.A.				a		a	a	a		a
7, ΠΑΛΕΟΛΟΓΟΥ CHALANDRI	+30 2106879400	210-6879401								
7, ΠΑΛΑΙΟΛΟΓΟΥ CHALANDRI	(210)-6879400	(210)-6879401								
G. A. PERVANAS SECURITIES- INVESTMENT SERVICES S.A.				a						
7-9, ΣΟΦΟΚΛΕΟΥΣ 7-9 ΑΘΗΝΑ	2103727200									
GLOBAL CAPITAL SECURITIES & FINANCIAL SERVICES LTD				a	a					
50, Λ. ΑΡΧΙΕΠΙΣΚΟΠΟΥ ΜΑΚΑΡΙΟΥ Γ' 50	0035722710710									
HELLENIC AMERICAN SECURITIES S.A.				a		a	a			a
27, ΑΝΔΡΕΑ ΠΑΠΑΝΔΡΕΟΥ 27 ΜΑΡΟΥΣΙ	2103311100									
HELLENIC BANK (INVESTMENTS) LTD					a					
, AVE. KYRIAKOU MATSI 31 - PO BOX 24747 NICOSIA	+357 22500100	357 22500110								

Athex & ATHEXClear Members List

Member Name	Stock Market			Derivatives Market		ATHEXClear Member				
	Address	Phone	Fax	Market Member	Remote Member	Market Maker	Proprietary	Market Maker	General Clearing	Direct Clearing
HSBC FRANCE									a	
109-111, Α ΜΕΣΟΓΕΙΩΝ 109-111	2106960000									
INDEX SECURITIES S.A.				a						
6, ΔΡΑΓΑΤΣΑΝΙΟΥ 6 ΑΘΗΝΑ	2103213920									
J. CHR. MAVRIKIS SECURITIES S.A.				a						
5, ΣΟΦΟΚΛΕΟΥΣ 5 ΑΘΗΝΑ	2103216730									
KAPPA SECURITIES S.A.				a			a			
15, ΒΑΛΑΩΡΙΤΟΥ 15 ΑΘΗΝΑ	2103678600									
KARAMANOF SECURITIES & INVESTMENT SERVICES S.A.				a			a			
2, ΠΛ.ΑΓ.ΘΕΟΔΩΡΩΝ 2 ΑΘΗΝΑ	2103212947									
LAIKI FINANCIAL SERVICES LTD					a					
26, AVE. VYRONOS NICOSIA	357 22367367	357 22718567								
LEON DEPOLAS SECURITIES S.A.				a		a	a			
1, ΧΡΗΣΤΟΥ ΛΑΔΑ 1 ΑΘΗΝΑ	2103213276 -28									
MEGA EQUITY SECURITIES & FINANCIAL SERVICES PUBLIC LTD				a	a		a			
42-44, ΛΕΩΦ.ΓΡΙΒΑ ΔΙΓΓΕΝΗ 42-44	0035722711711									
MERIT SECURITIES S.A.				a		a	a			a
5, ΣΟΦΟΚΛΕΟΥΣ 5 ΑΘΗΝΑ	2103671880									
MERRILL LYNCH INTERNATIONAL				a	a					
2, 2 KING EDWARD STREET LONDON	+44 20276281000									
N. CHRYSOCHOIDIS SECURITIES S.A.				a			a			a
7-9, ΣΟΦΟΚΛΕΟΥΣ 7-9 ΑΘΗΝΑ	2103213913									
NATIONAL BANK OF GREECE S.A.				a		a	a		a	
68, ΑΚΑΔΙΜΙΑΣ STR. ΑΘΗΝΑ	(210)-3328817	(210)-3328678								
86, ΑΙΟΛΟΥ STR. ΑΘΗΝΑ	(210)-3341000	(210)-3228187								
NATIONAL SECURITIES S.A.				a		a	a	a		
66, ΛΕΩΦ. ΚΗΦΙΣΙΑΣ 66 (ΚΤΗΡΙΟ Α) ΜΑΡΟΥΣΙ	2107720000									
NUNTIUS BROKERAGE AND INVESTMENT SERVICES S.A				a						
6, ΔΡΑΓΑΤΣΑΝΙΟΥ 6 ΑΘΗΝΑ	2103350599									
ONE PLUS CAPITAL LIMITED				a	a					
, 75 PRODROMOU AVENUE NICOSIA 1307	35722873760									
OPTIMA BANK S.A.				a		a	a	a	a	
32, ΑΙΓΙΑΛΕΙΑΣ 32 & ΠΑΡΑΔΕΙΣΟΥ ΜΑΡΟΥΣΙ	2108173111									
PANTELAKIS SECURITIES S.A.				a		a	a	a		
57, ΕΘΝΙΚΗΣ ΑΝΤΙΣΤΑΣΕΩΣ 57, ΚΤΙΡΙΟ Β CHALANDRI	2106965000									
PEGASUS SECURITIES S.A				a			a			
17, ΒΑΛΑΩΡΙΤΟΥ 17 & ΑΜΕΡΙΚΗΣ ΑΘΗΝΑ	2103670700									
PIRAEUS BANK S.A.				a			a		a	
4, ΑΜΕΡΙΚΗΣ ΑΘΗΝΑ	+30 2103335000	210-3335079								
4, ΑΜΕΡΙΚΗΣ STR ΑΘΗΝΑ	(210)-3335918	(210)-3254207								
4, ΑΜΕΡΙΚΗΣ STR. ΑΘΗΝΑ	(210)-3335000	(210)-3335079								
PIRAEUS SECURITIES S. A.				a		a	a	a		a
10, ΣΤΑΔΙΟΥ 10 ΑΘΗΝΑ	2103354100									
PROCHOICE SECURITIES LTD				a	a					
57, ΛΕΩΦ.ΣΠΥΡΟΥ ΚΥΠΡΙΑΝΟΥ 57, ΑΚΙΝΗΤΑ Φ	035724661192									
SHARELINK SECURITIES & FINANCIAL SERVICES LTD				a	a		a			
6, HOUSE-ΘΕΟΤΟΚΗ 6 ΜΕΓΑΡΟ ΕΛΛΗΝΑ	+357 22554200									
SOCIETE GENERALE S.A.				a	a		a			
, 17 COURS VALMY, CEDEX	+157290504									
SOLIDUS SECURITIES S.A				a			a			a
64, ΛΟΥΙΖΗΣ ΡΙΑΝΚΟΥΡ 64 ΑΘΗΝΑ	2106900600									
ST. EM. LAVRENTAKIS SECURITIES S.A.				a			a			
7-9, ΣΟΦΟΚΛΕΟΥΣ 7-9 ΑΘΗΝΑ	2103213336									
THE CYPRUS INVESTMENT & SECURITIES CORPORATION LTD				a	a					
154, ΛΕΩΦ. ΛΕΜΕΣΟΥ 154	0035722121700									
UBS EUROPE SE				a	a					
, OPERNTURM, BOCKENHEIMER LANDSTRASSE 2-4	496921790									
UBS LIMITED					a					
1, FINSBURY AVENUE LONDON	+44 2075687135									

List of Stocks under Market Making operations

Securities	Market Maker	Start Market Making	Stock Category
MLS MULTIMEDIA SA (CR)			Suspension Status
	PIRAEUS SECURITIES S. A.	01/08/2019	
ALPHA ETF FTSE Athex Large Cap			Exchange Traded Funds (ETFs)
	ALPHA FINANCE INVESTMENT SERVICES S.A.	02/01/1900	
	NATIONAL SECURITIES S.A.	02/01/1900	
ADMIE (IPTO) HOLDING S.A. (CR)			Main Market
	HELLENIC AMERICAN SECURITIES S.A.	09/03/2020	
	PIRAEUS SECURITIES S. A.	29/06/2017	
ALPHA BANK (CR)			Main Market
	ALPHA FINANCE INVESTMENT SERVICES S.A.	29/02/2016	
	EUROBANK EQUITIES INVESTMENT FIRM S.A	22/10/2006	
	HELLENIC AMERICAN SECURITIES S.A.	25/07/2014	
	LEON DEPOLAS SECURITIES S.A.	04/01/2016	
	MERIT SECURITIES S.A	03/09/2012	
	NATIONAL SECURITIES S.A.	02/01/1900	
	PIRAEUS SECURITIES S. A.	28/05/2009	
AS COMPANY SA (CR)			Main Market
	EUROBANK EQUITIES INVESTMENT FIRM S.A	01/04/2019	
ATTICA BANK S.A. (CR)			Main Market
	EUROBANK EQUITIES INVESTMENT FIRM S.A	11/11/2019	
	EUROXX SECURITIES S.A.	22/01/2016	
	PIRAEUS SECURITIES S. A.	20/09/2017	
ATTICA HOLDINGS (CR)			Main Market
	HELLENIC AMERICAN SECURITIES S.A.	28/12/2017	
AUTOHELLAS SA (CR)			Main Market
	ALPHA FINANCE INVESTMENT SERVICES S.A.	01/07/2019	
	EUROXX SECURITIES S.A.	02/07/2018	
AVAX S.A. (CR)			Main Market
	EUROBANK EQUITIES INVESTMENT FIRM S.A	14/12/2015	
BRIQ PROPERTIES (CR)			Main Market
	EUROBANK EQUITIES INVESTMENT FIRM S.A	09/09/2019	
BYTE COMPUTER SA (CR)			Main Market
	MERIT SECURITIES S.A	04/08/2008	
CC HBC AG (CR)			Main Market
	NATIONAL SECURITIES S.A.	02/01/1900	
	PIRAEUS SECURITIES S. A.	04/05/2015	
CENERGY HOLDINGS (CB)			Main Market
	ALPHA FINANCE INVESTMENT SERVICES S.A.	02/01/2016	
	EUROBANK EQUITIES INVESTMENT FIRM S.A	02/01/2016	
CNL CAPITAL (CR)			Main Market
	MERIT SECURITIES S.A	01/10/2018	
EKTER SA (CR)			Main Market
	EUROBANK EQUITIES INVESTMENT FIRM S.A	16/10/2017	
	LEON DEPOLAS SECURITIES S.A.	21/05/2018	
ELASTRON (CR)			Main Market
	LEON DEPOLAS SECURITIES S.A.	20/02/2017	
ELLAKTOR (CR)			Main Market
	ALPHA FINANCE INVESTMENT SERVICES S.A.	18/03/2019	
	EUROXX SECURITIES S.A.	24/09/2018	
	NATIONAL SECURITIES S.A.	02/01/1900	
	PIRAEUS SECURITIES S. A.	22/10/2018	
ELTON SA (CR)			Main Market
	BETA SECURITIES S.A.	03/09/2012	
	LEON DEPOLAS SECURITIES S.A.	01/04/2019	
ELVALHALCOR (CR)			Main Market
	ALPHA FINANCE INVESTMENT SERVICES S.A.	07/05/2018	
	EUROBANK EQUITIES INVESTMENT FIRM S.A	07/05/2018	
EUROBANK HOLDINGS (CR)			Main Market
	ALPHA FINANCE INVESTMENT SERVICES S.A.	09/01/2006	
	EUROBANK EQUITIES INVESTMENT FIRM S.A	01/06/2012	
	HELLENIC AMERICAN SECURITIES S.A.	25/07/2014	
	LEON DEPOLAS SECURITIES S.A.	30/11/2018	
	MERIT SECURITIES S.A	06/11/2017	
	NATIONAL SECURITIES S.A.	02/01/1900	
	PIRAEUS SECURITIES S. A.	28/09/2009	

List of Stocks under Market Making operations

Securities	Market Maker	Start Market Making	Stock Category
EUROPEAN RELIANCE INSUR. (CR)			Main Market
	EUROBANK EQUITIES INVESTMENT FIRM S.A	08/07/2019	
	PANTELAKIS SECURITIES S.A.	15/07/2019	
EYDAP S.A. (CR)			Main Market
	ALPHA FINANCE INVESTMENT SERVICES S.A.	27/01/2020	
	EUROBANK EQUITIES INVESTMENT FIRM S.A	10/06/2019	
FOURLIS (CR)			Main Market
	EUROBANK EQUITIES INVESTMENT FIRM S.A	01/12/2016	
	PIRAEUS SECURITIES S. A.	06/03/2017	
GEK TERNA (CR)			Main Market
	PIRAEUS SECURITIES S. A.	29/08/2019	
GR. SARANTIS S.A. (CR)			Main Market
	BETA SECURITIES S.A.	14/05/2012	
	EUROBANK EQUITIES INVESTMENT FIRM S.A	24/10/2016	
HELLENIC EXCHANGES-A.S.E. (CR)			Main Market
	HELLENIC AMERICAN SECURITIES S.A.	01/09/2014	
	NATIONAL SECURITIES S.A.	02/01/1900	
	PIRAEUS SECURITIES S. A.	04/05/2015	
HELLENIC PETROLEUM (CR)			Main Market
	HELLENIC AMERICAN SECURITIES S.A.	14/09/2015	
	PIRAEUS SECURITIES S. A.	20/03/2017	
IKTINOS HELLAS SA (CR)			Main Market
	ALPHA FINANCE INVESTMENT SERVICES S.A.	01/04/2019	
	EUROBANK EQUITIES INVESTMENT FIRM S.A	25/02/2019	
	NATIONAL SECURITIES S.A.	02/01/1900	
INTERCONTINENTAL (CR)			Main Market
	LEON DEPOLAS SECURITIES S.A.	03/06/2019	
INTRACOM HOLDINGS (CR)			Main Market
	LEON DEPOLAS SECURITIES S.A.	08/10/2018	
INTRALOT (CR)			Main Market
	EUROXX SECURITIES S.A.	12/06/2017	
	PIRAEUS SECURITIES S. A.	28/09/2009	
JUMBO SA (CR)			Main Market
	MERIT SECURITIES S.A	06/11/2017	
	PIRAEUS SECURITIES S. A.	06/03/2017	
KARAMOLEGOS SA (CR)			Main Market
	EUROXX SECURITIES S.A.	04/10/2019	
KLOUKINAS - LAPPAS SA (CR)			Main Market
	BETA SECURITIES S.A.	22/09/2014	
KRI-KRI S.A. (CR)			Main Market
	EUROBANK EQUITIES INVESTMENT FIRM S.A	07/05/2018	
	LEON DEPOLAS SECURITIES S.A.	16/01/2017	
LAMDA DEVELOPMENT SA (CR)			Main Market
	EUROBANK EQUITIES INVESTMENT FIRM S.A	08/12/2014	
	PANTELAKIS SECURITIES S.A.	06/11/2017	
	PIRAEUS SECURITIES S. A.	29/06/2017	
LAMPASA HOTEL SA (CR)			Main Market
	LEON DEPOLAS SECURITIES S.A.	16/01/2017	
MARFIN INVESTMENT GROUP (CR)			Main Market
	PIRAEUS SECURITIES S. A.	02/02/2009	
MOTOR OIL (CR)			Main Market
	HELLENIC AMERICAN SECURITIES S.A.	01/09/2014	
	LEON DEPOLAS SECURITIES S.A.	01/04/2019	
	MERIT SECURITIES S.A	25/02/2019	
	NATIONAL SECURITIES S.A.	02/01/1900	
	PIRAEUS SECURITIES S. A.	04/05/2015	
MYTILINEOS (CR)			Main Market
	ALPHA FINANCE INVESTMENT SERVICES S.A.	15/04/2019	
	EUROBANK EQUITIES INVESTMENT FIRM S.A	20/09/2017	
	MERIT SECURITIES S.A	25/02/2019	
	NATIONAL SECURITIES S.A.	02/01/1900	
	PIRAEUS SECURITIES S. A.	04/05/2015	

List of Stocks under Market Making operations

Securities	Market Maker	Start Market Making	Stock Category
NATIONAL BANK (CR)			
	ALPHA FINANCE INVESTMENT SERVICES S.A.	09/01/2006	Main Market
	EUROBANK EQUITIES INVESTMENT FIRM S.A	22/10/2006	
	HELLENIC AMERICAN SECURITIES S.A.	25/07/2014	
	LEON DEPOLAS SECURITIES S.A.	20/05/2015	
	MERIT SECURITIES S.A	03/09/2012	
	NATIONAL SECURITIES S.A.	02/01/1900	
	PIRAEUS SECURITIES S. A.	08/09/2008	
OPAP (CR)			
	ALPHA FINANCE INVESTMENT SERVICES S.A.	09/01/2006	Main Market
	EUROBANK EQUITIES INVESTMENT FIRM S.A	22/10/2006	
	HELLENIC AMERICAN SECURITIES S.A.	25/07/2014	
	MERIT SECURITIES S.A	20/03/2017	
	NATIONAL SECURITIES S.A.	02/01/1900	
	PIRAEUS SECURITIES S. A.	04/05/2015	
OTE (CR)			
	ALPHA FINANCE INVESTMENT SERVICES S.A.	09/01/2006	Main Market
	EUROBANK EQUITIES INVESTMENT FIRM S.A	22/10/2006	
	HELLENIC AMERICAN SECURITIES S.A.	25/07/2014	
	LEON DEPOLAS SECURITIES S.A.	20/04/2015	
	MERIT SECURITIES S.A	20/03/2017	
	NATIONAL SECURITIES S.A.	02/01/1900	
	PIRAEUS SECURITIES S. A.	08/09/2008	
P.P.A. S.A. (CR)			
	EUROBANK EQUITIES INVESTMENT FIRM S.A	06/02/2019	Main Market
PAPOUTSANIS (CR)			
	ALPHA FINANCE INVESTMENT SERVICES S.A.	19/11/2018	Main Market
	BETA SECURITIES S.A.	25/11/2013	
PETROPOULOS PETROS (CR)			
	EUROBANK EQUITIES INVESTMENT FIRM S.A	01/04/2019	Main Market
	PANTELAKIS SECURITIES S.A.	16/03/2020	
PIRAEUS BANK (CR)			
	ALPHA FINANCE INVESTMENT SERVICES S.A.	15/04/2019	Main Market
	EUROBANK EQUITIES INVESTMENT FIRM S.A	22/10/2006	
	EUROXX SECURITIES S.A.	15/02/2016	
	HELLENIC AMERICAN SECURITIES S.A.	25/07/2014	
	LEON DEPOLAS SECURITIES S.A.	30/11/2018	
	MERIT SECURITIES S.A	16/09/2013	
	NATIONAL SECURITIES S.A.	02/01/1900	
	PIRAEUS SECURITIES S. A.	16/02/2009	
PLAISIO COMPUTERS SA (CR)			
	EUROBANK EQUITIES INVESTMENT FIRM S.A	02/03/2015	Main Market
PPC (CR)			
	ALPHA FINANCE INVESTMENT SERVICES S.A.	09/01/2006	Main Market
	EUROBANK EQUITIES INVESTMENT FIRM S.A	22/10/2006	
	HELLENIC AMERICAN SECURITIES S.A.	01/09/2014	
	MERIT SECURITIES S.A	06/11/2017	
	NATIONAL SECURITIES S.A.	02/01/1900	
	PIRAEUS SECURITIES S. A.	28/09/2009	
PROFILE SA (CR)			
	PANTELAKIS SECURITIES S.A.	01/07/2019	Main Market
QUEST HOLDINGS (CR)			
	BETA SECURITIES S.A.	26/03/2018	Main Market
	EUROBANK EQUITIES INVESTMENT FIRM S.A	28/01/2019	
SPIROY AGRICULTURE SA (CR)			
	EUROBANK EQUITIES INVESTMENT FIRM S.A	02/09/2019	Main Market
TERNA ENERGY (CR)			
	PIRAEUS SECURITIES S. A.	09/12/2019	Main Market
THRACE PLASTICS SA (CR)			
	ALPHA FINANCE INVESTMENT SERVICES S.A.	26/03/2018	Main Market
	EUROBANK EQUITIES INVESTMENT FIRM S.A	26/03/2018	
TITAN CEMENT (CB)			
	EUROBANK EQUITIES INVESTMENT FIRM S.A	06/11/2019	Main Market
VIOHALCO SA/NV (CB)			
	ALPHA FINANCE INVESTMENT SERVICES S.A.	11/03/2008	Main Market
	EUROBANK EQUITIES INVESTMENT FIRM S.A	04/03/2014	
	MERIT SECURITIES S.A	17/03/2014	

Underlying Asset				Derivatives Market														
Price max	Price min	Closing price	change	Delivery Month	Open price	Price max	Price min	Last price	Closing price	Last Bid	Last Ask	Fixing price*	Life high	Life low	Trades	Volume	Open Interest	
FTSE/Athex Large Cap																		
1,480.81	1,431.36	1,436.74	-1.86%	June 2020	1,480.00	1,480.00	1,432.50	1,435.00	1,435.00	---	---		1,559.25	---	264	1,491	3,023	
				July 2020	1,423.25	1,430.75	1,412.50	1,412.50	1,412.50	---	---		---	1,447.75	---	11	124	128
				August 2020	---	---	---	---	1,471.75	---	---		---	---	---	---	---	
				September 2020	---	---	---	---	1,474.00	---	---		---	---	---	---	---	
				December 2020	---	---	---	---	1,481.50	---	---		---	---	---	---	---	
				March 2021	---	---	---	---	1,488.75	---	---		---	---	---	---	---	

(Trade Unit: 1 Index Point x 2E, Cash Settlement)

Derivatives notes

Fixing prices and final open positions can be retrieved from the following path <http://www.helex.gr/el/web/guest/statistics-end-of-day-derivatives>

Underlying Asset				Derivatives Market													
Price max	Price min	Closing price	change	Delivery Month	Open price	Price max	Price min	Last price	Closing price	Last Bid	Last Ask	Fixing price*	Life high	Life low	Trades	Volume	Open Interest
ADMIE (IPTO) HOLDING S.A. (CR)																	
(Contract Size: 100 Securities, Physical Delivery)																	
2.225	2.155	2.16	-1.82%	June 2020	2.18	2.20	2.16	2.16	2.16	---	---	---	2.75	---	32	157	2,861
				September 2020	---	---	---	---	2.22	---	---	---	---	---	---	---	---
				December 2020	---	---	---	---	2.23	---	---	---	---	---	---	---	---
				March 2021	---	---	---	---	2.24	---	---	---	---	---	---	---	---
ALPHA BANK (CR)																	
(Contract Size: 100 Securities, Physical Delivery)																	
0.5788	0.504	0.51	-7.61%	June 2020	0.570	0.574	0.505	0.511	0.511	---	---	---	1.58	---	451	7,950	25,738
				September 2020	0.540	0.540	0.525	0.525	0.525	---	---	---	0.560	---	3	8	36
				December 2020	---	---	---	---	0.559	---	---	---	---	---	---	---	---
				March 2021	---	---	---	---	0.561	---	---	---	---	---	---	---	---
ATTICA BANK S.A. (CR)																	
(Contract Size: 100 Securities, Physical Delivery)																	
0.208	0.1914	0.1914	-3.92%	June 2020	---	---	---	---	0.200	---	---	---	0.271	---	---	---	341
				September 2020	---	---	---	---	0.201	---	---	---	---	---	---	---	---
				December 2020	---	---	---	---	0.202	---	---	---	---	---	---	---	---
				March 2021	---	---	---	---	0.203	---	---	---	---	---	---	---	---
CC HBC AG (CR)																	
(Contract Size: 100 Securities, Physical Delivery)																	
21.42	20.55	20.62	-3.46%	June 2020	21.32	21.40	20.64	20.69	20.69	---	---	---	28.10	---	21	28	529
				September 2020	---	---	---	---	21.51	---	---	---	35.15	---	---	---	2
				December 2020	---	---	---	---	21.61	---	---	---	---	---	---	---	---
				March 2021	---	---	---	---	21.72	---	---	---	---	---	---	---	---
CENERGY HOLDINGS (CB)																	
(Contract Size: 100 Securities, Physical Delivery)																	
0.972	0.93	0.935	-1.99%	June 2020	0.940	0.940	0.925	0.930	0.930	---	---	---	1.05	---	5	21	2,177
				September 2020	---	---	---	---	0.961	---	---	---	---	---	---	---	---
				December 2020	---	---	---	---	0.965	---	---	---	---	---	---	---	---
				March 2021	---	---	---	---	0.970	---	---	---	---	---	---	---	---
ELLAKTOR (CR)																	
(Contract Size: 100 Securities, Physical Delivery)																	
0.862	0.815	0.82	-2.84%	June 2020	0.855	0.858	0.818	0.819	0.819	---	---	---	1.52	---	70	513	7,940
				September 2020	---	---	---	---	0.850	---	---	---	---	---	---	---	---
				December 2020	---	---	---	---	0.854	---	---	---	---	---	---	---	---
				March 2021	---	---	---	---	0.858	---	---	---	---	---	---	---	---
EUROBANK HOLDINGS (CR)																	
(Contract Size: 100 Securities, Physical Delivery)																	
0.335	0.3012	0.306	-4.37%	June 2020	0.325	0.336	0.301	0.308	0.308	---	---	---	0.820	---	533	17,618	49,437
				September 2020	0.321	0.321	0.321	0.321	0.321	---	---	---	0.402	---	1	5	24
				December 2020	---	---	---	---	0.324	---	---	---	---	---	---	---	---
				March 2021	---	---	---	---	0.325	---	---	---	---	---	---	---	---

Derivatives notes

Fixing prices and final open positions can be retrieved from the following path <http://www.helex.gr/el/web/guest/statistics-end-of-day-derivatives>

Underlying Asset				Derivatives Market													
Price max	Price min	Closing price	change	Delivery Month	Open price	Price max	Price min	Last price	Closing price	Last Bid	Last Ask	Fixing price*	Life high	Life low	Trades	Volume	Open Interest
EYDAP S.A. (CR)				(Contract Size: 100 Securities, Physical Delivery)													
6.93	6.69	6.88	0.44%	June 2020	6.90	6.90	6.81	6.82	6.82	---	---	---	6.99	---	6	17	153
				September 2020	---	---	---	---	6.90	---	---	---	---	---	---	---	---
				December 2020	---	---	---	---	6.93	---	---	---	---	---	---	---	---
				March 2021	---	---	---	---	6.97	---	---	---	---	---	---	---	---
FOURLIS (CR)				(Contract Size: 100 Securities, Physical Delivery)													
3.555	3.465	3.47	-1.28%	June 2020	3.49	3.49	3.40	3.45	3.45	---	---	---	4.36	---	7	15	342
				September 2020	---	---	---	---	3.54	---	---	---	---	---	---	---	---
				December 2020	---	---	---	---	3.56	---	---	---	---	---	---	---	---
				March 2021	---	---	---	---	3.57	---	---	---	---	---	---	---	---
GEK TERNA (CR)				(Contract Size: 100 Securities, Physical Delivery)													
6.27	5.91	6	-2.28%	June 2020	6.23	6.25	5.90	5.98	5.98	---	---	---	7.26	---	59	176	2,474
				September 2020	---	---	---	---	6.18	---	---	---	---	---	---	---	---
				December 2020	---	---	---	---	6.21	---	---	---	---	---	---	---	---
				March 2021	---	---	---	---	6.24	---	---	---	---	---	---	---	---
HELLENIC EXCHANGES-A.S.E. (CR)				(Contract Size: 100 Securities, Physical Delivery)													
3.43	3.3	3.3	-2.37%	June 2020	3.38	3.38	3.26	3.26	3.26	---	---	---	3.93	---	7	33	1,451
				September 2020	---	---	---	---	3.40	---	---	---	---	---	---	---	---
				December 2020	---	---	---	---	3.42	---	---	---	---	---	---	---	---
				March 2021	---	---	---	---	3.44	---	---	---	---	---	---	---	---
HELLENIC PETROLEUM (CR)				(Contract Size: 100 Securities, Physical Delivery)													
5.98	5.83	5.85	-1.02%	June 2020	5.97	5.97	5.82	5.87	5.87	---	---	---	6.80	---	6	28	1,281
				September 2020	---	---	---	---	5.95	---	---	---	---	---	---	---	---
				December 2020	---	---	---	---	5.98	---	---	---	---	---	---	---	---
				March 2021	---	---	---	---	6.01	---	---	---	---	---	---	---	---
INTRACOM HOLDINGS (CR)				(Contract Size: 100 Securities, Physical Delivery)													
0.47	0.452	0.46	0.00%	June 2020	---	---	---	---	0.461	---	---	---	0.560	---	---	---	1,670
				September 2020	---	---	---	---	0.463	---	---	---	---	---	---	---	---
				December 2020	---	---	---	---	0.465	---	---	---	---	---	---	---	---
				March 2021	---	---	---	---	0.468	---	---	---	---	---	---	---	---
INTRALOT (CR)				(Contract Size: 100 Securities, Physical Delivery)													
0.1278	0.121	0.122	0.83%	June 2020	0.123	0.126	0.121	0.125	0.125	---	---	---	0.180	---	17	300	1,215
				September 2020	---	---	---	---	0.122	---	---	---	---	---	---	---	---
				December 2020	---	---	---	---	0.122	---	---	---	---	---	---	---	---
				March 2021	---	---	---	---	0.123	---	---	---	---	---	---	---	---

Derivatives notes

Fixing prices and final open positions can be retrieved from the following path <http://www.helex.gr/el/web/guest/statistics-end-of-day-derivatives>

Underlying Asset				Derivatives Market													
Price max	Price min	Closing price	change	Delivery Month	Open price	Price max	Price min	Last price	Closing price	Last Bid	Last Ask	Fixing price*	Life high	Life low	Trades	Volume	Open Interest
JUMBO SA (CR)				(Contract Size: 100 Securities, Physical Delivery)													
15.27	14.97	15.2	0.66%	June 2020	15.20	15.20	15.02	15.15	15.15	---	---	---	16.30	---	16	31	356
				September 2020	---	---	---	---	15.20	---	---	---	---	---	---	---	---
				December 2020	---	---	---	---	15.28	---	---	---	---	---	---	---	---
				March 2021	---	---	---	---	15.36	---	---	---	---	---	---	---	---
LAMDA DEVELOPMENT SA (CR)				(Contract Size: 100 Securities, Physical Delivery)													
6.25	6	6	-2.91%	June 2020	6.21	6.21	6.00	6.01	6.01	---	---	---	7.22	---	31	95	1,438
				September 2020	---	---	---	---	6.22	---	---	---	---	---	---	---	---
				December 2020	---	---	---	---	6.25	---	---	---	---	---	---	---	---
				March 2021	---	---	---	---	6.28	---	---	---	---	---	---	---	---
MARFIN INVESTMENT GROUP (CR)				(Contract Size: 100 Securities, Physical Delivery)													
0.0593	0.058	0.0582	1.04%	June 2020	0.060	0.060	0.058	0.059	0.059	---	---	---	0.133	---	20	415	42,085
				September 2020	---	---	---	---	0.058	---	---	---	---	---	---	---	---
				December 2020	---	---	---	---	0.058	---	---	---	---	---	---	---	---
				March 2021	---	---	---	---	0.059	---	---	---	---	---	---	---	---
MOTOR OIL (CR)				(Contract Size: 100 Securities, Physical Delivery)													
13.53	13.16	13.53	3.20%	June 2020	13.34	13.42	13.11	13.42	13.42	---	---	---	16.33	---	8	20	189
				September 2020	---	---	---	---	13.20	---	---	---	12.70	---	---	---	1
				December 2020	---	---	---	---	13.27	---	---	---	---	---	---	---	---
				March 2021	---	---	---	---	13.33	---	---	---	12.60	---	---	---	2
MYTILINEOS (CR)				(Contract Size: 100 Securities, Physical Delivery)													
6.925	6.78	6.92	1.39%	June 2020	6.89	6.92	6.79	6.92	6.92	---	---	---	9.00	---	103	329	4,367
				September 2020	---	---	---	---	6.87	---	---	---	---	---	---	---	---
				December 2020	---	---	---	---	6.91	---	---	---	---	---	---	---	---
				March 2021	---	---	---	---	6.94	---	---	---	---	---	---	---	---
NATIONAL BANK (CR)				(Contract Size: 100 Securities, Physical Delivery)													
1.044	0.953	0.953	-5.64%	June 2020	1.04	1.05	0.949	0.958	0.958	---	---	---	2.48	---	372	5,596	18,752
				September 2020	0.999	0.999	0.999	0.999	0.999	---	---	---	0.999	---	1	2	3
				December 2020	---	---	---	---	1.02	---	---	---	---	---	---	---	---
				March 2021	---	---	---	---	1.03	---	---	---	---	---	---	---	---
OPAP (CR)				(Contract Size: 100 Securities, Physical Delivery)													
8.135	7.825	7.95	-1.61%	June 2020	8.24	8.29	7.83	7.89	7.89	---	---	---	8.99	---	34	130	1,497
				September 2020	---	---	---	---	8.14	---	---	---	6.15	---	---	---	2
				December 2020	---	---	---	---	8.18	---	---	---	---	---	---	---	---
				March 2021	---	---	---	---	8.22	---	---	---	---	---	---	---	---

Derivatives notes

Fixing prices and final open positions can be retrieved from the following path <http://www.helex.gr/el/web/guest/statistics-end-of-day-derivatives>

Underlying Asset				Derivatives Market													
Price max	Price min	Closing price	change	Delivery Month	Open price	Price max	Price min	Last price	Closing price	Last Bid	Last Ask	Fixing price*	Life high	Life low	Trades	Volume	Open Interest
OTE (CR) (Contract Size: 100 Securities, Physical Delivery)																	
12.39	12.16	12.25	-0.41%	June 2020	12.35	12.35	12.22	12.25	12.25	---	---	---	12.80	---	37	143	1,840
---	---	---	---	September 2020	---	---	---	---	12.38	---	---	---	11.01	---	---	---	1
---	---	---	---	December 2020	---	---	---	---	12.45	---	---	---	---	---	---	---	---
---	---	---	---	March 2021	---	---	---	---	12.51	---	---	---	---	---	---	---	---
P.P.A. S.A. (CR) (Contract Size: 100 Securities, Physical Delivery)																	
16.8	16.48	16.64	-0.36%	June 2020	---	---	---	---	16.73	---	---	---	19.60	---	---	---	214
---	---	---	---	September 2020	---	---	---	---	16.81	---	---	---	---	---	---	---	---
---	---	---	---	December 2020	---	---	---	---	16.90	---	---	---	---	---	---	---	---
---	---	---	---	March 2021	---	---	---	---	16.98	---	---	---	---	---	---	---	---
PIRAEUS BANK (CR) (Contract Size: 100 Securities, Physical Delivery)																	
1.1535	1.015	1.04	-4.59%	June 2020	1.13	1.14	1.02	1.03	1.03	---	---	---	2.14	---	158	2,619	9,661
---	---	---	---	September 2020	---	---	---	---	1.10	---	---	---	---	---	---	---	---
---	---	---	---	December 2020	---	---	---	---	1.10	---	---	---	---	---	---	---	---
---	---	---	---	March 2021	---	---	---	---	1.11	---	---	---	---	---	---	---	---
PPC (CR) (Contract Size: 100 Securities, Physical Delivery)																	
2.718	2.572	2.638	1.46%	June 2020	2.65	2.71	2.57	2.66	2.66	---	---	---	3.85	---	265	2,213	8,736
---	---	---	---	September 2020	---	---	---	---	2.62	---	---	---	---	---	---	---	---
---	---	---	---	December 2020	---	---	---	---	2.63	---	---	---	---	---	---	---	---
---	---	---	---	March 2021	---	---	---	---	2.64	---	---	---	---	---	---	---	---
TERNA ENERGY (CR) (Contract Size: 102 Securities, Physical Delivery)																	
8.79	8.69	8.79	1.15%	June 2020	8.75	8.76	8.74	8.76	8.76	---	---	---	8.76	---	9	31	3,039
---	---	---	---	September 2020	---	---	---	---	8.75	---	---	---	---	---	---	---	---
---	---	---	---	December 2020	---	---	---	---	8.79	---	---	---	---	---	---	---	---
---	---	---	---	March 2021	---	---	---	---	8.84	---	---	---	---	---	---	---	---
TITAN CEMENT (CB) (Contract Size: 102 Securities, Physical Delivery)																	
10.92	10.4	10.4	-4.06%	June 2020	10.87	10.99	10.40	10.43	10.43	---	---	---	11.23	10.40	57	146	318
---	---	---	---	September 2020	---	---	---	---	10.91	---	---	---	---	---	---	---	---
---	---	---	---	December 2020	---	---	---	---	10.97	---	---	---	---	---	---	---	---
---	---	---	---	March 2021	---	---	---	---	11.02	---	---	---	---	---	---	---	---
VIOHALCO SA/NV (CB) (Contract Size: 100 Securities, Physical Delivery)																	
2.34	2.23	2.29	-0.22%	June 2020	2.32	2.34	2.26	2.32	2.32	---	---	---	2.48	---	20	253	2,557
---	---	---	---	September 2020	---	---	---	---	2.31	---	---	---	---	---	---	---	---
---	---	---	---	December 2020	---	---	---	---	2.32	---	---	---	---	---	---	---	---
---	---	---	---	March 2021	---	---	---	---	2.33	---	---	---	---	---	---	---	---

Derivatives notes

Fixing prices and final open positions can be retrieved from the following path <http://www.helex.gr/el/web/guest/statistics-end-of-day-derivatives>

FTSE/Athex Large Cap

(Trade Unit: 1 Index Point x 2€ - Exercise Style: European, Cash Settlement)

Call Options																Put Options																
Exercise Price	June 2020							July 2020							Other Months		June 2020						July 2020						Other Months		Exercise Price	
	Open price	Price max	Price min	Last price	Closing price	Volume	Open Interest	Open price	Price max	Price min	Last price	Closing price	Volume	Open Interest	Volume	Open Interest	Open price	Price max	Price min	Last price	Closing price	Volume	Open Interest	Open price	Price max	Price min	Last price	Closing price	Volume	Open Interest		Volume
1,050	0.00	0.00	0.00	-	410.00	-	-	-	-	-	-	-	-	-	-	0.00	0.00	0.00	-	0.01	-	-	-	-	-	-	-	-	-	-	-	1,050
1,075	0.00	0.00	0.00	-	385.00	-	-	-	-	-	-	-	-	-	-	0.00	0.00	0.00	-	0.02	-	-	-	-	-	-	-	-	-	-	-	1,075
1,100	0.00	0.00	0.00	-	360.00	-	-	-	-	-	-	-	-	-	-	0.00	0.00	0.00	-	0.05	-	-	-	-	-	-	-	-	-	-	-	1,100
1,125	0.00	0.00	0.00	-	335.00	-	-	-	-	-	-	-	-	-	-	0.00	0.00	0.00	-	0.12	-	-	-	-	-	-	-	-	-	-	-	1,125
1,150	0.00	0.00	0.00	-	310.00	-	-	-	-	-	-	-	-	-	-	0.00	0.00	0.00	-	0.26	-	-	-	-	-	-	-	-	-	-	-	1,150
1,175	0.00	0.00	0.00	-	286.00	-	-	-	-	-	-	-	-	-	-	0.00	0.00	0.00	-	0.50	-	-	-	-	-	-	-	-	-	-	-	1,175
1,200	0.00	0.00	0.00	-	261.00	-	-	-	-	-	-	-	-	-	-	0.00	0.00	0.00	-	0.95	-	-	-	-	-	-	-	-	-	-	-	1,200
1,225	0.00	0.00	0.00	-	237.00	-	-	-	-	-	-	-	-	-	-	0.00	0.00	0.00	-	1.70	-	-	-	-	-	-	-	-	-	-	-	1,225
1,250	0.00	0.00	0.00	-	213.00	-	-	-	-	-	-	-	-	-	-	0.00	0.00	0.00	-	2.80	-	-	-	-	-	-	-	-	-	-	-	1,250
1,275	0.00	0.00	0.00	-	190.00	-	-	0.00	0.00	0.00	-	184.00	-	-	-	0.00	0.00	0.00	-	4.60	-	-	0.00	0.00	0.00	-	17.75	-	-	-	1,275	
1,300	0.00	0.00	0.00	-	168.00	-	-	0.00	0.00	0.00	-	165.00	-	-	-	0.00	0.00	0.00	-	7.20	-	-	0.00	0.00	0.00	-	23.25	-	-	-	1,300	
1,325	0.00	0.00	0.00	-	146.00	-	-	0.00	0.00	0.00	-	146.00	-	-	-	0.00	0.00	0.00	-	10.75	-	-	0.00	0.00	0.00	-	29.75	-	-	-	1,325	
1,350	0.00	0.00	0.00	-	126.00	-	-	0.00	0.00	0.00	-	129.00	-	-	-	0.00	0.00	0.00	-	15.50	-	-	0.00	0.00	0.00	-	37.50	-	-	-	1,350	
1,375	0.00	0.00	0.00	-	107.00	-	20	0.00	0.00	0.00	-	113.00	-	-	-	0.00	0.00	0.00	-	21.75	-	180	0.00	0.00	0.00	-	46.50	-	-	-	1,375	
1,400	0.00	0.00	0.00	-	90.00	-	80	0.00	0.00	0.00	-	98.50	-	-	-	0.00	0.00	0.00	-	29.50	-	60	0.00	0.00	0.00	-	57.00	-	-	-	1,400	
1,425	0.00	0.00	0.00	-	75.00	-	40	0.00	0.00	0.00	-	85.50	-	-	-	41.00	0.00	41.00	42.50	42.50	45	80	0.00	0.00	0.00	-	68.50	-	-	-	1,425	
1,450	0.00	0.00	0.00	-	61.00	-	20	0.00	0.00	0.00	-	73.50	-	-	-	0.00	0.00	0.00	-	50.50	-	20	0.00	0.00	0.00	-	81.50	-	-	-	1,450	
1,475	48.75	48.75	48.75	48.75	48.75	20	21	0.00	0.00	0.00	-	62.50	-	-	-	0.00	48.75	0.00	-	63.50	-	80	0.00	0.00	0.00	-	95.50	-	-	-	1,475	
1,500	0.00	0.00	0.00	-	39.25	-	21	0.00	0.00	0.00	-	53.00	-	-	-	0.00	0.00	0.00	-	78.50	-	20	0.00	0.00	0.00	-	111.00	-	-	-	1,500	
1,525	0.00	0.00	0.00	-	30.50	-	40	0.00	0.00	0.00	-	44.75	-	-	-	0.00	0.00	0.00	-	95.00	-	20	0.00	0.00	0.00	-	127.00	-	-	-	1,525	
1,550	0.00	0.00	0.00	-	23.50	-	60	0.00	0.00	0.00	-	37.25	-	-	-	0.00	0.00	0.00	-	113.00	-	-	0.00	0.00	0.00	-	145.00	-	-	-	1,550	
1,575	0.00	0.00	0.00	-	18.00	-	-	0.00	0.00	0.00	-	31.00	-	-	-	0.00	0.00	0.00	-	132.00	-	-	0.00	0.00	0.00	-	164.00	-	-	-	1,575	
1,600	0.00	0.00	0.00	-	13.50	-	-	0.00	0.00	0.00	-	25.75	-	-	-	0.00	0.00	0.00	-	152.00	-	-	0.00	0.00	0.00	-	183.00	-	-	-	1,600	
1,625	0.00	0.00	0.00	-	9.90	-	-	0.00	0.00	0.00	-	21.00	-	-	-	0.00	0.00	0.00	-	174.00	-	-	0.00	0.00	0.00	-	203.00	-	-	-	1,625	
1,650	0.00	0.00	0.00	-	7.20	-	-	0.00	0.00	0.00	-	17.25	-	-	-	0.00	0.00	0.00	-	196.00	-	-	0.00	0.00	0.00	-	224.00	-	-	-	1,650	
1,675	0.00	0.00	0.00	-	5.20	-	-	0.00	0.00	0.00	-	14.00	-	-	-	0.00	0.00	0.00	-	219.00	-	-	0.00	0.00	0.00	-	246.00	-	-	-	1,675	
1,700	0.00	0.00	0.00	-	3.70	-	-	-	-	-	-	-	-	-	-	0.00	0.00	0.00	-	243.00	-	-	-	-	-	-	-	-	-	-	1,700	
1,725	0.00	0.00	0.00	-	2.60	-	-	-	-	-	-	-	-	-	-	0.00	0.00	0.00	-	266.00	-	-	-	-	-	-	-	-	-	-	1,725	
1,750	0.00	0.00	0.00	-	1.80	-	-	-	-	-	-	-	-	-	-	0.00	0.00	0.00	-	291.00	-	-	-	-	-	-	-	-	-	-	1,750	
1,775	0.00	0.00	0.00	-	1.20	-	-	-	-	-	-	-	-	-	-	0.00	0.00	0.00	-	315.00	-	-	-	-	-	-	-	-	-	-	1,775	
1,800	0.00	0.00	0.00	-	0.81	-	-	-	-	-	-	-	-	-	-	0.00	0.00	0.00	-	339.00	-	-	-	-	-	-	-	-	-	-	1,800	
1,825	0.00	0.00	0.00	-	0.54	-	-	-	-	-	-	-	-	-	-	0.00	0.00	0.00	-	364.00	-	-	-	-	-	-	-	-	-	-	1,825	
1,850	0.00	0.00	0.00	-	0.36	-	-	-	-	-	-	-	-	-	-	0.00	0.00	0.00	-	389.00	-	-	-	-	-	-	-	-	-	-	1,850	
1,875	0.00	0.00	0.00	-	0.23	-	-	-	-	-	-	-	-	-	-	0.00	0.00	0.00	-	414.00	-	-	-	-	-	-	-	-	-	-	1,875	
1,900	0.00	0.00	0.00	-	0.15	-	-	-	-	-	-	-	-	-	-	0.00	0.00	0.00	-	439.00	-	-	-	-	-	-	-	-	-	-	1,900	
1,925	0.00	0.00	0.00	-	0.09	-	-	-	-	-	-	-	-	-	-	0.00	0.00	0.00	-	464.00	-	-	-	-	-	-	-	-	-	-	1,925	

FTSE/Athex Large Cap

(Trade Unit: 1 Index Point x 2€ - Exercise Style: European, Cash Settlement)

Call Options															Put Options																	
Exercise Price	June 2020						July 2020						Other Months			June 2020						July 2020						Other Months			Exercise Price	
	Open price	Price max	Price min	Last price	Closing price	Volume	Open Interest	Open price	Price max	Price min	Last price	Closing price	Volume	Open Interest	Volume	Open Interest	Open price	Price max	Price min	Last price	Closing price	Volume	Open Interest	Open price	Price max	Price min	Last price	Closing price	Volume	Open Interest		Volume
1,950	0.00	0.00	0.00	-	0.06	-	-	-	-	-	-	-	-	-	-	0.00	0.00	0.00	-	488.00	-	-	-	-	-	-	-	-	-	-	-	1,950
1,975	0.00	0.00	0.00	-	0.04	-	-	-	-	-	-	-	-	-	-	0.00	0.00	0.00	-	513.00	-	-	-	-	-	-	-	-	-	-	-	1,975
2,000	0.00	0.00	0.00	-	0.02	-	-	-	-	-	-	-	-	-	-	0.00	0.00	0.00	-	538.00	-	-	-	-	-	-	-	-	-	-	-	2,000
2,050	0.00	0.00	0.00	-	0.01	-	-	-	-	-	-	-	-	-	-	0.00	0.00	0.00	-	588.00	-	-	-	-	-	-	-	-	-	-	-	2,050
2,100	0.00	0.00	0.00	-	0.01	-	-	-	-	-	-	-	-	-	-	0.00	0.00	0.00	-	638.00	-	-	-	-	-	-	-	-	-	-	-	2,100
2,150	0.00	0.00	0.00	-	0.02	-	-	-	-	-	-	-	-	-	-	0.00	0.00	0.00	-	688.00	-	-	-	-	-	-	-	-	-	-	-	2,150
2,200	0.00	0.00	0.00	-	0.01	-	-	-	-	-	-	-	-	-	-	0.00	0.00	0.00	-	738.00	-	-	-	-	-	-	-	-	-	-	-	2,200
2,250	0.00	0.00	0.00	-	0.01	-	-	-	-	-	-	-	-	-	-	0.00	0.00	0.00	-	788.00	-	-	-	-	-	-	-	-	-	-	-	2,250
2,300	0.00	0.00	0.00	-	0.01	-	-	-	-	-	-	-	-	-	-	0.00	0.00	0.00	-	838.00	-	-	-	-	-	-	-	-	-	-	-	2,300
2,350	0.00	0.00	0.00	-	0.01	-	-	-	-	-	-	-	-	-	-	0.00	0.00	0.00	-	888.00	-	-	-	-	-	-	-	-	-	-	-	2,350
2,400	0.00	0.00	0.00	-	0.02	-	-	-	-	-	-	-	-	-	-	0.00	0.00	0.00	-	938.00	-	-	-	-	-	-	-	-	-	-	-	2,400
2,450	0.00	0.00	0.00	-	0.01	-	-	-	-	-	-	-	-	-	-	0.00	0.00	0.00	-	987.00	-	-	-	-	-	-	-	-	-	-	-	2,450
2,500	0.00	0.00	0.00	-	0.01	-	-	-	-	-	-	-	-	-	-	0.00	0.00	0.00	-	1,037.00	-	-	-	-	-	-	-	-	-	-	-	2,500
2,550	0.00	0.00	0.00	-	0.01	-	-	-	-	-	-	-	-	-	-	0.00	0.00	0.00	-	1,087.00	-	-	-	-	-	-	-	-	-	-	-	2,550
2,600	0.00	0.00	0.00	-	0.01	-	-	-	-	-	-	-	-	-	-	0.00	0.00	0.00	-	1,137.00	-	-	-	-	-	-	-	-	-	-	-	2,600
Totals:						20	302						0	0	0	0					45	460						0	0	0	0	
Number of Trades:							1						0	0	0	0					4						0	0	0	0		

ALPHA BANK (CR)

(Contract Size: 100 Securities, Exercise Style: American, Physical Delivery)

Call Options														Put Options																		
Exercise Price	June 2020						July 2020						Other Months		June 2020						July 2020						Other Months		Exercise Price			
	Open price	Price max	Price min	Last price	Closing price	Volume	Open Interest	Open price	Price max	Price min	Last price	Closing price	Volume	Open Interest	Volume	Open Interest	Open price	Price max	Price min	Last price	Closing price	Volume	Open Interest	Open price	Price max	Price min	Last price	Closing price		Volume	Open Interest	Volume
0.250	0.000	0.000	0.000	0.302	-	-	0.000	0.000	0.000	0.303	-	-				0.000	0.000	0.000	0.001	-	-			0.000	0.000	0.000	0.001	-	-			0.003
0.300	0.000	0.000	0.000	0.253	-	-	0.000	0.000	0.000	0.254	-	-				0.000	0.000	0.000	0.001	-	-			0.000	0.000	0.000	0.001	-	-			0.003
0.350	0.000	0.000	0.000	0.204	-	-	0.000	0.000	0.000	0.206	-	-				0.000	0.000	0.000	0.002	-	-			0.000	0.000	0.000	0.003	-	-			0.004
0.400	0.000	0.000	0.000	0.159	-	-	0.000	0.000	0.000	0.162	-	-				0.000	0.000	0.000	0.006	-	-			0.000	0.000	0.000	0.009	-	-			0.004
0.450	0.000	0.000	0.000	0.118	-	-	0.000	0.000	0.000	0.124	-	-				0.000	0.000	0.000	0.015	-	-			0.000	0.000	0.000	0.020	-	-			0.005
0.500	0.000	0.000	0.000	0.084	-	-	0.000	0.000	0.000	0.091	-	200				0.000	0.000	0.000	0.031	-	-			0.000	0.000	0.000	0.038	-	-			0.005
0.550	0.000	0.000	0.000	0.057	-	-	0.000	0.000	0.000	0.065	-	-				0.000	0.000	0.000	0.055	-	-			0.000	0.000	0.000	0.062	-	-			0.006
0.600	0.000	0.000	0.000	0.038	-	40	0.000	0.000	0.000	0.046	-	-				0.000	0.000	0.000	0.085	-	-			0.000	0.000	0.000	0.092	-	-			0.006
0.650	0.000	0.000	0.000	0.025	-	-	0.000	0.000	0.000	0.031	-	-				0.000	0.000	0.000	0.122	-	-			0.000	0.000	0.000	0.128	-	-			0.007
0.700	0.000	0.000	0.000	0.015	-	-	0.000	0.000	0.000	0.021	-	-				0.000	0.000	0.000	0.162	-	-			0.000	0.000	0.000	0.167	-	-			0.007
0.750	0.000	0.000	0.000	0.009	-	-	0.000	0.000	0.000	0.014	-	-				0.000	0.000	0.000	0.206	-	-			0.000	0.000	0.000	0.211	-	-			0.008
0.800	0.000	0.000	0.000	0.006	-	-	0.000	0.000	0.000	0.010	-	-				0.000	0.000	0.000	0.253	-	-			0.000	0.000	0.000	0.256	-	-			0.008
0.850	0.000	0.000	0.000	0.003	-	-	0.000	0.000	0.000	0.006	-	-				0.000	0.000	0.000	0.300	-	-			0.000	0.000	0.000	0.302	-	-			0.009
0.900	0.000	0.000	0.000	0.002	-	-	0.000	0.000	0.000	0.004	-	-				0.000	0.000	0.000	0.349	-	-			0.000	0.000	0.000	0.350	-	-			0.009
0.950	0.000	0.000	0.000	0.001	-	-	0.000	0.000	0.000	0.003	-	-				0.000	0.000	0.000	0.398	-	-			0.000	0.000	0.000	0.399	-	-			0.010
1.000	0.000	0.000	0.000	0.001	-	-					-	-				0.000	0.000	0.000	0.448	-	-											0.010
1.100	0.000	0.000	0.000	0.001	-	-					-	-				0.000	0.000	0.000	0.548	-	-											0.011
1.200	0.000	0.000	0.000	0.004	-	-					-	-				0.000	0.000	0.000	0.648	-	-											0.012
1.300	0.000	0.000	0.000	0.002	-	-					-	-				0.000	0.000	0.000	0.748	-	-											0.013
1.400	0.000	0.000	0.000	0.001	-	-					-	-				0.000	0.000	0.000	0.848	-	-											0.014
1.500	0.000	0.000	0.000	0.001	-	-					-	-				0.000	0.000	0.000	0.948	-	-											0.015
1.600	0.000	0.000	0.000	0.001	-	-					-	-				0.000	0.000	0.000	1.05	-	-											0.016
1.700	0.000	0.000	0.000	0.001	-	-					-	-				0.000	0.000	0.000	1.15	-	-											0.017
1.800	0.000	0.000	0.000	0.001	-	-					-	-				0.000	0.000	0.000	1.25	-	-											0.018
1.900	0.000	0.000	0.000	0.001	-	-					-	-				0.000	0.000	0.000	1.35	-	-											0.019
2.000	0.000	0.000	0.000	0.001	-	-					-	-				0.000	0.000	0.000	1.45	-	-											0.020
2.200	0.000	0.000	0.000	0.001	-	-					-	-				0.000	0.000	0.000	1.65	-	-											0.022
2.400	0.000	0.000	0.000	0.001	-	-					-	-				0.000	0.000	0.000	1.85	-	-											0.024
2.600	0.000	0.000	0.000	0.001	-	-					-	-				0.000	0.000	0.000	2.05	-	-											0.026
2.800	0.000	0.000	0.000	0.001	-	-					-	-				0.000	0.000	0.000	2.25	-	-											0.028
Totals:						0	40						0	200	0	0							0	0							0	0
Number of Trades:						0							0		0								0.00								0	0

NATIONAL BANK (CR)

(Contract Size: 100 Securities, Exercise Style: American, Physical Delivery)

Call Options														Put Options																		
Exercise Price	June 2020						July 2020						Other Months		June 2020						July 2020						Other Months		Exercise Price			
	Open price	Price max	Price min	Last price	Closing price	Volume	Open Interest	Open price	Price max	Price min	Last price	Closing price	Volume	Open Interest	Volume	Open Interest	Open price	Price max	Price min	Last price	Closing price	Volume	Open Interest	Open price	Price max	Price min	Last price	Closing price		Volume	Open Interest	Volume
0.600	0.000	0.000	0.000		0.411	-	-									0.000	0.000	0.000		0.003	-	-										0.006
0.650	0.000	0.000	0.000		0.362	-	-									0.000	0.000	0.000		0.001	-	-										0.007
0.700	0.000	0.000	0.000		0.314	-	-	0.000	0.000	0.000		0.320	-	-		0.000	0.000	0.000		0.002	-	-	0.000	0.000	0.000		0.008	-	-		0.007	
0.750	0.000	0.000	0.000		0.267	-	-	0.000	0.000	0.000		0.276	-	-		0.000	0.000	0.000		0.006	-	-	0.000	0.000	0.000		0.014	-	-		0.008	
0.800	0.000	0.000	0.000		0.223	-	-	0.000	0.000	0.000		0.236	-	-		0.000	0.000	0.000		0.011	-	-	0.000	0.000	0.000		0.023	-	-		0.008	
0.850	0.000	0.000	0.000		0.182	-	-	0.000	0.000	0.000		0.199	-	-		0.000	0.000	0.000		0.021	-	-	0.000	0.000	0.000		0.037	-	-		0.009	
0.900	0.000	0.000	0.000		0.146	-	-	0.000	0.000	0.000		0.166	-	-		0.000	0.000	0.000		0.034	-	-	0.000	0.000	0.000		0.053	-	-		0.009	
0.950	0.000	0.000	0.000		0.114	-	-	0.000	0.000	0.000		0.137	-	-		0.000	0.000	0.000		0.053	-	-	0.000	0.000	0.000		0.074	-	-		0.010	
1.000	0.000	0.000	0.000		0.088	-	25	0.000	0.000	0.000		0.111	-	-		0.000	0.000	0.000		0.076	-	1	0.000	0.000	0.000		0.098	-	-		0.010	
1.100	0.000	0.000	0.000		0.049	-	-	0.000	0.000	0.000		0.072	-	-		0.000	0.000	0.000		0.138	-	-	0.000	0.000	0.000		0.159	-	-		0.011	
1.200	0.000	0.000	0.000		0.025	-	55	0.000	0.000	0.000		0.045	-	-		0.000	0.000	0.000		0.213	-	-	0.000	0.000	0.000		0.232	-	-		0.012	
1.300	0.000	0.000	0.000		0.013	-	-	0.000	0.000	0.000		0.028	-	-		0.000	0.000	0.000		0.301	-	-	0.000	0.000	0.000		0.314	-	-		0.013	
1.400	0.000	0.000	0.000		0.006	-	-	0.000	0.000	0.000		0.016	-	-		0.000	0.000	0.000		0.394	-	-	0.000	0.000	0.000		0.403	-	-		0.014	
1.500	0.000	0.000	0.000		0.003	-	-	0.000	0.000	0.000		0.009	-	-		0.000	0.000	0.000		0.491	-	-	0.000	0.000	0.000		0.497	-	-		0.015	
1.600	0.000	0.000	0.000		0.001	-	-	0.000	0.000	0.000		0.005	-	-		0.000	0.000	0.000		0.590	-	-	0.000	0.000	0.000		0.593	-	-		0.016	
1.700	0.000	0.000	0.000		0.002	-	-	0.000	0.000	0.000		0.003	-	-		0.000	0.000	0.000		0.690	-	-	0.000	0.000	0.000		0.691	-	-		0.017	
1.800	0.000	0.000	0.000		0.001	-	-	0.000	0.000	0.000		0.002	-	-		0.000	0.000	0.000		0.790	-	-	0.000	0.000	0.000		0.790	-	-		0.018	
1.900	0.000	0.000	0.000		0.001	-	-									0.000	0.000	0.000		0.890	-	-									0.019	
2.000	0.000	0.000	0.000		0.001	-	-									0.000	0.000	0.000		0.990	-	-									0.020	
2.200	0.000	0.000	0.000		0.001	-	-									0.000	0.000	0.000		1.19	-	-									0.022	
2.400	0.000	0.000	0.000		0.001	-	-									0.000	0.000	0.000		1.39	-	-									0.024	
2.600	0.000	0.000	0.000		0.001	-	-									0.000	0.000	0.000		1.59	-	125									0.026	
2.800	0.000	0.000	0.000		0.001	-	-									0.000	0.000	0.000		1.79	-	-									0.028	
3.000	0.000	0.000	0.000		0.001	-	-									0.000	0.000	0.000		1.99	-	154									0.030	
3.200	0.000	0.000	0.000		0.001	-	-									0.000	0.000	0.000		2.19	-	-									0.032	
3.400	0.000	0.000	0.000		0.002	-	-									0.000	0.000	0.000		2.39	-	-									0.034	
3.600	0.000	0.000	0.000		0.001	-	-									0.000	0.000	0.000		2.59	-	-									0.036	
3.800	0.000	0.000	0.000		0.001	-	-									0.000	0.000	0.000		2.79	-	-									0.038	
4.000	0.000	0.000	0.000		0.001	-	-									0.000	0.000	0.000		2.99	-	-									0.040	
4.400	0.000	0.000	0.000		0.001	-	-									0.000	0.000	0.000		3.39	-	-									0.044	
Totals:						0	80						0	0	0	0					0	280						0	0	0	0	
Number of Trades:						0							0		0						0.00						0		0			

OPAP (CR)

(Contract Size: 100 Securities, Exercise Style: American, Physical Delivery)

Exercise Price	Call Options														Volume	Open Interest	Put Options														Volume	Open Interest	Exercise Price
	June 2020						July 2020						Other Months				June 2020						July 2020						Other Months				
	Open price	Price max	Price min	Last price	Closing price	Volume	Open Interest	Open price	Price max	Price min	Last price	Closing price	Volume	Open Interest			Open price	Price max	Price min	Last price	Closing price	Volume	Open Interest	Open price	Price max	Price min	Last price	Closing price	Volume	Open Interest			
4.000	0.000	0.000	0.000	4.09	-	-									0.000	0.000	0.000	0.001	-	-											0.040		
4.400	0.000	0.000	0.000	3.69	-	-									0.000	0.000	0.000	0.001	-	-											0.044		
4.800	0.000	0.000	0.000	3.29	-	-	0.000	0.000	0.000		3.30	-	-		0.000	0.000	0.000	0.001	-	-	0.000	0.000	0.000		0.002	-	-			0.048			
5.200	0.000	0.000	0.000	2.89	-	-	0.000	0.000	0.000		2.90	-	-		0.000	0.000	0.000	0.001	-	-	0.000	0.000	0.000		0.006	-	-			0.052			
5.600	0.000	0.000	0.000	2.49	-	-	0.000	0.000	0.000		2.52	-	-		0.000	0.000	0.000	0.002	-	-	0.000	0.000	0.000		0.018	-	-			0.056			
6.000	0.000	0.000	0.000	2.10	-	-	0.000	0.000	0.000		2.14	-	-		0.000	0.000	0.000	0.007	-	11	0.000	0.000	0.000		0.041	-	-			0.060			
6.400	0.000	0.000	0.000	1.71	-	-	0.000	0.000	0.000		1.79	-	-		0.000	0.000	0.000	0.023	-	-	0.000	0.000	0.000		0.085	-	-			0.064			
6.800	0.000	0.000	0.000	1.35	-	-	0.000	0.000	0.000		1.46	-	-		0.000	0.000	0.000	0.060	-	11	0.000	0.000	0.000		0.155	-	-			0.068			
7.200	0.000	0.000	0.000	1.02	-	20	0.000	0.000	0.000		1.16	-	-		0.000	0.000	0.000	0.132	-	5	0.000	0.000	0.000		0.261	-	-			0.072			
7.600	0.000	0.000	0.000	0.744	-	-	0.000	0.000	0.000		0.912	-	-		0.280	0.280	0.280	0.280	0.280	11	-	0.000	0.000	0.000		0.407	-	-			0.076		
8.000	0.000	0.000	0.000	0.515	-	20	0.000	0.000	0.000		0.700	-	-		0.000	0.000	0.000	0.421	-	10	0.000	0.000	0.000		0.595	-	-			0.080			
8.400	0.000	0.000	0.000	0.338	-	20	0.000	0.000	0.000		0.527	-	-		0.000	0.000	0.000	0.644	-	-	0.000	0.000	0.000		0.822	-	-			0.084			
8.800	0.000	0.000	0.000	0.213	-	35	0.000	0.000	0.000		0.389	-	-		0.000	0.000	0.000	0.920	-	-	0.000	0.000	0.000		1.08	-	-			0.088			
9.200	0.000	0.000	0.000	0.129	-	5	0.000	0.000	0.000		0.280	-	-		0.000	0.000	0.000	1.24	-	-	0.000	0.000	0.000		1.37	-	-			0.092			
9.600	0.000	0.000	0.000	0.075	-	-	0.000	0.000	0.000		0.196	-	-		0.000	0.000	0.000	1.58	-	-	0.000	0.000	0.000		1.69	-	-			0.096			
10.000	0.000	0.000	0.000	0.042	-	-	0.000	0.000	0.000		0.139	-	-		0.000	0.000	0.000	1.95	-	-	0.000	0.000	0.000		2.03	-	-			0.100			
11.000	0.000	0.000	0.000	0.008	-	-						-	-		0.000	0.000	0.000	2.92	-	-						-	-			0.110			
12.000	0.000	0.000	0.000	0.001	-	-						-	-		0.000	0.000	0.000	3.92	-	-						-	-			0.120			
13.000	0.000	0.000	0.000	0.001	-	-						-	-		0.000	0.000	0.000	4.92	-	-						-	-			0.130			
14.000	0.000	0.000	0.000	0.001	-	-						-	-		0.000	0.000	0.000	5.92	-	-						-	-			0.140			
15.000	0.000	0.000	0.000	0.001	-	-						-	-		0.000	0.000	0.000	6.92	-	-						-	-			0.150			
16.000	0.000	0.000	0.000	0.001	-	-						-	-		0.000	0.000	0.000	7.92	-	-						-	-			0.160			
17.000	0.000	0.000	0.000	0.001	-	-						-	-		0.000	0.000	0.000	8.92	-	-						-	-			0.170			
Totals:					0	100						0	0	0					0	37						0	0	0	0				
Number of Trades:					0							0		0						1.00						0		0					

OTE (CR)

(Contract Size: 100 Securities, Exercise Style: American, Physical Delivery)

Exercise Price	Call Options														Put Options																		
	June 2020						July 2020						Other Months		June 2020						July 2020						Other Months		Exercise Price				
	Open price	Price max	Price min	Last price	Closing price	Volume	Open Interest	Open price	Price max	Price min	Last price	Closing price	Volume	Open Interest	Volume	Open Interest	Open price	Price max	Price min	Last price	Closing price	Volume	Open Interest	Open price	Price max	Price min	Last price	Closing price		Volume	Open Interest	Volume	Open Interest
7.200	0.000	0.000	0.000		5.11	-	-										0.000	0.000	0.000		0.001	-	-										
7.600	0.000	0.000	0.000		4.71	-	-										0.000	0.000	0.000		0.001	-	-										0.076
8.000	0.000	0.000	0.000		4.31	-	-										0.000	0.000	0.000		0.001	-	-										0.080
8.400	0.000	0.000	0.000		3.92	-	-	0.000	0.000	0.000		3.95	-	-			0.000	0.000	0.000		0.001	-	-	0.000	0.000	0.000		0.018	-	-			0.084
8.800	0.000	0.000	0.000		3.52	-	-	0.000	0.000	0.000		3.56	-	-			0.000	0.000	0.000		0.003	-	-	0.000	0.000	0.000		0.033	-	-			0.088
9.200	0.000	0.000	0.000		3.12	-	-	0.000	0.000	0.000		3.19	-	-			0.000	0.000	0.000		0.008	-	-	0.000	0.000	0.000		0.061	-	-			0.092
9.600	0.000	0.000	0.000		2.74	-	-	0.000	0.000	0.000		2.83	-	-			0.000	0.000	0.000		0.018	-	-	0.000	0.000	0.000		0.101	-	-			0.096
10.000	0.000	0.000	0.000		2.36	-	-	0.000	0.000	0.000		2.49	-	-			0.000	0.000	0.000		0.039	-	5	0.000	0.000	0.000		0.157	-	-			0.100
11.000	0.000	0.000	0.000		1.49	-	-	0.000	0.000	0.000		1.72	-	-			0.000	0.000	0.000		0.174	-	10	0.000	0.000	0.000		0.388	-	-			0.110
12.000	0.000	0.000	0.000		0.828	-	-	0.000	0.000	0.000		1.13	-	-			0.000	0.000	0.000		0.508	-	-	0.000	0.000	0.000		0.793	-	-			0.120
13.000	0.000	0.000	0.000		0.396	-	36	0.000	0.000	0.000		0.687	-	-			0.000	0.000	0.000		1.08	-	-	0.000	0.000	0.000		1.35	-	-			0.130
14.000	0.000	0.000	0.000		0.164	-	20	0.000	0.000	0.000		0.405	-	-			0.000	0.000	0.000		1.84	-	-	0.000	0.000	0.000		2.07	-	-			0.140
15.000	0.000	0.000	0.000		0.058	-	-	0.000	0.000	0.000		0.225	-	-			0.000	0.000	0.000		2.74	-	-	0.000	0.000	0.000		2.89	-	-			0.150
16.000	0.000	0.000	0.000		0.018	-	-	0.000	0.000	0.000		0.118	-	-			0.000	0.000	0.000		3.71	-	-	0.000	0.000	0.000		3.78	-	-			0.160
17.000	0.000	0.000	0.000		0.005	-	-	0.000	0.000	0.000		0.059	-	-			0.000	0.000	0.000		4.70	-	-	0.000	0.000	0.000		4.73	-	-			0.170
18.000	0.000	0.000	0.000		0.001	-	-										0.000	0.000	0.000		5.70	-	-										0.180
19.000	0.000	0.000	0.000		0.001	-	-										0.000	0.000	0.000		6.70	-	-										0.190
Totals:						0	56						0	0	0	0						15						0	0	0	0		
Number of Trades:							0						0		0							0.00						0		0			

PIRAEUS BANK (CR)

(Contract Size: 100 Securities, Exercise Style: American, Physical Delivery)

Call Options															Put Options																	
June 2020							July 2020							Other Months		June 2020							July 2020							Other Months		Exercise Price
Open price	Price max	Price min	Last price	Closing price	Volume	Open Interest	Open price	Price max	Price min	Last price	Closing price	Volume	Open Interest	Volume	Open Interest	Open price	Price max	Price min	Last price	Closing price	Volume	Open Interest	Open price	Price max	Price min	Last price	Closing price	Volume	Open Interest	Volume	Open Interest	
0.700	0.000	0.000	0.000	0.392	-	-										0.000	0.000	0.000	0.001	-	-											0.007
0.750	0.000	0.000	0.000	0.342	-	-										0.000	0.000	0.000	0.001	-	-											0.008
0.800	0.000	0.000	0.000	0.294	-	-	0.000	0.000	0.000		0.306	-	-			0.000	0.000	0.000	0.003	-	-	0.000	0.000	0.000	0.014	-	-				0.008	
0.850	0.000	0.000	0.000	0.248	-	-	0.000	0.000	0.000		0.266	-	-			0.000	0.000	0.000	0.006	-	-	0.000	0.000	0.000	0.023	-	-				0.009	
0.900	0.000	0.000	0.000	0.204	-	-	0.000	0.000	0.000		0.228	-	-			0.000	0.000	0.000	0.013	-	-	0.000	0.000	0.000	0.035	-	-				0.009	
0.950	0.000	0.000	0.000	0.164	-	-	0.000	0.000	0.000		0.193	-	-			0.000	0.000	0.000	0.023	-	-	0.000	0.000	0.000	0.050	-	-				0.010	
1.000	0.000	0.000	0.000	0.129	-	-	0.000	0.000	0.000		0.162	-	-			0.000	0.000	0.000	0.038	-	-	0.000	0.000	0.000	0.069	-	-				0.010	
1.100	0.000	0.000	0.000	0.074	-	-	0.000	0.000	0.000		0.111	-	-			0.000	0.000	0.000	0.082	-	-	0.000	0.000	0.000	0.118	-	-				0.011	
1.200	0.000	0.000	0.000	0.038	-	50	0.000	0.000	0.000		0.074	-	-			0.000	0.000	0.000	0.147	-	-	0.000	0.000	0.000	0.181	-	-				0.012	
1.300	0.000	0.000	0.000	0.019	-	-	0.000	0.000	0.000		0.048	-	-			0.000	0.000	0.000	0.227	-	-	0.000	0.000	0.000	0.254	-	-				0.013	
1.400	0.000	0.000	0.000	0.008	-	-	0.000	0.000	0.000		0.030	-	-			0.000	0.000	0.000	0.316	-	-	0.000	0.000	0.000	0.337	-	-				0.014	
1.500	0.000	0.000	0.000	0.003	-	-	0.000	0.000	0.000		0.019	-	-			0.000	0.000	0.000	0.412	-	-	0.000	0.000	0.000	0.425	-	-				0.015	
1.600	0.000	0.000	0.000	0.001	-	-	0.000	0.000	0.000		0.011	-	-			0.000	0.000	0.000	0.510	-	-	0.000	0.000	0.000	0.518	-	-				0.016	
1.700	0.000	0.000	0.000	0.001	-	-	0.000	0.000	0.000		0.007	-	-			0.000	0.000	0.000	0.610	-	-	0.000	0.000	0.000	0.614	-	-				0.017	
1.800	0.000	0.000	0.000	0.001	-	-	0.000	0.000	0.000		0.004	-	-			0.000	0.000	0.000	0.710	-	-	0.000	0.000	0.000	0.711	-	-				0.018	
1.900	0.000	0.000	0.000	0.001	-	-										0.000	0.000	0.000	0.810	-	-										0.019	
2.000	0.000	0.000	0.000	0.001	-	-										0.000	0.000	0.000	0.910	-	-										0.020	
2.200	0.000	0.000	0.000	0.001	-	-										0.000	0.000	0.000	1.11	-	-										0.022	
2.400	0.000	0.000	0.000	0.001	-	-										0.000	0.000	0.000	1.31	-	-										0.024	
2.600	0.000	0.000	0.000	0.001	-	-										0.000	0.000	0.000	1.51	-	-										0.026	
2.800	0.000	0.000	0.000	0.001	-	-										0.000	0.000	0.000	1.71	-	-										0.028	
3.000	0.000	0.000	0.000	0.001	-	-										0.000	0.000	0.000	1.91	-	-										0.030	
3.200	0.000	0.000	0.000	0.001	-	-										0.000	0.000	0.000	2.11	-	-										0.032	
3.400	0.000	0.000	0.000	0.001	-	-										0.000	0.000	0.000	2.31	-	-										0.034	
3.600	0.000	0.000	0.000	0.001	-	-										0.000	0.000	0.000	2.51	-	-										0.036	
3.800	0.000	0.000	0.000	0.001	-	-										0.000	0.000	0.000	2.71	-	-										0.038	
4.000	0.000	0.000	0.000	0.007	-	-										0.000	0.000	0.000	2.91	-	-										0.040	
4.400	0.000	0.000	0.000	0.002	-	-										0.000	0.000	0.000	3.31	-	-										0.044	
4.800	0.000	0.000	0.000	0.001	-	-										0.000	0.000	0.000	3.71	-	-										0.048	
Totals:					0	50						0	0	0	0	0						0	0							0	0	
Number of Trades:					0							0	0	0			0.00						0							0		

PPC (CR)

(Contract Size: 100 Securities, Exercise Style: American, Physical Delivery)

Call Options															Put Options																		
June 2020							July 2020							Other Months		June 2020							July 2020							Other Months		Exercise Price	
Open price	Price max	Price min	Last price	Closing price	Volume	Open Interest	Open price	Price max	Price min	Last price	Closing price	Volume	Open Interest	Volume	Open Interest	Open price	Price max	Price min	Last price	Closing price	Volume	Open Interest	Open price	Price max	Price min	Last price	Closing price	Volume	Open Interest	Volume	Open Interest		
1.000	0.000	0.000	0.000	1.60	-	-										0.000	0.000	0.000	0.001	-	-											0.010	
1.100	0.000	0.000	0.000	1.50	-	-										0.000	0.000	0.000	0.001	-	-											0.011	
1.200	0.000	0.000	0.000	1.40	-	-										0.000	0.000	0.000	0.001	-	-											0.012	
1.300	0.000	0.000	0.000	1.30	-	-										0.000	0.000	0.000	0.001	-	-											0.013	
1.400	0.000	0.000	0.000	1.20	-	-										0.000	0.000	0.000	0.001	-	-											0.014	
1.500	0.000	0.000	0.000	1.10	-	-										0.000	0.000	0.000	0.002	-	-											0.015	
1.600	0.000	0.000	0.000	1.00	-	-										0.000	0.000	0.000	0.001	-	-											0.016	
1.700	0.000	0.000	0.000	0.906	-	-	0.000	0.000	0.000	0.923	-	-				0.000	0.000	0.000	0.003	-	-	0.000	0.000	0.000	0.017	-	-					0.017	
1.800	0.000	0.000	0.000	0.809	-	-	0.000	0.000	0.000	0.833	-	-				0.000	0.000	0.000	0.006	-	-	0.000	0.000	0.000	0.027	-	-					0.018	
1.900	0.000	0.000	0.000	0.715	-	-	0.000	0.000	0.000	0.747	-	-				0.000	0.000	0.000	0.011	-	-	0.000	0.000	0.000	0.041	-	-					0.019	
2.000	0.000	0.000	0.000	0.624	-	-	0.000	0.000	0.000	0.667	-	-				0.000	0.000	0.000	0.020	-	-	0.000	0.000	0.000	0.060	-	-					0.020	
2.200	0.000	0.000	0.000	0.457	-	-	0.000	0.000	0.000	0.520	-	-				0.000	0.000	0.000	0.053	-	-	0.000	0.000	0.000	0.113	-	-					0.022	
2.400	0.000	0.000	0.000	0.319	-	-	0.000	0.000	0.000	0.396	-	-				0.000	0.000	0.000	0.115	-	-	0.000	0.000	0.000	0.188	-	-					0.024	
2.600	0.000	0.000	0.000	0.209	-	-	0.000	0.000	0.000	0.296	-	-				0.000	0.000	0.000	0.205	-	-	0.000	0.000	0.000	0.288	-	-					0.026	
2.800	0.000	0.000	0.000	0.133	-	-	0.000	0.000	0.000	0.217	-	-				0.000	0.000	0.000	0.329	-	-	0.000	0.000	0.000	0.409	-	-					0.028	
3.000	0.000	0.000	0.000	0.080	-	-	0.000	0.000	0.000	0.158	-	-				0.000	0.000	0.000	0.476	-	-	0.000	0.000	0.000	0.549	-	-					0.030	
3.200	0.000	0.000	0.000	0.046	-	-	0.000	0.000	0.000	0.113	-	-				0.000	0.000	0.000	0.642	-	-	0.000	0.000	0.000	0.704	-	-					0.032	
3.400	0.000	0.000	0.000	0.026	-	-	0.000	0.000	0.000	0.079	-	-				0.000	0.000	0.000	0.822	-	-	0.000	0.000	0.000	0.871	-	-					0.034	
3.600	0.000	0.000	0.000	0.014	-	-	0.000	0.000	0.000	0.054	-	-				0.000	0.000	0.000	1.01	-	-	0.000	0.000	0.000	1.05	-	-					0.036	
3.800	0.000	0.000	0.000	0.007	-	-	0.000	0.000	0.000	0.038	-	-				0.000	0.000	0.000	1.20	-	-	0.000	0.000	0.000	1.23	-	-					0.038	
4.000	0.000	0.000	0.000	0.004	-	-					-	-				0.000	0.000	0.000	1.40	-	-					-	-					0.040	
4.400	0.000	0.000	0.000	0.001	-	-					-	-				0.000	0.000	0.000	1.80	-	-					-	-					0.044	
4.800	0.000	0.000	0.000	0.001	-	-					-	-				0.000	0.000	0.000	2.20	-	-					-	-					0.048	
5.200	0.000	0.000	0.000	0.001	-	-					-	-				0.000	0.000	0.000	2.60	-	-					-	-					0.052	
5.600	0.000	0.000	0.000	0.001	-	-					-	-				0.000	0.000	0.000	3.00	-	-					-	-					0.056	
6.000	0.000	0.000	0.000	0.001	-	-					-	-				0.000	0.000	0.000	3.40	-	-					-	-					0.060	
6.400	0.000	0.000	0.000	0.001	-	-					-	-				0.000	0.000	0.000	3.80	-	-					-	-					0.064	
Totals:					0	0						0	0	0	0	0						0	0	0						0	0	0	
Number of Trades:					0							0	0			0.00						0							0				0

Lending Products	Underlying Title	Open Interest[5]	Multilateral Transactions[1]				Bilateral Transactions[2]		Stock Borrowing through OTC (volume)[3]
			Volume(Offered)	Average Weighted	Transactions volume	Average Weighted	Transactions Volume	Average Weighted	Transactions Volume
ADMIEBOR	ADMIE (IPTO) HOLDING S.A. (CR)	17,334	---	---	---	---	---	157,344	
AEGNBOR	AEGEAN AIRLINES (CR)	2,430	---	---	1,000	2.65%	---	54,074	
ALPHABOR	ALPHA BANK (CR)	8,589	---	---	---	---	---	57,686,448	
ALMYBOR	ALUMIL (CR)	---	---	---	---	---	---	---	
TATTBOR	ATTICA BANK S.A. (CR)	14,603	---	---	---	---	---	370	
EEEBOR	CC HBC AG (CR)	2	---	---	---	---	---	70,546	
CENERBOR	CENERGY HOLDINGS (CB)	400	---	---	---	---	---	---	
ELLAKTORBOR	ELLAKTOR (CR)	---	---	---	---	---	---	187,898	
EUROBBOR	EUROBANK HOLDINGS (CR)	---	---	---	50,000	3.41%	---	65,216,746	
EYDAPBOR	EYDAP S.A. (CR)	200	---	---	---	---	---	232,781	
FFGRPBOR	FOLLI FOLLIE (CR)	---	---	---	---	---	---	1,120,847	
FOYRKBOR	FOURLIS (CR)	3,000	---	---	---	---	---	23,892	
GEKTERNABOR	GEK TERNA (CR)	5,800	---	---	---	---	---	35,193	
SARBOR	GR. SARANTIS S.A. (CR)	---	---	---	---	---	---	16,512	
EXAEBOR	HELLENIC EXCHANGES-A.S.E. (CR)	94,500	---	---	---	---	---	163,165	
ELPEBOR	HELLENIC PETROLEUM (CR)	4,500	---	---	---	---	---	70,217	
INTRKBOR	INTRACOM HOLDINGS (CR)	2,100	---	---	---	---	---	---	
INLOTBOR	INTRALOT (CR)	500	---	---	---	---	---	104,512	
BELABOR	JUMBO SA (CR)	17,600	---	---	100	2.65%	---	115,098	
LAMDABOR	LAMDA DEVELOPMENT SA (CR)	930	---	---	---	---	---	40,328	
MIGBOR	MARFIN INVESTMENT GROUP (CR)	---	---	---	---	---	---	794,474	
MOHBOR	MOTOR OIL (CR)	3,900	---	---	---	---	---	10,420	
MYTILBOR	MYTILINEOS (CR)	---	---	---	1,500	2.82%	---	25,742	
ETEBOR	NATIONAL BANK (CR)	31,129	---	---	---	---	---	13,580,738	
OPAPBOR	OPAP (CR)	53,350	---	---	---	---	---	1,307,594	
HTOBOR	OTE (CR)	6,017	---	---	---	---	---	535,504	
PPABOR	P.P.A. S.A. (CR)	250	---	---	---	---	---	2,901	
TPEIRBOR	PIRAEUS BANK (CR)	30,079	---	---	---	---	---	19,167,667	
PLAISBOR	PLAISIO COMPUTERS SA (CR)	---	---	---	---	---	---	4,000	
PPCBOR	PPC (CR)	---	---	---	10,000	3.42%	---	5,857,792	
QUALBOR	QUALITY & RELIABILITY SA (CR)	---	---	---	---	---	---	---	

Stock Lending Notes

[1] - Multilateral contracts Lending or Borrowing as per Methods 8-1, 8-2 and 8-3-3 (According to ATHEX BoD Resolution No.17)

[2] - Bilateral Contracts Lending or Borrowing as per Methods 8-3-1 and 8-3-2 (According to ATHEX BoD Resolution No.20)

[3] - The information concerning OTC Stock Borrowing Transactions is based on the statements of the Dematerialised Securities System (DSS) operators involved and refers to volumes that have been registered up until the previous working day.

[4] - Average Price (Volume weighted)

[5] - The Data concerning Open Interest before the start of trading session

Lending Products	Underlying Title	Open Interest[5]	Multilateral Transactions[1]				Bilateral Transactions[2]		Stock Borrowing through OTC (volume)[3]
			Volume(Offered)	Average Weighted	Transactions volume	Average Weighted	Transactions Volume	Average Weighted	Transactions Volume
TENERGYBOR	TERNA ENERGY (CR)	750	---	---	---	---	---	---	24,592
TITCBOR	TITAN CEMENT (CB)	17,301	---	---	3,879	2.65%	---	---	211,032
VIOBOR	VIOHALCO SA/NV (CB)	400	---	---	---	---	---	---	---

Stock Lending Notes

[1] - Multilateral contracts Lending or Borrowing as per Methods 8-1, 8-2 and 8-3-3 (According to ATHEX BoD Resolution No.17)

[2] - Bilateral Contracts Lending or Borrowing as per Methods 8-3-1 and 8-3-2 (According to ATHEX BoD Resolution No.20)

[3] - The information concerning OTC Stock Borrowing Transactions is based on the statements of the Dematerialised Securities System (DSS) operators involved and refers to volumes that have been registered up until the previous working day.

[4] - Average Price (Volume weighted)

[5] - The Data concerning Open Interest before the start of trading session

Sectors codification for listed companies

12003 -	ETF	10101010	Computer Services
10101015	Software	10102030	Computer Hardware
15101010	Telecommunications Equipment	15102015	Telecommunications Services
20101010	Health Care Facilities	20101025	Health Care Services
20102010	Medical Equipment	20103015	Pharmaceuticals
30101010	Banks	30202000	Diversified Financial Services
30202010	Asset Managers & Custodians	30202015	Investment Services
30302010	Full Line Insurance	30302015	Insurance Brokers
35101010	Real Estate Holding and Development	35101015	Real Estate Services
35102000	Diversified REITs	35102030	Office REITs
40201040	Rental & Leasing Services: Consumer	40202010	Home Construction
40202015	Household Furnishings	40202020	Household Appliance
40203040	Electronic Entertainment	40203045	Toys
40204020	Clothing & Accessories	40301010	Entertainment
40301030	Publishing	40301035	Radio & TV Broadcasters
40401010	Diversified Retailers	40401020	Apparel Retailers
40401025	Home Improvement Retailers	40401030	Specialty Retailers
40501010	Airlines	40501015	Travel & Tourism
40501020	Casinos & Gambling	40501025	Hotels & Motels
45101015	Distillers & Vintners	45101020	Soft Drinks
45102010	Farming Fishing Ranching & Plantations	45102020	Food Products
45103010	Tobacco	45201010	Food Retailers & Wholesalers
45201020	Personal Products	50101010	Construction
50101030	Cement	50101035	Building Materials: Other
50202010	Electrical Components	50203000	Diversified Industrials
50203015	Plastics	50203030	Containers & Packaging
50204000	Machinery: Industrial	50204020	Machinery: Construction & Handling
50205010	Industrial Suppliers	50205020	Back Office Support HR & Consulting
50205030	Forms & Bulk Printing Services	50206015	Commercial Vehicles & Parts
50206030	Marine Transportation	50206060	Transportation Services
55101000	Diversified Materials	55101020	Textile Products
55102000	General Mining	55102010	Iron & Steel
55102015	Metal Fabricating	55102035	Aluminum
60101000	Integrated Oil & Gas	60101020	Oil Refining and Marketing
65101010	Alternative Electricity	65101015	Conventional Electricity
65102030	Water		



ATHEX
Athens Stock Exchange

Λεωφ. Αθηνών 110 104 42 Αθήνα
110, Athinon Ave. GR 104 42 Athens
tel. (+30)210-33.66.800, fax (+30)210-33.66.101
www.athexgroup.gr