

20

Ημερήσιο Δελτίο  
Συναλλακτικής Δραστηριότητας

Daily Official List  
of Trading Activity

Tuesday, 28 April, 2020

Year: 141 Trading Day No: 77



**ATHEXGROUP**  
Athens Exchange Group

**Disclaimer:**

Hellenic Exchanges-Athens Stock Exchange S.A endeavours to ensure that the data and other material ("Information") presented on the Daily Official List are accurate and complete, but it is not liable for any errors or omissions of data or /and for the accuracy, credibility, updating and completeness of the aforesaid information nor it has any liability arising directly or indirectly from the use of the above Information.

The Company is not liable for the accuracy of the data included in listed companies' announcements. Only the sender of such an announcement is fully and solely liable for any infringement of third party's rights from the content of such announcement. All contents of the Daily Official List are provided only for information purposes and do not constitute investment advice or solicitation to invest in securities or other products listed for trading on the Exchange.

You acknowledge and agree that the Company is the owner of any property rights related to any Information appearing on the Daily Official List including intellectual property rights copyright, trademarks, etc.

The above data are a property of the Hellenic Exchanges-Athens Exchange and are copyright protected. Users are forbidden to reproduce, modify, copy, sale, transmit or redistribute, by all reproduction means and methods, part or the whole of the above data, without reference to their source.

The commercial exploitation of these data is, also, forbidden by third parties. Hellenic Exchanges-Athens Exchange does not carry any responsibility, direct or indirect, derived from usage or accidental alteration of the above data when used by third parties.

---

**Hellenic Exchanges – Athens Stock Exchange S.A.**

110 Athinon Ave., 10442 Athens, Tel: (210) 33.66.800, Fax: (210) 32.13.938

[www.athexgroup.gr](http://www.athexgroup.gr)

---

**Thessalonica Stock Exchange Center (T.S.E.C)**

16-18 Katouni Str., Thessalonica 546 25 Tel: (2310) 567.667, Fax: (2310) 530.545

**Athex Members Guarantee Fund**

14-16 Fidiou Str., Athens 106 78, Tel: (210) 33.04.682, Fax: (210) 33.04.155

**Hellenic Republic Capital Market Commission**

1 Kolokotroni Str. & 1 Stadiou Str., Athens 10562 Tel: (210) 33.77.100 Fax: (210) 33.77.173

---

**Table of Contents**

---

**Section 1: Statistical Figures of Securities, Derivatives and Lending**

Summary of Markets

Athex Indices

Analytic Figures for Athex Market's Boards and Categories

Trading Details by Athex Sectors and Financial Instruments (ETFs)

Top 10 best &amp; worst performing Shares

Derivatives Summary

**Section 2: Analytic Figures of Shares Transactions**

Analytic Figures of Shares Transactions

Shares' Notes

**Section 3: Figures of Securities Transactions**

Securities Blocks Details

Shares Rights Details

Stock Borrowing

Securities Forced Sales

Forced Sales Registered Shares

Exchange Traded Funds (ETFs) Characteristics

**Section 5: Bonds traded in Fixed Income Assets Market**

Convertible Corporate Bonds - Regulated Market

Non Convertible Corporate Bonds - Regulated Market

Government Bonds

Treasury Bills &amp; Zero Coupon Government Bonds

Government Bonds Traded with the Open Outcry Method

State Banks Bonds

**Section 6: Additional Infos**

Athex &amp; ATHEXClear Members List

List of Stocks under Market Making operations

**Section 7: Derivatives Market Analytic Figures**

Index Futures

Stock Futures

Index Options

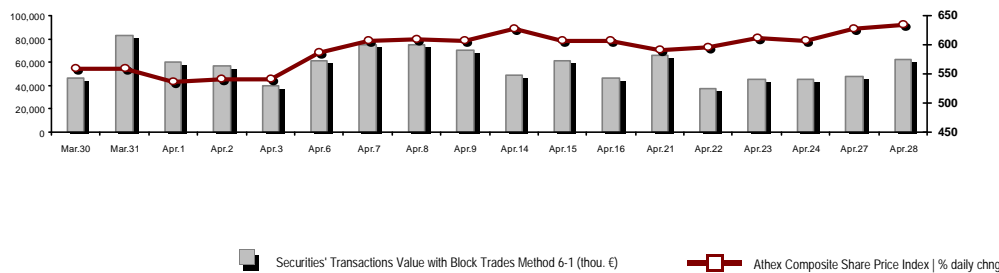
Stock Options

Stock Lending Analytic Figures

**Appendix A: Sectors codification for listed companies**

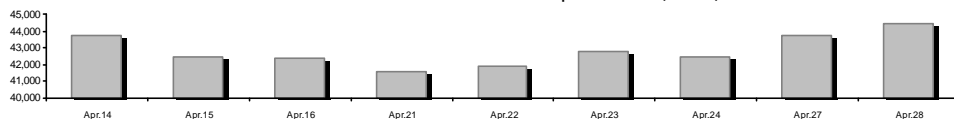
## Summary of Markets

Athex Composite Share Price Index vs Shares and Derivatives Transactions Value

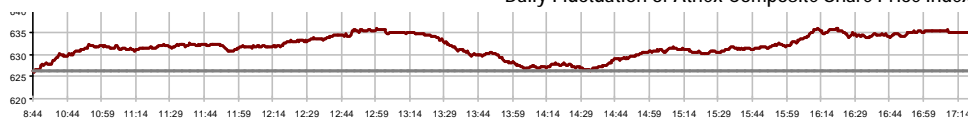


Athex Capitalisation (mill. €) **:	44,431.02		Derivatives Total Open Interest	203,658
Daily change: mill. €   %	704.23	1.61%	in Index Futures   % daily chng	3,837 -0.88%
Yearly Avg Capitalisation: mill. €   % chng prev year Avg	52,050.53	-4.99%	in Stock Futures   % daily chng	197,192 2.37%
Athex Composite Share Price Index   % daily chng	634.96	1.41%	in Index Options   % daily chng	1,376 13.06%
Athex Composite Share Price Index Capitalisation (mill. €)	39,313.76		in Stock Options   % daily chng	1,253 0.40%
Daily change (mill. €)	712.60			
Securities' Transactions Value with Block Trades Method 6-1 (t)	61,973.70		Derivatives Contracts Volume:	35,290
Daily change: %	14,598.10	30.81%	Daily change: pieces   %	15,321 76.72%
YTD Avg Trans. Value: thou. €   % chng prev year Avg	77,825.12	18.26%	YTD Avg Derivatives Contracts % chng prev year Avg	34,775 -16.99%
Blocks Transactions Value of Method 6-1 (thou. €)	5,148.12		Derivatives Trades Number:	2,769
Blocks Transactions Value of Method 6-2 & 6-3 (thou. €)	0.00		Daily change: number   %	867 45.58%
Bonds Transactions Value (thou.€)	536.92		YTD Avg Trades number % chng prev year Avg	2,948 3.46%
Securities' Transactions Volume with Block Trades Method 6-1 (th)	48,244.70		Lending Total Open Interest	263,432
Daily change: thou. pieces   %	14,102.39	41.30%	Daily change: pieces   %	-1,373 -0.52%
YTD Avg Volume: % chng prev year Avg	42,055.95	32.47%	Lending Volume (Multilateral/Bilateral)	12,605
Blocks Transactions Volume of Method 6-1 (thou. Pieces)	6,152.17		Daily change: pieces   %	10,005
Blocks Transactions Volume of Method 6-2 & 6-3 (thou. Pieces)	0.00		Multilateral Lending	0
Bonds Transactions Volume	562,000		Bilateral Lending	12,605
Securities' Trades Number with Block Trades Method 6-1	34,474		Lending Trades Number:	4
Daily change: number   %	5,219	17.84%	Daily change: %	2
YTD Avg Trades number % chng prev year Avg	36,870	35.81%	Multilateral Lending Trades Number	0
Number of Blocks Method 6-1	11		Bilateral Lending Trades Number	4
Number of Blocks Method 6-2 & 6-3	0			
Number of Bonds Transactions	80			

Athex Capitalisation (mill. €) \*\*



Daily Fluctuation of Athex Composite Share Price Index



Athex Composite Share Price Index at 27/04/2020

Daily Fluctuation of Athex Composite Share Price Index at 28/04/2020

## Athex Indices

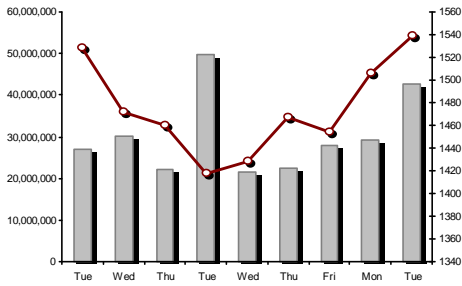
Index name	28/04/2020	27/04/2020	pts.	%	Min	Max	Year min	Year max	Year change
Athex Composite Share Price Index	634.96 #	626.16	8.80	1.41%	626.09	635.92	469.55	949.20	-30.73% €
FTSE/Athex Large Cap	1,539.34 #	1,505.53	33.81	2.25%	1,505.53	1,543.49	1,135.79	2,371.26	-33.01% €
FTSE/Athex Mid Cap Index	904.84 €	905.80	-0.96	-0.11%	892.23	911.49	659.09	1,298.86	-24.29% €
FTSE/ATHEX-CSE Banking Index	264.87 #	251.96	12.91	5.12%	251.96	265.40	201.47	673.55	-60.46% €
FTSE/ATHEX High Dividend Yield Index	2,279.77 #	2,257.87	21.90	0.97%	2,252.25	2,282.56	1,730.40	3,015.23	-22.49% €
FTSE/ATHEX Global Traders Index Plus	1,712.77 #	1,695.73	17.04	1.00%	1,695.42	1,722.11	1,269.53	2,435.50	-26.13% €
FTSE/ATHEX Global Traders Index	1,919.05 #	1,900.07	18.98	1.00%	1,896.97	1,923.41	1,458.31	2,560.38	-22.70% €
FTSE/ATHEX Mid & Small Cap Factor-Weighted Ind	2,484.76 €	2,514.18	-29.42	-1.17%	2,482.26	2,525.11	2,028.59	3,205.70	-16.50% €
ATHEX Select Index Plus	2,266.54 €	2,271.64	-5.10	-0.22%	2,244.00	2,303.28	1,698.34	3,182.42	-24.39% €
ATHEX Select Index	2,498.86 €	2,501.42	-2.56	-0.10%	2,477.53	2,530.09	1,734.15	3,581.16	-23.65% €
ATHEX Mid & SmallCap Price Index	5,069.84 #	5,069.62	0.22	0.00%	5,042.24	5,089.61	3,964.16	6,324.97	-14.61% €
FTSE/Athex Market Index	382.87 #	374.81	8.06	2.15%	374.81	383.85	282.92	587.56	-32.69% €
FTSE Med Index	4,090.13 #	3,936.97	153.16	3.89%			3,062.99	5,342.28	-17.85% €
Athex Composite Index Total Return Index	1,042.36 #	1,027.92	14.44	1.40%	1,027.81	1,043.93	770.25	1,557.05	-30.30% €
FTSE/Athex Large Cap Total Return	2,304.78 #	2,254.16	50.62	2.25%			1,760.89	3,542.27	-32.48% €
FTSE/ATHEX Large Cap Net Total Return	704.05 #	688.59	15.46	2.25%	688.59	705.95	519.48	1,084.55	-32.51% €
FTSE/Athex Mid Cap Total Return	1,104.72 €	1,105.89	-1.17	-0.11%			818.92	1,582.98	-24.17% €
FTSE/ATHEX High Dividend Yield Index Total Retur	2,279.77 #	2,257.87	21.90	0.97%			1,730.41	3,015.16	-21.52% €
FTSE/ATHEX-CSE Banking Total Return Index	231.93 #	220.63	11.30	5.12%			178.09	588.56	-60.47% €
Hellenic Mid & Small Cap Index	954.49 #	948.64	5.85	0.62%	943.90	957.82	701.19	1,312.90	-23.85% €
FTSE/Athex Banks	349.95 #	332.90	17.05	5.12%	332.90	350.66	266.18	889.92	-60.46% €
FTSE/Athex Insurance	1,642.34 #	1,594.50	47.84	3.00%	1,594.50	1,642.34	1,076.29	2,088.80	-18.90% €
FTSE/Athex Financial Services	760.93 #	746.39	14.54	1.95%	741.10	760.93	548.44	1,123.81	-23.67% €
FTSE/Athex Industrial Goods & Services	1,849.87 #	1,834.50	15.37	0.84%	1,823.77	1,866.68	1,302.84	2,712.84	-27.78% €
FTSE/Athex Retail	47.77 #	47.25	0.52	1.10%	47.25	48.12	38.18	75.77	-31.40% €
FTSE/ATHEX Real Estate	4,119.10 €	4,197.83	-78.73	-1.88%	4,083.83	4,273.60	2,945.19	5,826.74	-24.63% €
FTSE/Athex Personal & Household Goods	7,524.40 #	7,368.94	155.46	2.11%	7,368.66	7,555.89	5,596.91	10,280.00	-23.30% €
FTSE/Athex Food & Beverage	8,901.91 #	8,600.56	301.35	3.50%	8,567.38	9,075.90	5,768.28	13,004.12	-20.97% €
FTSE/Athex Basic Resources	4,596.89 #	4,575.33	21.56	0.47%	4,547.28	4,625.47	2,713.19	7,435.44	-28.82% €
FTSE/Athex Construction & Materials	2,192.65 €	2,200.18	-7.53	-0.34%	2,171.34	2,236.22	1,403.78	3,344.96	-28.88% €
FTSE/Athex Oil & Gas	3,450.08 #	3,374.49	75.59	2.24%	3,352.28	3,479.99	2,268.39	5,154.35	-31.66% €
FTSE/Athex Chemicals	7,939.48 €	8,139.60	-200.12	-2.46%	7,922.78	8,353.90	5,513.26	9,442.19	-10.44% €
FTSE/Athex Travel & Leisure	1,329.24 #	1,311.89	17.35	1.32%	1,277.02	1,329.98	904.20	2,084.49	-31.47% €
FTSE/Athex Technology	776.77 #	772.96	3.81	0.49%	755.16	782.99	537.98	1,029.21	-13.73% €
FTSE/Athex Telecommunications	3,259.04 #	3,220.51	38.53	1.20%	3,187.48	3,261.80	2,480.07	3,960.95	-16.97% €
FTSE/Athex Utilities	2,740.24 €	2,760.09	-19.85	-0.72%	2,713.10	2,781.01	1,865.80	3,447.76	-13.98% €
FTSE/Athex Health Care	459.10 ~	459.10	0.00	0.00%	459.10	459.10	402.35	508.96	-9.06% €
Athex All Share Index	156.25 #	153.75	2.50	1.63%	156.25	156.25	122.81	223.49	-27.55% €
Hellenic Corporate Bond Index	110.98 #	110.78	0.19	0.17%			106.56	121.22	-7.73% €
Hellenic Corporate Bond Price Index	87.31 #	87.18	0.13	0.15%			84.04	96.15	-8.78% €

Note 1: FTSE/Med 100, Hellenic Corporate Bond Price Index and Hellenic Corporate Bond Index closing prices refer to the previous trading day of 24/04/2020.

Note 2: The Hellenic Mid & Small Cap Index is a Customized index calculated by the Athens Exchange.

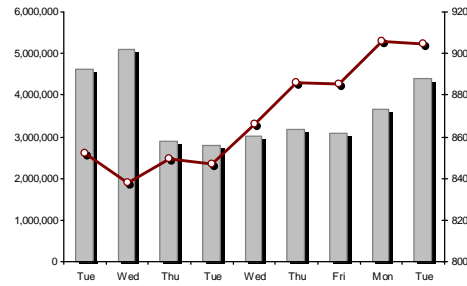
Athex Indices

FTSE/Large Cap

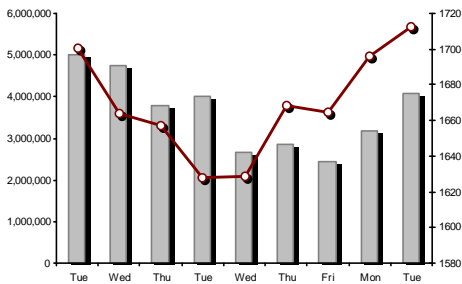


28/04/2020: 2.25% FTSE/Athex Mid Cap Index

28/04/2020: -0.11%

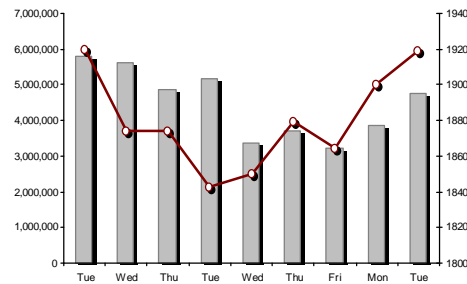


FTSE/ATHEX Global Traders Index Plus



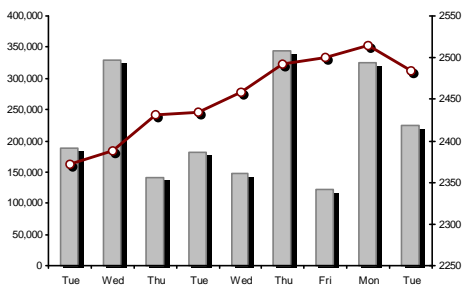
28/04/2020: 1.00% FTSE/ATHEX Global Traders Index

28/04/2020: 1.00%



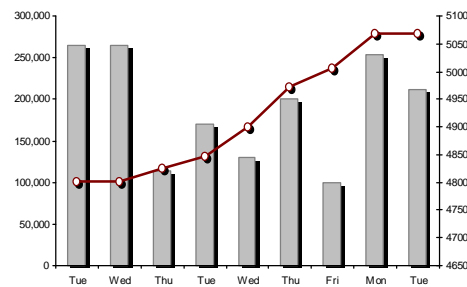
FTSE/ATHEX Mid & Small Cap Factor-Weighted Index

28/04/2020: -1.17%



ATHEX Mid & SmallCap Price Index

28/04/2020: 0.00%



Indices volume of transactions

Indices closing prices

## Analytic Figures for Athex Market's Boards and Categories

	Total Traded Securities	Main Market	Surveillance	Exchange Traded Funds (ETFs)
Totals	125	109	15	1
Gain / Lose / Same:	54 / 50 / 21	49 / 46 / 14	4 / 4 / 7	1 / 0 / 0
Athex Capitalisation (mill. €) **	44,431.02	44,162.27	268.75	
Daily Average Trans/ons Value(thou.€)	77,825.12	77,728.63	106.96	83.98
Transactions Value	61,973.70	61,901.60	24.86	47.24
Main Board:	56,825.58	56,753.48	24.86	47.24
Blocks Board 6_2_3:	5,148.12	5,148.12	0.00	0.00
Forced Sales Board:	0.00	0.00	0.00	0.00
Special Terms Board:	0.00	0.00	0.00	0.00
Daily Average Transactions Volume	42,055,945	41,419,761	655,694	4,299
Transactions Volume	48,244,695	48,012,765	228,925	3,005
Main Board:	42,092,524	41,860,594	228,925	3,005
Blocks Board 6_2_3:	6,152,171	6,152,171	0	0
Forced Sales Board:	0	0	0	0
Special Terms Board:	0	0	0	0
Daily Average Number of Trades	36,870	36,706	160	5
Number of Trades	34,474	34,353	119	2
Main Board:	34,463	34,342	119	2
Blocks Board 6_2_3:	11	11	0	0
Forced Sales Board:	0	0	0	0
Special Terms Board:	0	0	0	0

## Trading Details by Athex Sectors and Financial Instruments (ETFs)

Code	Sectors	Gain / Lose / Same	Number of Trades	Transactions Volume	Transactions Value	% of Total Trans. Value
3010	- Banks	5 / 1 / 0	12,003	36,447,186	24,289,731.11	39.19%
5510	- Basic Resources	7 / 7 / 0	1,001	476,298	820,427.89	1.32%
5010	- Construction & Materials	1 / 7 / 4	3,435	2,755,895	5,107,058.22	8.24%
4020	- Consumer Products & Services	2 / 4 / 2	2,066	475,612	3,464,907.35	5.59%
6010	- Energy	2 / 0 / 0	1,091	179,431	1,894,168.01	3.06%
12000	- Financial Instruments	1 / 0 / 0	2	3,005	47,238.50	0.08%
3020	- Financial Services	3 / 0 / 1	729	2,475,797	526,045.82	0.85%
4510	- Food Beverage & Tobacco	2 / 3 / 5	544	149,374	2,083,736.14	3.36%
2010	- Health Care	1 / 2 / 1	41	18,307	9,275.72	0.01%
5020	- Industrial Goods & Service	9 / 9 / 2	2,298	899,052	2,855,540.10	4.61%
3030	- Insurance	1 / 0 / 0	53	9,664	39,198.90	0.06%
4030	- Media	1 / 1 / 0	5	1,380	404.73	0.00%
4520	- Personal Care, Drug & Grocery Stores	1 / 2 / 0	176	39,898	247,595.16	0.40%
3510	- Real Estate	2 / 2 / 4	792	192,633	1,000,003.79	1.61%
4040	- Retail	4 / 0 / 1	603	142,004	477,614.53	0.77%
1010	- Technology	5 / 3 / 1	728	250,909	459,122.27	0.74%
1510	- Telecommunications	1 / 4 / 0	2,845	725,654	7,069,215.48	11.41%
4050	- Travel & Leisure	5 / 1 / 0	2,693	1,445,295	7,286,418.12	11.76%
6510	- Utilities	1 / 4 / 0	3,369	1,557,301	4,295,999.53	6.93%

## Top 10 best &amp; worst performing Shares

## Main Market

With positive Price change			With negative Price change		
	Closing price	change		Closing price	change
INTERWOOD-XYLEMPORIA (CR)	0.141	9.30% #	ELTON SA (CR)	1.36	-3.55% €
MLS MULTIMEDIA SA (CR)	0.748	7.16% #	AVAX S.A. (CR)	0.4635	-3.24% €
AEGEAN AIRLINES (CR)	5.6	6.67% #	GEK TERNA (CR)	6.01	-3.22% €
NATIONAL BANK (CR)	1.29	6.66% #	INTRACOM HOLDINGS (CR)	0.526	-2.41% €
EUROBANK HOLDINGS (CR)	0.3751	5.36% #	PAPOUTSANIS (CR)	1.7	-2.30% €
ALPHA BANK (CR)	0.682	5.25% #	BANK OF GREECE (CR)	12.94	-2.27% €
ALUMIL (CR)	0.91	3.64% #	LAMDA DEVELOPMENT SA (CR)	6.11	-2.24% €
CC HBC AG (CR)	23.82	3.56% #	EKTER SA (CR)	0.87	-2.14% €
MOTOR OIL (CR)	13.9	3.27% #	AUTOHELLAS SA (CR)	4.7	-2.08% €
INTRALOT (CR)	0.1498	3.03% #	THRACE PLASTICS SA (CR)	1.88	-2.08% €
With the highest Transactions Value			With the highest Transactions Volume		
	Value (thou. €)	change		Volume	change
ALPHA BANK (CR)	11,448.42	5.25% #	ALPHA BANK (CR)	17,124,715	5.25% #
OTE (CR)	6,990.24	1.20% #	EUROBANK HOLDINGS (CR)	12,466,693	5.36% #
OPAP (CR)	6,716.62	1.00% #	NATIONAL BANK (CR)	5,024,191	6.66% #
NATIONAL BANK (CR)	6,306.56	6.66% #	MARFIN INVESTMENT GROUP (CR)	2,374,966	2.87% #
EUROBANK HOLDINGS (CR)	4,570.80	5.36% #	ELLAKTOR (CR)	1,912,644	-0.11% €
JUMBO SA (CR)	2,636.93	2.69% #	PIRAEUS BANK (CR)	1,329,385	1.46% #
PPC (CR)	2,571.26	-1.48% €	PPC (CR)	965,464	-1.48% €
MYTILINEOS (CR)	2,126.51	0.57% #	OPAP (CR)	844,208	1.00% #
CC HBC AG (CR)	1,968.97	3.56% #	OTE (CR)	594,731	1.20% #
ELLAKTOR (CR)	1,773.22	-0.11% €	ADMIE (IPTO) HOLDING S.A. (CR)	498,161	1.66% #

Note: Stocks that are not included in the "Low Dispersion" and "Under Supervision" categories, and the transactions value is more than 10,000 €.



## Derivatives Summary

	Number of Trades	Volume	Open Interest
Index Futures	297	1,129	3,837
FTSE/Athex Large Cap	297	1,129	3,837
Stock Futures	2,450	34,007	197,192
ADMIE (IPTO) HOLDING S.A. (CR)	71	377	2,965
ALPHA BANK (CR)	356	5,541	27,630
ATTICA BANK S.A. (CR)	1	10	474
CC HBC AG (CR)	28	135	254
CENERGY HOLDINGS (CB)	30	116	2,436
ELLAKTOR (CR)	259	4,724	10,624
EUROBANK HOLDINGS (CR)	367	10,439	46,931
EYDAP S.A. (CR)	1	2	119
FOURLIS (CR)	35	184	571
GEK TERNA (CR)	96	256	2,618
HELLENIC EXCHANGES-A.S.E. (CR)	28	77	1,457
HELLENIC PETROLEUM (CR)	4	12	1,348
INTRACOM HOLDINGS (CR)	8	113	1,707
INTRALOT (CR)	11	99	1,138
JUMBO SA (CR)	66	150	479
LAMDA DEVELOPMENT SA (CR)	67	127	881
MARFIN INVESTMENT GROUP (CR)	50	1,135	42,106
MOTOR OIL (CR)	6	20	137
MYTILINEOS (CR)	90	356	4,043
NATIONAL BANK (CR)	324	6,103	23,144
OPAP (CR)	127	540	1,865
OTE (CR)	28	82	1,822
P.P.A. S.A. (CR)	4	18	161
PIRAEUS BANK (CR)	111	1,601	8,436
PPC (CR)	144	1,253	7,634
TERNA ENERGY (CR)	7	22	3,156
TITAN CEMENT (CB)	65	230	522
VIOHALCO SA/NV (CB)	66	285	2,534
Index Options	14	109	1,376
FTSE/Athex Large Cap	14	109	1,376
Stock Options	8	45	1,253
ALPHA BANK (CR)	0	0	154
NATIONAL BANK (CR)	1	4	494
OPAP (CR)	5	31	305
OTE (CR)	2	10	77
PIRAEUS BANK (CR)	0	0	210
PPC (CR)	0	0	13
<b>Total Derivatives Traded</b>	<b>2,769</b>	<b>35,290</b>	<b>203,658</b>



## Daily Official List

Year: 141 Trading Day No: 77

## Section 2: Analytic Figures of Shares Transactions

Tuesday, 28 April, 2020

Number of Outstanding Securities	Nominal Value	Dividends [1]			Date of Last Coupon		Note	Shares	Closing price	% change	Previous closing price/date	Open price	Price min	Price max	Last price	Avg price	Last Bid [7]	Last Ask [7]	P/E after tax	Year	Volume	Trades	Transactions Value[8]	Company Mkt Value (thou. €)	Year low	Year high	Sector[4]	
		2017	2018	2019	Dividend [2]	Right																						
784,500	10.00	---	0.13	0.2	10/10/2019	31/07/2018	---	CNL CAPITAL (CR)	8.7	1.75 #	8.55	27/04/2020	8.5	8.5	8.75	8.75	8.543	100@8.20	100@8.75	10.72	2019	1,155	10	9,867.50	6,825.15	7.5	10.5	30202000
9,907,500	0.300	---	---	---	06/10/2005	13/02/2002	---	CPI SA (CR)	0.48	-3.61 €	0.498	27/04/2020	0.48	0.48	0.48	0.48	0.48	2500@0.400	3590@0.480	---	2018	600	2	288.00	4,755.60	0.328	0.6	10102030
11,720,024	0.540	---	---	---	21/08/2014	30/08/2019	---	FLEXOPACK SA (CR)	6.9	---	6.9	27/04/2020	---	---	---	---	360@6.65	1242@6.90	---	---	---	---	---	---	80,868.17	5.4	8.3	50203030
20,578,374	0.620	0.1	---	---	08/06/2018	18/05/2015	---	INFORM P. LYKOS (CR)	1.065	1.43 #	1.05	27/04/2020	1.045	1.02	1.065	1.065	1.035	100@1.05	150@1.07	---	---	4,480	18	4,635.07	21,915.97	0.66	1.7	50205030
10,500,000	4.00	0.31	0.36	---	07/05/2019	02/08/2016	---	INTERCONTINENTAL (CR)	6.55	0.77 #	6.5	27/04/2020	6.45	6.45	6.55	6.55	6.506	200@6.20	240@6.55	---	---	18	2	117.10	68,775.00	5.9	8.35	35102000
76,000,000	1.00	---	---	---	03/07/2007	17/09/2018	---	INTRACOM HOLDINGS (CR)	0.526	-2.41 €	0.539	27/04/2020	0.53	0.515	0.547	0.526	0.533	400@0.525	3700@0.527	---	---	125,126	170	66,644.05	39,976.00	0.28	0.915	15101010
30,477,156	0.300	---	---	---	12/08/2008	17/10/2017	---	INTRACOM CONSTR. (CR)	1.07	-0.93 €	1.08	27/04/2020	1.015	1.015	1.1	1.07	1.066	50@1.05	1490@1.07	---	---	16,177	49	17,249.18	32,610.56	0.58	1.8	50101010
4,740,000	0.860	---	---	---	14/03/2003	---	---	LOGISMOS S.A. (CR)	0.765	---	0.765	27/04/2020	---	---	---	---	250@0.550	3400@0.695	96.13	2018	---	---	---	---	3,626.10	0.46	0.88	10101015
4,419,616	1.58	---	---	---	21/07/2011	04/03/2015	---	MEDICON S.A (CR)	2.16	1.89 #	2.12	27/04/2020	2.12	2.04	2.16	2.16	2.074	312@2.04	639@2.16	---	---	1,102	10	2,285.90	9,546.37	1.5	2.98	20102010
468,700	0.73	4.869	---	---	25/04/2019	21/05/2004	---	MERMEREN KOMB. A.D. PR. (GDR)	50.2	-0.40 €	50.4	27/04/2020	52.8	50.2	54.6	50.2	51.915	11@50.20	20@51.80	1.17	2019	89	13	4,620.40	23,528.74	40	67.8	55102000
10,500,000	0.950	---	---	---	24/06/2008	30/06/2017	---	MEVACO SA (CR)	1.5	4.90 #	1.43	27/04/2020	1.42	1.42	1.5	1.5	1.445	82@1.42	370@1.50	---	2018	1,853	12	2,677.46	15,750.00	1.24	1.87	55102015
12,417,000	0.310	---	0.0205	---	27/08/2019	28/08/2017	---	MLS MULTIMEDIA SA (CR)	0.748	7.16 #	0.698	27/04/2020	0.705	0.704	0.758	0.748	0.735	500@0.735	999@0.750	5.80	2018	110,375	215	81,176.41	9,287.92	0.475	1.51	10101015
3,953,090	0.300	0.16	0.15	---	06/06/2019	05/12/2012	---	PAPERPACK (CR)	5.35	2.89 #	5.2	27/04/2020	5.35	5.3	5.35	5.3	5.345	100@5.30	100@5.50	10.82	2019	257	2	1,373.60	21,149.03	3.98	6	50203030
11,812,193	0.470	---	---	---	29/05/2018	07/04/2020	---	PROFILE SA (CR)	3.4	-0.88 €	3.43	27/04/2020	3.45	3.4	3.5	3.4	3.469	249@3.40	500@3.49	---	---	12,130	61	42,077.89	40,161.46	2.12	4.34	10101010
27,345,120	0.280	---	---	---	18/07/2005	26/02/2014	---	QUALITY & RELIABILITY SA (CR)	0.257	---	0.257	27/04/2020	0.27	0.243	0.27	0.257	0.253	350@0.244	472@0.257	---	---	45,929	99	11,614.23	7,027.70	0.17	0.276	10101010
35,740,896	0.040	---	---	---	05/09/2008	25/11/2019	---	QUEST HOLDINGS (CR)	7.86	2.08 #	7.7	27/04/2020	7.7	7.34	7.92	7.86	7.728	27@7.60	975@7.86	---	---	36,289	200	280,423.48	280,923.44	5.6	9.76	10101010
57,434,884	1.31	---	---	---	05/06/2008	12/06/2009	---	REDS S.A. (CR)	0.97	---	0.97	27/04/2020	0.99	0.96	1	0.97	0.975	1790@0.960	1140@0.970	---	---	17,886	55	17,441.30	55,711.84	0.752	1.47	35101010
6,456,530	1.08	---	---	---	04/07/2019	02/08/2010	---	SPACE HELLAS SA (CR)	4.42	-1.56 €	4.49	27/04/2020	4.7	4.3	4.77	4.42	4.394	900@4.30	3@4.41	---	---	2,552	26	11,212.52	28,537.86	3.02	5.88	15101010
15,627,315	0.300	---	---	---	16/11/1992	24/07/2019	---	UNIBIOS (CR)	0.273	-1.44 €	0.277	27/04/2020	0.272	0.269	0.278	0.273	0.272	1500@0.269	252@0.278	---	---	24,214	45	6,580.14	4,266.26	0.186	0.463	50204000
22,016,250	0.370	---	---	---	15/07/2009	11/05/2000	---	ALUMIL (CR)	0.91	3.64 #	0.878	27/04/2020	0.888	0.868	0.91	0.91	0.894	100@0.908	1581@0.910	---	---	38,008	111	33,966.15	20,034.79	0.431	1.62	55102035
401,136	14.50	0.75	---	---	05/04/2018	31/12/2019	---	ANDROMEDA SA (CR)	20	---	20	27/04/2020	20	20	20	20	20	100@19.80	100@20.20	3.37	2019	100	1	2,000.00	8,022.72	19.9	27	30202010
18,810,000	0.400	---	---	---	08/07/2010	14/11/2007	---	VARVERIS - MODA BAGNO SA (CR)	0.38	---	0.38	27/04/2020	---	---	---	---	1000@0.294	887@0.384	---	---	---	---	---	---	7,147.80	0.21	0.64	40401025
23,986,500	1.05	---	---	---	26/06/2009	15/03/2000	---	BIOKARPET S.A.(CR)	0.75	---	0.75	27/04/2020	0.75	0.75	0.75	0.75	0.75	1600@0.615	2123@0.750	---	---	97	2	72.75	17,989.88	0.482	1.4	50101035
4,968,600	2.88	---	---	---	01/07/1998	14/12/1998	---	VIS SA (CR)	0.85	1.19 #	0.84	27/04/2020	0.85	0.85	0.85	0.85	0.85	100@0.700	544@1.08	---	2018	1,500	3	1,275.00	4,223.31	0.62	0.97	50203030
6,325,000	0.600	0.15	0.103	---	04/07/2019	17/02/2014	---	VOGIATZOGLOU SYSTEMS SA (CR)	1.92	-3.03 €	1.98	27/04/2020	1.7	1.7	1.92	1.92	1.905	600@1.71	797@1.92	---	---	43	3	81.90	12,144.00	1.4	2.44	50205010
24,060,000	0.300	0.01	0.015	---	01/07/2019	01/07/2019	---	GEN. COMMERCIAL & IND.SA (CR)	0.76	---	0.76	27/04/2020	---	---	---	---	400@0.745	1300@0.760	16.42	2019	---	---	---	---	18,285.60	0.54	1.13	50205010
34,720,000	0.310	---	---	---	16/06/2010	01/08/2007	---	DROMEAS SA (CR)	0.327	---	0.327	27/04/2020	0.32	0.32	0.329	0.327	0.32	900@0.320	2230@0.327	---	---	33,105	21	10,597.98	11,353.44	0.25	0.485	40202015
13,673,200	0.880	---	---	---	18/07/2008	26/07/2001	---	EVROFARMA SA (CR)	0.98	-2.00 €	1	27/04/2020	1.02	0.962	1.02	0.98	0.975	3440@0.970	85@0.980	---	---	5,250	33	5,116.23	13,399.74	0.61	1.375	45102020
27,848,000	0.300	0.0034	---	---	20/08/2018	02/09/2003	---	NEWSPHONE HELLAS SA (CR)	0.306	-1.92 €	0.312	27/04/2020	0.316	0.3	0.316	0.306	0.301	500@0.296	495@0.316	---	---	405	6	121.81	8,521.49	0.199	0.53	15102015
11,250,000	0.520	---	0.04	---	22/07/2019	09/11/2015	---	EKTER SA (CR)	0.87	-2.14 €	0.889	27/04/2020	0.88	0.86	0.888	0.87	0.872	80@0.869	14224@0.870	---	---	29,007	91	25,288.07	9,787.50	0.54	1.33	50101010
18,410,839	1.00	---	---	---	07/07/2009	10/09/2010	---	ELASTRON (CR)	0.97	-0.82 €	0.978	27/04/2020	0.97	0.97	0.976	0.97	0.972	1200@0.954	50@0.960	---	---	1,130	11	1,098.50	17,858.51	0.6	1.58	55102010
375,241,586	0.390	---	0.03	---	28/05/2019	14/07/2006	---	ELVALHALCOR (CR)	1.23	-0.49 €	1.236	27/04/2020	1.242	1.21	1.25	1.23	1.23	60@1.22	450@1.24	---	---	67,287	120	82,768.55	461,547.15	0.83	1.836	55102015
31,734,530	1.60	---	---	---	09/07/2007	19/07/2006	---	ELGEKA SA (CR)	0.335	-0.89 €	0.338	27/04/2020	0.34	0.316	0.34	0.335	0.331	1000@0.318	1080@0.335	---	---	1,768	5	585.28	10,631.07	0.214	0.565	45201010
19,864,886	5.60	0.672	0.672	0.672	26/03/2020	02/07/2008	---	BANK OF GREECE (CR)	12.94	-2.27 €	13.24	27/04/2020	13.28	12.92	13.36	12.94	13.073	200@12.92	200@12.98	---	---	13,605	127	177,857.70	257,051.62	11.9	16.68	30101010
26,730,187	0.520	0.04	0.06	---	09/07/2019	01/08/2017	---	ELTON SA (CR)	1.36	-3.55 €	1.41	27/04/2020	1.41	1.34	1.43	1.36	1.374	1050@1.35	200@1.38	---	---	29,782	133	40,912.51	36,353.05	1.02	1.85	50205010
5,000,000	0.300	0.13	0.18	---	28/06/2019	09/11/2016	---	ENTERSOFT (CR)	6.85	4.58 #	6.55	27/04/2020	6.8	6.8	6.85	6.85	6.83	20@6.65	112@6.90	---	---	500	2	3,415.00	34,250.00	5.4	7.65	10101015
36,300,000	1.12	0.221	0.126	---	27/06/2019	12/12/2007	---	THESSALONIKA WATER & SEWERAGE	3.91	-0.51 €	3.93	27/04/2020	3.95	3.85	3.96	3.91	3.867	10032@3.85	2748@3.91	---	---	17,857	114	69,059.35	141,933.00	3.06	5	65102030
27,503,677	0.630	0.12	0.13	---	29/05/2019	18/10/1999	---	EUROPEAN RELIANCE INSUR. (CR)	4.12	3.00 #	4	27/04/2020	4.04	4.02	4.12	4.12	4.056	420@4.00	50@4.11	---	---	9,664	53	39,198.90	113,315.15	2.7	5.24	30302010
122,156,754	0.440	---	---	---	25/11/2019	28/03/2018	---	IASO SA (CR)	1.335	---	1.335	27/04/2020	1.335	1.335	1.335	1.335	1.335	205@1.34	3538@1.35	---	---	500	4	667.50	163,079.27	1.17	1.48	20101010



Daily Official List

Year: 141 Trading Day No: 77

Section 2: Analytic Figures of Shares Transactions

Tuesday, 28 April, 2020

Number of Outstanding Securities	Nominal Value	Dividends [1]			Date of Last Coupon		Note	Shares	Closing price	% change	Previous closing price/date	Open price	Price min	Price max	Last price	Avg price	Last Bid [7]	Last Ask [7]	P/E after tax	Year	Volume	Trades	Transactions Value[8]	Company Mkt Value (thou. €)	Year low	Year high	Sector[4]	
2017	2018	2019	Dividend [2]	Right																								
8,418,750	0.300	0.28	0.32	---	12/06/2019	27/06/2012	---	GEKE (CR)	3.86	---	3.86	27/04/2020	---	---	---	---	300@3.70	124@4.24	10.71	2018	---	---	---	32,496.38	3.6	5.7	40501025	
15,000,000	0.300	---	---	---	06/07/2007	18/07/2000	---	DAIOS PLASTICS SA (CR)	2.9	---	2.9	27/04/2020	---	---	---	---	27@2.90	200@3.04	---	---	---	---	---	43,500.00	2.62	3.28	50203015	
3,307,500	0.210	---	---	---	11/08/2010	04/12/2019	---	ELVE SA (CR)	3.6	---	3.6	27/04/2020	---	---	---	---	4@3.38	37@3.60	---	---	---	---	---	11,907.00	2.94	4.5	40204020	
23,828,130	0.500	0.06	0.05	---	22/07/2019	17/02/2009	---	ELINOIL S.A. (CR)	1.54	---	1.54	27/04/2020	---	---	---	---	800@1.45	400@1.66	---	---	---	---	---	36,695.32	1.35	1.9	60101020	
86,735,980	0.310	---	---	---	06/07/2009	02/01/2002	---	ATHENS MEDICAL CENTER SA (CR)	1.66	-1.78	1.69	27/04/2020	1.675	1.6	1.68	1.66	130@1.65	90@1.66	---	---	1,615	16	2,700.22	143,981.73	1.09	2.35	20101025	
2,566,836	0.440	---	---	---	13/08/2010	09/01/2007	---	INTERWOOD-XYLEMPORIA (PR)	0.348	---	0.348	27/04/2020	---	---	---	---	---	2374@0.346	---	---	---	---	---	5,826.35	0.346	0.382	50205010	
34,986,430	0.440	---	---	---	25/07/2008	23/02/2010	---	INTERWOOD-XYLEMPORIA (CR)	0.141	9.30	0.129	27/04/2020	0.127	0.125	0.141	0.141	0.13815100@0.141	---	---	---	162,247	20	22,445.87	5,826.35	0.125	0.187	50205010	
9,742,920	0.400	---	---	---	12/08/2016	14/07/2000	---	KARAMOLEGOS SA (CR)	1.46	---	1.46	27/04/2020	---	---	---	---	600@1.31	200@1.52	---	---	---	---	---	14,224.66	1.24	2.14	45102020	
2,760,000	11.83	9.2	9.5	---	01/07/2019	16/07/1990	---	KARELIA (CR)	260	---	260	27/04/2020	260	260	260	260	47@250.00	6@266.00	---	---	21	3	5,460.00	717,600.00	228	302	45103010	
18,017,472	0.360	---	---	---	15/06/2010	28/08/2017	---	KTIMA KOSTAS LAZARIDIS SA (CR)	1.11	-9.76	1.23	27/04/2020	1.11	1.11	1.12	1.11	1.11	---	330@1.11	---	---	5,770	11	6,405.70	19,999.39	0.91	1.55	45101015
21,364,000	1.12	0.2	0.2	---	29/07/2019	10/08/2005	---	LAMPASA HOTEL SA (CR)	20	---	20	27/04/2020	---	---	---	---	200@19.90	1@20.00	---	---	---	---	---	427,280.00	17.5	20.6	40501025	
5,939,268	0.620	---	---	---	10/07/2003	03/01/2002	---	LANAKAM SA (CR)	1.14	---	1.14	27/04/2020	---	---	---	---	---	900@1.11	---	2018	---	---	---	6,770.77	0.95	1.3	40401020	
6,340,000	0.600	---	0.05	0.06	14/02/2020	02/12/2019	---	NAKAS MUSIC	1.69	---	1.69	27/04/2020	1.54	1.54	1.55	1.55	1.545 40@1.65	50@1.65	---	---	20	2	30.90	10,714.60	0.93	2.66	40401030	
27,379,200	0.300	0.148	0.294	---	16/08/2019	24/08/2018	---	CRETE PLASTICS SA (CR)	11.6	-2.93	11.95	27/04/2020	11.6	11.6	11.6	11.6	11.6 68@11.50	933@11.75	---	---	718	8	8,328.80	317,598.72	8.55	14.9	50203015	
255,494,534	3.00	0.22	0.286	0.613	16/04/2020	23/12/2015	---	PRODEA (CR)	8	---	8	27/04/2020	7.9	7.9	7.9	7.9	300@7.50	9@7.90	---	---	1	1	7.90	2,043,956.27	6.05	8.35	35102000	
4,181,450	0.500	---	---	---	21/08/2000	05/03/2002	---	FLOUR MILLS SARANTOPOULOS SA	1.5	---	1.5	27/04/2020	---	---	---	---	---	200@1.50	---	---	---	---	---	6,272.18	1.19	3.3	45102020	

Exchange Traded Funds (ETFs)

812,382	---	---	---	---	15/06/2016	---	ALPHA ETF FTSE Athex Large Cap	15.72	0.77	#	15.6	27/04/2020	15.7	15.7	15.72	15.72	15.72	15@15.70	---	---	---	3,005	2	47,238.50	---	11.3	24.5	12003
---------	-----	-----	-----	-----	------------	-----	--------------------------------	-------	------	---	------	------------	------	------	-------	-------	-------	----------	-----	-----	-----	-------	---	-----------	-----	------	------	-------

Surveillance

5,867,311	0.300	---	---	---	11/08/2010	28/04/2017	5123	DIONIC (CR)	0.12	---	0.12	27/04/2020	---	---	---	---	2578@0.096	222@0.144	---	---	---	---	---	704.08	0.1	0.244	50205010	
172,599,567	0.300	---	---	---	---	19/09/2016	5161	Forthnet (CR)	0.35	-2.24	0.358	27/04/2020	0.35	0.35	0.35	0.35	0.35 1000@0.330	1140@0.348	---	---	2,840	7	994.00	60,409.85	0.186	0.448	15102015	
355,437,751	0.100	---	---	---	07/07/2010	21/09/2017	5160	FRIGOGLASS SA (CR)	0.141	-4.73	0.148	27/04/2020	0.145	0.141	0.145	0.141	0.14311610@0.141	7500@0.142	---	---	77,373	32	11,057.21	50,116.72	0.09	0.28	50204000	
51,081,030	1.00	---	---	---	20/08/2007	03/09/2007	4912	LAVIPHARM SA (CR)	0.24	-4.00	0.25	27/04/2020	0.25	0.24	0.25	0.24	0.24 1000@0.238	20910@0.240	---	---	15,090	11	3,622.10	12,259.45	0.208	0.338	20103015	
1,870,992	0.500	---	---	---	21/05/2008	27/03/2020	5231	PASAL DEVELOPMENT S.A. (CR)	0.8	---	0.8	27/04/2020	0.8	0.8	0.8	0.8	0.8 437@0.800	300@0.840	---	---	673	8	538.40	1,496.79	0.52	1.256	35101010	
65,326,268	0.530	---	---	---	04/07/2007	19/07/2006	4750	SATO SA (CR)	0.0175	2.94	0.017	27/04/2020	0.017	0.017	0.018	0.018	0.017 200@0.017	4740@0.018	---	---	15,000	2	260.00	1,143.21	0.016	0.0345	40202015	
13,191,620	0.620	---	---	---	04/08/2010	09/09/2002	5232	YALCO - CONSTANTINOU (CR)	0.064	---	0.064	27/04/2020	---	---	---	---	---	2000@0.073	---	---	---	---	---	---	844.26	0.05	0.0795	40202020
33,301,715	0.320	---	---	---	27/06/2003	08/07/2009	5195	AEGEK (CR)	0.0345	---	0.0345	27/04/2020	0.035	0.035	0.0365	0.0365	0.035 1991@0.036	496@0.037	---	---	3,538	11	125.59	1,148.91	0.0245	0.06	50101010	
13,000,000	1.00	---	---	---	01/08/2007	07/04/2000	5093	AKRITAS SA (CR)	0.344	---	0.344	27/04/2020	0.31	0.31	0.31	0.31	0.31 127@0.310	100@0.342	---	---	40	4	12.40	4,472.00	0.272	0.5	50101035	
185,373,016	0.300	---	---	---	02/07/2008	28/02/2011	4957	ANEK LINES SA (CR)	0.046	4.54	0.044	27/04/2020	0.044	0.044	0.049	0.046	0.047 6045@0.046	10941@0.049	---	---	91,555	16	4,336.72	8,846.61	0.03	0.072	40501015	
312,163	0.300	---	---	---	02/07/2008	28/02/2011	4959	ANEK LINES SA (PR, issue '90)	0.072	---	0.072	27/04/2020	---	---	---	---	---	---	---	---	---	---	---	---	8,846.61	0.058	0.072	40501015
2,969,713	0.300	---	---	---	02/07/2008	28/02/2011	4958	ANEK LINES SA (PR, issue '96)	0.1	---	0.1	27/04/2020	---	---	---	---	---	---	---	---	---	---	---	---	8,846.61	0.08	0.1	40501015
4,737,503	0.320	---	---	---	22/06/2005	22/09/2015	5115	VARANGIS AVEPE S.A. (CR)	0.128	---	0.128	27/04/2020	0.128	0.128	0.128	0.128	0.128	---	4556@0.103	---	---	100	1	12.80	606.40	0.103	0.16	40202015
6,330,002	0.300	---	---	---	25/06/2002	15/03/2019	5162	VARARESSOS (CR)	0.398	---	0.398	27/04/2020	---	---	---	---	---	---	196@0.398	---	2018	---	---	---	2,519.34	0.282	0.525	55101020
17,579,754	4.16	---	---	---	18/08/2006	02/08/2010	5156	BIOTER SA (CR)	0.08	---	0.08	27/04/2020	---	---	---	---	---	---	3000@0.080	---	---	---	---	---	1,406.38	0.041	0.082	50101010
15,878,748	0.480	---	---	---	10/07/2006	22/03/2004	5095	DOMIKI KRITIS SA (CR)	0.141	---	0.141	27/04/2020	0.141	0.141	0.141	0.141	0.141 55@0.141	3377@0.159	---	---	30	2	4.23	2,238.90	0.115	0.23	50101010	
3,961,300	1.28	---	---	---	29/06/2004	03/08/2000	5080	DUROS SA (CR)	0.17	---	0.17	27/04/2020	---	---	---	---	---	150@0.155	1900@0.170	---	2018	---	---	---	673.42	0.125	0.27	40204020
51,754,364	0.300	---	---	---	23/12/2003	24/01/2007	5197	SELECTED TEXT. IND. ASSOC (CR)	0.14	---	0.14	27/04/2020	---	---	---	---	---	500@0.140	400@0.149	---	---	---	---	---	7,245.61	0.117	0.25	55101020

Number of Outstanding Securities	Nominal Value	Dividends [1]			Date of Last Coupon		Note	Shares	Closing price	% change	Previous closing price/date	Open price	Price min	Price max	Last price	Avg price	Last Bid [7]	Last Ask [7]	P/E after tax	Year	Volume	Trades	Transactions Value[8]	Company Mkt Value (thou. €)	Year low	Year high	Sector[4]		
		2017	2018	2019	Dividend [2]	Right																							
11,125,110	0.300	---	---	---	02/06/2010	06/11/2017	5178	EUROCONSULTANTS S.A. (CR)	0.191	-3.53	0.198	27/04/2020	0.191	0.191	0.191	0.191	0.191	500@0.200	300@0.220	---	---	5,050	3	964.55	2,124.90	0.165	0.34	50205020	
7,125,216	0.650	---	---	---	01/07/2005	14/12/1999	4955	KRE.KA SA (CR)	0.14	---	0.14	27/04/2020	0.145	0.145	0.145	0.145	0.145	2040@0.140	289@0.165	---	2018	300	1	43.50	997.53	0.058	0.226	45102010	
7,734,375	1.00	---	---	---	09/07/2007	07/01/2011	5112	LIVANIS SA (CR)	0.0505	---	0.0505	27/04/2020	---	---	---	---	---	---	1333@0.060	---	---	---	---	---	390.59	0.0505	0.116	40301030	
15,842,391	1.51	---	---	---	15/07/2009	12/05/2000	5141	BITROS HOLDING SA (CR)	0.172	4.24	0.165	27/04/2020	0.17	0.17	0.179	0.179	0.172	100@0.179	3000@0.180	---	---	1,537	4	264.89	2,724.89	0.092	0.19	55102010	
119,596,817	0.040	---	---	---	15/07/2008	27/04/2017	5190	NIKAS SA (CR)	0.6	---	0.6	27/04/2020	---	---	---	---	---	---	400@0.720	---	---	---	---	---	71,758.09	0.4	0.6	45102020	
24,319,250	0.300	---	---	---	09/07/2002	04/07/2007	5165	PROODEFTIKH SA (CR)	0.17	---	0.17	27/04/2020	---	---	---	---	---	5500@0.150	10000@0.166	---	---	---	---	---	4,134.27	0.11	0.206	50101010	
245,497,664	0.310	---	---	---	01/07/2008	30/07/2012	5207	SELONDA AQUACULTURE SA (CR)	0.1	---	0.1	27/04/2020	0.1	0.1	0.1	0.1	0.1	172213@0.100	418@0.110	---	---	12,527	3	1,252.70	24,549.77	0.1	0.101	45102010	
10,186,667	1.35	---	---	---	24/06/2008	02/02/2016	4887	SIDMA SA (CR)	0.42	0.48	0.418	27/04/2020	0.418	0.418	0.42	0.42	0.419	1810@0.374	3969@0.420	---	---	3,272	14	1,372.18	4,278.40	0.192	0.57	55102010	
766,000	1.00	---	---	---	01/07/2004	11/12/2012	5193	TRIA ALFA SA (CR)	1.8	---	1.8	27/04/2020	---	---	---	---	---	---	25@1.80	55.15	2018	---	---	---	1,658.10	1.44	2.16	55101020	
245,000	1.00	---	---	---	19/07/2010	11/12/2012	5194	TRIA ALFA SA (PR)	1.14	---	1.14	27/04/2020	---	---	---	---	---	---	170@1.14	---	34.93	2018	---	---	---	1,658.10	0.9	1.17	55101020

## Suspension Status

20,255,805	0.300	---	---	---	22/08/2006	02/08/2010	5136	AXON HOLDING SA (CR)	0.058	---	0.058	28/04/2017	---	---	---	---	---	---	---	---	---	---	---	---	---	1,174.84	0.058	0.058	20101010
21,820,410	0.800	---	---	---	22/05/2008	02/08/2011	5174	EUROMEDICA SA (CR)	0.448	---	0.448	30/04/2018	---	---	---	---	---	---	---	---	---	---	---	---	---	9,775.54	0.448	0.448	20101010
66,948,210	0.300	---	---	---	22/09/2015	22/09/2015	5179	FOLLI FOLLIE (CR)	4.8	---	4.8	24/05/2018	---	---	---	---	---	---	---	---	---	---	---	---	---	321,351.41	4.8	4.8	40401030
14,870,100	0.300	---	---	---	15/05/2008	26/09/2011	5130	ALPHA GRISSIN S.A. (CR)	0.014	---	0.014	13/04/2017	---	---	---	---	---	---	---	---	---	---	---	---	---	208.18	0.014	0.014	10102030
33,930,000	0.300	---	---	---	03/07/2006	30/05/2001	4865	BABIS VOVOS SA (CR)	0.304	---	0.304	30/03/2012	---	---	---	---	---	---	---	---	---	---	---	---	---	10,314.72	0.304	0.304	35101010
77,126,446	0.340	---	---	---	23/05/2005	18/08/2011	5206	G.E. DIMITRIOU (CR)	0.0125	---	0.0125	30/04/2019	---	---	---	---	---	---	---	---	---	---	---	---	---	964.08	0.0125	0.0125	40202020
6,000,000	0.600	---	---	---	13/06/2008	08/04/2004	5172	EUROBROKERS S.A. (CR)	0.008	---	0.008	27/04/2018	---	---	---	---	---	---	---	---	---	---	---	---	---	48.00	0.008	0.008	30302015
7,085,888	1.59	---	---	---	02/07/1996	06/09/2010	5216	ELVIEMEK (CR)	2.6	---	2.6	30/09/2019	---	---	---	---	---	---	---	---	---	---	---	---	---	18,423.31	2.6	2.6	35101010
25,179,640	0.600	---	---	---	08/08/1994	19/09/2000	5191	J.BOUTARIS & SON (CR)	0.026	---	0.026	01/10/2018	---	---	---	---	---	---	---	---	---	---	---	---	---	742.45	0.026	0.026	45101015
1,540,000	0.600	---	---	---	08/08/1994	19/09/2000	5192	J.BOUTARIS & SON (PR)	0.057	---	0.057	01/10/2018	---	---	---	---	---	---	---	---	---	---	---	---	---	742.45	0.057	0.057	45101015
24,619,524	0.500	---	---	---	10/10/1986	30/12/2002	4914	KERAMIA-ALLATINI (CR)	0.088	---	0.088	30/08/2012	---	---	---	---	---	---	---	---	---	---	---	---	---	2,166.52	0.088	0.088	35101010
31,543,600	0.420	---	---	---	19/07/2010	19/12/2018	5205	KRETA FARM SA (CR)	1.085	---	1.085	30/04/2019	---	---	---	---	---	---	---	---	---	---	---	---	---	34,224.81	1.085	1.085	45102020
23,935,280	0.300	---	---	---	29/06/2009	13/06/2000	5153	NAYTEMPORIKI PUBLISHING SA(CR)	0.107	---	0.107	02/10/2017	---	---	---	---	---	---	---	---	---	---	---	---	---	2,561.07	0.107	0.107	40301030
255,459,600	0.300	---	---	---	26/06/2000	03/12/2010	5101	NEL SA (CR)	0.07	---	0.07	31/08/2015	---	---	---	---	---	---	---	---	---	---	---	---	---	17,882.17	0.07	0.07	40501015
23,463,874	0.800	---	---	---	23/05/2003	21/12/1999	4918	NEORION SA (CR)	0.125	---	0.125	30/08/2012	---	---	---	---	---	---	---	---	---	---	---	---	---	2,932.98	0.125	0.125	50206030
18,750,000	0.300	---	---	---	02/07/2001	31/12/2012	5154	PEGASUS PUBLISHING S.A. (CR)	0.089	---	0.089	02/10/2017	---	---	---	---	---	---	---	---	---	---	---	---	---	1,668.75	0.089	0.089	40301030
100,793,572	0.300	---	---	---	16/07/2009	11/02/2016	5110	TELETIPOS SA (CR)	0.06	---	0.06	07/03/2016	---	---	---	---	---	---	---	---	---	---	---	---	---	6,047.61	0.06	0.06	40301035
4,034,950	0.680	---	---	---	01/07/2005	30/12/2010	5171	CHATZIKRANIOTIS & SONS SA (CR)	0.14	---	0.14	27/04/2018	---	---	---	---	---	---	---	---	---	---	---	---	---	564.89	0.14	0.14	45102020

## Shares' Notes

Code	Note text
( )	- Adjusted dividends.
*	- Last adjusted closing price.
[1]	- Net dividends.
[2]	- The "Date of Last Coupon" for New listings refers to the date company's stocks started to trade in Athex
[3]	- The Company Market Value is referred to the number of outstanding shares
[4]	- Sectors codification can be found in Appendix A
[5]	- The Market Value refers to the total number of shares listed (including their several classes) in the exchange by the company.
[6]	- P/E greater than 100
[7]	- Last view of the Order Book before the end of the trading session
[8]	- All Blocks Methods' Transactions Value are included.
4750	- Transfer to the Under Surveillance Category from 8/4/2011.
4865	- Suspension of trading as of 2/4/2012.
4887	- Transfer to the Surveillance Category as of 10/4/2012.
4912	- Transfer to the Surveillance Category as of 31/7/2012.
4914	- Suspension of trading as of 31/8/2012.
4918	- Suspension of trading as of 31/8/2012.
4955	- Transfer to the Surveillance Category as from 5/4/2013.
4957	- Transfer to the Surveillance Category as from 5/4/2013.
4958	- Transfer to the Surveillance Category as from 5/4/2013.
4959	- Transfer to the Surveillance Category as from 5/4/2013.
5080	- Transfer to the Surveillance Category as of 05/12/2014.
5093	- Transfer to the Surveillance Category as of 8/4/2015.
5095	- Transfer to the Surveillance Category as from 09/04/2015.
5101	- Suspension of trading as of 1/9/2015.
5110	- Suspension of trading as of 08/03/2016.
5112	- Transfer to the Surveillance Category as of 15/04/2016.
5115	- Transfer to the Surveillance Category as of 15/04/2016.
5123	- Transfer to the Surveillance Category as of 01/04/2016.
5130	- Suspension of trading as of 18/04/2017.
5136	- Suspension of trading as of 02/05/2017.
5141	- Transfer to the Surveillance Category as of 10/05/2017.
5153	- Suspension of trading as of 03/10/2017.
5154	- Suspension of trading as of 03/10/2017.
5156	- Transfer to the Surveillance Category as of 11/12/2017.
5160	- Transfer to the Surveillance Category as of 15/04/2016.
5161	- Transfer to the Surveillance Category as of 25/11/2011.
5162	- Transfer to the Under Supervision Category as of 21/12/2009.
5165	- Transfer to the Surveillance Category as of 15/02/2018.
5171	- Suspension of trading as of 30/04/2018.
5172	- Suspension of trading as of 30/04/2018.
5174	- Suspension of trading as of 02/05/2018.
5178	- Transfer to the Surveillance Category as of 11/05/2018.
5179	- Suspension of trading as of 25/05/2018.
5190	- Transfer to the Surveillance Category as of 01/10/2018.
5191	- Suspension of trading as of 02/10/2018.
5192	- Suspension of trading as of 02/10/2018.
5193	- Transfer to the Surveillance Category as of 25/10/2018.
5194	- Transfer to the Surveillance Category as of 25/10/2018.
5195	- Transfer to the Surveillance Category as of 25/10/2018.
5197	- Transfer to the Surveillance Category as of 07/11/2018.
5205	- Suspension of trading as of 02/05/2019.

---

## Shares' Notes

---

Code	Note text
5206	- Suspension of trading as of 02/05/2019.
5207	- Transfer to the Surveillance Category as from 13/05/2019.
5216	- Suspension of trading as of 01/10/2019.
5231	- Transfer to the Surveillance Category as from 5/4/2013.
5232	- Transfer to the Under Surveillance Category from 08/04/2011.



Securities Blocks Details

Securities	Block Volume	Price	Block Trade Value	Time of approval	Note
OPAP (CR)	100,000	7.95	795,000.00	10:45:08	20
ALPHA BANK (CR)	500,000	0.654	327,000.00	11:14:05	20
ALPHA BANK (CR)	500,000	0.668	334,200.00	12:27:43	20
OPAP (CR)	44,085	8.00	352,680.00	13:13:21	20
ALPHA BANK (CR)	500,000	0.670	335,000.00	13:21:10	20
ALPHA BANK (CR)	500,000	0.668	333,750.00	13:26:42	20
ALPHA BANK (CR)	1,500,000	0.666	999,000.00	13:38:32	20
ALPHA BANK (CR)	500,000	0.666	332,900.00	13:42:37	20
ALPHA BANK (CR)	700,000	0.666	465,920.00	14:12:07	20
ALPHA BANK (CR)	750,000	0.665	498,750.00	15:35:52	20
ALPHA BANK (CR)	558,086	0.670	373,917.62	16:03:24	20

Blocks Notes

- 9 - Method 6-1 / Special Fees
- 10 - Method 6-1 / Special Fees, SDS
- 14 - Method 6-3 / Settlement, Incomplete Buy and Sell
- 18 - Method 6-2 / SPOT 1
- 19 - Method 6-2 / SPOT 2
- 20 - Method 6-1 and Method 6-1 Same Day Settlement
- 21 - Other Pre-agreed

**Shares Rights Details**

Occured date	Exercise from	Exercise until	Trading until	<b>Rights</b>	Price min	Price max	Closing price	Last Bid	Last Ask	Volume	Trades	Transactions Value
--------------	---------------	----------------	---------------	---------------	-----------	-----------	---------------	----------	----------	--------	--------	--------------------

No Rights Transactions.

---

**Securities Forced Sales**

---

Securities	Category of Security	Transactions Volume	Number of Trades	Transactions Value	Note
------------	----------------------	------------------------	---------------------	-----------------------	------

---

No Forced Transactions.

---

---

**Forced Sales Notes**

---

- 1 - Normal Forced Sale.
- 2 - Forced Sales of Fixed Registered Shares.
- 3 - Forced Sales of Remaining Stock Fractions.

**Forced Sales Registered Shares**

Securities	Start Date	End Date	Initial Volume	Remaining Volume	Date	Avg price (day)	Avg price (period)	Number of Trades	Transactions Volume	Transactions Value
------------	------------	----------	----------------	------------------	------	-----------------	--------------------	------------------	---------------------	--------------------

No Fixed Registered Shares Forced Sales.

**Forced Sales Notes**

According to Decision 1/380/04.05.2008 of the Hellenic Republic Capital Market Commission, the certificated registered shares that have not been deposited to the issuer for dematerialisation, will be auctioned in the Athens Exchange by the supervising issuer. Forced sales procedure is held according to Article 99A of the Athens Exchange Rulebook. The average price of the period is calculated by dividing the Total transactions value by the Total volume and includes all the transactions made until the current date.

## Exchange Traded Funds (ETFs) Characteristics

	Transactions Date (T)	Creation / Redemption	Units (T-1)	New Units (T-1)	Redemption Units (T-1)	Units (T) [1]	Fund Assets [2]	Net Unit Price	Dividend per Unit	Dividend Date
ALPHA ETF FTSE Athex Large Cap	28/04/2020	5,000	812,382	---	---	812,382	12,695,220.00	15.6272	0.43	30/06/2018

## ETFs Notes

[1] - Units (T) = Units (T-1) + New Units (T-1) - Redemption Units (T-1)

[2] - The Creation / Redemption Units of T-1 are included.

## Convertible Corporate Bonds - Regulated Market

Num Listed Bonds	Nominal price	Issue price	Today's Rate	Exp. Date	Duration (years)	Note	Coupon		Trading	Corporate Bonds	Price min	Price max	Closing price	Previous closing price/date	Volume	Transactions Value	Last order			ear min	Year max
							Common	Preferred									Price	Buy / Sell	Date		
171,246,551	0.30	0.30	1.00	11/10/2025	9	---	15	---	1	FORTHNET S.A. (Convertible)	---	---	---	---	---	---	10.0000	B	28/04/2020	100.0000	100.0000

## Corporate Bonds Notes

Transactions Volume = (Pieces) \* (Nominal Price). Transactions Value = (Pieces) \* (Nominal Price) \* (price %) + (Accrued interest).

The price of a Bond is stated as a percentage (%) of Bond's Nominal Price.

Nominal Price in Euros (€), except if it is noted differently.

## Non Convertible Corporate Bonds - Regulated Market

Num Listed Bonds	Nominal price	Issue price	Today's Rate	Exp. Date	Duration (years)	Note	Coupon		Trading	Corporate Bonds	Accrued Int.	Yield.T.Mat	Price min	Price max	Closing price	Previous closing price/date	Volume	Transactions Value	Last order			ear min	Year max	
							Common	Preferred											Price	Buy / Sell	Date			
175,000	1,000.00	1,000.00	3.40	26/07/2024	5	---	2	---	1	ATTICA HOLDINGS S.A. (Non Convertible)	8.8778	10.9800	76.0000	77.0000	77.0000	75.0000	27/04/2020	69,000	53,427.69	77.0000	B	28/04/2020	58.8701	100.0000
300,000	1,000.00	1,000.00	3.10	27/06/2022	5	---	6	---	1	MYTILINEOS HOLDINGS S.A. (Non Convertible)	10.7639	3.3420	98.5000	99.1500	98.8964	98.9190	27/04/2020	238,000	237,935.35	98.5000	B	28/04/2020	88.5000	101.0000
50,000	1,000.00	1,000.00	4.25	20/06/2022	5	---	6	---	1	SYSTEMS SUNLIGHT S.A. (Non Convertible)	15.5833	4.0810	98.2000	99.9400	99.3336	99.8000	24/04/2020	50,000	50,445.97	98.3010	B	28/04/2020	88.0000	102.0000
40,000,000	1.00	1.00	5.00	04/10/2021	5	---	15	---	1	HOUSEMARKET S.A. (Non Convertible)	0.0033	5.4910	98.0000	99.5000	98.0000	98.0000	27/04/2020	93,000	91,684.97	97.8201	B	28/04/2020	93.8736	105.1000
24,260	1,000.00	1,000.00	4.95	26/06/2023	5	---	4	---	1	B&F COMM. & GARM. INDUS. S.A. (Non Convertible)	17.1875	11.1410	81.5094	83.1700	82.9446	82.9640	27/04/2020	36,000	30,419.22	82.8000	B	28/04/2020	68.0000	94.9999
90,000	1,000.00	1,000.00	3.00	11/05/2023	5	---	4	---	1	CORAL A.E. (Non Convertible)	14.2500	2.8310	100.0000	100.0000	100.0000	100.2690	27/04/2020	4,000	4,057.00	99.5000	B	28/04/2020	89.4200	105.0000
120,000	1,000.00	1,000.00	3.95	04/04/2025	7	---	5	---	1	GEK TERNA S.A. (Non Convertible)	2.6333	3.6700	99.9000	99.9000	99.9000	99.4700	24/04/2020	12,000	12,019.60	99.6000	B	28/04/2020	91.0000	107.2000
150,000	1,000.00	1,000.00	2.60	22/10/2026	7	---	2	---	1	TERNA ENERGY FINANCE S.A. (Non Convertible)	0.5778	2.9990	97.0000	98.2000	97.5810	97.9060	27/04/2020	40,000	39,055.51	97.4000	B	28/04/2020	84.4000	102.8000
200,000	1,000.00	1,000.00	3.60	12/03/2026	7	---	3	---	1	AEGEAN AIRLINES S.A. (Non Convertible)	4.9000	5.8730	88.9000	88.9000	88.9000	87.8020	27/04/2020	20,000	17,878.00	88.0000	B	28/04/2020	54.7313	107.3000

## Corporate Bonds Notes

Transactions Volume = (Pieces) \* (Nominal Price). Transactions Value = (Pieces) \* (Nominal Price) \* (price %) + (Accrued interest).

The price of a Bond is stated as a percentage (%) of Bond's Nominal Price.

Nominal Price in Euros (€), except if it is noted differently.

## Government Bonds

Number Listed Bonds	Nominal price	Today's Rate	Accrued Interest Calc	Exp. Date [1]	Duration (years)	Note	Coupons Date	Curr. coupon value	Trading Unit	Government Bonds	Price min	Price max	Closing price	Previous closing price/date	Volume	Transactions Value	Price	Last order Buy / Sell	Date
3,000,000	1,000.00	4.38	Actual/Actual	01/08/2022	5	---	01/08	4.38	1	GGB-FXD-010822-05Y-4.375-1.000	---	---	---	---	---	---	1.0000	B	28/11/2018
2,500,000	1,000.00	1.88	Actual/Actual	04/02/2035	15	---	04/02	1.88	1	GGB-FXD-040235-15Y-1.875-1.000	---	---	---	---	---	---	---	---	---
2,500,000	1,000.00	3.45	Actual/Actual	02/04/2024	5	---	02/04	3.45	1	GGB-FXD-020424-05Y-3.450-1.000	---	---	---	---	---	---	---	---	---
4,355,990,324	1.00	3.50	Actual/Actual	30/01/2023	5	---	01/02 - 31/01	3.50	1	GGB-FXD-300123-05Y-3.500-1.000	---	---	---	94.5720 13/07/2018	---	---	1.0000	B	28/11/2018
5,962,747,327	1.00	3.75	Actual/Actual	30/01/2028	10	---	/02 - 01/02 - 31/	3.75	1	GGB-FXD-300128-10Y-3.750-1.000	---	---	---	85.4610 13/07/2018	---	---	1.0000	B	28/11/2018
6,091,218,404	1.00	3.90	Actual/Actual	30/01/2033	15	---	/02 - 01/02 - 31/	3.90	1	GGB-FXD-300133-15Y-3.900-1.000	---	---	---	78.6730 13/07/2018	---	---	1.0000	B	28/11/2018
4,805,399,486	1.00	4.00	Actual/Actual	30/01/2037	19	---	/02 - 01/02 - 31/	4.00	1	GGB-FXD-300137-19Y-4.000-1.000	---	---	---	77.0370 13/07/2018	---	---	1.0000	B	28/11/2018
4,603,713,186	1.00	4.20	Actual/Actual	30/01/2042	24	---	/02 - 01/02 - 31/	4.20	1	GGB-FXD-300142-24Y-4.200-1.000	---	---	---	77.7640 13/07/2018	---	---	1.0000	B	28/11/2018
550,418,123	1.00	3.65	Actual/Actual	24/02/2023	11	---	24/02	3.65	1	GGB-FXD-240223-11Y-2.000-1.000	---	---	---	10.0000 22/06/2015	---	---	10.0000	B	11/07/2019
445,007,576	1.00	3.65	Actual/Actual	24/02/2024	12	---	24/02	3.65	1	GGB-FXD-240224-12Y-2.000-1.000	---	---	---	10.0000 22/06/2015	---	---	---	---	---
423,674,226	1.00	3.65	Actual/Actual	24/02/2025	13	---	24/02	3.65	1	GGB-FXD-240225-13Y-2.000-1.000	---	---	---	10.0000 22/06/2015	---	---	---	---	---
212,292,153	1.00	3.65	Actual/Actual	24/02/2026	14	---	24/02	3.65	1	GGB-FXD-240226-14Y-2.000-1.000	---	---	---	10.0000 22/06/2015	---	---	---	---	---
160,621,352	1.00	3.65	Actual/Actual	24/02/2027	15	---	24/02	3.65	1	GGB-FXD-240227-15Y-2.000-1.000	---	---	---	10.0000 22/06/2015	---	---	---	---	---
183,244,055	1.00	3.65	Actual/Actual	24/02/2028	16	---	24/02	3.65	1	GGB-FXD-240228-16Y-2.000-1.000	---	---	---	10.0000 22/06/2015	---	---	---	---	---
164,802,894	1.00	3.65	Actual/Actual	24/02/2029	17	---	24/02	3.65	1	GGB-FXD-240229-17Y-2.000-1.000	---	---	---	10.0000 22/06/2015	---	---	---	---	---
165,460,943	1.00	3.65	Actual/Actual	24/02/2030	18	---	24/02	3.65	1	GGB-FXD-240230-18Y-2.000-1.000	---	---	---	10.0000 22/06/2015	---	---	---	---	---
129,007,241	1.00	3.65	Actual/Actual	24/02/2031	19	---	24/02	3.65	1	GGB-FXD-240231-19Y-2.000-1.000	---	---	---	10.0000 22/06/2015	---	---	---	---	---
126,192,683	1.00	3.65	Actual/Actual	24/02/2032	20	---	24/02	3.65	1	GGB-FXD-240232-20Y-2.000-1.000	---	---	---	10.0000 22/06/2015	---	---	---	---	---
146,905,168	1.00	3.65	Actual/Actual	24/02/2033	21	---	24/02	3.65	1	GGB-FXD-240233-21Y-2.000-1.000	---	---	---	10.0000 22/06/2015	---	---	---	---	---
154,475,606	1.00	3.65	Actual/Actual	24/02/2034	22	---	24/02	3.65	1	GGB-FXD-240234-22Y-2.000-1.000	---	---	---	10.0000 22/06/2015	---	---	---	---	---
144,429,441	1.00	3.65	Actual/Actual	24/02/2035	23	---	24/02	3.65	1	GGB-FXD-240235-23Y-2.000-1.000	---	---	---	10.0000 22/06/2015	---	---	---	---	---
166,211,676	1.00	3.65	Actual/Actual	24/02/2036	24	---	24/02	3.65	1	GGB-FXD-240236-24Y-2.000-1.000	---	---	---	10.0000 22/06/2015	---	---	---	---	---
145,461,669	1.00	3.65	Actual/Actual	24/02/2037	25	---	24/02	3.65	1	GGB-FXD-240237-25Y-2.000-1.000	---	---	---	10.0000 22/06/2015	---	---	---	---	---
146,941,087	1.00	3.65	Actual/Actual	24/02/2038	26	---	24/02	3.65	1	GGB-FXD-240238-26Y-2.000-1.000	---	---	---	10.0000 22/06/2015	---	---	---	---	---
135,115,612	1.00	3.65	Actual/Actual	24/02/2039	27	---	24/02	3.65	1	GGB-FXD-240239-27Y-2.000-1.000	---	---	---	10.0000 22/06/2015	---	---	---	---	---
141,909,637	1.00	3.65	Actual/Actual	24/02/2040	28	---	24/02	3.65	1	GGB-FXD-240240-28Y-2.000-1.000	---	---	---	10.0000 22/06/2015	---	---	---	---	---
136,788,720	1.00	3.65	Actual/Actual	24/02/2041	29	---	24/02	3.65	1	GGB-FXD-240241-29Y-2.000-1.000	---	---	---	10.0000 22/06/2015	---	---	---	---	---
163,643,410	1.00	3.65	Actual/Actual	24/02/2042	30	---	24/02	3.65	1	GGB-FXD-240242-30Y-2.000-1.000	---	---	---	10.0000 22/06/2015	---	---	---	---	---
4,000,000	1,000.00	3.88	Actual/Actual	12/03/2029	10	---	12/03	3.88	1	GGB-FXD-120329-10Y-3.875-1.000	---	---	---	---	---	---	100.0000	B	15/10/2019
503,753	1,000.00	0.32	FLR Actual/360	16/09/2021	2	---	16/03 - 16/09	---	1	GGB-FLT-160921-02Y-0.319-1.000	---	---	---	---	---	---	---	---	---
3,000,000	1,000.00	3.38	Actual/Actual	15/02/2025	7	---	15/02	3.38	1	GGB-FXD-150225-07Y-3.375-1.000	---	---	---	---	---	---	---	---	---
250,250	1,000.00	2.90	Actual/Actual	20/03/2023	4	---	20/03	2.90	1	GGB-FXD-200323-04Y-2.900-1.000	---	---	---	---	---	---	---	---	---
964,000	1,000.00	3.25	Actual/Actual	20/03/2025	6	---	20/03	3.25	1	GGB-FXD-200325-06Y-3.250-1.000	---	---	---	---	---	---	---	---	---
2,100,000	1,000.00	3.55	Actual/Actual	20/03/2026	7	---	20/03	3.55	1	GGB-FXD-200326-07Y-3.550-1.000	---	---	---	---	---	---	---	---	---
3,314,250	1,000.00	3.25	Actual/Actual	20/03/2050	30	---	20/03	3.25	1	GGB-FXD-200350-30Y-3.250-1.000	---	---	---	---	---	---	---	---	---

## Government Bonds Notes

Transactions Volume = (Pieces) \* (Nominal Price). Transactions Value = (Pieces) \* (Nominal Price) \* (price %) + (Accrued interest).

The Value of current coupon for the issues with NV 0.01 euro refers to NV 100 euros

FLR: Floating Interest Rate.

[1] - The Expiration Date of the interest bearing period and the Date for coupon payment.



## Government Bonds

Number Listed Bonds	Nominal price	Today's Rate	Accrued Interest Calc	Exp. Date [1]	Duration (years)	Note	Coupons Date	Curr. coupon value	Trading Unit	Government Bonds	Price min	Price max	Closing price	Previous closing price/date	Volume	Transactions Value	Price	Last order Buy / Sell	Date
2,000,000	1,000.00	2.00	Actual/Actual	22/04/2027	7	---	22/04	2.00	1	GGB-FXD-220427-07Y-2.000-1.000	---	---	---	---	---	---	99.9000	B	22/04/2020
2,500,000	1,000.00	1.88	Actual/Actual	23/07/2026	7	---	23/07	1.88	1	GGB-FXD-230726-07Y-1.875-1.000	---	---	---	---	---	---	---	---	---

## Government Bonds Notes

Transactions Volume = (Pieces) \* (Nominal Price). Transactions Value = (Pieces) \* (Nominal Price) \* (price %) + (Accrued interest).

The Value of current coupon for the issues with NV 0.01 euro refers to NV 100 euros

FLR: Floating Interest Rate.

[1] - The Expiration Date of the interest bearing period and the Date for coupon payment.

Treasury Bills & Zero Coupon Government Bonds

Issue Date	13-Week Maturity									26-Week Maturity									52-Week Maturity								
	Exp. Date	Initial Rate	Num Listed Bonds	Nominal price	Issue price	Last Trade Price	Last Trade Date	Volume Traded	Note	Exp. Date	Initial Rate	Num Listed Bonds	Nominal price	Issue price	Last Trade Price	Last Trade Date	Volume Traded	Note	Exp. Date	Initial Rate	Num Listed Bonds	Nominal price	Issue price	Last Trade Price	Last Trade Date	Volume Traded	Note
14/06/2019	---	---	---	---	---	---	---	---	---	---	---	---	---	---	---	---	---	---	12/06/2020	0.47	1,000,000	1,000.00	995.30	---	---	---	---
13/09/2019	---	---	---	---	---	---	---	---	---	---	---	---	---	---	---	---	---	---	11/09/2020	0.29	1,000,000	1,000.00	997.05	---	---	---	---
13/12/2019	---	---	---	---	---	---	---	---	---	---	---	---	---	---	---	---	---	---	11/12/2020	0.07	1,000,000	1,000.00	999.30	---	---	---	---
13/03/2020	---	---	---	---	---	---	---	---	---	---	---	---	---	---	---	---	---	---	12/03/2021	0.24	600,000	1,000.00	1,000.00	---	---	---	---

Bonds in Circulation	Currency / Min nominal traded Value	Coupons Payment Date	Current Coupon Value	Note	Coupon	Trading Unit	Issue Date	Duration (years)	Today's Interest	A.I.C in days	Bonds	Last price of previous days		Last Outcry in Cash (euro)			Trades in Pieces	Life min	Life Max
												Price	Buy / Sell	Price	Buy / Sell	Date			
<b>Corporate Bonds in Foreign Currency and Euro</b>																			
103,746	GBP / 10	01/12	0.25	---	61	1	01/12/1930	98	2.5	360	National Mortgage Bank	2.27	05/02/1996	2.27	S	05/02/1996	---	2.27	2.27
0	GBP / 10	01/12	0.25	---	63	1	01/12/1928	100	2.5	360	National Mortgage Bank	---	---	---	---	---	---	---	---

## Government Bonds Notes

A.I.C: Accrued Interest Calculation base.

FLR: Floating Interest Rate.

The minimum tradeable Nominal Value for all Demeterialised Government Titles is 100 Euros.

(μτφρ-0)

Athex & ATHEXClear Members List

Member Name				Stock Market			Derivatives Market		ATHEXClear Member	
	Address	Phone	Fax	Market Member	Remote Member	Market Maker	Proprietary	Market Maker	General Clearing	Direct Clearing
A. SARRIS SECURITIES S.A.				a						
6, ΔΡΑΓΑΤΖΑΝΙΟΥ 6 ΑΘΗΝΑ	2103367700									
AEONIC SECURITIES C.I.F. P.L.C.					a					
, ΛΑΪΟΥ 6, ΓΡ. 301B, ANNA COURT	35725337600									
ALPHA BANK A.E.									a	
103, AVE. ATHINON ΑΘΗΝΑ	+30 2103436820	210-3436270								
40, ΣΤΑΔΙΟΥ STR ΑΘΗΝΑ	(210)-3260000	(210)-3264116								
	(210)-3265546	(210)-3265811								
ALPHA FINANCE INVESTMENT SERVICES S.A.				a		a	a	a		a
5, ΜΕΡΛΙΝ 5 ΑΘΗΝΑ	2103677400									
ARGUS STOCKBROKERS LTD				a	a		a			
25, 25 ΛΕΩΦΟΡΟΣ ΔΗΜΟΣΘΕΝΗ ΣΕΒΕΡΗ	0035722717000									
ATLANTIC SECURITIES LIMITED				a						
37, ΠΡΟΔΡΟΜΟΥ 37	0035722445400									
ATLANTIC SECURITIES LTD					a					
, ΠΡΟΔΡΟΜΟΥ 37	0035722445400									
AXON SECURITIES S.A.				a			a			
48, ΣΤΑΔΙΟΥ 48 ΑΘΗΝΑ	2103363800									
BETA SECURITIES S.A.				a		a	a			a
29, Λ. ΑΛΕΞΑΝΔΡΑΣ 29 ΑΘΗΝΑ	2106478930									
BNP PARIBAS SECURITIES SERVICES									a	
2, ΛΑΜΨΑΚΟΥ 2 ΑΘΗΝΑ	2107468500									
BOFA SECURITIES EUROPE SA				a	a					
, 112 AVENUE KL?BER 75116	+33 153655555									
CAPITAL SECURITIES S.A.				a			a			
58, ΜΗΤΡΟΠΟΛΕΩΣ 58 ΑΘΗΝΑ	2103369700									
CFS SECURITIES INVESTMENT SERVICES S.A.				a						
3, ΠΑΠΑΡΡΗΓΟΠΟΥΛΟΥ 3 ΑΘΗΝΑ	2103360800									
CITIGROUP GLOBAL MARKETS EUROPE AG				a	a					
16, REUTERWEG 16 FRANKFURT	+49 691366-0									
CITIGROUP GLOBAL MARKETS LIMITED				a	a					
1, 33 CANADA SQUARE -CANARY WHARF	+44 02079864000									
CREDIT SUISSE SECURITIES (EUROPE) LIMITED				a	a					
1, ONE CABOT SQUARE LONDON	+44 2078888888									
CREDIT SUISSE SECURITIES SOCIEDAD DE VALORES SA				a	a					
, CALLE AYALA 42, 3A PLANTA-B MADRID	+34917916000									
CYCLOS SECURITIES S.A.				a			a			a
39, ΠΑΝΕΠΙΣΤΗΜΙΟΥ 39 ΑΘΗΝΑ	2103364300									
DEUTSCHE BANK S.A.					a					
1, GREAT WINCHESTER STREET LONDON	+44 20 754 54209	00441133361437								
DYNAMIC SECURITIES S.A.				a			a			a
, ΤΡΑΥΛΕΩΝ 2 & Λ. ΣΥΓΓΡΟΥ 223 ΝΕΑ ΣΜΥΡΝΗ	2103677700									
EUROBANK EQUITIES INVESTMENT FIRM S.A				a		a	a	a		a
, ΦΙΛΕΛΗΝΩΝ 10 & ΞΕΝΟΦΩΝΤΟΣ 13 ΑΘΗΝΑ	2103720000									
EUROBANK S.A.									a	
, ΟΘΩΝΟΣ 8 ΑΘΗΝΑ	2103337000									
EUROCORP INVESTMENT SERVICES S.A.				a			a			a
14, ΠΛ. ΦΙΛΙΚΗΣ ΕΤΑΙΡΕΙΑΣ 14 ΑΘΗΝΑ	2107263600									
EUROTRUST INVESTMENT FIRM SA				a						
113, ΣΕΒΑΣΤΟΥΠΟΛΕΩΣ 113 ΑΘΗΝΑ	2103363100									
EUROXX SECURITIES S.A.				a		a	a	a		a
7, ΠΑΛΕΟΛΟΓΟΥ ΧΑΛΑΝΔΡΙ	+30 2106879400	210-6879401								
7, ΠΑΛΑΙΟΛΟΓΟΥ ΧΑΛΑΝΔΡΙ	(210)-6879400	(210)-6879401								
G. A. PERVANAS SECURITIES- INVESTMENT SERVICES S.A.				a						
7-9, ΣΟΦΟΚΛΕΟΥΣ 7-9 ΑΘΗΝΑ	2103727200									
GLOBAL CAPITAL SECURITIES & FINANCIAL SERVICES LTD				a	a					
50, Λ. ΑΡΧΙΕΠΙΣΚΟΠΟΥ ΜΑΚΑΡΙΟΥ Γ50	0035722710710									
HELLENIC AMERICAN SECURITIES S.A.				a		a	a			a
27, ΑΝΔΡΕΑ ΠΑΠΑΝΔΡΕΟΥ 27 ΜΑΡΟΥΣΙ	2103311100									
HELLENIC BANK (INVESTMENTS) LTD					a					
, AVE. KYRIAKOU MATSI 31 - PO BOX 24747 NICOSIA	+357 22500100	357 22500110								

Athex & ATHEXClear Members List

Member Name	Stock Market			Derivatives Market		ATHEXClear Member				
	Address	Phone	Fax	Market Member	Remote Member	Market Maker	Proprietary	Market Maker	General Clearing	Direct Clearing
HSBC FRANCE									a	
109-111, Α ΜΕΣΟΓΕΙΩΝ 109-111	2106960000									
INDEX SECURITIES S.A.				a						
6, ΔΡΑΓΑΤΣΑΝΙΟΥ 6 ΑΘΗΝΑ	2103213920									
J. CHR. MAVRIKIS SECURITIES S.A.				a						
5, ΣΟΦΟΚΛΕΟΥΣ 5 ΑΘΗΝΑ	2103216730									
KAPPA SECURITIES S.A.				a			a			
15, ΒΑΛΑΩΡΙΤΟΥ 15 ΑΘΗΝΑ	2103678600									
KARAMANOF SECURITIES & INVESTMENT SERVICES S.A.				a			a			
2, ΠΛ.ΑΓ.ΘΕΟΔΩΡΩΝ 2 ΑΘΗΝΑ	2103212947									
LAIKI FINANCIAL SERVICES LTD					a					
26, AVE. VYRONOS NICOSIA	357 22367367	357 22718567								
LEON DEPOLAS SECURITIES S.A.				a		a	a			
1, ΧΡΗΣΤΟΥ ΛΑΔΑ 1 ΑΘΗΝΑ	2103213276 -28									
MEGA EQUITY SECURITIES & FINANCIAL SERVICES PUBLIC LTD				a	a		a			
42-44, ΛΕΩΦ.ΓΡΙΒΑ ΔΙΓΓΕΝΗ 42-44	0035722711711									
MERIT SECURITIES S.A.				a		a	a			a
5, ΣΟΦΟΚΛΕΟΥΣ 5 ΑΘΗΝΑ	2103671880									
MERRILL LYNCH INTERNATIONAL				a	a					
2, 2 KING EDWARD STREET LONDON	+44 20276281000									
N. CHRYSOCHOIDIS SECURITIES S.A.				a			a			a
7-9, ΣΟΦΟΚΛΕΟΥΣ 7-9 ΑΘΗΝΑ	2103213913									
NATIONAL BANK OF GREECE S.A.				a		a	a		a	
68, ΑΚΑΔΙΜΙΑΣ STR. ΑΘΗΝΑ	(210)-3328817	(210)-3328678								
86, ΑΙΟΛΟΥ STR. ΑΘΗΝΑ	(210)-3341000	(210)-3228187								
NATIONAL SECURITIES S.A.				a		a	a	a		
66, ΛΕΩΦ. ΚΗΦΙΣΙΑΣ 66 (ΚΤΗΡΙΟ Α) ΜΑΡΟΥΣΙ	2107720000									
NUNTIUS BROKERAGE AND INVESTMENT SERVICES S.A				a						
6, ΔΡΑΓΑΤΣΑΝΙΟΥ 6 ΑΘΗΝΑ	2103350599									
ONE PLUS CAPITAL LIMITED				a	a					
, 75 PRODROMOU AVENUE NICOSIA 1307	35722873760									
OPTIMA BANK S.A.				a		a	a	a	a	
32, ΑΙΓΙΑΛΕΙΑΣ 32 & ΠΑΡΑΔΕΙΣΟΥ ΜΑΡΟΥΣΙ	2108173111									
PANTELAKIS SECURITIES S.A.				a		a	a	a		
57, ΕΘΝΙΚΗΣ ΑΝΤΙΣΤΑΣΕΩΣ 57, ΚΤΙΡΙΟ Β CHALANDRI	2106965000									
PEGASUS SECURITIES S.A				a			a			
17, ΒΑΛΑΩΡΙΤΟΥ 17 & ΑΜΕΡΙΚΗΣ ΑΘΗΝΑ	2103670700									
PIRAEUS BANK S.A.				a			a		a	
4, AMERIKIS ATHINA	+30 2103335000	210-3335079								
4, AMERIKIS STR ATHINA	(210)-3335918	(210)-3254207								
4, AMERIKIS STR. ΑΘΗΝΑ	(210)-3335000	(210)-3335079								
PIRAEUS SECURITIES S. A.				a		a	a	a		a
10, ΣΤΑΔΙΟΥ 10 ΑΘΗΝΑ	2103354100									
PROCHOICE SECURITIES LTD				a	a					
57, ΛΕΩΦ.ΣΠΥΡΟΥ ΚΥΠΡΙΑΝΟΥ 57, ΑΚΙΝΗΤΑ Φ	035724661192									
SHARELINK SECURITIES & FINANCIAL SERVICES LTD				a	a		a			
6, HOUSE-ΘΕΟΤΟΚΗ 6 ΜΕΓΑΡΟ ΕΛΛΗΝΑ	+357 22554200									
SOCIETE GENERALE S.A.				a	a		a			
, 17 COURS VALMY, CEDEX	+157290504									
SOLIDUS SECURITIES S.A				a			a			a
64, ΛΟΥΙΖΗΣ ΡΙΑΝΚΟΥΡ 64 ΑΘΗΝΑ	2106900600									
ST. EM. LAVRENTAKIS SECURITIES S.A.				a			a			
7-9, ΣΟΦΟΚΛΕΟΥΣ 7-9 ΑΘΗΝΑ	2103213336									
THE CYPRUS INVESTMENT & SECURITIES CORPORATION LTD				a	a					
154, ΛΕΩΦ. ΛΕΜΕΣΟΥ 154	0035722121700									
UBS EUROPE SE				a	a					
, OPERNTURM, BOCKENHEIMER LANDSTRASSE 2-4	496921790									
UBS LIMITED					a					
1, FINSBURY AVENUE LONDON	+44 2075687135									

## List of Stocks under Market Making operations

Securities	Stock Category
Market Maker	Start Market Making
<b>ALPHA ETF FTSE Athex Large Cap</b>	<b>Exchange Traded Funds (ETFs)</b>
ALPHA FINANCE INVESTMENT SERVICES S.A.	02/01/1900
NATIONAL SECURITIES S.A.	02/01/1900
<b>ADMIE (IPTO) HOLDING S.A. (CR)</b>	<b>Main Market</b>
HELLENIC AMERICAN SECURITIES S.A.	09/03/2020
PIRAEUS SECURITIES S. A.	29/06/2017
<b>ALPHA BANK (CR)</b>	<b>Main Market</b>
ALPHA FINANCE INVESTMENT SERVICES S.A.	29/02/2016
EUROBANK EQUITIES INVESTMENT FIRM S.A	22/10/2006
HELLENIC AMERICAN SECURITIES S.A.	25/07/2014
LEON DEPOLAS SECURITIES S.A.	04/01/2016
MERIT SECURITIES S.A	03/09/2012
NATIONAL SECURITIES S.A.	02/01/1900
PIRAEUS SECURITIES S. A.	28/05/2009
<b>AS COMPANY SA (CR)</b>	<b>Main Market</b>
EUROBANK EQUITIES INVESTMENT FIRM S.A	01/04/2019
<b>ATTICA BANK S.A. (CR)</b>	<b>Main Market</b>
EUROBANK EQUITIES INVESTMENT FIRM S.A	11/11/2019
EUROXX SECURITIES S.A.	22/01/2016
PIRAEUS SECURITIES S. A.	20/09/2017
<b>ATTICA HOLDINGS (CR)</b>	<b>Main Market</b>
HELLENIC AMERICAN SECURITIES S.A.	28/12/2017
<b>AUTOHELLAS SA (CR)</b>	<b>Main Market</b>
ALPHA FINANCE INVESTMENT SERVICES S.A.	01/07/2019
EUROXX SECURITIES S.A.	02/07/2018
<b>AVAX S.A. (CR)</b>	<b>Main Market</b>
EUROBANK EQUITIES INVESTMENT FIRM S.A	14/12/2015
<b>BRIQ PROPERTIES (CR)</b>	<b>Main Market</b>
EUROBANK EQUITIES INVESTMENT FIRM S.A	09/09/2019
<b>BYTE COMPUTER SA (CR)</b>	<b>Main Market</b>
MERIT SECURITIES S.A	04/08/2008
<b>CC HBC AG (CR)</b>	<b>Main Market</b>
NATIONAL SECURITIES S.A.	02/01/1900
PIRAEUS SECURITIES S. A.	04/05/2015
<b>CENERGY HOLDINGS (CB)</b>	<b>Main Market</b>
ALPHA FINANCE INVESTMENT SERVICES S.A.	02/01/2016
EUROBANK EQUITIES INVESTMENT FIRM S.A	02/01/2016
<b>CNL CAPITAL (CR)</b>	<b>Main Market</b>
MERIT SECURITIES S.A	01/10/2018
<b>EKTER SA (CR)</b>	<b>Main Market</b>
EUROBANK EQUITIES INVESTMENT FIRM S.A	16/10/2017
LEON DEPOLAS SECURITIES S.A.	21/05/2018
<b>ELASTRON (CR)</b>	<b>Main Market</b>
LEON DEPOLAS SECURITIES S.A.	20/02/2017
<b>ELLAKTOR (CR)</b>	<b>Main Market</b>
ALPHA FINANCE INVESTMENT SERVICES S.A.	18/03/2019
EUROXX SECURITIES S.A.	24/09/2018
NATIONAL SECURITIES S.A.	02/01/1900
PIRAEUS SECURITIES S. A.	22/10/2018
<b>ELTON SA (CR)</b>	<b>Main Market</b>
BETA SECURITIES S.A.	03/09/2012
LEON DEPOLAS SECURITIES S.A.	01/04/2019
<b>ELVALHALCOR (CR)</b>	<b>Main Market</b>
ALPHA FINANCE INVESTMENT SERVICES S.A.	07/05/2018
EUROBANK EQUITIES INVESTMENT FIRM S.A	07/05/2018
<b>EUROBANK HOLDINGS (CR)</b>	<b>Main Market</b>
ALPHA FINANCE INVESTMENT SERVICES S.A.	09/01/2006
EUROBANK EQUITIES INVESTMENT FIRM S.A	01/06/2012
HELLENIC AMERICAN SECURITIES S.A.	25/07/2014
LEON DEPOLAS SECURITIES S.A.	30/11/2018
MERIT SECURITIES S.A	06/11/2017
NATIONAL SECURITIES S.A.	02/01/1900
PIRAEUS SECURITIES S. A.	28/09/2009
<b>EUROPEAN RELIANCE INSUR. (CR)</b>	<b>Main Market</b>
EUROBANK EQUITIES INVESTMENT FIRM S.A	08/07/2019
PANTELAKIS SECURITIES S.A.	15/07/2019

## List of Stocks under Market Making operations

Securities	Stock Category
Market Maker	Start Market Making
<b>EYDAP S.A. (CR)</b>	Main Market
ALPHA FINANCE INVESTMENT SERVICES S.A.	27/01/2020
EUROBANK EQUITIES INVESTMENT FIRM S.A	10/06/2019
<b>FOURLIS (CR)</b>	Main Market
EUROBANK EQUITIES INVESTMENT FIRM S.A	01/12/2016
PIRAEUS SECURITIES S. A.	06/03/2017
<b>GEK TERNA (CR)</b>	Main Market
PIRAEUS SECURITIES S. A.	29/08/2019
<b>GR. SARANTIS S.A. (CR)</b>	Main Market
BETA SECURITIES S.A.	14/05/2012
EUROBANK EQUITIES INVESTMENT FIRM S.A	24/10/2016
<b>HELLENIC EXCHANGES-A.S.E. (CR)</b>	Main Market
HELLENIC AMERICAN SECURITIES S.A.	01/09/2014
NATIONAL SECURITIES S.A.	02/01/1900
PIRAEUS SECURITIES S. A.	04/05/2015
<b>HELLENIC PETROLEUM (CR)</b>	Main Market
HELLENIC AMERICAN SECURITIES S.A.	14/09/2015
PIRAEUS SECURITIES S. A.	20/03/2017
<b>IKTINOS HELLAS SA (CR)</b>	Main Market
ALPHA FINANCE INVESTMENT SERVICES S.A.	01/04/2019
EUROBANK EQUITIES INVESTMENT FIRM S.A	25/02/2019
NATIONAL SECURITIES S.A.	02/01/1900
<b>INTERCONTINENTAL (CR)</b>	Main Market
LEON DEPOLAS SECURITIES S.A.	03/06/2019
<b>INTRACOM HOLDINGS (CR)</b>	Main Market
LEON DEPOLAS SECURITIES S.A.	08/10/2018
<b>INTRALOT (CR)</b>	Main Market
EUROXX SECURITIES S.A.	12/06/2017
PIRAEUS SECURITIES S. A.	28/09/2009
<b>JUMBO SA (CR)</b>	Main Market
MERIT SECURITIES S.A	06/11/2017
PIRAEUS SECURITIES S. A.	06/03/2017
<b>KARAMOLEGOS SA (CR)</b>	Main Market
EUROXX SECURITIES S.A.	04/10/2019
<b>KLOUKINAS - LAPPAS SA (CR)</b>	Main Market
BETA SECURITIES S.A.	22/09/2014
<b>KRI-KRI S.A. (CR)</b>	Main Market
EUROBANK EQUITIES INVESTMENT FIRM S.A	07/05/2018
LEON DEPOLAS SECURITIES S.A.	16/01/2017
<b>LAMDA DEVELOPMENT SA (CR)</b>	Main Market
EUROBANK EQUITIES INVESTMENT FIRM S.A	08/12/2014
PANTELAKIS SECURITIES S.A.	06/11/2017
PIRAEUS SECURITIES S. A.	29/06/2017
<b>LAMPSA HOTEL SA (CR)</b>	Main Market
LEON DEPOLAS SECURITIES S.A.	16/01/2017
<b>MARFIN INVESTMENT GROUP (CR)</b>	Main Market
PIRAEUS SECURITIES S. A.	02/02/2009
<b>MLS MULTIMEDIA SA (CR)</b>	Main Market
PIRAEUS SECURITIES S. A.	01/08/2019
<b>MOTOR OIL (CR)</b>	Main Market
HELLENIC AMERICAN SECURITIES S.A.	01/09/2014
LEON DEPOLAS SECURITIES S.A.	01/04/2019
MERIT SECURITIES S.A	25/02/2019
NATIONAL SECURITIES S.A.	02/01/1900
PIRAEUS SECURITIES S. A.	04/05/2015
<b>MYTILINEOS (CR)</b>	Main Market
ALPHA FINANCE INVESTMENT SERVICES S.A.	15/04/2019
EUROBANK EQUITIES INVESTMENT FIRM S.A	20/09/2017
MERIT SECURITIES S.A	25/02/2019
NATIONAL SECURITIES S.A.	02/01/1900
PIRAEUS SECURITIES S. A.	04/05/2015

## List of Stocks under Market Making operations

Securities	Market Maker	Start Market Making	Stock Category
<b>NATIONAL BANK (CR)</b>			
	ALPHA FINANCE INVESTMENT SERVICES S.A.	09/01/2006	Main Market
	EUROBANK EQUITIES INVESTMENT FIRM S.A	22/10/2006	
	HELLENIC AMERICAN SECURITIES S.A.	25/07/2014	
	LEON DEPOLAS SECURITIES S.A.	20/05/2015	
	MERIT SECURITIES S.A	03/09/2012	
	NATIONAL SECURITIES S.A.	02/01/1900	
	PIRAEUS SECURITIES S. A.	08/09/2008	
<b>OPAP (CR)</b>			
	ALPHA FINANCE INVESTMENT SERVICES S.A.	09/01/2006	Main Market
	EUROBANK EQUITIES INVESTMENT FIRM S.A	22/10/2006	
	HELLENIC AMERICAN SECURITIES S.A.	25/07/2014	
	MERIT SECURITIES S.A	20/03/2017	
	NATIONAL SECURITIES S.A.	02/01/1900	
	PIRAEUS SECURITIES S. A.	04/05/2015	
<b>OTE (CR)</b>			
	ALPHA FINANCE INVESTMENT SERVICES S.A.	09/01/2006	Main Market
	EUROBANK EQUITIES INVESTMENT FIRM S.A	22/10/2006	
	HELLENIC AMERICAN SECURITIES S.A.	25/07/2014	
	LEON DEPOLAS SECURITIES S.A.	20/04/2015	
	MERIT SECURITIES S.A	20/03/2017	
	NATIONAL SECURITIES S.A.	02/01/1900	
	PIRAEUS SECURITIES S. A.	08/09/2008	
<b>P.P.A. S.A. (CR)</b>			
	EUROBANK EQUITIES INVESTMENT FIRM S.A	06/02/2019	Main Market
<b>PAPOUTSANIS (CR)</b>			
	ALPHA FINANCE INVESTMENT SERVICES S.A.	19/11/2018	Main Market
	BETA SECURITIES S.A.	25/11/2013	
<b>PETROPOULOS PETROS (CR)</b>			
	EUROBANK EQUITIES INVESTMENT FIRM S.A	01/04/2019	Main Market
	PANTELAKIS SECURITIES S.A.	16/03/2020	
<b>PIRAEUS BANK (CR)</b>			
	ALPHA FINANCE INVESTMENT SERVICES S.A.	15/04/2019	Main Market
	EUROBANK EQUITIES INVESTMENT FIRM S.A	22/10/2006	
	EUROXX SECURITIES S.A.	15/02/2016	
	HELLENIC AMERICAN SECURITIES S.A.	25/07/2014	
	LEON DEPOLAS SECURITIES S.A.	30/11/2018	
	MERIT SECURITIES S.A	16/09/2013	
	NATIONAL SECURITIES S.A.	02/01/1900	
	PIRAEUS SECURITIES S. A.	16/02/2009	
<b>PLAISIO COMPUTERS SA (CR)</b>			
	EUROBANK EQUITIES INVESTMENT FIRM S.A	02/03/2015	Main Market
<b>PPC (CR)</b>			
	ALPHA FINANCE INVESTMENT SERVICES S.A.	09/01/2006	Main Market
	EUROBANK EQUITIES INVESTMENT FIRM S.A	22/10/2006	
	HELLENIC AMERICAN SECURITIES S.A.	01/09/2014	
	MERIT SECURITIES S.A	06/11/2017	
	NATIONAL SECURITIES S.A.	02/01/1900	
	PIRAEUS SECURITIES S. A.	28/09/2009	
<b>PROFILE SA (CR)</b>			
	PANTELAKIS SECURITIES S.A.	01/07/2019	Main Market
<b>QUEST HOLDINGS (CR)</b>			
	BETA SECURITIES S.A.	26/03/2018	Main Market
	EUROBANK EQUITIES INVESTMENT FIRM S.A	28/01/2019	
<b>SPIROY AGRICULTURE SA (CR)</b>			
	EUROBANK EQUITIES INVESTMENT FIRM S.A	02/09/2019	Main Market
<b>TERNA ENERGY (CR)</b>			
	PIRAEUS SECURITIES S. A.	09/12/2019	Main Market
<b>THRACE PLASTICS SA (CR)</b>			
	ALPHA FINANCE INVESTMENT SERVICES S.A.	26/03/2018	Main Market
	EUROBANK EQUITIES INVESTMENT FIRM S.A	26/03/2018	
<b>TITAN CEMENT (CB)</b>			
	EUROBANK EQUITIES INVESTMENT FIRM S.A	06/11/2019	Main Market
<b>VIOHALCO SA/IV (CB)</b>			
	ALPHA FINANCE INVESTMENT SERVICES S.A.	11/03/2008	Main Market
	EUROBANK EQUITIES INVESTMENT FIRM S.A	04/03/2014	
	MERIT SECURITIES S.A	17/03/2014	



Underlying Asset				Derivatives Market													
Price max	Price min	Closing price	change	Delivery Month	Open price	Price max	Price min	Last price	Closing price	Last Bid	Last Ask	Fixing price*	Life high	Life low	Trades	Volume	Open Interest
<b>FTSE/Athex Large Cap</b>																	
1,543.49	1,505.53	1,539.34	2.25%	May 2020	1,505.00	1,541.00	1,502.50	1,536.75	1,536.75	---	---		1,541.00	---	288	1,078	3,567
				June 2020	1,521.50	1,540.00	1,510.50	1,534.00	1,534.00	---	---		1,540.00	---	9	51	270
				July 2020	---	---	---	---	1,512.25	---	---		---	---	---	---	---
				September 2020	---	---	---	---	1,517.50	---	---		---	---	---	---	---
				December 2020	---	---	---	---	1,525.25	---	---		---	---	---	---	---
				March 2021	---	---	---	---	1,532.75	---	---		---	---	---	---	---

(Trade Unit: 1 Index Point x 2E, Cash Settlement)

Derivatives notes

Fixing prices and final open positions can be retrieved from the following path <http://www.helex.gr/el/web/guest/statistics-end-of-day-derivatives>

Underlying Asset				Derivatives Market													
Price max	Price min	Closing price	change	Delivery Month	Open price	Price max	Price min	Last price	Closing price	Last Bid	Last Ask	Fixing price*	Life high	Life low	Trades	Volume	Open Interest
<b>ADMIE (IPTO) HOLDING S.A. (CR)</b> (Contract Size: 100 Securities, Physical Delivery)																	
2.2	2.09	2.15	1.66%	June 2020	2.16	2.20	2.10	2.13	2.13	---	---	---	2.75	---	71	377	2,965
				September 2020	---	---	---	---	2.13	---	---	---	---	---	---	---	---
				December 2020	---	---	---	---	2.14	---	---	---	---	---	---	---	---
				March 2021	---	---	---	---	2.15	---	---	---	---	---	---	---	---
<b>ALPHA BANK (CR)</b> (Contract Size: 100 Securities, Physical Delivery)																	
0.686	0.648	0.682	5.25%	June 2020	0.656	0.685	0.650	0.684	0.684	---	---	---	1.58	---	356	5,541	27,630
				September 2020	---	---	---	---	0.653	---	---	---	---	---	---	---	---
				December 2020	---	---	---	---	0.656	---	---	---	---	---	---	---	---
				March 2021	---	---	---	---	0.660	---	---	---	---	---	---	---	---
<b>ATTICA BANK S.A. (CR)</b> (Contract Size: 100 Securities, Physical Delivery)																	
0.2305	0.2195	0.23	2.22%	June 2020	0.220	0.220	0.220	0.220	0.220	---	---	---	0.271	---	1	10	474
				September 2020	---	---	---	---	0.227	---	---	---	---	---	---	---	---
				December 2020	---	---	---	---	0.228	---	---	---	---	---	---	---	---
				March 2021	---	---	---	---	0.229	---	---	---	---	---	---	---	---
<b>CC HBC AG (CR)</b> (Contract Size: 100 Securities, Physical Delivery)																	
24.29	22.91	23.82	3.56%	June 2020	23.10	24.00	23.10	23.90	23.90	---	---	---	28.10	---	28	135	252
				September 2020	---	---	---	---	23.18	---	---	---	35.15	---	---	---	2
				December 2020	---	---	---	---	23.30	---	---	---	---	---	---	---	---
				March 2021	---	---	---	---	23.42	---	---	---	---	---	---	---	---
<b>CENERGY HOLDINGS (CB)</b> (Contract Size: 100 Securities, Physical Delivery)																	
1.04	0.971	1.04	1.56%	June 2020	1.00	1.03	0.972	1.03	1.03	---	---	---	1.03	---	30	116	2,436
				September 2020	---	---	---	---	1.03	---	---	---	---	---	---	---	---
				December 2020	---	---	---	---	1.04	---	---	---	---	---	---	---	---
				March 2021	---	---	---	---	1.04	---	---	---	---	---	---	---	---
<b>ELLAKTOR (CR)</b> (Contract Size: 100 Securities, Physical Delivery)																	
0.951	0.895	0.919	-0.11%	June 2020	0.946	0.949	0.900	0.912	0.912	---	---	---	1.52	---	259	4,724	10,624
				September 2020	---	---	---	---	0.927	---	---	---	---	---	---	---	---
				December 2020	---	---	---	---	0.932	---	---	---	---	---	---	---	---
				March 2021	---	---	---	---	0.937	---	---	---	---	---	---	---	---
<b>EUROBANK HOLDINGS (CR)</b> (Contract Size: 100 Securities, Physical Delivery)																	
0.378	0.3565	0.3751	5.36%	June 2020	0.360	0.378	0.358	0.375	0.375	---	---	---	0.820	---	367	10,439	46,926
				September 2020	---	---	---	---	0.359	---	---	---	0.402	---	---	---	5
				December 2020	---	---	---	---	0.361	---	---	---	---	---	---	---	---
				March 2021	---	---	---	---	0.362	---	---	---	---	---	---	---	---

Derivatives notes

Fixing prices and final open positions can be retrieved from the following path <http://www.helex.gr/el/web/guest/statistics-end-of-day-derivatives>

Underlying Asset				Derivatives Market													
Price max	Price min	Closing price	change	Delivery Month	Open price	Price max	Price min	Last price	Closing price	Last Bid	Last Ask	Fixing price*	Life high	Life low	Trades	Volume	Open Interest
<b>EYDAP S.A. (CR)</b>				(Contract Size: 100 Securities, Physical Delivery)													
6.74	6.55	6.55	-1.50%	June 2020	6.61	6.61	6.61	6.61	6.61	---	---	---	6.99	---	1	2	119
				September 2020	---	---	---	---	6.70	---	---	---	---	---	---	---	---
				December 2020	---	---	---	---	6.74	---	---	---	---	---	---	---	---
				March 2021	---	---	---	---	6.77	---	---	---	---	---	---	---	---
<b>FOURLIS (CR)</b>				(Contract Size: 100 Securities, Physical Delivery)													
3.485	3.4	3.45	0.58%	June 2020	3.44	3.50	3.40	3.45	3.45	---	---	---	4.36	---	35	184	571
				September 2020	---	---	---	---	3.46	---	---	---	---	---	---	---	---
				December 2020	---	---	---	---	3.47	---	---	---	---	---	---	---	---
				March 2021	---	---	---	---	3.49	---	---	---	---	---	---	---	---
<b>GEK TERNA (CR)</b>				(Contract Size: 100 Securities, Physical Delivery)													
6.38	5.99	6.01	-3.22%	June 2020	6.20	6.31	5.98	6.04	6.04	---	---	---	7.26	---	96	256	2,618
				September 2020	---	---	---	---	6.26	---	---	---	---	---	---	---	---
				December 2020	---	---	---	---	6.29	---	---	---	---	---	---	---	---
				March 2021	---	---	---	---	6.32	---	---	---	---	---	---	---	---
<b>HELLENIC EXCHANGES-A.S.E. (CR)</b>				(Contract Size: 100 Securities, Physical Delivery)													
3.5	3.405	3.5	1.74%	June 2020	3.43	3.45	3.39	3.44	3.44	---	---	---	3.93	---	28	77	1,457
				September 2020	---	---	---	---	3.47	---	---	---	---	---	---	---	---
				December 2020	---	---	---	---	3.48	---	---	---	---	---	---	---	---
				March 2021	---	---	---	---	3.50	---	---	---	---	---	---	---	---
<b>HELLENIC PETROLEUM (CR)</b>				(Contract Size: 100 Securities, Physical Delivery)													
6.18	6.1	6.17	0.16%	June 2020	6.16	6.17	6.10	6.12	6.12	---	---	---	6.80	---	4	12	1,348
				September 2020	---	---	---	---	6.21	---	---	---	---	---	---	---	---
				December 2020	---	---	---	---	6.24	---	---	---	---	---	---	---	---
				March 2021	---	---	---	---	6.27	---	---	---	---	---	---	---	---
<b>INTRACOM HOLDINGS (CR)</b>				(Contract Size: 100 Securities, Physical Delivery)													
0.547	0.515	0.526	-2.41%	June 2020	0.549	0.549	0.520	0.520	0.520	---	---	---	0.560	---	8	113	1,707
				September 2020	---	---	---	---	0.543	---	---	---	---	---	---	---	---
				December 2020	---	---	---	---	0.546	---	---	---	---	---	---	---	---
				March 2021	---	---	---	---	0.549	---	---	---	---	---	---	---	---
<b>INTRALOT (CR)</b>				(Contract Size: 100 Securities, Physical Delivery)													
0.153	0.142	0.1498	3.03%	June 2020	0.151	0.155	0.145	0.155	0.155	---	---	---	0.180	---	11	99	1,138
				September 2020	---	---	---	---	0.147	---	---	---	---	---	---	---	---
				December 2020	---	---	---	---	0.147	---	---	---	---	---	---	---	---
				March 2021	---	---	---	---	0.148	---	---	---	---	---	---	---	---

Derivatives notes

Fixing prices and final open positions can be retrieved from the following path <http://www.helex.gr/el/web/guest/statistics-end-of-day-derivatives>

Underlying Asset				Derivatives Market													
Price max	Price min	Closing price	change	Delivery Month	Open price	Price max	Price min	Last price	Closing price	Last Bid	Last Ask	Fixing price*	Life high	Life low	Trades	Volume	Open Interest
<b>JUMBO SA (CR)</b>				(Contract Size: 100 Securities, Physical Delivery)													
14.2	13.75	14.12	2.69%	June 2020	13.82	14.15	13.82	14.11	14.11	---	---	---	16.30	---	66	150	479
				September 2020	---	---	---	---	13.86	---	---	---	---	---	---	---	---
				December 2020	---	---	---	---	13.93	---	---	---	---	---	---	---	---
				March 2021	---	---	---	---	14.00	---	---	---	---	---	---	---	---
<b>LAMDA DEVELOPMENT SA (CR)</b>				(Contract Size: 100 Securities, Physical Delivery)													
6.38	6.06	6.11	-2.24%	June 2020	6.26	6.37	6.07	6.09	6.09	---	---	---	7.22	---	67	127	881
				September 2020	---	---	---	---	6.30	---	---	---	---	---	---	---	---
				December 2020	---	---	---	---	6.33	---	---	---	---	---	---	---	---
				March 2021	---	---	---	---	6.36	---	---	---	---	---	---	---	---
<b>MARFIN INVESTMENT GROUP (CR)</b>				(Contract Size: 100 Securities, Physical Delivery)													
0.072	0.07	0.0718	2.87%	June 2020	0.071	0.073	0.070	0.072	0.072	---	---	---	0.133	---	50	1,135	42,106
				September 2020	---	---	---	---	0.070	---	---	---	---	---	---	---	---
				December 2020	---	---	---	---	0.071	---	---	---	---	---	---	---	---
				March 2021	---	---	---	---	0.071	---	---	---	---	---	---	---	---
<b>MOTOR OIL (CR)</b>				(Contract Size: 100 Securities, Physical Delivery)													
14.1	13.36	13.9	3.27%	June 2020	13.69	14.00	13.69	14.00	14.00	---	---	---	16.33	---	6	20	137
				September 2020	---	---	---	---	13.57	---	---	---	---	---	---	---	---
				December 2020	---	---	---	---	13.64	---	---	---	---	---	---	---	---
				March 2021	---	---	---	---	13.70	---	---	---	---	---	---	---	---
<b>MYTILINEOS (CR)</b>				(Contract Size: 100 Securities, Physical Delivery)													
7.175	6.99	7.04	0.57%	June 2020	7.13	7.19	7.00	7.06	7.06	---	---	---	9.00	---	90	356	4,043
				September 2020	---	---	---	---	7.06	---	---	---	---	---	---	---	---
				December 2020	---	---	---	---	7.09	---	---	---	---	---	---	---	---
				March 2021	---	---	---	---	7.13	---	---	---	---	---	---	---	---
<b>NATIONAL BANK (CR)</b>				(Contract Size: 100 Securities, Physical Delivery)													
1.29	1.2095	1.29	6.66%	June 2020	1.18	1.30	1.18	1.29	1.29	---	---	---	2.48	---	324	6,103	23,141
				September 2020	---	---	---	---	1.22	---	---	---	0.939	---	---	---	3
				December 2020	---	---	---	---	1.23	---	---	---	---	---	---	---	---
				March 2021	---	---	---	---	1.23	---	---	---	---	---	---	---	---
<b>OPAP (CR)</b>				(Contract Size: 100 Securities, Physical Delivery)													
8.05	7.7	8.04	1.00%	June 2020	7.98	8.05	7.70	8.04	8.04	---	---	---	8.99	---	127	540	1,863
				September 2020	---	---	---	---	8.02	---	---	---	6.15	---	---	---	2
				December 2020	---	---	---	---	8.06	---	---	---	---	---	---	---	---
				March 2021	---	---	---	---	8.10	---	---	---	---	---	---	---	---

Derivatives notes

Fixing prices and final open positions can be retrieved from the following path <http://www.helex.gr/el/web/guest/statistics-end-of-day-derivatives>

Underlying Asset				Derivatives Market													
Price max	Price min	Closing price	change	Delivery Month	Open price	Price max	Price min	Last price	Closing price	Last Bid	Last Ask	Fixing price*	Life high	Life low	Trades	Volume	Open Interest
<b>OTE (CR)</b>																	
(Contract Size: 100 Securities, Physical Delivery)																	
11.85	11.56	11.84	1.20%	June 2020	11.85	11.87	11.57	11.80	11.80	---	---	---	12.80	---	28	82	1,821
---	---	---	---	September 2020	---	---	---	---	11.79	---	---	---	11.01	---	---	---	1
---	---	---	---	December 2020	---	---	---	---	11.85	---	---	---	---	---	---	---	---
---	---	---	---	March 2021	---	---	---	---	11.91	---	---	---	---	---	---	---	---
<b>P.P.A. S.A. (CR)</b>																	
(Contract Size: 100 Securities, Physical Delivery)																	
17.5	17.08	17.32	0.12%	June 2020	17.25	17.33	17.25	17.26	17.26	---	---	---	19.60	---	4	18	161
---	---	---	---	September 2020	---	---	---	---	17.44	---	---	---	---	---	---	---	---
---	---	---	---	December 2020	---	---	---	---	17.53	---	---	---	---	---	---	---	---
---	---	---	---	March 2021	---	---	---	---	17.61	---	---	---	---	---	---	---	---
<b>PIRAEUS BANK (CR)</b>																	
(Contract Size: 100 Securities, Physical Delivery)																	
1.28	1.235	1.253	1.46%	June 2020	1.25	1.28	1.24	1.27	1.27	---	---	---	2.14	---	111	1,601	8,436
---	---	---	---	September 2020	---	---	---	---	1.24	---	---	---	---	---	---	---	---
---	---	---	---	December 2020	---	---	---	---	1.25	---	---	---	---	---	---	---	---
---	---	---	---	March 2021	---	---	---	---	1.26	---	---	---	---	---	---	---	---
<b>PPC (CR)</b>																	
(Contract Size: 100 Securities, Physical Delivery)																	
2.73	2.59	2.67	-1.48%	June 2020	2.70	2.73	2.61	2.68	2.68	---	---	---	3.85	---	144	1,253	7,634
---	---	---	---	September 2020	---	---	---	---	2.73	---	---	---	---	---	---	---	---
---	---	---	---	December 2020	---	---	---	---	2.75	---	---	---	---	---	---	---	---
---	---	---	---	March 2021	---	---	---	---	2.76	---	---	---	---	---	---	---	---
<b>TERNA ENERGY (CR)</b>																	
(Contract Size: 102 Securities, Physical Delivery)																	
8.4	8.22	8.33	-1.07%	June 2020	8.42	8.42	8.30	8.36	8.36	---	---	---	8.44	---	7	22	3,156
---	---	---	---	September 2020	---	---	---	---	8.49	---	---	---	---	---	---	---	---
---	---	---	---	December 2020	---	---	---	---	8.53	---	---	---	---	---	---	---	---
---	---	---	---	March 2021	---	---	---	---	8.57	---	---	---	---	---	---	---	---
<b>TITAN CEMENT (CB)</b>																	
(Contract Size: 100 Securities, Physical Delivery)																	
13.22	12.46	12.98	2.69%	June 2020	12.52	13.05	12.52	12.98	12.98	---	---	---	16.40	---	65	230	522
---	---	---	---	September 2020	---	---	---	---	12.74	---	---	---	---	---	---	---	---
---	---	---	---	December 2020	---	---	---	---	12.81	---	---	---	---	---	---	---	---
---	---	---	---	March 2021	---	---	---	---	12.87	---	---	---	---	---	---	---	---
<b>VIOHALCO SA/NV (CB)</b>																	
(Contract Size: 100 Securities, Physical Delivery)																	
2.395	2.19	2.38	2.81%	June 2020	2.34	2.37	2.22	2.37	2.37	---	---	---	2.37	---	66	285	2,534
---	---	---	---	September 2020	---	---	---	---	2.33	---	---	---	---	---	---	---	---
---	---	---	---	December 2020	---	---	---	---	2.35	---	---	---	---	---	---	---	---
---	---	---	---	March 2021	---	---	---	---	2.36	---	---	---	---	---	---	---	---

Derivatives notes

Fixing prices and final open positions can be retrieved from the following path <http://www.helex.gr/el/web/guest/statistics-end-of-day-derivatives>

## FTSE/Athex Large Cap

(Trade Unit: 1 Index Point x 2€ - Exercise Style: European, Cash Settlement)

Call Options														Put Options																			
Exercise Price	May 2020							June 2020							Other Months		May 2020							June 2020							Other Months		Exercise Price
	Open price	Price max	Price min	Last price	Closing price	Volume	Open Interest	Open price	Price max	Price min	Last price	Closing price	Volume	Open Interest	Volume	Open Interest	Open price	Price max	Price min	Last price	Closing price	Volume	Open Interest	Open price	Price max	Price min	Last price	Closing price	Volume	Open Interest	Volume	Open Interest	
1,050	0.00	0.00	0.00	-	450.00	-	-	0.00	0.00	0.00	-	454.00	-	-			0.00	0.00	0.00	-	0.02	-	-	0.00	0.00	0.00	-	0.42	-	-			1,050
1,075	0.00	0.00	0.00	-	425.00	-	-	0.00	0.00	0.00	-	429.00	-	-			0.00	0.00	0.00	-	0.05	-	-	0.00	0.00	0.00	-	0.68	-	-			1,075
1,100	0.00	0.00	0.00	-	400.00	-	-	0.00	0.00	0.00	-	405.00	-	-			0.00	0.00	0.00	-	0.01	-	-	0.00	0.00	0.00	-	1.10	-	-			1,100
1,125	0.00	0.00	0.00	-	375.00	-	-	0.00	0.00	0.00	-	380.00	-	-			0.00	0.00	0.00	-	0.02	-	-	0.00	0.00	0.00	-	1.70	-	-			1,125
1,150	0.00	0.00	0.00	-	350.00	-	-	0.00	0.00	0.00	-	356.00	-	-			0.00	0.00	0.00	-	0.05	-	-	0.00	0.00	0.00	-	2.50	-	-			1,150
1,175	0.00	0.00	0.00	-	325.00	-	-	0.00	0.00	0.00	-	332.00	-	-			0.00	0.00	0.00	-	0.12	-	-	0.00	0.00	0.00	-	3.60	-	-			1,175
1,200	0.00	0.00	0.00	-	300.00	-	-	0.00	0.00	0.00	-	309.00	-	-			0.00	0.00	0.00	-	0.26	-	-	0.00	0.00	0.00	-	5.20	-	-			1,200
1,225	0.00	0.00	0.00	-	276.00	-	-	0.00	0.00	0.00	-	286.00	-	-			0.00	0.00	0.00	-	0.52	-	-	0.00	0.00	0.00	-	7.20	-	-			1,225
1,250	0.00	0.00	0.00	-	251.00	-	20	0.00	0.00	0.00	-	264.00	-	-			0.00	0.00	0.00	-	0.99	-	-	0.00	0.00	0.00	-	9.70	-	-			1,250
1,275	0.00	0.00	0.00	-	227.00	-	200	0.00	0.00	0.00	-	242.00	-	-			0.00	0.00	0.00	-	1.80	-	20	0.00	0.00	0.00	-	13.00	-	-			1,275
1,300	0.00	0.00	0.00	-	203.00	-	120	0.00	0.00	0.00	-	221.00	-	-			0.00	0.00	0.00	-	3.00	-	20	0.00	0.00	0.00	-	17.00	-	-			1,300
1,325	0.00	0.00	0.00	-	180.00	-	40	0.00	0.00	0.00	-	201.00	-	-			0.00	0.00	0.00	-	4.90	-	20	0.00	0.00	0.00	-	21.75	-	-			1,325
1,350	0.00	0.00	0.00	-	158.00	-	20	0.00	0.00	0.00	-	182.00	-	-			0.00	0.00	0.00	-	7.60	-	60	0.00	0.00	0.00	-	27.75	-	-			1,350
1,375	0.00	0.00	0.00	-	137.00	-	20	0.00	0.00	0.00	-	164.00	-	-			0.00	0.00	0.00	-	11.50	-	60	0.00	0.00	0.00	-	34.50	-	-			1,375
1,400	0.00	0.00	0.00	-	117.00	-	1	0.00	0.00	0.00	-	147.00	-	60			0.00	0.00	0.00	-	16.50	-	23	0.00	0.00	0.00	-	42.25	-	40			1,400
1,425	0.00	0.00	0.00	-	98.50	-	22	0.00	0.00	0.00	-	131.00	-	40			0.00	0.00	0.00	-	23.25	-	20	0.00	0.00	0.00	-	51.50	-	20			1,425
1,450	103.00	103.00	103.00	103.00	103.00	1	40	0.00	0.00	0.00	-	116.00	-	-			0.00	103.00	0.00	-	31.50	-	42	0.00	0.00	0.00	-	61.50	-	40			1,450
1,475	0.00	0.00	0.00	-	67.00	-	20	103.00	103.00	103.00	103.00	103.00	20	20			0.00	0.00	0.00	-	41.75	-	20	0.00	0.00	0.00	-	72.50	-	80			1,475
1,500	0.00	0.00	0.00	-	54.00	-	100	0.00	0.00	0.00	-	90.00	-	-			0.00	0.00	0.00	-	53.50	-	35	0.00	0.00	0.00	-	85.00	-	20			1,500
1,525	0.00	0.00	0.00	-	43.00	-	2	0.00	0.00	0.00	-	78.50	-	1			49.50	0.00	49.50	49.50	49.50	20	20	0.00	0.00	0.00	-	98.50	-	20			1,525
1,550	38.00	41.00	38.00	41.00	41.00	2	66	66.50	66.50	66.00	66.00	66.00	60	20			0.00	41.00	0.00	-	83.00	-	-	0.00	0.00	0.00	-	113.00	-	-			1,550
1,575	35.00	35.00	30.00	30.00	30.00	2	1	0.00	0.00	0.00	-	59.00	-	-			0.00	35.00	0.00	-	100.00	-	-	0.00	0.00	0.00	-	129.00	-	-			1,575
1,600	29.00	29.00	20.00	20.00	20.00	2	3	0.00	0.00	0.00	-	50.50	-	-			0.00	29.00	0.00	-	119.00	-	-	0.00	0.00	0.00	-	146.00	-	-			1,600
1,625	15.00	15.00	15.00	15.00	15.00	1	-	0.00	0.00	0.00	-	43.25	-	-			0.00	15.00	0.00	-	139.00	-	-	0.00	0.00	0.00	-	163.00	-	-			1,625
1,650	12.00	12.00	12.00	12.00	12.00	1	-	0.00	0.00	0.00	-	37.00	-	-			0.00	12.00	0.00	-	160.00	-	-	0.00	0.00	0.00	-	182.00	-	-			1,650
1,675	0.00	0.00	0.00	-	7.70	-	-	0.00	0.00	0.00	-	31.25	-	-			0.00	0.00	0.00	-	182.00	-	-	0.00	0.00	0.00	-	201.00	-	-			1,675
1,700	0.00	0.00	0.00	-	5.50	-	-	0.00	0.00	0.00	-	26.50	-	-			0.00	0.00	0.00	-	205.00	-	-	0.00	0.00	0.00	-	221.00	-	-			1,700
1,725	0.00	0.00	0.00	-	3.80	-	-	0.00	0.00	0.00	-	22.25	-	-			0.00	0.00	0.00	-	228.00	-	-	0.00	0.00	0.00	-	242.00	-	-			1,725
1,750	0.00	0.00	0.00	-	2.60	-	-	0.00	0.00	0.00	-	18.50	-	-			0.00	0.00	0.00	-	252.00	-	-	0.00	0.00	0.00	-	263.00	-	-			1,750
1,775	0.00	0.00	0.00	-	1.80	-	-	0.00	0.00	0.00	-	15.50	-	-			0.00	0.00	0.00	-	276.00	-	-	0.00	0.00	0.00	-	285.00	-	-			1,775
1,800	0.00	0.00	0.00	-	1.20	-	-	0.00	0.00	0.00	-	12.75	-	-			0.00	0.00	0.00	-	300.00	-	-	0.00	0.00	0.00	-	307.00	-	-			1,800
1,825	0.00	0.00	0.00	-	0.80	-	-	0.00	0.00	0.00	-	10.50	-	-			0.00	0.00	0.00	-	325.00	-	-	0.00	0.00	0.00	-	330.00	-	-			1,825
1,850	0.00	0.00	0.00	-	0.52	-	-	0.00	0.00	0.00	-	8.70	-	-			0.00	0.00	0.00	-	350.00	-	-	0.00	0.00	0.00	-	353.00	-	-			1,850
1,875	0.00	0.00	0.00	-	0.33	-	-	0.00	0.00	0.00	-	7.10	-	-			0.00	0.00	0.00	-	374.00	-	-	0.00	0.00	0.00	-	376.00	-	-			1,875
1,900	0.00	0.00	0.00	-	0.21	-	-	0.00	0.00	0.00	-	5.80	-	-			0.00	0.00	0.00	-	399.00	-	-	0.00	0.00	0.00	-	400.00	-	-			1,900
1,925	0.00	0.00	0.00	-	0.13	-	-	0.00	0.00	0.00	-	4.70	-	-			0.00	0.00	0.00	-	424.00	-	-	0.00	0.00	0.00	-	424.00	-	-			1,925

FTSE/Athex Large Cap

(Trade Unit: 1 Index Point x 2€ - Exercise Style: European, Cash Settlement)

Exercise Price	Call Options														Put Options																		
	May 2020							June 2020							Other Months		May 2020							June 2020							Other Months		Exercise Price
	Open price	Price max	Price min	Last price	Closing price	Volume	Open Interest	Open price	Price max	Price min	Last price	Closing price	Volume	Open Interest	Volume	Open Interest	Open price	Price max	Price min	Last price	Closing price	Volume	Open Interest	Open price	Price max	Price min	Last price	Closing price	Volume	Open Interest	Volume	Open Interest	
1,950	0.00	0.00	0.00	-	0.08	-	-	0.00	0.00	0.00	-	3.80	-	-			0.00	0.00	0.00	-	449.00	-	-	0.00	0.00	0.00	-	448.00	-	-			
1,975	0.00	0.00	0.00	-	0.05	-	-	0.00	0.00	0.00	-	3.10	-	-			0.00	0.00	0.00	-	474.00	-	-	0.00	0.00	0.00	-	472.00	-	-			1,975
2,000	0.00	0.00	0.00	-	0.03	-	-	0.00	0.00	0.00	-	2.50	-	-			0.00	0.00	0.00	-	499.00	-	-	0.00	0.00	0.00	-	496.00	-	-			2,000
2,050	0.00	0.00	0.00	-	0.01	-	-	0.00	0.00	0.00	-	1.60	-	-			0.00	0.00	0.00	-	549.00	-	-	0.00	0.00	0.00	-	545.00	-	-			2,050
2,100	0.00	0.00	0.00	-	0.01	-	-	0.00	0.00	0.00	-	1.00	-	-			0.00	0.00	0.00	-	599.00	-	-	0.00	0.00	0.00	-	595.00	-	-			2,100
2,150	0.00	0.00	0.00	-	0.01	-	-	0.00	0.00	0.00	-	0.63	-	-			0.00	0.00	0.00	-	649.00	-	-	0.00	0.00	0.00	-	644.00	-	-			2,150
2,200	0.00	0.00	0.00	-	0.03	-	-	0.00	0.00	0.00	-	0.39	-	-			0.00	0.00	0.00	-	699.00	-	-	0.00	0.00	0.00	-	694.00	-	-			2,200
2,250	0.00	0.00	0.00	-	0.02	-	-	0.00	0.00	0.00	-	0.24	-	-			0.00	0.00	0.00	-	749.00	-	-	0.00	0.00	0.00	-	743.00	-	-			2,250
2,300	0.00	0.00	0.00	-	0.01	-	-	0.00	0.00	0.00	-	0.15	-	-			0.00	0.00	0.00	-	799.00	-	-	0.00	0.00	0.00	-	793.00	-	-			2,300
2,350	0.00	0.00	0.00	-	0.01	-	-	0.00	0.00	0.00	-	0.09	-	-			0.00	0.00	0.00	-	849.00	-	-	0.00	0.00	0.00	-	843.00	-	-			2,350
2,400	0.00	0.00	0.00	-	0.01	-	-	0.00	0.00	0.00	-	0.05	-	-			0.00	0.00	0.00	-	899.00	-	-	0.00	0.00	0.00	-	893.00	-	-			2,400
2,450	0.00	0.00	0.00	-	0.01	-	-	0.00	0.00	0.00	-	0.03	-	-			0.00	0.00	0.00	-	949.00	-	-	0.00	0.00	0.00	-	943.00	-	-			2,450
2,500	0.00	0.00	0.00	-	0.01	-	-	0.00	0.00	0.00	-	0.02	-	-			0.00	0.00	0.00	-	999.00	-	-	0.00	0.00	0.00	-	992.00	-	-			2,500
2,550	-	-	-	-	-	-	-	0.00	0.00	0.00	-	0.01	-	-			-	-	-	-	-	-	-	0.00	0.00	0.00	-	1,042.00	-	-			2,550
2,600	-	-	-	-	-	-	-	0.00	0.00	0.00	-	0.01	-	-			-	-	-	-	-	-	-	0.00	0.00	0.00	-	1,092.00	-	-			2,600
Totals:						9	675					80	141	0	0							20	340					0	220	0	0		
Number of Trades:						9						4		0								1						0		0			

ALPHA BANK (CR)

(Contract Size: 100 Securities, Exercise Style: American, Physical Delivery)

Call Options														Put Options																																	
Exercise Price	May 2020						June 2020						Other Months		Exercise Price	May 2020						June 2020						Other Months																			
	Open price	Price max	Price min	Last price	Closing price	Volume	Open Interest	Open price	Price max	Price min	Last price	Closing price	Volume	Open Interest		Volume	Open Interest	Open price	Price max	Price min	Last price	Closing price	Volume	Open Interest	Open price	Price max	Price min	Last price	Closing price	Volume	Open Interest	Volume	Open Interest														
0.300	0.000	0.000	0.000	0.348	-	-	0.000	0.000	0.000	0.349	-	-				0.000	0.000	0.000	0.001	-	-	0.000	0.000	0.000	0.001	-	-				0.003																
0.350	0.000	0.000	0.000	0.298	-	-	0.000	0.000	0.000	0.299	-	-				0.000	0.000	0.000	0.001	-	-	0.000	0.000	0.000	0.001	-	-				0.004																
0.400	0.000	0.000	0.000	0.249	-	-	0.000	0.000	0.000	0.250	-	-				0.000	0.000	0.000	0.001	-	-	0.000	0.000	0.000	0.001	-	-				0.004																
0.450	0.000	0.000	0.000	0.200	-	-	0.000	0.000	0.000	0.203	-	-				0.000	0.000	0.000	0.001	-	-	0.000	0.000	0.000	0.004	-	-				0.005																
0.500	0.000	0.000	0.000	0.154	-	-	0.000	0.000	0.000	0.160	-	-				0.000	0.000	0.000	0.005	-	-	0.000	0.000	0.000	0.010	-	-				0.005																
0.550	0.000	0.000	0.000	0.112	-	-	0.000	0.000	0.000	0.121	-	-				0.000	0.000	0.000	0.014	-	-	0.000	0.000	0.000	0.022	-	-				0.006																
0.600	0.000	0.000	0.000	0.078	-	-	0.000	0.000	0.000	0.089	-	40				0.000	0.000	0.000	0.029	-	-	0.000	0.000	0.000	0.039	-	-				0.006																
0.650	0.000	0.000	0.000	0.051	-	4	0.000	0.000	0.000	0.063	-	-				0.000	0.000	0.000	0.052	-	-	0.000	0.000	0.000	0.063	-	-				0.007																
0.700	0.000	0.000	0.000	0.032	-	110	0.000	0.000	0.000	0.044	-	-				0.000	0.000	0.000	0.083	-	-	0.000	0.000	0.000	0.094	-	-				0.007																
0.750	0.000	0.000	0.000	0.019	-	-	0.000	0.000	0.000	0.029	-	-				0.000	0.000	0.000	0.121	-	-	0.000	0.000	0.000	0.130	-	-				0.008																
0.800	0.000	0.000	0.000	0.011	-	-	0.000	0.000	0.000	0.019	-	-				0.000	0.000	0.000	0.162	-	-	0.000	0.000	0.000	0.169	-	-				0.008																
0.850	0.000	0.000	0.000	0.006	-	-	0.000	0.000	0.000	0.013	-	-				0.000	0.000	0.000	0.207	-	-	0.000	0.000	0.000	0.213	-	-				0.009																
0.900	0.000	0.000	0.000	0.003	-	-	0.000	0.000	0.000	0.008	-	-				0.000	0.000	0.000	0.255	-	-	0.000	0.000	0.000	0.258	-	-				0.009																
0.950	0.000	0.000	0.000	0.002	-	-	0.000	0.000	0.000	0.005	-	-				0.000	0.000	0.000	0.303	-	-	0.000	0.000	0.000	0.305	-	-				0.010																
1.000	0.000	0.000	0.000	0.001	-	-	0.000	0.000	0.000	0.003	-	-				0.000	0.000	0.000	0.352	-	-	0.000	0.000	0.000	0.354	-	-				0.010																
1.100	0.000	0.000	0.000	0.001	-	-	0.000	0.000	0.000	0.001	-	-				0.000	0.000	0.000	0.452	-	-	0.000	0.000	0.000	0.452	-	-				0.011																
1.200	0.000	0.000	0.000	0.001	-	-	0.000	0.000	0.000	0.003	-	-				0.000	0.000	0.000	0.552	-	-	0.000	0.000	0.000	0.552	-	-				0.012																
1.300	0.000	0.000	0.000	0.001	-	-	0.000	0.000	0.000	0.001	-	-				0.000	0.000	0.000	0.652	-	-	0.000	0.000	0.000	0.652	-	-				0.013																
1.400	0.000	0.000	0.000	0.001	-	-	0.000	0.000	0.000	0.001	-	-				0.000	0.000	0.000	0.752	-	-	0.000	0.000	0.000	0.752	-	-				0.014																
1.500	0.000	0.000	0.000	0.002	-	-	0.000	0.000	0.000	0.001	-	-				0.000	0.000	0.000	0.852	-	-	0.000	0.000	0.000	0.852	-	-				0.015																
1.600	0.000	0.000	0.000	0.001	-	-	0.000	0.000	0.000	0.001	-	-				0.000	0.000	0.000	0.952	-	-	0.000	0.000	0.000	0.952	-	-				0.016																
1.700	0.000	0.000	0.000	0.001	-	-	0.000	0.000	0.000	0.001	-	-				0.000	0.000	0.000	1.05	-	-	0.000	0.000	0.000	1.05	-	-				0.017																
1.800	0.000	0.000	0.000	0.002	-	-	0.000	0.000	0.000	0.001	-	-				0.000	0.000	0.000	1.15	-	-	0.000	0.000	0.000	1.15	-	-				0.018																
1.900	0.000	0.000	0.000	0.001	-	-	0.000	0.000	0.000	0.001	-	-				0.000	0.000	0.000	1.25	-	-	0.000	0.000	0.000	1.25	-	-				0.019																
2.000	0.000	0.000	0.000	0.002	-	-	0.000	0.000	0.000	0.001	-	-				0.000	0.000	0.000	1.35	-	-	0.000	0.000	0.000	1.35	-	-				0.020																
2.200	0.000	0.000	0.000	0.001	-	-	0.000	0.000	0.000	0.001	-	-				0.000	0.000	0.000	1.55	-	-	0.000	0.000	0.000	1.55	-	-				0.022																
2.400	0.000	0.000	0.000	0.001	-	-	0.000	0.000	0.000	0.001	-	-				0.000	0.000	0.000	1.75	-	-	0.000	0.000	0.000	1.75	-	-				0.024																
2.600					-	-	0.000	0.000	0.000	0.001	-	-									-	-	0.000	0.000	0.000	1.95	-	-				0.026															
2.800					-	-	0.000	0.000	0.000	0.001	-	-									-	-	0.000	0.000	0.000	2.15	-	-				0.028															
Totals:						0						114				0							40				0				0				0				0				0				0
Number of Trades:						0						0				0							0				0.00				0				0				0				0				



NATIONAL BANK (CR)

(Contract Size: 100 Securities, Exercise Style: American, Physical Delivery)

Call Options																Put Options																		
Exercise Price	May 2020							June 2020							Other Months		May 2020							June 2020							Other Months		Exercise Price	
	Open price	Price max	Price min	Last price	Closing price	Volume	Open Interest	Open price	Price max	Price min	Last price	Closing price	Volume	Open Interest	Volume	Open Interest	Open price	Price max	Price min	Last price	Closing price	Volume	Open Interest	Open price	Price max	Price min	Last price	Closing price	Volume	Open Interest	Volume	Open Interest		
0.600	0.000	0.000	0.000	0.611	-	-	0.000	0.000	0.000	0.612	-	-	0.000	0.000	0.000	0.000	0.000	0.000	0.001	-	-	0.000	0.000	0.000	0.001	-	-	0.000	0.000	0.000	0.001	-	-	0.006
0.650	0.000	0.000	0.000	0.561	-	-	0.000	0.000	0.000	0.562	-	-	0.000	0.000	0.000	0.001	-	-	0.000	0.000	0.000	0.001	-	-	0.000	0.000	0.000	0.001	-	-	0.007			
0.700	0.000	0.000	0.000	0.511	-	-	0.000	0.000	0.000	0.513	-	-	0.000	0.000	0.000	0.001	-	-	0.000	0.000	0.000	0.001	-	-	0.000	0.000	0.000	0.001	-	-	0.007			
0.750	0.000	0.000	0.000	0.461	-	-	0.000	0.000	0.000	0.465	-	-	0.000	0.000	0.000	0.001	-	-	0.000	0.000	0.000	0.001	-	-	0.000	0.000	0.000	0.003	-	-	0.008			
0.800	0.000	0.000	0.000	0.411	-	-	0.000	0.000	0.000	0.417	-	-	0.000	0.000	0.000	0.001	-	-	0.000	0.000	0.000	0.001	-	-	0.000	0.000	0.000	0.005	-	-	0.008			
0.850	0.000	0.000	0.000	0.361	-	-	0.000	0.000	0.000	0.372	-	-	0.000	0.000	0.000	0.003	-	-	0.000	0.000	0.000	0.009	-	-	0.000	0.000	0.000	0.009	-	-	0.009			
0.900	0.000	0.000	0.000	0.312	-	-	0.000	0.000	0.000	0.328	-	-	0.000	0.000	0.000	0.001	-	-	0.000	0.000	0.000	0.015	-	-	0.000	0.000	0.000	0.015	-	-	0.009			
0.950	0.000	0.000	0.000	0.264	-	-	0.000	0.000	0.000	0.287	-	-	0.000	0.000	0.000	0.004	-	-	0.000	0.000	0.000	0.024	-	-	0.000	0.000	0.000	0.024	-	-	0.010			
1.000	0.280	0.280	0.280	0.280	0.280	4	4	0.000	0.000	0.000	0.249	-	-	0.000	0.000	0.000	0.008	-	-	0.000	0.000	0.000	0.036	-	-	0.000	0.000	0.000	0.036	-	-	0.010		
1.100	0.000	0.000	0.000	0.138	-	-	0.000	0.000	0.000	0.182	-	-	0.000	0.000	0.000	0.027	-	-	0.000	0.000	0.000	0.069	-	-	0.000	0.000	0.000	0.069	-	-	0.011			
1.200	0.000	0.000	0.000	0.078	-	11	0.000	0.000	0.000	0.128	-	50	0.000	0.000	0.000	0.067	-	10	0.000	0.000	0.000	0.115	-	-	0.000	0.000	0.000	0.115	-	-	0.012			
1.300	0.000	0.000	0.000	0.039	-	110	0.000	0.000	0.000	0.087	-	-	0.000	0.000	0.000	0.128	-	-	0.000	0.000	0.000	0.174	-	-	0.000	0.000	0.000	0.174	-	-	0.013			
1.400	0.000	0.000	0.000	0.017	-	-	0.000	0.000	0.000	0.058	-	-	0.000	0.000	0.000	0.206	-	-	0.000	0.000	0.000	0.245	-	-	0.000	0.000	0.000	0.245	-	-	0.014			
1.500	0.000	0.000	0.000	0.007	-	30	0.000	0.000	0.000	0.038	-	-	0.000	0.000	0.000	0.296	-	-	0.000	0.000	0.000	0.324	-	-	0.000	0.000	0.000	0.324	-	-	0.015			
1.600	0.000	0.000	0.000	0.003	-	-	0.000	0.000	0.000	0.024	-	-	0.000	0.000	0.000	0.392	-	-	0.000	0.000	0.000	0.411	-	-	0.000	0.000	0.000	0.411	-	-	0.016			
1.700	0.000	0.000	0.000	0.001	-	-	0.000	0.000	0.000	0.015	-	-	0.000	0.000	0.000	0.490	-	-	0.000	0.000	0.000	0.502	-	-	0.000	0.000	0.000	0.502	-	-	0.017			
1.800	0.000	0.000	0.000	0.001	-	-	0.000	0.000	0.000	0.010	-	-	0.000	0.000	0.000	0.590	-	-	0.000	0.000	0.000	0.597	-	-	0.000	0.000	0.000	0.597	-	-	0.018			
1.900	0.000	0.000	0.000	0.001	-	-	0.000	0.000	0.000	0.006	-	-	0.000	0.000	0.000	0.690	-	-	0.000	0.000	0.000	0.693	-	-	0.000	0.000	0.000	0.693	-	-	0.019			
2.000	0.000	0.000	0.000	0.001	-	-	0.000	0.000	0.000	0.003	-	-	0.000	0.000	0.000	0.790	-	-	0.000	0.000	0.000	0.791	-	-	0.000	0.000	0.000	0.791	-	-	0.020			
2.200	0.000	0.000	0.000	0.002	-	-	0.000	0.000	0.000	0.001	-	-	0.000	0.000	0.000	0.990	-	-	0.000	0.000	0.000	0.990	-	-	0.000	0.000	0.000	0.990	-	-	0.022			
2.400	0.000	0.000	0.000	0.001	-	-	0.000	0.000	0.000	0.001	-	-	0.000	0.000	0.000	1.19	-	-	0.000	0.000	0.000	1.19	-	-	0.000	0.000	0.000	1.19	-	-	0.024			
2.600	0.000	0.000	0.000	0.001	-	-	0.000	0.000	0.000	0.001	-	-	0.000	0.000	0.000	1.39	-	-	0.000	0.000	0.000	1.39	-	-	0.000	0.000	0.000	1.39	-	-	0.026			
2.800	0.000	0.000	0.000	0.001	-	-	0.000	0.000	0.000	0.001	-	-	0.000	0.000	0.000	1.59	-	-	0.000	0.000	0.000	1.59	-	-	0.000	0.000	0.000	1.59	-	-	0.028			
3.000	0.000	0.000	0.000	0.002	-	-	0.000	0.000	0.000	0.001	-	-	0.000	0.000	0.000	1.79	-	-	0.000	0.000	0.000	1.79	-	-	0.000	0.000	0.000	1.79	-	-	0.030			
3.200	0.000	0.000	0.000	0.001	-	-	0.000	0.000	0.000	0.001	-	-	0.000	0.000	0.000	1.99	-	-	0.000	0.000	0.000	1.99	-	-	0.000	0.000	0.000	1.99	-	-	0.032			
3.400	0.000	0.000	0.000	0.001	-	-	0.000	0.000	0.000	0.002	-	-	0.000	0.000	0.000	2.19	-	-	0.000	0.000	0.000	2.19	-	-	0.000	0.000	0.000	2.19	-	-	0.034			
3.600	0.000	0.000	0.000	0.001	-	-	0.000	0.000	0.000	0.001	-	-	0.000	0.000	0.000	2.39	-	-	0.000	0.000	0.000	2.39	-	-	0.000	0.000	0.000	2.39	-	-	0.036			
3.800							0.000	0.000	0.000	0.001	-	-							0.000	0.000	0.000	2.59	-	-				2.59	-	-	0.038			
4.000							0.000	0.000	0.000	0.001	-	-							0.000	0.000	0.000	2.79	-	-				2.79	-	-	0.040			
4.400							0.000	0.000	0.000	0.001	-	-							0.000	0.000	0.000	3.19	-	-				3.19	-	-	0.044			
Totals:						4	155					0	50	0	0								4	10					0	279	0	0		
Number of Trades:						1						0		0									0.00						0		0			

OPAP (CR)

(Contract Size: 100 Securities, Exercise Style: American, Physical Delivery)

Call Options														Put Options																											
Exercise Price	May 2020						June 2020						Other Months		May 2020						June 2020						Other Months		Exercise Price												
	Open price	Price max	Price min	Last price	Closing price	Volume	Open Interest	Open price	Price max	Price min	Last price	Closing price	Volume	Open Interest	Volume	Open Interest	Open price	Price max	Price min	Last price	Closing price	Volume	Open Interest	Open price	Price max	Price min	Last price	Closing price		Volume	Open Interest	Volume	Open Interest								
4.000	0.000	0.000	0.000		3.96	-	-	0.000	0.000	0.000		3.97	-	-			0.000	0.000	0.000		0.001	-	-	0.000	0.000	0.000		0.001	-	-			0.040								
4.400	0.000	0.000	0.000		3.56	-	-	0.000	0.000	0.000		3.57	-	-			0.000	0.000	0.000		0.002	-	-	0.000	0.000	0.000		0.001	-	-			0.044								
4.800	0.000	0.000	0.000		3.16	-	-	0.000	0.000	0.000		3.18	-	-			0.000	0.000	0.000		0.001	-	-	0.000	0.000	0.000		0.002	-	-			0.048								
5.200	0.000	0.000	0.000		2.77	-	-	0.000	0.000	0.000		2.78	-	-			0.000	0.000	0.000		0.004	-	-	0.000	0.000	0.000		0.008	-	-			0.052								
5.600	0.000	0.000	0.000		2.37	-	-	0.000	0.000	0.000		2.40	-	-			0.000	0.000	0.000		0.001	-	5	0.000	0.000	0.000		0.021	-	-			0.056								
6.000	0.000	0.000	0.000		1.97	-	-	0.000	0.000	0.000		2.03	-	-			0.000	0.000	0.000		0.003	-	20	0.000	0.000	0.000		0.048	-	-			0.060								
6.400	0.000	0.000	0.000		1.58	-	-	0.000	0.000	0.000		1.68	-	-			0.000	0.000	0.000		0.015	-	45	0.000	0.000	0.000		0.099	-	-			0.064								
6.800	0.000	0.000	0.000		1.21	-	20	0.000	0.000	0.000		1.36	-	-			0.000	0.000	0.000		0.047	-	30	0.200	0.200	0.200	0.200	0.200	5	11			0.068								
7.200	0.000	0.000	0.000		0.881	-	20	0.000	0.000	0.000		1.08	-	20			0.000	0.000	0.000		0.114	-	-	0.000	0.000	0.000		0.296	-	-			0.072								
7.600	0.000	0.000	0.000		0.603	-	78	0.000	0.000	0.000		0.833	-	-			0.000	0.000	0.000		0.236	-	-	0.000	0.000	0.000		0.452	-	-			0.076								
8.000	0.301	0.301	0.301	0.301	0.301	5	45	0.000	0.000	0.000		0.630	-	-			0.000	0.000	0.000		0.418	-	-	0.000	0.000	0.000		0.648	-	-			0.080								
8.400	0.149	0.149	0.149	0.149	0.149	11	-	0.396	0.396	0.396	0.396	0.396	5	-			0.000	0.000	0.000		0.665	-	-	0.000	0.000	0.000		0.884	-	-			0.084								
8.800	0.000	0.000	0.000		0.130	-	-	0.301	0.301	0.301	0.301	0.301	5	-			0.000	0.000	0.000		0.962	-	-	0.000	0.000	0.000		1.16	-	-			0.088								
9.200	0.000	0.000	0.000		0.067	-	-	0.000	0.000	0.000		0.246	-	-			0.000	0.000	0.000		1.30	-	-	0.000	0.000	0.000		1.46	-	-			0.092								
9.600	0.000	0.000	0.000		0.034	-	-	0.000	0.000	0.000		0.172	-	-			0.000	0.000	0.000		1.67	-	-	0.000	0.000	0.000		1.79	-	-			0.096								
10.000	0.000	0.000	0.000		0.016	-	-	0.000	0.000	0.000		0.116	-	-			0.000	0.000	0.000		2.05	-	-	0.000	0.000	0.000		2.13	-	-			0.100								
11.000	0.000	0.000	0.000		0.002	-	-	0.000	0.000	0.000		0.044	-	-			0.000	0.000	0.000		3.04	-	-	0.000	0.000	0.000		3.07	-	-			0.110								
12.000	0.000	0.000	0.000		0.003	-	-	0.000	0.000	0.000		0.015	-	-			0.000	0.000	0.000		4.04	-	-	0.000	0.000	0.000		4.04	-	-			0.120								
13.000	0.000	0.000	0.000		0.001	-	-	0.000	0.000	0.000		0.005	-	-			0.000	0.000	0.000		5.04	-	-	0.000	0.000	0.000		5.04	-	-			0.130								
14.000	0.000	0.000	0.000		0.002	-	-	0.000	0.000	0.000		0.001	-	-			0.000	0.000	0.000		6.04	-	-	0.000	0.000	0.000		6.04	-	-			0.140								
15.000	0.000	0.000	0.000		0.002	-	-	0.000	0.000	0.000		0.001	-	-			0.000	0.000	0.000		7.04	-	-	0.000	0.000	0.000		7.04	-	-			0.150								
16.000	0.000	0.000	0.000		0.001	-	-	0.000	0.000	0.000		0.001	-	-			0.000	0.000	0.000		8.04	-	-	0.000	0.000	0.000		8.04	-	-			0.160								
17.000	0.000	0.000	0.000		0.001	-	-	0.000	0.000	0.000		0.001	-	-			0.000	0.000	0.000		9.04	-	-	0.000	0.000	0.000		9.04	-	-			0.170								
Totals:						16	163							10	20	0	0							16	100							5	22	0	0						
Number of Trades:						2							2							0							0.00							1							0

OTE (CR)

(Contract Size: 100 Securities, Exercise Style: American, Physical Delivery)

Exercise Price	Call Options														Put Options																				
	May 2020							June 2020							Other Months		May 2020							June 2020							Other Months		Exercise Price		
	Open price	Price max	Price min	Last price	Closing price	Volume	Open Interest	Open price	Price max	Price min	Last price	Closing price	Volume	Open Interest	Volume	Open Interest	Open price	Price max	Price min	Last price	Closing price	Volume	Open Interest	Open price	Price max	Price min	Last price	Closing price	Volume	Open Interest	Volume	Open Interest			
7.200	0.000	0.000	0.000		4.51	-	-	0.000	0.000	0.000		4.52	-	-			0.000	0.000	0.000		0.001	-	-	0.000	0.000	0.000		0.001	-	-				0.072	
7.600	0.000	0.000	0.000		4.11	-	-	0.000	0.000	0.000		4.12	-	-			0.000	0.000	0.000		0.004	-	-	0.000	0.000	0.000		0.002	-	-			0.076		
8.000	0.000	0.000	0.000		3.71	-	-	0.000	0.000	0.000		3.73	-	-			0.000	0.000	0.000		0.001	-	-	0.000	0.000	0.000		0.005	-	-			0.080		
8.400	0.000	0.000	0.000		3.31	-	-	0.000	0.000	0.000		3.34	-	-			0.000	0.000	0.000		0.001	-	-	0.000	0.000	0.000		0.013	-	-			0.084		
8.800	0.000	0.000	0.000		2.91	-	-	0.000	0.000	0.000		2.95	-	-			0.000	0.000	0.000		0.001	-	-	0.000	0.000	0.000		0.027	-	-			0.088		
9.200	0.000	0.000	0.000		2.51	-	-	0.000	0.000	0.000		2.58	-	-			0.000	0.000	0.000		0.003	-	-	0.000	0.000	0.000		0.053	-	-			0.092		
9.600	0.000	0.000	0.000		2.12	-	-	0.000	0.000	0.000		2.22	-	-			0.000	0.000	0.000		0.011	-	-	0.000	0.000	0.000		0.096	-	-			0.096		
10.000	0.000	0.000	0.000		1.74	-	-	0.000	0.000	0.000		1.89	-	-			0.000	0.000	0.000		0.031	-	27	0.000	0.000	0.000		0.161	-	-			0.100		
11.000	0.000	0.000	0.000		0.906	-	-	0.000	0.000	0.000		1.17	-	-			0.000	0.000	0.000		0.195	-	5	0.000	0.000	0.000		0.443	-	-			0.110		
12.000	0.000	0.000	0.000		0.358	-	-	0.000	0.000	0.000		0.661	-	-			0.000	0.000	0.000		0.647	-	-	0.000	0.000	0.000		0.929	-	-			0.120		
13.000	0.066	0.066	0.066	0.066	0.066	5	40	0.301	0.301	0.301	0.301	0.301	5	-			0.000	0.000	0.000		1.40	-	-	0.000	0.000	0.000		1.60	-	-			0.130		
14.000	0.000	0.000	0.000		0.022	-	-	0.000	0.000	0.000		0.156	-	5			0.000	0.000	0.000		2.31	-	-	0.000	0.000	0.000		2.43	-	-			0.140		
15.000	0.000	0.000	0.000		0.004	-	-	0.000	0.000	0.000		0.067	-	-			0.000	0.000	0.000		3.30	-	-	0.000	0.000	0.000		3.34	-	-			0.150		
16.000	0.000	0.000	0.000		0.001	-	-	0.000	0.000	0.000		0.027	-	-			0.000	0.000	0.000		4.30	-	-	0.000	0.000	0.000		4.31	-	-			0.160		
17.000	0.000	0.000	0.000		0.001	-	-	0.000	0.000	0.000		0.009	-	-			0.000	0.000	0.000		5.30	-	-	0.000	0.000	0.000		5.30	-	-			0.170		
18.000	0.000	0.000	0.000		0.001	-	-	0.000	0.000	0.000		0.003	-	-			0.000	0.000	0.000		6.30	-	-	0.000	0.000	0.000		6.30	-	-			0.180		
19.000	0.000	0.000	0.000		0.001	-	-	0.000	0.000	0.000		0.001	-	-			0.000	0.000	0.000		7.30	-	-	0.000	0.000	0.000		7.30	-	-			0.190		
Totals:						5	40							5	5	0	0							5	32							0	0	0	0
Number of Trades:						1							1	0							0.00							0	0						

PIRAEUS BANK (CR)

(Contract Size: 100 Securities, Exercise Style: American, Physical Delivery)

Call Options														Put Options																		
May 2020							June 2020							Other Months		May 2020							June 2020							Other Months		Exercise Price
Open price	Price max	Price min	Last price	Closing price	Volume	Open Interest	Open price	Price max	Price min	Last price	Closing price	Volume	Open Interest	Volume	Open Interest	Open price	Price max	Price min	Last price	Closing price	Volume	Open Interest	Open price	Price max	Price min	Last price	Closing price	Volume	Open Interest	Volume	Open Interest	
0.700	0.000	0.000	0.000	0.541	-	-	0.000	0.000	0.000	0.543	-	-			0.000	0.000	0.000	0.001	-	-			0.000	0.000	0.000	0.001	-	-			0.007	
0.750	0.000	0.000	0.000	0.491	-	-	0.000	0.000	0.000	0.494	-	-			0.000	0.000	0.000	0.001	-	-			0.000	0.000	0.000	0.002	-	-			0.008	
0.800	0.000	0.000	0.000	0.441	-	-	0.000	0.000	0.000	0.446	-	-			0.000	0.000	0.000	0.002	-	-			0.000	0.000	0.000	0.004	-	-			0.008	
0.850	0.000	0.000	0.000	0.391	-	-	0.000	0.000	0.000	0.400	-	-			0.000	0.000	0.000	0.001	-	-			0.000	0.000	0.000	0.007	-	-			0.009	
0.900	0.000	0.000	0.000	0.342	-	-	0.000	0.000	0.000	0.355	-	-			0.000	0.000	0.000	0.001	-	-			0.000	0.000	0.000	0.012	-	-			0.009	
0.950	0.000	0.000	0.000	0.294	-	-	0.000	0.000	0.000	0.312	-	-			0.000	0.000	0.000	0.003	-	-			0.000	0.000	0.000	0.020	-	-			0.010	
1.000	0.000	0.000	0.000	0.247	-	-	0.000	0.000	0.000	0.272	-	-			0.000	0.000	0.000	0.006	-	-			0.000	0.000	0.000	0.029	-	-			0.010	
1.100	0.000	0.000	0.000	0.163	-	-	0.000	0.000	0.000	0.202	-	-			0.000	0.000	0.000	0.022	-	-			0.000	0.000	0.000	0.059	-	-			0.011	
1.200	0.000	0.000	0.000	0.097	-	-	0.000	0.000	0.000	0.145	-	50			0.000	0.000	0.000	0.056	-	-			0.000	0.000	0.000	0.102	-	-			0.012	
1.300	0.000	0.000	0.000	0.052	-	-	0.000	0.000	0.000	0.101	-	-			0.000	0.000	0.000	0.111	-	-			0.000	0.000	0.000	0.157	-	-			0.013	
1.400	0.000	0.000	0.000	0.025	-	160	0.000	0.000	0.000	0.068	-	-			0.000	0.000	0.000	0.184	-	-			0.000	0.000	0.000	0.225	-	-			0.014	
1.500	0.000	0.000	0.000	0.011	-	-	0.000	0.000	0.000	0.045	-	-			0.000	0.000	0.000	0.270	-	-			0.000	0.000	0.000	0.302	-	-			0.015	
1.600	0.000	0.000	0.000	0.004	-	-	0.000	0.000	0.000	0.029	-	-			0.000	0.000	0.000	0.363	-	-			0.000	0.000	0.000	0.386	-	-			0.016	
1.700	0.000	0.000	0.000	0.002	-	-	0.000	0.000	0.000	0.019	-	-			0.000	0.000	0.000	0.461	-	-			0.000	0.000	0.000	0.475	-	-			0.017	
1.800	0.000	0.000	0.000	0.001	-	-	0.000	0.000	0.000	0.012	-	-			0.000	0.000	0.000	0.560	-	-			0.000	0.000	0.000	0.568	-	-			0.018	
1.900	0.000	0.000	0.000	0.001	-	-	0.000	0.000	0.000	0.007	-	-			0.000	0.000	0.000	0.660	-	-			0.000	0.000	0.000	0.664	-	-			0.019	
2.000	0.000	0.000	0.000	0.001	-	-	0.000	0.000	0.000	0.004	-	-			0.000	0.000	0.000	0.760	-	-			0.000	0.000	0.000	0.762	-	-			0.020	
2.200	0.000	0.000	0.000	0.001	-	-	0.000	0.000	0.000	0.001	-	-			0.000	0.000	0.000	0.960	-	-			0.000	0.000	0.000	0.960	-	-			0.022	
2.400	0.000	0.000	0.000	0.001	-	-	0.000	0.000	0.000	0.001	-	-			0.000	0.000	0.000	1.16	-	-			0.000	0.000	0.000	1.16	-	-			0.024	
2.600	0.000	0.000	0.000	0.001	-	-	0.000	0.000	0.000	0.001	-	-			0.000	0.000	0.000	1.36	-	-			0.000	0.000	0.000	1.36	-	-			0.026	
2.800	0.000	0.000	0.000	0.002	-	-	0.000	0.000	0.000	0.001	-	-			0.000	0.000	0.000	1.56	-	-			0.000	0.000	0.000	1.56	-	-			0.028	
3.000	0.000	0.000	0.000	0.001	-	-	0.000	0.000	0.000	0.001	-	-			0.000	0.000	0.000	1.76	-	-			0.000	0.000	0.000	1.76	-	-			0.030	
3.200	0.000	0.000	0.000	0.001	-	-	0.000	0.000	0.000	0.001	-	-			0.000	0.000	0.000	1.96	-	-			0.000	0.000	0.000	1.96	-	-			0.032	
3.400	0.000	0.000	0.000	0.001	-	-	0.000	0.000	0.000	0.001	-	-			0.000	0.000	0.000	2.16	-	-			0.000	0.000	0.000	2.16	-	-			0.034	
3.600	0.000	0.000	0.000	0.008	-	-	0.000	0.000	0.000	0.001	-	-			0.000	0.000	0.000	2.36	-	-			0.000	0.000	0.000	2.36	-	-			0.036	
3.800	0.000	0.000	0.000	0.004	-	-	0.000	0.000	0.000	0.001	-	-			0.000	0.000	0.000	2.56	-	-			0.000	0.000	0.000	2.56	-	-			0.038	
4.000					-	-	0.000	0.000	0.000	0.007	-	-							-	-			0.000	0.000	0.000	2.76	-	-			0.040	
4.400					-	-	0.000	0.000	0.000	0.002	-	-							-	-			0.000	0.000	0.000	3.16	-	-			0.044	
4.800					-	-	0.000	0.000	0.000	0.001	-	-							-	-			0.000	0.000	0.000	3.56	-	-			0.048	
Totals:					0	160					0	50	0	0					0	0						0	0	0	0			
Number of Trades:					0						0		0						0.00								0		0			

PPC (CR)

(Contract Size: 100 Securities, Exercise Style: American, Physical Delivery)

Call Options																Put Options															
Exercise Price	May 2020						June 2020						Other Months		May 2020						June 2020						Other Months		Exercise Price		
	Open price	Price max	Price min	Last price	Closing price	Volume	Open Interest	Open price	Price max	Price min	Last price	Closing price	Volume	Open Interest	Volume	Open Interest	Open price	Price max	Price min	Last price	Closing price	Volume	Open Interest	Open price	Price max	Price min	Last price	Closing price		Volume	Open Interest
1.000	0.000	0.000	0.000	1.71	-	-	0.000	0.000	0.000	1.71	-	-				0.000	0.000	0.000	0.013	-	-	0.000	0.000	0.000	0.001	-	-				0.010
1.100	0.000	0.000	0.000	1.61	-	-	0.000	0.000	0.000	1.61	-	-				0.000	0.000	0.000	0.001	-	-	0.000	0.000	0.000	0.001	-	-				0.011
1.200	0.000	0.000	0.000	1.51	-	-	0.000	0.000	0.000	1.51	-	-				0.000	0.000	0.000	0.001	-	-	0.000	0.000	0.000	0.001	-	-				0.012
1.300	0.000	0.000	0.000	1.41	-	-	0.000	0.000	0.000	1.41	-	-				0.000	0.000	0.000	0.002	-	-	0.000	0.000	0.000	0.001	-	-				0.013
1.400	0.000	0.000	0.000	1.31	-	-	0.000	0.000	0.000	1.32	-	-				0.000	0.000	0.000	0.001	-	-	0.000	0.000	0.000	0.001	-	-				0.014
1.500	0.000	0.000	0.000	1.21	-	-	0.000	0.000	0.000	1.22	-	-				0.000	0.000	0.000	0.001	-	-	0.000	0.000	0.000	0.002	-	-				0.015
1.600	0.000	0.000	0.000	1.11	-	-	0.000	0.000	0.000	1.12	-	-				0.000	0.000	0.000	0.001	-	-	0.000	0.000	0.000	0.004	-	-				0.016
1.700	0.000	0.000	0.000	1.01	-	-	0.000	0.000	0.000	1.02	-	-				0.000	0.000	0.000	0.002	-	-	0.000	0.000	0.000	0.009	-	-				0.017
1.800	0.000	0.000	0.000	0.912	-	-	0.000	0.000	0.000	0.930	-	-				0.000	0.000	0.000	0.001	-	-	0.000	0.000	0.000	0.015	-	-				0.018
1.900	0.000	0.000	0.000	0.813	-	-	0.000	0.000	0.000	0.840	-	-				0.000	0.000	0.000	0.001	-	-	0.000	0.000	0.000	0.025	-	-				0.019
2.000	0.000	0.000	0.000	0.715	-	-	0.000	0.000	0.000	0.753	-	-				0.000	0.000	0.000	0.003	-	-	0.000	0.000	0.000	0.037	-	-				0.020
2.200	0.000	0.000	0.000	0.528	-	1	0.000	0.000	0.000	0.595	-	-				0.000	0.000	0.000	0.016	-	-	0.000	0.000	0.000	0.078	-	-				0.022
2.400	0.000	0.000	0.000	0.362	-	-	0.000	0.000	0.000	0.458	-	-				0.000	0.000	0.000	0.049	-	-	0.000	0.000	0.000	0.141	-	-				0.024
2.600	0.000	0.000	0.000	0.227	-	-	0.000	0.000	0.000	0.344	-	-				0.000	0.000	0.000	0.115	-	-	0.000	0.000	0.000	0.227	-	-				0.026
2.800	0.000	0.000	0.000	0.132	-	12	0.000	0.000	0.000	0.253	-	-				0.000	0.000	0.000	0.219	-	-	0.000	0.000	0.000	0.335	-	-				0.028
3.000	0.000	0.000	0.000	0.070	-	-	0.000	0.000	0.000	0.182	-	-				0.000	0.000	0.000	0.357	-	-	0.000	0.000	0.000	0.464	-	-				0.030
3.200	0.000	0.000	0.000	0.034	-	-	0.000	0.000	0.000	0.128	-	-				0.000	0.000	0.000	0.522	-	-	0.000	0.000	0.000	0.610	-	-				0.032
3.400	0.000	0.000	0.000	0.015	-	-	0.000	0.000	0.000	0.088	-	-				0.000	0.000	0.000	0.703	-	-	0.000	0.000	0.000	0.770	-	-				0.034
3.600	0.000	0.000	0.000	0.007	-	-	0.000	0.000	0.000	0.061	-	-				0.000	0.000	0.000	0.895	-	-	0.000	0.000	0.000	0.943	-	-				0.036
3.800	0.000	0.000	0.000	0.003	-	-	0.000	0.000	0.000	0.042	-	-				0.000	0.000	0.000	1.09	-	-	0.000	0.000	0.000	1.12	-	-				0.038
4.000	0.000	0.000	0.000	0.001	-	-	0.000	0.000	0.000	0.028	-	-				0.000	0.000	0.000	1.29	-	-	0.000	0.000	0.000	1.31	-	-				0.040
4.400	0.000	0.000	0.000	0.001	-	-	0.000	0.000	0.000	0.012	-	-				0.000	0.000	0.000	1.69	-	-	0.000	0.000	0.000	1.70	-	-				0.044
4.800	0.000	0.000	0.000	0.001	-	-	0.000	0.000	0.000	0.005	-	-				0.000	0.000	0.000	2.09	-	-	0.000	0.000	0.000	2.09	-	-				0.048
5.200	0.000	0.000	0.000	0.003	-	-	0.000	0.000	0.000	0.002	-	-				0.000	0.000	0.000	2.49	-	-	0.000	0.000	0.000	2.49	-	-				0.052
5.600	0.000	0.000	0.000	0.002	-	-	0.000	0.000	0.000	0.001	-	-				0.000	0.000	0.000	2.89	-	-	0.000	0.000	0.000	2.89	-	-				0.056
6.000	0.000	0.000	0.000	0.001	-	-	0.000	0.000	0.000	0.001	-	-				0.000	0.000	0.000	3.29	-	-	0.000	0.000	0.000	3.29	-	-				0.060
6.400							0.000	0.000	0.000	0.001	-	-																			0.064
Totals:						0	13						0	0																	0
Number of Trades:						0							0																		0

Lending Products	Underlying Title	Open Interest[5]	Multilateral Transactions[1]				Bilateral Transactions[2]		Stock Borrowing through OTC (volume)[3]
			Volume(Offered)	Average Weighted	Transactions volume	Average Weighted	Transactions Volume	Average Weighted	Transactions Volume
ADMIEBOR	ADMIE (IPTO) HOLDING S.A. (CR)	22,334	---	---	---	---	---	157,344	
AEGNBOR	AEGEAN AIRLINES (CR)	3,266	---	---	---	---	---	49,074	
ALPHABOR	ALPHA BANK (CR)	3,589	---	---	---	4,105	3.00%	39,593,661	
ALMYBOR	ALUMIL (CR)	---	---	---	---	---	---	---	
TATTBOR	ATTICA BANK S.A. (CR)	14,603	---	---	---	---	---	370	
EEEBOR	CC HBC AG (CR)	3,765	---	---	---	---	---	70,546	
CENERBOR	CENERGY HOLDINGS (CB)	400	---	---	---	---	---	---	
ELLAKTORBOR	ELLAKTOR (CR)	---	---	---	---	---	---	292,898	
EUROBBOR	EUROBANK HOLDINGS (CR)	---	---	---	---	5,850	3.00%	55,654,752	
EYDAPBOR	EYDAP S.A. (CR)	---	---	---	---	---	---	232,781	
FFGRPBOR	FOLLI FOLLIE (CR)	---	---	---	---	---	---	1,120,847	
FOYRKBOR	FOURLIS (CR)	1,091	---	---	---	---	---	23,892	
GEKTERNABOR	GEK TERNA (CR)	5,800	---	---	---	---	---	35,193	
SARBOR	GR. SARANTIS S.A. (CR)	---	---	---	---	---	---	22,112	
EXAEBOR	HELLENIC EXCHANGES-A.S.E. (CR)	94,500	---	---	---	---	---	163,165	
ELPEBOR	HELLENIC PETROLEUM (CR)	3,000	---	---	---	---	---	68,217	
INTRKBOR	INTRACOM HOLDINGS (CR)	2,218	---	---	---	---	---	---	
INLOTBOR	INTRALOT (CR)	---	---	---	---	---	---	104,512	
BELABOR	JUMBO SA (CR)	19,488	---	---	---	---	---	140,098	
LAMDABOR	LAMDA DEVELOPMENT SA (CR)	930	---	---	---	2,500	0.01%	41,118	
MIGBOR	MARFIN INVESTMENT GROUP (CR)	---	---	---	---	---	---	794,474	
MOHBOR	MOTOR OIL (CR)	5,900	---	---	---	---	---	10,420	
MYTILBOR	MYTILINEOS (CR)	6,800	---	---	---	---	---	73,342	
ETEBOR	NATIONAL BANK (CR)	31,129	---	---	---	---	---	9,683,988	
OPAPBOR	OPAP (CR)	7,456	---	---	---	---	---	1,307,899	
HTOBOR	OTE (CR)	11,484	---	---	---	---	---	535,504	
PPABOR	P.P.A. S.A. (CR)	250	---	---	---	---	---	2,901	
TPEIRBOR	PIRAEUS BANK (CR)	23,679	---	---	---	150	3.00%	18,937,986	
PLAISBOR	PLAISIO COMPUTERS SA (CR)	---	---	---	---	---	---	4,000	
PPCBOR	PPC (CR)	---	---	---	---	---	---	5,942,694	
QUALBOR	QUALITY & RELIABILITY SA (CR)	---	---	---	---	---	---	---	

## Stock Lending Notes

[1] - Multilateral contracts Lending or Borrowing as per Methods 8-1, 8-2 and 8-3-3 (According to ATHEX BoD Resolution No.17)

[2] - Bilateral Contracts Lending or Borrowing as per Methods 8-3-1 and 8-3-2 (According to ATHEX BoD Resolution No.20 )

[3] - The information concerning OTC Stock Borrowing Transactions is based on the statements of the Dematerialised Securities System (DSS) operators involved and refers to volumes that have been registered up until the previous working day.

[4] - Average Price (Volume weighted)

[5] - The Data concerning Open Interest before the start of trading session

Lending Products	Underlying Title	Open Interest[5]	Multilateral Transactions[1]				Bilateral Transactions[2]		Stock Borrowing through OTC (volume)[3]
			Volume(Offered)	Average Weighted	Transactions volume	Average Weighted	Transactions Volume	Average Weighted	Transactions Volume
TENERGYBOR	TERNA ENERGY (CR)	750	---	---	---	---	---	---	55,391
TITCBOR	TITAN CEMENT (CB)	600	---	---	---	---	---	---	188,110
VIOBOR	VIOHALCO SA/NV (CB)	400	---	---	---	---	---	---	---

## Stock Lending Notes

[1] - Multilateral contracts Lending or Borrowing as per Methods 8-1, 8-2 and 8-3-3 (According to ATHEX BoD Resolution No.17)

[2] - Bilateral Contracts Lending or Borrowing as per Methods 8-3-1 and 8-3-2 (According to ATHEX BoD Resolution No.20 )

[3] - The information concerning OTC Stock Borrowing Transactions is based on the statements of the Dematerialised Securities System (DSS) operators involved and refers to volumes that have been registered up until the previous working day.

[4] - Average Price (Volume weighted)

[5] - The Data concerning Open Interest before the start of trading session

## Sectors codification for listed companies

12003 -	ETF	10101010	Computer Services
10101015	Software	10102030	Computer Hardware
15101010	Telecommunications Equipment	15102015	Telecommunications Services
20101010	Health Care Facilities	20101025	Health Care Services
20102010	Medical Equipment	20103015	Pharmaceuticals
30101010	Banks	30202000	Diversified Financial Services
30202010	Asset Managers & Custodians	30202015	Investment Services
30302010	Full Line Insurance	30302015	Insurance Brokers
35101010	Real Estate Holding and Development	35101015	Real Estate Services
35102000	Diversified REITs	35102030	Office REITs
40201040	Rental & Leasing Services: Consumer	40202010	Home Construction
40202015	Household Furnishings	40202020	Household Appliance
40203040	Electronic Entertainment	40203045	Toys
40204020	Clothing & Accessories	40301010	Entertainment
40301030	Publishing	40301035	Radio & TV Broadcasters
40401010	Diversified Retailers	40401020	Apparel Retailers
40401025	Home Improvement Retailers	40401030	Specialty Retailers
40501010	Airlines	40501015	Travel & Tourism
40501020	Casinos & Gambling	40501025	Hotels & Motels
45101015	Distillers & Vintners	45101020	Soft Drinks
45102010	Farming Fishing Ranching & Plantations	45102020	Food Products
45103010	Tobacco	45201010	Food Retailers & Wholesalers
45201020	Personal Products	50101010	Construction
50101030	Cement	50101035	Building Materials: Other
50202010	Electrical Components	50203000	Diversified Industrials
50203015	Plastics	50203030	Containers & Packaging
50204000	Machinery: Industrial	50204020	Machinery: Construction & Handling
50205010	Industrial Suppliers	50205020	Back Office Support HR & Consulting
50205030	Forms & Bulk Printing Services	50206015	Commercial Vehicles & Parts
50206030	Marine Transportation	50206060	Transportation Services
55101000	Diversified Materials	55101020	Textile Products
55102000	General Mining	55102010	Iron & Steel
55102015	Metal Fabricating	55102035	Aluminum
60101000	Integrated Oil & Gas	60101020	Oil Refining and Marketing
65101010	Alternative Electricity	65101015	Conventional Electricity
65102030	Water		





**ATHEX**  
Athens Stock Exchange

Λεωφ. Αθηνών 110 104 42 Αθήνα  
110, Athinon Ave. GR 104 42 Athens  
tel. (+30)210-33.66.800, fax (+30)210-33.66.101  
[www.athexgroup.gr](http://www.athexgroup.gr)