



ATHEXGROUP
Athens Exchange Group

Daily Official List

Hellenic Exchanges – Athens Stock Exchange S.A.

Thursday, 15 October, 2015
Year: 136 Trading Day No: 171



Disclaimer:

Hellenic Exchanges-Athens Exchange endeavours to ensure that the data and other material ("Information") presented on the Daily Official List are accurate and complete, but it is not liable for any errors or omissions of data or /and for the accuracy, credibility, updating and completeness of the aforesaid information nor it has any liability arising directly or indirectly from the use of the above Information.

The Company is not liable for the accuracy of the data included in listed companies' announcements. Only the sender of such an announcement is fully and solely liable for any infringement of third party's rights from the content of such announcement. All contents of the Daily Official List are provided only for information purposes and do not constitute investment advice or solicitation to invest in securities or other products listed for trading on the Exchange.

You acknowledge and agree that the Company is the owner of any property rights related to any Information appearing on the Daily Official List including intellectual property rights copyright, trademarks, etc.

The above data are a property of the Hellenic Exchanges-Athens Exchange and are copyright protected. Users are forbidden to reproduce, modify, copy, sale, transmit or redistribute, by all reproduction means and methods, part or the whole of the above data, without reference to their source.

The commercial exploitation of these data is, also, forbidden by third parties. Hellenic Exchanges-Athens Exchange does not carry any responsibility, direct or indirect, derived from usage or accidental alteration of the above data when used by third parties.

Hellenic Exchanges – Athens Stock Exchange S.A.

110 Athinon Ave., 10442 Athens, Tel: (210) 33.66.800, Fax: (210) 32.13.938

www.athex.gr

Thessalonica Stock Exchange Center (T.S.E.C)

16-18 Katouni Str., Thessalonica 546 25 Tel: (2310) 567.667, Fax: (2310) 530.545

Athex Members Guarantee Fund

14-16 Fidiou Str., Athens 106 78, Tel: (210) 33.04.682, Fax: (210) 33.04.155

Hellenic Republic Capital Market Commission

1 Kolokotroni Str. & 1 Stadiou Str., Athens 10562 Tel: (210) 33.77.100 Fax: (210) 33.77.173

Table of Contents

Section 1: Statistical Figures of Securities, Derivatives and Lending

Summary of Markets

Athex Indices

Analytic Figures for Athex Market's Boards and Categories

Trading Details by Athex Sectors and Financial Instruments (ETFs)

Top 10 best & worst performing Shares

Derivatives Summary

Section 2: Analytic Figures of Shares Transactions

Analytic Figures of Shares Transactions

Shares' Notes

Section 3: Figures of Securities Transactions

Securities Blocks Details

Shares Rights Details

Stock Borrowing

Shares Forced Sales

Forced Sales Registered Shares

Exchange Traded Funds (ETFs) Characteristics

Section 5: Bonds traded in Fixed Income Assets Market

Corporate Bonds

Government Bonds

Treasury Bills & Zero Coupon Government Bonds

Government Bonds Traded with the Open Outcry Method

State Banks Bonds

Section 6: Additional Infos

Athex & ATHEXClear Members List

List of Stocks under Market Making operations

Section 7: Derivatives Market Analytic Figures

Index Futures

Stock Futures

Index Options

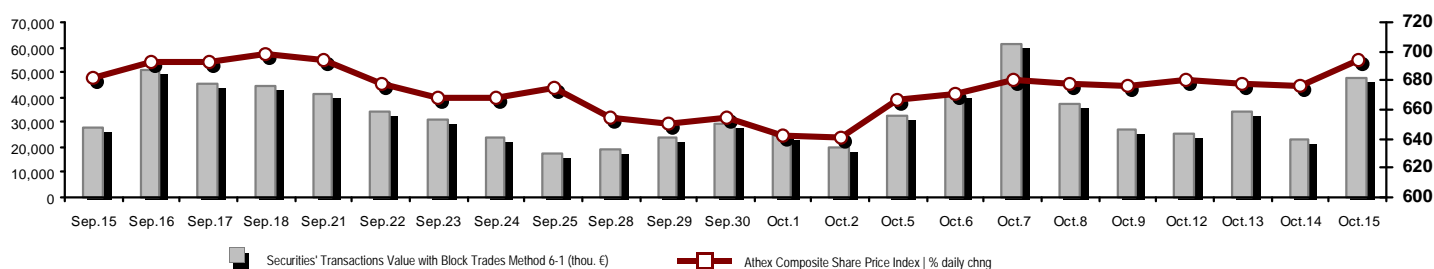
Stock Options

Stock Lending Analytic Figures

Appendix A: Sectors codification for listed companies

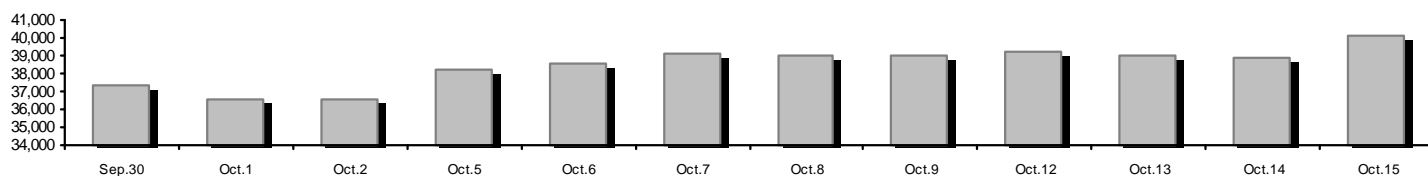
Summary of Markets

Athex Composite Share Price Index vs Shares and Derivatives Transactions Value

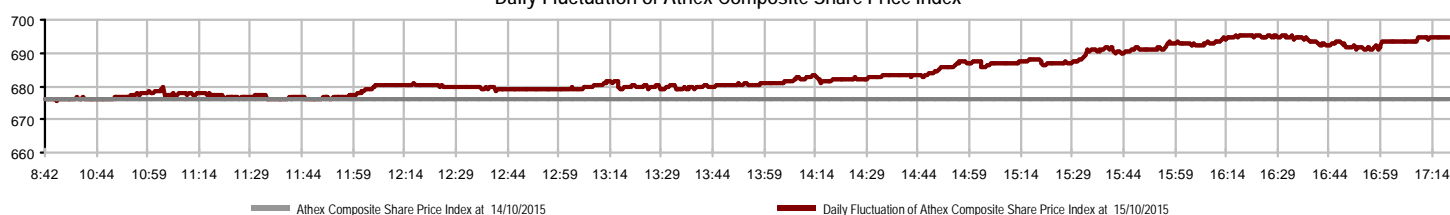


Athex Capitalisation (mill. €) **: 40,157.69	Derivatives Total Open Interest: 223,588
Daily change: mill. € %: 1,243.30 3.19%	in Index Futures % daily chng: 12,428 8.56%
Yearly Avg Capitalisation: mill. € % chng prev year Avg: 44,632.91 -35.56%	in Stock Futures % daily chng: 205,072 -15.84%
Athex Composite Share Price Index % daily chng: 694.48 2.71%	in Index Options % daily chng: 5,613 -0.90%
Athex Composite Share Price Index Capitalisation (mill. €): 36,923.78	in Stock Options % daily chng: 475 0.00%
Daily change (mill. €): 1,227.58	
Securities' Transactions Value with Block Trades Method 6-1 (48,124.19	Derivatives Contracts Volume: 80,280
Daily change: thou. € %: 24,668.04 105.17%	Daily change: pieces %: 37,408 87.26%
YtD Avg Trans. Value: thou. € % chng prev year Avg: 80,882.49 -36.34%	YtD Avg Derivatives Contracts % chng prev year Avg: 78,798 43.76%
Blocks Transactions Value of Method 6-1 (thou. €): 8,030.43	Derivatives Trades Number: 2,649
Blocks Transactions Value of Method 6-2 & 6-3 (thou. €): 0.00	Daily change: number %: 1,533 137.37%
Bonds Transactions Value (thou. €): 0.00	YtD Avg Derivatives Trades number % chng prev year Avg: 3,750 -10.19%
Securities' Transactions Volume (thou. Pieces): 196,918.28	Lending Total Open Interest: 9,963,157
Daily change: thou. pieces %: 78,619.21 66.46%	Daily change: pieces %: 21,011 0.21%
YtD Avg Volume: thou. pieces % chng prev year Avg: 172,946.10 82.03%	Lending Volume (Multilateral/Bilateral): 39,021
Blocks Transactions Volume of Method 6-1 (thou. Pieces): 936.25	Daily change: pieces %: 25,575 190.21%
Blocks Transactions Volume of Method 6-2 & 6-3 (thou. Pieces): 0.00	Multilateral Lending: 39,021
Bonds Transactions Volume (thou. pieces): 0.00	Bilateral Lending: 0
Securities' Trades Number: 17,844	Lending Trades Number: 59
Daily change: number %: 8,544 91.87%	Daily change: thou. € %: 54 1080.00%
YtD Avg Derivatives Trades number % chng prev year Avg: 28,156 -2.52%	Multilateral Lending Trades Number: 59
Number of Blocks Method 6-1: 8	Bilateral Lending Trades Number: 0
Number of Blocks Method 6-2 & 6-3: 0	
Number of Bonds Transactions: 0	

Athex Capitalisation (mill. €) **



Daily Fluctuation of Athex Composite Share Price Index



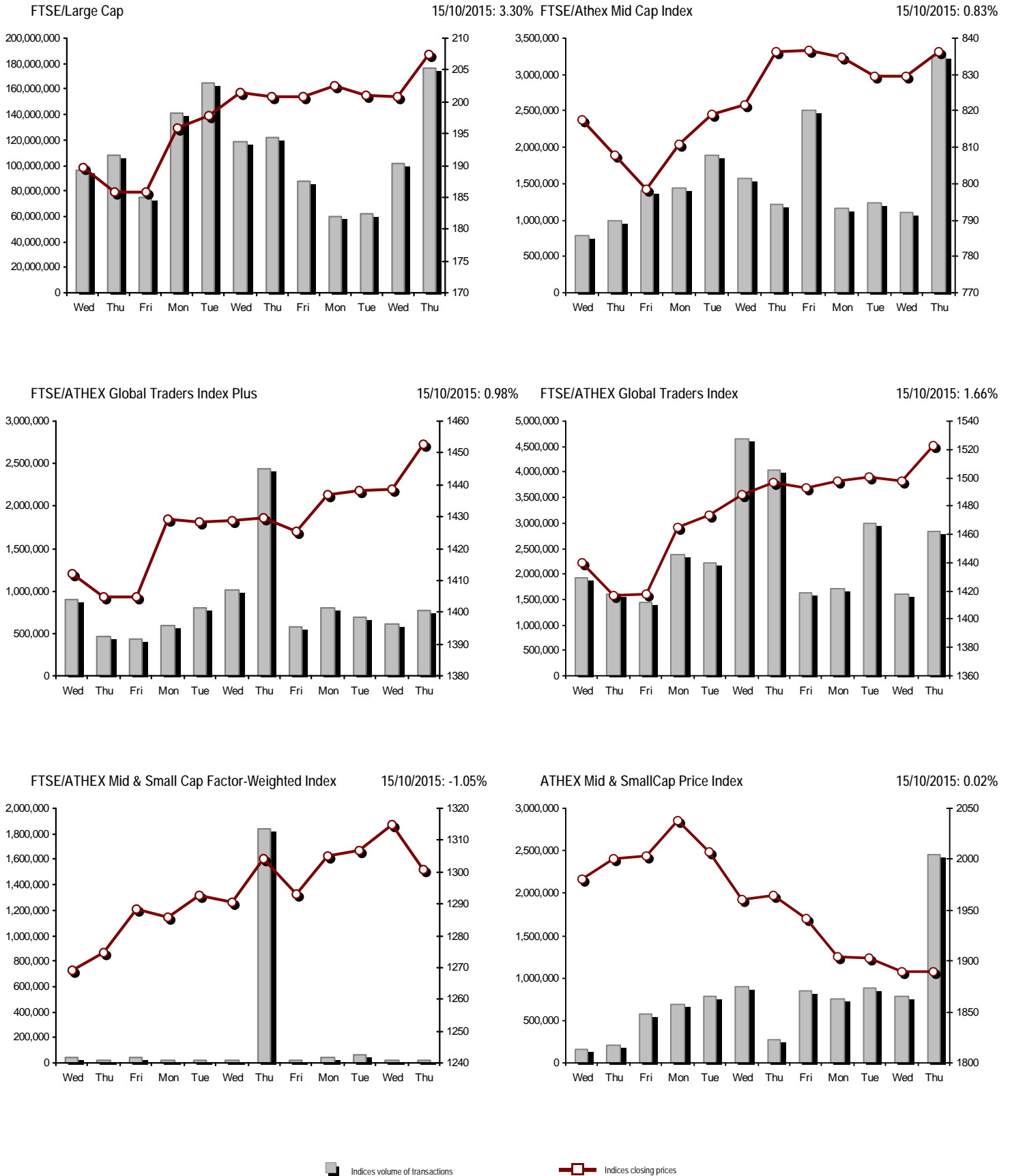
Athex Indices

Index name	15/10/2015	14/10/2015	pts.	%	Min	Max	Year min	Year max	Year change
Athex Composite Share Price Index	694.48 #	676.13	18.35	2.71%	675.81	695.38	562.87	945.81	-15.94% €
FTSE/Athex Large Cap	207.50 #	200.87	6.63	3.30%	200.58	207.85	161.85	283.37	-21.66% €
FTSE/ATHEX Custom Capped	687.62 €	689.99	-2.37	-0.34%			565.58	956.79	-21.08% €
FTSE/ATHEX Custom Capped - USD	563.78 #	562.64	1.14	0.20%			469.38	777.68	-25.42% €
FTSE/Athex Mid Cap Index	836.43 #	829.52	6.91	0.83%	823.96	842.90	705.04	984.77	8.20% #
FTSE/ATHEX-CSE Banking Index	175.56 #	154.12	21.44	13.91%	150.45	178.73	117.83	774.70	-75.88% €
FTSE/ATHEX Global Traders Index Plus	1,452.90 #	1,438.73	14.17	0.98%	1,437.28	1,454.97	1,220.07	1,604.84	13.25% #
FTSE/ATHEX Global Traders Index	1,522.39 #	1,497.48	24.91	1.66%	1,496.82	1,524.73	1,143.50	1,698.65	5.83% #
FTSE/ATHEX Mid & Small Cap Factor-Weighted Ind	1,300.96 €	1,314.79	-13.83	-1.05%	1,300.75	1,315.09	1,076.89	1,317.45	18.69% #
Greece & Turkey 30 Price Index	510.94 #	500.72	10.22	2.04%	510.91	515.60	416.41	768.95	-24.85% €
ATHEX Mid & SmallCap Price Index	1,890.18 #	1,889.72	0.46	0.02%	1,863.61	1,908.99	1,863.61	2,635.74	-22.52% €
FTSE/Athex Market Index	505.72 #	490.07	15.65	3.19%	489.33	506.58	396.31	685.04	-20.50% €
FTSE Med Index	5,094.95 €	5,174.33	-79.38	-1.53%			4,930.94	6,221.67	1.15% #
Athex Composite Index Total Return Index	1,032.58 #	1,005.29	27.29	2.71%	1,004.81	1,033.92	835.68	1,385.07	-14.50% €
FTSE/Athex Large Cap Total Return	286.26 #	277.12	9.14	3.30%			224.51	382.72	-20.33% €
FTSE/ATHEX Large Cap Net Total Return	854.62 #	827.29	27.33	3.30%	826.11	856.03	665.08	1,147.63	-20.13% €
FTSE/ATHEX Custom Capped Total Return	737.23 €	739.78	-2.55	-0.34%			604.83	1,008.59	-19.59% €
FTSE/ATHEX Custom Capped - USD Total Return	604.46 #	603.23	1.23	0.20%			501.95	819.78	-24.01% €
FTSE/Athex Mid Cap Total Return	1,076.24 #	1,067.35	8.89	0.83%			908.00	1,231.75	9.49% #
FTSE/ATHEX-CSE Banking Total Return Index	163.70 #	143.71	19.99	13.91%			112.10	708.30	-75.90% €
Greece & Turkey 30 Total Return Index	620.71 #	614.65	6.06	0.99%			533.87	919.96	-24.59% €
Hellenic Mid & Small Cap Index	825.96 #	813.92	12.04	1.48%	812.56	827.96	617.89	994.59	7.37% #
FTSE/Athex Banks	231.96 #	203.63	28.33	13.91%	198.78	236.14	155.68	1,023.60	-75.88% €
FTSE/Athex Insurance	1,527.82 ~	1,527.82	0.00	0.00%	1,527.82	1,527.82	1,222.25	1,780.70	4.32% #
FTSE/Athex Financial Services	968.61 #	927.12	41.49	4.48%	920.48	974.25	652.25	1,400.60	-3.29% €
FTSE/Athex Industrial Goods & Services	2,183.98 #	2,158.41	25.57	1.18%	2,137.53	2,185.01	1,649.24	2,660.41	11.76% #
FTSE/Athex Retail	2,631.70 #	2,617.07	14.63	0.56%	2,616.98	2,647.48	2,173.75	4,531.02	-30.78% €
FTSE/ATHEX Real Estate	2,743.17 €	2,777.28	-34.11	-1.23%	2,690.17	2,777.28	1,918.09	2,800.26	20.22% #
FTSE/Athex Personal & Household Goods	4,386.91 #	4,318.06	68.85	1.59%	4,296.82	4,442.79	2,841.14	5,680.33	-3.64% €
FTSE/Athex Food & Beverage	7,717.83 #	7,523.99	193.84	2.58%	7,520.38	7,732.73	5,066.70	8,330.10	31.75% #
FTSE/Athex Basic Resources	2,127.23 #	2,058.40	68.83	3.34%	2,058.40	2,127.23	1,753.11	2,916.96	10.32% #
FTSE/Athex Construction & Materials	2,268.76 #	2,250.91	17.85	0.79%	2,230.02	2,287.07	1,676.30	2,705.46	3.84% #
FTSE/Athex Oil & Gas	2,751.86 #	2,671.13	80.73	3.02%	2,671.13	2,751.86	1,618.74	2,853.14	51.63% #
FTSE/Athex Chemicals	6,667.11 €	6,715.50	-48.39	-0.72%	6,667.11	6,715.50	4,784.62	7,561.34	30.15% #
FTSE/Athex Travel & Leisure	1,515.40 #	1,476.17	39.23	2.66%	1,476.17	1,538.17	1,043.25	1,741.96	-1.16% €
FTSE/Athex Technology	634.21 #	630.06	4.15	0.66%	627.72	639.34	561.10	786.22	-12.65% €
FTSE/Athex Telecommunications	2,436.02 #	2,380.97	55.05	2.31%	2,361.70	2,449.79	1,582.73	2,606.68	-2.75% €
FTSE/Athex Utilities	2,072.64 #	2,035.01	37.63	1.85%	2,023.87	2,091.36	1,405.61	2,830.02	-1.23% €
FTSE/Athex Health Care	107.06 ~	107.06	0.00	0.00%	103.10	108.65	70.58	163.37	-25.83% €
Athex All Share Index	141.13 #	136.74	4.40	3.22%	141.13	141.13	114.55	196.00	-24.10% €
Hellenic Corporate Bond Index	92.50 #	92.01	0.49	0.53%			72.78	94.45	-1.46% €
Hellenic Corporate Bond Price Index	87.60 #	87.14	0.46	0.53%			69.59	92.77	-5.31% €

Note 1: Greece & Turkey 30 Pr data is the indicative at 17:20, whereas FTSE/ATHEX Custom Capped, FTSE/ATHEX Custom Capped - USD, FTSE/ATHEX Custom Capped TR, FTSE/ATHEX Custom Capped - USD TR, FTSE/Med 100 & Greece & Turkey 30 Rt., Hellenic Corporate Bond Price Index, Hellenic Corporate Bond Index closing prices refer to the previous trading day of 13/10/2015.

Note 2: The Hellenic Mid & Small Cap Index is a Customized index calculated by the Athens Exchange.

Athex Indices



Analytic Figures for Athex Market's Boards and Categories

	Total Traded Securities	Main Market	Low Dispersion	Other Categories (*)	Exchange Traded Funds (ETFs)	Warrants
Totals	103	84	6	7	3	3
Gain / Lose / Same:	68 / 20 / 15	56 / 18 / 10	3 / 1 / 2	3 / 1 / 3	3 / 0 / 0	3 / 0 / 0
Athex Capitalisation (mill. €) **	40,157.69	38,421.16	1,474.97	261.56		
Daily Average Trans/ons Value(thou.€)	80,882.49	79,402.15	45.41	54.55	38.67	1,435.00
Transactions Value	48,124.19	47,861.24	29.00	6.78	11.05	216.11
Main Board:	40,093.77	39,830.82	29.00	6.78	11.05	216.11
Blocks Board 6_2_3:	8,030.43	8,030.43	0.00	0.00	0.00	0.00
Forced Sales Board:	0.00	0.00	0.00	0.00	0.00	0.00
Special Terms Board:	0.00	0.00	0.00	0.00	0.00	0.00
Daily Average Transactions Volume	172,946,097	164,252,174	43,545	204,111	13,750	8,560,986
Transactions Volume	196,918,280	180,503,736	3,675	113,392	5,284	16,292,193
Main Board:	195,982,032	179,567,488	3,675	113,392	5,284	16,292,193
Blocks Board 6_2_3:	936,248	936,248	0	0	0	0
Forced Sales Board:	0	0	0	0	0	0
Special Terms Board:	0	0	0	0	0	0
Daily Average Number of Trades	28,156	26,763	29	62	6	1,297
Number of Trades	17,844	16,964	25	34	7	814
Main Board:	17,836	16,956	25	34	7	814
Blocks Board 6_2_3:	8	8	0	0	0	0
Forced Sales Board:	0	0	0	0	0	0
Special Terms Board:	0	0	0	0	0	0

(*) Summarised Transactions figures for Under Deletion and Under Supervision Categories. (**) The Market Capitalization of the Companies that belong in the Under Supervision Status is not included.

Trading Details by Athex Sectors and Financial Instruments (ETFs)

Code	Sectors	Gain / Lose / Same	Number of Trades	Transactions Volume	Transactions Value	% of Total Trans. Value
8300	- Banks	8 / 0 / 2	8,699	191,400,965	12,107,356.54	25.16%
1700	- Basic Resources	6 / 0 / 1	676	160,998	747,411.78	1.55%
1300	- Chemicals	0 / 1 / 1	6	325	428.15	0.00%
2300	- Construction & Materials	8 / 1 / 1	569	239,197	1,030,996.41	2.14%
12000	- Financial Instruments	3 / 0 / 0	7	5,284	11,052.44	0.02%
8700	- Financial Services	3 / 0 / 0	531	704,593	619,391.23	1.29%
3500	- Food & Beverage	4 / 1 / 2	126	25,497	449,305.15	0.93%
4500	- Health Care	1 / 1 / 1	13	8,721	2,122.12	0.00%
2700	- Industrial Goods & Services	4 / 5 / 2	511	163,849	465,817.43	0.97%
8500	- Insurance	0 / 0 / 0	---	---	---	---
5500	- Media	2 / 1 / 0	28	4,013	257.51	0.00%
500	- Oil & Gas	2 / 0 / 0	1,216	378,621	3,461,743.58	7.19%
3700	- Personal & Household Goods	10 / 1 / 0	415	354,494	2,409,455.04	5.01%
8600	- Real Estate	1 / 4 / 0	320	53,068	362,068.10	0.75%
5300	- Retail	2 / 1 / 0	342	47,346	677,488.25	1.41%
9500	- Technology	5 / 2 / 1	98	23,792	21,611.16	0.04%
6500	- Telecommunications	1 / 0 / 0	1,404	1,522,458	13,321,048.38	27.68%
5700	- Travel & Leisure	4 / 1 / 4	1,301	1,304,423	9,952,382.51	20.68%
7500	- Utilities	4 / 1 / 0	1,582	520,636	2,484,257.06	5.16%

Top 10 best & worst performing Shares

Main Market

With positive Price change	Closing price	change	With negative Price change	Closing price	change
ALPHA BANK (CR)	0.135	27.36% #	FRIGOGLASS SA (CR)	2.23	-3.04% €
EUROBANK ERGASIAS (CR)	0.025	25.00% #	LAMDA DEVELOPMENT SA (CR)	4.51	-1.96% €
PIRAEUS BANK (CR)	0.086	22.86% #	EYDAP S.A. (CR)	5.62	-1.40% €
MARFIN INVESTMENT GROUP (CR)	0.082	6.49% #	GRIVALIA PROPERTIES (CR)	8.43	-0.82% €
HELLENIC PETROLEUM (CR)	5.42	4.43% #			
HELLENIC EXCHANGES-A.S.E. (CR)	5.18	4.22% #			
NATIONAL BANK (CR)	0.571	4.01% #			
VIOHALCO SA/NV (CB)	2.35	3.98% #			
MYTILINEOS HOLDINGS (CR)	4.93	3.57% #			
PPC (CR)	5.17	3.40% #			
With the highest Transactions Value	Value (thou. €)	change	With the highest Transactions Volume	Volume	change
OTE (CR)	13,321.05	2.31% #	EUROBANK ERGASIAS (CR)	115,858,820	25.00% #
OPAP (CR)	9,697.44	2.93% #	ALPHA BANK (CR)	29,114,839	27.36% #
NATIONAL BANK (CR)	3,954.10	4.01% #	PIRAEUS BANK (CR)	20,351,064	22.86% #
ALPHA BANK (CR)	3,623.44	27.36% #	NATIONAL BANK (CR)	6,987,307	4.01% #
MOTOR OIL (CR)	3,001.23	2.08% #	ATTICA BANK S.A. (CR)	2,430,179	0.00% -
EUROBANK ERGASIAS (CR)	2,530.33	25.00% #	OTE (CR)	1,522,458	2.31% #
PPC (CR)	2,308.35	3.40% #	OPAP (CR)	1,146,620	2.93% #
JUMBO SA (CR)	2,235.51	1.47% #	MARFIN INVESTMENT GROUP (CR)	592,614	6.49% #
PIRAEUS BANK (CR)	1,642.68	22.86% #	PPC (CR)	448,051	3.40% #
MYTILINEOS HOLDINGS (CR)	732.23	3.57% #	BANK OF CYPRUS (CR)	363,677	0.00% -

Note: Stocks that are not included in the "Low Dispersion" and "Under Supervision" categories, and the transactions value is more than 10,000 €.

Derivatives Summary

	Number of Trades	Volume	Open Interest
Index Futures	696	8,042	12,428
FTSE/Athex Large Cap	696	8,042	12,428
Stock Futures	1,869	71,222	205,072
ALPHA BANK (CR)	297	25,160	21,108
CC HBC AG (CR)	5	5	28
CORINTH PIPEWORKS SA (CR)	0	0	606
ELLAKTOR (CR)	21	161	1,036
EUROBANK ERGASIAS (CR)	128	11,116	57,794
EYDAP S.A. (CR)	4	9	99
FOLLI FOLLIE (CR)	8	17	441
FRIGOGLASS SA (CR)	15	36	886
GEK TERNA (CR)	13	28	7,812
GRIVALIA PROPERTIES (CR)	8	28	72
HELLENIC EXCHANGES-A.S.E. (CR)	37	82	916
HELLENIC PETROLEUM (CR)	14	34	3,021
INTRALOT (CR)	3	24	278
JUMBO SA (CR)	16	35	437
MARFIN INVESTMENT GROUP (CR)	27	219	28,625
METKA (CR)	7	30	335
MOTOR OIL (CR)	22	43	716
MYTILINEOS HOLDINGS (CR)	53	119	4,537
NATIONAL BANK (CR)	294	7,303	8,531
OPAP (CR)	112	488	1,436
OTE (CR)	157	829	5,110
P.P.A. S.A. (CR)	1	1	184
PIRAEUS BANK (CR)	320	24,489	52,529
PPC (CR)	262	845	6,765
TERNA ENERGY (CR)	10	40	1,006
TITAN CEMENT (CR)	13	30	414
VIOHALCO SA/NV (CB)	22	51	350
Index Options	84	1,016	5,613
FTSE/Athex Large Cap	84	1,016	5,613
Stock Options	0	0	475
ALPHA BANK (CR)	0	0	20
NATIONAL BANK (CR)	0	0	205
OPAP (CR)	0	0	170
OTE (CR)	0	0	10
PIRAEUS BANK (CR)	0	0	20
PPC (CR)	0	0	50
Total Derivatives Traded	2,649	80,280	223,588

Number of Outstanding Securities	Nominal Value	Dividends [1] 2012 2013 2014	Date of Last Dividend [2]	Coupon Right	Note	Shares	Closing price	% change	Previous closing price/date	Open price	Price min	Price max	Last price	Avg price	Last Bid [7]	Last Ask [7]	P/E after	Year	Volume	Trades	Transactions Value[8]	Company Mkt Value (thou. €)	Year low	Year high	Sector[4]
1,141,734,167	---	---	---	11/06/2013	---	ALPHA BANK (W)	0.020	42.86 #	0.014 14/10/2015	0.014	0.013	0.020	0.020	0.017	---	---	---	2014	7,736,737	362	130,062.06	1,723,823.08	0.001	0.979	8355
245,746,615	---	---	---	27/06/2013	---	NATIONAL BANK (W)	0.034	30.77 #	0.026 14/10/2015	0.026	0.024	0.035	0.034	0.031	---	---	---	2014	647,943	265	19,845.69	2,017,428.44	0.011	0.320	8355
843,637,022	---	---	---	03/07/2013	---	PIRAEUS BANK (W)	0.010	25.00 #	0.008 14/10/2015	0.008	0.007	0.010	0.010	0.008	---	---	---	2014	7,907,513	187	66,206.97	524,770.26	0.004	0.252	8355

Warrants

1,141,734,167	---	---	---	11/06/2013	---	ALPHA BANK (W)	0.020	42.86 #	0.014 14/10/2015	0.014	0.013	0.020	0.020	0.017	---	---	---	2014	7,736,737	362	130,062.06	1,723,823.08	0.001	0.979	8355
245,746,615	---	---	---	27/06/2013	---	NATIONAL BANK (W)	0.034	30.77 #	0.026 14/10/2015	0.026	0.024	0.035	0.034	0.031	---	---	---	2014	647,943	265	19,845.69	2,017,428.44	0.011	0.320	8355
843,637,022	---	---	---	03/07/2013	---	PIRAEUS BANK (W)	0.010	25.00 #	0.008 14/10/2015	0.008	0.007	0.010	0.010	0.008	---	---	---	2014	7,907,513	187	66,206.97	524,770.26	0.004	0.252	8355

Main Market

71,417,100	0.650	---	---	0.7	14/05/2015	27/06/2014	---	AEGEAN AIRLINES (CR)	7.25	2.69 #	7.06 14/10/2015	7.17	7.15	7.28	7.25	7.23	---	---	9.11	2014	21,466	188	155,087.72	517,773.98	5.00	8.08	5751	
11,178,000	1.12	---	---	---	21/04/2010	15/12/2014	---	AEOLIAN INVESTMENT FUND (CR)	0.600	---	0.600 14/10/2015	---	---	---	---	---	---	---	---	---	---	---	6,706.80	0.540	0.769	8985		
12,769,059,858	0.300	---	---	---	07/04/2008	13/05/2013	---	ALPHA BANK (CR)	0.135	27.36 #	0.106 14/10/2015	0.107	0.105	0.137	0.135	0.124	---	---	---	2014	29,114,839	2,021	3,623,440.87	1,723,823.08	0.065	0.510	8355	
22,016,250	0.370	---	---	---	15/07/2009	11/05/2000	---	ALUMIL (CR)	0.276	8.24 #	0.255 14/10/2015	0.270	0.270	0.276	0.276	0.273	---	---	---	2014	44	2	12.03	6,076.49	0.216	0.348	1753	
417,608	16.00	---	0.8	---	29/04/2014	05/03/2013	---	ANDROMEDA SA (CR)	14.67	0.96 #	14.53 14/10/2015	14.67	14.67	14.67	14.67	14.67	---	---	---	2014	3	1	44.01	6,126.31	10.11	20.00	8985	
26,252,040	0.340	---	---	---	08/07/2010	10/06/2015	---	AS COMPANY SA (CR)	0.360	1.98 #	0.353 14/10/2015	0.318	0.318	0.364	0.360	0.360	---	---	5.06	2014	9,251	16	3,332.05	9,450.73	0.250	0.400	5379	
86,735,980	0.310	---	---	---	06/07/2009	02/01/2002	---	ATHENS MEDICAL CENTER SA (CR)	0.689	---	0.689 14/10/2015	---	---	---	---	---	---	---	---	---	---	---	59,761.09	0.585	0.990	4533		
1,045,794,145	0.300	---	---	---	04/06/2008	07/08/2014	---	ATTICA BANK S.A. (CR)	0.022	---	0.022 14/10/2015	0.022	0.020	0.024	0.022	0.022	---	---	---	2014	2,430,179	277	52,733.99	23,007.47	0.020	0.084	8355	
15,300,000	0.300	---	---	---	30/07/2009	13/12/1999	---	ATTICA PUBLICATIONS SA (CR)	1.32	---	1.32 14/10/2015	---	---	---	---	---	---	47.61	2014	---	---	---	20,196.00	0.750	1.60	5557		
45,457,464	0.700	---	---	---	01/07/2008	01/03/2010	---	AUDIO VISUAL ENTERPRISES (CR)	0.069	2.99 #	0.067 14/10/2015	0.050	0.050	0.076	0.069	0.055	---	---	---	2014	1,941	19	106.39	3,136.57	0.042	0.277	5553	
12,157,500	0.320	---	---	0.8	20/05/2015	22/11/2013	---	AUTOHELLAS SA (CR)	10.55	-0.47	10.60 14/10/2015	10.55	10.55	10.55	10.55	10.55	---	---	12.73	2014	132	2	1,392.60	128,261.63	8.30	13.80	5759	
8,922,944,533	0.100	---	---	---	31/05/2011	02/02/2015	4857	BANK OF CYPRUS (CR)	0.168	---	0.168 14/10/2015	0.168	0.167	0.169	0.168	0.167	---	---	---	2014	363,677	51	60,882.21	1,499,054.68	0.165	0.232	8355	
19,864,886	5.60	0.5376	0.672	0.672	05/03/2015	02/07/2008	---	BANK OF GREECE (CR)	9.47	0.74 #	9.40 14/10/2015	9.22	9.21	9.49	9.49	9.38	---	---	---	---	---	2,886	41	27,075.47	188,120.47	6.90	12.17	8355
23,986,500	1.05	---	---	---	26/06/2009	15/03/2000	---	BIOKARPET S.A.(CR)	0.250	---	0.250 14/10/2015	---	---	---	---	---	---	---	---	---	---	---	5,996.63	0.160	0.260	3726		
15,842,391	1.51	---	---	---	15/07/2009	12/05/2000	---	BITROS HOLDING SA (CR)	0.310	---	0.310 14/10/2015	---	---	---	---	---	---	---	---	---	---	---	4,911.14	0.144	0.383	1757		
15,816,009	0.300	---	---	---	01/07/2009	17/07/2000	---	BYTE COMPUTER SA (CR)	0.420	---	0.420 14/10/2015	---	---	---	---	---	---	6.32	2014	---	---	---	6,642.72	0.340	0.460	9533		
367,838,247	6.70	0.34	0.354	0.36	02/07/2015	29/04/2013	---	CC HBC AG (CR)	20.70	2.58 #	20.18 14/10/2015	20.19	20.17	20.74	20.70	20.40	---	---	---	---	---	21,923	85	447,170.89	7,614,251.71	13.55	22.35	3537
101,123,806	0.360	---	---	---	22/07/2010	28/06/2011	---	CENTRIC HOLDINGS (CR)	0.132	---	0.132 14/10/2015	0.139	0.132	0.142	0.132	0.140	---	---	21.79	2014	3,543	7	494.72	13,348.34	0.090	0.299	5752	
4,034,950	0.680	---	---	---	01/07/2005	30/12/2010	---	CHATZIKRANIOTIS & SONS SA (CR)	0.107	---	0.107 14/10/2015	---	---	---	---	---	---	---	---	---	---	---	---	431.74	0.073	0.200	3577	
124,170,201	0.780	---	---	---	28/06/2002	07/02/2005	---	CORINTH PIPEWORKS SA (CR)	1.14	---	1.14 14/10/2015	1.14	1.10	1.15	1.14	1.14	---	---	---	2014	4,310	24	4,895.60	141,554.03	0.750	1.31	1757	
9,907,500	0.300	---	---	---	06/10/2005	13/02/2002	---	CPI SA (CR)	0.164	---	0.164 14/10/2015	---	---	---	---	---	---	58.34	2015	---	---	---	1,624.83	0.110	0.234	9572		
27,379,200	0.420	---	0.1	0.045	24/07/2015	14/10/2015	---	CRETE PLASTICS SA (CR)	6.20	---	6.20 14/10/2015	---	---	---	---	---	---	17.97	2014	---	---	---	169,751.04	4.60	6.35	1357		
15,000,000	0.300	---	---	---	06/07/2007	18/07/2000	---	DAIOS PLASTICS SA (CR)	2.70	---	2.70 14/10/2015	---	---	---	---	---	---	-(6)-	2014	---	---	---	40,500.00	2.25	2.76	1357		
34,720,000	0.310	---	---	---	16/06/2010	01/08/2007	---	DROMEAS SA (CR)	0.114	6.54 #	0.107 14/10/2015	0.111	0.107	0.115	0.114	0.112	---	---	---	2014	13,868	28	1,551.44	3,958.08	0.090	0.168	3726	
3,873,120	0.300	---	---	---	07/07/2008	04/10/2012	---	DRUCKFARBEN HELLAS (CR)	0.470	---	0.470 14/10/2015	---	---	---	---	---	---	---	---	---	---	---	1,820.37	0.432	0.900	1357		
11,250,000	0.560	---	---	---	26/07/2010	16/06/1999	---	EKTER SA (CR)	0.440	---	0.440 14/10/2015	---	---	---	---	---	---	---	---	---	---	---	4,950.00	0.280	0.518	2357		
32,188,050	1.04	---	---	---	21/07/2008	20/01/2000	---	EL. D. MOUZAKIS SA (CB)	0.295	---	0.295 14/10/2015	---	---	---	---	---	---	---	---	---	---	---	9,495.47	0.240	0.295	3763		
18,435,000	1.00	---	---	---	07/07/2009	10/09/2010	---	ELASTRON (CR)	0.420	2.44 #	0.410 14/10/2015	0.440	0.420	0.450	0.420	0.436	---	---	---	2014	80	3	34.90	7,742.70	0.340	0.697	1757	
31,734,530	1.60	---	---	---	09/07/2007	19/07/2006	---	ELGEKA SA (CR)	0.239	---	0.239 14/10/2015	---	---	---	---	---	---	---	---	---	---	---	7,584.55	0.155	0.285	3577		
23,828,130	0.500	---	---	---	07/07/2010	17/02/2009	---	ELINOIL S.A. (CR)	0.920	---	0.920 14/10/2015	---	---	---	---	---	---	23.08	2014	---	---	---	21,921.88	0.621	0.968	537		
177,001,313	1.03	---	---	---	05/07/2011	20/12/2007	---	ELLAKTOR (CR)	1.78	2.89 #	1.73 14/10/2015	1.70	1.70	1.82	1.75	1.78	---	---	---	2014	109,515	197	195,043.62	315,062.34	1.02	2.62	2357	
82,667,000	0.300	---	---	---	22/07/2014	---	---	ELTECH ANEMOS S.A. (CR)	0.725	0.69 #	0.720 14/10/2015	0.728	0.716	0.728	0.725	0.724	---	---	12.30	2014	33,319	97	24,128.61	59,933.58	0.534	0.845	7537	
26,730,187	0.600	---	0.05	---	23/06/2014	30/12/2010	---	ELTON SA (CR)	1.01	---	1.01 14/10/2015	1.01	1.01	1.01	1.01	1.01	---	---	11.03	2014	35	1	35.35	26,997.49	0.806	1.05	1353	

Number of Outstanding Securities	Nominal Value	Dividends [1]			Date of Last Coupon		Note	Shares	Closing price	% change	Previous closing price/date	Open price	Price min	Price max	Last price	Avg price	Last Bid [7]	Last Ask [7]	P/E after	Year	Volume	Trades	Transactions Value[8]	Company Mkt Value (thou. €)	Year low	Year high	Sector[4]
14,050,971	0.340	---	---	---	06/07/2011	17/10/2002	---	ELTRAK SA (CR)	1.38	---	1.38	14/10/2015	---	---	---	---	---	---	---	2014	---	---	---	19,390.34	0.990	1.61	2753
125,562,262	0.320	---	---	---	30/05/2014	02/12/2014	---	ELVAL HOLDINGS (CB)	1.66	1.22 #	1.64	14/10/2015	1.60	1.60	1.67	1.66	1.64	---	11.94	2014	3,280	19	5,387.78	208,433.35	0.965	1.80	1753
13,230,000	0.300	---	---	---	11/08/2010	24/09/2015	---	ELVE SA (CR)	0.477	---	0.477	14/10/2015	---	---	---	---	---	---	1.13	2014	---	---	---	6,310.71	0.390	0.554	3763
14,707,876,542	0.300	---	---	---	02/05/2008	13/06/2013	---	EUROBANK ERGASIAS (CR)	0.025	25.00 #	0.020	14/10/2015	0.020	0.019	0.026	0.025	0.022	---	---	2014	115,858,820	1,544	2,530,334.34	367,696.91	0.019	0.209	8355
7,959,900	0.600	---	---	---	02/06/2010	10/12/2013	5031	EUROCONSULTANTS S.A. (CR)	1.65	---	1.65	14/10/2015	1.65	1.64	1.71	1.66	1.67	---	-(6)-	2014	520	16	866.48	13,133.84	1.03	2.22	2791
27,503,677	0.630	0.1	---	---	11/07/2013	18/10/1999	---	EUROPEAN RELIANCE INSUR. (CR)	1.45	---	1.45	14/10/2015	---	---	---	---	---	---	3.89	2014	---	---	---	39,880.33	1.16	1.69	8536
13,673,200	0.880	---	---	---	18/07/2008	26/07/2001	---	EVROFARMA SA (CR)	0.273	9.20 #	0.250	14/10/2015	0.273	0.273	0.273	0.273	0.273	---	---	2014	20	1	5.46	3,732.78	0.198	0.487	3577
106,500,000	0.600	0.15	0.36	0.2	05/05/2015	28/01/2000	---	EYDAP S.A. (CR)	5.62	-1.40 €	5.70	14/10/2015	5.70	5.56	5.75	5.62	5.64	---	14.27	2014	14,863	133	83,844.34	598,530.00	4.03	7.35	7577
52,800,154	0.300	---	0.2	---	20/08/2014	21/06/2004	---	F.G. EUROPE S.A. (CR)	0.588	5.38 #	0.558	14/10/2015	0.503	0.503	0.588	0.588	0.508	---	---	2014	3,770	17	1,916.43	31,046.49	0.390	0.904	3722
10,203,575	0.730	---	---	---	16/07/2007	18/10/1999	---	FIERATEX SA (CR)	0.142	---	0.142	14/10/2015	---	---	---	---	---	---	---	2014	---	---	---	1,448.91	0.078	0.228	3763
11,720,024	0.540	---	0.0394	---	21/08/2014	07/08/2014	---	FLEXOPACK SA (CR)	2.70	---	2.70	14/10/2015	---	---	---	---	---	---	8.27	2014	---	---	---	31,644.06	1.91	3.64	2723
4,181,450	0.500	---	---	---	21/08/2000	05/03/2002	---	FLOUR MILLS SARANTOPOULOS SA	1.01	---	1.01	14/10/2015	---	---	---	---	---	---	---	2014	---	---	---	4,223.26	0.855	1.01	3577
66,948,210	0.300	---	---	0.1005	22/09/2015	22/09/2015	---	FOLLI FOLLIE (CR)	18.02	0.56 #	17.92	14/10/2015	18.06	17.93	18.13	18.02	18.02	---	---	2014	37,395	322	673,964.70	1,206,406.74	14.93	31.50	5379
50,992,322	1.07	---	---	---	21/06/2010	16/07/2002	---	FOURLIS (CR)	2.80	1.82 #	2.75	14/10/2015	2.75	2.75	2.85	2.80	2.77	---	---	2014	52,803	60	146,412.47	142,778.50	1.90	3.70	3722
50,593,832	0.300	---	---	---	07/07/2010	07/09/2011	---	FRIGOGLASS SA (CR)	2.23	-3.04 €	2.30	14/10/2015	2.25	2.23	2.30	2.23	2.25	---	---	2014	30,601	85	68,868.90	112,824.25	1.47	2.61	2757
14,076,360	0.370	---	---	---	19/08/2008	22/07/2003	---	GALAXIDI S.A. (CR)	0.540	---	0.540	14/10/2015	---	---	---	---	---	---	18.15	2014	---	---	---	7,601.23	0.168	0.580	3573
103,144,548	0.570	---	---	---	01/08/2011	07/08/2015	---	GEK TERNA (CR)	1.78	2.30 #	1.74	14/10/2015	1.70	1.70	1.79	1.78	1.77	---	29.55	2014	68,323	166	120,608.04	183,597.30	1.20	2.47	2357
8,418,750	0.300	0.46	---	---	21/01/2015	27/06/2012	---	GEKE SA (CB)	4.04	---	4.04	14/10/2015	---	---	---	---	---	---	---	2014	---	---	---	34,011.75	3.49	6.12	5753
24,060,000	0.300	---	0.017	0.02	03/08/2015	21/01/2000	---	GEN. COMMERCIAL & IND.SA (CR)	0.340	---	0.340	14/10/2015	---	---	---	---	---	---	11.97	2014	---	---	---	8,180.40	0.265	0.420	2797
34,770,982	1.55	---	0.3	0.15	15/05/2015	27/07/2000	---	GR. SARANTIS SA (CR)	7.30	0.69 #	7.25	14/10/2015	7.39	7.13	7.39	7.30	7.30	---	15.46	2014	111	7	810.33	253,828.17	6.57	8.20	3767
101,260,000	2.13	---	0.1821	0.3037	19/03/2015	08/01/2014	---	GRIVALIA PROPERTIES (CR)	8.43	-0.82 €	8.50	14/10/2015	8.25	8.17	8.44	8.43	8.26	---	22.05	2014	33,035	204	272,860.86	853,621.80	6.19	9.00	8675
8,340,750	1.18	---	---	---	25/06/2009	09/09/2015	---	HAIDEMENOS SA (CR)	1.41	---	1.41	14/10/2015	---	---	---	---	---	---	---	2014	---	---	---	11,760.46	0.210	1.43	2791
101,279,627	0.380	---	---	---	26/06/2008	14/07/2006	---	HALKOR SA (CB)	0.337	5.64 #	0.319	14/10/2015	0.333	0.314	0.337	0.337	0.335	---	---	2014	2,068	28	692.58	34,131.23	0.244	0.455	1755
29,546,360	0.710	---	---	---	20/06/2008	23/08/2000	---	HELLENIC CABLES SA (CR)	0.844	-0.82 €	0.851	14/10/2015	0.841	0.840	0.890	0.890	0.841	---	---	2014	1,408	7	1,184.42	24,937.13	0.560	1.15	2733
65,368,563	1.30	0.09	---	0.21	26/05/2015	07/08/2015	---	HELLENIC EXCHANGES-A.S.E. (CR)	5.18	4.22 #	4.97	14/10/2015	4.97	4.93	5.19	5.18	5.10	---	32.79	2014	111,976	366	570,996.39	338,609.16	3.25	6.80	8777
305,635,185	2.18	0.15	---	---	31/12/2014	01/10/2003	4795	HELLENIC PETROLEUM (CR)	5.42	4.43 #	5.19	14/10/2015	5.28	5.19	5.44	5.42	5.37	---	---	2014	85,735	359	460,511.11	1,656,542.70	3.35	5.65	537
305,732,436	0.410	---	---	---	08/07/2009	28/09/2011	---	HYGEIA SA (CR)	0.135	---	0.135	14/10/2015	0.137	0.130	0.137	0.135	0.132	---	---	2014	5,490	7	727.15	41,273.88	0.089	0.206	4533
65,441,118	0.440	---	---	---	24/11/2014	11/08/2015	---	IASO SA (CR)	0.541	-9.83 €	0.600	14/10/2015	0.540	0.540	0.541	0.541	0.541	---	---	2014	2,231	4	1,205.97	35,403.64	0.430	0.731	4533
8,298,467	0.400	---	---	---	30/08/1993	08/05/2013	---	IDEAL GROUP SA (CR)	0.935	---	0.935	14/10/2015	---	---	---	---	---	---	---	2014	---	---	---	7,759.07	0.668	1.16	9574
28,580,100	0.400	---	0.025	---	18/08/2014	10/10/2013	---	IKTINOS HELLAS SA (CR)	1.20	1.70 #	1.18	14/10/2015	1.18	1.18	1.20	1.20	1.20	---	11.47	2014	5,000	9	5,978.36	34,296.12	0.825	1.30	2353
9,090,000	0.900	---	---	---	15/05/2009	13/10/2014	---	ILYDA S.A. (CR)	0.603	---	0.603	14/10/2015	---	---	---	---	---	---	---	2014	---	---	---	5,481.27	0.549	0.739	9537
20,578,374	0.620	---	---	0.4	04/06/2015	18/05/2015	---	INFORM P. LYKOS SA (CR)	0.537	-9.90 €	0.596	14/10/2015	0.537	0.537	0.537	0.537	0.537	---	0.44	2014	1,500	2	805.50	11,050.59	0.300	1.94	2791
11,233,200	0.730	---	---	---	12/07/2010	30/07/1999	---	INTERTECH SA (CR)	0.227	9.66 #	0.207	14/10/2015	0.227	0.227	0.227	0.227	0.227	---	---	2014	30	1	6.81	2,549.94	0.128	0.308	9572
34,986,430	0.440	---	---	---	25/07/2008	23/02/2010	---	INTERWOOD-XYLEMPORIA (CR)	0.110	---	0.110	14/10/2015	---	---	---	---	---	---	---	2014	---	---	---	4,349.04	0.059	0.145	2353
2,566,836	0.440	---	---	---	13/08/2010	09/01/2007	---	INTERWOOD-XYLEMPORIA (PR)	0.195	---	0.195	14/10/2015	---	---	---	---	---	---	---	2014	---	---	---	4,349.04	0.195	0.195	2353
23,154,250	1.36	---	---	---	12/08/2008	02/08/2010	---	INTRACOM CONSTR. (CR)	0.470	---	0.470	14/10/2015	---	---	---	---	---	---	3.79	2014	---	---	---	10,882.50	0.364	0.630	2357
133,025,996	1.41	---	---	---	03/07/2007	07/01/2002	---	INTRACOM HOLDINGS (CR)	0.355	1.14 #	0.351	14/10/2015	0.349	0.349	0.362	0.355	0.355	---	---	2014	17,543	37	6,219.61	47,224.23	0.261	0.511	9578
158,961,721	0.300	0.0026	---	---	30/05/2013	14/11/2007	---	INTRALOT (CR)	1.60	0.63 #	1.59	14/10/2015	1.57	1.57	1.60	1.60	1.60	---	---	2014	54,316	29	86,734.79	254,338.75	1.05	1.86	5752

Daily Official List

Year: 136 Trading Day No: 171

Section 2: Analytic Figures of Shares Transactions

Thursday, 15 October, 2015

Number of Outstanding Securities	Nominal Value	Dividends [1]			Date of Last Coupon		Note	Shares	Closing price	% change	Previous closing price/date	Open price	Price min	Price max	Last price	Avg price	Last Bid [7]	Last Ask [7]	P/E after	Year	Volume	Trades	Transactions Value[8]	Company Mkt Value (thou. €)	Year low	Year high	Sector[4]
77,654,850	0.580	---	---	---	01/07/2011	21/02/2003	---	J & P - AVAX SA (CR)	0.351	---	0.351	14/10/2015	---	---	---	---	---	1.63	2014	---	---	---	27,256.85	0.290	0.660	2357	
136,059,759	1.19	---	0.18	0.18	23/12/2014	05/03/2014	---	JUMBO SA (CR)	8.27	1.47	# 8.15	14/10/2015	8.22	8.11	8.38	8.27	8.27	---	15.07	2015	270,353	270	2,235,505.48	1,125,214.21	5.20	10.98	3747
9,742,920	0.400	0.01	0.01	0.01	10/08/2015	14/07/2000	---	KARAMOLEGOS SA (CR)	2.50	---	2.50	14/10/2015	---	---	---	---	---	---	24.02	2014	---	---	---	24,357.30	1.57	2.50	3577
14,679,792	1.68	---	---	---	24/06/2014	04/09/2000	---	KARATZIS SA (CR)	3.30	---	3.30	14/10/2015	---	---	---	---	---	---	7.98	2014	---	---	---	48,443.31	2.89	3.97	2723
13,202,756	0.350	---	---	---	01/07/2004	05/08/2014	---	KEKROPS SA (CR)	0.223	-7.85	€ 0.242	14/10/2015	0.220	0.220	0.266	0.223	0.235	---	---	2014	350	7	82.27	2,944.21	0.186	0.424	8633
7,595,160	0.600	---	---	---	08/08/2008	18/08/2010	---	KIRIAKOULIS SHIPPING SA (CR)	0.651	---	0.651	14/10/2015	---	---	---	---	---	---	---	2014	---	---	---	4,944.45	0.340	0.716	5759
23,648,700	0.350	---	---	---	13/07/2011	31/03/2015	---	KLEEMAN HELLAS SA (CR)	1.72	---	1.72	14/10/2015	1.72	1.72	1.76	1.72	1.72	---	6.92	2014	11,742	18	20,227.80	40,675.76	1.22	1.90	2757
40,219,218	0.300	---	---	---	25/05/2009	09/07/2013	---	KLOUKINAS - LAPPAS SA (CR)	0.348	-0.57	€ 0.350	14/10/2015	0.350	0.330	0.350	0.348	0.337	---	---	2014	154	5	51.89	13,996.29	0.274	0.470	2357
21,224,340	0.420	---	---	---	02/07/2008	25/04/2006	---	KORDELLOS BROS SA (CR)	0.242	---	0.242	14/10/2015	---	---	---	---	---	---	---	2014	---	---	---	5,136.29	0.117	0.250	1757
13,586,500	0.390	---	---	---	25/06/2010	28/05/2008	---	KORRES (CR)	3.70	-2.37	€ 3.79	14/10/2015	3.70	3.70	3.70	3.70	3.70	---	---	2014	30	1	111.00	50,270.05	3.10	4.25	3767
29,480,000	0.420	---	---	---	19/07/2010	01/08/2007	---	KRETA FARM SA (CR)	0.517	1.97	# 0.507	14/10/2015	0.517	0.517	0.517	0.517	0.517	---	14.20	2014	100	2	51.70	15,241.16	0.253	0.648	3577
33,065,136	0.380	---	---	0.06	04/08/2015	16/09/2013	---	KRI-KRI S.A. (CR)	1.80	---	1.80	14/10/2015	---	---	---	---	---	---	16.67	2014	---	---	---	59,517.24	1.56	1.86	3577
15,804,800	0.330	---	---	---	15/06/2010	12/03/2004	---	KTIMA KOSTAS LAZARIDIS SA (CR)	0.378	---	0.378	14/10/2015	---	---	---	---	---	---	---	2014	---	---	---	5,974.21	0.276	0.396	3535
23,719,554	0.990	---	---	0.2406	14/08/2015	15/09/2014	---	KYRIAKIDIS MARBLES SA (CR)	2.38	1.28	# 2.35	14/10/2015	2.30	2.30	2.38	2.38	2.30	---	9.04	2014	811	5	1,865.38	56,452.54	1.61	2.73	2353
79,721,775	0.300	---	---	---	30/05/2007	23/06/2014	---	LAMDA DEVELOPMENT SA (CR)	4.51	-1.96	€ 4.60	14/10/2015	4.60	4.50	4.65	4.51	4.53	---	---	2014	19,378	103	87,822.87	359,545.21	2.46	4.75	8633
21,364,000	1.12	---	---	---	05/07/2010	10/08/2005	---	LAMPASA HOTEL SA (CR)	17.30	---	17.30	14/10/2015	---	---	---	---	---	---	-(6)-	2014	---	---	---	369,597.20	15.40	18.00	5753
5,939,268	0.620	---	---	---	10/07/2003	03/01/2002	---	LANAKAM SA (CR)	0.930	---	0.930	14/10/2015	---	---	---	---	---	---	---	2014	---	---	---	5,523.52	0.891	1.16	3763
7,734,375	1.00	---	---	---	09/07/2007	07/01/2011	---	LIVANIS SA (CR)	0.170	---	0.170	14/10/2015	---	---	---	---	---	---	---	2014	---	---	---	1,314.84	0.117	0.210	5557
4,740,000	0.860	---	---	---	14/03/2003	---	---	LOGISMOS S.A. (CR)	0.534	9.88	# 0.486	14/10/2015	0.534	0.534	0.534	0.534	0.530	---	---	2014	1	1	0.53	2,531.16	0.216	0.600	9533
17,125,062	0.940	---	---	---	01/06/2010	02/02/2015	---	LOULIS MILLS SA (CR)	1.79	---	1.79	14/10/2015	1.79	1.79	1.79	1.79	1.79	---	8.75	2014	16	1	28.64	30,653.86	1.35	2.35	3577
937,122,261	0.300	---	---	---	26/04/2007	29/08/2014	---	MARFIN INVESTMENT GROUP (CR)	0.082	6.49	# 0.077	14/10/2015	0.077	0.077	0.085	0.082	0.082	---	---	2014	592,614	164	48,350.83	76,844.03	0.066	0.232	8775
9,819,370	0.690	---	---	---	14/08/2007	09/01/2004	---	MATHIOS REFRACTORY SA (CR)	0.443	---	0.443	14/10/2015	---	---	---	---	---	---	---	2014	---	---	---	4,349.98	0.189	0.443	2353
468,700	0.47	0.65	1	25/06/2015	21/05/2004	---	---	MERMEREN KOMB. A.D. PR. (GDR)	5.35	0.75	# 5.31	14/10/2015	5.39	5.35	5.39	5.35	5.36	---	0.36	2014	776	8	4,157.05	2,507.55	4.63	8.15	1775
51,950,600	0.320	0.25	0.3	0.5	08/05/2015	21/10/2005	---	METKA (CR)	8.23	1.60	# 8.10	14/10/2015	8.02	8.02	8.23	8.23	8.14	---	5.78	2014	14,418	129	117,339.71	427,553.44	6.31	10.50	2757
10,500,000	0.950	---	---	---	24/06/2008	19/12/2013	---	MEVACO SA (CR)	1.00	---	1.00	14/10/2015	---	---	---	---	---	---	---	2014	---	---	---	10,500.00	0.701	1.20	2757
6,700,000	0.800	---	0.16	0.03	26/06/2015	29/05/2014	---	MILLS KEPENOS (CR)	2.13	---	2.13	14/10/2015	---	---	---	---	---	---	9.25	2014	---	---	---	14,271.00	1.17	2.14	3577
6,200,000	0.500	---	---	---	22/06/2010	01/11/1995	---	MINERVA KNITWEAR SA (CB)	0.131	---	0.131	14/10/2015	---	---	---	---	---	---	---	2014	---	---	---	812.20	0.131	0.300	3763
12,417,000	0.370	---	---	---	28/07/2008	06/09/2011	---	MLS MULTIMEDIA SA (CR)	3.80	0.53	# 3.78	14/10/2015	3.73	3.73	3.80	3.80	3.79	---	27.97	2014	1,541	21	5,837.30	47,184.60	3.48	4.25	9537
11,700,000	0.590	---	---	---	02/06/2009	24/07/2012	---	MOTODYNAMICS S.A. (CR)	0.828	---	0.828	14/10/2015	---	---	---	---	---	---	---	2014	---	---	---	9,687.60	0.199	0.919	5379
110,782,980	0.750	0.3	0.2	---	26/06/2014	04/11/2013	---	MOTOR OIL (CR)	10.30	2.08	# 10.09	14/10/2015	10.15	10.09	10.30	10.30	10.25	---	---	2014	292,886	857	3,001,232.47	1,141,064.69	5.64	10.99	533
116,915,862	1.07	---	---	---	11/05/2009	06/07/2011	---	MYTILINEOS HOLDINGS (CR)	4.93	3.57	# 4.76	14/10/2015	4.81	4.77	4.93	4.93	4.87	---	---	2014	150,440	592	732,231.84	576,395.20	4.09	6.97	1755
8,321,682	0.670	---	---	---	17/08/2007	23/11/1999	---	N. LEVEDERIS SA (CB)	0.190	---	0.190	14/10/2015	---	---	---	---	---	---	---	2014	---	---	---	4,303.38	0.126	0.220	1757
2,160,524	0.670	0.0436	0.0436	0.0436	29/07/2015	23/11/1999	---	N. LEVEDERIS SA (PB)	1.26	---	1.26	14/10/2015	---	---	---	---	---	---	---	2014	---	---	---	4,303.38	0.380	1.26	1757
11,510,102	0.890	---	---	---	24/06/2005	06/10/1999	---	NAFPAKTOS TEXTILE IND. SA (CB)	0.299	---	0.299	14/10/2015	---	---	---	---	---	---	---	2014	---	---	---	3,441.52	0.193	0.302	3763
6,340,000	0.600	---	---	---	30/11/2009	12/07/2000	---	NAKAS MUSIC	0.936	---	0.936	14/10/2015	---	---	---	---	---	---	9.74	2015	---	---	---	5,934.24	0.461	1.05	5379
3,533,149,631	0.300	---	---	---	16/05/2008	24/05/2013	---	NATIONAL BANK (CR)	0.571	4.01	# 0.549	14/10/2015	0.540	0.531	0.588	0.571	0.566	---	---	2014	6,987,307	2,272	3,954,098.25	2,017,428.44	0.350	1.72	8355
23,935,280	0.300	---	---	---	29/06/2009	13/06/2000	---	NAYTEMPORIKI PUBLISHING SA(CR)	0.105	---	0.105	14/10/2015	---	---	---	---	---	---	---	2014	---	---	---	2,513.20	0.089	0.200	5557
27,848,000	0.300	0.0137	0.004	0.0032	18/08/2015	02/09/2003	---	NEWSPHONE HELLAS SA (CR)	0.210	-8.30	€ 0.229	14/10/2015	0.210	0.210	0.210	0.210	0.210	---	23.88	2014	500	1	105.00	5,848.08	0.176	0.325	2791

Hellenic Exchanges – Athens Stock Exchange S.A.

Section 2, 3/7

Strategic Communication & Market Analysis Division - Market Analysis Department

Number of Outstanding Securities	Nominal Value	Dividends [1]			Date of Last Coupon		Note	Shares	Closing price	% change	Previous closing price/date	Open price	Price min	Price max	Last price	Avg price	Last Bid [7]	Last Ask [7]	P/E after	Year	Volume	Trades	Transactions Value[8]	Company Mkt Value (thou. €)	Year low	Year high	Sector[4]
----------------------------------	---------------	---------------	--	--	---------------------	--	------	--------	---------------	----------	-----------------------------	------------	-----------	-----------	------------	-----------	--------------	--------------	-----------	------	--------	--------	-----------------------	-----------------------------	----------	-----------	-----------

Main Market

6,132,500	1.25	---	---	---	24/06/2011	19/06/2001	---	NEXANS HELLAS SA (CR)	0.949	---	0.949	14/10/2015	---	---	---	---	---	---	2014	---	---	---	5,819.74	0.715	1.77	2733	
319,000,000	0.300	0.57	0.25	0.7017	11/09/2015	25/04/2001	---	OPAP (CR)	8.43	2.93 #	8.19	14/10/2015	8.26	8.25	8.59	8.43	8.46	---	13.91	2014	1,146,620	1,051	9,697,435.86	2,689,170.00	5.65	9.90	5752
490,150,389	2.83	---	---	0.08	25/06/2015	18/06/1998	---	OTE (CR)	8.85	2.31 #	8.65	14/10/2015	8.60	8.58	8.90	8.85	8.75	---	39.40	2014	1,522,458	1,404	13,321,048.38	4,337,830.94	5.75	9.47	6535
25,000,000	2.00	0.05	0.12	0.099	25/06/2015	08/08/2003	---	P.P.A. S.A. (CR)	16.29	0.80 #	16.16	14/10/2015	16.00	15.90	16.34	16.29	16.12	---	60.21	2014	1,418	45	22,854.16	407,250.00	9.32	16.47	2777
4,971,466	1.46	---	---	---	04/07/2007	08/10/2003	---	PAIRIS SA (CR)	0.179	---	0.179	14/10/2015	---	---	---	---	---	---	---	2014	---	---	---	889.89	0.106	0.253	2723
3,953,090	0.900	---	---	0.067	27/05/2015	05/12/2012	---	PAPERPACK (CR)	0.999	---	0.999	14/10/2015	---	---	---	---	---	---	3.07	2014	---	---	---	3,949.14	0.684	1.10	2723
50,797,369	0.310	---	---	---	17/08/2000	12/10/2010	---	PAPOUTSANIS (CR)	0.279	0.36 #	0.278	14/10/2015	0.278	0.278	0.279	0.279	0.278	---	---	2014	105	4	29.20	14,172.47	0.225	0.439	3767
7,070,400	0.930	---	---	---	18/05/2010	25/05/2015	---	PETROPOULOS PETROS (CR)	3.59	0.28 #	3.58	14/10/2015	3.50	3.50	3.59	3.59	3.51	---	22.11	2014	502	4	1,763.28	25,382.74	2.98	3.84	2753
6,101,979,715	0.300	---	---	---	16/05/2008	05/06/2013	---	PIRAEUS BANK (CR)	0.086	22.86 #	0.070	14/10/2015	0.071	0.070	0.090	0.086	0.081	---	---	2014	20,351,064	1,679	1,642,676.69	524,770.26	0.069	1.01	8355
22,080,000	0.330	0.12	0.2	---	21/05/2014	27/04/2015	---	PLAISIO COMPUTERS SA (CR)	4.85	---	4.85	14/10/2015	4.85	4.80	4.85	4.85	4.80	---	6.68	2014	1,737	16	8,341.70	107,088.00	4.04	6.25	9572
232,000,000	4.60	0.025	---	0.05	20/07/2015	12/12/2001	---	PPC (CR)	5.17	3.40 #	5.00	14/10/2015	5.00	4.98	5.22	5.17	5.15	---	35.04	2014	448,051	1,193	2,308,346.76	1,199,440.00	3.30	7.65	7535
11,812,193	0.470	---	---	0.02	26/03/2015	15/11/2006	---	PROFILE SA (CR)	0.485	-2.02 €	0.495	14/10/2015	0.485	0.485	0.485	0.485	0.485	---	12.84	2014	90	1	43.65	5,728.91	0.365	0.527	9533
27,345,120	0.470	---	---	---	18/07/2005	26/02/2014	---	QUALITY & RELIABILITY SA (CR)	0.240	8.11 #	0.222	14/10/2015	0.228	0.207	0.240	0.240	0.221	---	9.01	2014	2,700	18	597.96	6,562.83	0.200	0.560	9533
11,962,443	0.500	---	---	---	05/09/2008	12/12/2013	---	QUEST HOLDINGS (CR)	3.78	-1.56 €	3.84	14/10/2015	3.74	3.74	3.78	3.78	3.76	---	19.95	2014	150	3	563.60	45,218.03	3.53	5.35	9533
57,434,884	1.31	---	---	---	05/06/2008	12/06/2009	---	REDS S.A. (CR)	0.410	9.63 #	0.374	14/10/2015	0.410	0.410	0.410	0.410	0.410	---	---	2014	10	1	4.10	23,548.30	0.331	0.516	8633
22,280,000	0.300	---	---	---	11/04/2011	23/02/2007	---	REVOIL (CR)	0.270	-1.82 €	0.275	14/10/2015	0.275	0.270	0.275	0.270	0.274	---	---	2014	700	4	191.50	6,015.60	0.200	0.403	5379
7,500,000	0.800	0.0024	0.0863	0.1	19/06/2015	10/02/2014	---	S.KANAKIS SA (CR)	1.81	0.56 #	1.80	14/10/2015	1.82	1.79	1.82	1.81	1.80	---	8.16	2014	1,003	28	1,805.60	13,575.00	1.62	2.10	3577
52,067,296	0.300	---	---	---	23/12/2003	24/01/2007	---	SELECTED TEXT. IND. ASSOC (CR)	0.155	1.97 #	0.152	14/10/2015	0.155	0.155	0.155	0.155	0.155	---	---	2015	33	1	5.12	8,070.43	0.130	0.273	3763
204,235,184	0.300	---	---	---	01/07/2008	30/07/2012	---	SELONDA AQUACULTURE SA (CR)	0.091	-8.08 €	0.099	14/10/2015	0.100	0.091	0.100	0.091	0.100	---	1.00	2014	155	2	15.46	18,585.40	0.050	0.123	3573
6,456,530	1.61	---	---	---	29/06/2001	02/08/2010	---	SPACE HELLAS SA (CR)	1.79	---	1.79	14/10/2015	---	---	---	---	---	---	4.73	2014	---	---	---	11,557.19	1.43	1.99	9578
28,438,268	0.300	---	---	---	21/08/2006	24/11/1999	---	SPIROY AGRICULTURE SA (CR)	0.731	---	0.731	14/10/2015	---	---	---	---	---	---	---	2014	---	---	---	20,788.37	0.243	0.738	1357
40,693,350	5.00	---	---	---	03/07/2006	26/05/2015	---	TECHNICAL OLYMPIC SA (CR)	0.899	6.77 #	0.842	14/10/2015	0.779	0.779	0.910	0.899	0.893	---	---	2014	2,329	21	2,080.56	36,583.32	0.571	1.12	3728
109,314,400	0.300	---	---	---	28/05/2012	05/08/2015	---	TERNA ENERGY (CR)	2.79	1.46 #	2.75	14/10/2015	2.71	2.70	2.80	2.79	2.74	---	---	2014	22,408	129	61,470.70	304,987.18	1.70	3.32	7537
36,300,000	1.12	0.162	0.285	0.24	03/08/2015	12/12/2007	---	THESSALONIKA WATER & SEWERAGE	3.26	2.19 #	3.19	14/10/2015	3.16	3.16	3.26	3.26	3.24	---	8.94	2014	1,995	30	6,466.65	118,338.00	2.22	3.35	7577
45,094,620	0.660	0.0467	0.05	0.0225	20/04/2015	01/11/1999	---	THRACE PLASTICS SA (CR)	1.35	-0.74 €	1.36	14/10/2015	1.35	1.35	1.36	1.35	1.35	---	---	2014	290	5	392.80	60,877.74	0.849	1.53	1357
77,063,568	4.00	---	---	0.1551	24/06/2015	25/06/2004	---	TITAN CEMENT (CR)	21.30	0.09 #	21.28	14/10/2015	21.24	21.13	21.43	21.30	21.24	---	19.65	2014	33,091	177	702,734.28	1,714,872.91	15.64	24.95	2353
7,568,960	4.00	---	---	0.1551	24/06/2015	25/06/2004	---	TITAN CEMENT CO. (PR)	9.70	2.11 #	9.50	14/10/2015	9.72	9.70	9.72	9.70	9.70	---	8.95	2014	316	3	3,065.52	1,714,872.91	7.45	10.89	2353
10,080,000	3.00	1.5	0.6	1.95	04/05/2015	27/08/2001	---	TPA SA (CR)	24.64	-0.84 €	24.85	14/10/2015	24.64	24.64	24.64	24.64	24.64	---	11.66	2014	10	2	246.40	248,371.20	15.72	24.90	2777
15,627,315	0.300	---	---	---	16/11/1992	03/12/2012	---	UNIBIOS (CR)	0.103	---	0.103	14/10/2015	---	---	---	---	---	---	---	2014	---	---	---	1,609.61	0.077	0.180	2353
18,810,000	0.400	---	---	---	08/07/2010	14/11/2007	---	VARVERIS - MODA BAGNO SA (CR)	0.130	8.33 #	0.120	14/10/2015	0.130	0.130	0.130	0.130	0.130	---	---	2014	5	1	0.65	2,445.30	0.081	0.184	2353
233,164,646	---	---	---	---	---	23/07/2015	---	VIOHALCO SA/NV (CB)	2.35	3.98 #	2.26	14/10/2015	2.26	2.26	2.35	2.35	2.29	---	---	---	101,230	202	231,555.78	547,936.92	1.79	4.11	2727
4,968,600	2.88	---	---	---	01/07/1998	14/12/1998	---	VIS SA (CR)	0.825	---	0.825	14/10/2015	---	---	---	---	---	---	---	2014	---	---	---	4,099.10	0.461	1.34	2723
6,325,000	0.600	---	---	---	02/05/2014	17/02/2014	---	VOGIATZOGLOU SYSTEMS SA (CR)	1.03	---	1.03	14/10/2015	---	---	---	---	---	---	30.02	2014	---	---	---	6,514.75	0.800	1.03	2797

Exchange Traded Funds (ETFs)

6,030,903	---	---	---	---	24/01/2008	---	---	ALPHA ETF FTSE Athex Large Cap	2.09	2.96 #	2.03	14/10/2015	2.03	2.03	2.10	2.09	2.09	---	---	---	5,280	5	11,024.72	---	1.64	2.84	12003
294,878	---	---	---	---	29/06/2009	---	---	NBGAM ETF	7.82	3.03 #	7.59	14/10/2015	7.82	7.82	7.82	7.82	7.82	---	---	---	2	1	15.64	---	6.43	10.37	12003
388,550	---	---	---	---	03/11/2010	---	---	NBGAM ETF GREECE & TURKEY 30	6.04	1.17 #	5.97	14/10/2015	6.04	6.04	6.04	6.04	6.04	---	---	---	2	1	12.08	---	5.21	8.90	12003

Daily Official List

Year: 136 Trading Day No: 171

Section 2: Analytic Figures of Shares Transactions

Thursday, 15 October, 2015

Number of Outstanding Securities	Nominal Value	Dividends [1]			Date of Last Coupon		Note	Shares	Closing price	% change	Previous closing price/date	Open price	Price min	Price max	Last price	Avg price	Last Bid [7]	Last Ask [7]	P/E after	Year	Volume	Trades	Transactions Value[8]	Company Mkt Value (thou. €)	Year low	Year high	Sector[4]	
14,000,000	4.15	---	---	---	23/04/2010	29/06/1999	4815	ALPHA REAL ESTATE SA(CR)	4.40	-0.23	€ 4.41	14/10/2015	4.40	4.40	4.40	4.40	---	---	23.68	2014	295	5	1,298.00	61,600.00	3.80	6.30	8637	
63,900,000	3.00	---	---	---	23/06/2003	04/11/2008	4816	ASTIR PALACE SA (CR)	2.45	---	↘ 2.45	14/10/2015	2.40	2.40	2.47	2.47	2.45	---	---	---	2014	1,545	7	3,781.15	156,555.00	1.83	3.60	5753
90,902,904	0.800	---	---	---	09/08/2004	08/03/2006	4814	ATHENA SA (CR)	0.300	---	↘ 0.300	14/10/2015	---	---	---	---	---	---	---	---	2014	---	---	---	27,270.87	0.300	0.328	2357
191,660,320	0.300	---	---	---	20/07/2009	29/12/2010	4817	ATTICA HOLDINGS (CR)	0.486	6.11	# 0.458	14/10/2015	0.486	0.486	0.486	0.486	0.486	---	---	---	2014	200	2	97.20	93,146.92	0.287	0.589	5759
71,082,707	1.70	---	---	---	01/07/2010	21/11/2012	4820	HERACLES GEN.CEMENT CO. (CR)	1.17	---	↘ 1.17	14/10/2015	---	---	---	---	---	---	---	---	2014	---	---	---	83,166.77	1.10	1.40	2353
13,404,440	8.63	---	---	---	02/04/2001	06/03/1992	4822	IONIAN HOTELS SA (CR)	6.06	---	↘ 6.06	14/10/2015	---	---	---	---	---	---	---	---	2014	---	---	---	81,230.91	4.98	7.25	5753
2,760,000	11.83	8.52	8.5	9.3	23/06/2015	16/07/1990	4823	KARELIA TOBACCO CO. SA (CB)	230.15	0.94	# 228.00	14/10/2015	230.00	230.00	235.00	235.00	230.17	---	---	10.26	2014	91	3	20,945.00	635,214.00	198.05	298.00	3785
30,600,000	0.300	---	---	---	12/06/2008	04/03/2014	5059	KATHIMERINI SA (CR)	0.283	13.20	# 0.250	14/10/2015	0.200	0.200	0.300	0.300	0.283	---	---	---	2014	120	5	34.00	8,659.80	0.185	0.720	5557
14,074,000	3.00	---	---	---	02/03/2012	23/07/2009	5075	MIG REAL ESTATE (CR)	2.38	---	↘ 2.38	14/10/2015	---	---	---	---	---	---	---	13.58	2014	---	---	---	33,496.12	1.95	3.45	8671
106,980,050	2.25	---	---	---	25/07/2008	24/02/2014	5046	MINOAN LINES SA (CR)	2.00	---	↘ 2.00	14/10/2015	2.00	2.00	2.00	2.00	2.00	---	---	---	2014	1,424	3	2,848.00	213,960.10	1.43	2.00	5759
17,240,776	0.370	---	---	---	14/07/2005	30/09/2003	4827	PERSEUS SA (CR)	0.540	---	↘ 0.540	14/10/2015	---	---	---	---	---	---	---	2.60	2014	---	---	---	9,310.02	0.300	0.700	3577
54,888,240	1.13	0.1	0.09	---	25/04/2014	22/03/2006	5100	TRASTOR REAL EST. INV. CO.(CR)	1.30	---	↘ 1.30	14/10/2015	---	---	---	---	---	---	---	---	2014	---	---	---	71,354.71	0.900	1.41	8671

Surveillance

33,301,715	0.320	---	---	---	27/06/2003	08/07/2009	4978	AEGEK (CR)	0.053	---	↘ 0.053	14/10/2015	---	---	---	---	---	---	---	2014	---	---	---	1,764.99	0.031	0.085	2357	
13,000,000	1.00	---	---	---	01/08/2007	07/04/2000	5093	AKRITAS SA (CR)	0.076	---	↘ 0.076	14/10/2015	0.076	0.076	0.076	0.076	0.076	---	---	---	2014	20	1	1.52	988.00	0.020	0.125	2353
14,870,100	0.300	---	---	---	15/05/2008	26/09/2011	4844	ALPHA GRISSIN S.A. (CR)	0.049	---	↘ 0.049	14/10/2015	---	---	---	---	---	---	---	---	2014	---	---	---	728.63	0.032	0.054	9533
215,246,452	0.300	---	---	---	25/06/2001	24/09/2001	4446	ALTEC SA (CR)	0.012	---	↘ 0.012	14/10/2015	---	---	---	---	---	---	---	---	2014	---	---	---	2,582.96	0.012	0.030	9533
2,969,713	0.300	---	---	---	02/07/2008	28/02/2011	4958	ANEK LINES SA (PR, issue '96)	0.240	---	↘ 0.240	14/10/2015	---	---	---	---	---	---	---	---	2014	---	---	---	12,240.92	0.090	0.240	5759
312,163	0.300	---	---	---	02/07/2008	28/02/2011	4959	ANEK LINES SA (PR, issue '90)	1.30	---	↘ 1.30	14/10/2015	---	---	---	---	---	---	---	---	2014	---	---	---	12,240.92	1.15	1.30	5759
185,373,016	0.300	---	---	---	02/07/2008	28/02/2011	4957	ANEK LINES SA (CR)	0.060	---	↘ 0.060	14/10/2015	0.058	0.058	0.060	0.060	0.060	---	---	---	2014	75,177	12	4,510.47	12,240.92	0.047	0.093	5759
20,255,805	0.300	---	---	---	22/08/2006	02/08/2010	4881	AXON HOLDING SA (CR)	0.058	---	↘ 0.058	14/10/2015	---	---	---	---	---	---	---	---	2014	---	---	---	1,174.84	0.022	0.066	4533
17,579,754	4.16	---	---	---	18/08/2006	02/08/2010	5097	BIOTER SA (CR)	0.124	---	↘ 0.124	14/10/2015	---	---	---	---	---	---	---	---	2014	---	---	---	2,179.89	0.124	0.250	2357
14,173,104	0.300	---	---	---	11/08/2010	28/11/2013	5055	DIONIC (CR)	0.034	---	↘ 0.034	14/10/2015	---	---	---	---	---	---	---	---	2014	---	---	---	481.89	0.025	0.086	2797
15,878,748	0.480	---	---	---	10/07/2006	22/03/2004	5095	DOMIKI KRITIS SA (CR)	0.318	---	↘ 0.318	14/10/2015	---	---	---	---	---	---	---	---	2014	---	---	---	5,049.44	0.216	0.340	2357
3,961,300	1.28	---	---	---	29/06/2004	03/08/2000	5080	DUROS SA (CR)	0.267	---	↘ 0.267	14/10/2015	---	---	---	---	---	---	---	---	2014	---	---	---	1,057.67	0.145	0.585	3763
7,085,888	1.59	---	---	---	02/07/1996	06/09/2010	4690	ELVIEMEK (CR)	3.97	---	↘ 3.97	14/10/2015	---	---	---	---	---	---	---	---	2014	---	---	---	28,130.98	3.97	3.97	8633
6,000,000	0.600	---	---	---	13/06/2008	08/04/2004	4886	EUROBROKERS S.A. (CR)	0.009	---	↘ 0.009	14/10/2015	---	---	---	---	---	---	---	---	2014	---	---	---	54.00	0.009	0.020	8534
21,820,410	0.800	---	---	---	22/05/2008	02/08/2011	4882	EUROMEDICA SA (CR)	0.440	---	↘ 0.440	14/10/2015	---	---	---	---	---	---	---	---	2014	---	---	---	9,600.98	0.320	0.440	4533
110,097,185	0.300	---	---	---	04/12/2013	5033	Forthnet (CR)	0.880	---	↘ 0.880	14/10/2015	---	---	---	---	---	---	---	---	---	2013	---	---	---	96,885.52	0.484	1.19	9535
77,376,446	0.340	---	---	---	23/05/2005	18/08/2011	5094	G.E. DIMITRIOU (CR)	0.008	14.29	# 0.007	14/10/2015	0.008	0.008	0.008	0.008	0.008	---	---	---	2014	11,001	3	88.01	619.01	0.006	0.030	3722
1,270,000	0.300	---	---	---	06/07/2007	06/02/2013	5007	GIRAKIAN PROFIL SA (CB)	0.336	---	↘ 0.336	14/10/2015	---	---	---	---	---	---	---	---	2014	---	---	---	426.72	0.247	0.420	1757
36,748,909	0.730	---	---	---	15/12/2005	13/12/2006	5083	HEL. SUGAR INDUSTRY SA (CB)	0.134	---	↘ 0.134	14/10/2015	---	---	---	---	---	---	---	---	2015	---	---	---	4,924.35	0.113	0.327	3577
1,540,000	0.600	---	---	---	08/08/1994	19/09/2000	5058	J.BOUTARIS & SON HOLD. (PB)	0.006	---	↘ 0.006	14/10/2015	---	---	---	---	---	---	---	---	2014	---	---	---	2,779.00	0.005	0.007	3535
25,179,640	0.600	---	---	---	08/08/1994	19/09/2000	5057	J.BOUTARIS & SON HOLD. SA (CB)	0.110	---	↘ 0.110	14/10/2015	---	---	---	---	---	---	---	---	2014	---	---	---	2,779.00	0.016	0.119	3535
7,125,216	0.650	---	---	---	01/07/2005	14/12/1999	4955	KRE.KA SA (CR)	0.095	---	↘ 0.095	14/10/2015	---	---	---	---	---	---	---	---	2014	---	---	---	676.90	0.095	0.225	3573
51,081,030	1.00	---	---	---	20/08/2007	03/09/2007	4912	LAVIPHARM SA (CR)	0.189	6.78	# 0.177	14/10/2015	0.189	0.189	0.189	0.189	0.189	---	---	---	2014	1,000	2	189.00	9,654.31	0.086	0.190	4577
4,419,616	1.58	---	---	---	21/07/2011	04/03/2015	4983	MEDICON S.A (CR)	0.409	---	↘ 0.409	14/10/2015	---	---	---	---	---	---	---	2.34	2014	---	---	---	1,807.62	0.233	0.453	4535

Number of Outstanding Securities	Nominal Value	Dividends [1] 2012 2013 2014	Date of Last Dividend [2]	Coupon Right	Note	Shares	Closing price	% change	Previous closing price/date	Open price	Price min	Price max	Last price	Avg price	Last Bid [7]	Last Ask [7]	P/E after	Year	Volume	Trades	Transactions Value[8]	Company Mkt Value (thou. €)	Year low	Year high	Sector[4]	
20,231,328	0.600	---	---	---	15/07/2008	25/06/2004	4879	NIKAS SA (CR)	0.079	---	0.079	14/10/2015	---	---	---	---	---	2014	---	---	---	1,598.27	0.079	0.147	3577	
63,697,153	1.34	---	---	---	08/07/2008	10/11/2008	5081	NIREFS SA (CR)	0.100	---	0.100	14/10/2015	0.100	0.098	0.100	0.100	0.100	---	2014	2,280	7	227.40	6,369.72	0.060	0.124	3573
14,967,940	0.500	---	---	---	21/05/2008	04/01/2008	4956	PASAL DEVELOPMENT S.A. (CR)	0.100	---	0.100	14/10/2015	---	---	---	---	---	---	2014	---	---	---	1,496.79	0.060	0.189	8633
40,946,303	0.360	---	---	---	18/07/2005	27/11/2007	5089	PC SYSTEMS SA (CR)	0.023	---	0.023	14/10/2015	---	---	---	---	---	---	2014	---	---	---	941.76	0.023	0.098	9533
18,750,000	0.300	---	---	---	02/07/2001	31/12/2012	4985	PEGASUS PUBLISHING S.A. (CR)	0.075	---	0.075	14/10/2015	---	---	---	---	---	---	2014	---	---	---	1,406.25	0.057	0.283	5557
24,319,250	0.300	---	---	---	09/07/2002	04/07/2007	5054	PROODEFTIKH SA (CR)	0.075	13.64	# 0.066	14/10/2015	0.075	0.075	0.075	0.075	0.075	2.63	2014	21,962	5	1,647.15	1,823.94	0.057	0.152	2357
65,326,268	0.530	---	---	---	04/07/2007	19/07/2006	4750	SATO SA (CR)	0.128	---	0.128	14/10/2015	---	---	---	---	---	---	2014	---	---	---	8,361.76	0.024	0.128	3726
7,914,480	0.300	---	---	---	23/06/2008	29/06/2011	4888	SFKIANAKIS SA (CR)	4.80	---	4.80	14/10/2015	---	---	---	---	---	---	2014	---	---	---	37,989.50	1.12	4.80	5379
10,000,000	1.35	---	---	---	24/06/2008	10/05/2005	4887	SIDMA SA (CR)	0.368	---	0.368	14/10/2015	---	---	---	---	---	---	2014	---	---	---	3,680.00	0.271	0.444	1757
100,793,000	0.300	---	---	---	16/07/2009	05/08/2013	5008	TELETIPOS SA (CR)	0.060	-9.09	€ 0.066	14/10/2015	0.060	0.060	0.060	0.060	0.060	---	2014	1,952	4	117.12	6,047.58	0.019	0.117	5553
16,383,428	0.300	---	---	---	25/06/2002	21/06/2013	4997	VARVAESSOS SA (CB)	0.042	---	0.042	14/10/2015	---	---	---	---	---	1.00	2014	---	---	---	688.10	0.031	0.165	3763
13,191,620	0.620	---	---	---	04/08/2010	09/09/2002	4977	YALCO - CONSTANTINOU SA (CB)	0.103	---	0.103	14/10/2015	---	---	---	---	---	---	2014	---	---	---	1,358.74	0.030	0.189	3722

Under Deletion

1,130,180	0.440	---	---	---	20/06/2003	02/07/2014	5092	COMPUCON SA (CR)	0.010	---	0.010	14/10/2015	---	---	---	---	---	---	2014	---	---	---	11.30	0.005	0.010	9537
9,567,289	0.300	---	---	---	01/07/2004	19/11/2007	5062	MARAC ELECTRONICS (CR)	0.298	---	0.298	14/10/2015	---	---	---	---	---	---	2014	---	---	---	2,851.05	0.298	0.298	9578
766,000	1.00	---	---	---	01/07/2004	11/12/2012	4937	TRIA ALFA SA (CR)	1.80	---	1.80	14/10/2015	---	---	---	---	---	---	2014	---	---	---	1,709.55	1.80	2.29	3763
245,000	1.00	---	---	---	19/07/2010	11/12/2012	4938	TRIA ALFA SA (PR)	1.35	---	1.35	14/10/2015	---	---	---	---	---	---	2014	---	---	---	1,709.55	1.35	1.35	3763
4,737,503	0.320	---	---	---	22/06/2005	22/09/2015	5091	VARANGIS AVEPE S.A. (CR)	0.300	---	0.300	14/10/2015	---	---	---	---	---	---	2014	---	---	---	1,421.25	0.300	0.520	3726

Suspension Status

5,000,000	0.400	---	---	---	03/06/2009	01/09/2014	5087	ALCO HELLAS SA (CR)	0.180	---	0.180	14/10/2015	---	---	---	---	---	---	---	---	---	---	900.00	0.130	0.307	1753
5,025,000	0.300	---	---	---	05/07/2005	14/03/2002	5023	ALSINCO S.A (CR)	0.043	---	0.043	14/10/2015	---	---	---	---	---	---	---	---	---	---	216.08	0.043	0.043	3763
1,750,955,549	0.600	---	---	---	19/05/2008	08/12/2011	4911	ATE (CR)	0.155	---	0.155	14/10/2015	---	---	---	---	---	---	---	---	---	---	271,398.11	0.155	0.155	8355
21,382,067	0.300	---	---	---	02/10/2006	15/02/2006	4628	ATERMON (CR)	0.120	---	0.120	14/10/2015	---	---	---	---	---	---	---	---	---	---	2,565.85	0.120	0.120	5555
81,644,555	0.300	---	---	---	01/07/2008	02/09/2002	5098	ATTI - KAT SA (CR)	0.012	---	0.012	14/10/2015	---	---	---	---	---	---	---	---	---	---	979.73	0.007	0.037	2357
105,423,498	0.510	---	---	---	01/07/2004	28/12/2005	4920	AVENIR S.A. (CR)	0.046	---	0.046	14/10/2015	---	---	---	---	---	---	---	---	---	---	4,849.48	0.046	0.046	5752
33,930,000	0.300	---	---	---	03/07/2006	30/05/2001	4865	BABIS VOVOS SA (CR)	0.304	---	0.304	14/10/2015	---	---	---	---	---	---	---	---	---	---	10,314.72	0.304	0.304	8633
20,121,710	1.21	---	---	---	27/07/1992	12/03/2003	5002	BALKAN R.E. (CR)	0.190	---	0.190	14/10/2015	---	---	---	---	---	---	---	---	---	---	3,823.12	0.190	0.190	8633
21,920,570	0.300	---	---	---	03/07/2007	13/12/1999	4702	CARDASSILARIS SA (CR)	0.140	---	0.140	14/10/2015	---	---	---	---	---	---	---	---	---	---	3,068.88	0.140	0.140	3577
54,547,634	0.500	---	---	---	25/04/2005	21/01/2009	4860	CH.TEGOPOULOS PUBL. SA (CR)	0.038	---	0.038	14/10/2015	---	---	---	---	---	---	---	---	---	---	2,072.81	0.038	0.038	5557
30,159,583	0.470	---	---	---	26/06/2008	29/12/2010	5047	DIAS A/C (CR)	0.050	---	0.050	14/10/2015	---	---	---	---	---	---	---	---	---	---	1,507.98	0.050	0.050	3573
7,847,611	1.20	---	---	---	01/08/2007	28/09/2011	4939	EDRASIS - C. PSALLIDAS SA (CR)	0.150	---	0.150	14/10/2015	---	---	---	---	---	---	---	---	---	---	1,177.14	0.150	0.150	2357
5,750,000	0.300	---	---	---	12/12/2008	12/12/2011	4929	ELECTRONIKI ATHINON SA (CR)	0.480	---	0.480	14/10/2015	---	---	---	---	---	---	---	---	---	---	2,760.00	0.480	0.480	5375
24,605,397	0.400	---	---	---	29/06/1995	27/05/2002	4651	EMPORIKOS DESMOS SA (CR)	0.080	---	0.080	14/10/2015	---	---	---	---	---	---	---	---	---	---	2,134.04	0.080	0.080	3722
1,182,903	0.400	---	---	---	01/07/1996	27/05/2002	4652	EMPORIKOS DESMOS SA (PR)	0.140	---	0.140	14/10/2015	---	---	---	---	---	---	---	---	---	---	2,134.04	0.140	0.140	3722
7,326,648	1.00	---	---	---	26/07/2006	24/07/2001	4921	FINTEXPORT SA (CR)	0.328	---	0.328	14/10/2015	---	---	---	---	---	---	---	---	---	---	2,403.14	0.328	0.328	3763
13,692,227	1.47	---	---	---	07/07/2006	08/10/1999	5049	HELLENIC FABRICS SA (CR)	0.117	---	0.117	14/10/2015	---	---	---	---	---	---	---	---	---	---	1,601.99	0.117	0.117	3763

Number of Outstanding Securities	Nominal Value	Dividends [1] 2012 2013 2014	Date of Last Coupon Dividend [2]	Date of Last Coupon Right	Note	Shares	Closing price	% change	Previous closing price/date	Open price	Price min	Price max	Last price	Avg price	Last Bid [7]	Last Ask [7]	P/E after	Year	Volume	Trades	Transactions Value[8]	Company Mkt Value (thou. €)	Year low	Year high	Sector[4]	
30,390,000	0.310	---	---	---	18/08/2008	29/12/2006	5099	HELLENIC FISHFARMING SA (CR)	0.070	---	0.070	14/10/2015	---	---	---	---	---	---	---	---	---	---	2,127.30	0.026	0.078	3573
24,619,524	0.500	---	---	---	10/10/1986	30/12/2002	4914	KERAMIA-ALLATINI (CR)	0.088	---	0.088	14/10/2015	---	---	---	---	---	---	---	---	---	---	2,166.52	0.088	0.088	8633
7,840,373	1.20	---	---	---	18/07/2002	05/03/2003	4765	KLONATEX SA (PR)	0.080	---	0.080	14/10/2015	---	---	---	---	---	---	---	---	---	---	1,453.75	0.080	0.080	3763
20,663,047	1.20	---	---	---	21/08/2000	05/03/2003	4764	KLONATEX SA (CR)	0.040	---	0.040	14/10/2015	---	---	---	---	---	---	---	---	---	---	1,453.75	0.040	0.040	3763
17,544,600	0.600	---	---	---	03/07/2000	01/08/2000	4868	KOYMBAS SYNERGY GROUP (CR)	0.132	---	0.132	14/10/2015	---	---	---	---	---	---	---	---	---	---	2,315.89	0.132	0.132	8775
15,015,000	1.60	---	---	---	01/07/2002	02/02/2000	4603	MAXIM C.M. PERTSINIDIS SA (CB)	0.100	---	0.100	14/10/2015	---	---	---	---	---	---	---	---	---	---	1,501.50	0.100	0.100	3763
66,937,526	0.700	---	---	---	13/08/2010	21/05/2003	5003	MICHANIKI SA (CR)	0.100	---	0.100	14/10/2015	---	---	---	---	---	---	---	---	---	---	9,186.78	0.100	0.100	2357
25,968,987	0.700	---	---	---	13/08/2010	21/05/2003	5004	MICHANIKI SA (PR)	0.096	---	0.096	14/10/2015	---	---	---	---	---	---	---	---	---	---	9,186.78	0.096	0.096	2357
13,555,100	1.00	---	---	---	08/07/2005	08/07/2005	4576	MICROLAND COMPUTERS SA (CR)	0.640	---	0.640	14/10/2015	---	---	---	---	---	---	---	---	---	---	8,675.26	0.640	0.640	5379
255,459,600	0.300	---	---	---	26/06/2000	03/12/2010	5101	NEL SA (CR)	0.070	---	0.070	14/10/2015	---	---	---	---	---	---	---	---	---	---	17,882.17	0.009	0.070	5759
23,463,874	0.800	---	---	---	23/05/2003	21/12/1999	4918	NEORION SA (CR)	0.125	---	0.125	14/10/2015	---	---	---	---	---	---	---	---	---	---	2,932.98	0.125	0.125	2753
42,501,273	0.300	---	---	---	26/06/2007	10/08/2009	4993	NUTRIART (CR)	0.049	---	0.049	14/10/2015	---	---	---	---	---	---	---	---	---	---	2,082.56	0.049	0.049	3577
20,210,127	1.53	---	---	---	27/06/1997	20/03/2000	5061	PARNASSOS ENTERP. (CR)	0.070	---	0.070	14/10/2015	---	---	---	---	---	---	---	---	---	---	1,414.71	0.070	0.070	8775
25,583,146	0.300	---	---	---	25/06/2001	03/12/2008	4723	PETZETAKIS SA (CR)	0.260	---	0.260	14/10/2015	---	---	---	---	---	---	---	---	---	---	6,651.62	0.260	0.260	1357
9,550,386	0.500	---	---	---	01/07/1997	12/06/2008	4626	PRAXITELIO SA (CR)	0.390	---	0.390	14/10/2015	---	---	---	---	---	---	---	---	---	---	4,430.09	0.390	0.390	4533
1,306,368	0.500	---	---	---	01/07/1997	12/06/2008	4627	PRAXITELIO SA (PR)	0.540	---	0.540	14/10/2015	---	---	---	---	---	---	---	---	---	---	4,430.09	0.540	0.540	4533
62,683,822	0.300	---	---	---	27/05/2008	09/01/2006	4830	PROTON BANK S.A. (CR)	0.180	---	0.180	14/10/2015	---	---	---	---	---	---	---	---	---	---	11,283.09	0.180	0.180	8355
25,667,143	0.320	---	---	---	03/07/2000	18/12/2007	4548	SAOS (CR)	1.56	---	1.56	14/10/2015	---	---	---	---	---	---	---	---	---	---	40,040.74	1.56	1.56	2773
26,408,040	0.300	---	---	---	01/07/1997	26/05/1999	4464	SHEET STEEL SA (CR)	0.120	---	0.120	14/10/2015	---	---	---	---	---	---	---	---	---	---	3,168.96	0.120	0.120	1757
60,221,300	0.400	---	---	---	01/07/2002	01/11/2010	5022	SHELMAN SA (CR)	0.080	---	0.080	14/10/2015	---	---	---	---	---	---	---	---	---	---	4,817.70	0.080	0.080	2353
29,060,950	0.340	---	---	---	20/08/2007	24/10/2001	5088	SPIDER METAL INDUSTRY SA (CR)	0.008	---	0.008	14/10/2015	---	---	---	---	---	---	---	---	---	---	232.49	0.005	0.008	2757
26,262,660	0.900	---	---	---	01/07/2008	24/02/2011	4954	SPRIDER STORES (CR)	0.031	---	0.031	14/10/2015	---	---	---	---	---	---	---	---	---	---	814.14	0.031	0.031	5371
144,688,060	0.600	---	---	---	21/04/2008	10/03/2010	4982	T BANK (CR)	0.048	---	0.048	14/10/2015	---	---	---	---	---	---	---	---	---	---	6,945.03	0.048	0.048	8355
6,523,780	0.530	---	---	---	01/07/2002	06/03/2001	4971	TECHNICAL PUBLICATIONS SA (CR)	0.006	---	0.006	14/10/2015	---	---	---	---	---	---	---	---	---	---	39.14	0.006	0.006	5557
13,920,000	0.320	---	---	---	19/11/2001	01/08/2000	4726	TEXAPRET SA (CR)	0.080	---	0.080	14/10/2015	---	---	---	---	---	---	---	---	---	---	1,113.60	0.080	0.080	3763
510,840	1.00	---	---	---	15/07/2008	21/11/2013	5036	TROPEA HOLDING (CR)	2.00	---	2.00	14/10/2015	---	---	---	---	---	---	---	---	---	---	1,021.68	2.00	2.00	3722
284,465,964	3.70	---	---	---	20/06/2008	15/06/2009	4913	TT HELLENIC POSTBANK (CR)	0.168	---	0.168	14/10/2015	---	---	---	---	---	---	---	---	---	---	47,790.28	0.168	0.168	8355
89,616,200	0.300	---	---	---	21/08/2000	28/06/2007	4616	UNITED TEXTILES (CR)	0.050	---	0.050	14/10/2015	---	---	---	---	---	---	---	---	---	---	4,480.81	0.050	0.050	3763
71,683,906	0.400	---	---	---	15/06/2005	05/02/2008	4953	XATZIOANNOU (CR)	0.026	---	0.026	14/10/2015	---	---	---	---	---	---	---	---	---	---	1,863.78	0.026	0.026	3763

Shares' Notes

Code	Note text
()	- Adjusted dividends.
*	- Last adjusted closing price.
[1]	- Net dividends.
[2]	- The "Date of Last Coupon" for New listings refers to the date company's stocks started to trade in Athex
[3]	- The Company Market Value is referred to the number of outstanding shares
[4]	- Sectors codification can be found in Appendix A
[5]	- The Market Value refers to the total number of shares listed (including their several classes) in the exchange by the company.
[6]	- P/E greater than 100
[7]	- Last view of the Order Book before the end of the trading session
[8]	- All Blocks Methods' Transactions Value are included.
4446	- Transfer to the "Under Supervision" Category as of 20/10/2008.
4464	- Suspension of trading as of 1/12/2008.
4548	- Suspension of trading as of 1/4/2009.
4576	- Suspension of trading as of 14/7/2009.
4603	- Suspension of trading as of 1/12/2009.
4616	- Suspension of trading as of 25/2/2010.
4626	- Suspension of trading as of 1/4/2010.
4627	- Suspension of trading as of 1/4/2010.
4628	- Suspension of trading as of 1/4/2010.
4651	- Suspension of trading as of 1/6/2010.
4652	- Suspension of trading as of 1/6/2010.
4690	- Transfer to Surveillance category as of 4/4/2006.
4702	- Suspension of trading as of 1/12/2010.
4723	- Suspension of trading as of 31/1/2011.
4726	- Suspension of trading as of 1/3/2011.
4750	- Transfer to the "Under Surveillance Category" from 8/4/2011.
4764	- Suspension of trading as of 20/5/2011.
4765	- Suspension of trading as of 20/5/2011.
4795	- The final gross (pre-tax) dividend is € 0.30 per share and subject to withholding tax on the full dividend amount, i.e. 0,45 per share, for those shareholders liable to withholding tax, in accordance with the applicable tax law provisions.
4814	- Transfer to the Low Dispersion Category as of 30/5/2011.
4815	- Transfer to the Low Dispersion Category as of 30/5/2011.
4816	- Transfer to the Low Dispersion Category as of 30/5/2011.
4817	- Transfer to the Low Dispersion Category as of 30/5/2011.
4820	- Transfer to the Low Dispersion category as of 18/4/2008.
4822	- Transfer to the Low Dispersion category as of 30/5/2011.
4823	- Transfer to the Low Dispersion category as of 4/4/2006.
4827	- Transfer to the Low Dispersion category as of 5/5/2010.
4830	- Suspension of trading as of 10/10/2011.
4844	- Transfer to the Surveillance category from 8/4/2011.
4857	- The 793,906,274 new (CR) shares, resulting from the recent share capital increase through a rights issue, are not yet admitted to trading on the ATHEX.
4860	- Suspension of trading as of 30/3/2012.
4865	- Suspension of trading as of 2/4/2012.
4868	- Suspension of trading as of 2/4/2012.
4879	- Transfer to the Surveillance Category as of 10/4/2012.
4881	- Transfer to the Surveillance Category as of 10/4/2012.
4882	- Transfer to the Surveillance Category as of 10/4/2012.
4886	- Transfer to the Surveillance Category as of 10/4/2012.
4887	- Transfer to the Surveillance Category as of 10/4/2012.
4888	- Transfer to the Surveillance Category as of 10/4/2012.
4911	- Lift of suspension from 30/7/2012.
4912	- Transfer to the Surveillance Category as of 31/7/2012.

Shares' Notes

Code	Note text
4913	- Suspension of trading as of 30/8/2012.
4914	- Suspension of trading as of 31/8/2012.
4918	- Suspension of trading as of 31/8/2012.
4920	- Suspension of trading as of 31/8/2012.
4921	- Suspension of trading as of 31/8/2012.
4929	- Suspension of trading as of 1/10/2012.
4937	- Transfer to the UNDER DELETION category as of 30/11/2012.
4938	- Transfer to the UNDER DELETION category as of 30/11/2012.
4939	- Suspension of trading as of 30/11/2012.
4953	- Suspension of trading as of 2/4/2013.
4954	- Suspension of trading as of 2/4/2013.
4955	- Transfer to the Surveillance Category as from 5/4/2013.
4956	- Transfer to the Surveillance Category as from 5/4/2013.
4957	- Transfer to the Surveillance Category as from 5/4/2013.
4958	- Transfer to the Surveillance Category as from 5/4/2013.
4959	- Transfer to the Surveillance Category as from 5/4/2013.
4971	- Suspension of trading as of 3/6/2013.
4977	- Transfer to the "Under Surveillance Category" from 11/6/2013.
4978	- Transfer to the Under Supervision Category as of 11/6/2013.
4982	- Suspension of trading as of 1/12/2011.
4983	- Transfer to the Surveillance Category as of 5/4/2013.
4985	- Transfer to the "Under Surveillance Category" from 8/4/2011.
4993	- Suspension of trading as of 21/6/2013 (15:18).
4997	- Transfer to the Under Supervision Category as of 21/12/2009. - The 6,870,053 new (CB) shares, resulting from the recent share capital increase through a rights issue, are not yet admitted to trading on the ATHEX.
5002	- Suspension of trading as of 30/08/2013.
5003	- Suspension of trading as of 30/08/2013.
5004	- Suspension of trading as of 30/08/2013.
5007	- Transfer to the Surveillance category, as of 11/10/2013.
5008	- Transfer to the Surveillance Category from 8/4/2011.
5022	- Suspension of trading as of 2/12/2013.
5023	- Suspension of trading as of 2/12/2013.
5031	- The 612,300 new (CR) shares, resulting from the recent share capital increase through a rights issue, are not yet admitted to trading on the ATHEX.
5033	- Transfer to the Surveillance Category as of 25/11/2011. The 97,144,575 new (CR) shares, resulting from the recent share capital increase through a rights issue, are not yet admitted to trading on the ATHEX.
5036	- The company's share is under suspension of trading as of 2/4/2012. During suspension, the company proceeded and concluded a share reverse split, according to which - after the conclusion of the corporate action - the total number of the company's shares, as well as, the last closing price of 30/03/2012 were adjusted.
5046	- Transfer to the Low Dispersion category as of 8/4/2011.
5047	- Suspension of trading as of 27/3/2014.
5049	- Under suspension of trading as of 1/4/2014.
5054	- Transfer to the Surveillance Category as of 10/4/2014.
5055	- Transfer to the Surveillance Category as of 10/4/2014.
5057	- Transfer to the Surveillance Category as of 29/12/2011.
5058	- Transfer to the Surveillance Category as of 29/12/2011.
5059	- Transfer to the Low Dispersion category as of 2/6/2014.
5061	- Suspension of trading as of 2/6/2014.
5062	- Transfer to the UNDER DELETION category as of 4/6/2014.
5075	- Transfer to the "Low Dispersion" Category as of 31/10/2014.
5080	- Suspension of trading as of 6/9/2011.
5081	- Transfer to the Surveillance category, as of 19/12/2014.
5083	- Transfer to the Surveillance Category as of 06/03/2015.
5087	- Suspension of trading as of 1/4/2015.
5088	- Suspension of trading as of 1/4/2015.
5089	- Transfer to the Surveillance Category as of 8/4/2015.

Shares' Notes

Code	Note text
5091	- Transfer to the UNDER DELETION category as of 8/4/2015.
5092	- Transfer to the UNDER DELETION category as of 8/4/2015.
5093	- Transfer to the Surveillance Category as of 8/4/2015.
5094	- Transfer to the Surveillance Category as of 8/4/2015.
5095	- Transfer to the Surveillance Category as from 9/4/2015.
5097	- Transfer to the Surveillance Category as of 10/4/2012.
5098	- Suspension of trading as of 2/6/2015.
5099	- Suspension of trading as of 3/6/2015.
5100	- Transfer to the Low Dispersion Category as of 24/6/2015.
5101	- Suspension of trading as of 1/9/2015.

Securities Blocks Details

Securities	Block Volume	Price	Block Trade Value	Time of approval	Note
OTE (CR)	35,000	8.68	303,800.00	12:56:09	20
OTE (CR)	143,669	8.70	1,249,920.30	13:18:36	20
OTE (CR)	144,000	8.70	1,252,800.00	13:28:32	20
OTE (CR)	110,000	8.70	957,000.00	13:29:59	20
OPAP (CR)	260,000	8.47	2,202,200.00	14:24:33	20
JUMBO SA (CR)	100,000	8.26	826,000.00	15:13:19	20
OTE (CR)	100,000	8.77	877,000.00	15:36:13	20
JUMBO SA (CR)	43,579	8.30	361,705.70	15:37:25	20

Blocks Notes

- 9 - Method 6-1 / Special Fees
- 10 - Method 6-1 / Special Fees, SDS
- 14 - Method 6-3 / Settlement, Incomplete Buy and Sell
- 18 - Method 6-2 / SPOT 1
- 19 - Method 6-2 / SPOT 2
- 20 - Method 6-1 and Method 6-1 Same Day Settlement
- 21 - Other Pre-agreed

Shares Rights Details

Occured date	Exercise from	Exercise until	Trading until	Rights	Price min	Price max	Closing price	Last Bid	Last Ask	Volume	Trades	Transactions Value
--------------	---------------	----------------	---------------	--------	-----------	-----------	---------------	----------	----------	--------	--------	--------------------

No Rights Transactions.

Shares Forced Sales

Securities	Transaction s Volume	Number of Trades	Transactions Value	Note
------------	-------------------------	---------------------	-----------------------	------

No Forced Transactions.

Forced Sales Notes

- 1 - Normal Forced Sale.
- 2 - Forced Sales of Fixed Registered Shares.
- 3 - Forced Sales of Remaining Stock Fractions.

Forced Sales Registered Shares

Securities	Start Date	End Date	Initial Volume	Remaining Volume	Date	Avg price (day)	Avg price (period)	Number of Trades	Transactions Volume	Transactions Value
------------	------------	----------	----------------	------------------	------	-----------------	--------------------	------------------	---------------------	--------------------

No Fixed Registered Shares Forced Sales.

Forced Sales Notes

According to Decision 1/380/04.05.2008 of the Hellenic Republic Capital Market Commission, the certificated registered shares that have not been deposited to the issuer for dematerialisation, will be auctioned in the Athens Exchange by the supervising issuer. Forced sales procedure is held according to Article 99A of the Athens Exchange Rulebook. The average price of the period is calculated by dividing the Total transactions value by the Total volume and includes all the transactions made until the current date.

Exchange Traded Funds (ETFs) Characteristics

	Transactions Date (T)	Creation / Redemption	Units (T-1)	New Units (T-1)	Redemption Units (T-1)	Units (T) [1]	Fund Assets [2]	Net Unit Price	Dividend per	Dividend Date
NBGAM ETF ΓΔ Χ.Α.	15/10/2015	25,000	294,878	---	---	294,878	2,243,729.00	7.6090	---	27/10/2011
ALPHA ETF FTSE Athex Large Cap	15/10/2015	50,000	6,030,903	---	---	6,030,903	12,137,600.00	2.0126	0.06	03/08/2015
NBGAM ETF GREECE & TURKEY 30	15/10/2015	25,000	388,550	---	---	388,550	2,318,375.00	5.9667	---	27/10/2011

ETFs Notes

[1] - Units (T) = Units (T-1) + New Units (T-1) - Redemption Units (T-1)

[2] - The Creation / Redemption Units of T-1 are included.

Corporate Bonds

Num Listed Bonds	Nominal price	Issue price	Today's Rate	Exp. Date	Duration (years)	Note	Coupon attached		Trading	Corporate Bonds	Price min	Price max	Closing price	Previous closing		Volume	Transactions Value	Last order			ear min	Year max
							Common	Preferred						price	price/date			Price	Buy / Sell	Date		
1,794,284	12.49	9.77	4.99	31/10/2015	8	---	---	---	1	NIREUS S.A. (Convertible to CR shares)	---	---	---	12.0000	29/01/2014	---	---	11.0000	B	17/11/2014	12.0000	12.0000
212,801,311	1.00	1.00	6.30	29/07/2020	7	---	9	---	1	MARFIN INVESTMENT GROUP S.A. SERIES B (BOND)	---	---	---	0.8500	23/08/2013	---	---	1.0000	B	28/11/2014	0.8500	0.8500
163,991,598	1.00	1.00	7.00	29/07/2019	6	---	9	---	1	MARFIN INVESTMENT GROUP S.A. SERIES A (BOND)	---	---	---	1.0000	23/08/2013	---	---	1.0000	B	28/11/2014	1.0000	1.0000

Corporate Bonds Notes

Transactions Volume = (Pieces) * (Nominal Price). Transactions Value = (Pieces) * (Nominal Price) * (price %) + (Accrued interest).

The price of a Bond is stated as a percentage (%) of Bond's Nominal Price.

Nominal Price in Euros (€), except if it is noted differently.

Government Bonds

Number Listed Bonds	Nominal price	Today's Rate	Accrued Interest Calc	Exp. Date [1]	Duration (years)	Note	Coupons Date	Curr. coupon value	Trading Unit	Government Bonds	Price min	Price max	Closing price	Previous closing price/date	Volume	Transactions Value	Price	Last order Buy / Sell	Date
1,792,455,803	1.00	4.30	Actual/Actual	24/02/2023	11	---	24/02	4.30	1	GGB-FXD-240223-11Y-2.000-1.00	---	---	---	10.0000 22/06/2015	---	---	---	---	---
1,771,485,249	1.00	4.30	Actual/Actual	24/02/2024	12	---	24/02	4.30	1	GGB-FXD-240224-12Y-2.000-1.00	---	---	---	10.0000 22/06/2015	---	---	---	---	---
1,744,316,583	1.00	4.30	Actual/Actual	24/02/2025	13	---	24/02	4.30	1	GGB-FXD-240225-13Y-2.000-1.00	---	---	---	10.0000 22/06/2015	---	---	---	---	---
1,498,761,836	1.00	4.30	Actual/Actual	24/02/2026	14	---	24/02	4.30	1	GGB-FXD-240226-14Y-2.000-1.00	---	---	---	10.0000 22/06/2015	---	---	---	---	---
1,469,952,920	1.00	4.30	Actual/Actual	24/02/2027	15	---	24/02	4.30	1	GGB-FXD-240227-15Y-2.000-1.00	---	---	---	10.0000 22/06/2015	---	---	---	---	---
1,525,434,082	1.00	4.30	Actual/Actual	24/02/2028	16	---	24/02	4.30	1	GGB-FXD-240228-16Y-2.000-1.00	---	---	---	10.0000 22/06/2015	---	---	---	---	---
1,503,860,546	1.00	4.30	Actual/Actual	24/02/2029	17	---	24/02	4.30	1	GGB-FXD-240229-17Y-2.000-1.00	---	---	---	10.0000 22/06/2015	---	---	---	---	---
1,435,418,132	1.00	4.30	Actual/Actual	24/02/2030	18	---	24/02	4.30	1	GGB-FXD-240230-18Y-2.000-1.00	---	---	---	10.0000 22/06/2015	---	---	---	---	---
1,368,045,727	1.00	4.30	Actual/Actual	24/02/2031	19	---	24/02	4.30	1	GGB-FXD-240231-19Y-2.000-1.00	---	---	---	10.0000 22/06/2015	---	---	---	---	---
1,373,758,194	1.00	4.30	Actual/Actual	24/02/2032	20	---	24/02	4.30	1	GGB-FXD-240232-20Y-2.000-1.00	---	---	---	10.0000 22/06/2015	---	---	---	---	---
1,452,639,893	1.00	4.30	Actual/Actual	24/02/2033	21	---	24/02	4.30	1	GGB-FXD-240233-21Y-2.000-1.00	---	---	---	10.0000 22/06/2015	---	---	---	---	---
1,410,344,954	1.00	4.30	Actual/Actual	24/02/2034	22	---	24/02	4.30	1	GGB-FXD-240234-22Y-2.000-1.00	---	---	---	10.0000 22/06/2015	---	---	---	---	---
1,444,202,190	1.00	4.30	Actual/Actual	24/02/2035	23	---	24/02	4.30	1	GGB-FXD-240235-23Y-2.000-1.00	---	---	---	10.0000 22/06/2015	---	---	---	---	---
1,505,138,031	1.00	4.30	Actual/Actual	24/02/2036	24	---	24/02	4.30	1	GGB-FXD-240236-24Y-2.000-1.00	---	---	---	10.0000 22/06/2015	---	---	---	---	---
1,396,254,095	1.00	4.30	Actual/Actual	24/02/2037	25	---	24/02	4.30	1	GGB-FXD-240237-25Y-2.000-1.00	---	---	---	10.0000 22/06/2015	---	---	---	---	---
1,382,167,704	1.00	4.30	Actual/Actual	24/02/2038	26	---	24/02	4.30	1	GGB-FXD-240238-26Y-2.000-1.00	---	---	---	10.0000 22/06/2015	---	---	---	---	---
1,337,331,257	1.00	4.30	Actual/Actual	24/02/2039	27	---	24/02	4.30	1	GGB-FXD-240239-27Y-2.000-1.00	---	---	---	10.0000 22/06/2015	---	---	---	---	---
1,371,908,706	1.00	4.30	Actual/Actual	24/02/2040	28	---	24/02	4.30	1	GGB-FXD-240240-28Y-2.000-1.00	---	---	---	10.0000 22/06/2015	---	---	---	---	---
1,360,659,778	1.00	4.30	Actual/Actual	24/02/2041	29	---	24/02	4.30	1	GGB-FXD-240241-29Y-2.000-1.00	---	---	---	10.0000 22/06/2015	---	---	---	---	---
1,432,747,403	1.00	4.30	Actual/Actual	24/02/2042	30	---	24/02	4.30	1	GGB-FXD-240242-30Y-2.000-1.00	---	---	---	10.0000 22/06/2015	---	---	---	---	---
742,153	1,000.00	0.93	FLR Actual/360	10/08/2019	5	---	10/02 - 10/08	---	1	GGB-FLT-100819-05Y-0.934-1.000	---	---	---	---	---	---	---	---	---
4,030,827	1,000.00	4.75	Actual/Actual	17/04/2019	5	---	17/04	4.75	1	GGB-FXD-170419-05Y-4.750-1.000	---	---	---	---	---	---	---	---	---
2,089,066	1,000.00	3.38	Actual/Actual	17/07/2017	3	---	17/07	3.38	1	GGB-FXD-170717-03Y-3.375-1.000	---	---	---	---	---	---	---	---	---

Government Bonds Notes

Transactions Volume = (Pieces) * (Nominal Price). Transactions Value = (Pieces) * (Nominal Price) * (price %) + (Accrued interest).

The Value of current coupon for the issues with NV 0.01 euro refers to NV 100 euros

FLR: Floating Interest Rate.

[1] - The Expiration Date of the interest bearing period and the Date for coupon payment.

Bonds in Circulation	Currency / Min nominal traded Value	Coupons Payment Date	Current Coupon Value	Note	Coupon Attached	Trading Unit	Issue Date	Duration (years)	Today's Interest	A.I.C in days	Bonds	Last price of previous days	Last Outcry in Cash (euro) Price	Buy / Sell	Date	Trades in Pieces	Life min	Life Max	
Bonds of International Organizations																			
1,000,000	EUR / 1000	21/07	---	---	10	1	21/07/2006	10	5.0 FLR	360	EUROPEAN INVESTMENT BANK BOND	97.50	16/04/2007	---	---	---	---	---	
Corporate Bonds in Foreign Currency and Euro																			
103,746	GBP / 10	01/12	0.25	---	56	1	01/12/1930	98	2.5	360	National Mortgage Bank	2.27	05/02/1996	2.27	S	05/02/1996	---	2.27	2.27
0	GBP / 10	01/12	0.25	---	58	1	01/12/1928	100	2.5	360	National Mortgage Bank	---	---	---	---	---	---	---	---

Government Bonds Notes

A.I.C: Accrued Interest Calculation base.

FLR: Floating Interest Rate.

The minimum tradeable Nominal Value for all Demeterialised Government Titles is 100 Euros.

Athex & ATHEXClear Members List

Member Name	Stock Market			Derivatives Market		ATHEXClear Member				
	Address	Phone	Fax	Market Member	Remote Member	Market Maker	Proprietary	Market Maker	General Clearing	Direct Clearing
A. SARRIS SECURITIES S.A.				a						
6, DRAGATSANIOU STR. ATHINA	(210)-3367700	(210)-3312324								
ALPHA FINANCE INVESTMENT SERVICES S.A.				a		a	a			a
5, MERLIN STR. ATHINA	(210)-3677400	(210)-3311193								
ALPHA BANK A.E.									a	
40, STADIOU STR ATHINA	(210)-3265546	(210)-3265811								
	(210)-3260000	(210)-3264116								
ARGUS STOCKBROKERS LTD				a	a		a			
12-14, KENNEDY AVE, S. 303 NICOSIA	(+35722)-22717000	(+35722)-22717070								
ATLANTIC SECURITIES LIMITED				a	a					
37, PRODROMOU STR. NICOSIA	(+35722)-445400	(+35722)-661914								
ATLAS SECURITIES S.A.				a			a			
14 - 16, VERNON STR.& 125 MICHALAKOPOULOU STR. ATHINA	(210)-3363300	(210)-3238925								
ATTICA BANK S.A.									a	
54, AKADIMIAS STR. ATHINA	(210)-3390757	(210)-3646090								
23, OMIROU STR. ATHINA	(210)-3669000	(210)-3669410								
AXIA VENTURES GROUP LTD				a	a					
10, G. KRANIDIOTI NICOSIA	+357 22 742000	+357 22 742001								
AXON SECURITIES S.A.				a			a			
48, STADIOU ATHINA	(210)-3363800	(210)-3243903								
BETA SECURITIES S.A.				a		a	a			a
, BRAILA & 29 ALEXANDRAS AVE ATHINA	(210)-6478900	(210)-6410139								
BNP PARIBAS SECURITIES SERVICES									a	
94, VAS. SOFIAS AVE ATHINA	(210)-7468500	(210)-7468579								
CAPITAL SECURITIES S.A.				a			a			
58, MITROPOLEOS STR. ATHINA	(210)-3369700	(210)-3369820								
CFS SECURITIES-INVESTMENT SERVICES S.A.				a			a			a
3, STADIOU STR. ATHINA	(210)-3360800	(210)-3311854								
CITIGROUP GLOBAL MARKET LTD				a	a					
, CITIGROUP CENTRE, CANADA SQUARE, CANARY WHART LONDON	002079864000	002079862266								
CREDIT SUISSE SECURITIES (EUROPE) LIMITED				a	a					
, ONE CABOT SQUARE LONDON	+44 20 7888 8888	+44 20 7888 1600								
CYCLOS SECURITIES S.A.				a			a			a
39, PANEPISTIMIOU STR. ATHINA	(210)-3364300	(210)-3239122								
D.A. TSEKOURAS SEC. S.A.				a						
33, STADIOY ATHINA	(210)-3214406	(210)-3211997								
DELTA STOCK AD										a
, MEGAPARK OFFICE BUILDING, 6TH FLOOR, OFFICE AREA E, 115G TSARIG										
DEUTSCHE BANK A.G.				a	a		a			
, 1 GREAT WINCHESTER STREET LONDON	0049 69 910 00									
DYNAMIC SECURITIES				a			a			a
6 - 10, CHAR. TRIKOUPH STR. ATHINA	(210)-3677700	(210)-3677777								
EL. PETROPOULAKIS SECURITIES S.A.				a			a			
9, ARISTIDOU STR. ATHINA	(210)-3213928	(210)-3216810								
ESTINVEST S.A.										a
, 9TH REPUBLICII STREET FOCSANI										
EUROBANK ERGASIAS S.A.									a	
8, OTHONOS STR. ATHINA	(210)-3337969	(210)-3245916								
	(210)-3337000	(210)-3233866								
EUROBANK SECURITIES INVESTMENT FIRM S.A				a		a	a	a		a
10, FILELLINON STR. ATHINA	(210)-3720000	(210)-3720001								
EUROCORP SECURITIES S.A.				a			a			a
14, FILIKIS ETAIRIAS SQ. ATHINA	(210)-7263500	(210)-7263666								
EUOTRUST BROKERAGE S.A.				a						
13-15, SOPHOCLEOUS STR. ATHINA	(210)-3363100	(210)-3238334								
EUROXX SECURITIES S.A.				a			a			a
7, PALAIOLOGOU CHALANDRI	(210)-6879400	(210)-6879401								
G.A. PERVAS SECURITIES-INVESTMENT SERVICES CO S.A.				a						
7 - 9, SOPHOCLEOUS STR. ATHINA	(210)-3251875	(210)-3210291								
GLOBAL CAPITAL SECURITIES AND FINANCIAL SERVICES LTD				a	a					
5, LEMESOU AVE. LEMESOS CYPRUS	(+35722)-710710	(+35722)-339332								
GUARDIAN TRUST SECURITIES S.A				a			a			
15, FILELLINON STR. ATHINA	(210)-3220402	(210)-3220498								

Athex & ATHEXClear Members List

Member Name	Stock Market			Derivatives Market		ATHEXCclear Member				
	Address	Phone	Fax	Market Member	Remote Member	Market Maker	Proprietary	Market Maker	General Clearing	Direct Clearing
HELLENIC BANK (INVESTMENTS) LTD				a	a					
31, KYRIAKOY MATSI AVE. NICOSIA	(+35722)-500100	(+35722)-500110								
HELLENICAMERICAN SEC. S.A.				a		a	a			a
6, EVRIPIDOU STR. ATHINA	(210)-3311100	(210)-3215968								
HSBC BANK PLC									a	
109-111, MESOGION AVE ATHINA	(210)-6961507	(210)-6929310								
INDEX SECURITIES S.A.				a						
6, DRAGATSANIOU STR. ATHINA	(210)-3213920	(210)-3213216								
INVESTMENT BANK OF GREECE S.A.				a		a	a	a	a	
32, AIGEIALIAS MAROUSI	(210) 8173000	(210) 8173101								
24B, KIFISSIAS AVE MAROUSI	(210)-8171800	(210)-8171889								
J. CHR. MAVRIKIS SECURITIES S.A.				a						
5, SOPHOCLEOUS STR. ATHINA	(210)-3213949	(210)-3217767								
KAPPA SECURITIES S.A.				a			a			
15, VALAORITOU STR. ATHINA	(210)-3610371	(210)-3641002								
KARAMANOF SECURITIES-INV. SERVICES S.A.				a			a			
2, SQ. ST THEODORON ATHINA	(210)-3212947	(210)-3217088								
LAIKI FINANCIAL SERVICES LTD				a	a					
26, CLR HOUSE, VIROKOS AVE. NICOSIA	(+35722)-898600	(+35722)-680953								
LEON DEPOLAS SECURITIES S.A.				a		a	a			
1, CHR. LADA STR. ATHINA	(210)-3213286	(210)-3211618								
MAGNA TRUST SECURITIES S.A				a						
9, FIDIOU STR. ATHINA	(210)-3327503	(210)-3327599								
MEGA EQUITY SECURITIES-FINANCIAL SERVICES LTD				a	a		a			
42-44, GRIBA DIGENI AV. NICOSIA	(+35722)-711711	(+35722)-711811								
MERIT SECURITIES S.A				a		a	a			a
38, VAS. KONSTANTINOY STR. ATHINA	(210)-3671800	(210)-3671830								
MERRILL LYNCH				a	a					
2, KING EDWARD STREET LONDON	(+4420)-79952000	(+4420)-79954525								
MIDAS BROKERAGE S.A.				a		a				
5, SOPHOCLEOUS STR. ATHINA	(210)-3253203	(210)-3253205								
N. CHRISOCHOIDES BROKERAGE FIRM S.A.				a			a			a
7 - 9, SOPHOCLEOUS STR. ATHINA	(210)-3213913	(210)-3216115								
NATIONAL BANK OF GREECE S.A.				a			a		a	
68, AKADIMIAS STR. ATHINA	(210)-3328817	(210)-3328678								
86, AIOLOU STR. ATHINA	(210)-3341000	(210)-3228187								
NBG SECURITIES S.A				a		a	a	a		
68, AKADIMIAS STR. ATHINA	(210)-3328500	(210)-3328565								
NUNTIUS SECURITIES S.A				a						
6, DRAGATSANIOU STR. ATHINA	(210)-3350599	(210)-3254846								
ONE PLUS CAPITAL LIMITED				a	a		a			
, 75 PRODOMOU AVENUE, ONEWORLD PARKVIEW HOUSE, 3RD FLOOR	(357)22873760									
PANTELAKIS SECURITIES S.A.				a			a			
109-111, MESOGION AVE. ATHINA	(210)-6965000	(210)-6929550								
PEGASUS BROKERAGE FIRM S.A				a			a			
17, VALAORITOU STR. ATHINA	(210)-3670700	(210)-3670760								
PIRAEUS BANK S.A.				a			a		a	
4, AMERIKIS STR ATHINA	(210)-3335918	(210)-3254207								
4, AMERIKIS STR. ATHINA	(210)-3335000	(210)-3335079								
PIRAEUS SECURITIES S.A.				a		a	a	a		a
10, STADIOU STR. ATHINA	(210)-3354100	(210)-3233814								
PRELIUM SECURITIES-INVESTMENT SERVICES S.A.				a			a			
, KIFISSIAS AVE & 1 DAVAKI STR ATHINA	(210)-3677000	(210)-6920403								
PROCHOICE SECURITIES LTD				a	a					
57, SPYROY KYPRIANOY NICOSIA	+357-24-661192	+357-24-662464								
SHARELINK SECURITIES-FINANCIAL SERVICES LTD				a	a		a			
6, ELLINAS HOUSE, THEOTOKI STR. NICOSIA	(+35722)-554200	(+35722)-750852								
SOCIETE GENERALE S.A.				a	a		a			
17, COURS VALMY PUTEAUX - LA DEFENSE PARIS	(+33) 142134754	(+33) 142135697								
240-242, KIFISSIAS AVE ATHINA	(210)-6790161	(210)-6728828								
SOLIDUS SECURITIES S.A				a			a			a
64, LOUIZIS RIANKOUR STR. ATHINA	(210)-6925500	(210)-6985421								

Athex & ATHEXCclear Members List

Member Name			Stock Market			Derivatives Market		ATHEXCclear Member	
Address	Phone	Fax	Market Member	Remote Member	Market Maker	Proprietary	Market Maker	General Clearing	Direct Clearing
SSIF BROKER SA , 119 CALEA MOTILOR NAPOCA									a
SSIF INTERFINBROK COPORATION SA , STR.CALARASI NR.1 CONSTANTA									a
SSIF VIENNA INVESTMENT TRUST SA , 4 SPLAIUL UNIRII, BUILDING B3, 6TH FLOOR, DISTRICT 4 BUCHAREST									a
ST. EM. LAVRENTAKIS SECURITIES S.A. 7 - 9, SOPHOCLEOUS STR. ATHINA	(210)-3213336	(210)-3246572	a			a			
THE CYPRUS INVESTMENT AND SECURITIES CORPORATION LIMITED (CISCO) 4, EVROU STR. (EUROLIFE HOUSE) NICOSIA	(+35722)-881800	(+35722)-881801	a	a					
UBS LIMITED 1, FINSBURY AVENUE LONDON	(+4420)-79013333	(+4420)-79012345	a	a					

List of Stocks under Market Making operations

Securities	Stock Category
Market Maker	Start Market Making
CYPRUS POPULAR BANK (CR)	Suspension Status
PIRAEUS SECURITIES S.A.	02/02/2013
VIOHALCO (CB)	Suspension Status
ALPHA FINANCE INVESTMENT SERVICES S.A.	11/02/2013
EUROBANK SECURITIES INVESTMENT FIRM S.A	20/01/2013
MERIT SECURITIES S.A	13/12/2012
ALPHA BANK (CR)	Main Market
EUROBANK SECURITIES INVESTMENT FIRM S.A	24/10/2012
HELLENICAMERICAN SEC. S.A.	25/07/2014
INVESTMENT BANK OF GREECE S.A.	08/01/2013
MERIT SECURITIES S.A	03/09/2013
NBG SECURITIES S.A	15/01/2013
PIRAEUS SECURITIES S.A.	28/05/2013
ALUMIL (CR)	Main Market
BETA SECURITIES S.A.	18/07/2013
ATTICA BANK S.A. (CR)	Main Market
BETA SECURITIES S.A.	02/06/2014
EUROBANK SECURITIES INVESTMENT FIRM S.A	25/07/2014
BANK OF CYPRUS (CR)	Main Market
EUROBANK SECURITIES INVESTMENT FIRM S.A	23/03/2015
NBG SECURITIES S.A	22/06/2015
BYTE COMPUTER SA (CR)	Main Market
MERIT SECURITIES S.A	04/08/2013
CC HBC AG (CR)	Main Market
EUROBANK SECURITIES INVESTMENT FIRM S.A	23/10/2013
NBG SECURITIES S.A	29/04/2013
PIRAEUS SECURITIES S.A.	04/05/2015
ELLAKTOR (CR)	Main Market
EUROBANK SECURITIES INVESTMENT FIRM S.A	01/06/2013
INVESTMENT BANK OF GREECE S.A.	02/01/2013
NBG SECURITIES S.A	25/06/2013
ELTECH ANEMOS S.A. (CR)	Main Market
EUROBANK SECURITIES INVESTMENT FIRM S.A	22/07/2014
ELTON SA (CR)	Main Market
BETA SECURITIES S.A.	03/09/2013
EUROBANK ERGASIAS (CR)	Main Market
ALPHA FINANCE INVESTMENT SERVICES S.A.	08/01/2013
EUROBANK SECURITIES INVESTMENT FIRM S.A	01/06/2013
HELLENICAMERICAN SEC. S.A.	25/07/2014
INVESTMENT BANK OF GREECE S.A.	08/01/2013
PIRAEUS SECURITIES S.A.	28/09/2013
EUROCONSULTANTS S.A. (CR)	Main Market
EUROBANK SECURITIES INVESTMENT FIRM S.A	22/07/2014
FOLLI FOLLIE (CR)	Main Market
NBG SECURITIES S.A	17/02/2014
PIRAEUS SECURITIES S.A.	04/05/2015
FOURLIS (CR)	Main Market
HELLENICAMERICAN SEC. S.A.	14/09/2005
FRIGOGLASS SA (CR)	Main Market
EUROBANK SECURITIES INVESTMENT FIRM S.A	27/10/2014
GEK TERNA (CR)	Main Market
HELLENICAMERICAN SEC. S.A.	07/09/2015
INVESTMENT BANK OF GREECE S.A.	02/01/2013
GR. SARANTIS SA (CR)	Main Market
BETA SECURITIES S.A.	14/05/2013
HELLENIC EXCHANGES-A.S.E. (CR)	Main Market
EUROBANK SECURITIES INVESTMENT FIRM S.A	01/06/2013
HELLENICAMERICAN SEC. S.A.	01/09/2014
INVESTMENT BANK OF GREECE S.A.	02/01/2013
NBG SECURITIES S.A	25/06/2013
PIRAEUS SECURITIES S.A.	04/05/2015
HELLENIC PETROLEUM (CR)	Main Market
HELLENICAMERICAN SEC. S.A.	14/09/2015
INTRACOM HOLDINGS (CR)	Main Market
HELLENICAMERICAN SEC. S.A.	07/09/2015
INTRALOT (CR)	Main Market
EUROBANK SECURITIES INVESTMENT FIRM S.A	01/06/2013
INVESTMENT BANK OF GREECE S.A.	02/01/2013
PIRAEUS SECURITIES S.A.	28/09/2013

List of Stocks under Market Making operations

Securities	Market Maker	Start Market Making	Stock Category
KLOUKINAS - LAPPAS SA (CR)			Main Market
	BETA SECURITIES S.A.	22/09/2014	
KRETA FARM SA (CR)			Main Market
	EUROBANK SECURITIES INVESTMENT FIRM S.A	17/11/2014	
LAMDA DEVELOPMENT SA (CR)			Main Market
	EUROBANK SECURITIES INVESTMENT FIRM S.A	08/12/2014	
MARFIN INVESTMENT GROUP (CR)			Main Market
	EUROBANK SECURITIES INVESTMENT FIRM S.A	23/03/2015	
	HELLENICAMERICAN SEC. S.A.	25/07/2014	
	PIRAEUS SECURITIES S.A.	02/02/2013	
MLS MULTIMEDIA SA (CR)			Main Market
	BETA SECURITIES S.A.	18/07/2013	
MOTOR OIL (CR)			Main Market
	EUROBANK SECURITIES INVESTMENT FIRM S.A	23/10/2012	
	HELLENICAMERICAN SEC. S.A.	01/09/2014	
	NBG SECURITIES S.A	17/02/2014	
	PIRAEUS SECURITIES S.A.	04/05/2015	
MYTILINEOS HOLDINGS (CR)			Main Market
	HELLENICAMERICAN SEC. S.A.	25/07/2014	
	INVESTMENT BANK OF GREECE S.A.	02/01/2013	
	NBG SECURITIES S.A	25/06/2013	
	PIRAEUS SECURITIES S.A.	04/05/2015	
NATIONAL BANK (CR)			Main Market
	ALPHA FINANCE INVESTMENT SERVICES S.A.	08/01/2013	
	EUROBANK SECURITIES INVESTMENT FIRM S.A	24/10/2012	
	HELLENICAMERICAN SEC. S.A.	25/07/2014	
	INVESTMENT BANK OF GREECE S.A.	08/01/2013	
	LEON DEPOLAS SECURITIES S.A.	20/04/2015	
	MERIT SECURITIES S.A	03/09/2013	
	NBG SECURITIES S.A	28/02/2013	
	PIRAEUS SECURITIES S.A.	08/09/2013	
OPAP (CR)			Main Market
	ALPHA FINANCE INVESTMENT SERVICES S.A.	08/01/2013	
	EUROBANK SECURITIES INVESTMENT FIRM S.A	24/10/2012	
	HELLENICAMERICAN SEC. S.A.	25/07/2014	
	INVESTMENT BANK OF GREECE S.A.	08/01/2013	
	NBG SECURITIES S.A	15/01/2013	
	PIRAEUS SECURITIES S.A.	04/05/2015	
OTE (CR)			Main Market
	ALPHA FINANCE INVESTMENT SERVICES S.A.	08/01/2013	
	EUROBANK SECURITIES INVESTMENT FIRM S.A	24/10/2012	
	HELLENICAMERICAN SEC. S.A.	25/07/2014	
	INVESTMENT BANK OF GREECE S.A.	08/01/2013	
	LEON DEPOLAS SECURITIES S.A.	20/04/2015	
	MIDAS BROKERAGE S.A.	01/10/2015	
	NBG SECURITIES S.A	01/12/2012	
	PIRAEUS SECURITIES S.A.	08/09/2013	
PAPOUTSANIS (CR)			Main Market
	BETA SECURITIES S.A.	25/11/2013	
PETROPOULOS PETROS (CR)			Main Market
	BETA SECURITIES S.A.	28/05/2013	
PIRAEUS BANK (CR)			Main Market
	EUROBANK SECURITIES INVESTMENT FIRM S.A	23/10/2012	
	HELLENICAMERICAN SEC. S.A.	25/07/2014	
	INVESTMENT BANK OF GREECE S.A.	08/01/2013	
	MERIT SECURITIES S.A	16/09/2013	
	NBG SECURITIES S.A	02/06/2013	
	PIRAEUS SECURITIES S.A.	16/02/2013	
PLAISIO COMPUTERS SA (CR)			Main Market
	BETA SECURITIES S.A.	05/05/2014	
	EUROBANK SECURITIES INVESTMENT FIRM S.A	02/03/2015	
PPC (CR)			Main Market
	ALPHA FINANCE INVESTMENT SERVICES S.A.	08/01/2013	
	EUROBANK SECURITIES INVESTMENT FIRM S.A	23/10/2012	
	HELLENICAMERICAN SEC. S.A.	01/09/2014	
	INVESTMENT BANK OF GREECE S.A.	08/01/2013	
	NBG SECURITIES S.A	26/03/2013	
	PIRAEUS SECURITIES S.A.	28/09/2013	

List of Stocks under Market Making operations

Securities	Market Maker	Start Market Making	Stock Category
PROFILE SA (CR)			Main Market
	EUROBANK SECURITIES INVESTMENT FIRM S.A	23/06/2014	
QUALITY & RELIABILITY SA (CR)			Main Market
	BETA SECURITIES S.A.	20/08/2014	
REDS S.A. (CR)			Main Market
	EUROBANK SECURITIES INVESTMENT FIRM S.A	05/09/2014	
S.KANAKIS SA (CR)			Main Market
	BETA SECURITIES S.A.	01/10/2013	
TITAN CEMENT (CR)			Main Market
	EUROBANK SECURITIES INVESTMENT FIRM S.A	23/10/2012	
	NBG SECURITIES S.A	17/02/2014	
	PIRAEUS SECURITIES S.A.	04/05/2015	
VIOHALCO SA/NV (CB)			Main Market
	ALPHA FINANCE INVESTMENT SERVICES S.A.	17/02/2014	
	MERIT SECURITIES S.A	17/03/2014	

Underlying Asset				Derivatives Market														
Price max	Price min	Closing price	change	Delivery Month	Open price	Price max	Price min	Last price	Closing price	Last Bid	Last Ask	Settlement price	Life high	Life low	Trades	Volume	Open Interest	
FTSE/Athex Large Cap																		
207.85	200.58	207.50	3.30%	October 2015	199.75	209.00	199.75	205.75	205.75	---	---	207.25	210.00	---	330	4,132	2,475	
				November 2015	201.75	211.25	201.00	207.00	207.00	---	---	208.75	---	211.25	---	352	3,719	9,480
				December 2015	202.75	211.25	202.50	210.75	210.75	---	---	208.50	---	211.25	---	14	191	473
				March 2016	---	---	---	---	202.50	---	---	---	---	---	---	---	---	
				June 2016	---	---	---	---	203.50	---	---	---	---	---	---	---	---	
				September 2016	---	---	---	---	204.50	---	---	---	---	---	---	---	---	

(Trade Unit: 1 Index Point x 5€, Cash Settlement)

Underlying Asset				Derivatives Market													
Price max	Price min	Closing price	change	Delivery Month	Open price	Price max	Price min	Last price	Closing price	Last Bid	Last Ask	Settlement price	Life high	Life low	Trades	Volume	Open Interest
ALPHA BANK (CR)				(Contract Size: 100 Securities, Physical Delivery)													
0.137	0.105	0.135	27.36%	December 2015	0.106	0.138	0.105	0.138	0.138	---	---	0.135	0.293	---	297	25,160	20,908
				March 2016	---	---	---	---	0.107	---	---	0.127	---	0.152	---	---	200
				June 2016	---	---	---	---	0.107	---	---	---	---	---	---	---	---
				September 2016	---	---	---	---	0.108	---	---	---	---	---	---	---	---
CC HBC AG (CR)				(Contract Size: 100 Securities, Physical Delivery)													
20.74	20.17	20.70	2.58%	December 2015	20.28	20.58	20.28	20.58	20.58	---	---	20.48	20.58	---	5	5	28
				March 2016	---	---	---	---	20.35	---	---	---	---	---	---	---	---
				June 2016	---	---	---	---	20.46	---	---	---	---	---	---	---	---
				September 2016	---	---	---	---	20.56	---	---	---	---	---	---	---	---
CORINTH PIPEWORKS SA (CR)				(Contract Size: 100 Securities, Physical Delivery)													
1.15	1.10	1.14	0.00%	December 2015	---	---	---	---	1.14	---	---	1.14	1.19	---	---	---	606
				March 2016	---	---	---	---	1.15	---	---	---	---	---	---	---	---
				June 2016	---	---	---	---	1.16	---	---	---	---	---	---	---	---
				September 2016	---	---	---	---	1.16	---	---	---	---	---	---	---	---
ELLAKTOR (CR)				(Contract Size: 100 Securities, Physical Delivery)													
1.82	1.70	1.78	2.89%	December 2015	1.73	1.82	1.71	1.79	1.79	---	---	1.81	1.86	---	19	94	1,003
				March 2016	1.82	1.82	1.81	1.81	1.81	---	---	1.82	1.82	---	2	67	33
				June 2016	---	---	---	---	1.75	---	---	---	---	---	---	---	---
				September 2016	---	---	---	---	1.76	---	---	---	---	---	---	---	---
EUROBANK ERGASIAS (CR)				(Contract Size: 100 Securities, Physical Delivery)													
0.026	0.019	0.025	25.00%	December 2015	0.021	0.026	0.020	0.024	0.024	---	---	0.024	0.158	---	128	11,116	57,794
				March 2016	---	---	---	---	0.020	---	---	---	---	---	---	---	---
				June 2016	---	---	---	---	0.020	---	---	---	---	---	---	---	---
				September 2016	---	---	---	---	0.020	---	---	---	---	---	---	---	---
EYDAP S.A. (CR)				(Contract Size: 100 Securities, Physical Delivery)													
5.75	5.56	5.62	-1.40%	December 2015	5.71	5.75	5.62	5.69	5.69	---	---	5.54	5.96	---	4	9	99
				March 2016	---	---	---	---	5.75	---	---	---	---	---	---	---	---
				June 2016	---	---	---	---	5.78	---	---	---	---	---	---	---	---
				September 2016	---	---	---	---	5.81	---	---	---	---	---	---	---	---
FOLLI FOLLIE (CR)				(Contract Size: 101 Securities, Physical Delivery)													
18.13	17.93	18.02	0.56%	December 2015	18.00	18.14	18.00	18.10	18.10	---	---	18.04	19.08	---	8	17	441
				March 2016	---	---	---	---	18.08	---	---	---	---	---	---	---	---
				June 2016	---	---	---	---	18.17	---	---	---	---	---	---	---	---
				September 2016	---	---	---	---	18.26	---	---	---	---	---	---	---	---
FRIGOGLASS SA (CR)				(Contract Size: 100 Securities, Physical Delivery)													
2.30	2.23	2.23	-3.04%	December 2015	2.28	2.31	2.24	2.24	2.24	---	---	2.26	2.31	---	15	36	886
				March 2016	---	---	---	---	2.32	---	---	---	---	---	---	---	---
				June 2016	---	---	---	---	2.33	---	---	---	---	---	---	---	---
				September 2016	---	---	---	---	2.34	---	---	---	---	---	---	---	---

Underlying Asset				Derivatives Market													
Price max	Price min	Closing price	change	Delivery Month	Open price	Price max	Price min	Last price	Closing price	Last Bid	Last Ask	Settlement price	Life high	Life low	Trades	Volume	Open Interest
GEK TERNA (CR) (Contract Size: 100 Securities, Physical Delivery)																	
1.79	1.70	1.78	2.30%	December 2015	1.75	1.81	1.74	1.81	1.81	---	---	1.79	1.83	---	13	28	7,812
				March 2016	---	---	---	---	1.76	---	---	---	---	---	---	---	---
				June 2016	---	---	---	---	1.76	---	---	---	---	---	---	---	---
				September 2016	---	---	---	---	1.77	---	---	---	---	---	---	---	---
GRIVALIA PROPERTIES (CR) (Contract Size: 100 Securities, Physical Delivery)																	
8.44	8.17	8.43	-0.82%	December 2015	8.35	8.35	8.25	8.25	8.25	---	---	8.25	8.45	---	8	28	72
				March 2016	---	---	---	---	8.57	---	---	---	---	---	---	---	---
				June 2016	---	---	---	---	8.62	---	---	---	---	---	---	---	---
				September 2016	---	---	---	---	8.66	---	---	---	---	---	---	---	---
HELLENIC EXCHANGES-A.S.E. (CR) (Contract Size: 100 Securities, Physical Delivery)																	
5.19	4.93	5.18	4.22%	December 2015	5.01	5.20	5.01	5.15	5.15	---	---	5.31	5.61	---	37	82	916
				March 2016	---	---	---	---	5.01	---	---	---	---	---	---	---	---
				June 2016	---	---	---	---	5.04	---	---	---	---	---	---	---	---
				September 2016	---	---	---	---	5.06	---	---	---	---	---	---	---	---
HELLENIC PETROLEUM (CR) (Contract Size: 100 Securities, Physical Delivery)																	
5.44	5.19	5.42	4.43%	December 2015	5.26	5.42	5.25	5.42	5.42	---	---	5.38	5.63	---	14	34	3,021
				March 2016	---	---	---	---	5.23	---	---	---	---	---	---	---	---
				June 2016	---	---	---	---	5.26	---	---	---	---	---	---	---	---
				September 2016	---	---	---	---	5.29	---	---	---	---	---	---	---	---
INTRALOT (CR) (Contract Size: 100 Securities, Physical Delivery)																	
1.60	1.57	1.60	0.63%	December 2015	1.60	1.61	1.60	1.61	1.61	---	---	1.57	1.72	---	3	24	278
				March 2016	---	---	---	---	1.60	---	---	---	---	---	---	---	---
				June 2016	---	---	---	---	1.61	---	---	---	---	---	---	---	---
				September 2016	---	---	---	---	1.62	---	---	---	---	---	---	---	---
JUMBO SA (CR) (Contract Size: 100 Securities, Physical Delivery)																	
8.38	8.11	8.27	1.47%	December 2015	8.22	8.35	8.22	8.33	8.33	---	---	8.26	8.73	---	16	35	437
				March 2016	---	---	---	---	8.04	---	---	---	---	---	---	---	---
				June 2016	---	---	---	---	8.08	---	---	---	---	---	---	---	---
				September 2016	---	---	---	---	8.12	---	---	---	---	---	---	---	---
MARFIN INVESTMENT GROUP (CR) (Contract Size: 100 Securities, Physical Delivery)																	
0.085	0.077	0.082	6.49%	December 2015	0.076	0.085	0.076	0.083	0.083	---	---	0.084	0.086	---	27	219	28,625
				March 2016	---	---	---	---	0.078	---	---	---	---	---	---	---	---
				June 2016	---	---	---	---	0.078	---	---	---	---	---	---	---	---
				September 2016	---	---	---	---	0.078	---	---	---	---	---	---	---	---
METKA (CR) (Contract Size: 100 Securities, Physical Delivery)																	
8.23	8.02	8.23	1.60%	December 2015	8.14	8.21	8.11	8.11	8.11	---	---	8.11	8.98	---	7	30	335
				March 2016	---	---	---	---	8.17	---	---	---	---	---	---	---	---
				June 2016	---	---	---	---	8.21	---	---	---	---	---	---	---	---
				September 2016	---	---	---	---	8.25	---	---	---	---	---	---	---	---

Underlying Asset				Derivatives Market													
Price max	Price min	Closing price	change	Delivery Month	Open price	Price max	Price min	Last price	Closing price	Last Bid	Last Ask	Settlement price	Life high	Life low	Trades	Volume	Open Interest
MOTOR OIL (CR)																	
(Contract Size: 100 Securities, Physical Delivery)																	
10.30	10.09	10.30	2.08%	December 2015	10.13	10.29	10.11	10.25	10.25	---	---	10.23	10.90	---	22	43	716
---	---	---	---	March 2016	---	---	---	---	10.18	---	---	---	---	---	---	---	---
---	---	---	---	June 2016	---	---	---	---	10.23	---	---	---	---	---	---	---	---
---	---	---	---	September 2016	---	---	---	---	10.28	---	---	---	---	---	---	---	---
MYTILINEOS HOLDINGS (CR)																	
(Contract Size: 100 Securities, Physical Delivery)																	
4.93	4.77	4.93	3.57%	December 2015	4.85	4.95	4.81	4.92	4.92	---	---	4.91	5.91	---	53	119	4,537
---	---	---	---	March 2016	---	---	---	---	4.80	---	---	---	---	---	---	---	---
---	---	---	---	June 2016	---	---	---	---	4.83	---	---	---	---	---	---	---	---
---	---	---	---	September 2016	---	---	---	---	4.85	---	---	---	---	---	---	---	---
NATIONAL BANK (CR)																	
(Contract Size: 100 Securities, Physical Delivery)																	
0.588	0.531	0.571	4.01%	December 2015	0.538	0.588	0.533	0.577	0.577	---	---	0.572	1.28	---	294	7,303	8,481
---	---	---	---	March 2016	---	---	---	---	0.554	---	---	0.560	0.551	---	---	---	50
---	---	---	---	June 2016	---	---	---	---	0.557	---	---	---	---	---	---	---	---
---	---	---	---	September 2016	---	---	---	---	0.559	---	---	---	---	---	---	---	---
OPAP (CR)																	
(Contract Size: 100 Securities, Physical Delivery)																	
8.59	8.25	8.43	2.93%	December 2015	8.34	8.61	8.29	8.48	8.48	---	---	8.49	8.68	---	112	488	1,428
---	---	---	---	March 2016	---	---	---	---	8.26	---	---	8.57	8.56	---	---	---	8
---	---	---	---	June 2016	---	---	---	---	8.30	---	---	---	---	---	---	---	---
---	---	---	---	September 2016	---	---	---	---	8.34	---	---	---	---	---	---	---	---
OTE (CR)																	
(Contract Size: 100 Securities, Physical Delivery)																	
8.90	8.58	8.85	2.31%	December 2015	8.62	8.89	8.60	8.85	8.85	---	---	8.79	8.89	---	157	829	5,110
---	---	---	---	March 2016	---	---	---	---	8.72	---	---	8.89	8.30	---	---	---	---
---	---	---	---	June 2016	---	---	---	---	8.77	---	---	---	---	---	---	---	---
---	---	---	---	September 2016	---	---	---	---	8.81	---	---	---	---	---	---	---	---
P.P.A. S.A. (CR)																	
(Contract Size: 100 Securities, Physical Delivery)																	
16.34	15.90	16.29	0.80%	December 2015	16.20	16.20	16.20	16.20	16.20	---	---	16.00	16.30	---	1	1	184
---	---	---	---	March 2016	---	---	---	---	16.30	---	---	---	---	---	---	---	---
---	---	---	---	June 2016	---	---	---	---	16.38	---	---	---	---	---	---	---	---
---	---	---	---	September 2016	---	---	---	---	16.46	---	---	---	---	---	---	---	---
PIRAEUS BANK (CR)																	
(Contract Size: 100 Securities, Physical Delivery)																	
0.090	0.070	0.086	22.86%	December 2015	0.073	0.090	0.072	0.084	0.084	---	---	0.086	0.435	---	320	24,489	52,529
---	---	---	---	March 2016	---	---	---	---	0.071	---	---	0.076	0.116	---	---	---	---
---	---	---	---	June 2016	---	---	---	---	0.071	---	---	---	---	---	---	---	---
---	---	---	---	September 2016	---	---	---	---	0.071	---	---	---	---	---	---	---	---
PPC (CR)																	
(Contract Size: 100 Securities, Physical Delivery)																	
5.22	4.98	5.17	3.40%	December 2015	5.02	5.24	5.00	5.17	5.17	---	---	5.18	5.49	---	262	845	6,765
---	---	---	---	March 2016	---	---	---	---	5.04	---	---	---	---	---	---	---	---
---	---	---	---	June 2016	---	---	---	---	5.07	---	---	---	---	---	---	---	---
---	---	---	---	September 2016	---	---	---	---	5.09	---	---	---	---	---	---	---	---

Underlying Asset				Derivatives Market													
Price max	Price min	Closing price	change	Delivery Month	Open price	Price max	Price min	Last price	Closing price	Last Bid	Last Ask	Settlement price	Life high	Life low	Trades	Volume	Open Interest
TERNA ENERGY (CR)				(Contract Size: 100 Securities, Physical Delivery)													
2.80	2.70	2.79	1.46%	December 2015	2.78	2.79	2.77	2.78	2.78	---	---	2.78	2.92	---	10	40	1,006
				March 2016	---	---	---	---	2.77	---	---	---	---	---	---	---	---
				June 2016	---	---	---	---	2.79	---	---	---	---	---	---	---	---
				September 2016	---	---	---	---	2.80	---	---	---	---	---	---	---	---
TITAN CEMENT (CR)				(Contract Size: 100 Securities, Physical Delivery)													
21.43	21.13	21.30	0.09%	December 2015	21.28	21.35	21.18	21.26	21.26	---	---	21.17	21.49	---	13	30	414
				March 2016	---	---	---	---	21.46	---	---	---	---	---	---	---	---
				June 2016	---	---	---	---	21.57	---	---	---	---	---	---	---	---
				September 2016	---	---	---	---	21.68	---	---	---	---	---	---	---	---
VIOHALCO SA/NV (CB)				(Contract Size: 100 Securities, Physical Delivery)													
2.35	2.26	2.35	3.98%	December 2015	2.29	2.36	2.29	2.31	2.31	---	---	2.31	2.50	---	22	51	350
				March 2016	---	---	---	---	2.28	---	---	---	---	---	---	---	---
				June 2016	---	---	---	---	2.29	---	---	---	---	---	---	---	---
				September 2016	---	---	---	---	2.30	---	---	---	---	---	---	---	---

FTSE/Athex Large Cap

(Trade Unit: 1 Index Point x 5€ - Exercise Style: European, Cash Settlement)

Exercise Price	Call Options														Put Options																							
	October 2015							November 2015							Other Months		October 2015							November 2015							Other Months		Exercise Price					
	Open price	Price max	Price min	Last price	Closing price	Volume	Open Interest	Open price	Price max	Price min	Last price	Closing price	Volume	Open Interest	Volume	Open Interest	Open price	Price max	Price min	Last price	Closing price	Volume	Open Interest	Open price	Price max	Price min	Last price	Closing price	Volume	Open Interest	Volume	Open Interest						
130	-	-	-	-	-	-	-	0.00	0.00	0.00	-	73.00	-	36	-	-	-	-	-	-	-	-	-	0.00	0.00	0.00	-	0.01	-	-	0.00	0.00		0.00	-	0.31	-	-
155	0.00	0.00	0.00	-	46.00	-	-	0.00	0.00	0.00	-	48.50	-	-	0.00	0.00	0.00	-	0.01	-	-	0.00	0.00	0.00	-	0.31	-	-	0.00	0.00	0.00	-	0.31	-	-	155		
160	0.00	0.00	0.00	-	41.00	-	-	0.00	0.00	0.00	-	43.75	-	-	0.00	0.00	0.00	-	0.02	-	-	0.00	0.00	0.00	-	0.55	-	19	0.00	0.00	0.00	-	0.55	-	19	160		
165	0.00	0.00	0.00	-	36.00	-	-	0.00	0.00	0.00	-	39.00	-	-	0.00	0.00	0.00	-	0.01	-	-	0.00	0.00	0.00	-	0.91	-	1	0.00	0.00	0.00	-	0.91	-	1	165		
170	0.00	0.00	0.00	-	31.00	-	-	0.00	0.00	0.00	-	34.50	-	-	0.00	0.00	0.00	-	0.01	-	40	0.00	0.00	0.00	-	1.40	-	-	0.00	0.00	0.00	-	1.40	-	-	170		
175	0.00	0.00	0.00	-	26.00	-	87	0.00	0.00	0.00	-	30.25	-	-	0.00	0.00	0.00	-	0.01	-	10	0.00	0.00	0.00	-	2.20	-	60	0.00	0.00	0.00	-	2.20	-	60	175		
180	0.00	0.00	0.00	-	21.00	-	60	0.00	0.00	0.00	-	26.25	-	-	0.00	0.00	0.00	-	0.01	-	493	0.00	0.00	0.00	-	3.10	-	-	0.00	0.00	0.00	-	3.10	-	-	180		
185	0.00	0.00	0.00	-	16.00	-	72	0.00	0.00	0.00	-	22.50	-	230	0.00	0.00	0.00	-	0.01	-	40	0.00	0.00	0.00	-	4.40	-	30	0.00	0.00	0.00	-	4.40	-	30	185		
190	11.50	17.25	11.50	17.25	17.25	72	100	0.00	0.00	0.00	-	19.25	-	-	11.50	17.25	0.00	-	0.08	-	13	0.00	0.00	0.00	-	6.00	-	5	0.00	0.00	0.00	-	6.00	-	5	190		
195	7.20	12.00	7.00	12.00	12.00	252	769	0.00	0.00	0.00	-	16.00	-	90	7.20	12.00	0.00	-	0.53	-	28	0.00	0.00	0.00	-	7.90	-	-	0.00	0.00	0.00	-	7.90	-	-	195		
200	3.50	7.70	3.50	6.60	6.60	223	1,304	0.00	0.00	0.00	-	13.25	-	58	3.50	7.70	0.00	-	2.00	-	249	9.00	9.00	9.00	9.00	9.00	21	50	0.00	0.00	0.00	-	9.00	21	50	200		
205	1.50	4.00	1.10	4.00	4.00	82	374	11.00	15.50	11.00	15.50	15.50	330	380	1.50	4.00	0.00	-	5.00	-	192	0.00	0.00	0.00	-	12.75	-	120	0.00	0.00	0.00	-	12.75	-	120	205		
210	0.00	0.00	0.00	-	0.22	-	46	0.00	0.00	0.00	-	8.90	-	-	0.00	0.00	0.00	-	9.20	-	1	0.00	0.00	0.00	-	15.75	-	-	0.00	0.00	0.00	-	15.75	-	-	210		
215	0.00	0.00	0.00	-	0.03	-	300	6.70	6.70	6.70	6.70	6.70	21	21	0.00	0.00	0.00	-	14.00	-	-	0.00	0.00	0.00	-	18.75	-	-	0.00	0.00	0.00	-	18.75	-	-	215		
220	0.00	0.00	0.00	-	0.02	-	-	-	-	-	-	-	-	-	0.00	0.00	0.00	-	19.00	-	-	-	-	-	-	-	-	-	-	-	-	-	-	-	220			
225	0.00	0.00	0.00	-	0.02	-	-	-	-	-	-	-	-	-	0.00	0.00	0.00	-	24.00	-	-	-	-	-	-	-	-	-	-	-	-	-	-	-	225			
230	0.00	0.00	0.00	-	0.01	-	50	-	-	-	-	-	-	-	0.00	0.00	0.00	-	29.00	-	-	-	-	-	-	-	-	-	-	-	-	-	-	-	230			
235	0.00	0.00	0.00	-	0.01	-	-	-	-	-	-	-	-	-	0.00	0.00	0.00	-	34.00	-	-	-	-	-	-	-	-	-	-	-	-	-	-	-	235			
240	0.00	0.00	0.00	-	0.01	-	-	-	-	-	-	-	-	-	0.00	0.00	0.00	-	39.00	-	-	-	-	-	-	-	-	-	-	-	-	-	-	-	240			
245	0.00	0.00	0.00	-	0.01	-	30	-	-	-	-	-	-	-	0.00	0.00	0.00	-	44.00	-	-	-	-	-	-	-	-	-	-	-	-	-	-	-	245			
250	0.00	0.00	0.00	-	0.01	-	-	-	-	-	-	-	-	-	0.00	0.00	0.00	-	49.00	-	-	-	-	-	-	-	-	-	-	-	-	-	-	-	250			
255	0.00	0.00	0.00	-	0.02	-	-	-	-	-	-	-	-	-	0.00	0.00	0.00	-	54.00	-	-	-	-	-	-	-	-	-	-	-	-	-	-	-	255			
260	0.00	0.00	0.00	-	0.01	-	-	-	-	-	-	-	-	-	0.00	0.00	0.00	-	59.00	-	-	-	-	-	-	-	-	-	-	-	-	-	-	-	260			
265	0.00	0.00	0.00	-	0.01	-	-	-	-	-	-	-	-	-	0.00	0.00	0.00	-	64.00	-	-	-	-	-	-	-	-	-	-	-	-	-	-	-	265			
270	-	-	-	-	-	-	-	-	-	-	-	-	-	-	-	-	-	-	-	-	-	-	-	-	-	-	-	-	-	-	-	-	-	-	270			
275	-	-	-	-	-	-	-	-	-	-	-	-	-	-	-	-	-	-	-	-	-	-	-	-	-	-	-	-	-	-	-	-	-	-	275			
280	-	-	-	-	-	-	-	-	-	-	-	-	-	-	-	-	-	-	-	-	-	-	-	-	-	-	-	-	-	-	-	-	-	-	280			
285	-	-	-	-	-	-	-	-	-	-	-	-	-	-	-	-	-	-	-	-	-	-	-	-	-	-	-	-	-	-	-	-	-	-	285			
290	-	-	-	-	-	-	-	-	-	-	-	-	-	-	-	-	-	-	-	-	-	-	-	-	-	-	-	-	-	-	-	-	-	-	290			
295	-	-	-	-	-	-	-	-	-	-	-	-	-	-	-	-	-	-	-	-	-	-	-	-	-	-	-	-	-	-	-	-	-	-	295			
300	-	-	-	-	-	-	-	-	-	-	-	-	-	-	-	-	-	-	-	-	-	-	-	-	-	-	-	-	-	-	-	-	-	-	300			
450	-	-	-	-	-	-	-	0.00	0.00	0.00	-	0.02	-	-	-	-	-	-	-	-	-	-	-	-	-	-	-	-	-	-	-	-	-	-	450			
Totals:						629	3,192					351	815	5	235						0	1,066						21	295	10	10							
Number of Trades:						69						11		1							0							2		1								

ALPHA BANK (CR)

(Contract Size: 100 Securities, Exercise Style: American, Physical Delivery)

Exercise Price	Call Options														Put Options																		
	October 2015							November 2015							Other Months		October 2015							November 2015							Other Months		Exercise Price
	Open price	Price max	Price min	Last price	Closing price	Volume	Open Interest	Open price	Price max	Price min	Last price	Closing price	Volume	Open Interest	Volume	Open Interest	Open price	Price max	Price min	Last price	Closing price	Volume	Open Interest	Open price	Price max	Price min	Last price	Closing price	Volume	Open Interest	Volume	Open Interest	
0.100	0.000	0.000	0.000	0.007	-	20	0.000	0.000	0.000	0.016	-	-				0.000	0.000	0.000	0.001	-	-				0.000	0.000	0.000	0.010	-	-			
0.200	0.000	0.000	0.000	0.001	-	-	0.000	0.000	0.000	0.001	-	-				0.000	0.000	0.000	0.094	-	-				0.000	0.000	0.000	0.094	-	-			0.002
0.300	0.000	0.000	0.000	0.001	-	-	0.000	0.000	0.000	0.001	-	-				0.000	0.000	0.000	0.194	-	-				0.000	0.000	0.000	0.194	-	-			0.003
0.400	0.000	0.000	0.000	0.001	-	-	0.000	0.000	0.000	0.001	-	-				0.000	0.000	0.000	0.294	-	-				0.000	0.000	0.000	0.294	-	-			0.004
0.500	0.000	0.000	0.000	0.001	-	-	0.000	0.000	0.000	0.001	-	-				0.000	0.000	0.000	0.394	-	-				0.000	0.000	0.000	0.394	-	-			0.005
0.600	0.000	0.000	0.000	0.001	-	-										0.000	0.000	0.000	0.494	-	-											0.006	
0.700	0.000	0.000	0.000	0.001	-	-										0.000	0.000	0.000	0.594	-	-											0.007	
0.800					-	-																										0.008	
0.900					-	-																										0.009	
Totals:					0	20						0	0	0	0							0	0							0	0	0	
Number of Trades:						0							0	0	0								0.00							0	0		

NATIONAL BANK (CR)

(Contract Size: 100 Securities, Exercise Style: American, Physical Delivery)

Exercise Price	Call Options														Put Options																		
	October 2015							November 2015							Other Months		October 2015							November 2015							Other Months		Exercise Price
	Open price	Price max	Price min	Last price	Closing price	Volume	Open Interest	Open price	Price max	Price min	Last price	Closing price	Volume	Open Interest	Volume	Open Interest	Open price	Price max	Price min	Last price	Closing price	Volume	Open Interest	Open price	Price max	Price min	Last price	Closing price	Volume	Open Interest	Volume	Open Interest	
0.100	0.000	0.000	0.000	0.449	-	-	0.000	0.000	0.000	0.449	-	-	-	-	0.000	0.000	0.000	0.001	-	-	0.000	0.000	0.000	0.001	-	-	-	-	0.001	0.001			
0.200	0.000	0.000	0.000	0.349	-	-	0.000	0.000	0.000	0.349	-	-	-	-	0.000	0.000	0.000	0.002	-	-	0.000	0.000	0.000	0.001	-	-	-	-	0.002	0.002			
0.300	0.000	0.000	0.000	0.249	-	-	0.000	0.000	0.000	0.251	-	-	-	-	0.000	0.000	0.000	0.005	-	-	0.000	0.000	0.000	0.001	-	-	-	-	0.003	0.003			
0.400	0.000	0.000	0.000	0.149	-	-	0.000	0.000	0.000	0.160	-	-	-	-	0.000	0.000	0.000	0.002	-	-	0.000	0.000	0.000	0.011	-	-	-	-	0.004	0.004			
0.500	0.000	0.000	0.000	0.051	-	205	0.000	0.000	0.000	0.091	-	-	-	-	0.000	0.000	0.000	0.002	-	-	0.000	0.000	0.000	0.041	-	-	-	-	0.005	0.005			
0.600	0.000	0.000	0.000	0.002	-	-	0.000	0.000	0.000	0.046	-	-	-	-	0.000	0.000	0.000	0.053	-	-	0.000	0.000	0.000	0.096	-	-	-	-	0.006	0.006			
0.700	0.000	0.000	0.000	0.001	-	-	0.000	0.000	0.000	0.022	-	-	-	-	0.000	0.000	0.000	0.151	-	-	0.000	0.000	0.000	0.172	-	-	-	-	0.007	0.007			
0.800	0.000	0.000	0.000	0.002	-	-	0.000	0.000	0.000	0.010	-	-	-	-	0.000	0.000	0.000	0.251	-	-	0.000	0.000	0.000	0.260	-	-	-	-	0.008	0.008			
0.900	0.000	0.000	0.000	0.001	-	-	0.000	0.000	0.000	0.004	-	-	-	-	0.000	0.000	0.000	0.351	-	-	0.000	0.000	0.000	0.354	-	-	-	-	0.009	0.009			
1.000	0.000	0.000	0.000	0.001	-	-	-	-	-	-	-	-	-	-	0.000	0.000	0.000	0.451	-	-	-	-	-	-	-	-	-	-	0.010	0.010			
1.100	0.000	0.000	0.000	0.001	-	-	-	-	-	-	-	-	-	-	0.000	0.000	0.000	0.551	-	-	-	-	-	-	-	-	-	-	0.011	0.011			
1.200	0.000	0.000	0.000	0.001	-	-	-	-	-	-	-	-	-	-	0.000	0.000	0.000	0.651	-	-	-	-	-	-	-	-	-	-	0.012	0.012			
1.300	0.000	0.000	0.000	0.001	-	-	-	-	-	-	-	-	-	-	0.000	0.000	0.000	0.751	-	-	-	-	-	-	-	-	-	-	0.013	0.013			
1.400	0.000	0.000	0.000	0.001	-	-	-	-	-	-	-	-	-	-	0.000	0.000	0.000	0.851	-	-	-	-	-	-	-	-	-	-	0.014	0.014			
1.500	0.000	0.000	0.000	0.001	-	-	-	-	-	-	-	-	-	-	0.000	0.000	0.000	0.951	-	-	-	-	-	-	-	-	-	-	0.015	0.015			
1.600	0.000	0.000	0.000	0.001	-	-	-	-	-	-	-	-	-	-	0.000	0.000	0.000	1.05	-	-	-	-	-	-	-	-	-	-	0.016	0.016			
1.700	-	-	-	-	-	-	-	-	-	-	-	-	-	-	-	-	-	-	-	-	-	-	-	-	-	-	-	-	0.017	0.017			
1.800	-	-	-	-	-	-	-	-	-	-	-	-	-	-	-	-	-	-	-	-	-	-	-	-	-	-	-	-	0.018	0.018			
1.900	-	-	-	-	-	-	-	-	-	-	-	-	-	-	-	-	-	-	-	-	-	-	-	-	-	-	-	-	0.019	0.019			
Totals:					0	205					0	0		0							0	0						0	0				
Number of Trades:						0					0			0								0.00						0		0			

OPAP (CR)

(Contract Size: 100 Securities, Exercise Style: American, Physical Delivery)

Exercise Price	Call Options														Put Options																		
	October 2015						November 2015						Other Months		October 2015						November 2015						Other Months		Exercise Price				
	Open price	Price max	Price min	Last price	Closing price	Volume	Open Interest	Open price	Price max	Price min	Last price	Closing price	Volume	Open Interest	Volume	Open Interest	Open price	Price max	Price min	Last price	Closing price	Volume	Open Interest	Open price	Price max	Price min	Last price	Closing price		Volume	Open Interest	Volume	Open Interest
5.600	0.000	0.000	0.000		2.59	-	-	0.000	0.000	0.000		2.61	-	-			0.000	0.000	0.000		0.001	-	-	0.000	0.000	0.000		0.012		-	-		
6.000	0.000	0.000	0.000		2.19	-	-	0.000	0.000	0.000		2.23	-	-			0.000	0.000	0.000		0.001	-	-	0.000	0.000	0.000		0.031	-	-			0.060
6.400	0.000	0.000	0.000		1.79	-	-	0.000	0.000	0.000		1.87	-	-			0.000	0.000	0.000		0.002	-	-	0.000	0.000	0.000		0.068	-	-			0.064
6.800	0.000	0.000	0.000		1.39	-	-	0.000	0.000	0.000		1.53	-	-			0.000	0.000	0.000		0.002	-	-	0.000	0.000	0.000		0.130	-	-			0.068
7.200	0.000	0.000	0.000		0.991	-	-	0.000	0.000	0.000		1.23	-	-			0.000	0.000	0.000		0.001	-	20	0.000	0.000	0.000		0.226	-	-			0.072
7.600	0.000	0.000	0.000		0.602	-	-	0.000	0.000	0.000		0.964	-	-			0.000	0.000	0.000		0.011	-	100	0.000	0.000	0.000		0.359	-	-			0.076
8.000	0.000	0.000	0.000		0.273	-	-	0.000	0.000	0.000		0.740	-	-			0.000	0.000	0.000		0.082	-	50	0.000	0.000	0.000		0.534	-	-			0.080
8.400	0.000	0.000	0.000		0.080	-	-	0.000	0.000	0.000		0.555	-	-			0.000	0.000	0.000		0.289	-	-	0.000	0.000	0.000		0.749	-	-			0.084
8.800	0.000	0.000	0.000		0.013	-	-	0.000	0.000	0.000		0.407	-	-			0.000	0.000	0.000		0.623	-	-	0.000	0.000	0.000		1.00	-	-			0.088
9.200	0.000	0.000	0.000		0.001	-	-	0.000	0.000	0.000		0.290	-	-			0.000	0.000	0.000		1.01	-	-	0.000	0.000	0.000		1.28	-	-			0.092
9.600	0.000	0.000	0.000		0.002	-	-	0.000	0.000	0.000		0.205	-	-			0.000	0.000	0.000		1.41	-	-	0.000	0.000	0.000		1.60	-	-			0.096
10.000						-	-						-	-								-	-					-	-				0.100
11.000						-	-						-	-								-	-					-	-				0.110
12.000						-	-						-	-								-	-					-	-				0.120
Totals:						0	0						0	0	0	0					0	170						0	0	0	0	0	
Number of Trades:						0							0		0							0.00						0		0			

OTE (CR)

(Contract Size: 100 Securities, Exercise Style: American, Physical Delivery)

Exercise Price	Call Options														Put Options																				
	October 2015						November 2015						Other Months		October 2015						November 2015						Other Months		Exercise Price						
	Open price	Price max	Price min	Last price	Closing price	Volume	Open Interest	Open price	Price max	Price min	Last price	Closing price	Volume	Open Interest	Volume	Open Interest	Open price	Price max	Price min	Last price	Closing price	Volume	Open Interest	Open price	Price max	Price min	Last price	Closing price		Volume	Open Interest	Volume	Open Interest		
5.600						-	-							-	-																				
6.000	0.000	0.000	0.000		2.65	-	-	0.000	0.000	0.000		2.68	-	-			0.000	0.000	0.000		0.008	-	-	0.000	0.000	0.000		0.014	-	-			0.060		
6.400	0.000	0.000	0.000		2.25	-	-	0.000	0.000	0.000		2.30	-	-			0.000	0.000	0.000		0.001	-	-	0.000	0.000	0.000		0.034	-	-			0.064		
6.800	0.000	0.000	0.000		1.85	-	-	0.000	0.000	0.000		1.94	-	-			0.000	0.000	0.000		0.002	-	-	0.000	0.000	0.000		0.072	-	-			0.068		
7.200	0.000	0.000	0.000		1.45	-	-	0.000	0.000	0.000		1.60	-	-			0.000	0.000	0.000		0.002	-	-	0.000	0.000	0.000		0.134	-	-			0.072		
7.600	0.000	0.000	0.000		1.05	-	-	0.000	0.000	0.000		1.29	-	-			0.000	0.000	0.000		0.001	-	-	0.000	0.000	0.000		0.228	-	-			0.076		
8.000	0.000	0.000	0.000		0.656	-	5	0.000	0.000	0.000		1.02	-	-			0.000	0.000	0.000		0.005	-	-	0.000	0.000	0.000		0.359	-	-			0.080		
8.400	0.000	0.000	0.000		0.306	-	-	0.000	0.000	0.000		0.795	-	-			0.000	0.000	0.000		0.055	-	5	0.000	0.000	0.000		0.528	-	-			0.084		
8.800	0.000	0.000	0.000		0.089	-	-	0.000	0.000	0.000		0.603	-	-			0.000	0.000	0.000		0.238	-	-	0.000	0.000	0.000		0.736	-	-			0.088		
9.200	0.000	0.000	0.000		0.013	-	-	0.000	0.000	0.000		0.446	-	-			0.000	0.000	0.000		0.563	-	-	0.000	0.000	0.000		0.980	-	-			0.092		
9.600	0.000	0.000	0.000		0.001	-	-	0.000	0.000	0.000		0.324	-	-			0.000	0.000	0.000		0.951	-	-	0.000	0.000	0.000		1.26	-	-			0.096		
10.000						-	-						-	-								-	-										0.100		
11.000						-	-						-	-								-	-										0.110		
12.000						-	-						-	-								-	-										0.120		
Totals:						0	5					0	0	0	0						0	5						0	0	0	0				
Number of Trades:						0						0		0							0.00						0		0						

PIRAEUS BANK (CR)

(Contract Size: 100 Securities, Exercise Style: American, Physical Delivery)

Exercise Price	Call Options														Put Options																		
	October 2015						November 2015						Other Months		October 2015						November 2015						Other Months		Exercise Price				
	Open price	Price max	Price min	Last price	Closing price	Volume	Open Interest	Open price	Price max	Price min	Last price	Closing price	Volume	Open Interest	Volume	Open Interest	Open price	Price max	Price min	Last price	Closing price	Volume	Open Interest	Open price	Price max	Price min	Last price	Closing price		Volume	Open Interest	Volume	Open Interest
0.100	0.000	0.000	0.000	0.001	-	20	0.000	0.000	0.000	0.001	-	-					0.000	0.000	0.000	0.030	-	-	0.000	0.000	0.000	0.031	-	-					0.001
0.200	0.000	0.000	0.000	0.001	-	-	0.000	0.000	0.000	0.001	-	-					0.000	0.000	0.000	0.130	-	-	0.000	0.000	0.000	0.130	-	-				0.002	
0.300	0.000	0.000	0.000	0.001	-	-	0.000	0.000	0.000	0.001	-	-					0.000	0.000	0.000	0.230	-	-	0.000	0.000	0.000	0.230	-	-				0.003	
0.400	0.000	0.000	0.000	0.002	-	-	0.000	0.000	0.000	0.001	-	-					0.000	0.000	0.000	0.330	-	-	0.000	0.000	0.000	0.330	-	-				0.004	
0.500	0.000	0.000	0.000	0.001	-	-	0.000	0.000	0.000	0.001	-	-					0.000	0.000	0.000	0.430	-	-	0.000	0.000	0.000	0.430	-	-				0.005	
0.600	0.000	0.000	0.000	0.001	-	-					-	-					0.000	0.000	0.000	0.530	-	-					-	-				0.006	
0.700	0.000	0.000	0.000	0.001	-	-					-	-					0.000	0.000	0.000	0.630	-	-					-	-				0.007	
0.800	0.000	0.000	0.000	0.001	-	-					-	-					0.000	0.000	0.000	0.730	-	-					-	-				0.008	
0.900					-	-					-	-									-	-						-	-				0.009
1.000					-	-					-	-									-	-						-	-				0.010
1.100					-	-					-	-									-	-						-	-				0.011
1.200					-	-					-	-									-	-						-	-				0.012
1.300					-	-					-	-									-	-						-	-				0.013
1.400					-	-					-	-									-	-						-	-				0.014
Totals:						0	20					0	0	0	0						0	0						0	0	0	0		
Number of Trades:						0						0		0							0.00							0		0			

PPC (CR)

(Contract Size: 100 Securities, Exercise Style: American, Physical Delivery)

Exercise Price	Call Options														Put Options														Exercise Price	
	October 2015				November 2015				Other Months		October 2015				November 2015				Other Months											
	Open price	Price max	Price min	Last price	Closing price	Volume	Open Interest	Open price	Price max	Price min	Last price	Closing price	Volume	Open Interest	Volume	Open Interest	Open price	Price max	Price min	Last price	Closing price	Volume	Open Interest	Volume	Open Interest					
3.000						-	-																				0.030			
3.200	0.000	0.000	0.000		1.80	-	-	0.000	0.000	0.000		1.81	-	-			0.000	0.000	0.000		0.002	-	-	0.000	0.000	0.000	0.005	-	-	0.032
3.400	0.000	0.000	0.000		1.60	-	-	0.000	0.000	0.000		1.62	-	-			0.000	0.000	0.000		0.001	-	-	0.000	0.000	0.000	0.012	-	-	0.034
3.600	0.000	0.000	0.000		1.40	-	-	0.000	0.000	0.000		1.43	-	-			0.000	0.000	0.000		0.002	-	-	0.000	0.000	0.000	0.023	-	-	0.036
3.800	0.000	0.000	0.000		1.20	-	-	0.000	0.000	0.000		1.25	-	-			0.000	0.000	0.000		0.002	-	-	0.000	0.000	0.000	0.042	-	-	0.038
4.000	0.000	0.000	0.000		1.00	-	-	0.000	0.000	0.000		1.08	-	-			0.000	0.000	0.000		0.007	-	-	0.000	0.000	0.000	0.071	-	-	0.040
4.400	0.000	0.000	0.000		0.603	-	-	0.000	0.000	0.000		0.773	-	-			0.000	0.000	0.000		0.002	-	-	0.000	0.000	0.000	0.165	-	-	0.044
4.800	0.000	0.000	0.000		0.250	-	-	0.000	0.000	0.000		0.530	-	-			0.000	0.000	0.000		0.049	-	50	0.000	0.000	0.000	0.320	-	-	0.048
5.200	0.000	0.000	0.000		0.054	-	-	0.000	0.000	0.000		0.345	-	-			0.000	0.000	0.000		0.253	-	-	0.000	0.000	0.000	0.535	-	-	0.052
5.600	0.000	0.000	0.000		0.005	-	-	0.000	0.000	0.000		0.214	-	-			0.000	0.000	0.000		0.605	-	-	0.000	0.000	0.000	0.803	-	-	0.056
6.000	0.000	0.000	0.000		0.002	-	-	0.000	0.000	0.000		0.127	-	-			0.000	0.000	0.000		1.00	-	-	0.000	0.000	0.000	1.12	-	-	0.060
6.400	0.000	0.000	0.000		0.001	-	-						-	-			0.000	0.000	0.000		1.40	-	-					-	-	0.064
6.800						-	-						-	-								-	-					-	-	0.068
7.200						-	-						-	-								-	-					-	-	0.072
7.600						-	-						-	-								-	-					-	-	0.076
8.000						-	-						-	-								-	-					-	-	0.080
8.400						-	-						-	-								-	-					-	-	0.084
Totals:						0	0					0	0	0	0						0	50			0	0	0	0	0	
Number of Trades:						0						0		0							0.00			0		0				

Lending Products	Underlying Title	Multilateral Transactions[1]					Bilateral Transactions[2]		Stock Borrowing through OTC (volume)[3]
		Open Interest[5]	Volume(Offered)	Average Weighted	Transactions volume	Average Weighted	Transactions Volume	Average Weighted	Transactions Volume
AEGNBOR	AEGEAN AIRLINES (CR)	248	16,266	5.31%	---	---	---	---	11,701
ALPHABOR	ALPHA BANK (CR)	7,368,034	8,000	5.31%	---	---	---	---	35,532,193
AETFBOR	ALPHA ETF FTSE Athex Large Cap	---	---	---	---	---	---	---	---
ALMYBOR	ALUMIL (CR)	---	---	---	---	---	---	---	---
IATRBOR	ATHENS MEDICAL CENTER SA (CR)	---	40,980	5.31%	---	---	---	---	---
OTOELBOR	AUTOHELLAS SA (CR)	---	958	5.31%	---	---	---	---	---
EEEBOR	CC HBC AG (CR)	5,780	1,360	5.31%	1,360	8.65%	---	---	70,546
CENTRBOR	CENTRIC HOLDINGS (CR)	---	16,000	5.31%	---	---	---	---	---
SOLKBOR	CORINTH PIPEWORKS SA (CR)	---	---	---	---	---	---	---	---
PLAKRBOR	CRETE PLASTICS SA (CR)	---	---	---	---	---	---	---	---
ELLAKTORBOR	ELLAKTOR (CR)	16,507	76,396	5.31%	8,488	3.64%	---	---	---
ANEMOSBOR	ELTECH ANEMOS S.A. (CR)	---	---	---	---	---	---	---	---
ELBABOR	ELVAL HOLDINGS (CB)	---	35,344	5.31%	---	---	---	---	---
EUROBBOR	EUROBANK ERGASIAS (CR)	1,596,448	1,598	3.31%	1,598	3.31%	---	---	7,162,054
EUROCBOR	EUROCONSULTANTS S.A. (CR)	---	---	---	---	---	---	---	---
EUPICBOR	EUROPEAN RELIANCE INSUR. (CR)	---	---	---	---	---	---	---	---
EYDAPBOR	EYDAP S.A. (CR)	4,706	479	5.31%	---	---	---	---	17,780
FGEBOR	F.G. EUROPE S.A. (CR)	---	---	---	---	---	---	---	---
FFGRPBOR	FOLLI FOLLIE (CR)	10,093	68,749	5.31%	---	---	---	---	505,938
FOYRKBOR	FOURLIS (CR)	---	5,130	5.31%	---	---	---	---	3,850
FRIGOBOR	FRIGOGLOSS SA (CR)	2,927	4,785	5.31%	---	---	---	---	---
GEKTERNABOR	GEK TERNA (CR)	2,882	32,481	5.31%	---	---	---	---	---
SARBOR	GR. SARANTIS SA (CR)	---	4,199	5.31%	---	---	---	---	---
EUPROBOR	GRIVALIA PROPERTIES (CR)	16,883	73,224	5.31%	---	---	---	---	35,067
XAKOBOR	HALKOR SA (CB)	---	50,550	5.31%	---	---	---	---	---
EXAEBOR	HELLENIC EXCHANGES-A.S.E. (CR)	12,800	484,278	5.31%	---	---	---	---	65,000
ELPEBOR	HELLENIC PETROLEUM (CR)	400	225,602	5.31%	---	---	---	---	44,796
HYGEIABOR	HYGEIA SA (CR)	---	48,700	5.31%	---	---	---	---	---
IASOBOR	IASO SA (CR)	---	---	---	---	---	---	---	---
IKTINBOR	IKTINOS HELLAS SA (CR)	---	---	---	---	---	---	---	---
LYKBOR	INFORM P. LYKOS SA (CR)	---	---	---	---	---	---	---	---

Stock Lending Notes

[1] - Multilateral contracts Lending or Borrowing as per Methods 8-1, 8-2 and 8-3-3 (According to ATHEX BoD Resolution No.17)

[2] - Bilateral Contracts Lending or Borrowing as per Methods 8-3-1 and 8-3-2 (According to ATHEX BoD Resolution No.20)

[3] - The information concerning OTC Stock Borrowing Transactions is based on the statements of the Dematerialised Securities System (DSS) operators involved and refers to volumes that have been cleared and registered up until the previous working day.

[4] - Average Price (Volume weighted)

[5] - The Data concerning Open Interest before the start of trading session

Lending Products	Underlying Title	Multilateral Transactions[1]					Bilateral Transactions[2]		Stock Borrowing through OTC (volume)[3]
		Open Interest[5]	Volume(Offered)	Average Weighted	Transactions volume	Average Weighted	Transactions Volume	Average Weighted	Transactions Volume
INTRKBOR	INTRACOM HOLDINGS (CR)	---	168,546	5.31%	---	---	---	---	---
INLOTBOR	INTRALOT (CR)	12,931	52,489	5.31%	---	---	---	---	1,000
AVAXBOR	J & P - AVAX SA (CR)	---	20,335	5.31%	---	---	---	---	---
BELABOR	JUMBO SA (CR)	9,617	130,480	5.31%	---	---	---	---	14,555
KLEMBOR	KLEEMAN HELLAS SA (CR)	---	23,432	5.31%	---	---	---	---	---
KORRESBOR	KORRES (CR)	---	---	---	---	---	---	---	---
KRIBOR	KRI-KRI S.A. (CR)	---	47,267	5.31%	---	---	---	---	---
KYRMBOR	KYRIAKIDIS MARBLES SA (CR)	---	---	---	---	---	---	---	---
LAMDABOR	LAMDA DEVELOPMENT SA (CR)	103	29	5.34%	---	---	---	---	10,377
MIGBOR	MARFIN INVESTMENT GROUP (CR)	2,375	101,792	5.31%	---	---	---	---	744,474
METKKBOR	METKA (CR)	400	21,401	5.31%	---	---	---	---	965
MLSBOR	MLS MULTIMEDIA SA (CR)	---	7,920	5.31%	---	---	---	---	---
MOHBOR	MOTOR OIL (CR)	76,320	1,608	5.31%	---	---	---	---	35,900
MYTILBOR	MYTILINEOS HOLDINGS (CR)	2,230	135,670	5.31%	---	---	---	---	---
ETEBOR	NATIONAL BANK (CR)	332,734	4,072	5.31%	4,072	5.31%	---	---	1,003,403
ETFASEBOR	NBGAM ETF	---	---	---	---	---	---	---	---
ETFGT3OPBOR	NBGAM ETF GREECE & TURKEY 30	---	---	---	---	---	---	---	---
OPAPBOR	OPAP (CR)	44,935	224,017	5.31%	---	---	---	---	122,015
HTOBOR	OTE (CR)	59,200	21,660	3.55%	21,660	3.55%	---	---	311,742
PPABOR	P.P.A. S.A. (CR)	796	1	10.15%	1	10.15%	---	---	151
PETROBOR	PETROPOULOS PETROS (CR)	---	---	---	---	---	---	---	---
TPEIRBOR	PIRAEUS BANK (CR)	335,753	842	3.31%	842	3.31%	---	---	15,168,200
PLAISBOR	PLAISIO COMPUTERS SA (CR)	---	---	---	---	---	---	---	---
PPCBOR	PPC (CR)	23,516	90,576	5.31%	---	---	---	---	602,112
PROFBOR	PROFILE SA (CR)	---	---	---	---	---	---	---	---
QUALBOR	QUALITY & RELIABILITY SA (CR)	---	---	---	---	---	---	---	---
QUESTBOR	QUEST HOLDINGS (CR)	---	43	5.30%	---	---	---	---	---
KAMPBOR	REDS S.A. (CR)	---	---	---	---	---	---	---	---
OLYMPBOR	TECHNICAL OLYMPIC SA (CR)	---	245	5.31%	---	---	---	---	---
TENERGYBOR	TERNA ENERGY (CR)	5,523	25,590	5.31%	---	---	---	---	---
EYAPSBOR	THESSALONIKA WATER & SEWERAGE	---	798	5.31%	---	---	---	---	---

Stock Lending Notes

[1] - Multilateral contracts Lending or Borrowing as per Methods 8-1, 8-2 and 8-3-3 (According to ATHEX BoD Resolution No.17)

[2] - Bilateral Contracts Lending or Borrowing as per Methods 8-3-1 and 8-3-2 (According to ATHEX BoD Resolution No.20)

[3] - The information concerning OTC Stock Borrowing Transactions is based on the statements of the Dematerialised Securities System (DSS) operators involved and refers to volumes that have been cleared and registered up until the previous working day.

[4] - Average Price (Volume weighted)

[5] - The Data concerning Open Interest before the start of trading session

Lending Products	Underlying Title	Multilateral Transactions[1]					Bilateral Transactions[2]		Stock Borrowing through OTC (volume)[3]
		Open Interest[5]	Volume(Offered)	Average Weighted	Transactions volume	Average Weighted	Transactions Volume	Average Weighted	Transactions Volume
PLATBOR	THRACE PLASTICS SA (CR)	---	42,700	5.31%	---	---	---	---	---
TITKBOR	TITAN CEMENT (CR)	4,300	249,210	5.31%	1,000	2.65%	---	---	3,204
OLTHBOR	TPA SA (CR)	---	3,462	5.31%	---	---	---	---	---
VIOBOR	VIOHALCO SA/NV (CB)	14,716	18,869	5.31%	---	---	---	---	---

Stock Lending Notes

[1] - Multilateral contracts Lending or Borrowing as per Methods 8-1, 8-2 and 8-3-3 (According to ATHEX BoD Resolution No.17)

[2] - Bilateral Contracts Lending or Borrowing as per Methods 8-3-1 and 8-3-2 (According to ATHEX BoD Resolution No.20)

[3] - The information concerning OTC Stock Borrowing Transactions is based on the statements of the Dematerialised Securities System (DSS) operators involved and refers to volumes that have been cleared and registered up until the previous working day.

[4] - Average Price (Volume weighted)

[5] - The Data concerning Open Interest before the start of trading session

Sectors codification for listed companies

533	-	Exploration & Production	537	-	Integrated Oil & Gas
1353	-	Commodity Chemicals	1357	-	Specialty Chemicals
1753	-	Aluminum	1755	-	Nonferrous Metals
1757	-	Steel	1775	-	General Mining
2353	-	Building Materials & Fixtures	2357	-	Heavy Construction
2723	-	Containers & Packaging	2727	-	Diversified Industrials
2733	-	Electrical Components & Equipment	2753	-	Commercial Vehicles & Trucks
2757	-	Industrial Machinery	2773	-	Marine Transportation
2777	-	Transportation Services	2791	-	Business Support Services
2797	-	Industrial Suppliers	3535	-	Distillers & Vintners
3537	-	Soft Drinks	3573	-	Farming Fishing & Plantations
3577	-	Food Products	3722	-	Durable Household Products
3726	-	Furnishings	3728	-	Home Construction
3747	-	Toys	3763	-	Clothing & Accessories
3765	-	Footwear	3767	-	Personal Products
3785	-	Tobacco	4533	-	Health Care Providers
4535	-	Medical Equipment	4577	-	Pharmaceuticals
5337	-	Food Retailers & Wholesalers	5371	-	Apparel Retailers
5373	-	Broadline Retailers	5375	-	Home Improvement Retailers
5379	-	Specialty Retailers	5553	-	Broadcasting & Entertainment
5555	-	Media Agencies	5557	-	Publishing
5751	-	Airlines	5752	-	Gambling
5753	-	Hotels	5755	-	Recreational Services
5757	-	Restaurants & Bars	5759	-	Travel & Tourism
6535	-	Fixed Line Telecommunications	6575	-	Mobile Telecommunications
7535	-	Conventional Electricity	7537	-	Alternative Electricity
7577	-	Water	8355	-	Banks
8534	-	Insurance Brokers	8536	-	Property & Casualty Insurance
8633	-	Real Estate Holding & Development	8637	-	Real Estate Services
8671	-	Industrial & Office REITs	8675	-	Specialty REITs
8775	-	Specialty Finance	8777	-	Investment Services
8985	-	Equity Investment Instruments	9533	-	Computer Services
9535	-	Internet	9537	-	Software
9572	-	Computer Hardware	9574	-	Electronic Office Equipment
9578	-	Telecommunications Equipment	12003	-	ETF



ATHEXGROUP
Ομίλος Χρηματιστηρίου Αθηνών

Λεωφ. Αθηνών 110 104 42 Αθήνα
110, Athinon Ave. GR 104 42 Athens
tel. (+30)210-33.66.800, fax (+30)210-33.66.101
www.athexgroup.gr