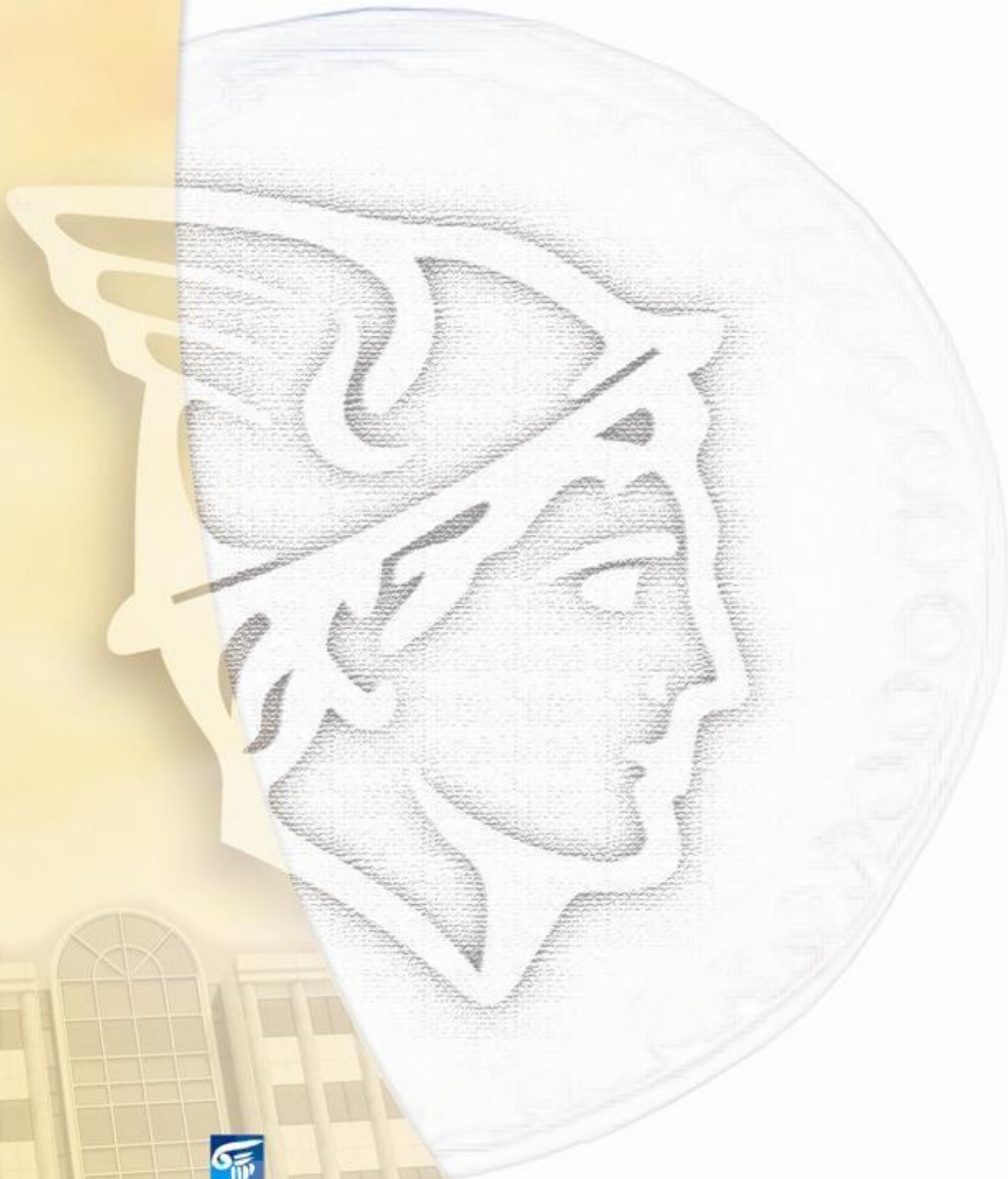


# Daily Official List

Athens Exchange sa

Tuesday, 19 February, 2013  
Year: 134 Trading Day No: 35



ΟΜΙΛΟΣ ΕΛΛΗΝΙΚΑ ΧΡΗΜΑΤΙΣΤΗΡΙΑ  
HELLENIC EXCHANGES GROUP

**Disclaimer:**

Athens Exchange (ATHEX) endeavours to ensure that the data and other material ("Information") presented on the Daily Official List are accurate and complete, but it is not liable for any errors or omissions of data or /and for the accuracy, credibility, updating and completeness of the aforesaid information nor it has any liability arising directly or indirectly from the use of the above Information.

ATHEX is not liable for the accuracy of the data included in listed companies' announcements. Only the sender of such an announcement is fully and solely liable for any infringement of third party's rights from the content of such announcement. All contents of the Daily Official List are provided only for information purposes and do not constitute investment advice or solicitation to invest in securities or other products listed for trading on ATHEX.

You acknowledge and agree that ATHEX is the owner of any property rights related to any Information appearing on the Daily Official List including intellectual property rights copyright, trademarks, etc.

The above data are a property of the Athens Exchange and are copyright protected. Users are forbidden to reproduce, modify, copy, sale, transmit or redistribute, by all reproduction means and methods, part or the whole of the above data, without reference to their source.

The commercial exploitation of these data is, also, forbidden by third parties. Athens Exchange does not carry any responsibility, direct or indirect, derived from usage or accidental alteration of the above data when used by third parties.

**Athens Exchange sa**

110 Athinon Ave., 10442 Athens, Tel: (210) 33.66.800, Fax: (210) 32.13.938

[www.athex.gr](http://www.athex.gr)

**Thessalonica Stock Exchange Center (T.S.E.C)**

16-18 Katouni Str., Thessalonica 546 25 Tel: (2310) 567.667, Fax: (2310) 530.545

**Athex Members Guarantee Fund**

14-16 Fidiou Str., Athens 106 78, Tel: (210) 33.04.682, Fax: (210) 33.04.155

**Hellenic Republic Capital Market Commission**

1 Kolokotroni Str. & 1 Stadiou Str., Athens 10562 Tel: (210) 33.77.100 Fax: (210) 33.77.173

---

**Table of Contents**

---

**Section 1: Statistical Figures of Stocks, Bonds and Derivatives Market**

Summary of Markets

Athex Indices

Analytic Figures for Athex Market's Boards and Categories

Trading Details by Sector

Top 10 best &amp; worst performing Shares

Derivatives Summary

**Section 2: Analytic Figures of Shares Transactions**

Analytic Figures of Shares Transactions

Shares' Notes

**Section 3: Figures of Shares Transactions**

Shares Blocks Details

Shares Rights Details

Shares Short Selling

Stock Borrowing

Shares Forced Sales

Forced Sales Registered Shares

Exchange Traded Funds (ETFs) Characteristics

**Section 5: Bonds traded in Fixed Income Assets Market**

Corporate Bonds

Government Bonds

Treasury Bills &amp; Zero Coupon Government Bonds

Government Bonds Traded with the Open Outcry Method

State Banks Bonds

**Section 6: Additional Infos**

Athex &amp; ATHEXClear Members List

List of Stocks under Market Making operations

**Section 7: Derivatives Market Analytic Figures**

Index Futures

Stock Futures

Index Options

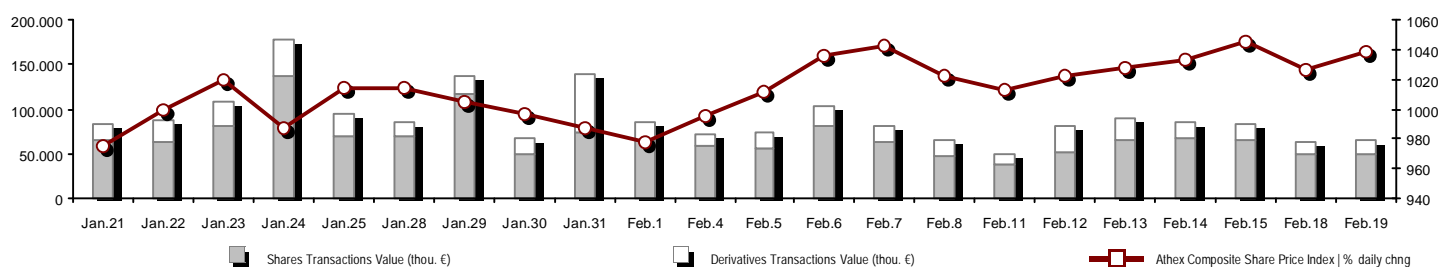
Stock Options

Stock Lending Analytic Figures (Repo Contracts)

**Appendix A: Sectors codification for listed companies**

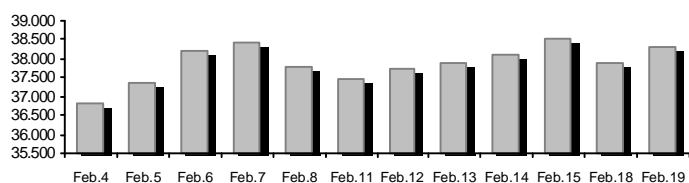
Summary of Markets

Athex Composite Share Price Index vs Shares and Derivatives Transactions Value

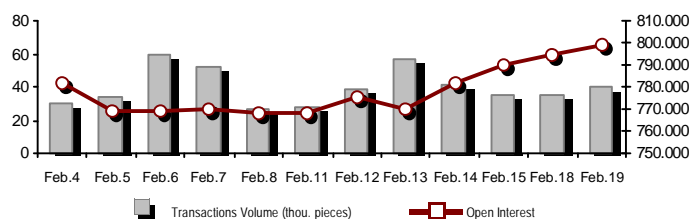


<b>Total Transactions Value (Shares/Derivatives) (thou. €):</b>	<b>66.188,69</b>		
<b>Athex Capitalisation (mill. €):</b>	<b>38.286,97</b>	<b>Derivatives Total Open Interest</b>	<b>798.728</b>
Daily change: mill. €   %	376,53   0,99%	in Index Futures   % daily chng	39.163   1,62%
Yearly Avg Capitalisation: mill. €   % chng prev year Avg	36.910,77   39,89%	in Stock Futures   % daily chng	390.884   0,43%
<b>Athex Composite Share Price Index   % daily chng</b>	<b>1.038,26   1,12%</b>	in Index Options   % daily chng	4.740   11,98%
<b>Athex Composite Share Price Index Capitalisation (mill. €)</b>	<b>33.788,37</b>	in Stock Options   % daily chng	6.844   1,62%
Daily change (mill. €)	372,52	in Stock Repos/Reverse Repos/RA   % daily chng	357.097   0,49%
<b>Shares Transactions Value (thou. €)</b>	<b>50.447,96</b>	<b>Derivatives Transactions Value (thou. €)</b>	<b>15.740,73</b>
Daily change: thou. €   %	1.404,89   2,86%	Daily change: thou. €   %	1.047,47   7,13%
YtD Avg Trans. Value: thou. €   % chng prev year Avg	66.221,70   27,66%	YtD Avg Trans. Value: thou. €   % chng prev year Avg	21.772,03   -40,76%
Short Selling Trans. Value: mill. €   % in total Value			
Short Covering Trans. Value: mill. €   % in total Value			
<b>Blocks of Shares Transactions Value (thou. €)</b>	<b>0,00</b>		
<b>Bonds Transactions Value (thou. €)</b>	<b>75,43</b>		
<b>Shares Transactions Volume (thou. pieces)</b>	<b>37.314,07</b>	<b>Derivatives Contracts Volume:</b>	<b>40.093</b>
Daily change: thou. pieces   %	7.759,26   26,25%	Daily change: pieces   %	5.047   14,40%
YtD Avg Volume: thou. pieces   % chng prev year Avg	41.773,00   -15,52%	YtD Avg Derivatives Contracts   % chng prev year Avg	55.728   -13,40%
Short Selling Volume: thou pieces   % in total Volume			
Short Covering Volume: thou. pieces   % in total Volume			
<b>Blocks of Shares Transactions Volume (thou. pieces)</b>	<b>0,00</b>		
<b>Bonds Transactions Volume (thou. pieces)</b>	<b>306,00</b>		
<b>Shares Trades Number</b>	<b>19.876</b>	<b>Derivatives Trades Number:</b>	<b>2.125</b>
Daily change: number   %	-822   -3,97%	Daily change: number   %	190   9,82%
YtD Avg Derivatives Trades number   % chng prev year Avg	29.994   20,90%	YtD Avg Derivatives Trades number   % chng prev year Avg	2.880   -1,19%
<b>Number of Blocks of Shares</b>	<b>0</b>		
<b>Number of Bonds Transactions</b>	<b>32</b>		

Athex Capitalisation (mill. €)



Derivatives Transactions Volume and Open Interest



Daily Fluctuation of Athex Composite Share Price Index



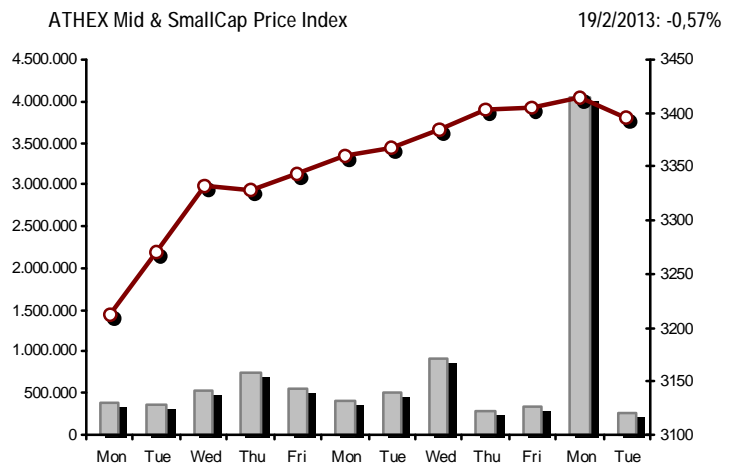
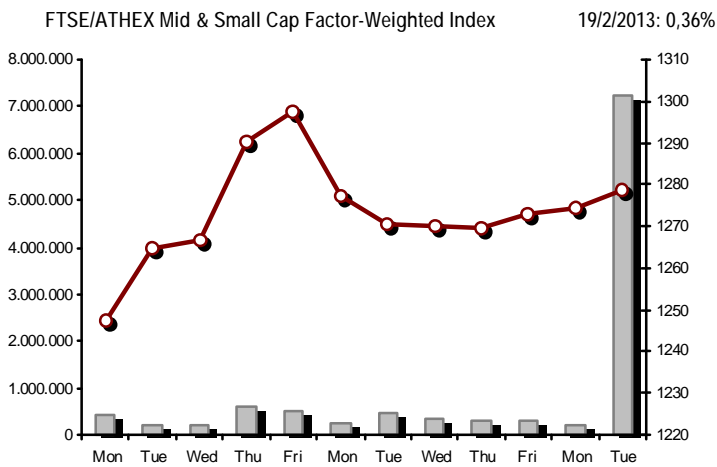
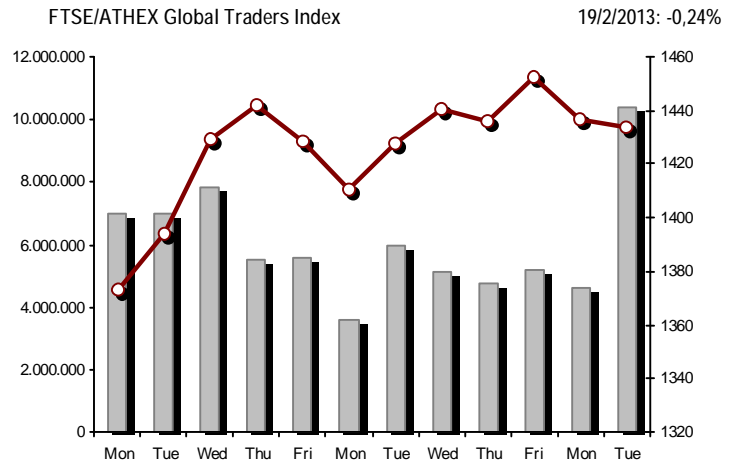
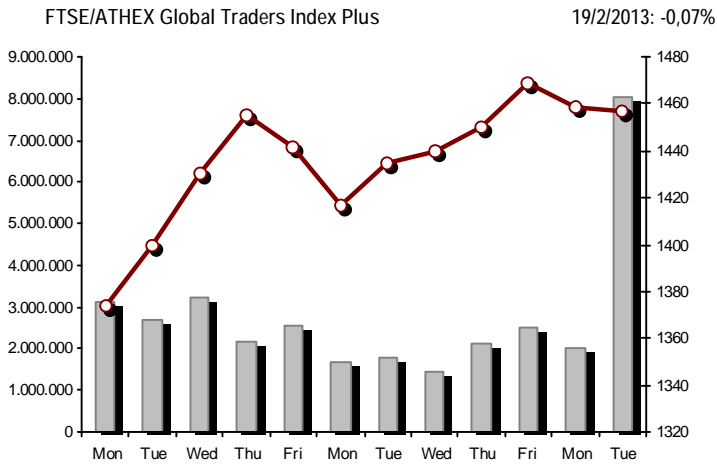
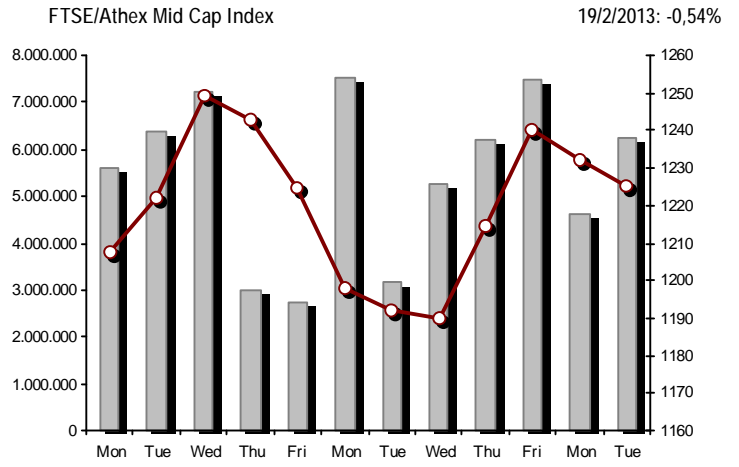
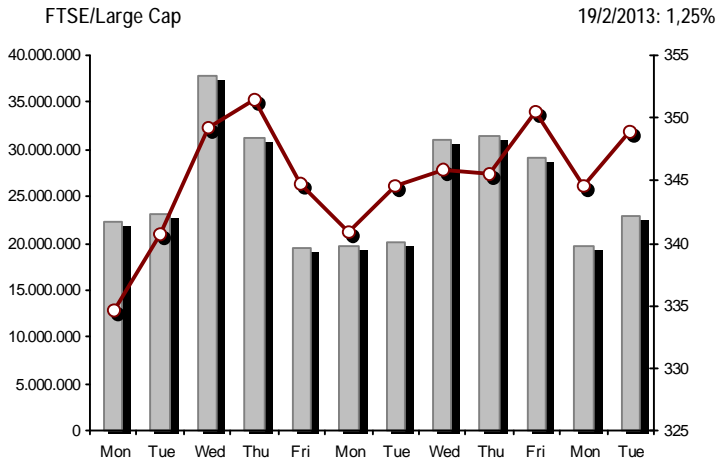
## Athex Indices

Index name	19/2/2013	18/2/2013	pts.	%	Min	Max	Year min	Year max	Year change
Athex Composite Share Price Index	1.038,26 p	1.026,81	11,45	1,12%	1.020,10	1.038,26	914,01	1.052,83	14,36% p
FTSE/Athex Large Cap	348,87 p	344,57	4,30	1,25%	341,85	348,87	312,46	354,93	12,65% p
FTSE/ATHEX Capped 20	1.134,19 s	1.153,61	-19,42	-1,68%			1.006,52	1.155,27	11,26% p
FTSE/ATHEX Capped 20 -USD	1.085,65 s	1.104,18	-18,53	-1,68%			1.007,73	1.114,56	12,67% p
FTSE/Athex Mid Cap Index	1.225,26 s	1.231,96	-6,70	-0,54%	1.219,21	1.243,63	1.138,76	1.338,16	8,12% p
FTSE/ATHEX-CSE Banking Index	142,26 p	137,89	4,37	3,17%	137,96	142,88	134,79	192,07	-15,76% s
FTSE/ATHEX Global Traders Index Plus	1.457,21 s	1.458,30	-1,09	-0,07%	1.435,86	1.463,01	1.250,69	1.477,64	16,82% p
FTSE/ATHEX Global Traders Index	1.433,56 s	1.436,95	-3,39	-0,24%	1.419,03	1.437,77	1.253,79	1.468,26	15,41% p
FTSE/ATHEX Mid & Small Cap Factor-Weighted Ind	1.278,83 p	1.274,24	4,59	0,36%	1.257,38	1.286,89	1.230,49	1.331,39	3,22% p
Greece & Turkey 30 Price Index	784,60 p	782,15	2,45	0,31%	778,07	786,07	770,10	861,97	0,87% p
ATHEX Mid & SmallCap Price Index	3.394,94 s	3.414,49	-19,55	-0,57%	3.357,10	3.416,42	3.135,40	3.725,74	8,30% p
FTSE/Athex Market Index	828,62 p	819,30	9,32	1,14%	812,92	828,64	743,92	842,95	12,37% p
FTSE/Med 100	4.305,86 s	4.341,15	-35,29	-0,81%	4.305,26	4.353,89	4.101,14	4.359,51	3,92% p
Athex Composite Index Total Return Index	1.481,02 p	1.464,69	16,33	1,11%	1.455,13	1.481,02	1.303,80	1.501,81	14,36% p
FTSE/Athex Large Cap Total Return	485,56 p	479,57	5,99	1,25%			448,69	489,13	12,67% p
FTSE/ATHEX Large Cap Net Total Return	1.380,74 p	1.363,71	17,03	1,25%	1.352,97	1.380,74	1.236,65	1.404,72	12,66% p
FTSE/ATHEX Capped 20 Total Return	1.165,75 s	1.185,71	-19,96	-1,68%			1.034,53	1.187,42	11,26% p
FTSE/ATHEX Capped 20 -USD Total Return	1.115,86 s	1.134,91	-19,05	-1,68%			1.035,77	1.145,57	12,67% p
FTSE/Athex Mid Cap Total Return	1.580,83 s	1.589,47	-8,64	-0,54%			1.520,96	1.703,08	8,12% p
FTSE/ATHEX-CSE Banking Total Return Index	155,38 p	150,60	4,78	3,17%			148,71	206,26	-15,75% s
Greece & Turkey 30 Total Return Index	921,33 s	926,28	-4,95	-0,53%			908,97	1.010,30	0,55% p
Hellenic Mid & Small Cap Index	1.022,54 p	1.021,90	0,64	0,06%	1.012,19	1.025,16	909,55	1.039,06	16,63% p
FTSE/Athex Banks	190,49 p	184,76	5,73	3,10%	184,38	191,32	179,88	256,94	-15,82% s
FTSE/Athex Financial Services	1.586,44 p	1.569,83	16,61	1,06%	1.564,58	1.595,56	1.347,00	1.638,61	20,28% p
FTSE/Athex Industrial Goods & Services	4.074,98 p	4.051,51	23,47	0,58%	3.997,42	4.074,98	3.252,75	4.197,17	25,36% p
FTSE/Athex Retail	1.934,43 p	1.932,92	1,51	0,08%	1.917,47	1.939,39	1.785,37	2.040,63	5,73% p
FTSE/ATHEX Real Estate	1.896,12 p	1.895,66	0,46	0,02%	1.863,85	1.914,62	1.491,01	2.066,41	27,17% p
FTSE/Athex Personal & Household Goods	3.929,05 p	3.841,40	87,65	2,28%	3.786,39	3.939,80	3.111,49	3.939,80	25,83% p
FTSE/Athex Food & Beverage	7.546,95 p	7.261,51	285,44	3,93%	7.286,33	7.547,01	6.430,28	7.876,65	13,35% p
FTSE/Athex Basic Resources	2.761,86 s	2.767,05	-5,19	-0,19%	2.689,80	2.778,82	2.340,13	2.901,09	18,87% p
FTSE/Athex Construction & Materials	1.983,62 p	1.976,76	6,86	0,35%	1.949,58	1.983,66	1.800,08	2.130,78	8,04% p
FTSE/Athex Oil & Gas	3.225,05 s	3.235,01	-9,96	-0,31%	3.202,29	3.246,81	2.813,23	3.344,96	14,64% p
FTSE/Athex Chemicals	6.893,08 s	6.941,62	-48,54	-0,70%	6.795,99	6.941,62	6.019,31	7.572,67	14,52% p
FTSE/Athex Media	2.349,13 s	2.415,61	-66,48	-2,75%	2.216,16	2.363,90	716,56	2.881,00	224,49% p
FTSE/Athex Travel & Leisure	1.354,16 s	1.362,90	-8,74	-0,64%	1.327,15	1.364,48	1.029,25	1.418,50	34,15% p
FTSE/Athex Technology	817,40 p	815,16	2,24	0,27%	810,18	826,45	719,46	886,96	10,13% p
FTSE/Athex Telecommunications	1.709,35 s	1.731,37	-22,02	-1,27%	1.695,58	1.734,12	1.428,58	1.877,25	21,77% p
FTSE/Athex Utilities	2.953,77 p	2.917,44	36,33	1,25%	2.877,75	2.964,09	2.309,83	2.967,26	29,10% p
FTSE/Athex Health Care	300,10 s	303,23	-3,13	-1,03%	294,53	303,23	262,85	346,05	6,95% p
Athex All Share Index	268,76 p	266,10	2,66	1,00%			244,99	270,57	13,56% p

Note 1: Greece & Turkey 30 Pr data is the indicative at 17:20, whereas FTSE/ATHEX Capped 20, FTSE/ATHEX Capped - USD, FTSE/ATHEX Capped 20 TR, FTSE/ATHEX Capped - USD TR, FTSE/Med 100 & Greece & Turkey 30 Rt closing prices refer to the previous trading day of 18/2/2013.

Note 2: The Hellenic Mid & Small Cap Index is a Customized index calculated by the Athens Exchange.

Athex Indices



Indices volume of transactions

Indices closing prices

## Analytic Figures for Athex Market's Boards and Categories

	Total Traded Shares	Main Market	Low Dispersion	Other Categories (*)	Exchange Traded Funds (ETFs)
Totals	179	137	12	27	3
Gain / Lose / Same:	84 / 69 / 26	67 / 52 / 18	3 / 5 / 4	11 / 12 / 4	3 / 0 / 0
Athex Capitalisation (mill. €)	38.286,97	35.974,45	1.905,25	380,79	26,48
Daily Average Transactions Value (thou. €)	66.221,70	8.587,08	147,73	102,25	48,14
Shares Transactions Value (thou. €)	50.447,96	50.361,71	41,62	20,53	24,10
Main Board:	50.447,96	50.361,71	41,62	20,53	24,10
Blocks Board:	0,00	0,00	0,00	0,00	0,00
Forced Sales Board:	0,00	0,00	0,00	0,00	0,00
Special Terms Board:	0,00	0,00	0,00	0,00	0,00
Daily Average Transactions Volume	41.773.003	6.375.853	53.334	869.023	7.314
Transactions Volume	37.314.071	37.137.200	6.540	163.354	6.977
Main Board:	37.314.071	37.137.200	6.540	163.354	6.977
Blocks Board:	0	0	0	0	0
Forced Sales Board:	0	0	0	0	0
Special Terms Board:	0	0	0	0	0
Daily Average Number of Trades	29.994	4.717	141	345	10
Number of Trades	19.876	19.603	73	192	8
Main Board:	19.876	19.603	73	192	8
Blocks Board:	0	0	0	0	0
Forced Sales Board:	0	0	0	0	0
Special Terms Board:	0	0	0	0	0

(\*) Summarised Transactions figures for Low Dispersion &amp; Specific Features and Under Supervision Categories.

## Trading Details by Sector

Code	Sectors	Gain / Lose / Same	Number of Trades	Transactions Volume	Transactions Value	% of Total Trans. Value
8300	- Banks	6 / 2 / 1	5.959	23.107.757	9.115.353,54	18,07%
1700	- Basic Resources	4 / 9 / 1	1.228	450.202	1.406.623,00	2,79%
1300	- Chemicals	1 / 3 / 1	477	7.079.337	10.824.890,08	21,46%
2300	- Construction & Materials	10 / 10 / 2	886	383.434	1.090.778,48	2,16%
11000	- ETF	3 / 0 / 0	8	6.977	24.104,36	0,05%
8700	- Financial Services	1 / 3 / 1	867	1.320.957	1.159.765,13	2,30%
3500	- Food & Beverage	9 / 5 / 5	1.292	303.078	3.207.098,94	6,36%
4500	- Health Care	3 / 4 / 0	216	109.581	68.697,92	0,14%
2700	- Industrial Goods & Services	11 / 3 / 7	1.149	468.196	1.625.071,49	3,22%
8500	- Insurance	1 / 0 / 0	36	19.296	26.977,06	0,05%
5500	- Media	2 / 3 / 0	73	28.019	8.772,68	0,02%
500	- Oil & Gas	1 / 1 / 0	412	107.350	950.358,45	1,88%
3700	- Personal & Household Goods	10 / 8 / 2	847	411.687	1.083.212,24	2,15%
8600	- Real Estate	5 / 4 / 0	386	69.314	326.989,63	0,65%
5300	- Retail	4 / 2 / 0	249	35.672	412.212,81	0,82%
9500	- Technology	7 / 2 / 4	393	368.605	257.126,77	0,51%
6500	- Telecommunications	0 / 1 / 0	1.556	1.225.451	7.612.295,76	15,09%
5700	- Travel & Leisure	2 / 9 / 2	2.490	1.271.150	7.232.671,94	14,34%
7500	- Utilities	4 / 0 / 0	1.352	548.008	4.014.963,73	7,96%

## Top 10 best &amp; worst performing Shares

## Main Market

With positive Price change	Closing price	change	With negative Price change	Closing price	change
BANK OF CYPRUS (CR)	0,270	6,72% P	ANEK LINES SA (CR)	0,175	-5,40% S
EURODRIP SA (CR)	1,53	4,08% P	ATTICA BANK S.A. (CR)	0,271	-4,24% S
COCA - COLA HBC (CR)	20,10	3,98% P	HALKOR SA (CB)	1,14	-3,39% S
KORRES (CR)	4,44	3,50% P	KRI-KRI S.A. (CR)	1,72	-3,37% S
FRIGOGLASS SA (CR)	6,04	3,25% P	KLOUKINAS - LAPPAS SA (CR)	0,855	-2,62% S
JUMBO SA (CR)	7,70	3,08% P	LAMDA DEVELOPMENT SA (CR)	5,70	-2,56% S
ELGEKA SA (CR)	0,700	2,94% P	SIDENOR (CR)	2,04	-2,39% S
ALPHA BANK (CR)	1,19	2,59% P	FOURLIS (CR)	2,48	-1,98% S
PIRAEUS BANK (CR)	0,284	2,53% P	INTRACOM CONSTR. (CR)	1,02	-1,92% S
NATIONAL BANK (CR)	1,02	2,51% P	CORINTH PIPEWORKS SA (CR)	2,29	-1,72% S
With the highest Transactions Value	Value (thou. €)	change	With the highest Transactions Volume	Volume	change
EURODRIP SA (CR)	10.751,67	4,08% P	BANK OF CYPRUS (CR)	7.737.497	6,72% P
OTE (CR)	7.612,30	-1,27% S	EURODRIP SA (CR)	7.027.220	4,08% P
OPAP (CR)	6.699,85	-0,67% S	CYPRUS POPULAR BANK (CR)	5.073.183	2,27% P
PPC (CR)	3.545,21	1,39% P	PIRAEUS BANK (CR)	4.632.690	2,53% P
ALPHA BANK (CR)	3.045,96	2,59% P	ALPHA BANK (CR)	2.595.977	2,59% P
COCA - COLA HBC (CR)	3.043,72	3,98% P	NATIONAL BANK (CR)	1.898.032	2,51% P
BANK OF CYPRUS (CR)	2.048,81	6,72% P	OTE (CR)	1.225.451	-1,27% S
NATIONAL BANK (CR)	1.916,54	2,51% P	MARFIN INVESTMENT GROUP (CR)	1.211.178	2,42% P
PIRAEUS BANK (CR)	1.308,80	2,53% P	EUROBANK ERGASIAS (CR)	930.237	1,77% P
MYTILINEOS HOLDINGS (CR)	847,68	0,37% P	OPAP (CR)	912.251	-0,67% S

Note: The transactions value of the shares shown in the above tables is at least 10,000€.



## Derivatives Summary

	Number of Trades	Volume	Open Interest	Transactions Value
<b>Index Futures</b>	<b>374</b>	<b>3.823</b>	<b>39.163</b>	<b>6.678.892,50</b>
FTSE/Athex Large Cap	374	3.823	39.158	6.678.892,50
FTSE/ATHEX-CSE Banking Index	0	0	5	0,00
<b>Stock Futures</b>	<b>1.666</b>	<b>31.965</b>	<b>390.884</b>	<b>7.210.124,00</b>
ALPHA BANK (CR)	190	8.931	35.633	1.043.471,00
BANK OF CYPRUS (CR)	94	2.354	41.396	62.691,60
COCA - COLA HBC (CR)	35	109	844	217.135,00
CYPRUS POPULAR BANK (CR)	4	130	14.043	624,00
ELLAKTOR (CR)	9	48	9.529	10.168,00
EUROBANK ERGASIAS (CR)	75	3.148	4.512	147.255,50
EUROBANK PROPERTIES REIC (CR)	9	41	624	23.903,00
FRIGOGLASS SA (CR)	7	28	406	16.516,00
GEK TERNA (CR)	12	128	33.688	29.526,00
HELL. DUTY FREE SHOPS SA (CR)	0	0	527	0,00
HELLENIC EXCHANGES (CR)	12	69	2.678	37.167,00
HELLENIC PETROLEUM (CR)	16	64	2.196	56.084,00
INTRALOT (CR)	35	193	10.143	43.736,00
JUMBO SA (CR)	3	7	297	5.240,00
MARFIN INVESTMENT GROUP (CR)	22	166	23.595	8.381,30
METKA (CR)	3	9	736	11.227,00
MOTOR OIL (CR)	17	95	685	85.655,00
MYTILINEOS HOLDINGS (CR)	68	252	8.100	134.992,00
NATIONAL BANK (CR)	177	4.538	84.117	440.423,50
OPAP (CR)	245	1.723	15.250	1.262.719,00
OTE (CR)	206	2.910	28.684	1.809.466,00
P.P.A. S.A. (CR)	3	3	132	5.659,00
PIRAEUS BANK (CR)	136	4.875	59.235	135.271,10
PPC (CR)	234	1.904	8.018	1.513.120,00
SIDENOR (CR)	18	64	1.848	13.079,00
TERNA ENERGY (CR)	8	85	3.165	29.455,00
TITAN CEMENT (CR)	7	20	433	29.219,00
VIOHALCO (CB)	21	71	370	37.940,00
<b>Index Options</b>	<b>81</b>	<b>820</b>	<b>4.740</b>	<b>1.459.350,00</b>
FTSE/Athex Large Cap	81	820	4.740	1.459.350,00
<b>Stock Options</b>	<b>0</b>	<b>0</b>	<b>6.844</b>	<b>0,00</b>
ALPHA BANK (CR)	0	0	224	0,00
NATIONAL BANK (CR)	0	0	360	0,00
OPAP (CR)	0	0	4.045	0,00
OTE (CR)	0	0	1.835	0,00
PPC (CR)	0	0	380	0,00
<b>Stock Repos - Stock Reverse Repos - Repurchase Agreements</b>	<b>4</b>	<b>3.485</b>	<b>357.097</b>	<b>392.360,00</b>
Stock Reverse Repos	2	2.170	58.967	258.230,00
Stock Repos	0	0	255.430	0,00
Repurchase Agreement	2	1.315	42.700	134.130,00
<b>Total Derivatives Traded</b>	<b>2.125</b>	<b>40.093</b>	<b>798.728</b>	<b>15.740.726,50</b>

Number of Listed	Nominal Value	Dividends [1]			Date of Last Coupon		Note	Shares	Closing price	% change	Previous closing price/date	Open price	Price min	Price max	Last price	Avg price	Last Bid [7]	Last Ask [7]	P/E after	Year	Volume	Trades	Transactions Value	Company Mkt Value (thou. €)	Year low	Year high	Sector [4]	
2010	2011	2012	Dividend [2]	Right																								
71.417.100	0,650	---	---	---	26/5/2010	11/7/2007	---	AEGEAN AIRLINES (CR)	2,60	-1,14 s	2,63	18/2/2013	2,52	2,51	2,62	2,60	2,57	7@2,55	2184@2,62	---	2011	7.144	85	18.332,05	185.684,46	1,96	2,64	5751
11.178.000	1,45	---	---	---	21/4/2010	12/5/2011	---	AEOLIAN INVESTMENT FUND (CR)	1,10	---	1,10	18/2/2013	1,10	1,10	1,10	1,10	1,10	100@1,07	500@1,10	---	2011	1.071	2	1.178,10	12.295,80	0,941	1,15	8985
13.000.000	1,00	---	---	---	1/8/2007	7/4/2000	---	AKRITAS SA (CR)	0,429	10,00 p	0,390	18/2/2013	0,351	0,351	0,429	0,429	0,427	---	---	---	2011	360	8	153,66	5.577,00	0,295	0,520	2353
17.200.576	1,25	---	---	---	3/6/2009	30/6/2010	---	ALCO HELLAS SA (CR)	0,580	0,35 p	0,578	18/2/2013	0,531	0,531	0,585	0,580	0,579	10482@0,561	500@0,621	---	2011	1.796	12	1.039,81	9.976,33	0,400	0,870	1753
534.269.648	0,300	---	---	---	7/4/2008	6/11/2009	---	ALPHA BANK (CR)	1,19	2,59 p	1,16	18/2/2013	1,18	1,15	1,19	1,19	1,17	1000@1,18	139759@1,20	---	---	2.595.977	838	3.045.959,19	635.780,88	1,13	1,67	8355
22.016.250	0,370	---	---	---	15/7/2009	11/5/2000	---	ALUMIL (CR)	0,641	-1,38 s	0,650	18/2/2013	0,665	0,638	0,665	0,645	0,646	50@0,640	300@0,644	---	2011	240	16	154,97	14.112,42	0,590	0,740	1753
268.700	25,00	---	---	---	22/4/2010	3/9/2012	---	ANDROMEDA SA (CR)	20,48	-0,10 s	20,50	18/2/2013	20,50	20,48	20,50	20,48	20,49	113@20,48	1@21,50	---	2011	205	4	4.200,42	5.502,98	19,00	22,51	8985
2.969.713	0,300	---	---	---	2/7/2008	28/2/2011	---	ANEK LINES SA (PR, issue '96)	0,770	---	0,770	12/2/2013	---	---	---	---	---	---	137@0,693	---	2011	---	---	---	35.282,61	0,306	0,770	5759
312.163	0,300	---	---	---	2/7/2008	28/2/2011	---	ANEK LINES SA (PR, issue '90)	1,78	---	1,78	22/10/2012	---	---	---	---	---	---	---	---	2011	---	---	---	35.282,61	1,78	1,78	5759
185.373.016	0,300	---	---	---	2/7/2008	28/2/2011	---	ANEK LINES SA (CR)	0,175	-5,40 s	0,185	18/2/2013	0,189	0,171	0,189	0,175	0,175	450@0,174	3294@0,177	---	2011	102.723	111	18.015,54	35.282,61	0,169	0,270	5759
21.876.700	0,380	---	---	---	8/7/2010	5/6/2001	---	AS COMPANY SA (CR)	0,419	0,72 p	0,416	18/2/2013	0,420	0,401	0,420	0,419	0,418	500@0,405	800@0,419	13,60	2011	1.733	3	723,86	9.166,34	0,387	0,488	5379
86.735.980	0,310	---	---	---	6/7/2009	2/1/2002	---	ATHENS MEDICAL CENTER SA (CR)	0,862	-1,03 s	0,871	18/2/2013	0,858	0,846	0,865	0,862	0,860	350@0,852	8480@0,860	---	2011	6.992	20	6.010,56	74.766,41	0,755	0,994	4533
244.885.573	0,350	---	---	---	4/6/2008	7/9/2009	---	ATTICA BANK S.A. (CR)	0,271	-4,24 s	0,283	18/2/2013	0,270	0,268	0,280	0,271	0,272	10937@0,270	900@0,274	---	2011	235.757	236	64.151,49	66.363,99	0,265	0,729	8355
45.457.464	0,700	---	---	---	1/7/2008	1/3/2010	---	AUDIO VISUAL ENTERPRISES (CR)	0,318	-2,75 s	0,327	18/2/2013	0,320	0,300	0,320	0,318	0,310	30@0,297	660@0,310	---	2011	27.636	56	8.579,78	14.455,47	0,097	0,390	5553
36.360.000	0,320	---	0,15	---	30/4/2012	5/5/2008	---	AUTOHELLAS SA (CR)	1,66	-3,49 s	1,72	18/2/2013	1,72	1,65	1,72	1,66	1,68	460@1,66	993@1,71	6,22	2011	4.668	25	7.862,49	60.357,60	1,50	1,87	5759
20.121.710	1,21	---	---	---	27/7/1992	12/3/2003	---	BALKAN R.E. (CR)	0,330	4,76 p	0,315	18/2/2013	0,330	0,301	0,330	0,330	0,314	300@0,303	3000@0,320	---	2011	6.476	10	2.036,48	6.640,16	0,299	0,438	8633
1.795.140.547	1,00	(0,0615)	---	---	31/5/2011	19/4/2012	4857	BANK OF CYPRUS (CR)	0,270	6,72 p	0,253	18/2/2013	0,254	0,250	0,271	0,270	0,265	49000@0,268	30300@0,271	---	---	7.737.497	1.530	2.048.809,83	484.687,95	0,225	0,282	8355
19.864.886	5,60	1,976	0,67	---	2/5/2012	2/7/2008	---	BANK OF GREECE (CR)	17,08	-1,27 s	17,30	18/2/2013	16,89	16,88	17,27	17,08	17,12	318@17,00	5@17,20	---	---	4.316	58	73.891,82	339.292,25	13,31	19,19	8355
23.986.500	1,05	---	---	---	26/6/2009	15/3/2000	---	BIOKARPET S.A.(CR)	0,751	2,88 p	0,730	18/2/2013	0,750	0,730	0,753	0,745	0,744	1000@0,650	340@0,744	---	2011	6.550	9	4.871,33	18.013,86	0,519	0,789	3726
15.842.391	1,51	---	---	---	15/7/2009	12/5/2000	---	BITROS HOLDING SA (CR)	0,680	1,34 p	0,671	15/2/2013	0,610	0,610	0,680	0,680	0,663	383@0,610	1973@0,680	-(6)-	2011	2.117	14	1.403,57	10.772,83	0,510	0,745	1757
15.816.009	0,300	---	---	---	1/7/2009	17/7/2000	---	BYTE COMPUTER SA (CR)	0,549	---	0,549	18/2/2013	0,549	0,530	0,549	0,549	0,547	100@0,540	260@0,549	---	2011	650	9	355,36	8.682,99	0,490	0,620	9533
101.123.806	0,360	---	---	---	22/7/2010	28/6/2011	---	CENTRIC HOLDINGS (CR)	0,349	-0,57 s	0,351	18/2/2013	0,341	0,341	0,357	0,350	0,347	960@0,350	50@0,355	---	2011	32.635	27	11.313,05	35.292,21	0,330	0,440	5752
4.034.950	0,680	---	---	---	1/7/2005	30/12/2010	---	CHATZIKRIANOTIS & SONS SA (CR)	0,360	2,86 p	0,350	18/2/2013	0,350	0,350	0,360	0,360	0,353	840@0,351	150@0,383	---	2011	2.866	9	1.011,60	1.452,58	0,300	0,522	3577
366.553.507	1,01	---	---	---	23/6/2010	1/8/2012	---	COCA - COLA HBC (CR)	20,10	3,98 p	19,33	18/2/2013	19,50	19,40	20,12	20,10	19,87	4900@20,00	13691@20,10	---	2011	153.174	965	3.043.722,50	7.367.725,49	17,08	21,00	3537
124.170.201	0,780	---	---	---	28/6/2002	7/2/2005	---	CORINTH PIPEWORKS SA (CR)	2,29	-1,72 s	2,33	18/2/2013	2,32	2,28	2,33	2,29	2,30	3020@2,28	255@2,32	65,88	2011	71.587	186	164.922,33	284.349,76	1,93	2,59	1757
9.907.500	0,300	---	---	---	6/10/2005	13/2/2002	---	CPI SA (CR)	0,400	---	0,400	18/1/2013	---	---	---	---	---	---	2400@0,360	---	2012	---	---	---	3.963,00	0,240	0,400	9572
27.379.200	0,610	---	---	---	23/6/2010	5/12/2012	---	CRETE PLASTICS SA (CR)	5,30	---	5,30	18/2/2013	5,28	5,25	5,35	5,35	5,29	420@5,27	34@5,35	15,64	2011	3.180	26	16.827,52	145.109,76	4,77	5,65	1357
26.664.840	0,470	---	---	---	29/6/2005	12/7/1999	---	CYCLON HELLAS SA (CR)	0,620	-0,96 s	0,626	18/2/2013	0,568	0,568	0,620	0,620	0,608	280@0,620	200@0,638	-(6)-	2011	4.356	27	2.646,32	16.532,20	0,520	0,700	1357
4.065.482.410	0,100	---	---	---	1/6/2010	4/2/2013	---	CYPRUS POPULAR BANK (CR)	0,045	2,27 p	0,044	18/2/2013	0,045	0,043	0,047	0,045	0,045	104000@0,045	931929@0,046	---	2011	5.073.183	213	229.178,05	182.946,71	0,039	0,048	8355
15.000.000	0,300	---	---	---	6/7/2007	18/7/2000	---	DAIOS PLASTICS SA (CR)	5,33	---	5,33	14/2/2013	---	---	---	---	---	---	48@5,59	---	2011	---	---	---	79.950,00	4,40	5,50	1357
31.370.399	0,300	---	---	---	11/8/2010	15/2/2012	---	DIONIC (CR)	0,168	1,82 p	0,165	18/2/2013	0,165	0,162	0,170	0,168	0,165	26977@0,165	8000@0,169	---	2011	166.207	49	27.454,34	5.270,23	0,156	0,263	2797
15.878.748	0,480	---	---	---	10/7/2006	22/3/2004	---	DOMIKI KRITIS SA (CR)	0,690	1,47 p	0,680	18/2/2013	0,689	0,686	0,690	0,690	0,689	50@0,645	50@0,696	---	2011	165	8	113,68	10.956,34	0,565	0,800	2357
34.720.000	0,310	---	---	---	16/6/2010	1/8/2007	---	DROMEAS SA (CR)	0,383	-2,55 s	0,393	18/2/2013	0,391	0,372	0,393	0,383	0,390	700@0,372	500@0,383	---	2011	15.050	13	5.867,62	13.297,76	0,283	0,400	3726
3.873.120	0,300	---	---	---	7/7/2008	4/10/2012	---	DRUCKFARBEN HELLAS (CR)	2,45	---	2,45	18/2/2013	---	---	---	---	---	---	27@2,39	---	2011	---	---	---	9.489,14	1,75	2,60	1357
11.250.000	0,560	---	---	---	26/7/2010	16/6/1999	---	EKTER SA (CR)	0,558	0,36 p	0,556	18/2/2013	0,565	0,544	0,588	0,558	0,565	500@0,542	46@0,558	---	2011	2.580	11	1.458,12	6.277,50	0,520	0,700	2357
32.188.050	1,04	---	---	---	21/7/2008	20/1/2000	---	EL. D. MOUZAKIS SA (CB)	0,275	---	0,275	18/2/2013	---	---	---	---	---	200@0,240	830@0,270	---	2011	---	---	---	8.851,71	0,194	0,330	3763
18.648.000	1,00	---	---	---	7/7/2009	10/9/2010	---	ELASTRON (CR)	0,774	-0,13 s	0,775	18/2/2013	0,770	0,751	0,774	0,774	0,762	10@0,770	1330@0,774	---	2011	2.810	11	2.141,75	14.433,55	0,743	0,969	1757
31.937.030	1,60	---	---	---	9/7/2007	19/7/2006	---	ELGEKA SA (CR)	0,700	2,94 p	0,680	18/2/2013	0,680	0,679	0,710	0,710	0,699	2360@0,700	11910@0,710	---	2011	25.840	44	18.049,60	22.355,92	0,490	0,780	3577

Number Listed	Nominal Value	Dividends [1]			Date of Last Coupon		Note	Shares	Closing price	% change	Previous closing price/date	Open price	Price min	Price max	Last price	Avg price	Last Bid [7]	Last Ask [7]	P/E after	Year	Volume	Trades	Transactions Value	Company Mkt Value (thou. €)	Year low	Year high	Sector [4]		
23.828.130	0,500	---	---	---	7/7/2010	17/2/2009	---	ELINOIL S.A. (CR)	1,74	---	1,74	18/2/2013	---	---	---	---	500@1,69	25@1,74	---	2011	---	---	---	41.460,95	1,39	1,89	537		
177.001.313	1,03	0,0308	---	---	5/7/2011	20/12/2007	---	ELLAKTOR (CR)	2,13	1,43	P	2,10	18/2/2013	2,10	2,08	2,13	2,13	2,11	354@2,12	1757@2,13	---	---	100.145	254	210.935,81	377.012,80	1,94	2,39	2357
26.730.187	0,600	---	---	---	25/6/2009	30/12/2010	---	ELTON SA (CR)	1,14	-0,87	S	1,15	18/2/2013	1,16	1,12	1,16	1,14	1,14	1710@1,13	3570@1,15	12,25	2011	33.976	66	38.740,94	30.472,41	0,853	1,25	1353
15.146.404	0,340	0,093	---	---	6/7/2011	17/10/2002	---	ELTRAK SA (CR)	1,60	---	1,60	18/2/2013	1,60	1,56	1,60	1,60	1,59	20@1,56	1292@1,60	34,61	2011	878	9	1.399,30	24.234,25	1,52	1,80	2753	
124.100.815	0,300	---	---	---	27/6/2008	7/7/2000	---	ELVAL SA. (CB)	2,20	-0,90	S	2,22	18/2/2013	2,21	2,19	2,27	2,20	2,24	3299@2,20	246@2,25	16,23	2011	45.589	82	102.039,00	273.021,79	1,90	2,38	1753
13.230.000	0,300	---	---	---	11/8/2010	27/6/2012	---	ELVE SA (CR)	0,594	2,24	P	0,581	18/2/2013	0,585	0,580	0,605	0,587	0,590	2000@0,590	100@0,600	---	---	6.500	9	3.837,10	7.858,62	0,546	0,717	3763
30.009.210	0,310	---	---	---	27/6/2008	26/6/2000	---	ETEM SA (CB)	0,638	---	0,638	18/2/2013	0,645	0,613	0,648	0,638	0,637	700@0,622	91@0,638	---	2011	3.775	12	2.405,75	19.145,88	0,526	0,828	1753	
552.948.427	2,22	---	---	---	2/5/2008	31/5/2011	---	EUROBANK ERGASIAS (CR)	0,460	1,77	P	0,452	18/2/2013	0,459	0,450	0,467	0,460	0,460	100@0,459	1000@0,461	---	2011	930.237	718	427.581,30	254.356,28	0,430	0,740	8355
61.000.000	2,13	0,5364	0,4067	---	23/3/2012	20/11/2007	---	EUROBANK PROPERTIES REIC (CR)	5,85	2,09	P	5,73	18/2/2013	5,73	5,73	5,90	5,85	5,81	22@5,84	25@5,86	---	2012	24.582	167	142.793,67	356.850,00	4,87	6,40	8675
44.448.600	0,600	---	---	---	30/6/2005	31/1/2006	---	EURODRIP SA (CR)	1,53	4,08	P	1,47	18/2/2013	1,53	1,53	1,54	1,53	1,53	475400@1,53	324380@1,54	---	2011	7.027.220	321	10.751.672,80	68.006,36	1,43	1,54	1357
27.503.677	0,600	0,04	0,05	---	13/7/2012	18/10/1999	---	EUROPEAN RELIANCE INSUR. (CR)	1,46	1,39	P	1,44	18/2/2013	1,38	1,36	1,47	1,47	1,40	600@1,42	3876@1,47	18,09	2011	19.296	36	26.977,06	40.155,37	0,973	1,56	8536
13.673.200	0,880	---	---	---	18/7/2008	26/7/2001	---	EVROFARMA SA (CR)	0,330	8,20	P	0,305	18/2/2013	0,305	0,305	0,330	0,330	0,322	1714@0,330	38@0,390	---	2011	4.367	13	1.407,76	4.512,16	0,280	0,539	3577
106.500.000	0,600	0,04	0,17	---	4/7/2012	28/1/2000	---	EYDAP S.A. (CR)	5,99	1,53	P	5,90	18/2/2013	5,85	5,85	6,10	5,99	6,00	88@5,98	500@6,01	---	---	33.035	139	198.144,29	637.935,00	5,34	6,47	7577
52.800.154	0,300	---	---	---	16/4/2010	21/6/2004	---	F.G. EUROPE S.A. (CR)	0,726	---	0,726	18/2/2013	0,680	0,680	0,726	0,726	0,707	128@0,686	120@0,725	9,10	2011	176	3	124,46	38.332,91	0,640	0,950	3722	
10.203.575	0,730	---	---	---	16/7/2007	18/10/1999	---	FIERATEX SA (CR)	0,199	17,06	P	0,170	18/2/2013	0,199	0,199	0,199	0,199	0,199	60@0,153	49@0,209	---	2011	20	2	3,98	2.030,51	0,115	0,254	3763
4.181.450	0,500	---	---	---	21/8/2000	5/3/2002	---	FLOUR MILLS SARANTOPOULOS S	0,710	---	0,710	14/2/2013	---	---	---	---	---	250@0,712	---	1,89	2011	---	---	---	2.968,83	0,700	0,869	3577	
50.992.322	1,00	---	---	---	21/6/2010	16/7/2002	---	FOURLIS (CR)	2,48	-1,98	S	2,53	18/2/2013	2,51	2,48	2,56	2,48	2,52	5860@2,48	1000@2,52	---	2011	240.209	429	604.257,43	126.460,96	2,00	2,82	3722
50.517.252	0,300	---	---	---	7/7/2010	7/9/2011	---	FRIGOGLASS SA (CR)	6,04	3,25	P	5,85	18/2/2013	5,84	5,77	6,07	6,04	5,93	267@5,93	786@6,04	---	2011	18.819	179	111.670,94	305.124,20	5,06	6,26	2757
77.376.446	0,340	---	---	---	23/5/2005	18/8/2011	---	G.E. DIMITRIOU (CR)	0,085	---	0,085	18/2/2013	0,080	0,080	0,085	0,085	0,081	5000@0,079	18800@0,085	---	2011	38.400	11	3.128,00	6.577,00	0,073	0,118	3722	
14.076.360	0,370	---	---	---	19/8/2008	22/7/2003	---	GALAXIDI S.A. (CR)	0,562	0,36	P	0,560	18/2/2013	0,530	0,530	0,562	0,562	0,550	2000@0,563	710@0,570	10,00	2011	1.230	4	676,92	7.910,91	0,496	0,638	3573
85.882.688	0,570	0,0048	---	---	1/8/2011	2/1/2009	---	GEK TERNA (CR)	2,30	-1,29	S	2,33	18/2/2013	2,31	2,27	2,33	2,30	2,30	550@2,29	1200@2,31	---	2011	104.232	197	239.974,62	197.530,18	2,02	2,80	2357
24.060.000	0,300	---	0,017	---	18/6/2012	21/1/2000	---	GEN. COMMERCIAL & IND.SA (CR)	0,389	1,30	P	0,384	18/2/2013	0,389	0,389	0,389	0,389	0,389	5000@0,390	100@0,407	12,35	2011	10	1	3,89	9.359,34	0,326	0,545	2797
1.270.000	0,300	---	---	---	6/7/2007	6/2/2013	---	GIRAKIAN PROFIL SA (CB)	2,30	-7,63	S	2,49	18/2/2013	2,30	2,30	2,30	2,30	2,30	300@2,30	332@2,48	---	2011	100	1	230,00	2.921,00	2,20	3,33	1757
34.770.982	1,54	---	---	---	6/7/2010	27/7/2000	---	GR. SARANTIS SA (CR)	4,21	0,24	P	4,20	18/2/2013	4,20	4,20	4,39	4,39	4,20	2000@4,21	85@4,39	7,96	2011	4.690	13	19.702,35	146.385,83	4,12	4,67	3767
8.340.750	1,20	---	---	---	25/6/2009	30/7/2001	---	HAIDEMENOS SA (CR)	0,650	---	0,650	15/2/2013	0,630	0,630	0,650	0,650	0,630	200@0,626	41@0,736	---	2011	511	2	322,15	5.421,49	0,545	0,905	2791	
101.279.627	0,380	---	---	---	26/6/2008	14/7/2006	---	HALKOR SA (CB)	1,14	-3,39	S	1,18	18/2/2013	1,15	1,13	1,18	1,14	1,15	6670@1,14	1300@1,16	---	2011	60.465	114	69.446,25	115.458,77	0,870	1,42	1755
36.748.909	0,730	---	---	---	15/12/2005	13/12/2006	---	HEL. SUGAR INDUSTRY SA (CB)	1,47	-1,34	S	1,49	18/2/2013	1,46	1,45	1,50	1,47	1,47	100@1,45	500@1,48	23,27	2012	11.463	33	16.799,91	54.020,90	1,36	1,74	3577
66.948.210	0,300	---	---	---	14/7/2009	31/12/2010	---	HELL. DUTY FREE SHOPS SA (CR)	13,66	0,07	P	13,65	18/2/2013	13,60	13,54	13,70	13,66	13,66	350@13,59	65@13,68	---	2011	30.049	233	410.413,57	914.512,55	12,60	14,40	5379
29.546.360	0,710	---	---	---	20/6/2008	23/8/2000	---	HELLENIC CABLES SA (CR)	2,01	---	2,01	18/2/2013	2,02	1,98	2,04	2,00	2,01	490@1,99	571@2,00	50,02	2011	3.391	23	6.820,24	59.388,18	1,78	2,32	2733	
65.368.563	0,790	0,15	0,11	---	11/6/2012	26/9/2012	---	HELLENIC EXCHANGES (CR)	5,36	-0,37	S	5,38	18/2/2013	5,34	5,34	5,41	5,36	5,38	2502@5,36	300@5,37	-(6)-	2011	100.646	298	541.377,99	350.375,50	4,41	5,58	8777
305.635.185	2,18	0,45	0,45	---	17/8/2012	1/10/2003	4795	HELLENIC PETROLEUM (CR)	8,74	-0,57	S	8,79	18/2/2013	8,70	8,70	8,83	8,74	8,75	400@8,72	714@8,80	23,69	2011	71.319	219	624.235,02	2.671.251,52	7,40	9,13	537
305.732.436	0,410	---	---	---	8/7/2009	28/9/2011	---	HYGEIA SA (CR)	0,638	-1,24	S	0,646	18/2/2013	0,663	0,628	0,663	0,638	0,637	1@0,638	1000@0,639	---	2011	82.613	147	52.590,87	195.057,29	0,531	0,795	4533
53.155.053	0,440	---	---	---	21/7/2010	16/7/2008	---	IASO SA (CR)	1,42	1,43	P	1,40	18/2/2013	1,27	1,27	1,42	1,42	1,40	500@1,38	98@1,41	8,98	2011	4.782	15	6.695,56	75.480,18	1,17	1,50	4533
8.298.467	0,400	---	---	---	30/8/1993	30/12/2010	---	IDEAL GROUP SA (CR)	1,37	26,85	P	1,08	18/2/2013	1,06	1,00	1,37	1,37	1,11	146@1,08	480@1,36	-(6)-	2011	921	7	1.017,49	11.368,90	0,665	1,37	9574
28.580.100	0,400	0,05	0,02	---	20/8/2012	23/2/2007	---	IKTINOS HELLAS SA (CR)	1,25	-0,79	S	1,26	18/2/2013	1,28	1,24	1,32	1,25	1,27	70@1,24	2000@1,26	9,14	2011	16.260	46	20.663,90	35.725,13	1,19	1,44	2353
9.000.000	0,880	---	---	---	15/5/2009	7/12/2010	---	ILYDA S.A. (CR)	0,590	---	0,590	13/2/2013	---	---	---	---	---	100@0,540	2235@0,590	23,27	2011	---	---	---	5.310,00	0,369	0,650	9537	
20.578.374	0,620	0,03	---	---	2/6/2011	5/5/1999	---	INFORM P. LYKOS SA (CR)	1,49	1,36	P	1,47	18/2/2013	1,48	1,43	1,49	1,49	1,47	4758@1,46	949@1,49	---	2011	2.662	23	3.924,21	30.661,78	1,34	1,75	2791
11.233.200	0,730	---	---	---	12/7/2010	30/7/1999	---	INTERTECH SA (CR)	0,487	5,64	P	0,461	15/2/2013	0,487	0,487	0,487	0,487	0,487	100@0,416	1000@0,482	---	2011	19	1	9,25	5.470,57	0,390	0,600	9572

Number of Listed	Nominal Value	Dividends [1]			Date of Last Coupon		Note	Shares	Closing price	% change	Previous closing price/date	Open price	Price min	Price max	Last price	Avg price	Last Bid [7]	Last Ask [7]	P/E after	Year	Volume	Trades	Transactions Value	Company Mkt Value (thou. €)	Year low	Year high	Sector [4]		
34.986.430	0,440	---	---	---	25/7/2008	23/2/2010	---	INTERWOOD-XYLEMPORIA (CR)	0,160	---	0,160	18/2/2013	---	---	---	---	1500@0,155	500@0,170	---	2011	---	---	---	6.316,54	0,156	0,188	2353		
2.566.836	0,440	---	---	---	13/8/2010	9/1/2007	---	INTERWOOD-XYLEMPORIA (PR)	0,280	---	0,280	15/2/2013	---	---	---	---	---	1480@0,360	---	2011	---	---	---	6.316,54	0,236	0,315	2353		
23.154.250	1,36	---	---	---	12/8/2008	2/8/2010	---	INTRACOM CONSTR. (CR)	1,02	-1,92	S	1,04	18/2/2013	1,05	1,01	1,06	1,02	1,02	6080@1,01	1070@1,02	57,81	2011	29.730	45	30.411,02	23.617,34	0,921	1,22	2357
133.025.996	1,41	---	---	---	3/7/2007	7/1/2002	---	INTRACOM HOLDINGS (CR)	0,651	0,31	P	0,649	18/2/2013	0,647	0,642	0,664	0,651	0,654	6714@0,650	500@0,655	---	2011	283.519	254	185.319,67	86.599,92	0,557	0,754	9578
158.961.721	0,300	0,0045	0,0035	---	18/5/2012	14/11/2007	---	INTRALOT (CR)	2,25	-0,44	S	2,26	18/2/2013	2,25	2,22	2,28	2,25	2,25	8261@2,24	2000@2,27	-(6)-	2011	205.007	361	462.172,14	357.663,87	1,94	2,39	5752
77.654.850	0,580	0,04	---	---	1/7/2011	21/2/2003	---	J & P - AVAX SA (CR)	1,57	0,64	P	1,56	18/2/2013	1,55	1,55	1,57	1,57	1,56	500@1,57	2200@1,58	---	2011	4.628	13	7.229,20	121.918,11	1,45	1,84	2357
129.962.537	1,19	0,189	---	---	23/12/2010	7/9/2012	---	JUMBO SA (CR)	7,70	3,08	P	7,47	18/2/2013	7,35	7,35	7,70	7,70	7,54	1200@7,61	5@7,71	12,98	2012	48.070	181	362.518,47	1.000.711,53	5,94	7,70	3747
9.742.920	0,400	0,01	0,01	---	13/8/2012	14/7/2000	---	KARAMOLEGOS SA (CR)	1,26	---	---	1,26	13/2/2013	---	---	---	---	---	199@1,22	300@1,32	4,91	2011	---	---	---	12.276,08	1,07	1,83	3577
14.679.792	1,44	0,065	---	---	3/6/2011	4/9/2000	---	KARATZIS SA (CR)	4,01	0,25	P	4,00	18/2/2013	3,96	3,93	4,03	4,03	3,97	70@4,00	250@4,03	10,67	2011	390	9	1.549,94	58.865,97	2,55	4,09	2723
3.300.689	0,350	---	---	---	1/7/2004	21/7/1999	---	KEKROPS SA (CR)	2,77	-4,15	S	2,89	18/2/2013	2,75	2,75	2,84	2,77	2,78	205@2,75	100@2,85	---	2011	540	12	1.499,70	9.142,91	2,69	3,79	8633
7.595.160	0,600	---	---	---	8/8/2008	18/8/2010	---	KIRIAKOULIS SHIPPING SA (CR)	1,03	1,98	P	1,01	18/2/2013	1,30	1,03	1,30	1,03	1,04	122@1,03	590@1,19	78,23	2011	188	2	196,34	7.823,01	0,681	1,49	5759
23.648.700	0,330	0,05	---	---	13/7/2011	23/7/2008	---	KLEEMAN HELLAS SA (CR)	1,54	-0,65	S	1,55	18/2/2013	1,53	1,51	1,54	1,54	1,53	130@1,53	800@1,55	---	2011	4.007	20	6.139,28	36.419,00	1,38	1,88	2757
40.219.218	0,300	---	---	---	25/5/2009	8/9/2010	---	KLOUKINAS - LAPPAS SA (CR)	0,855	-2,62	S	0,878	18/2/2013	0,878	0,853	0,878	0,860	0,861	1500@0,853	1000@0,859	---	2011	11.700	19	10.068,45	34.387,43	0,679	0,929	2357
21.224.340	0,420	---	---	---	2/7/2008	25/4/2006	---	KORDELLOS BROS SA (CR)	0,280	-0,71	S	0,282	15/2/2013	0,282	0,273	0,282	0,280	0,280	100@0,274	8@0,280	---	2011	3.100	10	867,56	5.942,82	0,239	0,428	1757
13.450.000	0,390	---	---	---	25/6/2010	28/5/2008	---	KORRES (CR)	4,44	3,50	P	4,29	18/2/2013	4,20	4,16	4,44	4,44	4,31	524@4,35	15@4,44	---	2011	6.326	22	27.242,70	59.718,00	3,69	4,87	3767
7.125.216	0,650	---	---	---	1/7/2005	14/12/1999	---	KRE.KA SA (CR)	0,370	-7,50	S	0,400	18/2/2013	0,370	0,370	0,370	0,370	0,370	100@0,376	1400@0,420	---	2011	250	1	92,50	2.636,33	0,370	0,580	3573
29.480.000	0,420	---	---	---	19/7/2010	1/8/2007	---	KRETA FARM SA (CR)	0,590	0,34	P	0,588	18/2/2013	0,600	0,554	0,610	0,590	0,567	200@0,589	6448@0,590	---	2011	14.660	28	8.311,26	17.393,20	0,540	0,738	3577
33.065.136	0,330	---	---	---	6/7/2009	17/9/2012	---	KRI-KRI S.A. (CR)	1,72	-3,37	S	1,78	18/2/2013	1,74	1,70	1,80	1,72	1,74	783@1,72	620@1,75	19,02	2011	10.877	56	18.962,59	56.872,03	1,52	2,05	3577
15.804.800	0,330	---	---	---	15/6/2010	12/3/2004	---	KTIMA KOSTAS LAZARIDIS SA (CR)	0,367	---	---	0,367	18/2/2013	0,367	0,367	0,367	0,367	0,367	150@0,351	1500@0,367	---	2011	1.060	2	389,02	5.800,36	0,341	0,488	3535
22.945.139	1,00	---	---	---	19/8/2008	10/9/2012	---	KYRIAKIDIS MARBLES SA (CR)	0,937	-0,21	S	0,939	18/2/2013	0,939	0,900	0,939	0,937	0,920	150@0,930	1485@0,940	8,58	2011	10.600	18	9.756,37	21.499,60	0,841	1,04	2353
44.267.700	0,300	---	---	---	30/5/2007	18/9/2002	---	LAMDA DEVELOPMENT SA (CR)	5,70	-2,56	S	5,85	18/2/2013	5,80	5,53	5,80	5,70	5,65	50@5,65	1000@5,75	---	2011	31.077	166	175.598,65	252.325,89	4,06	6,48	8633
5.939.268	0,620	---	---	---	10/7/2003	3/1/2002	---	LANAKAM SA (CR)	0,689	---	---	0,689	5/2/2013	---	---	---	---	---	---	50@0,650	---	2011	---	---	---	4.092,16	0,609	0,869	3763
7.734.375	1,00	---	---	---	9/7/2007	7/1/2011	---	LIVANIS SA (CR)	0,359	---	---	0,359	11/2/2013	---	---	---	---	---	340@0,256	1069@0,320	---	2011	---	---	---	2.776,64	0,239	0,363	5557
4.740.000	0,860	---	---	---	14/3/2003	---	---	LOGISMOS S.A. (CR)	0,580	---	---	0,580	7/2/2013	---	---	---	---	---	100@0,523	800@0,580	67,28	2011	---	---	---	2.749,20	0,559	1,23	9533
15.222.276	0,640	---	---	---	1/6/2010	2/8/2011	---	LOULIS MILLS SA (CR)	2,76	---	---	2,76	18/2/2013	2,76	2,70	2,80	2,80	2,76	1000@2,75	500@2,85	10,77	2011	27.440	41	75.726,88	42.013,48	2,08	2,80	3577
770.328.883	0,300	---	---	---	26/4/2007	17/4/2012	---	MARFIN INVESTMENT GROUP (CR)	0,508	2,42	P	0,496	18/2/2013	0,499	0,494	0,511	0,508	0,503	10000@0,503	13000@0,509	---	2011	1.211.178	516	609.054,11	391.327,07	0,440	0,564	8775
9.819.370	0,670	---	---	---	14/8/2007	9/1/2004	---	MATHIOS REFRACTORY SA (CR)	0,392	-1,01	S	0,396	13/2/2013	0,392	0,392	0,392	0,392	0,392	680@0,278	330@0,392	---	2011	330	1	129,36	3.849,19	0,280	0,510	2353
4.178.856	1,58	0,22	---	---	21/7/2011	28/7/2004	---	MEDICON S.A (CR)	0,891	10,00	P	0,810	18/2/2013	0,891	0,891	0,891	0,891	0,891	540@0,729	90@0,890	---	2011	50	1	44,55	3.723,36	0,720	1,18	4535
468.700	1,0556	---	---	---	21/3/2012	21/5/2004	---	MERMEREN KOMB. A.D. PR. (GDR)	4,84	1,04	P	4,79	18/2/2013	4,85	4,83	4,85	4,84	4,84	45@4,42	8@4,82	---	2011	20	4	96,79	2.268,51	4,34	5,19	1775
51.950.600	0,320	0,48	0,75	---	10/5/2012	21/10/2005	---	METKA (CR)	12,40	0,81	P	12,30	18/2/2013	12,20	11,99	12,59	12,40	12,37	1141@12,29	3734@12,40	5,83	2011	65.935	315	815.540,22	644.187,44	9,60	12,78	2757
10.500.000	0,900	---	---	---	24/6/2008	4/7/2012	---	MEVACO SA (CR)	1,39	0,72	P	1,38	18/2/2013	1,37	1,37	1,39	1,39	1,38	70@1,38	300@1,40	11,25	2011	1.000	2	1.382,00	14.595,00	1,31	1,58	2757
12.340.000	3,00	0,15	0,25	---	2/3/2012	23/7/2009	---	MIG REAL ESTATE (CR)	1,50	5,63	P	1,42	18/2/2013	1,50	1,50	1,50	1,50	1,50	300@1,50	100@1,52	---	2011	200	1	300,00	18.510,00	1,22	1,72	8671
6.200.000	0,500	---	---	---	22/6/2010	1/11/1995	---	MINERVA KNITWEAR SA (CB)	0,615	6,03	P	0,580	18/2/2013	0,580	0,550	0,620	0,620	0,579	200@0,522	15@0,619	---	2011	2.936	28	1.700,09	3.813,00	0,540	0,948	3763
12.417.000	0,370	---	---	---	28/7/2008	6/9/2011	---	MLS MULTIMEDIA SA (CR)	2,85	---	---	2,85	18/2/2013	2,86	2,80	2,88	2,85	2,84	100@2,84	1684@2,85	26,55	2011	5.153	50	14.611,54	35.388,45	2,60	2,97	9537
4.588.137	16,00	---	---	---	30/6/2005	17/8/2011	---	MOCHLOS SA (CR)	2,39	-1,65	S	2,43	18/2/2013	2,45	2,24	2,45	2,39	2,33	100@2,26	19@2,24	---	2011	3.865	44	9.007,20	10.965,65	1,12	2,60	2357
11.700.000	0,590	---	---	---	2/6/2009	24/7/2012	---	MOTODYNAMICS S.A. (CR)	0,409	-1,45	S	0,415	18/2/2013	0,409	0,409	0,409	0,409	0,409	250@0,350	1000@0,408	---	2011	300	2	122,70	4.785,30	0,302	0,640	5379
110.782.980	0,850	0,25	0,4	---	2/7/2012	5/11/2012	---	MOTOR OIL (CR)	9,09	0,11	P	9,08	18/2/2013	8,99	8,96	9,11	9,09	9,05	66@9,02	107@9,08	7,15	2011	36.031	193	326.123,43	1.007.017,29	8,08	9,37	533
116.915.862	1,07	---	---	---	11/5/2009	6/7/2011	---	MYTILINEOS HOLDINGS (CR)	5,44	0,37	P	5,42	18/2/2013	5,42	5,26	5,47	5,44	5,36	1500@5,43	213@5,44	---	2011	158.077	513	847.680,29	636.022,29	4,50	5,65	1755

Number of Listed	Nominal Value	Dividends [1]			Date of Last Coupon		Note	Shares	Closing price	% change	Previous closing price/date	Open price	Price min	Price max	Last price	Avg price	Last Bid [7]	Last Ask [7]	P/E after	Year	Volume	Trades	Transactions Value	Company Mkt Value (thou. €)	Year low	Year high	Sector [4]		
8.321.682	0,670	---	---	---	17/8/2007	23/11/1999	---	N. LEVEDERIS SA (CB)	0,377	---	0,377	15/2/2013	---	---	---	---	100@0,330	50@0,450	---	2011	---	---	---	4.301,80	0,320	0,658	1757		
2.160.524	0,670	0,0435	0,0435	---	20/8/2012	23/11/1999	---	N. LEVEDERIS SA (PB)	0,539	---	0,539	7/2/2013	---	---	---	---	100@0,378	75@0,539	---	2011	---	---	---	4.301,80	0,321	0,798	1757		
11.510.102	0,890	---	---	---	24/6/2005	6/10/1999	---	NAFPAKTOS TEXTILE IND. SA (CB)	0,398	---	0,398	18/2/2013	---	---	---	---	1500@0,280	200@0,396	---	2011	---	---	---	4.581,02	0,270	0,500	3763		
6.340.000	0,600	---	---	---	30/11/2009	12/7/2000	---	NAKAS MUSIC	0,452	-9,60	s	0,500	18/2/2013	0,452	0,452	0,452	0,452	100@0,500	10@0,510	---	2012	50	5	22,60	2.865,68	0,373	0,600	5379	
956.090.482	5,00	---	---	---	16/5/2008	21/9/2010	---	NATIONAL BANK (CR)	1,02	2,51	p	0,995	18/2/2013	1,01	0,995	1,02	1,02	1,01	49978@1,01	102892@1,03	---	2011	1.898.032	1.209	1.916.541,29	975.212,29	0,982	1,47	8355
23.935.280	0,300	---	---	---	29/6/2009	13/6/2000	---	NAYTEMPORIKI PUBLISHING SA(CR)	0,350	9,38	p	0,320	14/2/2013	0,350	0,350	0,350	0,350	0,350	500@0,295	782@0,350	---	2011	2	1	0,70	8.377,35	0,290	0,360	5557
27.848.000	0,300	0,0301	0,0132	---	20/8/2012	2/9/2003	---	NEWSPHONE HELLAS SA (CR)	0,400	---	0,400	18/2/2013	0,400	0,400	0,400	0,400	0,400	644@0,381	2000@0,410	10,23	2011	1.400	3	560,00	11.139,20	0,371	0,592	2791	
6.132.500	1,25	0,1	---	---	24/6/2011	19/6/2001	---	NEXANS HELLAS SA (CR)	2,75	1,85	p	2,70	18/2/2013	2,75	2,75	2,75	2,75	2,75	240@2,69	200@2,78	---	2011	300	2	825,00	16.864,38	2,48	3,11	2733
63.683.276	1,34	---	---	---	8/7/2008	10/11/2008	---	NIREFS SA (CR)	0,657	0,15	p	0,656	18/2/2013	0,670	0,650	0,670	0,657	0,656	1000@0,652	402@0,658	4,32	2011	22.593	55	14.814,91	41.839,91	0,590	0,839	3573
319.000.000	0,300	1,4177	0,72	---	8/6/2012	25/4/2001	---	OPAP (CR)	7,40	-0,67	s	7,45	18/2/2013	7,32	7,23	7,45	7,40	7,34	12565@7,35	8270@7,42	4,35	2011	912.251	1.830	6.699.852,15	2.360.600,00	5,49	7,76	5752
490.150.389	2,39	0,1179	---	---	28/6/2011	18/6/1998	---	OTE (CR)	6,21	-1,27	s	6,29	18/2/2013	6,27	6,16	6,30	6,21	6,21	300@6,20	1000@6,22	---	2011	1.225.451	1.556	7.612.295,76	3.043.833,92	5,19	6,82	6535
25.000.000	2,00	0,02	0,01	---	10/8/2012	8/8/2003	---	P.P.A. S.A. (CR)	19,00	---	19,00	18/2/2013	18,71	18,71	19,00	19,00	18,82	70@18,71	3@19,00	73,46	2011	3.411	54	64.180,50	475.000,00	16,80	20,37	2777	
4.971.466	1,46	---	---	---	4/7/2007	8/10/2003	---	PAIRIS SA (CR)	0,339	13,76	p	0,298	18/2/2013	0,230	0,230	0,339	0,339	0,324	150@0,275	130@0,338	---	2011	150	3	48,67	1.685,33	0,230	0,478	2723
3.953.090	0,900	---	---	---	2/7/2001	5/12/2012	---	PAPERPACK (CR)	0,862	1,41	p	0,850	18/2/2013	0,870	0,800	0,870	0,850	0,853	360@0,800	159@0,850	---	2011	77.200	40	65.833,79	3.407,56	0,701	1,06	2723
50.797.369	0,310	---	---	---	17/8/2000	12/10/2010	---	PAPOUTSANIS (CR)	0,534	9,88	p	0,486	18/2/2013	0,534	0,534	0,534	0,534	0,534	199@0,439	600@0,534	---	2011	100	1	53,40	27.125,80	0,361	0,639	3767
20.210.127	1,53	---	---	---	27/6/1997	20/3/2000	---	PARNASSOS ENTERP. (CR)	0,498	-2,35	s	0,510	18/2/2013	0,519	0,494	0,524	0,498	0,503	1853@0,497	500@0,501	---	2011	7.857	47	3.954,51	10.064,64	0,460	0,698	8775
14.967.940	0,500	---	---	---	21/5/2008	4/1/2008	---	PASAL DEVELOPMENT S.A. (CR)	0,319	16,00	p	0,275	18/2/2013	0,320	0,319	0,320	0,319	0,319	230@0,254	1630@0,310	---	2011	250	3	79,76	4.774,77	0,231	0,414	8633
7.070.400	0,930	---	---	---	18/5/2010	12/5/2011	---	PETROPOULOS PETROS (CR)	1,32	---	1,32	18/2/2013	1,32	1,20	1,34	1,32	1,30	200@1,31	440@1,32	4,32	2011	10.113	97	13.103,01	9.332,93	1,20	1,53	2753	
1.143.326.564	0,300	---	---	---	16/5/2008	10/1/2011	---	PIRAEUS BANK (CR)	0,284	2,53	p	0,277	18/2/2013	0,284	0,277	0,287	0,284	0,283	37850@0,282	56000@0,285	---	2011	4.632.690	1.147	1.308.797,21	324.704,74	0,261	0,396	8355
22.080.000	0,320	0,05	0,08	---	22/5/2012	3/10/2000	---	PLAISIO COMPUTERS SA (CR)	4,70	---	4,70	18/2/2013	4,71	4,70	4,71	4,70	4,70	934@4,70	1200@5,20	16,38	2011	3.566	12	16.770,20	103.776,00	3,65	4,87	9572	
232.000.000	4,60	0,79	---	---	5/7/2011	12/12/2001	---	PPC (CR)	8,04	1,39	p	7,93	18/2/2013	7,93	7,81	8,07	8,04	7,93	500@7,96	50@8,05	---	2011	447.079	994	3.545.206,28	1.865.280,00	5,96	8,09	7535
11.812.193	0,450	---	---	---	24/7/2009	15/11/2006	---	PROFILE SA (CR)	0,916	1,67	p	0,901	18/2/2013	0,919	0,915	0,919	0,917	0,917	1000@0,896	10@0,917	-(6)-	2011	13.000	12	11.916,53	10.819,97	0,761	0,985	9533
24.319.250	0,300	---	---	---	9/7/2002	4/7/2007	---	PROODEFTIKH SA (CR)	0,113	-5,83	s	0,120	18/2/2013	0,114	0,110	0,114	0,110	0,113	500@0,111	9000@0,118	---	---	1.110	5	125,60	2.748,08	0,108	0,223	2357
6.836.280	1,88	---	---	---	18/7/2005	10/9/2010	---	QUALITY & RELIABILITY SA (CR)	0,390	---	0,390	15/2/2013	---	---	---	---	---	140@0,275	630@0,350	---	2011	---	---	---	2.666,15	0,300	0,500	9533	
48.069.201	0,400	---	---	---	5/9/2008	21/6/2012	---	QUEST HOLDINGS (CR)	1,22	0,83	p	1,21	18/2/2013	1,20	1,19	1,23	1,21	1,20	1800@1,20	3450@1,21	---	2011	14.000	18	16.813,00	58.644,43	1,14	1,39	9533
57.434.884	1,31	---	---	---	5/6/2008	12/6/2009	---	REDS S.A. (CR)	0,700	-1,41	s	0,710	18/2/2013	0,710	0,700	0,711	0,700	0,704	9@0,700	99@0,709	---	2011	2.753	7	1.937,47	40.204,42	0,641	0,949	8633
22.280.000	0,300	0,0329	---	---	11/4/2011	23/2/2007	---	REVOIL (CR)	0,687	1,03	p	0,680	18/2/2013	0,672	0,672	0,687	0,687	0,676	2100@0,675	2250@0,690	44,98	2011	1.240	2	838,38	15.306,36	0,564	0,910	5379
51.197.862	1,00	---	---	---	28/6/2010	25/7/2012	---	S & B IND. MINERALS (CR)	5,60	-0,53	s	5,63	18/2/2013	5,63	5,60	5,63	5,60	5,62	450@5,60	900@5,67	---	2011	2.440	39	13.702,37	286.708,03	5,29	6,08	1775
52.067.296	0,300	---	---	---	23/12/2003	24/1/2007	---	SELECTED TEXT. IND. ASSOC (CR)	0,462	-1,70	s	0,470	18/2/2013	0,463	0,462	0,472	0,462	0,466	2000@0,461	1550@0,470	---	2012	29.398	54	13.685,34	24.055,09	0,401	0,587	3763
36.235.184	1,00	---	---	---	17/7/2008	30/7/2012	---	SELONDA AQUACULTURE SA (CR)	0,443	3,02	p	0,430	18/2/2013	0,430	0,430	0,446	0,446	0,439	3330@0,425	150@0,443	---	2011	12.513	21	5.493,69	16.052,19	0,395	0,600	3573
96.243.908	0,410	---	---	---	26/6/2008	17/7/2000	---	SIDENOR (CR)	2,04	-2,39	s	2,09	18/2/2013	2,08	2,01	2,08	2,04	2,04	1200@2,06	450@2,05	---	2011	98.086	214	200.492,56	196.337,57	1,72	2,39	1757
6.456.530	1,60	---	---	---	29/6/2001	2/8/2010	---	SPACE HELLAS SA (CR)	1,72	-2,27	s	1,76	18/2/2013	1,72	1,72	1,72	1,72	1,72	250@1,24	130@1,72	---	2011	4.143	5	7.125,96	11.105,23	1,25	1,97	9578
28.438.268	0,300	---	---	---	21/8/2006	24/11/1999	---	SPIROY AGRICULTURE SA (CR)	0,336	---	0,336	18/2/2013	---	---	---	---	---	100@0,310	150@0,333	---	2011	---	---	---	9.555,26	0,297	0,557	1357	
33.125.000	5,00	---	---	---	3/7/2006	18/8/2010	---	TECHNICAL OLYMPIC SA (CR)	2,06	-2,37	s	2,11	18/2/2013	2,06	2,06	2,14	2,06	2,08	200@2,05	1574@2,12	---	2011	4.768	52	9.901,64	68.237,50	1,43	2,71	3728
109.319.070	0,300	(0,0399)	(0,0613)	---	28/5/2012	5/9/2012	---	TERNA ENERGY (CR)	3,52	0,57	p	3,50	18/2/2013	3,45	3,43	3,56	3,52	3,51	9000@3,50	2000@3,54	32,63	2011	54.522	162	191.197,72	384.803,13	3,03	3,73	7537
36.300.000	1,12	0,114	0,188	---	17/8/2012	12/12/2007	---	THESSALONIKA WATER & SEWERA	6,09	0,83	p	6,04	18/2/2013	6,01	5,99	6,09	6,09	6,01	150@6,00	100@6,13	10,76	2011	13.372	57	80.415,44	221.067,00	5,75	6,82	7577
45.949.500	0,500	0,036	---	---	2/5/2011	1/11/1999	---	THRACE PLASTICS SA (CR)	1,42	-0,70	s	1,43	18/2/2013	1,42	1,40	1,43	1,43	1,42	4436@1,40	20020@1,43	---	2011	10.605	37	15.002,50	65.248,29	1,24	1,56	1357
77.063.568	4,00	0,0806	---	---	24/6/2011	25/6/2004	---	TITAN CEMENT (CR)	14,80	0,34	p	14,75	18/2/2013	14,80	14,52	14,80	14,80	14,78	150@14,77	50@14,98	---	2011	36.613	137	540.967,16	1.189.739,05	12,97	15,60	2353

Number Listed	Nominal Value	Dividends [1]			Date of Last Coupon		Note	Shares	Closing price	% change	Previous closing price/date	Open price	Price min	Price max	Last price	Avg price	Last Bid [7]	Last Ask [7]	P/E after	Year	Volume	Trades	Transactions Value	Company Mkt Value (thou. €)	Year low	Year high	Sector [4]		
7.568.960	4,00	0,1869	---	---	24/6/2011	25/6/2004	---	TITAN CEMENT CO. (PR)	6,50	---	↘	6,50	18/2/2013	---	---	---	---	29@6,35	10@6,59	---	2011	---	---	---	1.189.739,05	6,32	7,27	2353	
10.080.000	3,00	0,21	0,4	---	18/7/2012	27/8/2001	---	TPA SA (CR)	21,39	-1,06	S	21,62	18/2/2013	21,95	21,25	21,95	21,39	21,61	40@21,25	100@21,85	17,82	2011	907	14	19.601,90	215.611,20	20,00	24,48	2777
54.888.240	1,13	0,1	0,1	---	20/4/2012	22/3/2006	---	TRASTOR REAL EST. INV. CO.(CR)	0,751	-2,85	S	0,773	18/2/2013	0,744	0,744	0,773	0,750	0,750	1740@0,750	1000@0,760	---	2011	3.406	17	2.555,60	41.221,07	0,624	0,829	8671
9.177.094	0,300	---	---	---	16/11/1992	3/12/2012	---	UNIBIOS (CR)	0,239	11,16	P	0,215	18/2/2013	0,245	0,184	0,245	0,239	0,221	500@0,192	30@0,240	73,11	2011	613	7	135,57	2.193,33	0,175	0,414	2353
18.810.000	0,400	---	---	---	8/7/2010	14/11/2007	---	VARVERIS - MODA BAGNO SA (CR)	0,340	---	↘	0,340	18/2/2013	0,309	0,300	0,340	0,340	0,302	200@0,301	281@0,340	---	2011	2.404	9	725,58	6.395,40	0,249	0,410	2353
199.474.091	0,300	---	---	---	3/7/2009	24/3/2000	---	VIOHALCO (CB)	5,40	---	↘	5,40	18/2/2013	5,34	5,28	5,40	5,40	5,33	800@5,34	5@5,43	---	2011	90.440	283	481.834,81	1.077.160,09	3,98	5,68	2727
4.968.600	2,88	---	---	---	1/7/1998	14/12/1998	---	VIS SA (CR)	0,700	---	↘	0,700	18/2/2013	---	---	---	---	---	440@0,503	150@0,820	---	2011	---	---	---	3.478,02	0,525	0,871	2723
6.325.000	0,600	---	---	---	19/7/2010	25/7/2012	---	VOGIATZOGLOU SYSTEMS SA (CR)	1,00	---	↘	1,00	18/2/2013	---	---	---	---	---	550@0,960	1500@1,00	---	2011	---	---	---	6.325,00	0,900	1,18	2797

## Exchange Traded Funds (ETFs)

5.745.839	---	---	---	---	24/1/2008	---	---	ALPHA ETF FTSE Athex Large Cap	3,48	1,46	P	3,43	18/2/2013	3,46	3,45	3,48	3,48	3,45	2000@3,47	1000@3,65	---	---	6.973	6	24.065,76	-	3,15	3,54	11000
294.878	---	---	---	---	29/6/2009	---	---	NBGM ETF	10,78	0,94	P	10,68	18/2/2013	10,78	10,78	10,78	10,78	10,78	---	---	---	---	2	1	21,56	-	9,50	10,90	11000
388.550	---	---	---	---	3/11/2010	---	---	NBGM ETF GREECE & TURKEY 30	8,52	0,23	P	8,50	18/2/2013	8,52	8,52	8,52	8,52	8,52	---	---	---	---	2	1	17,04	-	8,40	9,19	11000

## Low Dispersion

14.000.000	3,80	---	---	---	23/4/2010	29/6/1999	4815	ALPHA REAL ESTATE SA(CR)	6,28	0,32	P	6,26	18/2/2013	6,27	6,27	6,28	6,28	6,28	180@6,29	200@6,70	29,90	2011	30	3	188,30	87.920,00	6,20	6,96	8637
63.900.000	3,00	---	---	---	23/6/2003	4/11/2008	4816	ASTIR PALACE SA (CR)	4,48	-0,22	S	4,49	18/2/2013	4,49	4,48	4,49	4,48	4,48	600@4,47	31@4,48	---	2011	711	14	3.185,76	286.272,00	3,50	4,95	5753
49.152.904	0,800	---	---	---	9/8/2004	8/3/2006	4814	ATHENA SA (CR)	0,210	---	↘	0,210	14/2/2013	---	---	---	---	---	200@0,195	500@0,251	---	2011	---	---	---	10.322,11	0,187	0,340	2357
191.660.320	0,300	---	---	---	20/7/2009	29/12/2010	4817	ATTICA HOLDINGS (CR)	0,343	8,54	P	0,316	18/2/2013	0,325	0,310	0,360	0,360	0,343	84@0,310	11509@0,360	---	2011	901	7	309,34	65.739,49	0,291	0,588	5759
15.300.000	0,300	---	---	---	30/7/2009	13/12/1999	4893	ATTICA PUBLICATIONS SA (CR)	1,14	---	↘	1,14	8/2/2013	---	---	---	---	---	25000@0,920	25000@1,10	-(6)-	2011	---	---	---	17.442,00	0,680	1,45	5557
30.159.583	0,470	---	---	---	26/6/2008	29/12/2010	4905	DIAS A/C (CR)	0,472	-9,92	S	0,524	18/2/2013	0,472	0,472	0,472	0,472	0,472	1000@0,421	2772@0,470	---	2011	729	5	344,09	14.235,32	0,420	0,750	3573
11.720.024	0,530	---	---	---	16/7/2010	29/5/2012	4942	FLEXOPACK SA (CR)	2,85	---	↘	2,85	18/2/2013	---	---	---	---	---	20@2,75	80@2,99	10,05	2011	---	---	---	33.402,07	2,85	3,58	2723
8.418.750	0,300	---	0,15	---	6/6/2012	27/6/2012	4828	GEKE SA (CB)	6,71	---	↘	6,71	18/2/2013	6,71	6,71	6,71	6,71	6,71	100@6,75	40@7,88	10,54	2011	210	4	1.409,10	56.489,81	6,59	6,71	5753
17.297.440	5,80	---	---	---	8/3/2002	13/9/2012	---	GENIKI BANK (CR)	6,52	---	↘	6,52	18/2/2013	6,52	6,52	6,52	6,52	6,52	170@6,69	100@6,70	---	2011	68	10	443,36	112.779,31	6,04	6,70	8355
71.082.707	1,70	---	---	---	1/7/2010	21/11/2012	4820	HERACLES GEN.CEMENT CO. (CR)	1,55	-0,64	S	1,56	18/2/2013	1,50	1,50	1,56	1,56	1,55	9@1,50	600@1,56	---	2011	491	2	760,50	110.178,20	1,27	1,80	2353
13.404.440	8,63	---	---	---	2/4/2001	6/3/1992	4822	IONIAN HOTELS SA (CR)	10,40	---	↘	10,40	18/2/2013	---	---	---	---	---	200@10,04	---	---	2011	---	---	---	139.406,18	10,40	13,00	5753
2.760.000	7,70	6,3291	7,6	---	30/5/2012	16/7/1990	4823	KARELIA TOBACCO CO. SA (CB)	147,95	2,03	P	145,00	18/2/2013	146,00	146,00	148,00	148,00	147,96	5@133,00	35@148,00	10,83	2011	168	5	24.858,00	408.342,00	110,00	151,00	3785
17.000.000	0,600	---	---	---	12/6/2008	7/3/2000	4941	KATHIMERINI SA (CR)	0,701	-5,27	S	0,740	18/2/2013	0,701	0,701	0,701	0,701	0,701	130@0,609	448@0,701	---	2011	190	6	133,19	11.917,00	0,451	0,910	5557
21.364.000	1,12	---	---	---	5/7/2010	10/8/2005	4824	LAMPASA HOTEL SA (CR)	18,00	---	↘	18,00	18/2/2013	18,00	18,00	18,00	18,00	18,00	200@15,06	51@17,90	---	2011	250	3	4.500,00	384.552,00	15,00	18,00	5753
6.700.000	0,800	---	---	---	19/7/2010	29/8/2012	4894	MILLS KEPENOS (CR)	1,60	---	↘	1,60	18/2/2013	---	---	---	---	---	---	1000@1,60	9,68	2011	---	---	---	10.720,00	1,20	1,69	3577
70.926.000	2,25	---	---	---	25/7/2008	21/6/2000	4825	MINOAN LINES SA (CR)	1,99	-0,50	S	2,00	18/2/2013	2,00	1,96	2,00	1,99	1,99	900@1,82	2897@1,99	---	2011	2.692	13	5.348,32	141.142,74	1,81	2,03	5759
17.240.776	0,370	---	---	---	14/7/2005	30/9/2003	4827	PERSEUS SA (CR)	0,230	---	↘	0,230	18/2/2013	---	---	---	---	---	450@0,210	150@0,250	4,28	2011	---	---	---	3.965,38	0,033	0,325	3577
7.500.000	0,660	---	---	---	25/6/2010	12/1/2012	4940	S.KANAKIS SA (CR)	1,39	---	↘	1,39	18/2/2013	1,39	1,39	1,39	1,39	1,39	100@1,36	295@1,38	11,50	2011	100	1	139,00	10.425,00	1,22	1,40	3577

## Surveillance

33.301.715	0,320	---	---	---	27/6/2003	8/7/2009	4412	AEGEK (CR)	0,118	-2,48	S	0,121	18/2/2013	0,119	0,118	0,119	0,118	0,118	1569@0,118	57881@0,120	---	2011	24.578	20	2.903,19	3.929,60	0,114	0,184	2357
14.870.100	0,400	---	---	---	15/5/2008	26/9/2011	4844	ALPHA GRISSIN S.A. (CR)	0,220	---	↘	0,220	14/2/2013	---	---	---	---	---	1840@0,176	3125@0,220	---	2011	---	---	---	3.271,42	0,182	0,328	9533
5.025.000	0,300	---	---	---	5/7/2005	14/3/2002	4924	ALSINCO S.A (CR)	0,084	---	↘	0,084	18/2/2013	---	---	---	---	---	4000@0,068	---	---	2011	---	---	---	422,10	0,059	0,185	3763

Number Listed	Nominal Value	Dividends [1]			Date of Last Coupon		Note	Shares	Closing price	% change	Previous closing price/date	Open price	Price min	Price max	Last price	Avg price	Last Bid [7]	Last Ask [7]	P/E after	Year	Volume	Trades	Transactions Value	Company Mkt Value (thou. €)	Year low	Year high	Sector [4]		
215.246.452	0,300	---	---	---	25/6/2001	24/9/2001	4446	ALTEC SA (CR)	0,036	-7,69 s	0,039	18/2/2013	0,035	0,035	0,037	0,035	0,035	19444@0,035	1255@0,037	---	2011	40.500	15	1.435,99	7.748,87	0,032	0,062	9533	
81.644.555	0,300	---	---	---	1/7/2008	2/9/2002	4630	ATTI - KAT SA (CR)	0,070	4,48 p	0,067	18/2/2013	0,069	0,069	0,070	0,070	0,070	9000@0,059	12084@0,070	---	2011	11.410	9	797,29	5.715,12	0,022	0,088	2357	
20.255.805	0,300	---	---	---	22/8/2006	2/8/2010	4881	AXON HOLDING SA (CR)	0,132	1,54 p	0,130	18/2/2013	0,130	0,130	0,149	0,145	0,132	800@0,131	311@0,148	---	2011	3.340	14	442,35	2.673,77	0,114	0,192	4533	
17.579.754	4,16	---	---	---	18/8/2006	2/8/2010	4885	BIOTER SA (CR)	0,123	---	0,123	18/2/2013	0,123	0,123	0,123	0,123	1000@0,116	10000@0,120	---	2011	1.830	6	225,09	2.162,31	0,113	0,194	2357		
12.431.980	0,720	---	---	---	20/6/2003	10/7/2003	4559	COMPUCON SA (CR)	0,100	---	0,100	18/2/2013	---	---	---	---	---	---	4976@0,080	---	---	---	---	1.243,20	0,064	0,100	9537		
10.375.000	0,300	---	---	---	28/5/2008	21/11/2013	4947	DOL SA (CR)	0,576	---	0,576	18/2/2013	---	---	---	---	---	110@0,461	38@0,576	---	2011	---	---	---	5.976,00	0,500	0,759	5557	
3.961.300	1,28	---	---	---	29/6/2004	3/8/2000	4808	DUROS SA (CR)	0,320	---	0,320	15/2/2013	---	---	---	---	---	120@0,260	10@0,320	---	2011	---	---	---	1.267,62	0,293	0,600	3763	
7.085.888	1,59	---	---	---	2/7/1996	6/9/2010	4690	ELVIEMEK (CR)	3,00	---	3,00	5/2/2013	---	---	---	---	---	50@2,40	78@3,30	---	2011	---	---	---	21.257,66	3,00	3,58	8633	
6.000.000	0,600	---	---	---	13/6/2008	8/4/2004	4886	EUROBROKERS S.A. (CR)	0,190	---	0,190	18/2/2013	---	---	---	---	---	100@0,190	---	---	2011	---	---	---	1.140,00	0,190	0,333	8534	
7.347.600	0,600	---	---	---	2/6/2010	25/2/2010	4889	EUROCONSULTANTS S.A. (CR)	2,64	---	2,64	13/12/2012	---	---	---	---	---	---	290@2,12	---	---	2011	---	---	---	19.397,66	2,64	2,64	2791
21.820.410	0,800	---	---	---	22/5/2008	2/8/2011	4882	EUROMEDICA SA (CR)	0,456	-0,22 s	0,457	18/2/2013	0,456	0,456	0,456	0,456	0,456	1480@0,465	480@0,539	---	2011	1.765	6	804,84	9.950,11	0,444	0,600	4533	
12.952.610	0,300	---	---	---	---	4/10/2012	4846	Forthnet (CR)	0,599	1,01 p	0,593	18/2/2013	0,600	0,581	0,600	0,581	0,599	18@0,581	7784@0,600	---	2011	2.333	6	1.398,24	7.758,61	0,569	0,930	9535	
179.707.771	0,300	---	---	---	27/6/2002	1/11/2011	4847	HELLAS ONLINE SA (CR)	0,442	4,99 p	0,421	18/2/2013	0,447	0,440	0,447	0,440	0,442	500@0,401	202@0,438	---	2011	800	3	353,40	79.430,83	0,400	0,709	9537	
13.692.227	1,47	---	---	---	7/7/2006	8/10/1999	4845	HELLENIC FABRICS SA (CR)	0,250	---	0,250	12/2/2013	---	---	---	---	---	---	3335@0,299	---	---	2011	---	---	---	3.423,06	0,250	0,354	3763
30.390.000	0,310	---	---	---	18/8/2008	29/12/2006	4447	HELLENIC FISHFARMING SA (CR)	0,092	-9,80 s	0,102	18/2/2013	0,086	0,086	0,101	0,101	0,092	999@0,086	56@0,101	10,89	2011	294	4	26,99	2.795,88	0,076	0,137	3573	
1.540.000	0,600	---	---	---	8/8/1994	19/9/2000	4855	J.BOUTARIS & SON HOLD. (PB)	0,129	---	0,129	6/2/2013	---	---	---	---	---	240@0,104	---	---	2011	---	---	---	2.087,13	0,129	0,201	3535	
25.179.640	0,600	---	---	---	8/8/1994	19/9/2000	4854	J.BOUTARIS & SON HOLD. SA (CB)	0,075	13,64 p	0,066	18/2/2013	0,075	0,075	0,075	0,075	0,075	800@0,064	1973@0,075	---	2011	350	3	26,26	2.087,13	0,060	0,132	3535	
51.081.030	1,00	---	---	---	20/8/2007	3/9/2007	4912	LAVIPHARM SA (CR)	0,210	-5,83 s	0,223	18/2/2013	0,210	0,210	0,212	0,210	0,210	1000@0,190	1000@0,228	---	2011	10.039	13	2.109,19	10.727,02	0,184	0,268	4577	
322.925.288	0,300	---	---	---	23/5/2007	10/4/2000	4554	M.J. MAILLIS SA (CR)	0,141	-4,08 s	0,147	18/2/2013	0,143	0,140	0,146	0,140	0,141	1500@0,136	4893@0,139	---	2011	20.425	20	2.875,10	45.532,47	0,070	0,150	2723	
9.567.289	0,300	---	---	---	1/7/2004	19/11/2007	4944	MARAC ELECTRONICS (CR)	0,350	---	0,350	6/2/2013	---	---	---	---	---	---	60@0,330	---	---	2011	---	---	---	3.348,55	0,330	0,409	9578
66.937.526	0,700	---	---	---	13/8/2010	21/5/2003	4927	MICHANIKI SA (CR)	0,228	0,88 p	0,226	18/2/2013	0,229	0,225	0,229	0,228	0,228	580@0,224	5909@0,228	---	2011	14.790	19	3.367,11	19.780,36	0,221	0,370	2357	
25.968.987	0,700	---	---	---	13/8/2010	21/5/2003	4928	MICHANIKI SA (PR)	0,174	8,08 p	0,161	18/2/2013	0,175	0,173	0,175	0,173	0,174	800@0,151	3352@0,170	---	2011	5.000	8	870,00	19.780,36	0,137	0,268	2357	
255.459.600	0,300	---	---	---	26/6/2000	3/12/2010	4833	NEL SA (CR)	0,099	-17,50 s	0,120	18/2/2013	0,120	0,098	0,120	0,098	0,099	1279@0,098	150@0,120	---	2011	1.770	8	175,66	25.290,50	0,082	0,158	5759	
20.231.328	0,900	---	---	---	15/7/2008	25/6/2004	4879	NIKAS SA (CR)	0,358	---	0,358	8/2/2013	0,358	0,358	0,358	0,358	0,358	998@0,358	2051@0,429	---	2011	150	2	53,70	7.242,82	0,357	0,530	3577	
42.501.273	0,300	---	---	---	26/6/2007	10/8/2009	4749	NUTRIART (CR)	0,080	---	0,080	18/2/2013	0,080	0,080	0,080	0,080	0,080	4846@0,078	3036@0,080	---	2011	13.122	5	1.049,76	3.400,10	0,053	0,114	3577	
40.946.303	0,360	---	---	---	18/7/2005	27/11/2007	4856	PC SYSTEMS SA (CR)	0,140	---	0,140	18/2/2013	0,140	0,140	0,140	0,140	0,140	400@0,112	5153@0,139	---	2011	1	1	0,14	5.732,48	0,120	0,180	9533	
18.750.000	0,300	---	---	---	2/7/2001	31/12/2012	---	PEGASUS PUBLISHING S.A. (CR)	0,300	20,00 p	0,250	18/2/2013	0,300	0,300	0,300	0,300	0,300	2986@0,300	---	---	---	2011	134	8	40,20	5.625,00	0,190	0,610	5557
28.056.518	0,530	---	---	---	4/7/2007	19/7/2006	4750	SATO SA (CR)	0,067	-15,19 s	0,079	18/2/2013	0,064	0,064	0,079	0,067	0,067	27644@0,065	2308@0,079	---	2011	4.128	7	276,83	1.879,79	0,025	0,094	3726	
7.914.480	2,50	---	---	---	23/6/2008	29/6/2011	4888	SFAKIANAKIS SA (CR)	0,671	---	0,671	18/2/2013	---	---	---	---	---	150@0,611	---	---	2011	---	---	---	5.310,62	0,400	0,720	5379	
60.221.300	0,400	---	---	---	1/7/2002	1/11/2010	4880	SHELMAN SA (CR)	0,190	---	0,190	23/1/2013	---	---	---	---	---	---	4300@0,152	---	---	2011	---	---	---	11.442,05	0,190	0,280	2353
10.000.000	1,35	---	---	---	24/6/2008	10/5/2005	4887	SIDMA SA (CR)	0,808	---	0,808	15/2/2013	---	---	---	---	---	1000@0,648	209@0,776	---	2011	---	---	---	8.080,00	0,570	0,920	1757	
29.060.950	0,340	---	---	---	20/8/2007	24/10/2001	4884	SPIDER METAL INDUSTRY SA (CR)	0,055	3,77 p	0,053	18/2/2013	0,055	0,055	0,055	0,055	0,055	170@0,057	130@0,063	---	2011	40	1	2,20	1.598,35	0,053	0,097	2757	
26.262.660	0,900	---	---	---	1/7/2008	24/2/2011	4910	SPRIDER STORES (CR)	0,040	5,26 p	0,038	18/2/2013	0,041	0,039	0,041	0,039	0,040	200@0,039	10000@0,040	---	2011	2.300	4	91,70	1.050,51	0,027	0,055	5371	
6.523.780	0,530	---	---	---	1/7/2002	6/3/2001	4747	TECHNICAL PUBLICATIONS SA (CR)	0,079	---	0,079	13/2/2013	---	---	---	---	---	1000@0,080	---	---	2011	---	---	---	515,38	0,079	0,347	5557	
50.396.500	0,300	---	---	---	16/7/2009	17/7/2012	---	TELETIPOS SA (CR)	0,330	-0,90 s	0,333	13/2/2013	0,330	0,330	0,330	0,330	0,330	99@0,330	510@0,399	---	2011	57	2	18,81	16.630,85	0,198	0,600	5553	
3.229.566	0,320	---	---	---	22/6/2005	23/9/1999	4629	VARANGIS AVEPE S.A. (CR)	0,263	---	0,263	18/2/2013	---	---	---	---	---	3500@0,264	5000@0,280	---	2011	---	---	---	849,38	0,206	0,482	3726	
10.305.079	1,00	---	---	---	25/6/2002	3/12/1999	4611	VARVARESSOS SA (CB)	0,050	-5,66 s	0,053	18/2/2013	0,050	0,050	0,050	0,050	0,050	480@0,050	---	---	2011	20	1	1,00	515,25	0,050	0,181	3763	
71.683.906	0,400	---	---	---	15/6/2005	5/2/2008	4946	XATZIOANNOU (CR)	0,029	-3,33 s	0,030	18/2/2013	0,029	0,029	0,029	0,029	0,029	1999@0,029	13490@0,030	---	2011	3.000	2	87,00	2.078,83	0,029	0,085	3763	

Number of Listed	Nominal Value	Dividends [1]			Date of Last Coupon		Note	Shares	Closing price	% change	Previous closing price/date	Open price	Price min	Price max	Last price	Avg price	Last Bid [7]	Last Ask [7]	P/E after	Year	Volume	Trades	Transactions Value	Company Mkt Value (thou. €)	Year low	Year high	Sector [4]
------------------	---------------	---------------	--	--	---------------------	--	------	--------	---------------	----------	-----------------------------	------------	-----------	-----------	------------	-----------	--------------	--------------	-----------	------	--------	--------	--------------------	-----------------------------	----------	-----------	------------

## Surveillance

13.191.620	0,620	---	---	---	4/8/2010	9/9/2002	4741	YALCO - CONSTANTINOU SA (CB)	0,159	-0,63 S	0,160 30/11/2013	0,159	0,159	0,159	0,159	0,159	---	969@0,159	---	2011	978	2	155,50	2.097,47	0,120	0,204	3722
------------	-------	-----	-----	-----	----------	----------	------	------------------------------	-------	---------	------------------	-------	-------	-------	-------	-------	-----	-----------	-----	------	-----	---	--------	----------	-------	-------	------

## Under Deletion

365.000	2,83	---	---	---	1/7/2004	11/12/2012	---	TRIA ALFA SA (CR)	1,66	---	1,66 5/2/2013	---	---	---	---	---	570@1,33	500@1,99	---	2011	---	---	---	934,20	1,66	4,70	3763
245.000	2,83	---	---	---	19/7/2010	11/12/2012	---	TRIA ALFA SA (PR)	1,34	---	1,34 1/2/2013	---	---	---	---	---	---	279@1,60	---	2011	---	---	---	934,20	0,501	1,34	3763
1.002.280	1,90	0,2532	0,27	---	4/7/2012	7/11/1989	4878	ZAMPA SA (CB)	4,70	2,84 P	4,57 18/2/2013	4,60	4,60	4,80	4,80	4,70	150@4,60	49@4,80	63,66	2011	200	3	940,00	4.710,72	4,20	4,80	3722

## Under Suspension

49.030.011	0,300	---	---	---	19/7/2010	12/5/2011	4875	ALAPIS (CR)	0,041	---	0,041 30/3/2012	---	---	---	---	---	---	---	---	---	---	---	---	2.010,23	0,041	0,041	4577
5.280.000	0,800	---	---	---	7/7/2008	29/3/2010	4561	ALTIUS INV. FUND SA (CR)	1,07	---	1,07 28/4/2009	---	---	---	---	---	---	---	---	---	---	---	---	5.649,60	1,07	1,07	8985
73.366.520	0,700	---	---	---	6/7/2000	21/12/2004	4418	ASPIS PRONIA GEN. INSUR. (CR)	0,670	---	0,670 29/7/2008	---	---	---	---	---	---	---	---	---	---	---	---	49.155,57	0,670	0,670	8536
1.750.955.549	0,600	---	---	---	19/5/2008	8/12/2011	4911	ATE (CR)	0,155	---	0,155 30/7/2012	---	---	---	---	---	---	---	---	---	---	---	---	271.398,11	0,155	0,155	8355
21.382.067	0,300	---	---	---	2/10/2006	15/2/2006	4628	ATERMON (CR)	0,120	---	0,120 31/3/2010	---	---	---	---	---	---	---	---	---	---	---	---	2.565,85	0,120	0,120	5555
28.468.777	0,920	---	---	---	16/8/2006	4/5/2005	4733	ATLANTIC SA (CR)	0,080	---	0,080 24/3/2011	---	---	---	---	---	---	---	---	---	---	---	---	2.277,50	0,080	0,080	5337
105.423.498	0,510	---	---	---	1/7/2004	28/12/2005	4920	AVENIR S.A. (CR)	0,046	---	0,046 30/8/2012	---	---	---	---	---	---	---	---	---	---	---	---	4.849,48	0,046	0,046	5752
33.930.000	0,300	---	---	---	3/7/2006	30/5/2001	4865	BABIS VOVOS SA (CR)	0,304	---	0,304 30/3/2012	---	---	---	---	---	---	---	---	---	---	---	---	10.314,72	0,304	0,304	8633
21.676.536	0,640	---	---	---	20/8/2008	10/12/2007	4547	BETANET (CR)	0,060	---	0,060 30/3/2009	---	---	---	---	---	---	---	---	---	---	---	---	1.300,59	0,060	0,060	2353
21.920.570	0,300	---	---	---	3/7/2007	13/12/1999	4702	CARDASSILARIS SA (CR)	0,140	---	0,140 30/11/2010	---	---	---	---	---	---	---	---	---	---	---	---	3.068,88	0,140	0,140	3577
54.547.634	0,500	---	---	---	25/4/2005	21/11/2009	4860	CH.TEGOPOULOS PUBL. SA (CR)	0,038	---	0,038 23/3/2012	---	---	---	---	---	---	---	---	---	---	---	---	2.072,81	0,038	0,038	5557
17.894.046	0,590	---	---	---	1/7/2005	6/7/2000	4462	DIEKAT SA (CR)	0,100	---	0,100 27/11/2008	---	---	---	---	---	---	---	---	---	---	---	---	1.789,40	0,100	0,100	2357
7.847.611	1,20	---	---	---	18/8/2007	28/9/2011	4939	EDRASIS - C. PSALLIDAS SA (CR)	0,150	---	0,150 19/11/2012	---	---	---	---	---	---	---	---	---	---	---	---	1.177,14	0,150	0,150	2357
5.750.000	0,300	---	---	---	12/12/2008	12/12/2011	4929	ELECTRONIKI ATHINON SA (CR)	0,480	---	0,480 7/9/2012	---	---	---	---	---	---	---	---	---	---	---	---	2.760,00	0,480	0,480	5375
8.000.000	1,00	---	---	---	19/7/2000	4734	ELEFThERI TILEORASI SA (CR)	0,760	---	0,760 28/3/2011	---	---	---	---	---	---	---	---	---	---	---	---	---	6.080,00	0,760	0,760	5553
24.605.397	0,400	---	---	---	29/6/1995	27/5/2002	4651	EMPORIKOS DESMOS SA (CR)	0,080	---	0,080 28/5/2010	---	---	---	---	---	---	---	---	---	---	---	---	2.134,04	0,080	0,080	3722
1.182.903	0,400	---	---	---	1/7/1996	27/5/2002	4652	EMPORIKOS DESMOS SA (PR)	0,140	---	0,140 28/9/2009	---	---	---	---	---	---	---	---	---	---	---	---	2.134,04	0,140	0,140	3722
8.593.750	0,300	---	---	---	1/6/2009	20/6/2007	4876	FASHION BOX (CR)	1,30	---	1,30 23/2/2012	---	---	---	---	---	---	---	---	---	---	---	---	11.171,88	1,30	1,30	3763
7.326.648	1,00	---	---	---	26/7/2006	24/7/2001	4921	FINTEXPOR SA (CR)	0,328	---	0,328 29/6/2012	---	---	---	---	---	---	---	---	---	---	---	---	2.403,14	0,328	0,328	3763
20.860.000	0,300	---	---	---	3/7/2000	13/11/2007	4848	IKONA - IHOS SA (CR)	0,072	---	0,072 2/12/2011	---	---	---	---	---	---	---	---	---	---	---	---	1.501,92	0,072	0,072	5379
36.765.744	0,350	---	---	---	16/8/2006	6/6/2011	4869	IMPERIO SA (CR)	0,026	---	0,026 30/3/2012	---	---	---	---	---	---	---	---	---	---	---	---	955,91	0,026	0,026	2777
24.619.524	0,500	---	---	---	10/10/1986	30/12/2002	4914	KERAMIA-ALLATINI (CR)	0,088	---	0,088 27/8/2012	---	---	---	---	---	---	---	---	---	---	---	---	2.166,52	0,088	0,088	8633
7.840.373	1,20	---	---	---	18/7/2002	5/3/2003	4765	KLONATEX SA (PR)	0,080	---	0,080 9/5/2011	---	---	---	---	---	---	---	---	---	---	---	---	1.453,75	0,080	0,080	3763
20.663.047	1,20	---	---	---	21/8/2000	5/3/2003	4764	KLONATEX SA (CR)	0,040	---	0,040 9/5/2011	---	---	---	---	---	---	---	---	---	---	---	---	1.453,75	0,040	0,040	3763
17.544.600	0,600	---	---	---	3/7/2000	1/8/2000	4868	KOYMBAS SYNERGY GROUP (CR)	0,132	---	0,132 29/3/2012	---	---	---	---	---	---	---	---	---	---	---	---	2.315,89	0,132	0,132	8775
16.775.600	3,25	---	---	---	17/6/2002	21/1/2009	4416	LAN-NET (CR)	0,120	---	0,120 30/6/2008	---	---	---	---	---	---	---	---	---	---	---	---	2.013,07	0,120	0,120	6535
15.015.000	1,60	---	---	---	1/7/2002	2/2/2000	4603	MAXIM C.M. PERTSINIDIS SA (CB)	0,100	---	0,100 30/11/2009	---	---	---	---	---	---	---	---	---	---	---	---	1.501,50	0,100	0,100	3763
22.000.000	0,440	---	---	---	3/7/2006	16/3/2001	4463	MESOCHORITI BROS SA (CR)	0,120	---	0,120 27/11/2008	---	---	---	---	---	---	---	---	---	---	---	---	2.640,00	0,120	0,120	2357
13.555.100	1,00	---	---	---	8/7/2005	4576	MICROLAND COMPUTERS SA (CR)	0,640	---	0,640 14/7/2009	---	---	---	---	---	---	---	---	---	---	---	---	---	8.675,26	0,640	0,640	5379
23.463.874	0,800	---	---	---	23/5/2003	21/12/1999	4918	NEORION SA (CR)	0,125	---	0,125 28/8/2012	---	---	---	---	---	---	---	---	---	---	---	---	2.932,98	0,125	0,125	2753



Number of Listed	Nominal Value	Dividends [1]			Date of Last Coupon		Note	Shares	Closing price	% change	Previous closing price/date		Open price	Price min	Price max	Last price	Avg price	Last Bid [7]	Last Ask [7]	P/E after	Year	Volume	Trades	Transactions Value	Company Mkt Value (thou. €)	Year low	Year high	Sector[4]
25.583.146	0,300	---	---	---	25/6/2001	3/12/2008	4723	PETZETAKIS SA (CR)	0,260	---	0,260	28/1/2011	---	---	---	---	---	---	---	---	---	---	---	---	6.651,62	0,260	0,260	1357
9.550.386	0,500	---	---	---	1/7/1997	12/6/2008	4626	PRAXITELIO SA (CR)	0,390	---	0,390	11/3/2010	---	---	---	---	---	---	---	---	---	---	---	---	4.430,09	0,390	0,390	4533
1.306.368	0,500	---	---	---	1/7/1997	12/6/2008	4627	PRAXITELIO SA (PR)	0,540	---	0,540	15/12/2009	---	---	---	---	---	---	---	---	---	---	---	---	4.430,09	0,540	0,540	4533
62.683.822	0,300	---	---	---	27/5/2008	9/1/2006	4830	PROTON BANK S.A. (CR)	0,180	---	0,180	7/10/2011	---	---	---	---	---	---	---	---	---	---	---	---	11.283,09	0,180	0,180	8355
23.059.688	0,660	---	---	---	3/7/2008	6/8/2004	4864	RIDENCO SA (CR)	0,032	---	0,032	30/3/2012	---	---	---	---	---	---	---	---	---	---	---	---	737,91	0,032	0,032	3765
51.083.993	1,00	---	---	---	15/7/2008	6/8/2003	4867	SANYO HELLAS HOLD. (CR)	0,020	---	0,020	30/3/2012	---	---	---	---	---	---	---	---	---	---	---	---	1.021,68	0,020	0,020	3722
51.334.286	0,320	---	---	---	3/7/2000	18/12/2007	4548	SAOS (CR)	0,780	---	0,780	27/3/2009	---	---	---	---	---	---	---	---	---	---	---	---	40.040,74	0,780	0,780	2773
26.408.040	0,300	---	---	---	1/7/1997	26/5/1999	4464	SHEET STEEL SA (CR)	0,120	---	0,120	28/11/2008	---	---	---	---	---	---	---	---	---	---	---	---	3.168,96	0,120	0,120	1757
144.688.060	0,600	---	---	---	21/4/2008	10/3/2010	---	T BANK (CR)	0,048	---	0,048	30/11/2011	---	---	---	---	---	---	---	---	---	---	---	---	6.945,03	0,048	0,048	8355
13.920.000	0,320	---	---	---	19/11/2001	1/8/2000	4726	TEXAPRET SA (CR)	0,080	---	0,080	23/2/2011	---	---	---	---	---	---	---	---	---	---	---	---	1.113,60	0,080	0,080	3763
284.465.964	3,70	---	---	---	20/6/2008	15/6/2009	4913	TT HELLENIC POSTBANK (CR)	0,168	---	0,168	30/8/2012	---	---	---	---	---	---	---	---	---	---	---	---	47.790,28	0,168	0,168	8355
89.616.200	0,300	---	---	---	21/8/2000	28/6/2007	4616	UNITED TEXTILES (CR)	0,050	---	0,050	25/2/2010	---	---	---	---	---	---	---	---	---	---	---	---	4.480,81	0,050	0,050	3763

## Under Suspension

## Shares' Notes

Code	Note text
( )	- Adjusted dividends.
*	- Last adjusted closing price.
[1]	- Net dividends.
[2]	- The "Date of Last Coupon" for New listings refers to the date company's stocks started to trade in Athex
[3]	- The Company Market Value is referred to the number of listed shares
[4]	- Sectors codification can be found in Appendix A
[5]	- The Market Value refers to the total number of shares listed (including their several classes) in the exchange by the company.
[6]	- P/E greater than 100
[7]	- Last view of the Order Book before the end of the trading session
4412	- Transfer to the Under Supervision Category as of 27/6/2008.
4416	- Suspension of trading as of 1/7/2008.
4418	- Suspension of trading as of 30/07/2008.
4446	- Transfer to the "Under Supervision" Category as of 20/10/2008.
4447	- Transfer to the "Under Supervision" Category as of 21/10/2008.
4462	- Suspension of trading as of 28/11/2008.
4463	- Suspension of trading as of 28/11/2008.
4464	- Suspension of trading as of 1/12/2008.␣
4547	- Suspension of trading as of 31/3/2009.
4548	- Suspension of trading as of 1/4/2009.
4554	- Transfer to the "Under Supervision" Category as of 6/4/2009.
4559	- Transfer to the "Under Supervision" Category as of 21/4/2009.␣
4561	- Suspension of trading as of 29/4/2009.␣
4576	- Suspension of trading as of 14/7/2009.
4603	- Suspension of trading as of 1/12/2009.
4611	- Transfer to the Under Supervision Category as of 21/12/2009.
4616	- Suspension of trading as of 25/2/2010.
4626	- Suspension of trading as of 1/4/2010.
4627	- Suspension of trading as of 1/4/2010.
4628	- Suspension of trading as of 1/4/2010.
4629	- Transfer to the Under Supervision Category as of 12/4/2010.
4630	- Transfer to the Under Supervision Category as of 12/4/2010.
4651	- Suspension of trading as of 1/6/2010.
4652	- Suspension of trading as of 1/6/2010.
4690	- Transfer to Surveillance category as of 4/4/2006.
4702	- Suspension of trading as of 1/12/2010.␣
4723	- Suspension of trading as of 31/1/2011.␣
4726	- Suspension of trading as of 1/3/2011.␣
4733	- Suspension of trading as of 28/3/2011.␣
4734	- Suspension of trading as of 30/3/2011.␣
4741	- Transfer to the "Under Surveillance Category" from 8/4/2011.
4747	- Transfer to the "Under Surveillance Category" from 8/4/2011.
4749	- Transfer to the "Under Surveillance Category" from 8/4/2011.
4750	- Transfer to the "Under Surveillance Category" from 8/4/2011.
4764	- Suspension of trading as of 20/5/2011.
4765	- Suspension of trading as of 20/5/2011.
4795	- The final gross (pre-tax) dividend is € 0.30 per share and subject to withholding tax on the full dividend amount, i.e. 0,45 per share, for those shareholders liable to withholding tax, in accordance with the applicable tax law provisions. ␣
4808	- Suspension of trading as of 6/9/2011.␣
4814	- Transfer to the Low Dispersion Category as of 30/5/2011.
4815	- Transfer to the Low Dispersion Category as of 30/5/2011.
4816	- Transfer to the Low Dispersion Category as of 30/5/2011.
4817	- Transfer to the Low Dispersion Category as of 30/5/2011.

Shares' Notes

Code	Note text
4820	- Transfer to the Low Dispersion category as of 18/4/2008.
4822	- Transfer to the Low Dispersion category as of 30/5/2011.
4823	- Transfer to the Low Dispersion category as of 4/4/2006.
4824	- Transfer to the Low Dispersion category as of 18/4/2008.
4825	- Transfer to the Low Dispersion category as of 8/4/2011.
4827	- Transfer to the Low Dispersion category as of 5/5/2010.
4828	- Transfer to the Low Dispersion category as of 4/4/2006.
4830	- Suspension of trading as of 10/10/2011.
4833	- Transfer to Surveillance category from 6/5/2010.
4844	- Transfer to the Surveillance category from 8/4/2011.
4845	- Transfer to the Surveillance Category as of 25/11/2011.
4846	- Transfer to the Surveillance Category as of 25/11/2011.
4847	- Transfer to the Surveillance Category as of 3/7/2009.
4848	- Suspension of trading as of 6/12/2011.
4854	- Transfer to the Surveillance Category as of 29/12/2011.
4855	- Transfer to the Surveillance Category as of 29/12/2011.
4856	- Transfer to the Surveillance Category as of 29/12/2011.
4857	- The 793,906,274 new (CR) shares, resulting from the recent share capital increase through a rights issue, are not yet admitted to trading on the ATHEX.
4860	- Suspension of trading as of 30/3/2012.
4864	- Suspension of trading as of 30/3/2012.
4865	- Suspension of trading as of 2/4/2012.
4867	- Suspension of trading as of 2/4/2012.
4868	- Suspension of trading as of 2/4/2012.
4869	- Suspension of trading as of 2/4/2012.
4875	- Suspension of trading as of 2/4/2012.
4876	- Suspension of trading as of 3/4/2012.
4878	- Transfer to the Under Deletion Category as of 10/4/2012.
4879	- Transfer to the Surveillance Category as of 10/4/2012.
4880	- Transfer to the Surveillance Category as of 10/4/2012.
4881	- Transfer to the Surveillance Category as of 10/4/2012.
4882	- Transfer to the Surveillance Category as of 10/4/2012.
4884	- Transfer to the Surveillance Category as of 10/4/2012.
4885	- Transfer to the Surveillance Category as of 10/4/2012.
4886	- Transfer to the Surveillance Category as of 10/4/2012.
4887	- Transfer to the Surveillance Category as of 10/4/2012.
4888	- Transfer to the Surveillance Category as of 10/4/2012.
4889	- Transfer to the Surveillance Category as of 10/4/2012.
4893	- Transfer to the Low Dispersion category as of 28/5/2012.
4894	- Transfer to the Low Dispersion category as of 28/5/2012.
4905	- Transfer to the "Low Dispersion" Category as of 22/6/2012.
4910	- Transfer to the Surveillance Category as of 24/7/2012.
4911	- Lift of suspension from 30/7/2012.
4912	- Transfer to the Surveillance Category as of 31/7/2012.
4913	- Suspension of trading as of 30/8/2012.
4914	- Suspension of trading as of 31/8/2012.
4918	- Suspension of trading as of 31/8/2012.
4920	- Suspension of trading as of 31/8/2012.
4921	- Suspension of trading as of 31/8/2012.
4924	- Transfer to the Surveillance Category as of 3/9/2012.
4927	- Transfer to the "Under Surveillance Category" from 8/4/2011.
4928	- Transfer to the "Under Surveillance Category" from 8/4/2011.
4929	- Suspension of trading as of 1/10/2012.
4939	- Suspension of trading as of 30/11/2012.

---

## Shares' Notes

---

Code	Note text
4940	- Transfer to the Low Dispersion category as of 3/12/2012.
4941	- Transfer to the Low Dispersion category as of 3/12/2012.
4942	- Transfer to the Low Dispersion category as of 3/12/2012.
4944	- Transfer to the Surveillance Category as of 7/12/2012.
4946	- Transfer to the Surveillance Category as of 10/1/2013.
4947	- The 23,343,750 new (CR) shares, resulting from the recent share capital increase through a rights issue, are not yet admitted to trading on the ATHEX.

---

## Shares Blocks Details

---

Stocks	Block Volume	Price	Block Trade Value	Time of approval	Note
--------	--------------	-------	-------------------	------------------	------

---

No Blocks Transactions.

---

---

## Blocks Notes

---

2 - SPOT 1 or SPOT 2 Packet	11 - Total Assets > 500 bil
3 - Block with Short Selling	12 - Sell Offer through Athex
4 - Buy to Close Block	13 - Forced Sale of NMOE
6 - Simultaneous Constitution	14 - Restoration Packet
7 - Repurchase Agreement	15 - Market Maker Packet
8 - Dispersion's Achievement (Not Listed)	16 - Short Selling
9 - Dispersion's Achievement (Listed)	18 - SPOT 1 Packet
10 - Share Capital Majority of Greek State (> 50 bil)	20 - Method 6-1 Packet

---

**Shares Rights Details**

Occured date	Exercise from	Exercise until	Trading until	<b>Rights</b>	Price min	Price max	Closing price	Last Bid	Last Ask	Volume	Trades	Transactions Value
--------------	---------------	----------------	---------------	---------------	-----------	-----------	---------------	----------	----------	--------	--------	--------------------

No Rights Transactions.

---

**Shares Short Selling**

---

Stocks	Transactions Value	Transactions Volume	% of Total Volume	Short Covering Trans. Value	Short Covering Volume	% of Total Volume
--------	-----------------------	------------------------	----------------------	--------------------------------	--------------------------	----------------------

---

No Short Sales Transactions.

---

---

**Short Selling Notes**

---

[1] - The Hellenic Capital Markets Commission (HCMC) has decided to prohibit the short selling only in relation to shares of credit institutions admitted to trading on the Athens Exchange and comprising the FTSE/ATHEX - CSE Banking Index, for a period of three(3) months and more specifically from February1, 2013 until April 30, 2013.

## Stock Borrowing

Stocks	Stock Borrowing through Helex (volume)	Stock Borrowing through OTC (volume) [1]	Totals [2]
ALAPIS (CR)	---	6.250	6.250
ALPHA BANK (CR)	764.500	1.056.310	1.820.810
ATE (CR)	---	40.260	40.260
BANK OF CYPRUS (CR)	274.500	27.829	302.329
COCA - COLA HBC (CR)	22.500	9.574	32.074
CYPRUS POPULAR BANK (CR)	35.000	447.328	482.328
ELLAKTOR (CR)	3.500	6.000	9.500
EUROBANK ERGASIAS (CR)	223.000	515.351	738.351
EUROBANK PROPERTIES REIC (CR)	---	21.856	21.856
FRIGOGLASS SA (CR)	---	1.540	1.540
HELL. DUTY FREE SHOPS SA (CR)	700	---	700
HELLENIC EXCHANGES (CR)	6.600	12.000	18.600
HELLENIC PETROLEUM (CR)	24.800	6.673	31.473
INTRALOT (CR)	---	7.270	7.270
JUMBO SA (CR)	7.500	4.342	11.842
LAMDA DEVELOPMENT SA (CR)	---	10.377	10.377
MARFIN INVESTMENT GROUP (CR)	144.500	924.167	1.068.667
METKA (CR)	7.100	1.157	8.257
MOTOR OIL (CR)	8.700	2.467	11.167
MYTILINEOS HOLDINGS (CR)	6.400	24.569	30.969
NATIONAL BANK (CR)	7.522.100	132.506	7.654.606
NBGAM ETF GREECE & TURKEY 30	5.500	---	5.500
OPAP (CR)	56.200	401	56.601
OTE (CR)	97.500	29.874	127.374
PIRAEUS BANK (CR)	426.200	471.760	897.960
PPC (CR)	93.100	---	93.100
TERNA ENERGY (CR)	---	2.667	2.667
TITAN CEMENT (CR)	8.100	4.054	12.154
VIOHALCO (CB)	16.500	5.400	21.900

## Stock Borrowing Notes

[1] - The information concerning OTC Stock Borrowing Transactions is based on the statements of the Dematerialised Securities System (DSS) operators involved and refers to volumes that have been cleared and registered up until the previous working day.



---

**Shares Forced Sales**

---

Stocks	Transactions Volume	Number of Trades	Transactions Value	Note
<hr/> <b>No Forced Transactions.</b> <hr/>				

---

**Forced Sales Notes**

---

- 1 - Normal Forced Sale.
- 2 - Forced Sales of Fixed Registered Shares.
- 3 - Forced Sales of Remaining Stock Fractions.

**Forced Sales Registered Shares**

Stocks	Start Date	End Date	Initial Volume	Remaining Volume	Date	Avg price (day)	Avg price (period)	Number of Trades	Transactions Volume	Transactions Value
--------	------------	----------	----------------	------------------	------	-----------------	--------------------	------------------	---------------------	--------------------

No Fixed Registered Shares Forced Sales.

**Forced Sales Notes**

According to Decision 1/380/04.05.2008 of the Hellenic Republic Capital Market Commission, the certificated registered shares that have not been deposited to the issuer for dematerialisation, will be auctioned in the Athens Exchange by the supervising issuer. Forced sales procedure is held according to Article 99A of the Athens Exchange Rulebook. The average price of the period is calculated by dividing the Total transactions value by the Total volume and includes all the transactions made until the current date.

## Exchange Traded Funds (ETFs) Characteristics

Stocks	Transactions Date (T)	Creation / Redemption	Units (T-1)	New Units (T-1)	Redemption Units (T-1)	Units (T) [1]	Fund Assets [2]	Net Unit Price	Dividend per Unit	Dividend Date
NBGAM ETF ΓΔ X.A.	19/2/2013	25.000	294.878	---	---	294.878	3.137.634,00	10,6404	---	27/10/2011
ALPHA ETF FTSE Athex Large Cap	19/2/2013	50.000	5.745.839	---	---	5.745.839	19.737.180,00	3,4350	0,07	2/7/2012
NBGAM ETF GREECE & TURKEY 30	19/2/2013	25.000	388.550	---	---	388.550	3.285.259,00	8,4552	---	27/10/2011

## ETFs Notes

[1] - Units (T) = Units (T-1) + New Units (T-1) - Redemption Units (T-1)

[2] - The Creation / Redemption Units of T-1 are included.

## Corporate Bonds

Num Listed Bonds	Nominal price	Issue price	Today's Rate	Exp. Date	Duration (years)	Note	Coupon attached		Trading Unit	Corporate Bonds	Price min	Price max	Closing price	Previous closing price/date	Volume	Transactions Value	Price	Last order		Year min	Year max	
							Common	Preferred										Buy / Sell	Date			
39.711.653	1,00	1,00	6,00	30/6/2016	5	4786	4	---	1	BANK OF CYPRUS PUBLIC CO. LTD (Convert. to CR sh.)	---	---	---	---	---	---	9,1000	B	19/2/2013	100,0000	100,0000	
428.521.983	1,00	1,00	6,50	30/6/2016	5	4785	4	---	1	BANK OF CYPRUS PUBLIC CO. LTD (Convert. to CR sh.)	25,5000	26,1000	26,0500	23,9480	15/2/2013	101,000	26,168,50	26,1000	B	19/2/2013	22,0000	30,0000
52.757.814	4,77	4,77	5,00	19/3/2015	5	---	12	---	1	MARFIN INVESTMENT GROUP S.A. (Conver to CR shar)	---	---	---	48,0000	8/2/2013	---	---	11,0100	B	19/2/2013	10,0000	70,0000
73.088.145	1,00	1,00	5,50	30/6/2014	5	4574	8	---	1	BANK OF CYPRUS PUBLIC CO. LTD (Convert. to CR sh.)	24,0000	25,0000	25,0000	24,0000	8/2/2013	205,000	49,263,50	24,0200	B	19/2/2013	20,0000	25,0000
1.915.684	12,49	9,77	5,32	12/7/2015	8	---	12	---	1	NIREUS S.A. (Convertible to CR shares)	---	---	---	11,5060	6/2/2013	---	---	15,0000	B	19/2/2013	11,0000	15,0000
27.283.632	1,00	1,00	1,32	30/6/2018	10	---	10	---	1	BANK OF CYPRUS PUBLIC CO. LTD (Convert. to CR sh.)	---	---	---	33,0000	13/12/2012	---	---	35,0000	B	19/2/2013	33,0000	33,0000

4574 - The bonds are of indefinite duration.

4785 - The bonds are of indefinite duration.

4786 - The bonds are of indefinite duration. The Bond's par value, issue price and trading prices are expressed in USA Dollars, whereas its Transactions Value is expressed in Euros.

## Corporate Bonds Notes

Transactions Volume = (Pieces) \* (Face Value). Transactions Value = (Pieces) \* (Nominal value) \* (price %) + (Accrued interest).

The price of a Bond is stated as a percentage (%) of Bond's Face Value.

Nominal Value in Euros (€), except if it is noted differently.

## Government Bonds

Number Listed Bonds	Nominal price	Today's Rate	Accrued Interest Calc	Exp. Date [1]	Duration (years)	Note	Coupons Date	Curr. coupon value	Trading Unit	Government Bonds	Price min	Price max	Closing price	Previous closing price/date	Volume	Transactions Value	Price	Last order Buy / Sell	Date
2.658.781.973	1,00	2,00	Actual/Actual	24/2/2023	11	---	24/02	2,00	1	GGB-FXD-240223-11Y-2.000-1.00	---	---	---	---	---	---	---	---	---
2.658.781.973	1,00	2,00	Actual/Actual	24/2/2024	12	---	24/02	2,00	1	GGB-FXD-240224-12Y-2.000-1.00	---	---	---	---	---	---	---	---	---
2.658.781.973	1,00	2,00	Actual/Actual	24/2/2025	13	---	24/02	2,00	1	GGB-FXD-240225-13Y-2.000-1.00	---	---	---	---	---	---	---	---	---
2.658.781.973	1,00	2,00	Actual/Actual	24/2/2026	14	---	24/02	2,00	1	GGB-FXD-240226-14Y-2.000-1.00	---	---	---	---	---	---	---	---	---
2.658.781.973	1,00	2,00	Actual/Actual	24/2/2027	15	---	24/02	2,00	1	GGB-FXD-240227-15Y-2.000-1.00	---	---	---	---	---	---	---	---	---
2.836.034.104	1,00	2,00	Actual/Actual	24/2/2028	16	---	24/02	2,00	1	GGB-FXD-240228-16Y-2.000-1.00	---	---	---	---	---	---	---	---	---
2.836.034.104	1,00	2,00	Actual/Actual	24/2/2029	17	---	24/02	2,00	1	GGB-FXD-240229-17Y-2.000-1.00	---	---	---	---	---	---	---	---	---
2.836.034.104	1,00	2,00	Actual/Actual	24/2/2030	18	---	24/02	2,00	1	GGB-FXD-240230-18Y-2.000-1.00	---	---	---	---	---	---	---	---	---
2.836.034.104	1,00	2,00	Actual/Actual	24/2/2031	19	---	24/02	2,00	1	GGB-FXD-240231-19Y-2.000-1.00	---	---	---	---	---	---	---	---	---
2.836.034.104	1,00	2,00	Actual/Actual	24/2/2032	20	---	24/02	2,00	1	GGB-FXD-240232-20Y-2.000-1.00	---	---	---	---	---	---	---	---	---
2.836.034.104	1,00	2,00	Actual/Actual	24/2/2033	21	---	24/02	2,00	1	GGB-FXD-240233-21Y-2.000-1.00	---	---	---	---	---	---	---	---	---
2.836.034.104	1,00	2,00	Actual/Actual	24/2/2034	22	---	24/02	2,00	1	GGB-FXD-240234-22Y-2.000-1.00	---	---	---	---	---	---	---	---	---
2.836.034.104	1,00	2,00	Actual/Actual	24/2/2035	23	---	24/02	2,00	1	GGB-FXD-240235-23Y-2.000-1.00	---	---	---	---	---	---	---	---	---
2.836.034.104	1,00	2,00	Actual/Actual	24/2/2036	24	---	24/02	2,00	1	GGB-FXD-240236-24Y-2.000-1.00	---	---	---	---	---	---	---	---	---
2.836.034.104	1,00	2,00	Actual/Actual	24/2/2037	25	---	24/02	2,00	1	GGB-FXD-240237-25Y-2.000-1.00	---	---	---	---	---	---	---	---	---
2.836.034.104	1,00	2,00	Actual/Actual	24/2/2038	26	---	24/02	2,00	1	GGB-FXD-240238-26Y-2.000-1.00	---	---	---	---	---	---	---	---	---
2.836.034.104	1,00	2,00	Actual/Actual	24/2/2039	27	---	24/02	2,00	1	GGB-FXD-240239-27Y-2.000-1.00	---	---	---	---	---	---	---	---	---
2.836.034.104	1,00	2,00	Actual/Actual	24/2/2040	28	---	24/02	2,00	1	GGB-FXD-240240-28Y-2.000-1.00	---	---	---	---	---	---	---	---	---
2.836.034.104	1,00	2,00	Actual/Actual	24/2/2041	29	---	24/02	2,00	1	GGB-FXD-240241-29Y-2.000-1.00	---	---	---	---	---	---	---	---	---
2.836.034.104	1,00	2,00	Actual/Actual	24/2/2042	30	---	24/02	2,00	1	GGB-FXD-240242-30Y-2.000-1.00	---	---	---	---	---	---	---	---	---
1.500.000	1.000,00	1,01	FLR	Actual/360	10/8/2014	5	---	10/02 - 10/08	---	1	GGB-FRN-100814-05Y-1.762-1000.00	---	---	---	---	---	---	---	---
5.187.186	1.000,00	1,65	FLR	Actual/360	21/5/2014	5	---	21/11 - 21/05	---	1	GGB-FRN-210514-05Y-2.734-1000.00	---	---	---	---	---	---	---	---
78.300	1.000,00	1,18	FLR	Actual/360	23/7/2014	5	---	23/01 - 23/07	---	1	GGB-FRN-230714-05Y-2.018-1000.00	---	---	---	---	---	---	---	---

## Government Bonds Notes

Transactions Volume = (Pieces) \* (Face Value). Transactions Value = (Pieces) \* (Nominal value) \* (price %) + (Accrued interest).

The Value of current coupon for the issues with NV 0.01 euro refers to NV 100 euros

FLR: Floating Interest Rate.

[1] - The Expiration Date of the interest bearing period and the Date for coupon payment.

Bonds in Circulation	Currency / Min nominal traded Value	Coupons Payment Date	Current Coupon Value	Note	Coupon Attached	Trading Unit	Issue Date	Duration (years)	Today's Interest	A.I.C in days	Bonds	Last price of previous days	Last Outcry in Cash (euro) Price Buy / Sell	Trades in Pieces	Life min	Life Max			
<b>Bonds of International Organizations</b>																			
1.000.000	EUR / 1000	21/07	---	---	7	1	21/7/2006	10	5,0 FLR	360	EUROPEAN INVESTMENT BANK BOND	97,50	16/4/2007	---	---	---			
<b>Corporate Bonds in Foreign Currency and Euro</b>																			
103.746	GBP / 10	01/12	0,25	---	54	1	1/12/1930	98	2,5	360	National Mortgage Bank	2,27	5/2/1996	2,27	S	5/2/1996	---	2,27	2,27
0	GBP / 10	01/12	0,25	---	56	1	1/12/1928	100	2,5	360	National Mortgage Bank	---	---	---	---	---	---	---	---

## Government Bonds Notes

A.I.C: Accrued Interest Calculation base.

FLR: Floating Interest Rate.

The minimum tradeable Nominal Value for all Demeterialised Government Titles is 100 Euros.

## State Banks Bonds (one year maturity)

Number Listed Bonds	Nominal value	Initial Rate	Current Rate	Annual Interest	Issue Date	Note	State Banks Bonds	Trading Unit	Yearly Renewals	Last Outcry in Cash (euro)		Volume
										Price	Buy / Sell	
342.560	130,41	2,35	2,35	0,00	31/1/2005	---	H.I.D.B.	1	9	100,00	B	---
16.015	1.211,71	3,65	3,65	0,00	30/11/2006	---	H.I.D.B.	1	7	---	---	---
253.488	1.123,08	4,20	2,47	28,18	29/2/2008	---	H.I.D.B.	1	5	---	---	---
4.837	1.125,27	4,40	2,47	28,24	29/2/2008	---	H.I.D.B.	1	5	---	---	---
187.562	1.120,29	4,40	2,47	28,11	31/3/2008	---	H.I.D.B.	1	5	---	---	---
8.820	1.124,66	4,80	2,47	28,22	30/4/2008	---	H.I.D.B.	1	5	---	---	---
64.279	1.145,30	4,40	2,47	28,74	30/4/2008	---	H.I.D.B.	1	5	---	---	---
2.446	1.125,75	4,90	2,47	28,25	31/5/2008	---	H.I.D.B.	1	5	---	---	---
171.117	1.134,80	5,50	2,47	28,48	31/5/2008	---	H.I.D.B.	1	5	---	---	---
1.583	1.132,08	5,25	2,47	28,41	30/6/2008	---	H.I.D.B.	1	5	---	---	---
79.895	1.132,08	5,25	2,47	28,41	30/6/2008	---	H.I.D.B.	1	5	---	---	---
208.723	1.135,89	5,60	2,47	28,50	30/6/2008	---	H.I.D.B.	1	5	---	---	---
237.568	1.135,89	5,60	2,47	28,50	30/6/2008	---	H.I.D.B.	1	5	---	---	---
184.899	1.133,91	5,60	2,47	28,45	31/7/2008	---	H.I.D.B.	1	5	---	---	---
150.857	1.133,91	5,60	2,47	28,45	31/7/2008	---	H.I.D.B.	1	5	---	---	---
63.787	1.101,48	5,45	2,47	30,88	31/8/2008	---	H.I.D.B.	1	5	---	---	---
54.559	1.129,20	5,45	2,47	28,34	31/8/2008	---	H.I.D.B.	1	5	---	---	---
165.926	1.130,82	5,60	2,47	28,38	31/8/2008	---	H.I.D.B.	1	5	---	---	---
77.348	1.130,82	5,60	2,47	28,38	31/8/2008	---	H.I.D.B.	1	5	---	---	---
5.358	1.108,96	5,45	2,47	27,83	31/10/2008	---	H.I.D.B.	1	5	---	---	---
1.045	1.129,74	5,50	2,47	28,35	31/10/2008	---	H.I.D.B.	1	5	---	---	---
76.077	1.132,45	5,75	2,47	28,42	31/10/2008	---	H.I.D.B.	1	5	---	---	---

## Bonds Notes

The annual renewal of H.I.D.B. Bonds is free of taxes (net rate).  
For Bonds issue until 31/01/2013 the accrued interest is capitalized.

**Athex & ATHEXClear Members List**

Member Name	Stock Market			Derivatives Market			ATHEXClear Member					
	Address	Phone	Fax	Market Member	Remote Member	Market Maker	Proprietary	Market Maker	Agent	General Clearing	Direct Clearing	Non Clearing
A. SARRIS SECURITIES S.A.				a								
6, DRAGATSANIOU STR. ATHINA	(210)-3367700	(210)-3312324										
AGRICULTURAL BANK OF GREECE S.A.				a				a			a	
, 23 PANEPISTIMIOU ATHINA	(210)-3298400	(210)-3298322										
ALPHA FINANCE INVESTMENT SERVICES S.A.				a		a					a	
5, MERLIN STR. ATHINA	(210)-3677400	(210)-3311193										
ALPHA BANK A.E.							a			a		
40, STADIOU STR ATHINA	(210)-3265546	(210)-3265811										
	(210)-3260000	(210)-3264116										
ARGUS STOCKBROKERS LTD				a	a							
12-14, KENNEDY AVE. S. 303 NICOSIA	(+35722)-22717000	(+35722)-22717070										
ATHENAIKI BROKERAGE FIRM S.A.				a								
33, STADIOU STR. ATHINA	(210)-3254764	(210)-3254767										
ATLANTIC SECURITIES LIMITED				a	a							
37, PRODROMOU STR. NICOSIA	(+35722)-445400	(+35722)-661914										
ATLAS SECURITIES S.A.				a			a					a
14 - 16, VERVENON STR.& 125 MICHALAKOPOULOU STR. ATHINA	(210)-3363300	(210)-3238925										
ATTICA BANK S.A.										a		
54, AKADIMIAS STR. ATHINA	(210)-3390757	(210)-3646090										
23, OMIROU STR. ATHINA	(210)-3669000	(210)-3669410										
AXIA VENTURES GROUP LTD				a	a							
10, G. KRANIDIOTI NICOSIA	+357 22 742000	+357 22 742001										
AXON SECURITIES S.A.				a			a					a
48, STADIOU ATHINA	(210)-3363800	(210)-3243903										
BANK OF CYPRUS PUBLIC COMPANY LTD										a		
, 51,STASINOU (AG. PARASKEVI, STROVOLOS) NICOSIA	(0035722)-121883	(0035722)-336258										
170, ALEXANDRAS AVE ATHINA	(210)-6477708	(210)-6477709										
BETA SECURITIES S.A.				a		a	a	a			a	
, BRAILA & 29 ALEXANDRAS AVE ATHINA	(210)-6478900	(210)-6410139										
BNP PARIBAS SECURITIES SERVICES										a		
94, VAS. SOFIAS AVE ATHINA	(210)-7468500	(210)-7468579										
CAPITAL SECURITIES S.A.				a			a					a
58, MITROPOLEOS STR. ATHINA	(210)-3369700	(210)-3369820										
CFS SECURITIES & INVESTMENT SERVICES S.A.				a		a			a		a	
3, STADIOU STR. ATHINA	(210)-3360800	(210)-3311854										
CITIGROUP GLOBAL MARKET LTD				a	a							
, CITIGROUP CENTRE, CANADA SQUARE, CANARY WHART LONDO	002079864000	002079862266										
CO-OPERATIVE CENTRAL BANK LTD				a	a							
8, GRIGORI AFXENTIOU STR. NICOSIA	(+35722)-743300	(+35722)-672083										
CREDIT AGRICOLE CHEUVREUX S.A.				a	a							
, 9 QUAI PAUL DOUMER PARIS	33 (0) 1 41 89 70 00											
CREDIT SUISSE SECURITIES (EUROPE) LIMITED				a	a							
, ONE CABOT SQUARE LONDON	+44 20 7888 8888	+44 20 7888 1600										
CYCLOS SECURITIES S.A.				a		a	a				a	
39, PANEPISTIMIOU STR. ATHINA	(210)-3364300	(210)-3239122										
D.A. TSEKOURAS SEC. S.A.				a								
3, PESMAZOGLOU STR. ATHINA	(210)-3214406	(210)-3211997										
DEUTSCHE BANK S.A.				a	a							
70, THEODOR-HEUSS-ALLEE FRANKFURT	0049 69 910 00	0049 69 910 34 225										
DYNAMIC SECURITIES				a					a		a	
6 - 10, CHAR. TRIKOUPH STR. ATHINA	(210)-3677700	(210)-3677777										
EL. PETROPOULAKIS SECURITIES S.A.				a					a			a
9, ARISTIDOU STR. ATHINA	(210)-3213928	(210)-3216810										
EUROBANK EQUITIES S.A.				a		a		a			a	
10, FILELLINON STR. ATHINA	(210)-3720000	(210)-3720001										
EUROBANK ERGASIAS S.A.										a		
8, OTHONOS STR. ATHINA	(210)-3337000	(210)-3233866										
	(210)-3337969	(210)-3245916										
EUROCORP SECURITIES S.A.				a			a				a	
14, FILIKIS ETAIRIAS SQ. ATHINA	(210)-7263500	(210)-7263666										
EUROTRUST BROKERAGE S.A.				a								
13-15, SOPHOCLEOUS STR. ATHINA	(210)-3363100	(210)-3238334										
EUROXX SECURITIES S.A.				a			a				a	
7, PALAIOLOGOU STR. CHALANDRI	(210)-6879400	(210)-6879401										
G.A. PERVANAS SECURITIES & INVESTMENT SERVICES CO S.A.				a			a					a
7 - 9, SOPHOCLEOUS STR. ATHINA	(210)-3251875	(210)-3210291										



Athex & ATHEXClear Members List

Member Name	Stock Market			Derivatives Market			ATHEXClear Member					
	Address	Phone	Fax	Market Member	Remote Member	Market Maker	Proprietary	Market Maker	Agent	General Clearing	Direct Clearing	Non Clearing
GENERAL BANK OF GREECE S.A.										a		
87-89, ERMOY ATHINA	(210)-6976072	(210)-6976079										
, 109-111, MESOGEION AVE. ATHINA	(210)-6975000	(210)-6975706										
GLOBAL CAPITAL SECURITIES AND FINANCIAL SERVICES LTD				a	a							
5, LEMESOU AVE. LEMESOS CYPRUS	(+35722)-710710	(+35722)-339332										
GUARDIAN TRUST SECURITIES S.A				a		a	a					a
15, FILELLINON STR. ATHINA	(210)-3220402	(210)-3220498										
HELLENIC AMERICAN SEC. S.A.				a			a					
6, EVRIPIDOU STR. ATHINA	(210)-3311100	(210)-3215968										
HELLENIC BANK (INVESTMENTS) LTD				a	a							
31, KYRIAKOY MATSI AVE. NICOSIA	(+35722)-500100	(+35722)-500110										
HSBC BANK PLC										a		
109-111, MESOGION AVE ATHINA	(210)-6961507	(210)-6929310										
INDEX SECURITIES S.A.				a								
6, DRAGATSANIOU STR. ATHINA	(210)-3213920	(210)-3213216										
INTERSEC S.A.							a				a	
80-88, SYGROU AVE ATHINA	(210)-9203000	(210)-9203052										
INVESTMENT BANK OF GREECE S.A.				a		a		a		a		
24B, KIFISSIAS AVE MAROUSI	(210)-8171800	(210)-8171889										
32, AGEIALIAS MAROUSI	(210) 8173000	(210) 8173101										
J. CHR. MAVRIKIS SECURITIES S.A.				a								
5, SOPHOCLEOUS STR. ATHINA	(210)-3213949	(210)-3217767										
KAPPA SECURITIES S.A.				a			a					a
15, VALAORITOU STR. ATHINA	(210)-3610371	(210)-3641002										
KYPROU SECURITIES S.A.				a		a	a					a
26, HALKIDONOS & FIDIPPIDOY STR. ATHINA	(210)-8701000	(210)-8701049										
LAIKI FINANCIAL SERVICES LTD				a	a							
26, CLR HOUSE, VIRONOS AVE. NICOSIA	(+35722)-898600	(+35722)-680953										
LEON DEPOLAS SECURITIES S.A.				a					a			a
1, CHR. LADA STR. ATHINA	(210)-3213286	(210)-3211618										
MAGNA TRUST SECURITIES S.A				a					a			a
9, FIDIOU STR. ATHINA	(210)-3327503	(210)-3327599										
MEGA EQUITY SECURITIES & FINANCIAL SERVICES LTD				a	a							
42-44, GRIBA DIGENI AV. NICOSIA	(+35722)-711711	(+35722)-711811										
MERIT SECURITIES S.A				a		a	a				a	
38, VAS. KONSTANTINOY STR. ATHINA	(210)-3671800	(210)-3671830										
MERRILL LYNCH				a	a							
2, KING EDWARD STREET LONDON	(+4420)-79952000	(+4420)-79954525										
METOCHIKI SECURITIES S.A.				a								
3, G. GENNADIOU STR. ATHINA	(210)-3306700	(210)-3306709										
MIDAS BROKERAGE S.A.				a								
5, SOPHOCLEOUS STR. ATHINA	(210)-3253203	(210)-3253205										
N. CHRISOCHOIDES BROKERAGE FIRM S.A.				a					a		a	
7 - 9, SOPHOCLEOUS STR. ATHINA	(210)-3213913	(210)-3216115										
N. SARROS SECURITIES S.A.							a					
7-9, SOPHOCLEOUS STR. ATHINA	(210)-3705600	(210)-3219992										
NATIONAL BANK OF GREECE S.A.								a		a		
86, AIOLOU STR. ATHINA	(210)-3341000	(210)-3228187										
68, AKADIMIAS STR. ATHINA	(210)-3328817	(210)-3328678										
NBG SECURITIES S.A.				a		a		a				a
68, AKADIMIAS STR. ATHINA	(210)-3328500	(210)-3328565										
NEW PROTON BANK S.A.				a			a				a	
20, ESLIN & AMALIADOS ATHINA	210 6970000	210 6970111										
NIC. COMNINOS SECURITIES S.A.				a					a			a
33, STADIOU STR. ATHINA	(210)-3215234	(210)-3218847										
NUNTIUS SECURITIES S.A				a					a			a
6, DRAGATSANIOU STR. ATHINA	(210)-3350599	(210)-3254846										
OLYMPIA SECURITIES S.A				a								
46B, A. METAXA STR. GLYFADA	(210)-3702500	(210)-3702520										
ORANGE PARTNERS SECURITIES S.A				a								
5, TZORTZ STR. ATHINA	(210)-3300009	(210)-3305240										
PANTELAKIS SEC. S.A.				a			a					a
109-111, MESOGION AVE. ATHINA	(210)-6965000	(210)-6929550										
PEGASUS BROKERAGE FIRM S.A				a			a					
17, VALAORITOU STR. ATHINA	(210)-3670700	(210)-3670760										
PIRAEUS BANK S.A.									a	a		
4, AMERIKIS STR ATHINA	(210)-3335918	(210)-3254207										
4, AMERIKIS STR. ATHINA	(210)-3335000	(210)-3335079										

**Athex & ATHEXClear Members List**

Member Name				Stock Market			Derivatives Market			ATHEXClear Member		
	Address	Phone	Fax	Market Member	Remote Member	Market Maker	Proprietary	Market Maker	Agent	General Clearing	Direct Clearing	Non Clearing
PIRAEUS SECURITIES S.A.				a				a			a	
10, STADIU STR. ATHINA	(210)-3354100	(210)-3233814										
PRELIUM SECURITIES & INVESTMENT SERVICES S.A.				a			a					a
, KIFISSIAS AVE & 1 DAVAKI STR ATHINA	(210)-3677000	(210)-6920403										
PROBANK S.A.				a								
10, AMERIKIS STR. ATHINA	(210)-3392631	(210)-3392646										
PROCHOICE SECURITIES LTD				a	a							
57, SPYROU KYPRIANOY NICOSIA	+357-24-661192	+357-24-662464										
SHARELINK SECURITIES & FINANCIAL SERVICES LTD				a	a							
6, ELLINAS HOUSE, THEOTOKI STR. NICOSIA	(+35722)-554200	(+35722)-750852										
SOCIETE GENERALE S.A.				a	a		a					
17, COURS VALMY PUTEAUX - LA DEFENSE PARIS	(+33) 142134754	(+33) 142135697										
240-242, KIFISSIAS AVE ATHINA	(210)-6790161	(210)-6728828										
SOLIDUS SECURITIES S.A				a			a				a	
64, LOUIZIS RIANKOUR STR. ATHINA	(210)-6925500	(210)-6985421										
SOTIRIADIS SECURITIES S.A.				a								
7, VALAORITOU STR. ATHINA	(210)-3636943	(210)-3601943										
ST. EM. LAVRENTAKIS SECURITIES S.A.				a			a					a
7 - 9, SOPHOCLEOUS STR. ATHINA	(210)-3213336	(210)-3246572										
THE CYPRUS INVESTMENT AND SECURITIES CORPORATION LIMITED (CISCO)				a	a							
4, EVROU STR. (EUROLIFE HOUSE) NICOSIA	(+35722)-881800	(+35722)-881801										
UBS LIMITED				a	a							
1, FINSBURY AVENUE LONDON	(+4420)-79013333	(+4420)-79012345										
Z.G. PORTALAKIS INVESTMENT SERVICES S.A.				a								
8, PESMAZOGLOU STR. ATHINA	(210)-3214830	(210)-3212024										
KARAMANOF SECURITIES & INV. SERVICES S.A.				a					a		a	
2, SQ. ST THEODORON ATHINA	(210)-3212947	(210)-3217088										

List of Stocks under Market Making operations

Stocks	Market Maker	Stock Category	
		Start Market Making	End Market Making
<b>ATE (CR)</b>		Under Suspension	
	INVESTMENT BANK OF GREECE S.A.	28/3/2012	27/3/2013
<b>TT HELLENIC POSTBANK (CR)</b>		Under Suspension	
	INVESTMENT BANK OF GREECE S.A.	28/3/2012	27/3/2013
<b>ALPHA BANK (CR)</b>		Main Market	
	EUROBANK EQUITIES S.A.	24/10/2012	23/10/2013
	INVESTMENT BANK OF GREECE S.A.	8/1/2013	7/1/2014
	MERIT SECURITIES S.A.	3/9/2012	2/9/2013
	NBG SECURITIES S.A.	15/1/2013	14/1/2014
	PIRAEUS SECURITIES S.A.	28/5/2012	27/5/2013
<b>ALUMIL (CR)</b>		Main Market	
	BETA SECURITIES S.A.	18/7/2012	17/7/2013
<b>BANK OF CYPRUS (CR)</b>		Main Market	
	EUROBANK EQUITIES S.A.	23/10/2012	22/10/2013
	INVESTMENT BANK OF GREECE S.A.	2/1/2013	1/1/2014
	NBG SECURITIES S.A.	25/6/2012	24/6/2013
<b>BYTE COMPUTER SA (CR)</b>		Main Market	
	MERIT SECURITIES S.A.	4/8/2012	3/8/2013
<b>COCA - COLA HBC (CR)</b>		Main Market	
	EUROBANK EQUITIES S.A.	23/10/2012	22/10/2013
	INVESTMENT BANK OF GREECE S.A.	8/1/2013	7/1/2014
	NBG SECURITIES S.A.	25/6/2012	24/6/2013
<b>CYPRUS POPULAR BANK (CR)</b>		Main Market	
	NBG SECURITIES S.A.	2/6/2012	1/6/2013
	PIRAEUS SECURITIES S.A.	2/2/2013	1/2/2014
<b>ELLAKTOR (CR)</b>		Main Market	
	EUROBANK EQUITIES S.A.	1/6/2012	31/5/2013
	INVESTMENT BANK OF GREECE S.A.	2/1/2013	1/1/2014
	NBG SECURITIES S.A.	25/6/2012	24/6/2013
<b>ELTON SA (CR)</b>		Main Market	
	BETA SECURITIES S.A.	3/9/2012	2/9/2013
<b>EUROBANK ERGASIAS (CR)</b>		Main Market	
	ALPHA FINANCE INVESTMENT SERVICES S.A.	8/1/2013	7/1/2014
	EUROBANK EQUITIES S.A.	1/6/2012	31/5/2013
	INVESTMENT BANK OF GREECE S.A.	8/1/2013	7/1/2014
	NBG SECURITIES S.A.	26/3/2012	25/3/2013
<b>FRIGOGLOSS SA (CR)</b>		Main Market	
	EUROBANK EQUITIES S.A.	18/7/2012	17/7/2013
<b>GEK TERNA (CR)</b>		Main Market	
	INVESTMENT BANK OF GREECE S.A.	2/1/2013	1/1/2014
<b>GR. SARANTIS SA (CR)</b>		Main Market	
	BETA SECURITIES S.A.	14/5/2012	13/5/2013
<b>HELLENIC EXCHANGES (CR)</b>		Main Market	
	EUROBANK EQUITIES S.A.	1/6/2012	31/5/2013
	INVESTMENT BANK OF GREECE S.A.	2/1/2013	1/1/2014
	NBG SECURITIES S.A.	25/6/2012	24/6/2013
<b>INTRACOM CONSTR. (CR)</b>		Main Market	
	MERIT SECURITIES S.A.	27/12/2012	26/12/2013
	MERIT SECURITIES S.A.	27/12/2011	26/12/2013
<b>INTRALOT (CR)</b>		Main Market	
	EUROBANK EQUITIES S.A.	1/6/2012	31/5/2013
	INVESTMENT BANK OF GREECE S.A.	2/1/2013	1/1/2014
<b>MARFIN INVESTMENT GROUP (CR)</b>		Main Market	
	PIRAEUS SECURITIES S.A.	2/2/2013	1/2/2014
<b>MLS MULTIMEDIA SA (CR)</b>		Main Market	
	BETA SECURITIES S.A.	28/5/2012	27/5/2013
<b>MOTOR OIL (CR)</b>		Main Market	
	EUROBANK EQUITIES S.A.	23/10/2012	22/10/2013
<b>MYTILINEOS HOLDINGS (CR)</b>		Main Market	
	INVESTMENT BANK OF GREECE S.A.	2/1/2013	1/1/2014
	NBG SECURITIES S.A.	25/6/2012	24/6/2013
<b>NATIONAL BANK (CR)</b>		Main Market	
	ALPHA FINANCE INVESTMENT SERVICES S.A.	8/1/2013	7/1/2014
	EUROBANK EQUITIES S.A.	24/10/2012	23/10/2013
	INVESTMENT BANK OF GREECE S.A.	8/1/2013	7/1/2014
	MERIT SECURITIES S.A.	3/9/2012	2/9/2013
	NBG SECURITIES S.A.	28/2/2012	27/2/2013

List of Stocks under Market Making operations

Stocks	Market Maker	Stock Category	
		Start Market Making	End Market Making
<b>OPAP (CR)</b>			
		<b>Main Market</b>	
	ALPHA FINANCE INVESTMENT SERVICES S.A.	8/1/2013	7/1/2014
	EUROBANK EQUITIES S.A.	24/10/2012	23/10/2013
	INVESTMENT BANK OF GREECE S.A.	8/1/2013	7/1/2014
	NBG SECURITIES S.A.	15/1/2013	14/1/2014
<b>OTE (CR)</b>			
		<b>Main Market</b>	
	ALPHA FINANCE INVESTMENT SERVICES S.A.	8/1/2013	7/1/2014
	EUROBANK EQUITIES S.A.	24/10/2012	23/10/2013
	INVESTMENT BANK OF GREECE S.A.	8/1/2013	7/1/2014
	NBG SECURITIES S.A.	1/12/2012	30/11/2013
<b>PETROPOULOS PETROS (CR)</b>			
		<b>Main Market</b>	
	BETA SECURITIES S.A.	28/5/2012	27/5/2013
<b>PIRAEUS BANK (CR)</b>			
		<b>Main Market</b>	
	EUROBANK EQUITIES S.A.	23/10/2012	22/10/2013
	INVESTMENT BANK OF GREECE S.A.	8/1/2013	7/1/2014
	NBG SECURITIES S.A.	2/6/2012	1/6/2013
	PIRAEUS SECURITIES S.A.	16/2/2013	15/2/2014
<b>PPC (CR)</b>			
		<b>Main Market</b>	
	ALPHA FINANCE INVESTMENT SERVICES S.A.	8/1/2013	7/1/2014
	EUROBANK EQUITIES S.A.	23/10/2012	22/10/2013
	INVESTMENT BANK OF GREECE S.A.	8/1/2013	7/1/2014
	NBG SECURITIES S.A.	26/3/2012	25/3/2013
<b>TITAN CEMENT (CR)</b>			
		<b>Main Market</b>	
	EUROBANK EQUITIES S.A.	23/10/2012	22/10/2013
<b>VIOHALCO (CB)</b>			
		<b>Main Market</b>	
	ALPHA FINANCE INVESTMENT SERVICES S.A.	11/3/2012	10/3/2013
	EUROBANK EQUITIES S.A.	20/1/2013	19/1/2014
	MERIT SECURITIES S.A.	13/12/2012	12/12/2013

Underlying Asset				Derivatives Market																		
Price max	Price min	Closing price	change	Delivery Month	Open price	Price max	Price min	Last price	Closing price	Last Bid	Last Ask	Settlement price	change	Life high	Life low	Trades	Volume	change	Value	change	Open Interest	change
<b>FTSE/Athex Large Cap</b>				(Trade Unit: 1 Index Point x 5€, Cash Settlement)																		
348,87	341,85	348,87	1,25%	March 2013	348,25	353,00	344,75	351,25	352,50	1@351,25	10@352,50	352,50	1,59%	359,25	285,50	374	3.823	18,51%	6.678.892,50	18,00%	39.158	1,62%
				June 2013	---	---	---	---	---	---	---	---	---	---	---	---	---	---	---	---	---	---
				September 2013	---	---	---	---	---	---	---	---	---	---	---	---	---	---	---	---	---	---
				December 2013	---	---	---	---	---	---	---	---	---	---	---	---	---	---	---	---	---	---
<b>FTSE/ATHEX-CSE Banking Index</b>				(Trade Unit: 1 Index Point x 1€, Cash Settlement)																		
142,88	137,96	142,26	3,17%	March 2013	---	---	---	---	149,50	---	---	149,50	3,10%	168,50	141,25	---	---	---	---	---	5	0,00%
				April 2013	---	---	---	---	---	---	---	---	---	---	---	---	---	---	---	---	---	---
				May 2013	---	---	---	---	---	---	---	---	---	---	---	---	---	---	---	---	---	---
				June 2013	---	---	---	---	---	---	---	---	---	---	---	---	---	---	---	---	---	---
				September 2013	---	---	---	---	---	---	---	---	---	---	---	---	---	---	---	---	---	---
				December 2013	---	---	---	---	---	---	---	---	---	---	---	---	---	---	---	---	---	---

Underlying Asset				Derivatives Market																		
Price max	Price min	Closing price	change	Delivery Month	Open price	Price max	Price min	Last price	Closing price	Last Bid	Last Ask	Settlement price	change	Life high	Life low	Trades	Volume	change	Value	change	Open Interest	change
(Contract Size: 100 Stocks, Physical Delivery)																						
1,19	1,15	1,19	2,59%	March 2013	1,16	1,20	1,14	1,20	1,18	10@1,19	275@1,20	1,18	1,72%	2,03	1,13	190	8.931	85,87%	1.043.471,00	82,31%	35.110	-0,19%
				June 2013	---	---	---	---	1,15	1@1,11	10@1,19	1,15	1,77%	1,95	1,14	---	---	-100,00%	---	-100,00%	473	0,00%
				September 2013	---	---	---	---	1,17	---	---	1,17	1,74%	1,46	1,19	---	---	---	---	---	50	0,00%
				December 2013	---	---	---	---	---	---	---	---	---	---	---	---	---	---	---	---	---	---
(Contract Size: 100 Stocks, Physical Delivery)																						
0,271	0,250	0,270	6,72%	March 2013	0,255	0,273	0,251	0,273	0,271	20@0,271	50@0,272	0,271	9,27%	0,390	0,225	94	2.354	0,94%	62.691,60	7,40%	41.396	0,01%
				June 2013	---	---	---	---	0,264	1@0,250	100@0,280	0,264	9,09%	0,272	0,270	---	---	---	---	---	---	---
				September 2013	---	---	---	---	---	---	---	---	---	---	---	---	---	---	---	---	---	---
				December 2013	---	---	---	---	---	---	---	---	---	---	---	---	---	---	---	---	---	---
(Contract Size: 100 Stocks, Physical Delivery)																						
20,12	19,40	20,10	3,98%	March 2013	19,55	20,50	19,55	20,02	19,95	1@19,87	19@20,02	19,95	2,52%	20,90	14,41	35	109	67,69%	217.135,00	72,08%	842	-5,92%
				June 2013	---	---	---	---	19,74	9@16,89	19@20,09	19,74	2,55%	20,70	16,62	---	---	---	---	---	2	0,00%
				September 2013	---	---	---	---	---	---	---	---	---	---	---	---	---	---	---	---	---	---
				December 2013	---	---	---	---	---	---	---	---	---	---	---	---	---	---	---	---	---	---
(Contract Size: 100 Stocks, Physical Delivery)																						
0,047	0,043	0,045	2,27%	March 2013	0,048	0,048	0,048	0,048	0,049	20@0,043	70@0,048	0,049	2,08%	0,432	0,036	4	130	---	624,00	---	13.993	0,21%
				June 2013	---	---	---	---	0,045	---	70@0,058	0,045	2,27%	0,044	0,044	---	---	-100,00%	---	-100,00%	50	0,00%
				September 2013	---	---	---	---	---	---	---	---	---	---	---	---	---	---	---	---	---	---
				December 2013	---	---	---	---	---	---	---	---	---	---	---	---	---	---	---	---	---	---
(Contract Size: 100 Stocks, Physical Delivery)																						
2,13	2,08	2,13	1,43%	March 2013	2,10	2,13	2,10	2,13	2,13	4@2,12	10@2,14	2,13	1,43%	2,39	1,36	9	48	-44,19%	10.168,00	-44,17%	9.528	0,51%
				June 2013	---	---	---	---	2,10	---	10@2,18	2,10	1,45%	2,34	1,54	---	---	---	---	---	1	0,00%
				September 2013	---	---	---	---	2,10	---	---	2,10	1,45%	2,21	2,07	---	---	---	---	---	---	---
				December 2013	---	---	---	---	---	---	---	---	---	---	---	---	---	---	---	---	---	---
(Contract Size: 100 Stocks, Physical Delivery)																						
0,467	0,450	0,460	1,77%	March 2013	0,455	0,476	0,454	0,461	0,490	29@0,461	10@0,469	0,490	1,87%	1,27	0,449	75	3.148	132,32%	147.255,50	134,64%	4.512	-9,40%
				June 2013	---	---	---	---	0,492	---	10@0,479	0,492	1,86%	0,639	0,612	---	---	---	---	---	---	---
				September 2013	---	---	---	---	---	---	---	---	---	---	---	---	---	---	---	---	---	---
				December 2013	---	---	---	---	---	---	---	---	---	---	---	---	---	---	---	---	---	---
(Contract Size: 100 Stocks, Physical Delivery)																						
5,90	5,73	5,85	2,09%	March 2013	5,89	5,89	5,81	5,85	5,95	1@5,70	9@5,89	5,95	2,06%	6,39	4,93	9	41	215,38%	23.903,00	211,03%	624	-5,60%
				June 2013	---	---	---	---	---	---	9@5,96	---	---	---	---	---	---	---	---	---	---	---
				September 2013	---	---	---	---	---	---	---	---	---	---	---	---	---	---	---	---	---	---
				December 2013	---	---	---	---	---	---	---	---	---	---	---	---	---	---	---	---	---	---
(Contract Size: 100 Stocks, Physical Delivery)																						
6,07	5,77	6,04	3,25%	March 2013	5,82	5,95	5,82	5,95	6,10	2@5,94	1@6,12	6,10	3,21%	6,20	5,15	7	28	1300,00%	16.516,00	1298,48%	406	3,57%
				June 2013	---	---	---	---	---	---	1@6,18	---	---	---	---	---	---	---	---	---	---	---
				September 2013	---	---	---	---	---	---	---	---	---	---	---	---	---	---	---	---	---	---
				December 2013	---	---	---	---	---	---	---	---	---	---	---	---	---	---	---	---	---	---

Underlying Asset				Derivatives Market																		
Price max	Price min	Closing price	change	Delivery Month	Open price	Price max	Price min	Last price	Closing price	Last Bid	Last Ask	Settlement price	change	Life high	Life low	Trades	Volume	change	Value	change	Open Interest	change
<b>GEK TERNA (CR)</b>				(Contract Size: 100 Stocks, Physical Delivery)																		
2,33	2,27	2,30	-1,29%	March 2013	2,31	2,34	2,29	2,30	2,33	2@2,29	23@2,35	2,33	-1,27%	2,79	1,33	11	78	-82,35%	17.976,00	-83,01%	17.643	0,13%
				June 2013	2,31	2,31	2,31	2,31	2,32	---	23@2,39	2,32	-0,85%	2,71	1,37	1	50	---	11.550,00	---	16.045	0,31%
				September 2013	---	---	---	---	2,31	---	---	2,31	-1,28%	2,62	2,36	---	---	---	---	---	---	---
				December 2013	---	---	---	---	---	---	---	---	---	---	---	---	---	---	---	---	---	---
<b>HELL. DUTY FREE SHOPS SA (CR)</b>				(Contract Size: 100 Stocks, Physical Delivery)																		
13,70	13,54	13,66	0,07%	March 2013	---	---	---	---	13,55	5@13,10	10@14,20	13,55	0,07%	14,20	12,80	---	---	-100,00%	---	-100,00%	527	0,00%
				June 2013	---	---	---	---	---	---	10@14,35	---	---	---	---	---	---	---	---	---	---	---
				September 2013	---	---	---	---	---	---	---	---	---	---	---	---	---	---	---	---	---	---
				December 2013	---	---	---	---	---	---	---	---	---	---	---	---	---	---	---	---	---	---
<b>HELLENIC EXCHANGES (CR)</b>				(Contract Size: 100 Stocks, Physical Delivery)																		
5,41	5,34	5,36	-0,37%	March 2013	5,36	5,40	5,36	5,37	5,38	17@5,35	3@5,40	5,38	-0,37%	5,56	3,26	12	69	-17,86%	37.167,00	-18,25%	2.677	2,06%
				June 2013	---	---	---	---	5,43	---	3@5,46	5,43	-0,37%	5,46	3,28	---	---	---	---	---	1	0,00%
				September 2013	---	---	---	---	5,37	---	---	5,37	-0,37%	4,97	4,90	---	---	---	---	---	---	---
				December 2013	---	---	---	---	---	---	---	---	---	---	---	---	---	---	---	---	---	---
<b>HELLENIC PETROLEUM (CR)</b>				(Contract Size: 100 Stocks, Physical Delivery)																		
8,83	8,70	8,74	-0,57%	March 2013	8,74	8,80	8,72	8,76	8,75	3@8,73	1@8,87	8,75	-0,57%	9,10	6,34	16	64	-25,58%	56.084,00	-26,41%	2.196	0,23%
				June 2013	---	---	---	---	---	---	1@8,93	---	---	---	---	---	---	---	---	---	---	---
				September 2013	---	---	---	---	---	---	---	---	---	---	---	---	---	---	---	---	---	---
				December 2013	---	---	---	---	---	---	---	---	---	---	---	---	---	---	---	---	---	---
<b>INTRALOT (CR)</b>				(Contract Size: 100 Stocks, Physical Delivery)																		
2,28	2,22	2,25	-0,44%	March 2013	2,28	2,28	2,23	2,26	2,28	6@2,26	13@2,28	2,28	0,00%	2,38	1,12	35	193	-84,79%	43.736,00	-85,27%	10.143	0,76%
				June 2013	---	---	---	---	2,24	---	13@2,31	2,24	0,00%	1,53	1,47	---	---	---	---	---	---	---
				September 2013	---	---	---	---	---	---	---	---	---	---	---	---	---	---	---	---	---	---
				December 2013	---	---	---	---	---	---	---	---	---	---	---	---	---	---	---	---	---	---
<b>JUMBO SA (CR)</b>				(Contract Size: 100 Stocks, Physical Delivery)																		
7,70	7,35	7,70	3,08%	March 2013	7,43	7,64	7,43	7,64	7,67	5@7,51	5@7,87	7,67	3,09%	7,64	5,90	3	7	---	5.240,00	---	297	0,00%
				June 2013	---	---	---	---	---	---	5@7,97	---	---	---	---	---	---	---	---	---	---	---
				September 2013	---	---	---	---	---	---	---	---	---	---	---	---	---	---	---	---	---	---
				December 2013	---	---	---	---	---	---	---	---	---	---	---	---	---	---	---	---	---	---
<b>MARFIN INVESTMENT GROUP (CR)</b>				(Contract Size: 100 Stocks, Physical Delivery)																		
0,511	0,494	0,508	2,42%	March 2013	0,504	0,515	0,494	0,510	0,508	2@0,508	36@0,510	0,508	2,21%	0,568	0,324	22	166	-24,20%	8.381,30	-23,54%	23.594	0,44%
				June 2013	---	---	---	---	0,527	---	36@0,520	0,527	2,13%	0,531	0,477	---	---	---	---	---	1	0,00%
				September 2013	---	---	---	---	---	---	---	---	---	---	---	---	---	---	---	---	---	---
				December 2013	---	---	---	---	---	---	---	---	---	---	---	---	---	---	---	---	---	---
<b>METKA (CR)</b>				(Contract Size: 100 Stocks, Physical Delivery)																		
12,59	11,99	12,40	0,81%	March 2013	12,50	12,50	12,44	12,44	12,34	5@12,10	1@12,48	12,34	0,82%	12,60	6,35	3	9	-40,00%	11.227,00	-39,08%	736	0,00%
				June 2013	---	---	---	---	12,67	---	1@12,57	12,67	0,80%	11,54	9,63	---	---	---	---	---	---	---
				September 2013	---	---	---	---	---	---	---	---	---	---	---	---	---	---	---	---	---	---
				December 2013	---	---	---	---	---	---	---	---	---	---	---	---	---	---	---	---	---	---

Underlying Asset				Derivatives Market																		
Price max	Price min	Closing price	change	Delivery Month	Open price	Price max	Price min	Last price	Closing price	Last Bid	Last Ask	Settlement price	change	Life high	Life low	Trades	Volume	change	Value	change	Open Interest	change
(Contract Size: 100 Stocks, Physical Delivery)																						
9,11	8,96	9,09	0,11%	March 2013	9,02	9,10	9,00	9,09	9,13	1@8,99	1@9,17	9,13	0,11%	9,32	6,65	17	95	-22,13%	85.655,00	-23,02%	685	1,63%
				June 2013	---	---	---	---	9,16	---	1@9,23	9,16	0,11%	7,99	7,40	---	---	---	---	---	---	---
				September 2013	---	---	---	---	---	---	---	---	---	---	---	---	---	---	---	---	---	---
				December 2013	---	---	---	---	---	---	---	---	---	---	---	---	---	---	---	---	---	---
(Contract Size: 100 Stocks, Physical Delivery)																						
5,47	5,26	5,44	0,37%	March 2013	5,40	5,47	5,25	5,45	5,44	10@5,44	9@5,45	5,44	-0,37%	5,65	2,10	68	252	26,00%	134.992,00	23,09%	6.040	-0,53%
				June 2013	---	---	---	---	5,41	1@5,25	9@5,49	5,41	-0,37%	5,50	3,32	---	---	---	---	---	1.850	0,00%
				September 2013	---	---	---	---	5,40	---	---	5,40	-0,37%	5,50	4,63	---	---	---	---	---	210	0,00%
				December 2013	---	---	---	---	---	---	---	---	---	---	---	---	---	---	---	---	---	---
(Contract Size: 100 Stocks, Physical Delivery)																						
1,02	0,995	1,02	2,51%	March 2013	0,963	0,995	0,951	0,985	0,989	5@0,980	120@0,985	0,989	2,59%	2,43	0,932	177	4.538	14,89%	440.423,50	14,71%	83.936	1,17%
				June 2013	---	---	---	---	0,999	4@0,910	120@0,995	0,999	2,57%	2,28	0,959	---	---	---	---	---	81	0,00%
				September 2013	---	---	---	---	1,04	---	---	1,04	2,97%	1,36	1,00	---	---	---	---	---	100	0,00%
				December 2013	---	---	---	---	---	---	---	---	---	---	---	---	---	---	---	---	---	---
(Contract Size: 100 Stocks, Physical Delivery)																						
7,45	7,23	7,40	-0,67%	March 2013	7,37	7,42	7,21	7,42	7,35	15@7,40	17@7,42	7,35	-0,94%	14,71	3,80	245	1.723	-22,04%	1.262.719,00	-23,89%	15.250	-5,10%
				June 2013	---	---	---	---	7,21	1@4,75	17@7,46	7,21	-0,96%	7,11	4,19	---	---	---	---	---	---	---
				September 2013	---	---	---	---	7,31	---	---	7,31	-0,95%	6,45	5,97	---	---	---	---	---	---	---
				December 2013	---	---	---	---	---	---	---	---	---	---	---	---	---	---	---	---	---	---
(Contract Size: 100 Stocks, Physical Delivery)																						
6,30	6,16	6,21	-1,27%	March 2013	6,32	6,32	6,15	6,22	6,20	30@6,21	20@6,23	6,20	-1,59%	6,82	2,86	200	2.749	86,12%	1.708.054,00	81,67%	28.224	-2,04%
				June 2013	6,23	6,31	6,23	6,31	6,30	1@4,80	50@6,26	6,30	0,64%	6,71	2,95	6	161	7,33%	101.412,00	5,97%	410	-26,13%
				September 2013	---	---	---	---	6,25	---	---	6,25	-1,57%	6,50	5,75	---	---	---	---	---	50	0,00%
				December 2013	---	---	---	---	---	---	---	---	---	---	---	---	---	---	---	---	---	---
(Contract Size: 100 Stocks, Physical Delivery)																						
19,00	18,71	19,00	0,00%	March 2013	18,85	18,89	18,85	18,89	19,06	1@18,70	1@19,10	19,06	0,00%	20,51	16,74	3	3	0,00%	5.659,00	-1,24%	132	0,00%
				June 2013	---	---	---	---	---	---	---	---	---	---	---	---	---	---	---	---	---	---
				September 2013	---	---	---	---	---	---	---	---	---	---	---	---	---	---	---	---	---	---
				December 2013	---	---	---	---	---	---	---	---	---	---	---	---	---	---	---	---	---	---
(Contract Size: 100 Stocks, Physical Delivery)																						
0,287	0,277	0,284	2,53%	March 2013	0,276	0,285	0,269	0,285	0,282	119@0,282	28@0,285	0,282	3,68%	0,656	0,260	136	4.875	36,06%	135.271,10	36,35%	58.434	3,88%
				June 2013	---	---	---	---	0,284	---	28@0,295	0,284	3,65%	0,659	0,282	---	---	---	---	---	101	0,00%
				September 2013	---	---	---	---	0,284	---	---	0,284	3,65%	0,322	0,285	---	---	---	---	---	700	0,00%
				December 2013	---	---	---	---	---	---	---	---	---	---	---	---	---	---	---	---	---	---
(Contract Size: 100 Stocks, Physical Delivery)																						
8,07	7,81	8,04	1,39%	March 2013	7,85	8,07	7,83	8,05	8,04	13@8,04	55@8,05	8,04	1,01%	8,09	3,18	203	1.600	-12,47%	1.269.577,00	-12,88%	7.519	0,62%
				June 2013	7,94	8,11	7,90	8,08	8,09	20@8,04	55@8,09	8,09	-0,12%	8,15	3,54	31	304	102,67%	243.543,00	100,50%	399	262,73%
				September 2013	---	---	---	---	8,04	---	---	8,04	1,01%	7,80	6,23	---	---	---	---	---	100	0,00%
				December 2013	---	---	---	---	---	---	---	---	---	---	---	---	---	---	---	---	---	---



Underlying Asset				Derivatives Market																		
Price max	Price min	Closing price	change	Delivery Month	Open price	Price max	Price min	Last price	Closing price	Last Bid	Last Ask	Settlement price	change	Life high	Life low	Trades	Volume	change	Value	change	Open Interest	change
<b>SIDENOR (CR)</b>				(Contract Size: 100 Stocks, Physical Delivery)																		
2,08	2,01	2,04	-2,39%	March 2013	2,05	2,08	2,03	2,03	2,03	1@2,04	2@2,09	2,03	-2,87%	2,37	1,22	18	64	-62,35%	13,079,00	-62,87%	1,848	0,16%
				June 2013	---	---	---	---	---	---	2@2,14	---	---	---	---	---	---	---	---	---	---	---
				September 2013	---	---	---	---	---	---	---	---	---	---	---	---	---	---	---	---	---	---
				December 2013	---	---	---	---	---	---	---	---	---	---	---	---	---	---	---	---	---	---
<b>TERNA ENERGY (CR)</b>				(Contract Size: 100 Stocks, Physical Delivery)																		
3,56	3,43	3,52	0,57%	March 2013	3,44	3,53	3,43	3,53	3,53	20@3,47	3@3,58	3,53	-0,56%	3,71	3,12	8	85	26,87%	29,455,00	24,95%	3,165	-1,09%
				June 2013	---	---	---	---	---	---	3@3,64	---	---	---	---	---	---	---	---	---	---	---
				September 2013	---	---	---	---	---	---	---	---	---	---	---	---	---	---	---	---	---	---
				December 2013	---	---	---	---	---	---	---	---	---	---	---	---	---	---	---	---	---	---
<b>TITAN CEMENT (CR)</b>				(Contract Size: 100 Stocks, Physical Delivery)																		
14,80	14,52	14,80	0,34%	March 2013	14,72	14,82	14,56	14,82	14,86	1@14,53	1@14,82	14,86	0,34%	15,54	12,15	7	20	-47,37%	29,219,00	-47,78%	433	0,00%
				June 2013	---	---	---	---	---	---	1@14,94	---	---	---	---	---	---	---	---	---	---	---
				September 2013	---	---	---	---	---	---	---	---	---	---	---	---	---	---	---	---	---	---
				December 2013	---	---	---	---	---	---	---	---	---	---	---	---	---	---	---	---	---	---
<b>VIOHALCO (CB)</b>				(Contract Size: 100 Stocks, Physical Delivery)																		
5,40	5,28	5,40	0,00%	March 2013	5,42	5,42	5,31	5,36	5,36	3@5,36	1@5,53	5,36	-0,92%	5,67	3,22	21	71	39,22%	37,940,00	35,64%	370	-0,80%
				June 2013	---	---	---	---	---	---	1@5,58	---	---	---	---	---	---	---	---	---	---	---
				September 2013	---	---	---	---	---	---	---	---	---	---	---	---	---	---	---	---	---	---
				December 2013	---	---	---	---	---	---	---	---	---	---	---	---	---	---	---	---	---	---



FTSE/Athex Large Cap

(Trade Unit: 1 Index Point x 5€ - Exercise Style: European, Cash Settlement)

Exercise Price	Call Options															Put Options											Exercise Price						
	March 2013					April 2013					Other Months					March 2013					April 2013					Other Months							
	Open price	Price max	Price min	Last price	Closing price	Volume	Open Interest	Open price	Price max	Price min	Last price	Closing price	Volume	Open Interest	Volume	Open Interest	Open price	Price max	Price min	Last price	Closing price	Volume	Open Interest	Open price	Price max	Price min		Last price	Closing price	Volume	Open Interest	Volume	Open Interest
425	-	-	-	-	-	-	-	-	-	-	-	-	-	-	-	-	-	-	-	-	-	-	-	-	-	-	-	-	-	-	-	-	425
430	-	-	-	-	-	-	-	-	-	-	-	-	-	-	-	-	-	-	-	-	-	-	-	-	-	-	-	-	-	-	-	-	430
435	-	-	-	-	-	-	-	-	-	-	-	-	-	-	-	-	-	-	-	-	-	-	-	-	-	-	-	-	-	-	-	-	435
440	-	-	-	-	-	-	-	-	-	-	-	-	-	-	-	-	-	-	-	-	87,50	-	299	-	-	-	-	-	-	-	-	-	440
500	-	-	-	-	-	-	-	-	-	-	-	-	-	-	-	-	-	-	-	-	147,00	-	2	-	-	-	-	-	-	-	-	-	500
1.500	-	-	-	-	-	-	-	-	-	-	-	-	-	-	-	-	-	-	-	-	1.145,00	-	53	-	-	-	-	-	-	-	-	-	1.500
Totals:						680	3.384						0	0	0	2						140	1.345					0	9	0	0		
Nominal Transactions Value:						1.216.600,00							0,00	0,00								242.750,00					0,00	0,00					
Number of Trades:						71							0	0								10					0	0					

ALPHA BANK (CR)

(Contract Size: 100 Stocks, Exercise Style: American, Physical Delivery)

Exercise Price	Call Options														Put Options														Exercise Price				
	March 2013							June 2013							Other Months		March 2013							June 2013							Other Months		
	Open price	Price max	Price min	Last price	Closing price	Volume	Open Interest	Open price	Price max	Price min	Last price	Closing price	Volume	Open Interest	Volume	Open Interest	Open price	Price max	Price min	Last price	Closing price	Volume	Open Interest	Open price	Price max	Price min	Last price	Closing price		Volume	Open Interest	Volume	Open Interest
0,300																																	0,300
0,400																																	0,400
0,500																																	0,500
0,600																																	0,600
0,700																																	0,700
0,800																																	0,800
0,900																																	0,900
1,00					0,200		100																									1,00	
1,10																																	1,10
1,20																																	1,20
1,25																																	1,25
1,30											0,114		20																			1,30	
1,35																																	1,35
1,40																																	1,40
1,45																																	1,45
1,50																																	1,50
1,55																																	1,55
1,60																					0,410		4									1,60	
1,65																																	1,65
1,70																																	1,70
1,75																																	1,75
1,80							100																										1,80
1,90																																	1,90
2,00																																	2,00
2,20																																	2,20
2,40																																	2,40
2,60																																	2,60
2,80																																	2,80
Totals:						0	200						0	20	0	0						0	4					0	0	0	0		
Nominal Transactions Value:							0,00						0,00	0,00								0,00						0,00	0,00				
Number of Trades:							0						0	0								0,00						0	0				

NATIONAL BANK (CR)

(Contract Size: 100 Stocks, Exercise Style: American, Physical Delivery)

Exercise Price	Call Options														Put Options														Exercise Price					
	March 2013				June 2013				Other Months		March 2013				June 2013				Other Months															
	Open price	Price max	Price min	Last price	Closing price	Volume	Open Interest	Open price	Price max	Price min	Last price	Closing price	Volume	Open Interest	Volume	Open Interest	Open price	Price max	Price min	Last price	Closing price	Volume	Open Interest	Open price	Price max	Price min	Last price	Closing price		Volume	Open Interest	Volume	Open Interest	
0,500																																	0,500	
0,600																																		0,600
0,700																																		0,700
0,800																																		0,800
0,900																																		0,900
1,00					0,092		3																										1,00	
1,10																																		1,10
1,20					0,026		7				0,124		20																				1,20	
1,25					0,018		50																											1,25
1,30					0,013		50																											1,30
1,35																																		1,35
1,40					0,006		150																											1,40
1,45																																		1,45
1,50					0,003		20																											1,50
1,55					0,002		20																											1,55
1,60																																		1,60
1,65																																		1,65
1,70																																		1,70
1,75																																		1,75
1,80																																		1,80
1,90																																		1,90
2,00																																		2,00
2,20																																		2,20
2,40																																		2,40
2,60																					1,58		40										2,60	
2,80																																		2,80
3,00																																		3,00
3,20																																		3,20
Totals:						0	300						0	20		0	0																	
Nominal Transactions Value:							0,00						0,00	0,00																				
Number of Trades:							0						0	0																				

## OPAP (CR)

(Contract Size: 100 Stocks, Exercise Style: American, Physical Delivery)

Exercise Price	Call Options																Put Options															
	March 2013						June 2013						Other Months				March 2013						June 2013						Other Months			
	Open price	Price max	Price min	Last price	Closing price	Volume	Open Interest	Open price	Price max	Price min	Last price	Closing price	Volume	Open Interest	Volume	Open Interest	Open price	Price max	Price min	Last price	Closing price	Volume	Open Interest	Open price	Price max	Price min	Last price	Closing price	Volume	Open Interest	Volume	Open Interest
1,00				6,40	-	539						-	-									-	539					-	-			1,00
2,60					-	-						-	-									-	-					-	-			2,60
2,80					-	-						-	-									-	-					-	-			2,80
3,00					-	-						-	-									-	-					-	-			3,00
3,20					-	-						-	-									-	-					-	-			3,20
3,40					-	-						-	-									-	-					-	-			3,40
3,60					-	-						-	-									-	-					-	-			3,60
3,80					-	-						-	-									-	-					-	-			3,80
4,00					-	-						-	-									-	-					-	-			4,00
4,40					-	-						-	-									-	-					-	-			4,40
4,60					-	-						-	-									-	-					-	-			4,60
4,80					-	-						-	-									-	-					-	-			4,80
5,00					-	-						-	-									-	-					-	-			5,00
5,20					-	-						-	-									0,001	-	80				-	-			5,20
5,40					-	-						-	-									-	-					-	-			5,40
5,60					-	-						-	-									0,006	-	20				-	-			5,60
5,80					-	-						-	-									0,012	-	50				-	-			5,80
6,00					-	-						-	-									0,023	-	10				-	-			6,00
6,20					-	-						-	-									-	-					-	-			6,20
6,40				1,08	-	2						-	-									-	-					-	-			6,40
6,60				0,915	-	90						-	-									0,102	-	5				-	-			6,60
6,80					-	-						-	-									0,152	-	7				-	-			6,80
7,20				0,510	-	5						-	-									0,296	-	15				-	-			7,20
7,60					-	-						-	-									-	-					-	-			7,60
8,00				0,188	-	5						-	-									-	-					-	-			8,00
8,40					-	-						-	-									-	-					-	-			8,40
8,80					-	-						-	-									-	-					-	-			8,80
9,00					-	-						-	-									-	-					-	-			9,00
9,20					-	-						-	-									-	-					-	-			9,20
9,40					-	-						-	-									-	-					-	-			9,40
9,60					-	-						-	-									-	-					-	-			9,60
9,80					-	-						-	-									-	-					-	-			9,80
10,00					-	-						-	-									-	-					-	-			10,00
20,00					-	539						-	-									12,60	-	539				-	-			20,00
Totals:						0	1,180						0	0		0	1,600					0	1,265				0	0		0	0	
Nominal Transactions Value:							0,00						0,00		0,00								0,00				0,00		0,00			
Number of Trades:							0						0		0								0,00				0		0			

OTE (CR)

(Contract Size: 100 Stocks, Exercise Style: American, Physical Delivery)

Exercise Price	Call Options														Put Options														Exercise Price									
	March 2013					June 2013					Other Months				March 2013					June 2013					Other Months													
	Open price	Price max	Price min	Last price	Closing price	Volume	Open Interest	Open price	Price max	Price min	Last price	Closing price	Volume	Open Interest	Volume	Open Interest	Open price	Price max	Price min	Last price	Closing price	Volume	Open Interest	Open price	Price max	Price min	Last price	Closing price		Volume	Open Interest	Volume	Open Interest					
0,800						-	-																										0,800					
0,900						-	-																										0,900					
1,00						-	-																										1,00					
1,10						-	-																										1,10					
1,20						-	-																										1,20					
1,30						-	-																										1,30					
1,40						-	-																										1,40					
1,50						-	-																										1,50					
1,60						-	-																										1,60					
1,70						-	-																										1,70					
1,80						-	-																										1,80					
1,90						-	-																										1,90					
2,00						-	-																										2,00					
2,20						-	-																										2,20					
2,40						-	-																										2,40					
2,50						-	-																										2,50					
2,60						-	-																										2,60					
2,70						-	-																										2,70					
2,80						-	-																										2,80					
2,90						-	-																										2,90					
3,00						-	-																										3,00					
3,10						-	-																										3,10					
3,20						-	-																										3,20					
3,30						-	-																										3,30					
3,40						-	-																										3,40					
3,60						-	-																										3,60					
3,70						-	-																										3,70					
3,80						-	-																										3,80					
3,90						-	-																										3,90					
4,00						-	-																										4,00					
4,20						-	-																										4,20					
4,40						-	-																										4,40					
4,60						-	-																										4,60					
4,80						-	-																										4,80					
5,00						-	-																										5,00					
5,20						-	-																										5,20					
5,60						-	-																										5,60					
6,00						-	-																										6,00					
6,40						-	-																										6,40					
6,80						-	-																										6,80					
7,20						-	-																										7,20					
7,60						-	-																										7,60					
8,00						-	-																										8,00					
8,20						-	-																										8,20					
8,40						-	-																										8,40					
8,60						-	-																										8,60					
8,80						-	-																										8,80					
9,00						-	-																										9,00					
Totals:						0	0								0	0	0	1.600										0	235						0	0	0	0
Nominal Transactions Value:							0,00								0,00		0,00											0,00							0,00		0,00	
Number of Trades:							0								0		0											0,00							0		0	

PPC (CR)

(Contract Size: 100 Stocks, Exercise Style: American, Physical Delivery)

Exercise Price	Call Options														Put Options																			
	March 2013							June 2013							Other Months		March 2013							June 2013							Other Months		Exercise Price	
	Open price	Price max	Price min	Last price	Closing price	Volume	Open Interest	Open price	Price max	Price min	Last price	Closing price	Volume	Open Interest	Volume	Open Interest	Open price	Price max	Price min	Last price	Closing price	Volume	Open Interest	Open price	Price max	Price min	Last price	Closing price	Volume	Open Interest	Volume	Open Interest		
0,800						-	-							-	-																			
0,900						-	-							-	-																			0,900
1,00						-	-							-	-																			1,00
1,10						-	-							-	-																			1,10
1,20						-	-							-	-																			1,20
1,30						-	-							-	-																			1,30
1,40						-	-							-	-																			1,40
1,50						-	-							-	-																			1,50
1,60						-	-							-	-																			1,60
1,70						-	-							-	-																			1,70
1,80						-	-							-	-																			1,80
1,90						-	-							-	-																			1,90
2,00						-	-							-	-																			2,00
2,20						-	-							-	-																			2,20
2,40						-	-							-	-																			2,40
2,60						-	-							-	-																			2,60
2,80						-	-							-	-																			2,80
2,90						-	-							-	-																			2,90
3,00						-	-							-	-																			3,00
3,10						-	-							-	-																			3,10
3,20						-	-							-	-																			3,20
3,30						-	-							-	-																			3,30
3,40						-	-							-	-																			3,40
3,50						-	-							-	-																			3,50
3,60						-	-							-	-																			3,60
3,70						-	-							-	-																			3,70
3,80						-	-							-	-																			3,80
4,00						-	-							-	-																			4,00
4,20						-	-							-	-																			4,20
4,40						-	-							-	-																			4,40
4,60						-	-							-	-																			4,60
4,80						-	-							-	-																			4,80
5,00						-	-							-	-																			5,00
5,20						-	-							-	-																			5,20
5,40						-	-							-	-																			5,40
5,60						-	-							-	-																			5,60
5,80						-	-							-	-																			5,80
6,00						-	-							-	-																			6,00
6,40						-	-							-	-																			6,40
6,80						-	-							-	-																			6,80
7,20						-	-							-	-																			7,20
7,60						-	-							-	-																			7,60
8,00						-	-							-	-																			8,00
8,20						-	-							-	-																			8,20
8,40						-	-							-	-																			8,40
8,60						-	-							-	-																			8,60
8,80						-	-							-	-																			8,80
9,00						-	-							-	-																			9,00
9,20						-	-							-	-																			9,20
9,60						-	-							-	-																			9,60
10,00						-	-							-	-																			10,00



PPC (CR)

(Contract Size: 100 Stocks, Exercise Style: American, Physical Delivery)

Exercise Price	Call Options														Put Options																	
	March 2013				June 2013				Other Months		March 2013				June 2013				Other Months		Exercise Price											
	Open price	Price max	Price min	Last price	Closing price	Volume	Open Interest	Open price	Price max	Price min	Last price	Closing price	Volume	Open Interest	Volume	Open Interest	Open price	Price max	Price min	Last price		Closing price	Volume	Open Interest	Volume	Open Interest						
Totals:						0	170						0	0	0	0							0	210						0	0	0
Nominal Transactions Value:							0,00						0,00	0,00	0,00	0,00						0,00	0,00						0,00	0,00	0,00	0,00
Number of Trades:							0						0	0	0	0						0,00	0,00						0	0	0	0

Stocks	Type[4]	Stock Repo [1]					Stock Reverse Repo [2]					Repurchase Agreements [3]											
		Trans. price	chg.	Trades	Volume	Transactions Value	Open Interest[5]	Price max	Price min	Last price	Last Ask	Trades	Volume	Transactions Value	Open Interest[5]	Price max	Price min	Last price	Last Ask	Trades	Volume	Transactions Value	Open Interest[5]
AEGEAN AIRLINES (CR)	SR RA	100,00	---	---	---	---	105	---	---	---	52@4,5%	---	---	---	---	---	---	---	---	---	---	---	---
ALPHA BANK (CR)	SR RA	100,04	---	---	---	---	61.387	4,50%	4,50%	4,50%	24778@4,5%	2	2.170	258.230,0	8.370	---	---	---	---	---	---	---	1.445
ALPHA ETF FTSE Athex Large Cap	SR RA	100,00	---	---	---	---	---	---	---	---	---	---	---	---	---	---	---	---	---	---	---	---	2.664
ALUMIL (CR)	RA	---	---	---	---	---	---	---	---	---	---	---	---	---	---	---	---	---	---	---	---	---	---
ATHENS MEDICAL CENTER SA (CR)	SR RA	100,00	---	---	---	---	434	---	---	---	217@4,5%	---	---	---	---	---	---	---	---	---	---	---	---
AUTOHELLAS SA (CR)	SR RA	100,00	---	---	---	---	14	---	---	---	4@4,5%	---	---	---	---	---	---	---	---	---	---	---	---
BANK OF CYPRUS (CR)	SR RA	100,01	---	---	---	---	10.416	---	---	---	6687@7,2%	---	---	---	1.000	---	---	---	---	---	---	---	1.745
COCA - COLA HBC (CR)	SR RA	100,01	---	---	---	---	2.383	---	---	---	1191@4,5%	---	---	---	---	---	---	---	---	---	---	---	225
CRETE PLASTICS SA (CR)	SR RA	100,00	---	---	---	---	---	---	---	---	---	---	---	---	---	---	---	---	---	---	---	---	---
CYPRUS POPULAR BANK (CR)	SR RA	100,00	---	---	---	---	13.560	---	---	---	10210@10%	---	---	---	350	---	---	---	---	---	---	---	---
DAIOS PLASTICS SA (CR)	SR RA	100,00	---	---	---	---	---	---	---	---	---	---	---	---	---	---	---	---	---	---	---	---	---
ELLAKTOR (CR)	SR RA	100,01	---	---	---	---	3.399	---	---	---	1699@4,5%	---	---	---	---	---	---	---	---	---	---	---	35
ELTRAK SA (CR)	SR RA	100,00	---	---	---	---	23	---	---	---	11@4,5%	---	---	---	---	---	---	---	---	---	---	---	---
ELVAL SA. (CB)	SR RA	100,00	---	---	---	---	733	---	---	---	366@4,5%	---	---	---	---	---	---	---	---	---	---	---	---
EUROBANK ERGASIAS (CR)	SR RA	100,27	0,01	---	---	---	3.004	---	---	---	---	---	---	---	2.028	---	---	---	---	---	---	---	202
EUROBANK PROPERTIES REIC (CR)	SR RA	100,00	---	---	---	---	2.370	---	---	---	1185@4,5%	---	---	---	---	---	---	---	---	---	---	---	---
EURODRIP SA (CR)	SR RA	100,00	---	---	---	---	---	---	---	---	---	---	---	---	---	---	---	---	---	---	---	---	---
EYDAP S.A. (CR)	SR RA	100,01	---	---	---	---	325	---	---	---	125@4,5%	---	---	---	---	---	---	---	---	---	---	---	---
FOURLIS (CR)	SR RA	100,00	---	---	---	---	195	---	---	---	97@4,5%	---	---	---	---	---	---	---	---	---	---	---	---
FRIGOGLOSS SA (CR)	SR RA	100,00	---	---	---	---	253	---	---	---	126@4,5%	---	---	---	---	---	---	---	---	---	---	---	---
GEK TERNA (CR)	SR RA	100,00	---	---	---	---	717	---	---	---	358@4,5%	---	---	---	---	---	---	---	---	---	---	---	---
GR. SARANTIS SA (CR)	SR RA	100,00	---	---	---	---	62	---	---	---	31@4,5%	---	---	---	---	---	---	---	---	---	---	---	---
HALKOR SA (CB)	SR RA	100,00	---	---	---	---	355	---	---	---	177@4,5%	---	---	---	---	---	---	---	---	---	---	---	---
HELL. DUTY FREE SHOPS SA (CR)	SR RA	100,02	---	---	---	---	680	---	---	---	340@4,5%	---	---	---	---	---	---	---	---	---	---	---	7
HELLENIC CABLES SA (CR)	SR RA	100,00	---	---	---	---	15	---	---	---	---	---	---	---	---	---	---	---	---	---	---	---	---
HELLENIC EXCHANGES (CR)	SR RA	100,01	---	---	---	---	6.052	---	---	---	2960@4,5%	---	---	---	66	---	---	---	---	---	---	---	---
HELLENIC PETROLEUM (CR)	SR RA	100,15	---	---	---	---	2.374	---	---	---	987@4,5%	---	---	---	200	---	---	---	---	---	---	---	48
HYGEIA SA (CR)	SR RA	100,00	---	---	---	---	500	---	---	---	250@4,5%	---	---	---	---	---	---	---	---	---	---	---	---
IASO SA (CR)	SR RA	100,00	---	---	---	---	85	---	---	---	42@4,5%	---	---	---	---	---	---	---	---	---	---	---	---
IKTINOS HELLAS SA (CR)	SR RA	100,00	---	---	---	---	10	---	---	---	---	---	---	---	---	---	---	---	---	---	---	---	---
INFORM P. LYKOS SA (CR)	SR RA	100,00	---	---	---	---	200	---	---	---	100@4,5%	---	---	---	---	---	---	---	---	---	---	---	---
INTRACOM CONSTR. (CR)	SR RA	100,00	---	---	---	---	---	---	---	---	---	---	---	---	---	---	---	---	---	---	---	---	---
INTRACOM HOLDINGS (CR)	SR RA	100,00	---	---	---	---	665	---	---	---	332@4,5%	---	---	---	---	---	---	---	---	---	---	---	---
INTRALOT (CR)	SR RA	100,00	---	---	---	---	5.933	---	---	---	2966@4,5%	---	---	---	---	---	---	---	---	---	---	---	---
J & P - AVAX SA (CR)	SR RA	100,03	---	---	---	---	232	---	---	---	116@4,5%	---	---	---	---	---	---	---	---	---	---	---	---
JUMBO SA (CR)	SR RA	100,01	---	---	---	---	2.444	---	---	---	1192@4,5%	---	---	---	30	---	---	---	---	---	---	---	45
KORRES (CR)	SR RA	100,00	---	---	---	---	---	---	---	---	---	---	---	---	---	---	---	---	---	---	---	---	---

## Stock Lending Notes

[1] - Stock Repo: A Contract for selling stocks to HELEX with a Repurchase Right (According to ATHEX BoD Resolution No 17)

[2] - Stock Reverse Repo: A Contract for buying stocks from HELEX with a Resell Right. (According to ATHEX BoD Resolution No 18)

[3] - Standardized Repurchase Agreements: A Contract that constitutes a standardized agreement for the purchase or sale of shares, with repurchase or resell pact (According to ATHEX BoD Resolution No 20)

[4] - Type of products is divided into SR: Stock Repo or Stock Reverse Repo, and RA: Repurchase Agreements.

[5] - Open Interest in all Series (both tradeable or non-tradeable).

Stocks	Type[4]	Stock Repo [1]						Stock Reverse Repo [2]						Repurchase Agreements [3]									
		Trans. price	chg.	Trades	Volume	Transactions Value	Open Interest[5]	Price max	Price min	Last price	Last Ask	Trades	Volume	Transactions Value	Open Interest[5]	Price max	Price min	Last price	Last Ask	Trades	Volume	Transactions Value	Open Interest[5]
KRI-KRI S.A. (CR)	SR RA	100,00	---	---	---	---	550	---	---	---	275@4,5%	---	---	---	---	---	---	---	---	---	---	---	---
LAMDA DEVELOPMENT SA (CR)	SR RA	100,00	---	---	---	---	2.075	---	---	---	1104@4,5%	---	---	---	---	---	---	---	---	---	---	---	---
MARFIN INVESTMENT GROUP (CR)	SR RA	100,00	---	---	---	---	22.870	---	---	---	11435@4,5%	---	---	---	---	---	---	---	---	---	---	---	1.445
METKA (CR)	SR RA	100,28	0,02	---	---	---	665	---	---	---	271@4,5%	---	---	61	---	---	---	---	---	---	---	---	11
MLS MULTIMEDIA SA (CR)	SR RA	100,00	---	---	---	---	119	---	---	---	59@4,5%	---	---	---	---	---	---	---	---	---	---	---	---
MOTOR OIL (CR)	SR RA	100,02	---	---	---	---	2.916	---	---	---	1398@4,5%	---	---	60	---	---	---	---	---	---	---	---	27
MYTILINEOS HOLDINGS (CR)	SR RA	100,03	---	---	---	---	4.180	---	---	---	2090@4,5%	---	---	---	---	---	---	---	---	---	---	---	64
NATIONAL BANK (CR)	SR RA	100,39	0,02	---	---	---	48.293	---	---	---	---	---	43.268	10,00%	0,01%	10,00%	---	2	1.315	134.130,0	31.146	---	
NBGAM ETF	SR RA	100,00	---	---	---	---	---	---	---	---	---	---	---	---	---	---	---	---	---	---	---	---	---
NBGAM ETF GREECE & TURKEY 30	SR RA	100,00	---	---	---	---	---	---	---	---	---	---	---	---	---	---	---	---	---	---	---	---	55
NIREFS SA (CR)	SR RA	100,00	---	---	---	---	354	---	---	---	177@4,5%	---	---	---	---	---	---	---	---	---	---	---	---
OPAP (CR)	SR RA	100,06	0,01	---	---	---	5.167	---	---	---	2383@4,5%	---	---	200	---	---	---	---	---	---	---	---	362
OTE (CR)	SR RA	100,00	---	---	---	---	6.958	---	---	---	3385@4,5%	---	---	94	---	---	---	---	---	---	---	---	975
P.P.A. S.A. (CR)	SR RA	100,00	---	---	---	---	7	---	---	---	3@4,5%	---	---	---	---	---	---	---	---	---	---	---	---
PETROPOULOS PETROS (CR)	RA	---	---	---	---	---	---	---	---	---	---	---	---	---	---	---	---	---	---	---	---	---	---
PIRAEUS BANK (CR)	SR RA	100,02	0,01	---	---	---	22.068	---	---	---	13433@6,5%	---	---	2.389	---	---	---	---	---	---	---	---	1.873
PPC (CR)	SR RA	100,26	0,02	---	---	---	2.937	---	---	---	718@4,5%	---	---	750	---	---	---	---	---	---	---	---	181
QUEST HOLDINGS (CR)	SR RA	100,00	---	---	---	---	39	---	---	---	19@4,5%	---	---	---	---	---	---	---	---	---	---	---	---
S & B IND. MINERALS (CR)	SR RA	100,00	---	---	---	---	114	---	---	---	57@4,5%	---	---	---	---	---	---	---	---	---	---	---	---
SELECTED TEXT. IND. ASSOC (CR)	SR RA	100,00	---	---	---	---	50	---	---	---	25@4,5%	---	---	---	---	---	---	---	---	---	---	---	---
SIDENOR (CR)	SR RA	100,00	---	---	---	---	1.556	---	---	---	922@4,5%	---	---	---	---	---	---	---	---	---	---	---	---
TECHNICAL OLYMPIC SA (CR)	SR RA	100,00	---	---	---	---	14	---	---	---	4@4,5%	---	---	---	---	---	---	---	---	---	---	---	---
TERNA ENERGY (CR)	SR RA	100,05	---	---	---	---	210	---	---	---	105@4,5%	---	---	---	---	---	---	---	---	---	---	---	---
THESSALONIKA WATER & SEWERAGE	SR RA	100,00	---	---	---	---	1.208	---	---	---	604@4,5%	---	---	---	---	---	---	---	---	---	---	---	---
THRACE PLASTICS SA (CR)	SR RA	100,00	---	---	---	---	100	---	---	---	75@4,5%	---	---	---	---	---	---	---	---	---	---	---	---
TITAN CEMENT (CR)	SR RA	100,01	---	---	---	---	9.834	---	---	---	4866@4,5%	---	---	51	---	---	---	---	---	---	---	---	30
TPA SA (CR)	SR RA	100,00	---	---	---	---	6	---	---	---	3@4,5%	---	---	---	---	---	---	---	---	---	---	---	---
TRASTOR REAL EST. INV. CO.(CR)	SR RA	100,00	---	---	---	---	44	---	---	---	22@4,5%	---	---	---	---	---	---	---	---	---	---	---	---
VIOHALCO (CB)	SR RA	100,02	0,01	---	---	---	4.171	---	---	---	2035@4,5%	---	---	50	---	---	---	---	---	---	---	---	115

## Stock Lending Notes

[1] - Stock Repo: A Contract for selling stocks to HELEX with a Repurchase Right (According to ATHEX BoD Resolution No 17)

[2] - Stock Reverse Repo: A Contract for buying stocks from HELEX with a Resell Right. (According to ATHEX BoD Resolution No 18)

[3] - Standardized Repurchase Agreements: A Contract that constitutes a standardized agreement for the purchase or sale of shares, with repurchase or resell pact (According to ATHEX BoD Resolution No 20)

[4] - Type of products is divided into SR: Stock Repo or Stock Reverse Repo, and RA: Repurchase Agreements.

[5] - Open Interest in all Series (both tradeable or non-tradeable).

## Sectors codification for listed companies

533	-	Exploration & Production	537	-	Integrated Oil & Gas
1353	-	Commodity Chemicals	1357	-	Specialty Chemicals
1753	-	Aluminum	1755	-	Nonferrous Metals
1757	-	Steel	1775	-	General Mining
2353	-	Building Materials & Fixtures	2357	-	Heavy Construction
2723	-	Containers & Packaging	2727	-	Diversified Industrials
2733	-	Electrical Components & Equipment	2753	-	Commercial Vehicles & Trucks
2757	-	Industrial Machinery	2773	-	Marine Transportation
2777	-	Transportation Services	2791	-	Business Support Services
2797	-	Industrial Suppliers	3535	-	Distillers & Vintners
3537	-	Soft Drinks	3573	-	Farming & Fishing
3577	-	Food Products	3722	-	Durable Household Products
3726	-	Furnishings	3728	-	Home Construction
3747	-	Toys	3763	-	Clothing & Accessories
3765	-	Footwear	3767	-	Personal Products
3785	-	Tobacco	4533	-	Health Care Providers
4535	-	Medical Equipment	4577	-	Pharmaceuticals
5337	-	Food Retailers & Wholesalers	5371	-	Apparel Retailers
5373	-	Broadline Retailers	5375	-	Home Improvement Retailers
5379	-	Specialty Retailers	5553	-	Broadcasting & Entertainment
5555	-	Media Agencies	5557	-	Publishing
5751	-	Airlines	5752	-	Gambling
5753	-	Hotels	5755	-	Recreational Services
5757	-	Restaurants & Bars	5759	-	Travel & Tourism
6535	-	Fixed Line Telecommunications	6575	-	Mobile Telecommunications
7535	-	Conventional Electricity	7537	-	Alternative Electricity
7577	-	Water	8355	-	Banks
8534	-	Insurance Brokers	8536	-	Property & Casualty Insurance
8633	-	Real Estate Holding & Development	8637	-	Real Estate Services
8671	-	Industrial & Office REITs	8675	-	Specialty REITs
8775	-	Specialty Finance	8777	-	Investment Services
8985	-	Equity Investment Instruments	9533	-	Computer Services
9535	-	Internet	9537	-	Software
9572	-	Computer Hardware	9574	-	Electronic Office Equipment
9578	-	Telecommunications Equipment	11000	-	ETF

