


Daily Official List

Hellenic Exchanges – Athens Stock Exchange S.A.

Thursday, 9 April, 2015
Year: 136 Trading Day No: 65



δελτιο ημερησιων
συναλλαγων
daily official list

Disclaimer:

Hellenic Exchanges-Athens Exchange endeavours to ensure that the data and other material ("Information") presented on the Daily Official List are accurate and complete, but it is not liable for any errors or omissions of data or /and for the accuracy, credibility, updating and completeness of the aforesaid information nor it has any liability arising directly or indirectly from the use of the above Information.

The Company is not liable for the accuracy of the data included in listed companies' announcements. Only the sender of such an announcement is fully and solely liable for any infringement of third party's rights from the content of such announcement. All contents of the Daily Official List are provided only for information purposes and do not constitute investment advice or solicitation to invest in securities or other products listed for trading on the Exchange.

You acknowledge and agree that the Company is the owner of any property rights related to any Information appearing on the Daily Official List including intellectual property rights copyright, trademarks, etc.

The above data are a property of the Hellenic Exchanges-Athens Exchange and are copyright protected. Users are forbidden to reproduce, modify, copy, sale, transmit or redistribute, by all reproduction means and methods, part or the whole of the above data, without reference to their source.

The commercial exploitation of these data is, also, forbidden by third parties. Hellenic Exchanges-Athens Exchange does not carry any responsibility, direct or indirect, derived from usage or accidental alteration of the above data when used by third parties.

Hellenic Exchanges – Athens Stock Exchange S.A.

110 Athinon Ave., 10442 Athens, Tel: (210) 33.66.800, Fax: (210) 32.13.938

www.athex.gr

Thessalonica Stock Exchange Center (T.S.E.C)

16-18 Katouni Str., Thessalonica 546 25 Tel: (2310) 567.667, Fax: (2310) 530.545

Athex Members Guarantee Fund

14-16 Fidiou Str., Athens 106 78, Tel: (210) 33.04.682, Fax: (210) 33.04.155

Hellenic Republic Capital Market Commission

1 Kolokotroni Str. & 1 Stadiou Str., Athens 10562 Tel: (210) 33.77.100 Fax: (210) 33.77.173

Table of Contents

Section 1: Statistical Figures of Securities, Derivatives and Lending

Summary of Markets

Athex Indices

Analytic Figures for Athex Market's Boards and Categories

Trading Details by Athex Sectors and Financial Instruments (ETFs)

Top 10 best & worst performing Shares

Derivatives Summary

Section 2: Analytic Figures of Shares Transactions

Analytic Figures of Shares Transactions

Shares' Notes

Section 3: Figures of Securities Transactions

Securities Blocks Details

Shares Rights Details

Shares Short Selling

Stock Borrowing

Shares Forced Sales

Forced Sales Registered Shares

Exchange Traded Funds (ETFs) Characteristics

Section 5: Bonds traded in Fixed Income Assets Market

Corporate Bonds

Government Bonds

Treasury Bills & Zero Coupon Government Bonds

Government Bonds Traded with the Open Outcry Method

State Banks Bonds

Section 6: Additional Infos

Athex & ATHEXClear Members List

List of Stocks under Market Making operations

Section 7: Derivatives Market Analytic Figures

Index Futures

Stock Futures

Index Options

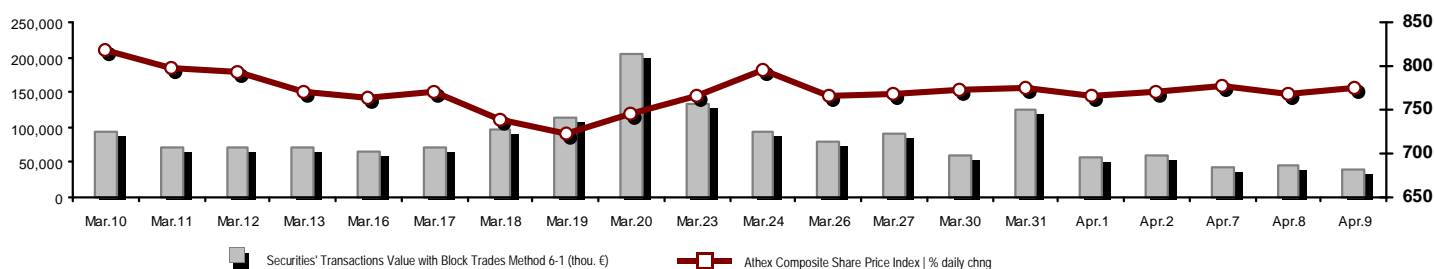
Stock Options

Stock Lending Analytic Figures

Appendix A: Sectors codification for listed companies

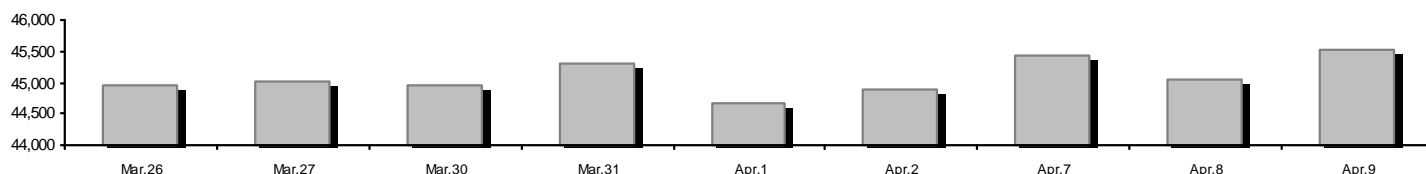
Summary of Markets

Athex Composite Share Price Index vs Shares and Derivatives Transactions Value

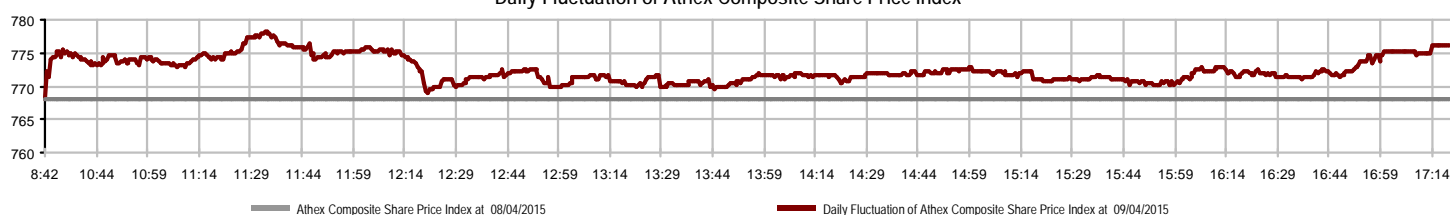


Athex Capitalisation (mill. €) **:	45,511.16	Derivatives Total Open Interest	590,445
Daily change: mill. € %	478.44 1.06%	in Index Futures % daily chng	39,497 -0.52%
Yearly Avg Capitalisation: mill. € % chng prev year Avg	48,384.58 -30.14%	in Stock Futures % daily chng	547,181 0.17%
Athex Composite Share Price Index % daily chng	776.03 1.06%	in Index Options % daily chng	3,307 1.13%
Athex Composite Share Price Index Capitalisation (mill. €)	40,278.51	in Stock Options % daily chng	460 0.00%
Daily change (mill. €)	469.07		
Securities' Transactions Value with Block Trades Method 6-1 (38,851.36	Derivatives Contracts Volume:	16,921
Daily change: thou. € %	-7,148.94 -15.54%	Daily change: pieces %	-5,783 -25.47%
YtD Avg Trans. Value: thou. € % chng prev year Avg	110,777.79 -12.81%	YtD Avg Derivatives Contracts % chng prev year Avg	78,206 42.68%
Blocks Transactions Value of Method 6-1 (thou. €)	792.84	Derivatives Trades Number:	1,114
Blocks Transactions Value of Method 6-2 & 6-3 (thou. €)	56.54	Daily change: number %	-235 -17.42%
Bonds Transactions Value (thou. €)	0.00	YtD Avg Derivatives Trades number % chng prev year Avg	4,583 9.74%
Securities' Transactions Volume (thou. Pieces)	72,360.48	Lending Total Open Interest	1,409,370
Daily change: thou. pieces %	8,133.85 12.66%	Daily change: pieces %	56,248 4.16%
YtD Avg Volume: thou. pieces % chng prev year Avg	200,437.59 110.97%	Lending Volume (Multilateral/Bilateral)	63,229
Blocks Transactions Volume of Method 6-1 (thou. Pieces)	223.56	Daily change: pieces %	52,179 472.21%
Blocks Transactions Volume of Method 6-2 & 6-3 (thou. Pieces)	274.45	Multilateral Lending	60,348
Bonds Transactions Volume (thou. pieces)	0.00	Bilateral Lending	2,881
Securities' Trades Number	14,336	Lending Trades Number:	17
Daily change: number %	-247 -1.69%	Daily change: thou. € %	2 13.33%
YtD Avg Derivatives Trades number % chng prev year Avg	35,047 21.33%	Multilateral Lending Trades Number	16
Number of Blocks Method 6-1	2	Bilateral Lending Trades Number	1
Number of Blocks Method 6-2 & 6-3	1		
Number of Bonds Transactions	0		

Athex Capitalisation (mill. €) **



Daily Fluctuation of Athex Composite Share Price Index



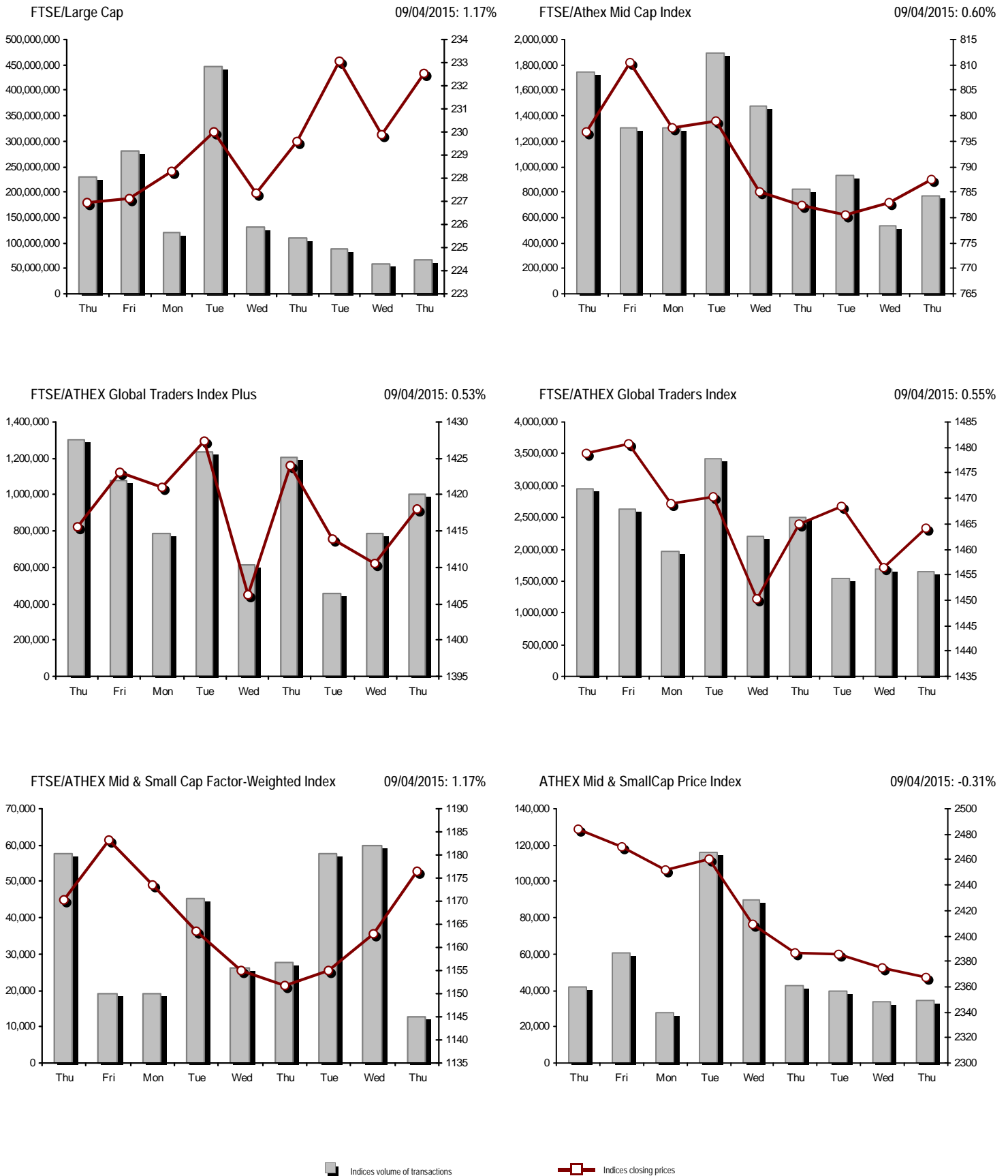
Athex Indices

Index name	09/04/2015	08/04/2015	pts.	%	Min	Max	Year min	Year max	Year change
Athex Composite Share Price Index	776.03 #	767.92	8.11	1.06%	767.92	778.07	708.61	945.81	-6.07% €
FTSE/Athex Large Cap	232.54 #	229.86	2.68	1.17%	229.86	233.31	209.48	283.37	-12.20% €
FTSE/ATHEX Custom Capped	786.35 €	798.30	-11.95	-1.50%			724.23	956.79	-9.75% €
FTSE/ATHEX Custom Capped - USD	608.40 €	621.59	-13.19	-2.12%			558.48	777.68	-19.51% €
FTSE/Athex Mid Cap Index	787.54 #	782.83	4.71	0.60%	782.83	789.54	717.54	984.77	1.88% #
FTSE/ATHEX-CSE Banking Index	429.83 #	419.35	10.48	2.50%	419.28	431.76	391.43	774.70	-40.96% €
FTSE/ATHEX Global Traders Index Plus	1,418.02 #	1,410.52	7.50	0.53%	1,400.88	1,425.80	1,227.52	1,604.84	10.53% #
FTSE/ATHEX Global Traders Index	1,464.22 #	1,456.26	7.96	0.55%	1,452.89	1,470.56	1,344.70	1,698.65	1.79% #
FTSE/ATHEX Mid & Small Cap Factor-Weighted Ind	1,176.59 #	1,162.94	13.65	1.17%	1,162.94	1,177.04	1,076.89	1,223.09	7.34% #
Greece & Turkey 30 Price Index	632.60 #	624.95	7.65	1.22%	624.20	632.98	595.05	768.95	-6.95% €
ATHEX Mid & SmallCap Price Index	2,367.09 €	2,374.53	-7.44	-0.31%	2,343.08	2,393.01	2,343.08	2,635.74	-2.98% €
FTSE/Athex Market Index	562.57 #	556.21	6.36	1.14%	556.21	564.32	507.68	685.04	-11.57% €
FTSE Med Index	5,901.31 €	5,935.81	-34.50	-0.58%			4,930.94	5,935.81	17.16% #
Athex Composite Index Total Return Index	1,137.43 #	1,125.55	11.88	1.06%	1,125.55	1,140.42	1,037.71	1,385.07	-5.82% €
FTSE/Athex Large Cap Total Return	316.57 #	312.92	3.65	1.17%			285.87	382.72	-11.90% €
FTSE/ATHEX Large Cap Net Total Return	942.23 #	931.35	10.88	1.17%	931.35	945.34	848.38	1,147.63	-11.95% €
FTSE/ATHEX Custom Capped Total Return	829.73 €	842.34	-12.61	-1.50%			763.44	1,008.59	-9.50% €
FTSE/ATHEX Custom Capped - USD Total Return	641.96 €	655.88	-13.92	-2.12%			589.29	819.78	-19.29% €
FTSE/Athex Mid Cap Total Return	1,001.33 #	995.35	5.98	0.60%			928.33	1,231.75	1.87% #
FTSE/ATHEX-CSE Banking Total Return Index	400.81 #	391.04	9.77	2.50%			368.97	708.30	-40.99% €
Greece & Turkey 30 Total Return Index	767.62 #	764.01	3.61	0.47%			722.97	919.96	-6.74% €
Hellenic Mid & Small Cap Index	781.56 #	777.66	3.90	0.50%	775.91	785.93	716.61	994.59	1.60% #
FTSE/Athex Banks	567.91 #	554.06	13.85	2.50%	553.97	570.46	517.18	1,023.60	-40.95% €
FTSE/Athex Insurance	1,359.23 #	1,306.55	52.68	4.03%	1,296.01	1,380.30	1,285.47	1,538.35	-7.19% €
FTSE/Athex Financial Services	977.57 #	949.32	28.25	2.98%	949.32	982.77	926.91	1,400.60	-2.40% €
FTSE/Athex Industrial Goods & Services	2,088.93 #	2,073.45	15.48	0.75%	2,073.45	2,104.50	1,881.51	2,660.41	6.90% #
FTSE/Athex Retail	3,697.15 €	3,760.86	-63.71	-1.69%	3,647.01	3,852.15	3,336.67	4,531.02	-2.76% €
FTSE/ATHEX Real Estate	2,217.59 €	2,247.10	-29.51	-1.31%	2,189.35	2,247.10	2,181.63	2,800.26	-2.82% €
FTSE/Athex Personal & Household Goods	4,522.75 #	4,520.33	2.42	0.05%	4,503.98	4,598.44	3,847.16	5,680.33	-0.65% €
FTSE/Athex Food & Beverage	6,967.22 #	6,797.02	170.20	2.50%	6,797.02	6,996.99	5,066.70	6,996.99	18.94% #
FTSE/Athex Basic Resources	2,432.55 #	2,367.66	64.89	2.74%	2,367.66	2,432.55	1,753.11	2,916.96	26.16% #
FTSE/Athex Construction & Materials	2,273.86 #	2,255.39	18.47	0.82%	2,217.23	2,280.95	2,059.46	2,705.46	4.07% #
FTSE/Athex Oil & Gas	1,811.72 #	1,787.61	24.11	1.35%	1,773.32	1,812.36	1,618.74	2,208.30	-0.17% €
FTSE/Athex Chemicals	6,738.91 ~	6,738.91	0.00	0.00%	6,700.43	6,738.91	4,784.62	7,336.99	31.55% #
FTSE/Athex Media	1,920.67 ~	1,920.67	0.00	0.00%	1,920.67	1,920.67	1,359.24	2,061.03	-6.81% €
FTSE/Athex Travel & Leisure	1,540.01 €	1,543.01	-3.00	-0.19%	1,532.06	1,567.25	1,238.26	1,741.96	0.45% #
FTSE/Athex Technology	706.19 €	706.72	-0.53	-0.07%	694.52	709.50	659.36	786.22	-2.74% €
FTSE/Athex Telecommunications	2,279.13 €	2,295.64	-16.51	-0.72%	2,279.13	2,309.41	1,995.61	2,606.68	-9.01% €
FTSE/Athex Utilities	2,016.88 #	1,996.73	20.15	1.01%	1,991.29	2,035.47	1,711.47	2,830.02	-3.89% €
FTSE/Athex Health Care	118.17 #	115.00	3.17	2.76%	114.20	119.75	111.03	163.37	-18.13% €
Athex All Share Index	159.80 #	158.11	1.69	1.07%			146.74	196.00	-14.06% €
Hellenic Corporate Bond Index	88.09 #	88.02	0.07	0.08%			87.18	94.45	-6.16% €
Hellenic Corporate Bond Price Index	85.23 #	85.17	0.06	0.07%			85.00	92.77	-7.87% €

Note 1: Greece & Turkey 30 Pr data is the indicative at 17:20, whereas FTSE/ATHEX Custom Capped, FTSE/ATHEX Custom Capped - USD, FTSE/ATHEX Custom Capped TR, FTSE/ATHEX Custom Capped - USD TR, FTSE/Med 100 & Greece & Turkey 30 Rt., Hellenic Corporate Bond Price Index, Hellenic Corporate Bond Index closing prices refer to the previous trading day of 07/04/2015.

Note 2: The Hellenic Mid & Small Cap Index is a Customized index calculated by the Athens Exchange.

Athex Indices



Analytic Figures for Athex Market's Boards and Categories

	Total Traded Securities	Main Market	Low Dispersion	Other Categories (*)	Exchange Traded Funds (ETFs)	Warrants
Totals	121	98	3	17	0	3
Gain / Lose / Same:	62 / 38 / 21	55 / 29 / 14	1 / 0 / 2	5 / 8 / 4	0 / 0 / 0	1 / 1 / 1
Athex Capitalisation (mill. €) **	45,511.16	43,687.11	1,487.17	336.88		
Daily Average Trans/ons Value(thou.€)	110,777.79	108,315.91	60.29	130.41	45.39	2,413.60
Transactions Value	38,907.90	38,781.21	13.28	6.07	0.00	107.34
Main Board:	38,058.52	37,931.84	13.28	6.07	0.00	107.34
Blocks Board 6_2_3:	849.38	849.38	0.00	0.00	0.00	0.00
Forced Sales Board:	0.00	0.00	0.00	0.00	0.00	0.00
Special Terms Board:	0.00	0.00	0.00	0.00	0.00	0.00
Daily Average Transactions Volume	200,437,593	192,843,727	76,061	344,714	13,532	7,419,836
Transactions Volume	72,634,933	71,588,655	8,616	114,373	0	923,289
Main Board:	72,136,921	71,090,643	8,616	114,373	0	923,289
Blocks Board 6_2_3:	498,012	498,012	0	0	0	0
Forced Sales Board:	0	0	0	0	0	0
Special Terms Board:	0	0	0	0	0	0
Daily Average Number of Trades	35,047	33,209	35	84	7	1,713
Number of Trades	14,337	13,957	12	90	0	278
Main Board:	14,334	13,954	12	90	0	278
Blocks Board 6_2_3:	3	3	0	0	0	0
Forced Sales Board:	0	0	0	0	0	0
Special Terms Board:	0	0	0	0	0	0

(*) Summarised Transactions figures for Under Deletion and Under Supervision Categories. (**) The Market Capitalization of the Companies that belong in the Under Supervision Status is not included.

Trading Details by Athex Sectors and Financial Instruments (ETFs)

Code	Sectors	Gain / Lose / Same	Number of Trades	Transactions Volume	Transactions Value	% of Total Trans. Value
8300	- Banks	5 / 1 / 4	5,756	68,781,417	17,189,529.82	44.18%
1700	- Basic Resources	4 / 3 / 2	400	102,210	400,135.50	1.03%
1300	- Chemicals	1 / 1 / 2	32	10,274	13,592.33	0.03%
2300	- Construction & Materials	12 / 4 / 0	497	252,016	750,913.34	1.93%
12000	- Financial Instruments	0 / 0 / 0	---	---	---	---
8700	- Financial Services	1 / 1 / 0	440	422,847	416,852.84	1.07%
3500	- Food & Beverage	5 / 2 / 1	156	70,508	582,412.83	1.50%
4500	- Health Care	1 / 2 / 0	25	10,868	4,344.76	0.01%
2700	- Industrial Goods & Services	7 / 6 / 2	560	503,823	1,350,380.09	3.47%
8500	- Insurance	1 / 0 / 0	11	1,081	1,382.23	0.00%
5500	- Media	0 / 0 / 0	---	---	---	---
500	- Oil & Gas	2 / 0 / 0	491	308,423	1,921,333.15	4.94%
3700	- Personal & Household Goods	2 / 7 / 4	524	205,150	1,509,063.56	3.88%
8600	- Real Estate	4 / 1 / 0	691	171,826	1,036,892.52	2.66%
5300	- Retail	3 / 2 / 0	829	82,955	1,845,008.01	4.74%
9500	- Technology	3 / 4 / 4	196	94,815	88,096.58	0.23%
6500	- Telecommunications	0 / 1 / 0	735	349,291	2,908,691.27	7.48%
5700	- Travel & Leisure	8 / 1 / 2	2,015	952,475	7,532,624.60	19.36%
7500	- Utilities	3 / 2 / 0	979	314,954	1,356,643.75	3.49%

Top 10 best & worst performing Shares

Main Market

With positive Price change	Closing price	change	With negative Price change	Closing price	change
CENTRIC HOLDINGS (CR)	0.172	6.83% #	GRIVALIA PROPERTIES (CR)	7.24	-2.16% €
PIRAEUS BANK (CR)	0.337	4.33% #	FOLLI FOLLIE (CR)	25.65	-1.72% €
TERNA ENERGY (CR)	2.26	4.15% #	MARFIN INVESTMENT GROUP (CR)	0.134	-1.47% €
HELLENIC EXCHANGES-A.S.E. (CR)	4.95	3.99% #	EYDAP S.A. (CR)	4.96	-0.80% €
EUROBANK ERGASIAS (CR)	0.111	3.74% #	OTE (CR)	8.28	-0.72% €
MYTILINEOS HOLDINGS (CR)	5.93	3.13% #	OPAP (CR)	8.60	-0.46% €
CC HBC AG (CR)	18.69	2.52% #	THESSALONIKA WATER & SEWERAGE	2.55	-0.39% €
ELLAKTOR (CR)	1.69	2.42% #	FOURLIS (CR)	2.68	-0.37% €
SIDENOR (CR)	0.543	2.26% #	VIOHALCO SA/NV (CB)	2.77	-0.36% €
GEK TERNA (CR)	1.64	1.86% #	PLAISIO COMPUTERS SA (CR)	5.79	-0.17% €
With the highest Transactions Value	Value (thou. €)	change	With the highest Transactions Volume	Volume	change
OPAP (CR)	7,285.63	-0.46% €	EUROBANK ERGASIAS (CR)	39,097,411	3.74% #
NATIONAL BANK (CR)	6,114.57	1.79% #	ALPHA BANK (CR)	10,153,071	1.51% #
EUROBANK ERGASIAS (CR)	4,305.40	3.74% #	PIRAEUS BANK (CR)	10,039,810	4.33% #
PIRAEUS BANK (CR)	3,335.70	4.33% #	NATIONAL BANK (CR)	5,444,908	1.79% #
OTE (CR)	2,908.69	-0.72% €	BANK OF CYPRUS (CR)	2,891,616	0.00% -
ALPHA BANK (CR)	2,719.25	1.51% #	OPAP (CR)	844,082	-0.46% €
FOLLI FOLLIE (CR)	1,842.12	-1.72% €	FRIGOGLASS SA (CR)	384,554	0.00% -
MOTOR OIL (CR)	1,745.74	1.51% #	OTE (CR)	349,291	-0.72% €
JUMBO SA (CR)	1,477.91	0.12% #	MARFIN INVESTMENT GROUP (CR)	347,018	-1.47% €
PPC (CR)	975.34	1.30% #	MOTOR OIL (CR)	259,111	1.51% #

Note: Stocks that are not included in the "Low Dispersion" and "Under Supervision" categories, and the transactions value is more than 10,000 €.

Derivatives Summary

	Number of Trades	Volume	Open Interest
Index Futures	213	2,033	39,497
FTSE/Athex Large Cap	213	2,033	39,497
Stock Futures	892	14,841	547,181
ALPHA BANK (CR)	103	2,218	85,421
CC HBC AG (CR)	18	38	137
CORINTH PIPEWORKS SA (CR)	2	6	517
ELLAKTOR (CR)	13	88	1,561
EUROBANK ERGASIAS (CR)	101	3,313	226,571
EYDAP S.A. (CR)	28	54	600
FOLLI FOLLIE (CR)	38	160	109
FRIGOGLASS SA (CR)	1	10	356
GEK TERNA (CR)	3	7	7,822
GRIVALIA PROPERTIES (CR)	6	10	138
HELLENIC EXCHANGES-A.S.E. (CR)	21	60	1,933
HELLENIC PETROLEUM (CR)	11	43	4,923
INTRALOT (CR)	1	7	347
JUMBO SA (CR)	18	54	320
MARFIN INVESTMENT GROUP (CR)	4	20	30,252
METKA (CR)	2	8	316
MOTOR OIL (CR)	10	25	204
MYTILINEOS HOLDINGS (CR)	20	47	3,997
NATIONAL BANK (CR)	218	5,155	42,589
OPAP (CR)	64	186	1,203
OTE (CR)	5	30	6,075
P.P.A. S.A. (CR)	10	31	502
PIRAEUS BANK (CR)	150	3,136	125,626
PPC (CR)	34	116	3,396
SIDENOR (CR)	0	0	576
TERNA ENERGY (CR)	1	1	1,320
TITAN CEMENT (CR)	10	18	204
VIOHALCO SA/NV (CB)	0	0	166
Index Options	9	47	3,307
FTSE/Athex Large Cap	9	47	3,307
Stock Options	0	0	460
ALPHA BANK (CR)	0	0	0
NATIONAL BANK (CR)	0	0	180
OPAP (CR)	0	0	0
OTE (CR)	0	0	0
PIRAEUS BANK (CR)	0	0	280
PPC (CR)	0	0	0
Total Derivatives Traded	1,114	16,921	590,445

Number of Outstanding Securities	Nominal Value	Dividends [1]			Date of Last Coupon		Note	Shares	Closing price	% change	Previous closing price/date	Open price	Price min	Price max	Last price	Avg price	Last Bid [7]	Last Ask [7]	P/E after	Year	Volume	Trades	Transactions Value[8]	Company Mkt Value (thou. €)	Year low	Year high	Sector[4]		
2012	2013	2014	Dividend [2]	Right																									
Warrants																													
1,141,747,967	---	---	---	---	11/06/2013	---	ALPHA BANK (W)	0.455	---	↘	0.455	08/04/2015	0.478	0.452	0.478	0.455	0.460	---	---	---	2014	58,324	67	26,845.98	3,434,877.10	0.290	0.979	8355	
245,748,459	---	---	---	---	27/06/2013	---	NATIONAL BANK (W)	0.182	-1.62	€	0.185	08/04/2015	0.187	0.178	0.187	0.182	0.185	---	---	---	2014	34,650	21	6,399.87	4,027,790.58	0.100	0.320	8355	
843,637,022	---	---	---	---	03/07/2013	---	PIRAEUS BANK (W)	0.091	4.60	#	0.087	08/04/2015	0.089	0.087	0.091	0.091	0.089	---	---	---	2014	830,315	190	74,090.60	2,056,367.16	0.083	0.252	8355	
Main Market																													
71,417,100	0.650	---	---	---	26/05/2010	27/06/2014	---	AEGEAN AIRLINES (CR)	7.55	0.13	#	7.54	08/04/2015	7.63	7.50	7.64	7.55	7.60	---	---	9.48	2014	27,656	202	210,042.34	539,199.11	6.40	8.08	5751
11,178,000	1.12	---	---	---	21/04/2010	15/12/2014	---	AEOLIAN INVESTMENT FUND (CR)	0.700	---	↘	0.700	08/04/2015	---	---	---	---	---	---	---	2014	---	---	---	7,824.60	0.595	0.769	8985	
12,769,059,858	0.300	---	---	---	07/04/2008	13/05/2013	---	ALPHA BANK (CR)	0.269	1.51	#	0.265	08/04/2015	0.265	0.264	0.272	0.269	0.268	---	---	---	2014	10,153,071	1,500	2,719,246.71	3,434,877.10	0.258	0.510	8355
22,016,250	0.370	---	---	---	15/07/2009	11/05/2000	---	ALUMIL (CR)	0.330	---	↘	0.330	08/04/2015	0.330	0.297	0.330	0.330	0.313	---	---	---	2014	278	15	87.00	7,265.36	0.218	0.348	1753
417,608	16.00	---	0.8	---	29/04/2014	05/03/2013	---	ANDROMEDA SA (CR)	18.00	---	↘	18.00	08/04/2015	---	---	---	---	---	---	---	2014	---	---	---	7,516.94	16.37	20.00	8985	
26,252,040	0.380	---	---	---	08/07/2010	10/02/2014	---	AS COMPANY SA (CR)	0.380	7.34	#	0.354	08/04/2015	0.380	0.380	0.380	0.380	0.380	---	---	5.34	2014	201	2	76.38	9,975.78	0.263	0.380	5379
86,735,980	0.310	---	---	---	06/07/2009	02/01/2002	---	ATHENS MEDICAL CENTER SA (CR)	0.784	---	↘	0.784	08/04/2015	---	---	---	---	---	---	---	---	2014	---	---	---	68,001.01	0.681	0.990	4533
1,045,794,145	0.300	---	---	---	04/06/2008	07/08/2014	---	ATTICA BANK S.A. (CR)	0.054	---	↘	0.054	08/04/2015	0.055	0.053	0.056	0.054	0.054	---	---	---	2014	229,946	56	12,464.28	56,472.88	0.040	0.084	8355
15,300,000	0.300	---	---	---	30/07/2009	13/12/1999	---	ATTICA PUBLICATIONS SA (CR)	1.40	---	↘	1.40	08/04/2015	---	---	---	---	---	---	---	50.50	2014	---	---	---	21,420.00	1.29	1.60	5557
45,457,464	0.700	---	---	---	01/07/2008	01/03/2010	---	AUDIO VISUAL ENTERPRISES (CR)	0.260	---	↘	0.260	08/04/2015	---	---	---	---	---	---	---	---	2014	---	---	---	11,818.94	0.184	0.277	5553
12,157,500	0.320	---	---	---	30/04/2012	22/11/2013	---	AUTOHELLAS SA (CR)	10.60	3.31	#	10.26	08/04/2015	10.25	10.25	10.60	10.60	10.27	---	---	12.80	2014	105	2	1,078.00	128,869.50	8.30	10.80	5759
8,922,944,533	0.100	---	---	---	31/05/2011	02/02/2015	4857	BANK OF CYPRUS (CR)	0.203	---	↘	0.203	08/04/2015	0.200	0.198	0.203	0.203	0.201	---	---	---	2014	2,891,616	337	582,037.64	1,811,357.74	0.165	0.219	8355
19,864,886	5.60	0.5376	0.672	0.672	05/03/2015	02/07/2008	---	BANK OF GREECE (CR)	9.36	---	↘	9.36	08/04/2015	9.36	9.25	9.40	9.36	9.35	---	---	---	---	1,366	23	12,772.73	185,935.33	8.88	12.17	8355
23,986,500	1.05	---	---	---	26/06/2009	15/03/2000	---	BIOKARPET S.A.(CR)	0.250	---	↘	0.250	08/04/2015	---	---	---	---	---	---	---	---	2014	---	---	---	5,996.63	0.170	0.260	3726
15,842,391	1.51	---	---	---	15/07/2009	12/05/2000	---	BITROS HOLDING SA (CR)	0.335	---	↘	0.335	08/04/2015	---	---	---	---	---	---	---	---	2014	---	---	---	5,307.20	0.144	0.383	1757
15,816,009	0.300	---	---	---	01/07/2009	17/07/2000	---	BYTE COMPUTER SA (CR)	0.381	3.53	#	0.368	08/04/2015	0.370	0.370	0.385	0.380	0.378	---	---	5.73	2014	790	6	298.50	6,025.90	0.345	0.445	9533
367,819,247	6.70	0.34	0.354	---	09/07/2014	29/04/2013	---	CC HBC AG (CR)	18.69	2.52	#	18.23	08/04/2015	18.40	18.39	18.77	18.69	18.61	---	---	---	---	31,078	87	578,341.37	6,874,541.73	13.55	18.77	3537
101,123,806	0.360	---	---	---	22/07/2010	28/06/2011	---	CENTRIC HOLDINGS (CR)	0.172	6.83	#	0.161	08/04/2015	0.173	0.168	0.174	0.172	0.173	---	---	28.39	2014	64,556	29	11,182.68	17,393.29	0.140	0.215	5752
4,034,950	0.680	---	---	---	01/07/2005	30/12/2010	---	CHATZIKRANIOTIS & SONS SA (CR)	0.153	---	↘	0.153	08/04/2015	---	---	---	---	---	---	---	---	2014	---	---	---	617.35	0.120	0.200	3577
124,170,201	0.780	---	---	---	28/06/2002	07/02/2005	---	CORINTH PIPEWORKS SA (CR)	0.950	-3.06	€	0.980	08/04/2015	0.995	0.950	0.995	0.950	0.957	---	---	---	2014	5,504	34	5,266.37	117,961.69	0.756	1.31	1757
9,907,500	0.300	---	---	---	06/10/2005	13/02/2002	---	CPI SA (CR)	0.138	---	↘	0.138	08/04/2015	---	---	---	---	---	---	---	11.91	2014	---	---	---	1,367.24	0.126	0.234	9572
27,379,200	0.520	---	0.1	---	24/07/2014	18/09/2013	---	CRETE PLASTICS SA (CR)	5.64	2.36	#	5.51	08/04/2015	5.64	5.64	5.64	5.64	5.64	---	---	16.34	2014	54	1	304.56	154,418.69	4.60	5.64	1357
15,000,000	0.300	---	---	---	06/07/2007	18/07/2000	---	DAIOS PLASTICS SA (CR)	2.69	-0.37	€	2.70	08/04/2015	2.69	2.69	2.69	2.69	2.69	---	---	---	2014	33	1	88.77	40,350.00	2.25	2.70	1357
34,720,000	0.310	---	---	---	16/06/2010	01/08/2007	---	DROMEAS SA (CR)	0.122	-5.43	€	0.129	08/04/2015	0.110	0.109	0.122	0.122	0.115	---	---	---	2014	17,830	49	2,054.37	4,235.84	0.100	0.162	3726
3,873,120	0.300	---	---	---	07/07/2008	04/10/2012	---	DRUCKFARBEN HELLAS (CR)	0.657	---	↘	0.657	08/04/2015	---	---	---	---	---	---	---	---	2014	---	---	---	2,544.64	0.657	0.900	1357
11,250,000	0.560	---	---	---	26/07/2010	16/06/1999	---	EKTER SA (CR)	0.390	-7.14	€	0.420	08/04/2015	0.390	0.390	0.390	0.390	0.390	---	---	---	2014	400	1	156.00	4,387.50	0.380	0.518	2357
32,188,050	1.04	---	---	---	21/07/2008	20/01/2000	---	EL. D. MOUZAKIS SA (CB)	0.270	---	↘	0.270	08/04/2015	---	---	---	---	---	---	---	---	2014	---	---	---	8,690.77	0.240	0.290	3763
18,435,000	1.00	---	---	---	07/07/2009	10/09/2010	---	ELASTRON (CR)	0.406	-9.78	€	0.450	08/04/2015	0.450	0.405	0.451	0.405	0.406	---	---	---	2014	7,325	26	2,976.76	7,484.61	0.370	0.697	1757
31,734,530	1.60	---	---	---	09/07/2007	19/07/2006	---	ELGEKA SA (CR)	0.285	---	↘	0.285	08/04/2015	---	---	---	---	---	---	---	---	2014	---	---	---	9,044.34	0.155	0.285	3577
23,828,130	0.500	---	---	---	07/07/2010	17/02/2009	---	ELINOIL S.A. (CR)	0.700	---	↘	0.700	08/04/2015	---	---	---	---	---	---	---	17.56	2014	---	---	---	16,679.69	0.621	0.968	537
177,001,313	1.03	---	---	---	05/07/2011	20/12/2007	---	ELLAKTOR (CR)	1.69	2.42	#	1.65	08/04/2015	1.69	1.65	1.69	1.69	1.66	---	---	---	2014	134,382	130	223,046.54	299,132.22	1.56	2.62	2357
82,667,000	0.300	---	---	---	22/07/2014	---	---	ELTECH ANEMOS S.A. (CR)	0.605	0.83	#	0.600	08/04/2015	0.573	0.571	0.605	0.605	0.596	---	---	10.26	2014	30,600	76	18,241.05	50,013.54	0.571	0.845	7537
26,730,187	0.600	---	0.05	---	23/06/2014	30/12/2010	---	ELTON SA (CR)	0.990	---	↘	0.990	08/04/2015	0.990	0.990	0.990	0.990	0.990	---	---	10.81	2014	110	1	108.90	26,462.89	0.862	0.990	1353

Number of Outstanding Securities	Nominal Value	Dividends [1]			Date of Last Coupon		Note	Shares	Closing price	% change	Previous closing price/date	Open price	Price min	Price max	Last price	Avg price	Last Bid [7]	Last Ask [7]	P/E after	Year	Volume	Trades	Transactions Value[8]	Company Mkt Value (thou. €)	Year low	Year high	Sector[4]		
14,050,971	0.340	---	---	---	06/07/2011	17/10/2002	---	ELTRAK SA (CR)	1.46	-2.67 (€)	1.50	08/04/2015	1.50	1.46	1.50	1.46	1.49	---	---	---	2014	1,219	3	1,819.74	20,514.42	1.07	1.52	2753	
125,562,262	0.320	---	---	---	30/05/2014	02/12/2014	---	ELVAL SA. (CB)	1.18	3.51 #	1.14	08/04/2015	1.14	1.14	1.18	1.18	1.15	---	---	8.49	2014	1,309	10	1,500.59	148,163.47	0.965	1.41	1753	
13,230,000	0.300	---	---	---	11/08/2010	24/11/2014	---	ELVE SA (CR)	0.430	---	0.430	08/04/2015	0.420	0.420	0.430	0.430	0.426	---	---	0.97	2014	1,800	5	766.50	5,688.90	0.390	0.484	3763	
14,707,876,542	0.300	---	---	---	02/05/2008	13/06/2013	---	EUROBANK ERGASIAS (CR)	0.111	3.74 #	0.107	08/04/2015	0.109	0.108	0.112	0.111	0.110	---	---	---	2014	39,097,411	1,052	4,305,400.17	1,632,574.30	0.085	0.209	8355	
7,959,900	0.600	---	---	---	02/06/2010	10/12/2013	5031	EUROCONSULTANTS S.A. (CR)	1.45	-7.64 (€)	1.57	08/04/2015	1.58	1.45	1.58	1.45	1.48	---	---	-(6)-	2014	5,952	20	8,811.90	11,541.86	1.45	2.22	2791	
27,503,677	0.630	0.1	---	---	11/07/2013	18/10/1999	---	EUROPEAN RELIANCE INSUR. (CR)	1.29	4.03 #	1.24	08/04/2015	1.23	1.23	1.31	1.29	1.28	---	---	---	2014	1,081	11	1,382.23	35,479.74	1.22	1.46	8536	
13,673,200	0.880	---	---	---	18/07/2008	26/07/2001	---	EVROFARMA SA (CR)	0.368	---	0.368	08/04/2015	---	---	---	---	---	---	---	---	---	---	---	---	5,031.74	0.198	0.373	3577	
106,500,000	0.600	0.15	0.36	---	05/05/2014	28/01/2000	---	EYDAP S.A. (CR)	4.96	-0.80 (€)	5.00	08/04/2015	5.07	4.95	5.11	4.96	5.01	---	---	12.59	2014	45,694	350	228,829.88	528,240.00	4.95	7.35	7577	
52,800,154	0.300	---	0.2	---	20/08/2014	21/06/2004	---	F.G. EUROPE S.A. (CR)	0.510	---	0.510	08/04/2015	---	---	---	---	---	---	---	---	---	---	---	---	26,928.08	0.406	0.562	3722	
10,203,575	0.730	---	---	---	16/07/2007	18/10/1999	---	FIERATEX SA (CR)	0.090	---	0.090	08/04/2015	0.090	0.090	0.090	0.090	0.090	---	---	---	2014	70	1	6.30	918.32	0.080	0.228	3763	
11,720,024	0.540	---	0.0394	---	21/08/2014	07/08/2014	---	FLEXOPACK SA (CR)	2.58	---	2.58	08/04/2015	---	---	---	---	---	---	---	---	7.91	2014	---	---	---	30,237.66	1.91	2.79	2723
4,181,450	0.500	---	---	---	21/08/2000	05/03/2002	---	FLOUR MILLS SARANTOPOULOS SA	0.950	---	0.950	08/04/2015	---	---	---	---	---	---	---	---	---	---	---	---	3,972.38	0.950	0.950	3577	
66,948,210	0.300	---	---	---	14/07/2009	23/09/2014	---	FOLLI FOLLIE (CR)	25.65	-1.72 (€)	26.10	08/04/2015	26.40	25.30	26.73	25.65	25.94	---	---	---	2014	71,009	794	1,842,124.60	1,717,221.59	23.15	31.50	5379	
50,992,322	1.07	---	---	---	21/06/2010	16/07/2002	---	FOURLIS (CR)	2.68	-0.37 (€)	2.69	08/04/2015	2.73	2.68	2.79	2.68	2.72	---	---	---	2014	9,261	68	25,213.01	136,659.42	2.62	3.70	3722	
50,593,832	0.300	---	---	---	07/07/2010	07/09/2011	---	FRIGOGLASS SA (CR)	1.72	---	1.72	08/04/2015	1.74	1.71	1.76	1.72	1.74	---	---	---	2014	384,554	98	669,920.32	87,021.39	1.55	1.95	2757	
14,076,360	0.370	---	---	---	19/08/2008	22/07/2003	---	GALAXIDI S.A. (CR)	0.242	---	0.242	08/04/2015	---	---	---	---	---	---	---	---	8.13	2014	---	---	---	3,406.48	0.168	0.350	3573
94,462,368	0.570	---	---	---	01/08/2011	02/01/2009	---	GEK TERNA (CR)	1.64	1.86 #	1.61	08/04/2015	1.63	1.61	1.67	1.64	1.63	---	---	27.22	2014	18,801	80	30,703.06	154,918.28	1.52	2.47	2357	
8,418,750	0.300	0.46	---	---	21/01/2015	27/06/2012	---	GEKE SA (CB)	4.30	---	4.30	08/04/2015	---	---	---	---	---	---	---	---	---	---	---	---	36,200.63	4.30	6.12	5753	
24,060,000	0.300	---	0.017	---	07/07/2014	21/01/2000	---	GEN. COMMERCIAL & IND.SA (CR)	0.315	---	0.315	08/04/2015	---	---	---	---	---	---	---	---	11.09	2014	---	---	---	7,578.90	0.265	0.420	2797
34,770,982	1.55	---	0.3	---	17/01/2014	27/07/2000	---	GR. SARANTIS SA (CR)	7.48	-0.27 (€)	7.50	08/04/2015	7.56	7.20	7.56	7.48	7.29	---	---	15.84	2014	278	8	2,026.92	260,086.95	6.70	7.85	3767	
101,260,000	2.13	---	0.1821	0.3037	19/03/2015	08/01/2014	---	GRIVALIA PROPERTIES (CR)	7.24	-2.16 (€)	7.40	08/04/2015	7.24	7.16	7.29	7.24	7.22	---	---	18.94	2014	132,191	565	954,924.78	733,122.40	7.15	9.00	8675	
8,340,750	1.20	---	---	---	25/06/2009	30/07/2001	---	HAIDEMENOS SA (CR)	0.968	---	0.968	08/04/2015	---	---	---	---	---	---	---	---	---	---	---	---	8,073.85	0.210	0.968	2791	
101,279,627	0.380	---	---	---	26/06/2008	14/07/2006	---	HALKOR SA (CB)	0.316	-1.25 (€)	0.320	08/04/2015	0.330	0.316	0.338	0.316	0.333	---	---	---	2014	151	3	50.22	32,004.36	0.244	0.455	1755	
29,546,360	0.710	---	---	---	20/06/2008	23/08/2000	---	HELLENIC CABLES SA (CR)	0.640	0.47 #	0.637	08/04/2015	0.650	0.640	0.650	0.640	0.644	---	---	---	2014	3,200	3	2,060.00	18,909.67	0.603	0.989	2733	
65,368,563	0.740	0.09	---	---	03/06/2013	16/07/2014	---	HELLENIC EXCHANGES-A.S.E. (CR)	4.95	3.99 #	4.76	08/04/2015	4.76	4.76	4.95	4.95	4.87	---	---	31.33	2014	75,829	265	369,581.68	323,574.39	4.42	6.80	8777	
305,635,185	2.18	0.15	---	---	31/12/2014	01/10/2003	4795	HELLENIC PETROLEUM (CR)	3.60	1.12 #	3.56	08/04/2015	3.56	3.52	3.60	3.60	3.56	---	---	---	2014	49,312	229	175,591.86	1,100,286.67	3.40	4.66	537	
305,732,436	0.410	---	---	---	08/07/2009	28/09/2011	---	HYGEIA SA (CR)	0.149	2.76 #	0.145	08/04/2015	0.144	0.144	0.151	0.149	0.146	---	---	---	2014	5,050	5	736.80	45,554.13	0.140	0.206	4533	
53,155,053	0.440	---	---	---	24/11/2014	16/07/2008	---	IASO SA (CR)	0.719	-2.58 (€)	0.738	08/04/2015	0.720	0.719	0.720	0.719	0.720	---	---	---	2014	4,818	17	3,467.96	38,218.48	0.690	0.900	4533	
8,298,467	0.400	---	---	---	30/08/1993	08/05/2013	---	IDEAL GROUP SA (CR)	1.04	---	1.04	08/04/2015	---	---	---	---	---	---	---	---	---	---	---	---	8,630.41	0.668	1.16	9574	
28,580,100	0.400	---	0.025	---	18/08/2014	10/10/2013	---	IKTINOS HELLAS SA (CR)	0.940	0.21 #	0.938	08/04/2015	0.938	0.918	0.940	0.940	0.934	---	---	8.98	2014	2,430	15	2,269.82	26,865.29	0.891	1.30	2353	
9,090,000	0.900	---	---	---	15/05/2009	13/10/2014	---	ILYDA S.A. (CR)	0.666	---	0.666	08/04/2015	---	---	---	---	---	---	---	---	---	---	---	---	6,053.94	0.666	0.739	9537	
20,578,374	0.620	---	---	---	02/06/2011	05/05/1999	---	INFORM P. LYKOS SA (CR)	1.74	4.19 #	1.67	08/04/2015	1.70	1.66	1.75	1.75	1.68	---	---	1.41	2014	4,150	22	6,965.57	35,806.37	1.42	1.94	2791	
11,233,200	0.730	---	---	---	12/07/2010	30/07/1999	---	INTERTECH SA (CR)	0.240	-7.34 (€)	0.259	08/04/2015	0.185	0.185	0.240	0.240	0.228	---	---	---	2014	1,710	5	389.50	2,695.97	0.169	0.308	9572	
34,986,430	0.440	---	---	---	25/07/2008	23/02/2010	---	INTERWOOD-XYLEMPORIA (CR)	0.085	---	0.085	08/04/2015	---	---	---	---	---	---	---	---	---	---	---	---	---	3,474.38	0.059	0.145	2353
2,566,836	0.440	---	---	---	13/08/2010	09/01/2007	---	INTERWOOD-XYLEMPORIA (PR)	0.195	---	0.195	08/04/2015	---	---	---	---	---	---	---	---	---	---	---	---	---	3,474.38	0.195	0.195	2353
23,154,250	1.36	---	---	---	12/08/2008	02/08/2010	---	INTRACOM CONSTR. (CR)	0.495	-0.80 (€)	0.499	08/04/2015	0.495	0.495	0.500	0.495	0.495	---	---	4.00	2014	210	3	104.00	11,461.35	0.370	0.610	2357	
133,025,996	1.41	---	---	---	03/07/2007	07/01/2002	---	INTRACOM HOLDINGS (CR)	0.413	---	0.413	08/04/2015	0.406	0.406	0.417	0.413	0.411	---	---	---	2014	21,990	26	9,027.69	54,939.74	0.345	0.511	9578	
158,961,721	0.300	0.0026	---	---	30/05/2013	14/11/2007	---	INTRALOT (CR)	1.53	1.32 #	1.51	08/04/2015	1.52	1.50	1.53	1.53	1.52	---	---	---	2014	5,075	62	7,689.73	243,211.43	1.05	1.80	5752	

Number of Outstanding Securities	Nominal Value	Dividends [1]			Date of Last Coupon		Note	Shares	Closing price	% change	Previous closing price/date	Open price	Price min	Price max	Last price	Avg price	Last Bid [7]	Last Ask [7]	P/E after	Year	Volume	Trades	Transactions Value[8]	Company Mkt Value (thou. €)	Year low	Year high	Sector[4]	
		2012	2013	2014	Dividend [2]	Right																						
77,654,850	0.580	---	---	---	01/07/2011	21/02/2003	---	J & P - AVAX SA (CR)	0.479	8.13 #	0.443	08/04/2015	0.443	0.435	0.479	0.479	0.453	---	---	2.23	2014	1,113	9	504.00	37,196.67	0.403	0.660	2357
136,059,759	1.19	---	0.18	0.18	23/12/2014	05/03/2014	---	JUMBO SA (CR)	8.65	0.12 #	8.64	08/04/2015	8.77	8.55	8.80	8.65	8.71	---	---	16.10	2014	169,686	357	1,477,906.35	1,176,916.92	7.06	10.98	3747
9,742,920	0.400	0.01	0.01	---	08/08/2014	14/07/2000	---	KARAMOLEGOS SA (CR)	2.00	---	2.00	08/04/2015	---	---	---	---	---	---	---	19.22	2014	---	---	---	19,485.84	1.57	2.00	3577
14,679,792	1.68	---	---	---	24/06/2014	04/09/2000	---	KARATZIS SA (CR)	3.60	---	3.60	08/04/2015	---	---	---	---	---	---	---	8.71	2014	---	---	---	52,847.25	2.89	3.65	2723
13,202,756	0.350	---	---	---	01/07/2004	05/08/2014	---	KEKROPS SA (CR)	0.310	6.90 #	0.290	08/04/2015	0.310	0.310	0.310	0.310	0.310	---	---	---	2014	10	1	3.10	4,092.85	0.247	0.424	8633
7,595,160	0.600	---	---	---	08/08/2008	18/08/2010	---	KIRIAKOULIS SHIPPING SA (CR)	0.462	10.00 #	0.420	08/04/2015	0.450	0.450	0.462	0.462	0.459	---	---	---	2014	800	5	367.20	3,508.96	0.340	0.638	5759
23,648,700	0.350	---	---	---	13/07/2011	31/03/2015	---	KLEEMAN HELLAS SA (CR)	1.62	1.25 #	1.60	08/04/2015	1.60	1.60	1.62	1.62	1.61	---	---	6.52	2014	402	5	645.10	38,310.89	1.22	1.84	2757
40,219,218	0.300	---	---	---	25/05/2009	09/07/2013	---	KLOUKINAS - LAPPAS SA (CR)	0.372	1.36 #	0.367	08/04/2015	0.371	0.357	0.372	0.372	0.357	---	---	---	2014	4,627	13	1,653.58	14,961.55	0.330	0.470	2357
21,224,340	0.420	---	---	---	02/07/2008	25/04/2006	---	KORDELLOS BROS SA (CR)	0.247	---	0.247	08/04/2015	---	---	---	---	---	---	---	---	2014	---	---	---	5,242.41	0.180	0.250	1757
13,586,500	0.390	---	---	---	25/06/2010	28/05/2008	---	KORRES (CR)	3.41	---	3.41	08/04/2015	---	---	---	---	---	---	---	---	2014	---	---	---	46,329.97	3.10	3.80	3767
29,480,000	0.420	---	---	---	19/07/2010	01/08/2007	---	KRETA FARM SA (CR)	0.450	-2.81 €	0.463	08/04/2015	0.463	0.450	0.470	0.450	0.459	---	---	12.36	2014	1,042	19	478.30	13,266.00	0.355	0.520	3577
33,065,136	0.380	---	---	---	06/07/2009	16/09/2013	---	KRI-KRI S.A. (CR)	1.63	---	1.63	08/04/2015	---	---	---	---	---	---	---	15.09	2014	---	---	---	53,896.17	1.60	1.86	3577
15,804,800	0.330	---	---	---	15/06/2010	12/03/2004	---	KTIMA KOSTAS LAZARIDIS SA (CR)	0.329	---	0.329	08/04/2015	---	---	---	---	---	---	---	---	2014	---	---	---	5,199.78	0.276	0.396	3535
23,719,554	0.980	---	---	0.1006	19/03/2015	15/09/2014	---	KYRIAKIDIS MARBLES SA (CR)	2.13	3.90 #	2.05	08/04/2015	2.13	2.13	2.13	2.13	2.13	---	---	8.09	2014	2	1	4.26	50,522.65	1.61	2.41	2353
79,721,775	0.300	---	---	---	30/05/2007	23/06/2014	---	LAMDA DEVELOPMENT SA (CR)	3.26	0.31 #	3.25	08/04/2015	3.25	3.17	3.30	3.26	3.25	---	---	---	2014	17,934	75	58,271.19	259,892.99	2.46	4.63	8633
21,364,000	1.12	---	---	---	05/07/2010	10/08/2005	---	LAMPASA HOTEL SA (CR)	17.20	2.38 #	16.80	08/04/2015	17.10	17.10	17.71	17.20	17.46	---	---	-(6)-	2014	187	6	3,264.37	367,460.80	16.10	18.00	5753
5,939,268	0.620	---	---	---	10/07/2003	03/01/2002	---	LANAKAM SA (CR)	0.990	---	0.990	08/04/2015	---	---	---	---	---	---	---	---	2014	---	---	---	5,879.88	0.990	1.16	3763
7,734,375	1.00	---	---	---	09/07/2007	07/01/2011	---	LIVANIS SA (CR)	0.170	---	0.170	08/04/2015	---	---	---	---	---	---	---	---	2014	---	---	---	1,314.84	0.117	0.210	5557
4,740,000	0.860	---	---	---	14/03/2003	---	---	LOGISMOS S.A. (CR)	0.300	---	0.300	08/04/2015	---	---	---	---	---	---	---	---	2014	---	---	---	1,422.00	0.216	0.515	9533
17,125,062	0.940	---	---	---	01/06/2010	02/02/2015	---	LOULIS MILLS SA (CR)	1.81	0.56 #	1.80	08/04/2015	1.81	1.81	1.81	1.81	1.81	---	---	8.85	2014	30	1	54.30	30,996.36	1.64	2.35	3577
937,122,261	0.300	---	---	---	26/04/2007	29/08/2014	---	MARFIN INVESTMENT GROUP (CR)	0.134	-1.47 €	0.136	08/04/2015	0.137	0.134	0.139	0.134	0.136	---	---	---	2014	347,018	175	47,271.16	125,574.38	0.125	0.232	8775
9,819,370	0.690	---	---	---	14/08/2007	09/01/2004	---	MATHIOS REFRACTORY SA (CR)	0.336	---	0.336	08/04/2015	---	---	---	---	---	---	---	---	2014	---	---	---	3,299.31	0.199	0.360	2353
468,700	0.47	0.65	0.15	---	04/12/2014	21/05/2004	---	MEREMEREN KOMB. A.D. PR. (GDR)	7.09	0.57 #	7.05	08/04/2015	7.39	7.00	7.39	7.09	7.01	---	---	0.48	2014	3,345	6	23,447.00	3,323.08	5.91	8.15	1775
51,950,600	0.320	0.25	0.3	---	20/06/2014	21/10/2005	---	METKA (CR)	8.70	1.52 #	8.57	08/04/2015	8.75	8.62	8.75	8.70	8.70	---	---	6.12	2014	32,713	184	284,513.06	451,970.22	8.34	10.50	2757
10,500,000	0.950	---	---	---	24/06/2008	19/12/2013	---	MEVACO SA (CR)	1.00	---	1.00	08/04/2015	1.00	1.00	1.00	1.00	1.00	---	---	---	2014	1,000	1	1,000.00	10,500.00	0.701	1.20	2757
6,700,000	0.800	---	0.16	---	26/05/2014	29/05/2014	---	MILLS KEPENOS (CR)	1.89	---	1.89	08/04/2015	---	---	---	---	---	---	---	8.21	2014	---	---	---	12,663.00	1.17	2.14	3577
6,200,000	0.500	---	---	---	22/06/2010	01/11/1995	---	MINERVA KNITWEAR SA (CB)	0.269	-0.37 €	0.270	08/04/2015	0.269	0.269	0.269	0.269	0.269	---	---	---	2014	50	1	13.45	1,667.80	0.225	0.300	3763
12,417,000	0.370	---	---	---	28/07/2008	06/09/2011	---	MLS MULTIMEDIA SA (CR)	4.04	0.25 #	4.03	08/04/2015	3.99	3.99	4.04	4.04	4.02	---	---	29.74	2014	2,220	27	8,928.93	50,164.68	3.85	4.25	9537
4,588,137	16.00	---	---	---	30/06/2005	17/08/2011	---	MOCHLOS SA (CR)	0.621	3.33 #	0.601	08/04/2015	0.607	0.603	0.621	0.620	0.611	---	---	---	2014	5,123	29	3,129.25	2,849.23	0.452	1.05	2357
11,700,000	0.590	---	---	---	02/06/2009	24/07/2012	---	MOTODYNAMICS S.A. (CR)	0.245	2.08 #	0.240	08/04/2015	0.236	0.227	0.245	0.245	0.234	---	---	---	2014	10,625	25	2,481.03	2,866.50	0.199	0.300	5379
110,782,980	0.750	0.3	0.2	---	26/06/2014	04/11/2013	---	MOTOR OIL (CR)	6.74	1.51 #	6.64	08/04/2015	6.67	6.55	6.78	6.74	6.74	---	---	---	2014	259,111	262	1,745,741.29	746,677.29	5.64	8.07	533
116,915,862	1.07	---	---	---	11/05/2009	06/07/2011	---	MYTILINEOS HOLDINGS (CR)	5.93	3.13 #	5.75	08/04/2015	5.82	5.77	5.93	5.93	5.84	---	---	---	2014	60,670	253	354,321.01	693,311.06	4.18	6.97	1755
8,321,682	0.670	---	---	---	17/08/2007	23/11/1999	---	N. LEVEDERIS SA (CB)	0.154	---	0.154	08/04/2015	---	---	---	---	---	---	---	---	2014	---	---	---	2,854.40	0.126	0.220	1757
2,160,524	0.670	0.0436	0.0436	---	18/08/2014	23/11/1999	---	N. LEVEDERIS SA (PB)	0.728	---	0.728	08/04/2015	---	---	---	---	---	---	---	---	2014	---	---	---	2,854.40	0.380	0.728	1757
11,510,102	0.890	---	---	---	24/06/2005	06/10/1999	---	NAFPAKTOS TEXTILE IND. SA (CB)	0.240	6.19 #	0.226	08/04/2015	0.240	0.240	0.240	0.240	0.240	---	---	---	2014	194	1	46.56	2,762.42	0.193	0.302	3763
6,340,000	0.600	---	---	---	30/11/2009	12/07/2000	---	NAKAS MUSIC	0.770	---	0.770	08/04/2015	---	---	---	---	---	---	---	23.93	2014	---	---	---	4,881.80	0.461	1.05	5379
3,533,149,631	0.300	---	---	---	16/05/2008	24/05/2013	---	NATIONAL BANK (CR)	1.14	1.79 #	1.12	08/04/2015	1.14	1.10	1.16	1.14	1.12	---	---	---	2014	5,444,908	1,068	6,114,573.36	4,027,790.58	0.790	1.72	8355
23,935,280	0.300	---	---	---	29/06/2009	13/06/2000	---	NAYTEMPORIKI PUBLISHING SA(CR)	0.160	---	0.160	08/04/2015	---	---	---	---	---	---	---	---	2014	---	---	---	3,829.64	0.117	0.200	5557

Number of Outstanding Securities	Nominal Value	Dividends [1]			Date of Last Coupon		Note	Shares	Closing price	% change	Previous closing price/date	Open price	Price min	Price max	Last price	Avg price	Last Bid [7]	Last Ask [7]	P/E after	Year	Volume	Trades	Transactions Value[8]	Company Mkt Value (thou. €)	Year low	Year high	Sector[4]	
2012	2013	2014	Dividend [2]	Right																								
27,848,000	0.300	0.0137	0.004	---	18/08/2014	02/09/2003	---	NEWSPHONE HELLAS SA (CR)	0.240	---	↘	0.240	08/04/2015	---	---	---	---	---	27.29	2014	---	---	---	6,683.52	0.176	0.300	2791	
6,132,500	1.25	---	---	---	24/06/2011	19/06/2001	---	NEXANS HELLAS SA (CR)	1.42	---	↘	1.42	08/04/2015	---	---	---	---	---	---	2014	---	---	---	8,708.15	1.31	1.77	2733	
319,000,000	0.300	0.57	0.25	0.2017	12/01/2015	25/04/2001	---	OPAP (CR)	8.60	-0.46	€	8.64	08/04/2015	8.60	8.54	8.79	8.60	8.63	14.20	2014	844,082	1,692	7,285,628.30	2,743,400.00	6.75	9.90	5752	
490,150,389	2.83	---	---	---	28/06/2011	18/06/1998	---	OTE (CR)	8.28	-0.72	€	8.34	08/04/2015	8.37	8.28	8.40	8.28	8.33	36.86	2014	349,291	735	2,908,691.27	4,058,445.22	7.25	9.47	6535	
25,000,000	2.00	0.05	0.12	---	17/07/2014	08/08/2003	---	P.P.A. S.A. (CR)	11.40	1.24	#	11.26	08/04/2015	11.46	11.24	11.46	11.40	11.40	42.14	2014	12,955	66	147,720.87	285,000.00	9.67	16.40	2777	
4,971,466	1.46	---	---	---	04/07/2007	08/10/2003	---	PAIRIS SA (CR)	0.165	-5.71	€	0.175	08/04/2015	0.165	0.165	0.165	0.165	0.165	---	2014	2,000	2	330.00	820.29	0.106	0.236	2723	
3,953,090	0.900	---	---	---	02/07/2001	05/12/2012	---	PAPERPACK (CR)	0.910	-0.76	€	0.917	08/04/2015	0.945	0.905	0.945	0.910	0.907	---	2014	4,555	12	4,130.54	3,597.31	0.684	0.960	2723	
50,797,369	0.310	---	---	---	17/08/2000	12/10/2010	---	PAPOUTSANIS (CR)	0.300	---	↘	0.300	08/04/2015	0.330	0.293	0.330	0.300	0.299	---	2014	548	13	164.04	15,239.21	0.287	0.439	3767	
7,070,400	0.930	---	---	---	18/05/2010	12/05/2011	---	PETROPOULOS PETROS (CR)	3.40	0.59	#	3.38	08/04/2015	3.32	3.30	3.40	3.40	3.36	---	2014	2,293	28	7,703.65	24,039.36	2.98	3.50	2753	
6,101,979,715	0.300	---	---	---	16/05/2008	05/06/2013	---	PIRAEUS BANK (CR)	0.337	4.33	#	0.323	08/04/2015	0.330	0.326	0.337	0.337	0.332	---	2014	10,039,810	1,442	3,335,698.48	2,056,367.16	0.301	1.01	8355	
22,080,000	0.330	0.12	0.2	---	21/05/2014	03/10/2000	---	PLAISIO COMPUTERS SA (CR)	5.79	-0.17	€	5.80	08/04/2015	5.90	5.66	5.90	5.79	5.74	---	2014	7,397	59	42,434.56	127,843.20	5.03	6.25	9572	
232,000,000	4.60	0.025	---	---	22/07/2013	12/12/2001	---	PPC (CR)	5.45	1.30	#	5.38	08/04/2015	5.43	5.35	5.50	5.45	5.44	---	2014	179,435	357	975,336.10	1,264,400.00	4.25	7.65	7535	
11,812,193	0.470	---	---	0.02	26/03/2015	15/11/2006	---	PROFILE SA (CR)	0.391	2.90	#	0.380	08/04/2015	0.388	0.380	0.391	0.391	0.386	---	2014	10,554	51	4,072.89	4,618.57	0.366	0.527	9533	
27,345,120	0.470	---	---	---	18/07/2005	26/02/2014	---	QUALITY & RELIABILITY SA (CR)	0.455	---	↘	0.455	08/04/2015	0.455	0.455	0.455	0.455	0.455	---	2014	40,275	7	18,325.13	12,442.03	0.290	0.560	9533	
11,962,443	0.500	---	---	---	05/09/2008	12/12/2013	---	QUEST HOLDINGS (CR)	4.79	-1.03	€	4.84	08/04/2015	4.50	4.44	4.79	4.79	4.49	---	2014	825	6	3,701.50	57,300.10	4.39	5.35	9533	
57,434,884	1.31	---	---	---	05/06/2008	12/06/2009	---	REDS S.A. (CR)	0.405	1.50	#	0.399	08/04/2015	0.386	0.383	0.411	0.411	0.394	---	2014	5,490	31	2,165.35	23,261.13	0.371	0.516	8633	
22,280,000	0.300	---	---	---	11/04/2011	23/02/2007	---	REVOIL (CR)	0.270	-3.57	€	0.280	08/04/2015	0.299	0.270	0.299	0.270	0.272	---	2014	1,110	6	301.60	6,015.60	0.212	0.403	5379	
7,500,000	0.480	0.0024	0.0863	---	13/08/2014	10/02/2014	---	S.KANAKIS SA (CR)	1.97	0.51	#	1.96	08/04/2015	1.96	1.93	1.97	1.97	1.96	---	2014	132	12	258.81	14,775.00	1.67	2.10	3577	
52,067,296	0.300	---	---	---	23/12/2003	24/01/2007	---	SELECTED TEXT. IND. ASSOC (CR)	0.238	---	↘	0.238	08/04/2015	---	---	---	---	---	---	2014	---	---	---	12,392.02	0.172	0.273	3763	
96,243,908	0.410	---	---	---	26/06/2008	17/07/2000	---	SIDENOR (CR)	0.543	2.26	#	0.531	08/04/2015	0.525	0.522	0.543	0.543	0.530	---	2014	23,451	51	12,434.33	52,260.44	0.492	0.927	1757	
6,456,530	1.61	---	---	---	29/06/2001	02/08/2010	---	SPACE HELLAS SA (CR)	1.65	---	↘	1.65	08/04/2015	---	---	---	---	---	---	2014	---	---	---	10,653.27	1.43	1.96	9578	
28,438,268	0.300	---	---	---	21/08/2006	24/11/1999	---	SPIROY AGRICULTURE SA (CR)	0.310	---	↘	0.310	08/04/2015	---	---	---	---	---	---	2014	---	---	---	8,815.86	0.261	0.357	1357	
33,125,000	5.00	---	---	---	03/07/2006	18/08/2010	---	TECHNICAL OLYMPIC SA (CR)	0.779	---	↘	0.779	08/04/2015	0.725	0.725	0.779	0.779	0.771	---	2014	687	11	529.36	25,804.38	0.676	1.01	3728	
109,314,400	0.300	---	---	---	28/05/2012	09/07/2014	---	TERNA ENERGY (CR)	2.26	4.15	#	2.17	08/04/2015	2.18	2.15	2.26	2.26	2.22	---	2014	50,523	140	112,033.09	247,050.54	1.70	2.95	7537	
36,300,000	1.12	0.162	0.285	---	14/08/2014	12/12/2007	---	THESSALONIKA WATER & SEWERAGE	2.55	-0.39	€	2.56	08/04/2015	2.56	2.52	2.56	2.55	2.55	---	2014	8,702	56	22,203.63	92,565.00	2.44	3.35	7577	
45,094,620	0.660	0.0467	0.05	---	20/01/2015	01/11/1999	---	THRACE PLASTICS SA (CR)	1.30	---	↘	1.30	08/04/2015	1.30	1.29	1.30	1.30	1.30	---	2014	10,077	29	13,090.10	58,623.01	0.849	1.46	1357	
77,063,568	4.00	---	---	---	25/06/2014	25/06/2004	---	TITAN CEMENT (CR)	22.00	0.23	#	21.95	08/04/2015	21.95	21.32	22.08	22.00	21.67	---	2014	22,466	184	486,831.12	1,769,574.30	18.42	24.95	2353	
7,568,960	4.00	---	---	---	25/06/2014	25/06/2004	---	TITAN CEMENT CO. (PR)	9.80	0.10	#	9.79	08/04/2015	9.60	9.60	9.80	9.80	9.70	---	2014	100	2	970.00	1,769,574.30	7.45	10.05	2353	
10,080,000	3.00	1.5	0.6	---	13/08/2014	27/08/2001	---	TPA SA (CR)	17.60	0.57	#	17.50	08/04/2015	17.23	17.23	17.80	17.60	17.61	---	2014	5,544	19	97,607.27	177,408.00	16.23	23.95	2777	
54,888,240	1.13	0.1	0.09	---	25/04/2014	22/03/2006	---	TRASTOR REAL EST. INV. CO.(CR)	1.34	0.75	#	1.33	08/04/2015	1.33	1.32	1.34	1.34	1.33	---	2014	16,201	19	21,528.10	73,550.24	0.900	1.36	8671	
15,627,315	0.300	---	---	---	16/11/1992	03/12/2012	---	UNIBIOS (CR)	0.122	4.27	#	0.117	08/04/2015	0.127	0.122	0.127	0.122	0.123	---	2014	2,530	6	310.81	1,906.53	0.081	0.180	2353	
18,810,000	0.400	---	---	---	08/07/2010	14/11/2007	---	VARVERIS - MODA BAGNO SA (CR)	0.100	1.01	#	0.099	08/04/2015	0.090	0.090	0.100	0.100	0.097	---	2014	70	2	6.80	1,881.00	0.090	0.184	2353	
219,611,308	---	---	---	---	14/02/2014	---	---	VIOHALCO SA/NV (CB)	2.77	-0.36	€	2.78	08/04/2015	2.78	2.74	2.81	2.77	2.78	---	---	---	41,786	95	116,237.07	608,323.32	1.79	4.11	2727
4,968,600	2.88	---	---	---	01/07/1998	14/12/1998	---	VIS SA (CR)	0.590	-3.60	€	0.612	08/04/2015	0.650	0.590	0.650	0.590	0.610	---	2014	1,500	2	915.00	2,931.47	0.461	1.34	2723	
6,325,000	0.600	---	---	---	02/05/2014	17/02/2014	---	VOGIATZOGLOU SYSTEMS SA (CR)	0.984	---	↘	0.984	08/04/2015	---	---	---	---	---	---	2014	---	---	---	6,223.80	0.871	1.00	2797	

Exchange Traded Funds (ETFs)

5,848,618	---	---	---	---	24/01/2008	---	---	ALPHA ETF FTSE Athex Large Cap	2.35	---	↘	2.35	08/04/2015	---	---	---	---	---	---	---	---	---	---	---	---	---	2.13	2.84	12003
-----------	-----	-----	-----	-----	------------	-----	-----	--------------------------------	------	-----	---	------	------------	-----	-----	-----	-----	-----	-----	-----	-----	-----	-----	-----	-----	-----	------	------	-------

Number of Outstanding Securities	Nominal Value	Dividends [1]			Date of Last Coupon		Note	Shares	Closing price	% change	Previous closing price/date	Open price	Price min	Price max	Last price	Avg price	Last Bid [7]	Last Ask [7]	P/E after	Year	Volume	Trades	Transactions Value[8]	Company Mkt Value (thou. €)	Year low	Year high	Sector[4]
294,878	---	---	---	---	29/06/2009	---	NBGAM ETF	8.57	---	8.57	08/04/2015	---	---	---	---	---	---	---	---	---	---	---	---	---	7.97	10.37	12003
388,550	---	---	---	---	03/11/2010	---	NBGAM ETF GREECE & TURKEY 30	7.30	---	7.30	08/04/2015	---	---	---	---	---	---	---	---	---	---	---	---	---	7.06	8.90	12003

Exchange Traded Funds (ETFs)

Low Dispersion

14,000,000	4.15	---	---	---	23/04/2010	29/06/1999	4815	ALPHA REAL ESTATE SA(CR)	6.28	---	6.28	08/04/2015	---	---	---	---	---	---	33.80	2014	---	---	---	87,920.00	3.80	6.30	8637	
63,900,000	3.00	---	---	---	23/06/2003	04/11/2008	4816	ASTIR PALACE SA (CR)	2.45	---	2.45	08/04/2015	2.45	2.45	2.45	2.45	2.45	---	---	2014	100	1	245.00	156,555.00	2.10	3.60	5753	
90,902,904	0.800	---	---	---	09/08/2004	08/03/2006	4814	ATHENA SA (CR)	0.328	---	0.328	08/04/2015	---	---	---	---	---	---	---	---	2014	---	---	---	29,816.15	0.328	0.328	2357
191,660,320	0.300	---	---	---	20/07/2009	29/12/2010	4817	ATTICA HOLDINGS (CR)	0.468	0.43	# 0.466	08/04/2015	0.460	0.460	0.470	0.470	0.468	---	---	---	2014	2,612	9	1,222.52	89,697.03	0.416	0.589	5759
71,082,707	1.70	---	---	---	01/07/2010	21/11/2012	4820	HERACLES GEN.CEMENT CO. (CR)	1.18	---	1.18	08/04/2015	---	---	---	---	---	---	---	---	2014	---	---	---	83,877.59	1.15	1.40	2353
13,404,440	8.63	---	---	---	02/04/2001	06/03/1992	4822	IONIAN HOTELS SA (CR)	5.00	---	5.00	08/04/2015	---	---	---	---	---	---	---	---	2014	---	---	---	67,022.20	4.98	7.25	5753
2,760,000	11.83	8.52	8.5	---	30/06/2014	16/07/1990	4823	KARELIA TOBACCO CO. SA (CB)	255.00	---	255.00	08/04/2015	---	---	---	---	---	---	---	11.37	2014	---	---	---	703,800.00	198.05	298.00	3785
30,600,000	0.300	---	---	---	12/06/2008	04/03/2014	5059	KATHIMERINI SA (CR)	0.360	---	0.360	08/04/2015	---	---	---	---	---	---	---	---	2014	---	---	---	11,016.00	0.289	0.588	5557
14,074,000	3.00	---	---	---	02/03/2012	23/07/2009	5075	MIG REAL ESTATE (CR)	2.65	---	2.65	08/04/2015	---	---	---	---	---	---	---	15.12	2014	---	---	---	37,296.10	2.08	3.45	8671
106,980,050	2.25	---	---	---	25/07/2008	24/02/2014	5046	MINOAN LINES SA (CR)	2.00	---	2.00	08/04/2015	2.00	2.00	2.00	2.00	2.00	---	---	---	2014	5,904	2	11,808.00	213,960.10	1.43	2.00	5759
17,240,776	0.370	---	---	---	14/07/2005	30/09/2003	4827	PERSEUS SA (CR)	0.360	---	0.360	08/04/2015	---	---	---	---	---	---	---	1.74	2014	---	---	---	6,206.68	0.360	0.700	3577

Surveillance

33,301,715	0.320	---	---	---	27/06/2003	08/07/2009	4978	AEGEK (CR)	0.079	16.18	# 0.068	08/04/2015	0.079	0.079	0.079	0.079	0.079	---	---	---	2014	3,000	3	237.00	2,630.84	0.032	0.079	2357
13,000,000	1.00	---	---	---	01/08/2007	07/04/2000	5093	AKRITAS SA (CR)	0.037	---	0.037	08/04/2015	---	---	---	---	---	---	---	---	2014	---	---	---	481.00	0.036	0.125	2353
14,870,100	0.300	---	---	---	15/05/2008	26/09/2011	4844	ALPHA GRISSIN S.A. (CR)	0.032	---	0.032	08/04/2015	---	---	---	---	---	---	---	---	2014	---	---	---	475.84	0.032	0.048	9533
215,246,452	0.300	---	---	---	25/06/2001	24/09/2001	4446	ALTEC SA (CR)	0.021	---	0.021	08/04/2015	0.021	0.021	0.021	0.021	0.021	---	---	---	2014	7,767	3	163.11	4,520.18	0.017	0.030	9533
2,969,713	0.300	---	---	---	02/07/2008	28/02/2011	4958	ANEK LINES SA (PR, Issue '96)	0.120	---	0.120	08/04/2015	---	---	---	---	---	---	---	---	2014	---	---	---	13,552.92	0.110	0.133	5759
312,163	0.300	---	---	---	02/07/2008	28/02/2011	4959	ANEK LINES SA (PR, Issue '90)	1.30	---	1.30	08/04/2015	---	---	---	---	---	---	---	---	2014	---	---	---	13,552.92	1.15	1.30	5759
185,373,016	0.300	---	---	---	02/07/2008	28/02/2011	4957	ANEK LINES SA (CR)	0.069	15.00	# 0.060	08/04/2015	0.069	0.069	0.069	0.069	0.069	---	---	---	2014	1,398	5	96.46	13,552.92	0.051	0.093	5759
20,255,805	0.300	---	---	---	22/08/2006	02/08/2010	4881	AXON HOLDING SA (CR)	0.046	---	0.046	08/04/2015	---	---	---	---	---	---	---	---	2014	---	---	---	931.77	0.022	0.050	4533
14,173,104	0.300	---	---	---	11/08/2010	28/11/2013	5055	DIONIC (CR)	0.054	---	0.054	08/04/2015	---	---	---	---	---	---	---	---	2014	---	---	---	765.35	0.037	0.086	2797
15,878,748	0.480	---	---	---	10/07/2006	22/03/2004	5095	DOMKI KRITIS SA (CR)	0.272	---	0.272	08/04/2015	---	---	---	---	---	---	---	---	2014	---	---	---	4,319.02	0.216	0.340	2357
3,961,300	1.28	---	---	---	29/06/2004	03/08/2000	5080	DUROS SA (CR)	0.224	-20.00	€ 0.280	08/04/2015	0.224	0.224	0.224	0.224	0.224	---	---	---	2014	1,000	6	224.00	887.33	0.224	0.585	3763
7,085,888	1.59	---	---	---	02/07/1996	06/09/2010	4690	ELVIEMEK (CR)	3.97	---	3.97	08/04/2015	---	---	---	---	---	---	---	---	2014	---	---	---	28,130.98	3.97	3.97	8633
6,000,000	0.600	---	---	---	13/06/2008	08/04/2004	4886	EUROBROKERS S.A. (CR)	0.011	---	0.011	08/04/2015	---	---	---	---	---	---	---	---	2014	---	---	---	66.00	0.011	0.020	8534
21,820,410	0.800	---	---	---	22/05/2008	02/08/2011	4882	EUROMEDICA SA (CR)	0.430	---	0.430	08/04/2015	---	---	---	---	---	---	---	---	2014	---	---	---	9,382.78	0.320	0.430	4533
110,097,185	0.300	---	---	---	04/12/2013	5033	Forthnet (CR)	0.650	-9.72	€ 0.720	08/04/2015	0.650	0.650	0.650	0.650	0.650	---	---	---	---	2013	347	4	225.55	71,563.17	0.610	1.19	9535
77,376,446	0.340	---	---	---	23/05/2005	18/08/2011	5094	G.E. DIMITRIOU (CR)	0.020	-4.76	€ 0.021	08/04/2015	0.017	0.017	0.020	0.020	0.020	---	---	---	2014	1,846	3	36.70	1,547.53	0.014	0.030	3722
1,270,000	0.300	---	---	---	06/07/2007	06/02/2013	5007	GIRAKIAN PROFIL SA (CB)	0.295	---	0.295	08/04/2015	0.295	0.295	0.295	0.295	0.295	---	---	---	2014	177	2	52.22	374.65	0.247	0.350	1757
36,748,909	0.730	---	---	---	15/12/2005	13/12/2006	5083	HEL. SUGAR INDUSTRY SA (CB)	0.249	---	0.249	08/04/2015	---	---	---	---	---	---	---	---	2014	---	---	---	9,150.48	0.141	0.327	3577
179,707,771	0.300	---	---	---	27/06/2002	01/11/2011	4847	HELLAS ONLINE SA (CR)	0.563	---	0.563	08/04/2015	0.563	0.563	0.563	0.563	0.563	---	---	---	2014	940	2	529.22	101,175.48	0.516	0.563	9537
30,390,000	0.310	---	---	---	18/08/2008	29/12/2006	4447	HELLENIC FISHFARMING SA (CR)	0.044	7.32	# 0.041	08/04/2015	0.041	0.041	0.049	0.049	0.044	---	---	---	2014	4,100	6	180.10	1,337.16	0.026	0.078	3573
1,540,000	0.600	---	---	---	08/08/1994	19/09/2000	5058	J.BOUTARIS & SON HOLD. (PB)	0.006	---	0.006	08/04/2015	---	---	---	---	---	---	---	---	2014	---	---	---	563.19	0.005	0.007	3535

Number of Outstanding Securities	Nominal Value	Dividends [1] 2012 2013 2014	Date of Last Coupon Dividend [2]	Date of Last Coupon Right	Note	Shares	Closing price	% change	Previous closing price/date	Open price	Price min	Price max	Last price	Avg price	Last Bid [7]	Last Ask [7]	P/E after	Year	Volume	Trades	Transactions Value[8]	Company Mkt Value (thou. €)	Year low	Year high	Sector[4]		
25,179,640	0.600	---	---	---	08/08/1994	19/09/2000	5057	J.BOUTARIS & SON HOLD. SA (CB)	0.022	---	0.022	08/04/2015	0.022	0.022	0.022	0.022	---	---	---	2014	5,000	2	110.00	563.19	0.016	0.037	3535
7,125,216	0.650	---	---	---	01/07/2005	14/12/1999	4955	KRE.KA SA (CR)	0.171	---	0.171	08/04/2015	---	---	---	---	---	---	---	2014	---	---	---	1,218.41	0.101	0.225	3573
51,081,030	1.00	---	---	---	20/08/2007	03/09/2007	4912	LAVIPHARM SA (CR)	0.140	-6.67	€ 0.150	08/04/2015	0.140	0.140	0.140	0.140	---	---	---	2014	1,000	3	140.00	7,151.34	0.086	0.171	4577
4,419,616	1.58	---	---	---	21/07/2011	04/03/2015	4983	MEDICON S.A (CR)	0.379	---	0.379	08/04/2015	---	---	---	---	---	2.17	2014	---	---	---	1,675.03	0.245	0.453	4535	
255,459,600	0.300	---	---	---	26/06/2000	03/12/2010	4833	NEL SA (CR)	0.056	---	0.056	08/04/2015	---	---	---	---	---	---	---	2014	---	---	---	14,305.74	0.009	0.064	5759
20,231,328	0.600	---	---	---	15/07/2008	25/06/2004	4879	NIKAS SA (CR)	0.123	---	0.123	08/04/2015	---	---	---	---	---	---	---	2014	---	---	---	2,488.45	0.115	0.123	3577
63,697,153	1.34	---	---	---	08/07/2008	10/11/2008	5081	NIREFS SA (CR)	0.103	11.96	# 0.092	08/04/2015	0.096	0.096	0.105	0.104	0.103	---	---	2014	28,289	27	2,919.64	6,560.81	0.067	0.106	3573
14,967,940	0.500	---	---	---	21/05/2008	04/01/2008	4956	PASAL DEVELOPMENT S.A. (CR)	0.130	---	0.130	08/04/2015	---	---	---	---	---	---	---	2014	---	---	---	1,945.83	0.060	0.176	8633
40,946,303	0.360	---	---	---	18/07/2005	27/11/2007	5089	PC SYSTEMS SA (CR)	0.049	---	0.049	08/04/2015	---	---	---	---	---	---	---	2014	---	---	---	2,006.37	0.040	0.098	9533
18,750,000	0.300	---	---	---	02/07/2001	31/12/2012	4985	PEGASUS PUBLISHING S.A. (CR)	0.227	---	0.227	08/04/2015	---	---	---	---	---	---	---	2014	---	---	---	4,256.25	0.057	0.283	5557
24,319,250	0.300	---	---	---	09/07/2002	04/07/2007	5054	PROODEFTIKH SA (CR)	0.090	-10.00	€ 0.100	08/04/2015	0.090	0.090	0.090	0.090	---	---	3.15	2014	6,500	4	585.00	2,188.73	0.057	0.116	2357
65,326,268	0.530	---	---	---	04/07/2007	19/07/2006	4750	SATO SA (CR)	0.040	-13.04	€ 0.046	08/04/2015	0.040	0.040	0.040	0.040	---	---	---	2014	1,900	1	76.00	2,613.05	0.024	0.115	3726
36,235,184	1.00	---	---	---	01/07/2008	30/07/2012	4961	SELONDA AQUACULTURE SA (CR)	0.084	-15.15	€ 0.099	08/04/2015	0.084	0.084	0.084	0.084	---	---	0.93	2014	837	2	70.31	3,043.76	0.050	0.099	3573
7,914,480	0.300	---	---	---	23/06/2008	29/06/2011	4888	SFAKIANAKIS SA (CR)	2.44	19.61	# 2.04	08/04/2015	2.44	2.44	2.44	2.44	---	---	---	2014	10	2	24.40	19,311.33	1.12	2.58	5379
10,000,000	1.35	---	---	---	24/06/2008	10/05/2005	4887	SIDMA SA (CR)	0.370	---	0.370	08/04/2015	---	---	---	---	---	---	---	2014	---	---	---	3,700.00	0.271	0.370	1757
100,793,000	0.300	---	---	---	16/07/2009	05/08/2013	5008	TELETIPOS SA (CR)	0.022	---	0.022	08/04/2015	---	---	---	---	---	---	---	2014	---	---	---	2,217.45	0.019	0.108	5553
16,383,428	0.300	---	---	---	25/06/2002	21/06/2013	4997	VARVARESSOS SA (CB)	0.125	---	0.125	08/04/2015	---	---	---	---	---	2.96	2014	---	---	---	2,047.93	0.096	0.165	3763	
13,191,620	0.620	---	---	---	04/08/2010	09/09/2002	4977	YALCO - CONSTANTINOU SA (CB)	0.106	---	0.106	08/04/2015	---	---	---	---	---	---	---	2014	---	---	---	1,398.31	0.079	0.189	3722

Under Deletion

81,644,555	0.300	---	---	---	01/07/2008	02/09/2002	5090	ATTI - KAT SA (CR)	0.008	-20.00	€ 0.010	08/04/2015	0.008	0.008	0.008	0.008	---	---	---	2014	50,262	15	402.10	653.16	0.008	0.037	2357
1,130,180	0.440	---	---	---	20/06/2003	02/07/2014	5092	COMPUCON SA (CR)	0.006	---	0.006	08/04/2015	---	---	---	---	---	---	---	2014	---	---	---	6.78	0.005	0.010	9537
9,567,289	0.300	---	---	---	01/07/2004	19/11/2007	5062	MARAC ELECTRONICS (CR)	0.298	---	0.298	08/04/2015	---	---	---	---	---	---	---	2014	---	---	---	2,851.05	0.298	0.298	9578
766,000	1.50	---	---	---	01/07/2004	11/12/2012	4937	TRIA ALFA SA (CR)	1.80	---	1.80	08/04/2015	---	---	---	---	---	---	---	2014	---	---	---	1,709.55	1.80	2.29	3763
245,000	1.50	---	---	---	19/07/2010	11/12/2012	4938	TRIA ALFA SA (PR)	1.35	---	1.35	08/04/2015	---	---	---	---	---	---	---	2014	---	---	---	1,709.55	1.35	1.35	3763
3,229,566	0.320	---	---	---	22/06/2005	23/09/1999	5091	VARANGIS AVEPE S.A. (CR)	0.520	---	0.520	08/04/2015	---	---	---	---	---	---	---	2014	---	---	---	1,679.37	0.520	0.520	3726

Suspension Status

5,000,000	0.400	---	---	---	03/06/2009	01/09/2014	5087	ALCO HELLAS SA (CR)	0.180	---	0.180	08/04/2015	---	---	---	---	---	---	---	---	---	---	---	900.00	0.130	0.307	1753
5,025,000	0.300	---	---	---	05/07/2005	14/03/2002	5023	ALSINCO S.A (CR)	0.043	---	0.043	08/04/2015	---	---	---	---	---	---	---	---	---	---	---	216.08	0.043	0.043	3763
1,750,955,549	0.600	---	---	---	19/05/2008	08/12/2011	4911	ATE (CR)	0.155	---	0.155	08/04/2015	---	---	---	---	---	---	---	---	---	---	---	271,398.11	0.155	0.155	8355
21,382,067	0.300	---	---	---	02/10/2006	15/02/2006	4628	ATERMON (CR)	0.120	---	0.120	08/04/2015	---	---	---	---	---	---	---	---	---	---	---	2,565.85	0.120	0.120	5555
105,423,498	0.510	---	---	---	01/07/2004	28/12/2005	4920	AVENIR S.A. (CR)	0.046	---	0.046	08/04/2015	---	---	---	---	---	---	---	---	---	---	---	4,849.48	0.046	0.046	5752
33,930,000	0.300	---	---	---	03/07/2006	30/05/2001	4865	BABIS VOVOS SA (CR)	0.304	---	0.304	08/04/2015	---	---	---	---	---	---	---	---	---	---	---	10,314.72	0.304	0.304	8633
20,121,710	1.21	---	---	---	27/07/1992	12/03/2003	5002	BALKAN R.E. (CR)	0.190	---	0.190	08/04/2015	---	---	---	---	---	---	---	---	---	---	---	3,823.12	0.190	0.190	8633
17,579,754	4.16	---	---	---	18/08/2006	02/08/2010	5086	BIOTER SA (CR)	0.134	---	0.134	08/04/2015	---	---	---	---	---	---	---	---	---	---	---	2,355.69	0.128	0.250	2357
21,920,570	0.300	---	---	---	03/07/2007	13/12/1999	4702	CARDASSILARIS SA (CR)	0.140	---	0.140	08/04/2015	---	---	---	---	---	---	---	---	---	---	---	3,068.88	0.140	0.140	3577
54,547,634	0.500	---	---	---	25/04/2005	21/01/2009	4860	CH.TEGOPOULOS PUBL. SA (CR)	0.038	---	0.038	08/04/2015	---	---	---	---	---	---	---	---	---	---	---	2,072.81	0.038	0.038	5557

Number of Outstanding Securities	Nominal Value	Dividends [1]			Date of Last Coupon		Note	Shares	Closing price	% change	Previous closing price/date	Open price	Price min	Price max	Last price	Avg price	Last Bid [7]	Last Ask [7]	P/E after	Year	Volume	Trades	Transactions Value[8]	Company Mkt Value (thou. €)	Year low	Year high	Sector[4]
30,159,583	0.470	---	---	---	26/06/2008	29/12/2010	5047	DIAS A/C (CR)	0.050	---	0.050	08/04/2015	---	---	---	---	---	---	---	---	---	---	---	1,507.98	0.050	0.050	3573
7,847,611	1.20	---	---	---	01/08/2007	28/09/2011	4939	EDRASIS - C. PSALLIDAS SA (CR)	0.150	---	0.150	08/04/2015	---	---	---	---	---	---	---	---	---	---	---	1,177.14	0.150	0.150	2357
5,750,000	0.300	---	---	---	12/12/2008	12/12/2011	4929	ELECTRONIKI ATHINON SA (CR)	0.480	---	0.480	08/04/2015	---	---	---	---	---	---	---	---	---	---	---	2,760.00	0.480	0.480	5375
24,605,397	0.400	---	---	---	29/06/1995	27/05/2002	4651	EMPORIKOS DESMOS SA (CR)	0.080	---	0.080	08/04/2015	---	---	---	---	---	---	---	---	---	---	---	2,134.04	0.080	0.080	3722
1,182,903	0.400	---	---	---	01/07/1996	27/05/2002	4652	EMPORIKOS DESMOS SA (PR)	0.140	---	0.140	08/04/2015	---	---	---	---	---	---	---	---	---	---	---	2,134.04	0.140	0.140	3722
7,326,648	1.00	---	---	---	26/07/2006	24/07/2001	4921	FINTEXPORT SA (CR)	0.328	---	0.328	08/04/2015	---	---	---	---	---	---	---	---	---	---	---	2,403.14	0.328	0.328	3763
13,692,227	1.47	---	---	---	07/07/2006	08/10/1999	5049	HELLENIC FABRICS SA (CR)	0.117	---	0.117	08/04/2015	---	---	---	---	---	---	---	---	---	---	---	1,601.99	0.117	0.117	3763
24,619,524	0.500	---	---	---	10/10/1986	30/12/2002	4914	KERAMIA-ALLATINI (CR)	0.088	---	0.088	08/04/2015	---	---	---	---	---	---	---	---	---	---	---	2,166.52	0.088	0.088	8633
7,840,373	1.20	---	---	---	18/07/2002	05/03/2003	4765	KLONATEX SA (PR)	0.080	---	0.080	08/04/2015	---	---	---	---	---	---	---	---	---	---	---	1,453.75	0.080	0.080	3763
20,663,047	1.20	---	---	---	21/08/2000	05/03/2003	4764	KLONATEX SA (CR)	0.040	---	0.040	08/04/2015	---	---	---	---	---	---	---	---	---	---	---	1,453.75	0.040	0.040	3763
17,544,600	0.600	---	---	---	03/07/2000	01/08/2000	4868	KOYMBAS SYNERGY GROUP (CR)	0.132	---	0.132	08/04/2015	---	---	---	---	---	---	---	---	---	---	---	2,315.89	0.132	0.132	8775
15,015,000	1.60	---	---	---	01/07/2002	02/02/2000	4603	MAXIM C.M. PERTSINIDIS SA (CB)	0.100	---	0.100	08/04/2015	---	---	---	---	---	---	---	---	---	---	---	1,501.50	0.100	0.100	3763
66,937,526	0.700	---	---	---	13/08/2010	21/05/2003	5003	MICHANIKI SA (CR)	0.100	---	0.100	08/04/2015	---	---	---	---	---	---	---	---	---	---	---	9,186.78	0.100	0.100	2357
25,968,987	0.700	---	---	---	13/08/2010	21/05/2003	5004	MICHANIKI SA (PR)	0.096	---	0.096	08/04/2015	---	---	---	---	---	---	---	---	---	---	---	9,186.78	0.096	0.096	2357
13,555,100	1.00	---	---	---	08/07/2005		4576	MICROLAND COMPUTERS SA (CR)	0.640	---	0.640	08/04/2015	---	---	---	---	---	---	---	---	---	---	---	8,675.26	0.640	0.640	5379
23,463,874	0.800	---	---	---	23/05/2003	21/12/1999	4918	NEORION SA (CR)	0.125	---	0.125	08/04/2015	---	---	---	---	---	---	---	---	---	---	---	2,932.98	0.125	0.125	2753
42,501,273	0.300	---	---	---	26/06/2007	10/08/2009	4993	NUTRIART (CR)	0.049	---	0.049	08/04/2015	---	---	---	---	---	---	---	---	---	---	---	2,082.56	0.049	0.049	3577
20,210,127	1.53	---	---	---	27/06/1997	20/03/2000	5061	PARNASSOS ENTERP. (CR)	0.070	---	0.070	08/04/2015	---	---	---	---	---	---	---	---	---	---	---	1,414.71	0.070	0.070	8775
25,583,146	0.300	---	---	---	25/06/2001	03/12/2008	4723	PETZETAKIS SA (CR)	0.260	---	0.260	08/04/2015	---	---	---	---	---	---	---	---	---	---	---	6,651.62	0.260	0.260	1357
9,550,386	0.500	---	---	---	01/07/1997	12/06/2008	4626	PRAXITELIO SA (CR)	0.390	---	0.390	08/04/2015	---	---	---	---	---	---	---	---	---	---	---	4,430.09	0.390	0.390	4533
1,306,368	0.500	---	---	---	01/07/1997	12/06/2008	4627	PRAXITELIO SA (PR)	0.540	---	0.540	08/04/2015	---	---	---	---	---	---	---	---	---	---	---	4,430.09	0.540	0.540	4533
62,683,822	0.300	---	---	---	27/05/2008	09/01/2006	4830	PROTON BANK S.A. (CR)	0.180	---	0.180	08/04/2015	---	---	---	---	---	---	---	---	---	---	---	11,283.09	0.180	0.180	8355
25,667,143	0.320	---	---	---	03/07/2000	18/12/2007	4548	SAOS (CR)	1.56	---	1.56	08/04/2015	---	---	---	---	---	---	---	---	---	---	---	40,040.74	0.780	0.780	2773
26,408,040	0.300	---	---	---	01/07/1997	26/05/1999	4464	SHEET STEEL SA (CR)	0.120	---	0.120	08/04/2015	---	---	---	---	---	---	---	---	---	---	---	3,168.96	0.120	0.120	1757
60,221,300	0.400	---	---	---	01/07/2002	01/11/2010	5022	SHELMAN SA (CR)	0.080	---	0.080	08/04/2015	---	---	---	---	---	---	---	---	---	---	---	4,817.70	0.080	0.080	2353
29,060,950	0.340	---	---	---	20/08/2007	24/10/2001	5088	SPIDER METAL INDUSTRY SA (CR)	0.008	---	0.008	08/04/2015	---	---	---	---	---	---	---	---	---	---	---	232.49	0.005	0.008	2757
26,262,660	0.900	---	---	---	01/07/2008	24/02/2011	4954	SPRIDER STORES (CR)	0.031	---	0.031	08/04/2015	---	---	---	---	---	---	---	---	---	---	---	814.14	0.031	0.031	5371
144,688,060	0.600	---	---	---	21/04/2008	10/03/2010	4982	T BANK (CR)	0.048	---	0.048	08/04/2015	---	---	---	---	---	---	---	---	---	---	---	6,945.03	0.048	0.048	8355
6,523,780	0.530	---	---	---	01/07/2002	06/03/2001	4971	TECHNICAL PUBLICATIONS SA (CR)	0.006	---	0.006	08/04/2015	---	---	---	---	---	---	---	---	---	---	---	39.14	0.006	0.006	5557
13,920,000	0.320	---	---	---	19/11/2001	01/08/2000	4726	TEXAPRET SA (CR)	0.080	---	0.080	08/04/2015	---	---	---	---	---	---	---	---	---	---	---	1,113.60	0.080	0.080	3763
510,840	1.00	---	---	---	15/07/2008	21/11/2013	5036	TROPEA HOLDING (CR)	2.00	---	2.00	08/04/2015	---	---	---	---	---	---	---	---	---	---	---	1,021.68	2.00	2.00	3722
284,465,964	3.70	---	---	---	20/06/2008	15/06/2009	4913	TT HELLENIC POSTBANK (CR)	0.168	---	0.168	08/04/2015	---	---	---	---	---	---	---	---	---	---	---	47,790.28	0.168	0.168	8355
89,616,200	0.300	---	---	---	21/08/2000	28/06/2007	4616	UNITED TEXTILES (CR)	0.050	---	0.050	08/04/2015	---	---	---	---	---	---	---	---	---	---	---	4,480.81	0.050	0.050	3763
71,683,906	0.400	---	---	---	15/06/2005	05/02/2008	4953	XATZIOANNOU (CR)	0.026	---	0.026	08/04/2015	---	---	---	---	---	---	---	---	---	---	---	1,863.78	0.026	0.026	3763

Shares' Notes

Code	Note text
()	- Adjusted dividends.
*	- Last adjusted closing price.
[1]	- Net dividends.
[2]	- The "Date of Last Coupon" for New listings refers to the date company's stocks started to trade in Athex
[3]	- The Company Market Value is referred to the number of outstanding shares
[4]	- Sectors codification can be found in Appendix A
[5]	- The Market Value refers to the total number of shares listed (including their several classes) in the exchange by the company.
[6]	- P/E greater than 100
[7]	- Last view of the Order Book before the end of the trading session
[8]	- All Blocks Methods' Transactions Value are included.
4446	- Transfer to the "Under Supervision" Category as of 20/10/2008.
4447	- Transfer to the "Under Supervision" Category as of 21/10/2008.
4464	- Suspension of trading as of 1/12/2008.
4548	- Suspension of trading as of 1/4/2009.
4576	- Suspension of trading as of 14/7/2009.
4603	- Suspension of trading as of 1/12/2009.
4616	- Suspension of trading as of 25/2/2010.
4626	- Suspension of trading as of 1/4/2010.
4627	- Suspension of trading as of 1/4/2010.
4628	- Suspension of trading as of 1/4/2010.
4651	- Suspension of trading as of 1/6/2010.
4652	- Suspension of trading as of 1/6/2010.
4690	- Transfer to Surveillance category as of 4/4/2006.
4702	- Suspension of trading as of 1/12/2010.
4723	- Suspension of trading as of 31/1/2011.
4726	- Suspension of trading as of 1/3/2011.
4750	- Transfer to the "Under Surveillance Category" from 8/4/2011.
4764	- Suspension of trading as of 20/5/2011.
4765	- Suspension of trading as of 20/5/2011.
4795	- The final gross (pre-tax) dividend is € 0.30 per share and subject to withholding tax on the full dividend amount, i.e. 0,45 per share, for those shareholders liable to withholding tax, in accordance with the applicable tax law provisions.
4814	- Transfer to the Low Dispersion Category as of 30/5/2011.
4815	- Transfer to the Low Dispersion Category as of 30/5/2011.
4816	- Transfer to the Low Dispersion Category as of 30/5/2011.
4817	- Transfer to the Low Dispersion Category as of 30/5/2011.
4820	- Transfer to the Low Dispersion category as of 18/4/2008.
4822	- Transfer to the Low Dispersion category as of 30/5/2011.
4823	- Transfer to the Low Dispersion category as of 4/4/2006.
4827	- Transfer to the Low Dispersion category as of 5/5/2010.
4830	- Suspension of trading as of 10/10/2011.
4833	- Transfer to Surveillance category from 6/5/2010.
4844	- Transfer to the Surveillance category from 8/4/2011.
4847	- Transfer to the Surveillance Category as of 3/7/2009.
4857	- The 793,906,274 new (CR) shares, resulting from the recent share capital increase through a rights issue, are not yet admitted to trading on the ATHEX.
4860	- Suspension of trading as of 30/3/2012.
4865	- Suspension of trading as of 2/4/2012.
4868	- Suspension of trading as of 2/4/2012.
4879	- Transfer to the Surveillance Category as of 10/4/2012.
4881	- Transfer to the Surveillance Category as of 10/4/2012.
4882	- Transfer to the Surveillance Category as of 10/4/2012.
4886	- Transfer to the Surveillance Category as of 10/4/2012.
4887	- Transfer to the Surveillance Category as of 10/4/2012.

Shares' Notes

Code	Note text
4888	- Transfer to the Surveillance Category as of 10/4/2012.
4911	- Lift of suspension from 30/7/2012.
4912	- Transfer to the Surveillance Category as of 31/7/2012.
4913	- Suspension of trading as of 30/8/2012.
4914	- Suspension of trading as of 31/8/2012.
4918	- Suspension of trading as of 31/8/2012.
4920	- Suspension of trading as of 31/8/2012.
4921	- Suspension of trading as of 31/8/2012.
4929	- Suspension of trading as of 1/10/2012.
4937	- Transfer to the UNDER DELETION category as of 30/11/2012.
4938	- Transfer to the UNDER DELETION category as of 30/11/2012.
4939	- Suspension of trading as of 30/11/2012.
4953	- Suspension of trading as of 2/4/2013.
4954	- Suspension of trading as of 2/4/2013.
4955	- Transfer to the Surveillance Category as from 5/4/2013.
4956	- Transfer to the Surveillance Category as from 5/4/2013.
4957	- Transfer to the Surveillance Category as from 5/4/2013.
4958	- Transfer to the Surveillance Category as from 5/4/2013.
4959	- Transfer to the Surveillance Category as from 5/4/2013.
4961	- Transfer to the Surveillance Category as from 5/4/2013.
4971	- Suspension of trading as of 3/6/2013.
4977	- Transfer to the "Under Surveillance Category" from 11/6/2013.
4978	- Transfer to the Under Supervision Category as of 11/6/2013.
4982	- Suspension of trading as of 1/12/2011.
4983	- Transfer to the Surveillance Category as of 5/4/2013.
4985	- Transfer to the "Under Surveillance Category" from 8/4/2011.
4993	- Suspension of trading as of 21/6/2013 (15:18).
4997	- Transfer to the Under Supervision Category as of 21/12/2009. - The 6,870,053 new (CB) shares, resulting from the recent share capital increase through a rights issue, are not yet admitted to trading on the ATHEX.
5002	- Suspension of trading as of 30/08/2013.
5003	- Suspension of trading as of 30/08/2013.
5004	- Suspension of trading as of 30/08/2013.
5007	- Transfer to the Surveillance category, as of 11/10/2013.
5008	- Transfer to the Surveillance Category from 8/4/2011.
5022	- Suspension of trading as of 2/12/2013.
5023	- Suspension of trading as of 2/12/2013.
5031	- The 612,300 new (CR) shares, resulting from the recent share capital increase through a rights issue, are not yet admitted to trading on the ATHEX.
5033	- Transfer to the Surveillance Category as of 25/11/2011. The 97,144,575 new (CR) shares, resulting from the recent share capital increase through a rights issue, are not yet admitted to trading on the ATHEX.
5036	- The company's share is under suspension of trading as of 2/4/2012. During suspension, the company proceeded and concluded a share reverse split, according to which - after the conclusion of the corporate action - the total number of the company's shares, as well as, the last closing price of 30/03/2012 were adjusted.
5046	- Transfer to the Low Dispersion category as of 8/4/2011.
5047	- Suspension of trading as of 27/3/2014.
5049	- Under suspension of trading as of 1/4/2014.
5054	- Transfer to the Surveillance Category as of 10/4/2014.
5055	- Transfer to the Surveillance Category as of 10/4/2014.
5057	- Transfer to the Surveillance Category as of 29/12/2011.
5058	- Transfer to the Surveillance Category as of 29/12/2011.
5059	- Transfer to the Low Dispersion category as of 2/6/2014.
5061	- Suspension of trading as of 2/6/2014.
5062	- Transfer to the UNDER DELETION category as of 4/6/2014.
5075	- Transfer to the "Low Dispersion" Category as of 31/10/2014.
5080	- Suspension of trading as of 6/9/2011.
5081	- Transfer to the Surveillance category, as of 19/12/2014.

Shares' Notes

Code	Note text
5083	- Transfer to the Surveillance Category as of 06/03/2015.
5086	- Suspension of trading as of 1/4/2015.
5087	- Suspension of trading as of 1/4/2015.
5088	- Suspension of trading as of 1/4/2015.
5089	- Transfer to the Surveillance Category as of 8/4/2015.
5090	- Transfer to the UNDER DELETION category as of 8/4/2015.
5091	- Transfer to the UNDER DELETION category as of 8/4/2015.
5092	- Transfer to the UNDER DELETION category as of 8/4/2015.
5093	- Transfer to the Surveillance Category as of 8/4/2015.
5094	- Transfer to the Surveillance Category as of 8/4/2015.
5095	- Transfer to the Surveillance Category as from 9/4/2015.

Securities Blocks Details

Securities	Block Volume	Price	Block Trade Value	Time of approval	Note
GRIVALIA PROPERTIES (CR)	73,560	7.23	531,838.80	10:44:26	20
FRIGOGLASS SA (CR)	150,000	1.74	261,000.00	12:29:36	20
BANK OF CYPRUS (CR)	274,452	0.206	56,537.11	15:13:46	18

Blocks Notes

- 9 - Method 6-1 / Special Fees
- 10 - Method 6-1 / Special Fees, SDS
- 14 - Method 6-3 / Settlement, Incomplete Buy and Sell
- 18 - Method 6-2 / SPOT 1
- 19 - Method 6-2 / SPOT 2
- 20 - Method 6-1 and Method 6-1 Same Day Settlement
- 21 - Other Pre-agreed

Shares Rights Details

Occured date	Exercise from	Exercise until	Trading until	Rights	Price min	Price max	Closing price	Last Bid	Last Ask	Volume	Trades	Transactions Value
--------------	---------------	----------------	---------------	--------	-----------	-----------	---------------	----------	----------	--------	--------	--------------------

No Rights Transactions.

Shares Short Selling

Securities	Transactions Value	Transactions Volume	% of Total Volume	Short Covering Trans. Value	Short Covering Volume	% of Total Volume
------------	-----------------------	------------------------	----------------------	--------------------------------	--------------------------	----------------------

No Short Sales Transactions.

Short Selling Notes

[1] - The Hellenic Capital Markets Commission (HCMC) has decided to prohibit the short selling only in relation to shares of credit institutions admitted to trading on the Athens Exchange and comprising the FTSE/ATHEX - CSE Banking Index, for a period of three(3) months and more specifically from February1, 2013 until April 30, 2013.

Shares Forced Sales

Securities	Transaction s Volume	Number of Trades	Transactions Value	Note
------------	-------------------------	---------------------	-----------------------	------

No Forced Transactions.

Forced Sales Notes

- 1 - Normal Forced Sale.
- 2 - Forced Sales of Fixed Registered Shares.
- 3 - Forced Sales of Remaining Stock Fractions.

Forced Sales Registered Shares

Securities	Start Date	End Date	Initial Volume	Remaining Volume	Date	Avg price (day)	Avg price (period)	Number of Trades	Transactions Volume	Transactions Value
------------	------------	----------	----------------	------------------	------	-----------------	--------------------	------------------	---------------------	--------------------

No Fixed Registered Shares Forced Sales.

Forced Sales Notes

According to Decision 1/380/04.05.2008 of the Hellenic Republic Capital Market Commission, the certificated registered shares that have not been deposited to the issuer for dematerialisation, will be auctioned in the Athens Exchange by the supervising issuer. Forced sales procedure is held according to Article 99A of the Athens Exchange Rulebook. The average price of the period is calculated by dividing the Total transactions value by the Total volume and includes all the transactions made until the current date.

Exchange Traded Funds (ETFs) Characteristics

	Transactions Date (T)	Creation / Redemption	Units (T-1)	New Units (T-1)	Redemption Units (T-1)	Units (T) [1]	Fund Assets [2]	Net Unit Price	Dividend per	Dividend Date
NBGAM ETF ΓΔ Χ.Α.	09/04/2015	25,000	294,878	---	---	294,878	2,525,209.00	8.5636	---	27/10/2011
ALPHA ETF FTSE Athex Large Cap	09/04/2015	50,000	5,848,618	---	---	5,848,618	13,611,900.00	2.3274	0.05	01/07/2013
NBGAM ETF GREECE & TURKEY 30	09/04/2015	25,000	388,550	---	---	388,550	2,843,914.00	7.3193	---	27/10/2011

ETFs Notes

[1] - Units (T) = Units (T-1) + New Units (T-1) - Redemption Units (T-1)

[2] - The Creation / Redemption Units of T-1 are included.

Corporate Bonds

Num Listed Bonds	Nominal price	Issue price	Today's Rate	Exp. Date	Duration (years)	Note	Coupon attached		Trading	Corporate Bonds	Price min	Price max	Closing price	Previous closing		Volume	Transactions Value	Last order			ear min	Year max
							Common	Preferred						price/date	price			Buy / Sell	Date			
1,794,284	12.49	9.77	5.03	12/07/2015	8	---	---	---	1	NIREUS S.A. (Convertible to CR shares)	---	---	---	12.0000	29/01/2014	---	---	11.0000	B	17/11/2014	12.0000	12.0000
212,801,311	1.00	1.00	6.30	29/07/2020	7	---	7	---	1	MARFIN INVESTMENT GROUP S.A. SERIES B (BOND)	---	---	---	0.8500	23/08/2013	---	---	1.0000	B	28/11/2014	0.8500	0.8500
163,991,598	1.00	1.00	7.00	29/07/2019	6	---	7	---	1	MARFIN INVESTMENT GROUP S.A. SERIES A (BOND)	---	---	---	1.0000	23/08/2013	---	---	1.0000	B	28/11/2014	1.0000	1.0000

Corporate Bonds Notes

Transactions Volume = (Pieces) * (Nominal Price). Transactions Value = (Pieces) * (Nominal Price) * (price %) + (Accrued interest).

The price of a Bond is stated as a percentage (%) of Bond's Nominal Price.

Nominal Price in Euros (€), except if it is noted differently.

Government Bonds

Number Listed Bonds	Nominal price	Today's Rate	Accrued Interest Calc	Exp. Date [1]	Duration (years)	Note	Coupons Date	Curr. coupon value	Trading Unit	Government Bonds	Price min	Price max	Closing price	Previous closing price/date	Volume	Transactions Value	Price	Last order Buy / Sell	Date
1,792,455,803	1.00	4.30	Actual/Actual	24/02/2023	11	---	24/02	4.30	1	GGB-FXD-240223-11Y-2.000-1.00	---	---	---	10.0000 28/01/2015	---	---	---	---	---
1,771,485,249	1.00	4.30	Actual/Actual	24/02/2024	12	---	24/02	4.30	1	GGB-FXD-240224-12Y-2.000-1.00	---	---	---	10.0000 28/01/2015	---	---	---	---	---
1,744,316,583	1.00	4.30	Actual/Actual	24/02/2025	13	---	24/02	4.30	1	GGB-FXD-240225-13Y-2.000-1.00	---	---	---	10.0000 28/01/2015	---	---	---	---	---
1,498,761,836	1.00	4.30	Actual/Actual	24/02/2026	14	---	24/02	4.30	1	GGB-FXD-240226-14Y-2.000-1.00	---	---	---	10.0000 28/01/2015	---	---	---	---	---
1,469,952,920	1.00	4.30	Actual/Actual	24/02/2027	15	---	24/02	4.30	1	GGB-FXD-240227-15Y-2.000-1.00	---	---	---	10.0000 28/01/2015	---	---	---	---	---
1,525,434,082	1.00	4.30	Actual/Actual	24/02/2028	16	---	24/02	4.30	1	GGB-FXD-240228-16Y-2.000-1.00	---	---	---	10.0000 28/01/2015	---	---	---	---	---
1,503,860,546	1.00	4.30	Actual/Actual	24/02/2029	17	---	24/02	4.30	1	GGB-FXD-240229-17Y-2.000-1.00	---	---	---	10.0000 28/01/2015	---	---	---	---	---
1,435,418,132	1.00	4.30	Actual/Actual	24/02/2030	18	---	24/02	4.30	1	GGB-FXD-240230-18Y-2.000-1.00	---	---	---	10.0000 28/01/2015	---	---	---	---	---
1,368,045,727	1.00	4.30	Actual/Actual	24/02/2031	19	---	24/02	4.30	1	GGB-FXD-240231-19Y-2.000-1.00	---	---	---	10.0000 28/01/2015	---	---	---	---	---
1,373,758,194	1.00	4.30	Actual/Actual	24/02/2032	20	---	24/02	4.30	1	GGB-FXD-240232-20Y-2.000-1.00	---	---	---	10.0000 28/01/2015	---	---	---	---	---
1,452,639,893	1.00	4.30	Actual/Actual	24/02/2033	21	---	24/02	4.30	1	GGB-FXD-240233-21Y-2.000-1.00	---	---	---	10.0000 28/01/2015	---	---	---	---	---
1,410,344,954	1.00	4.30	Actual/Actual	24/02/2034	22	---	24/02	4.30	1	GGB-FXD-240234-22Y-2.000-1.00	---	---	---	10.0000 28/01/2015	---	---	---	---	---
1,444,202,190	1.00	4.30	Actual/Actual	24/02/2035	23	---	24/02	4.30	1	GGB-FXD-240235-23Y-2.000-1.00	---	---	---	10.0000 28/01/2015	---	---	---	---	---
1,505,138,031	1.00	4.30	Actual/Actual	24/02/2036	24	---	24/02	4.30	1	GGB-FXD-240236-24Y-2.000-1.00	---	---	---	10.0000 28/01/2015	---	---	---	---	---
1,396,254,095	1.00	4.30	Actual/Actual	24/02/2037	25	---	24/02	4.30	1	GGB-FXD-240237-25Y-2.000-1.00	---	---	---	10.0000 28/01/2015	---	---	---	---	---
1,382,167,704	1.00	4.30	Actual/Actual	24/02/2038	26	---	24/02	4.30	1	GGB-FXD-240238-26Y-2.000-1.00	---	---	---	10.0000 28/01/2015	---	---	---	---	---
1,337,331,257	1.00	4.30	Actual/Actual	24/02/2039	27	---	24/02	4.30	1	GGB-FXD-240239-27Y-2.000-1.00	---	---	---	10.0000 28/01/2015	---	---	---	---	---
1,371,908,706	1.00	4.30	Actual/Actual	24/02/2040	28	---	24/02	4.30	1	GGB-FXD-240240-28Y-2.000-1.00	---	---	---	10.0000 28/01/2015	---	---	---	---	---
1,360,659,778	1.00	4.30	Actual/Actual	24/02/2041	29	---	24/02	4.30	1	GGB-FXD-240241-29Y-2.000-1.00	---	---	---	10.0000 28/01/2015	---	---	---	---	---
1,432,747,403	1.00	4.30	Actual/Actual	24/02/2042	30	---	24/02	4.30	1	GGB-FXD-240242-30Y-2.000-1.00	---	---	---	10.0000 28/01/2015	---	---	---	---	---
742,153	1,000.00	0.93	FLR Actual/360	10/08/2019	5	---	10/02 - 10/08	---	1	GGB-FLT-100819-05Y-0.934-1.000	---	---	---	---	---	---	---	---	---
4,030,827	1,000.00	4.75	Actual/Actual	17/04/2019	5	---	17/04	4.75	1	GGB-FXD-170419-05Y-4.750-1.000	---	---	---	---	---	---	---	---	---
2,089,066	1,000.00	3.38	Actual/Actual	17/07/2017	3	---	17/07	3.38	1	GGB-FXD-170717-03Y-3.375-1.000	---	---	---	---	---	---	---	---	---

Government Bonds Notes

Transactions Volume = (Pieces) * (Nominal Price). Transactions Value = (Pieces) * (Nominal Price) * (price %) + (Accrued interest).

The Value of current coupon for the issues with NV 0.01 euro refers to NV 100 euros

FLR: Floating Interest Rate.

[1] - The Expiration Date of the interest bearing period and the Date for coupon payment.

Treasury Bills & Zero Coupon Government Bonds

Issue Date	13-Week Maturity									26-Week Maturity								52-Week Maturity										
	Exp. Date	Initial Rate	Num Listed Bonds	Nominal price	Issue price	Last Trade Price	Last Trade Date	Volume Traded	Note	Exp. Date	Initial Rate	Num Listed Bonds	Nominal price	Issue price	Last Trade Price	Last Trade Date	Volume Traded	Note	Exp. Date	Initial Rate	Num Listed Bonds	Nominal price	Issue price	Last Trade Price	Last Trade Date	Volume Traded	Note	
	#Type!	#Type!	#Type!	#Type!	#Type!	#Type!	#Type!	#Type!	#Type!	#Type!	#Type!	#Type!	#Type!	#Type!	#Type!	#Type!	#Type!	#Type!	#Type!	#Type!	#Type!	#Type!	#Type!	#Type!	#Type!	#Type!	#Type!	#Type!

Bonds in Circulation	Currency / Min nominal traded Value	Coupons Payment Date	Current Coupon Value	Note	Coupon Attached	Trading Unit	Issue Date	Duration (years)	Today's Interest	A.I.C in days	Bonds	Last price of previous days	Last Outcry in Cash (euro) Price	Buy / Sell	Date	Trades in Pieces	Life min	Life Max	
Bonds of International Organizations																			
1,000,000	EUR / 1000	21/07	---	---	9	1	21/07/2006	10	5.0 FLR	360	EUROPEAN INVESTMENT BANK BOND	97.50	16/04/2007	---	---	---	---	---	
Corporate Bonds in Foreign Currency and Euro																			
103,746	GBP / 10	01/12	0.25	---	56	1	01/12/1930	98	2.5	360	National Mortgage Bank	2.27	05/02/1996	2.27	S	05/02/1996	---	2.27	2.27
0	GBP / 10	01/12	0.25	---	58	1	01/12/1928	100	2.5	360	National Mortgage Bank	---	---	---	---	---	---	---	---

Government Bonds Notes

A.I.C: Accrued Interest Calculation base.

FLR: Floating Interest Rate.

The minimum tradeable Nominal Value for all Demeterialised Government Titles is 100 Euros.

State Banks Bonds (one year maturity)

Number Listed Bonds	Nominal value	Initial Rate	Current Rate	Annual Interest	Issue Date	Note	State Banks Bonds	Trading Unit	Yearly Renewals	Last Outcry in Cash (euro)		Volume
										Price	Buy / Sell	
2,446	1,182.96	4.90	2.47	29.69	31/05/2008	---	H.I.D.B.	1	7	---	---	---

Bonds Notes

The annual renewal of H.I.D.B. Bonds is free of taxes (net rate).
For Bonds issue until 31/03/2015 the accrued interest is capitalized.

Athex & ATHEXClear Members List

Member Name	Stock Market			Derivatives Market		ATHEXClear Member					
	Address	Phone	Fax	Market Member	Remote Member	Market Maker	Proprietary	Market Maker	General Clearing	Direct Clearing	Non Clearing
A. SARRIS SECURITIES S.A.				a							
6, DRAGATSANIOU STR. ATHINA	(210)-3367700	(210)-3312324									
ALPHA FINANCE INVESTMENT SERVICES S.A.				a		a		a		a	
5, MERLIN STR. ATHINA	(210)-3677400	(210)-3311193									
ALPHA BANK A.E.									a		
40, STADIOU STR ATHINA	(210)-3265546	(210)-3265811									
	(210)-3260000	(210)-3264116									
ARGUS STOCKBROKERS LTD				a	a		a				
12-14, KENNEDY AVE, S. 303 NICOSIA	(+35722)-22717000	(+35722)-22717070									
ATLANTIC SECURITIES LIMITED				a	a						
37, PRODROMOU STR. NICOSIA	(+35722)-445400	(+35722)-661914									
ATLAS SECURITIES S.A.				a			a				a
14 - 16, VERNON STR.& 125 MICHALAKOPOULOU STR. ATHINA	(210)-3363300	(210)-3238925									
ATTICA BANK S.A.									a		
23, OMIROU STR. ATHINA	(210)-3669000	(210)-3669410									
54, AKADIMIAS STR. ATHINA	(210)-3390757	(210)-3646090									
AXIA VENTURES GROUP LTD				a	a						
10, G. KRANIDIOTI NICOSIA	+357 22 742000	+357 22 742001									
AXON SECURITIES S.A.				a			a				a
48, STADIOU ATHINA	(210)-3363800	(210)-3243903									
BANK OF CYPRUS PUBLIC COMPANY LTD									a		
, 51,STASINOU (AG. PARASKEVI, STROVOLOS) NICOSIA	(0035722)-121883	(0035722)-336258									
170, ALEXANDRAS AVE ATHINA	(210)-6477708	(210)-6477709									
BETA SECURITIES S.A.				a		a		a		a	
, BRAILA & 29 ALEXANDRAS AVE ATHINA	(210)-6478900	(210)-6410139									
BNP PARIBAS SECURITIES SERVICES									a		
94, VAS. SOFIAS AVE ATHINA	(210)-7468500	(210)-7468579									
CAPITAL SECURITIES S.A.				a			a				a
58, MITROPOLEOS STR. ATHINA	(210)-3369700	(210)-3369820									
CFS SECURITIES & INVESTMENT SERVICES S.A.				a			a			a	
3, STADIOU STR. ATHINA	(210)-3360800	(210)-3311854									
CITIBANK INTERNATIONAL PLC (ATHENS BRANCH)									a		
8, OTONOS ATHINA	(210)-9293084	(210)-9293461									
CITIGROUP GLOBAL MARKET LTD				a	a						
, CITIGROUP CENTRE, CANADA SQUARE, CANARY WHART LONDON	002079864000	002079862266									
CREDIT SUISSE SECURITIES (EUROPE) LIMITED				a	a						
, ONE CABOT SQUARE LONDON	+44 20 7888 8888	+44 20 7888 1600									
CYCLOS SECURITIES S.A.				a			a			a	
39, PANEPISTIMIOU STR. ATHINA	(210)-3364300	(210)-3239122									
D.A. TSEKOURAS SEC. S.A.				a							
, PESMAZOGLOY 3	(210)-3214406	(210)-3211997									
DEUTSCHE BANK A.G.				a	a		a				
70, THEODOR-HEUSS-ALLEE FRANKFURT	0049 69 910 00	0049 69 910 34 225									
DYNAMIC SECURITIES				a			a			a	
6 - 10, CHAR. TRIKOUPH STR. ATHINA	(210)-3677700	(210)-3677777									
EL. PETROPOULAKIS SECURITIES S.A.				a			a				a
9, ARISTIDOU STR. ATHINA	(210)-3213928	(210)-3216810									
EUROBANK EQUITIES S.A.				a		a		a		a	
10, FILELLINON STR. ATHINA	(210)-3720000	(210)-3720001									
EUROBANK ERGASIAS S.A.									a		
8, OTHONOS STR. ATHINA	(210)-3337000	(210)-3233866									
	(210)-3337969	(210)-3245916									
EUROCORP SECURITIES S.A.				a			a			a	
14, FILIKIS ETAIRIAS SQ. ATHINA	(210)-7263500	(210)-7263666									
EUOTRUST BROKERAGE S.A.				a							
13-15, SOPHOCLEOUS STR. ATHINA	(210)-3363100	(210)-3238334									
EUROXX SECURITIES S.A.				a			a			a	
7, PALAIOLOGOU STR. CHALANDRI	(210)-6879400	(210)-6879401									
G.A. PERVANAS SECURITIES & INVESTMENT SERVICES CO S.A.				a							a
7 - 9, SOPHOCLEOUS STR. ATHINA	(210)-3251875	(210)-3210291									
GLOBAL CAPITAL SECURITIES AND FINANCIAL SERVICES LTD				a	a						
5, LEMESOU AVE. LEMESOS CYPRUS	(+35722)-710710	(+35722)-339332									

Athex & ATHEXClear Members List

Member Name	Stock Market			Derivatives Market		ATHEXClear Member					
	Address	Phone	Fax	Market Member	Remote Member	Market Maker	Proprietary	Market Maker	General Clearing	Direct Clearing	Non Clearing
GUARDIAN TRUST SECURITIES S.A				a			a				a
15, FILELLINON STR. ATHINA	(210)-3220402	(210)-3220498									
HELLENIC AMERICAN SEC. S.A.				a		a	a			a	
6, EVRIPIDOU STR. ATHINA	(210)-3311100	(210)-3215968									
HELLENIC BANK (INVESTMENTS) LTD				a	a						
31, KYRIAKOY MATSI AVE. NICOSIA	(+35722)-500100	(+35722)-500110									
HSBC BANK PLC									a		
109-111, MESOGION AVE ATHINA	(210)-6961507	(210)-6929310									
INDEX SECURITIES S.A.				a							
6, DRAGATSANIOU STR. ATHINA	(210)-3213920	(210)-3213216									
INVESTMENT BANK OF GREECE S.A.				a		a		a	a		
32, AIGEIALIAS MAROUSI	(210) 8173000	(210) 8173101									
24B, KIFISSIAS AVE MAROUSI	(210)-8171800	(210)-8171889									
J. CHR. MAVRIKIS SECURITIES S.A.				a							
5, SOPHOCLEOUS STR. ATHINA	(210)-3213949	(210)-3217767									
KAPPA SECURITIES S.A.				a			a				a
15, VALAORITOU STR. ATHINA	(210)-3610371	(210)-3641002									
KYPROU SECURITIES S.A.											a
26, HALKIDONOS & FIDIPIDOY STR. ATHINA	(210)-8701000	(210)-8701049									
LAIKI FINANCIAL SERVICES LTD				a	a						
26, CLR HOUSE, VIRONOS AVE. NICOSIA	(+35722)-898600	(+35722)-680953									
LEON DEPOLAS SECURITIES S.A.				a			a				a
1, CHR. LADA STR. ATHINA	(210)-3213286	(210)-3211618									
MAGNA TRUST SECURITIES S.A				a							a
9, FIDIOU STR. ATHINA	(210)-3327503	(210)-3327599									
MEGA EQUITY SECURITIES & FINANCIAL SERVICES LTD				a	a		a				
42-44, GRIBA DIGENI AV. NICOSIA	(+35722)-711711	(+35722)-711811									
MERIT SECURITIES S.A				a		a	a			a	
38, VAS. KONSTANTINOY STR. ATHINA	(210)-3671800	(210)-3671830									
MERRILL LYNCH				a	a						
2, KING EDWARD STREET LONDON	(+4420)-79952000	(+4420)-79954525									
MIDAS BROKERAGE S.A.				a							
5, SOPHOCLEOUS STR. ATHINA	(210)-3253203	(210)-3253205									
N. CHRYSOCHOIDIS STOCK BROKERAGE I.S.S.A.				a			a			a	
7 - 9, SOPHOCLEOUS STR. ATHINA	(210)-3213913	(210)-3216115									
NATIONAL BANK OF GREECE S.A.				a			a		a		
86, AILOU STR. ATHINA	(210)-3341000	(210)-3228187									
68, AKADIMIAS STR. ATHINA	(210)-3328817	(210)-3328678									
NBG SECURITIES S.A.				a		a		a			a
68, AKADIMIAS STR. ATHINA	(210)-3328500	(210)-3328565									
NUNTIUS SECURITIES S.A				a							a
6, DRAGATSANIOU STR. ATHINA	(210)-3350599	(210)-3254846									
PANTELAKIS SEC. S.A.				a			a				a
109-111, MESOGION AVE. ATHINA	(210)-6965000	(210)-6929550									
PEGASUS BROKERAGE FIRM S.A				a			a				
17, VALAORITOU STR. ATHINA	(210)-3670700	(210)-3670760									
PIRAEUS BANK S.A.				a		a			a		
4, AMERIKIS STR. ATHINA	(210)-3335000	(210)-3335079									
4, AMERIKIS STR ATHINA	(210)-3335918	(210)-3254207									
PIRAEUS SECURITIES S.A.				a				a		a	
10, STADIOU STR. ATHINA	(210)-3354100	(210)-3233814									
PRELIUM SECURITIES & INVESTMENT SERVICES S.A.				a			a				a
, KIFISSIAS AVE & 1 DAVAKI STR ATHINA	(210)-3677000	(210)-6920403									
PROCHOICE SECURITIES LTD				a	a						
57, SPYROY KYPRIANOY NICOSIA	+357-24-661192	+357-24-662464									
SHARELINK SECURITIES & FINANCIAL SERVICES LTD				a	a		a				
6, ELLINAS HOUSE, THEOTOKI STR. NICOSIA	(+35722)-554200	(+35722)-750852									
SOCIETE GENERALE S.A.				a	a		a				
17, COURS VALMY PUTEAUX - LA DEFENSE PARIS	(+33) 142134754	(+33) 142135697									
240-242, KIFISSIAS AVE ATHINA	(210)-6790161	(210)-6728828									
SOLIDUS SECURITIES S.A				a			a			a	
64, LOUIZIS RIANKOUR STR. ATHINA	(210)-6925500	(210)-6985421									

Athex & ATHEXClear Members List

Member Name			Stock Market			Derivatives Market		ATHEXClear Member		
Address	Phone	Fax	Market Member	Remote Member	Market Maker	Proprietary	Market Maker	General Clearing	Direct Clearing	Non Clearing
ST. EM. LAVRENTAKIS SECURITIES S.A.			a			a				a
7 - 9, SOPHOCLEOUS STR. ATHINA										
THE CYPRUS INVESTMENT AND SECURITIES CORPORATION LIMITED (CISCO)			a	a						
4, EVROU STR. (EUROLIFE HOUSE) NICOSIA										
UBS LIMITED			a	a						
1, FINSBURY AVENUE LONDON										
KARAMANOF SECURITIES & INV. SERVICES S.A.			a			a				
2, SQ. ST THEODORON ATHINA										

List of Stocks under Market Making operations

Securities	Market Maker	Start Market Making	Stock Category
CYPRUS POPULAR BANK (CR)			Suspension Status
	PIRAEUS SECURITIES S.A.	02/02/2013	
VIOHALCO (CB)			Suspension Status
	ALPHA FINANCE INVESTMENT SERVICES S.A.	11/02/2013	
	EUROBANK EQUITIES S.A.	20/01/2013	
	MERIT SECURITIES S.A.	13/12/2012	
ALPHA BANK (CR)			Main Market
	EUROBANK EQUITIES S.A.	24/10/2012	
	HELLENIC AMERICAN SEC. S.A.	25/07/2014	
	INVESTMENT BANK OF GREECE S.A.	08/01/2013	
	MERIT SECURITIES S.A.	03/09/2013	
	NBG SECURITIES S.A.	15/01/2013	
	PIRAEUS SECURITIES S.A.	28/05/2013	
ALUMIL (CR)			Main Market
	BETA SECURITIES S.A.	18/07/2013	
ATTICA BANK S.A. (CR)			Main Market
	BETA SECURITIES S.A.	02/06/2014	
	EUROBANK EQUITIES S.A.	25/07/2014	
	HELLENIC AMERICAN SEC. S.A.	25/07/2014	
BANK OF CYPRUS (CR)			Main Market
	EUROBANK EQUITIES S.A.	23/03/2015	
BYTE COMPUTER SA (CR)			Main Market
	MERIT SECURITIES S.A.	04/08/2013	
CC HBC AG (CR)			Main Market
	EUROBANK EQUITIES S.A.	23/10/2013	
	NBG SECURITIES S.A.	29/04/2013	
ELLAKTOR (CR)			Main Market
	EUROBANK EQUITIES S.A.	01/06/2013	
	INVESTMENT BANK OF GREECE S.A.	02/01/2013	
	NBG SECURITIES S.A.	25/06/2013	
ELTECH ANEMOS S.A. (CR)			Main Market
	EUROBANK EQUITIES S.A.	22/07/2014	
ELTON SA (CR)			Main Market
	BETA SECURITIES S.A.	03/09/2013	
EUROBANK ERGASIAS (CR)			Main Market
	ALPHA FINANCE INVESTMENT SERVICES S.A.	08/01/2013	
	EUROBANK EQUITIES S.A.	01/06/2013	
	HELLENIC AMERICAN SEC. S.A.	25/07/2014	
	INVESTMENT BANK OF GREECE S.A.	08/01/2013	
	PIRAEUS SECURITIES S.A.	28/09/2013	
EUROCONSULTANTS S.A. (CR)			Main Market
	EUROBANK EQUITIES S.A.	22/07/2014	
FOLLI FOLLIE (CR)			Main Market
	NBG SECURITIES S.A.	17/02/2014	
FRIGOGLASS SA (CR)			Main Market
	EUROBANK EQUITIES S.A.	27/10/2014	
GEK TERNA (CR)			Main Market
	INVESTMENT BANK OF GREECE S.A.	02/01/2013	
GR. SARANTIS SA (CR)			Main Market
	BETA SECURITIES S.A.	14/05/2013	
HELLENIC EXCHANGES-A.S.E. (CR)			Main Market
	EUROBANK EQUITIES S.A.	01/06/2013	
	HELLENIC AMERICAN SEC. S.A.	01/09/2014	
	INVESTMENT BANK OF GREECE S.A.	02/01/2013	
	NBG SECURITIES S.A.	25/06/2013	
INTRALOT (CR)			Main Market
	EUROBANK EQUITIES S.A.	01/06/2013	
	INVESTMENT BANK OF GREECE S.A.	02/01/2013	
	PIRAEUS SECURITIES S.A.	28/09/2013	
KRETA FARM SA (CR)			Main Market
	EUROBANK EQUITIES S.A.	17/11/2014	
LAMDA DEVELOPMENT SA (CR)			Main Market
	EUROBANK EQUITIES S.A.	08/12/2014	
MARFIN INVESTMENT GROUP (CR)			Main Market
	EUROBANK EQUITIES S.A.	23/03/2015	
	HELLENIC AMERICAN SEC. S.A.	25/07/2014	
	PIRAEUS SECURITIES S.A.	02/02/2013	
MLS MULTIMEDIA SA (CR)			Main Market
	BETA SECURITIES S.A.	18/07/2013	

List of Stocks under Market Making operations

Securities	Market Maker	Start Market Making	Stock Category
MOTOR OIL (CR)			Main Market
	EUROBANK EQUITIES S.A.	23/10/2012	
	HELLENIC AMERICAN SEC. S.A.	01/09/2014	
	NBG SECURITIES S.A.	17/02/2014	
MYTILINEOS HOLDINGS (CR)			Main Market
	HELLENIC AMERICAN SEC. S.A.	25/07/2014	
	INVESTMENT BANK OF GREECE S.A.	02/01/2013	
	NBG SECURITIES S.A.	25/06/2013	
NATIONAL BANK (CR)			Main Market
	ALPHA FINANCE INVESTMENT SERVICES S.A.	08/01/2013	
	EUROBANK EQUITIES S.A.	24/10/2012	
	HELLENIC AMERICAN SEC. S.A.	25/07/2014	
	INVESTMENT BANK OF GREECE S.A.	08/01/2013	
	MERIT SECURITIES S.A.	03/09/2013	
	NBG SECURITIES S.A.	28/02/2013	
	PIRAEUS SECURITIES S.A.	08/09/2013	
OPAP (CR)			Main Market
	ALPHA FINANCE INVESTMENT SERVICES S.A.	08/01/2013	
	EUROBANK EQUITIES S.A.	24/10/2012	
	HELLENIC AMERICAN SEC. S.A.	25/07/2014	
	INVESTMENT BANK OF GREECE S.A.	08/01/2013	
	NBG SECURITIES S.A.	15/01/2013	
OTE (CR)			Main Market
	ALPHA FINANCE INVESTMENT SERVICES S.A.	08/01/2013	
	EUROBANK EQUITIES S.A.	24/10/2012	
	HELLENIC AMERICAN SEC. S.A.	25/07/2014	
	INVESTMENT BANK OF GREECE S.A.	08/01/2013	
	NBG SECURITIES S.A.	01/12/2012	
	PIRAEUS SECURITIES S.A.	08/09/2013	
PAPOUTSANIS (CR)			Main Market
	BETA SECURITIES S.A.	25/11/2013	
PETROPOULOS PETROS (CR)			Main Market
	BETA SECURITIES S.A.	28/05/2013	
PIRAEUS BANK (CR)			Main Market
	EUROBANK EQUITIES S.A.	23/10/2012	
	HELLENIC AMERICAN SEC. S.A.	25/07/2014	
	INVESTMENT BANK OF GREECE S.A.	08/01/2013	
	MERIT SECURITIES S.A.	16/09/2013	
	NBG SECURITIES S.A.	02/06/2013	
	PIRAEUS SECURITIES S.A.	16/02/2013	
PLAISIO COMPUTERS SA (CR)			Main Market
	BETA SECURITIES S.A.	05/05/2014	
	EUROBANK EQUITIES S.A.	02/03/2015	
PPC (CR)			Main Market
	ALPHA FINANCE INVESTMENT SERVICES S.A.	08/01/2013	
	EUROBANK EQUITIES S.A.	23/10/2012	
	HELLENIC AMERICAN SEC. S.A.	01/09/2014	
	INVESTMENT BANK OF GREECE S.A.	08/01/2013	
	NBG SECURITIES S.A.	26/03/2013	
	PIRAEUS SECURITIES S.A.	28/09/2013	
PROFILE SA (CR)			Main Market
	EUROBANK EQUITIES S.A.	23/06/2014	
REDS S.A. (CR)			Main Market
	EUROBANK EQUITIES S.A.	05/09/2014	
S.KANAKIS SA (CR)			Main Market
	BETA SECURITIES S.A.	01/10/2013	
TITAN CEMENT (CR)			Main Market
	EUROBANK EQUITIES S.A.	23/10/2012	
	NBG SECURITIES S.A.	17/02/2014	
VIOHALCO SA/NV (CB)			Main Market
	ALPHA FINANCE INVESTMENT SERVICES S.A.	17/02/2014	
	MERIT SECURITIES S.A.	17/03/2014	

Underlying Asset				Derivatives Market														
Price max	Price min	Closing price	change	Delivery Month	Open price	Price max	Price min	Last price	Closing price	Last Bid	Last Ask	Settlement price	Life high	Life low	Trades	Volume	Open Interest	
FTSE/Athex Large Cap				(Trade Unit: 1 Index Point x 5€, Cash Settlement)														
233.31	229.86	232.54	1.17%	April 2015	231.50	233.00	228.75	231.50	231.50	---	---	230.75	280.00	---	194	1,893	39,077	
				May 2015	231.00	232.00	230.00	232.00	232.00	---	---	231.25	---	238.25	---	19	140	357
				June 2015	---	---	---	---	229.75	---	---	232.75	---	273.00	---	---	---	63
				September 2015	---	---	---	---	229.50	---	---	---	---	---	---	---	---	---
				December 2015	---	---	---	---	230.50	---	---	---	---	---	---	---	---	---
				March 2016	---	---	---	---	231.50	---	---	---	---	---	---	---	---	---

Underlying Asset				Derivatives Market													
Price max	Price min	Closing price	change	Delivery Month	Open price	Price max	Price min	Last price	Closing price	Last Bid	Last Ask	Settlement price	Life high	Life low	Trades	Volume	Open Interest
ALPHA BANK (CR)				(Contract Size: 100 Securities, Physical Delivery)													
0.272	0.264	0.269	1.51%	June 2015	0.268	0.272	0.266	0.270	0.270	---	---	0.268	0.405	---	103	2,218	85,371
				September 2015	---	---	---	---	0.267	---	---	0.270	---	0.403	---	---	50
				December 2015	---	---	---	---	0.269	---	---	---	---	---	---	---	---
				March 2016	---	---	---	---	0.270	---	---	---	---	---	---	---	---
CC HBC AG (CR)				(Contract Size: 100 Securities, Physical Delivery)													
18.77	18.39	18.69	2.52%	June 2015	18.05	18.52	18.05	18.40	18.40	---	---	18.26	18.52	---	18	38	137
				September 2015	---	---	---	---	18.05	---	---	---	---	---	---	---	---
				December 2015	---	---	---	---	18.14	---	---	---	---	---	---	---	---
				March 2016	---	---	---	---	18.23	---	---	---	---	---	---	---	---
CORINTH PIPEWORKS SA (CR)				(Contract Size: 100 Securities, Physical Delivery)													
0.995	0.950	0.950	-3.06%	June 2015	0.996	0.996	0.960	0.960	0.960	---	---	0.932	1.11	---	2	6	517
				September 2015	---	---	---	---	0.989	---	---	---	---	---	---	---	---
				December 2015	---	---	---	---	0.994	---	---	---	---	---	---	---	---
				March 2016	---	---	---	---	0.999	---	---	---	---	---	---	---	---
ELLAKTOR (CR)				(Contract Size: 100 Securities, Physical Delivery)													
1.69	1.65	1.69	2.42%	June 2015	1.70	1.70	1.65	1.68	1.68	---	---	1.67	2.26	---	13	88	1,561
				September 2015	---	---	---	---	1.66	---	---	---	---	---	---	---	---
				December 2015	---	---	---	---	1.67	---	---	---	---	---	---	---	---
				March 2016	---	---	---	---	1.68	---	---	---	---	---	---	---	---
EUROBANK ERGASIAS (CR)				(Contract Size: 100 Securities, Physical Delivery)													
0.112	0.108	0.111	3.74%	June 2015	0.107	0.112	0.107	0.111	0.111	---	---	0.112	0.277	---	101	3,313	226,571
				September 2015	---	---	---	---	0.108	---	---	0.113	0.176	---	---	---	---
				December 2015	---	---	---	---	0.109	---	---	---	---	---	---	---	---
				March 2016	---	---	---	---	0.109	---	---	---	---	---	---	---	---
EYDAP S.A. (CR)				(Contract Size: 100 Securities, Physical Delivery)													
5.11	4.95	4.96	-0.80%	June 2015	5.00	5.02	4.87	4.87	4.87	---	---	4.90	5.86	---	28	54	600
				September 2015	---	---	---	---	4.62	---	---	---	---	---	---	---	---
				December 2015	---	---	---	---	4.64	---	---	---	---	---	---	---	---
				March 2016	---	---	---	---	4.67	---	---	---	---	---	---	---	---
FOLLI FOLLIE (CR)				(Contract Size: 100 Securities, Physical Delivery)													
26.73	25.30	25.65	-1.72%	June 2015	26.48	26.70	25.40	25.65	25.65	---	---	25.20	28.03	---	38	160	109
				September 2015	---	---	---	---	26.34	---	---	---	---	---	---	---	---
				December 2015	---	---	---	---	26.47	---	---	---	---	---	---	---	---
				March 2016	---	---	---	---	26.60	---	---	---	---	---	---	---	---
FRIGOGLASS SA (CR)				(Contract Size: 100 Securities, Physical Delivery)													
1.76	1.71	1.72	0.00%	June 2015	1.77	1.77	1.77	1.77	1.77	---	---	1.69	1.83	---	1	10	356
				September 2015	---	---	---	---	1.74	---	---	---	---	---	---	---	---
				December 2015	---	---	---	---	1.74	---	---	---	---	---	---	---	---
				March 2016	---	---	---	---	1.75	---	---	---	---	---	---	---	---

Underlying Asset				Derivatives Market														
Price max	Price min	Closing price	change	Delivery Month	Open price	Price max	Price min	Last price	Closing price	Last Bid	Last Ask	Settlement price	Life high	Life low	Trades	Volume	Open Interest	
GEK TERNA (CR)																		(Contract Size: 100 Securities, Physical Delivery)
1.67	1.61	1.64	1.86%	June 2015	1.65	1.65	1.63	1.63	1.63	---	---	1.68	2.73	---	3	7	7,822	
				September 2015	---	---	---	---	1.62	---	---	---	---	---	---	---	---	
				December 2015	---	---	---	---	1.63	---	---	---	---	---	---	---	---	
				March 2016	---	---	---	---	1.64	---	---	---	---	---	---	---	---	
GRIVALIA PROPERTIES (CR)																		(Contract Size: 100 Securities, Physical Delivery)
7.29	7.16	7.24	-2.16%	June 2015	7.23	7.26	7.23	7.26	7.26	---	---	7.35	7.88	---	6	10	138	
				September 2015	---	---	---	---	7.29	---	---	---	---	---	---	---	---	
				December 2015	---	---	---	---	7.32	---	---	---	---	---	---	---	---	
				March 2016	---	---	---	---	7.36	---	---	---	---	---	---	---	---	
HELLENIC EXCHANGES-A.S.E. (CR)																		(Contract Size: 100 Securities, Physical Delivery)
4.95	4.76	4.95	3.99%	June 2015	4.68	4.80	4.64	4.80	4.80	---	---	4.83	6.02	---	21	60	1,933	
				September 2015	---	---	---	---	4.71	---	---	4.83	4.86	---	---	---	---	
				December 2015	---	---	---	---	4.74	---	---	---	---	---	---	---	---	
				March 2016	---	---	---	---	4.76	---	---	---	---	---	---	---	---	
HELLENIC PETROLEUM (CR)																		(Contract Size: 100 Securities, Physical Delivery)
3.60	3.52	3.60	1.12%	June 2015	3.54	3.61	3.54	3.61	3.61	---	---	3.59	4.07	---	11	43	4,923	
				September 2015	---	---	---	---	3.44	---	---	---	---	---	---	---	---	
				December 2015	---	---	---	---	3.46	---	---	---	---	---	---	---	---	
				March 2016	---	---	---	---	3.48	---	---	---	---	---	---	---	---	
INTRALOT (CR)																		(Contract Size: 100 Securities, Physical Delivery)
1.53	1.50	1.53	1.32%	June 2015	1.53	1.53	1.53	1.53	1.53	---	---	1.56	1.74	---	1	7	347	
				September 2015	---	---	---	---	1.52	---	---	---	---	---	---	---	---	
				December 2015	---	---	---	---	1.53	---	---	---	---	---	---	---	---	
				March 2016	---	---	---	---	1.54	---	---	---	---	---	---	---	---	
JUMBO SA (CR)																		(Contract Size: 100 Securities, Physical Delivery)
8.80	8.55	8.65	0.12%	June 2015	8.75	8.79	8.59	8.79	8.79	---	---	8.68	9.91	---	18	54	320	
				September 2015	---	---	---	---	8.72	---	---	---	---	---	---	---	---	
				December 2015	---	---	---	---	8.58	---	---	---	---	---	---	---	---	
				March 2016	---	---	---	---	8.63	---	---	---	---	---	---	---	---	
MARFIN INVESTMENT GROUP (CR)																		(Contract Size: 100 Securities, Physical Delivery)
0.139	0.134	0.134	-1.47%	June 2015	0.142	0.145	0.142	0.145	0.145	---	---	0.144	0.232	---	4	20	30,252	
				September 2015	---	---	---	---	0.137	---	---	---	---	---	---	---	---	
				December 2015	---	---	---	---	0.138	---	---	---	---	---	---	---	---	
				March 2016	---	---	---	---	0.139	---	---	---	---	---	---	---	---	
METKA (CR)																		(Contract Size: 100 Securities, Physical Delivery)
8.75	8.62	8.70	1.52%	June 2015	8.34	8.34	8.29	8.29	8.29	---	---	8.23	9.02	---	2	8	316	
				September 2015	---	---	---	---	8.35	---	---	---	---	---	---	---	---	
				December 2015	---	---	---	---	8.39	---	---	---	---	---	---	---	---	
				March 2016	---	---	---	---	8.43	---	---	---	---	---	---	---	---	

Underlying Asset				Derivatives Market													
Price max	Price min	Closing price	change	Delivery Month	Open price	Price max	Price min	Last price	Closing price	Last Bid	Last Ask	Settlement price	Life high	Life low	Trades	Volume	Open Interest
MOTOR OIL (CR)																	
(Contract Size: 100 Securities, Physical Delivery)																	
6.78	6.55	6.74	1.51%	June 2015	6.63	6.75	6.61	6.75	6.75	---	---	6.81	7.38	---	10	25	204
---	---	---	---	September 2015	---	---	---	---	6.50	---	---	---	---	---	---	---	---
---	---	---	---	December 2015	---	---	---	---	6.53	---	---	---	---	---	---	---	---
---	---	---	---	March 2016	---	---	---	---	6.57	---	---	---	---	---	---	---	---
MYTILINEOS HOLDINGS (CR)																	
(Contract Size: 100 Securities, Physical Delivery)																	
5.93	5.77	5.93	3.13%	June 2015	5.81	5.91	5.80	5.91	5.91	---	---	5.86	6.43	---	20	47	3,997
---	---	---	---	September 2015	---	---	---	---	5.80	---	---	5.95	5.79	---	---	---	---
---	---	---	---	December 2015	---	---	---	---	5.83	---	---	---	---	---	---	---	---
---	---	---	---	March 2016	---	---	---	---	5.86	---	---	---	---	---	---	---	---
NATIONAL BANK (CR)																	
(Contract Size: 100 Securities, Physical Delivery)																	
1.16	1.10	1.14	1.79%	June 2015	1.14	1.15	1.10	1.15	1.15	---	---	1.13	2.10	---	215	4,755	42,388
---	---	---	---	September 2015	1.07	1.08	1.07	1.08	1.08	---	---	0.511	1.44	---	3	400	201
---	---	---	---	December 2015	---	---	---	---	1.14	---	---	---	---	---	---	---	---
---	---	---	---	March 2016	---	---	---	---	1.14	---	---	---	---	---	---	---	---
OPAP (CR)																	
(Contract Size: 100 Securities, Physical Delivery)																	
8.79	8.54	8.60	-0.46%	June 2015	8.52	8.56	8.34	8.44	8.44	---	---	8.39	9.21	---	64	186	1,203
---	---	---	---	September 2015	---	---	---	---	8.47	---	---	8.48	9.38	---	---	---	---
---	---	---	---	December 2015	---	---	---	---	8.51	---	---	8.48	8.60	---	---	---	---
---	---	---	---	March 2016	---	---	---	---	8.56	---	---	---	---	---	---	---	---
OTE (CR)																	
(Contract Size: 100 Securities, Physical Delivery)																	
8.40	8.28	8.28	-0.72%	June 2015	8.34	8.36	8.26	8.26	8.26	---	---	8.30	10.57	---	5	30	6,075
---	---	---	---	September 2015	---	---	---	---	8.42	---	---	8.16	9.46	---	---	---	---
---	---	---	---	December 2015	---	---	---	---	8.46	---	---	---	---	---	---	---	---
---	---	---	---	March 2016	---	---	---	---	8.50	---	---	---	---	---	---	---	---
P.P.A. S.A. (CR)																	
(Contract Size: 100 Securities, Physical Delivery)																	
11.46	11.24	11.40	1.24%	June 2015	11.32	11.47	11.30	11.47	11.47	---	---	11.49	13.90	---	10	31	502
---	---	---	---	September 2015	---	---	---	---	11.24	---	---	---	---	---	---	---	---
---	---	---	---	December 2015	---	---	---	---	11.30	---	---	---	---	---	---	---	---
---	---	---	---	March 2016	---	---	---	---	11.36	---	---	---	---	---	---	---	---
PIRAEUS BANK (CR)																	
(Contract Size: 100 Securities, Physical Delivery)																	
0.337	0.326	0.337	4.33%	June 2015	0.329	0.340	0.325	0.336	0.336	---	---	0.334	1.00	---	150	3,136	125,426
---	---	---	---	September 2015	---	---	---	---	0.326	---	---	0.342	0.733	---	---	---	200
---	---	---	---	December 2015	---	---	---	---	0.328	---	---	---	---	---	---	---	---
---	---	---	---	March 2016	---	---	---	---	0.329	---	---	---	---	---	---	---	---
PPC (CR)																	
(Contract Size: 100 Securities, Physical Delivery)																	
5.50	5.35	5.45	1.30%	June 2015	5.40	5.48	5.36	5.43	5.43	---	---	5.40	8.06	---	34	116	3,396
---	---	---	---	September 2015	---	---	---	---	5.40	---	---	---	---	---	---	---	---
---	---	---	---	December 2015	---	---	---	---	5.43	---	---	---	---	---	---	---	---
---	---	---	---	March 2016	---	---	---	---	5.45	---	---	---	---	---	---	---	---

Underlying Asset				Derivatives Market													
Price max	Price min	Closing price	change	Delivery Month	Open price	Price max	Price min	Last price	Closing price	Last Bid	Last Ask	Settlement price	Life high	Life low	Trades	Volume	Open Interest
SIDENOR (CR)				(Contract Size: 100 Securities, Physical Delivery)													
0.543	0.522	0.543	2.26%	June 2015	---	---	---	---	0.533	---	---	0.557	0.616	---	---	---	576
				September 2015	---	---	---	---	0.536	---	---	---	---	---	---	---	---
				December 2015	---	---	---	---	0.538	---	---	---	---	---	---	---	---
				March 2016	---	---	---	---	0.541	---	---	---	---	---	---	---	---
TERNA ENERGY (CR)				(Contract Size: 100 Securities, Physical Delivery)													
2.26	2.15	2.26	4.15%	June 2015	2.24	2.24	2.24	2.24	2.24	---	---	2.42	3.15	---	1	1	1,320
				September 2015	---	---	---	---	2.13	---	---	---	---	---	---	---	---
				December 2015	---	---	---	---	2.14	---	---	---	---	---	---	---	---
				March 2016	---	---	---	---	2.15	---	---	---	---	---	---	---	---
TITAN CEMENT (CR)				(Contract Size: 100 Securities, Physical Delivery)													
22.08	21.32	22.00	0.23%	June 2015	21.84	21.90	21.40	21.90	21.90	---	---	22.06	22.38	---	10	18	204
				September 2015	---	---	---	---	22.05	---	---	---	---	---	---	---	---
				December 2015	---	---	---	---	22.16	---	---	---	---	---	---	---	---
				March 2016	---	---	---	---	22.27	---	---	---	---	---	---	---	---
VIOHALCO SA/NV (CB)				(Contract Size: 100 Securities, Physical Delivery)													
2.81	2.74	2.77	-0.36%	June 2015	---	---	---	---	2.79	---	---	2.75	3.20	---	---	---	166
				September 2015	---	---	---	---	2.81	---	---	---	---	---	---	---	---
				December 2015	---	---	---	---	2.82	---	---	---	---	---	---	---	---
				March 2016	---	---	---	---	2.83	---	---	---	---	---	---	---	---

FTSE/Athex Large Cap

(Trade Unit: 1 Index Point x 5€ - Exercise Style: European, Cash Settlement)

Exercise Price	Call Options														Put Options																		
	April 2015							May 2015							Other Months		April 2015							May 2015							Other Months		Exercise Price
	Open price	Price max	Price min	Last price	Closing price	Volume	Open Interest	Open price	Price max	Price min	Last price	Closing price	Volume	Open Interest	Volume	Open Interest	Open price	Price max	Price min	Last price	Closing price	Volume	Open Interest	Open price	Price max	Price min	Last price	Closing price	Volume	Open Interest	Volume	Open Interest	
180	-	-	-	-	-	-	-	-	-	-	-	-	-	-	-	-	-	-	-	-	-	-	-	-	-	-	-	-	-	-	-	-	
195	-	-	-	-	-	-	-	-	-	-	-	-	-	-	-	-	-	-	-	-	-	-	-	-	-	-	-	-	-	-	-	-	195
200	0.00	0.00	0.00	-	30.00	-	-	-	-	-	-	-	-	-	-	-	0.00	0.00	0.00	-	0.62	-	2	-	-	-	-	-	-	-	-	-	200
205	0.00	0.00	0.00	-	25.50	-	-	0.00	0.00	0.00	-	31.50	-	-	-	0.00	0.00	0.00	-	1.10	-	10	0.00	0.00	0.00	-	7.50	-	-	-	-	205	
210	0.00	0.00	0.00	-	21.25	-	40	0.00	0.00	0.00	-	28.25	-	-	-	0.00	0.00	0.00	-	1.90	-	4	0.00	0.00	0.00	-	9.20	-	-	-	-	210	
215	0.00	0.00	0.00	-	17.50	-	40	0.00	0.00	0.00	-	25.00	-	-	-	0.00	0.00	0.00	-	3.00	-	6	0.00	0.00	0.00	-	11.00	-	-	-	-	215	
220	14.50	14.50	14.50	14.50	14.50	5	53	0.00	0.00	0.00	-	22.25	-	-	-	14.50	14.50	0.00	-	4.50	-	79	0.00	0.00	0.00	-	13.25	-	-	-	-	220	
225	0.00	0.00	0.00	-	11.00	-	1	0.00	0.00	0.00	-	19.75	-	-	-	0.00	0.00	0.00	-	6.40	-	-	0.00	0.00	0.00	-	15.75	-	-	-	-	225	
230	7.00	7.00	7.00	7.00	7.00	1	170	18.00	18.00	18.00	18.00	18.00	5	5	-	-	7.00	7.00	8.00	8.00	8.00	16	50	0.00	0.00	0.00	-	18.25	-	-	-	-	230
235	0.00	0.00	0.00	-	6.20	-	82	16.00	16.00	16.00	16.00	16.00	20	100	-	-	0.00	0.00	0.00	-	11.75	-	50	0.00	0.00	0.00	-	21.25	-	-	-	-	235
240	0.00	0.00	0.00	-	4.50	-	62	0.00	0.00	0.00	-	13.25	-	-	-	0.00	0.00	0.00	-	15.00	-	-	0.00	0.00	0.00	-	24.25	-	-	-	-	240	
245	0.00	0.00	0.00	-	3.20	-	410	0.00	0.00	0.00	-	11.50	-	-	-	0.00	0.00	0.00	-	18.75	-	1	0.00	0.00	0.00	-	27.50	-	-	-	-	245	
250	0.00	0.00	0.00	-	2.20	-	720	0.00	0.00	0.00	-	9.90	-	-	-	0.00	0.00	0.00	-	22.75	-	-	0.00	0.00	0.00	-	31.00	-	-	-	-	250	
255	0.00	0.00	0.00	-	1.50	-	50	0.00	0.00	0.00	-	8.50	-	-	-	0.00	0.00	0.00	-	27.00	-	5	0.00	0.00	0.00	-	34.50	-	-	-	-	255	
260	0.00	0.00	0.00	-	0.96	-	161	0.00	0.00	0.00	-	7.30	-	-	-	0.00	0.00	0.00	-	31.50	-	-	0.00	0.00	0.00	-	38.25	-	-	-	-	260	
265	0.00	0.00	0.00	-	0.62	-	3	0.00	0.00	0.00	-	6.30	-	-	-	0.00	0.00	0.00	-	36.00	-	1	0.00	0.00	0.00	-	42.25	-	-	-	-	265	
270	0.00	0.00	0.00	-	0.38	-	1,005	0.00	0.00	0.00	-	5.40	-	-	-	0.00	0.00	0.00	-	40.75	-	-	0.00	0.00	0.00	-	46.25	-	-	-	-	270	
275	0.00	0.00	0.00	-	0.24	-	105	0.00	0.00	0.00	-	4.50	-	-	-	0.00	0.00	0.00	-	45.75	-	-	0.00	0.00	0.00	-	50.50	-	-	-	-	275	
280	0.00	0.00	0.00	-	0.14	-	-	0.00	0.00	0.00	-	3.90	-	-	-	0.00	0.00	0.00	-	50.50	-	-	0.00	0.00	0.00	-	54.50	-	-	-	-	280	
285	0.00	0.00	0.00	-	0.08	-	40	0.00	0.00	0.00	-	3.30	-	-	-	0.00	0.00	0.00	-	55.50	-	-	0.00	0.00	0.00	-	59.00	-	-	-	-	285	
290	0.00	0.00	0.00	-	0.05	-	-	0.00	0.00	0.00	-	2.70	-	-	-	0.00	0.00	0.00	-	60.50	-	-	0.00	0.00	0.00	-	63.50	-	-	-	-	290	
295	-	-	-	-	-	-	-	-	-	-	-	-	-	-	-	-	-	-	-	-	-	-	-	-	-	-	-	-	-	-	-	295	
300	-	-	-	-	-	-	-	-	-	-	-	-	-	-	-	-	-	-	-	-	-	-	-	-	-	-	-	-	-	-	-	300	
305	-	-	-	-	-	-	-	-	-	-	-	-	-	-	-	-	-	-	-	-	-	-	-	-	-	-	-	-	-	-	-	305	
310	0.00	0.00	0.00	-	0.04	-	-	-	-	-	-	-	-	-	-	0.00	0.00	0.00	-	80.50	-	4	-	-	-	-	-	-	-	-	-	310	
315	-	-	-	-	-	-	-	-	-	-	-	-	-	-	-	-	-	-	-	-	-	-	-	-	-	-	-	-	-	-	-	315	
320	-	-	-	-	-	-	-	-	-	-	-	-	-	-	-	-	-	-	-	-	-	-	-	-	-	-	-	-	-	-	-	320	
325	-	-	-	-	-	-	-	-	-	-	-	-	-	-	-	-	-	-	-	-	-	-	-	-	-	-	-	-	-	-	-	325	
330	-	-	-	-	-	-	-	-	-	-	-	-	-	-	-	-	-	-	-	-	-	-	-	-	-	-	-	-	-	-	-	330	
335	-	-	-	-	-	-	-	-	-	-	-	-	-	-	-	-	-	-	-	-	-	-	-	-	-	-	-	-	-	-	-	335	
340	-	-	-	-	-	-	-	-	-	-	-	-	-	-	-	-	-	-	-	-	-	-	-	-	-	-	-	-	-	-	-	340	
345	-	-	-	-	-	-	-	-	-	-	-	-	-	-	-	-	-	-	-	-	-	-	-	-	-	-	-	-	-	-	-	345	
350	-	-	-	-	-	-	-	-	-	-	-	-	-	-	-	-	-	-	-	-	-	-	-	-	-	-	-	-	-	-	-	350	
355	-	-	-	-	-	-	-	-	-	-	-	-	-	-	-	-	-	-	-	-	-	-	-	-	-	-	-	-	-	-	-	355	
360	-	-	-	-	-	-	-	-	-	-	-	-	-	-	-	-	-	-	-	-	-	-	-	-	-	-	-	-	-	-	-	360	
365	-	-	-	-	-	-	-	-	-	-	-	-	-	-	-	-	-	-	-	-	-	-	-	-	-	-	-	-	-	-	-	365	

FTSE/Athex Large Cap

(Trade Unit: 1 Index Point x 5€ - Exercise Style: European, Cash Settlement)

Exercise Price	Call Options														Put Options														Exercise Price				
	April 2015							May 2015							Other Months		April 2015							May 2015							Other Months		
	Open price	Price max	Price min	Last price	Closing price	Volume	Open Interest	Open price	Price max	Price min	Last price	Closing price	Volume	Open Interest	Volume	Open Interest	Open price	Price max	Price min	Last price	Closing price	Volume	Open Interest	Open price	Price max	Price min	Last price	Closing price		Volume	Open Interest	Volume	Open Interest
370	-	-	-	-	-	-	-	-	-	-	-	-	-	-	-	-	-	-	-	-	-	-	-	-	-	-	-	-	-	-	-	-	370
375	-	-	-	-	-	-	-	-	-	-	-	-	-	-	-	-	-	-	-	-	-	-	-	-	-	-	-	-	-	-	-	-	375
380	-	-	-	-	-	-	-	-	-	-	-	-	-	-	-	-	-	-	-	-	-	-	-	-	-	-	-	-	-	-	-	-	380
385	-	-	-	-	-	-	-	-	-	-	-	-	-	-	-	-	-	-	-	-	-	-	-	-	-	-	-	-	-	-	-	-	385
390	-	-	-	-	-	-	-	-	-	-	-	-	-	-	-	-	-	-	-	-	-	-	-	-	-	-	-	-	-	-	-	-	390
395	-	-	-	-	-	-	-	-	-	-	-	-	-	-	-	-	-	-	-	-	-	-	-	-	-	-	-	-	-	-	-	-	395
400	-	-	-	-	-	-	-	-	-	-	-	-	-	-	-	-	-	-	-	-	-	-	-	-	-	-	-	-	-	-	-	-	400
405	-	-	-	-	-	-	-	-	-	-	-	-	-	-	-	-	-	-	-	-	-	-	-	-	-	-	-	-	-	-	-	-	405
410	-	-	-	-	-	-	-	-	-	-	-	-	-	-	-	-	-	-	-	-	-	-	-	-	-	-	-	-	-	-	-	-	410
415	-	-	-	-	-	-	-	-	-	-	-	-	-	-	-	-	-	-	-	-	-	-	-	-	-	-	-	-	-	-	-	-	415
420	-	-	-	-	-	-	-	-	-	-	-	-	-	-	-	-	-	-	-	-	-	-	-	-	-	-	-	-	-	-	-	-	420
425	-	-	-	-	-	-	-	-	-	-	-	-	-	-	-	-	-	-	-	-	-	-	-	-	-	-	-	-	-	-	-	-	425
430	-	-	-	-	-	-	-	-	-	-	-	-	-	-	-	-	-	-	-	-	-	-	-	-	-	-	-	-	-	-	-	-	430
435	-	-	-	-	-	-	-	-	-	-	-	-	-	-	-	-	-	-	-	-	-	-	-	-	-	-	-	-	-	-	-	-	435
440	-	-	-	-	-	-	-	-	-	-	-	-	-	-	-	-	-	-	-	-	-	-	-	-	-	-	-	-	-	-	-	-	440
445	-	-	-	-	-	-	-	-	-	-	-	-	-	-	-	-	-	-	-	-	-	-	-	-	-	-	-	-	-	-	-	-	445
450	-	-	-	-	-	-	-	-	-	-	-	-	-	-	-	-	-	-	-	-	-	-	-	-	-	-	-	-	-	-	-	-	450
Totals:						6	2,942						25	105	0	24							16	212					0	0	0	24	
Number of Trades:						2						2			0								5					0		0			

FTSE/Athex Large Cap

(Trade Unit: 1 Index Point x 5€ - Exercise Style: European, Cash Settlement)

Call Options																Put Options																
April 2015							May 2015							Other Months			April 2015					May 2015					Other Months			Exercise Price		
Exercise Price	Open price	Price max	Price min	Last price	Closing price	Volume	Open Interest	Open price	Price max	Price min	Last price	Closing price	Volume	Open Interest	Volume	Open Interest	Open price	Price max	Price min	Last price	Closing price	Volume	Open Interest	Open price	Price max	Price min	Last price	Closing price	Volume		Open Interest	Volume

ALPHA BANK (CR)

(Contract Size: 100 Securities, Exercise Style: American, Physical Delivery)

Exercise Price	Call Options														Put Options																	
	April 2015							May 2015							Other Months		April 2015							May 2015				Other Months		Exercise Price		
	Open price	Price max	Price min	Last price	Closing price	Volume	Open Interest	Open price	Price max	Price min	Last price	Closing price	Volume	Open Interest	Volume	Open Interest	Open price	Price max	Price min	Last price	Closing price	Volume	Open Interest	Open price	Price max	Price min	Last price	Closing price	Volume		Open Interest	Volume
0.100	0.000	0.000	0.000	0.165	-	-	0.000	0.000	0.000	0.000	0.165	-	-			0.000	0.000	0.000	0.001	-	-	0.000	0.000	0.000	0.000	0.001	-	-				0.001
0.200	0.000	0.000	0.000	0.065	-	-	0.000	0.000	0.000	0.000	0.072	-	-			0.000	0.000	0.000	0.002	-	-	0.000	0.000	0.000	0.000	0.006	-	-			0.002	
0.300	0.000	0.000	0.000	0.005	-	-	0.000	0.000	0.000	0.000	0.019	-	-			0.000	0.000	0.000	0.040	-	-	0.000	0.000	0.000	0.000	0.054	-	-			0.003	
0.400	0.000	0.000	0.000	0.001	-	-	0.000	0.000	0.000	0.000	0.004	-	-			0.000	0.000	0.000	0.135	-	-	0.000	0.000	0.000	0.000	0.138	-	-			0.004	
0.500	0.000	0.000	0.000	0.003	-	-	0.000	0.000	0.000	0.000	0.001	-	-			0.000	0.000	0.000	0.235	-	-	0.000	0.000	0.000	0.000	0.235	-	-			0.005	
0.600	0.000	0.000	0.000	0.001	-	-	0.000	0.000	0.000	0.000	0.001	-	-			0.000	0.000	0.000	0.335	-	-	0.000	0.000	0.000	0.000	0.335	-	-			0.006	
0.700	0.000	0.000	0.000	0.001	-	-	0.000	0.000	0.000	0.000	0.002	-	-			0.000	0.000	0.000	0.435	-	-	0.000	0.000	0.000	0.000	0.435	-	-			0.007	
0.800	0.000	0.000	0.000	0.002	-	-	0.000	0.000	0.000	0.000	0.001	-	-			0.000	0.000	0.000	0.535	-	-	0.000	0.000	0.000	0.000	0.535	-	-			0.008	
0.900	0.000	0.000	0.000	0.001	-	-						-	-			0.000	0.000	0.000	0.635	-	-						-	-			0.009	
1.000					-	-						-	-							-	-						-	-			0.010	
1.100					-	-						-	-							-	-						-	-			0.011	
Totals:					0	0						0	0	0	0					0	0						0	0	0	0		
Number of Trades:					0							0		0						0.00							0		0			

NATIONAL BANK (CR)

(Contract Size: 100 Securities, Exercise Style: American, Physical Delivery)

Exercise Price	Call Options														Put Options																	
	April 2015						May 2015						Other Months		April 2015						May 2015						Other Months		Exercise Price			
	Open price	Price max	Price min	Last price	Closing price	Volume	Open Interest	Open price	Price max	Price min	Last price	Closing price	Volume	Open Interest	Volume	Open Interest	Open price	Price max	Price min	Last price	Closing price	Volume	Open Interest	Open price	Price max	Price min	Last price	Closing price		Volume	Open Interest	Volume
0.600	0.000	0.000	0.000	0.520	-	-	-	-	-	-	-	-	-	-	-	0.000	0.000	0.000	0.001	-	-	-	-	-	-	-	-	-		-	-	-
0.700	0.000	0.000	0.000	0.420	-	-	-	-	-	-	-	-	-	-	-	0.000	0.000	0.000	0.001	-	-	-	-	-	-	-	-	-	-	-	-	0.007
0.800	0.000	0.000	0.000	0.321	-	-	0.000	0.000	0.000	0.340	-	-	-	-	-	0.000	0.000	0.000	0.001	-	-	-	-	0.000	0.000	0.000	0.018	-	-	-	-	0.008
0.900	0.000	0.000	0.000	0.225	-	-	0.000	0.000	0.000	0.263	-	-	-	-	-	0.000	0.000	0.000	0.005	-	-	-	-	0.000	0.000	0.000	0.041	-	-	-	-	0.009
1.000	0.000	0.000	0.000	0.141	-	30	0.000	0.000	0.000	0.197	-	-	-	-	-	0.000	0.000	0.000	0.020	-	-	-	-	0.000	0.000	0.000	0.075	-	-	-	-	0.010
1.100	0.000	0.000	0.000	0.077	-	-	0.000	0.000	0.000	0.144	-	-	-	-	-	0.000	0.000	0.000	0.056	-	-	-	-	0.000	0.000	0.000	0.122	-	-	-	-	0.011
1.200	0.000	0.000	0.000	0.036	-	-	0.000	0.000	0.000	0.104	-	-	-	-	-	0.000	0.000	0.000	0.116	-	-	-	-	0.000	0.000	0.000	0.181	-	-	-	-	0.012
1.300	0.000	0.000	0.000	0.015	-	150	0.000	0.000	0.000	0.073	-	-	-	-	-	0.000	0.000	0.000	0.195	-	-	-	-	0.000	0.000	0.000	0.251	-	-	-	-	0.013
1.400	0.000	0.000	0.000	0.005	-	-	0.000	0.000	0.000	0.051	-	-	-	-	-	0.000	0.000	0.000	0.285	-	-	-	-	0.000	0.000	0.000	0.329	-	-	-	-	0.014
1.500	0.000	0.000	0.000	0.002	-	-	0.000	0.000	0.000	0.035	-	-	-	-	-	0.000	0.000	0.000	0.381	-	-	-	-	0.000	0.000	0.000	0.413	-	-	-	-	0.015
1.600	0.000	0.000	0.000	0.001	-	-	0.000	0.000	0.000	0.023	-	-	-	-	-	0.000	0.000	0.000	0.480	-	-	-	-	0.000	0.000	0.000	0.501	-	-	-	-	0.016
1.700	0.000	0.000	0.000	0.001	-	-	0.000	0.000	0.000	0.016	-	-	-	-	-	0.000	0.000	0.000	0.580	-	-	-	-	0.000	0.000	0.000	0.593	-	-	-	-	0.017
1.800	0.000	0.000	0.000	0.001	-	-	0.000	0.000	0.000	0.011	-	-	-	-	-	0.000	0.000	0.000	0.680	-	-	-	-	0.000	0.000	0.000	0.688	-	-	-	-	0.018
1.900	0.000	0.000	0.000	0.001	-	-	0.000	0.000	0.000	0.007	-	-	-	-	-	0.000	0.000	0.000	0.780	-	-	-	-	0.000	0.000	0.000	0.785	-	-	-	-	0.019
2.000	-	-	-	-	-	-	-	-	-	-	-	-	-	-	-	-	-	-	-	-	-	-	-	-	-	-	-	-	-	-	-	0.020
2.200	-	-	-	-	-	-	-	-	-	-	-	-	-	-	-	-	-	-	-	-	-	-	-	-	-	-	-	-	-	-	-	0.022
2.400	-	-	-	-	-	-	-	-	-	-	-	-	-	-	-	-	-	-	-	-	-	-	-	-	-	-	-	-	-	-	-	0.024
2.600	-	-	-	-	-	-	-	-	-	-	-	-	-	-	-	-	-	-	-	-	-	-	-	-	-	-	-	-	-	-	-	0.026
2.800	-	-	-	-	-	-	-	-	-	-	-	-	-	-	-	-	-	-	-	-	-	-	-	-	-	-	-	-	-	-	-	0.028
3.000	-	-	-	-	-	-	-	-	-	-	-	-	-	-	-	-	-	-	-	-	-	-	-	-	-	-	-	-	-	-	-	0.030
3.200	-	-	-	-	-	-	-	-	-	-	-	-	-	-	-	-	-	-	-	-	-	-	-	-	-	-	-	-	-	-	-	0.032
3.400	-	-	-	-	-	-	-	-	-	-	-	-	-	-	-	-	-	-	-	-	-	-	-	-	-	-	-	-	-	-	-	0.034
3.600	-	-	-	-	-	-	-	-	-	-	-	-	-	-	-	-	-	-	-	-	-	-	-	-	-	-	-	-	-	-	-	0.036
Totals:					0	180					0	0	0	0					0.00								0	0	0	0		
Number of Trades:					0						0		0							0.00							0		0			

OPAP (CR)

(Contract Size: 100 Securities, Exercise Style: American, Physical Delivery)

Exercise Price	Call Options														Put Options																		
	April 2015							May 2015							Other Months		April 2015							May 2015							Other Months		Exercise Price
	Open price	Price max	Price min	Last price	Closing price	Volume	Open Interest	Open price	Price max	Price min	Last price	Closing price	Volume	Open Interest	Volume	Open Interest	Open price	Price max	Price min	Last price	Closing price	Volume	Open Interest	Open price	Price max	Price min	Last price	Closing price	Volume	Open Interest	Volume	Open Interest	
6.000	0.000	0.000	0.000	2.64	-	-										0.000	0.000	0.000	0.001	-	-											0.060	
6.400	0.000	0.000	0.000	2.24	-	-										0.000	0.000	0.000	0.001	-	-											0.064	
6.800	0.000	0.000	0.000	1.85	-	-	0.000	0.000	0.000		1.97	-	-			0.000	0.000	0.000	0.004	-	-	0.000	0.000	0.000		0.114	-	-			0.068		
7.200	0.000	0.000	0.000	1.46	-	-	0.000	0.000	0.000		1.65	-	-			0.000	0.000	0.000	0.016	-	-	0.000	0.000	0.000		0.192	-	-			0.072		
7.600	0.000	0.000	0.000	1.09	-	-	0.000	0.000	0.000		1.36	-	-			0.000	0.000	0.000	0.051	-	-	0.000	0.000	0.000		0.300	-	-			0.076		
8.000	0.000	0.000	0.000	0.771	-	-	0.000	0.000	0.000		1.10	-	-			0.000	0.000	0.000	0.128	-	-	0.000	0.000	0.000		0.446	-	-			0.080		
8.400	0.000	0.000	0.000	0.503	-	-	0.000	0.000	0.000		0.883	-	-			0.000	0.000	0.000	0.259	-	-	0.000	0.000	0.000		0.627	-	-			0.084		
8.800	0.000	0.000	0.000	0.307	-	-	0.000	0.000	0.000		0.695	-	-			0.000	0.000	0.000	0.463	-	-	0.000	0.000	0.000		0.838	-	-			0.088		
9.200	0.000	0.000	0.000	0.169	-	-	0.000	0.000	0.000		0.534	-	-			0.000	0.000	0.000	0.725	-	-	0.000	0.000	0.000		1.08	-	-			0.092		
9.600	0.000	0.000	0.000	0.089	-	-	0.000	0.000	0.000		0.414	-	-			0.000	0.000	0.000	1.04	-	-	0.000	0.000	0.000		1.36	-	-			0.096		
10.000	0.000	0.000	0.000	0.042	-	-	0.000	0.000	0.000		0.314	-	-			0.000	0.000	0.000	1.40	-	-	0.000	0.000	0.000		1.66	-	-			0.100		
11.000	0.000	0.000	0.000	0.005	-	-										0.000	0.000	0.000	2.36	-	-										0.110		
12.000	0.000	0.000	0.000	0.008	-	-										0.000	0.000	0.000	3.36	-	-										0.120		
13.000					-	-																									0.130		
14.000					-	-																									0.140		
15.000					-	-																									0.150		
16.000					-	-																									0.160		
17.000					-	-																									0.170		
18.000					-	-																									0.180		
Totals:						0	0							0	0															0	0	0	
Number of Trades:						0								0																0	0	0	

OTE (CR)

(Contract Size: 100 Securities, Exercise Style: American, Physical Delivery)

Exercise Price	Call Options														Put Options																																																		
	April 2015							May 2015							Other Months		April 2015							May 2015							Other Months		Exercise Price																																
	Open price	Price max	Price min	Last price	Closing price	Volume	Open Interest	Open price	Price max	Price min	Last price	Closing price	Volume	Open Interest	Volume	Open Interest	Open price	Price max	Price min	Last price	Closing price	Volume	Open Interest	Open price	Price max	Price min	Last price	Closing price	Volume	Open Interest	Volume	Open Interest																																	
6.000						-	-	0.000	0.000	0.000		2.38	-	-																				0.000	0.000	0.000		0.028	-	-																		0.060							
6.400	0.000	0.000	0.000		1.94	-	-	0.000	0.000	0.000		2.01	-	-																					0.000	0.000	0.000		0.001	-	-	0.000	0.000	0.000		0.062	-	-																	0.064
6.800	0.000	0.000	0.000		1.55	-	-	0.000	0.000	0.000		1.67	-	-																					0.000	0.000	0.000		0.005	-	-	0.000	0.000	0.000		0.119	-	-																	0.068
7.200	0.000	0.000	0.000		1.17	-	-	0.000	0.000	0.000		1.36	-	-																					0.000	0.000	0.000		0.022	-	-	0.000	0.000	0.000		0.206	-	-																	0.072
7.600	0.000	0.000	0.000		0.816	-	-	0.000	0.000	0.000		1.08	-	-																					0.000	0.000	0.000		0.072	-	-	0.000	0.000	0.000		0.329	-	-																	0.076
8.000	0.000	0.000	0.000		0.523	-	-	0.000	0.000	0.000		0.845	-	-																					0.000	0.000	0.000		0.179	-	-	0.000	0.000	0.000		0.490	-	-																	0.080
8.400	0.000	0.000	0.000		0.302	-	-	0.000	0.000	0.000		0.644	-	-																					0.000	0.000	0.000		0.358	-	-	0.000	0.000	0.000		0.688	-	-																	0.084
8.800	0.000	0.000	0.000		0.155	-	-	0.000	0.000	0.000		0.481	-	-																					0.000	0.000	0.000		0.611	-	-	0.000	0.000	0.000		0.925	-	-																	0.088
9.200	0.000	0.000	0.000		0.073	-	-	0.000	0.000	0.000		0.357	-	-																					0.000	0.000	0.000		0.930	-	-	0.000	0.000	0.000		1.20	-	-																	0.092
9.600	0.000	0.000	0.000		0.030	-	-	0.000	0.000	0.000		0.260	-	-																					0.000	0.000	0.000		1.29	-	-	0.000	0.000	0.000		1.50	-	-																	0.096
10.000	0.000	0.000	0.000		0.011	-	-	0.000	0.000	0.000		0.183	-	-																					0.000	0.000	0.000		1.67	-	-	0.000	0.000	0.000		1.83	-	-																	0.100
11.000	0.000	0.000	0.000		0.001	-	-																												0.000	0.000	0.000		2.66	-	-																		0.110						
12.000	0.000	0.000	0.000		0.001	-	-																												0.000	0.000	0.000		3.66	-	-																	0.120							
13.000						-	-																																																			0.130							
14.000						-	-																																																			0.140							
15.000						-	-																																																				0.150						
16.000						-	-																																																				0.160						
Totals:						0	0					0	0	0	0									0	0							0	0	0	0	0	0																												
Number of Trades:						0						0		0										0.00								0		0		0																													

PIRAEUS BANK (CR)

(Contract Size: 100 Securities, Exercise Style: American, Physical Delivery)

Exercise Price	Call Options														Put Options																		
	April 2015							May 2015							Other Months		April 2015							May 2015							Other Months		Exercise Price
	Open price	Price max	Price min	Last price	Closing price	Volume	Open Interest	Open price	Price max	Price min	Last price	Closing price	Volume	Open Interest	Volume	Open Interest	Open price	Price max	Price min	Last price	Closing price	Volume	Open Interest	Open price	Price max	Price min	Last price	Closing price	Volume	Open Interest	Volume	Open Interest	
0.100	0.000	0.000	0.000	0.223	-	-	0.000	0.000	0.000	0.223	-	-	-	-	0.000	0.000	0.000	0.001	-	-	0.000	0.000	0.000	0.001	-	-	-	-	0.001	0.001			
0.200	0.000	0.000	0.000	0.123	-	-	0.000	0.000	0.000	0.125	-	-	-	-	0.000	0.000	0.000	0.001	-	-	0.000	0.000	0.000	0.002	-	-	-	-	0.002	0.002			
0.300	0.000	0.000	0.000	0.032	-	-	0.000	0.000	0.000	0.050	-	-	-	-	0.000	0.000	0.000	0.009	-	-	0.000	0.000	0.000	0.027	-	-	-	-	0.027	0.027			
0.400	0.000	0.000	0.000	0.002	-	130	0.000	0.000	0.000	0.015	-	50	-	-	0.000	0.000	0.000	0.079	-	-	0.000	0.000	0.000	0.092	-	-	-	-	0.092	0.092			
0.500	0.000	0.000	0.000	0.001	-	100	0.000	0.000	0.000	0.004	-	-	-	-	0.000	0.000	0.000	0.177	-	-	0.000	0.000	0.000	0.180	-	-	-	-	0.180	0.180			
0.600	0.000	0.000	0.000	0.002	-	-	0.000	0.000	0.000	0.001	-	-	-	-	0.000	0.000	0.000	0.277	-	-	0.000	0.000	0.000	0.277	-	-	-	-	0.277	0.277			
0.700	0.000	0.000	0.000	0.001	-	-	0.000	0.000	0.000	0.001	-	-	-	-	0.000	0.000	0.000	0.377	-	-	0.000	0.000	0.000	0.377	-	-	-	-	0.377	0.377			
0.800	0.000	0.000	0.000	0.001	-	-	0.000	0.000	0.000	0.002	-	-	-	-	0.000	0.000	0.000	0.477	-	-	0.000	0.000	0.000	0.477	-	-	-	-	0.477	0.477			
0.900	0.000	0.000	0.000	0.002	-	-	0.000	0.000	0.000	0.001	-	-	-	-	0.000	0.000	0.000	0.577	-	-	0.000	0.000	0.000	0.577	-	-	-	-	0.577	0.577			
1.000	0.000	0.000	0.000	0.001	-	-	0.000	0.000	0.000	0.001	-	-	-	-	0.000	0.000	0.000	0.677	-	-	0.000	0.000	0.000	0.677	-	-	-	-	0.677	0.677			
1.100	0.000	0.000	0.000	0.001	-	-	-	-	-	-	-	-	-	-	0.000	0.000	0.000	0.777	-	-	-	-	-	-	-	-	-	-	-	0.777	0.777		
1.200	0.000	0.000	0.000	0.003	-	-	-	-	-	-	-	-	-	-	0.000	0.000	0.000	0.877	-	-	-	-	-	-	-	-	-	-	-	0.877	0.877		
1.300	0.000	0.000	0.000	0.002	-	-	-	-	-	-	-	-	-	-	0.000	0.000	0.000	0.977	-	-	-	-	-	-	-	-	-	-	-	0.977	0.977		
1.400	-	-	-	-	-	-	-	-	-	-	-	-	-	-	-	-	-	-	-	-	-	-	-	-	-	-	-	-	-	-	0.000	0.000	
1.500	-	-	-	-	-	-	-	-	-	-	-	-	-	-	-	-	-	-	-	-	-	-	-	-	-	-	-	-	-	-	0.000	0.000	
1.600	-	-	-	-	-	-	-	-	-	-	-	-	-	-	-	-	-	-	-	-	-	-	-	-	-	-	-	-	-	-	0.000	0.000	
1.700	-	-	-	-	-	-	-	-	-	-	-	-	-	-	-	-	-	-	-	-	-	-	-	-	-	-	-	-	-	-	0.000	0.000	
1.800	-	-	-	-	-	-	-	-	-	-	-	-	-	-	-	-	-	-	-	-	-	-	-	-	-	-	-	-	-	-	0.000	0.000	
1.900	-	-	-	-	-	-	-	-	-	-	-	-	-	-	-	-	-	-	-	-	-	-	-	-	-	-	-	-	-	-	0.000	0.000	
2.000	-	-	-	-	-	-	-	-	-	-	-	-	-	-	-	-	-	-	-	-	-	-	-	-	-	-	-	-	-	-	0.000	0.000	
2.200	-	-	-	-	-	-	-	-	-	-	-	-	-	-	-	-	-	-	-	-	-	-	-	-	-	-	-	-	-	-	0.000	0.000	
2.400	-	-	-	-	-	-	-	-	-	-	-	-	-	-	-	-	-	-	-	-	-	-	-	-	-	-	-	-	-	-	0.000	0.000	
Totals:						0	230						0	50	0	0															0	0	
Number of Trades:						0							0		0																0	0	

PPC (CR)

(Contract Size: 100 Securities, Exercise Style: American, Physical Delivery)

Exercise Price	Call Options														Put Options																		
	April 2015							May 2015							Other Months		April 2015							May 2015							Other Months		Exercise Price
	Open price	Price max	Price min	Last price	Closing price	Volume	Open Interest	Open price	Price max	Price min	Last price	Closing price	Volume	Open Interest	Volume	Open Interest	Open price	Price max	Price min	Last price	Closing price	Volume	Open Interest	Open price	Price max	Price min	Last price	Closing price	Volume	Open Interest	Volume	Open Interest	
3.600	0.000	0.000	0.000	1.78	-	-	-	-	-	-	-	-	-	-	-	0.000	0.000	0.000	0.006	-	-	-	-	-	-	-	-	-	-	-	-	0.036	
3.800	0.000	0.000	0.000	1.58	-	-	-	-	-	-	-	-	-	-	-	0.000	0.000	0.000	0.001	-	-	-	-	-	-	-	-	-	-	-	-	0.038	
4.000	0.000	0.000	0.000	1.38	-	-	0.000	0.000	0.000	1.42	-	-	-	-	-	0.000	0.000	0.000	0.001	-	-	0.000	0.000	0.000	0.031	-	-	-	-	-	0.040		
4.400	0.000	0.000	0.000	0.993	-	-	0.000	0.000	0.000	1.08	-	-	-	-	-	0.000	0.000	0.000	0.011	-	-	0.000	0.000	0.000	0.088	-	-	-	-	-	0.044		
4.800	0.000	0.000	0.000	0.639	-	-	0.000	0.000	0.000	0.777	-	-	-	-	-	0.000	0.000	0.000	0.056	-	-	0.000	0.000	0.000	0.187	-	-	-	-	-	0.048		
5.200	0.000	0.000	0.000	0.354	-	-	0.000	0.000	0.000	0.540	-	-	-	-	-	0.000	0.000	0.000	0.172	-	-	0.000	0.000	0.000	0.350	-	-	-	-	-	0.052		
5.600	0.000	0.000	0.000	0.169	-	-	0.000	0.000	0.000	0.357	-	-	-	-	-	0.000	0.000	0.000	0.387	-	-	0.000	0.000	0.000	0.567	-	-	-	-	-	0.056		
6.000	0.000	0.000	0.000	0.068	-	-	0.000	0.000	0.000	0.226	-	-	-	-	-	0.000	0.000	0.000	0.686	-	-	0.000	0.000	0.000	0.835	-	-	-	-	-	0.060		
6.400	0.000	0.000	0.000	0.023	-	-	0.000	0.000	0.000	0.137	-	-	-	-	-	0.000	0.000	0.000	1.04	-	-	0.000	0.000	0.000	1.15	-	-	-	-	-	0.064		
6.800	0.000	0.000	0.000	0.007	-	-	0.000	0.000	0.000	0.080	-	-	-	-	-	0.000	0.000	0.000	1.43	-	-	0.000	0.000	0.000	1.49	-	-	-	-	-	0.068		
7.200	0.000	0.000	0.000	0.002	-	-	0.000	0.000	0.000	0.046	-	-	-	-	-	0.000	0.000	0.000	1.82	-	-	0.000	0.000	0.000	1.86	-	-	-	-	-	0.072		
7.600	0.000	0.000	0.000	0.002	-	-	0.000	0.000	0.000	0.026	-	-	-	-	-	0.000	0.000	0.000	2.22	-	-	0.000	0.000	0.000	2.24	-	-	-	-	-	0.076		
8.000	0.000	0.000	0.000	0.001	-	-	0.000	0.000	0.000	0.014	-	-	-	-	-	0.000	0.000	0.000	2.62	-	-	0.000	0.000	0.000	2.63	-	-	-	-	-	0.080		
8.400	0.000	0.000	0.000	0.001	-	-	0.000	0.000	0.000	0.008	-	-	-	-	-	0.000	0.000	0.000	3.02	-	-	0.000	0.000	0.000	3.02	-	-	-	-	-	0.084		
8.800					-	-					-	-	-	-	-					-	-					-	-	-	-	-	0.088		
9.200					-	-					-	-	-	-	-					-	-					-	-	-	-	-	0.092		
9.600					-	-					-	-	-	-	-					-	-					-	-	-	-	-	0.096		
10.000					-	-					-	-	-	-	-					-	-					-	-	-	-	-	0.100		
11.000					-	-					-	-	-	-	-					-	-					-	-	-	-	-	0.110		
12.000					-	-					-	-	-	-	-					-	-					-	-	-	-	-	0.120		
13.000					-	-					-	-	-	-	-					-	-					-	-	-	-	-	0.130		
14.000					-	-					-	-	-	-	-					-	-					-	-	-	-	-	0.140		
15.000					-	-					-	-	-	-	-					-	-					-	-	-	-	-	0.150		
16.000					-	-					-	-	-	-	-					-	-					-	-	-	-	-	0.160		
Totals:						0	0					0	0	0	0					0	0					0	0	0	0	0	0		
Number of Trades:						0						0		0						0.00						0		0		0			

PPC (CR)

(Contract Size: 100 Securities, Exercise Style: American, Physical Delivery)

Call Options															Put Options																					
April 2015							May 2015							Other Months			April 2015					May 2015					Other Months			Exercise Price						
Exercise Price	Open price	Price max	Price min	Last price	Closing price	Volume	Open Interest	Open price	Price max	Price min	Last price	Closing price	Volume	Open Interest	Volume	Open Interest	Open price	Price max	Price min	Last price	Closing price	Volume	Open Interest	Open price	Price max	Price min	Last price	Closing price	Volume		Open Interest	Volume	Open Interest			

Lending Products	Underlying Title	Multilateral Transactions[1]					Bilateral Transactions[2]		Stock Borrowing through OTC (volume)[3]
		Open Interest[5]	Volume(Offered)	Average Weighted	Transactions volume	Average Weighted	Transactions Volume	Average Weighted	Transactions Volume
AEGBOR	AEGEAN AIRLINES (CR)	248	19,800	5.31%	---	---	---	---	1
ALPHABOR	ALPHA BANK (CR)	843,385	4,938,371	5.31%	---	---	---	---	58,389,045
AETFBOR	ALPHA ETF FTSE Athex Large Cap	---	---	---	---	---	---	---	---
ALMYBOR	ALUMIL (CR)	---	---	---	---	---	---	---	---
IATRBOR	ATHENS MEDICAL CENTER SA (CR)	---	38,078	5.31%	---	---	---	---	---
TATTBOR	ATTICA BANK S.A. (CR)	---	187,568	5.31%	---	---	---	---	---
OTOELBOR	AUTOHELLAS SA (CR)	---	958	5.31%	---	---	---	---	---
BIOKABOR	BIOKARPET S.A.(CR)	---	---	---	---	---	---	---	---
EEEBOR	CC HBC AG (CR)	1,911	16	5.31%	---	---	---	---	72,576
CENTRBOR	CENTRIC HOLDINGS (CR)	---	16,000	5.31%	---	---	---	---	---
SOLKBOR	CORINTH PIPEWORKS SA (CR)	1,331	933	5.31%	---	---	---	---	---
PLAKRBOR	CRETE PLASTICS SA (CR)	---	---	---	---	---	---	---	---
DROMEBOB	DROMEAS SA (CR)	---	---	---	---	---	---	---	---
ELGEBOR	ELGEKA SA (CR)	---	---	---	---	---	---	---	---
ELLAKTORBOR	ELLAKTOR (CR)	90,101	35,024	5.31%	30,591	5.07%	---	---	---
ELBABOR	ELVAL SA. (CB)	---	35,344	5.31%	---	---	---	---	---
EUROBBOR	EUROBANK ERGASIAS (CR)	41,245	1,515,188	5.31%	---	---	---	---	85,922,384
EUPICBOR	EUROPEAN RELIANCE INSUR. (CR)	---	---	---	---	---	---	---	---
EYDAPBOR	EYDAP S.A. (CR)	1,200	2,461	5.31%	---	---	---	---	17,780
FGEBOR	F.G. EUROPE S.A. (CR)	---	---	---	---	---	---	---	---
FFGRPBOR	FOLLI FOLLIE (CR)	2,242	76,757	5.31%	---	---	---	---	1,078,672
FOYRKBOR	FOURLIS (CR)	1,700	4,969	4.68%	---	---	---	---	3,850
FRIGOBOR	FRIGOGLOSS SA (CR)	2,100	5,519	5.31%	---	---	---	---	---
GEKTERNABOR	GEK TERNA (CR)	3,940	24,807	5.31%	---	---	---	---	---
SARBOR	GR. SARANTIS SA (CR)	---	---	---	---	---	---	---	---
EUPROBOR	GRIVALIA PROPERTIES (CR)	3,583	49,718	5.31%	---	---	---	---	85,561
XAKOBOR	HALKOR SA (CB)	---	48,551	5.31%	---	---	---	---	---
EXAEBOR	HELLENIC EXCHANGES-A.S.E. (CR)	3,000	517,380	5.31%	---	---	---	---	130,000
ELPEBOR	HELLENIC PETROLEUM (CR)	1,000	204,628	5.31%	---	---	---	---	66,000
HYGEIABOR	HYGEIA SA (CR)	---	48,700	5.31%	---	---	---	---	---
IASOBOR	IASO SA (CR)	---	27,878	5.31%	---	---	---	---	---

Stock Lending Notes

[1] - Multilateral contracts Lending or Borrowing as per Methods 8-1, 8-2 and 8-3-3 (According to ATHEX BoD Resolution No.17)

[2] - Bilateral Contracts Lending or Borrowing as per Methods 8-3-1 and 8-3-2 (According to ATHEX BoD Resolution No.20)

[3] - The information concerning OTC Stock Borrowing Transactions is based on the statements of the Dematerialised Securities System (DSS) operators involved and refers to volumes that have been cleared and registered up until the previous working day.

[4] - Average Price (Volume weighted)

[5] - The Data concerning Open Interest before the start of trading session

Lending Products	Underlying Title	Multilateral Transactions[1]					Bilateral Transactions[2]		Stock Borrowing through OTC (volume)[3]
		Open Interest[5]	Volume(Offered)	Average Weighted	Transactions volume	Average Weighted	Transactions Volume	Average Weighted	Transactions Volume
IKTINBOR	IKTINOS HELLAS SA (CR)	---	---	---	---	---	---	---	
LYKBOR	INFORM P. LYKOS SA (CR)	---	483	5.31%	---	---	---	---	
INKATBOR	INTRACOM CONSTR. (CR)	---	---	---	---	---	---	---	
INTRKBOR	INTRACOM HOLDINGS (CR)	---	159,348	5.31%	---	---	---	---	
INLOTBOR	INTRALOT (CR)	74,808	15,369	5.31%	---	---	---	16,968	
AVAXBOR	J & P - AVAX SA (CR)	---	20,175	5.31%	---	---	---	---	
BELABOR	JUMBO SA (CR)	26,019	94,022	5.31%	---	---	---	3,760	
KARTZBOR	KARATZIS SA (CR)	---	---	---	---	---	---	---	
KLEMBOR	KLEEMAN HELLAS SA (CR)	---	23,432	5.31%	---	---	---	---	
KRIBOR	KRI-KRI S.A. (CR)	---	46,369	5.31%	---	---	---	---	
LAMDABOR	LAMDA DEVELOPMENT SA (CR)	---	---	---	---	---	---	10,377	
MIGBOR	MARFIN INVESTMENT GROUP (CR)	3,418	112,418	5.31%	---	---	---	744,474	
METKKBOR	METKA (CR)	6,623	19,008	5.31%	---	---	---	500	
MLSBOR	MLS MULTIMEDIA SA (CR)	---	7,920	5.31%	---	---	---	---	
MOHBOR	MOTOR OIL (CR)	19,182	37,105	5.31%	---	---	---	57,325	
MYTILBOR	MYTILINEOS HOLDINGS (CR)	800	156,903	5.31%	---	---	---	1,800	
ETEBOR	NATIONAL BANK (CR)	70,274	391,867	5.31%	---	---	---	1,954,694	
ETFASEBOR	NBGAM ETF	---	---	---	---	---	---	---	
ETFGT30PBOR	NBGAM ETF GREECE & TURKEY 30	---	---	---	---	---	---	---	
OPAPBOR	OPAP (CR)	85,707	94,002	3.86%	3,000	2.65%	2,881	0.01%	790,541
HTOBOR	OTE (CR)	600	30,615	5.31%	---	---	---	---	186,127
PPABOR	P.P.A. S.A. (CR)	162	649	5.30%	---	---	---	---	151
PAPBOR	PAPOUTSANIS (CR)	---	---	---	---	---	---	---	---
PETROBOR	PETROPOULOS PETROS (CR)	---	---	---	---	---	---	---	---
TPEIRBOR	PIRAEUS BANK (CR)	36,343	100,137	5.31%	26,707	4.10%	---	---	26,966,498
PLAISBOR	PLAISIO COMPUTERS SA (CR)	---	---	---	---	---	---	---	---
PPCBOR	PPC (CR)	36,490	75,621	3.31%	---	---	---	---	935,604
PROFBOR	PROFILE SA (CR)	---	---	---	---	---	---	---	---
QUALBOR	QUALITY & RELIABILITY SA (CR)	---	---	---	---	---	---	---	---
QUESTBOR	QUEST HOLDINGS (CR)	---	822	5.31%	---	---	---	---	---
SIDEBOR	SIDENOR (CR)	2,031	27,542	5.31%	---	---	---	---	---

Stock Lending Notes

[1] - Multilateral contracts Lending or Borrowing as per Methods 8-1, 8-2 and 8-3-3 (According to ATHEX BoD Resolution No.17)

[2] - Bilateral Contracts Lending or Borrowing as per Methods 8-3-1 and 8-3-2 (According to ATHEX BoD Resolution No.20)

[3] - The information concerning OTC Stock Borrowing Transactions is based on the statements of the Dematerialised Securities System (DSS) operators involved and refers to volumes that have been cleared and registered up until the previous working day.

[4] - Average Price (Volume weighted)

[5] - The Data concerning Open Interest before the start of trading session

Lending Products	Underlying Title	Open Interest[5]	Multilateral Transactions[1]				Bilateral Transactions[2]		Stock Borrowing through OTC (volume)[3]	
			Volume(Offered)	Average Weighted	Transactions volume	Average Weighted	Transactions Volume	Average Weighted	Transactions Volume	
OLYMPBOR	TECHNICAL OLYMPIC SA (CR)	---	---	---	---	---	---	---	---	
TENERGYBOR	TERNA ENERGY (CR)	700	28,010	5.31%	---	---	---	---	---	
EYAPSBOR	THESSALONIKA WATER & SEWERAGE	---	798	5.31%	---	---	---	---	---	
PLATBOR	THRACE PLASTICS SA (CR)	---	42,700	5.31%	---	---	---	---	---	
TITKBOR	TITAN CEMENT (CR)	35,850	215,650	3.31%	50	2.65%	---	---	375,511	
OLTHBOR	TPA SA (CR)	---	3,438	5.31%	---	---	---	---	---	
TRASTORBOR	TRASTOR REAL EST. INV. CO.(CR)	---	30,000	5.31%	---	---	---	---	---	
VIOBOR	VIOHALCO SA/NV (CB)	13,377	8,746	5.31%	---	---	---	---	---	

Stock Lending Notes

[1] - Multilateral contracts Lending or Borrowing as per Methods 8-1, 8-2 and 8-3-3 (According to ATHEX BoD Resolution No.17)

[2] - Bilateral Contracts Lending or Borrowing as per Methods 8-3-1 and 8-3-2 (According to ATHEX BoD Resolution No.20)

[3] - The information concerning OTC Stock Borrowing Transactions is based on the statements of the Dematerialised Securities System (DSS) operators involved and refers to volumes that have been cleared and registered up until the previous working day.

[4] - Average Price (Volume weighted)

[5] - The Data concerning Open Interest before the start of trading session

Sectors codification for listed companies

533	-	Exploration & Production	537	-	Integrated Oil & Gas
1353	-	Commodity Chemicals	1357	-	Specialty Chemicals
1753	-	Aluminum	1755	-	Nonferrous Metals
1757	-	Steel	1775	-	General Mining
2353	-	Building Materials & Fixtures	2357	-	Heavy Construction
2723	-	Containers & Packaging	2727	-	Diversified Industrials
2733	-	Electrical Components & Equipment	2753	-	Commercial Vehicles & Trucks
2757	-	Industrial Machinery	2773	-	Marine Transportation
2777	-	Transportation Services	2791	-	Business Support Services
2797	-	Industrial Suppliers	3535	-	Distillers & Vintners
3537	-	Soft Drinks	3573	-	Farming Fishing & Plantations
3577	-	Food Products	3722	-	Durable Household Products
3726	-	Furnishings	3728	-	Home Construction
3747	-	Toys	3763	-	Clothing & Accessories
3765	-	Footwear	3767	-	Personal Products
3785	-	Tobacco	4533	-	Health Care Providers
4535	-	Medical Equipment	4577	-	Pharmaceuticals
5337	-	Food Retailers & Wholesalers	5371	-	Apparel Retailers
5373	-	Broadline Retailers	5375	-	Home Improvement Retailers
5379	-	Specialty Retailers	5553	-	Broadcasting & Entertainment
5555	-	Media Agencies	5557	-	Publishing
5751	-	Airlines	5752	-	Gambling
5753	-	Hotels	5755	-	Recreational Services
5757	-	Restaurants & Bars	5759	-	Travel & Tourism
6535	-	Fixed Line Telecommunications	6575	-	Mobile Telecommunications
7535	-	Conventional Electricity	7537	-	Alternative Electricity
7577	-	Water	8355	-	Banks
8534	-	Insurance Brokers	8536	-	Property & Casualty Insurance
8633	-	Real Estate Holding & Development	8637	-	Real Estate Services
8671	-	Industrial & Office REITs	8675	-	Specialty REITs
8775	-	Specialty Finance	8777	-	Investment Services
8985	-	Equity Investment Instruments	9533	-	Computer Services
9535	-	Internet	9537	-	Software
9572	-	Computer Hardware	9574	-	Electronic Office Equipment
9578	-	Telecommunications Equipment	12003	-	ETF



ATHEXGROUP
Ομίλος Χρηματιστηρίου Αθηνών

Λεωφ. Αθηνών 110 104 42 Αθήνα
110, Athinon Ave. GR 104 42 Athens
tel. (+30)210-33.66.800, fax (+30)210-33.66.101
www.athexgroup.gr