

Daily Official List

Hellenic Exchanges – Athens Stock Exchange S.A.

Thursday, 5 March, 2015
Year: 136 Trading Day No: 43

Disclaimer:

Hellenic Exchanges-Athens Exchange endeavours to ensure that the data and other material ("Information") presented on the Daily Official List are accurate and complete, but it is not liable for any errors or omissions of data or /and for the accuracy, credibility, updating and completeness of the aforesaid information nor it has any liability arising directly or indirectly from the use of the above Information.

The Company is not liable for the accuracy of the data included in listed companies' announcements. Only the sender of such an announcement is fully and solely liable for any infringement of third party's rights from the content of such announcement. All contents of the Daily Official List are provided only for information purposes and do not constitute investment advice or solicitation to invest in securities or other products listed for trading on the Exchange.

You acknowledge and agree that the Company is the owner of any property rights related to any information appearing on the Daily Official List including intellectual property rights copyright, trademarks, etc.

The above data are a property of the Hellenic Exchanges-Athens Exchange and are copyright protected. Users are forbidden to reproduce, modify, copy, sale, transmit or redistribute, by all reproduction means and methods, part or the whole of the above data, without reference to their source.

The commercial exploitation of these data is, also, forbidden by third parties. Hellenic Exchanges-Athens Exchange does not carry any responsibility, direct or indirect, derived from usage or accidental alteration of the above data when used by third parties.

Hellenic Exchanges – Athens Stock Exchange S.A.

110 Athinon Ave., 10442 Athens, Tel: (210) 33.66.800, Fax: (210) 32.13.938

www.athex.gr

Thessalonica Stock Exchange Center (T.S.E.C)

16-18 Katouni Str., Thessalonica 546 25 Tel: (2310) 567.667, Fax: (2310) 530.545

Athex Members Guarantee Fund

14-16 Fidiou Str., Athens 106 78, Tel: (210) 33.04.682, Fax: (210) 33.04.155

Hellenic Republic Capital Market Commission

1 Kolokotroni Str. & 1 Stadiou Str., Athens 10562 Tel: (210) 33.77.100 Fax: (210) 33.77.173

Table of Contents

Section 1: Statistical Figures of Securities, Derivatives and Lending

Summary of Markets

Athex Indices

Analytic Figures for Athex Market's Boards and Categories

Trading Details by Athex Sectors and Financial Instruments (ETFs)

Top 10 best & worst performing Shares

Derivatives Summary

Section 2: Analytic Figures of Shares Transactions

Analytic Figures of Shares Transactions

Shares' Notes

Section 3: Figures of Securities Transactions

Securities Blocks Details

Shares Rights Details

Shares Short Selling

Stock Borrowing

Shares Forced Sales

Forced Sales Registered Shares

Exchange Traded Funds (ETFs) Characteristics

Section 5: Bonds traded in Fixed Income Assets Market

Corporate Bonds

Government Bonds

Treasury Bills & Zero Coupon Government Bonds

Government Bonds Traded with the Open Outcry Method

State Banks Bonds

Section 6: Additional Infos

Athex & ATHEXClear Members List

List of Stocks under Market Making operations

Section 7: Derivatives Market Analytic Figures

Index Futures

Stock Futures

Index Options

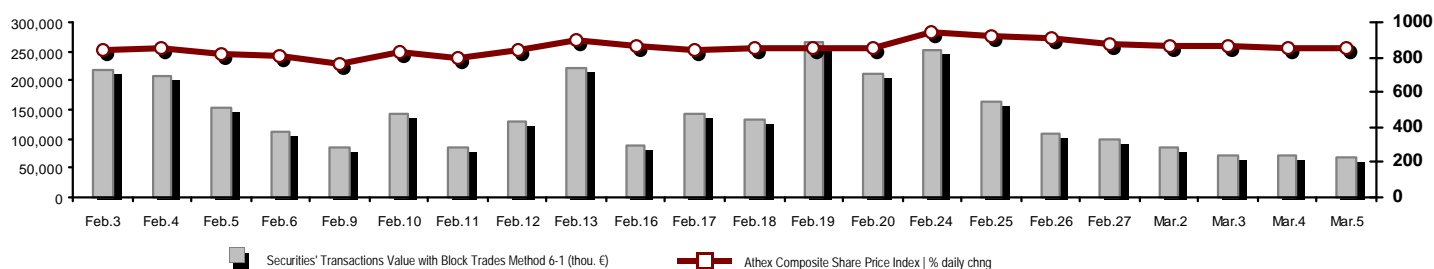
Stock Options

Stock Lending Analytic Figures

Appendix A: Sectors codification for listed companies

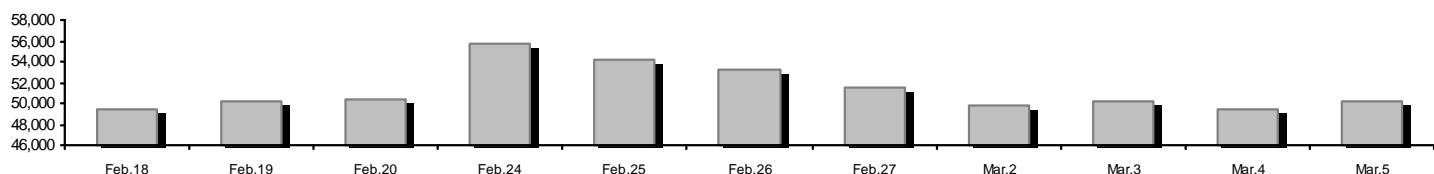
Summary of Markets

Athex Composite Share Price Index vs Shares and Derivatives Transactions Value

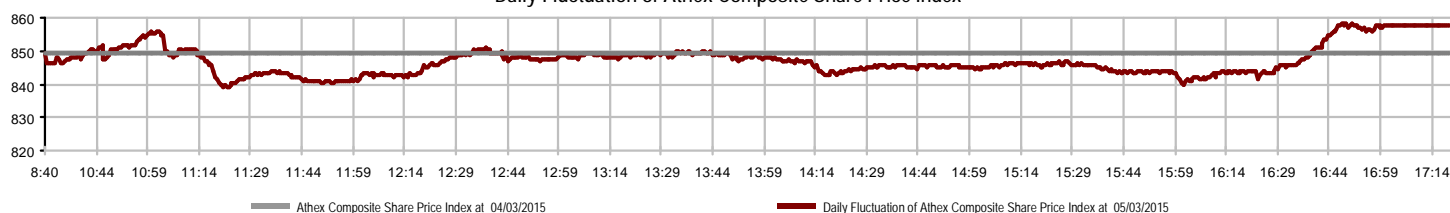


Athex Capitalisation (mill. €) **: 50,206.48	Derivatives Total Open Interest: 419,239
Daily change: mill. € %: 786.34 1.59%	in Index Futures % daily chng: 38,846 -1.43%
Yearly Avg Capitalisation: mill. € % chng prev year Avg: 49,853.91 -28.02%	in Stock Futures % daily chng: 371,118 0.78%
Athex Composite Share Price Index % daily chng: 857.54 0.99%	in Index Options % daily chng: 8,600 14.22%
Athex Composite Share Price Index Capitalisation (mill. €): 44,877.07	in Stock Options % daily chng: 675 13.45%
Daily change (mill. €): 829.89	
Securities' Transactions Value with Block Trades Method 6-1 (thou. €): 67,435.09	Derivatives Contracts Volume: 40,399
Daily change: thou. € %: -3,693.48 -5.19%	Daily change: pieces %: -12,056 -22.98%
YtD Avg Trans. Value: thou. € % chng prev year Avg: 125,087.79 -1.55%	YtD Avg Derivatives Contracts % chng prev year Avg: 72,896 32.99%
Blocks Transactions Value of Method 6-1 (thou. €): 12,387.36	Derivatives Trades Number: 2,969
Blocks Transactions Value of Method 6-2 & 6-3 (thou. €): 0.00	Daily change: number %: -590 -16.58%
Bonds Transactions Value (thou. €): 0.00	YtD Avg Derivatives Trades number % chng prev year Avg: 5,070 21.41%
Securities' Transactions Volume (thou. Pieces): 197,561.15	Lending Total Open Interest: 2,452,248
Daily change: thou. pieces %: 15,111.11 8.28%	Daily change: pieces %: -294,918 -10.74%
YtD Avg Volume: thou. pieces % chng prev year Avg: 198,818.64 109.26%	Lending Volume (Multilateral/Bilateral): 17,459
Blocks Transactions Volume of Method 6-1 (thou. Pieces): 90,618.72	Daily change: pieces %: -16,110 -47.99%
Blocks Transactions Volume of Method 6-2 & 6-3 (thou. Pieces): 0.00	Multilateral Lending: 17,459
Bonds Transactions Volume (thou. pieces): 0.00	Bilateral Lending: 0
Securities' Trades Number: 25,114	Lending Trades Number: 12
Daily change: number %: -2,154 -7.90%	Daily change: thou. € %: -10 -45.45%
YtD Avg Derivatives Trades number % chng prev year Avg: 38,655 33.83%	Multilateral Lending Trades Number: 12
Number of Blocks Method 6-1: 4	Bilateral Lending Trades Number: 0
Number of Blocks Method 6-2 & 6-3: 0	
Number of Bonds Transactions: 0	

Athex Capitalisation (mill. €) **



Daily Fluctuation of Athex Composite Share Price Index



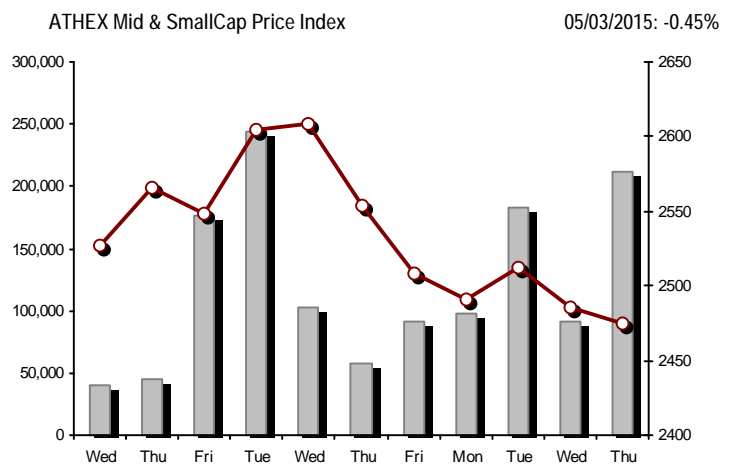
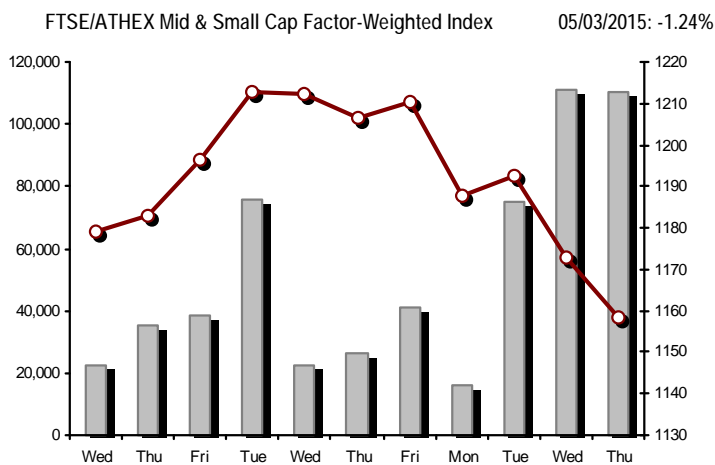
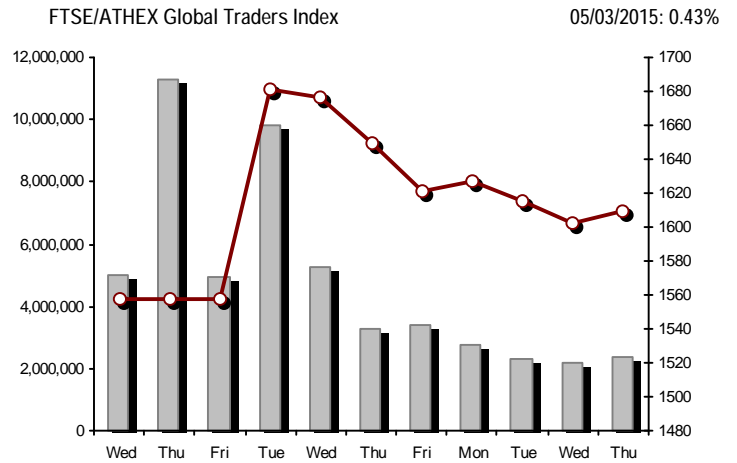
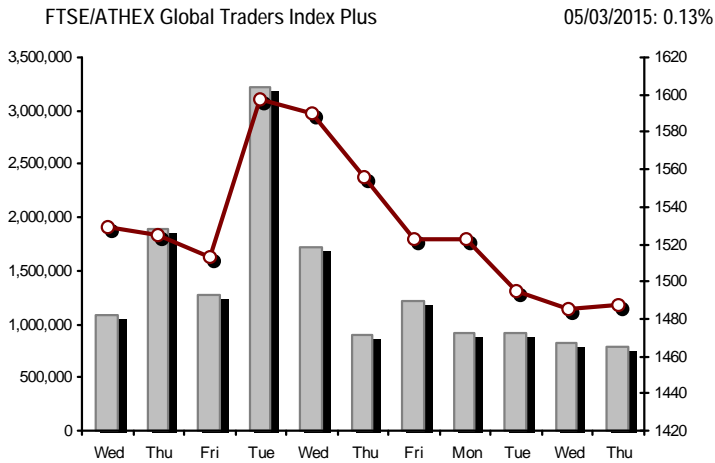
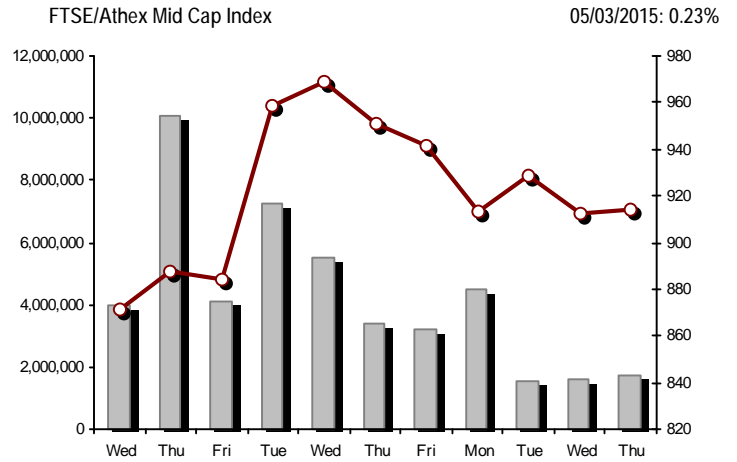
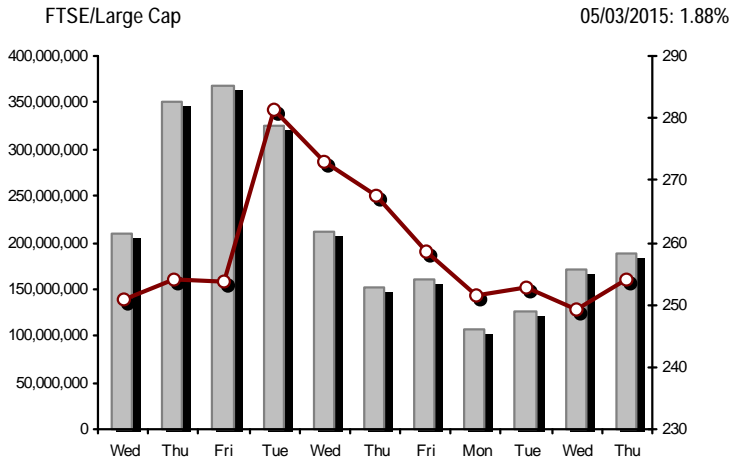
Athex Indices

Index name	05/03/2015	04/03/2015	pts.	%	Min	Max	Year min	Year max	Year change
Athex Composite Share Price Index	857.54 #	849.16	8.38	0.99%	838.93	858.19	708.61	945.81	3.80% #
FTSE/Athex Large Cap	254.02 #	249.33	4.69	1.88%	246.69	254.51	209.48	283.37	-4.09% €
FTSE/ATHEX Custom Capped	857.29 €	869.91	-12.63	-1.45%			724.23	956.79	-1.61% €
FTSE/ATHEX Custom Capped - USD	680.28 €	697.56	-17.29	-2.48%			588.87	777.68	-10.01% €
FTSE/Athex Mid Cap Index	914.07 #	912.01	2.06	0.23%	895.15	918.45	717.54	984.77	18.25% #
FTSE/ATHEX-CSE Banking Index	540.22 #	508.16	32.06	6.31%	501.25	540.22	402.80	774.70	-25.79% €
FTSE/ATHEX Global Traders Index Plus	1,487.53 #	1,485.57	1.96	0.13%	1,469.14	1,493.56	1,227.52	1,604.84	15.95% #
FTSE/ATHEX Global Traders Index	1,609.89 #	1,602.93	6.96	0.43%	1,584.47	1,610.21	1,344.70	1,698.65	11.91% #
FTSE/ATHEX Mid & Small Cap Factor-Weighted Ind	1,158.26 €	1,172.86	-14.60	-1.24%	1,157.85	1,181.35	1,076.89	1,223.09	5.67% #
Greece & Turkey 30 Price Index	620.63 €	630.42	-9.79	-1.55%	613.62	626.89	613.62	768.95	-8.71% €
ATHEX Mid & SmallCap Price Index	2,474.51 €	2,485.67	-11.16	-0.45%	2,463.74	2,498.24	2,372.76	2,635.74	1.43% #
FTSE/Athex Market Index	615.79 #	604.96	10.83	1.79%	598.84	616.50	507.68	685.04	-3.20% €
FTSE Med Index	5,367.05 #	5,350.71	16.34	0.31%			4,930.94	5,386.51	6.55% #
Athex Composite Index Total Return Index	1,255.81 #	1,243.53	12.28	0.99%	1,228.55	1,256.76	1,037.71	1,385.07	3.98% #
FTSE/Athex Large Cap Total Return	345.50 #	339.12	6.38	1.88%			285.87	382.72	-3.85% €
FTSE/ATHEX Large Cap Net Total Return	1,028.76 #	1,009.79	18.97	1.88%	999.08	1,030.76	848.38	1,147.63	-3.86% €
FTSE/ATHEX Custom Capped Total Return	903.70 €	917.01	-13.31	-1.45%			763.44	1,008.59	-1.43% €
FTSE/ATHEX Custom Capped - USD Total Return	717.10 €	735.32	-18.22	-2.48%			620.75	819.78	-9.84% €
FTSE/Athex Mid Cap Total Return	1,162.26 #	1,159.64	2.62	0.23%			928.33	1,231.75	18.25% #
FTSE/ATHEX-CSE Banking Total Return Index	503.77 #	473.87	29.90	6.31%			380.70	708.30	-25.83% €
Greece & Turkey 30 Total Return Index	763.57 €	785.18	-21.61	-2.75%			763.57	919.96	-7.23% €
Hellenic Mid & Small Cap Index	897.83 €	902.16	-4.33	-0.48%	884.87	908.22	716.61	994.59	16.72% #
FTSE/Athex Banks	713.76 #	671.40	42.36	6.31%	662.28	713.76	532.20	1,023.60	-25.79% €
FTSE/Athex Insurance	1,443.52 #	1,411.91	31.61	2.24%	1,411.91	1,443.52	1,369.77	1,538.35	-1.44% €
FTSE/Athex Financial Services	1,235.36 #	1,226.91	8.45	0.69%	1,191.85	1,239.58	926.91	1,400.60	23.34% #
FTSE/Athex Industrial Goods & Services	2,342.70 €	2,352.81	-10.11	-0.43%	2,304.17	2,366.97	1,881.51	2,660.41	19.89% #
FTSE/Athex Retail	4,031.10 #	4,003.01	28.09	0.70%	3,917.04	4,031.10	3,336.67	4,531.02	6.02% #
FTSE/ATHEX Real Estate	2,549.80 €	2,615.72	-65.92	-2.52%	2,512.09	2,616.19	2,181.63	2,800.26	11.74% #
FTSE/Athex Personal & Household Goods	5,075.28 #	5,025.87	49.41	0.98%	4,978.63	5,175.85	3,847.16	5,680.33	11.48% #
FTSE/Athex Food & Beverage	6,058.65 #	6,038.92	19.73	0.33%	6,000.06	6,088.98	5,066.70	6,105.28	3.43% #
FTSE/Athex Basic Resources	2,586.96 #	2,571.07	15.89	0.62%	2,510.18	2,589.21	1,753.11	2,916.96	34.16% #
FTSE/Athex Construction & Materials	2,534.91 €	2,560.54	-25.63	-1.00%	2,511.20	2,580.66	2,059.46	2,705.46	16.02% #
FTSE/Athex Oil & Gas	2,077.73 #	2,051.35	26.38	1.29%	2,014.57	2,077.73	1,618.74	2,208.30	14.49% #
FTSE/Athex Chemicals	7,135.84 #	6,983.44	152.40	2.18%	6,944.84	7,174.31	4,784.62	7,336.99	39.30% #
FTSE/Athex Media	1,920.67 -	1,920.67	0.00	0.00%	1,920.67	1,920.67	1,359.24	2,061.03	-6.81% €
FTSE/Athex Travel & Leisure	1,601.04 #	1,569.21	31.83	2.03%	1,565.90	1,607.06	1,238.26	1,741.96	4.43% #
FTSE/Athex Technology	737.06 €	740.53	-3.47	-0.47%	730.17	747.51	659.36	786.22	1.51% #
FTSE/Athex Telecommunications	2,515.85 #	2,493.83	22.02	0.88%	2,449.79	2,515.85	1,995.61	2,606.68	0.44% #
FTSE/Athex Utilities	2,365.65 €	2,444.01	-78.36	-3.21%	2,320.20	2,458.79	1,711.47	2,830.02	12.73% #
FTSE/Athex Health Care	134.03 #	131.65	2.38	1.81%	130.06	134.82	115.79	163.37	-7.14% €
Athex All Share Index	176.46 #	173.68	2.78	1.60%			146.74	196.00	-5.10% €
Hellenic Corporate Bond Index	93.13 €	93.21	-0.08	-0.08%			87.18	94.45	-0.78% €
Hellenic Corporate Bond Price Index	90.84 €	90.93	-0.09	-0.10%			85.19	92.77	-1.81% €

Note 1: Greece & Turkey 30 Pr data is the indicative at 17:20, whereas FTSE/ATHEX Custom Capped, FTSE/ATHEX Custom Capped - USD, FTSE/ATHEX Custom Capped TR, FTSE/ATHEX Custom Capped - USD TR, FTSE/Med 100 & Greece & Turkey 30 Rt., Hellenic Corporate Bond Price Index, Hellenic Corporate Bond Index closing prices refer to the previous trading day of 03/03/2015.

Note 2: The Hellenic Mid & Small Cap Index is a Customized index calculated by the Athens Exchange.

Athex Indices



Indices volume of transactions

Indices closing prices

Analytic Figures for Athex Market's Boards and Categories

	Total Traded Securities	Main Market	Low Dispersion	Other Categories (*)	Exchange Traded Funds (ETFs)	Warrants
Totals	133	106	7	14	3	3
Gain / Lose / Same:	61 / 51 / 21	51 / 43 / 12	0 / 4 / 3	5 / 3 / 6	2 / 1 / 0	3 / 0 / 0
Athex Capitalisation (mill. €) **	50,206.48	48,319.90	1,563.97	322.61		
Daily Average Trans/ons Value(thou.€)	125,087.79	121,994.16	76.91	83.12	48.18	3,125.66
Transactions Value	67,435.09	66,141.76	122.42	40.84	0.68	1,129.39
Main Board:	55,047.73	53,754.40	122.42	40.84	0.68	1,129.39
Blocks Board 6_2_3:	12,387.36	12,387.36	0.00	0.00	0.00	0.00
Forced Sales Board:	0.00	0.00	0.00	0.00	0.00	0.00
Special Terms Board:	0.00	0.00	0.00	0.00	0.00	0.00
Daily Average Transactions Volume	198,818,640	189,780,584	107,067	234,330	16,860	8,986,835
Transactions Volume	197,561,149	192,167,272	22,463	274,082	265	5,097,067
Main Board:	106,942,430	101,548,553	22,463	274,082	265	5,097,067
Blocks Board 6_2_3:	90,618,719	90,618,719	0	0	0	0
Forced Sales Board:	0	0	0	0	0	0
Special Terms Board:	0	0	0	0	0	0
Daily Average Number of Trades	38,655	36,561	37	79	8	1,971
Number of Trades	25,114	23,432	80	65	5	1,532
Main Board:	25,110	23,428	80	65	5	1,532
Blocks Board 6_2_3:	4	4	0	0	0	0
Forced Sales Board:	0	0	0	0	0	0
Special Terms Board:	0	0	0	0	0	0

(*) Summarised Transactions figures for Under Deletion and Under Supervision Categories. (**) The Market Capitalization of the Companies that belong in the Under Supervision Status is not included.

Trading Details by Athex Sectors and Financial Instruments (ETFs)

Code	Sectors	Gain / Lose / Same	Number of Trades	Transactions Volume	Transactions Value	% of Total Trans. Value
8300	- Banks	9 / 1 / 0	14,215	192,588,947	41,595,797.62	61.68%
1700	- Basic Resources	3 / 1 / 4	712	228,347	749,604.46	1.11%
1300	- Chemicals	2 / 2 / 0	66	27,119	38,429.07	0.06%
2300	- Construction & Materials	5 / 5 / 5	1,141	463,779	1,805,388.49	2.68%
12000	- Financial Instruments	2 / 1 / 0	5	265	682.53	0.00%
8700	- Financial Services	2 / 1 / 0	579	400,307	620,753.26	0.92%
3500	- Food & Beverage	2 / 8 / 1	236	103,784	863,275.12	1.28%
4500	- Health Care	3 / 0 / 0	86	95,327	16,564.28	0.02%
2700	- Industrial Goods & Services	6 / 8 / 1	757	223,948	1,034,822.64	1.53%
8500	- Insurance	1 / 0 / 0	2	2	2.73	0.00%
5500	- Media	1 / 0 / 2	6	3,160	1,245.27	0.00%
500	- Oil & Gas	1 / 1 / 0	760	176,851	933,794.92	1.38%
3700	- Personal & Household Goods	8 / 3 / 2	547	314,945	1,302,920.02	1.93%
8600	- Real Estate	2 / 3 / 1	505	323,923	1,167,086.66	1.73%
5300	- Retail	3 / 2 / 1	262	55,391	907,801.55	1.35%
9500	- Technology	2 / 6 / 3	166	303,837	111,289.68	0.17%
6500	- Telecommunications	1 / 0 / 0	1,467	882,129	7,979,038.25	11.83%
5700	- Travel & Leisure	6 / 6 / 1	1,575	745,067	4,724,998.12	7.01%
7500	- Utilities	2 / 3 / 0	2,027	624,021	3,581,591.67	5.31%

Top 10 best & worst performing Shares

Main Market

With positive Price change			With negative Price change		
	Closing price	change		Closing price	change
BIOKARPET S.A.(CR)	0.240	9.59% #	EYDAP S.A. (CR)	6.25	-5.73% €
EUROBANK ERGASIAS (CR)	0.129	7.50% #	BANK OF GREECE (CR)	10.85	-5.32% €
NATIONAL BANK (CR)	1.34	7.20% #	KRI-KRI S.A. (CR)	1.75	-4.89% €
TRASTOR REAL EST. INV. CO.(CR)	1.30	6.56% #	VIOHALCO SA/NV (CB)	3.38	-3.98% €
KYRIAKIDIS MARBLES SA (CR)	2.35	6.33% #	GRIVALIA PROPERTIES (CR)	8.25	-3.96% €
PIRAEUS BANK (CR)	0.505	6.32% #	SIDENOR (CR)	0.689	-3.37% €
ATTICA BANK S.A. (CR)	0.073	5.80% #	PPC (CR)	6.19	-3.28% €
ALPHA BANK (CR)	0.354	4.12% #	THESSALONIKA WATER & SEWERAGE	2.82	-2.42% €
MOTOR OIL (CR)	7.52	3.72% #	TPA SA (CR)	22.45	-2.35% €
TERNA ENERGY (CR)	2.79	3.33% #	P.P.A. S.A. (CR)	14.15	-2.01% €
ELTECH ANEMOS S.A. (CR)	0.713	3.33% #			
With the highest Transactions Value			With the highest Transactions Volume		
	Value (thou. €)	change		Volume	change
EUROBANK ERGASIAS (CR)	18,437.02	7.50% #	EUROBANK ERGASIAS (CR)	149,640,087	7.50% #
NATIONAL BANK (CR)	9,913.25	7.20% #	PIRAEUS BANK (CR)	14,427,936	6.32% #
OTE (CR)	7,979.04	0.88% #	ALPHA BANK (CR)	13,602,283	4.12% #
PIRAEUS BANK (CR)	7,064.29	6.32% #	NATIONAL BANK (CR)	7,674,328	7.20% #
ALPHA BANK (CR)	4,687.30	4.12% #	ATTICA BANK S.A. (CR)	1,126,405	5.80% #
OPAP (CR)	4,074.62	2.53% #	BANK OF CYPRUS (CR)	1,012,800	0.52% #
PPC (CR)	2,858.90	-3.28% €	OTE (CR)	882,129	0.88% #
JUMBO SA (CR)	1,018.01	0.96% #	OPAP (CR)	461,255	2.53% #
TITAN CEMENT (CR)	947.00	-1.96% €	PPC (CR)	459,014	-3.28% €
FOLLI FOLLIE (CR)	900.22	0.72% #	MARFIN INVESTMENT GROUP (CR)	306,438	2.27% #

Note: Stocks that are not included in the "Low Dispersion" and "Under Supervision" categories, and the transactions value is more than 10,000 €.

Derivatives Summary

	Number of Trades	Volume	Open Interest
Index Futures	824	6,355	38,846
FTSE/Athex Large Cap	824	6,355	38,846
Stock Futures	2,121	32,697	371,118
ALPHA BANK (CR)	147	3,339	46,237
CC HBC AG (CR)	3	13	191
CORINTH PIPEWORKS SA (CR)	13	49	513
ELLAKTOR (CR)	14	76	1,476
EUROBANK ERGASIAS (CR)	290	10,429	140,972
EYDAP S.A. (CR)	15	34	154
FOLLI FOLLIE (CR)	14	35	178
FRIGOGLASS SA (CR)	3	6	347
GEK TERNA (CR)	10	52	7,648
GRIVALIA PROPERTIES (CR)	10	17	179
HELLENIC EXCHANGES-A.S.E. (CR)	32	68	1,274
HELLENIC PETROLEUM (CR)	21	50	4,390
INTRALOT (CR)	25	91	411
JUMBO SA (CR)	70	219	665
MARFIN INVESTMENT GROUP (CR)	18	223	27,090
METKA (CR)	23	54	629
MOTOR OIL (CR)	25	85	431
MYTILINEOS HOLDINGS (CR)	42	137	3,237
NATIONAL BANK (CR)	473	8,370	30,263
OPAP (CR)	106	315	1,761
OTE (CR)	114	607	7,029
P.P.A. S.A. (CR)	7	11	169
PIRAEUS BANK (CR)	386	7,621	90,035
PPC (CR)	204	643	2,896
SIDENOR (CR)	5	14	642
TERNA ENERGY (CR)	12	20	1,573
TITAN CEMENT (CR)	15	45	474
VIOHALCO SA/NV (CB)	24	74	254
Index Options	21	1,267	8,600
FTSE/Athex Large Cap	21	1,267	8,600
Stock Options	3	80	675
ALPHA BANK (CR)	0	0	40
NATIONAL BANK (CR)	0	0	350
OPAP (CR)	0	0	0
OTE (CR)	0	0	75
PIRAEUS BANK (CR)	3	80	185
PPC (CR)	0	0	25
Total Derivatives Traded	2,969	40,399	419,239

Number of Outstanding Securities	Nominal Value	Dividends [1] 2012 2013 2014	Date of Last Coupon Dividend [2]	Date of Last Coupon Right	Note	Shares	Closing price	% change	Previous closing price/date	Open price	Price min	Price max	Last price	Avg price	Last Bid [7]	Last Ask [7]	P/E after	Year	Volume	Trades	Transactions Value[8]	Company Mkt Value (thou. €)	Year low	Year high	Sector[4]
7,847,611	1.20	---	---	---	01/08/2007	28/09/2011	4939	EDRASIS - C. PSALLIDAS SA (CR)	0.150	---	0.150	04/03/2015	---	---	---	---	---	---	---	---	---	1,177.14	0.150	0.150	2357
5,750,000	0.300	---	---	---	12/12/2008	12/12/2011	4929	ELECTRONIKI ATHINON SA (CR)	0.480	---	0.480	04/03/2015	---	---	---	---	---	---	---	---	---	2,760.00	0.480	0.480	5375
24,605,397	0.400	---	---	---	29/06/1995	27/05/2002	4651	EMPORIKOS DESMOS SA (CR)	0.080	---	0.080	04/03/2015	---	---	---	---	---	---	---	---	---	2,134.04	0.080	0.080	3722
1,182,903	0.400	---	---	---	01/07/1996	27/05/2002	4652	EMPORIKOS DESMOS SA (PR)	0.140	---	0.140	04/03/2015	---	---	---	---	---	---	---	---	---	2,134.04	0.140	0.140	3722
7,326,648	1.00	---	---	---	26/07/2006	24/07/2001	4921	FINTEXPORT SA (CR)	0.328	---	0.328	04/03/2015	---	---	---	---	---	---	---	---	---	2,403.14	0.328	0.328	3763
13,692,227	1.47	---	---	---	07/07/2006	08/10/1999	5049	HELLENIC FABRICS SA (CR)	0.117	---	0.117	04/03/2015	---	---	---	---	---	---	---	---	---	1,601.99	0.117	0.117	3763
24,619,524	0.500	---	---	---	10/10/1986	30/12/2002	4914	KERAMIA-ALLATINI (CR)	0.088	---	0.088	04/03/2015	---	---	---	---	---	---	---	---	---	2,166.52	0.088	0.088	8633
7,840,373	1.20	---	---	---	18/07/2002	05/03/2003	4765	KLONATEX SA (PR)	0.080	---	0.080	04/03/2015	---	---	---	---	---	---	---	---	---	1,453.75	0.080	0.080	3763
20,663,047	1.20	---	---	---	21/08/2000	05/03/2003	4764	KLONATEX SA (CR)	0.040	---	0.040	04/03/2015	---	---	---	---	---	---	---	---	---	1,453.75	0.040	0.040	3763
17,544,600	0.600	---	---	---	03/07/2000	01/08/2000	4868	KOYMBAS SYNERGY GROUP (CR)	0.132	---	0.132	04/03/2015	---	---	---	---	---	---	---	---	---	2,315.89	0.132	0.132	8775
15,015,000	1.60	---	---	---	01/07/2002	02/02/2000	4603	MAXIM C.M. PERTSINIDIS SA (CB)	0.100	---	0.100	04/03/2015	---	---	---	---	---	---	---	---	---	1,501.50	0.100	0.100	3763
66,937,526	0.700	---	---	---	13/08/2010	21/05/2003	5003	MICHANIKI SA (CR)	0.100	---	0.100	04/03/2015	---	---	---	---	---	---	---	---	---	9,186.78	0.100	0.100	2357
25,968,987	0.700	---	---	---	13/08/2010	21/05/2003	5004	MICHANIKI SA (PR)	0.096	---	0.096	04/03/2015	---	---	---	---	---	---	---	---	---	9,186.78	0.096	0.096	2357
13,555,100	1.00	---	---	---	08/07/2005	08/07/2005	4576	MICROLAND COMPUTERS SA (CR)	0.640	---	0.640	04/03/2015	---	---	---	---	---	---	---	---	---	8,675.26	0.640	0.640	5379
23,463,874	0.800	---	---	---	23/05/2003	21/12/1999	4918	NEORION SA (CR)	0.125	---	0.125	04/03/2015	---	---	---	---	---	---	---	---	---	2,932.98	0.125	0.125	2753
42,501,273	0.300	---	---	---	26/06/2007	10/08/2009	4993	NUTRIART (CR)	0.049	---	0.049	04/03/2015	---	---	---	---	---	---	---	---	---	2,082.56	0.049	0.049	3577
20,210,127	1.53	---	---	---	27/06/1997	20/03/2000	5061	PARNASSOS ENTERP. (CR)	0.070	---	0.070	04/03/2015	---	---	---	---	---	---	---	---	---	1,414.71	0.070	0.070	8775
25,583,146	0.300	---	---	---	25/06/2001	03/12/2008	4723	PETZETAKIS SA (CR)	0.260	---	0.260	04/03/2015	---	---	---	---	---	---	---	---	---	6,651.62	0.260	0.260	1357
9,550,386	0.500	---	---	---	01/07/1997	12/06/2008	4626	PRAXITELIO SA (CR)	0.390	---	0.390	04/03/2015	---	---	---	---	---	---	---	---	---	4,430.09	0.390	0.390	4533
1,306,368	0.500	---	---	---	01/07/1997	12/06/2008	4627	PRAXITELIO SA (PR)	0.540	---	0.540	04/03/2015	---	---	---	---	---	---	---	---	---	4,430.09	0.540	0.540	4533
62,683,822	0.300	---	---	---	27/05/2008	09/01/2006	4830	PROTON BANK S.A. (CR)	0.180	---	0.180	04/03/2015	---	---	---	---	---	---	---	---	---	11,283.09	0.180	0.180	8355
51,334,286	0.320	---	---	---	03/07/2000	18/12/2007	4548	SAOS (CR)	0.780	---	0.780	04/03/2015	---	---	---	---	---	---	---	---	---	40,040.74	0.780	0.780	2773
26,408,040	0.300	---	---	---	01/07/1997	26/05/1999	4464	SHEET STEEL SA (CR)	0.120	---	0.120	04/03/2015	---	---	---	---	---	---	---	---	---	3,168.96	0.120	0.120	1757
60,221,300	0.400	---	---	---	01/07/2002	01/11/2010	5022	SHELMAN SA (CR)	0.080	---	0.080	04/03/2015	---	---	---	---	---	---	---	---	---	4,817.70	0.080	0.080	2353
26,262,660	0.900	---	---	---	01/07/2008	24/02/2011	4954	SPRIDER STORES (CR)	0.031	---	0.031	04/03/2015	---	---	---	---	---	---	---	---	---	814.14	0.031	0.031	5371
144,688,060	0.600	---	---	---	21/04/2008	10/03/2010	4982	T BANK (CR)	0.048	---	0.048	04/03/2015	---	---	---	---	---	---	---	---	---	6,945.03	0.048	0.048	8355
6,523,780	0.530	---	---	---	01/07/2002	06/03/2001	4971	TECHNICAL PUBLICATIONS SA (CR)	0.006	---	0.006	04/03/2015	---	---	---	---	---	---	---	---	---	39.14	0.006	0.006	5557
13,920,000	0.320	---	---	---	19/11/2001	01/08/2000	4726	TEXAPRET SA (CR)	0.080	---	0.080	04/03/2015	---	---	---	---	---	---	---	---	---	1,113.60	0.080	0.080	3763
510,840	1.00	---	---	---	15/07/2008	21/11/2013	5036	TROPEA HOLDING (CR)	2.00	---	2.00	04/03/2015	---	---	---	---	---	---	---	---	---	1,021.68	2.00	2.00	3722
284,465,964	3.70	---	---	---	20/06/2008	15/06/2009	4913	TT HELLENIC POSTBANK (CR)	0.168	---	0.168	04/03/2015	---	---	---	---	---	---	---	---	---	47,790.28	0.168	0.168	8355
89,616,200	0.300	---	---	---	21/08/2000	28/06/2007	4616	UNITED TEXTILES (CR)	0.050	---	0.050	04/03/2015	---	---	---	---	---	---	---	---	---	4,480.81	0.050	0.050	3763
71,683,906	0.400	---	---	---	15/06/2005	05/02/2008	4953	XATZIOANNOU (CR)	0.026	---	0.026	04/03/2015	---	---	---	---	---	---	---	---	---	1,863.78	0.026	0.026	3763

Shares' Notes

Code	Note text
()	- Adjusted dividends.
*	- Last adjusted closing price.
[1]	- Net dividends.
[2]	- The "Date of Last Coupon" for New listings refers to the date company's stocks started to trade in Athex
[3]	- The Company Market Value is referred to the number of outstanding shares
[4]	- Sectors codification can be found in Appendix A
[5]	- The Market Value refers to the total number of shares listed (including their several classes) in the exchange by the company.
[6]	- P/E greater than 100
[7]	- Last view of the Order Book before the end of the trading session
[8]	- All Blocks Methods' Transactions Value are included.
4446	- Transfer to the "Under Supervision" Category as of 20/10/2008.
4447	- Transfer to the "Under Supervision" Category as of 21/10/2008.
4464	- Suspension of trading as of 1/12/2008.
4548	- Suspension of trading as of 1/4/2009.
4576	- Suspension of trading as of 14/7/2009.
4603	- Suspension of trading as of 1/12/2009.
4616	- Suspension of trading as of 25/2/2010.
4626	- Suspension of trading as of 1/4/2010.
4627	- Suspension of trading as of 1/4/2010.
4628	- Suspension of trading as of 1/4/2010.
4629	- Transfer to the Under Supervision Category as of 12/4/2010.
4651	- Suspension of trading as of 1/6/2010.
4652	- Suspension of trading as of 1/6/2010.
4690	- Transfer to Surveillance category as of 4/4/2006.
4702	- Suspension of trading as of 1/12/2010.
4723	- Suspension of trading as of 31/1/2011.
4726	- Suspension of trading as of 1/3/2011.
4750	- Transfer to the "Under Surveillance Category" from 8/4/2011.
4764	- Suspension of trading as of 20/5/2011.
4765	- Suspension of trading as of 20/5/2011.
4795	- The final gross (pre-tax) dividend is € 0.30 per share and subject to withholding tax on the full dividend amount, i.e. 0,45 per share, for those shareholders liable to withholding tax, in accordance with the applicable tax law provisions.
4814	- Transfer to the Low Dispersion Category as of 30/5/2011.
4815	- Transfer to the Low Dispersion Category as of 30/5/2011.
4816	- Transfer to the Low Dispersion Category as of 30/5/2011.
4817	- Transfer to the Low Dispersion Category as of 30/5/2011.
4820	- Transfer to the Low Dispersion category as of 18/4/2008.
4822	- Transfer to the Low Dispersion category as of 30/5/2011.
4823	- Transfer to the Low Dispersion category as of 4/4/2006.
4827	- Transfer to the Low Dispersion category as of 5/5/2010.
4830	- Suspension of trading as of 10/10/2011.
4833	- Transfer to Surveillance category from 6/5/2010.
4844	- Transfer to the Surveillance category from 8/4/2011.
4847	- Transfer to the Surveillance Category as of 3/7/2009.
4857	- The 793,906,274 new (CR) shares, resulting from the recent share capital increase through a rights issue, are not yet admitted to trading on the ATHEX.
4860	- Suspension of trading as of 30/3/2012.
4865	- Suspension of trading as of 2/4/2012.
4868	- Suspension of trading as of 2/4/2012.
4879	- Transfer to the Surveillance Category as of 10/4/2012.
4881	- Transfer to the Surveillance Category as of 10/4/2012.
4882	- Transfer to the Surveillance Category as of 10/4/2012.
4884	- Transfer to the Surveillance Category as of 10/4/2012.

Shares' Notes

Code	Note text
4885	- Transfer to the Surveillance Category as of 10/4/2012.
4886	- Transfer to the Surveillance Category as of 10/4/2012.
4887	- Transfer to the Surveillance Category as of 10/4/2012.
4888	- Transfer to the Surveillance Category as of 10/4/2012.
4911	- Lift of suspension from 30/7/2012.
4912	- Transfer to the Surveillance Category as of 31/7/2012.
4913	- Suspension of trading as of 30/8/2012.
4914	- Suspension of trading as of 31/8/2012.
4918	- Suspension of trading as of 31/8/2012.
4920	- Suspension of trading as of 31/8/2012.
4921	- Suspension of trading as of 31/8/2012.
4929	- Suspension of trading as of 1/10/2012.
4937	- Transfer to the UNDER DELETION category as of 30/11/2012.
4938	- Transfer to the UNDER DELETION category as of 30/11/2012.
4939	- Suspension of trading as of 30/11/2012.
4953	- Suspension of trading as of 2/4/2013.
4954	- Suspension of trading as of 2/4/2013.
4955	- Transfer to the Surveillance Category as from 5/4/2013.
4956	- Transfer to the Surveillance Category as from 5/4/2013.
4957	- Transfer to the Surveillance Category as from 5/4/2013.
4958	- Transfer to the Surveillance Category as from 5/4/2013.
4959	- Transfer to the Surveillance Category as from 5/4/2013.
4960	- Transfer to the Surveillance Category as from 5/4/2013.
4961	- Transfer to the Surveillance Category as from 5/4/2013.
4971	- Suspension of trading as of 3/6/2013.
4977	- Transfer to the "Under Surveillance Category" from 11/6/2013.
4978	- Transfer to the Under Supervision Category as of 11/6/2013.
4982	- Suspension of trading as of 1/12/2011.
4983	- Transfer to the Surveillance Category as of 5/4/2013.
4985	- Transfer to the "Under Surveillance Category" from 8/4/2011.
4993	- Suspension of trading as of 21/6/2013 (15:18).
4997	- Transfer to the Under Supervision Category as of 21/12/2009. - The 6,870,053 new (CB) shares, resulting from the recent share capital increase through a rights issue, are not yet admitted to trading on the ATHEX.
5002	- Suspension of trading as of 30/08/2013.
5003	- Suspension of trading as of 30/08/2013.
5004	- Suspension of trading as of 30/08/2013.
5007	- Transfer to the Surveillance category, as of 11/10/2013.
5008	- Transfer to the Surveillance Category from 8/4/2011.
5022	- Suspension of trading as of 2/12/2013.
5023	- Suspension of trading as of 2/12/2013.
5031	- The 612,300 new (CR) shares, resulting from the recent share capital increase through a rights issue, are not yet admitted to trading on the ATHEX.
5033	- Transfer to the Surveillance Category as of 25/11/2011. The 97,144,575 new (CR) shares, resulting from the recent share capital increase through a rights issue, are not yet admitted to trading on the ATHEX.
5036	- The company's share is under suspension of trading as of 2/4/2012. During suspension, the company proceeded and concluded a share reverse split, according to which - after the conclusion of the corporate action - the total number of the company's shares, as well as, the last closing price of 30/03/2012 were adjusted.
5046	- Transfer to the Low Dispersion category as of 8/4/2011.
5047	- Suspension of trading as of 27/3/2014.
5049	- Under suspension of trading as of 1/4/2014.
5053	- Transfer to the UNDER DELETION category as of 10/4/2014.
5054	- Transfer to the Surveillance Category as of 10/4/2014.
5055	- Transfer to the Surveillance Category as of 10/4/2014.
5056	- Transfer to the Under Supervision Category as of 14/4/2014.
5057	- Transfer to the Surveillance Category as of 29/12/2011.
5058	- Transfer to the Surveillance Category as of 29/12/2011.

Shares' Notes

Code	Note text
5059	- Transfer to the Low Dispersion category as of 2/6/2014.
5061	- Suspension of trading as of 2/6/2014.
5062	- Transfer to the UNDER DELETION category as of 4/6/2014.
5069	- Suspension of trading as of 1/10/2014.
5073	- The 90,000 new (CR) shares, resulting from the recent share capital increase through a rights issue, are not yet admitted to trading on the ATHEX.
5075	- Transfer to the "Low Dispersion" Category as of 31/10/2014.
5080	- Suspension of trading as of 6/9/2011.
5081	- Transfer to the Surveillance category, as of 19/12/2014.
5082	- Transfer to the Surveillance category, as of 26/02/2015.

Securities Blocks Details

Securities	Block Volume	Price	Block Trade Value	Time of approval	Note
GRIVALIA PROPERTIES (CR)	52,000	8.45	439,400.00	10:52:21	20
OPAP (CR)	66,719	8.70	580,455.30	13:35:35	20
EUROBANK ERGASIAS (CR)	90,000,000	0.124	11,115,000.00	15:44:00	20
PIRAEUS BANK (CR)	500,000	0.505	252,500.00	17:14:07	20

Blocks Notes

- 9 - Method 6-1 / Special Fees
- 10 - Method 6-1 / Special Fees, SDS
- 14 - Method 6-3 / Settlement, Incomplete Buy and Sell
- 18 - Method 6-2 / SPOT 1
- 19 - Method 6-2 / SPOT 2
- 20 - Method 6-1 and Method 6-1 Same Day Settlement
- 21 - Other Pre-agreed

Shares Rights Details

Occured date	Exercise from	Exercise until	Trading until	Rights	Price min	Price max	Closing price	Last Bid	Last Ask	Volume	Trades	Transactions Value
--------------	---------------	----------------	---------------	--------	-----------	-----------	---------------	----------	----------	--------	--------	--------------------

No Rights Transactions.

Shares Forced Sales

Securities	Transaction s Volume	Number of Trades	Transactions Value	Note
------------	-------------------------	---------------------	-----------------------	------

No Forced Transactions.

Forced Sales Notes

- 1 - Normal Forced Sale.
- 2 - Forced Sales of Fixed Registered Shares.
- 3 - Forced Sales of Remaining Stock Fractions.

Forced Sales Registered Shares

Securities	Start Date	End Date	Initial Volume	Remaining Volume	Date	Avg price (day)	Avg price (period)	Number of Trades	Transactions Volume	Transactions Value
------------	------------	----------	----------------	------------------	------	-----------------	--------------------	------------------	---------------------	--------------------

No Fixed Registered Shares Forced Sales.

Forced Sales Notes

According to Decision 1/380/04.05.2008 of the Hellenic Republic Capital Market Commission, the certificated registered shares that have not been deposited to the issuer for dematerialisation, will be auctioned in the Athens Exchange by the supervising issuer. Forced sales procedure is held according to Article 99A of the Athens Exchange Rulebook. The average price of the period is calculated by dividing the Total transactions value by the Total volume and includes all the transactions made until the current date.

Exchange Traded Funds (ETFs) Characteristics

	Transactions Date (T)	Creation / Redemption	Units (T-1)	New Units (T-1)	Redemption Units (T-1)	Units (T) [1]	Fund Assets [2]	Net Unit Price	Dividend per	Dividend Date
NBGAM ETF ΓΔ Χ.Α.	05/03/2015	25,000	294,878	---	---	294,878	2,789,809.00	9.4609	---	27/10/2011
ALPHA ETF FTSE Athex Large Cap	05/03/2015	50,000	5,848,618	---	---	5,848,618	14,747,000.00	2.5214	0.05	01/07/2013
NBGAM ETF GREECE & TURKEY 30	05/03/2015	25,000	388,550	---	---	388,550	2,872,641.00	7.3932	---	27/10/2011

ETFs Notes

[1] - Units (T) = Units (T-1) + New Units (T-1) - Redemption Units (T-1)

[2] - The Creation / Redemption Units of T-1 are included.

Corporate Bonds

Num Listed Bonds	Nominal price	Issue price	Today's Rate	Exp. Date	Duration (years)	Note	Coupon attached		Trading	Corporate Bonds	Price min	Price max	Closing price	Previous closing price/date	Volume	Transactions Value	Last order			ear min	Year max	
							Common	Preferred									Price	Buy / Sell	Date			
4,122,910	4.77	4.77	5.00	19/03/2015	5	---	20	---	1	MARFIN INVESTMENT GROUP S.A. (Conver to CR shar)	---	---	---	90.0000	18/02/2015	---	---	81.0000	B	28/11/2014	90.0000	90.0000
1,794,284	12.49	9.77	5.05	12/07/2015	8	---	---	---	1	NIREUS S.A. (Convertible to CR shares)	---	---	---	12.0000	29/01/2014	---	---	11.0000	B	17/11/2014	12.0000	12.0000
212,801,311	1.00	1.00	6.30	29/07/2020	7	---	7	---	1	MARFIN INVESTMENT GROUP S.A. SERIES B (BOND)	---	---	---	0.8500	23/08/2013	---	---	1.0000	B	28/11/2014	0.8500	0.8500
163,991,598	1.00	1.00	7.00	29/07/2019	6	---	7	---	1	MARFIN INVESTMENT GROUP S.A. SERIES A (BOND)	---	---	---	1.0000	23/08/2013	---	---	1.0000	B	28/11/2014	1.0000	1.0000

Corporate Bonds Notes

Transactions Volume = (Pieces) * (Nominal Price). Transactions Value = (Pieces) * (Nominal Price) * (price %) + (Accrued interest).

The price of a Bond is stated as a percentage (%) of Bond's Nominal Price.

Nominal Price in Euros (€), except if it is noted differently.

Government Bonds

Number Listed Bonds	Nominal price	Today's Rate	Accrued Interest Calc	Exp. Date [1]	Duration (years)	Note	Coupons Date	Curr. coupon value	Trading Unit	Government Bonds	Price min	Price max	Closing price	Previous closing price/date	Volume	Transactions Value	Price	Last order Buy / Sell	Date
1,792,455,803	1.00	4.30	Actual/Actual	24/02/2023	11	---	24/02	4.30	1	GGB-FXD-240223-11Y-2.000-1.00	---	---	---	10.0000 28/01/2015	---	---	---	---	---
1,771,485,249	1.00	4.30	Actual/Actual	24/02/2024	12	---	24/02	4.30	1	GGB-FXD-240224-12Y-2.000-1.00	---	---	---	10.0000 28/01/2015	---	---	---	---	---
1,744,316,583	1.00	4.30	Actual/Actual	24/02/2025	13	---	24/02	4.30	1	GGB-FXD-240225-13Y-2.000-1.00	---	---	---	10.0000 28/01/2015	---	---	---	---	---
1,498,761,836	1.00	4.30	Actual/Actual	24/02/2026	14	---	24/02	4.30	1	GGB-FXD-240226-14Y-2.000-1.00	---	---	---	10.0000 28/01/2015	---	---	---	---	---
1,469,952,920	1.00	4.30	Actual/Actual	24/02/2027	15	---	24/02	4.30	1	GGB-FXD-240227-15Y-2.000-1.00	---	---	---	10.0000 28/01/2015	---	---	---	---	---
1,525,434,082	1.00	4.30	Actual/Actual	24/02/2028	16	---	24/02	4.30	1	GGB-FXD-240228-16Y-2.000-1.00	---	---	---	10.0000 28/01/2015	---	---	---	---	---
1,503,860,546	1.00	4.30	Actual/Actual	24/02/2029	17	---	24/02	4.30	1	GGB-FXD-240229-17Y-2.000-1.00	---	---	---	10.0000 28/01/2015	---	---	---	---	---
1,435,418,132	1.00	4.30	Actual/Actual	24/02/2030	18	---	24/02	4.30	1	GGB-FXD-240230-18Y-2.000-1.00	---	---	---	10.0000 28/01/2015	---	---	---	---	---
1,368,045,727	1.00	4.30	Actual/Actual	24/02/2031	19	---	24/02	4.30	1	GGB-FXD-240231-19Y-2.000-1.00	---	---	---	10.0000 28/01/2015	---	---	---	---	---
1,373,758,194	1.00	4.30	Actual/Actual	24/02/2032	20	---	24/02	4.30	1	GGB-FXD-240232-20Y-2.000-1.00	---	---	---	10.0000 28/01/2015	---	---	---	---	---
1,452,639,893	1.00	4.30	Actual/Actual	24/02/2033	21	---	24/02	4.30	1	GGB-FXD-240233-21Y-2.000-1.00	---	---	---	10.0000 28/01/2015	---	---	---	---	---
1,410,344,954	1.00	4.30	Actual/Actual	24/02/2034	22	---	24/02	4.30	1	GGB-FXD-240234-22Y-2.000-1.00	---	---	---	10.0000 28/01/2015	---	---	---	---	---
1,444,202,190	1.00	4.30	Actual/Actual	24/02/2035	23	---	24/02	4.30	1	GGB-FXD-240235-23Y-2.000-1.00	---	---	---	10.0000 28/01/2015	---	---	---	---	---
1,505,138,031	1.00	4.30	Actual/Actual	24/02/2036	24	---	24/02	4.30	1	GGB-FXD-240236-24Y-2.000-1.00	---	---	---	10.0000 28/01/2015	---	---	---	---	---
1,396,254,095	1.00	4.30	Actual/Actual	24/02/2037	25	---	24/02	4.30	1	GGB-FXD-240237-25Y-2.000-1.00	---	---	---	10.0000 28/01/2015	---	---	---	---	---
1,382,167,704	1.00	4.30	Actual/Actual	24/02/2038	26	---	24/02	4.30	1	GGB-FXD-240238-26Y-2.000-1.00	---	---	---	10.0000 28/01/2015	---	---	---	---	---
1,337,331,257	1.00	4.30	Actual/Actual	24/02/2039	27	---	24/02	4.30	1	GGB-FXD-240239-27Y-2.000-1.00	---	---	---	10.0000 28/01/2015	---	---	---	---	---
1,371,908,706	1.00	4.30	Actual/Actual	24/02/2040	28	---	24/02	4.30	1	GGB-FXD-240240-28Y-2.000-1.00	---	---	---	10.0000 28/01/2015	---	---	---	---	---
1,360,659,778	1.00	4.30	Actual/Actual	24/02/2041	29	---	24/02	4.30	1	GGB-FXD-240241-29Y-2.000-1.00	---	---	---	10.0000 28/01/2015	---	---	---	---	---
1,432,747,403	1.00	4.30	Actual/Actual	24/02/2042	30	---	24/02	4.30	1	GGB-FXD-240242-30Y-2.000-1.00	---	---	---	10.0000 28/01/2015	---	---	---	---	---
742,153	1,000.00	0.93	FLR Actual/360	10/08/2019	5	---	10/02 - 10/08	---	1	GGB-FLT-100819-05Y-0.934-1.000	---	---	---	---	---	---	---	---	---
4,030,827	1,000.00	4.75	Actual/Actual	17/04/2019	5	---	17/04	4.75	1	GGB-FXD-170419-05Y-4.750-1.000	---	---	---	---	---	---	---	---	---
2,089,066	1,000.00	3.38	Actual/Actual	17/07/2017	3	---	17/07	3.38	1	GGB-FXD-170717-03Y-3.375-1.000	---	---	---	---	---	---	---	---	---

Government Bonds Notes

Transactions Volume = (Pieces) * (Nominal Price). Transactions Value = (Pieces) * (Nominal Price) * (price %) + (Accrued interest).

The Value of current coupon for the issues with NV 0.01 euro refers to NV 100 euros

FLR: Floating Interest Rate.

[1] - The Expiration Date of the interest bearing period and the Date for coupon payment.

Bonds in Circulation	Currency / Min nominal traded Value	Coupons Payment Date	Current Coupon Value	Note	Coupon Attached	Trading Unit	Issue Date	Duration (years)	Today's Interest	A.I.C in days	Bonds	Last price of previous days	Last Outcry in Cash (euro) Price	Buy / Sell	Date	Trades in Pieces	Life min	Life Max	
Bonds of International Organizations																			
1,000,000	EUR / 1000	21/07	---	---	9	1	21/07/2006	10	5.0 FLR	360	EUROPEAN INVESTMENT BANK BOND	97.50	16/04/2007	---	---	---	---	---	
Corporate Bonds in Foreign Currency and Euro																			
103,746	GBP / 10	01/12	0.25	---	56	1	01/12/1930	98	2.5	360	National Mortgage Bank	2.27	05/02/1996	2.27	S	05/02/1996	---	2.27	2.27
0	GBP / 10	01/12	0.25	---	58	1	01/12/1928	100	2.5	360	National Mortgage Bank	---	---	---	---	---	---	---	---

Government Bonds Notes

A.I.C: Accrued Interest Calculation base.

FLR: Floating Interest Rate.

The minimum tradeable Nominal Value for all Demeterialised Government Titles is 100 Euros.

State Banks Bonds (one year maturity)

Number Listed Bonds	Nominal value	Initial Rate	Current Rate	Annual Interest	Issue Date	Note	State Banks Bonds	Trading Unit	Yearly Renewals	Last Outcry in Cash (euro)		Volume
										Price	Buy / Sell	
2,446	1,182.96	4.90	2.47	29.69	31/05/2008	---	H.I.D.B.	1	7	---	---	---

Bonds Notes

The annual renewal of H.I.D.B. Bonds is free of taxes (net rate).
For Bonds issue until 27/02/2015 the accrued interest is capitalized.

Athex & ATHEXCclear Members List

Member Name	Stock Market			Derivatives Market		ATHEXCclear Member					
	Address	Phone	Fax	Market Member	Remote Member	Market Maker	Proprietary	Market Maker	General Clearing	Direct Clearing	Non Clearing
A. SARRIS SECURITIES S.A.				a							
6, DRAGATSANIOU STR. ATHINA	(210)-3367700	(210)-3312324									
ALPHA FINANCE INVESTMENT SERVICES S.A.				a		a		a		a	
5, MERLIN STR. ATHINA	(210)-3677400	(210)-3311193									
ALPHA BANK A.E.									a		
40, STADIOU STR ATHINA	(210)-3265546 (210)-3260000	(210)-3265811 (210)-3264116									
ARGUS STOCKBROKERS LTD				a	a		a				
12-14, KENNEDY AVE, S. 303 NICOSIA	(+35722)-22717000	(+35722)-22717070									
ATLANTIC SECURITIES LIMITED				a	a						
37, PRODROMOU STR. NICOSIA	(+35722)-445400	(+35722)-661914									
ATLAS SECURITIES S.A.				a			a				a
14 - 16, VERNON STR.& 125 MICHALAKOPOULOU STR. ATHINA	(210)-3363300	(210)-3238925									
ATTICA BANK S.A.									a		
23, OMIROU STR. ATHINA	(210)-3669000	(210)-3669410									
54, AKADIMIAS STR. ATHINA	(210)-3390757	(210)-3646090									
AXIA VENTURES GROUP LTD				a	a						
10, G. KRANIDIOTI NICOSIA	+357 22 742000	+357 22 742001									
AXON SECURITIES S.A.				a			a				a
48, STADIOU ATHINA	(210)-3363800	(210)-3243903									
BANK OF CYPRUS PUBLIC COMPANY LTD									a		
, 51,STASINOU (AG. PARASKEVI, STROVOLOS) NICOSIA	(0035722)-121883	(0035722)-336258									
170, ALEXANDRAS AVE ATHINA	(210)-6477708	(210)-6477709									
BETA SECURITIES S.A.				a		a		a		a	
, BRAILA & 29 ALEXANDRAS AVE ATHINA	(210)-6478900	(210)-6410139									
BNP PARIBAS SECURITIES SERVICES									a		
94, VAS. SOFIAS AVE ATHINA	(210)-7468500	(210)-7468579									
CAPITAL SECURITIES S.A.				a			a				a
58, MITROPOLEOS STR. ATHINA	(210)-3369700	(210)-3369820									
CFS SECURITIES & INVESTMENT SERVICES S.A.				a			a			a	
3, STADIOU STR. ATHINA	(210)-3360800	(210)-3311854									
CITIBANK INTERNATIONAL PLC (ATHENS BRANCH)									a		
8, OTONOS ATHINA	(210)-9293084	(210)-9293461									
CITIGROUP GLOBAL MARKET LTD				a	a						
, CITIGROUP CENTRE, CANADA SQUARE, CANARY WHART LONDON	002079864000	002079862266									
CREDIT SUISSE SECURITIES (EUROPE) LIMITED				a	a						
, ONE CABOT SQUARE LONDON	+44 20 7888 8888	+44 20 7888 1600									
CYCLOS SECURITIES S.A.				a			a			a	
39, PANEPISTIMIOU STR. ATHINA	(210)-3364300	(210)-3239122									
D.A. TSEKOURAS SEC. S.A.				a							
, PESMAZOGLOY 3	(210)-3214406	(210)-3211997									
DEUTSCHE BANK A.G.				a	a		a				
70, THEODOR-HEUSS-ALLEE FRANKFURT	0049 69 910 00	0049 69 910 34 225									
DYNAMIC SECURITIES				a			a			a	
6 - 10, CHAR. TRIKOUPH STR. ATHINA	(210)-3677700	(210)-3677777									
EL. PETROPOULAKIS SECURITIES S.A.				a			a				a
9, ARISTIDOU STR. ATHINA	(210)-3213928	(210)-3216810									
EUROBANK EQUITIES S.A.				a		a		a		a	
10, FILELLINON STR. ATHINA	(210)-3720000	(210)-3720001									
EUROBANK ERGASIAS S.A.									a		
8, OTHONOS STR. ATHINA	(210)-3337000 (210)-3337969	(210)-3233866 (210)-3245916									
EUROCORP SECURITIES S.A.				a			a			a	
14, FILIKIS ETAIRIAS SQ. ATHINA	(210)-7263500	(210)-7263666									
EUOTRUST BROKERAGE S.A.				a							
13-15, SOPHOCLEOUS STR. ATHINA	(210)-3363100	(210)-3238334									
EUROXX SECURITIES S.A.				a			a			a	
7, PALAIOLOGOU STR. CHALANDRI	(210)-6879400	(210)-6879401									
G.A. PERVANAS SECURITIES & INVESTMENT SERVICES CO S.A.				a							a
7 - 9, SOPHOCLEOUS STR. ATHINA	(210)-3251875	(210)-3210291									
GLOBAL CAPITAL SECURITIES AND FINANCIAL SERVICES LTD				a	a						
5, LEMESOU AVE. LEMESOS CYPRUS	(+35722)-710710	(+35722)-339332									

Athex & ATHEXCclear Members List

Member Name	Stock Market			Derivatives Market		ATHEXCclear Member					
	Address	Phone	Fax	Market Member	Remote Member	Market Maker	Proprietary	Market Maker	General Clearing	Direct Clearing	Non Clearing
GUARDIAN TRUST SECURITIES S.A				a			a				a
15, FILELLINON STR. ATHINA	(210)-3220402	(210)-3220498									
HELLENIC AMERICAN SEC. S.A.				a		a	a			a	
6, EVRIPIDOU STR. ATHINA	(210)-3311100	(210)-3215968									
HELLENIC BANK (INVESTMENTS) LTD				a	a						
31, KYRIAKOY MATSI AVE. NICOSIA	(+35722)-500100	(+35722)-500110									
HSBC BANK PLC									a		
109-111, MESOGION AVE ATHINA	(210)-6961507	(210)-6929310									
INDEX SECURITIES S.A.				a							
6, DRAGATSANIOU STR. ATHINA	(210)-3213920	(210)-3213216									
INVESTMENT BANK OF GREECE S.A.				a		a		a	a		
32, AIGEIALIAS MAROUSI	(210) 8173000	(210) 8173101									
24B, KIFISSIAS AVE MAROUSI	(210)-8171800	(210)-8171889									
J. CHR. MAVRIKIS SECURITIES S.A.				a							
5, SOPHOCLEOUS STR. ATHINA	(210)-3213949	(210)-3217767									
KAPPA SECURITIES S.A.				a			a				a
15, VALAORITOU STR. ATHINA	(210)-3610371	(210)-3641002									
KYPROU SECURITIES S.A.											a
26, HALKIDONOS & FIDIPIDOY STR. ATHINA	(210)-8701000	(210)-8701049									
LAIKI FINANCIAL SERVICES LTD				a	a						
26, CLR HOUSE, VIRONOS AVE. NICOSIA	(+35722)-898600	(+35722)-680953									
LEON DEPOLAS SECURITIES S.A.				a			a				a
1, CHR. LADA STR. ATHINA	(210)-3213286	(210)-3211618									
MAGNA TRUST SECURITIES S.A				a							a
9, FIDIOU STR. ATHINA	(210)-3327503	(210)-3327599									
MEGA EQUITY SECURITIES & FINANCIAL SERVICES LTD				a	a		a				
42-44, GRIBA DIGENI AV. NICOSIA	(+35722)-711711	(+35722)-711811									
MERIT SECURITIES S.A				a		a	a			a	
38, VAS. KONSTANTINOY STR. ATHINA	(210)-3671800	(210)-3671830									
MERRILL LYNCH				a	a						
2, KING EDWARD STREET LONDON	(+4420)-79952000	(+4420)-79954525									
MIDAS BROKERAGE S.A.				a							
5, SOPHOCLEOUS STR. ATHINA	(210)-3253203	(210)-3253205									
N. CHRYSOCHOIDIS STOCK BROKERAGE I.S.S.A.				a			a			a	
7 - 9, SOPHOCLEOUS STR. ATHINA	(210)-3213913	(210)-3216115									
NATIONAL BANK OF GREECE S.A.				a			a		a		
86, AILOU STR. ATHINA	(210)-3341000	(210)-3228187									
68, AKADIMIAS STR. ATHINA	(210)-3328817	(210)-3328678									
NBG SECURITIES S.A.				a		a		a			a
68, AKADIMIAS STR. ATHINA	(210)-3328500	(210)-3328565									
NUNTIUS SECURITIES S.A				a							a
6, DRAGATSANIOU STR. ATHINA	(210)-3350599	(210)-3254846									
PANTELAKIS SEC. S.A.				a			a				a
109-111, MESOGION AVE. ATHINA	(210)-6965000	(210)-6929550									
PEGASUS BROKERAGE FIRM S.A				a			a				
17, VALAORITOU STR. ATHINA	(210)-3670700	(210)-3670760									
PIRAEUS BANK S.A.				a		a			a		
4, AMERIKIS STR. ATHINA	(210)-3335000	(210)-3335079									
4, AMERIKIS STR ATHINA	(210)-3335918	(210)-3254207									
PIRAEUS SECURITIES S.A.				a				a		a	
10, STADIOU STR. ATHINA	(210)-3354100	(210)-3233814									
PRELIUM SECURITIES & INVESTMENT SERVICES S.A.				a			a				a
, KIFISSIAS AVE & 1 DAVAKI STR ATHINA	(210)-3677000	(210)-6920403									
PROCHOICE SECURITIES LTD				a	a						
57, SPYROY KYPRIANOU NICOSIA	+357-24-661192	+357-24-662464									
SHARELINK SECURITIES & FINANCIAL SERVICES LTD				a	a		a				
6, ELLINAS HOUSE, THEOTOKI STR. NICOSIA	(+35722)-554200	(+35722)-750852									
SOCIETE GENERALE S.A.				a	a		a				
17, COURS VALMY PUTEAUX - LA DEFENSE PARIS	(+33) 142134754	(+33) 142135697									
240-242, KIFISSIAS AVE ATHINA	(210)-6790161	(210)-6728828									
SOLIDUS SECURITIES S.A				a			a			a	
64, LOUIZIS RIANKOUR STR. ATHINA	(210)-6925500	(210)-6985421									

Athex & ATHEXClear Members List

Member Name			Stock Market			Derivatives Market		ATHEXClear Member		
Address	Phone	Fax	Market Member	Remote Member	Market Maker	Proprietary	Market Maker	General Clearing	Direct Clearing	Non Clearing
ST. EM. LAVRENTAKIS SECURITIES S.A.			a			a				a
7 - 9, SOPHOCLEOUS STR. ATHINA	(210)-3213336	(210)-3246572								
THE CYPRUS INVESTMENT AND SECURITIES CORPORATION LIMITED (CISCO)			a	a						
4, EVROU STR. (EUROLIFE HOUSE) NICOSIA	(+35722)-881800	(+35722)-881801								
UBS LIMITED			a	a						
1, FINSBURY AVENUE LONDON	(+4420)-79013333	(+4420)-79012345								
KARAMANOF SECURITIES & INV. SERVICES S.A.			a			a				
2, SQ. ST THEODORON ATHINA	(210)-3212947	(210)-3217088								

List of Stocks under Market Making operations

Securities	Market Maker	Start Market Making	Stock Category
CYPRUS POPULAR BANK (CR)			Suspension Status
	PIRAEUS SECURITIES S.A.	02/02/2013	
VIOHALCO (CB)			Suspension Status
	ALPHA FINANCE INVESTMENT SERVICES S.A.	11/02/2013	
	EUROBANK EQUITIES S.A.	20/01/2013	
	MERIT SECURITIES S.A.	13/12/2012	
ALPHA BANK (CR)			Main Market
	EUROBANK EQUITIES S.A.	24/10/2012	
	HELLENIC AMERICAN SEC. S.A.	25/07/2014	
	INVESTMENT BANK OF GREECE S.A.	08/01/2013	
	MERIT SECURITIES S.A.	03/09/2013	
	NBG SECURITIES S.A.	15/01/2013	
	PIRAEUS SECURITIES S.A.	28/05/2013	
ALUMIL (CR)			Main Market
	BETA SECURITIES S.A.	18/07/2013	
ATTICA BANK S.A. (CR)			Main Market
	BETA SECURITIES S.A.	02/06/2014	
	EUROBANK EQUITIES S.A.	25/07/2014	
	HELLENIC AMERICAN SEC. S.A.	25/07/2014	
BYTE COMPUTER SA (CR)			Main Market
	MERIT SECURITIES S.A.	04/08/2013	
CC HBC AG (CR)			Main Market
	EUROBANK EQUITIES S.A.	23/10/2013	
	NBG SECURITIES S.A.	29/04/2013	
ELLAKTOR (CR)			Main Market
	EUROBANK EQUITIES S.A.	01/06/2013	
	INVESTMENT BANK OF GREECE S.A.	02/01/2013	
	NBG SECURITIES S.A.	25/06/2013	
ELTECH ANEMOS S.A. (CR)			Main Market
	EUROBANK EQUITIES S.A.	22/07/2014	
ELTON SA (CR)			Main Market
	BETA SECURITIES S.A.	03/09/2013	
EUROBANK ERGASIAS (CR)			Main Market
	ALPHA FINANCE INVESTMENT SERVICES S.A.	08/01/2013	
	EUROBANK EQUITIES S.A.	01/06/2013	
	HELLENIC AMERICAN SEC. S.A.	25/07/2014	
	INVESTMENT BANK OF GREECE S.A.	08/01/2013	
	PIRAEUS SECURITIES S.A.	28/09/2013	
EUROCONSULTANTS S.A. (CR)			Main Market
	EUROBANK EQUITIES S.A.	22/07/2014	
FOLLI FOLLIE (CR)			Main Market
	NBG SECURITIES S.A.	17/02/2014	
FRIGOGLASS SA (CR)			Main Market
	EUROBANK EQUITIES S.A.	27/10/2014	
GEK TERNA (CR)			Main Market
	INVESTMENT BANK OF GREECE S.A.	02/01/2013	
GR. SARANTIS SA (CR)			Main Market
	BETA SECURITIES S.A.	14/05/2013	
HELLENIC EXCHANGES-A.S.E. (CR)			Main Market
	EUROBANK EQUITIES S.A.	01/06/2013	
	HELLENIC AMERICAN SEC. S.A.	01/09/2014	
	INVESTMENT BANK OF GREECE S.A.	02/01/2013	
	NBG SECURITIES S.A.	25/06/2013	
INTRALOT (CR)			Main Market
	EUROBANK EQUITIES S.A.	01/06/2013	
	INVESTMENT BANK OF GREECE S.A.	02/01/2013	
	PIRAEUS SECURITIES S.A.	28/09/2013	
KRETA FARM SA (CR)			Main Market
	EUROBANK EQUITIES S.A.	17/11/2014	
LAMDA DEVELOPMENT SA (CR)			Main Market
	EUROBANK EQUITIES S.A.	08/12/2014	
MARFIN INVESTMENT GROUP (CR)			Main Market
	HELLENIC AMERICAN SEC. S.A.	25/07/2014	
	PIRAEUS SECURITIES S.A.	02/02/2013	
MLS MULTIMEDIA SA (CR)			Main Market
	BETA SECURITIES S.A.	18/07/2013	

List of Stocks under Market Making operations

Securities	Market Maker	Start Market Making	Stock Category
MOTOR OIL (CR)			Main Market
	EUROBANK EQUITIES S.A.	23/10/2012	
	HELLENIC AMERICAN SEC. S.A.	01/09/2014	
	NBG SECURITIES S.A.	17/02/2014	
MYTILINEOS HOLDINGS (CR)			Main Market
	HELLENIC AMERICAN SEC. S.A.	25/07/2014	
	INVESTMENT BANK OF GREECE S.A.	02/01/2013	
	NBG SECURITIES S.A.	25/06/2013	
NATIONAL BANK (CR)			Main Market
	ALPHA FINANCE INVESTMENT SERVICES S.A.	08/01/2013	
	EUROBANK EQUITIES S.A.	24/10/2012	
	HELLENIC AMERICAN SEC. S.A.	25/07/2014	
	INVESTMENT BANK OF GREECE S.A.	08/01/2013	
	MERIT SECURITIES S.A.	03/09/2013	
	NBG SECURITIES S.A.	28/02/2013	
	PIRAEUS SECURITIES S.A.	08/09/2013	
OPAP (CR)			Main Market
	ALPHA FINANCE INVESTMENT SERVICES S.A.	08/01/2013	
	EUROBANK EQUITIES S.A.	24/10/2012	
	HELLENIC AMERICAN SEC. S.A.	25/07/2014	
	INVESTMENT BANK OF GREECE S.A.	08/01/2013	
	NBG SECURITIES S.A.	15/01/2013	
OTE (CR)			Main Market
	ALPHA FINANCE INVESTMENT SERVICES S.A.	08/01/2013	
	EUROBANK EQUITIES S.A.	24/10/2012	
	HELLENIC AMERICAN SEC. S.A.	25/07/2014	
	INVESTMENT BANK OF GREECE S.A.	08/01/2013	
	NBG SECURITIES S.A.	01/12/2012	
	PIRAEUS SECURITIES S.A.	08/09/2013	
PAPOUTSANIS (CR)			Main Market
	BETA SECURITIES S.A.	25/11/2013	
PETROPOULOS PETROS (CR)			Main Market
	BETA SECURITIES S.A.	28/05/2013	
PIRAEUS BANK (CR)			Main Market
	EUROBANK EQUITIES S.A.	23/10/2012	
	HELLENIC AMERICAN SEC. S.A.	25/07/2014	
	INVESTMENT BANK OF GREECE S.A.	08/01/2013	
	MERIT SECURITIES S.A.	16/09/2013	
	NBG SECURITIES S.A.	02/06/2013	
	PIRAEUS SECURITIES S.A.	16/02/2013	
PLAISIO COMPUTERS SA (CR)			Main Market
	BETA SECURITIES S.A.	05/05/2014	
	EUROBANK EQUITIES S.A.	02/03/2015	
PPC (CR)			Main Market
	ALPHA FINANCE INVESTMENT SERVICES S.A.	08/01/2013	
	EUROBANK EQUITIES S.A.	23/10/2012	
	HELLENIC AMERICAN SEC. S.A.	01/09/2014	
	INVESTMENT BANK OF GREECE S.A.	08/01/2013	
	NBG SECURITIES S.A.	26/03/2013	
	PIRAEUS SECURITIES S.A.	28/09/2013	
PROFILE SA (CR)			Main Market
	EUROBANK EQUITIES S.A.	23/06/2014	
REDS S.A. (CR)			Main Market
	EUROBANK EQUITIES S.A.	05/09/2014	
S.KANAKIS SA (CR)			Main Market
	BETA SECURITIES S.A.	01/10/2013	
TITAN CEMENT (CR)			Main Market
	EUROBANK EQUITIES S.A.	23/10/2012	
	NBG SECURITIES S.A.	17/02/2014	
VIOHALCO SA/NV (CB)			Main Market
	ALPHA FINANCE INVESTMENT SERVICES S.A.	17/02/2014	
	MERIT SECURITIES S.A.	17/03/2014	

Underlying Asset				Derivatives Market														
Price max	Price min	Closing price	change	Delivery Month	Open price	Price max	Price min	Last price	Closing price	Last Bid	Last Ask	Settlement price	Life high	Life low	Trades	Volume	Open Interest	
FTSE/Athex Large Cap																		
254.51	246.69	254.02	1.88%	March 2015	247.50	255.75	246.00	255.50	255.50	---	---	254.50	328.00	---	812	6,158	38,588	
				April 2015	248.75	253.50	247.00	249.25	249.25	---	---	253.50	---	280.00	---	12	197	254
				May 2015	---	---	---	---	250.00	---	---	---	---	---	---	---	---	
				June 2015	---	---	---	---	249.75	---	---	248.00	---	273.00	---	---	4	
				September 2015	---	---	---	---	249.75	---	---	---	---	---	---	---	---	
				December 2015	---	---	---	---	250.75	---	---	---	---	---	---	---	---	

(Trade Unit: 1 Index Point x 5€, Cash Settlement)

Underlying Asset				Derivatives Market													
Price max	Price min	Closing price	change	Delivery Month	Open price	Price max	Price min	Last price	Closing price	Last Bid	Last Ask	Settlement price	Life high	Life low	Trades	Volume	Open Interest
ALPHA BANK (CR) (Contract Size: 100 Securities, Physical Delivery)																	
0.355	0.332	0.354	4.12%	March 2015	0.340	0.359	0.330	0.359	0.359	---	---	0.352	0.555	---	145	3,288	45,009
				June 2015	0.338	0.351	0.338	0.351	0.351	---	---	0.352	0.405	---	2	51	1,178
				September 2015	---	---	---	---	0.344	---	---	0.355	0.403	---	---	---	50
				December 2015	---	---	---	---	0.345	---	---	---	---	---	---	---	---
CC HBC AG (CR) (Contract Size: 100 Securities, Physical Delivery)																	
16.31	16.07	16.23	0.37%	March 2015	16.16	16.17	16.16	16.17	16.17	---	---	15.99	17.10	---	3	13	191
				June 2015	---	---	---	---	16.27	---	---	---	---	---	---	---	---
				September 2015	---	---	---	---	16.00	---	---	---	---	---	---	---	---
				December 2015	---	---	---	---	16.08	---	---	---	---	---	---	---	---
CORINTH PIPEWORKS SA (CR) (Contract Size: 100 Securities, Physical Delivery)																	
1.07	1.01	1.05	0.00%	March 2015	1.07	1.07	1.03	1.03	1.03	---	---	1.04	1.30	---	13	49	438
				June 2015	---	---	---	---	1.06	---	---	1.26	0.999	---	---	---	75
				September 2015	---	---	---	---	1.06	---	---	---	---	---	---	---	---
				December 2015	---	---	---	---	1.07	---	---	---	---	---	---	---	---
ELLAKTOR (CR) (Contract Size: 100 Securities, Physical Delivery)																	
2.50	2.43	2.50	0.00%	March 2015	2.46	2.51	2.43	2.50	2.50	---	---	2.46	2.75	---	14	76	1,476
				June 2015	---	---	---	---	2.51	---	---	---	---	---	---	---	---
				September 2015	---	---	---	---	2.53	---	---	---	---	---	---	---	---
				December 2015	---	---	---	---	2.54	---	---	---	---	---	---	---	---
EUROBANK ERGASIAS (CR) (Contract Size: 100 Securities, Physical Delivery)																	
0.129	0.115	0.129	7.50%	March 2015	0.118	0.130	0.115	0.130	0.130	---	---	0.128	0.267	---	277	9,342	135,082
				June 2015	0.122	0.128	0.121	0.122	0.122	---	---	0.129	0.277	---	10	187	4,390
				September 2015	0.120	0.132	0.120	0.132	0.132	---	---	0.130	0.176	---	3	900	1,500
				December 2015	---	---	---	---	0.122	---	---	---	---	---	---	---	---
EYDAP S.A. (CR) (Contract Size: 100 Securities, Physical Delivery)																	
6.67	6.13	6.25	-5.73%	March 2015	6.63	6.63	6.17	6.17	6.17	---	---	6.25	7.44	---	15	34	154
				June 2015	---	---	---	---	6.29	---	---	---	---	---	---	---	---
				September 2015	---	---	---	---	6.27	---	---	---	---	---	---	---	---
				December 2015	---	---	---	---	6.31	---	---	---	---	---	---	---	---
FOLLI FOLLIE (CR) (Contract Size: 100 Securities, Physical Delivery)																	
28.00	27.20	28.00	0.72%	March 2015	27.64	28.00	27.17	28.00	28.00	---	---	27.53	31.00	---	14	35	176
				June 2015	---	---	---	---	27.97	---	---	26.47	23.52	---	---	---	2
				September 2015	---	---	---	---	28.11	---	---	---	---	---	---	---	---
				December 2015	---	---	---	---	28.25	---	---	---	---	---	---	---	---
FRIGOGLASS SA (CR) (Contract Size: 100 Securities, Physical Delivery)																	
1.75	1.70	1.72	-1.71%	March 2015	1.78	1.78	1.71	1.71	1.71	---	---	1.70	2.02	---	3	6	347
				June 2015	---	---	---	---	1.76	---	---	---	---	---	---	---	---
				September 2015	---	---	---	---	1.77	---	---	---	---	---	---	---	---
				December 2015	---	---	---	---	1.78	---	---	---	---	---	---	---	---

Underlying Asset				Derivatives Market														
Price max	Price min	Closing price	change	Delivery Month	Open price	Price max	Price min	Last price	Closing price	Last Bid	Last Ask	Settlement price	Life high	Life low	Trades	Volume	Open Interest	
GEK TERNA (CR) (Contract Size: 100 Securities, Physical Delivery)																		
2.36	2.25	2.36	2.16%	March 2015	2.30	2.35	2.24	2.33	2.33	---	---	2.38	2.80	---	10	52	7,648	
				June 2015	---	---	---	---	2.32	---	---	2.38	---	2.73	---	---	---	
				September 2015	---	---	---	---	2.34	---	---	---	---	---	---	---	---	
				December 2015	---	---	---	---	2.35	---	---	---	---	---	---	---	---	
GRIVALIA PROPERTIES (CR) (Contract Size: 100 Securities, Physical Delivery)																		
8.59	8.11	8.25	-3.96%	March 2015	8.39	8.43	8.18	8.30	8.30	---	---	8.27	8.89	---	10	17	179	
				June 2015	---	---	---	---	8.46	---	---	---	---	---	---	---	---	
				September 2015	---	---	---	---	8.50	---	---	---	---	---	---	---	---	
				December 2015	---	---	---	---	8.55	---	---	---	---	---	---	---	---	
HELLENIC EXCHANGES-A.S.E. (CR) (Contract Size: 100 Securities, Physical Delivery)																		
6.18	5.95	6.17	0.33%	March 2015	6.02	6.15	5.98	6.13	6.13	---	---	6.13	6.80	---	32	68	1,274	
				June 2015	---	---	---	---	6.10	---	---	6.02	---	---	---	---	---	
				September 2015	---	---	---	---	6.13	---	---	---	---	---	---	---	---	
				December 2015	---	---	---	---	6.16	---	---	---	---	---	---	---	---	
HELLENIC PETROLEUM (CR) (Contract Size: 100 Securities, Physical Delivery)																		
4.41	4.23	4.29	-1.83%	March 2015	4.37	4.38	4.24	4.29	4.29	---	---	4.22	4.75	---	21	50	4,390	
				June 2015	---	---	---	---	4.40	---	---	---	---	---	---	---	---	
				September 2015	---	---	---	---	4.27	---	---	---	---	---	---	---	---	
				December 2015	---	---	---	---	4.29	---	---	---	---	---	---	---	---	
INTRALOT (CR) (Contract Size: 100 Securities, Physical Delivery)																		
1.75	1.62	1.75	0.58%	March 2015	1.70	1.72	1.65	1.72	1.72	---	---	1.77	1.79	---	23	81	400	
				June 2015	1.70	1.70	1.70	1.70	1.70	---	---	1.75	---	1.74	---	2	10	11
				September 2015	---	---	---	---	1.76	---	---	---	---	---	---	---	---	
				December 2015	---	---	---	---	1.77	---	---	---	---	---	---	---	---	
JUMBO SA (CR) (Contract Size: 100 Securities, Physical Delivery)																		
9.73	9.33	9.50	0.96%	March 2015	9.56	9.70	9.36	9.43	9.43	---	---	9.63	10.93	---	65	198	645	
				June 2015	9.41	9.46	9.37	9.46	9.46	---	---	9.64	---	9.46	---	5	21	20
				September 2015	---	---	---	---	9.51	---	---	---	---	---	---	---	---	
				December 2015	---	---	---	---	9.38	---	---	---	---	---	---	---	---	
MARFIN INVESTMENT GROUP (CR) (Contract Size: 100 Securities, Physical Delivery)																		
0.183	0.174	0.180	2.27%	March 2015	0.175	0.183	0.175	0.183	0.183	---	---	0.182	0.250	---	18	223	27,074	
				June 2015	---	---	---	---	0.177	---	---	0.187	---	0.232	---	---	16	
				September 2015	---	---	---	---	0.178	---	---	---	---	---	---	---	---	
				December 2015	---	---	---	---	0.179	---	---	---	---	---	---	---	---	
METKA (CR) (Contract Size: 100 Securities, Physical Delivery)																		
9.12	8.74	9.09	3.29%	March 2015	8.82	9.07	8.74	9.07	9.07	---	---	9.14	10.42	---	23	54	629	
				June 2015	---	---	---	---	8.85	---	---	---	---	---	---	---	---	
				September 2015	---	---	---	---	8.60	---	---	---	---	---	---	---	---	
				December 2015	---	---	---	---	8.64	---	---	---	---	---	---	---	---	

Underlying Asset				Derivatives Market													
Price max	Price min	Closing price	change	Delivery Month	Open price	Price max	Price min	Last price	Closing price	Last Bid	Last Ask	Settlement price	Life high	Life low	Trades	Volume	Open Interest
(Contract Size: 100 Securities, Physical Delivery)																	
MOTOR OIL (CR)				March 2015	7.20	7.55	7.18	7.48	7.48	---	---	7.44	7.96	---	25	85	431
7.52	7.16	7.52	3.72%	June 2015	---	---	---	---	7.29	---	---	7.44	---	---	---	---	---
				September 2015	---	---	---	---	7.13	---	---	---	---	---	---	---	---
				December 2015	---	---	---	---	7.17	---	---	---	---	---	---	---	---
(Contract Size: 100 Securities, Physical Delivery)																	
MYTILINEOS HOLDINGS (CR)				March 2015	6.17	6.27	6.09	6.25	6.25	---	---	6.23	6.95	---	40	131	3,231
6.25	6.04	6.25	0.81%	June 2015	6.17	6.17	6.15	6.15	6.15	---	---	6.28	6.43	---	2	6	6
				September 2015	---	---	---	---	6.27	---	---	6.45	5.52	---	---	---	---
				December 2015	---	---	---	---	6.30	---	---	---	---	---	---	---	---
(Contract Size: 100 Securities, Physical Delivery)																	
NATIONAL BANK (CR)				March 2015	1.23	1.36	1.22	1.35	1.35	---	---	1.34	1.90	---	468	8,365	30,173
1.35	1.23	1.34	7.20%	June 2015	1.31	1.35	1.26	1.35	1.35	---	---	1.35	2.10	---	5	5	90
				September 2015	---	---	---	---	1.26	---	---	1.34	1.44	---	---	---	---
				December 2015	---	---	---	---	1.27	---	---	---	---	---	---	---	---
(Contract Size: 100 Securities, Physical Delivery)																	
OPAP (CR)				March 2015	8.75	9.00	8.67	8.98	8.98	---	---	8.85	10.50	---	104	275	1,709
9.00	8.69	8.92	2.53%	June 2015	8.87	8.87	8.87	8.87	8.87	---	---	8.75	9.21	---	1	20	20
				September 2015	8.87	8.87	8.87	8.87	8.87	---	---	8.75	9.38	---	1	20	32
				December 2015	---	---	---	---	8.59	---	---	---	---	---	---	---	---
(Contract Size: 100 Securities, Physical Delivery)																	
OTE (CR)				March 2015	9.11	9.15	8.92	9.14	9.14	---	---	9.09	10.09	---	112	547	7,019
9.14	8.90	9.14	0.88%	June 2015	8.88	8.88	8.88	8.88	8.88	---	---	8.96	10.57	---	1	30	10
				September 2015	8.88	8.88	8.88	8.88	8.88	---	---	8.96	9.46	---	1	30	---
				December 2015	---	---	---	---	9.21	---	---	---	---	---	---	---	---
(Contract Size: 100 Securities, Physical Delivery)																	
P.P.A. S.A. (CR)				March 2015	14.21	14.24	14.09	14.22	14.22	---	---	14.16	16.30	---	7	11	169
14.50	14.08	14.15	-2.01%	June 2015	---	---	---	---	14.53	---	---	---	---	---	---	---	---
				September 2015	---	---	---	---	14.48	---	---	---	---	---	---	---	---
				December 2015	---	---	---	---	14.55	---	---	---	---	---	---	---	---
(Contract Size: 100 Securities, Physical Delivery)																	
PIRAEUS BANK (CR)				March 2015	0.456	0.512	0.454	0.507	0.507	---	---	0.503	1.34	---	379	7,120	88,551
0.506	0.460	0.505	6.32%	June 2015	0.478	0.498	0.478	0.498	0.498	---	---	0.502	1.00	---	4	201	1,084
				September 2015	0.491	0.508	0.491	0.508	0.508	---	---	0.508	0.733	---	3	300	400
				December 2015	---	---	---	---	0.483	---	---	---	---	---	---	---	---
(Contract Size: 100 Securities, Physical Delivery)																	
PPC (CR)				March 2015	6.20	6.45	6.10	6.28	6.28	---	---	6.27	7.94	---	204	643	2,894
6.44	6.09	6.19	-3.28%	June 2015	---	---	---	---	6.44	---	---	6.28	8.06	---	---	---	2
				September 2015	---	---	---	---	6.44	---	---	---	---	---	---	---	---
				December 2015	---	---	---	---	6.47	---	---	---	---	---	---	---	---
(Contract Size: 100 Securities, Physical Delivery)																	

Underlying Asset				Derivatives Market													
Price max	Price min	Closing price	change	Delivery Month	Open price	Price max	Price min	Last price	Closing price	Last Bid	Last Ask	Settlement price	Life high	Life low	Trades	Volume	Open Interest
SIDENOR (CR)				(Contract Size: 100 Securities, Physical Delivery)													
0.713	0.680	0.689	-3.37%	March 2015	0.706	0.706	0.684	0.684	0.684	---	---	0.679	0.883	---	5	14	642
				June 2015	---	---	---	---	0.717	---	---	---	---	---	---	---	---
				September 2015	---	---	---	---	0.721	---	---	---	---	---	---	---	---
				December 2015	---	---	---	---	0.724	---	---	---	---	---	---	---	---
TERNA ENERGY (CR)				(Contract Size: 100 Securities, Physical Delivery)													
2.79	2.62	2.79	3.33%	March 2015	2.71	2.79	2.65	2.79	2.79	---	---	2.76	2.96	---	12	20	773
				June 2015	---	---	---	---	2.66	---	---	3.46	2.47	---	---	---	800
				September 2015	---	---	---	---	2.67	---	---	---	---	---	---	---	---
				December 2015	---	---	---	---	2.68	---	---	---	---	---	---	---	---
TITAN CEMENT (CR)				(Contract Size: 100 Securities, Physical Delivery)													
22.70	22.00	22.00	-1.96%	March 2015	22.46	22.64	22.04	22.04	22.04	---	---	21.79	24.50	---	15	45	474
				June 2015	---	---	---	---	22.57	---	---	---	---	---	---	---	---
				September 2015	---	---	---	---	22.59	---	---	---	---	---	---	---	---
				December 2015	---	---	---	---	22.70	---	---	---	---	---	---	---	---
VIOHALCO SA/NV (CB)				(Contract Size: 100 Securities, Physical Delivery)													
3.53	3.33	3.38	-3.98%	March 2015	3.47	3.50	3.35	3.35	3.35	---	---	3.26	4.09	---	24	74	254
				June 2015	---	---	---	---	3.54	---	---	---	---	---	---	---	---
				September 2015	---	---	---	---	3.56	---	---	---	---	---	---	---	---
				December 2015	---	---	---	---	3.58	---	---	---	---	---	---	---	---

FTSE/Athex Large Cap

(Trade Unit: 1 Index Point x 5€ - Exercise Style: European, Cash Settlement)

Exercise Price	Call Options														Put Options																		
	March 2015							April 2015							Other Months		March 2015							April 2015							Other Months		Exercise Price
	Open price	Price max	Price min	Last price	Closing price	Volume	Open Interest	Open price	Price max	Price min	Last price	Closing price	Volume	Open Interest	Volume	Open Interest	Open price	Price max	Price min	Last price	Closing price	Volume	Open Interest	Open price	Price max	Price min	Last price	Closing price	Volume	Open Interest	Volume	Open Interest	
180	0.00	0.00	0.00	-	70.00	-	24	-	-	-	-	-	-	-	-	0.00	0.00	0.00	-	0.36	-	-	-	-	-	-	-	-	-	-	-	180	
185	0.00	0.00	0.00	-	65.00	-	-	-	-	-	-	-	-	-	-	0.00	0.00	0.00	-	0.55	-	-	-	-	-	-	-	-	-	-	-	185	
190	0.00	0.00	0.00	-	60.50	-	-	-	-	-	-	-	-	-	-	0.00	0.00	0.00	-	0.82	-	-	-	-	-	-	-	-	-	-	-	190	
195	0.00	0.00	0.00	-	56.00	-	-	-	-	-	-	-	-	-	-	0.00	0.00	0.00	-	1.20	-	-	-	-	-	-	-	-	-	-	-	195	
200	0.00	0.00	0.00	-	51.50	-	30	0.00	0.00	0.00	-	56.00	-	-	-	0.00	0.00	0.00	-	1.70	-	1,084	0.00	0.00	0.00	-	6.80	-	-	-	200		
205	0.00	0.00	0.00	-	47.00	-	-	0.00	0.00	0.00	-	52.50	-	-	-	0.00	0.00	0.00	-	2.30	-	1	0.00	0.00	0.00	-	8.10	-	-	-	205		
210	0.00	0.00	0.00	-	42.75	-	-	0.00	0.00	0.00	-	49.00	-	-	-	0.00	0.00	0.00	-	3.10	-	205	0.00	0.00	0.00	-	9.50	-	-	-	210		
215	0.00	0.00	0.00	-	38.75	-	-	0.00	0.00	0.00	-	45.50	-	-	-	0.00	0.00	0.00	-	4.00	-	70	0.00	0.00	0.00	-	11.25	-	-	-	215		
220	0.00	0.00	0.00	-	35.00	-	25	0.00	0.00	0.00	-	42.25	-	-	-	0.00	0.00	0.00	-	5.20	-	13	0.00	0.00	0.00	-	13.00	-	-	-	220		
225	0.00	0.00	0.00	-	31.25	-	22	0.00	0.00	0.00	-	39.25	-	-	-	0.00	0.00	0.00	-	6.60	-	-	0.00	0.00	0.00	-	14.75	-	-	-	225		
230	0.00	0.00	0.00	-	28.00	-	61	0.00	0.00	0.00	-	36.25	-	-	-	0.00	0.00	0.00	-	8.20	-	65	0.00	0.00	0.00	-	17.00	-	-	-	230		
235	0.00	0.00	0.00	-	24.75	-	46	0.00	0.00	0.00	-	33.50	-	-	-	0.00	0.00	0.00	-	10.00	-	107	0.00	0.00	0.00	-	19.00	-	-	-	235		
240	0.00	0.00	0.00	-	21.75	-	110	0.00	0.00	0.00	-	31.00	-	-	-	0.00	0.00	10.00	10.00	10.00	3	40	0.00	0.00	0.00	-	21.50	-	-	-	240		
245	0.00	0.00	0.00	-	19.25	-	20	0.00	0.00	0.00	-	28.50	-	-	-	0.00	0.00	12.00	12.00	12.00	3	24	0.00	0.00	0.00	-	24.00	-	-	-	245		
250	15.00	15.00	13.00	13.75	13.75	205	378	0.00	0.00	0.00	-	26.25	-	-	-	15.00	15.00	14.00	14.00	14.00	3	91	0.00	0.00	0.00	-	26.75	-	-	-	250		
255	16.50	16.50	16.50	16.50	16.50	15	93	0.00	0.00	0.00	-	24.00	-	-	-	16.50	16.50	16.75	16.75	16.75	4	254	0.00	0.00	0.00	-	29.50	-	-	-	255		
260	11.00	13.00	11.00	13.00	13.00	101	114	0.00	0.00	0.00	-	22.00	-	-	-	11.00	13.00	25.00	25.00	25.00	10	113	0.00	0.00	0.00	-	32.50	-	-	-	260		
265	10.00	11.00	10.00	11.00	11.00	2	68	0.00	0.00	0.00	-	20.25	-	-	-	10.00	11.00	22.50	22.50	22.50	1	132	0.00	0.00	0.00	-	35.75	-	1	-	265		
270	0.00	0.00	0.00	-	9.20	-	196	0.00	0.00	0.00	-	18.50	-	-	-	0.00	0.00	0.00	-	29.50	-	70	0.00	0.00	0.00	-	39.00	-	-	-	270		
275	0.00	0.00	0.00	-	7.80	-	120	0.00	0.00	0.00	-	17.00	-	-	-	0.00	0.00	0.00	-	33.00	-	-	0.00	0.00	0.00	-	42.25	-	-	-	275		
280	0.00	0.00	0.00	-	6.60	-	156	0.00	0.00	0.00	-	15.50	-	-	-	0.00	0.00	0.00	-	36.75	-	-	0.00	0.00	0.00	-	45.75	-	-	-	280		
285	0.00	0.00	0.00	-	5.60	-	2,073	0.00	0.00	0.00	-	14.00	-	40	-	0.00	0.00	0.00	-	40.75	-	1	0.00	0.00	0.00	-	49.50	-	-	-	285		
290	0.00	0.00	0.00	-	4.70	-	70	0.00	0.00	0.00	-	12.75	-	-	-	0.00	0.00	0.00	-	45.00	-	-	0.00	0.00	0.00	-	53.00	-	-	-	290		
295	0.00	0.00	0.00	-	3.90	-	30	-	-	-	-	-	-	-	-	0.00	0.00	0.00	-	49.25	-	-	-	-	-	-	-	-	-	-	295		
300	20.00	3.10	2.30	3.10	3.10	920	1,530	-	-	-	-	-	-	-	-	20.00	3.10	0.00	-	53.50	-	-	-	-	-	-	-	-	-	-	300		
305	0.00	0.00	0.00	-	2.70	-	-	-	-	-	-	-	-	-	-	0.00	0.00	0.00	-	58.00	-	-	-	-	-	-	-	-	-	-	-	305	
310	0.00	0.00	0.00	-	2.20	-	50	-	-	-	-	-	-	-	-	0.00	0.00	0.00	-	62.50	-	4	-	-	-	-	-	-	-	-	-	310	
315	0.00	0.00	0.00	-	1.80	-	-	-	-	-	-	-	-	-	-	0.00	0.00	0.00	-	67.00	-	-	-	-	-	-	-	-	-	-	-	315	
320	0.00	0.00	0.00	-	1.50	-	1,045	-	-	-	-	-	-	-	-	0.00	0.00	0.00	-	71.50	-	-	-	-	-	-	-	-	-	-	-	320	
325	0.00	0.00	0.00	-	1.20	-	-	-	-	-	-	-	-	-	-	0.00	0.00	0.00	-	76.50	-	-	-	-	-	-	-	-	-	-	-	325	
330	0.00	0.00	0.00	-	1.00	-	-	-	-	-	-	-	-	-	-	0.00	0.00	0.00	-	81.00	-	-	-	-	-	-	-	-	-	-	-	330	
335	0.00	0.00	0.00	-	0.82	-	-	-	-	-	-	-	-	-	-	0.00	0.00	0.00	-	86.00	-	-	-	-	-	-	-	-	-	-	-	335	
340	0.00	0.00	0.00	-	0.66	-	-	-	-	-	-	-	-	-	-	0.00	0.00	0.00	-	91.00	-	-	-	-	-	-	-	-	-	-	-	340	
345	0.00	0.00	0.00	-	0.54	-	-	-	-	-	-	-	-	-	-	0.00	0.00	0.00	-	95.50	-	-	-	-	-	-	-	-	-	-	-	345	
350	0.00	0.00	0.00	-	0.43	-	-	-	-	-	-	-	-	-	-	0.00	0.00	0.00	-	101.00	-	-	-	-	-	-	-	-	-	-	-	350	
355	0.00	0.00	0.00	-	0.35	-	-	-	-	-	-	-	-	-	-	0.00	0.00	0.00	-	106.00	-	-	-	-	-	-	-	-	-	-	-	355	

FTSE/Athex Large Cap

(Trade Unit: 1 Index Point x 5€ - Exercise Style: European, Cash Settlement)

Exercise Price	Call Options														Put Options																		
	March 2015						April 2015						Other Months		March 2015						April 2015						Other Months		Exercise Price				
	Open price	Price max	Price min	Last price	Closing price	Volume	Open Interest	Open price	Price max	Price min	Last price	Closing price	Volume	Open Interest	Volume	Open Interest	Open price	Price max	Price min	Last price	Closing price	Volume	Open Interest	Open price	Price max	Price min	Last price	Closing price		Volume	Open Interest	Volume	Open Interest
360	0.00	0.00	0.00	-	0.28	-	-	-	-	-	-	-	-	-	-	-	0.00	0.00	0.00	-	110.00	-	-	-	-	-	-	-		-	-	-	-
365	0.00	0.00	0.00	-	0.22	-	-	-	-	-	-	-	-	-	-	-	0.00	0.00	0.00	-	115.00	-	-	-	-	-	-	-	-	-	-	-	365
370	0.00	0.00	0.00	-	0.18	-	-	-	-	-	-	-	-	-	-	-	0.00	0.00	0.00	-	120.00	-	-	-	-	-	-	-	-	-	-	-	370
375	0.00	0.00	0.00	-	0.14	-	-	-	-	-	-	-	-	-	-	-	0.00	0.00	0.00	-	125.00	-	-	-	-	-	-	-	-	-	-	-	375
380	0.00	0.00	0.00	-	0.11	-	-	-	-	-	-	-	-	-	-	-	0.00	0.00	0.00	-	130.00	-	-	-	-	-	-	-	-	-	-	-	380
385	0.00	0.00	0.00	-	0.09	-	-	-	-	-	-	-	-	-	-	-	0.00	0.00	0.00	-	135.00	-	-	-	-	-	-	-	-	-	-	-	385
390	0.00	0.00	0.00	-	0.07	-	-	-	-	-	-	-	-	-	-	-	0.00	0.00	0.00	-	140.00	-	-	-	-	-	-	-	-	-	-	-	390
395	0.00	0.00	0.00	-	0.05	-	-	-	-	-	-	-	-	-	-	-	0.00	0.00	0.00	-	145.00	-	-	-	-	-	-	-	-	-	-	-	395
400	0.00	0.00	0.00	-	0.04	-	-	-	-	-	-	-	-	-	-	-	0.00	0.00	0.00	-	150.00	-	-	-	-	-	-	-	-	-	-	-	400
405	0.00	0.00	0.00	-	0.03	-	-	-	-	-	-	-	-	-	-	-	0.00	0.00	0.00	-	155.00	-	-	-	-	-	-	-	-	-	-	-	405
410	0.00	0.00	0.00	-	0.03	-	-	-	-	-	-	-	-	-	-	-	0.00	0.00	0.00	-	160.00	-	-	-	-	-	-	-	-	-	-	-	410
415	0.00	0.00	0.00	-	0.02	-	-	-	-	-	-	-	-	-	-	-	0.00	0.00	0.00	-	165.00	-	-	-	-	-	-	-	-	-	-	-	415
420	0.00	0.00	0.00	-	0.02	-	-	-	-	-	-	-	-	-	-	-	0.00	0.00	0.00	-	170.00	-	-	-	-	-	-	-	-	-	-	-	420
425	0.00	0.00	0.00	-	0.01	-	-	-	-	-	-	-	-	-	-	-	0.00	0.00	0.00	-	175.00	-	-	-	-	-	-	-	-	-	-	-	425
430	0.00	0.00	0.00	-	0.01	-	-	-	-	-	-	-	-	-	-	-	0.00	0.00	0.00	-	180.00	-	-	-	-	-	-	-	-	-	-	-	430
435	0.00	0.00	0.00	-	0.01	-	-	-	-	-	-	-	-	-	-	-	0.00	0.00	0.00	-	185.00	-	-	-	-	-	-	-	-	-	-	-	435
440	0.00	0.00	0.00	-	0.01	-	-	-	-	-	-	-	-	-	-	-	0.00	0.00	0.00	-	190.00	-	-	-	-	-	-	-	-	-	-	-	440
445	0.00	0.00	0.00	-	0.03	-	-	-	-	-	-	-	-	-	-	-	0.00	0.00	0.00	-	195.00	-	-	-	-	-	-	-	-	-	-	-	445
450	0.00	0.00	0.00	-	0.02	-	-	-	-	-	-	-	-	-	-	-	0.00	0.00	0.00	-	200.00	-	24	-	-	-	-	-	-	-	-	-	450
455	0.00	0.00	0.00	-	0.02	-	-	-	-	-	-	-	-	-	-	-	0.00	0.00	0.00	-	205.00	-	-	-	-	-	-	-	-	-	-	-	455
Totals:						1,243	6,261					0	40	0	0						24	2,298					0	1	0	0			
Number of Trades:							13					0	0									8					0			0			

ALPHA BANK (CR)

(Contract Size: 100 Securities, Exercise Style: American, Physical Delivery)

Exercise Price	Call Options														Put Options																		
	March 2015							April 2015							Other Months		March 2015							April 2015							Other Months		Exercise Price
	Open price	Price max	Price min	Last price	Closing price	Volume	Open Interest	Open price	Price max	Price min	Last price	Closing price	Volume	Open Interest	Volume	Open Interest	Open price	Price max	Price min	Last price	Closing price	Volume	Open Interest	Open price	Price max	Price min	Last price	Closing price	Volume	Open Interest	Volume	Open Interest	
0.100	0.000	0.000	0.000	0.240	-	-	0.000	0.000	0.000	0.240	-	-				0.000	0.000	0.000	0.001	-	-	0.000	0.000	0.000	0.001	-	-				0.001		
0.200	0.000	0.000	0.000	0.140	-	-	0.000	0.000	0.000	0.142	-	-				0.000	0.000	0.000	0.001	-	-	0.000	0.000	0.000	0.002	-	-				0.002		
0.300	0.000	0.000	0.000	0.050	-	-	0.000	0.000	0.000	0.065	-	-				0.000	0.000	0.000	0.010	-	-	0.000	0.000	0.000	0.025	-	-				0.003		
0.400	0.000	0.000	0.000	0.008	-	40	0.000	0.000	0.000	0.024	-	-				0.000	0.000	0.000	0.068	-	-	0.000	0.000	0.000	0.084	-	-				0.004		
0.500	0.000	0.000	0.000	0.001	-	-	0.000	0.000	0.000	0.008	-	-				0.000	0.000	0.000	0.161	-	-	0.000	0.000	0.000	0.167	-	-				0.005		
0.600	0.000	0.000	0.000	0.002	-	-	0.000	0.000	0.000	0.002	-	-				0.000	0.000	0.000	0.260	-	-	0.000	0.000	0.000	0.262	-	-				0.006		
0.700	0.000	0.000	0.000	0.001	-	-	0.000	0.000	0.000	0.001	-	-				0.000	0.000	0.000	0.360	-	-	0.000	0.000	0.000	0.360	-	-				0.007		
0.800	0.000	0.000	0.000	0.001	-	-	0.000	0.000	0.000	0.002	-	-				0.000	0.000	0.000	0.460	-	-	0.000	0.000	0.000	0.460	-	-				0.008		
0.900	0.000	0.000	0.000	0.001	-	-	0.000	0.000	0.000	0.001	-	-				0.000	0.000	0.000	0.560	-	-	0.000	0.000	0.000	0.560	-	-				0.009		
1.000	0.000	0.000	0.000	0.001	-	-					-	-				0.000	0.000	0.000	0.660	-	-					-	-				0.010		
1.100	0.000	0.000	0.000	0.001	-	-					-	-				0.000	0.000	0.000	0.760	-	-					-	-				0.011		
Totals:					0	40					0	0	0	0					0	0					0	0	0	0					
Number of Trades:					0						0		0						0.00						0		0						

NATIONAL BANK (CR)

(Contract Size: 100 Securities, Exercise Style: American, Physical Delivery)

Call Options																Put Options																
March 2015								April 2015								Other Months		March 2015								April 2015				Other Months		Exercise Price
Open price	Price max	Price min	Last price	Closing price	Volume	Open Interest	Open price	Price max	Price min	Last price	Closing price	Volume	Open Interest	Volume	Open Interest	Open price	Price max	Price min	Last price	Closing price	Volume	Open Interest	Open price	Price max	Price min	Last price	Closing price	Volume	Open Interest	Volume	Open Interest	
0.600	0.000	0.000	0.000	0.651	-	-	0.000	0.000	0.000	0.000	0.653	-	-			0.000	0.000	0.000	0.003	-	-	0.000	0.000	0.000	0.002	-	-			0.006		
0.700	0.000	0.000	0.000	0.551	-	-	0.000	0.000	0.000	0.000	0.557	-	-			0.000	0.000	0.000	0.001	-	-	0.000	0.000	0.000	0.006	-	-			0.007		
0.800	0.000	0.000	0.000	0.452	-	-	0.000	0.000	0.000	0.000	0.467	-	-			0.000	0.000	0.000	0.001	-	-	0.000	0.000	0.000	0.015	-	-			0.008		
0.900	0.000	0.000	0.000	0.356	-	-	0.000	0.000	0.000	0.000	0.385	-	-			0.000	0.000	0.000	0.005	-	-	0.000	0.000	0.000	0.033	-	-			0.009		
1.000	0.000	0.000	0.000	0.267	-	10	0.000	0.000	0.000	0.000	0.311	-	-			0.000	0.000	0.000	0.016	-	-	0.000	0.000	0.000	0.059	-	-			0.010		
1.100	0.000	0.000	0.000	0.190	-	-	0.000	0.000	0.000	0.000	0.248	-	-			0.000	0.000	0.000	0.040	-	10	0.000	0.000	0.000	0.096	-	-			0.011		
1.200	0.000	0.000	0.000	0.129	-	-	0.000	0.000	0.000	0.000	0.195	-	-			0.000	0.000	0.000	0.078	-	-	0.000	0.000	0.000	0.143	-	-			0.012		
1.300	0.000	0.000	0.000	0.083	-	20	0.000	0.000	0.000	0.000	0.152	-	-			0.000	0.000	0.000	0.132	-	310	0.000	0.000	0.000	0.199	-	-			0.013		
1.400	0.000	0.000	0.000	0.050	-	-	0.000	0.000	0.000	0.000	0.117	-	-			0.000	0.000	0.000	0.199	-	-	0.000	0.000	0.000	0.263	-	-			0.014		
1.500	0.000	0.000	0.000	0.030	-	-	0.000	0.000	0.000	0.000	0.089	-	-			0.000	0.000	0.000	0.278	-	-	0.000	0.000	0.000	0.336	-	-			0.015		
1.600	0.000	0.000	0.000	0.017	-	-	0.000	0.000	0.000	0.000	0.068	-	-			0.000	0.000	0.000	0.366	-	-	0.000	0.000	0.000	0.415	-	-			0.016		
1.700	0.000	0.000	0.000	0.009	-	-	0.000	0.000	0.000	0.000	0.051	-	-			0.000	0.000	0.000	0.458	-	-	0.000	0.000	0.000	0.498	-	-			0.017		
1.800	0.000	0.000	0.000	0.005	-	-	0.000	0.000	0.000	0.000	0.038	-	-			0.000	0.000	0.000	0.554	-	-	0.000	0.000	0.000	0.585	-	-			0.018		
1.900	0.000	0.000	0.000	0.002	-	-	0.000	0.000	0.000	0.000	0.029	-	-			0.000	0.000	0.000	0.652	-	-	0.000	0.000	0.000	0.675	-	-			0.019		
2.000	0.000	0.000	0.000	0.001	-	-						-	-			0.000	0.000	0.000	0.751	-	-					-	-			0.020		
2.200	0.000	0.000	0.000	0.006	-	-						-	-			0.000	0.000	0.000	0.950	-	-					-	-			0.022		
2.400	0.000	0.000	0.000	0.002	-	-						-	-			0.000	0.000	0.000	1.15	-	-					-	-			0.024		
2.600	0.000	0.000	0.000	0.001	-	-						-	-			0.000	0.000	0.000	1.35	-	-					-	-			0.026		
2.800	0.000	0.000	0.000	0.001	-	-						-	-			0.000	0.000	0.000	1.55	-	-					-	-			0.028		
3.000	0.000	0.000	0.000	0.001	-	-						-	-			0.000	0.000	0.000	1.75	-	-					-	-			0.030		
3.200	0.000	0.000	0.000	0.001	-	-						-	-			0.000	0.000	0.000	1.95	-	-					-	-			0.032		
3.400	0.000	0.000	0.000	0.001	-	-						-	-			0.000	0.000	0.000	2.15	-	-					-	-			0.034		
3.600	0.000	0.000	0.000	0.001	-	-						-	-			0.000	0.000	0.000	2.35	-	-					-	-			0.036		
3.800	0.000	0.000	0.000	0.001	-	-						-	-			0.000	0.000	0.000	2.55	-	-					-	-			0.038		
4.000	0.000	0.000	0.000	0.001	-	-						-	-			0.000	0.000	0.000	2.75	-	-					-	-			0.040		
4.400	0.000	0.000	0.000	0.001	-	-						-	-			0.000	0.000	0.000	3.15	-	-					-	-			0.044		
4.800	0.000	0.000	0.000	0.001	-	-						-	-			0.000	0.000	0.000	3.55	-	-					-	-			0.048		
5.200	0.000	0.000	0.000	0.002	-	-						-	-			0.000	0.000	0.000	3.95	-	-					-	-			0.052		
5.600	0.000	0.000	0.000	0.001	-	-						-	-			0.000	0.000	0.000	4.35	-	-					-	-			0.056		
Totals:					0	30						0	0	0	0	0					0	320					0	0	0	0	0	
Number of Trades:					0							0	0	0								0.00					0			0		

OPAP (CR)

(Contract Size: 100 Securities, Exercise Style: American, Physical Delivery)

Exercise Price	Call Options														Put Options																	
	March 2015						April 2015						Other Months		March 2015						April 2015						Other Months		Exercise Price			
	Open price	Price max	Price min	Last price	Closing price	Volume	Open Interest	Open price	Price max	Price min	Last price	Closing price	Volume	Open Interest	Volume	Open Interest	Open price	Price max	Price min	Last price	Closing price	Volume	Open Interest	Open price	Price max	Price min	Last price	Closing price		Volume	Open Interest	Volume
6.000	0.000	0.000	0.000	2.71	-	-	0.000	0.000	0.000	2.75	-	-				0.000	0.000	0.000	0.003	-	-	0.000	0.000	0.000	0.040	-	-					0.060
6.400	0.000	0.000	0.000	2.31	-	-	0.000	0.000	0.000	2.39	-	-				0.000	0.000	0.000	0.009	-	-	0.000	0.000	0.000	0.077	-	-				0.064	
6.800	0.000	0.000	0.000	1.93	-	-	0.000	0.000	0.000	2.05	-	-				0.000	0.000	0.000	0.027	-	-	0.000	0.000	0.000	0.135	-	-				0.068	
7.200	0.000	0.000	0.000	1.57	-	-	0.000	0.000	0.000	1.73	-	-				0.000	0.000	0.000	0.063	-	-	0.000	0.000	0.000	0.216	-	-				0.072	
7.600	0.000	0.000	0.000	1.23	-	-	0.000	0.000	0.000	1.44	-	-				0.000	0.000	0.000	0.128	-	-	0.000	0.000	0.000	0.326	-	-				0.076	
8.000	0.000	0.000	0.000	0.939	-	-	0.000	0.000	0.000	1.19	-	-				0.000	0.000	0.000	0.232	-	-	0.000	0.000	0.000	0.475	-	-				0.080	
8.400	0.000	0.000	0.000	0.692	-	-	0.000	0.000	0.000	0.973	-	-				0.000	0.000	0.000	0.385	-	-	0.000	0.000	0.000	0.654	-	-				0.084	
8.800	0.000	0.000	0.000	0.492	-	-	0.000	0.000	0.000	0.780	-	-				0.000	0.000	0.000	0.585	-	-	0.000	0.000	0.000	0.860	-	-				0.088	
9.200	0.000	0.000	0.000	0.338	-	-	0.000	0.000	0.000	0.619	-	-				0.000	0.000	0.000	0.831	-	-	0.000	0.000	0.000	1.10	-	-				0.092	
9.600	0.000	0.000	0.000	0.224	-	-	0.000	0.000	0.000	0.490	-	-				0.000	0.000	0.000	1.12	-	-	0.000	0.000	0.000	1.37	-	-				0.096	
10.000	0.000	0.000	0.000	0.144	-	-	0.000	0.000	0.000	0.377	-	-				0.000	0.000	0.000	1.44	-	-	0.000	0.000	0.000	1.66	-	-				0.100	
11.000	0.000	0.000	0.000	0.042	-	-	0.000	0.000	0.000	0.197	-	-				0.000	0.000	0.000	2.34	-	-	0.000	0.000	0.000	2.48	-	-				0.110	
12.000	0.000	0.000	0.000	0.010	-	-	0.000	0.000	0.000	0.095	-	-				0.000	0.000	0.000	3.31	-	-	0.000	0.000	0.000	3.38	-	-				0.120	
13.000	0.000	0.000	0.000	0.002	-	-					-	-				0.000	0.000	0.000	4.30	-	-					-	-				0.130	
14.000	0.000	0.000	0.000	0.001	-	-					-	-				0.000	0.000	0.000	5.30	-	-					-	-				0.140	
15.000	0.000	0.000	0.000	0.002	-	-					-	-				0.000	0.000	0.000	6.30	-	-					-	-				0.150	
16.000	0.000	0.000	0.000	0.007	-	-					-	-				0.000	0.000	0.000	7.30	-	-					-	-				0.160	
17.000					-	-					-	-								-	-					-	-				0.170	
18.000					-	-					-	-								-	-					-	-				0.180	
Totals:					0	0					0	0		0	0					0	0					0	0		0	0		
Number of Trades:					0					0		0							0.00							0			0			

OTE (CR)

(Contract Size: 100 Securities, Exercise Style: American, Physical Delivery)

Exercise Price	Call Options														Put Options														Exercise Price								
	March 2015							April 2015							Other Months		March 2015							April 2015							Other Months						
	Open price	Price max	Price min	Last price	Closing price	Volume	Open Interest	Open price	Price max	Price min	Last price	Closing price	Volume	Open Interest	Volume	Open Interest	Open price	Price max	Price min	Last price	Closing price	Volume	Open Interest	Open price	Price max	Price min	Last price	Closing price		Volume	Open Interest	Volume	Open Interest				
6.000						-	-							-	-							-	-							-	-						0.060
6.400	0.000	0.000	0.000		2.67	-	-	0.000	0.000	0.000		2.71	-	-		0.000	0.000	0.000		0.001	-	-	0.000	0.000	0.000		0.036	-	-						0.064		
6.800	0.000	0.000	0.000		2.27	-	-	0.000	0.000	0.000		2.35	-	-		0.000	0.000	0.000		0.006	-	-	0.000	0.000	0.000		0.071	-	-						0.068		
7.200	0.000	0.000	0.000		1.88	-	-	0.000	0.000	0.000		2.00	-	-		0.000	0.000	0.000		0.018	-	20	0.000	0.000	0.000		0.125	-	-						0.072		
7.600	0.000	0.000	0.000		1.52	-	-	0.000	0.000	0.000		1.68	-	-		0.000	0.000	0.000		0.049	-	-	0.000	0.000	0.000		0.204	-	-						0.076		
8.000	0.000	0.000	0.000		1.18	-	-	0.000	0.000	0.000		1.39	-	-		0.000	0.000	0.000		0.108	-	-	0.000	0.000	0.000		0.313	-	-						0.080		
8.400	0.000	0.000	0.000		0.873	-	5	0.000	0.000	0.000		1.14	-	-		0.000	0.000	0.000		0.205	-	-	0.000	0.000	0.000		0.459	-	-						0.084		
8.800	0.000	0.000	0.000		0.625	-	50	0.000	0.000	0.000		0.919	-	-		0.000	0.000	0.000		0.357	-	-	0.000	0.000	0.000		0.639	-	-						0.088		
9.200	0.000	0.000	0.000		0.428	-	-	0.000	0.000	0.000		0.728	-	-		0.000	0.000	0.000		0.560	-	-	0.000	0.000	0.000		0.847	-	-						0.092		
9.600	0.000	0.000	0.000		0.280	-	-	0.000	0.000	0.000		0.566	-	-		0.000	0.000	0.000		0.812	-	-	0.000	0.000	0.000		1.08	-	-						0.096		
10.000	0.000	0.000	0.000		0.175	-	-	0.000	0.000	0.000		0.443	-	-		0.000	0.000	0.000		1.11	-	-	0.000	0.000	0.000		1.36	-	-						0.100		
11.000	0.000	0.000	0.000		0.044	-	-	0.000	0.000	0.000		0.220	-	-		0.000	0.000	0.000		1.98	-	-	0.000	0.000	0.000		2.14	-	-						0.110		
12.000	0.000	0.000	0.000		0.009	-	-	0.000	0.000	0.000		0.105	-	-		0.000	0.000	0.000		2.94	-	-	0.000	0.000	0.000		3.02	-	-						0.120		
13.000	0.000	0.000	0.000		0.002	-	-					-	-		0.000	0.000	0.000		3.94	-	-					-	-								0.130		
14.000	0.000	0.000	0.000		0.001	-	-					-	-		0.000	0.000	0.000		4.94	-	-					-	-								0.140		
15.000	0.000	0.000	0.000		0.001	-	-					-	-		0.000	0.000	0.000		5.94	-	-					-	-								0.150		
16.000	0.000	0.000	0.000		0.001	-	-					-	-		0.000	0.000	0.000		6.94	-	-					-	-								0.160		
Totals:						0	55					0	0	0	0						0	20					0	0	0	0							
Number of Trades:						0						0		0							0.00						0		0								

PIRAEUS BANK (CR)

(Contract Size: 100 Securities, Exercise Style: American, Physical Delivery)

Exercise Price	Call Options														Put Options																			
	March 2015							April 2015							Other Months		March 2015							April 2015							Other Months		Exercise Price	
	Open price	Price max	Price min	Last price	Closing price	Volume	Open Interest	Open price	Price max	Price min	Last price	Closing price	Volume	Open Interest	Volume	Open Interest	Open price	Price max	Price min	Last price	Closing price	Volume	Open Interest	Open price	Price max	Price min	Last price	Closing price	Volume	Open Interest	Volume	Open Interest		
0.200						-	-						-	-								-	-											
0.300	0.000	0.000	0.000		0.176	-	-	0.000	0.000	0.000		0.180	-	-			0.000	0.000	0.000		0.001	-	-	0.000	0.000	0.000		0.004	-	-			0.003	
0.400	0.000	0.000	0.000		0.084	-	-	0.000	0.000	0.000		0.103	-	-			0.000	0.000	0.000		0.009	-	-	0.000	0.000	0.000		0.027	-	-			0.004	
0.500	0.000	0.000	0.000		0.027	-	-	0.080	0.080	0.080	0.080	0.080	80	80			0.000	0.000	0.000		0.052	-	-	0.000	0.000	0.000		0.077	-	-			0.005	
0.600	0.000	0.000	0.000		0.006	-	96	0.000	0.000	0.000		0.025	-	-			0.000	0.000	0.000		0.131	-	-	0.000	0.000	0.000		0.149	-	-			0.006	
0.700	0.000	0.000	0.000		0.001	-	9	0.000	0.000	0.000		0.011	-	-			0.000	0.000	0.000		0.226	-	-	0.000	0.000	0.000		0.235	-	-			0.007	
0.800	0.000	0.000	0.000		0.001	-	-	0.000	0.000	0.000		0.005	-	-			0.000	0.000	0.000		0.325	-	-	0.000	0.000	0.000		0.329	-	-			0.008	
0.900	0.000	0.000	0.000		0.004	-	-	0.000	0.000	0.000		0.002	-	-			0.000	0.000	0.000		0.425	-	-	0.000	0.000	0.000		0.426	-	-			0.009	
1.000	0.000	0.000	0.000		0.001	-	-	0.000	0.000	0.000		0.001	-	-			0.000	0.000	0.000		0.525	-	-	0.000	0.000	0.000		0.525	-	-			0.010	
1.100	0.000	0.000	0.000		0.005	-	-	0.000	0.000	0.000		0.001	-	-			0.000	0.000	0.000		0.625	-	-	0.000	0.000	0.000		0.625	-	-			0.011	
1.200	0.000	0.000	0.000		0.002	-	-	0.000	0.000	0.000		0.003	-	-			0.000	0.000	0.000		0.725	-	-	0.000	0.000	0.000		0.725	-	-			0.012	
1.300	0.000	0.000	0.000		0.001	-	-	0.000	0.000	0.000		0.002	-	-			0.000	0.000	0.000		0.825	-	-	0.000	0.000	0.000		0.825	-	-			0.013	
1.400	0.000	0.000	0.000		0.001	-	-						-	-			0.000	0.000	0.000		0.925	-	-										0.014	
1.500	0.000	0.000	0.000		0.004	-	-						-	-			0.000	0.000	0.000		1.03	-	-										0.015	
1.600	0.000	0.000	0.000		0.002	-	-						-	-			0.000	0.000	0.000		1.13	-	-										0.016	
1.700	0.000	0.000	0.000		0.001	-	-						-	-			0.000	0.000	0.000		1.23	-	-										0.017	
1.800	0.000	0.000	0.000		0.001	-	-						-	-			0.000	0.000	0.000		1.33	-	-										0.018	
1.900	0.000	0.000	0.000		0.001	-	-						-	-			0.000	0.000	0.000		1.43	-	-										0.019	
2.000	0.000	0.000	0.000		0.001	-	-						-	-			0.000	0.000	0.000		1.53	-	-										0.020	
2.200	0.000	0.000	0.000		0.001	-	-						-	-			0.000	0.000	0.000		1.73	-	-										0.022	
2.400	0.000	0.000	0.000		0.001	-	-						-	-			0.000	0.000	0.000		1.93	-	-										0.024	
2.600	0.000	0.000	0.000		0.001	-	-						-	-			0.000	0.000	0.000		2.13	-	-										0.026	
2.800	0.000	0.000	0.000		0.001	-	-						-	-			0.000	0.000	0.000		2.33	-	-										0.028	
Totals:						0	105					80	80	0	0							0	0											
Number of Trades:						0						3		0								0.00												

PPC (CR)

(Contract Size: 100 Securities, Exercise Style: American, Physical Delivery)

Exercise Price	Call Options														Put Options																				
	March 2015							April 2015							Other Months		March 2015							April 2015							Other Months		Exercise Price		
	Open price	Price max	Price min	Last price	Closing price	Volume	Open Interest	Open price	Price max	Price min	Last price	Closing price	Volume	Open Interest	Volume	Open Interest	Open price	Price max	Price min	Last price	Closing price	Volume	Open Interest	Open price	Price max	Price min	Last price	Closing price	Volume	Open Interest	Volume	Open Interest			
3.600						-	-	0.000	0.000	0.000		2.81	-	-																					
3.800	0.000	0.000	0.000		2.60	-	-	0.000	0.000	0.000		2.61	-	-			0.000	0.000	0.000		0.001	-	-			0.000	0.000	0.000		0.003	-	-			0.038
4.000	0.000	0.000	0.000		2.40	-	-	0.000	0.000	0.000		2.42	-	-			0.000	0.000	0.000		0.002	-	-			0.000	0.000	0.000		0.007	-	-			0.040
4.400	0.000	0.000	0.000		2.00	-	-	0.000	0.000	0.000		2.03	-	-			0.000	0.000	0.000		0.001	-	-			0.000	0.000	0.000		0.021	-	-			0.044
4.800	0.000	0.000	0.000		1.61	-	-	0.000	0.000	0.000		1.67	-	-			0.000	0.000	0.000		0.006	-	-			0.000	0.000	0.000		0.056	-	-			0.048
5.200	0.000	0.000	0.000		1.23	-	-	0.000	0.000	0.000		1.33	-	-			0.000	0.000	0.000		0.027	-	-			0.000	0.000	0.000		0.119	-	-			0.052
5.600	0.000	0.000	0.000		0.887	-	-	0.000	0.000	0.000		1.03	-	-			0.000	0.000	0.000		0.083	-	-			0.000	0.000	0.000		0.219	-	-			0.056
6.000	0.000	0.000	0.000		0.597	-	5	0.000	0.000	0.000		0.778	-	-			0.000	0.000	0.000		0.192	-	20			0.000	0.000	0.000		0.364	-	-			0.060
6.400	0.000	0.000	0.000		0.370	-	-	0.000	0.000	0.000		0.571	-	-			0.000	0.000	0.000		0.365	-	-			0.000	0.000	0.000		0.557	-	-			0.064
6.800	0.000	0.000	0.000		0.217	-	-	0.000	0.000	0.000		0.410	-	-			0.000	0.000	0.000		0.611	-	-			0.000	0.000	0.000		0.795	-	-			0.068
7.200	0.000	0.000	0.000		0.116	-	-	0.000	0.000	0.000		0.289	-	-			0.000	0.000	0.000		0.910	-	-			0.000	0.000	0.000		1.07	-	-			0.072
7.600	0.000	0.000	0.000		0.058	-	-	0.000	0.000	0.000		0.200	-	-			0.000	0.000	0.000		1.25	-	-			0.000	0.000	0.000		1.38	-	-			0.076
8.000	0.000	0.000	0.000		0.028	-	-	0.000	0.000	0.000		0.135	-	-			0.000	0.000	0.000		1.62	-	-			0.000	0.000	0.000		1.72	-	-			0.080
8.400	0.000	0.000	0.000		0.012	-	-	0.000	0.000	0.000		0.089	-	-			0.000	0.000	0.000		2.01	-	-			0.000	0.000	0.000		2.07	-	-			0.084
8.800	0.000	0.000	0.000		0.005	-	-						-	-			0.000	0.000	0.000		2.40	-	-							-	-			0.088	
9.200	0.000	0.000	0.000		0.002	-	-						-	-			0.000	0.000	0.000		2.80	-	-							-	-			0.092	
9.600	0.000	0.000	0.000		0.001	-	-						-	-			0.000	0.000	0.000		3.20	-	-							-	-			0.096	
10.000	0.000	0.000	0.000		0.001	-	-						-	-			0.000	0.000	0.000		3.60	-	-							-	-			0.100	
11.000	0.000	0.000	0.000		0.004	-	-						-	-			0.000	0.000	0.000		4.60	-	-							-	-			0.110	
12.000	0.000	0.000	0.000		0.001	-	-						-	-			0.000	0.000	0.000		5.60	-	-							-	-			0.120	
13.000	0.000	0.000	0.000		0.003	-	-						-	-			0.000	0.000	0.000		6.60	-	-							-	-			0.130	
14.000	0.000	0.000	0.000		0.001	-	-						-	-			0.000	0.000	0.000		7.60	-	-							-	-			0.140	
15.000	0.000	0.000	0.000		0.001	-	-						-	-			0.000	0.000	0.000		8.60	-	-							-	-			0.150	
16.000						-	-						-	-								-	-							-	-			0.160	
Totals:						0	5						0	0	0	0					0	20							0	0	0	0			
Number of Trades:						0							0		0						0.00								0		0				

Lending Products	Underlying Title	Multilateral Transactions[1]					Bilateral Transactions[2]		Stock Borrowing through OTC (volume)[3]
		Open Interest[5]	Volume(Offered)	Average Weighted	Transactions volume	Average Weighted	Transactions Volume	Average Weighted	Transactions Volume
AEGBOR	AEGEAN AIRLINES (CR)	248	20,400	5.31%	---	---	---	---	643
ALPHABOR	ALPHA BANK (CR)	1,132,085	3,967,762	5.31%	---	---	---	---	45,648,319
AETFBOR	ALPHA ETF FTSE Athex Large Cap	---	---	---	---	---	---	---	---
ALMYBOR	ALUMIL (CR)	---	---	---	---	---	---	---	---
IATRBOR	ATHENS MEDICAL CENTER SA (CR)	---	38,078	5.31%	---	---	---	---	---
TATTBOR	ATTICA BANK S.A. (CR)	---	162,569	5.31%	---	---	---	---	---
OTOELBOR	AUTOHELLAS SA (CR)	---	958	5.31%	---	---	---	---	---
BIOKABOR	BIOKARPET S.A.(CR)	---	---	---	---	---	---	---	---
EEEBOR	CC HBC AG (CR)	5,841	---	---	---	---	---	---	74,576
CENTRBOR	CENTRIC HOLDINGS (CR)	---	16,000	5.31%	---	---	---	---	---
SOLKBOR	CORINTH PIPEWORKS SA (CR)	831	6,136	3.31%	---	---	---	---	---
PLAKRBOR	CRETE PLASTICS SA (CR)	---	---	---	---	---	---	---	---
DROMEBOB	DROMEAS SA (CR)	---	---	---	---	---	---	---	---
ELGEBOR	ELGEKA SA (CR)	---	---	---	---	---	---	---	---
ELLAKTORBOR	ELLAKTOR (CR)	63,510	43,734	3.31%	5,000	2.65%	---	---	7,900
ELBABOR	ELVAL SA. (CB)	---	35,344	5.31%	---	---	---	---	---
EUROBBOR	EUROBANK ERGASIAS (CR)	301,245	409,926	5.31%	---	---	---	---	49,116,152
EUPICBOR	EUROPEAN RELIANCE INSUR. (CR)	---	---	---	---	---	---	---	---
EYDAPBOR	EYDAP S.A. (CR)	5,999	5,520	5.31%	---	---	---	---	18,015
FGEBOR	F.G. EUROPE S.A. (CR)	---	---	---	---	---	---	---	---
FFGRPBOR	FOLLI FOLLIE (CR)	25,241	54,856	5.31%	4,100	3.43%	---	---	991,660
FOYRKBOR	FOURLIS (CR)	1,000	2,330	3.31%	---	---	---	---	3,850
FRIGOBOR	FRIGOGLOSS SA (CR)	2,100	5,519	5.31%	---	---	---	---	---
GEKTERNABOR	GEK TERNA (CR)	5,974	21,067	5.31%	---	---	---	---	---
SARBOR	GR. SARANTIS SA (CR)	---	---	---	---	---	---	---	---
EUPROBOR	GRIVALIA PROPERTIES (CR)	16,778	69,147	3.31%	---	---	---	---	47,473
XAKOBOR	HALKOR SA (CB)	---	48,551	5.31%	---	---	---	---	---
EXAEBOR	HELLENIC EXCHANGES-A.S.E. (CR)	59,045	448,884	5.31%	---	---	---	---	130,000
ELPEBOR	HELLENIC PETROLEUM (CR)	1,000	204,359	5.31%	---	---	---	---	57,265
HYGEIABOR	HYGEIA SA (CR)	---	176,699	5.31%	---	---	---	---	---
IASOBOR	IASO SA (CR)	---	27,878	5.31%	---	---	---	---	---

Stock Lending Notes

[1] - Multilateral contracts Lending or Borrowing as per Methods 8-1, 8-2 and 8-3-3 (According to ATHEX BoD Resolution No.17)

[2] - Bilateral Contracts Lending or Borrowing as per Methods 8-3-1 and 8-3-2 (According to ATHEX BoD Resolution No.20)

[3] - The information concerning OTC Stock Borrowing Transactions is based on the statements of the Dematerialised Securities System (DSS) operators involved and refers to volumes that have been cleared and registered up until the previous working day.

[4] - Average Price (Volume weighted)

[5] - The Data concerning Open Interest before the start of trading session

Lending Products	Underlying Title	Multilateral Transactions[1]					Bilateral Transactions[2]		Stock Borrowing through OTC (volume)[3]
		Open Interest[5]	Volume(Offered)	Average Weighted	Transactions volume	Average Weighted	Transactions Volume	Average Weighted	Transactions Volume
IKTINBOR	IKTINOS HELLAS SA (CR)	---	---	---	---	---	---	---	
LYKBOR	INFORM P. LYKOS SA (CR)	---	483	5.31%	---	---	---	---	
INKATBOR	INTRACOM CONSTR. (CR)	---	---	---	---	---	---	---	
INTRKBOR	INTRACOM HOLDINGS (CR)	---	109,050	5.31%	---	---	---	---	
INLOTBOR	INTRALOT (CR)	44,948	45,693	5.31%	8,341	3.84%	---	156,094	
AVAXBOR	J & P - AVAX SA (CR)	---	20,175	5.31%	---	---	---	---	
BELABOR	JUMBO SA (CR)	59,965	93,690	5.31%	---	---	---	3,760	
KARTZBOR	KARATZIS SA (CR)	---	---	---	---	---	---	---	
KLEMBOR	KLEEMAN HELLAS SA (CR)	---	17,510	5.31%	---	---	---	---	
KRIBOR	KRI-KRI S.A. (CR)	---	46,268	5.31%	---	---	---	---	
LAMDABOR	LAMDA DEVELOPMENT SA (CR)	---	---	---	---	---	---	10,377	
MIGBOR	MARFIN INVESTMENT GROUP (CR)	1,443	127,293	5.31%	---	---	---	744,474	
METKKBOR	METKA (CR)	17,237	6,911	5.31%	---	---	---	1,055	
MLSBOR	MLS MULTIMEDIA SA (CR)	---	7,920	5.31%	---	---	---	---	
MOHBOR	MOTOR OIL (CR)	49,291	35,003	5.31%	---	---	---	36,448	
MYTILBOR	MYTILINEOS HOLDINGS (CR)	32,259	152,709	5.31%	---	---	---	---	
ETEBOR	NATIONAL BANK (CR)	260,997	217,695	4.24%	---	---	---	2,341,759	
ETFASEBOR	NBGAM ETF	---	---	---	---	---	---	---	
ETFGT30PBOR	NBGAM ETF GREECE & TURKEY 30	---	---	---	---	---	---	---	
OPAPBOR	OPAP (CR)	59,439	128,317	3.31%	---	---	---	712,851	
HTOBOR	OTE (CR)	10,100	43,460	5.31%	---	---	---	215,477	
PPABOR	P.P.A. S.A. (CR)	705	18	9.57%	18	9.57%	---	151	
PAPBOR	PAPOUTSANIS (CR)	---	---	---	---	---	---	---	
PETROBOR	PETROPOULOS PETROS (CR)	---	---	---	---	---	---	---	
TPEIRBOR	PIRAEUS BANK (CR)	154,194	142,549	5.31%	---	---	---	34,380,117	
PLAISBOR	PLAISIO COMPUTERS SA (CR)	---	---	---	---	---	---	---	
PPCBOR	PPC (CR)	62,404	39,998	3.55%	---	---	---	752,397	
PROFBOR	PROFILE SA (CR)	---	---	---	---	---	---	---	
QUALBOR	QUALITY & RELIABILITY SA (CR)	---	---	---	---	---	---	---	
QUESTBOR	QUEST HOLDINGS (CR)	---	822	5.31%	---	---	---	---	
SIDEBOR	SIDENOR (CR)	2,031	27,543	3.31%	---	---	---	---	

Stock Lending Notes

[1] - Multilateral contracts Lending or Borrowing as per Methods 8-1, 8-2 and 8-3-3 (According to ATHEX BoD Resolution No.17)

[2] - Bilateral Contracts Lending or Borrowing as per Methods 8-3-1 and 8-3-2 (According to ATHEX BoD Resolution No.20)

[3] - The information concerning OTC Stock Borrowing Transactions is based on the statements of the Dematerialised Securities System (DSS) operators involved and refers to volumes that have been cleared and registered up until the previous working day.

[4] - Average Price (Volume weighted)

[5] - The Data concerning Open Interest before the start of trading session

Lending Products	Underlying Title	Open Interest[5]	Multilateral Transactions[1]				Bilateral Transactions[2]		Stock Borrowing through OTC (volume)[3]	
			Volume(Offered)	Average Weighted	Transactions volume	Average Weighted	Transactions Volume	Average Weighted	Transactions Volume	
OLYMPBOR	TECHNICAL OLYMPIC SA (CR)	---	---	---	---	---	---	---	---	
TENERGYBOR	TERNA ENERGY (CR)	10,811	19,313	5.31%	---	---	---	---	---	
EYAPSBOR	THESSALONIKA WATER & SEWERAGE	---	798	5.31%	---	---	---	---	---	
PLATBOR	THRACE PLASTICS SA (CR)	---	36,559	5.31%	---	---	---	---	---	
TITKBOR	TITAN CEMENT (CR)	41,900	202,950	5.31%	---	---	---	---	381,174	
OLTHBOR	TPA SA (CR)	---	3,278	5.31%	---	---	---	---	---	
TRASTORBOR	TRASTOR REAL EST. INV. CO.(CR)	---	7,580	5.31%	---	---	---	---	---	
VIOBOR	VIOHALCO SA/NV (CB)	23,627	226	7.16%	---	---	---	---	---	

Stock Lending Notes

[1] - Multilateral contracts Lending or Borrowing as per Methods 8-1, 8-2 and 8-3-3 (According to ATHEX BoD Resolution No.17)

[2] - Bilateral Contracts Lending or Borrowing as per Methods 8-3-1 and 8-3-2 (According to ATHEX BoD Resolution No.20)

[3] - The information concerning OTC Stock Borrowing Transactions is based on the statements of the Dematerialised Securities System (DSS) operators involved and refers to volumes that have been cleared and registered up until the previous working day.

[4] - Average Price (Volume weighted)

[5] - The Data concerning Open Interest before the start of trading session

Sectors codification for listed companies

533	-	Exploration & Production	537	-	Integrated Oil & Gas
1353	-	Commodity Chemicals	1357	-	Specialty Chemicals
1753	-	Aluminum	1755	-	Nonferrous Metals
1757	-	Steel	1775	-	General Mining
2353	-	Building Materials & Fixtures	2357	-	Heavy Construction
2723	-	Containers & Packaging	2727	-	Diversified Industrials
2733	-	Electrical Components & Equipment	2753	-	Commercial Vehicles & Trucks
2757	-	Industrial Machinery	2773	-	Marine Transportation
2777	-	Transportation Services	2791	-	Business Support Services
2797	-	Industrial Suppliers	3535	-	Distillers & Vintners
3537	-	Soft Drinks	3573	-	Farming Fishing & Plantations
3577	-	Food Products	3722	-	Durable Household Products
3726	-	Furnishings	3728	-	Home Construction
3747	-	Toys	3763	-	Clothing & Accessories
3765	-	Footwear	3767	-	Personal Products
3785	-	Tobacco	4533	-	Health Care Providers
4535	-	Medical Equipment	4577	-	Pharmaceuticals
5337	-	Food Retailers & Wholesalers	5371	-	Apparel Retailers
5373	-	Broadline Retailers	5375	-	Home Improvement Retailers
5379	-	Specialty Retailers	5553	-	Broadcasting & Entertainment
5555	-	Media Agencies	5557	-	Publishing
5751	-	Airlines	5752	-	Gambling
5753	-	Hotels	5755	-	Recreational Services
5757	-	Restaurants & Bars	5759	-	Travel & Tourism
6535	-	Fixed Line Telecommunications	6575	-	Mobile Telecommunications
7535	-	Conventional Electricity	7537	-	Alternative Electricity
7577	-	Water	8355	-	Banks
8534	-	Insurance Brokers	8536	-	Property & Casualty Insurance
8633	-	Real Estate Holding & Development	8637	-	Real Estate Services
8671	-	Industrial & Office REITs	8675	-	Specialty REITs
8775	-	Specialty Finance	8777	-	Investment Services
8985	-	Equity Investment Instruments	9533	-	Computer Services
9535	-	Internet	9537	-	Software
9572	-	Computer Hardware	9574	-	Electronic Office Equipment
9578	-	Telecommunications Equipment	12003	-	ETF

