

# Daily Official List

Hellenic Exchanges – Athens Stock Exchange S.A.

Monday, 2 March, 2015  
Year: 136 Trading Day No: 40



**Disclaimer:**

Hellenic Exchanges-Athens Exchange endeavours to ensure that the data and other material ("Information") presented on the Daily Official List are accurate and complete, but it is not liable for any errors or omissions of data or /and for the accuracy, credibility, updating and completeness of the aforesaid information nor it has any liability arising directly or indirectly from the use of the above Information.

The Company is not liable for the accuracy of the data included in listed companies' announcements. Only the sender of such an announcement is fully and solely liable for any infringement of third party's rights from the content of such announcement. All contents of the Daily Official List are provided only for information purposes and do not constitute investment advice or solicitation to invest in securities or other products listed for trading on the Exchange.

You acknowledge and agree that the Company is the owner of any property rights related to any information appearing on the Daily Official List including intellectual property rights copyright, trademarks, etc.

The above data are a property of the Hellenic Exchanges-Athens Exchange and are copyright protected. Users are forbidden to reproduce, modify, copy, sale, transmit or redistribute, by all reproduction means and methods, part or the whole of the above data, without reference to their source.

The commercial exploitation of these data is, also, forbidden by third parties. Hellenic Exchanges-Athens Exchange does not carry any responsibility, direct or indirect, derived from usage or accidental alteration of the above data when used by third parties.

---

**Hellenic Exchanges – Athens Stock Exchange S.A.**

110 Athinou Ave., 10442 Athens, Tel: (210) 33.66.800, Fax: (210) 32.13.938

[www.athex.gr](http://www.athex.gr)

---

**Thessalonica Stock Exchange Center (T.S.E.C)**

16-18 Katouni Str., Thessalonica 546 25 Tel: (2310) 567.667, Fax: (2310) 530.545

---

**Athex Members Guarantee Fund**

14-16 Fidiou Str., Athens 106 78, Tel: (210) 33.04.682, Fax: (210) 33.04.155

---

**Hellenic Republic Capital Market Commission**

1 Kolokotroni Str. & 1 Stadiou Str., Athens 10562 Tel: (210) 33.77.100 Fax: (210) 33.77.173

---

**Table of Contents**

---

**Section 1: Statistical Figures of Securities, Derivatives and Lending**

Summary of Markets

Athex Indices

Analytic Figures for Athex Market's Boards and Categories

Trading Details by Athex Sectors and Financial Instruments (ETFs)

Top 10 best &amp; worst performing Shares

Derivatives Summary

**Section 2: Analytic Figures of Shares Transactions**

Analytic Figures of Shares Transactions

Shares' Notes

**Section 3: Figures of Securities Transactions**

Securities Blocks Details

Shares Rights Details

Shares Short Selling

Stock Borrowing

Shares Forced Sales

Forced Sales Registered Shares

Exchange Traded Funds (ETFs) Characteristics

**Section 5: Bonds traded in Fixed Income Assets Market**

Corporate Bonds

Government Bonds

Treasury Bills &amp; Zero Coupon Government Bonds

Government Bonds Traded with the Open Outcry Method

State Banks Bonds

**Section 6: Additional Infos**

Athex &amp; ATHEXClear Members List

List of Stocks under Market Making operations

**Section 7: Derivatives Market Analytic Figures**

Index Futures

Stock Futures

Index Options

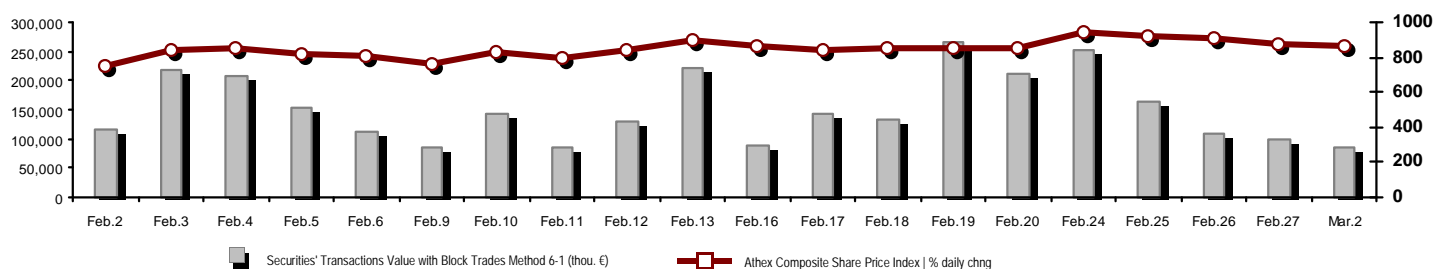
Stock Options

Stock Lending Analytic Figures

**Appendix A: Sectors codification for listed companies**

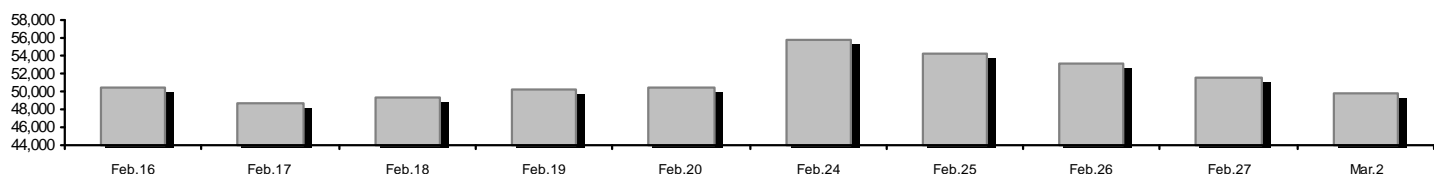
## Summary of Markets

Athex Composite Share Price Index vs Shares and Derivatives Transactions Value

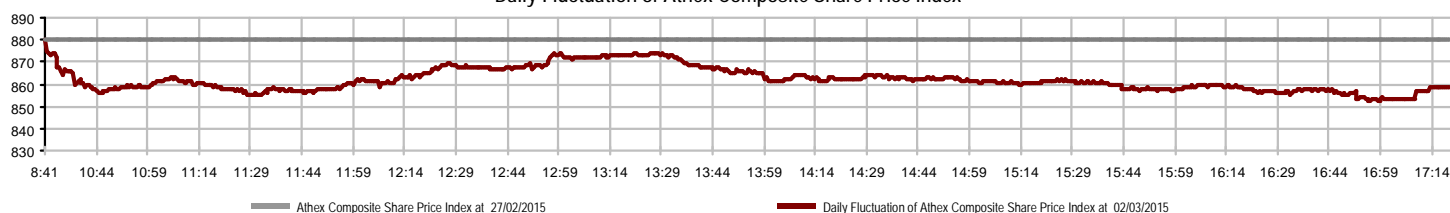


Athex Capitalisation (mill. €) **: 49,793.66	Derivatives Total Open Interest: 386,566
Daily change: mill. €   %: -1,671.63 -3.25%	in Index Futures   % daily chng: 38,834 7.27%
Yearly Avg Capitalisation: mill. €   % chng prev year Avg: 49,848.19 -28.03%	in Stock Futures   % daily chng: 339,925 0.62%
Athex Composite Share Price Index   % daily chng: 858.95 -2.45%	in Index Options   % daily chng: 7,237 3.44%
Athex Composite Share Price Index Capitalisation (mill. €): 44,400.00	in Stock Options   % daily chng: 570 0.00%
Daily change (mill. €): -1,633.63	
Securities' Transactions Value with Block Trades Method 6-1 (thou. €): 84,148.95	Derivatives Contracts Volume: 54,596
Daily change: thou. €   %: -15,513.53 -15.57%	Daily change: pieces   %: -22,642 -29.31%
YtD Avg Trans. Value: thou. €   % chng prev year Avg: 129,229.21 1.71%	YtD Avg Derivatives Contracts   % chng prev year Avg: 74,699 36.28%
Blocks Transactions Value of Method 6-1 (thou. €): 10,503.17	Derivatives Trades Number: 3,836
Blocks Transactions Value of Method 6-2 & 6-3 (thou. €): 0.00	Daily change: number   %: -787 -17.02%
Bonds Transactions Value (thou. €): 0.00	YtD Avg Derivatives Trades number   % chng prev year Avg: 5,210 24.77%
Securities' Transactions Volume (thou. Pieces): 162,704.46	Lending Total Open Interest: 2,795,654
Daily change: thou. pieces   %: -13,584.42 -7.71%	Daily change: pieces   %: -2,208,843 -44.14%
YtD Avg Volume: thou. pieces   % chng prev year Avg: 200,626.21 111.16%	Lending Volume (Multilateral/Bilateral): 13,485
Blocks Transactions Volume of Method 6-1 (thou. Pieces): 47,454.47	Daily change: pieces   %: -51,267 -79.17%
Blocks Transactions Volume of Method 6-2 & 6-3 (thou. Pieces): 0.00	Multilateral Lending: 13,385
Bonds Transactions Volume (thou. pieces): 0.00	Bilateral Lending: 100
Securities' Trades Number: 28,873	Lending Trades Number: 20
Daily change: number   %: -4,481 -13.43%	Daily change: thou. €   %: -5 -20.00%
YtD Avg Derivatives Trades number   % chng prev year Avg: 39,643 37.25%	Multilateral Lending Trades Number: 19
Number of Blocks Method 6-1: 4	Bilateral Lending Trades Number: 1
Number of Blocks Method 6-2 & 6-3: 0	
Number of Bonds Transactions: 0	

Athex Capitalisation (mill. €) \*\*



Daily Fluctuation of Athex Composite Share Price Index



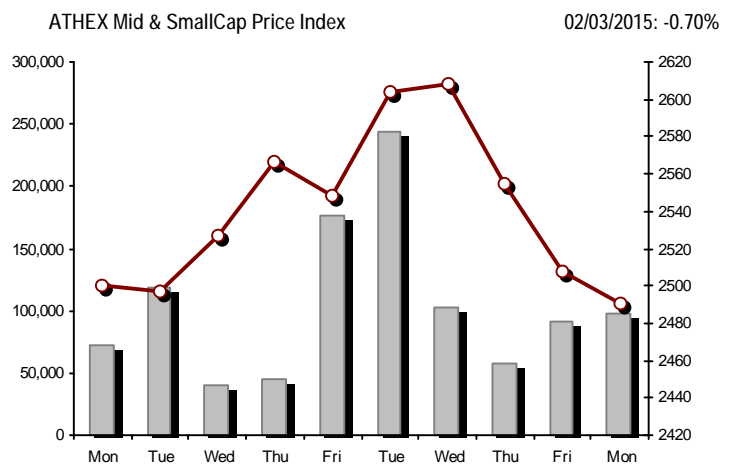
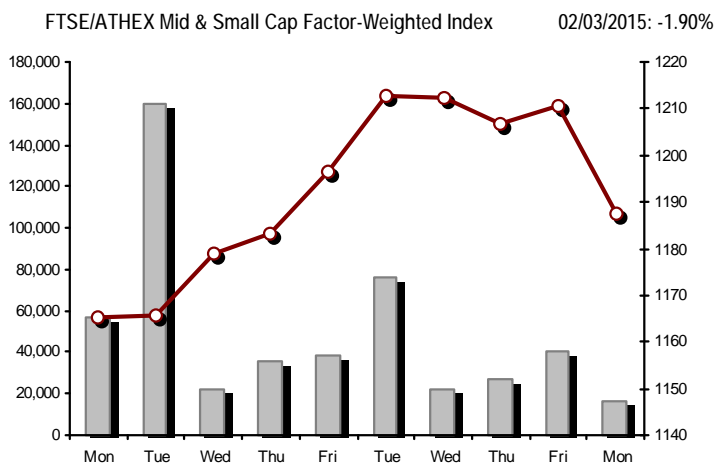
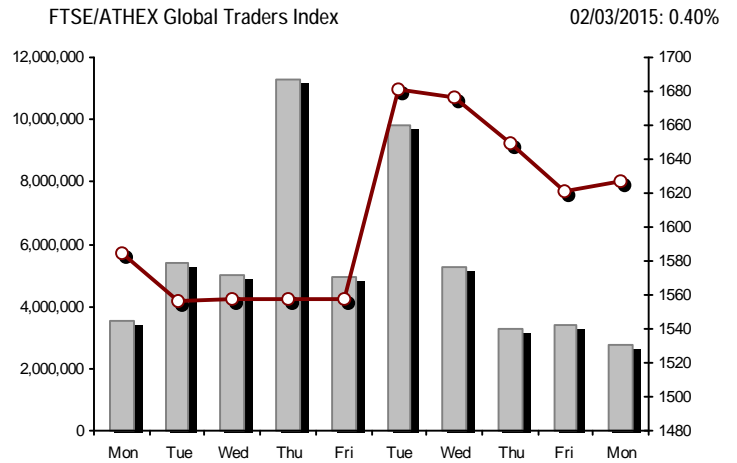
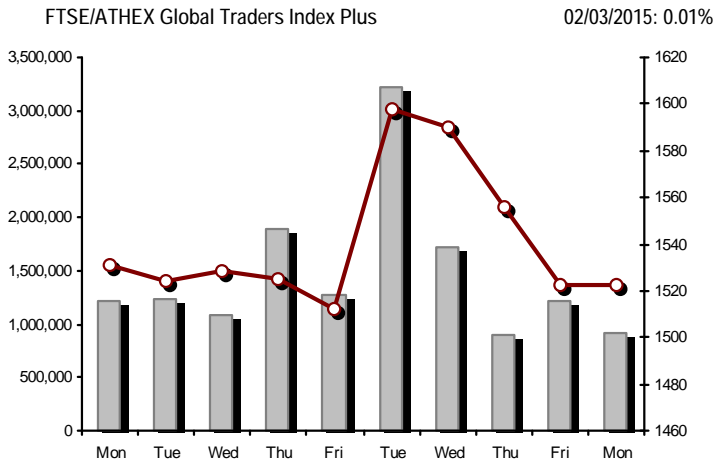
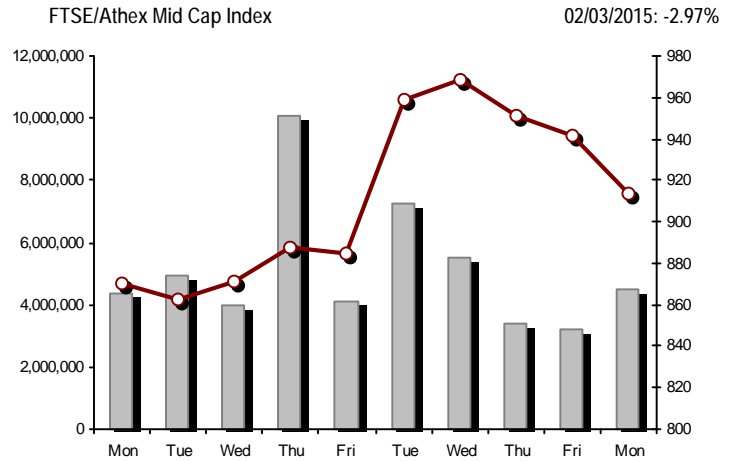
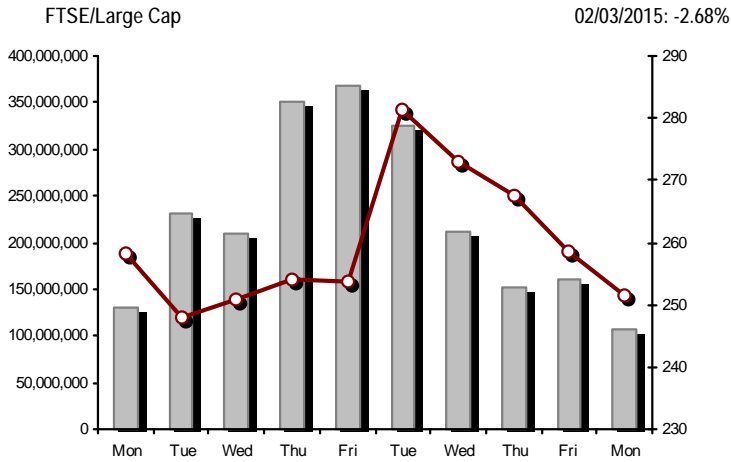
## Athex Indices

Index name	02/03/2015	27/02/2015	pts.	%	Min	Max	Year min	Year max	Year change
Athex Composite Share Price Index	858.95	880.48	-21.53	-2.45%	852.06	880.48	708.61	945.81	3.97% #
FTSE/Athex Large Cap	251.58	258.52	-6.94	-2.68%	249.48	258.52	209.48	283.37	-5.01% €
FTSE/ATHEX Custom Capped	892.65	917.95	-25.30	-2.76%			724.23	956.79	2.45% #
FTSE/ATHEX Custom Capped - USD	717.84	737.99	-20.15	-2.73%			588.87	777.68	-5.04% €
FTSE/Athex Mid Cap Index	913.59	941.53	-27.94	-2.97%	905.89	941.53	717.54	984.77	18.18% #
FTSE/ATHEX-CSE Banking Index	509.18	565.19	-56.01	-9.91%	509.18	565.19	402.80	774.70	-30.06% €
FTSE/ATHEX Global Traders Index Plus	1,522.52	1,522.43	0.09	0.01%	1,504.24	1,527.51	1,227.52	1,604.84	18.68% #
FTSE/ATHEX Global Traders Index	1,627.63	1,621.19	6.44	0.40%	1,594.90	1,632.56	1,344.70	1,698.65	13.15% #
FTSE/ATHEX Mid & Small Cap Factor-Weighted Ind	1,187.54	1,210.56	-23.02	-1.90%	1,180.91	1,216.89	1,076.89	1,223.09	8.34% #
Greece & Turkey 30 Price Index	648.42	655.42	-7.00	-1.07%	646.52	659.96	631.70	768.95	-4.63% €
ATHEX Mid & SmallCap Price Index	2,490.57	2,508.01	-17.44	-0.70%	2,472.57	2,536.87	2,372.76	2,635.74	2.09% #
FTSE/Athex Market Index	610.08	626.86	-16.78	-2.68%	605.09	626.86	507.68	685.04	-4.10% €
FTSE Med Index	5,313.96	5,386.51	-72.55	-1.35%			4,930.94	5,386.51	5.50% #
Athex Composite Index Total Return Index	1,257.87	1,289.41	-31.54	-2.45%	1,247.79	1,289.41	1,037.71	1,385.07	4.15% #
FTSE/Athex Large Cap Total Return	342.18	351.62	-9.44	-2.68%			285.87	382.72	-4.77% €
FTSE/ATHEX Large Cap Net Total Return	1,018.91	1,046.99	-28.08	-2.68%	1,010.39	1,046.99	848.38	1,147.63	-4.78% €
FTSE/ATHEX Custom Capped Total Return	940.97	967.64	-26.67	-2.76%			763.44	1,008.59	2.63% #
FTSE/ATHEX Custom Capped - USD Total Return	756.70	777.94	-21.24	-2.73%			620.75	819.78	-4.87% €
FTSE/Athex Mid Cap Total Return	1,161.66	1,197.19	-35.53	-2.97%			928.33	1,231.75	18.18% #
FTSE/ATHEX-CSE Banking Total Return Index	474.82	527.05	-52.23	-9.91%			380.70	708.30	-30.09% €
Greece & Turkey 30 Total Return Index	793.86	821.26	-27.40	-3.34%			770.92	919.96	-3.55% €
Hellenic Mid & Small Cap Index	916.75	938.69	-21.94	-2.34%	909.78	938.69	716.61	994.59	19.18% #
FTSE/Athex Banks	672.75	746.75	-74.00	-9.91%	672.75	746.75	532.20	1,023.60	-30.05% €
FTSE/Athex Insurance	1,422.45	1,443.52	-21.07	-1.46%	1,390.84	1,443.52	1,369.77	1,538.35	-2.88% €
FTSE/Athex Financial Services	1,243.15	1,268.47	-25.32	-2.00%	1,224.64	1,271.72	926.91	1,400.60	24.12% #
FTSE/Athex Industrial Goods & Services	2,411.08	2,455.48	-44.40	-1.81%	2,398.98	2,460.15	1,881.51	2,660.41	23.39% #
FTSE/Athex Retail	4,115.55	4,075.73	39.82	0.98%	4,047.14	4,175.52	3,336.67	4,531.02	8.24% #
FTSE/ATHEX Real Estate	2,597.32	2,725.90	-128.58	-4.72%	2,539.91	2,725.90	2,181.63	2,800.26	13.82% #
FTSE/Athex Personal & Household Goods	5,239.85	5,377.18	-137.33	-2.55%	5,151.57	5,412.70	3,847.16	5,680.33	15.10% #
FTSE/Athex Food & Beverage	5,963.90	6,027.38	-63.48	-1.05%	5,897.27	6,030.84	5,066.70	6,066.14	1.81% #
FTSE/Athex Basic Resources	2,572.32	2,611.88	-39.56	-1.51%	2,536.20	2,611.88	1,753.11	2,916.96	33.40% #
FTSE/Athex Construction & Materials	2,619.59	2,559.06	60.53	2.37%	2,507.77	2,641.64	2,059.46	2,705.46	19.89% #
FTSE/Athex Oil & Gas	2,144.50	2,197.19	-52.69	-2.40%	2,102.96	2,197.19	1,618.74	2,208.30	18.16% #
FTSE/Athex Chemicals	6,840.06	6,880.29	-40.23	-0.58%	6,696.44	6,917.13	4,784.62	7,336.99	33.53% #
FTSE/Athex Media	1,920.67	1,795.09	125.58	7.00%	1,795.09	1,920.67	1,359.24	2,061.03	-6.81% €
FTSE/Athex Travel & Leisure	1,562.64	1,504.13	58.51	3.89%	1,475.74	1,562.64	1,238.26	1,741.96	1.92% #
FTSE/Athex Technology	725.86	729.50	-3.64	-0.50%	718.19	736.24	659.36	786.22	-0.03% €
FTSE/Athex Telecommunications	2,518.60	2,449.79	68.81	2.81%	2,394.74	2,518.60	1,995.61	2,606.68	0.55% #
FTSE/Athex Utilities	2,519.12	2,651.64	-132.52	-5.00%	2,490.42	2,651.64	1,711.47	2,830.02	20.04% #
FTSE/Athex Health Care	132.44	139.58	-7.14	-5.12%	131.65	141.96	115.79	163.37	-8.24% €
Athex All Share Index	175.00	180.92	-5.92	-3.27%			146.74	196.00	-5.88% €
Hellenic Corporate Bond Index	93.27	93.69	-0.42	-0.45%			87.18	94.45	-0.64% €
Hellenic Corporate Bond Price Index	91.06	91.49	-0.43	-0.47%			85.19	92.77	-1.57% €

Note 1: Greece & Turkey 30 Pr data is the indicative at 17:20, whereas FTSE/ATHEX Custom Capped, FTSE/ATHEX Custom Capped - USD, FTSE/ATHEX Custom Capped TR, FTSE/ATHEX Custom Capped - USD TR, FTSE/Med 100 & Greece & Turkey 30 Rt., Hellenic Corporate Bond Price Index, Hellenic Corporate Bond Index closing prices refer to the previous trading day of 26/02/2015.

Note 2: The Hellenic Mid & Small Cap Index is a Customized index calculated by the Athens Exchange.

Athex Indices



Indices volume of transactions Indices closing prices

## Analytic Figures for Athex Market's Boards and Categories

	Total Traded Securities	Main Market	Low Dispersion	Other Categories (*)	Exchange Traded Funds (ETFs)	Warrants
Totals	142	109	6	21	3	3
Gain / Lose / Same:	41 / 87 / 14	34 / 69 / 6	2 / 4 / 0	5 / 8 / 8	0 / 3 / 0	0 / 3 / 0
Athex Capitalisation (mill. €) **	49,793.66	47,865.52	1,605.16	322.98		
Daily Average Trans/ons Value(thou.€)	129,229.21	126,086.22	79.12	31.17	51.53	3,238.31
Transactions Value	84,148.95	82,914.90	35.55	25.31	3.94	1,169.26
Main Board:	73,645.78	72,411.73	35.55	25.31	3.94	1,169.26
Blocks Board:	10,503.17	10,503.17	0.00	0.00	0.00	0.00
Forced Sales Board:	0.00	0.00	0.00	0.00	0.00	0.00
Special Terms Board:	0.00	0.00	0.00	0.00	0.00	0.00
Daily Average Transactions Volume	200,626,213	191,445,602	114,324	139,445	18,020	9,238,742
Transactions Volume	162,704,456	158,412,701	4,534	93,382	1,538	4,192,301
Main Board:	115,249,987	110,958,232	4,534	93,382	1,538	4,192,301
Blocks Board:	47,454,469	47,454,469	0	0	0	0
Forced Sales Board:	0	0	0	0	0	0
Special Terms Board:	0	0	0	0	0	0
Daily Average Number of Trades	39,643	37,521	37	78	8	2,001
Number of Trades	28,873	27,272	34	90	4	1,473
Main Board:	28,869	27,268	34	90	4	1,473
Blocks Board:	4	4	0	0	0	0
Forced Sales Board:	0	0	0	0	0	0
Special Terms Board:	0	0	0	0	0	0

(\*) Summarised Transactions figures for Under Deletion and Under Supervision Categories. (\*\*) The Market Capitalization of the Companies that belong in the Under Supervision Status is not included.

## Trading Details by Athex Sectors and Financial Instruments (ETFs)

Code	Sectors	Gain / Lose / Same	Number of Trades	Transactions Volume	Transactions Value	% of Total Trans. Value
8300	- Banks	0 / 10 / 0	16,773	156,887,324	52,300,541.23	62.15%
1700	- Basic Resources	2 / 7 / 0	938	373,837	1,815,571.76	2.16%
1300	- Chemicals	3 / 2 / 0	78	51,647	69,384.23	0.08%
2300	- Construction & Materials	7 / 9 / 2	1,394	675,458	2,781,246.65	3.31%
12000	- Financial Instruments	0 / 3 / 0	4	1,538	3,937.58	0.00%
8700	- Financial Services	1 / 3 / 0	851	901,652	1,023,408.54	1.22%
3500	- Food & Beverage	2 / 6 / 4	244	111,287	1,579,752.62	1.88%
4500	- Health Care	2 / 3 / 1	153	194,036	42,509.96	0.05%
2700	- Industrial Goods & Services	5 / 9 / 2	897	261,364	1,044,409.09	1.24%
8500	- Insurance	0 / 1 / 0	8	1,757	2,327.37	0.00%
5500	- Media	2 / 2 / 0	13	244	44.70	0.00%
500	- Oil & Gas	1 / 2 / 0	860	215,534	1,286,384.31	1.53%
3700	- Personal & Household Goods	3 / 10 / 1	617	266,704	1,739,429.00	2.07%
8600	- Real Estate	2 / 4 / 0	421	384,533	1,598,397.82	1.90%
5300	- Retail	2 / 2 / 1	350	56,972	1,191,497.84	1.42%
9500	- Technology	4 / 4 / 2	125	61,699	53,665.33	0.06%
6500	- Telecommunications	1 / 0 / 0	1,857	954,351	8,533,809.03	10.14%
5700	- Travel & Leisure	4 / 6 / 0	1,716	708,713	5,536,792.35	6.58%
7500	- Utilities	0 / 4 / 1	1,574	595,806	3,545,843.08	4.21%

## Top 10 best &amp; worst performing Shares

## Main Market

With positive Price change			With negative Price change		
	Closing price	change		Closing price	change
KLEEMAN HELLAS SA (CR)	1.67	7.05% #	LAMDA DEVELOPMENT SA (CR)	3.75	-12.18% €
OPAP (CR)	8.65	5.10% #	PIRAEUS BANK (CR)	0.501	-11.80% €
TITAN CEMENT (CR)	23.50	4.03% #	NATIONAL BANK (CR)	1.19	-11.19% €
OTE (CR)	9.15	2.81% #	ALPHA BANK (CR)	0.333	-10.00% €
GEK TERNA (CR)	2.27	1.34% #	MARFIN INVESTMENT GROUP (CR)	0.181	-8.59% €
GR. SARANTIS SA (CR)	7.20	1.27% #	CORINTH PIPEWORKS SA (CR)	1.05	-7.08% €
FRIGOGLASS SA (CR)	1.85	1.09% #	PPC (CR)	6.51	-7.00% €
FOLLI FOLLIE (CR)	28.59	1.03% #	SIDENOR (CR)	0.725	-5.84% €
TRASTOR REAL EST. INV. CO.(CR)	1.16	0.87% #	EUROBANK ERGASIAS (CR)	0.129	-5.84% €
INTRALOT (CR)	1.80	0.56% #	THESSALONIKA WATER & SEWERAGE	2.94	-5.47% €
With the highest Transactions Value			With the highest Transactions Volume		
	Value (thou. €)	change		Volume	change
NATIONAL BANK (CR)	17,070.37	-11.19% €	BANK OF CYPRUS (CR)	47,096,708	-2.00% €
PIRAEUS BANK (CR)	11,208.66	-11.80% €	EUROBANK ERGASIAS (CR)	45,408,847	-5.84% €
BANK OF CYPRUS (CR)	9,280.04	-2.00% €	PIRAEUS BANK (CR)	21,532,326	-11.80% €
OTE (CR)	8,533.81	2.81% #	ALPHA BANK (CR)	21,246,976	-10.00% €
ALPHA BANK (CR)	7,320.45	-10.00% €	NATIONAL BANK (CR)	13,866,737	-11.19% €
EUROBANK ERGASIAS (CR)	5,885.48	-5.84% €	ATTICA BANK S.A. (CR)	3,533,208	-1.35% €
OPAP (CR)	5,006.57	5.10% #	OTE (CR)	954,351	2.81% #
PPC (CR)	3,006.53	-7.00% €	MARFIN INVESTMENT GROUP (CR)	752,930	-8.59% €
MYTILINEOS HOLDINGS (CR)	1,741.06	-0.96% €	OPAP (CR)	596,206	5.10% #
CC HBC AG (CR)	1,568.62	-1.05% €	PPC (CR)	456,010	-7.00% €

Note: Stocks that are not included in the "Low Dispersion" and "Under Supervision" categories, and the transactions value is more than 10,000 €.



## Derivatives Summary

	Number of Trades	Volume	Open Interest
<b>Index Futures</b>	<b>910</b>	<b>7,815</b>	<b>38,834</b>
FTSE/Athex Large Cap	910	7,815	38,834
<b>Stock Futures</b>	<b>2,906</b>	<b>46,120</b>	<b>339,925</b>
ALPHA BANK (CR)	257	7,366	41,577
CC HBC AG (CR)	6	13	214
CORINTH PIPEWORKS SA (CR)	7	26	472
ELLAKTOR (CR)	35	136	1,464
EUROBANK ERGASIAS (CR)	252	10,115	118,619
EYDAP S.A. (CR)	4	6	139
FOLLI FOLLIE (CR)	12	31	173
FRIGOGLASS SA (CR)	5	15	348
GEK TERNA (CR)	32	95	7,660
GRIVALIA PROPERTIES (CR)	12	19	160
HELLENIC EXCHANGES-A.S.E. (CR)	38	95	1,295
HELLENIC PETROLEUM (CR)	21	76	4,441
INTRALOT (CR)	4	13	394
JUMBO SA (CR)	34	80	599
MARFIN INVESTMENT GROUP (CR)	31	1,257	27,339
METKA (CR)	30	87	508
MOTOR OIL (CR)	26	73	407
MYTILINEOS HOLDINGS (CR)	56	217	3,143
NATIONAL BANK (CR)	771	13,792	31,353
OPAP (CR)	139	462	2,042
OTE (CR)	286	1,277	7,627
P.P.A. S.A. (CR)	13	41	168
PIRAEUS BANK (CR)	497	9,674	83,671
PPC (CR)	216	832	2,985
SIDENOR (CR)	12	70	635
TERNA ENERGY (CR)	10	32	1,561
TITAN CEMENT (CR)	77	179	590
VIOHALCO SA/NV (CB)	23	41	341
<b>Index Options</b>	<b>20</b>	<b>661</b>	<b>7,237</b>
FTSE/Athex Large Cap	20	661	7,237
<b>Stock Options</b>	<b>0</b>	<b>0</b>	<b>570</b>
ALPHA BANK (CR)	0	0	40
NATIONAL BANK (CR)	0	0	350
OPAP (CR)	0	0	0
OTE (CR)	0	0	75
PIRAEUS BANK (CR)	0	0	80
PPC (CR)	0	0	25
<b>Total Derivatives Traded</b>	<b>3,836</b>	<b>54,596</b>	<b>386,566</b>

## Daily Official List

Year: 136 Trading Day No: 40

## Section 2: Analytic Figures of Shares Transactions

Monday, 2 March, 2015

Number of Outstanding Securities	Nominal Value	Dividends [1] 2012 2013 2014	Date of Last Dividend [2]	Coupon Right	Note	Shares	Closing price	% change	Previous closing price/date	Open price	Price min	Price max	Last price	Avg price	Last Bid [7]	Last Ask [7]	P/E after	Year	Volume	Trades	Transactions Value[8]	Company Mkt Value (thou. €)	Year low	Year high	Sector[4]		
<b>Warrants</b>																											
1,141,747,967		---	---	---	11/06/2013	---	ALPHA BANK (W)	0.530	-11.67	€ 0.600	27/02/2015	0.562	0.530	0.589	0.530	---	---	1.22	2013	1,217,081	532	662,424.39	4,252,096.93	0.290	0.979	8355	
245,748,459		---	---	---	27/06/2013	---	NATIONAL BANK (W)	0.195	-16.67	€ 0.234	27/02/2015	0.210	0.195	0.234	0.195	---	---	0.43	2013	962,748	358	202,936.84	4,204,448.06	0.100	0.320	8355	
843,637,022		---	---	---	03/07/2013	---	PIRAEUS BANK (W)	0.146	-13.10	€ 0.168	27/02/2015	0.164	0.146	0.164	0.146	---	---	0.16	2013	2,012,472	583	303,900.22	3,057,091.84	0.083	0.252	8355	
<b>Main Market</b>																											
71,417,100	0.650	---	---	---	26/05/2010	27/06/2014	---	AEGEAN AIRLINES (CR)	7.40	-1.33	€ 7.50	27/02/2015	7.50	7.34	7.50	7.40	---	---	7.97	2013	51,877	286	385,013.64	528,486.54	6.40	8.08	5751
11,178,000	1.12	---	---	---	21/04/2010	15/12/2014	---	AEOLIAN INVESTMENT FUND (CR)	0.671	-0.59	€ 0.675	27/02/2015	0.675	0.670	0.680	0.680	---	---	9.21	2013	6,415	11	4,315.63	7,500.44	0.595	0.769	8985
13,000,000	1.00	---	---	---	01/08/2007	07/04/2000	---	AKRITAS SA (CR)	0.095	5.56	# 0.090	27/02/2015	0.095	0.095	0.095	0.095	---	---	---	2013	70	4	6.65	1,235.00	0.066	0.125	2353
12,769,059,858	0.300	---	---	---	07/04/2008	13/05/2013	---	ALPHA BANK (CR)	0.333	-10.00	€ 0.370	27/02/2015	0.360	0.333	0.360	0.333	---	---	0.77	2013	21,246,976	3,244	7,320,445.33	4,252,096.93	0.259	0.510	8355
22,016,250	0.370	---	---	---	15/07/2009	11/05/2000	---	ALUMIL (CR)	0.307	2.33	# 0.300	27/02/2015	0.311	0.307	0.311	0.307	---	---	---	2013	300	2	92.50	6,758.99	0.218	0.327	1753
417,608	16.00	---	0.8	---	29/04/2014	05/03/2013	---	ANDROMEDA SA (CR)	19.17	9.98	# 17.43	27/02/2015	19.17	19.17	19.17	19.17	---	---	---	2014	2	1	38.34	8,005.55	17.23	20.00	8985
26,252,040	0.380	---	---	---	08/07/2010	10/02/2014	---	AS COMPANY SA (CR)	0.302	-9.31	€ 0.333	27/02/2015	0.315	0.302	0.326	0.302	---	---	18.14	2013	10,806	12	3,430.40	7,928.12	0.263	0.344	5379
86,735,980	0.310	---	---	---	06/07/2009	02/01/2002	---	ATHENS MEDICAL CENTER SA (CR)	0.800	---	~ 0.800	27/02/2015	0.800	0.790	0.800	0.800	---	---	---	2013	2,249	4	1,796.20	69,388.78	0.716	0.869	4533
1,045,794,145	0.300	---	---	---	04/06/2008	07/08/2014	---	ATTICA BANK S.A. (CR)	0.073	-1.35	€ 0.074	27/02/2015	0.069	0.067	0.074	0.073	---	---	---	2013	3,533,208	302	250,952.14	76,342.97	0.040	0.084	8355
15,300,000	0.300	---	---	---	30/07/2009	13/12/1999	---	ATTICA PUBLICATIONS SA (CR)	1.60	---	~ 1.60	27/02/2015	---	---	---	---	---	---	46.17	2013	---	---	---	24,480.00	1.29	1.60	5557
45,457,464	0.700	---	---	---	01/07/2008	01/03/2010	---	AUDIO VISUAL ENTERPRISES (CR)	0.260	7.00	# 0.243	27/02/2015	0.260	0.260	0.260	0.260	---	---	---	2013	50	1	13.00	11,818.94	0.184	0.277	5553
12,120,000	0.320	---	---	---	30/04/2012	22/11/2013	---	AUTOHELLAS SA (CR)	9.31	-4.02	€ 9.70	27/02/2015	9.70	9.31	9.70	9.31	---	---	37.98	2013	4,823	12	46,714.40	112,837.20	8.30	9.95	5759
8,922,944,533	0.100	---	---	---	31/05/2011	02/02/2015	4857	BANK OF CYPRUS (CR)	0.196	-2.00	€ 0.200	27/02/2015	0.202	0.195	0.203	0.196	---	---	---	2013	47,096,708	89	9,280,041.23	1,748,897.13	0.165	0.219	8355
19,864,886	5.60	0.5376	0.672	---	05/03/2014	02/07/2008	---	BANK OF GREECE (CR)	11.37	-1.13	€ 11.50	27/02/2015	11.16	11.00	11.46	11.37	---	---	---	---	10,221	84	115,332.76	225,863.75	8.88	12.17	8355
23,986,500	1.05	---	---	---	26/06/2009	15/03/2000	---	BIOKARPET S.A.(CR)	0.200	-0.99	€ 0.202	27/02/2015	0.200	0.200	0.200	0.200	---	---	---	2013	6,150	4	1,230.00	4,797.30	0.170	0.215	3726
15,842,391	1.51	---	---	---	15/07/2009	12/05/2000	---	BITROS HOLDING SA (CR)	0.383	---	~ 0.383	27/02/2015	---	---	---	---	---	---	---	2013	---	---	---	6,067.64	0.144	0.383	1757
15,816,009	0.300	---	---	---	01/07/2009	17/07/2000	---	BYTE COMPUTER SA (CR)	0.380	-2.81	€ 0.391	27/02/2015	0.380	0.380	0.380	0.380	---	---	---	2013	150	2	57.00	6,010.08	0.346	0.445	9533
367,819,247	6.70	0.34	0.354	---	09/07/2014	29/04/2013	---	CC HBC AG (CR)	15.97	-1.05	€ 16.14	27/02/2015	15.91	15.79	16.15	15.97	---	---	---	2013	98,103	177	1,568,615.31	5,874,073.37	13.55	16.25	3537
101,123,806	0.360	---	---	---	22/07/2010	28/06/2011	---	CENTRIC HOLDINGS (CR)	0.179	---	~ 0.179	27/02/2015	---	---	---	---	---	---	8.77	2013	---	---	---	18,101.16	0.140	0.215	5752
4,034,950	0.680	---	---	---	01/07/2005	30/12/2010	---	CHATZIKRANIOTIS & SONS SA (CR)	0.200	---	~ 0.200	27/02/2015	---	---	---	---	---	---	---	2013	---	---	---	806.99	0.125	0.200	3577
124,170,201	0.780	---	---	---	28/06/2002	07/02/2005	---	CORINTH PIPEWORKS SA (CR)	1.05	-7.08	€ 1.13	27/02/2015	1.05	1.04	1.10	1.05	---	---	---	2013	26,310	101	28,091.92	130,378.71	0.756	1.31	1757
9,907,500	0.300	---	---	---	06/10/2005	13/02/2002	---	CPI SA (CR)	0.171	---	~ 0.171	27/02/2015	---	---	---	---	---	---	14.76	2014	---	---	---	1,694.18	0.171	0.234	9572
27,379,200	0.520	---	0.1	---	24/07/2014	18/09/2013	---	CRETE PLASTICS SA (CR)	5.38	0.37	# 5.36	27/02/2015	5.23	5.23	5.38	5.38	---	---	16.16	2013	400	4	2,117.84	147,300.10	4.60	5.64	1357
15,000,000	0.300	---	---	---	06/07/2007	18/07/2000	---	DAIOS PLASTICS SA (CR)	2.52	0.80	# 2.50	27/02/2015	2.26	2.26	2.52	2.52	---	---	---	2013	100	2	239.00	37,800.00	2.25	2.52	1357
34,720,000	0.310	---	---	---	16/06/2010	01/08/2007	---	DROMEAS SA (CR)	0.148	---	~ 0.148	27/02/2015	0.148	0.136	0.148	0.148	---	---	---	2013	1,043	5	141.88	5,138.56	0.113	0.162	3726
3,873,120	0.300	---	---	---	07/07/2008	04/10/2012	---	DRUCKFARBEN HELLAS (CR)	0.729	---	~ 0.729	27/02/2015	---	---	---	---	---	---	---	2013	---	---	---	2,823.50	0.729	0.900	1357
11,250,000	0.560	---	---	---	26/07/2010	16/06/1999	---	EKTER SA (CR)	0.450	---	~ 0.450	27/02/2015	---	---	---	---	---	---	---	2013	---	---	---	5,062.50	0.387	0.490	2357
32,188,050	1.04	---	---	---	21/07/2008	20/01/2000	---	EL. D. MOUZAKIS SA (CB)	0.290	---	~ 0.290	27/02/2015	---	---	---	---	---	---	---	2013	---	---	---	9,334.53	0.240	0.290	3763
18,435,000	1.00	---	---	---	07/07/2009	10/09/2010	---	ELASTRON (CR)	0.615	---	~ 0.615	27/02/2015	---	---	---	---	---	---	---	2013	---	---	---	11,337.53	0.476	0.697	1757
31,734,530	1.60	---	---	---	09/07/2007	19/07/2006	---	ELGEKA SA (CR)	0.280	---	~ 0.280	27/02/2015	---	---	---	---	---	---	---	2013	---	---	---	8,885.67	0.155	0.283	3577
23,828,130	0.500	---	---	---	07/07/2010	17/02/2009	---	ELINOIL S.A. (CR)	0.917	9.95	# 0.834	27/02/2015	0.780	0.780	0.917	0.917	---	---	---	2013	100	2	79.51	21,850.40	0.780	0.968	537
177,001,313	1.03	---	---	---	05/07/2011	20/12/2007	---	ELLAKTOR (CR)	2.42	-1.63	€ 2.46	27/02/2015	2.36	2.33	2.53	2.42	---	---	---	2013	248,009	461	604,542.18	428,343.18	1.67	2.62	2357
82,667,000	0.300	---	---	---	22/07/2014	---	---	ELTECH ANEMOS S.A. (CR)	0.711	-2.07	€ 0.726	27/02/2015	0.700	0.700	0.746	0.707	---	---	---	---	26,310	39	18,831.42	58,776.24	0.598	0.845	7537



## Section 2: Analytic Figures of Shares Transactions

Monday, 2 March, 2015

Number of Outstanding Securities	Nominal Value	Dividends [1]			Date of Last Coupon		Note	Shares	Closing price	% change	Previous closing price/date	Open price	Price min	Price max	Last price	Avg price	Last Bid [7]	Last Ask [7]	P/E after	Year	Volume	Trades	Transactions Value[8]	Company Mkt Value (thou. €)	Year low	Year high	Sector[ 4]
		2012	2013	2014	Dividend [2]	Right																					
23,154,250	1.36	---	---	---	12/08/2008	02/08/2010	---	INTRACOM CONSTR. (CR)	0.510	-0.20	€ 0.511	27/02/2015	0.507	0.507	0.510	0.510	---	---	---	2013	3,000	2	1,527.06	11,808.67	0.415	0.610	2357
133,025,996	1.41	---	---	---	03/07/2007	07/01/2002	---	INTRACOM HOLDINGS (CR)	0.443	---	↘ 0.443	27/02/2015	0.430	0.430	0.451	0.443	---	---	---	2013	15,637	42	6,807.92	58,930.52	0.345	0.511	9578
158,961,721	0.300	0.0026	---	---	30/05/2013	14/11/2007	---	INTRALOT (CR)	1.80	0.56	# 1.79	27/02/2015	1.75	1.75	1.80	1.80	---	---	---	2013	51,394	116	91,218.91	286,131.10	1.05	1.80	5752
77,654,850	0.580	---	---	---	01/07/2011	21/02/2003	---	J & P - AVAX SA (CR)	0.546	-5.86	€ 0.580	27/02/2015	0.609	0.542	0.609	0.546	---	---	---	2013	12,770	65	7,385.51	42,399.55	0.485	0.660	2357
136,059,759	1.19	---	0.18	0.18	23/12/2014	05/03/2014	---	JUMBO SA (CR)	9.90	-2.94	€ 10.20	27/02/2015	10.00	9.71	10.29	9.90	---	---	18.42	2014	135,374	401	1,356,415.92	1,346,991.61	7.06	10.98	3747
9,742,920	0.400	0.01	0.01	---	08/08/2014	14/07/2000	---	KARAMOLEGOS SA (CR)	1.68	---	↘ 1.68	27/02/2015	---	---	---	---	---	---	---	2013	---	---	---	16,368.11	1.62	1.68	3577
14,679,792	1.68	---	---	---	24/06/2014	04/09/2000	---	KARATZIS SA (CR)	3.65	1.39	# 3.60	27/02/2015	3.40	3.40	3.65	3.65	---	---	10.96	2013	67	5	229.55	53,581.24	2.89	3.65	2723
13,202,756	0.350	---	---	---	01/07/2004	05/08/2014	---	KEKROPS SA (CR)	0.340	-6.34	€ 0.363	27/02/2015	0.340	0.340	0.340	0.340	---	---	---	2013	2,150	5	731.00	4,488.94	0.247	0.424	8633
7,595,160	0.600	---	---	---	08/08/2008	18/08/2010	---	KIRIAKOULIS SHIPPING SA (CR)	0.527	---	↘ 0.527	27/02/2015	---	---	---	---	---	---	34.21	2013	---	---	---	4,002.65	0.416	0.638	5759
23,648,700	0.350	---	---	---	13/07/2011	29/07/2014	---	KLEEMAN HELLAS SA (CR)	1.67	7.05	# 1.56	27/02/2015	1.56	1.53	1.67	1.67	---	---	59.03	2013	42,804	114	68,429.28	39,493.33	1.22	1.78	2757
40,219,218	0.300	---	---	---	25/05/2009	09/07/2013	---	KLOUKINAS - LAPPAS SA (CR)	0.388	-3.00	€ 0.400	27/02/2015	0.400	0.386	0.400	0.388	---	---	---	2013	529	12	208.47	15,605.06	0.380	0.470	2357
21,224,340	0.420	---	---	---	02/07/2008	25/04/2006	---	KORDELLOS BROS SA (CR)	0.247	---	↘ 0.247	27/02/2015	---	---	---	---	---	---	---	2013	---	---	---	5,242.41	0.180	0.250	1757
13,586,500	0.390	---	---	---	25/06/2010	28/05/2008	---	KORRES (CR)	3.34	-1.48	€ 3.39	27/02/2015	3.34	3.34	3.34	3.34	---	---	---	2013	2,407	2	8,039.38	45,378.91	3.15	3.80	3767
29,480,000	0.420	---	---	---	19/07/2010	01/08/2007	---	KRETA FARM SA (CR)	0.450	-1.96	€ 0.459	27/02/2015	0.450	0.450	0.450	0.450	---	---	---	2013	350	7	157.50	13,266.00	0.355	0.520	3577
33,065,136	0.380	---	---	---	06/07/2009	16/09/2013	---	KRI-KRI S.A. (CR)	1.80	-0.55	€ 1.81	27/02/2015	1.81	1.80	1.83	1.80	---	---	11.61	2013	1,672	7	3,016.62	59,517.24	1.60	1.86	3577
15,804,800	0.330	---	---	---	15/06/2010	12/03/2004	---	KTIMA KOSTAS LAZARIDIS SA (CR)	0.276	-9.80	€ 0.306	27/02/2015	0.276	0.276	0.276	0.276	---	---	---	2013	950	2	262.20	4,362.12	0.276	0.396	3535
23,719,554	0.980	---	---	---	19/08/2008	15/09/2014	---	KYRIAKIDIS MARBLES SA (CR)	2.16	-0.46	€ 2.17	27/02/2015	2.13	2.13	2.16	2.16	---	---	5.08	2013	2,557	7	5,446.47	51,234.24	1.61	2.19	2353
79,721,775	0.300	---	---	---	30/05/2007	23/06/2014	---	LAMDA DEVELOPMENT SA (CR)	3.75	-12.18	€ 4.27	27/02/2015	4.16	3.68	4.16	3.75	---	---	---	2013	340,114	237	1,421,390.27	298,956.66	2.46	4.63	8633
21,364,000	1.12	---	---	---	05/07/2010	10/08/2005	---	LAMPSPA HOTEL SA (CR)	17.99	0.56	# 17.89	27/02/2015	17.90	17.90	17.99	17.99	---	---	-(6)-	2013	80	3	1,432.90	384,338.36	16.10	18.00	5753
5,939,268	0.620	---	---	---	10/07/2003	03/01/2002	---	LANAKAM SA (CR)	0.990	---	↘ 0.990	27/02/2015	---	---	---	---	---	---	---	2013	---	---	---	5,879.88	0.990	1.16	3763
7,734,375	1.00	---	---	---	09/07/2007	07/01/2011	---	LIVANIS SA (CR)	0.188	---	↘ 0.188	27/02/2015	---	---	---	---	---	---	---	2013	---	---	---	1,454.06	0.117	0.210	5557
4,740,000	0.860	---	---	---	14/03/2003	---	---	LOGISMOS S.A. (CR)	0.330	---	↘ 0.330	27/02/2015	---	---	---	---	---	---	44.44	2013	---	---	---	1,564.20	0.265	0.515	9533
17,125,062	0.940	---	---	---	01/06/2010	02/02/2015	---	LOULIS MILLS SA (CR)	1.94	---	↘ 1.94	27/02/2015	1.94	1.94	1.94	1.94	---	---	---	2013	3,000	2	5,820.00	33,222.62	1.64	2.35	3577
937,122,261	0.300	---	---	---	26/04/2007	29/08/2014	---	MARFIN INVESTMENT GROUP (CR)	0.181	-8.59	€ 0.198	27/02/2015	0.195	0.181	0.195	0.181	---	---	---	2013	752,930	429	141,366.60	169,619.13	0.150	0.232	8775
9,819,370	0.690	---	---	---	14/08/2007	09/01/2004	---	MATHIOS REFRACTORY SA (CR)	0.336	---	↘ 0.336	27/02/2015	---	---	---	---	---	---	---	2013	---	---	---	3,299.31	0.199	0.360	2353
468,700	0.47	0.65	0.15	0.15	04/12/2014	21/05/2004	---	MERMEREN KOMB. A.D. PR. (GDR)	7.10	-0.98	€ 7.17	27/02/2015	7.20	7.10	7.22	7.10	---	---	3.46	2013	481	8	3,438.50	3,327.77	5.91	7.25	1775
51,950,600	0.320	0.25	0.3	---	20/06/2014	21/10/2005	---	METKA (CR)	9.00	-1.64	€ 9.15	27/02/2015	9.15	9.00	9.26	9.00	---	---	10.52	2013	47,587	225	432,720.21	467,555.40	8.36	10.50	2757
10,500,000	0.950	---	---	---	24/06/2008	19/12/2013	---	MEVACO SA (CR)	1.20	---	↘ 1.20	27/02/2015	---	---	---	---	---	---	---	2013	---	---	---	12,600.00	0.900	1.20	2757
6,700,000	0.800	---	0.16	---	26/05/2014	29/05/2014	---	MILLS KEPENOS (CR)	1.29	---	↘ 1.29	27/02/2015	---	---	---	---	---	---	7.03	2013	---	---	---	8,643.00	1.17	2.14	3577
6,200,000	0.500	---	---	---	22/06/2010	01/11/1995	---	MINERVA KNITWEAR SA (CB)	0.300	---	↘ 0.300	27/02/2015	---	---	---	---	---	---	---	2013	---	---	---	1,860.00	0.225	0.300	3763
12,417,000	0.370	---	---	---	28/07/2008	06/09/2011	---	MLS MULTIMEDIA SA (CR)	4.07	-0.25	€ 4.08	27/02/2015	3.99	3.99	4.07	4.07	---	---	43.16	2013	2,125	13	8,609.63	50,537.19	3.86	4.25	9537
4,588,137	16.00	---	---	---	30/06/2005	17/08/2011	---	MOCHLOS SA (CR)	0.823	-9.96	€ 0.914	27/02/2015	0.830	0.823	0.830	0.823	---	---	---	2013	3	3	2.48	3,776.04	0.659	1.05	2357
11,700,000	0.590	---	---	---	02/06/2009	24/07/2012	---	MOTODYNAMICS S.A. (CR)	0.300	---	↘ 0.300	27/02/2015	---	---	---	---	---	---	---	2013	---	---	---	3,510.00	0.261	0.300	5379
110,782,980	0.750	0.3	0.2	---	26/06/2014	04/11/2013	---	MOTOR OIL (CR)	7.72	-3.50	€ 8.00	27/02/2015	7.80	7.60	7.85	7.72	---	---	-(6)-	2013	101,602	386	784,140.81	855,244.61	5.64	8.07	533
116,915,862	1.07	---	---	---	11/05/2009	06/07/2011	---	MYTILINEOS HOLDINGS (CR)	6.20	-0.96	€ 6.26	27/02/2015	6.26	6.10	6.26	6.20	---	---	---	2013	281,535	689	1,741,056.60	724,878.34	4.18	6.97	1755
8,321,682	0.670	---	---	---	17/08/2007	23/11/1999	---	N. LEVEDERIS SA (CB)	0.174	---	↘ 0.174	27/02/2015	---	---	---	---	---	---	---	2013	---	---	---	2,692.43	0.162	0.220	1757
2,160,524	0.670	0.0436	0.0436	---	18/08/2014	23/11/1999	---	N. LEVEDERIS SA (PB)	0.576	6.67	# 0.540	27/02/2015	0.576	0.576	0.576	0.576	---	---	---	2013	5	1	2.88	2,692.43	0.380	0.609	1757
11,510,102	0.890	---	---	---	24/06/2005	06/10/1999	---	NAFPAKTOS TEXTILE IND. SA (CB)	0.282	---	↘ 0.282	27/02/2015	---	---	---	---	---	---	---	2013	---	---	---	3,245.85	0.193	0.302	3763



Number of Outstanding Securities	Nominal Value	Dividends [1]			Date of Last Coupon Dividend [2]		Note	Shares	Closing price	% change	Previous closing price/date	Open price	Price min	Price max	Last price	Avg price	Last Bid [7]	Last Ask [7]	P/E after	Year	Volume	Trades	Transactions Value[8]	Company Mkt Value (thou. €)	Year low	Year high	Sector[ 4]
		2012	2013	2014																							
5,848,618	---	---	---	---	24/01/2008	---	ALPHA ETF FTSE Athex Large Cap	2.53	-3.63	€ 2.62	27/02/2015	2.55	2.53	2.55	2.53	---	---	---	---	1,534	2	3,903.34	---	2.13	2.84	12003	
294,878	---	---	---	---	29/06/2009	---	NBGAM ETF	9.51	-3.55	€ 9.86	27/02/2015	9.51	9.51	9.51	9.51	---	---	---	---	2	1	19.02	---	7.97	10.37	12003	
388,550	---	---	---	---	03/11/2010	---	NBGAM ETF GREECE & TURKEY 30	7.61	-1.81	€ 7.75	27/02/2015	7.61	7.61	7.61	7.61	---	---	---	---	2	1	15.22	---	7.51	8.90	12003	

## Low Dispersion

14,000,000	4.15	---	---	---	23/04/2010	29/06/1999	4815	ALPHA REAL ESTATE SA(CR)	4.72	---	↘	4.72	27/02/2015	---	---	---	---	---	---	---	---	---	---	66,080.00	3.80	5.49	8637	
63,900,000	3.00	---	---	---	23/06/2003	04/11/2008	4816	ASTIR PALACE SA (CR)	2.88	-0.69	€	2.90	27/02/2015	2.88	2.88	2.88	2.88	---	---	---	2013	1,460	11	4,204.80	184,032.00	2.50	3.60	5753
90,902,904	0.800	---	---	---	09/08/2004	08/03/2006	4814	ATHENA SA (CR)	0.328	---	↘	0.328	27/02/2015	---	---	---	---	---	---	---	2013	---	---	---	29,816.15	0.328	0.328	2357
191,660,320	0.300	---	---	---	20/07/2009	29/12/2010	4817	ATTICA HOLDINGS (CR)	0.540	5.67	#	0.511	27/02/2015	0.540	0.540	0.540	0.540	---	---	---	2013	100	3	54.00	103,496.57	0.416	0.589	5759
71,082,707	1.70	---	---	---	01/07/2010	21/11/2012	4820	HERACLES GEN.CEMENT CO. (CR)	1.27	4.10	#	1.22	27/02/2015	1.27	1.27	1.28	1.28	---	---	---	2013	2,100	2	2,673.00	90,275.04	1.20	1.35	2353
13,404,440	8.63	---	---	---	02/04/2001	06/03/1992	4822	IONIAN HOTELS SA (CR)	5.05	---	↘	5.05	27/02/2015	---	---	---	---	---	---	89.66	2013	---	---	---	67,692.42	5.01	7.25	5753
2,760,000	7.70	8.52	8.5	---	30/06/2014	16/07/1990	4823	KARELIA TOBACCO CO. SA (CB)	288.65	-0.53	€	290.20	27/02/2015	285.90	285.90	289.00	289.00	---	---	---	2013	94	7	27,135.00	796,674.00	198.05	298.00	3785
30,600,000	0.300	---	---	---	12/06/2008	04/03/2014	5059	KATHIMERINI SA (CR)	0.387	-19.54	€	0.481	27/02/2015	0.387	0.387	0.387	0.387	---	---	---	2013	42	5	16.25	11,842.20	0.350	0.588	5557
14,074,000	3.00	---	---	---	02/03/2012	23/07/2009	5075	MIG REAL ESTATE (CR)	2.40	---	↘	2.40	27/02/2015	---	---	---	---	---	---	---	2013	---	---	---	33,777.60	2.08	3.45	8671
106,980,050	2.25	---	---	---	25/07/2008	24/02/2014	5046	MINOAN LINES SA (CR)	1.98	-1.00	€	2.00	27/02/2015	2.00	1.90	2.00	1.90	---	---	---	2013	738	6	1,462.20	211,820.50	1.43	2.00	5759
17,240,776	0.370	---	---	---	14/07/2005	30/09/2003	4827	PERSEUS SA (CR)	0.560	---	↘	0.560	27/02/2015	---	---	---	---	---	---	---	2013	---	---	---	9,654.83	0.560	0.700	3577

## Surveillance

33,301,715	0.320	---	---	---	27/06/2003	08/07/2009	4978	AEGEK (CR)	0.069	---	↘	0.069	27/02/2015	---	---	---	---	---	---	---	2013	---	---	---	2,297.82	0.032	0.074	2357	
5,000,000	0.400	---	---	---	03/06/2009	01/09/2014	5082	ALCO HELLAS SA (CR)	0.207	-17.20	€	0.250	27/02/2015	0.250	0.200	0.250	0.200	---	---	---	2013	680	7	141.00	1,035.00	0.200	0.307	1753	
14,870,100	0.300	---	---	---	15/05/2008	26/09/2011	4844	ALPHA GRISSIN S.A. (CR)	0.032	---	↘	0.032	27/02/2015	---	---	---	---	---	---	---	2013	---	---	---	475.84	0.032	0.048	9533	
215,246,452	0.300	---	---	---	25/06/2001	24/09/2001	4446	ALTEC SA (CR)	0.022	---	↘	0.022	27/02/2015	---	---	---	---	---	---	---	---	2013	---	---	---	4,735.42	0.017	0.030	9533
2,969,713	0.300	---	---	---	02/07/2008	28/02/2011	4958	ANEK LINES SA (PR, Issue '96)	0.130	---	↘	0.130	27/02/2015	---	---	---	---	---	---	---	2013	---	---	---	14,138.73	0.130	0.133	5759	
312,163	0.300	---	---	---	02/07/2008	28/02/2011	4959	ANEK LINES SA (PR, Issue '90)	1.30	---	↘	1.30	27/02/2015	---	---	---	---	---	---	---	2013	---	---	---	14,138.73	1.15	1.30	5759	
185,373,016	0.300	---	---	---	02/07/2008	28/02/2011	4957	ANEK LINES SA (CR)	0.072	-10.00	€	0.080	27/02/2015	0.071	0.071	0.073	0.073	---	---	---	2013	1,623	5	116.81	14,138.73	0.063	0.093	5759	
81,644,555	0.300	---	---	---	01/07/2008	02/09/2002	5056	ATTI - KAT SA (CR)	0.014	---	↘	0.014	27/02/2015	0.012	0.012	0.016	0.012	---	---	---	2013	869	5	12.43	1,143.02	0.009	0.037	2357	
20,255,805	0.300	---	---	---	22/08/2006	02/08/2010	4881	AXON HOLDING SA (CR)	0.035	9.38	#	0.032	27/02/2015	0.035	0.035	0.035	0.035	---	---	---	2013	20,000	1	700.00	708.95	0.022	0.038	4533	
17,579,754	4.16	---	---	---	18/08/2006	02/08/2010	4885	BIOTER SA (CR)	0.180	---	↘	0.180	27/02/2015	0.180	0.180	0.180	0.180	---	---	---	2013	1,500	1	270.00	3,164.36	0.160	0.250	2357	
1,130,180	0.440	---	---	---	20/06/2003	02/07/2014	---	COMPUCON SA (CR)	0.005	---	↘	0.005	27/02/2015	---	---	---	---	---	---	---	2013	---	---	---	5.65	0.005	0.010	9537	
14,173,104	0.300	---	---	---	11/08/2010	28/11/2013	5055	DIONIC (CR)	0.044	---	↘	0.044	27/02/2015	0.044	0.044	0.044	0.044	---	---	---	2013	3,542	1	155.85	623.62	0.042	0.086	2797	
15,878,748	0.480	---	---	---	10/07/2006	22/03/2004	4960	DOMKI KRITIS SA (CR)	0.299	8.73	#	0.275	27/02/2015	0.275	0.275	0.299	0.299	---	---	---	2013	1,515	4	452.63	4,747.75	0.260	0.340	2357	
3,961,300	1.28	---	---	---	29/06/2004	03/08/2000	5080	DUROS SA (CR)	0.375	---	↘	0.375	27/02/2015	---	---	---	---	---	---	---	2013	---	---	---	1,485.49	0.375	0.585	3763	
7,085,888	1.59	---	---	---	02/07/1996	06/09/2010	4690	ELVIEMEK (CR)	3.97	---	↘	3.97	27/02/2015	---	---	---	---	---	---	---	2013	---	---	---	28,130.98	3.97	3.97	8633	
6,000,000	0.600	---	---	---	13/06/2008	08/04/2004	4886	EUROBROKERS S.A. (CR)	0.011	---	↘	0.011	27/02/2015	---	---	---	---	---	---	---	2013	---	---	---	66.00	0.011	0.020	8534	
21,820,410	0.800	---	---	---	22/05/2008	02/08/2011	4882	EUROMEDICA SA (CR)	0.430	---	↘	0.430	27/02/2015	---	---	---	---	---	---	---	2013	---	---	---	9,382.78	0.320	0.430	4533	
110,097,185	0.300	---	---	---	04/12/2013	---	5033	Forthnet (CR)	0.800	---	↘	0.800	27/02/2015	0.800	0.800	0.800	0.800	---	---	---	2013	1,500	2	1,200.00	88,077.75	0.765	1.19	9535	
1,270,000	0.300	---	---	---	06/07/2007	06/02/2013	5007	GIRAKIAN PROFIL SA (CB)	0.295	---	↘	0.295	27/02/2015	---	---	---	---	---	---	---	2013	---	---	---	374.65	0.247	0.350	1757	
179,707,771	0.300	---	---	---	27/06/2002	01/11/2011	4847	HELLAS ONLINE SA (CR)	0.553	4.34	#	0.530	27/02/2015	0.549	0.549	0.555	0.555	---	---	---	2013	32,602	17	18,018.84	99,378.40	0.516	0.555	9537	

Number of Outstanding Securities	Nominal Value	Dividends [1]			Date of Last Coupon		Note	Shares	Closing price	% change	Previous closing price/date	Open price	Price min	Price max	Last price	Avg price	Last Bid [7]	Last Ask [7]	P/E after	Year	Volume	Trades	Transactions Value[8]	Company Mkt Value (thou. €)	Year low	Year high	Sector [4]
		2012	2013	2014	Dividend [2]	Right																					
30,390,000	0.310	---	---	---	18/08/2008	29/12/2006	4447	HELLENIC FISHFARMING SA (CR)	0.048	---	0.048	27/02/2015	0.040	0.040	0.050	0.050	---	---	2013	620	2	29.80	1,458.72	0.039	0.078	3573	
1,540,000	0.600	---	---	---	08/08/1994	19/09/2000	5058	J.BOUTARIS & SON HOLD. (PB)	0.005	---	0.005	27/02/2015	---	---	---	---	---	---	2013	---	---	---	763.09	0.005	0.007	3535	
25,179,640	0.600	---	---	---	08/08/1994	19/09/2000	5057	J.BOUTARIS & SON HOLD. SA (CB)	0.030	---	0.030	27/02/2015	---	---	---	---	---	---	2013	---	---	---	763.09	0.030	0.037	3535	
7,125,216	0.650	---	---	---	01/07/2005	14/12/1999	4955	KRE.KA SA (CR)	0.129	---	0.129	27/02/2015	---	---	---	---	---	---	2013	---	---	---	919.15	0.101	0.225	3573	
51,081,030	1.00	---	---	---	20/08/2007	03/09/2007	4912	LAVIPHARM SA (CR)	0.133	-8.28	0.145	27/02/2015	0.145	0.120	0.145	0.129	---	---	2013	3,209	10	427.18	6,793.78	0.086	0.145	4577	
4,178,856	1.58	---	---	---	21/07/2011	28/07/2004	4983	MEDICON S.A (CR)	0.260	1.17	0.257	27/02/2015	0.260	0.260	0.260	0.260	---	10.72	2013	508	4	132.08	1,086.50	0.257	0.475	4535	
255,459,600	0.300	---	---	---	26/06/2000	03/12/2010	4833	NEL SA (CR)	0.019	-13.64	0.022	27/02/2015	0.019	0.019	0.019	0.019	---	---	2013	412	4	7.83	4,853.73	0.009	0.030	5759	
20,231,328	0.600	---	---	---	15/07/2008	25/06/2004	4879	NIKAS SA (CR)	0.115	---	0.115	27/02/2015	0.115	0.115	0.115	0.115	---	---	2013	260	1	29.90	2,326.60	0.115	0.120	3577	
63,697,153	1.34	---	---	---	08/07/2008	10/11/2008	5081	NIREFS SA (CR)	0.085	---	0.085	27/02/2015	0.085	0.085	0.085	0.085	---	---	2013	2,100	5	178.50	5,414.26	0.072	0.106	3573	
14,967,940	0.500	---	---	---	21/05/2008	04/01/2008	4956	PASAL DEVELOPMENT S.A. (CR)	0.076	-20.00	0.095	27/02/2015	0.076	0.076	0.076	0.076	---	---	2013	289	2	21.96	1,137.56	0.060	0.118	8633	
18,750,000	0.300	---	---	---	02/07/2001	31/12/2012	4985	PEGASUS PUBLISHING S.A. (CR)	0.084	20.00	0.070	27/02/2015	0.084	0.084	0.084	0.084	---	---	2013	112	6	9.41	1,575.00	0.057	0.099	5557	
24,319,250	0.300	---	---	---	09/07/2002	04/07/2007	5054	PROODEFTIKH SA (CR)	0.100	---	0.100	27/02/2015	---	---	---	---	---	---	2013	---	---	---	2,431.93	0.057	0.116	2357	
65,326,268	0.530	---	---	---	04/07/2007	19/07/2006	4750	SATO SA (CR)	0.024	-20.00	0.030	27/02/2015	0.024	0.024	0.024	0.024	---	---	2013	18,250	4	438.00	1,567.83	0.024	0.115	3726	
36,235,184	1.00	---	---	---	01/07/2008	30/07/2012	4961	SELONDA AQUACULTURE SA (CR)	0.060	-16.67	0.072	27/02/2015	0.060	0.060	0.060	0.060	---	---	2013	1,296	4	77.76	2,174.11	0.060	0.099	3573	
7,914,480	0.300	---	---	---	23/06/2008	29/06/2011	4888	SFAKIANAKIS SA (CR)	1.74	---	1.74	27/02/2015	1.74	1.40	1.74	1.40	---	---	2013	1,624	2	2,822.36	13,771.20	1.40	2.58	5379	
10,000,000	1.35	---	---	---	24/06/2008	10/05/2005	4887	SIDMA SA (CR)	0.309	---	0.309	27/02/2015	---	---	---	---	---	---	2013	---	---	---	3,090.00	0.271	0.312	1757	
29,060,950	0.340	---	---	---	20/08/2007	24/10/2001	4884	SPIDER METAL INDUSTRY SA (CR)	0.006	---	0.006	27/02/2015	---	---	---	---	---	---	2013	---	---	---	174.37	0.005	0.008	2757	
100,793,000	0.300	---	---	---	16/07/2009	05/08/2013	5008	TELETIPOS SA (CR)	0.023	---	0.023	27/02/2015	---	---	---	---	---	---	2014	---	---	---	2,318.24	0.023	0.108	5553	
3,229,566	0.320	---	---	---	22/06/2005	23/09/1999	4629	VARANGIS AVEPE S.A. (CR)	0.520	---	0.520	27/02/2015	---	---	---	---	---	---	2013	---	---	---	1,679.37	0.520	0.520	3726	
16,383,428	0.300	---	---	---	25/06/2002	21/06/2013	4997	VARVRESSOS SA (CB)	0.129	---	0.129	27/02/2015	---	---	---	---	---	0.18	2013	---	---	---	2,113.46	0.129	0.161	3763	
13,191,620	0.620	---	---	---	04/08/2010	09/09/2002	4977	YALCO - CONSTANTINOU SA (CB)	0.079	-19.39	0.098	27/02/2015	0.079	0.079	0.079	0.079	---	---	2013	871	3	68.81	1,042.14	0.079	0.189	3722	

Under Deletion																											
9,567,289	0.300	---	---	---	01/07/2004	19/11/2007	5062	MARAC ELECTRONICS (CR)	0.298	---	0.298	27/02/2015	---	---	---	---	---	---	2013	---	---	---	2,851.05	0.298	0.298	9578	
40,946,303	0.360	---	---	---	18/07/2005	27/11/2007	5053	PC SYSTEMS SA (CR)	0.041	---	0.041	27/02/2015	---	---	---	---	---	---	2013	---	---	---	1,678.80	0.040	0.098	9533	
766,000	1.50	---	---	---	01/07/2004	11/12/2012	4937	TRIA ALFA SA (CR)	1.90	---	1.90	27/02/2015	---	---	---	---	---	---	2013	---	---	---	1,786.15	1.90	2.29	3763	
245,000	1.50	---	---	---	19/07/2010	11/12/2012	4938	TRIA ALFA SA (PR)	1.35	---	1.35	27/02/2015	---	---	---	---	---	---	2013	---	---	---	1,786.15	1.35	1.35	3763	

Suspension Status																											
5,025,000	0.300	---	---	---	05/07/2005	14/03/2002	5023	ALSINCO S.A (CR)	0.043	---	0.043	27/02/2015	---	---	---	---	---	---	---	---	---	---	216.08	0.043	0.043	3763	
1,750,955,549	0.600	---	---	---	19/05/2008	08/12/2011	4911	ATE (CR)	0.155	---	0.155	27/02/2015	---	---	---	---	---	---	---	---	---	---	271,398.11	0.155	0.155	8355	
21,382,067	0.300	---	---	---	02/10/2006	15/02/2006	4628	ATERMON (CR)	0.120	---	0.120	27/02/2015	---	---	---	---	---	---	---	---	---	---	2,565.85	0.120	0.120	5555	
105,423,498	0.510	---	---	---	01/07/2004	28/12/2005	4920	AVENIR S.A. (CR)	0.046	---	0.046	27/02/2015	---	---	---	---	---	---	---	---	---	---	4,849.48	0.046	0.046	5752	
33,930,000	0.300	---	---	---	03/07/2006	30/05/2001	4865	BABIS VOVOS SA (CR)	0.304	---	0.304	27/02/2015	---	---	---	---	---	---	---	---	---	---	10,314.72	0.304	0.304	8633	
20,121,710	1.21	---	---	---	27/07/1992	12/03/2003	5002	BALKAN R.E. (CR)	0.190	---	0.190	27/02/2015	---	---	---	---	---	---	---	---	---	---	3,823.12	0.190	0.190	8633	
21,920,570	0.300	---	---	---	03/07/2007	13/12/1999	4702	CARDASSILARIS SA (CR)	0.140	---	0.140	27/02/2015	---	---	---	---	---	---	---	---	---	---	3,068.88	0.140	0.140	3577	
54,547,634	0.500	---	---	---	25/04/2005	21/01/2009	4860	CH.TEGOPOULOS PUBL. SA (CR)	0.038	---	0.038	27/02/2015	---	---	---	---	---	---	---	---	---	---	2,072.81	0.038	0.038	5557	
30,159,583	0.470	---	---	---	26/06/2008	29/12/2010	5047	DIAS A/C (CR)	0.050	---	0.050	27/02/2015	---	---	---	---	---	---	---	---	---	---	1,507.98	0.050	0.050	3573	

Number of Outstanding Securities	Nominal Value	Dividends [1] 2012 2013 2014	Date of Last Coupon Dividend [2]	Date of Last Coupon Right	Note	Shares	Closing price	% change	Previous closing price/date	Open price	Price min	Price max	Last price	Avg price	Last Bid [7]	Last Ask [7]	P/E after	Year	Volume	Trades	Transactions Value[8]	Company Mkt Value (thou. €)	Year low	Year high	Sector[4]	
7,847,611	1.20	---	---	---	01/08/2007	28/09/2011	4939	EDRASIS - C. PSALLIDAS SA (CR)	0.150	---	0.150	27/02/2015	---	---	---	---	---	---	---	---	---	---	1,177.14	0.150	0.150	2357
5,750,000	0.300	---	---	---	12/12/2008	12/12/2011	4929	ELECTRONIKI ATHINON SA (CR)	0.480	---	0.480	27/02/2015	---	---	---	---	---	---	---	---	---	---	2,760.00	0.480	0.480	5375
24,605,397	0.400	---	---	---	29/06/1995	27/05/2002	4651	EMPORIKOS DESMOS SA (CR)	0.080	---	0.080	27/02/2015	---	---	---	---	---	---	---	---	---	---	2,134.04	0.080	0.080	3722
1,182,903	0.400	---	---	---	01/07/1996	27/05/2002	4652	EMPORIKOS DESMOS SA (PR)	0.140	---	0.140	27/02/2015	---	---	---	---	---	---	---	---	---	---	2,134.04	0.140	0.140	3722
7,326,648	1.00	---	---	---	26/07/2006	24/07/2001	4921	FINTEXPORT SA (CR)	0.328	---	0.328	27/02/2015	---	---	---	---	---	---	---	---	---	---	2,403.14	0.328	0.328	3763
13,692,227	1.47	---	---	---	07/07/2006	08/10/1999	5049	HELLENIC FABRICS SA (CR)	0.117	---	0.117	27/02/2015	---	---	---	---	---	---	---	---	---	---	1,601.99	0.117	0.117	3763
24,619,524	0.500	---	---	---	10/10/1986	30/12/2002	4914	KERAMIA-ALLATINI (CR)	0.088	---	0.088	27/02/2015	---	---	---	---	---	---	---	---	---	---	2,166.52	0.088	0.088	8633
7,840,373	1.20	---	---	---	18/07/2002	05/03/2003	4765	KLONATEX SA (PR)	0.080	---	0.080	27/02/2015	---	---	---	---	---	---	---	---	---	---	1,453.75	0.080	0.080	3763
20,663,047	1.20	---	---	---	21/08/2000	05/03/2003	4764	KLONATEX SA (CR)	0.040	---	0.040	27/02/2015	---	---	---	---	---	---	---	---	---	---	1,453.75	0.040	0.040	3763
17,544,600	0.600	---	---	---	03/07/2000	01/08/2000	4868	KOYMBAS SYNERGY GROUP (CR)	0.132	---	0.132	27/02/2015	---	---	---	---	---	---	---	---	---	---	2,315.89	0.132	0.132	8775
15,015,000	1.60	---	---	---	01/07/2002	02/02/2000	4603	MAXIM C.M. PERTSINIDIS SA (CB)	0.100	---	0.100	27/02/2015	---	---	---	---	---	---	---	---	---	---	1,501.50	0.100	0.100	3763
66,937,526	0.700	---	---	---	13/08/2010	21/05/2003	5003	MICHANIKI SA (CR)	0.100	---	0.100	27/02/2015	---	---	---	---	---	---	---	---	---	---	9,186.78	0.100	0.100	2357
25,968,987	0.700	---	---	---	13/08/2010	21/05/2003	5004	MICHANIKI SA (PR)	0.096	---	0.096	27/02/2015	---	---	---	---	---	---	---	---	---	---	9,186.78	0.096	0.096	2357
13,555,100	1.00	---	---	---	08/07/2005		4576	MICROLAND COMPUTERS SA (CR)	0.640	---	0.640	27/02/2015	---	---	---	---	---	---	---	---	---	---	8,675.26	0.640	0.640	5379
23,463,874	0.800	---	---	---	23/05/2003	21/12/1999	4918	NEORION SA (CR)	0.125	---	0.125	27/02/2015	---	---	---	---	---	---	---	---	---	---	2,932.98	0.125	0.125	2753
42,501,273	0.300	---	---	---	26/06/2007	10/08/2009	4993	NUTRIART (CR)	0.049	---	0.049	27/02/2015	---	---	---	---	---	---	---	---	---	---	2,082.56	0.049	0.049	3577
20,210,127	1.53	---	---	---	27/06/1997	20/03/2000	5061	PARNASSOS ENTERP. (CR)	0.070	---	0.070	27/02/2015	---	---	---	---	---	---	---	---	---	---	1,414.71	0.070	0.070	8775
25,583,146	0.300	---	---	---	25/06/2001	03/12/2008	4723	PETZETAKIS SA (CR)	0.260	---	0.260	27/02/2015	---	---	---	---	---	---	---	---	---	---	6,651.62	0.260	0.260	1357
9,550,386	0.500	---	---	---	01/07/1997	12/06/2008	4626	PRAXITELIO SA (CR)	0.390	---	0.390	27/02/2015	---	---	---	---	---	---	---	---	---	---	4,430.09	0.390	0.390	4533
1,306,368	0.500	---	---	---	01/07/1997	12/06/2008	4627	PRAXITELIO SA (PR)	0.540	---	0.540	27/02/2015	---	---	---	---	---	---	---	---	---	---	4,430.09	0.540	0.540	4533
62,683,822	0.300	---	---	---	27/05/2008	09/01/2006	4830	PROTON BANK S.A. (CR)	0.180	---	0.180	27/02/2015	---	---	---	---	---	---	---	---	---	---	11,283.09	0.180	0.180	8355
51,334,286	0.320	---	---	---	03/07/2000	18/12/2007	4548	SAOS (CR)	0.780	---	0.780	27/02/2015	---	---	---	---	---	---	---	---	---	---	40,040.74	0.780	0.780	2773
26,408,040	0.300	---	---	---	01/07/1997	26/05/1999	4464	SHEET STEEL SA (CR)	0.120	---	0.120	27/02/2015	---	---	---	---	---	---	---	---	---	---	3,168.96	0.120	0.120	1757
60,221,300	0.400	---	---	---	01/07/2002	01/11/2010	5022	SHELMAN SA (CR)	0.080	---	0.080	27/02/2015	---	---	---	---	---	---	---	---	---	---	4,817.70	0.080	0.080	2353
26,262,660	0.900	---	---	---	01/07/2008	24/02/2011	4954	SPRIDER STORES (CR)	0.031	---	0.031	27/02/2015	---	---	---	---	---	---	---	---	---	---	814.14	0.031	0.031	5371
144,688,060	0.600	---	---	---	21/04/2008	10/03/2010	4982	T BANK (CR)	0.048	---	0.048	27/02/2015	---	---	---	---	---	---	---	---	---	---	6,945.03	0.048	0.048	8355
6,523,780	0.530	---	---	---	01/07/2002	06/03/2001	4971	TECHNICAL PUBLICATIONS SA (CR)	0.006	---	0.006	27/02/2015	---	---	---	---	---	---	---	---	---	---	39.14	0.006	0.006	5557
13,920,000	0.320	---	---	---	19/11/2001	01/08/2000	4726	TEXAPRET SA (CR)	0.080	---	0.080	27/02/2015	---	---	---	---	---	---	---	---	---	---	1,113.60	0.080	0.080	3763
510,840	1.00	---	---	---	15/07/2008	21/11/2013	5036	TROPEA HOLDING (CR)	2.00	---	2.00	27/02/2015	---	---	---	---	---	---	---	---	---	---	1,021.68	2.00	2.00	3722
284,465,964	3.70	---	---	---	20/06/2008	15/06/2009	4913	TT HELLENIC POSTBANK (CR)	0.168	---	0.168	27/02/2015	---	---	---	---	---	---	---	---	---	---	47,790.28	0.168	0.168	8355
89,616,200	0.300	---	---	---	21/08/2000	28/06/2007	4616	UNITED TEXTILES (CR)	0.050	---	0.050	27/02/2015	---	---	---	---	---	---	---	---	---	---	4,480.81	0.050	0.050	3763
71,683,906	0.400	---	---	---	15/06/2005	05/02/2008	4953	XATZIOANNOU (CR)	0.026	---	0.026	27/02/2015	---	---	---	---	---	---	---	---	---	---	1,863.78	0.026	0.026	3763



Shares' Notes

Code	Note text
( )	- Adjusted dividends.
*	- Last adjusted closing price.
[1]	- Net dividends.
[2]	- The "Date of Last Coupon" for New listings refers to the date company's stocks started to trade in Athex
[3]	- The Company Market Value is referred to the number of outstanding shares
[4]	- Sectors codification can be found in Appendix A
[5]	- The Market Value refers to the total number of shares listed (including their several classes) in the exchange by the company.
[6]	- P/E greater than 100
[7]	- Last view of the Order Book before the end of the trading session
[8]	- All Blocks Methods' Transactions Value are included.
4446	- Transfer to the "Under Supervision" Category as of 20/10/2008.
4447	- Transfer to the "Under Supervision" Category as of 21/10/2008.
4464	- Suspension of trading as of 1/12/2008.
4548	- Suspension of trading as of 1/4/2009.
4576	- Suspension of trading as of 14/7/2009.
4603	- Suspension of trading as of 1/12/2009.
4616	- Suspension of trading as of 25/2/2010.
4626	- Suspension of trading as of 1/4/2010.
4627	- Suspension of trading as of 1/4/2010.
4628	- Suspension of trading as of 1/4/2010.
4629	- Transfer to the Under Supervision Category as of 12/4/2010.
4651	- Suspension of trading as of 1/6/2010.
4652	- Suspension of trading as of 1/6/2010.
4690	- Transfer to Surveillance category as of 4/4/2006.
4702	- Suspension of trading as of 1/12/2010.
4723	- Suspension of trading as of 31/1/2011.
4726	- Suspension of trading as of 1/3/2011.
4750	- Transfer to the "Under Surveillance Category" from 8/4/2011.
4764	- Suspension of trading as of 20/5/2011.
4765	- Suspension of trading as of 20/5/2011.
4795	- The final gross (pre-tax) dividend is € 0.30 per share and subject to withholding tax on the full dividend amount, i.e. 0,45 per share, for those shareholders liable to withholding tax, in accordance with the applicable tax law provisions.
4814	- Transfer to the Low Dispersion Category as of 30/5/2011.
4815	- Transfer to the Low Dispersion Category as of 30/5/2011.
4816	- Transfer to the Low Dispersion Category as of 30/5/2011.
4817	- Transfer to the Low Dispersion Category as of 30/5/2011.
4820	- Transfer to the Low Dispersion category as of 18/4/2008.
4822	- Transfer to the Low Dispersion category as of 30/5/2011.
4823	- Transfer to the Low Dispersion category as of 4/4/2006.
4827	- Transfer to the Low Dispersion category as of 5/5/2010.
4830	- Suspension of trading as of 10/10/2011.
4833	- Transfer to Surveillance category from 6/5/2010.
4844	- Transfer to the Surveillance category from 8/4/2011.
4847	- Transfer to the Surveillance Category as of 3/7/2009.
4857	- The 793,906,274 new (CR) shares, resulting from the recent share capital increase through a rights issue, are not yet admitted to trading on the ATHEX.
4860	- Suspension of trading as of 30/3/2012.
4865	- Suspension of trading as of 2/4/2012.
4868	- Suspension of trading as of 2/4/2012.
4879	- Transfer to the Surveillance Category as of 10/4/2012.
4881	- Transfer to the Surveillance Category as of 10/4/2012.
4882	- Transfer to the Surveillance Category as of 10/4/2012.
4884	- Transfer to the Surveillance Category as of 10/4/2012.

Shares' Notes

Code	Note text
4885	- Transfer to the Surveillance Category as of 10/4/2012.
4886	- Transfer to the Surveillance Category as of 10/4/2012.
4887	- Transfer to the Surveillance Category as of 10/4/2012.
4888	- Transfer to the Surveillance Category as of 10/4/2012.
4911	- Lift of suspension from 30/7/2012.
4912	- Transfer to the Surveillance Category as of 31/7/2012.
4913	- Suspension of trading as of 30/8/2012.
4914	- Suspension of trading as of 31/8/2012.
4918	- Suspension of trading as of 31/8/2012.
4920	- Suspension of trading as of 31/8/2012.
4921	- Suspension of trading as of 31/8/2012.
4929	- Suspension of trading as of 1/10/2012.
4937	- Transfer to the UNDER DELETION category as of 30/11/2012.
4938	- Transfer to the UNDER DELETION category as of 30/11/2012.
4939	- Suspension of trading as of 30/11/2012.
4953	- Suspension of trading as of 2/4/2013.
4954	- Suspension of trading as of 2/4/2013.
4955	- Transfer to the Surveillance Category as from 5/4/2013.
4956	- Transfer to the Surveillance Category as from 5/4/2013.
4957	- Transfer to the Surveillance Category as from 5/4/2013.
4958	- Transfer to the Surveillance Category as from 5/4/2013.
4959	- Transfer to the Surveillance Category as from 5/4/2013.
4960	- Transfer to the Surveillance Category as from 5/4/2013.
4961	- Transfer to the Surveillance Category as from 5/4/2013.
4971	- Suspension of trading as of 3/6/2013.
4977	- Transfer to the "Under Surveillance Category" from 11/6/2013.
4978	- Transfer to the Under Supervision Category as of 11/6/2013.
4982	- Suspension of trading as of 1/12/2011.
4983	- Transfer to the Surveillance Category as of 5/4/2013.
4985	- Transfer to the "Under Surveillance Category" from 8/4/2011.
4993	- Suspension of trading as of 21/6/2013 (15:18).
4997	- Transfer to the Under Supervision Category as of 21/12/2009. - The 6,870,053 new (CB) shares, resulting from the recent share capital increase through a rights issue, are not yet admitted to trading on the ATHEX.
5002	- Suspension of trading as of 30/08/2013.
5003	- Suspension of trading as of 30/08/2013.
5004	- Suspension of trading as of 30/08/2013.
5007	- Transfer to the Surveillance category, as of 11/10/2013.
5008	- Transfer to the Surveillance Category from 8/4/2011.
5022	- Suspension of trading as of 2/12/2013.
5023	- Suspension of trading as of 2/12/2013.
5031	- The 612,300 new (CR) shares, resulting from the recent share capital increase through a rights issue, are not yet admitted to trading on the ATHEX.
5033	- Transfer to the Surveillance Category as of 25/11/2011. The 97,144,575new (CR) shares, resulting from the recent share capital increase through a rights issue, are not yet admitted to trading on the ATHEX.
5036	- The company's share is under suspension of trading as of 2/4/2012. During suspension, the company proceeded and concluded a share reverse split, according to which - after the conclusion of the corporate action - the total number of the company's shares, as well as, the last closing price of 30/03/2012 were adjusted.
5046	- Transfer to the Low Dispersion category as of 8/4/2011.
5047	- Suspension of trading as of 27/3/2014.
5049	- Under suspension of trading as of 1/4/2014.
5053	- Transfer to the UNDER DELETION category as of 10/4/2014.
5054	- Transfer to the Surveillance Category as of 10/4/2014.
5055	- Transfer to the Surveillance Category as of 10/4/2014.
5056	- Transfer to the Under Supervision Category as of 14/4/2014.
5057	- Transfer to the Surveillance Category as of 29/12/2011.
5058	- Transfer to the Surveillance Category as of 29/12/2011.

---

## Shares' Notes

---

Code	Note text
5059	- Transfer to the Low Dispersion category as of 2/6/2014.
5061	- Suspension of trading as of 2/6/2014.
5062	- Transfer to the UNDER DELETION category as of 4/6/2014.
5069	- Suspension of trading as of 1/10/2014.
5073	- The 90,000 new (CR) shares, resulting from the recent share capital increase through a rights issue, are not yet admitted to trading on the ATHEX.
5075	- Transfer to the "Low Dispersion" Category as of 31/10/2014.
5080	- Suspension of trading as of 6/9/2011.
5081	- Transfer to the Surveillance category, as of 19/12/2014.
5082	- Transfer to the Surveillance category, as of 26/02/2015.

### Securities Blocks Details

Securities	Block Volume	Price	Block Trade Value	Time of approval	Note
LAMDA DEVELOPMENT SA (CR)	258,168	4.27	1,102,377.36	10:33:09	20
MYTILINEOS HOLDINGS (CR)	40,000	6.26	250,400.00	10:39:42	20
EUROBANK ERGASIAS (CR)	2,050,000	0.129	264,450.00	11:26:54	20
BANK OF CYPRUS (CR)	45,106,301	0.197	8,885,941.30	16:55:49	20

### Blocks Notes

- 9 - Method 6-1 / Special Fees
- 10 - Method 6-1 / Special Fees, SDS
- 14 - Method 6-3 / Settlement, Incomplete Buy and Sell
- 18 - Method 6-2 / SPOT 1
- 19 - Method 6-2 / SPOT 2
- 20 - Method 6-1 and Method 6-1 Same Day Settlement
- 21 - Other Pre-agreed

**Shares Rights Details**

Occured date	Exercise from	Exercise until	Trading until	Rights	Price min	Price max	Closing price	Last Bid	Last Ask	Volume	Trades	Transactions Value
--------------	---------------	----------------	---------------	--------	-----------	-----------	---------------	----------	----------	--------	--------	--------------------

No Rights Transactions.

---

**Shares Forced Sales**

---

Securities	Transaction s Volume	Number of Trades	Transactions Value	Note
------------	-------------------------	---------------------	-----------------------	------

---

No Forced Transactions.

---

---

**Forced Sales Notes**

---

- 1 - Normal Forced Sale.
- 2 - Forced Sales of Fixed Registered Shares.
- 3 - Forced Sales of Remaining Stock Fractions.

**Forced Sales Registered Shares**

Securities	Start Date	End Date	Initial Volume	Remaining Volume	Date	Avg price (day)	Avg price (period)	Number of Trades	Transactions Volume	Transactions Value
------------	------------	----------	----------------	------------------	------	-----------------	--------------------	------------------	---------------------	--------------------

No Fixed Registered Shares Forced Sales.

**Forced Sales Notes**

According to Decision 1/380/04.05.2008 of the Hellenic Republic Capital Market Commission, the certificated registered shares that have not been deposited to the issuer for dematerialisation, will be auctioned in the Athens Exchange by the supervising issuer. Forced sales procedure is held according to Article 99A of the Athens Exchange Rulebook. The average price of the period is calculated by dividing the Total transactions value by the Total volume and includes all the transactions made until the current date.

## Exchange Traded Funds (ETFs) Characteristics

	Transactions Date (T)	Creation / Redemption	Units (T-1)	New Units (T-1)	Redemption Units (T-1)	Units (T) [1]	Fund Assets [2]	Net Unit Price	Dividend per	Dividend Date
NBGAM ETF ΓΔ Χ.Α.	02/03/2015	25,000	294,878	---	---	294,878	2,892,102.00	9.8078	---	27/10/2011
ALPHA ETF FTSE Athex Large Cap	02/03/2015	50,000	5,848,618	---	---	5,848,618	15,282,880.00	2.6131	0.05	01/07/2013
NBGAM ETF GREECE & TURKEY 30	02/03/2015	25,000	388,550	---	---	388,550	2,988,988.00	7.6927	---	27/10/2011

## ETFs Notes

[1] - Units (T) = Units (T-1) + New Units (T-1) - Redemption Units (T-1)

[2] - The Creation / Redemption Units of T-1 are included.



## Corporate Bonds

Num Listed Bonds	Nominal price	Issue price	Today's Rate	Exp. Date	Duration (years)	Note	Coupon attached		Trading	Corporate Bonds	Price min	Price max	Closing price	Previous closing		Volume	Transactions Value	Last order			ear min	Year max
							Common	Preferred						price	price/date			Price	Buy / Sell	Date		
4,122,910	4.77	4.77	5.00	19/03/2015	5	---	20	---	1	MARFIN INVESTMENT GROUP S.A. (Conver to CR shar)	---	---	---	90.0000	18/02/2015	---	---	81.0000	B	28/11/2014	90.0000	90.0000
1,794,284	12.49	9.77	5.05	12/07/2015	8	---	---	---	1	NIREUS S.A. (Convertible to CR shares)	---	---	---	12.0000	29/01/2014	---	---	11.0000	B	17/11/2014	12.0000	12.0000
212,801,311	1.00	1.00	6.30	29/07/2020	7	---	7	---	1	MARFIN INVESTMENT GROUP S.A. SERIES B (BOND)	---	---	---	0.8500	23/08/2013	---	---	1.0000	B	28/11/2014	0.8500	0.8500
163,991,598	1.00	1.00	7.00	29/07/2019	6	---	7	---	1	MARFIN INVESTMENT GROUP S.A. SERIES A (BOND)	---	---	---	1.0000	23/08/2013	---	---	1.0000	B	28/11/2014	1.0000	1.0000

## Corporate Bonds Notes

Transactions Volume = (Pieces) \* (Nominal Price). Transactions Value = (Pieces) \* (Nominal Price) \* (price %) + (Accrued interest).

The price of a Bond is stated as a percentage (%) of Bond's Nominal Price.

Nominal Price in Euros (€), except if it is noted differently.

## Government Bonds

Number Listed Bonds	Nominal price	Today's Rate	Accrued Interest Calc	Exp. Date [1]	Duration (years)	Note	Coupons Date	Curr. coupon value	Trading Unit	Government Bonds	Price min	Price max	Closing price	Previous closing price/date	Volume	Transactions Value	Price	Last order Buy / Sell	Date
1,792,455,803	1.00	4.30	Actual/Actual	24/02/2023	11	---	24/02	4.30	1	GGB-FXD-240223-11Y-2.000-1.00	---	---	---	10.0000 28/01/2015	---	---	---	---	---
1,771,485,249	1.00	4.30	Actual/Actual	24/02/2024	12	---	24/02	4.30	1	GGB-FXD-240224-12Y-2.000-1.00	---	---	---	10.0000 28/01/2015	---	---	---	---	---
1,744,316,583	1.00	4.30	Actual/Actual	24/02/2025	13	---	24/02	4.30	1	GGB-FXD-240225-13Y-2.000-1.00	---	---	---	10.0000 28/01/2015	---	---	---	---	---
1,498,761,836	1.00	4.30	Actual/Actual	24/02/2026	14	---	24/02	4.30	1	GGB-FXD-240226-14Y-2.000-1.00	---	---	---	10.0000 28/01/2015	---	---	---	---	---
1,469,952,920	1.00	4.30	Actual/Actual	24/02/2027	15	---	24/02	4.30	1	GGB-FXD-240227-15Y-2.000-1.00	---	---	---	10.0000 28/01/2015	---	---	---	---	---
1,525,434,082	1.00	4.30	Actual/Actual	24/02/2028	16	---	24/02	4.30	1	GGB-FXD-240228-16Y-2.000-1.00	---	---	---	10.0000 28/01/2015	---	---	---	---	---
1,503,860,546	1.00	4.30	Actual/Actual	24/02/2029	17	---	24/02	4.30	1	GGB-FXD-240229-17Y-2.000-1.00	---	---	---	10.0000 28/01/2015	---	---	---	---	---
1,435,418,132	1.00	4.30	Actual/Actual	24/02/2030	18	---	24/02	4.30	1	GGB-FXD-240230-18Y-2.000-1.00	---	---	---	10.0000 28/01/2015	---	---	---	---	---
1,368,045,727	1.00	4.30	Actual/Actual	24/02/2031	19	---	24/02	4.30	1	GGB-FXD-240231-19Y-2.000-1.00	---	---	---	10.0000 28/01/2015	---	---	---	---	---
1,373,758,194	1.00	4.30	Actual/Actual	24/02/2032	20	---	24/02	4.30	1	GGB-FXD-240232-20Y-2.000-1.00	---	---	---	10.0000 28/01/2015	---	---	---	---	---
1,452,639,893	1.00	4.30	Actual/Actual	24/02/2033	21	---	24/02	4.30	1	GGB-FXD-240233-21Y-2.000-1.00	---	---	---	10.0000 28/01/2015	---	---	---	---	---
1,410,344,954	1.00	4.30	Actual/Actual	24/02/2034	22	---	24/02	4.30	1	GGB-FXD-240234-22Y-2.000-1.00	---	---	---	10.0000 28/01/2015	---	---	---	---	---
1,444,202,190	1.00	4.30	Actual/Actual	24/02/2035	23	---	24/02	4.30	1	GGB-FXD-240235-23Y-2.000-1.00	---	---	---	10.0000 28/01/2015	---	---	---	---	---
1,505,138,031	1.00	4.30	Actual/Actual	24/02/2036	24	---	24/02	4.30	1	GGB-FXD-240236-24Y-2.000-1.00	---	---	---	10.0000 28/01/2015	---	---	---	---	---
1,396,254,095	1.00	4.30	Actual/Actual	24/02/2037	25	---	24/02	4.30	1	GGB-FXD-240237-25Y-2.000-1.00	---	---	---	10.0000 28/01/2015	---	---	---	---	---
1,382,167,704	1.00	4.30	Actual/Actual	24/02/2038	26	---	24/02	4.30	1	GGB-FXD-240238-26Y-2.000-1.00	---	---	---	10.0000 28/01/2015	---	---	---	---	---
1,337,331,257	1.00	4.30	Actual/Actual	24/02/2039	27	---	24/02	4.30	1	GGB-FXD-240239-27Y-2.000-1.00	---	---	---	10.0000 28/01/2015	---	---	---	---	---
1,371,908,706	1.00	4.30	Actual/Actual	24/02/2040	28	---	24/02	4.30	1	GGB-FXD-240240-28Y-2.000-1.00	---	---	---	10.0000 28/01/2015	---	---	---	---	---
1,360,659,778	1.00	4.30	Actual/Actual	24/02/2041	29	---	24/02	4.30	1	GGB-FXD-240241-29Y-2.000-1.00	---	---	---	10.0000 28/01/2015	---	---	---	---	---
1,432,747,403	1.00	4.30	Actual/Actual	24/02/2042	30	---	24/02	4.30	1	GGB-FXD-240242-30Y-2.000-1.00	---	---	---	10.0000 28/01/2015	---	---	---	---	---
742,153	1,000.00	0.93	FLR Actual/360	10/08/2019	5	---	10/02 - 10/08	---	1	GGB-FLT-100819-05Y-0.934-1.000	---	---	---	---	---	---	---	---	---
4,030,827	1,000.00	4.75	Actual/Actual	17/04/2019	5	---	17/04	4.75	1	GGB-FXD-170419-05Y-4.750-1.000	---	---	---	---	---	---	---	---	---
2,089,066	1,000.00	3.38	Actual/Actual	17/07/2017	3	---	17/07	3.38	1	GGB-FXD-170717-03Y-3.375-1.000	---	---	---	---	---	---	---	---	---

## Government Bonds Notes

Transactions Volume = (Pieces) \* (Nominal Price). Transactions Value = (Pieces) \* (Nominal Price) \* (price %) + (Accrued interest).

The Value of current coupon for the issues with NV 0.01 euro refers to NV 100 euros

FLR: Floating Interest Rate.

[1] - The Expiration Date of the interest bearing period and the Date for coupon payment.

Bonds in Circulation	Currency / Min nominal traded Value	Coupons Payment Date	Current Coupon Value	Note	Coupon Attached	Trading Unit	Issue Date	Duration (years)	Today's Interest	A.I.C in days	Bonds	Last price of previous days	Last Outcry in Cash (euro) Price	Buy / Sell	Date	Trades in Pieces	Life min	Life Max	
<b>Bonds of International Organizations</b>																			
1,000,000	EUR / 1000	21/07	---	---	9	1	21/07/2006	10	5.0 FLR	360	EUROPEAN INVESTMENT BANK BOND	97.50	16/04/2007	---	---	---	---	---	
<b>Corporate Bonds in Foreign Currency and Euro</b>																			
103,746	GBP / 10	01/12	0.25	---	56	1	01/12/1930	98	2.5	360	National Mortgage Bank	2.27	05/02/1996	2.27	S	05/02/1996	---	2.27	2.27
0	GBP / 10	01/12	0.25	---	58	1	01/12/1928	100	2.5	360	National Mortgage Bank	---	---	---	---	---	---	---	---

**Government Bonds Notes**

A.I.C: Accrued Interest Calculation base.

FLR: Floating Interest Rate.

The minimum tradeable Nominal Value for all Demeterialised Government Titles is 100 Euros.

## State Banks Bonds (one year maturity)

Number Listed Bonds	Nominal value	Initial Rate	Current Rate	Annual Interest	Issue Date	Note	State Banks Bonds	Trading Unit	Yearly Renewals	Last Outcry in Cash (euro)		Volume
										Price	Buy / Sell	
2,446	1,182.96	4.90	2.47	29.69	31/05/2008	---	H.I.D.B.	1	7	---	---	---

## Bonds Notes

The annual renewal of H.I.D.B. Bonds is free of taxes (net rate).  
For Bonds issue until 27/02/2015 the accrued interest is capitalized.

**Athex & ATHEXCclear Members List**

Member Name	Stock Market			Derivatives Market		ATHEXCclear Member					
	Address	Phone	Fax	Market Member	Remote Member	Market Maker	Proprietary	Market Maker	General Clearing	Direct Clearing	Non Clearing
A. SARRIS SECURITIES S.A.				a							
6, DRAGATSANIOU STR. ATHINA	(210)-3367700	(210)-3312324									
ALPHA FINANCE INVESTMENT SERVICES S.A.				a		a		a		a	
5, MERLIN STR. ATHINA	(210)-3677400	(210)-3311193									
ALPHA BANK A.E.									a		
40, STADIOU STR ATHINA	(210)-3265546 (210)-3260000	(210)-3265811 (210)-3264116									
ARGUS STOCKBROKERS LTD				a	a		a				
12-14, KENNEDY AVE, S. 303 NICOSIA	(+35722)-22717000	(+35722)-22717070									
ATLANTIC SECURITIES LIMITED				a	a						
37, PRODROMOU STR. NICOSIA	(+35722)-445400	(+35722)-661914									
ATLAS SECURITIES S.A.				a			a				a
14 - 16, VERNON STR.& 125 MICHALAKOPOULOU STR. ATHINA	(210)-3363300	(210)-3238925									
ATTICA BANK S.A.									a		
23, OMIROU STR. ATHINA	(210)-3669000	(210)-3669410									
54, AKADIMIAS STR. ATHINA	(210)-3390757	(210)-3646090									
AXIA VENTURES GROUP LTD				a	a						
10, G. KRANIDIOTI NICOSIA	+357 22 742000	+357 22 742001									
AXON SECURITIES S.A.				a			a				a
48, STADIOU ATHINA	(210)-3363800	(210)-3243903									
BANK OF CYPRUS PUBLIC COMPANY LTD									a		
, 51,STASINOU (AG. PARASKEVI, STROVOLOS) NICOSIA	(0035722)-121883	(0035722)-336258									
170, ALEXANDRAS AVE ATHINA	(210)-6477708	(210)-6477709									
BETA SECURITIES S.A.				a		a		a		a	
, BRAILA & 29 ALEXANDRAS AVE ATHINA	(210)-6478900	(210)-6410139									
BNP PARIBAS SECURITIES SERVICES									a		
94, VAS. SOFIAS AVE ATHINA	(210)-7468500	(210)-7468579									
CAPITAL SECURITIES S.A.				a			a				a
58, MITROPOLEOS STR. ATHINA	(210)-3369700	(210)-3369820									
CFS SECURITIES & INVESTMENT SERVICES S.A.				a			a			a	
3, STADIOU STR. ATHINA	(210)-3360800	(210)-3311854									
CITIBANK INTERNATIONAL PLC (ATHENS BRANCH)									a		
8, OTONOS ATHINA	(210)-9293084	(210)-9293461									
CITIGROUP GLOBAL MARKET LTD				a	a						
, CITIGROUP CENTRE, CANADA SQUARE, CANARY WHART LONDON	002079864000	002079862266									
CREDIT SUISSE SECURITIES (EUROPE) LIMITED				a	a						
, ONE CABOT SQUARE LONDON	+44 20 7888 8888	+44 20 7888 1600									
CYCLOS SECURITIES S.A.				a			a			a	
39, PANEPISTIMIOU STR. ATHINA	(210)-3364300	(210)-3239122									
D.A. TSEKOURAS SEC. S.A.				a							
, PESMAZOGLOY 3	(210)-3214406	(210)-3211997									
DEUTSCHE BANK A.G.				a	a		a				
70, THEODOR-HEUSS-ALLEE FRANKFURT	0049 69 910 00	0049 69 910 34 225									
DYNAMIC SECURITIES				a			a			a	
6 - 10, CHAR. TRIKOUPH STR. ATHINA	(210)-3677700	(210)-3677777									
EL. PETROPOULAKIS SECURITIES S.A.				a			a				a
9, ARISTIDOU STR. ATHINA	(210)-3213928	(210)-3216810									
EUROBANK EQUITIES S.A.				a		a		a		a	
10, FILELLINON STR. ATHINA	(210)-3720000	(210)-3720001									
EUROBANK ERGASIAS S.A.									a		
8, OTHONOS STR. ATHINA	(210)-3337000 (210)-3337969	(210)-3233866 (210)-3245916									
EUROCORP SECURITIES S.A.				a			a			a	
14, FILIKIS ETAIRIAS SQ. ATHINA	(210)-7263500	(210)-7263666									
EUOTRUST BROKERAGE S.A.				a							
13-15, SOPHOCLEOUS STR. ATHINA	(210)-3363100	(210)-3238334									
EUROXX SECURITIES S.A.				a			a			a	
7, PALAIOLOGOU STR. CHALANDRI	(210)-6879400	(210)-6879401									
G.A. PERVANAS SECURITIES & INVESTMENT SERVICES CO S.A.				a							a
7 - 9, SOPHOCLEOUS STR. ATHINA	(210)-3251875	(210)-3210291									
GLOBAL CAPITAL SECURITIES AND FINANCIAL SERVICES LTD				a	a						
5, LEMESOU AVE. LEMESOS CYPRUS	(+35722)-710710	(+35722)-339332									

**Athex & ATHEXCclear Members List**

Member Name	Stock Market			Derivatives Market		ATHEXCclear Member					
	Address	Phone	Fax	Market Member	Remote Member	Market Maker	Proprietary	Market Maker	General Clearing	Direct Clearing	Non Clearing
GUARDIAN TRUST SECURITIES S.A				a			a				a
15, FILELLINON STR. ATHINA	(210)-3220402	(210)-3220498									
HELLENIC AMERICAN SEC. S.A.				a		a	a			a	
6, EVRIPIDOU STR. ATHINA	(210)-3311100	(210)-3215968									
HELLENIC BANK (INVESTMENTS) LTD				a	a						
31, KYRIAKOY MATSI AVE. NICOSIA	(+35722)-500100	(+35722)-500110									
HSBC BANK PLC									a		
109-111, MESOGION AVE ATHINA	(210)-6961507	(210)-6929310									
INDEX SECURITIES S.A.				a							
6, DRAGATSANIOU STR. ATHINA	(210)-3213920	(210)-3213216									
INVESTMENT BANK OF GREECE S.A.				a		a		a	a		
32, AIGEIALIAS MAROUSI	(210) 8173000	(210) 8173101									
24B, KIFISSIAS AVE MAROUSI	(210)-8171800	(210)-8171889									
J. CHR. MAVRIKIS SECURITIES S.A.				a							
5, SOPHOCLEOUS STR. ATHINA	(210)-3213949	(210)-3217767									
KAPPA SECURITIES S.A.				a			a				a
15, VALAORITOU STR. ATHINA	(210)-3610371	(210)-3641002									
KYPROU SECURITIES S.A.											a
26, HALKIDONOS & FIDIPIDOY STR. ATHINA	(210)-8701000	(210)-8701049									
LAIKI FINANCIAL SERVICES LTD				a	a						
26, CLR HOUSE, VIRONOS AVE. NICOSIA	(+35722)-898600	(+35722)-680953									
LEON DEPOLAS SECURITIES S.A.				a			a				a
1, CHR. LADA STR. ATHINA	(210)-3213286	(210)-3211618									
MAGNA TRUST SECURITIES S.A				a							a
9, FIDIOU STR. ATHINA	(210)-3327503	(210)-3327599									
MEGA EQUITY SECURITIES & FINANCIAL SERVICES LTD				a	a		a				
42-44, GRIBA DIGENI AV. NICOSIA	(+35722)-711711	(+35722)-711811									
MERIT SECURITIES S.A				a		a	a			a	
38, VAS. KONSTANTINOY STR. ATHINA	(210)-3671800	(210)-3671830									
MERRILL LYNCH				a	a						
2, KING EDWARD STREET LONDON	(+4420)-79952000	(+4420)-79954525									
MIDAS BROKERAGE S.A.				a							
5, SOPHOCLEOUS STR. ATHINA	(210)-3253203	(210)-3253205									
N. CHRYSOCHOIDIS STOCK BROKERAGE I.S.S.A.				a			a			a	
7 - 9, SOPHOCLEOUS STR. ATHINA	(210)-3213913	(210)-3216115									
NATIONAL BANK OF GREECE S.A.				a			a		a		
86, AILOU STR. ATHINA	(210)-3341000	(210)-3228187									
68, AKADIMIAS STR. ATHINA	(210)-3328817	(210)-3328678									
NBG SECURITIES S.A.				a		a		a			a
68, AKADIMIAS STR. ATHINA	(210)-3328500	(210)-3328565									
NUNTIUS SECURITIES S.A				a							a
6, DRAGATSANIOU STR. ATHINA	(210)-3350599	(210)-3254846									
PANTELAKIS SEC. S.A.				a			a				a
109-111, MESOGION AVE. ATHINA	(210)-6965000	(210)-6929550									
PEGASUS BROKERAGE FIRM S.A				a			a				
17, VALAORITOU STR. ATHINA	(210)-3670700	(210)-3670760									
PIRAEUS BANK S.A.				a		a			a		
4, AMERIKIS STR. ATHINA	(210)-3335000	(210)-3335079									
4, AMERIKIS STR ATHINA	(210)-3335918	(210)-3254207									
PIRAEUS SECURITIES S.A.				a				a		a	
10, STADIOU STR. ATHINA	(210)-3354100	(210)-3233814									
PRELIUM SECURITIES & INVESTMENT SERVICES S.A.				a			a				a
, KIFISSIAS AVE & 1 DAVAKI STR ATHINA	(210)-3677000	(210)-6920403									
PROCHOICE SECURITIES LTD				a	a						
57, SPYROY KYPRIANOY NICOSIA	+357-24-661192	+357-24-662464									
SHARELINK SECURITIES & FINANCIAL SERVICES LTD				a	a		a				
6, ELLINAS HOUSE, THEOTOKI STR. NICOSIA	(+35722)-554200	(+35722)-750852									
SOCIETE GENERALE S.A.				a	a		a				
17, COURS VALMY PUTEAUX - LA DEFENSE PARIS	(+33) 142134754	(+33) 142135697									
240-242, KIFISSIAS AVE ATHINA	(210)-6790161	(210)-6728828									
SOLIDUS SECURITIES S.A				a			a			a	
64, LOUIZIS RIANKOUR STR. ATHINA	(210)-6925500	(210)-6985421									

**Athex & ATHEXClear Members List**

Member Name			Stock Market			Derivatives Market		ATHEXClear Member		
Address	Phone	Fax	Market Member	Remote Member	Market Maker	Proprietary	Market Maker	General Clearing	Direct Clearing	Non Clearing
<b>ST. EM. LAVRENTAKIS SECURITIES S.A.</b>			a			a				a
7 - 9, SOPHOCLEOUS STR. ATHINA										
(210)-3213336 (210)-3246572										
<b>THE CYPRUS INVESTMENT AND SECURITIES CORPORATION LIMITED (CISCO)</b>			a	a						
4, EVROU STR. (EUROLIFE HOUSE) NICOSIA										
(+35722)-881800 (+35722)-881801										
<b>UBS LIMITED</b>			a	a						
1, FINSBURY AVENUE LONDON										
(+4420)-79013333 (+4420)-79012345										
<b>KARAMANOF SECURITIES &amp; INV. SERVICES S.A.</b>			a			a				
2, SQ. ST THEODORON ATHINA										
(210)-3212947 (210)-3217088										

List of Stocks under Market Making operations

Securities	Market Maker	Start Market Making	Stock Category
CYPRUS POPULAR BANK (CR)			Suspension Status
	PIRAEUS SECURITIES S.A.	02/02/2013	
VIOHALCO (CB)			Suspension Status
	ALPHA FINANCE INVESTMENT SERVICES S.A.	11/02/2013	
	EUROBANK EQUITIES S.A.	20/01/2013	
	MERIT SECURITIES S.A.	13/12/2012	
ALPHA BANK (CR)			Main Market
	EUROBANK EQUITIES S.A.	24/10/2012	
	HELLENIC AMERICAN SEC. S.A.	25/07/2014	
	INVESTMENT BANK OF GREECE S.A.	08/01/2013	
	MERIT SECURITIES S.A.	03/09/2013	
	NBG SECURITIES S.A.	15/01/2013	
	PIRAEUS SECURITIES S.A.	28/05/2013	
ALUMIL (CR)			Main Market
	BETA SECURITIES S.A.	18/07/2013	
ATTICA BANK S.A. (CR)			Main Market
	BETA SECURITIES S.A.	02/06/2014	
	EUROBANK EQUITIES S.A.	25/07/2014	
	HELLENIC AMERICAN SEC. S.A.	25/07/2014	
BYTE COMPUTER SA (CR)			Main Market
	MERIT SECURITIES S.A.	04/08/2013	
CC HBC AG (CR)			Main Market
	EUROBANK EQUITIES S.A.	23/10/2013	
	NBG SECURITIES S.A.	29/04/2013	
ELLAKTOR (CR)			Main Market
	EUROBANK EQUITIES S.A.	01/06/2013	
	INVESTMENT BANK OF GREECE S.A.	02/01/2013	
	NBG SECURITIES S.A.	25/06/2013	
ELTECH ANEMOS S.A. (CR)			Main Market
	EUROBANK EQUITIES S.A.	22/07/2014	
ELTON SA (CR)			Main Market
	BETA SECURITIES S.A.	03/09/2013	
EUROBANK ERGASIAS (CR)			Main Market
	ALPHA FINANCE INVESTMENT SERVICES S.A.	08/01/2013	
	EUROBANK EQUITIES S.A.	01/06/2013	
	HELLENIC AMERICAN SEC. S.A.	25/07/2014	
	INVESTMENT BANK OF GREECE S.A.	08/01/2013	
	PIRAEUS SECURITIES S.A.	28/09/2013	
EUROCONSULTANTS S.A. (CR)			Main Market
	EUROBANK EQUITIES S.A.	22/07/2014	
FOLLI FOLLIE (CR)			Main Market
	NBG SECURITIES S.A.	17/02/2014	
FRIGOGLASS SA (CR)			Main Market
	EUROBANK EQUITIES S.A.	27/10/2014	
GEK TERNA (CR)			Main Market
	INVESTMENT BANK OF GREECE S.A.	02/01/2013	
GR. SARANTIS SA (CR)			Main Market
	BETA SECURITIES S.A.	14/05/2013	
HELLENIC EXCHANGES-A.S.E. (CR)			Main Market
	EUROBANK EQUITIES S.A.	01/06/2013	
	HELLENIC AMERICAN SEC. S.A.	01/09/2014	
	INVESTMENT BANK OF GREECE S.A.	02/01/2013	
	NBG SECURITIES S.A.	25/06/2013	
INTRALOT (CR)			Main Market
	EUROBANK EQUITIES S.A.	01/06/2013	
	INVESTMENT BANK OF GREECE S.A.	02/01/2013	
	PIRAEUS SECURITIES S.A.	28/09/2013	
KRETA FARM SA (CR)			Main Market
	EUROBANK EQUITIES S.A.	17/11/2014	
LAMDA DEVELOPMENT SA (CR)			Main Market
	EUROBANK EQUITIES S.A.	08/12/2014	
MARFIN INVESTMENT GROUP (CR)			Main Market
	HELLENIC AMERICAN SEC. S.A.	25/07/2014	
	PIRAEUS SECURITIES S.A.	02/02/2013	
MLS MULTIMEDIA SA (CR)			Main Market
	BETA SECURITIES S.A.	18/07/2013	



List of Stocks under Market Making operations

Securities	Market Maker	Start Market Making	Stock Category
<b>MOTOR OIL (CR)</b>			<b>Main Market</b>
	EUROBANK EQUITIES S.A.	23/10/2012	
	HELLENIC AMERICAN SEC. S.A.	01/09/2014	
	NBG SECURITIES S.A.	17/02/2014	
<b>MYTILINEOS HOLDINGS (CR)</b>			<b>Main Market</b>
	HELLENIC AMERICAN SEC. S.A.	25/07/2014	
	INVESTMENT BANK OF GREECE S.A.	02/01/2013	
	NBG SECURITIES S.A.	25/06/2013	
<b>NATIONAL BANK (CR)</b>			<b>Main Market</b>
	ALPHA FINANCE INVESTMENT SERVICES S.A.	08/01/2013	
	EUROBANK EQUITIES S.A.	24/10/2012	
	HELLENIC AMERICAN SEC. S.A.	25/07/2014	
	INVESTMENT BANK OF GREECE S.A.	08/01/2013	
	MERIT SECURITIES S.A.	03/09/2013	
	NBG SECURITIES S.A.	28/02/2013	
	PIRAEUS SECURITIES S.A.	08/09/2013	
<b>OPAP (CR)</b>			<b>Main Market</b>
	ALPHA FINANCE INVESTMENT SERVICES S.A.	08/01/2013	
	EUROBANK EQUITIES S.A.	24/10/2012	
	HELLENIC AMERICAN SEC. S.A.	25/07/2014	
	INVESTMENT BANK OF GREECE S.A.	08/01/2013	
	NBG SECURITIES S.A.	15/01/2013	
<b>OTE (CR)</b>			<b>Main Market</b>
	ALPHA FINANCE INVESTMENT SERVICES S.A.	08/01/2013	
	EUROBANK EQUITIES S.A.	24/10/2012	
	HELLENIC AMERICAN SEC. S.A.	25/07/2014	
	INVESTMENT BANK OF GREECE S.A.	08/01/2013	
	NBG SECURITIES S.A.	01/12/2012	
	PIRAEUS SECURITIES S.A.	08/09/2013	
<b>PAPOUTSANIS (CR)</b>			<b>Main Market</b>
	BETA SECURITIES S.A.	25/11/2013	
<b>PETROPOULOS PETROS (CR)</b>			<b>Main Market</b>
	BETA SECURITIES S.A.	28/05/2013	
<b>PIRAEUS BANK (CR)</b>			<b>Main Market</b>
	EUROBANK EQUITIES S.A.	23/10/2012	
	HELLENIC AMERICAN SEC. S.A.	25/07/2014	
	INVESTMENT BANK OF GREECE S.A.	08/01/2013	
	MERIT SECURITIES S.A.	16/09/2013	
	NBG SECURITIES S.A.	02/06/2013	
	PIRAEUS SECURITIES S.A.	16/02/2013	
<b>PLAISIO COMPUTERS SA (CR)</b>			<b>Main Market</b>
	BETA SECURITIES S.A.	05/05/2014	
<b>PPC (CR)</b>			<b>Main Market</b>
	ALPHA FINANCE INVESTMENT SERVICES S.A.	08/01/2013	
	EUROBANK EQUITIES S.A.	23/10/2012	
	HELLENIC AMERICAN SEC. S.A.	01/09/2014	
	INVESTMENT BANK OF GREECE S.A.	08/01/2013	
	NBG SECURITIES S.A.	26/03/2013	
	PIRAEUS SECURITIES S.A.	28/09/2013	
<b>PROFILE SA (CR)</b>			<b>Main Market</b>
	EUROBANK EQUITIES S.A.	23/06/2014	
<b>REDS S.A. (CR)</b>			<b>Main Market</b>
	EUROBANK EQUITIES S.A.	05/09/2014	
<b>S.KANAKIS SA (CR)</b>			<b>Main Market</b>
	BETA SECURITIES S.A.	01/10/2013	
<b>TITAN CEMENT (CR)</b>			<b>Main Market</b>
	EUROBANK EQUITIES S.A.	23/10/2012	
	NBG SECURITIES S.A.	17/02/2014	
<b>VIOHALCO SA/NV (CB)</b>			<b>Main Market</b>
	ALPHA FINANCE INVESTMENT SERVICES S.A.	17/02/2014	
	MERIT SECURITIES S.A.	17/03/2014	

Underlying Asset				Derivatives Market														
Price max	Price min	Closing price	change	Delivery Month	Open price	Price max	Price min	Last price	Closing price	Last Bid	Last Ask	Settlement price	Life high	Life low	Trades	Volume	Open Interest	
<b>FTSE/Athex Large Cap</b>				(Trade Unit: 1 Index Point x 5€, Cash Settlement)														
258.52	249.48	251.58	-2.68%	March 2015	259.00	260.00	250.00	255.00	255.00	---	---	251.00	328.00	---	902	7,786	38,616	
				April 2015	252.50	256.00	251.00	253.00	253.00	---	---	251.00	---	280.00	---	8	29	214
				May 2015	---	---	---	---	259.25	---	---	---	---	---	---	---	---	
				June 2015	---	---	---	---	259.00	---	---	244.50	---	273.00	---	---	4	
				September 2015	---	---	---	---	259.00	---	---	---	---	---	---	---	---	
				December 2015	---	---	---	---	260.00	---	---	---	---	---	---	---	---	

Underlying Asset				Derivatives Market													
Price max	Price min	Closing price	change	Delivery Month	Open price	Price max	Price min	Last price	Closing price	Last Bid	Last Ask	Settlement price	Life high	Life low	Trades	Volume	Open Interest
<b>ALPHA BANK (CR)</b> (Contract Size: 100 Securities, Physical Delivery)																	
0.360	0.333	0.333	-10.00%	March 2015	0.360	0.360	0.330	0.332	0.332	---	---	0.337	0.555	---	254	7,343	41,453
				June 2015	0.355	0.355	0.341	0.341	0.341	---	---	0.338	0.405	---	3	23	74
				September 2015	---	---	---	---	0.374	---	---	0.340	0.403	---	---	---	50
				December 2015	---	---	---	---	0.376	---	---	---	---	---	---	---	---
<b>CC HBC AG (CR)</b> (Contract Size: 100 Securities, Physical Delivery)																	
16.15	15.79	15.97	-1.05%	March 2015	15.99	16.10	15.70	15.70	15.70	---	---	15.73	17.10	---	6	13	214
				June 2015	---	---	---	---	16.24	---	---	---	---	---	---	---	---
				September 2015	---	---	---	---	15.97	---	---	---	---	---	---	---	---
				December 2015	---	---	---	---	16.05	---	---	---	---	---	---	---	---
<b>CORINTH PIPEWORKS SA (CR)</b> (Contract Size: 100 Securities, Physical Delivery)																	
1.10	1.04	1.05	-7.08%	March 2015	1.05	1.10	1.05	1.08	1.08	---	---	1.04	1.30	---	7	26	397
				June 2015	---	---	---	---	1.14	---	---	1.26	0.999	---	---	---	75
				September 2015	---	---	---	---	1.14	---	---	---	---	---	---	---	---
				December 2015	---	---	---	---	1.15	---	---	---	---	---	---	---	---
<b>ELLAKTOR (CR)</b> (Contract Size: 100 Securities, Physical Delivery)																	
2.53	2.33	2.42	-1.63%	March 2015	2.38	2.52	2.38	2.43	2.43	---	---	2.43	2.75	---	35	136	1,464
				June 2015	---	---	---	---	2.48	---	---	---	---	---	---	---	---
				September 2015	---	---	---	---	2.49	---	---	---	---	---	---	---	---
				December 2015	---	---	---	---	2.50	---	---	---	---	---	---	---	---
<b>EUROBANK ERGASIAS (CR)</b> (Contract Size: 100 Securities, Physical Delivery)																	
0.135	0.125	0.129	-5.84%	March 2015	0.139	0.139	0.124	0.127	0.127	---	---	0.128	0.267	---	250	10,105	118,286
				June 2015	0.129	0.131	0.129	0.131	0.131	---	---	0.128	0.277	---	2	10	333
				September 2015	---	---	---	---	0.139	---	---	0.131	0.176	---	---	---	---
				December 2015	---	---	---	---	0.139	---	---	---	---	---	---	---	---
<b>EYDAP S.A. (CR)</b> (Contract Size: 100 Securities, Physical Delivery)																	
7.35	6.90	7.10	0.00%	March 2015	7.29	7.29	7.20	7.20	7.20	---	---	7.04	7.38	---	4	6	139
				June 2015	---	---	---	---	6.76	---	---	---	---	---	---	---	---
				September 2015	---	---	---	---	6.75	---	---	---	---	---	---	---	---
				December 2015	---	---	---	---	6.79	---	---	---	---	---	---	---	---
<b>FOLLI FOLLIE (CR)</b> (Contract Size: 100 Securities, Physical Delivery)																	
29.00	28.11	28.59	1.03%	March 2015	28.29	28.92	28.15	28.25	28.25	---	---	28.11	31.00	---	12	31	171
				June 2015	---	---	---	---	28.48	---	---	27.03	23.52	---	---	---	2
				September 2015	---	---	---	---	28.62	---	---	---	---	---	---	---	---
				December 2015	---	---	---	---	28.76	---	---	---	---	---	---	---	---
<b>FRIGOGLASS SA (CR)</b> (Contract Size: 100 Securities, Physical Delivery)																	
1.85	1.74	1.85	1.09%	March 2015	1.77	1.83	1.74	1.83	1.83	---	---	1.83	2.02	---	5	15	348
				June 2015	---	---	---	---	1.84	---	---	---	---	---	---	---	---
				September 2015	---	---	---	---	1.85	---	---	---	---	---	---	---	---
				December 2015	---	---	---	---	1.86	---	---	---	---	---	---	---	---

Underlying Asset				Derivatives Market													
Price max	Price min	Closing price	change	Delivery Month	Open price	Price max	Price min	Last price	Closing price	Last Bid	Last Ask	Settlement price	Life high	Life low	Trades	Volume	Open Interest
<b>GEK TERNA (CR)</b>				(Contract Size: 100 Securities, Physical Delivery)													
2.27	2.11	2.27	1.34%	March 2015	2.17	2.29	2.12	2.26	2.26	---	---	2.28	2.80	---	32	95	7,660
				June 2015	---	---	---	---	2.25	---	---	2.28	---	2.73	---	---	---
				September 2015	---	---	---	---	2.27	---	---	---	---	---	---	---	---
				December 2015	---	---	---	---	2.28	---	---	---	---	---	---	---	---
<b>GRIVALIA PROPERTIES (CR)</b>				(Contract Size: 100 Securities, Physical Delivery)													
8.79	8.21	8.68	-1.36%	March 2015	8.58	8.83	8.50	8.50	8.50	---	---	8.70	8.89	---	12	19	160
				June 2015	---	---	---	---	8.67	---	---	---	---	---	---	---	---
				September 2015	---	---	---	---	8.72	---	---	---	---	---	---	---	---
				December 2015	---	---	---	---	8.76	---	---	---	---	---	---	---	---
<b>HELLENIC EXCHANGES-A.S.E. (CR)</b>				(Contract Size: 100 Securities, Physical Delivery)													
6.30	6.03	6.21	-0.32%	March 2015	6.03	6.30	6.03	6.19	6.19	---	---	6.17	6.80	---	38	95	1,295
				June 2015	---	---	---	---	6.18	---	---	6.06	---	---	---	---	---
				September 2015	---	---	---	---	6.21	---	---	---	---	---	---	---	---
				December 2015	---	---	---	---	6.24	---	---	---	---	---	---	---	---
<b>HELLENIC PETROLEUM (CR)</b>				(Contract Size: 100 Securities, Physical Delivery)													
4.50	4.30	4.46	-0.89%	March 2015	4.35	4.45	4.34	4.40	4.40	---	---	4.39	4.75	---	21	76	4,441
				June 2015	---	---	---	---	4.53	---	---	---	---	---	---	---	---
				September 2015	---	---	---	---	4.40	---	---	---	---	---	---	---	---
				December 2015	---	---	---	---	4.42	---	---	---	---	---	---	---	---
<b>INTRALOT (CR)</b>				(Contract Size: 100 Securities, Physical Delivery)													
1.80	1.75	1.80	0.56%	March 2015	1.75	1.78	1.74	1.74	1.74	---	---	1.78	1.78	---	4	13	394
				June 2015	---	---	---	---	1.80	---	---	---	---	---	---	---	---
				September 2015	---	---	---	---	1.81	---	---	---	---	---	---	---	---
				December 2015	---	---	---	---	1.82	---	---	---	---	---	---	---	---
<b>JUMBO SA (CR)</b>				(Contract Size: 100 Securities, Physical Delivery)													
10.29	9.71	9.90	-2.94%	March 2015	10.09	10.20	9.73	9.96	9.96	---	---	9.79	10.93	---	34	80	599
				June 2015	---	---	---	---	10.26	---	---	---	---	---	---	---	---
				September 2015	---	---	---	---	10.32	---	---	---	---	---	---	---	---
				December 2015	---	---	---	---	10.19	---	---	---	---	---	---	---	---
<b>MARFIN INVESTMENT GROUP (CR)</b>				(Contract Size: 100 Securities, Physical Delivery)													
0.195	0.181	0.181	-8.59%	March 2015	0.190	0.190	0.181	0.181	0.181	---	---	0.182	0.250	---	31	1,257	27,323
				June 2015	---	---	---	---	0.199	---	---	0.187	0.232	---	---	---	16
				September 2015	---	---	---	---	0.200	---	---	---	---	---	---	---	---
				December 2015	---	---	---	---	0.201	---	---	---	---	---	---	---	---
<b>METKA (CR)</b>				(Contract Size: 100 Securities, Physical Delivery)													
9.26	9.00	9.00	-1.64%	March 2015	9.08	9.24	9.06	9.10	9.10	---	---	9.20	10.42	---	30	87	508
				June 2015	---	---	---	---	9.21	---	---	---	---	---	---	---	---
				September 2015	---	---	---	---	8.95	---	---	---	---	---	---	---	---
				December 2015	---	---	---	---	9.00	---	---	---	---	---	---	---	---

Underlying Asset				Derivatives Market														
Price max	Price min	Closing price	change	Delivery Month	Open price	Price max	Price min	Last price	Closing price	Last Bid	Last Ask	Settlement price	Life high	Life low	Trades	Volume	Open Interest	
<b>MOTOR OIL (CR)</b> (Contract Size: 100 Securities, Physical Delivery)																		
7.85	7.60	7.72	-3.50%	March 2015	7.74	7.79	7.60	7.63	7.63	---	---	7.63	7.96	---	26	73	407	
				June 2015	---	---	---	---	8.05	---	---	7.63	---	---	---	---	---	
				September 2015	---	---	---	---	7.89	---	---	---	---	---	---	---	---	
				December 2015	---	---	---	---	7.93	---	---	---	---	---	---	---	---	
<b>MYTILINEOS HOLDINGS (CR)</b> (Contract Size: 100 Securities, Physical Delivery)																		
6.26	6.10	6.20	-0.96%	March 2015	6.13	6.24	6.10	6.17	6.17	---	---	6.17	6.95	---	56	217	3,143	
				June 2015	---	---	---	---	6.30	---	---	6.28	---	6.43	---	---	---	
				September 2015	---	---	---	---	6.33	---	---	6.39	---	5.52	---	---	---	
				December 2015	---	---	---	---	6.36	---	---	---	---	---	---	---	---	
<b>NATIONAL BANK (CR)</b> (Contract Size: 100 Securities, Physical Delivery)																		
1.30	1.19	1.19	-11.19%	March 2015	1.32	1.33	1.18	1.19	1.19	---	---	1.20	1.90	---	768	13,789	31,268	
				June 2015	1.26	1.27	1.25	1.25	1.25	---	---	1.21	---	2.10	---	3	3	85
				September 2015	---	---	---	---	1.36	---	---	1.22	---	1.44	---	---	---	
				December 2015	---	---	---	---	1.36	---	---	---	---	---	---	---	---	
<b>OPAP (CR)</b> (Contract Size: 100 Securities, Physical Delivery)																		
8.65	8.05	8.65	5.10%	March 2015	8.20	8.60	8.10	8.55	8.55	---	---	8.41	10.50	---	136	442	1,950	
				June 2015	8.32	8.74	8.15	8.74	8.74	---	---	8.55	---	9.21	---	3	20	40
				September 2015	---	---	---	---	8.07	---	---	8.43	---	9.38	---	---	---	
				December 2015	---	---	---	---	8.11	---	---	---	---	---	---	---	---	
<b>OTE (CR)</b> (Contract Size: 100 Securities, Physical Delivery)																		
9.15	8.70	9.15	2.81%	March 2015	8.86	9.13	8.72	9.11	9.11	---	---	8.99	10.09	---	286	1,277	7,557	
				June 2015	---	---	---	---	8.96	---	---	9.01	---	10.57	---	---	---	
				September 2015	---	---	---	---	9.00	---	---	9.01	---	9.46	---	---	---	
				December 2015	---	---	---	---	9.05	---	---	---	---	---	---	---	---	
<b>P.P.A. S.A. (CR)</b> (Contract Size: 100 Securities, Physical Delivery)																		
14.85	14.14	14.31	-4.22%	March 2015	14.19	14.50	14.19	14.42	14.42	---	---	14.32	16.30	---	13	41	168	
				June 2015	---	---	---	---	15.03	---	---	---	---	---	---	---	---	
				September 2015	---	---	---	---	14.99	---	---	---	---	---	---	---	---	
				December 2015	---	---	---	---	15.06	---	---	---	---	---	---	---	---	
<b>PIRAEUS BANK (CR)</b> (Contract Size: 100 Securities, Physical Delivery)																		
0.554	0.500	0.501	-11.80%	March 2015	0.569	0.569	0.501	0.505	0.505	---	---	0.507	1.34	---	493	9,223	83,562	
				June 2015	0.526	0.526	0.526	0.526	0.526	---	---	0.503	---	1.00	---	1	1	9
				September 2015	0.525	0.533	0.525	0.532	0.532	---	---	0.502	---	0.733	---	3	450	100
				December 2015	---	---	---	---	0.577	---	---	---	---	---	---	---	---	
<b>PPC (CR)</b> (Contract Size: 100 Securities, Physical Delivery)																		
6.86	6.45	6.51	-7.00%	March 2015	6.81	6.82	6.45	6.50	6.50	---	---	6.49	7.94	---	216	832	2,985	
				June 2015	---	---	---	---	7.04	---	---	6.52	---	8.06	---	---	---	
				September 2015	---	---	---	---	7.05	---	---	---	---	---	---	---	---	
				December 2015	---	---	---	---	7.08	---	---	---	---	---	---	---	---	

Underlying Asset				Derivatives Market													
Price max	Price min	Closing price	change	Delivery Month	Open price	Price max	Price min	Last price	Closing price	Last Bid	Last Ask	Settlement price	Life high	Life low	Trades	Volume	Open Interest
<b>SIDENOR (CR)</b>				(Contract Size: 100 Securities, Physical Delivery)													
0.756	0.711	0.725	-5.84%	March 2015	0.728	0.756	0.713	0.714	0.714	---	---	0.715	0.883	---	12	70	635
				June 2015	---	---	---	---	0.775	---	---	---	---	---	---	---	---
				September 2015	---	---	---	---	0.779	---	---	---	---	---	---	---	---
				December 2015	---	---	---	---	0.783	---	---	---	---	---	---	---	---
<b>TERNA ENERGY (CR)</b>				(Contract Size: 100 Securities, Physical Delivery)													
2.89	2.72	2.74	-5.19%	March 2015	2.80	2.82	2.76	2.80	2.80	---	---	2.80	2.96	---	10	32	761
				June 2015	---	---	---	---	2.85	---	---	3.51	2.47	---	---	---	800
				September 2015	---	---	---	---	2.86	---	---	---	---	---	---	---	---
				December 2015	---	---	---	---	2.88	---	---	---	---	---	---	---	---
<b>TITAN CEMENT (CR)</b>				(Contract Size: 100 Securities, Physical Delivery)													
23.50	21.83	23.50	4.03%	March 2015	22.47	23.35	22.43	23.30	23.30	---	---	22.81	24.50	---	77	179	590
				June 2015	---	---	---	---	22.73	---	---	---	---	---	---	---	---
				September 2015	---	---	---	---	22.74	---	---	---	---	---	---	---	---
				December 2015	---	---	---	---	22.86	---	---	---	---	---	---	---	---
<b>VIOHALCO SA/NV (CB)</b>				(Contract Size: 100 Securities, Physical Delivery)													
3.88	3.65	3.73	-2.87%	March 2015	3.76	3.85	3.68	3.68	3.68	---	---	3.60	4.09	---	23	41	341
				June 2015	---	---	---	---	3.86	---	---	---	---	---	---	---	---
				September 2015	---	---	---	---	3.88	---	---	---	---	---	---	---	---
				December 2015	---	---	---	---	3.90	---	---	---	---	---	---	---	---

## FTSE/Athex Large Cap

(Trade Unit: 1 Index Point x 5€ - Exercise Style: European, Cash Settlement)

Exercise Price	Call Options														Put Options																		
	March 2015							April 2015							Other Months		March 2015							April 2015							Other Months		Exercise Price
	Open price	Price max	Price min	Last price	Closing price	Volume	Open Interest	Open price	Price max	Price min	Last price	Closing price	Volume	Open Interest	Volume	Open Interest	Open price	Price max	Price min	Last price	Closing price	Volume	Open Interest	Open price	Price max	Price min	Last price	Closing price	Volume	Open Interest	Volume	Open Interest	
180	0.00	0.00	0.00	-	81.50	-	24	-	-	-	-	-	-	-	-	0.00	0.00	0.00	-	0.78	-	-	-	-	-	-	-	-	-	-	-	180	
185	0.00	0.00	0.00	-	76.50	-	-	-	-	-	-	-	-	-	-	0.00	0.00	0.00	-	1.10	-	-	-	-	-	-	-	-	-	-	-	185	
190	0.00	0.00	0.00	-	72.00	-	-	-	-	-	-	-	-	-	-	0.00	0.00	0.00	-	1.50	-	-	-	-	-	-	-	-	-	-	-	190	
195	0.00	0.00	0.00	-	67.50	-	-	-	-	-	-	-	-	-	-	0.00	0.00	0.00	-	1.90	-	-	-	-	-	-	-	-	-	-	-	195	
200	0.00	0.00	0.00	-	63.00	-	30	0.00	0.00	0.00	-	67.50	-	-	-	0.00	0.00	0.00	-	2.50	-	1,084	0.00	0.00	0.00	-	6.20	-	-	-	200		
205	0.00	0.00	0.00	-	59.00	-	-	0.00	0.00	0.00	-	63.50	-	-	-	0.00	0.00	0.00	-	3.20	-	1	0.00	0.00	0.00	-	7.40	-	-	-	205		
210	0.00	0.00	0.00	-	55.00	-	-	0.00	0.00	0.00	-	59.50	-	-	-	0.00	0.00	0.00	-	4.10	-	205	0.00	0.00	0.00	-	8.60	-	-	-	210		
215	0.00	0.00	0.00	-	50.50	-	-	0.00	0.00	0.00	-	56.00	-	-	-	0.00	0.00	0.00	-	5.00	-	70	0.00	0.00	0.00	-	10.00	-	-	-	215		
220	0.00	0.00	0.00	-	47.00	-	25	0.00	0.00	0.00	-	52.50	-	-	-	0.00	0.00	0.00	-	6.20	-	13	0.00	0.00	0.00	-	11.50	-	-	-	220		
225	0.00	0.00	0.00	-	43.25	-	22	0.00	0.00	0.00	-	49.50	-	-	-	0.00	0.00	0.00	-	7.50	-	-	0.00	0.00	0.00	-	13.25	-	-	-	225		
230	0.00	0.00	0.00	-	39.75	-	61	0.00	0.00	0.00	-	46.25	-	-	-	0.00	0.00	8.00	8.90	8.90	64	64	0.00	0.00	0.00	-	15.00	-	-	-	230		
235	0.00	0.00	0.00	-	36.50	-	46	0.00	0.00	0.00	-	43.25	-	-	-	0.00	0.00	0.00	-	10.75	-	107	0.00	0.00	0.00	-	17.00	-	-	-	235		
240	0.00	0.00	0.00	-	33.25	-	110	0.00	0.00	0.00	-	40.50	-	-	-	0.00	0.00	13.75	13.75	13.75	1	39	0.00	0.00	0.00	-	19.25	-	-	-	240		
245	0.00	0.00	0.00	-	30.25	-	20	0.00	0.00	0.00	-	37.75	-	-	-	0.00	0.00	14.25	14.25	14.25	1	23	0.00	0.00	0.00	-	21.50	-	-	-	245		
250	0.00	0.00	0.00	-	27.50	-	173	0.00	0.00	0.00	-	35.00	-	-	-	0.00	0.00	0.00	-	16.75	-	93	0.00	0.00	0.00	-	24.00	-	-	-	250		
255	18.00	18.00	18.00	18.00	18.00	7	77	0.00	0.00	0.00	-	32.75	-	-	-	18.00	18.00	18.50	20.00	20.00	30	254	0.00	0.00	0.00	-	26.50	-	-	-	255		
260	0.00	0.00	0.00	-	22.50	-	143	0.00	0.00	0.00	-	30.25	-	-	-	0.00	0.00	0.00	-	21.75	-	113	0.00	0.00	0.00	-	29.00	-	-	-	260		
265	0.00	0.00	0.00	-	20.25	-	66	0.00	0.00	0.00	-	28.25	-	-	-	0.00	0.00	0.00	-	24.50	-	131	0.00	0.00	0.00	-	32.00	-	1	-	265		
270	0.00	0.00	0.00	-	18.25	-	196	0.00	0.00	0.00	-	26.25	-	-	-	0.00	0.00	0.00	-	27.50	-	70	0.00	0.00	0.00	-	34.75	-	-	-	270		
275	0.00	0.00	0.00	-	16.50	-	120	0.00	0.00	0.00	-	24.25	-	-	-	0.00	0.00	0.00	-	30.50	-	-	0.00	0.00	0.00	-	38.00	-	-	-	275		
280	12.00	12.00	9.00	9.00	9.00	50	156	0.00	0.00	0.00	-	22.50	-	-	-	12.00	12.00	0.00	-	34.00	-	-	0.00	0.00	0.00	-	41.00	-	-	-	280		
285	0.00	0.00	0.00	-	13.00	-	2,073	0.00	0.00	0.00	-	20.75	-	40	-	0.00	0.00	0.00	-	37.25	-	1	0.00	0.00	0.00	-	44.50	-	-	-	285		
290	7.50	7.50	7.50	7.50	7.50	7	70	0.00	0.00	0.00	-	19.25	-	-	-	7.50	7.50	0.00	-	40.75	-	-	0.00	0.00	0.00	-	47.75	-	-	-	290		
295	0.00	0.00	0.00	-	10.25	-	30	-	-	-	-	-	-	-	-	0.00	0.00	0.00	-	44.50	-	-	-	-	-	-	-	-	-	-	295		
300	4.90	4.90	4.60	4.70	4.70	501	363	-	-	-	-	-	-	-	-	4.90	4.90	0.00	-	48.50	-	-	-	-	-	-	-	-	-	-	300		
305	0.00	0.00	0.00	-	8.10	-	-	-	-	-	-	-	-	-	-	0.00	0.00	0.00	-	52.50	-	-	-	-	-	-	-	-	-	-	-	305	
310	0.00	0.00	0.00	-	7.20	-	50	-	-	-	-	-	-	-	-	0.00	0.00	0.00	-	56.50	-	4	-	-	-	-	-	-	-	-	-	310	
315	0.00	0.00	0.00	-	6.30	-	-	-	-	-	-	-	-	-	-	0.00	0.00	0.00	-	60.50	-	-	-	-	-	-	-	-	-	-	-	315	
320	0.00	0.00	0.00	-	5.60	-	1,045	-	-	-	-	-	-	-	-	0.00	0.00	0.00	-	64.50	-	-	-	-	-	-	-	-	-	-	-	320	
325	0.00	0.00	0.00	-	4.90	-	-	-	-	-	-	-	-	-	-	0.00	0.00	0.00	-	69.00	-	-	-	-	-	-	-	-	-	-	-	325	
330	0.00	0.00	0.00	-	4.30	-	-	-	-	-	-	-	-	-	-	0.00	0.00	0.00	-	73.50	-	-	-	-	-	-	-	-	-	-	-	330	
335	0.00	0.00	0.00	-	3.70	-	-	-	-	-	-	-	-	-	-	0.00	0.00	0.00	-	78.00	-	-	-	-	-	-	-	-	-	-	-	335	
340	0.00	0.00	0.00	-	3.30	-	-	-	-	-	-	-	-	-	-	0.00	0.00	0.00	-	82.50	-	-	-	-	-	-	-	-	-	-	-	340	
345	0.00	0.00	0.00	-	2.90	-	-	-	-	-	-	-	-	-	-	0.00	0.00	0.00	-	87.00	-	-	-	-	-	-	-	-	-	-	-	345	
350	0.00	0.00	0.00	-	2.50	-	-	-	-	-	-	-	-	-	-	0.00	0.00	0.00	-	91.50	-	-	-	-	-	-	-	-	-	-	-	350	
355	0.00	0.00	0.00	-	2.20	-	-	-	-	-	-	-	-	-	-	0.00	0.00	0.00	-	96.50	-	-	-	-	-	-	-	-	-	-	-	355	

FTSE/Athex Large Cap

(Trade Unit: 1 Index Point x 5€ - Exercise Style: European, Cash Settlement)

Exercise Price	Call Options														Put Options														Exercise Price			
	March 2015						April 2015						Other Months		March 2015						April 2015						Other Months					
	Open price	Price max	Price min	Last price	Closing price	Volume	Open Interest	Open price	Price max	Price min	Last price	Closing price	Volume	Open Interest	Volume	Open Interest	Open price	Price max	Price min	Last price	Closing price	Volume	Open Interest	Open price	Price max	Price min	Last price	Closing price		Volume	Open Interest	Volume
360	0.00	0.00	0.00	-	1.90	-	-	-	-	-	-	-	-	-	-	0.00	0.00	0.00	-	101.00	-	-	-	-	-	-	-	-	-	-	-	360
365	0.00	0.00	0.00	-	1.60	-	-	-	-	-	-	-	-	-	-	0.00	0.00	0.00	-	106.00	-	-	-	-	-	-	-	-	-	-	-	365
370	0.00	0.00	0.00	-	1.40	-	-	-	-	-	-	-	-	-	-	0.00	0.00	0.00	-	111.00	-	-	-	-	-	-	-	-	-	-	-	370
375	0.00	0.00	0.00	-	1.20	-	-	-	-	-	-	-	-	-	-	0.00	0.00	0.00	-	115.00	-	-	-	-	-	-	-	-	-	-	-	375
380	0.00	0.00	0.00	-	1.10	-	-	-	-	-	-	-	-	-	-	0.00	0.00	0.00	-	120.00	-	-	-	-	-	-	-	-	-	-	-	380
385	0.00	0.00	0.00	-	0.91	-	-	-	-	-	-	-	-	-	-	0.00	0.00	0.00	-	125.00	-	-	-	-	-	-	-	-	-	-	-	385
390	0.00	0.00	0.00	-	0.79	-	-	-	-	-	-	-	-	-	-	0.00	0.00	0.00	-	130.00	-	-	-	-	-	-	-	-	-	-	-	390
395	0.00	0.00	0.00	-	0.68	-	-	-	-	-	-	-	-	-	-	0.00	0.00	0.00	-	135.00	-	-	-	-	-	-	-	-	-	-	-	395
400	0.00	0.00	0.00	-	0.58	-	-	-	-	-	-	-	-	-	-	0.00	0.00	0.00	-	140.00	-	-	-	-	-	-	-	-	-	-	-	400
405	0.00	0.00	0.00	-	0.50	-	-	-	-	-	-	-	-	-	-	0.00	0.00	0.00	-	145.00	-	-	-	-	-	-	-	-	-	-	-	405
410	0.00	0.00	0.00	-	0.43	-	-	-	-	-	-	-	-	-	-	0.00	0.00	0.00	-	150.00	-	-	-	-	-	-	-	-	-	-	-	410
415	0.00	0.00	0.00	-	0.37	-	-	-	-	-	-	-	-	-	-	0.00	0.00	0.00	-	154.00	-	-	-	-	-	-	-	-	-	-	-	415
420	0.00	0.00	0.00	-	0.32	-	-	-	-	-	-	-	-	-	-	0.00	0.00	0.00	-	159.00	-	-	-	-	-	-	-	-	-	-	-	420
425	0.00	0.00	0.00	-	0.27	-	-	-	-	-	-	-	-	-	-	0.00	0.00	0.00	-	164.00	-	-	-	-	-	-	-	-	-	-	-	425
430	0.00	0.00	0.00	-	0.23	-	-	-	-	-	-	-	-	-	-	0.00	0.00	0.00	-	169.00	-	-	-	-	-	-	-	-	-	-	-	430
435	0.00	0.00	0.00	-	0.20	-	-	-	-	-	-	-	-	-	-	0.00	0.00	0.00	-	174.00	-	-	-	-	-	-	-	-	-	-	-	435
440	0.00	0.00	0.00	-	0.17	-	-	-	-	-	-	-	-	-	-	0.00	0.00	0.00	-	179.00	-	-	-	-	-	-	-	-	-	-	-	440
445	0.00	0.00	0.00	-	0.15	-	-	-	-	-	-	-	-	-	-	0.00	0.00	0.00	-	184.00	-	-	-	-	-	-	-	-	-	-	-	445
450	0.00	0.00	0.00	-	0.12	-	-	-	-	-	-	-	-	-	-	0.00	0.00	0.00	-	189.00	-	24	-	-	-	-	-	-	-	-	-	450
455	0.00	0.00	0.00	-	0.11	-	-	-	-	-	-	-	-	-	-	0.00	0.00	0.00	-	194.00	-	-	-	-	-	-	-	-	-	-	-	455
Totals:						565	4,900																									
Number of Trades:							8																									



ALPHA BANK (CR)

(Contract Size: 100 Securities, Exercise Style: American, Physical Delivery)

Exercise Price	Call Options														Put Options																		
	March 2015							April 2015							Other Months		March 2015							April 2015							Other Months		Exercise Price
	Open price	Price max	Price min	Last price	Closing price	Volume	Open Interest	Open price	Price max	Price min	Last price	Closing price	Volume	Open Interest	Volume	Open Interest	Open price	Price max	Price min	Last price	Closing price	Volume	Open Interest	Open price	Price max	Price min	Last price	Closing price	Volume	Open Interest	Volume	Open Interest	
0.100	0.000	0.000	0.000	0.270	-	-	0.000	0.000	0.000	0.270	-	-				0.000	0.000	0.000	0.001	-	-	0.000	0.000	0.000	0.001	-	-				0.001		
0.200	0.000	0.000	0.000	0.170	-	-	0.000	0.000	0.000	0.172	-	-				0.000	0.000	0.000	0.001	-	-	0.000	0.000	0.000	0.001	-	-				0.002		
0.300	0.000	0.000	0.000	0.078	-	-	0.000	0.000	0.000	0.090	-	-				0.000	0.000	0.000	0.007	-	-	0.000	0.000	0.000	0.019	-	-				0.003		
0.400	0.000	0.000	0.000	0.022	-	40	0.000	0.000	0.000	0.040	-	-				0.000	0.000	0.000	0.052	-	-	0.000	0.000	0.000	0.069	-	-				0.004		
0.500	0.000	0.000	0.000	0.004	-	-	0.000	0.000	0.000	0.016	-	-				0.000	0.000	0.000	0.134	-	-	0.000	0.000	0.000	0.145	-	-				0.005		
0.600	0.000	0.000	0.000	0.001	-	-	0.000	0.000	0.000	0.006	-	-				0.000	0.000	0.000	0.230	-	-	0.000	0.000	0.000	0.235	-	-				0.006		
0.700	0.000	0.000	0.000	0.001	-	-	0.000	0.000	0.000	0.002	-	-				0.000	0.000	0.000	0.330	-	-	0.000	0.000	0.000	0.331	-	-				0.007		
0.800	0.000	0.000	0.000	0.003	-	-	0.000	0.000	0.000	0.001	-	-				0.000	0.000	0.000	0.430	-	-	0.000	0.000	0.000	0.430	-	-				0.008		
0.900	0.000	0.000	0.000	0.001	-	-	0.000	0.000	0.000	0.001	-	-				0.000	0.000	0.000	0.530	-	-	0.000	0.000	0.000	0.530	-	-				0.009		
1.000	0.000	0.000	0.000	0.001	-	-					-	-				0.000	0.000	0.000	0.630	-	-					-	-				0.010		
1.100	0.000	0.000	0.000	0.001	-	-					-	-				0.000	0.000	0.000	0.730	-	-					-	-				0.011		
Totals:					0	40					0	0	0	0					0	0						0	0	0	0				
Number of Trades:						0						0	0	0					0.00							0	0						

NATIONAL BANK (CR)

(Contract Size: 100 Securities, Exercise Style: American, Physical Delivery)

Call Options																Put Options																			
March 2015								April 2015								Other Months				March 2015								April 2015				Other Months			
Exercise Price	Open price	Price max	Price min	Last price	Closing price	Volume	Open Interest	Open price	Price max	Price min	Last price	Closing price	Volume	Open Interest	Volume	Open Interest	Open price	Price max	Price min	Last price	Closing price	Volume	Open Interest	Open price	Price max	Price min	Last price	Closing price	Volume	Open Interest	Volume	Open Interest	Exercise Price		
0.600	0.000	0.000	0.000	0.741	-	-	-	0.000	0.000	0.000	0.742	-	-	-	-	-	0.000	0.000	0.000	0.001	-	-	-	0.000	0.000	0.000	0.001	-	-	-	-	0.006			
0.700	0.000	0.000	0.000	0.641	-	-	-	0.000	0.000	0.000	0.642	-	-	-	-	-	0.000	0.000	0.000	0.001	-	-	-	0.000	0.000	0.000	0.001	-	-	-	-	0.007			
0.800	0.000	0.000	0.000	0.542	-	-	-	0.000	0.000	0.000	0.543	-	-	-	-	-	0.000	0.000	0.000	0.001	-	-	-	0.000	0.000	0.000	0.001	-	-	-	-	0.008			
0.900	0.000	0.000	0.000	0.445	-	-	-	0.000	0.000	0.000	0.446	-	-	-	-	-	0.000	0.000	0.000	0.004	-	-	-	0.000	0.000	0.000	0.004	-	-	-	-	0.009			
1.000	0.000	0.000	0.000	0.353	-	10	-	0.000	0.000	0.000	0.355	-	-	-	-	-	0.000	0.000	0.000	0.012	-	-	-	0.000	0.000	0.000	0.013	-	-	-	-	0.010			
1.100	0.000	0.000	0.000	0.270	-	-	-	0.000	0.000	0.000	0.272	-	-	-	-	-	0.000	0.000	0.000	0.029	-	10	-	0.000	0.000	0.000	0.029	-	-	-	-	0.011			
1.200	0.000	0.000	0.000	0.199	-	-	-	0.000	0.000	0.000	0.202	-	-	-	-	-	0.000	0.000	0.000	0.058	-	-	-	0.000	0.000	0.000	0.059	-	-	-	-	0.012			
1.300	0.000	0.000	0.000	0.142	-	20	-	0.000	0.000	0.000	0.144	-	-	-	-	-	0.000	0.000	0.000	0.100	-	310	-	0.000	0.000	0.000	0.101	-	-	-	-	0.013			
1.400	0.000	0.000	0.000	0.097	-	-	-	0.000	0.000	0.000	0.100	-	-	-	-	-	0.000	0.000	0.000	0.155	-	-	-	0.000	0.000	0.000	0.156	-	-	-	-	0.014			
1.500	0.000	0.000	0.000	0.064	-	-	-	0.000	0.000	0.000	0.067	-	-	-	-	-	0.000	0.000	0.000	0.223	-	-	-	0.000	0.000	0.000	0.223	-	-	-	-	0.015			
1.600	0.000	0.000	0.000	0.042	-	-	-	0.000	0.000	0.000	0.043	-	-	-	-	-	0.000	0.000	0.000	0.300	-	-	-	0.000	0.000	0.000	0.300	-	-	-	-	0.016			
1.700	0.000	0.000	0.000	0.026	-	-	-	0.000	0.000	0.000	0.028	-	-	-	-	-	0.000	0.000	0.000	0.385	-	-	-	0.000	0.000	0.000	0.384	-	-	-	-	0.017			
1.800	0.000	0.000	0.000	0.016	-	-	-	0.000	0.000	0.000	0.017	-	-	-	-	-	0.000	0.000	0.000	0.475	-	-	-	0.000	0.000	0.000	0.474	-	-	-	-	0.018			
1.900	0.000	0.000	0.000	0.010	-	-	-	0.000	0.000	0.000	0.011	-	-	-	-	-	0.000	0.000	0.000	0.568	-	-	-	0.000	0.000	0.000	0.567	-	-	-	-	0.019			
2.000	0.000	0.000	0.000	0.006	-	-	-	-	-	-	-	-	-	-	-	-	0.000	0.000	0.000	0.664	-	-	-	-	-	-	-	-	-	-	-	0.020			
2.200	0.000	0.000	0.000	0.002	-	-	-	-	-	-	-	-	-	-	-	-	0.000	0.000	0.000	0.861	-	-	-	-	-	-	-	-	-	-	-	0.022			
2.400	0.000	0.000	0.000	0.001	-	-	-	-	-	-	-	-	-	-	-	-	0.000	0.000	0.000	1.06	-	-	-	-	-	-	-	-	-	-	-	0.024			
2.600	0.000	0.000	0.000	0.001	-	-	-	-	-	-	-	-	-	-	-	-	0.000	0.000	0.000	1.26	-	-	-	-	-	-	-	-	-	-	-	0.026			
2.800	0.000	0.000	0.000	0.001	-	-	-	-	-	-	-	-	-	-	-	-	0.000	0.000	0.000	1.46	-	-	-	-	-	-	-	-	-	-	-	0.028			
3.000	0.000	0.000	0.000	0.004	-	-	-	-	-	-	-	-	-	-	-	-	0.000	0.000	0.000	1.66	-	-	-	-	-	-	-	-	-	-	-	0.030			
3.200	0.000	0.000	0.000	0.002	-	-	-	-	-	-	-	-	-	-	-	-	0.000	0.000	0.000	1.86	-	-	-	-	-	-	-	-	-	-	-	0.032			
3.400	0.000	0.000	0.000	0.001	-	-	-	-	-	-	-	-	-	-	-	-	0.000	0.000	0.000	2.06	-	-	-	-	-	-	-	-	-	-	-	0.034			
3.600	0.000	0.000	0.000	0.001	-	-	-	-	-	-	-	-	-	-	-	-	0.000	0.000	0.000	2.26	-	-	-	-	-	-	-	-	-	-	-	0.036			
3.800	0.000	0.000	0.000	0.001	-	-	-	-	-	-	-	-	-	-	-	-	0.000	0.000	0.000	2.46	-	-	-	-	-	-	-	-	-	-	-	0.038			
4.000	0.000	0.000	0.000	0.001	-	-	-	-	-	-	-	-	-	-	-	-	0.000	0.000	0.000	2.66	-	-	-	-	-	-	-	-	-	-	-	0.040			
4.400	0.000	0.000	0.000	0.001	-	-	-	-	-	-	-	-	-	-	-	-	0.000	0.000	0.000	3.06	-	-	-	-	-	-	-	-	-	-	-	0.044			
4.800	0.000	0.000	0.000	0.001	-	-	-	-	-	-	-	-	-	-	-	-	0.000	0.000	0.000	3.46	-	-	-	-	-	-	-	-	-	-	-	0.048			
5.200	0.000	0.000	0.000	0.001	-	-	-	-	-	-	-	-	-	-	-	-	0.000	0.000	0.000	3.86	-	-	-	-	-	-	-	-	-	-	-	0.052			
5.600	0.000	0.000	0.000	0.001	-	-	-	-	-	-	-	-	-	-	-	-	0.000	0.000	0.000	4.26	-	-	-	-	-	-	-	-	-	-	-	0.056			
Totals:						0	30						0	0	0	0						0	320					0	0	0	0				
Number of Trades:						0							0		0							0.00						0		0					

OPAP (CR)

(Contract Size: 100 Securities, Exercise Style: American, Physical Delivery)

Exercise Price	Call Options														Put Options																		
	March 2015							April 2015							Other Months		March 2015							April 2015							Other Months		Exercise Price
	Open price	Price max	Price min	Last price	Closing price	Volume	Open Interest	Open price	Price max	Price min	Last price	Closing price	Volume	Open Interest	Volume	Open Interest	Open price	Price max	Price min	Last price	Closing price	Volume	Open Interest	Open price	Price max	Price min	Last price	Closing price	Volume	Open Interest	Volume	Open Interest	
6.000	0.000	0.000	0.000	2.25	-	-	0.000	0.000	0.000	2.33	-	-				0.000	0.000	0.000	0.017	-	-	0.000	0.000	0.000	0.083	-	-				0.060		
6.400	0.000	0.000	0.000	1.88	-	-	0.000	0.000	0.000	1.99	-	-				0.000	0.000	0.000	0.042	-	-	0.000	0.000	0.000	0.146	-	-				0.064		
6.800	0.000	0.000	0.000	1.53	-	-	0.000	0.000	0.000	1.68	-	-				0.000	0.000	0.000	0.091	-	-	0.000	0.000	0.000	0.234	-	-				0.068		
7.200	0.000	0.000	0.000	1.21	-	-	0.000	0.000	0.000	1.40	-	-				0.000	0.000	0.000	0.174	-	-	0.000	0.000	0.000	0.349	-	-				0.072		
7.600	0.000	0.000	0.000	0.934	-	-	0.000	0.000	0.000	1.15	-	-				0.000	0.000	0.000	0.295	-	-	0.000	0.000	0.000	0.501	-	-				0.076		
8.000	0.000	0.000	0.000	0.699	-	-	0.000	0.000	0.000	0.939	-	-				0.000	0.000	0.000	0.460	-	-	0.000	0.000	0.000	0.688	-	-				0.080		
8.400	0.000	0.000	0.000	0.509	-	-	0.000	0.000	0.000	0.754	-	-				0.000	0.000	0.000	0.670	-	-	0.000	0.000	0.000	0.903	-	-				0.084		
8.800	0.000	0.000	0.000	0.360	-	-	0.000	0.000	0.000	0.595	-	-				0.000	0.000	0.000	0.921	-	-	0.000	0.000	0.000	1.14	-	-				0.088		
9.200	0.000	0.000	0.000	0.247	-	-	0.000	0.000	0.000	0.474	-	-				0.000	0.000	0.000	1.21	-	-	0.000	0.000	0.000	1.42	-	-				0.092		
9.600	0.000	0.000	0.000	0.165	-	-	0.000	0.000	0.000	0.367	-	-				0.000	0.000	0.000	1.53	-	-	0.000	0.000	0.000	1.72	-	-				0.096		
10.000	0.000	0.000	0.000	0.108	-	-	0.000	0.000	0.000	0.285	-	-				0.000	0.000	0.000	1.87	-	-	0.000	0.000	0.000	2.03	-	-				0.100		
11.000	0.000	0.000	0.000	0.035	-	-	0.000	0.000	0.000	0.143	-	-				0.000	0.000	0.000	2.80	-	-	0.000	0.000	0.000	2.89	-	-				0.110		
12.000	0.000	0.000	0.000	0.010	-	-	0.000	0.000	0.000	0.072	-	-				0.000	0.000	0.000	3.77	-	-	0.000	0.000	0.000	3.82	-	-				0.120		
13.000	0.000	0.000	0.000	0.002	-	-					-	-				0.000	0.000	0.000	4.77	-	-					-	-				0.130		
14.000	0.000	0.000	0.000	0.001	-	-					-	-				0.000	0.000	0.000	5.77	-	-					-	-				0.140		
15.000	0.000	0.000	0.000	0.002	-	-					-	-				0.000	0.000	0.000	6.77	-	-					-	-				0.150		
16.000	0.000	0.000	0.000	0.001	-	-					-	-				0.000	0.000	0.000	7.77	-	-					-	-				0.160		
17.000					-	-					-	-								-	-					-	-				0.170		
18.000					-	-					-	-								-	-					-	-				0.180		
Totals:					0	0					0	0		0	0					0	0					0	0		0	0			
Number of Trades:					0					0		0							0.00							0			0				

OTE (CR)

(Contract Size: 100 Securities, Exercise Style: American, Physical Delivery)

Exercise Price	Call Options														Put Options																		
	March 2015							April 2015							Other Months		March 2015							April 2015							Other Months		Exercise Price
	Open price	Price max	Price min	Last price	Closing price	Volume	Open Interest	Open price	Price max	Price min	Last price	Closing price	Volume	Open Interest	Volume	Open Interest	Open price	Price max	Price min	Last price	Closing price	Volume	Open Interest	Open price	Price max	Price min	Last price	Closing price	Volume	Open Interest	Volume	Open Interest	
6.000						-	-							-	-								-	-									
6.400	0.000	0.000	0.000		2.51	-	-	0.000	0.000	0.000		2.57	-	-			0.000	0.000	0.000		0.006	-	-	0.000	0.000	0.000		0.053	-	-			0.064
6.800	0.000	0.000	0.000		2.13	-	-	0.000	0.000	0.000		2.22	-	-			0.000	0.000	0.000		0.018	-	-	0.000	0.000	0.000		0.098	-	-			0.068
7.200	0.000	0.000	0.000		1.75	-	-	0.000	0.000	0.000		1.89	-	-			0.000	0.000	0.000		0.046	-	20	0.000	0.000	0.000		0.168	-	-			0.072
7.600	0.000	0.000	0.000		1.41	-	-	0.000	0.000	0.000		1.58	-	-			0.000	0.000	0.000		0.099	-	-	0.000	0.000	0.000		0.265	-	-			0.076
8.000	0.000	0.000	0.000		1.10	-	-	0.000	0.000	0.000		1.31	-	-			0.000	0.000	0.000		0.186	-	-	0.000	0.000	0.000		0.391	-	-			0.080
8.400	0.000	0.000	0.000		0.824	-	5	0.000	0.000	0.000		1.07	-	-			0.000	0.000	0.000		0.315	-	-	0.000	0.000	0.000		0.546	-	-			0.084
8.800	0.000	0.000	0.000		0.600	-	50	0.000	0.000	0.000		0.862	-	-			0.000	0.000	0.000		0.490	-	-	0.000	0.000	0.000		0.740	-	-			0.088
9.200	0.000	0.000	0.000		0.422	-	-	0.000	0.000	0.000		0.690	-	-			0.000	0.000	0.000		0.712	-	-	0.000	0.000	0.000		0.967	-	-			0.092
9.600	0.000	0.000	0.000		0.288	-	-	0.000	0.000	0.000		0.541	-	-			0.000	0.000	0.000		0.978	-	-	0.000	0.000	0.000		1.22	-	-			0.096
10.000	0.000	0.000	0.000		0.190	-	-	0.000	0.000	0.000		0.421	-	-			0.000	0.000	0.000		1.28	-	-	0.000	0.000	0.000		1.50	-	-			0.100
11.000	0.000	0.000	0.000		0.058	-	-	0.000	0.000	0.000		0.217	-	-			0.000	0.000	0.000		2.15	-	-	0.000	0.000	0.000		2.29	-	-			0.110
12.000	0.000	0.000	0.000		0.015	-	-	0.000	0.000	0.000		0.106	-	-			0.000	0.000	0.000		3.11	-	-	0.000	0.000	0.000		3.18	-	-			0.120
13.000	0.000	0.000	0.000		0.004	-	-						-	-			0.000	0.000	0.000		4.10	-	-										0.130
14.000	0.000	0.000	0.000		0.001	-	-						-	-			0.000	0.000	0.000		5.10	-	-										0.140
15.000	0.000	0.000	0.000		0.001	-	-						-	-			0.000	0.000	0.000		6.10	-	-										0.150
16.000	0.000	0.000	0.000		0.001	-	-						-	-			0.000	0.000	0.000		7.10	-	-										0.160
Totals:						0	55						0	0	0	0					0	20						0	0	0	0		
Number of Trades:						0							0		0						0.00							0		0			

PIRAEUS BANK (CR)

(Contract Size: 100 Securities, Exercise Style: American, Physical Delivery)

Exercise Price	Call Options														Put Options																			
	March 2015							April 2015							Other Months		March 2015							April 2015							Other Months		Exercise Price	
	Open price	Price max	Price min	Last price	Closing price	Volume	Open Interest	Open price	Price max	Price min	Last price	Closing price	Volume	Open Interest	Volume	Open Interest	Open price	Price max	Price min	Last price	Closing price	Volume	Open Interest	Open price	Price max	Price min	Last price	Closing price	Volume	Open Interest	Volume	Open Interest		
0.200						-	-							-	-																			
0.300	0.000	0.000	0.000		0.268	-	-	0.000	0.000	0.000		0.271	-	-			0.000	0.000	0.000		0.002	-	-	0.000	0.000	0.000		0.002	-	-			0.003	
0.400	0.000	0.000	0.000		0.171	-	-	0.000	0.000	0.000		0.182	-	-			0.000	0.000	0.000		0.003	-	-	0.000	0.000	0.000		0.013	-	-			0.004	
0.500	0.000	0.000	0.000		0.090	-	-	0.000	0.000	0.000		0.113	-	-			0.000	0.000	0.000		0.021	-	-	0.000	0.000	0.000		0.044	-	-			0.005	
0.600	0.000	0.000	0.000		0.039	-	71	0.000	0.000	0.000		0.066	-	-			0.000	0.000	0.000		0.070	-	-	0.000	0.000	0.000		0.097	-	-			0.006	
0.700	0.000	0.000	0.000		0.014	-	9	0.000	0.000	0.000		0.037	-	-			0.000	0.000	0.000		0.145	-	-	0.000	0.000	0.000		0.167	-	-			0.007	
0.800	0.000	0.000	0.000		0.004	-	-	0.000	0.000	0.000		0.020	-	-			0.000	0.000	0.000		0.236	-	-	0.000	0.000	0.000		0.251	-	-			0.008	
0.900	0.000	0.000	0.000		0.001	-	-	0.000	0.000	0.000		0.011	-	-			0.000	0.000	0.000		0.333	-	-	0.000	0.000	0.000		0.341	-	-			0.009	
1.000	0.000	0.000	0.000		0.002	-	-	0.000	0.000	0.000		0.006	-	-			0.000	0.000	0.000		0.432	-	-	0.000	0.000	0.000		0.436	-	-			0.010	
1.100	0.000	0.000	0.000		0.001	-	-	0.000	0.000	0.000		0.003	-	-			0.000	0.000	0.000		0.532	-	-	0.000	0.000	0.000		0.534	-	-			0.011	
1.200	0.000	0.000	0.000		0.001	-	-	0.000	0.000	0.000		0.002	-	-			0.000	0.000	0.000		0.632	-	-	0.000	0.000	0.000		0.632	-	-			0.012	
1.300	0.000	0.000	0.000		0.004	-	-	0.000	0.000	0.000		0.001	-	-			0.000	0.000	0.000		0.732	-	-	0.000	0.000	0.000		0.732	-	-			0.013	
1.400	0.000	0.000	0.000		0.002	-	-							-	-			0.000	0.000	0.000		0.832	-	-								0.014		
1.500	0.000	0.000	0.000		0.001	-	-							-	-			0.000	0.000	0.000		0.932	-	-								0.015		
1.600	0.000	0.000	0.000		0.001	-	-							-	-			0.000	0.000	0.000		1.03	-	-								0.016		
1.700	0.000	0.000	0.000		0.009	-	-							-	-			0.000	0.000	0.000		1.13	-	-								0.017		
1.800	0.000	0.000	0.000		0.006	-	-							-	-			0.000	0.000	0.000		1.23	-	-								0.018		
1.900	0.000	0.000	0.000		0.004	-	-							-	-			0.000	0.000	0.000		1.33	-	-								0.019		
2.000	0.000	0.000	0.000		0.003	-	-							-	-			0.000	0.000	0.000		1.43	-	-								0.020		
2.200	0.000	0.000	0.000		0.001	-	-							-	-			0.000	0.000	0.000		1.63	-	-								0.022		
2.400	0.000	0.000	0.000		0.001	-	-							-	-			0.000	0.000	0.000		1.83	-	-								0.024		
2.600	0.000	0.000	0.000		0.001	-	-							-	-			0.000	0.000	0.000		2.03	-	-								0.026		
2.800	0.000	0.000	0.000		0.001	-	-							-	-			0.000	0.000	0.000		2.23	-	-								0.028		
Totals:						0	80							0	0																		0	
Number of Trades:							0								0																		0	

PPC (CR)

(Contract Size: 100 Securities, Exercise Style: American, Physical Delivery)

Exercise Price	Call Options														Put Options																			
	March 2015						April 2015						Other Months		March 2015						April 2015						Other Months		Exercise Price					
	Open price	Price max	Price min	Last price	Closing price	Volume	Open Interest	Open price	Price max	Price min	Last price	Closing price	Volume	Open Interest	Volume	Open Interest	Open price	Price max	Price min	Last price	Closing price	Volume	Open Interest	Open price	Price max	Price min	Last price	Closing price		Volume	Open Interest	Volume	Open Interest	
3.600						-	0.000	0.000	0.000		3.41	-	-									-	-	0.000	0.000	0.000		0.001		-	-			0.036
3.800	0.000	0.000	0.000		3.20	-	0.000	0.000	0.000		3.21	-	-			0.000	0.000	0.000		0.001	-	-		0.000	0.000	0.000		0.002	-	-			0.038	
4.000	0.000	0.000	0.000		3.00	-	0.000	0.000	0.000		3.01	-	-			0.000	0.000	0.000		0.002	-	-		0.000	0.000	0.000		0.003	-	-			0.040	
4.400	0.000	0.000	0.000		2.61	-	0.000	0.000	0.000		2.62	-	-			0.000	0.000	0.000		0.011	-	-		0.000	0.000	0.000		0.011	-	-			0.044	
4.800	0.000	0.000	0.000		2.21	-	0.000	0.000	0.000		2.24	-	-			0.000	0.000	0.000		0.003	-	-		0.000	0.000	0.000		0.030	-	-			0.048	
5.200	0.000	0.000	0.000		1.82	-	0.000	0.000	0.000		1.88	-	-			0.000	0.000	0.000		0.013	-	-		0.000	0.000	0.000		0.068	-	-			0.052	
5.600	0.000	0.000	0.000		1.45	-	0.000	0.000	0.000		1.55	-	-			0.000	0.000	0.000		0.040	-	-		0.000	0.000	0.000		0.132	-	-			0.056	
6.000	0.000	0.000	0.000		1.10	-	5	0.000	0.000	0.000		1.25	-	-			0.000	0.000	0.000		0.098	-	20		0.000	0.000	0.000		0.230	-	-			0.060
6.400	0.000	0.000	0.000		0.805	-	-	0.000	0.000	0.000		0.984	-	-			0.000	0.000	0.000		0.198	-	-		0.000	0.000	0.000		0.368	-	-			0.064
6.800	0.000	0.000	0.000		0.564	-	-	0.000	0.000	0.000		0.763	-	-			0.000	0.000	0.000		0.356	-	-		0.000	0.000	0.000		0.545	-	-			0.068
7.200	0.000	0.000	0.000		0.376	-	-	0.000	0.000	0.000		0.580	-	-			0.000	0.000	0.000		0.568	-	-		0.000	0.000	0.000		0.762	-	-			0.072
7.600	0.000	0.000	0.000		0.238	-	-	0.000	0.000	0.000		0.432	-	-			0.000	0.000	0.000		0.830	-	-		0.000	0.000	0.000		1.01	-	-			0.076
8.000	0.000	0.000	0.000		0.144	-	-	0.000	0.000	0.000		0.314	-	-			0.000	0.000	0.000		1.14	-	-		0.000	0.000	0.000		1.30	-	-			0.080
8.400	0.000	0.000	0.000		0.084	-	-	0.000	0.000	0.000		0.231	-	-			0.000	0.000	0.000		1.48	-	-		0.000	0.000	0.000		1.61	-	-			0.084
8.800	0.000	0.000	0.000		0.047	-	-						-	-			0.000	0.000	0.000		1.84	-	-							-	-			0.088
9.200	0.000	0.000	0.000		0.026	-	-						-	-			0.000	0.000	0.000		2.22	-	-							-	-			0.092
9.600	0.000	0.000	0.000		0.014	-	-						-	-			0.000	0.000	0.000		2.61	-	-							-	-			0.096
10.000	0.000	0.000	0.000		0.007	-	-						-	-			0.000	0.000	0.000		3.00	-	-							-	-			0.100
11.000	0.000	0.000	0.000		0.001	-	-						-	-			0.000	0.000	0.000		4.00	-	-							-	-			0.110
12.000	0.000	0.000	0.000		0.001	-	-						-	-			0.000	0.000	0.000		5.00	-	-							-	-			0.120
13.000	0.000	0.000	0.000		0.004	-	-						-	-			0.000	0.000	0.000		6.00	-	-							-	-			0.130
14.000	0.000	0.000	0.000		0.001	-	-						-	-			0.000	0.000	0.000		7.00	-	-							-	-			0.140
15.000	0.000	0.000	0.000		0.001	-	-						-	-			0.000	0.000	0.000		8.00	-	-							-	-			0.150
16.000						-	-						-	-								-	-							-	-			0.160
Totals:						0	5						0	0	0	0					0	20							0	0	0	0		
Number of Trades:						0							0		0						0.00								0		0			

Lending Products	Underlying Title	Multilateral Transactions[1]					Bilateral Transactions[2]		Stock Borrowing through OTC (volume)[3]
		Open Interest[5]	Volume(Offered)	Average Weighted	Transactions volume	Average Weighted	Transactions Volume	Average Weighted	Transactions Volume
AEGNBOR	AEGEAN AIRLINES (CR)	248	19,974	5.31%	---	---	---	---	1
ALPHABOR	ALPHA BANK (CR)	1,271,885	3,896,563	5.31%	---	---	---	---	46,198,319
AETFBOR	ALPHA ETF FTSE Athex Large Cap	---	---	---	---	---	---	---	---
ALMYBOR	ALUMIL (CR)	---	---	---	---	---	---	---	---
IATRBOR	ATHENS MEDICAL CENTER SA (CR)	---	38,078	5.31%	---	---	---	---	---
TATTBOR	ATTICA BANK S.A. (CR)	---	162,569	5.31%	---	---	---	---	---
OTOELBOR	AUTOHELLAS SA (CR)	---	958	5.31%	---	---	---	---	---
BIOKABOR	BIOKARPET S.A.(CR)	---	---	---	---	---	---	---	---
EEEBOR	CC HBC AG (CR)	5,841	---	---	---	---	---	---	74,576
CENTRBOR	CENTRIC HOLDINGS (CR)	---	16,000	5.31%	---	---	---	---	---
SOLKBOR	CORINTH PIPEWORKS SA (CR)	800	1,360	3.86%	---	---	---	---	---
PLAKRBOR	CRETE PLASTICS SA (CR)	---	---	---	---	---	---	---	---
DROMEBOB	DROMEAS SA (CR)	---	---	---	---	---	---	---	---
ELGEBOR	ELGEKA SA (CR)	---	---	---	---	---	---	---	---
ELLAKTORBOR	ELLAKTOR (CR)	49,316	31,186	5.31%	7,197	4.01%	---	---	---
ELBABOR	ELVAL SA. (CB)	---	28,624	5.31%	---	---	---	---	---
EUROBBOR	EUROBANK ERGASIAS (CR)	302,445	183,785	3.86%	---	---	---	---	48,776,124
EUPICBOR	EUROPEAN RELIANCE INSUR. (CR)	---	---	---	---	---	---	---	---
EYDAPBOR	EYDAP S.A. (CR)	13,699	---	---	---	---	---	---	17,256
FGEBOR	F.G. EUROPE S.A. (CR)	---	---	---	---	---	---	---	---
FFGRPBOR	FOLLI FOLLIE (CR)	21,141	37,245	5.31%	---	---	---	---	991,927
FOYRKBOR	FOURLIS (CR)	---	3,128	5.31%	---	---	---	---	3,850
FRIGOBOR	FRIGOGLOSS SA (CR)	2,100	1,750	5.31%	---	---	---	---	---
GEKTERNABOR	GEK TERNA (CR)	5,974	16,964	5.31%	---	---	---	---	---
SARBOR	GR. SARANTIS SA (CR)	---	---	---	---	---	---	---	---
EUPROBOR	GRIVALIA PROPERTIES (CR)	12,067	25,831	5.31%	---	---	---	---	47,406
XAKOBOR	HALKOR SA (CB)	---	48,551	5.31%	---	---	---	---	---
EXAEBOR	HELLENIC EXCHANGES-A.S.E. (CR)	69,196	405,284	5.31%	---	---	---	---	130,000
ELPEBOR	HELLENIC PETROLEUM (CR)	61,434	149,265	3.31%	---	---	---	---	54,771
HYGEIABOR	HYGEIA SA (CR)	---	48,700	5.31%	---	---	---	---	---
IASOBOR	IASO SA (CR)	---	21,721	5.31%	---	---	---	---	---

## Stock Lending Notes

[1] - Multilateral contracts Lending or Borrowing as per Methods 8-1, 8-2 and 8-3-3 (According to ATHEX BoD Resolution No.17)

[2] - Bilateral Contracts Lending or Borrowing as per Methods 8-3-1 and 8-3-2 (According to ATHEX BoD Resolution No.20 )

[3] - The information concerning OTC Stock Borrowing Transactions is based on the statements of the Dematerialised Securities System (DSS) operators involved and refers to volumes that have been cleared and registered up until the previous working day.

[4] - Average Price (Volume weighted)

[5] - The Data concerning Open Interest before the start of trading session

Lending Products	Underlying Title	Multilateral Transactions[1]					Bilateral Transactions[2]		Stock Borrowing through OTC (volume)[3]
		Open Interest[5]	Volume(Offered)	Average Weighted	Transactions volume	Average Weighted	Transactions Volume	Average Weighted	Transactions Volume
IKTINBOR	IKTINOS HELLAS SA (CR)	---	---	---	---	---	---	---	
LYKBOR	INFORM P. LYKOS SA (CR)	---	483	5.31%	---	---	---	---	
INKATBOR	INTRACOM CONSTR. (CR)	---	---	---	---	---	---	---	
INTRKBOR	INTRACOM HOLDINGS (CR)	---	105,450	5.31%	---	---	---	---	
INLOTBOR	INTRALOT (CR)	36,607	44,594	3.31%	---	---	---	148,000	
AVAXBOR	J & P - AVAX SA (CR)	---	20,175	5.31%	---	---	---	---	
BELABOR	JUMBO SA (CR)	67,665	96,832	5.31%	3,141	3.14%	---	3,293	
KARTZBOR	KARATZIS SA (CR)	---	---	---	---	---	---	---	
KLEMBOR	KLEEMAN HELLAS SA (CR)	---	17,510	5.31%	---	---	---	---	
KRIBOR	KRI-KRI S.A. (CR)	---	46,268	5.31%	---	---	---	---	
LAMDABOR	LAMDA DEVELOPMENT SA (CR)	---	---	---	---	---	---	10,377	
MIGBOR	MARFIN INVESTMENT GROUP (CR)	47,243	109,793	5.31%	---	---	---	744,474	
METKKBOR	METKA (CR)	17,237	4,032	5.31%	---	---	---	500	
MLSBOR	MLS MULTIMEDIA SA (CR)	---	7,920	5.31%	---	---	---	---	
MOHBOR	MOTOR OIL (CR)	56,478	22,286	5.31%	---	---	---	34,600	
MYTILBOR	MYTILINEOS HOLDINGS (CR)	40,149	146,618	3.31%	---	---	---	---	
ETEBOR	NATIONAL BANK (CR)	286,297	219,038	3.31%	---	---	---	2,190,490	
ETFASEBOR	NBGAM ETF	---	---	---	---	---	---	---	
ETFGT30PBOR	NBGAM ETF GREECE & TURKEY 30	---	---	---	---	---	---	---	
OPAPBOR	OPAP (CR)	59,189	55,975	5.31%	---	---	---	696,997	
HTOBOR	OTE (CR)	10,100	29,568	5.31%	---	---	100	0.01%	306,817
PPABOR	P.P.A. S.A. (CR)	74	---	---	---	---	---	151	
PAPBOR	PAPOUTSANIS (CR)	---	---	---	---	---	---	---	
PETROBOR	PETROPOULOS PETROS (CR)	---	---	---	---	---	---	---	
TPEIRBOR	PIRAEUS BANK (CR)	201,094	4,516	5.31%	---	---	---	34,811,810	
PLAISBOR	PLAISIO COMPUTERS SA (CR)	---	---	---	---	---	---	---	
PPCBOR	PPC (CR)	70,518	33,587	3.86%	---	---	---	712,811	
PROFBOR	PROFILE SA (CR)	---	---	---	---	---	---	---	
QUALBOR	QUALITY & RELIABILITY SA (CR)	---	---	---	---	---	---	---	
QUESTBOR	QUEST HOLDINGS (CR)	---	822	5.31%	---	---	---	---	
SIDEBOR	SIDENOR (CR)	2,000	27,566	5.31%	---	---	---	---	

## Stock Lending Notes

[1] - Multilateral contracts Lending or Borrowing as per Methods 8-1, 8-2 and 8-3-3 (According to ATHEX BoD Resolution No.17)

[2] - Bilateral Contracts Lending or Borrowing as per Methods 8-3-1 and 8-3-2 (According to ATHEX BoD Resolution No.20 )

[3] - The information concerning OTC Stock Borrowing Transactions is based on the statements of the Dematerialised Securities System (DSS) operators involved and refers to volumes that have been cleared and registered up until the previous working day.

[4] - Average Price (Volume weighted)

[5] - The Data concerning Open Interest before the start of trading session



Lending Products	Underlying Title	Multilateral Transactions[1]					Bilateral Transactions[2]		Stock Borrowing through OTC (volume)[3]
		Open Interest[5]	Volume(Offered)	Average Weighted	Transactions volume	Average Weighted	Transactions Volume	Average Weighted	Transactions Volume
OLYMPBOR	TECHNICAL OLYMPIC SA (CR)	---	---	---	---	---	---	---	
TENERGYBOR	TERNA ENERGY (CR)	10,811	17,632	5.31%	---	---	---	---	
EYAPSBOR	THESSALONIKA WATER & SEWERAGE	---	159	5.31%	---	---	---	---	
PLATBOR	THRACE PLASTICS SA (CR)	---	36,559	5.31%	---	---	---	---	
TITKBOR	TITAN CEMENT (CR)	51,000	189,948	5.31%	---	---	---	309,208	
OLTHBOR	TPA SA (CR)	---	3,278	5.31%	---	---	---	---	
TRASTORBOR	TRASTOR REAL EST. INV. CO.(CR)	---	7,580	5.31%	---	---	---	---	
VIOBOR	VIOHALCO SA/NV (CB)	23,046	3,047	8.56%	3,047	8.56%	---	---	

## Stock Lending Notes

[1] - Multilateral contracts Lending or Borrowing as per Methods 8-1, 8-2 and 8-3-3 (According to ATHEX BoD Resolution No.17)

[2] - Bilateral Contracts Lending or Borrowing as per Methods 8-3-1 and 8-3-2 (According to ATHEX BoD Resolution No.20 )

[3] - The information concerning OTC Stock Borrowing Transactions is based on the statements of the Dematerialised Securities System (DSS) operators involved and refers to volumes that have been cleared and registered up until the previous working day.

[4] - Average Price (Volume weighted)

[5] - The Data concerning Open Interest before the start of trading session

## Sectors codification for listed companies

533	-	Exploration & Production	537	-	Integrated Oil & Gas
1353	-	Commodity Chemicals	1357	-	Specialty Chemicals
1753	-	Aluminum	1755	-	Nonferrous Metals
1757	-	Steel	1775	-	General Mining
2353	-	Building Materials & Fixtures	2357	-	Heavy Construction
2723	-	Containers & Packaging	2727	-	Diversified Industrials
2733	-	Electrical Components & Equipment	2753	-	Commercial Vehicles & Trucks
2757	-	Industrial Machinery	2773	-	Marine Transportation
2777	-	Transportation Services	2791	-	Business Support Services
2797	-	Industrial Suppliers	3535	-	Distillers & Vintners
3537	-	Soft Drinks	3573	-	Farming Fishing & Plantations
3577	-	Food Products	3722	-	Durable Household Products
3726	-	Furnishings	3728	-	Home Construction
3747	-	Toys	3763	-	Clothing & Accessories
3765	-	Footwear	3767	-	Personal Products
3785	-	Tobacco	4533	-	Health Care Providers
4535	-	Medical Equipment	4577	-	Pharmaceuticals
5337	-	Food Retailers & Wholesalers	5371	-	Apparel Retailers
5373	-	Broadline Retailers	5375	-	Home Improvement Retailers
5379	-	Specialty Retailers	5553	-	Broadcasting & Entertainment
5555	-	Media Agencies	5557	-	Publishing
5751	-	Airlines	5752	-	Gambling
5753	-	Hotels	5755	-	Recreational Services
5757	-	Restaurants & Bars	5759	-	Travel & Tourism
6535	-	Fixed Line Telecommunications	6575	-	Mobile Telecommunications
7535	-	Conventional Electricity	7537	-	Alternative Electricity
7577	-	Water	8355	-	Banks
8534	-	Insurance Brokers	8536	-	Property & Casualty Insurance
8633	-	Real Estate Holding & Development	8637	-	Real Estate Services
8671	-	Industrial & Office REITs	8675	-	Specialty REITs
8775	-	Specialty Finance	8777	-	Investment Services
8985	-	Equity Investment Instruments	9533	-	Computer Services
9535	-	Internet	9537	-	Software
9572	-	Computer Hardware	9574	-	Electronic Office Equipment
9578	-	Telecommunications Equipment	12003	-	ETF

