

# Daily Official List

Hellenic Exchanges – Athens Stock Exchange S.A.

Wednesday, 5 March, 2014  
Year: 135 Trading Day No: 43

**Disclaimer:**

Hellenic Exchanges-Athens Exchange endeavours to ensure that the data and other material ("Information") presented on the Daily Official List are accurate and complete, but it is not liable for any errors or omissions of data or /and for the accuracy, credibility, updating and completeness of the aforesaid information nor it has any liability arising directly or indirectly from the use of the above Information.

The Company is not liable for the accuracy of the data included in listed companies' announcements. Only the sender of such an announcement is fully and solely liable for any infringement of third party's rights from the content of such announcement. All contents of the Daily Official List are provided only for information purposes and do not constitute investment advice or solicitation to invest in securities or other products listed for trading on the Exchange.

You acknowledge and agree that the Company is the owner of any property rights related to any Information appearing on the Daily Official List including intellectual property rights copyright, trademarks, etc.

The above data are a property of the Hellenic Exchanges-Athens Exchange and are copyright protected. Users are forbidden to reproduce, modify, copy, sale, transmit or redistribute, by all reproduction means and methods, part or the whole of the above data, without reference to their source.

The commercial exploitation of these data is, also, forbidden by third parties. Hellenic Exchanges-Athens Exchange does not carry any responsibility, direct or indirect, derived from usage or accidental alteration of the above data when used by third parties.

---

**Hellenic Exchanges – Athens Stock Exchange S.A.**

110 Athinou Ave., 10442 Athens, Tel: (210) 33.66.800, Fax: (210) 32.13.938

[www.athex.gr](http://www.athex.gr)

---

**Thessalonica Stock Exchange Center (T.S.E.C)**

16-18 Katouni Str., Thessalonica 546 25 Tel: (2310) 567.667, Fax: (2310) 530.545

**Athex Members Guarantee Fund**

14-16 Fidiou Str., Athens 106 78, Tel: (210) 33.04.682, Fax: (210) 33.04.155

**Hellenic Republic Capital Market Commission**

1 Kolokotroni Str. & 1 Stadiou Str., Athens 10562 Tel: (210) 33.77.100 Fax: (210) 33.77.173

---

**Table of Contents**

---

**Section 1: Statistical Figures of Securities and Derivatives Markets**

Summary of Markets

Athex Indices

Analytic Figures for Athex Market's Boards and Categories

Trading Details by Athex Sectors and ETFs Category

Top 10 best &amp; worst performing Shares

Derivatives Summary

**Section 2: Analytic Figures of Shares Transactions**

Analytic Figures of Shares Transactions

Shares' Notes

**Section 3: Figures of Securities Transactions**

Securities Blocks Details

Shares Rights Details

Shares Short Selling

Stock Borrowing

Shares Forced Sales

Forced Sales Registered Shares

Exchange Traded Funds (ETFs) Characteristics

**Section 5: Bonds traded in Fixed Income Assets Market**

Corporate Bonds

Government Bonds

Treasury Bills &amp; Zero Coupon Government Bonds

Government Bonds Traded with the Open Outcry Method

State Banks Bonds

**Section 6: Additional Infos**

Athex &amp; ATHEXClear Members List

List of Stocks under Market Making operations

Equity Investment Instruments Acknowledgements

**Section 7: Derivatives Market Analytic Figures**

Index Futures

Stock Futures

Index Options

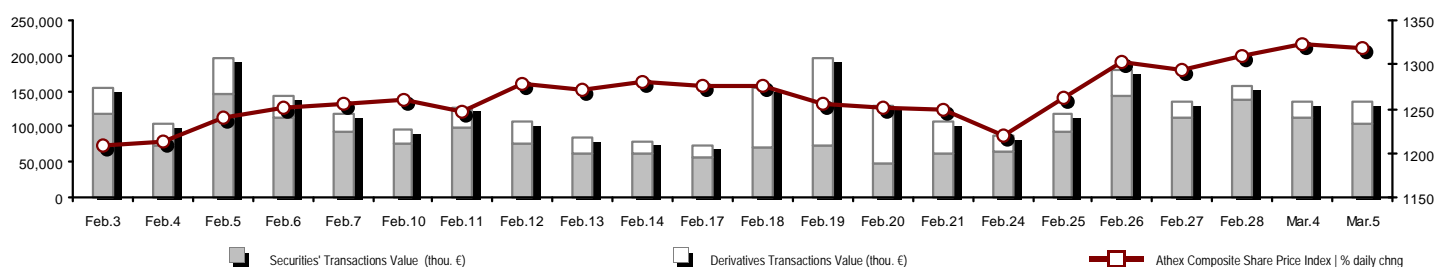
Stock Options

Stock Lending Analytic Figures (Repo Contracts)

**Appendix A: Sectors codification for listed companies**

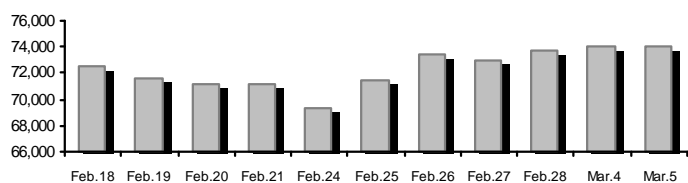
Summary of Markets

Athex Composite Share Price Index vs Shares and Derivatives Transactions Value

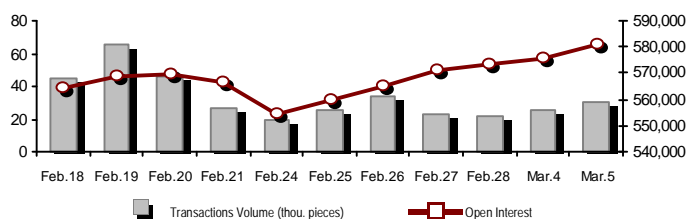


<b>Total Transactions Value (Securities/Derivatives) (thou. €):</b>	<b>134,452.01</b>		
<b>Athex Capitalisation (mill. €) **:</b>	<b>74,040.54</b>	<b>Derivatives Total Open Interest</b>	<b>581,204</b>
Daily change: mill. €   %	-20.46 -0.03%	in Index Futures   % daily chng	51,413 0.47%
Yearly Avg Capitalisation: mill. €   % chng prev year Avg	70,791.51 37.06%	in Stock Futures   % daily chng	178,306 1.41%
<b>Athex Composite Share Price Index   % daily chng</b>	<b>1,319.59 -0.28%</b>	in Index Options   % daily chng	7,048 32.53%
<b>Athex Composite Share Price Index Capitalisation (mill. €)</b>	<b>64,818.40</b>	in Stock Options   % daily chng	985 0.47%
Daily change (mill. €)	-116.13	in Stock Repos/Reverse Repos/RA   % daily chng	343,452 0.24%
<b>Securities' Transactions Value (thou. €)</b>	<b>103,151.80</b>	<b>Derivatives Transactions Value (thou. €)</b>	<b>31,300.21</b>
Daily change: thou. €   %	-10,031.50 -8.86%	Daily change: thou. €   %	10,873.47 53.23%
YtD Avg Trans. Value: thou. €   % chng prev year Avg	96,357.15 11.24%	YtD Avg Trans. Value: thou. €   % chng prev year Avg	38,491.16 49.57%
Short Selling Trans. Value: mill. €   % in total Value			
Short Covering Trans. Value: mill. €   % in total Value			
<b>Transactions Value of Blocks (thou. €)</b>	<b>9,312.74</b>		
<b>Bonds Transactions Value (thou. €)</b>	<b>0.00</b>		
<b>Securities' Transactions Volume (thou. Pieces)</b>	<b>50,473.14</b>	<b>Derivatives Contracts Volume:</b>	<b>29,853</b>
Daily change: thou. pieces   %	-7,413.85 -12.81%	Daily change: pieces   %	4,360 17.10%
YtD Avg Volume: thou. pieces   % chng prev year Avg	42,565.46 -20.46%	YtD Avg Derivatives Contracts   % chng prev year Avg	36,497 -12.20%
Short Selling Volume: thou pieces   % in total Volume			
Short Covering Volume: thou. pieces   % in total Volume			
<b>Transactions Volume of Blocks (thou. Pieces)</b>	<b>1,846.07</b>		
<b>Bonds Transactions Volume (thou. pieces)</b>	<b>0.00</b>		
<b>Securities' Trades Number</b>	<b>30,218</b>	<b>Derivatives Trades Number:</b>	<b>2,552</b>
Daily change: number   %	-4,703 -13.47%	Daily change: number   %	20 0.79%
YtD Avg Derivatives Trades number   % chng prev year Avg	29,000 -2.25%	YtD Avg Derivatives Trades number   % chng prev year Avg	2,645 0.50%
<b>Number of Blocks</b>	<b>10</b>		
<b>Number of Bonds Transactions</b>	<b>0</b>		

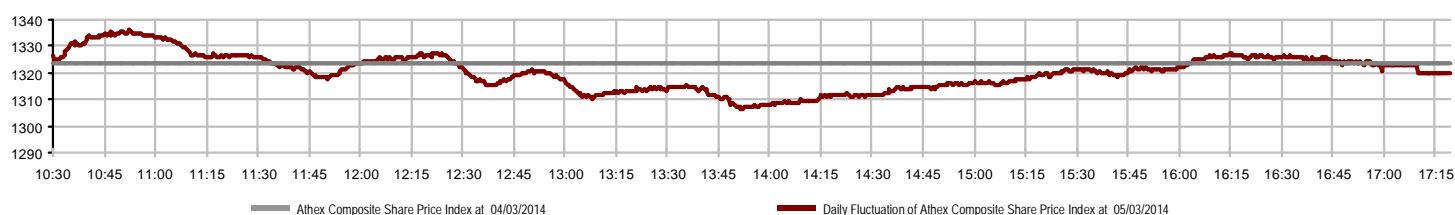
Athex Capitalisation (mill. €) \*\*



Derivatives Transactions Volume and Open Interest



Daily Fluctuation of Athex Composite Share Price Index



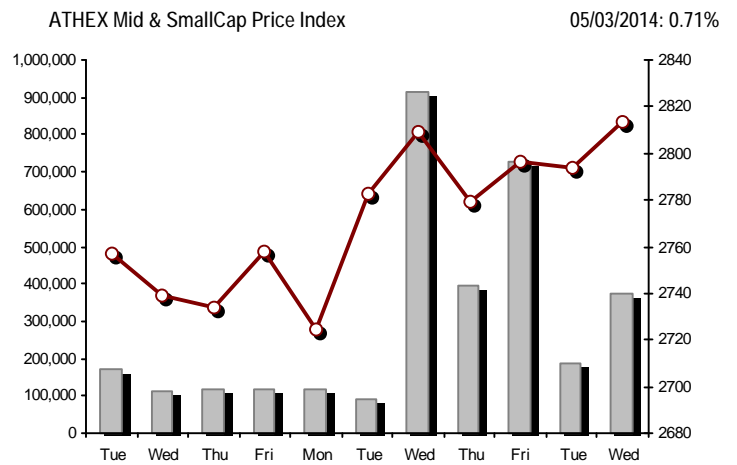
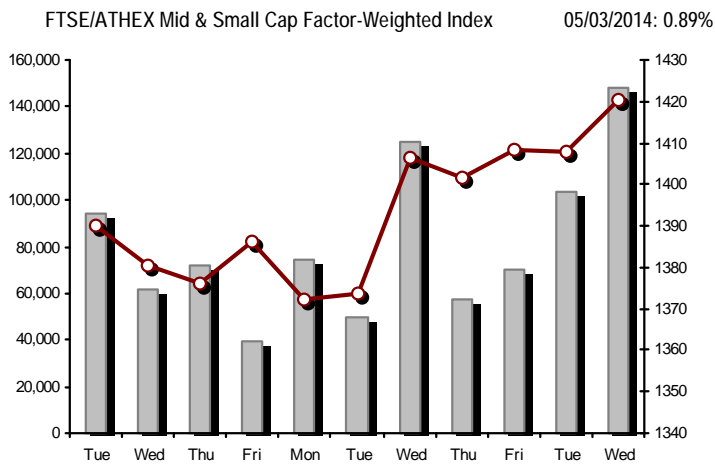
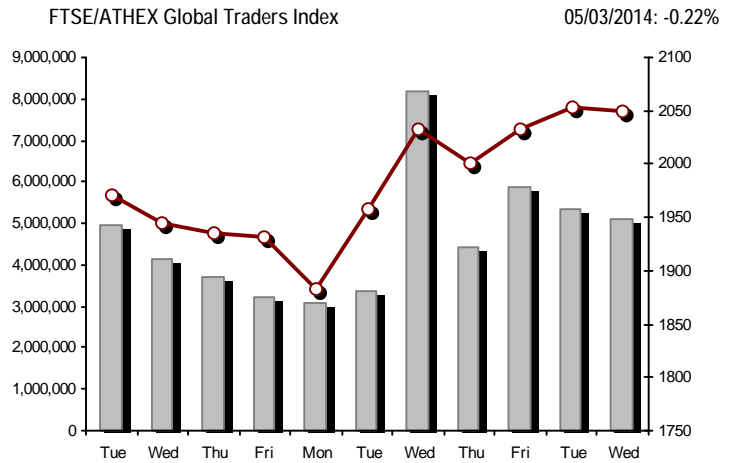
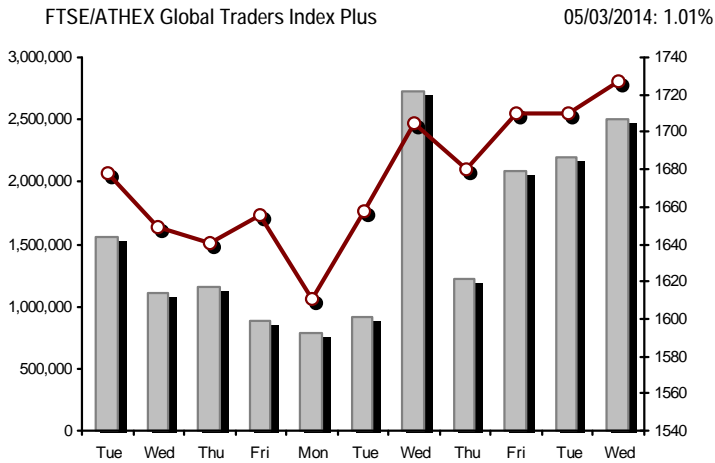
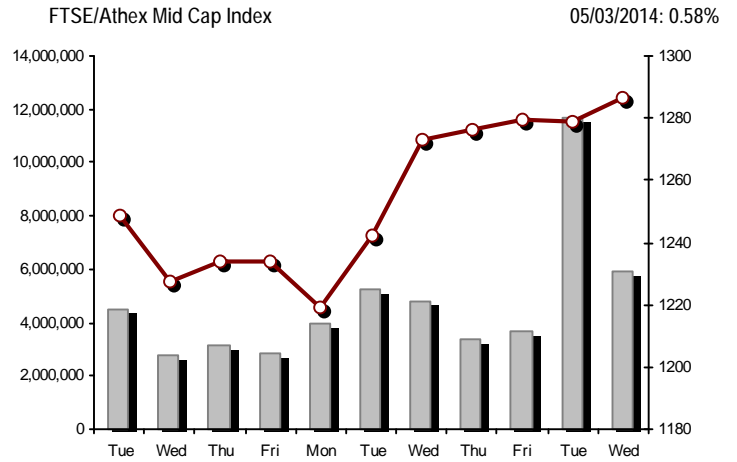
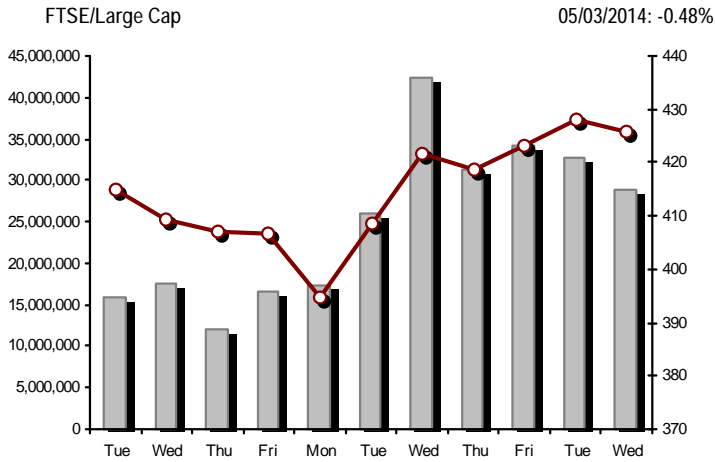
## Athex Indices

Index name	05/03/2014	04/03/2014	pts.	%	Min	Max	Year min	Year max	Year change
Athex Composite Share Price Index	1,319.59	1,323.36	-3.77	-0.28%	1,306.58	1,336.05	1,115.09	1,336.05	13.50% #
FTSE/Athex Large Cap	425.95	427.99	-2.04	-0.48%	421.98	431.55	365.97	431.55	10.68% #
FTSE/ATHEX Custom Capped	1,365.74	1,350.71	15.03	1.11%			1,184.20	1,365.74	11.07% #
FTSE/ATHEX Custom Capped - USD	1,345.62	1,333.82	11.80	0.88%			1,158.43	1,345.62	10.77% #
FTSE/Athex Mid Cap Index	1,286.23	1,278.79	7.44	0.58%	1,282.64	1,304.34	1,083.43	1,304.34	10.23% #
FTSE/ATHEX-CSE Banking Index	151.64	151.80	-0.16	-0.11%	148.58	153.88	125.25	156.48	11.39% #
FTSE/ATHEX Global Traders Index Plus	1,726.83	1,709.55	17.28	1.01%	1,700.31	1,737.04	1,486.71	1,737.04	11.35% #
FTSE/ATHEX Global Traders Index	2,049.45	2,054.04	-4.59	-0.22%	2,032.29	2,073.84	1,697.86	2,073.84	18.17% #
FTSE/ATHEX Mid & Small Cap Factor-Weighted Ind	1,420.54	1,407.95	12.59	0.89%	1,404.98	1,424.31	1,279.09	1,471.85	11.06% #
Greece & Turkey 30 Price Index	625.10	621.84	3.26	0.52%	621.65	629.03	570.55	674.07	-3.47% €
ATHEX Mid & SmallCap Price Index	2,813.52	2,793.77	19.75	0.71%	2,757.25	2,820.83	2,573.35	2,917.89	9.32% #
FTSE/Athex Market Index	1,021.67	1,025.91	-4.24	-0.41%	1,012.61	1,034.98	878.20	1,034.98	10.60% #
FTSE/Med 100	5,101.72	5,058.03	43.68	0.86%			4,605.95	5,101.72	11.65% #
Athex Composite Index Total Return Index	1,911.41	1,916.87	-5.46	-0.28%	1,892.57	1,935.26	1,615.19	1,935.26	13.54% #
FTSE/Athex Large Cap Total Return	583.67	586.47	-2.80	-0.48%			507.16	586.47	10.68% #
FTSE/ATHEX Large Cap Net Total Return	1,707.80	1,716.00	-8.20	-0.48%	1,691.91	1,730.27	1,467.32	1,730.27	10.68% #
FTSE/ATHEX Custom Capped Total Return	1,426.36	1,410.67	15.69	1.11%			1,236.76	1,426.36	11.07% #
FTSE/ATHEX Custom Capped - USD Total Return	1,405.35	1,393.02	12.33	0.88%			1,209.85	1,405.35	10.77% #
FTSE/Athex Mid Cap Total Return	1,599.15	1,589.90	9.25	0.58%			1,355.79	1,599.15	10.73% #
FTSE/ATHEX-CSE Banking Total Return Index	143.76	143.91	-0.15	-0.10%			121.20	146.35	11.38% #
Greece & Turkey 30 Total Return Index	743.83	726.54	17.29	2.38%			697.73	802.55	-3.97% €
Hellenic Mid & Small Cap Index	1,274.14	1,267.46	6.68	0.53%	1,259.08	1,283.17	1,061.82	1,283.17	14.40% #
FTSE/Athex Banks	200.36	200.56	-0.20	-0.10%	196.31	203.32	165.49	206.75	11.39% #
FTSE/Athex Insurance	1,580.50	1,569.96	10.54	0.67%	1,569.96	1,591.04	1,306.55	1,601.57	20.00% #
FTSE/Athex Financial Services	1,991.07	1,948.41	42.66	2.19%	1,949.70	1,999.05	1,599.55	1,999.05	12.58% #
FTSE/Athex Industrial Goods & Services	3,482.08	3,479.08	3.00	0.09%	3,436.11	3,508.59	3,046.48	3,594.26	7.32% #
FTSE/Athex Retail	3,560.62	3,551.90	8.72	0.25%	3,446.04	3,603.61	3,090.34	3,822.52	7.94% #
FTSE/ATHEX Real Estate	2,714.38	2,821.42	-107.04	-3.79%	2,675.54	2,821.42	2,194.73	2,821.42	22.45% #
FTSE/Athex Personal & Household Goods	7,022.05	7,125.82	-103.77	-1.46%	6,964.90	7,259.57	5,965.34	7,300.84	18.67% #
FTSE/Athex Food & Beverage	6,890.97	6,854.55	36.42	0.53%	6,850.92	6,975.15	6,683.34	8,227.06	-12.20% €
FTSE/Athex Basic Resources	3,244.86	3,205.44	39.42	1.23%	3,181.79	3,254.92	2,535.89	3,254.92	17.91% #
FTSE/Athex Construction & Materials	3,171.57	3,213.84	-42.27	-1.32%	3,125.78	3,236.01	2,531.26	3,236.01	18.27% #
FTSE/Athex Oil & Gas	3,069.45	3,015.53	53.92	1.79%	2,991.39	3,069.45	2,686.40	3,076.53	7.07% #
FTSE/Athex Chemicals	6,463.48	6,224.47	239.01	3.84%	6,221.93	6,467.68	5,783.18	6,737.88	7.79% #
FTSE/Athex Media	2,260.48	2,363.90	-103.42	-4.37%	2,127.51	2,363.90	1,543.92	2,777.58	46.41% #
FTSE/Athex Travel & Leisure	2,031.65	2,047.56	-15.91	-0.78%	2,018.05	2,059.20	1,634.38	2,059.20	20.93% #
FTSE/Athex Technology	1,056.39	1,052.42	3.97	0.38%	1,050.59	1,072.24	786.21	1,072.24	34.16% #
FTSE/Athex Telecommunications	3,440.71	3,523.29	-82.58	-2.34%	3,440.71	3,550.81	2,675.50	3,550.81	29.27% #
FTSE/Athex Utilities	4,077.53	4,092.18	-14.65	-0.36%	4,056.91	4,155.39	3,308.43	4,191.02	7.51% #
FTSE/Athex Health Care	276.57	276.24	0.33	0.12%	268.86	282.96	220.03	282.96	24.02% #
Athex All Share Index	261.86	261.96	-0.10	-0.04%			226.62	261.96	11.21% #

Note 1: Greece & Turkey 30 Pr data is the indicative at 17:20, whereas FTSE/ATHEX Custom Capped, FTSE/ATHEX Custom Capped - USD, FTSE/ATHEX Custom Capped TR, FTSE/ATHEX Custom Capped - USD TR, FTSE/Med 100 & Greece & Turkey 30 Rt closing prices refer to the previous trading day of 04/03/2014.

Note 2: The Hellenic Mid & Small Cap Index is a Customized index calculated by the Athens Exchange.

Athex Indices



Indices volume of transactions

Indices closing prices

## Analytic Figures for Athex Market's Boards and Categories

	Total Traded Securities	Main Market	Low Dispersion	Other Categories (*)	Exchange Traded Funds (ETFs)	Warrants
Totals	168	131	7	24	3	3
Gain / Lose / Same:	82 / 64 / 22	70 / 46 / 15	2 / 1 / 4	10 / 11 / 3	0 / 3 / 0	0 / 3 / 0
Athex Capitalisation (mill. €) **	74,040.54	71,427.87	2,134.49	478.19		
Daily Average Trans/ons Value(thou.€)	96,357.15	86,095.88	67.58	66.50	74.28	10,052.91
Transactions Value	103,151.80	87,606.35	27.27	150.15	12.61	15,355.42
Main Board:	93,839.06	79,240.29	27.27	150.15	12.61	14,408.74
Blocks Board:	9,312.74	8,366.06	0.00	0.00	0.00	946.68
Forced Sales Board:	0.00	0.00	0.00	0.00	0.00	0.00
Special Terms Board:	0.00	0.00	0.00	0.00	0.00	0.00
Daily Average Transactions Volume	42,565,461	33,454,772	31,996	230,683	13,725	8,834,285
Transactions Volume	50,473,143	36,070,450	16,125	714,690	2,914	13,668,964
Main Board:	48,627,076	35,190,383	16,125	714,690	2,914	12,702,964
Blocks Board:	1,846,067	880,067	0	0	0	966,000
Forced Sales Board:	0	0	0	0	0	0
Special Terms Board:	0	0	0	0	0	0
Daily Average Number of Trades	29,000	26,424	66	169	8	2,333
Number of Trades	30,218	26,545	53	209	5	3,406
Main Board:	30,208	26,537	53	209	5	3,404
Blocks Board:	10	8	0	0	0	2
Forced Sales Board:	0	0	0	0	0	0
Special Terms Board:	0	0	0	0	0	0

(\*) Summarised Transactions figures for Under Deletion and Under Supervision Categories. (\*\*) The Market Capitalization of the Companies that belong in the Under Supervision Category is not included.

## Trading Details by Athex Sectors and ETFs Category

Code	Sectors	Gain / Lose / Same	Number of Trades	Transactions Volume	Transactions Value	% of Total Trans. Value
8300	- Banks	2 / 6 / 1	10,979	38,407,734	47,799,343.58	46.34%
1700	- Basic Resources	9 / 3 / 0	2,077	1,025,349	3,145,885.28	3.05%
1300	- Chemicals	3 / 1 / 2	186	94,540	118,646.56	0.12%
2300	- Construction & Materials	7 / 11 / 4	1,980	1,298,237	10,361,983.36	10.05%
11000	- ETF	0 / 3 / 0	5	2,914	12,611.81	0.01%
8700	- Financial Services	4 / 0 / 0	1,952	3,587,438	4,127,810.61	4.00%
3500	- Food & Beverage	7 / 6 / 0	457	163,356	1,430,513.29	1.39%
4500	- Health Care	4 / 2 / 1	438	454,722	250,283.99	0.24%
2700	- Industrial Goods & Services	15 / 5 / 2	1,545	1,019,998	2,402,085.21	2.33%
8500	- Insurance	1 / 0 / 0	39	11,469	17,200.81	0.02%
5500	- Media	0 / 1 / 2	20	5,468	1,583.50	0.00%
500	- Oil & Gas	3 / 0 / 0	1,600	387,077	3,065,687.93	2.97%
3700	- Personal & Household Goods	6 / 9 / 3	1,015	569,547	3,344,115.25	3.24%
8600	- Real Estate	2 / 3 / 3	384	179,187	968,375.84	0.94%
5300	- Retail	4 / 1 / 0	378	72,547	1,252,999.16	1.21%
9500	- Technology	8 / 5 / 1	797	586,846	646,659.25	0.63%
6500	- Telecommunications	0 / 1 / 0	1,275	527,263	6,722,451.28	6.52%
5700	- Travel & Leisure	6 / 4 / 3	2,935	1,552,316	12,219,107.17	11.85%
7500	- Utilities	1 / 3 / 0	2,154	526,885	5,264,456.20	5.10%

## Top 10 best &amp; worst performing Shares

## Main Market

With positive Price change			With negative Price change		
	Closing price	change		Closing price	change
SIDENOR (CR)	1.97	9.44% #	ATTICA BANK S.A. (CR)	0.210	-4.54% €
KLEEMAN HELLAS SA (CR)	2.32	7.91% #	ATHENS MEDICAL CENTER SA (CR)	0.860	-4.44% €
HELLENIC CABLES SA (CR)	1.83	6.40% #	PROFILE SA (CR)	0.942	-4.17% €
CORINTH PIPEWORKS SA (CR)	2.15	5.91% #	EUROBANK PROPERTIES REIC (CR)	8.26	-3.95% €
HALKOR SA (CB)	0.781	5.40% #	HEL. SUGAR INDUSTRY SA (CB)	0.910	-3.70% €
CYCLON HELLAS SA (CR)	0.522	5.03% #	IKTINOS HELLAS SA (CR)	1.64	-2.96% €
THRACE PLASTICS SA (CR)	1.32	4.76% #	J & P - AVAX SA (CR)	1.88	-2.59% €
FRIGOGLASS SA (CR)	4.80	4.35% #	TERNA ENERGY (CR)	4.54	-2.37% €
PETROPOULOS PETROS (CR)	1.98	3.66% #	OTE (CR)	12.50	-2.34% €
MARFIN INVESTMENT GROUP (CR)	0.498	3.53% #	GEK TERNA (CR)	3.80	-2.31% €
With the highest Transactions Value			With the highest Transactions Volume		
	Value (thou. €)	change		Volume	change
PIRAEUS BANK (CR)	19,850.61	0.00% -	ALPHA BANK (CR)	9,931,147	-1.09% €
OPAP (CR)	9,987.14	-1.10% €	PIRAEUS BANK (CR)	9,677,758	0.00% -
TITAN CEMENT (CR)	7,438.16	-1.03% €	MARFIN INVESTMENT GROUP (CR)	3,289,630	3.53% #
ALPHA BANK (CR)	7,206.58	-1.09% €	ATTICA BANK S.A. (CR)	2,074,724	-4.54% €
OTE (CR)	6,722.45	-2.34% €	EUROBANK ERGASIAS (CR)	1,917,623	1.11% #
PPC (CR)	4,378.61	-0.26% €	NATIONAL BANK (CR)	1,132,400	0.87% #
NATIONAL BANK (CR)	3,969.89	0.87% #	OPAP (CR)	851,705	-1.10% €
HELLENIC EXCHANGES-A.S.E. (CR)	2,514.28	1.56% #	OTE (CR)	527,263	-2.34% €
FOURLIS (CR)	2,246.84	0.00% -	INTRALOT (CR)	408,036	2.27% #
MYTILINEOS HOLDINGS (CR)	1,945.61	-0.28% €	HYGEIA SA (CR)	386,172	2.77% #

Note: Stocks that are not included in the "Low Dispersion" and "Under Supervision" categories, and the transactions value is more than 10,000 €.



## Derivatives Summary

	Number of Trades	Volume	Open Interest	Transactions Value
Index Futures	684	8,564	51,413	18,257,955.00
FTSE/Athex Large Cap	684	8,564	51,413	18,257,955.00
Stock Futures	1,762	17,172	178,306	6,949,919.90
ALPHA BANK (CR)	113	1,821	34,107	126,596.30
CC HBC AG (CR)	28	52	669	96,082.00
CORINTH PIPEWORKS SA (CR)	21	143	542	30,051.00
ELLAKTOR (CR)	31	122	1,903	48,115.00
EUROBANK ERGASIAS (CR)	13	492	4,077	23,068.40
EUROBANK PROPERTIES REIC (CR)	19	29	189	28,870.80
EYDAP S.A. (CR)	19	47	1,347	39,353.00
FOLLI FOLLIE (CR)	26	110	233	274,013.00
FRIGOGLASS SA (CR)	17	55	1,159	25,675.00
GEK TERNA (CR)	54	271	32,379	103,659.00
HELLENIC EXCHANGES-A.S.E. (CR)	66	218	2,455	183,806.00
HELLENIC PETROLEUM (CR)	106	568	6,187	409,412.00
INTRALOT (CR)	73	588	4,617	132,998.00
JUMBO SA (CR)	29	104	383	142,116.00
MARFIN INVESTMENT GROUP (CR)	151	3,369	25,112	164,250.40
METKA (CR)	11	20	1,196	26,751.00
MOTOR OIL (CR)	44	119	960	115,328.00
MYTILINEOS HOLDINGS (CR)	131	900	12,848	631,563.00
NATIONAL BANK (CR)	106	683	12,442	238,241.00
OPAP (CR)	90	576	3,233	673,902.00
OTE (CR)	212	1,009	5,769	1,285,037.00
P.P.A. S.A. (CR)	9	23	711	41,841.00
PIRAEUS BANK (CR)	129	4,459	14,195	911,101.00
PPC (CR)	165	866	6,805	1,004,265.00
SIDENOR (CR)	56	411	1,134	78,664.00
TERNA ENERGY (CR)	19	66	2,954	30,189.00
TITAN CEMENT (CR)	17	33	655	76,304.00
VIOHALCO SA/NV (CB)	7	18	45	8,668.00
Index Options	92	2,635	7,048	5,544,200.00
FTSE/Athex Large Cap	92	2,635	7,048	5,544,200.00
Stock Options	0	0	985	0.00
ALPHA BANK (CR)	0	0	0	0.00
NATIONAL BANK (CR)	0	0	110	0.00
OPAP (CR)	0	0	0	0.00
OTE (CR)	0	0	620	0.00
PIRAEUS BANK (CR)	0	0	0	0.00
PPC (CR)	0	0	255	0.00
Stock Repos - Stock Reverse Repos - Repurchase Agreements	14	1,482	343,452	548,137.40
Stock Reverse Repos	7	826	113,159	296,730.20
Stock Repos	5	302	194,475	103,473.00
Repurchase Agreement	2	354	35,818	147,934.20
Total Derivatives Traded	2,552	29,853	581,204	31,300,212.30









Number of Outstanding Securities	Nominal Value	Dividends [1]			Date of Last Coupon		Note	Shares	Closing price	% change	Previous closing price/date	Open price	Price min	Price max	Last price	Avg price	Last Bid [7]	Last Ask [7]	P/E after	Year	Volume	Trades	Transactions Value	Company Mkt Value (thou. €)	Year low	Year high	Sector [4]	
54,888,240	1.13	0.1	0.1	---	25/04/2013	22/03/2006	---	TRASTOR REAL EST. INV. CO.(CR)	1.11	---	1.11	04/03/2014	1.09	1.09	1.14	1.12	1.12	2200@1.10	1100@1.13	---	2012	26,932	32	30,110.38	60,925.95	0.940	1.21	8671
15,627,315	0.300	---	---	---	16/11/1992	03/12/2012	---	UNIBIOS (CR)	0.390	---	0.390	04/03/2014	0.397	0.380	0.397	0.390	0.380	5000@0.370	3480@0.390	---	2012	28,870	26	10,977.59	6,094.65	0.308	0.397	2353
18,810,000	0.400	---	---	---	08/07/2010	14/11/2007	---	VARVERIS - MODA BAGNO SA (CR)	0.224	-6.67	€ 0.240	04/03/2014	0.216	0.216	0.224	0.224	0.217	150@0.216	90@0.224	---	2012	860	6	186.24	4,213.44	0.168	0.279	2353
219,611,308	---	---	---	---	---	14/02/2014	---	VIOHALCO SA/NV (CB)	4.79	1.92	# 4.70	04/03/2014	4.77	4.75	4.85	4.79	4.79	2075@4.77	7924@4.80	---	---	144,407	331	692,229.98	1,051,938.17	3.92	4.85	2727
4,968,600	2.88	---	---	---	01/07/1998	14/12/1998	---	VIS SA (CR)	0.756	---	0.756	27/02/2014	---	---	---	---	---	190@0.757	---	---	2012	---	---	---	3,756.26	0.756	0.980	2723
6,325,000	0.600	---	---	---	19/07/2010	17/02/2014	---	VOGIATZOGLU SYSTEMS SA (CR)	1.19	3.48	# 1.15	28/02/2014	1.10	1.10	1.19	1.19	1.10	1@1.15	85@1.16	---	2012	204	5	224.66	7,526.75	0.951	2.27	2797

## Exchange Traded Funds (ETFs)

5,848,618	---	---	---	---	24/01/2008	---	---	ALPHA ETF FTSE Athex Large Cap	4.22	-0.92	€ 4.26	04/03/2014	4.45	4.22	4.45	4.22	4.32	14@4.23	300@4.30	---	---	2,910	3	12,568.31	-	3.69	4.45	11000	
294,878	---	---	---	---	29/06/2009	---	---	NBGAM ETF	14.55	-0.27	€ 14.59	04/03/2014	14.55	14.55	14.55	14.55	14.55	---	---	---	---	---	2	1	29.10	-	12.20	14.59	11000
388,550	---	---	---	---	03/11/2010	---	---	NBGAM ETF GREECE & TURKEY 30	7.20	-1.24	€ 7.29	04/03/2014	7.20	7.20	7.20	7.20	7.20	---	---	---	---	---	2	1	14.40	-	6.70	7.70	11000

## Low Dispersion

14,000,000	3.80	---	---	---	23/04/2010	29/06/1999	4815	ALPHA REAL ESTATE SA(CR)	5.81	---	5.81	04/03/2014	5.81	5.81	5.81	5.81	5.81	50@5.82	300@6.30	12.03	2012	100	2	581.00	81,340.00	4.69	7.10	8637	
63,900,000	3.00	---	---	---	23/06/2003	04/11/2008	4816	ASTIR PALACE SA (CR)	3.90	---	3.90	04/03/2014	3.89	3.89	3.90	3.90	3.90	1110@3.90	48@3.91	---	2012	4,230	21	16,494.00	249,210.00	3.56	4.05	5753	
90,902,904	0.800	---	---	---	09/08/2004	08/03/2006	4814	ATHENA SA (CR)	0.180	---	0.180	04/03/2014	0.180	0.180	0.180	0.180	0.180	510@0.164	11@0.180	---	2012	3,090	2	556.20	16,362.52	0.160	0.310	2357	
191,660,320	0.300	---	---	---	20/07/2009	29/12/2010	4817	ATTICA HOLDINGS (CR)	0.681	-0.44	€ 0.684	04/03/2014	0.684	0.670	0.690	0.681	0.681	34@0.690	1834@0.700	---	2012	7,966	15	5,425.29	130,520.68	0.495	0.795	5759	
68,322,221	1.00	---	---	---	08/03/2002	08/04/2013	4986	GENIKI BANK (CR)	10.15	---	10.15	04/03/2014	---	---	---	---	---	10@9.10	139@10.52	---	2012	---	---	---	693,470.54	8.00	15.00	8355	
71,082,707	1.70	---	---	---	01/07/2010	21/11/2012	4820	HERACLES GEN.CEMENT CO. (CR)	1.30	---	1.30	04/03/2014	1.30	1.30	1.30	1.30	1.30	42@1.31	300@1.34	---	2012	8	1	10.40	92,407.52	1.26	1.37	2353	
13,404,440	8.63	---	---	---	02/04/2001	06/03/1992	4822	IONIAN HOTELS SA (CR)	7.48	---	7.48	18/02/2014	---	---	---	---	---	---	100@8.97	---	---	2012	---	---	---	100,265.21	6.64	9.90	5753
2,760,000	7.70	7.6	8.52	---	26/06/2013	16/07/1990	4823	KARELIA TOBACCO CO. SA (CB)	218.00	10.18	# 197.85	04/03/2014	218.00	218.00	218.00	218.00	218.00	5@199.00	5@228.00	13.24	2012	16	3	3,488.00	601,680.00	180.00	218.00	3785	
106,980,050	2.25	---	---	---	25/07/2008	24/02/2014	---	MINOAN LINES SA (CR)	1.54	2.67	# 1.50	04/03/2014	1.51	1.51	1.63	1.63	1.54	143865@1.50	1000@1.59	---	2012	465	7	714.75	164,749.28	1.49	2.00	5759	
17,240,776	0.370	---	---	---	14/07/2005	30/09/2003	4827	PERSEUS SA (CR)	0.260	---	0.260	26/02/2014	---	---	---	---	---	---	5479@0.310	15.15	2012	---	---	---	4,482.60	0.260	0.366	3577	

## Surveillance

33,301,715	0.320	---	---	---	27/06/2003	08/07/2009	4978	AEGEK (CR)	0.092	-4.17	€ 0.096	04/03/2014	0.096	0.086	0.096	0.086	0.092	2246@0.086	7015@0.096	---	2012	1,782	9	163.54	3,063.76	0.077	0.136	2357	
14,870,100	0.300	---	---	---	15/05/2008	26/09/2011	4844	ALPHA GRISSIN S.A. (CR)	0.081	---	0.081	05/02/2014	---	---	---	---	---	3000@0.065	1000@0.097	---	2012	---	---	---	1,204.48	0.068	0.143	9533	
215,246,452	0.300	---	---	---	25/06/2001	24/09/2001	4446	ALTEC SA (CR)	0.027	-6.90	€ 0.029	04/03/2014	0.034	0.027	0.034	0.027	0.027	12956@0.028	3000@0.032	---	2012	25,844	9	708.29	5,811.65	0.026	0.040	9533	
2,969,713	0.300	---	---	---	02/07/2008	28/02/2011	4958	ANEK LINES SA (PR, Issue '96)	0.150	---	0.150	28/02/2014	---	---	---	---	---	900@0.150	---	---	2012	---	---	---	22,209.75	0.150	0.280	5759	
312,163	0.300	---	---	---	02/07/2008	28/02/2011	4959	ANEK LINES SA (PR, Issue '90)	1.43	---	1.43	09/09/2013	---	---	---	---	---	---	16@1.15	---	---	2012	---	---	---	22,209.75	1.43	1.43	5759
185,373,016	0.300	---	---	---	02/07/2008	28/02/2011	4957	ANEK LINES SA (CR)	0.115	-1.71	€ 0.117	04/03/2014	0.119	0.109	0.119	0.109	0.115	361@0.109	21743@0.118	---	2012	24,989	11	2,883.80	22,209.75	0.100	0.141	5759	
81,644,555	0.300	---	---	---	01/07/2008	02/09/2002	4630	ATTI - KAT SA (CR)	0.025	19.05	# 0.021	04/03/2014	0.025	0.025	0.025	0.025	0.025	10000@0.021	2207@0.025	---	2012	1,000	2	25.01	2,041.11	0.020	0.036	2357	
20,255,805	0.300	---	---	---	22/08/2006	02/08/2010	4881	AXON HOLDING SA (CR)	0.072	20.00	# 0.060	04/03/2014	0.064	0.064	0.072	0.072	0.072	15000@0.072	---	---	2012	4,600	3	330.40	1,458.42	0.060	0.139	4533	
17,579,754	4.16	---	---	---	18/08/2006	02/08/2010	4885	BIOTER SA (CR)	0.180	12.50	# 0.160	04/03/2014	0.180	0.180	0.180	0.180	0.180	500@0.131	29@0.169	---	2012	2,400	3	432.00	3,164.36	0.104	0.180	2357	
12,431,980	0.720	---	---	---	20/06/2003	10/07/2003	4559	COMPUCON SA (CR)	0.045	---	0.045	28/02/2014	---	---	---	---	---	---	9999@0.045	---	---	2012	---	---	---	559.44	0.025	0.056	9537
30,159,583	0.470	---	---	---	26/06/2008	29/12/2010	4962	DIAS A/C (CR)	0.040	---	0.040	18/02/2014	---	---	---	---	---	---	---	---	---	2012	---	---	---	1,206.38	0.040	0.092	3573
15,878,748	0.480	---	---	---	10/07/2006	22/03/2004	4960	DOMKI KRITIS SA (CR)	0.400	1.27	# 0.395	28/02/2014	0.398	0.398	0.400	0.400	0.400	30000@0.399	1872@0.410	---	2012	50,502	15	20,197.06	6,351.50	0.264	0.420	2357	
3,961,300	1.28	---	---	---	29/06/2004	03/08/2000	4808	DUROS SA (CR)	0.241	---	0.241	27/02/2014	0.241	0.241	0.241	0.241	0.241	500@0.194	39@0.289	---	2012	20	2	4.82	954.67	0.200	0.759	3763	

Number of Outstanding Securities	Nominal Value	Dividends [1]			Date of Last Coupon		Note	Shares	Closing price	% change	Previous closing price/date	Open price	Price min	Price max	Last price	Avg price	Last Bid [7]	Last Ask [7]	P/E after	Year	Volume	Trades	Transactions Value	Company Mkt Value (thou. €)	Year low	Year high	Sector [4]		
7,085,888	1.59	---	---	---	02/07/1996	06/09/2010	4690	ELVIEMEK (CR)	3.97	---	3.97	26/02/2014	---	---	---	---	---	---	(-6)	2012	---	---	---	28,130.98	1.54	3.97	8633		
6,000,000	0.600	---	---	---	13/06/2008	08/04/2004	4886	EUROBROKERS S.A. (CR)	0.052	---	0.052	05/02/2014	---	---	---	---	220@0.052	---	---	2012	---	---	---	312.00	0.052	0.052	8534		
21,820,410	0.800	---	---	---	22/05/2008	02/08/2011	4882	EUROMEDICA SA (CR)	0.300	---	0.300	28/02/2014	0.300	0.300	0.300	0.300	---	18837@0.300	---	2012	400	2	120.00	6,546.12	0.300	0.389	4533		
110,097,185	0.300	---	---	---	04/12/2013		5033	Forthnet (CR)	1.33	5.56	#	1.26	04/03/2014	1.26	1.26	1.34	1.34	1.33	589@1.27	3261@1.34	---	---	9,511	15	12,628.71	146,429.26	1.10	1.98	9535
1,270,000	0.300	---	---	---	06/07/2007	06/02/2013	5007	GIRAKIAN PROFIL SA (CB)	1.80	---	1.80	25/02/2014	---	---	---	---	---	800@1.80	---	2012	---	---	---	2,286.00	1.80	1.80	1757		
179,707,771	0.300	---	---	---	27/06/2002	01/11/2011	4847	HELLAS ONLINE SA (CR)	0.586	-6.24	€	0.625	04/03/2014	0.592	0.563	0.600	0.586	0.586	45255@0.604	1@0.632	---	2012	94,045	33	55,082.00	105,308.75	0.400	0.670	9537
13,692,227	1.47	---	---	---	07/07/2006	08/10/1999	4845	HELLENIC FABRICS SA (CR)	0.119	-4.80	€	0.125	04/03/2014	0.119	0.119	0.119	0.119	1000@0.100	3100@0.119	---	2012	2,400	1	285.60	1,629.38	0.100	0.153	3763	
30,390,000	0.310	---	---	---	18/08/2008	29/12/2006	4447	HELLENIC FISHFARMING SA (CR)	0.067	1.52	#	0.066	04/03/2014	0.066	0.066	0.076	0.067	798@0.067	998@0.076	15.70	2012	7,120	9	474.72	2,036.13	0.056	0.119	3573	
1,540,000	0.600	---	---	---	08/08/1994	19/09/2000	4855	J.BOUTARIS & SON HOLD. (PB)	0.012	---	0.012	25/02/2014	---	---	---	---	---	1500@0.014	---	---	2012	---	---	---	1,201.92	0.012	0.012	3535	
25,179,640	0.600	---	---	---	08/08/1994	19/09/2000	4854	J.BOUTARIS & SON HOLD. SA (CB)	0.047	-17.54	€	0.057	28/02/2014	0.047	0.047	0.047	0.047	6000@0.056	125@0.067	---	2012	3,000	4	140.99	1,201.92	0.043	0.084	3535	
7,125,216	0.650	---	---	---	01/07/2005	14/12/1999	4955	KRE.KA SA (CR)	0.166	---	0.166	04/03/2014	---	---	---	---	---	5000@0.153	494@0.166	---	2012	---	---	---	1,182.79	0.154	0.278	3573	
51,081,030	1.00	---	---	---	20/08/2007	03/09/2007	4912	LAVIPHARM SA (CR)	0.137	-3.52	€	0.142	04/03/2014	0.145	0.133	0.145	0.133	0.137	1835@0.134	5000@0.140	---	2012	2,360	3	323.48	6,998.10	0.130	0.164	4577
322,925,288	0.300	---	---	---	23/05/2007	10/04/2000	4554	M.J. MAILLIS SA (CR)	0.117	19.39	#	0.098	04/03/2014	0.117	0.117	0.117	0.117	183470@0.117	---	---	2012	446,849	46	52,281.33	37,782.26	0.067	0.117	2723	
9,567,289	0.300	---	---	---	01/07/2004	19/11/2007	4944	MARAC ELECTRONICS (CR)	0.297	---	0.297	31/12/2013	---	---	---	---	---	---	1300@0.270	---	---	2012	---	---	---	2,841.48	0.297	0.297	9578
4,178,856	1.58	---	---	---	21/07/2011	28/07/2004	4983	MEDICON S.A (CR)	0.450	12.78	#	0.399	04/03/2014	0.320	0.320	0.478	0.478	0.450	300@0.390	217@0.478	---	2012	667	6	300.34	1,880.49	0.303	0.952	4535
255,459,600	0.300	---	---	---	26/06/2000	03/12/2010	4833	NEL SA (CR)	0.064	-12.33	€	0.073	04/03/2014	0.062	0.062	0.070	0.070	0.064	500@0.070	3900@0.079	---	2012	26,501	10	1,695.06	16,349.41	0.049	0.090	5759
20,231,328	0.600	---	---	---	15/07/2008	25/06/2004	4879	NIKAS SA (CR)	0.170	---	0.170	04/03/2014	---	---	---	---	---	1000@0.171	1000@0.185	---	2012	---	---	---	3,439.33	0.170	0.180	3577	
20,210,127	1.53	---	---	---	27/06/1997	20/03/2000	5006	PARNASSOS ENTERP. (CR)	0.137	6.20	#	0.129	04/03/2014	0.137	0.137	0.137	0.140	1000@0.122	2460@0.134	---	2012	1	1	0.14	2,768.79	0.101	0.172	8775	
14,967,940	0.500	---	---	---	21/05/2008	04/01/2008	4956	PASAL DEVELOPMENT S.A. (CR)	0.129	-19.37	€	0.160	04/03/2014	0.129	0.129	0.129	0.129	1998@0.133	5000@0.192	---	2012	2,000	2	258.00	1,930.86	0.129	0.239	8633	
40,946,303	0.360	---	---	---	18/07/2005	27/11/2007	4856	PC SYSTEMS SA (CR)	0.169	---	0.169	26/02/2014	---	---	---	---	---	---	20000@0.136	---	---	2012	---	---	---	6,919.93	0.070	0.169	9533
18,750,000	0.300	---	---	---	02/07/2001	31/12/2012	4985	PEGASUS PUBLISHING S.A. (CR)	0.048	---	0.048	04/03/2014	0.048	0.048	0.048	0.048	101942@0.049	---	---	2012	8	2	0.38	900.00	0.045	0.189	5557		
65,326,268	0.530	---	---	---	04/07/2007	19/07/2006	4750	SATO SA (CR)	0.188	-1.57	€	0.191	04/03/2014	0.192	0.181	0.192	0.185	0.188	781@0.181	3166@0.185	---	2012	5,007	10	942.72	12,281.34	0.139	0.250	3726
36,235,184	1.00	---	---	---	01/07/2008	30/07/2012	4961	SELONDA AQUACULTURE SA (CR)	0.107	-3.60	€	0.111	04/03/2014	0.107	0.107	0.107	0.107	13291@0.107	1000@0.110	---	2012	1,474	6	157.72	3,877.16	0.090	0.149	3573	
7,914,480	2.50	---	---	---	23/06/2008	29/06/2011	4888	SFAKIANAKIS SA (CR)	0.630	---	0.630	04/03/2014	---	---	---	---	---	200@0.630	504@0.756	---	2012	---	---	---	4,986.12	0.488	0.750	5379	
10,000,000	1.35	---	---	---	24/06/2008	10/05/2005	4887	SIDMA SA (CR)	0.322	11.03	#	0.290	04/03/2014	0.322	0.322	0.322	0.322	1658@0.322	---	---	2012	2,210	5	711.62	3,220.00	0.240	0.440	1757	
29,060,950	0.340	---	---	---	20/08/2007	24/10/2001	4884	SPIDER METAL INDUSTRY SA (CR)	0.040	---	0.040	04/03/2014	---	---	---	---	---	2000@0.040	2000@0.045	---	2012	---	---	---	1,162.44	0.012	0.053	2757	
100,793,000	0.300	---	---	---	16/07/2009	05/08/2013	5008	TELETIPOS SA (CR)	0.150	---	0.150	04/03/2014	---	---	---	---	---	2000@0.125	200@0.180	---	2012	---	---	---	15,118.95	0.111	0.215	5553	
3,229,566	0.320	---	---	---	22/06/2005	23/09/1999	4629	VARANGIS AVEPE S.A. (CR)	1.00	---	1.00	05/11/2013	---	---	---	---	---	---	250@0.800	---	---	2012	---	---	---	3,229.57	1.00	1.00	3726
16,383,428	0.300	---	---	---	25/06/2002	21/06/2013	4997	VARVARESSOS SA (CB)	0.210	---	0.210	04/03/2014	---	---	---	---	---	---	1000@0.180	---	---	2012	---	---	---	3,440.52	0.152	0.247	3763
13,191,620	0.620	---	---	---	04/08/2010	09/09/2002	4977	YALCO - CONSTANTINOU SA (CB)	0.241	---	0.241	10/02/2014	---	---	---	---	---	---	1000@0.229	---	---	2012	---	---	---	3,179.18	0.241	0.241	3722

## Under Deletion

766,000	2.83	---	---	---	01/07/2004	11/12/2012	4937	TRIA ALFA SA (CR)	3.33	---	3.33	27/01/2014	---	---	---	---	---	---	11@3.00	---	2012	---	---	---	2,792.11	2.81	3.33	3763	
245,000	2.83	---	---	---	19/07/2010	11/12/2012	4938	TRIA ALFA SA (PR)	0.985	---	0.985	12/02/2014	---	---	---	---	---	---	428@0.969	1@1.17	---	2012	---	---	---	2,792.11	0.969	1.39	3763

## Under Suspension

49,030,011	0.300	---	---	---	19/07/2010	12/05/2011	4875	ALAPIS (CR)	0.041	---	0.041	30/03/2012	---	---	---	---	---	---	---	---	---	---	---	2,010.23	0.041	0.041	4577	
5,025,000	0.300	---	---	---	05/07/2005	14/03/2002	5023	ALSINCO S.A (CR)	0.043	---	0.043	27/11/2013	---	---	---	---	---	---	---	---	---	---	---	---	216.08	0.043	0.043	3763

Number of Outstanding Securities	Nominal Value	Dividends [1]			Date of Last Coupon		Note	Shares	Closing price	% change	Previous closing price/date	Open price	Price min	Price max	Last price	Avg price	Last Bid [7]	Last Ask [7]	P/E after	Year	Volume	Trades	Transactions Value	Company Mkt Value (thou. €)	Year low	Year high	Sector [4]
1,750,955,549	0.600	---	---	---	19/05/2008	08/12/2011	4911	ATE (CR)	0.155	---	0.155	30/07/2012	---	---	---	---	---	---	---	---	---	---	---	271,398.11	0.155	0.155	8355
21,382,067	0.300	---	---	---	02/10/2006	15/02/2006	4628	ATERMON (CR)	0.120	---	0.120	31/03/2010	---	---	---	---	---	---	---	---	---	---	---	2,565.85	0.120	0.120	5555
105,423,498	0.510	---	---	---	01/07/2004	28/12/2005	4920	AVENIR S.A. (CR)	0.046	---	0.046	30/08/2012	---	---	---	---	---	---	---	---	---	---	---	4,849.48	0.046	0.046	5752
33,930,000	0.300	---	---	---	03/07/2006	30/05/2001	4865	BABIS VOVOS SA (CR)	0.304	---	0.304	30/03/2012	---	---	---	---	---	---	---	---	---	---	---	10,314.72	0.304	0.304	8633
20,121,710	1.21	---	---	---	27/07/1992	12/03/2003	5002	BALKAN R.E. (CR)	0.190	---	0.190	29/08/2013	---	---	---	---	---	---	---	---	---	---	---	3,823.12	0.190	0.190	8633
1,795,140,547	1.00	---	---	---	31/05/2011	19/04/2012	4951	BANK OF CYPRUS (CR)	0.207	---	0.207	15/03/2013	---	---	---	---	---	---	---	---	---	---	---	371,594.09	0.207	0.207	8355
21,920,570	0.300	---	---	---	03/07/2007	13/12/1999	4702	CARDASSILARIS SA (CR)	0.140	---	0.140	30/11/2010	---	---	---	---	---	---	---	---	---	---	---	3,068.88	0.140	0.140	3577
54,547,634	0.500	---	---	---	25/04/2005	21/01/2009	4860	CH.TEGOPOULOS PUBL. SA (CR)	0.038	---	0.038	23/03/2012	---	---	---	---	---	---	---	---	---	---	---	2,072.81	0.038	0.038	5557
7,847,611	1.20	---	---	---	01/08/2007	28/09/2011	4939	EDRASIS - C. PSALLIDAS SA (CR)	0.150	---	0.150	19/11/2012	---	---	---	---	---	---	---	---	---	---	---	1,177.14	0.150	0.150	2357
5,750,000	0.300	---	---	---	12/12/2008	12/12/2011	4929	ELECTRONIKI ATHINON SA (CR)	0.480	---	0.480	07/09/2012	---	---	---	---	---	---	---	---	---	---	---	2,760.00	0.480	0.480	5375
24,605,397	0.400	---	---	---	29/06/1995	27/05/2002	4651	EMPORIKOS DESMOS SA (CR)	0.080	---	0.080	28/05/2010	---	---	---	---	---	---	---	---	---	---	---	2,134.04	0.080	0.080	3722
1,182,903	0.400	---	---	---	01/07/1996	27/05/2002	4652	EMPORIKOS DESMOS SA (PR)	0.140	---	0.140	28/09/2009	---	---	---	---	---	---	---	---	---	---	---	2,134.04	0.140	0.140	3722
8,593,750	0.300	---	---	---	01/06/2009	20/06/2007	4876	FASHION BOX (CR)	1.30	---	1.30	23/02/2012	---	---	---	---	---	---	---	---	---	---	---	11,171.88	1.30	1.30	3763
7,326,648	1.00	---	---	---	26/07/2006	24/07/2001	4921	FINTEXPORT SA (CR)	0.328	---	0.328	29/06/2012	---	---	---	---	---	---	---	---	---	---	---	2,403.14	0.328	0.328	3763
20,860,000	0.300	---	---	---	03/07/2000	13/11/2007	4848	IKONA - IHOS SA (CR)	0.072	---	0.072	02/12/2011	---	---	---	---	---	---	---	---	---	---	---	1,501.92	0.072	0.072	5379
36,765,744	0.350	---	---	---	16/08/2006	06/06/2011	4869	IMPERIO SA (CR)	0.026	---	0.026	30/03/2012	---	---	---	---	---	---	---	---	---	---	---	955.91	0.026	0.026	2777
24,619,524	0.500	---	---	---	10/10/1986	30/12/2002	4914	KERAMIA-ALLATINI (CR)	0.088	---	0.088	27/08/2012	---	---	---	---	---	---	---	---	---	---	---	2,166.52	0.088	0.088	8633
7,840,373	1.20	---	---	---	18/07/2002	05/03/2003	4765	KLONATEX SA (PR)	0.080	---	0.080	09/05/2011	---	---	---	---	---	---	---	---	---	---	---	1,453.75	0.080	0.080	3763
20,663,047	1.20	---	---	---	21/08/2000	05/03/2003	4764	KLONATEX SA (CR)	0.040	---	0.040	09/05/2011	---	---	---	---	---	---	---	---	---	---	---	1,453.75	0.040	0.040	3763
17,544,600	0.600	---	---	---	03/07/2000	01/08/2000	4868	KOYMBAS SYNERGY GROUP (CR)	0.132	---	0.132	29/03/2012	---	---	---	---	---	---	---	---	---	---	---	2,315.89	0.132	0.132	8775
15,015,000	1.60	---	---	---	01/07/2002	02/02/2000	4603	MAXIM C.M. PERTSINIDIS SA (CB)	0.100	---	0.100	30/11/2009	---	---	---	---	---	---	---	---	---	---	---	1,501.50	0.100	0.100	3763
66,937,526	0.700	---	---	---	13/08/2010	21/05/2003	5003	MICHANIKI SA (CR)	0.100	---	0.100	29/08/2013	---	---	---	---	---	---	---	---	---	---	---	9,186.78	0.100	0.100	2357
25,968,987	0.700	---	---	---	13/08/2010	21/05/2003	5004	MICHANIKI SA (PR)	0.096	---	0.096	29/08/2013	---	---	---	---	---	---	---	---	---	---	---	9,186.78	0.096	0.096	2357
13,555,100	1.00	---	---	---	08/07/2005		4576	MICROLAND COMPUTERS SA (CR)	0.640	---	0.640	14/07/2009	---	---	---	---	---	---	---	---	---	---	---	8,675.26	0.640	0.640	5379
23,463,874	0.800	---	---	---	23/05/2003	21/12/1999	4918	NEORION SA (CR)	0.125	---	0.125	28/08/2012	---	---	---	---	---	---	---	---	---	---	---	2,932.98	0.125	0.125	2753
42,501,273	0.300	---	---	---	26/06/2007	10/08/2009	4993	NUTRIART (CR)	0.049	---	0.049	21/06/2013	---	---	---	---	---	---	---	---	---	---	---	2,082.56	0.049	0.049	3577
25,583,146	0.300	---	---	---	25/06/2001	03/12/2008	4723	PETZETAKIS SA (CR)	0.260	---	0.260	28/01/2011	---	---	---	---	---	---	---	---	---	---	---	6,651.62	0.260	0.260	1357
9,550,386	0.500	---	---	---	01/07/1997	12/06/2008	4626	PRAXITELIO SA (CR)	0.390	---	0.390	11/03/2010	---	---	---	---	---	---	---	---	---	---	---	4,430.09	0.390	0.390	4533
1,306,368	0.500	---	---	---	01/07/1997	12/06/2008	4627	PRAXITELIO SA (PR)	0.540	---	0.540	15/12/2009	---	---	---	---	---	---	---	---	---	---	---	4,430.09	0.540	0.540	4533
62,683,822	0.300	---	---	---	27/05/2008	09/01/2006	4830	PROTON BANK S.A. (CR)	0.180	---	0.180	07/10/2011	---	---	---	---	---	---	---	---	---	---	---	11,283.09	0.180	0.180	8355
23,059,688	0.660	---	---	---	03/07/2008	06/08/2004	4864	RIDENCO SA (CR)	0.032	---	0.032	30/03/2012	---	---	---	---	---	---	---	---	---	---	---	737.91	0.032	0.032	3765
51,334,286	0.320	---	---	---	03/07/2000	18/12/2007	4548	SAOS (CR)	0.780	---	0.780	27/03/2009	---	---	---	---	---	---	---	---	---	---	---	40,040.74	0.780	0.780	2773
26,408,040	0.300	---	---	---	01/07/1997	26/05/1999	4464	SHEET STEEL SA (CR)	0.120	---	0.120	28/11/2008	---	---	---	---	---	---	---	---	---	---	---	3,168.96	0.120	0.120	1757
60,221,300	0.400	---	---	---	01/07/2002	01/11/2010	5022	SHELMAN SA (CR)	0.080	---	0.080	19/11/2013	---	---	---	---	---	4000@0.070	---	---	---	---	---	4,817.70	0.080	0.080	2353
26,262,660	0.900	---	---	---	01/07/2008	24/02/2011	4954	SPRIDER STORES (CR)	0.031	---	0.031	28/03/2013	---	---	---	---	---	---	---	---	---	---	---	814.14	0.031	0.031	5371
144,688,060	0.600	---	---	---	21/04/2008	10/03/2010	4982	T BANK (CR)	0.048	---	0.048	30/11/2011	---	---	---	---	---	---	---	---	---	---	---	6,945.03	0.048	0.048	8355
6,523,780	0.530	---	---	---	01/07/2002	06/03/2001	4971	TECHNICAL PUBLICATIONS SA (CR)	0.006	---	0.006	29/05/2013	---	---	---	---	---	---	---	---	---	---	---	39.14	0.006	0.006	5557
13,920,000	0.320	---	---	---	19/11/2001	01/08/2000	4726	TEXAPRET SA (CR)	0.080	---	0.080	23/02/2011	---	---	---	---	---	---	---	---	---	---	---	1,113.60	0.080	0.080	3763



Number of Outstanding Securities	Nominal Value	Dividends [1]			Date of Last Coupon		Note	Shares	Closing price	% change	Previous closing price/date	Open price	Price min	Price max	Last price	Avg price	Last Bid [7]	Last Ask [7]	P/E after	Year	Volume	Trades	Transactions Value	Company Mkt Value (thou. €)	Year low	Year high	Sector[ 4]
		2011	2012	2013	Dividend [2]	Right																					
<b>Under Suspension</b>																											
510,840	1.00	---	---	---	15/07/2008	21/11/2013	5036	TROPEA HOLDING (CR)	2.00	---	↘	0.020	# 30/03/2012	---	---	---	---	---	---	---	---	---	---	1,021.68	0.020	2.00	3722
284,465,964	3.70	---	---	---	20/06/2008	15/06/2009	4913	TT HELLENIC POSTBANK (CR)	0.168	---	↘	0.168	30/08/2012	---	---	---	---	---	---	---	---	---	---	47,790.28	0.168	0.168	8355
89,616,200	0.300	---	---	---	21/08/2000	28/06/2007	4616	UNITED TEXTILES (CR)	0.050	---	↘	0.050	25/02/2010	---	---	---	---	---	---	---	---	---	---	4,480.81	0.050	0.050	3763
71,683,906	0.400	---	---	---	15/06/2005	05/02/2008	4953	XATZIOANNOU (CR)	0.026	---	↘	0.026	28/03/2013	---	---	---	---	---	---	---	---	---	---	1,863.78	0.026	0.026	3763

Shares' Notes

Code	Note text
( )	- Adjusted dividends.
*	- Last adjusted closing price.
[1]	- Net dividends.
[2]	- The "Date of Last Coupon" for New listings refers to the date company's stocks started to trade in Athex
[3]	- The Company Market Value is referred to the number of outstanding shares
[4]	- Sectors codification can be found in Appendix A
[5]	- The Market Value refers to the total number of shares listed (including their several classes) in the exchange by the company.
[6]	- P/E greater than 100
[7]	- Last view of the Order Book before the end of the trading session
4446	- Transfer to the "Under Supervision" Category as of 20/10/2008.
4447	- Transfer to the "Under Supervision" Category as of 21/10/2008.
4464	- Suspension of trading as of 1/12/2008.
4548	- Suspension of trading as of 1/4/2009.
4554	- Transfer to the "Under Supervision" Category as of 6/4/2009.
4559	- Transfer to the "Under Supervision" Category as of 21/4/2009.
4576	- Suspension of trading as of 14/7/2009.
4603	- Suspension of trading as of 1/12/2009.
4616	- Suspension of trading as of 25/2/2010.
4626	- Suspension of trading as of 1/4/2010.
4627	- Suspension of trading as of 1/4/2010.
4628	- Suspension of trading as of 1/4/2010.
4629	- Transfer to the Under Supervision Category as of 12/4/2010.
4630	- Transfer to the Under Supervision Category as of 12/4/2010.
4651	- Suspension of trading as of 1/6/2010.
4652	- Suspension of trading as of 1/6/2010.
4690	- Transfer to Surveillance category as of 4/4/2006.
4702	- Suspension of trading as of 1/12/2010.
4723	- Suspension of trading as of 31/1/2011.
4726	- Suspension of trading as of 1/3/2011.
4750	- Transfer to the "Under Surveillance Category" from 8/4/2011.
4764	- Suspension of trading as of 20/5/2011.
4765	- Suspension of trading as of 20/5/2011.
4795	- The final gross (pre-tax) dividend is € 0.30 per share and subject to withholding tax on the full dividend amount, i.e. 0,45 per share, for those shareholders liable to withholding tax, in accordance with the applicable tax law provisions.
4808	- Suspension of trading as of 6/9/2011.
4814	- Transfer to the Low Dispersion Category as of 30/5/2011.
4815	- Transfer to the Low Dispersion Category as of 30/5/2011.
4816	- Transfer to the Low Dispersion Category as of 30/5/2011.
4817	- Transfer to the Low Dispersion Category as of 30/5/2011.
4820	- Transfer to the Low Dispersion category as of 18/4/2008.
4822	- Transfer to the Low Dispersion category as of 30/5/2011.
4823	- Transfer to the Low Dispersion category as of 4/4/2006.
4827	- Transfer to the Low Dispersion category as of 5/5/2010.
4830	- Suspension of trading as of 10/10/2011.
4833	- Transfer to Surveillance category from 6/5/2010.
4844	- Transfer to the Surveillance category from 8/4/2011.
4845	- Transfer to the Surveillance Category as of 25/11/2011.
4847	- Transfer to the Surveillance Category as of 3/7/2009.
4848	- Suspension of trading as of 6/12/2011.
4854	- Transfer to the Surveillance Category as of 29/12/2011.
4855	- Transfer to the Surveillance Category as of 29/12/2011.
4856	- Transfer to the Surveillance Category as of 29/12/2011.

Shares' Notes

Code	Note text
4860	- Suspension of trading as of 30/3/2012.
4864	- Suspension of trading as of 30/3/2012.
4865	- Suspension of trading as of 2/4/2012.
4868	- Suspension of trading as of 2/4/2012.
4869	- Suspension of trading as of 2/4/2012.
4875	- Suspension of trading as of 2/4/2012.
4876	- Suspension of trading as of 3/4/2012.
4879	- Transfer to the Surveillance Category as of 10/4/2012.
4881	- Transfer to the Surveillance Category as of 10/4/2012.
4882	- Transfer to the Surveillance Category as of 10/4/2012.
4884	- Transfer to the Surveillance Category as of 10/4/2012.
4885	- Transfer to the Surveillance Category as of 10/4/2012.
4886	- Transfer to the Surveillance Category as of 10/4/2012.
4887	- Transfer to the Surveillance Category as of 10/4/2012.
4888	- Transfer to the Surveillance Category as of 10/4/2012.
4911	- Lift of suspension from 30/7/2012.
4912	- Transfer to the Surveillance Category as of 31/7/2012.
4913	- Suspension of trading as of 30/8/2012.
4914	- Suspension of trading as of 31/8/2012.
4918	- Suspension of trading as of 31/8/2012.
4920	- Suspension of trading as of 31/8/2012.
4921	- Suspension of trading as of 31/8/2012.
4929	- Suspension of trading as of 1/10/2012.
4937	- Transfer to the UNDER DELETION category as of 30/11/2012.
4938	- Transfer to the UNDER DELETION category as of 30/11/2012.
4939	- Suspension of trading as of 30/11/2012.
4944	- Transfer to the Surveillance Category as of 7/12/2012.
4951	- Suspension of trading as of 19/3/2013.
4953	- Suspension of trading as of 2/4/2013.
4954	- Suspension of trading as of 2/4/2013.
4955	- Transfer to the Surveillance Category as from 5/4/2013.
4956	- Transfer to the Surveillance Category as from 5/4/2013.
4957	- Transfer to the Surveillance Category as from 5/4/2013.
4958	- Transfer to the Surveillance Category as from 5/4/2013.
4959	- Transfer to the Surveillance Category as from 5/4/2013.
4960	- Transfer to the Surveillance Category as from 5/4/2013.
4961	- Transfer to the Surveillance Category as from 5/4/2013.
4962	- Transfer to the Surveillance Category as from 5/4/2013.
4971	- Suspension of trading as of 3/6/2013.
4977	- Transfer to the "Under Surveillance Category" from 11/6/2013.
4978	- Transfer to the Under Supervision Category as of 11/6/2013.
4982	- Suspension of trading as of 1/12/2011.
4983	- Transfer to the Surveillance Category as of 5/4/2013.
4985	- Transfer to the "Under Surveillance Category" from 8/4/2011.
4986	- Transfer to the Low Dispersion category as of 30/5/2011.
4988	- As of June 7, 2013, the name of the company "DUTY FREE SHOPS A CORPORATION OPERATING DFS AND LARGE AND SMALL SCALE INDUSTRIAL OPERATIONS, TECHNIC" on ATHEX changes to "FOLLI FOLLIE S.A.".
4993	- Suspension of trading as of 21/6/2013 (15:18).
4997	- Transfer to the Under Supervision Category as of 21/12/2009. - The 6,870,053 new (CB) shares, resulting from the recent share capital increase through a rights issue, are not yet admitted to trading on the ATHEX.
5002	- Suspension of trading as of 30/08/2013.
5003	- Suspension of trading as of 30/08/2013.
5004	- Suspension of trading as of 30/08/2013.

## Shares' Notes

Code	Note text
5006	- Transfer to the Surveillance Category as of 3/9/2013.
5007	- Transfer to the Surveillance category, as of 11/10/2013.
5008	- Transfer to the Surveillance Category from 8/4/2011.
5022	- Suspension of trading as of 2/12/2013.
5023	- Suspension of trading as of 2/12/2013.
5031	- The 612,300 new (CR) shares, resulting from the recent share capital increase through a rights issue, are not yet admitted to trading on the ATHEX.
5033	- Transfer to the Surveillance Category as of 25/11/2011. The 97,144,575 new (CR) shares, resulting from the recent share capital increase through a rights issue, are not yet admitted to trading on the ATHEX.
5036	- The company's share is under suspension of trading as of 2/4/2012. During suspension, the company proceeded and concluded a share reverse split, according to which - after the conclusion of the corporate action - the total number of the company's shares, as well as, the last closing price of 30/03/2012 were adjusted.
5040	- Transfer to the Low Dispersion category as of 8/4/2011. Share capital increase in progress through a rights issue. Rights' trading period on ATHEX: 28/2/2014 - 10/3/2014, pre-emption rights' subscription period: 28/2/2014 - 14/3/2014.
5041	- Shares' reverse split in progress. Temporary suspension of trading: 4/3/2014. Start date of trading of the 3,400,000 (CR) shares is set at 10/3/2014. The 27,200,000 new (CR) shares, resulting from the recent share capital increase through a rights issue, are not yet admitted to trading on the ATHEX.

Securities Blocks Details

Securities	Block Volume	Price	Block Trade Value	Time of approval	Note
PIRAEUS BANK (W)	500,000	0.980	490,000.00	10:43:11	20
PIRAEUS BANK (W)	466,000	0.980	456,680.00	10:54:17	20
LAMDA DEVELOPMENT SA (CR)	50,000	6.17	308,500.00	12:59:07	20
TITAN CEMENT (CR)	98,052	22.85	2,240,488.20	14:26:00	20
OPAP (CR)	100,000	11.70	1,170,000.00	14:26:48	20
PIRAEUS BANK (CR)	15	2.02	30.30	14:29:03	18
FOURLIS (CR)	250,000	5.91	1,477,500.00	15:29:46	20
FOLLI FOLLIE (CR)	12,000	25.27	303,240.00	16:10:59	20
TITAN CEMENT (CR)	100,000	23.02	2,302,000.00	16:23:19	20
PIRAEUS BANK (CR)	270,000	2.09	564,300.00	17:10:34	20

Blocks Notes

2 - SPOT 1 or SPOT 2 Packet	11 - Total Assets > 500 bil
3 - Block with Short Selling	12 - Sell Offer through Athex
4 - Buy to Close Block	13 - Forced Sale of NMOE
6 - Simultaneous Constitution	14 - Restoration Packet
7 - Repurchase Agreement	15 - Market Maker Packet
8 - Dispersion's Achievement (Not Listed)	16 - Short Selling
9 - Dispersion's Achievement (Listed)	18 - SPOT 1 Packet
10 - Share Capital Majority of Greek State (> 50 bil)	20 - Method 6-1 Packet

## Shares Rights Details

Occured date	Exercise from	Exercise until	Trading until	Rights	Price min	Price max	Closing price	Last Bid	Last Ask	Volume	Trades	Transactions Value
24/02/2014	28/02/2014	14/03/2014	10/03/2014	MINOAN LINES S.A. (CR)	0.001	0.001	0.001	...	357@0.001	250	2	0.25

## Stock Borrowing

Securities	Stock Borrowing through Helex (volume)	Stock Borrowing through OTC (volume) [1]	Totals [2]
ALAPIS (CR)	---	6,250	6,250
ALPHA BANK (CR)	12,153,300	4,245,401	16,398,701
ATE (CR)	---	69,000	69,000
BANK OF CYPRUS (CR)	---	102,899	102,899
CC HBC AG (CR)	8,300	83,176	91,476
CORINTH PIPEWORKS SA (CR)	1,600	---	1,600
EUROBANK ERGASIAS (CR)	107,600	68,406	176,006
EUROBANK PROPERTIES REIC (CR)	1,200	21,856	23,056
EYDAP S.A. (CR)	2,400	---	2,400
FOLLI FOLLIE (CR)	26,800	---	26,800
GEK TERNA (CR)	200	10,000	10,200
HELLENIC EXCHANGES-A.S.E. (CR)	18,100	---	18,100
HELLENIC PETROLEUM (CR)	62,400	165,402	227,802
INTRALOT (CR)	15,600	---	15,600
JUMBO SA (CR)	5,100	---	5,100
LAMDA DEVELOPMENT SA (CR)	---	10,377	10,377
MARFIN INVESTMENT GROUP (CR)	16,000	728,474	744,474
METKA (CR)	12,600	---	12,600
MOTOR OIL (CR)	24,100	34,000	58,100
MYTILINEOS HOLDINGS (CR)	21,900	---	21,900
NATIONAL BANK (CR)	1,125,900	644,966	1,770,866
NBGAM ETF	10,000	---	10,000
NBGAM ETF GREECE & TURKEY 30	3,600	---	3,600
OPAP (CR)	54,400	40,000	94,400
OTE (CR)	51,900	218,542	270,442
P.P.A. S.A. (CR)	2,200	---	2,200
PIRAEUS BANK (CR)	754,000	44,003	798,003
PPC (CR)	64,700	---	64,700
SIDENOR (CR)	2,500	---	2,500
TITAN CEMENT (CR)	77,700	54	77,754

## Stock Borrowing Notes

[1] - The information concerning OTC Stock Borrowing Transactions is based on the statements of the Dematerialised Securities System (DSS) operators involved and refers to volumes that have been cleared and registered up until the previous working day.

---

**Shares Forced Sales**

---

Securities	Transaction s Volume	Number of Trades	Transactions Value	Note
<b>No Forced Transactions.</b>				

---

---

**Forced Sales Notes**

---

- 1 - Normal Forced Sale.
- 2 - Forced Sales of Fixed Registered Shares.
- 3 - Forced Sales of Remaining Stock Fractions.



**Forced Sales Registered Shares**

Securities	Start Date	End Date	Initial Volume	Remaining Volume	Date	Avg price (day)	Avg price (period)	Number of Trades	Transactions Volume	Transactions Value
------------	------------	----------	----------------	------------------	------	-----------------	--------------------	------------------	---------------------	--------------------

No Fixed Registered Shares Forced Sales.

**Forced Sales Notes**

According to Decision 1/380/04.05.2008 of the Hellenic Republic Capital Market Commission, the certificated registered shares that have not been deposited to the issuer for dematerialisation, will be auctioned in the Athens Exchange by the supervising issuer. Forced sales procedure is held according to Article 99A of the Athens Exchange Rulebook. The average price of the period is calculated by dividing the Total transactions value by the Total volume and includes all the transactions made until the current date.

## Exchange Traded Funds (ETFs) Characteristics

	Transactions Date (T)	Creation / Redemption	Units (T-1)	New Units (T-1)	Redemption Units (T-1)	Units (T) [1]	Fund Assets [2]	Net Unit Price	Dividend per	Dividend Date
NBGAM ETF ΓΔ Χ.Α.	05/03/2014	25,000	294,878	---	---	294,878	4,292,168.00	14.5557	---	27/10/2011
ALPHA ETF FTSE Athex Large Cap	05/03/2014	50,000	5,848,618	---	---	5,848,618	24,925,670.00	4.2618	0.05	01/07/2013
NBGAM ETF GREECE & TURKEY 30	05/03/2014	25,000	388,550	---	---	388,550	2,771,373.00	7.1326	---	27/10/2011

## ETFs Notes

[1] - Units (T) = Units (T-1) + New Units (T-1) - Redemption Units (T-1)

[2] - The Creation / Redemption Units of T-1 are included.

## Corporate Bonds

Num Listed Bonds	Nominal price	Issue price	Today's Rate	Exp. Date	Duration (years)	Note	Coupon attached		Trading	Corporate Bonds	Price min	Price max	Closing price	Previous closing		Volume	Transactions Value	Last order			ear min	Year max
							Common	Preferred						price/date	Price			Buy / Sell	Date			
4,150,176	4.77	4.77	5.00	19/03/2015	5	---	16	---	1	MARFIN INVESTMENT GROUP S.A. (Conver to CR shar)	---	---	---	62.5250	20/02/2014	---	---	60.0000	B	05/03/2014	62.5251	91.0000
1,794,284	12.49	9.77	5.22	12/07/2015	8	---	16	---	1	NIREUS S.A. (Convertible to CR shares)	---	---	---	12.0000	29/01/2014	---	---	30.0000	B	05/03/2014	12.0000	12.0000
212,849,265	1.00	1.00	6.30	29/07/2020	7	---	3	---	1	MARFIN INVESTMENT GROUP S.A. SERIES B (BOND)	---	---	---	0.8500	23/08/2013	---	---	0.6660	S	05/03/2014	0.8500	0.8500
2,156,827	1.00	1.00	7.00	29/07/2019	6	---	3	---	1	MARFIN INVESTMENT GROUP S.A. SERIES A (BOND)	---	---	---	1.0000	23/08/2013	---	---	1.1110	B	28/02/2014	1.0000	1.0000

## Corporate Bonds Notes

Transactions Volume = (Pieces) \* (Nominal Price). Transactions Value = (Pieces) \* (Nominal Price) \* (price %) + (Accrued interest).

The price of a Bond is stated as a percentage (%) of Bond's Nominal Price.

Nominal Price in Euros (€), except if it is noted differently.

## Government Bonds

Number Listed Bonds	Nominal price	Today's Rate	Accrued Interest Calc	Exp. Date [1]	Duration (years)	Note	Coupons Date	Curr. coupon value	Trading Unit	Government Bonds	Price min	Price max	Closing price	Previous closing price/date	Volume	Transactions Value	Price	Last order Buy / Sell	Date
2,658,781,973	1.00	4.30	Actual/Actual	24/02/2023	11	---	24/02	4.30	1	GGB-FXD-240223-11Y-2.000-1.00	---	---	---	---	---	---	---	---	---
2,658,781,973	1.00	4.30	Actual/Actual	24/02/2024	12	---	24/02	4.30	1	GGB-FXD-240224-12Y-2.000-1.00	---	---	---	---	---	---	---	---	---
2,658,781,973	1.00	4.30	Actual/Actual	24/02/2025	13	---	24/02	4.30	1	GGB-FXD-240225-13Y-2.000-1.00	---	---	---	---	---	---	---	---	---
2,658,781,973	1.00	4.30	Actual/Actual	24/02/2026	14	---	24/02	4.30	1	GGB-FXD-240226-14Y-2.000-1.00	---	---	---	---	---	---	---	---	---
2,658,781,973	1.00	4.30	Actual/Actual	24/02/2027	15	---	24/02	4.30	1	GGB-FXD-240227-15Y-2.000-1.00	---	---	---	---	---	---	---	---	---
2,836,034,104	1.00	4.30	Actual/Actual	24/02/2028	16	---	24/02	4.30	1	GGB-FXD-240228-16Y-2.000-1.00	---	---	---	---	---	---	---	---	---
2,836,034,104	1.00	4.30	Actual/Actual	24/02/2029	17	---	24/02	4.30	1	GGB-FXD-240229-17Y-2.000-1.00	---	---	---	---	---	---	---	---	---
2,836,034,104	1.00	4.30	Actual/Actual	24/02/2030	18	---	24/02	4.30	1	GGB-FXD-240230-18Y-2.000-1.00	---	---	---	---	---	---	---	---	---
2,836,034,104	1.00	4.30	Actual/Actual	24/02/2031	19	---	24/02	4.30	1	GGB-FXD-240231-19Y-2.000-1.00	---	---	---	---	---	---	---	---	---
2,836,034,104	1.00	4.30	Actual/Actual	24/02/2032	20	---	24/02	4.30	1	GGB-FXD-240232-20Y-2.000-1.00	---	---	---	---	---	---	---	---	---
2,836,034,104	1.00	4.30	Actual/Actual	24/02/2033	21	---	24/02	4.30	1	GGB-FXD-240233-21Y-2.000-1.00	---	---	---	---	---	---	---	---	---
2,836,034,104	1.00	4.30	Actual/Actual	24/02/2034	22	---	24/02	4.30	1	GGB-FXD-240234-22Y-2.000-1.00	---	---	---	---	---	---	---	---	---
2,836,034,104	1.00	4.30	Actual/Actual	24/02/2035	23	---	24/02	4.30	1	GGB-FXD-240235-23Y-2.000-1.00	---	---	---	---	---	---	---	---	---
2,836,034,104	1.00	4.30	Actual/Actual	24/02/2036	24	---	24/02	4.30	1	GGB-FXD-240236-24Y-2.000-1.00	---	---	---	---	---	---	---	---	---
2,836,034,104	1.00	4.30	Actual/Actual	24/02/2037	25	---	24/02	4.30	1	GGB-FXD-240237-25Y-2.000-1.00	---	---	---	---	---	---	---	---	---
2,836,034,104	1.00	4.30	Actual/Actual	24/02/2038	26	---	24/02	4.30	1	GGB-FXD-240238-26Y-2.000-1.00	---	---	---	---	---	---	---	---	---
2,836,034,104	1.00	4.30	Actual/Actual	24/02/2039	27	---	24/02	4.30	1	GGB-FXD-240239-27Y-2.000-1.00	---	---	---	---	---	---	---	---	---
2,836,034,104	1.00	4.30	Actual/Actual	24/02/2040	28	---	24/02	4.30	1	GGB-FXD-240240-28Y-2.000-1.00	---	---	---	---	---	---	---	---	---
2,836,034,104	1.00	4.30	Actual/Actual	24/02/2041	29	---	24/02	4.30	1	GGB-FXD-240241-29Y-2.000-1.00	---	---	---	---	---	---	---	---	---
2,836,034,104	1.00	4.30	Actual/Actual	24/02/2042	30	---	24/02	4.30	1	GGB-FXD-240242-30Y-2.000-1.00	---	---	---	---	---	---	---	---	---
1,500,000	1,000.00	0.97	FLR Actual/360	10/08/2014	5	---	10/02 - 10/08	---	1	GGB-FRN-100814-05Y-1.762-1000.00	---	---	---	---	---	---	---	---	---
5,187,186	1,000.00	1.60	FLR Actual/360	21/05/2014	5	---	21/11 - 21/05	---	1	GGB-FRN-210514-05Y-2.734-1000.00	---	---	---	---	---	---	---	---	---
78,300	1,000.00	1.16	FLR Actual/360	23/07/2014	5	---	23/01 - 23/07	---	1	GGB-FRN-230714-05Y-2.018-1000.00	---	---	---	---	---	---	---	---	---

## Government Bonds Notes

Transactions Volume = (Pieces) \* (Nominal Price). Transactions Value = (Pieces) \* (Nominal Price) \* (price %) + (Accrued interest).

The Value of current coupon for the issues with NV 0.01 euro refers to NV 100 euros

FLR: Floating Interest Rate.

[1] - The Expiration Date of the interest bearing period and the Date for coupon payment.

Bonds in Circulation	Currency / Min nominal traded Value	Coupons Payment Date	Current Coupon Value	Note	Coupon Attached	Trading Unit	Issue Date	Duration (years)	Today's Interest	A.I.C in days	Bonds	Last price of previous days	Last Outcry in Cash (euro) Price	Buy / Sell	Date	Trades in Pieces	Life min	Life Max	
<b>Bonds of International Organizations</b>																			
1,000,000	EUR / 1000	21/07	---	---	8	1	21/07/2006	10	5.0 FLR	360	EUROPEAN INVESTMENT BANK BOND	97.50	16/04/2007	---	---	---	---	---	
<b>Corporate Bonds in Foreign Currency and Euro</b>																			
103,746	GBP / 10	01/12	0.25	---	55	1	01/12/1930	98	2.5	360	National Mortgage Bank	2.27	05/02/1996	2.27	S	05/02/1996	---	2.27	2.27
0	GBP / 10	01/12	0.25	---	57	1	01/12/1928	100	2.5	360	National Mortgage Bank	---	---	---	---	---	---	---	---

**Government Bonds Notes**

A.I.C: Accrued Interest Calculation base.

FLR: Floating Interest Rate.

The minimum tradeable Nominal Value for all Demeterialised Government Titles is 100 Euros.

## State Banks Bonds (one year maturity)

Number Listed Bonds	Nominal value	Initial Rate	Current Rate	Annual Interest	Issue Date	Note	State Banks Bonds	Trading Unit	Yearly Renewals	Last Outcry in Cash (euro)		Volume
										Price	Buy / Sell	
342,560	135.17	2.35	3.92	0.00	31/01/2005	---	H.I.D.B.	1	10	100.00	B	---
2,446	1,154.00	4.90	2.47	28.96	31/05/2008	---	H.I.D.B.	1	6	---	---	---
171,117	1,163.28	5.50	2.47	29.19	31/05/2008	---	H.I.D.B.	1	6	---	---	---
63,787	1,129.20	5.45	2.47	30.88	31/08/2008	---	H.I.D.B.	1	6	---	---	---

## Bonds Notes

The annual renewal of H.I.D.B. Bonds is free of taxes (net rate).  
For Bonds issue until 31/12/2013 the accrued interest is capitalized.

**Athex & ATHEXClear Members List**

Member Name	Stock Market			Derivatives Market			ATHEXClear Member					
	Address	Phone	Fax	Market Member	Remote Member	Market Maker	Proprietary	Market Maker	Agent	General Clearing	Direct Clearing	Non Clearing
<b>A. SARRIS SECURITIES S.A.</b>				a								
6, DRAGATSANIOU STR. ATHINA	(210)-3367700	(210)-3312324										
<b>AGRICULTURAL BANK OF GREECE S.A.</b>								a			a	
, 23 PANEPISTIMIOU ATHINA	(210)-3298400	(210)-3298322										
<b>ALPHA FINANCE INVESTMENT SERVICES S.A.</b>				a		a		a			a	
5, MERLIN STR. ATHINA	(210)-3677400	(210)-3311193										
<b>ALPHA BANK A.E.</b>							a			a		
40, STADIOU STR ATHINA	(210)-3265546	(210)-3265811										
	(210)-3260000	(210)-3264116										
<b>ARGUS STOCKBROKERS LTD</b>				a	a							
12-14, KENNEDY AVE. S. 303 NICOSIA	(+35722)-22717000	(+35722)-22717070										
<b>ATHENAIKI BROKERAGE FIRM S.A.</b>				a								
33, STADIOU STR. ATHINA	(210)-3254764	(210)-3254767										
<b>ATLANTIC SECURITIES LIMITED</b>				a	a							
37, PRODROMOU STR. NICOSIA	(+35722)-445400	(+35722)-661914										
<b>ATLAS SECURITIES S.A</b>				a			a					a
14 - 16, VERVENON STR.& 125 MICHALAKOPOULOU STR. ATHINA	(210)-3363300	(210)-3238925										
<b>ATTICA BANK S.A.</b>										a		
23, OMIROU STR. ATHINA	(210)-3669000	(210)-3669410										
54, AKADIMIAS STR. ATHINA	(210)-3390757	(210)-3646090										
<b>AXIA VENTURES GROUP LTD</b>				a	a							
10, G. KRANIDIOTI NICOSIA	+357 22 742000	+357 22 742001										
<b>AXON SECURITIES S.A.</b>				a			a					a
48, STADIOU ATHINA	(210)-3363800	(210)-3243903										
<b>BANK OF CYPRUS PUBLIC COMPANY LTD</b>										a		
170, ALEXANDRAS AVE ATHINA	(210)-6477708	(210)-6477709										
, 51, STASINOU (AG. PARASKEVI, STROVOLOS) NICOSIA	(0035722)-121883	(0035722)-336258										
<b>BETA SECURITIES S.A.</b>				a		a	a	a			a	
, BRAILA & 29 ALEXANDRAS AVE ATHINA	(210)-6478900	(210)-6410139										
<b>BNP PARIBAS SECURITIES SERVICES</b>										a		
94, VAS. SOFIAS AVE ATHINA	(210)-7468500	(210)-7468579										
<b>CAPITAL SECURITIES S.A.</b>				a			a					a
58, MITROPOLEOS STR. ATHINA	(210)-3369700	(210)-3369820										
<b>CFS SECURITIES &amp; INVESTMENT SERVICES S.A.</b>				a		a			a		a	
3, STADIOU STR. ATHINA	(210)-3360800	(210)-3311854										
<b>CITIGROUP GLOBAL MARKET LTD</b>				a	a							
, CITIGROUP CENTRE, CANADA SQUARE, CANARY WHART LONDON	002079864000	002079862266										
<b>CO-OPERATIVE CENTRAL BANK LTD</b>				a	a							
8, GRIGORI AFXENTIOU STR. NICOSIA	(+35722)-743300	(+35722)-672083										
<b>CREDIT AGRICOLE CHEUVREUX S.A.</b>					a							
, 9 QUAI PAUL DOUMER PARIS	33 (0) 1 41 89 70 00											
<b>CREDIT SUISSE SECURITIES (EUROPE) LIMITED</b>				a	a							
, ONE CABOT SQUARE LONDON	+44 20 7888 8888	+44 20 7888 1600										
<b>CYCLOS SECURITIES S.A.</b>				a		a	a				a	
39, PANEPISTIMIOU STR. ATHINA	(210)-3364300	(210)-3239122										
<b>D.A. TSEKOURAS SEC. S.A.</b>				a								
3, PESMAZOGLOU STR. ATHINA	(210)-3214406	(210)-3211997										
<b>DEUTSCHE BANK A.G.</b>				a	a							
70, THEODOR-HEUSS-ALLEE FRANKFURT	0049 69 910 00	0049 69 910 34 225										
<b>DYNAMIC SECURITIES</b>				a					a		a	
6 - 10, CHAR. TRIKOUPPI STR. ATHINA	(210)-3677700	(210)-3677777										
<b>EL. PETROPOULAKIS SECURITIES S.A.</b>				a					a			a
9, ARISTIDOU STR. ATHINA	(210)-3213928	(210)-3216810										
<b>EUROBANK EQUITIES S.A.</b>				a		a		a			a	
10, FILELLINON STR. ATHINA	(210)-3720000	(210)-3720001										
<b>EUROBANK ERGASIAS S.A.</b>										a		
8, OTHONOS STR. ATHINA	(210)-3337969	(210)-3245916										
	(210)-3337000	(210)-3233866										
<b>EUROCORP SECURITIES S.A.</b>				a			a				a	
14, FILIKIS ETAIRIAS SQ. ATHINA	(210)-7263500	(210)-7263666										
<b>EUOTRUST BROKERAGE S.A.</b>				a								
13-15, SOPHOCLEOUS STR. ATHINA	(210)-3363100	(210)-3238334										

Athex & ATHEXClear Members List

Member Name			Stock Market			Derivatives Market			ATHEXClear Member		
Address	Phone	Fax	Market Member	Remote Member	Market Maker	Proprietary	Market Maker	Agent	General Clearing	Direct Clearing	Non Clearing
EUROXX SECURITIES S.A.			a			a				a	
7, PALAIOLOGOU STR. CHALANDRI				(210)-6879400	(210)-6879401						
G.A. PERVANAS SECURITIES & INVESTMENT SERVICES CO S.A.			a			a					a
7 - 9, SOPHOCLEOUS STR. ATHINA				(210)-3251875	(210)-3210291						
GENERAL BANK OF GREECE S.A.									a		
87-89, ERMOY ATHINA				(210)-6976072	(210)-6976079						
, 109-111, MESOGEION AVE. ATHINA				(210)-3288737	(210)-3288211						
GLOBAL CAPITAL SECURITIES AND FINANCIAL SERVICES LTD			a	a							
5, LEMESOU AVE. LEMESOS CYPRUS				(+35722)-710710	(+35722)-339332						
GUARDIAN TRUST SECURITIES S.A			a		a	a					a
15, FILELLINON STR. ATHINA				(210)-3220402	(210)-3220498						
HELLENIC AMERICAN SEC. S.A.			a			a					
6, EVRIPIDOU STR. ATHINA				(210)-3311100	(210)-3215968						
HELLENIC BANK (INVESTMENTS) LTD			a	a							
31, KYRIAKOY MATSI AVE. NICOSIA				(+35722)-500100	(+35722)-500110						
HSBC BANK PLC									a		
109-111, MESOGION AVE ATHINA				(210)-6961507	(210)-6929310						
INDEX SECURITIES S.A.			a								
6, DRAGATSANIOU STR. ATHINA				(210)-3213920	(210)-3213216						
INTERSEC S.A.						a				a	
80-88, SYGROU AVE ATHINA				(210)-9203000	(210)-9203052						
INVESTMENT BANK OF GREECE S.A.			a		a		a		a		
32, AIGEIALIAS MAROUSI				(210) 8173000	(210) 8173101						
24B, KIFISSIAS AVE MAROUSI				(210)-8171800	(210)-8171889						
J. CHR. MAVRIKIS SECURITIES S.A.			a								
5, SOPHOCLEOUS STR. ATHINA				(210)-3213949	(210)-3217767						
KAPPA SECURITIES S.A.			a			a					a
15, VALAORITOU STR. ATHINA				(210)-3610371	(210)-3641002						
KYPROU SECURITIES S.A.			a		a	a					a
26, HALKIDONOS & FIDIPPIDOY STR. ATHINA				(210)-8701000	(210)-8701049						
LAIKI FINANCIAL SERVICES LTD			a	a							
26, CLR HOUSE, VIROPOS AVE. NICOSIA				(+35722)-898600	(+35722)-680953						
LEON DEPOLAS SECURITIES S.A.			a					a			a
1, CHR. LADA STR. ATHINA				(210)-3213286	(210)-3211618						
MAGNA TRUST SECURITIES S.A			a					a			a
9, FIDIOU STR. ATHINA				(210)-3327503	(210)-3327599						
MEGA EQUITY SECURITIES & FINANCIAL SERVICES LTD			a	a							
42-44, GRIBA DIGENI AV. NICOSIA				(+35722)-711711	(+35722)-711811						
MERIT SECURITIES S.A			a		a	a				a	
38, VAS. KONSTANTINOY STR. ATHINA				(210)-3671800	(210)-3671830						
MERRILL LYNCH			a	a							
2, KING EDWARD STREET LONDON				(+4420)-79952000	(+4420)-79954525						
METOCHIKI SECURITIES S.A.			a								
3, G. GENNADIOY STR. ATHINA				(210)-3306700	(210)-3306709						
MIDAS BROKERAGE S.A.			a								
5, SOPHOCLEOUS STR. ATHINA				(210)-3253203	(210)-3253205						
N. CHRYSOCHOIDIS STOCK BROKERAGE I.S.S.A.			a					a		a	
7 - 9, SOPHOCLEOUS STR. ATHINA				(210)-3213913	(210)-3216115						
N. SARROS SECURITIES S.A.						a					
7-9, SOPHOCLEOUS STR. ATHINA				(210)-3705600	(210)-3219992						
NATIONAL BANK OF GREECE / FORMER PROBANK			a								
10, AMERIKIS STR. ATHINA				(210)-3392631	(210)-3392646						
NATIONAL BANK OF GREECE S.A.							a		a		
86, AILOU STR. ATHINA				(210)-3341000	(210)-3228187						
68, AKADIMIAS STR. ATHINA				(210)-3328817	(210)-3328678						
NBG SECURITIES S.A.			a		a		a				a
68, AKADIMIAS STR. ATHINA				(210)-3328500	(210)-3328565						
NEW PROTON BANK S.A.						a				a	
20, ESLIN & AMALIADOS ATHINA				210 6970000	210 6970111						
NUNTIUS SECURITIES S.A			a					a			a
6, DRAGATSANIOU STR. ATHINA				(210)-3350599	(210)-3254846						
ORANGE PARTNERS SECURITIES S.A			a								
5, TZORTZ STR. ATHINA				(210)-3300009	(210)-3305240						



**Athex & ATHEXClear Members List**

Member Name	Stock Market			Derivatives Market			ATHEXClear Member					
	Address	Phone	Fax	Market Member	Remote Member	Market Maker	Proprietary	Market Maker	Agent	General Clearing	Direct Clearing	Non Clearing
<b>PANTELAKIS SEC. S.A.</b>				a			a					a
109-111, MESOGION AVE. ATHINA	(210)-6965000	(210)-6929550										
<b>PEGASUS BROKERAGE FIRM S.A.</b>				a			a					
17, VALAORITOU STR. ATHINA	(210)-3670700	(210)-3670760										
<b>PIRAEUS BANK S.A.</b>									a	a		
4, AMERIKIS STR ATHINA	(210)-3335918	(210)-3254207										
4, AMERIKIS STR. ATHINA	(210)-3335000	(210)-3335079										
<b>PIRAEUS SECURITIES S.A.</b>				a				a			a	
10, STADIU STR. ATHINA	(210)-3354100	(210)-3233814										
<b>PRELIUM SECURITIES &amp; INVESTMENT SERVICES S.A.</b>				a			a					a
, KIFISSIAS AVE & 1 DAVAKI STR ATHINA	(210)-3677000	(210)-6920403										
<b>PROCHOICE SECURITIES LTD</b>				a	a							
57, SPYROU KYPRIANOY NICOSIA	+357-24-661192	+357-24-662464										
<b>SHARELINK SECURITIES &amp; FINANCIAL SERVICES LTD</b>				a	a							
6, ELLINAS HOUSE, THEOTOKI STR. NICOSIA	(+35722)-554200	(+35722)-750852										
<b>SOCIETE GENERALE S.A.</b>				a	a		a					
17, COURS VALMY PUTEAUX - LA DEFENSE PARIS	(+33) 142134754	(+33) 142135697										
240-242, KIFISSIAS AVE ATHINA	(210)-6790161	(210)-6728828										
<b>SOLIDUS SECURITIES S.A.</b>				a			a				a	
64, LOUIZIS RIANKOUR STR. ATHINA	(210)-6925500	(210)-6985421										
<b>SOTIRIADIS SECURITIES S.A.</b>				a								
7, VALAORITOU STR. ATHINA	(210)-3636943	(210)-3601943										
<b>ST. EM. LAVRENTAKIS SECURITIES S.A.</b>				a			a					a
7 - 9, SOPHOCLEOUS STR. ATHINA	(210)-3213336	(210)-3246572										
<b>THE CYPRUS INVESTMENT AND SECURITIES CORPORATION LIMITED (CISCO)</b>				a	a							
4, EVROU STR. (EUROLIFE HOUSE) NICOSIA	(+35722)-881800	(+35722)-881801										
<b>UBS LIMITED</b>				a	a							
1, FINSBURY AVENUE LONDON	(+4420)-79013333	(+4420)-79012345										
<b>Z.G. PORTALAKIS INVESTMENT SERVICES S.A.</b>				a								
8, PESMAZOGLU STR. ATHINA	(210)-3214830	(210)-3212024										
<b>KARAMANOF SECURITIES &amp; INV. SERVICES S.A.</b>				a					a		a	
2, SQ. ST THEODORON ATHINA	(210)-3212947	(210)-3217088										

List of Stocks under Market Making operations

Securities	Market Maker	Stock Category	
		Start Market Making	End Market Making
<b>CYPRUS POPULAR BANK (CR)</b>			Under Suspension
PIRAEUS SECURITIES S.A.		02/02/2013	01/01/2400
<b>VIOHALCO (CB)</b>			Under Suspension
ALPHA FINANCE INVESTMENT SERVICES S.A.		11/02/2013	01/01/2400
EUROBANK EQUITIES S.A.		20/01/2013	01/01/2400
MERIT SECURITIES S.A.		13/12/2012	01/01/2400
<b>ALPHA BANK (CR)</b>			Main Market
EUROBANK EQUITIES S.A.		24/10/2012	01/01/2400
INVESTMENT BANK OF GREECE S.A.		08/01/2013	01/01/2400
MERIT SECURITIES S.A.		03/09/2013	01/01/2400
NBG SECURITIES S.A.		15/01/2013	01/01/2400
PIRAEUS SECURITIES S.A.		28/05/2013	01/01/2400
<b>ALUMIL (CR)</b>			Main Market
BETA SECURITIES S.A.		18/07/2013	01/01/2400
<b>BYTE COMPUTER SA (CR)</b>			Main Market
MERIT SECURITIES S.A.		04/08/2013	01/01/2400
<b>CC HBC AG (CR)</b>			Main Market
EUROBANK EQUITIES S.A.		23/10/2013	01/01/2400
NBG SECURITIES S.A.		29/04/2013	01/01/2400
<b>ELLAKTOR (CR)</b>			Main Market
EUROBANK EQUITIES S.A.		01/06/2013	01/01/2400
INVESTMENT BANK OF GREECE S.A.		02/01/2013	01/01/2400
NBG SECURITIES S.A.		25/06/2013	01/01/2400
<b>ELTON SA (CR)</b>			Main Market
BETA SECURITIES S.A.		03/09/2013	01/01/2400
<b>EUROBANK ERGASIAS (CR)</b>			Main Market
ALPHA FINANCE INVESTMENT SERVICES S.A.		08/01/2013	01/01/2400
EUROBANK EQUITIES S.A.		01/06/2013	01/01/2400
INVESTMENT BANK OF GREECE S.A.		08/01/2013	01/01/2400
PIRAEUS SECURITIES S.A.		28/09/2013	01/01/2400
<b>FOLLI FOLLIE (CR)</b>			Main Market
NBG SECURITIES S.A.		17/02/2014	01/01/2400
<b>FRIGOGLASS SA (CR)</b>			Main Market
EUROBANK EQUITIES S.A.		23/08/2013	01/01/2400
<b>GEK TERNA (CR)</b>			Main Market
INVESTMENT BANK OF GREECE S.A.		02/01/2013	01/01/2400
<b>GR. SARANTIS SA (CR)</b>			Main Market
BETA SECURITIES S.A.		14/05/2013	01/01/2400
<b>HELLENIC EXCHANGES-A.S.E. (CR)</b>			Main Market
EUROBANK EQUITIES S.A.		01/06/2013	01/01/2400
INVESTMENT BANK OF GREECE S.A.		02/01/2013	01/01/2400
NBG SECURITIES S.A.		25/06/2013	01/01/2400
<b>INTRACOM CONSTR. (CR)</b>			Main Market
MERIT SECURITIES S.A.		27/12/2012	01/01/2400
<b>INTRALOT (CR)</b>			Main Market
EUROBANK EQUITIES S.A.		01/06/2013	01/01/2400
INVESTMENT BANK OF GREECE S.A.		02/01/2013	01/01/2400
PIRAEUS SECURITIES S.A.		28/09/2013	01/01/2400
<b>MARFIN INVESTMENT GROUP (CR)</b>			Main Market
PIRAEUS SECURITIES S.A.		02/02/2013	01/01/2400
<b>MLS MULTIMEDIA SA (CR)</b>			Main Market
BETA SECURITIES S.A.		18/07/2013	01/01/2400
<b>MOTOR OIL (CR)</b>			Main Market
EUROBANK EQUITIES S.A.		23/10/2012	01/01/2400
NBG SECURITIES S.A.		17/02/2014	01/01/2400
<b>MYTILINEOS HOLDINGS (CR)</b>			Main Market
INVESTMENT BANK OF GREECE S.A.		02/01/2013	01/01/2400
NBG SECURITIES S.A.		25/06/2013	01/01/2400
<b>NATIONAL BANK (CR)</b>			Main Market
ALPHA FINANCE INVESTMENT SERVICES S.A.		08/01/2013	01/01/2400
EUROBANK EQUITIES S.A.		24/10/2012	01/01/2400
INVESTMENT BANK OF GREECE S.A.		08/01/2013	01/01/2400
MERIT SECURITIES S.A.		03/09/2013	01/01/2400
NBG SECURITIES S.A.		28/02/2013	01/01/2400
PIRAEUS SECURITIES S.A.		08/09/2013	01/01/2400

List of Stocks under Market Making operations

Securities	Market Maker	Stock Category	
		Start Market Making	End Market Making
<b>OPAP (CR)</b>			<b>Main Market</b>
ALPHA FINANCE INVESTMENT SERVICES S.A.		08/01/2013	01/01/2400
EUROBANK EQUITIES S.A.		24/10/2012	01/01/2400
INVESTMENT BANK OF GREECE S.A.		08/01/2013	01/01/2400
NBG SECURITIES S.A.		15/01/2013	01/01/2400
<b>OTE (CR)</b>			<b>Main Market</b>
ALPHA FINANCE INVESTMENT SERVICES S.A.		08/01/2013	01/01/2400
EUROBANK EQUITIES S.A.		24/10/2012	01/01/2400
INVESTMENT BANK OF GREECE S.A.		08/01/2013	01/01/2400
NBG SECURITIES S.A.		01/12/2012	01/01/2400
PIRAEUS SECURITIES S.A.		08/09/2013	01/01/2400
<b>PAPOUTSANIS (CR)</b>			<b>Main Market</b>
BETA SECURITIES S.A.		25/11/2013	01/01/2400
<b>PETROPOULOS PETROS (CR)</b>			<b>Main Market</b>
BETA SECURITIES S.A.		28/05/2013	01/01/2400
<b>PIRAEUS BANK (CR)</b>			<b>Main Market</b>
EUROBANK EQUITIES S.A.		23/10/2012	01/01/2400
INVESTMENT BANK OF GREECE S.A.		08/01/2013	01/01/2400
MERIT SECURITIES S.A.		16/09/2013	01/01/2400
NBG SECURITIES S.A.		02/06/2013	01/01/2400
PIRAEUS SECURITIES S.A.		16/02/2013	01/01/2400
<b>PPC (CR)</b>			<b>Main Market</b>
ALPHA FINANCE INVESTMENT SERVICES S.A.		08/01/2013	01/01/2400
EUROBANK EQUITIES S.A.		23/10/2012	01/01/2400
INVESTMENT BANK OF GREECE S.A.		08/01/2013	01/01/2400
NBG SECURITIES S.A.		26/03/2013	01/01/2400
PIRAEUS SECURITIES S.A.		28/09/2013	01/01/2400
<b>S.KANAKIS SA (CR)</b>			<b>Main Market</b>
BETA SECURITIES S.A.		01/10/2013	01/01/2400
<b>TITAN CEMENT (CR)</b>			<b>Main Market</b>
EUROBANK EQUITIES S.A.		23/10/2012	01/01/2400
NBG SECURITIES S.A.		17/02/2014	01/01/2400
<b>VIOHALCO SA/NV (CB)</b>			<b>Main Market</b>
ALPHA FINANCE INVESTMENT SERVICES S.A.		17/02/2014	01/01/2400

Equity Investment Instruments Acknowledgements

Portfolio Investments Company Name	NAV per Share	Share Price	Premium/ Discount
AEOLIAN INVESTMENT FUND S.A.	1.60	0.96	-40.00%
ALPHA TRUST ANDROMEDA SA	28.93	21.45	-25.86%

Acknowledgements Notes

According to the Decision of the Capital Market Commission 4/278/12.08.2003 Portfolio Investment Companies are required to notify the Athens Exchange on the 10th, 20th and last working day of each month the Net Asset Value (NAV) of their shares as well as Premium or Discount in relation to their market value.

Underlying Asset				Derivatives Market																			
Price max	Price min	Closing price	change	Delivery Month	Open price	Price max	Price min	Last price	Closing price	Last Bid	Last Ask	Settlement price	change	Life high	Life low	Trades	Volume	change	Value	change	Open Interest	change	
(Trade Unit: 1 Index Point x 5€, Cash Settlement)																							
431.55	421.98	425.95	-0.48%	FTSE/Athex Large Cap	March 2014	427.25	432.00	421.25	425.50	427.25	50@425.25	12@426.00	427.25	-0.41%	433.75	363.75	614	7,615	44.44%	16,232,235.00	45.89%	48,786	-0.62%
					April 2014	429.00	432.75	424.00	426.75	429.50	50@426.25	1@427.00	429.50	-0.12%	432.75	370.50	69	946	209.15%	2,019,292.50	208.57%	2,406	29.35%
					May 2014	428.50	428.50	428.50	428.50	429.75	1@423.25	1@428.25	429.75	-0.35%	428.75	418.00	1	3	-93.02%	6,427.50	-92.88%	160	0.00%
					June 2014	---	---	---	---	431.50	1@386.25	---	431.50	-0.40%	429.00	392.75	---	---	---	---	---	60	0.00%
					September 2014	---	---	---	---	435.50	---	---	435.50	-0.40%	390.00	390.00	---	---	---	---	---	1	0.00%
					December 2014	---	---	---	---	---	---	---	---	---	---	---	---	---	---	---	---	---	---

Underlying Asset				Derivatives Market																		
Price max	Price min	Closing price	change	Delivery Month	Open price	Price max	Price min	Last price	Closing price	Last Bid	Last Ask	Settlement price	change	Life high	Life low	Trades	Volume	change	Value	change	Open Interest	change
<b>ALPHA BANK (CR)</b>				(Contract Size: 100 Securities, Physical Delivery)																		
0.739	0.713	0.724	-1.09%	March 2014	0.720	0.725	0.700	0.705	0.711	14@0.705	2@0.711	0.711	-1.11%	0.733	0.564	76	997	-25.98%	70,833.50	-25.97%	28,098	0.69%
				June 2014	0.682	0.685	0.670	0.670	0.679	11@0.665	2@0.681	0.679	-0.15%	0.700	0.561	37	824	74.21%	55,762.80	72.77%	5,709	16.87%
				September 2014	---	---	---	---	0.720	---	50@0.710	0.720	-1.10%	0.726	0.672	---	---	---	---	---	300	0.00%
				December 2014	---	---	---	---	---	---	---	---	---	---	---	---	---	---	---	---	---	---
<b>CC HBC AG (CR)</b>				(Contract Size: 100 Securities, Physical Delivery)																		
18.64	18.30	18.41	0.55%	March 2014	18.40	18.56	18.40	18.40	18.50	6@18.35	1@18.49	18.50	0.54%	22.94	17.89	28	52	8.33%	96,082.00	10.43%	650	2.85%
				June 2014	---	---	---	---	18.65	1@18.25	1@18.62	18.65	0.54%	18.79	18.00	---	---	-100.00%	---	-100.00%	19	0.00%
				September 2014	---	---	---	---	---	---	---	---	---	---	---	---	---	---	---	---	---	---
				December 2014	---	---	---	---	---	---	---	---	---	---	---	---	---	---	---	---	---	---
<b>CORINTH PIPEWORKS SA (CR)</b>				(Contract Size: 100 Securities, Physical Delivery)																		
2.15	2.02	2.15	5.91%	March 2014	2.08	2.12	2.08	2.11	2.14	3@2.10	1@2.13	2.14	5.94%	2.32	1.76	21	143	1330.00%	30,051.00	1398.06%	542	-0.91%
				June 2014	---	---	---	---	---	2@1.95	1@2.18	---	---	---	---	---	---	---	---	---	---	---
				September 2014	---	---	---	---	---	---	---	---	---	---	---	---	---	---	---	---	---	---
				December 2014	---	---	---	---	---	---	---	---	---	---	---	---	---	---	---	---	---	---
<b>ELLAKTOR (CR)</b>				(Contract Size: 100 Securities, Physical Delivery)																		
4.01	3.86	3.95	-1.25%	March 2014	3.97	4.00	3.88	3.94	3.94	2@3.92	11@3.95	3.94	-0.51%	4.00	2.22	31	122	-32.22%	48,115.00	-30.90%	1,903	3.09%
				June 2014	---	---	---	---	---	2@3.89	11@3.99	---	---	---	---	---	---	---	---	---	---	---
				September 2014	---	---	---	---	---	---	---	---	---	---	---	---	---	---	---	---	---	---
				December 2014	---	---	---	---	---	---	---	---	---	---	---	---	---	---	---	---	---	---
<b>EUROBANK ERGASIAS (CR)</b>				(Contract Size: 100 Securities, Physical Delivery)																		
0.471	0.454	0.455	1.11%	March 2014	0.470	0.471	0.462	0.462	0.462	10@0.457	10@0.461	0.462	1.09%	0.673	0.440	13	492	-57.44%	23,068.40	-56.49%	4,011	-0.67%
				June 2014	---	---	---	---	0.472	27@0.452	10@0.471	0.472	1.07%	0.802	0.450	---	---	-100.00%	---	-100.00%	66	0.00%
				September 2014	---	---	---	---	---	---	---	---	---	---	---	---	---	---	---	---	---	---
				December 2014	---	---	---	---	---	---	---	---	---	---	---	---	---	---	---	---	---	---
<b>EUROBANK PROPERTIES REIC (CR)</b>				(Contract Size: 120 Securities, Physical Delivery)																		
8.48	8.14	8.26	-3.95%	March 2014	8.44	8.44	8.22	8.23	8.34	1@8.23	2@8.68	8.34	-3.92%	8.44	6.39	19	29	141.67%	28,870.80	139.51%	189	-1.56%
				June 2014	---	---	---	---	---	---	---	---	---	---	---	---	---	---	---	---	---	---
				September 2014	---	---	---	---	---	---	---	---	---	---	---	---	---	---	---	---	---	---
				December 2014	---	---	---	---	---	---	---	---	---	---	---	---	---	---	---	---	---	---
<b>EYDAP S.A. (CR)</b>				(Contract Size: 100 Securities, Physical Delivery)																		
8.47	8.21	8.39	0.48%	March 2014	8.44	8.45	8.26	8.39	8.44	5@8.27	30@8.40	8.44	0.48%	8.70	7.08	19	47	-44.05%	39,353.00	-43.54%	1,335	0.30%
				June 2014	---	---	---	---	8.50	---	30@8.46	8.50	0.47%	8.32	7.98	---	---	-100.00%	---	-100.00%	12	0.00%
				September 2014	---	---	---	---	---	---	---	---	---	---	---	---	---	---	---	---	---	---
				December 2014	---	---	---	---	---	---	---	---	---	---	---	---	---	---	---	---	---	---
<b>FOLLI FOLLIE (CR)</b>				(Contract Size: 100 Securities, Physical Delivery)																		
25.58	24.45	25.27	0.24%	March 2014	25.50	25.50	24.55	25.20	25.49	1@24.79	1@25.50	25.49	0.24%	27.00	22.02	23	104	593.33%	258,872.00	591.43%	212	23.26%
				June 2014	25.29	25.30	24.94	24.94	25.85	1@25.00	1@25.71	25.85	0.74%	25.30	24.17	3	6	50.00%	15,141.00	49.64%	21	40.00%
				September 2014	---	---	---	---	---	---	---	---	---	---	---	---	---	---	---	---	---	---
				December 2014	---	---	---	---	---	---	---	---	---	---	---	---	---	---	---	---	---	---

Underlying Asset				Derivatives Market																		
Price max	Price min	Closing price	change	Delivery Month	Open price	Price max	Price min	Last price	Closing price	Last Bid	Last Ask	Settlement price	change	Life high	Life low	Trades	Volume	change	Value	change	Open Interest	change
<b>FRIGOGLASS SA (CR)</b>				(Contract Size: 100 Securities, Physical Delivery)																		
4.82	4.61	4.80	4.35%	March 2014	4.65	4.75	4.60	4.75	4.73	5@4.75	1@4.79	4.73	4.42%	5.72	4.17	17	55	71.88%	25,675.00	73.42%	1,159	-1.78%
				June 2014	---	---	---	---	---	1@4.02	1@4.85	---	---	---	---	---	---	---	---	---	---	---
				September 2014	---	---	---	---	---	---	---	---	---	---	---	---	---	---	---	---	---	---
				December 2014	---	---	---	---	---	---	---	---	---	---	---	---	---	---	---	---	---	---
<b>GEK TERNA (CR)</b>				(Contract Size: 100 Securities, Physical Delivery)																		
3.88	3.78	3.80	-2.31%	March 2014	3.80	3.88	3.80	3.81	3.84	14@3.80	7@3.84	3.84	-1.03%	3.89	2.26	52	221	-75.90%	84,674.00	-75.82%	31,879	0.26%
				June 2014	---	---	---	---	3.85	3@3.76	7@3.88	3.85	-1.03%	3.74	3.17	---	---	-100.00%	---	-100.00%	100	0.00%
				September 2014	3.80	3.80	3.79	3.79	3.83	---	---	3.83	-1.03%	3.80	3.72	2	50	-50.00%	18,985.00	-50.04%	400	-11.11%
				December 2014	---	---	---	---	---	---	---	---	---	---	---	---	---	---	---	---	---	---
<b>HELLENIC EXCHANGES-A.S.E. (CR)</b>				(Contract Size: 100 Securities, Physical Delivery)																		
8.51	8.32	8.45	1.56%	March 2014	8.41	8.50	8.35	8.43	8.44	4@8.43	30@8.45	8.44	1.20%	8.89	6.87	61	199	-23.75%	167,847.00	-22.45%	2,429	-4.78%
				June 2014	8.40	8.41	8.39	8.40	8.42	4@8.41	2@8.49	8.42	1.69%	8.41	7.12	5	19	---	15,959.00	---	26	188.89%
				September 2014	---	---	---	---	8.42	---	---	8.42	1.20%	7.90	6.95	---	---	---	---	---	---	---
				December 2014	---	---	---	---	---	---	---	---	---	---	---	---	---	---	---	---	---	---
<b>HELLENIC PETROLEUM (CR)</b>				(Contract Size: 100 Securities, Physical Delivery)																		
7.30	7.10	7.30	2.82%	March 2014	7.17	7.34	7.13	7.33	7.30	6@7.28	12@7.34	7.30	2.82%	9.62	6.61	106	568	51.47%	409,412.00	54.95%	6,181	0.13%
				June 2014	---	---	---	---	7.35	1@7.11	12@7.40	7.35	2.80%	9.58	6.86	---	---	-100.00%	---	-100.00%	6	0.00%
				September 2014	---	---	---	---	---	---	---	---	---	---	---	---	---	---	---	---	---	---
				December 2014	---	---	---	---	---	---	---	---	---	---	---	---	---	---	---	---	---	---
<b>INTRALOT (CR)</b>				(Contract Size: 100 Securities, Physical Delivery)																		
2.28	2.20	2.25	2.27%	March 2014	2.25	2.29	2.24	2.25	2.26	2@2.25	10@2.26	2.26	2.26%	2.29	1.74	71	578	3.03%	130,708.00	5.49%	4,607	9.69%
				June 2014	2.30	2.30	2.28	2.28	2.29	2@2.16	10@2.29	2.29	1.78%	2.30	2.16	2	10	---	2,290.00	---	10	100.00%
				September 2014	---	---	---	---	---	---	---	---	---	---	---	---	---	---	---	---	---	---
				December 2014	---	---	---	---	---	---	---	---	---	---	---	---	---	---	---	---	---	---
<b>JUMBO SA (CR)</b>				(Contract Size: 104 Securities, Physical Delivery)																		
13.45	12.77	12.89	-1.98%	March 2014	13.44	13.44	12.80	12.80	12.94	1@12.78	3@13.07	12.94	-6.23%	13.66	10.11	29	104	395.24%	142,116.00	392.01%	383	-13.15%
				June 2014	---	---	---	---	---	2@12.81	---	---	---	---	---	---	---	---	---	---	---	---
				September 2014	---	---	---	---	---	---	---	---	---	---	---	---	---	---	---	---	---	---
				December 2014	---	---	---	---	---	---	---	---	---	---	---	---	---	---	---	---	---	---
<b>MARFIN INVESTMENT GROUP (CR)</b>				(Contract Size: 100 Securities, Physical Delivery)																		
0.498	0.479	0.498	3.53%	March 2014	0.484	0.498	0.478	0.494	0.494	5@0.494	6@0.496	0.494	3.35%	0.498	0.352	149	3,367	89.48%	164,152.50	96.35%	25,110	-0.03%
				June 2014	0.495	0.495	0.484	0.484	0.493	5@0.490	6@0.506	0.493	2.71%	0.495	0.443	2	2	---	97.90	---	2	100.00%
				September 2014	---	---	---	---	---	---	---	---	---	---	---	---	---	---	---	---	---	---
				December 2014	---	---	---	---	---	---	---	---	---	---	---	---	---	---	---	---	---	---
<b>METKA (CR)</b>				(Contract Size: 100 Securities, Physical Delivery)																		
13.50	13.14	13.20	-1.93%	March 2014	13.44	13.44	13.22	13.22	13.18	3@13.20	10@13.45	13.18	-1.93%	14.19	11.10	10	19	-51.28%	25,441.00	-51.12%	1,186	0.68%
				June 2014	13.10	13.10	13.10	13.10	13.05	5@13.05	10@13.56	13.05	-1.95%	13.91	11.41	1	1	---	1,310.00	---	10	11.11%
				September 2014	---	---	---	---	13.23	---	---	13.23	-1.93%	11.68	11.41	---	---	---	---	---	---	---
				December 2014	---	---	---	---	---	---	---	---	---	---	---	---	---	---	---	---	---	---

Underlying Asset				Derivatives Market																		
Price max	Price min	Closing price	change	Delivery Month	Open price	Price max	Price min	Last price	Closing price	Last Bid	Last Ask	Settlement price	change	Life high	Life low	Trades	Volume	change	Value	change	Open Interest	change
(Contract Size: 100 Securities, Physical Delivery)																						
9.86	9.55	9.86	0.82%	March 2014	9.82	9.85	9.57	9.85	9.77	1@9.61	1@9.85	9.77	-0.31%	9.85	7.95	44	119	-5.56%	115,328.00	-4.39%	960	-1.44%
				June 2014	---	---	---	---	9.70	1@8.80	1@9.91	9.70	-0.31%	8.79	8.59	---	---	---	---	---	---	---
				September 2014	---	---	---	---	---	---	---	---	---	---	---	---	---	---	---	---	---	---
				December 2014	---	---	---	---	---	---	---	---	---	---	---	---	---	---	---	---	---	---
(Contract Size: 100 Securities, Physical Delivery)																						
7.14	6.94	7.07	-0.28%	March 2014	7.11	7.12	6.95	7.00	7.07	5@7.00	15@7.05	7.07	-0.42%	7.13	4.43	121	748	-2.48%	524,638.00	-2.17%	12,794	-1.45%
				June 2014	7.02	7.10	7.00	7.06	7.10	1@6.81	15@7.10	7.10	0.00%	7.10	5.32	6	102	920.00%	71,737.00	943.60%	54	-25.00%
				September 2014	7.04	7.04	7.03	7.03	7.11	---	---	7.11	0.57%	7.04	5.86	4	50	---	35,188.00	---	---	-100.00%
				December 2014	---	---	---	---	---	---	---	---	---	---	---	---	---	---	---	---	---	---
(Contract Size: 100 Securities, Physical Delivery)																						
3.58	3.46	3.49	0.87%	March 2014	3.52	3.56	3.45	3.47	3.47	9@3.46	11@3.48	3.47	-0.29%	4.52	3.07	102	667	-7.62%	232,740.00	-6.61%	12,058	2.51%
				June 2014	3.44	3.44	3.41	3.41	3.45	9@3.41	111@3.47	3.45	-1.15%	4.50	3.21	4	16	220.00%	5,501.00	215.24%	384	4.35%
				September 2014	---	---	---	---	---	---	---	---	---	---	---	---	---	---	---	---	---	---
				December 2014	---	---	---	---	---	---	---	---	---	---	---	---	---	---	---	---	---	---
(Contract Size: 100 Securities, Physical Delivery)																						
11.85	11.60	11.68	-1.10%	March 2014	11.75	11.80	11.60	11.66	11.75	10@11.66	2@11.71	11.75	0.00%	11.86	8.98	88	526	-24.53%	616,502.00	-22.88%	2,978	0.10%
				June 2014	11.45	11.51	11.45	11.51	11.60	25@11.44	20@11.73	11.60	-1.28%	11.51	8.84	2	50	---	57,400.00	---	55	1000.00%
				September 2014	---	---	---	---	11.75	---	---	11.75	0.00%	10.86	9.63	---	---	---	---	---	200	0.00%
				December 2014	---	---	---	---	---	---	---	---	---	---	---	---	---	---	---	---	---	---
(Contract Size: 100 Securities, Physical Delivery)																						
12.90	12.50	12.50	-2.34%	March 2014	12.84	12.90	12.51	12.54	12.60	12@12.53	19@12.59	12.60	-1.56%	12.90	6.40	212	1,009	31.04%	1,285,037.00	31.98%	5,659	1.31%
				June 2014	---	---	---	---	12.54	12@12.47	19@12.63	12.54	-1.57%	12.82	8.31	---	---	-100.00%	---	-100.00%	37	0.00%
				September 2014	---	---	---	---	12.49	---	---	12.49	-1.58%	12.84	11.10	---	---	---	---	---	73	0.00%
				December 2014	---	---	---	---	---	---	---	---	---	---	---	---	---	---	---	---	---	---
(Contract Size: 100 Securities, Physical Delivery)																						
18.50	18.06	18.21	-0.60%	March 2014	18.32	18.32	18.12	18.20	18.18	4@18.20	1@18.34	18.18	-0.60%	19.83	16.30	9	23	-25.81%	41,841.00	-25.29%	711	0.99%
				June 2014	---	---	---	---	---	1@17.95	1@18.52	---	---	---	---	---	---	---	---	---	---	---
				September 2014	---	---	---	---	---	---	---	---	---	---	---	---	---	---	---	---	---	---
				December 2014	---	---	---	---	---	---	---	---	---	---	---	---	---	---	---	---	---	---
(Contract Size: 100 Securities, Physical Delivery)																						
2.11	2.00	2.09	0.00%	March 2014	2.07	2.10	1.99	2.08	2.08	15@2.07	106@2.08	2.08	0.00%	2.10	0.924	110	4,286	-29.48%	876,588.00	-28.52%	13,179	4.58%
				June 2014	2.05	2.05	1.97	2.03	2.07	1@2.00	25@2.04	2.07	0.49%	2.06	1.33	19	173	-40.14%	34,513.00	-39.99%	566	34.12%
				September 2014	---	---	---	---	2.10	---	---	2.10	0.00%	2.02	1.54	---	---	-100.00%	---	-100.00%	450	0.00%
				December 2014	---	---	---	---	---	---	---	---	---	---	---	---	---	---	---	---	---	---
(Contract Size: 100 Securities, Physical Delivery)																						
11.77	11.46	11.49	-0.26%	March 2014	11.69	11.75	11.46	11.51	11.55	1@11.50	2@11.52	11.55	-0.86%	11.96	6.30	157	844	-2.09%	978,872.00	-1.15%	6,532	2.66%
				June 2014	11.62	11.62	11.50	11.50	11.58	4@11.49	2@11.57	11.58	-1.03%	11.80	9.60	8	22	2100.00%	25,393.00	2094.73%	53	70.97%
				September 2014	---	---	---	---	11.57	---	---	11.57	-0.86%	11.67	9.70	---	---	-100.00%	---	-100.00%	220	0.00%
				December 2014	---	---	---	---	---	---	---	---	---	---	---	---	---	---	---	---	---	---



Underlying Asset				Derivatives Market																		
Price max	Price min	Closing price	change	Delivery Month	Open price	Price max	Price min	Last price	Closing price	Last Bid	Last Ask	Settlement price	change	Life high	Life low	Trades	Volume	change	Value	change	Open Interest	change
<b>SIDENOR (CR)</b>				(Contract Size: 100 Securities, Physical Delivery)																		
1.97	1.83	1.97	9.44%	March 2014	1.86	1.99	1.86	1.99	1.95	5@1.94	5@1.99	1.95	9.55%	1.99	1.51	56	411	1041.67%	78,664.00	1107.61%	1,134	1.70%
				June 2014	---	---	---	---	---	3@1.86	5@2.03	---	---	---	---	---	---	---	---	---	---	---
				September 2014	---	---	---	---	---	---	---	---	---	---	---	---	---	---	---	---	---	---
				December 2014	---	---	---	---	---	---	---	---	---	---	---	---	---	---	---	---	---	---
<b>TERNA ENERGY (CR)</b>				(Contract Size: 100 Securities, Physical Delivery)																		
4.65	4.51	4.54	-2.37%	March 2014	4.60	4.60	4.53	4.53	4.60	5@4.53	8@4.62	4.60	0.00%	4.85	3.40	19	66	-36.54%	30,189.00	-35.34%	2,904	-0.31%
				June 2014	---	---	---	---	4.64	1@4.28	8@4.66	4.64	0.00%	4.18	4.18	---	---	---	---	---	50	0.00%
				September 2014	---	---	---	---	---	---	---	---	---	---	---	---	---	---	---	---	---	---
				December 2014	---	---	---	---	---	---	---	---	---	---	---	---	---	---	---	---	---	---
<b>TITAN CEMENT (CR)</b>				(Contract Size: 100 Securities, Physical Delivery)																		
23.56	22.65	23.00	-1.03%	March 2014	23.23	23.35	22.87	23.02	22.72	1@22.82	1@23.38	22.72	-1.05%	24.00	18.01	17	33	83.33%	76,304.00	82.13%	652	-1.21%
				June 2014	---	---	---	---	22.73	4@22.77	1@23.51	22.73	-1.04%	23.81	21.64	---	---	-100.00%	---	-100.00%	3	0.00%
				September 2014	---	---	---	---	---	---	---	---	---	---	---	---	---	---	---	---	---	---
				December 2014	---	---	---	---	---	---	---	---	---	---	---	---	---	---	---	---	---	---
<b>VIOHALCO SA/NV (CB)</b>				(Contract Size: 100 Securities, Physical Delivery)																		
4.85	4.75	4.79	1.92%	March 2014	4.81	4.84	4.79	4.81	4.80	5@4.77	5@5.13	4.80	1.91%	4.84	4.67	7	18	-41.94%	8,668.00	-40.73%	45	45.16%
				June 2014	---	---	---	---	---	---	---	---	---	---	---	---	---	---	---	---	---	---
				September 2014	---	---	---	---	---	---	---	---	---	---	---	---	---	---	---	---	---	---
				December 2014	---	---	---	---	---	---	---	---	---	---	---	---	---	---	---	---	---	---

FTSE/Athex Large Cap

(Trade Unit: 1 Index Point x 5€ - Exercise Style: European, Cash Settlement)

Exercise Price	Call Options														Put Options																		
	March 2014							April 2014							Other Months		March 2014							April 2014							Other Months		Exercise Price
	Open price	Price max	Price min	Last price	Closing price	Volume	Open Interest	Open price	Price max	Price min	Last price	Closing price	Volume	Open Interest	Volume	Open Interest	Open price	Price max	Price min	Last price	Closing price	Volume	Open Interest	Open price	Price max	Price min	Last price	Closing price	Volume	Open Interest	Volume	Open Interest	
215	-	-	-	-	212.00	-	30	-	-	-	-	-	-	-	-	-	-	-	-	-	-	-	-	-	-	-	-	-	-	-	-	215	
255	-	-	-	-	-	-	-	-	-	-	-	-	-	-	-	-	-	-	-	-	-	-	-	-	-	-	-	-	-	-	-	255	
260	-	-	-	-	-	-	-	-	-	-	-	-	-	-	-	-	-	-	-	-	-	-	-	-	-	-	-	-	-	-	-	260	
265	-	-	-	-	-	-	-	-	-	-	-	-	-	-	-	-	-	-	-	-	-	-	-	-	-	-	-	-	-	-	-	265	
270	-	-	-	-	-	-	-	-	-	-	-	-	-	-	-	-	-	-	-	-	-	-	-	-	-	-	-	-	-	-	-	270	
275	-	-	-	-	-	-	-	-	-	-	-	-	-	-	-	-	-	-	-	-	-	-	-	-	-	-	-	-	-	-	-	275	
280	-	-	-	-	-	-	-	-	-	-	-	-	-	-	-	-	-	-	-	-	-	-	-	-	-	-	-	-	-	-	-	280	
285	-	-	-	-	-	-	-	-	-	-	-	-	-	-	-	-	-	-	-	-	-	-	-	-	-	-	-	-	-	-	-	285	
290	-	-	-	-	-	-	-	-	-	-	-	-	-	-	-	-	-	-	-	-	-	-	-	-	-	-	-	-	-	-	-	290	
295	-	-	-	-	-	-	-	-	-	-	-	-	-	-	-	-	-	-	-	-	-	-	-	-	-	-	-	-	-	-	-	295	
300	-	-	-	-	127.00	-	60	-	-	-	-	-	-	-	-	-	-	-	-	-	-	-	-	-	-	-	-	-	-	-	-	300	
305	-	-	-	-	-	-	-	-	-	-	-	-	-	-	-	-	-	-	-	-	-	-	-	-	-	-	-	-	-	-	-	305	
310	-	-	-	-	117.00	-	1	-	-	-	-	-	-	-	-	-	-	-	-	-	-	-	-	-	-	-	-	-	-	-	-	310	
315	-	-	-	-	-	-	-	-	-	-	-	-	-	-	-	-	-	-	-	-	-	-	-	-	-	-	-	-	-	-	-	315	
320	-	-	-	-	-	-	-	-	-	-	-	-	-	-	-	-	-	-	-	-	-	-	-	-	-	-	-	-	-	-	-	320	
325	-	-	-	-	-	-	-	-	-	-	-	-	-	-	-	-	-	-	-	-	-	-	-	-	-	-	-	-	-	-	-	325	
330	-	-	-	-	-	-	-	-	-	-	-	-	-	-	-	-	-	-	-	-	-	-	-	-	-	-	-	-	-	-	-	330	
335	-	-	-	-	-	-	-	-	-	-	-	-	-	-	-	-	-	-	-	-	-	-	-	-	-	-	-	-	-	-	-	335	
340	-	-	-	-	-	-	-	-	-	-	-	-	-	-	-	-	-	-	-	-	-	-	-	-	-	-	-	-	-	-	-	340	
345	-	-	-	-	-	-	-	-	-	-	-	-	-	-	-	-	-	-	-	-	-	-	-	-	-	-	-	-	-	-	-	345	
350	-	-	-	-	77.00	-	26	-	-	-	-	80.00	-	6	-	-	-	-	-	-	-	-	-	-	-	-	-	-	-	-	-	350	
355	-	-	-	-	-	-	-	-	-	-	-	-	-	-	-	-	-	-	-	-	-	-	-	-	-	-	-	-	-	1.20	30	355	
360	-	-	-	-	-	-	-	-	-	-	-	-	-	-	-	-	-	-	-	-	-	-	-	-	-	-	-	-	-	1.50	50	360	
365	-	-	-	-	-	-	-	-	-	-	-	-	-	-	-	-	-	-	-	-	-	-	-	-	-	-	-	-	-	-	-	365	
370	-	-	-	-	-	-	-	-	-	-	-	-	-	-	-	-	-	-	-	-	-	-	-	-	-	-	-	-	-	0.38	30	370	
375	-	-	-	-	-	-	-	-	-	-	-	-	-	-	-	-	-	-	-	-	-	-	-	-	-	-	-	-	-	0.59	70	375	
380	-	-	-	-	-	-	-	-	-	-	-	-	-	-	-	-	-	-	-	-	-	-	-	-	-	-	-	-	-	0.89	11	380	
385	-	-	-	-	-	-	-	-	-	-	-	-	-	-	-	-	-	-	-	-	-	-	-	-	-	-	-	-	-	1.30	285	385	
390	-	-	-	-	-	-	-	-	-	-	-	-	-	-	-	-	-	-	-	-	-	-	-	-	-	-	-	-	-	1.90	10	390	
395	-	-	-	-	34.75	-	2	-	-	-	-	-	-	-	-	-	-	-	-	-	-	-	-	-	-	-	-	-	-	2.60	391	395	
400	31.75	31.75	31.75	31.75	30.75	2	392	-	-	-	-	38.00	-	55	4.00	4.00	4.00	4.00	3.50	40	173	-	-	-	-	-	-	-	-	-	-	400	
405	27.75	27.75	27.75	27.75	27.00	1	551	-	-	-	-	-	-	-	5.00	5.50	4.00	5.00	4.70	799	840	-	-	-	-	-	-	-	-	10.25	200	405	
410	23.50	24.75	23.00	23.00	23.25	25	315	-	-	-	-	-	-	-	-	-	-	-	-	-	-	-	-	-	-	-	-	-	-	6.10	126	410	
415	15.00	19.00	15.00	19.00	20.00	8	32	27.00	27.00	27.00	27.00	28.50	2	8	-	-	-	-	7.80	-	36	-	-	-	-	-	-	-	-	-	-	415	
420	17.25	17.25	17.00	17.00	17.00	3	65	-	-	-	-	-	-	-	10.50	10.50	10.00	10.00	9.80	12	247	-	-	-	-	-	-	-	-	-	-	420	
425	-	-	-	-	14.25	-	31	-	-	-	-	-	-	-	11.00	13.00	10.00	11.00	12.00	381	331	-	-	-	-	-	-	-	-	-	-	425	

FTSE/Athex Large Cap

(Trade Unit: 1 Index Point x 5€ - Exercise Style: European, Cash Settlement)

Exercise Price	Call Options														Put Options										Exercise Price								
	March 2014							April 2014							Other Months		March 2014					April 2014					Other Months						
	Open price	Price max	Price min	Last price	Closing price	Volume	Open Interest	Open price	Price max	Price min	Last price	Closing price	Volume	Open Interest	Volume	Open Interest	Open price	Price max	Price min	Last price	Closing price	Volume	Open Interest	Open price		Price max	Price min	Last price	Closing price	Volume	Open Interest	Volume	Open Interest
430	12.25	12.25	9.00	12.00	12.00	1,335	2,234	-	-	-	-	-	-	-	-	-	14.00	14.00	14.00	14.00	14.75	1	1	-	-	-	-	-	-	-	-	-	430
435	8.50	9.50	8.50	9.50	9.80	11	37	-	-	-	-	-	-	-	-	-	-	-	-	-	17.50	-	1	-	-	-	-	-	-	-	-	-	435
440	-	-	-	-	-	-	-	-	-	-	-	-	-	-	-	-	-	-	-	-	20.75	-	70	-	-	-	-	-	-	-	-	-	440
445	-	-	-	-	6.40	-	56	-	-	-	-	-	-	-	-	-	-	-	-	-	-	-	-	-	-	-	-	-	-	-	-	-	445
Totals:						1,385	3,832					2	69	0	0							1,233	2,622					15	525	0	0		
Nominal Transactions Value:							2,974,350.00					4,150.00		0.00								2,534,950.00						30,750.00		0.00			
Number of Trades:							38					2		0								50					2		0				

ALPHA BANK (CR)

(Contract Size: 100 Securities, Exercise Style: American, Physical Delivery)

Exercise Price	Call Options														Put Options														Exercise Price					
	March 2014							April 2014							Other Months		March 2014							April 2014							Other Months			
	Open price	Price max	Price min	Last price	Closing price	Volume	Open Interest	Open price	Price max	Price min	Last price	Closing price	Volume	Open Interest	Volume	Open Interest	Open price	Price max	Price min	Last price	Closing price	Volume	Open Interest	Open price	Price max	Price min	Last price	Closing price		Volume	Open Interest	Volume	Open Interest	
0.100					-	-							-	-									-	-									0.100	
0.200					-	-							-	-									-	-									0.200	
0.300					-	-							-	-									-	-									0.300	
0.400					-	-							-	-									-	-									0.400	
0.450					-	-							-	-									-	-									0.450	
0.500					-	-							-	-									-	-									0.500	
0.550					-	-							-	-									-	-									0.550	
0.600					-	-							-	-									-	-									0.600	
0.650					-	-							-	-									-	-									0.650	
0.700					-	-							-	-									-	-									0.700	
0.750					-	-							-	-									-	-									0.750	
0.800					-	-							-	-									-	-									0.800	
0.850					-	-							-	-									-	-									0.850	
0.900					-	-							-	-									-	-									0.900	
1.00					-	-							-	-									-	-									1.00	
1.10					-	-							-	-									-	-									1.10	
Totals:					0	0							0	0								0	0									0	0	
Nominal Transactions Value:					0.00								0.00	0.00									0.00	0.00									0.00	0.00
Number of Trades:					0								0	0									0	0									0	0

NATIONAL BANK (CR)

(Contract Size: 100 Securities, Exercise Style: American, Physical Delivery)

Exercise Price	Call Options														Put Options														Exercise Price
	March 2014				April 2014				Other Months		March 2014				April 2014				Other Months										
	Open price	Price max	Price min	Last price	Closing price	Volume	Open Interest	Open price	Price max	Price min	Last price	Closing price	Volume	Open Interest	Volume	Open Interest	Open price	Price max	Price min	Last price	Closing price	Volume	Open Interest	Volume	Open Interest				
0.300						-	-																				0.300		
0.400						-	-																					0.400	
0.500						-	-																					0.500	
0.600						-	-																					0.600	
0.700						-	-																					0.700	
0.800						-	-																					0.800	
0.900						-	-																					0.900	
1.00						-	-																					1.00	
1.10						-	-																					1.10	
1.20						-	-																					1.20	
1.80						-	-																					1.80	
1.90						-	-																					1.90	
2.00						-	-																					2.00	
2.20						-	-																					2.20	
2.40						-	-																					2.40	
2.60						-	-																					2.60	
2.80						-	-																					2.80	
3.00						-	-																					3.00	
3.20						-	-																					3.20	
3.30						-	-																					3.30	
3.40						-	-																					3.40	
3.50						-	-																					3.50	
3.60						-	-																					3.60	
3.70						-	-																					3.70	
3.80						-	-																					3.80	
3.90						-	-																					3.90	
4.00						-	-																					4.00	
4.20						-	-																					4.20	
4.40						-	-																					4.40	
4.60					0.002	-	100																					4.60	
4.80						-	-																					4.80	
5.00						-	-																					5.00	
5.20						-	-																					5.20	
5.60						-	-																					5.60	
Totals:						0	100						0	0	0	10								0	0	0	0	0	
Nominal Transactions Value:							0.00						0.00	0.00		0.00								0.00	0.00		0.00	0.00	
Number of Trades:							0						0	0		0								0	0		0	0	

OPAP (CR)

(Contract Size: 100 Securities, Exercise Style: American, Physical Delivery)

Exercise Price	Call Options														Put Options														Exercise Price
	March 2014				April 2014				Other Months		March 2014				April 2014				Other Months										
	Open price	Price max	Price min	Last price	Closing price	Volume	Open Interest	Open price	Price max	Price min	Last price	Closing price	Volume	Open Interest	Volume	Open Interest	Open price	Price max	Price min	Last price	Closing price	Volume	Open Interest	Volume	Open Interest				
1.00						-	-																				1.00		
4.80						-	-																					4.80	
5.20						-	-																					5.20	
5.60						-	-																					5.60	
6.00						-	-																					6.00	
6.40						-	-																					6.40	
6.80						-	-																					6.80	
7.20						-	-																					7.20	
7.60						-	-																					7.60	
8.00						-	-																					8.00	
8.40						-	-																					8.40	
8.60						-	-																					8.60	
8.80						-	-																					8.80	
9.00						-	-																					9.00	
9.20						-	-																					9.20	
9.40						-	-																					9.40	
9.60						-	-																					9.60	
9.80						-	-																					9.80	
10.00						-	-																					10.00	
10.50						-	-																					10.50	
11.00						-	-																					11.00	
11.50						-	-																					11.50	
12.00						-	-																					12.00	
13.00						-	-																					13.00	
14.00						-	-																					14.00	
15.00						-	-																					15.00	
20.00						-	-																					20.00	
Totals:						0	0							0	0												0	0	
Nominal Transactions Value:						0.00								0.00													0.00	0.00	
Number of Trades:						0								0													0	0	

OTE (CR)

(Contract Size: 100 Securities, Exercise Style: American, Physical Delivery)

Exercise Price	Call Options														Put Options														Exercise Price
	March 2014				April 2014				Other Months		March 2014				April 2014				Other Months										
	Open price	Price max	Price min	Last price	Closing price	Volume	Open Interest	Open price	Price max	Price min	Last price	Closing price	Volume	Open Interest	Volume	Open Interest	Open price	Price max	Price min	Last price	Closing price	Volume	Open Interest	Volume	Open Interest				
3.80						-	-																			3.80			
4.00						-	-																				4.00		
4.40						-	-																				4.40		
4.80						-	-																				4.80		
5.20						-	-																				5.20		
5.60						-	-																				5.60		
6.00						-	-																				6.00		
6.40						-	-																				6.40		
6.80						-	-																				6.80		
7.20						-	-																				7.20		
7.60						-	-																				7.60		
7.80						-	-																				7.80		
8.00						-	-																				8.00		
8.20						-	-																				8.20		
8.40						-	-																				8.40		
8.60						-	-																				8.60		
8.80						-	-																				8.80		
9.00						-	-																				9.00		
9.20						-	-																				9.20		
9.40						-	-																				9.40		
9.60						-	-																				9.60		
9.80						-	-																				9.80		
10.00						-	-																				10.00		
11.00						-	-					1.69	-	20													11.00		
12.00					0.728	-	210																				12.00		
13.00					0.238	-	55																				13.00		
14.00						-	-																				14.00		
15.00						-	-																				15.00		
16.00						-	-																				16.00		
17.00						-	-																				17.00		
Totals:						0	265						0	20	0	0						0	305		0	0			
Nominal Transactions Value:						0.00						0.00			0.00							0.00			0.00		0.00		
Number of Trades:						0						0			0							0			0		0		

PIRAEUS BANK (CR)

(Contract Size: 100 Securities, Exercise Style: American, Physical Delivery)

Exercise Price	Call Options														Put Options														Exercise Price
	March 2014				April 2014				Other Months		March 2014				April 2014				Other Months										
	Open price	Price max	Price min	Last price	Closing price	Volume	Open Interest	Open price	Price max	Price min	Last price	Closing price	Volume	Open Interest	Volume	Open Interest	Open price	Price max	Price min	Last price	Closing price	Volume	Open Interest	Volume	Open Interest				
0.600						-	-																				0.600		
0.700						-	-																					0.700	
0.800						-	-																					0.800	
0.900						-	-																					0.900	
1.00						-	-																					1.00	
1.10						-	-																					1.10	
1.20						-	-																					1.20	
1.25						-	-																					1.25	
1.30						-	-																					1.30	
1.35						-	-																					1.35	
1.40						-	-																					1.40	
1.45						-	-																					1.45	
1.50						-	-																					1.50	
1.55						-	-																					1.55	
1.60						-	-																					1.60	
1.65						-	-																					1.65	
1.70						-	-																					1.70	
1.80						-	-																					1.80	
1.90						-	-																					1.90	
2.00						-	-																					2.00	
2.20						-	-																					2.20	
2.40						-	-																					2.40	
2.60						-	-																					2.60	
2.80						-	-																					2.80	
Totals:						0	0							0	0	0	0									0	0	0	0
Nominal Transactions Value:						0.00							0.00	0.00										0.00	0.00				
Number of Trades:						0							0	0										0	0				



PPC (CR)

(Contract Size: 100 Securities, Exercise Style: American, Physical Delivery)

Exercise Price	Call Options															Put Options											Exercise Price									
	March 2014					April 2014					Other Months					March 2014					April 2014					Other Months										
	Open price	Price max	Price min	Last price	Closing price	Volume	Open Interest	Open price	Price max	Price min	Last price	Closing price	Volume	Open Interest	Volume	Open Interest	Open price	Price max	Price min	Last price	Closing price	Volume	Open Interest	Open price	Price max	Price min		Last price	Closing price	Volume	Open Interest	Volume	Open Interest	Volume	Open Interest	
4.00						-	-																												4.00	
4.40					7.10	-	30																												4.40	
4.80						-	-																												4.80	
5.20						-	-																												5.20	
5.60						-	-																												5.60	
6.00						-	-																												6.00	
6.40						-	-																												6.40	
6.80						-	-																												6.80	
7.20						-	-																												7.20	
7.60						-	-																												7.60	
8.00						-	-																												8.00	
8.40						-	-																												8.40	
8.80						-	-																												8.80	
9.00						-	-																												9.00	
9.20						-	-					2.35	-	20													0.024	-	-					9.20		
9.40						-	-																												9.40	
9.60						-	-					1.98	-	10													0.054	-	-						9.60	
9.80						-	-																				0.009	-	5						9.80	
10.00						-	-					1.63	-	10													0.016	-	5						10.00	
10.50						-	-																												10.50	
11.00					0.678	-	5					0.897	-	20													0.174	-	100						11.00	
11.50						-	-																												11.50	
12.00					0.191	-	20																												12.00	
12.50						-	-																													12.50
13.00						-	-																													13.00
14.00						-	-																													14.00
15.00						-	-																													15.00
16.00						-	-																													16.00
Totals:						0	55					0	60	0	0											0	110					0	30	0	0	
Nominal Transactions Value:						0.00						0.00		0.00	0.00											0.00		0.00				0.00	0.00			
Number of Trades:						0						0		0	0											0.00		0				0	0			

Securities	Type[4]	Stock Repo [1]						Stock Reverse Repo [2]						Repurchase Agreements [3]										
		Trans. price	chg.	Trades	Volume	Transactions Value	Open Interest[5]	Price max	Price min	Last price	Last Ask	Trades	Volume	Transactions Value	Open Interest[5]	Price max	Price min	Last price	Last Ask	Trades	Volume	Transactions Value	Open Interest[5]	
AEGEAN AIRLINES (CR)	SR RA	100.00	---	---	---	---	88	---	---	---	44@3%	---	---	---	---	---	---	---	---	---	---	---	---	
ALPHA BANK (CR)	SR RA	100.03	---	---	---	---	114,954	---	---	---	---	---	---	91,963	---	---	---	---	---	---	---	---	29,570	
ALPHA ETF FTSE Athex Large Cap	SR RA	100.00	---	---	---	---	---	---	---	---	---	---	---	---	---	---	1.50%	1.50%	1.50%	---	1	350	147,735.0	2,314
ALUMIL (CR)	RA	---	---	---	---	---	---	---	---	---	---	---	---	---	---	---	---	---	---	---	---	---	---	
ATHENS MEDICAL CENTER SA (CR)	SR RA	100.00	---	---	---	---	346	---	---	---	173@3%	---	---	---	---	---	---	---	---	---	---	---	---	
ATTICA BANK S.A. (CR)	SR RA	100.00	---	1	40	840.0	3,170	---	---	---	2428@8.2%	---	---	---	---	---	---	---	---	---	---	---	---	
AUTOHELLAS SA (CR)	SR RA	100.00	---	---	---	---	16	---	---	---	6@3%	---	---	---	---	---	---	---	---	---	---	---	---	
BIOKARPET S.A.(CR)	RA	---	---	---	---	---	---	---	---	---	---	---	---	---	---	---	---	---	---	---	---	---	---	
CC HBC AG (CR)	SR RA	100.04	---	---	---	---	1,266	---	---	---	578@3%	---	---	55	---	---	---	---	---	---	---	---	28	
CENTRIC HOLDINGS (CR)	SR RA	100.00	---	---	---	---	200	---	---	---	142@5.4%	---	---	---	---	---	---	---	---	---	---	---	---	
CORINTH PIPEWORKS SA (CR)	SR RA	100.01	0.01	---	---	---	160	---	---	---	64@3%	---	---	16	---	---	---	---	---	---	---	---	---	
CRETE PLASTICS SA (CR)	SR RA	100.00	---	---	---	---	---	---	---	---	---	---	---	---	---	---	---	---	---	---	---	---	---	
DROMEAS SA (CR)	SR RA	100.00	---	---	---	---	---	---	---	---	---	---	---	---	---	---	---	---	---	---	---	---	---	
ELLAKTOR (CR)	SR RA	100.00	---	---	---	---	2,242	---	---	---	1121@3%	---	---	---	---	---	---	---	---	---	---	---	---	
ELTON SA (CR)	SR RA	100.00	---	---	---	---	50	---	---	---	35@3%	---	---	---	---	---	---	---	---	---	---	---	---	
ELVAL SA. (CB)	SR RA	100.00	---	---	---	---	368	---	---	---	184@3%	---	---	---	---	---	---	---	---	---	---	---	---	
EUROBANK ERGASIAS (CR)	SR RA	100.03	0.01	---	---	---	1,323	---	---	---	4@8.1%	---	---	1,020	---	---	---	---	---	---	---	---	56	
EUROBANK PROPERTIES REIC (CR)	SR RA	100.01	---	---	---	---	1,174	---	---	---	575@3%	---	---	12	---	---	---	---	---	---	---	---	---	
EUROPEAN RELIANCE INSUR. (CR)	SR RA	100.00	---	---	---	---	---	---	---	---	---	---	---	---	---	---	---	---	---	---	---	---	---	
EYDAP S.A. (CR)	SR RA	100.02	0.01	---	---	---	331	---	---	---	150@3%	---	---	5	---	---	---	---	---	---	---	---	9	
FOLLI FOLLIE (CR)	SR RA	100.41	0.08	---	---	---	651	---	---	---	63@3%	---	---	262	---	---	---	---	---	---	---	---	6	
FOURLIS (CR)	SR RA	100.00	---	---	---	---	109	3.00%	3.00%	3.00%	94@3%	1	7	4,130.0	7	---	---	---	---	---	---	---	---	
FRIGOGLOSS SA (CR)	SR RA	100.00	---	---	---	---	216	---	---	---	108@3%	---	---	---	---	---	---	---	---	---	---	---	---	
GEK TERNA (CR)	SR RA	100.00	---	---	---	---	630	---	---	---	313@3%	---	---	2	---	---	---	---	---	---	---	---	---	
GR. SARANTIS SA (CR)	SR RA	100.00	---	---	---	---	58	---	---	---	29@3%	---	---	---	---	---	---	---	---	---	---	---	---	
HALKOR SA (CB)	SR RA	100.00	---	1	50	3,905.0	505	---	---	---	227@3%	---	---	---	---	---	---	---	---	---	---	---	---	
HELLENIC EXCHANGES-A.S.E. (CR)	SR RA	100.01	---	---	---	---	5,933	---	---	---	2785@3%	---	---	146	---	---	---	---	---	---	---	---	---	
HELLENIC PETROLEUM (CR)	SR RA	100.10	0.02	---	---	---	2,255	---	---	---	527@3%	---	---	600	---	---	---	---	---	---	---	---	24	
HYGEIA SA (CR)	SR RA	100.00	---	---	---	---	500	---	---	---	200@3.9%	---	---	---	---	---	---	---	---	---	---	---	---	
IASO SA (CR)	SR RA	100.00	---	---	---	---	195	---	---	---	97@3%	---	---	---	---	---	---	---	---	---	---	---	---	
IKTINOS HELLAS SA (CR)	SR RA	100.00	---	---	---	---	10	---	---	---	---	---	---	---	---	---	---	---	---	---	---	---	---	
INTRACOM CONSTR. (CR)	SR RA	100.00	---	---	---	---	7	---	---	---	---	---	---	---	---	---	---	---	---	---	---	---	---	

## Stock Lending Notes

[1] - Stock Repo: A Contract for selling stocks to HELEX with a Repurchase Right (According to ATHEX BoD Resolution No 17)

[2] - Stock Reverse Repo: A Contract for buying stocks from HELEX with a Resell Right. (According to ATHEX BoD Resolution No 18)

[3] - Standardized Repurchase Agreements: A Contract that constitutes a standardized agreement for the purchase or sale of shares, with repurchase or resell pact (According to ATHEX BoD Resolution No 20)

[4] - Type of products is divided into SR: Stock Repo or Stock Reverse Repo, and RA: Repurchase Agreements.

[5] - Open Interest in all Series (both tradeable or non-tradeable).

Securities	Type[4]	Stock Repo [1]						Stock Reverse Repo [2]						Repurchase Agreements [3]									
		Trans. price	chg.	Trades	Volume	Transactions Value	Open Interest[5]	Price max	Price min	Last price	Last Ask	Trades	Volume	Transactions Value	Open Interest[5]	Price max	Price min	Last price	Last Ask	Trades	Volume	Transactions Value	Open Interest[5]
INTRACOM HOLDINGS (CR)	SR RA	100.00	---	---	---	---	665	---	---	---	332@3%	---	---	---	---	---	---	---	---	---	---	---	---
INTRALOT (CR)	SR RA	100.02	---	---	---	---	843	---	---	---	265@3%	---	---	---	85	---	---	---	---	---	---	---	38
J & P - AVAX SA (CR)	SR RA	100.00	---	---	---	---	223	---	---	---	111@3%	---	---	---	---	---	---	---	---	---	---	---	---
JUMBO SA (CR)	SR RA	100.00	---	---	---	---	2,261	---	---	---	---	---	---	---	40	---	---	---	---	---	---	---	11
KARATZIS SA (CR)	RA	---	---	---	---	---	---	---	---	---	---	---	---	---	---	---	---	---	---	---	---	---	---
KLEEMAN HELLAS SA (CR)	SR RA	100.00	---	---	---	---	982	---	---	---	491@3%	---	---	---	---	---	---	---	---	---	---	---	---
KLOUKINAS - LAPPAS SA (CR)	SR RA	100.00	---	---	---	---	---	---	---	---	---	---	---	---	---	---	---	---	---	---	---	---	---
KRI-KRI S.A. (CR)	SR RA	100.00	---	---	---	---	551	---	---	---	275@3%	---	---	---	---	---	---	---	---	---	---	---	---
LAMDA DEVELOPMENT SA (CR)	SR RA	100.00	---	---	---	---	---	---	---	---	---	---	---	---	---	---	---	---	---	---	---	---	---
LOULIS MILLS SA (CR)	SR RA	100.00	---	---	---	---	---	---	---	---	---	---	---	---	---	---	---	---	---	---	---	---	---
MARFIN INVESTMENT GROUP (CR)	SR RA	100.00	---	---	---	---	3,375	3.80%	3.80%	3.80%	1439@3.8%	3	584	29,083.2	544	3.80%	3.80%	3.80%	---	1	4	199.2	4
METKA (CR)	SR RA	100.12	0.02	---	---	---	533	---	---	---	145@3%	---	---	---	121	---	---	---	---	---	---	---	5
MLS MULTIMEDIA SA (CR)	SR RA	100.00	---	---	---	---	109	---	---	---	54@3%	---	---	---	---	---	---	---	---	---	---	---	---
MOTOR OIL (CR)	SR RA	100.05	0.01	---	---	---	1,857	---	---	---	696@3%	---	---	---	232	---	---	---	---	---	---	---	9
MYTILINEOS HOLDINGS (CR)	SR RA	100.02	---	---	---	---	3,763	3.00%	3.00%	3.00%	1643@3%	1	19	13,433.0	238	---	---	---	---	---	---	---	---
NATIONAL BANK (CR)	SR RA	100.21	0.05	---	---	---	9,610	---	---	---	---	---	---	8,183	---	---	---	---	---	---	---	---	3,076
NBGAM ETF	SR RA	100.00	---	---	---	---	---	---	---	---	---	---	---	---	---	---	---	---	---	---	---	---	100
NBGAM ETF GREECE & TURKEY 30	SR RA	100.00	---	---	---	---	---	---	---	---	---	---	---	---	---	---	---	---	---	---	---	---	36
NIREFS SA (CR)	SR RA	100.00	---	---	---	---	322	---	---	---	239@6.6%	---	---	---	---	---	---	---	---	---	---	---	---
OPAP (CR)	SR RA	100.02	0.01	---	---	---	3,839	3.00%	3.00%	3.00%	1619@3%	1	100	116,800.0	200	---	---	---	---	---	---	---	344
OTE (CR)	SR RA	100.04	---	---	---	---	5,064	---	---	---	2051@3%	---	---	---	481	---	---	---	---	---	---	---	38
P.P.A. S.A. (CR)	SR RA	100.11	0.02	---	---	---	14	---	---	---	5@3%	---	---	---	2	---	---	---	---	---	---	---	20
PAPOUTSANIS (CR)	SR RA	100.00	---	---	---	---	---	---	---	---	---	---	---	---	---	---	---	---	---	---	---	---	---
PETROPOULOS PETROS (CR)	RA	---	---	---	---	---	---	---	---	---	---	---	---	---	---	---	---	---	---	---	---	---	---
PIRAEUS BANK (CR)	SR RA	100.08	0.01	---	---	---	9,294	---	---	---	---	---	---	7,435	---	---	---	---	---	---	---	---	105
PPC (CR)	SR RA	100.14	0.03	---	---	---	1,908	3.00%	3.00%	3.00%	209@3%	1	116	133,284.0	720	---	---	---	---	---	---	---	18
QUEST HOLDINGS (CR)	SR RA	100.00	---	---	---	---	---	---	---	---	---	---	---	---	---	---	---	---	---	---	---	---	---
REVOIL (CR)	SR RA	100.00	---	---	---	---	---	---	---	---	---	---	---	---	---	---	---	---	---	---	---	---	---
SELECTED TEXT. IND. ASSOC (CR)	SR RA	100.00	---	---	---	---	110	---	---	---	81@6.6%	---	---	---	---	---	---	---	---	---	---	---	---
SIDENOR (CR)	SR RA	100.01	0.01	1	10	1,970.0	391	---	---	---	165@3%	---	---	---	25	---	---	---	---	---	---	---	---
TECHNICAL OLYMPIC SA (CR)	SR RA	100.00	---	---	---	---	44	---	---	---	22@3%	---	---	---	---	---	---	---	---	---	---	---	---
TERNA ENERGY (CR)	SR RA	100.00	---	---	---	---	176	---	---	---	88@3%	---	---	---	---	---	---	---	---	---	---	---	---

## Stock Lending Notes

[1] - Stock Repo: A Contract for selling stocks to HELEX with a Repurchase Right (According to ATHEX BoD Resolution No 17)

[2] - Stock Reverse Repo: A Contract for buying stocks from HELEX with a Resell Right. (According to ATHEX BoD Resolution No 18)

[3] - Standardized Repurchase Agreements: A Contract that constitutes a standardized agreement for the purchase or sale of shares, with repurchase or resell pact (According to ATHEX BoD Resolution No 20)

[4] - Type of products is divided into SR: Stock Repo or Stock Reverse Repo, and RA: Repurchase Agreements.

[5] - Open Interest in all Series (both tradeable or non-tradeable).

Securities	Type[4]	Stock Repo [1]						Stock Reverse Repo [2]						Repurchase Agreements [3]									
		Trans. price	chg.	Trades	Volume	Transactions Value	Open Interest[5]	Price max	Price min	Last price	Last Ask	Trades	Volume	Transactions Value	Open Interest[5]	Price max	Price min	Last price	Last Ask	Trades	Volume	Transactions Value	Open Interest[5]
THESSALONIKA WATER & SEWERAGE	SR RA	100.00	---	---	---	---	1,270	---	---	---	635@3%	---	---	---	---	---	---	---	---	---	---	---	---
THRACE PLASTICS SA (CR)	SR RA	100.00	---	---	---	---	1,010	---	---	---	505@3%	---	---	---	---	---	---	---	---	---	---	---	---
TITAN CEMENT (CR)	SR RA	100.08	0.02	---	---	---	8,972	---	---	---	3716@3%	---	---	765	---	---	---	---	---	---	---	---	7
TPA SA (CR)	SR RA	100.00	---	---	---	---	46	---	---	---	23@3%	---	---	---	---	---	---	---	---	---	---	---	---
TRASTOR REAL EST. INV. CO.(CR)	SR RA	100.00	---	---	---	---	284	---	---	---	142@3%	---	---	---	---	---	---	---	---	---	---	---	---
VIOHALCO SA/INV (CB)	SR RA	100.00	---	2	202	96,758.0	202	---	---	---	---	---	---	---	---	---	---	---	---	---	---	---	---

## Stock Lending Notes

[1] - Stock Repo: A Contract for selling stocks to HELEX with a Repurchase Right (According to ATHEX BoD Resolution No 17)

[2] - Stock Reverse Repo: A Contract for buying stocks from HELEX with a Resell Right. (According to ATHEX BoD Resolution No 18)

[3] - Standardized Repurchase Agreements: A Contract that constitutes a standardized agreement for the purchase or sale of shares, with repurchase or resell pact (According to ATHEX BoD Resolution No 20)

[4] - Type of products is divided into SR: Stock Repo or Stock Reverse Repo, and RA: Repurchase Agreements.

[5] - Open Interest in all Series (both tradeable or non-tradeable).

## Sectors codification for listed companies

533	-	Exploration & Production	537	-	Integrated Oil & Gas
1353	-	Commodity Chemicals	1357	-	Specialty Chemicals
1753	-	Aluminum	1755	-	Nonferrous Metals
1757	-	Steel	1775	-	General Mining
2353	-	Building Materials & Fixtures	2357	-	Heavy Construction
2723	-	Containers & Packaging	2727	-	Diversified Industrials
2733	-	Electrical Components & Equipment	2753	-	Commercial Vehicles & Trucks
2757	-	Industrial Machinery	2773	-	Marine Transportation
2777	-	Transportation Services	2791	-	Business Support Services
2797	-	Industrial Suppliers	3535	-	Distillers & Vintners
3537	-	Soft Drinks	3573	-	Farming Fishing & Plantations
3577	-	Food Products	3722	-	Durable Household Products
3726	-	Furnishings	3728	-	Home Construction
3747	-	Toys	3763	-	Clothing & Accessories
3765	-	Footwear	3767	-	Personal Products
3785	-	Tobacco	4533	-	Health Care Providers
4535	-	Medical Equipment	4577	-	Pharmaceuticals
5337	-	Food Retailers & Wholesalers	5371	-	Apparel Retailers
5373	-	Broadline Retailers	5375	-	Home Improvement Retailers
5379	-	Specialty Retailers	5553	-	Broadcasting & Entertainment
5555	-	Media Agencies	5557	-	Publishing
5751	-	Airlines	5752	-	Gambling
5753	-	Hotels	5755	-	Recreational Services
5757	-	Restaurants & Bars	5759	-	Travel & Tourism
6535	-	Fixed Line Telecommunications	6575	-	Mobile Telecommunications
7535	-	Conventional Electricity	7537	-	Alternative Electricity
7577	-	Water	8355	-	Banks
8534	-	Insurance Brokers	8536	-	Property & Casualty Insurance
8633	-	Real Estate Holding & Development	8637	-	Real Estate Services
8671	-	Industrial & Office REITs	8675	-	Specialty REITs
8775	-	Specialty Finance	8777	-	Investment Services
8985	-	Equity Investment Instruments	9533	-	Computer Services
9535	-	Internet	9537	-	Software
9572	-	Computer Hardware	9574	-	Electronic Office Equipment
9578	-	Telecommunications Equipment	11000	-	ETF

